

Career Technical Education CTE

Amy Franklin and Sally Burnett - Business

Tonya Mallinson - Family and Consumer Science (FCS)

Maura Butler and Jane Haun - Agriculture

Family and Consumer Science (FCS)

Career and Family Leadership (Exploratory FACS) - 43

Foods I - 26

*Fashion History and Design - 0

Foods II - 20

*Housing and Interior Design - 0

Creative Foods - 6

Child Development I and II - 15

Classroom Highlights



Food Labs
and
Food Art



Holden FCCLA: The Ultimate Leadership Experience

- Freshmen Orientation
- Region 12 Fall Leadership Meeting
- Pumpkins in the Park
- 7th Annual Thanksgiving Food Basket Drive
- Christmas in the Park
- STAR Event Judgings
- Valentine games at Holden Manor
- Current Membership Count:
10 affiliated members



Business Education

- Leadership - 11
- Personal Finance - 69
- Computer Application - 98
- Entrepreneurship -
- Graphic Arts - 6
- Computer Programming -
- SBE - 12
- Intro to Business - 17
- Business Technology - 13
- Desktop Publishing -

Leadership Class Highlights

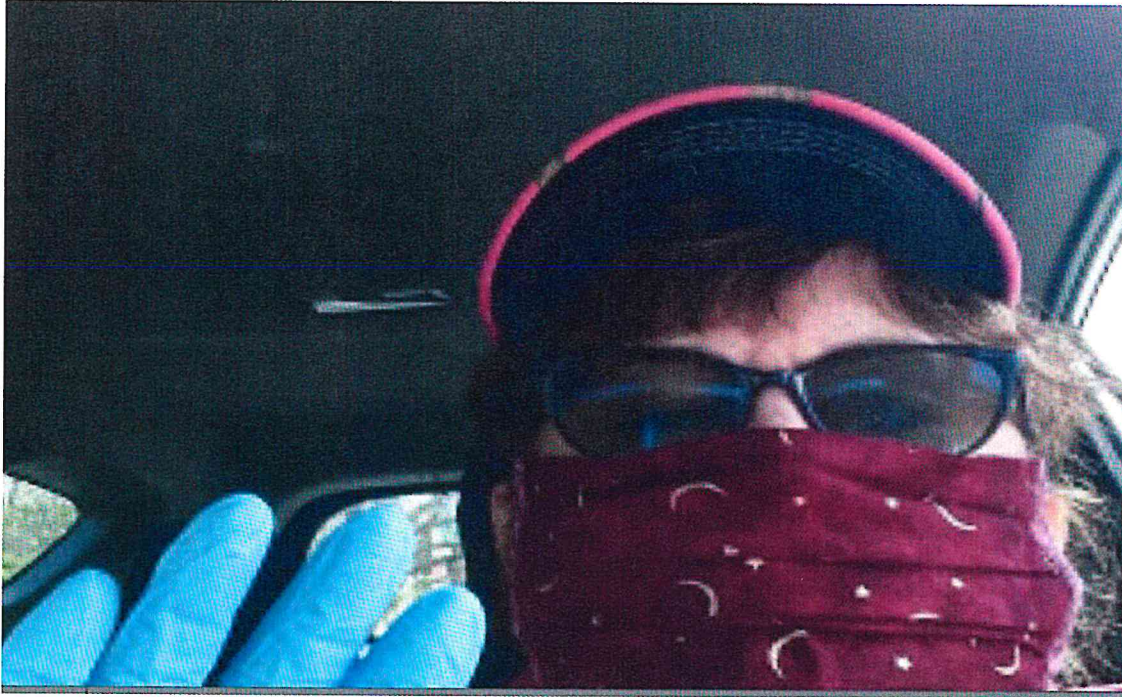
- Project management
- Human Resource management
- Civic Responsibility
- Business Communication
- Camille Gudde, Matt Barker recognized at state level as Distinguished Student Leaders

Leadership Class Highlights



SOMO Odessa
Play Unified
Recycling
Life Skills Class
Activity
Board Presentation
Chamber of
Commerce Mtg
Veteran's Day
Celebration
Pep Assembly
Blood Drives
Polar Bear Plunge

Leadership Class - Thanks for the Memories!



Thank you for supporting one of the most challenging and rewarding experiences of my life.

With much gratitude and affection...

Mrs. Burnett

Future Business Leaders of America (FBLA) Highlights

- Active Membership - 30 students
- District 10 President (Over 15 Chapters in our district)
- State Officer - President- Matt Barker
- Ambassador Professional Division - Mrs. Burnett
- KC Field Trip - Million Cups and Richardson Communications Group
- Attended National Fall Leadership Conference in Denver, CO - 20 attendees
- State Leadership Conference Qualifiers - 8
- Legislative Day Jefferson City

FBLA District Competition

Competitive Events Results:

- Brittany Morrow - 1st Computer Problem Solving, 2nd Cyber Security, 1st Journalism
- Maddie Sechrest - 1st Introduction to FBLA
- Alex VanHooser - 2nd Introduction to Business Procedures
- Matt Barker - 1st Future Business Leader, 1st Publication Design
- Peyton Daniel - 1st Publication Design, 1st Hospitality Management
- Lilly Spring - 1st Hospitality Management
- Levi Rockhold - 1st Hospitality Management
- Elaina Young - 2nd Spreadsheet Application



FBLA National Fall Leadership Conference



National Fall Leadership Conference,
Denver, Colorado.
The students toured local businesses:
Hammond's Candy and Empower Field at
Mile High



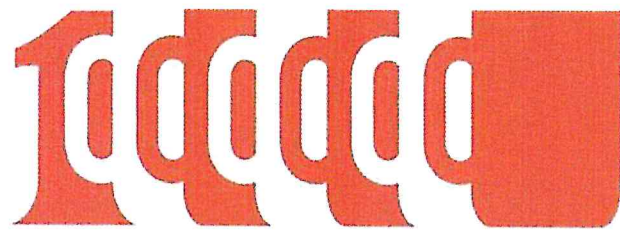
FBLA KC Field Trip

Million Cups

Plex Pod

Town Topic

Richardson Communications

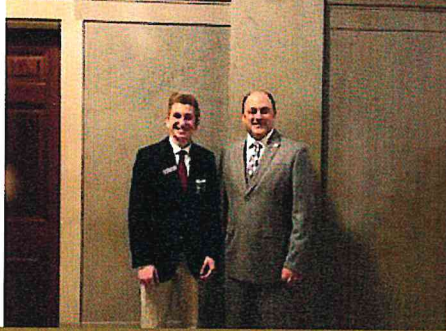


1 MILLION CUPS

CAFFEINATED BY KAUFFMAN LABS



FBLA State President Appearances



CTE Bus Ed Teachers - Highlights

NBEA

MBEA

WCBEA

FBLA

MoACTE

ACTE

UCM CTE Advisory Board





Agricultural Education

Instructors:

Maura Butler

Jane Haun

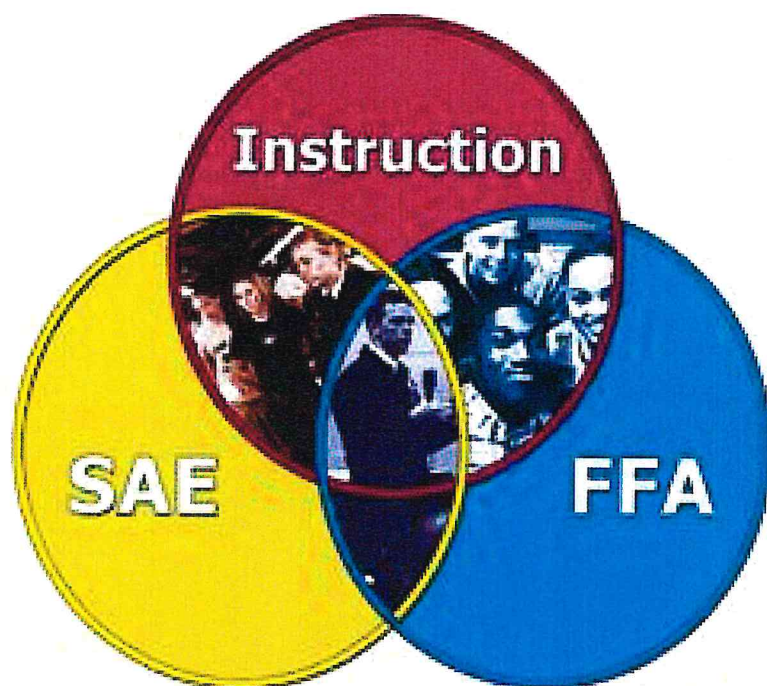


Facilities

- Agriculture Building
 - Built in 1980
- Greenhouse
 - Constructed in 2000
 - 30 x 50 Even Span
 - Power washed greenhouse
 - Cleaned cool cells
 - New heater unit
- Shop
 - New lighting



Program Overview



Instruction

➤ Ms. Butler

- 1st year teaching
- Working on Masters at Missouri State University
- *Courses Taught*
 - Agriculture Construction
 - Introduction to Mechanics
 - Welding
 - Agriculture Science I
 - Greenhouse

Instruction

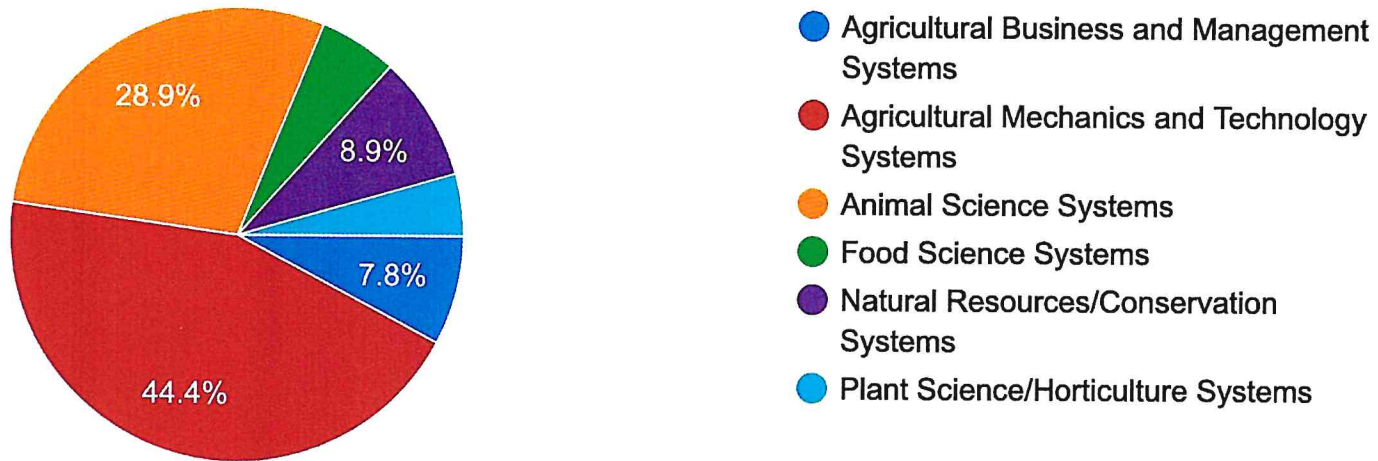
➤ Mrs. Haun

- 1st year teaching
 - Bachelor Degree from University of Central Missouri
 - *Courses Taught*
 - Agriculture I
 - Wood Working
 - Natural Resources and Conservation
 - Greenhouse II
 - Exploratory Agriculture
- 6th, 7th, 8th

Enrollment

I am most interested in the following area:

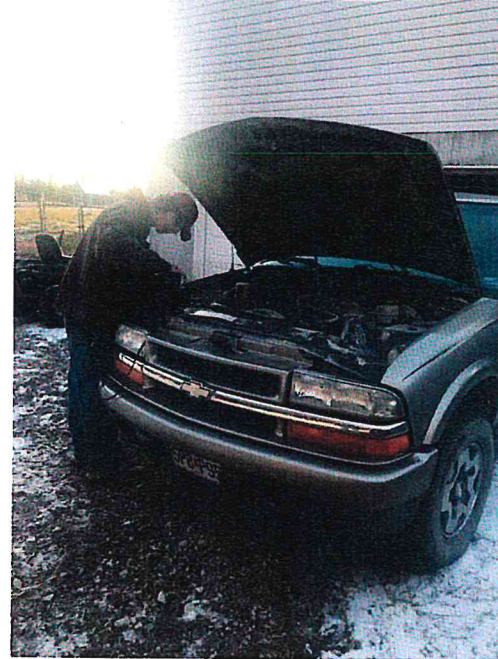
90 responses



SAE

- SAE provides a link for students to apply what they learn in the classroom to real world settings
- 62% of Ag Ed students are employed compared to the US young adult average of 37%.

- Taken from www.ffa.org



FFA

- History
 - Chartered 1939
 - 28 members
- 1987
 - 42 members
- Currently
 - 75 members



Degrees

- American FFA Degree
 - 91 students
- State FFA Degree
 - 134 students
- Chapter FFA Degree
 - Varies annually
- Greenhand FFA Degree
 - Varies annually - 35 this year



Career Development Events

Meats / Entomology / Horse Judging

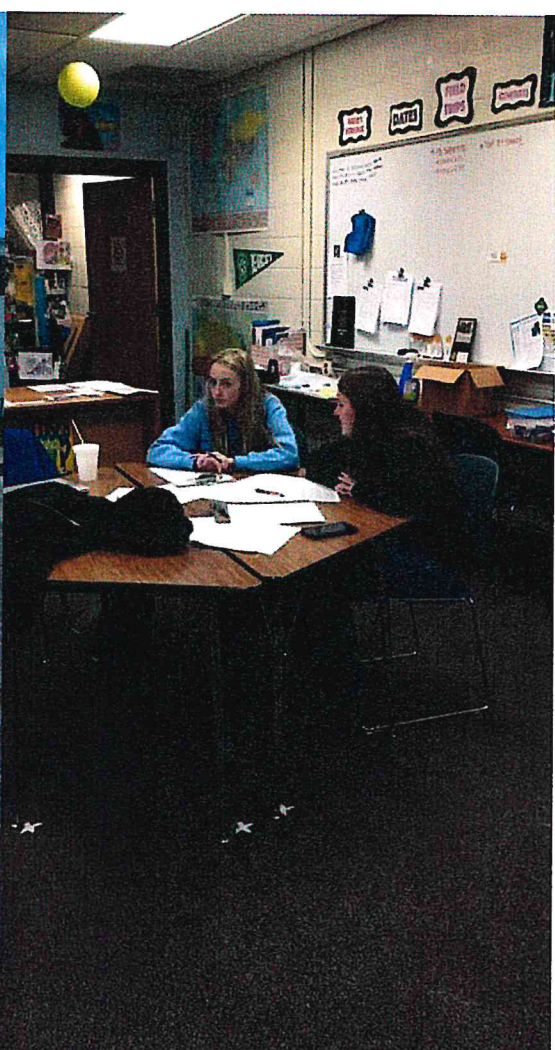
Horse Judging: Remy Evans, Lindsey Smith, **1st or 2nd at every contest we competed at.** 100 competitors on average

Meats: Chase Vogler, Frank Todaro, Emily Foley, Kaitlyn Guthridge, Caleb Stark

Entomology: Ashlee Collins, Dakota Gillette

Creed Speaking: Connor McQueary, **tied for 3rd at Marshall**

FFA Knowledge: Garrett Smith, Bryce Faust, Kasey Johnson-Atkins



Leadership

- Washington Leadership Conference
 - 5 Students participating this year (Dakota Gillette, Remy Evans, Jesse Flaspohler, Sajhara Tarres)
- National Convention
- State Convention
- State FFA Leadership Camp
 - State Leadership Medals
 - Jesse Flaspohler
- Area Officer Institute
 - Airyn Guinn
- Chapter officer training
- Community Service
- Trap Shooting

Activities



FFA Week

Activities

Community Breakfast

Tour Day: Haun Farms,
Ag-Power, Kingsville Livestock
Auction

FFA Sunday



Trap Team



- 23+ Students
- Grants
- **2nd at Districts**

