



# Holden School District Early Childhood



# Parents As Teachers



- Recently moved from 2 part time teachers to one full time teacher
- Uses Foundational and Born to Learn Curriculum
- Serves families prenatal to age 5
- Served 28 families in the 2021-2022 school year
- Partners with Holden PreK programs to offer monthly activity nights

# PreSchool Programs



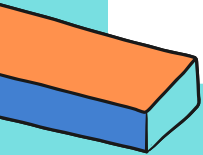
Eagles  
Nest



HEAD  
START



Early Childhood  
Special  
Education





# Eagles Nest

- 30 students enrolled
- All students are welcome, there is no screening process
- Families who qualify receive FREE preschool
- Curriculum
  - Tang Math
  - Pathways (Phonics)
  - Heggerty (Phonemic Awareness)
  - Kindergarten Readiness Goals
- Eagles Nest students participate in parent teacher conferences, receive report cards, progress reports, daily communication logs via Class Dojo, and in person meetings as needed

# Enrollment

Morning 11

Afternoon 6



## Funding

... This program is federally funded ...

## Selection Process

Students are screened for developmental delays from our SPED department using the Early Screening Profile or transferred from First Steps. All students in this class are on IEPs

## Curriculum

Individualized Education Plan  
Goals

Missouri Learning Standards  
Kindergarten Readiness  
Standards



## Early Childhood Special Education



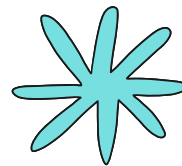
**All Children Can Learn!**

## Reporting Progress

ECES participates in parent teacher conferences, receives 4 grade cards/progress reports, receives daily communication via Class Dojo, and participate in in-person meetings as needed



# Head Start



## Enrollment

Ended the year with 4  
But currently  
projecting 10 for next  
year

## Funding

This program is  
federally funding.  
Families do not pay.

## Selection

A family inventory is  
conducted

## Curriculum

Head Start  
Curriculum, Student  
led

## Screening

Dial, DECA,  
Observation, DAYC2,  
PLS5

## Reporting Progress

Monthly home visits to report  
on standards



# Screening Data

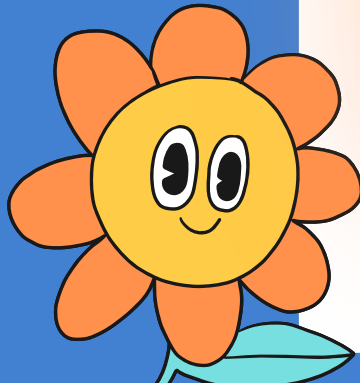
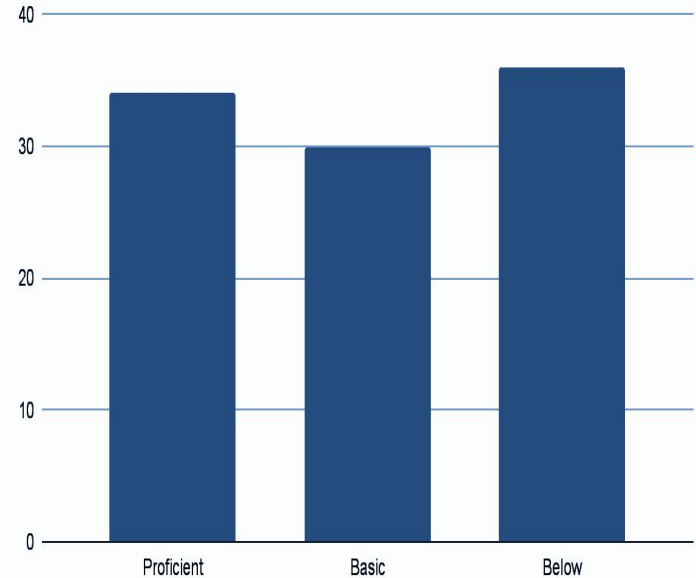
74 students screened

Proficient - 34%

Basic- 30%

Below- 36%

Percentage







# New Kindergarten Reporting Requirements

