



# STUDENTS

## COMMUNITY

### BOARD OF TRUSTEES

Board of Trustees  
Attorney

### SUPERINTENDENT

Richard O'Malley, Ed. D.

SUPERINTENDENT SECRETARY

Kim Hoffman

ASSISTANT  
SUPERINTENDENT  
PRE K - 5TH

Michelle Wynn

ASSISTANT  
SUPERINTENDENT  
6TH - 12TH

Gregory Hall

ASSISTANT  
SUPERINTENDENT OF  
EXCEPTIONAL CHILDREN

Brian Denny

CHIEF  
FINANCIAL OFFICER

Laura Showe

CHIEF  
PERSONNEL OFFICER

Nathaniel Marshall

DEPUTY  
SUPERINTENDENT

Kyle Jones

CHIEF  
ACCOUNTABILITY  
OFFICER

TBD

DIRECTOR OF  
ADULT EDUCATION

Lisa Justice, Ed. D.

DIRECTOR OF  
MAINTENANCE

Larry Reynolds

DIRECTOR OF  
TRANSPORTATION

Mitchell Washington

CULINARY  
SERVICES

Chartwells

**ASSISTANT  
SUPERINTENDENT**

PRE K - 5TH

Michelle Wynn

**ASSISTANT  
SUPERINTENDENT**

6TH - 12TH

Gregory Hall

**PRINCIPALS**

*Elementary*

**BRIGGS** - Tara Newton  
**BROCKINGTON** - Wanda Williams-Parrott  
**CARVER** - Josie Little  
**DELMAE** - Roy Ann Jolley  
**DEWEY CARTER** - Wendy Frazier  
**GREENWOOD** - Tina Johnson  
**LESTER** - Debbie Cribb  
**LUCY T. DAVIS** - Sonya Graves  
**TIMROD** - Elizabeth Jackson  
**McLAURIN** - Debbie Cribb  
**NORTH VISTA** - Sharon Dixon  
**ROYALL** - Julie Smith  
**SAVANNAH GROVE** - LaTonya Yates-Ford  
**WALLACE GREGG** - Alyssa Leibman

SCHOOL READINESS ADMIN

Catherine Sanderson

RN BECK - TBD

WOODS RD - Tifani Merritt

EXTENDED DAY

Beverly Woods

**STUDENT RECORDS/  
BOOKKEEPING**

Kathy Lee

**EXECUTIVE DIRECTOR OF  
PROFESSIONAL  
DEVELOPMENT**

Calandra Davis

**DIRECTOR OF ARTS AND  
INNOVATIVE PROGRAMS**

Erick Figueras

**DIRECTOR  
OF STEM**

Chris Rogers

**STEM  
ASSISTANT**

Beth McFadyen

**LEAD**

**ENGLISH LANGUAGE** - TBD  
**FARM TO SCHOOLS** - Jeff Murrie  
**HEALTH/PE** - Michelle Hayes  
**MATHEMATICS** - Taylor Christopher  
**SCIENCE** - Jamie Church  
**SOCIAL STUDIES** - Aubry Amerson  
**WORLD LANGUAGE** - Dawn George

**PRINCIPALS**

*Middle & High*

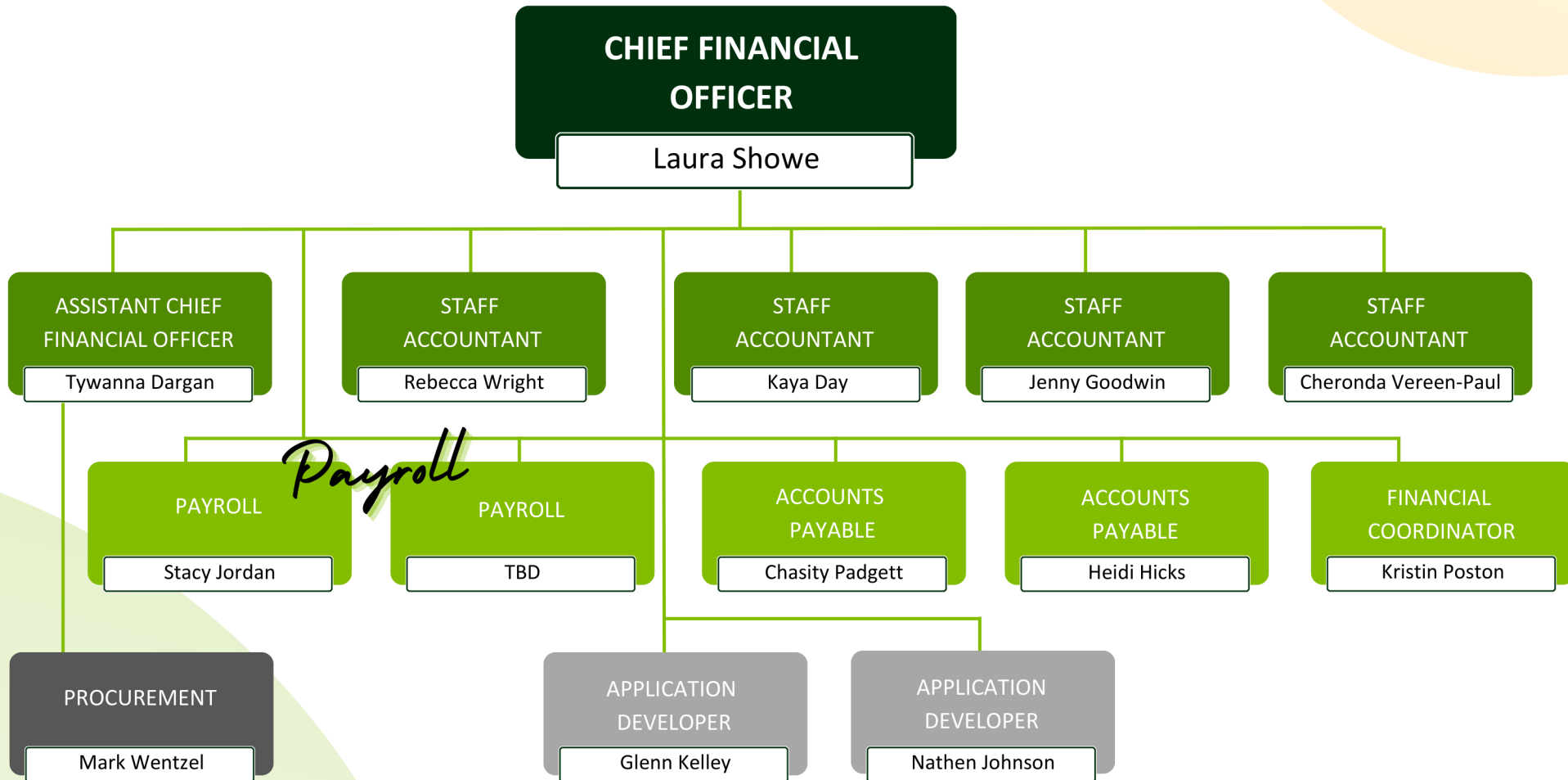
**AE RUSH** - Darryl Woodberry  
**CAREER CENTER** - Sarah Carpenter  
**MOORE** - April Leroy  
**SNEED** - Jeffery Gaines  
**SOUTH FLORENCE** - Shand Josey  
**SOUTHSIDE** - Beverly Greene  
**WEST FLORENCE** - Matthew Dowdell  
**WILLIAMS** - Carrie Ann Brigman  
**WILSON** - Eric Robinson

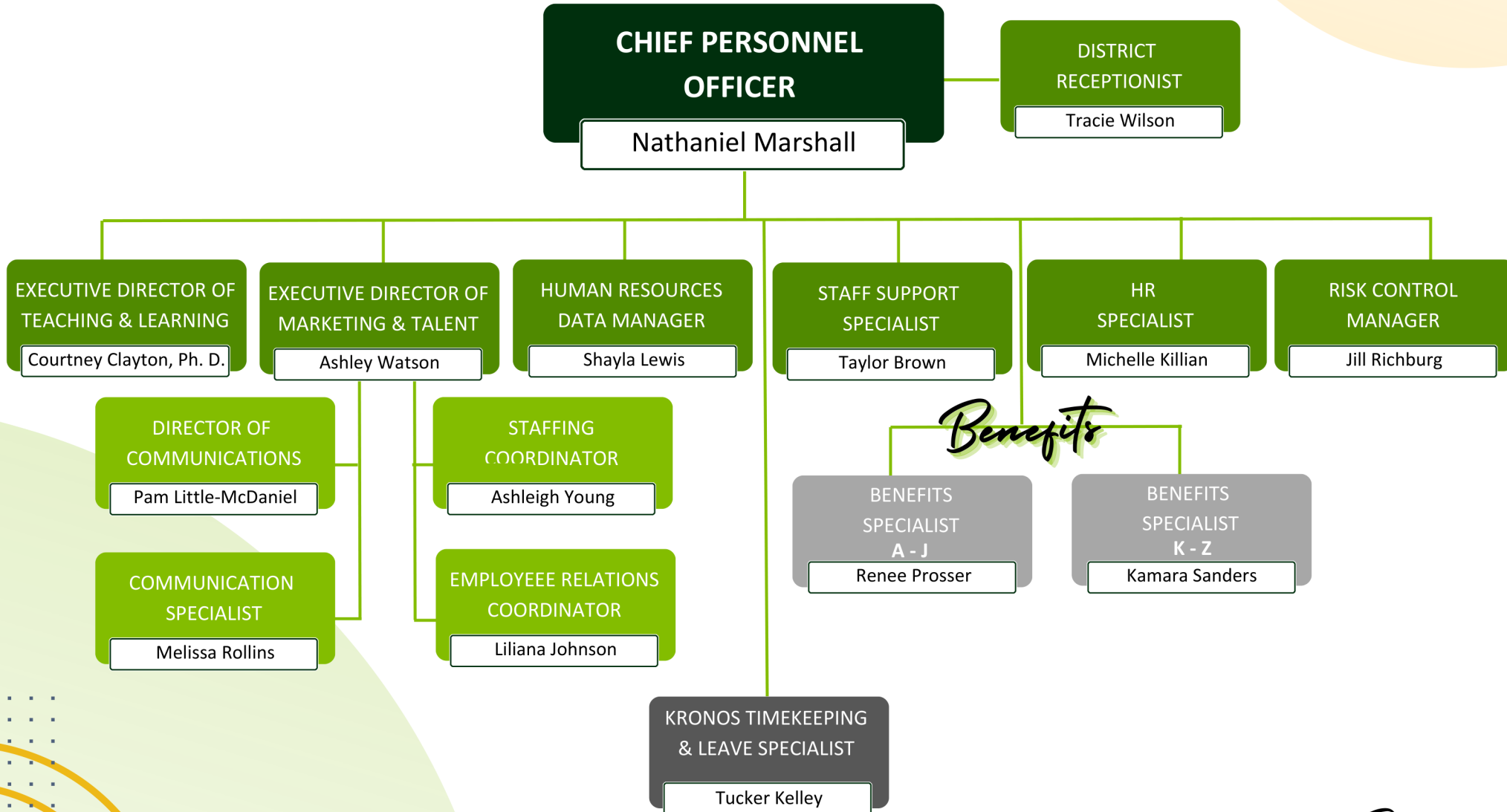
**DIRECTOR OF STUDENT  
SUPPORT SERVICES**

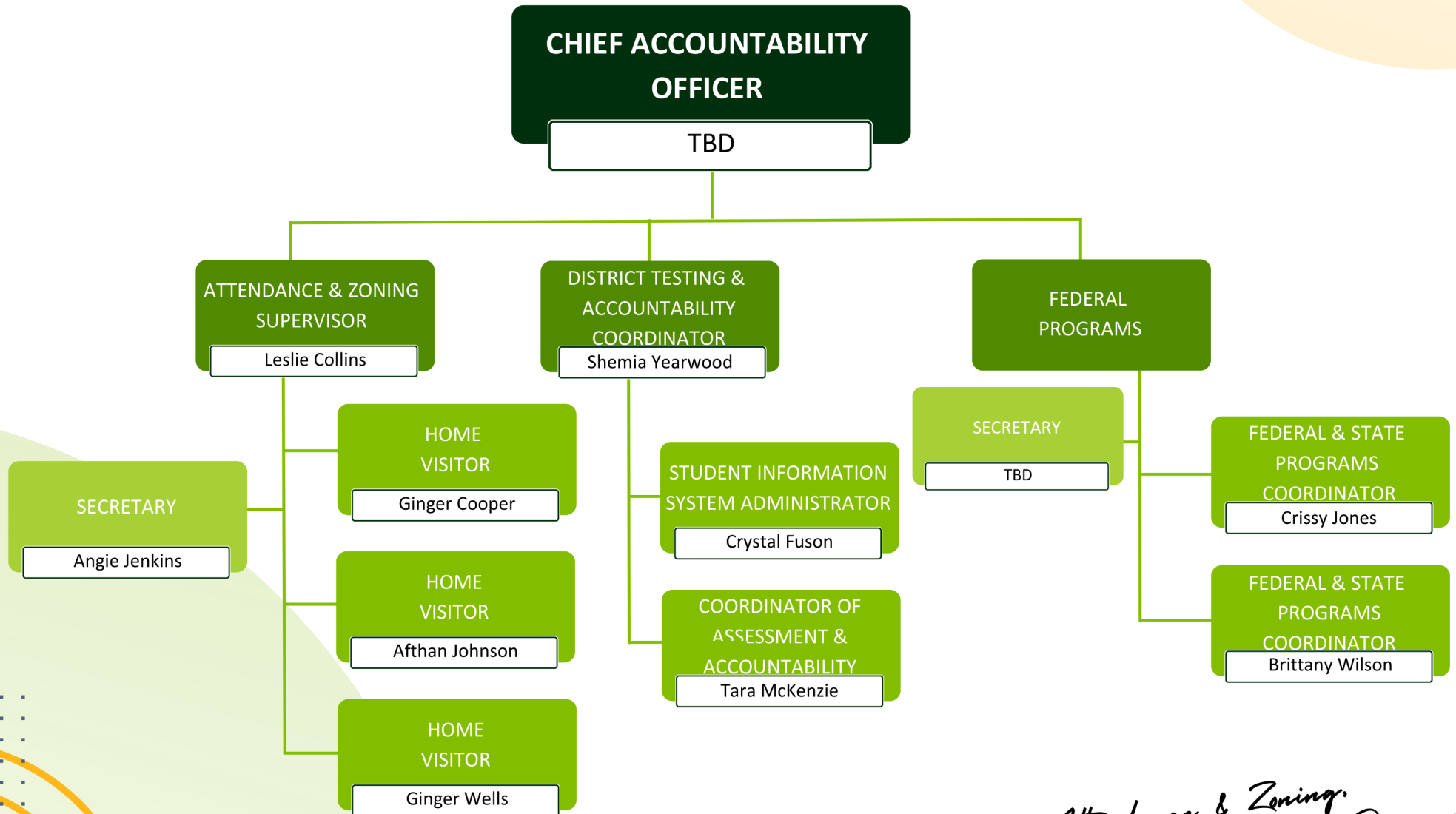
Maggie Gause

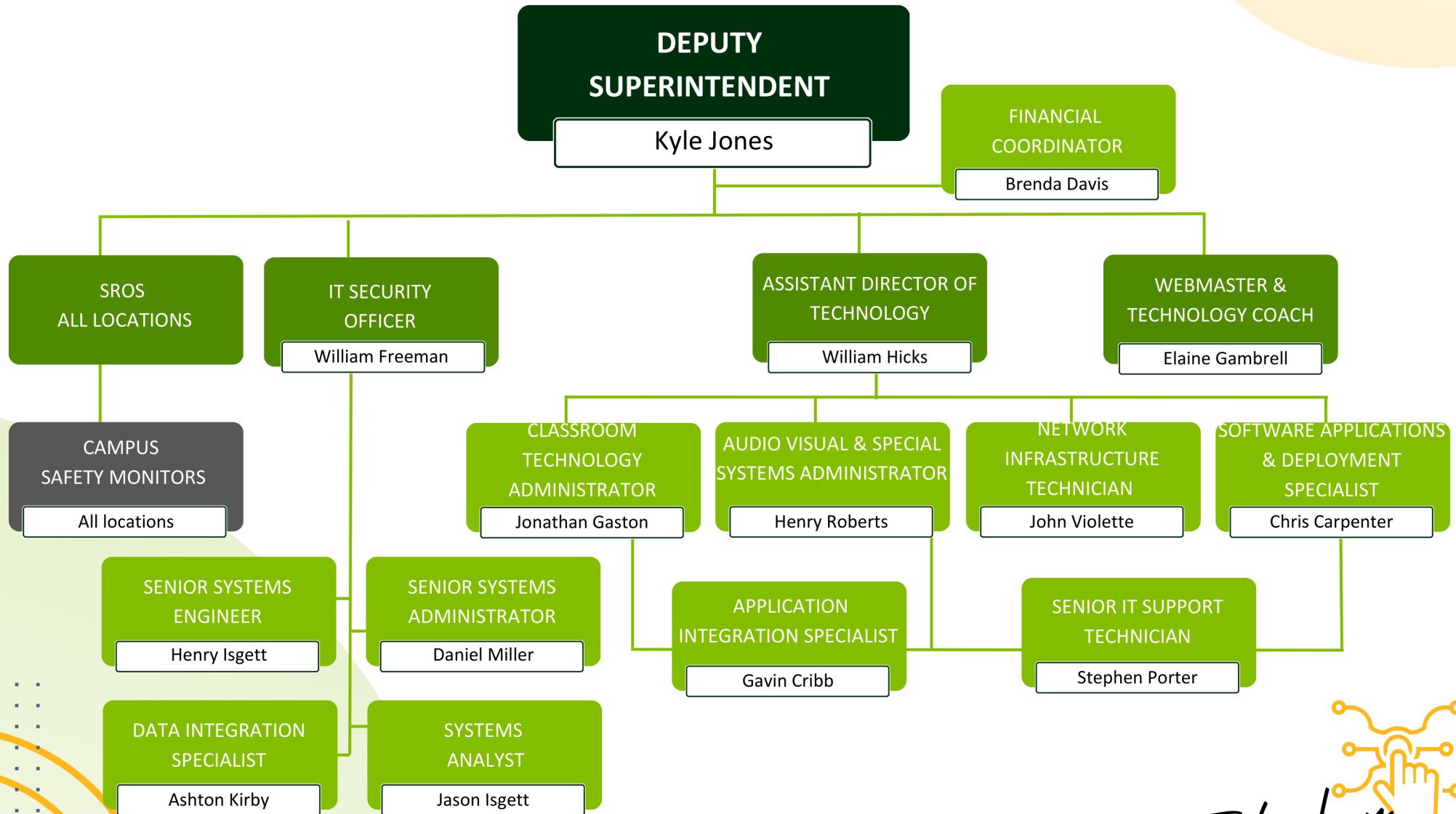
**ATHLETIC  
DIRECTORS**

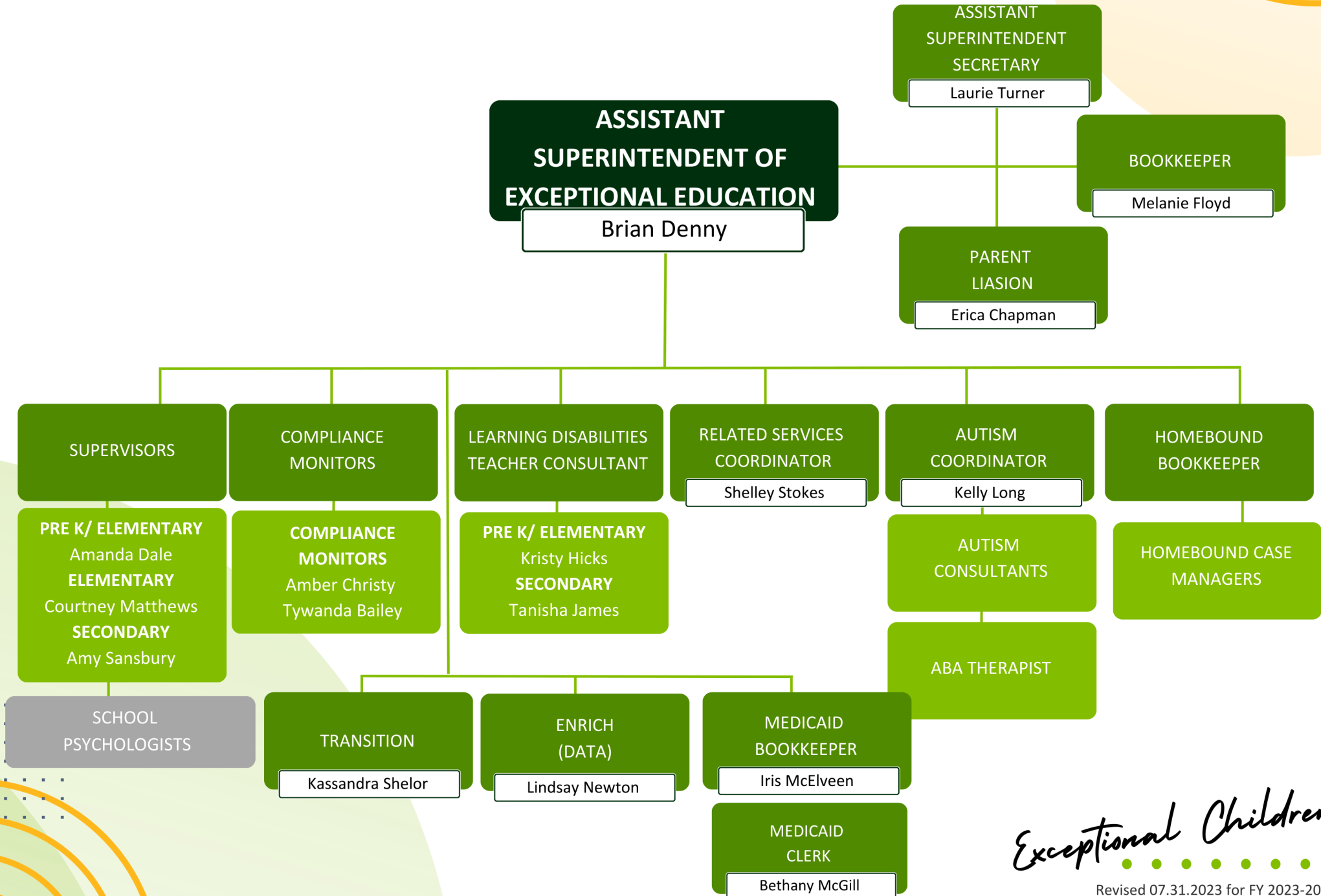
*Instruction*





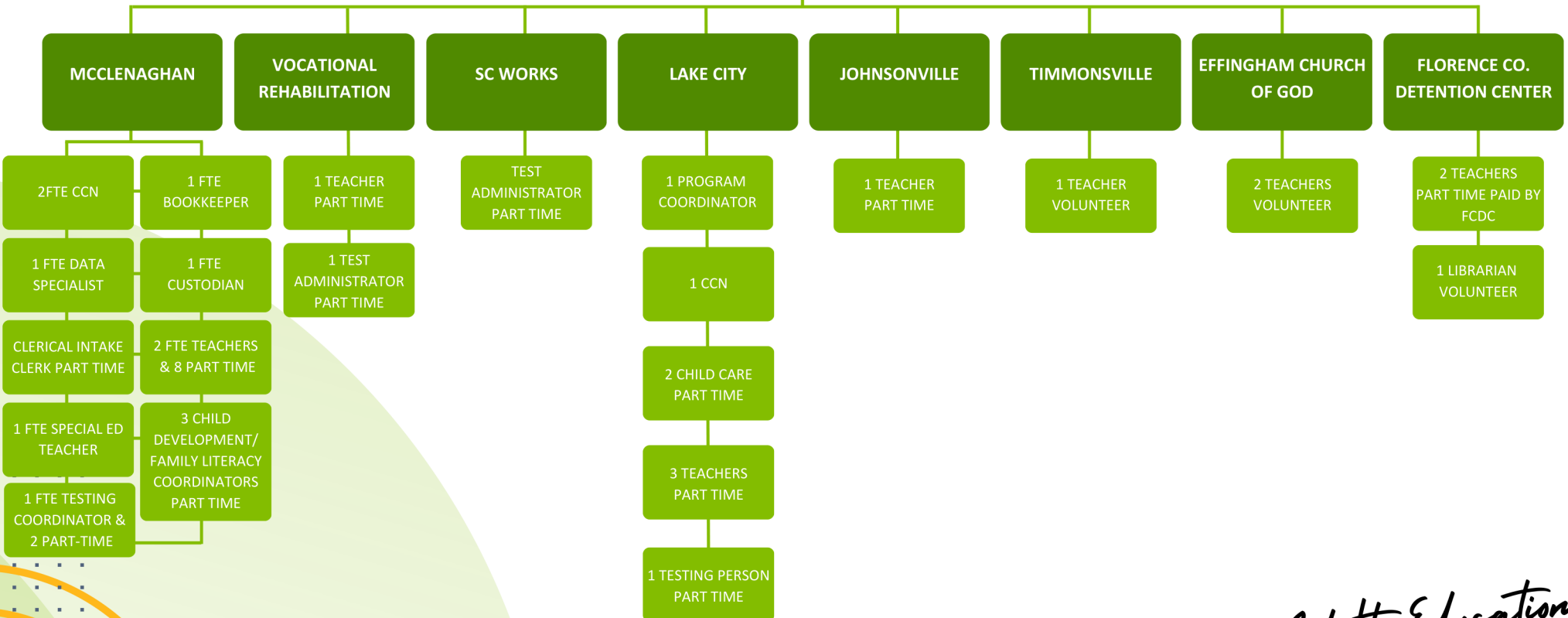




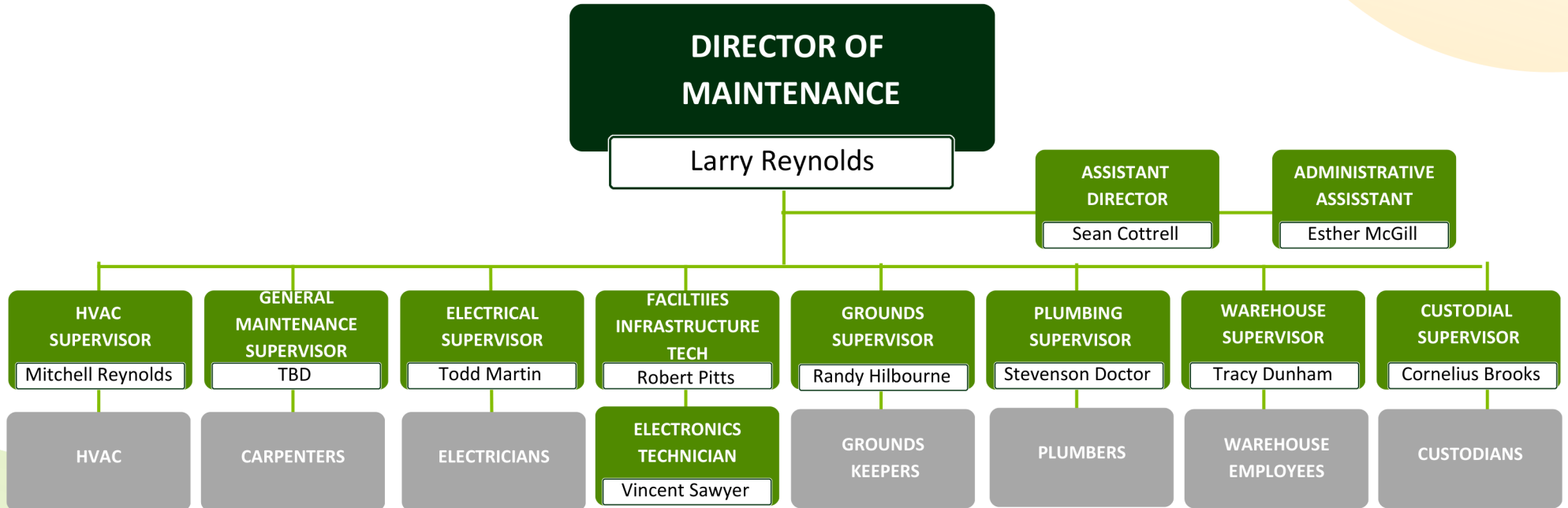


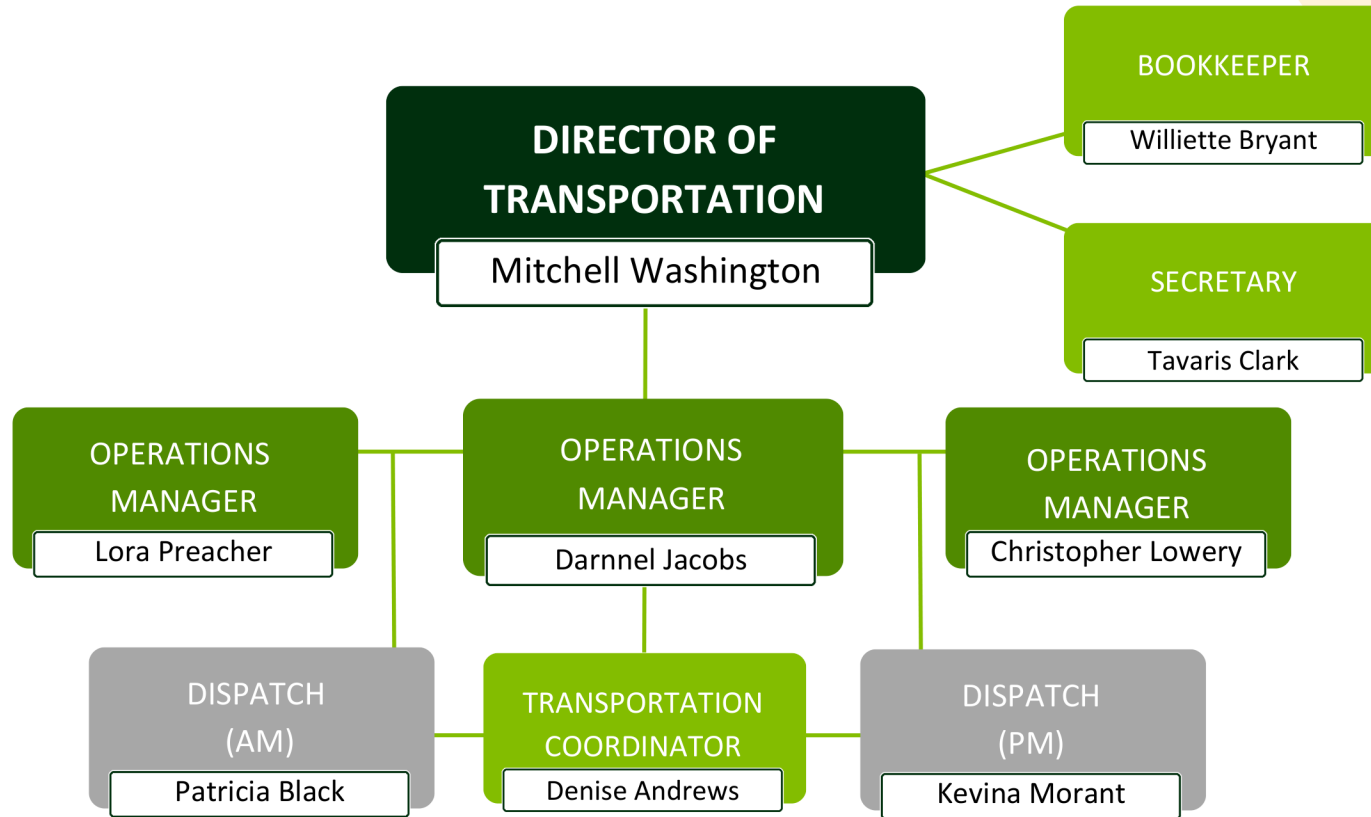
## ADULT EDUCATION DIRECTOR

Lisa Justice, Ed. D.

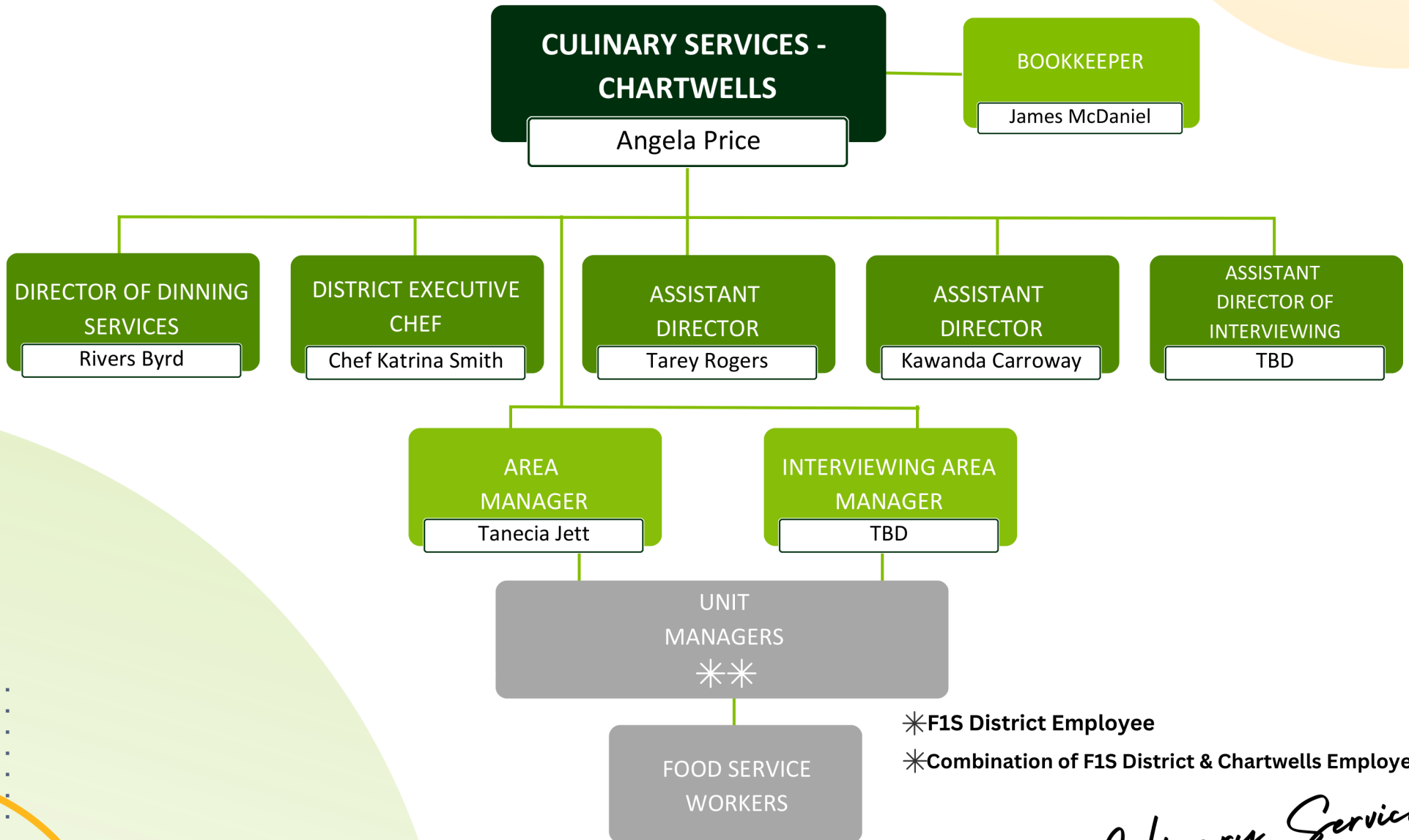








## BUS DRIVERS



\*F1S District Employee

\*Combination of F1S District & Chartwells Employees

*Culinary Services*

Revised 07.31.2023 for FY 2023-2024