

FORT THOMAS
INDEPENDENT SCHOOLS

Certified Employee Handbook

Rich in **Tradition** on the **Future**
Focused

FORT THOMAS INDEPENDENT SCHOOLS

2023-2024 Certified Employee Handbook

Brian Robinson, Superintendent

Fort Thomas Independent Board of Education
28 North Fort Thomas Avenue
Fort Thomas, KY 41075

Phone (859) 781-3333 • FAX (859) 442-4015

WEB SITE: www.fortthomas.kyschools.us

As required by law, the Board of Education does not discriminate on the basis of race, color, national or ethnic origin, age, religion, sex (including sexual orientation or gender identity), genetic information, disability, or limitations related to pregnancy, childbirth, or related medical conditions in its programs and activities and provides equal access to its facilities to the Boy Scouts and other designated youth groups.

Table of Contents

Table of Contents	i
Introduction	4
WELCOME	4
DISTRICT MISSION	5
FUTURE POLICY CHANGES	5
CENTRAL OFFICE ORGANIZATIONAL CHART	6
SCHOOL YEAR CALENDAR	7
General Terms of Employment	8
EQUAL OPPORTUNITY EMPLOYMENT	8
HARASSMENT/DISCRIMINATION/TITLE IX SEXUAL HARASSMENT	8
HIRING	10
CRIMINAL BACKGROUND CHECK AND TESTING	10
MEDICAL EXAMINATIONS	10
PERSONNEL RECORDS	10
RETENTION OF RECORDINGS	11
CERTIFICATION	11
TRANSFER OF TENURE	11
JOB RESPONSIBILITIES	11
CONFIDENTIALITY	11
INFORMATION SECURITY BREACH	12
COURSE OF STUDY/SYLLABUS REQUIREMENT	12
TEACHER-PARENT COMMUNICATIONS	13
GRADING	13
SUPERVISION RESPONSIBILITIES	14
BULLYING/HAZING	14
SCHOOL-RELATED STUDENT TRIPS	15
HOURS OF DUTY	16
PLANNING	16
SALARIES AND PAYROLL DISTRIBUTION	16
REDUCTION IN SALARY AND RESPONSIBILITIES	17
PURCHASING	17
Benefits and Leaves	19
INSURANCE	19
SALARY DEDUCTIONS	19
CAFETERIA PLAN	20

EXPENSE REIMBURSEMENT	20
HOLIDAYS	21
VACATIONS	21
LEAVE POLICIES	21
PERSONAL LEAVE	22
SICK LEAVE	22
SICK LEAVE DONATION PROGRAM	23
SICK LEAVE BANK	23
FAMILY AND MEDICAL LEAVE	23
FML BASIC LEAVE ENTITLEMENT	25
QUARANTINE LEAVE	26
MATERNITY/PARENTAL LEAVE	26
EXTENDED DISABILITY LEAVE	26
EDUCATIONAL LEAVE	27
EMERGENCY LEAVE	27
JURY LEAVE	27
MILITARY/DISASTER SERVICES LEAVE	27
UNPAID LEAVE	28
Personnel Management	29
TRANSFER	29
EMPLOYEE DISCIPLINE	29
EMPLOYEE SEPARATION	29
RESIGNATION/TERMINATION OF CONTRACT BY EMPLOYEE	30
RETIREMENT	30
EVALUATIONS	30
PROFESSIONAL DEVELOPMENT	30
DISTRICT TRAINING	31
EDUCATIONAL STUDY SEMINARS	31
Employee Conduct	32
ABSENTEEISM/TARDINESS/SUBSTITUTES	32
STAFF MEETINGS	32
FUND-RAISING ACTIVITIES	32
DISRUPTING THE EDUCATIONAL PROCESS	32
CONTROVERSIAL ISSUES	33
POLITICAL ACTIVITIES	33
EMPLOYEE RELIGIOUS EXPRESSION	34
DRUG-FREE/ALCOHOL-FREE SCHOOLS	34
FEDERAL MOTOR CARRIER SAFETY ADMINISTRATION (FMCSA)	
DRUG AND ALCOHOL CLEARINGHOUSE FOR CDL/CLP	
OPERATORS	35
WEAPONS	35

TOBACCO, ALTERNATIVE NICOTINE PRODUCT, OR VAPOR PRODUCT	35
USE OF SCHOOL FACILITIES	36
USE OF SCHOOL PROPERTY	36
USE OF SCHOOL VEHICLES	36
RESPONSIBLE USE OF TECHNOLOGY	37
USE OF PERSONAL CELL PHONES/TELECOMMUNICATION DEVICES	44
MATERIALS USED WITH STUDENTS	44
COPYRIGHTED MATERIALS	45
FILM/VIDEOS	45
HEALTH, SAFETY AND SECURITY	45
AUTOMATED EXTERNAL DEFIBRILLATORS (AEDS)	46
ASSAULTS AND THREATS OF VIOLENCE	46
SEARCH AND SEIZURE	46
CHILD ABUSE	47
CORPORAL PUNISHMENT	47
USE OF PHYSICAL RESTRAINT AND SECLUSION	47
CIVILITY	48
COMPLAINTS/COMMUNICATIONS	48
GIFTS	48
SOLICITATIONS	48
ADVERTISING IN THE SCHOOLS	49
OUTSIDE EMPLOYMENT OR ACTIVITIES	49
REQUIRED REPORTS	49
CODE OF ETHICS FOR TEACHERS	52
DRESS AND APPEARANCE MEMO FROM SUPERINTENDENT	54

Introduction

Welcome

Welcome to Fort Thomas Schools.

The purpose of the handbook is to acquaint you with general policies and procedures of the Fort Thomas Independent Schools that govern and affect your employment and to outline the benefits available to you as a certified employee of the District.

Because this handbook is a general source of information, it is not intended to be, and should not be interpreted as, a contract. It is **not** an all-encompassing document and may not cover every possible situation or unusual circumstance. If a conflict exists between information in this handbook and Board policy or administrative procedures, the policies and procedures govern.

Some policies refer to specific forms that are available in the Fort Thomas Administrative Procedures Manual. It is the employee's responsibility to refer to the actual policies and/or administrative procedures for further information. Complete copies of those documents are available at the Central Office, in the Principal's office and on the District's web site. Policies and procedures also are available on line via the District's web site or through this Internet address: <http://policy.ksba.or/f05/>. Any employee is free to review official policies and procedures and is expected to be familiar with those related to his/her job responsibilities. Employees and students who fail to comply with Board policies may be subject to disciplinary action. **01.5**

School council policies, which are also available from the Principal, may also apply in some instances. **02.4241**

In this handbook, **bolded policy codes** indicate related Board of Education policies. If an employee has questions, s/he should contact his/her immediate supervisor or any Central Office administrator.

District Mission

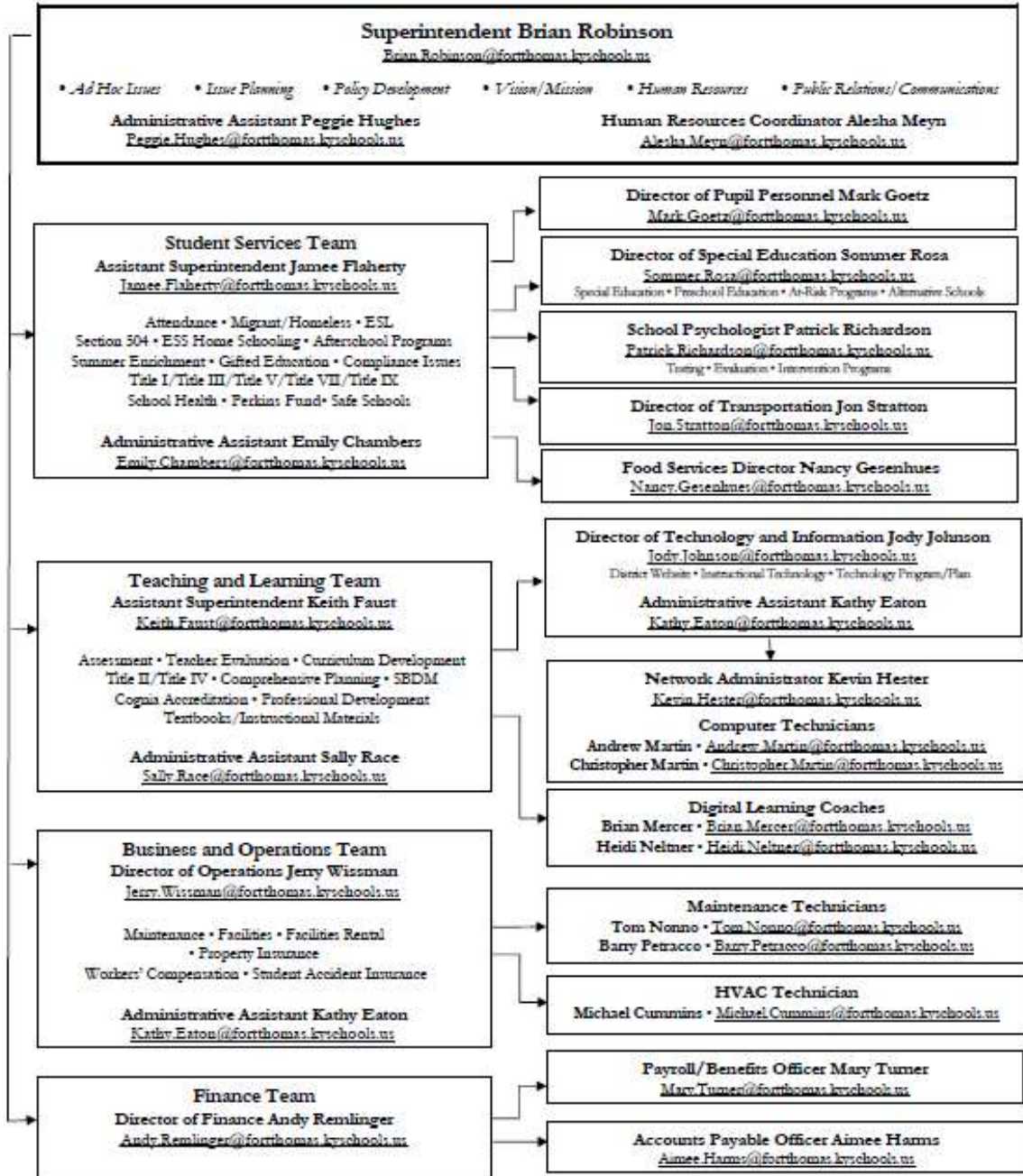
Rich in tradition and focused on the future, the Fort Thomas Independent School District provides engaging and challenging learning experiences which foster creativity, curiosity and innovation, while inspiring all students to pursue lifelong learning and become productive members of the global community.

Future Policy Changes

Although every effort will be made to update the handbook on a timely basis, the Fort Thomas Independent Schools reserve the right, and has the sole discretion, to change any policies, procedures, benefits, and terms of employment without notice, consultation, or publication, except as may be required by contractual agreements and law. The District reserves the right, and has the sole discretion, to modify or change any portion of this handbook at any time.

Central Office Organizational Chart

Central Office Organizational Chart



School Year Calendar

FORT THOMAS INDEPENDENT SCHOOLS 2023-24 SCHOOL CALENDAR – Board Approved 1-9-23

July						
S	M	T	W	T	F	S
						1
2	3	4	5	6	7	8
9	10	11	12	13	14	15
16	17	18	19	20	21	22
23	24	25	26	27	28	29
30	31					

August						
S	M	T	W	T	F	S
		1	2	3	4	5
6	7	8	9	10	11	12
13	14	15	16	17	18	19
20	21	22	23	24	25	26
27	28	29	30	31		

September						
S	M	T	W	T	F	S
					1	2
3	4	5	6	7	8	9
10	11	12	13	14	15	16
17	18	19	20	21	22	23
24	25	26	27	28	29	30

October						
S	M	T	W	T	F	S
1	2	3	4	5	6	7
8	9	10	11	12	13	14
15	16	17	18	19	20	21
22	23	24	25	26	27	28
29	30	31				

November						
S	M	T	W	T	F	S
			1	2	3	4
5	6	7	8	9	10	11
12	13	14	15	16	17	18
19	20	21	22	23	24	25
26	27	28	29	30		

December						
S	M	T	W	T	F	S
					1	2
3	4	5	6	7	8	9
10	11	12	13	14	15	16
17	18	19	20	21	22	23
24	25	26	27	28	29	30
31						

Legend	
 No School	 Holiday
 Prof. Dev.	 Open/Close
 First/Last Students	 Make-up Days
 Late Arrival	

10 August
Opening Day
11, 14 August
Professional Development
16 August
First Day for Students

4 September
Holiday – Labor Day

5 October
No School - NKEA
6 October
Professional Development

7 November
No School – Election Day
22 November
Professional Development
23 November
Holiday - Thanksgiving
24 November
No School - Thanksgiving

20 December
Last School Day Before Winter Break
1 December
Holiday – New Year’s

Winter Break
December 21 – January 2

3 January
Schools Open
15 January
Holiday – MLK Day

16 February
No School – Make Up Day
19 February
No School – Presidents’ Day

28 March
Last School Day Before Spring Break
29 March
Professional Development

1-5 April
Spring Break
8 April
Schools Open

21 May
Election Day
24 May
Last Day for Students
27 May
Memorial Day
28 May
Make Up Day
29 May
Closing Day

January						
S	M	T	W	T	F	S
	1	2	3	4	5	6
7	8	9	10	11	12	13
14	15	16	17	18	19	20
21	22	23	24	25	26	27
28	29	30	31			

February						
S	M	T	W	T	F	S
				1	2	3
4	5	6	7	8	9	10
11	12	13	14	15	16	17
18	19	20	21	22	23	24
25	26	27	28	29		

March						
S	M	T	W	T	F	S
					1	2
3	4	5	6	7	8	9
10	11	12	13	14	15	16
17	18	19	20	21	22	23
24	25	26	27	28	29	30
31						

April						
S	M	T	W	T	F	S
	1	2	3	4	5	6
7	8	9	10	11	12	13
14	15	16	17	18	19	20
21	22	23	24	25	26	27
28	29	30				

May						
S	M	T	W	T	F	S
			1	2	3	4
5	6	7	8	9	10	11
12	13	14	15	16	17	18
19	20	21	22	23	24	25
26	27	28	29	30	31	

June						
S	M	T	W	T	F	S
						1
2	3	4	5	6	7	8
9	10	11	12	13	14	15
16	17	18	19	20	21	22
23	24	25	26	27	28	29
30						

*CLOSING DAY WILL BE ADJUSTED IF MAKE-UP DAYS ARE NOT NEEDED

Semester 1 84
Semester 2 93
Total 177

Student Days 177 Teacher Days 188

Make-up Days: 2/16, 5/28
*If necessary, after 5/29

Section

1

General Terms of Employment

Equal Opportunity Employment

As required by Title IX, the District does not discriminate on the basis of sex regarding admission to the District or in the educational programs or activities operated by the District. Inquiries regarding Title IX Sexual Harassment may be referred to the District Title IX Coordinator (TIXC), the Assistant Secretary for Civil Rights, or both.

Fort Thomas Independent Schools is an Equal Opportunity Employer. The District does not discriminate on the basis of race, color, religion, sex (including sexual orientation or gender identity), genetic information, national or ethnic origin, political affiliation, age, disabling condition, or limitations related to pregnancy, childbirth, or related medical conditions.

Reasonable accommodation for individuals with disabilities or limitations related to pregnancy, childbirth, or related medical conditions will be provided as required by law.

If considerations of sex, age or disability have a bona fide relationship to the unique requirements of a particular job or if there are federal or state legal requirements that apply, then sex, age or disability may be taken into account as a bona fide occupational qualification, provided such consideration is consistent with governing law.

If you have questions concerning District compliance with state and federal equal opportunity employment laws, contact Jamee Flaherty at the Central Office. **03.113**

Harassment/Discrimination/Title IX Sexual Harassment

Fort Thomas Independent Schools intend that employees have a safe and orderly work environment in which to do their jobs. Therefore, the Board does not condone and will not tolerate harassment of or discrimination against employees, students, or visitors to the school or District, any act prohibited by Board policy that disrupts the work place or the educational process and/or keeps employees from doing their jobs.

(Harassment/Discrimination/Title IX Sexual Harassment – continued)

Any employee who believes that he or she, or any other employee, student, or visitor to the school or District, is being or has been subjected to harassment or discrimination shall bring the matter to the attention of his/her Principal/immediate supervisor or the District's Title IX/Equity Coordinator as required by Board policy. The District will investigate any such concerns promptly and confidentially.

No employee will be subject to any form of reprisal or retaliation for having made a good-faith complaint under this policy. For complete information concerning the District's position prohibiting harassment/discrimination, assistance in reporting and responding to alleged incidents, and examples of prohibited behaviors, employees should refer to the District's policies and related procedures. **03.162**

The following have been designated to handle inquiries regarding nondiscrimination under Title IX and Section 504 of the Rehabilitation Act of 1973 and Title IX Sexual Harassment/Discrimination: **01.1**

Title IX Coordinator (TIXC):	Jamee Flaherty
Office Address:	28 N. Fort Thomas Ave., Fort Thomas, KY 41075
Office Email:	Jamee.flaherty@fortthomas.kyschools.us
Office Phone:	859.815.2011
504 Coordinator:	Jamee Flaherty
Office Address:	28 N. Fort Thomas Ave., Fort Thomas, KY 41075
Office Email:	Jamee.flaherty@fortthomas.kyschools.us
Office Phone:	859.815.2011

Any person may report sex discrimination, including sexual harassment (whether or not the person reporting is the person alleged to be the victim of conduct that could constitute sex discrimination or sexual harassment), in person, by mail, by telephone, or by electronic mail, using the contact information listed for the TIXC, or by any other means that results in the TIXC receiving the person's verbal or written report. Such a report may be made at any time (including during non-business hours) by using the telephone number or electronic mail address, or by mail to the office address, listed for the TIXC. **09.428111**

Title IX Sexual Harassment Grievance Procedures are located on the District Website.

Employees wishing to initiate a complaint concerning discrimination in the delivery of benefits or services in the District's school nutrition program should go to the link below or mail a written complaint to the U.S. Department of Agriculture, Director, Office of Adjudication, 1400 Independence Avenue, S.W., Washington D.C. 20250-9410, or email, program.intake@usda.gov.

http://www.ascr.usda.gov/complaint_filing_cust.html

Hiring

Except for noncontracted substitute teachers, all certified personnel are required to sign a written contract with the District.

A list of all District job openings is available at the Central Office and on the District web site.

For further information on hiring of certified personnel, refer to policy **03.11**.

Criminal Background Check and Testing

New certified hires and student teachers assigned within the District must have both a state and a federal criminal history background check and a letter (CA/N check) from the Cabinet for Health and Family Services documenting the individual does not have an administrative finding of child abuse or neglect in records maintained by the Cabinet.

An employee shall report to the Superintendent if the employee has been found by the Cabinet for Health and Family Services to have abused or neglected a child, and if the employee has waived the right to appeal such a substantiated finding or the finding has been upheld upon appeal. **03.11**

Link to DPP-156 Central Registry Check and more information on the required CA/N check:

<http://manuals.sp.chfs.ky.gov/chapter30/33/Pages/3013RequestfromthePublicforCANChecksandCentralRegistryChecks.aspx>

Medical Examinations

All newly employed certified personnel, including substitute teachers, shall present documentation of a medical examination performed by a licensed physician, physician assistant (PA), or advanced registered nurse practitioner or by a licensed medical practitioner of the employee's choice. Medical examinations performed within a ninety (90)-day period prior to initial employment will be accepted. Unless otherwise provided in Board policy, the cost of the medical examination must be borne by the employee.

The initial medical examination shall include a risk assessment for tuberculosis as required by Kentucky Administrative Regulation. Individual identified by that assessment as being at high risk for TB shall be required to undergo a tuberculin skin test or a blood test for Mycobacterium tuberculosis (BAMT) as required by 702 KAR 001:160. **03.111**

Personnel Records

One (1) master personnel file is maintained in the Central Office for each employee. Employees may inspect their personnel files. The Principal/supervisor may maintain a personnel folder for each person under his/her supervision. Employees may inspect their personnel files. **03.15**

Retention of Recordings

Employees shall comply with the statutory requirement that school officials are to retain any digital, video, or audio recording as required by law. **01.61**

Certification

It shall be the responsibility of the employee to see that the required certification is on file in the Central Office and is kept current at all times. **03.112**

Transfer of Tenure

The continuing service contract status of a teacher shall not be terminated when the teacher leaves employment, all provisions of KRS 161.720 to KRS 161.810 to the contrary notwithstanding, and the continuing service contract status shall be transferred to the next school district, for a period of up to seven (7) months from the time employment in the first school district has terminated.

All teachers who have attained continuing-contract status from another Kentucky district serve a one (1)-year probationary period before being considered for continuing-contract status in the District. **03.115**

Job Responsibilities

Every certified employee is assigned an immediate supervisor. All employees receive a copy of their job description and responsibilities for review. Immediate supervisors may assign other duties as needed. Employees should ask their supervisor if they have questions regarding their assigned duties and/or responsibilities. **03.11, 03.132**

All employees are expected to use sound judgment in the performance of their duties and take reasonable and commonly accepted measures to protect the health, safety, and well-being of others, as well as District property. In addition, employees shall cooperate fully with all investigations conducted by the District as authorized by policy or law. **03.133**

Certified Employees: All teachers in the District shall review records of assigned students to determine whether an IEP or 504 plan is in place.

Confidentiality

In certain circumstances employees will receive confidential information regarding students' or employees' medical, educational or court records. Employees are required to keep student and personnel information in the strictest confidence and are legally prohibited from passing confidential information along to any unauthorized individual. Employees with whom juvenile court information is shared as permitted by law shall be asked sign a statement indicating they understand the information is to be held in strictest confidence.

(Confidentiality – continued)

Employees shall follow Policy 09.14 and related procedures concerning release of student record information.

Except as noted in Policy 09.14 or as otherwise permitted by law, employees may only share confidential, personally identifiable student record information with the following:

- The student;
- The student’s parent/guardian; or
- Other individuals with a legitimate educational interest. (If there are questions concerning such requests, certified employees are to confirm with the Principal/designee concerning any requests they receive regarding release of student record information.)

This shall include information transmitted by the substitute by any means, including oral, written, or electronic. Examples of protected information include, but are not limited, to a student’s grades, disciplinary or attendance records, and health/medical information.

Access to be Limited

Employees may only access student record information in which they have a legitimate educational interest. **03.111/09.14/09.213/09.43**

Both federal law and Board policy prohibit employees from making unauthorized disclosure, use or dissemination of personal information regarding minors over the Internet. **08.2323**

Information Security Breach

Information security breaches shall be handled in accordance with KRS 61.931, KRS 61.932, and KRS 61.933 including, but not limited to, investigations and notifications.

Within seventy-two (72) hours of the discovery or notification of a security breach, the District shall notify the Commissioner of the Kentucky State Police, the Auditor of Public Accounts, the Attorney General, and the Education Commissioner. **01.61**

Course of Study/Syllabus Requirement

The Superintendent shall develop and disseminate to the schools a curriculum guide that reflects the District’s course of study for primary school through twelfth grade and that will include minimum statutory and regulatory requirements and additional requirements as specified by the Board. Each school council may adopt the curriculum guide for implementation, or the school may design its own curriculum guide, provided it is aligned with the Kentucky Program of Studies and the Core Content for assessment. If the school chooses to design its own curriculum guide, the Principal shall provide a copy to the Central Office each year.

(Course of Study/Syllabus Requirement – continued)

Teachers at all levels (preschool through adult education) shall develop a syllabus for each course, grade/level or subject (single and/or interdisciplinary area) they teach to communicate to students and parents the following information:

1. Prerequisites for the course
2. Topics to be covered
3. Order of material to be covered
4. Resources to be used
5. Planned testing points
6. Performance standards and expectations

Each year teachers shall distribute a current syllabus to their students and the students' parents/guardians.

The Principal/designee shall make pertinent student achievement data available to each teacher and, in keeping with policies set by the council, monitor the process of reviewing and updating syllabi in response to such data. **08.11**

Teacher-Parent Communications

To demonstrate the District's commitment to productive school-home communications, teachers are expected to respond to requests from parents via phone calls, e-mail messages, and written requests within forty-eight (48) hours of receipt of the message unless extraordinary circumstances prevail. If the message is received on Friday or the day before a break in the school calendar, every reasonable effort shall be made to respond that day, but certainly no later than the next school day.

Grading

Teachers shall maintain detailed, systematic records of the achievement of each student. The grading standards established in Board policy shall be followed. A student's grade shall not be lowered as a disciplinary action. **08.221**

Teachers will maintain the computerized grade book and grade reporting program to report student progress to parents. Grades should be updated weekly.

Because there occasionally may be a question about the basis for a grade, unless a test is under an outstanding request to inspect or review under FERPA, teachers shall retain semester tests and finals for thirty (30) calendar days following the end of the semester. They shall retain all end-of-unit and grading period tests for thirty (30) calendar days following the date a graded test is returned to the entire class.

(Grading – continued)

Exceptions:

- Teachers may maintain tests for a longer period than required by this policy and shall maintain such records as long as may be required by the student's IEP or 504 plan.
- Teachers are not required to maintain copies of tests that are returned for students to keep.

Supervision Responsibilities

While at school or during school-related or school-sponsored activities, students must be under the supervision of a qualified adult at all times. All District employees are required to assist in providing appropriate supervision and correction of students. Employees shall not send students on errands off school property. **09.221**

Employees are expected to take reasonable and prudent action in situations involving student welfare and safety, including following District policy requirements for intervening and reporting to the Principal or to their immediate supervisor those situations that threaten, harass, or endanger the safety of students, other staff members, or visitors to the school or District. Such instances shall include, but are not limited to, bullying or hazing of students and harassment/discrimination of staff, students or visitors by any party.

The Student Discipline Code shall specify to whom reports of alleged instances of bullying shall be made. **03.162/09.422/ 09.42811**

In fulfilling their supervision responsibilities, teachers are required to enforce the Student Discipline Code adopted by the Board of Education and discipline policies adopted by the school council. **09.43/09.438**

Bullying/Hazing

"Bullying" is defined as any unwanted verbal, physical, or social behavior among students that involves a real or perceived power imbalance and is repeated or has the potential to be repeated:

1. That occurs on school premises, on school-sponsored transportation, or at a school-sponsored event; or
2. That disrupts the education process.

"Hazing" is defined as an action which endangers the mental or physical health of a minor or student for the purpose of recruitment, initiation into, affiliation with, or enhancing or maintaining membership or status within any organization*, including but not limited to actions which cause, coerce, or force a minor or a student to:

1. Violate federal or state criminal law;

(Bullying/Hazing – continued)

2. Consume any food, liquid, alcoholic liquid, drug, tobacco product, or other controlled substance which subjects the minor or student to a risk of mental harm or physical injury;
3. Endure brutality of a physical nature, including whipping, beating or paddling, branding, or exposure to the elements;
4. Endure brutality of a mental nature, including personal servitude, sleep deprivation, or circumstances which would cause a reasonable person to suffer substantial mental distress;
5. Endure brutality of a sexual nature; or
6. Endure any other activity that creates a reasonable likelihood or mental harm or physical injury to the minor or student.

“Organization” is defined as a number of persons who are associated with a school or postsecondary education institution and each other, including a student organization, fraternity, sorority, association, corporation, order, society, corps, club, or similar group and includes any student organization registered pursuant to policies of the school or postsecondary education institution at any time during the previous five (5) years. **09.422**

School-Related Student Trips

The Board encourages school-related trips that are of significant educational value. Such trips are to be an extension of the regular classroom work and an integral part of the educational program. School-related student trips shall include all trips, excursions and events under the sponsorship of the school, including those during which a student represents the District.

Prior approval of the Principal/designee is required for all trips. Any trip falling outside designated categories set out in Board policy shall require prior approval of both the Principal and Superintendent. Because of safety and liability concerns, it is imperative that trip sponsors review and comply with Board policy and applicable administrative procedures.

Adults who voluntarily contribute their time to serve as chaperones on field trips shall be under the direct supervision of school personnel assigned to the activity. Chaperones must be at least twenty-one (21) years old and those volunteering to assist with supervision for trips shall attend training designated by the Superintendent prior to serving as a chaperone.

Parents are to be informed of the nature of the trip, the approximate departure and return times, means of transportation, and any other relevant information. Parents must give prior written approval for students to participate in school-sponsored trips.

Prior to the student's or group's departure, the teacher/coach/sponsor supervising the trip shall file written parental permission slips with the Principal. The teacher also shall provide the Principal with a listing of participating students and a copy of the complete itinerary, including times and destinations.

(School Related Student Trips – continued)

On all trips, the teacher/coach/sponsor shall take a student roster that includes the names of all students, emergency contact information, and pertinent medical information. Athletics, teams, clubs, and organizations that have on-going events shall have one permission form on file that is obtained annually. **09.36**

Hours of Duty

Certified employees are not allowed to leave their job assignments during duty hours without the express permission of their immediate supervisor.

Teachers shall be on duty no later than fifteen (15) minutes before students are scheduled to arrive and shall remain in the building at least fifteen (15) minutes after the dismissal time for students. For complete information, refer to policy. **03.1332**

Employees shall attend meetings called by the Superintendent, building Principals, Supervisors or their designees. Absence from staff meetings must have approval of the administrator who called the meeting. **03.1335**

Planning

Teachers shall devote their planning periods to the following activities:

1. Planning for the instructional program;
2. Conferring with parents, students, administrators, and supervisors;
3. Studying and maintaining student records; and
4. Other duties deemed appropriate by the Principal. **03.126**

Salaries and Payroll Distribution

Payroll will be issued according to a schedule approved annually by the Board. At the end of the school year, employees who have completed their duties may request to be paid their remaining salary before the end of the fiscal year (June 30). **03.121**

Salaries for certified personnel are based on a single-salary schedule reflecting the school term as approved by the Board in keeping with statutory requirements. Compensation for additional days of employment is prorated on the employee's base pay.

Determination of and changes to certified employees' rank and experience are determined in compliance with Policy 03.121. No later than forty-five (45) days before the first student attendance day of each year or June 15th, whichever comes first, the Superintendent will notify certified personnel of the best estimate of their salary for the coming year.

The salary schedule shall include provisions for teachers who qualify for the following ranks:

(Salaries and Payroll Distribution – continued)

Rank IV - Teachers holding emergency certificates and who have ninety-six (96) to one hundred twenty-eight (128) semester hours of approved college training or the equivalent.

Rank IVA - Teachers holding emergency certificates who have an approved four (4) year college degree, or a teaching certificate from another state, and who are teaching in their field.

Rank III - Teachers holding regular certificates and who have an approved four (4) year college degree or the equivalent.

Rank IIIA - Teachers with a Bachelor's Degree or its equivalent, plus fifteen (15) semester hours or more of graduate work.

Rank II - Teachers holding regular certificates and who have a master's degree in a subject field approved by the Education Professional Standards Board or equivalent continuing education.

Rank IIA – Teachers with a Master's Degree or its equivalent, plus fifteen (15) semester hours or more of graduate work, or the successful completion of two (2) of the four (4) required components of National Board Certification leading to a Rank I certificate.

Rank I - Teachers holding regular certifications and who have a master's degree in a subject field approved by the Education Professional Standards Board or equivalent continuing education and who have earned thirty (30) semester hours of approved graduate work or equivalent continuing education; and those teachers who have met the requirements for Rank II and hold current certification of the National Board for Professional Teaching Standards.

Reduction in Salary and Responsibilities

Salaries for teachers shall not be less than the preceding year unless such reduction is part of a uniform plan affecting all teachers in the entire District or unless there is a reduction of responsibilities. Reduction of responsibility for teachers may be accompanied by a corresponding reduction in salary. Written notice that states the specific reason(s) for the reduction shall be furnished to teachers no later than ninety (90) days before the first student attendance day of the school year. **03.1212**

Purchasing

Employees are required to follow applicable state law and regulations and local policies and administrative procedures when making purchases on behalf of the District.

All purchases shall require the prior approval of the Superintendent or the Superintendent's designee. Administrators designated by the Superintendent may initiate a purchase order, subject to the limits of their designated budgeted funds and approval by their supervisor.

The Board shall not be responsible for expenditures not properly authorized and not made according to the purchasing procedures developed by the Superintendent. **04.31**

(Purchasing – continued)

With the exception of recurring monthly payments such as utilities and fixed charges, no bill shall be paid without the following supportive information:

1. A properly issued purchase order initiated by the appropriate leadership team member and signed by the Superintendent or designated representative;
2. An invoice for goods or services received; and
3. Confirmation that invoiced materials were received in accurate quantity and in good order. **04.3111**

Internal school account purchases must be supported by a properly executed purchase request and authorization for payment by the Principal.

Because no school activity fund is permitted to end the fiscal year with a deficit balance, a school shall not expend or commit to expend any activity fund in excess of revenue received for the fiscal year. Should this occur, the employee(s) responsible shall be subject to appropriate disciplinary action, and the Superintendent may require the school/council to present for Board approval a plan for reimbursement for any amount. **04.312**

Section

2

Benefits and Leaves

Insurance

The Board provides unemployment insurance, workers' compensation and liability insurance for all employees. In addition, the state of Kentucky provides group health and life insurance to employees who are eligible as determined by Kentucky Administrative Regulation. **03.124**

Salary Deductions

The Fort Thomas Independent School District makes all payroll deductions required by law. Employees may choose from the following optional payroll deductions:

- Health/life insurance program;
- Tax Sheltered Annuity program;
- Income protection insurance;
- Credit Union;
- State approved deferred compensation plan;
- United Way;
- State-designated Flexible Spending Account (FSA) and Health Reimbursement Account (HRA) plans; and
- KEPAC dues.

03.1211

Cafeteria Plan

The Fort Thomas Independent School District offers employees a cafeteria plan of benefits, which offers the following types of insurance: health, dental, term life, cancer, in-hospital indemnity, and disability income protection. Employees eligible to participate are those who are employed to work for the District at least one-half (1/2) time during the school calendar year. **03.1213**

Expense Reimbursement

Provided the Superintendent/designee has given prior approval to incur necessary and appropriate expenses school personnel are reimbursed for travel that is required as part of their duties or for school-related activities approved by the Superintendent/designee. Allowable expenses include mileage (based on state rate), gasoline used for Board vehicles, tolls and parking fees, car rental, fares charged for travel on common carriers (plane, bus, etc.), food (when District business requires an overnight stay), and lodging. Itemized receipts must accompany requests for reimbursement that exceed \$5.00.

FOOD PER DIEM

An overnight stay is required for reimbursement for meals. Actual monies spent for food while on out-of-District trips to Standard or Normal Rate locations shall be paid on a per diem basis for meals. The amount claimed for a meal shall not include any charges for alcoholic beverages. This amount may include a tip of no more than twenty percent (20%) of the total meal cost. The cost of meals consumed during such travel shall be reimbursed at a rate not to exceed fifty dollars (\$50.00) per twenty-four (24) hour day starting from the time of departure. Reimbursement for Standard or Normal Rate locations will be limited as follows:

- Breakfast \$10.00
- Lunch \$15.00
- Dinner \$25.00

For travel to Non-Standard or High Rate cities, meals will be reimbursed at the daily per diem rate established by the General Services Administration (GSA). (www.gsa.gov/perdiem)

Itemized receipts will be required to claim reimbursement for meals. Reimbursement shall not be made for food and/or beverages consumed outside of meal times (snacks, soft drinks, etc.).

Employees must submit travel vouchers within one (1) week of travel and will not be reimbursed without proper documentation. Should employees receive reimbursement based on incomplete or improper documentation, they may be required to reimburse the District. **03.125**

(Expense Reimbursement – continued)

To receive reimbursement from the District, employees should only fill out a claim form for authorized travel expenses that were incurred by the employee or for perishable items that are needed for their classrooms. All other items should be purchased using the District's standard purchase order form. The purchase order will then be processed by central office and sent to the vendor so to be filled. (See Purchasing section.)

Holidays

Certified employees who are employed for 177 days or more shall be paid for four (4) holidays which shall be designated in the official school calendar. Employees who work 240 or more days per school year shall be paid for additional holidays as specified in policy if they occur on days when school is not in session for students and/or staff members. **03.122**

Vacations

Administrators who work 260 or more days per school year shall be eligible for twenty (20) vacation days with pay per year. Administrators who begin service with the District later than July 1 shall receive a pro-rata number of vacation days. All pro-rata calculations involving administrators working a full calendar year shall be based upon 260 days per contract year.

Use of vacation days must be approved in advance by the Superintendent or the Superintendent's designee. Days when teachers are expected to work as designated in the official school calendar may not be used as vacation days for administrators. As of June 30, twelve-month employees may carry over up to five (5) days of unused vacation leave for use in future years. However, no employee shall accumulate more than 25 days of vacation at any given time. **03.122**

Leave Policies

In order to provide the highest level of service, employees are expected to be at work and on time every day. However, when circumstances dictate, the Board provides various types of leaves under which absences may be authorized. Employees who must be absent or tardy should inform their immediate supervisor as soon as possible.

Staff members in positions requiring substitutes must notify their immediate supervisor of an impending absence. If the immediate supervisor cannot be reached within two (2) hours prior to the beginning of the work day, employees are to call the supervisor's secretary. If unable to reach either the Principal or the secretary, teachers may contact an approved substitute directly. **03.123**

Listed below is general information regarding several types of leave available to employees. Please note that in many cases (as specified in policy) a written request, submitted for approval before leave begins or after the employee returns, is required.

Employees on extended leave, including those on professional leave serving in charter schools, who plan to return the next school year must notify the Superintendent/designee in writing of their intention to return to work by April 1.

(Leave Policies – continued)

Authorization of leave and time taken off from one’s job shall be in accordance with a specific leave policy. Absence from work that is not based on appropriate leave for which the employee is qualified may lead to disciplinary consequences, up to and including termination of employment.

Employee shall not experience loss of income or benefits, including sick leave, when they are assaulted while performing assigned duties and the resulting injuries qualify them for workers' compensation benefits. **03.123**

For complete information regarding leaves of absence, refer to the District’s *Policy Manual*.

Personal Leave

Full-time certified employees are entitled to two (2) days of paid personal leave each school year. Part-time employees or employees who work for less than a full year are entitled to a prorata part of the authorized personal leave days. Unless prevented by circumstances beyond their control, employees must notify the building Principal or immediate supervisor at least three (3) school calendar days prior to a planned absence. The supervisor must approve the leave date, but no reasons will be required for the leave. Employees taking personal leave must file a personal statement stating that the leave was personal in nature.

Employees who must be away from school for personal reasons and who are unable to obtain the required prior approval, shall make written request for approval of the leave date within two (2) work days of returning to work.

Personal leave shall not be granted on a professional development day or on the day prior to or the day following any non-instructional day (e.g. Labor Day, NKEA, Spring Break) which falls in the school year calendar. **03.1231**

Personal leave days not taken during the school year shall accumulate up to four (4) days. Personal leave days accumulated in excess of four (4) days shall be credited to the employee as sick leave days.

Sick Leave

Full-time certified employees are entitled to ten (10) days of paid sick leave each school year. Part-time employees or employees hired after the opening day of school who work for less than a full year are entitled to a prorata part of the authorized sick leave days. Sick leave days not taken during the school year they were granted accumulate without limit. At the end of each school year, employees who do not use any paid or unpaid leave, excluding professional leave, during the school year shall have one (1) additional day of sick leave added to their accumulated sick leave balance. An employee claiming sick leave must file a personal statement or a certificate of a physician stating that the employee was ill or that the employee was absent for the purpose of attending to a member of the immediate family who was ill. **03.1232**

See the “Retirement” section for information about reimbursement for unused sick leave at retirement.

Sick Leave Donation Program

Employees who have accumulated more than fifteen (15) days of sick leave may request to donate sick leave days to another employee authorized to receive the donation. Employees may not disrupt the workplace while asking for donations. Applications to donate sick leave should be returned to Mary Turner.

Any sick leave that is not used will be returned on a prorated basis to the employees who donated days. **03.1232**

Sick Leave Bank

Employees may choose to participate in the District's Sick Leave Bank, which has been established for the purpose of providing voluntarily participating District employees who have exhausted all of their accumulated sick leave days and other available paid leave days, the means of obtaining additional sick leave days.

Sick Leave Bank days shall be used only for illness of, or an accident involving, a bank member. Days shall not be granted for a family member's illness or any circumstance other than personal illness or accident.

Upon receipt by the Superintendent of a signed statement of intent, any employee who receives sick leave benefits may contribute to the Sick Leave Bank.

Each employee who chooses to join the Sick Leave Bank shall initially contribute two (2) days of annual sick leave to the bank. Each year thereafter, s/he shall contribute one (1) sick day until a total of ten (10) days have been contributed. For complete information concerning administration of the Bank, eligibility for days, and appeals, please refer to policy. **03.12321**

Family and Medical Leave

Employees are eligible for up to twelve (12) workweeks of family and medical leave each school year, if they have been employed by the District for twelve (12) months, have worked at least 1,250 hours during the twelve (12) months preceding the start of the leave, and otherwise qualify for family and medical leave for one of the reasons below:

1. For the birth and care of an employee's newborn child or for placement of a child with the employee for adoption or foster care;
2. To care for the employee's spouse, child or parent who has a serious health condition, as defined by federal law;
3. For an employee's own serious health condition, as defined by federal law, that makes the employee unable to perform her/his job.
4. To address a qualifying exigency (need) defined by federal regulation arising out of the covered active duty or call to active duty involving deployment to a foreign country of the employee's spouse, son, daughter, or parent who serves in a reserve component or as an active or retired member of the Regular Armed Forces or Reserve in support of a contingency operation; and

(Family and Medical Leave – continued)

5. To care for a covered service member (spouse, son, daughter, parent or next of kin) who has incurred or aggravated a serious injury or illness in the line of duty while on active duty in the Armed Forces that has rendered or may render the family member medically unfit to perform his/her duties or to care for a covered veteran with a serious injury or illness as defined by federal regulations.

When family and medical military caregiver leave is taken based on a serious illness or injury of a covered service member, an eligible employee may take up to twenty-six (26) workweeks of leave during a single twelve-month period.

Paid leave used under this policy will be subtracted from the twelve (12) workweeks to which the employee is entitled. Employees should contact their immediate supervisor as soon as they know they will need to use Family and Medical Leave. **03.12322**

On the following page is a summary of the major provisions of the Family and Medical Leave Act (FMLA) provided by the United States Department of Labor.

FML Basic Leave Entitlement

FMLA requires covered employers to provide up to 12 weeks of unpaid, job-protected leave to eligible employees for the following reasons:

- For incapacity due to pregnancy, prenatal medical care or child birth;
- To care for the employee’s child after birth, or placement for adoption or foster care;
- To care for the employee’s spouse, son, daughter or parent, who has a serious health condition; or
- For a serious health condition that makes the employee unable to perform the employee’s job.

Military Family Leave Entitlements - Eligible employees whose spouse, son, daughter or parent is on covered active duty or call to covered active duty status may use their 12-week leave entitlement to address certain qualifying exigencies. Qualifying exigencies may include attending certain military events, arranging for alternative childcare, addressing certain financial and legal arrangements, attending certain counseling sessions, and attending post-deployment reintegration briefings.

FMLA also includes a special leave entitlement that permits eligible employees to take up to 26 weeks of leave to care for a covered servicemember during a single 12-month period. A covered servicemember is: (1) a current member of the Armed Forces, including a member of the National Guard or Reserves, who is undergoing medical treatment, recuperation or therapy, is otherwise in outpatient status, or is otherwise on the temporary disability retired list, for a serious injury or illness*; or (2) a veteran who was discharged or released under conditions other than dishonorable at any time during the five-year period prior to the first date the eligible employee takes FMLA leave to care for the covered veteran, and who is undergoing medical treatment, recuperation, or therapy for a serious injury or illness.*

*The FMLA definitions of “serious injury or illness” for current servicemembers and veterans are distinct from the FMLA definition of “serious health condition”.

Benefits and Protections - During FMLA leave, the employer must maintain the employee’s health coverage under any “group health plan” on the same terms as if the employee had continued to work. Upon return from FMLA leave, most employees must be restored to their original or equivalent positions with equivalent pay, benefits, and other employment terms.

Use of FMLA leave cannot result in the loss of any employment benefit that accrued prior to the start of an employee’s leave.

Eligibility Requirements - Employees are eligible if they have worked for a covered employer for at least 12 months, have 1,250 hours of service in the previous 12 months*, and if at least 50 employees are employed by the employer within 75 miles.

*Special hours of service eligibility requirements apply to airline flight crew employees.

Definition of Serious Health Condition - A serious health condition is an illness, injury, impairment, or physical or mental condition that involves either an overnight stay in a medical care facility, or continuing treatment by a health care provider for a condition that either prevents the employee from performing the functions of the employee’s job, or prevents the qualified family member from participating in school or other daily activities.

Subject to certain conditions, the continuing treatment requirement may be met by a period of incapacity of more than 3 consecutive calendar days combined with at least two visits to a health care provider or one visit and a regimen of continuing treatment, or incapacity due to pregnancy, or incapacity due to a chronic condition. Other conditions may meet the definition of continuing treatment.

Use of Leave - An employee does not need to use this leave entitlement in one block. Leave can be taken intermittently or on a reduced leave schedule when medically necessary. Employees must make reasonable efforts to schedule leave for planned medical treatment so as not to unduly disrupt the employer’s operations. Leave due to qualifying exigencies may also be taken on an intermittent basis.

Substitution of Paid Leave for Unpaid Leave - Employees may choose or employers may require use of accrued paid leave while taking FMLA leave. In order to use paid leave for FMLA leave, employees must comply with the employer’s normal paid leave policies.

Employee Responsibilities - Employees must provide 30 days advance notice of the need to take FMLA leave when the need is foreseeable. When 30 days notice is not possible, the employee must provide notice as soon as practicable and generally must comply with an employer’s normal call-in procedures.

Employees must provide sufficient information for the employer to determine if the leave may qualify for FMLA protection and the anticipated timing and duration of the leave. Sufficient information may include that the employee is unable to perform job functions, the family member is unable to perform daily activities, the need for hospitalization or continuing treatment by a health care provider, or circumstances supporting the need for military family leave.

Employees also must inform the employer if the requested leave is for a reason for which FMLA leave was previously taken or certified. Employees also may be required to provide a certification and periodic recertification supporting the need for leave.

Employer Responsibilities - Covered employers must inform employees requesting leave whether they are eligible under FMLA. If they are, the notice must specify any additional information required as well as the employees’ rights and responsibilities. If they are not eligible, the employer must provide a reason for the ineligibility.

Covered employers must inform employees if leave will be designated as FMLA-protected and the amount of leave counted against the employee’s leave entitlement. If the employer determines that the leave is not FMLA-protected, the employer must notify the employee.

Unlawful Acts by Employers - FMLA makes it unlawful for any employer to: interfere with, restrain, or deny the exercise of any right provided or to discharge or discriminate against any person for opposing any practice made unlawful by FMLA or for involvement in any proceeding under or relating to FMLA.

Enforcement - An employee may file a complaint with the U.S. Department of Labor or may bring a private lawsuit against an employer. FMLA does not affect any Federal or State law prohibiting discrimination, or supersede any State or local law or collective bargaining agreement which provides greater family or medical leave rights.

Quarantine Leave

Employees may, per Board policy, be eligible to receive at least ten (10) days for quarantine due to exposure to a reportable infectious or contagious disease under 902 KAR 2:020 or any other infectious or contagious disease designated as reportable to a local health department or the Department for Public Health by a valid order or administrative regulation of the local health department serving the school District or the Department for Public Health.

Leave granted shall be on a day-by-day basis, as needed, and shall not accumulate or carry over year to year, and shall not be transferrable to any other classification of paid leave established by KRS 161.155, KRS 161.154, or Board policy. **03.12323**

Maternity/Parental Leave

Certified employees may use up to thirty (30) days of sick leave immediately following the birth or adoption of a child.

The parent of a newborn or an employee who adopts a child may also request an unpaid leave of absence not to exceed twelve (12) workweeks.

Employees eligible for family and medical leave are entitled to up to twelve (12) workweeks of unpaid leave to care for the employee's child after birth or placement of a child with the employee for adoption or foster care. Leave to care for an employee's healthy newborn baby or minor child who is adopted or accepted for foster care must be taken within twelve (12) months of the birth or placement of the child. **03.1233**

The Board may only request medical information necessary to decide whether to grant a leave of absence; shall not request or retain unnecessary medical information; and shall not disclose any medical information received, except as permitted by state and federal law. **03.1233**

Extended Disability Leave

Unpaid disability leave for the remainder of the school year is available to employees who need it. Thereafter, leave may be extended by the Board in increments of no more than one (1) year.

The Superintendent may require an employee to secure a medical practitioner's verification of a medical condition that will justify the need for disability leave. **03.1234**

The Board may only request medical information necessary to decide whether to grant a leave of absence; shall not request or retain unnecessary medical information; and shall not disclose any medical information received, except as permitted by state and federal law. **03.1234**

Educational Leave

The Board may grant certified employees unpaid leave for a period no longer than two (2) consecutive years for educational or professional purposes. Leave may be granted for full-time attendance at universities or other training or professional activities. Leave will not be granted for part-time educational activities. Nor shall certified employees be granted educational/ professional leave for the purpose of complying with statutory and regulatory requirements for completion of a planned fifth year program within a period of ten (10) years after a teaching certificate is issued initially.

The Board shall grant a two (2) year unpaid leave to employees under continuing service contracts who have been offered employment with a charter school.

A teacher with continuing status shall notify the District of the teacher's intent to work in a converted charter school.

A teacher working in a converted charter school shall notify the District of the teacher's intent to return to employment the next school year by April 15 of each year of the granted leave.

Written application for educational/professional leave must be made at least sixty (60) days before the leave is to begin. **03.1235**

Emergency Leave

Full-time certified employees are entitled to two (2) days of emergency leave with pay each school year. Part-time employees and employees who work for less than a full year are entitled to a prorata part of the authorized emergency leave days.

Approved reasons for taking emergency leave include: bereavement, personal disasters, legal/court appearances and others involving extreme hardships as specifically approved in advance by the Superintendent/designee. Persons taking emergency leave must file a personal statement stating the specific reasons for their absence. **03.1236**

Jury Leave

Any certified employee who serves on a jury in local, state or federal court will be granted paid leave (minus any jury pay, excluding expense reimbursement) for the period of her/his jury service.

Employees who will be absent from work to serve on a jury must notify their immediate supervisor in advance. **03.1237**

Military/Disaster Services Leave

Military leave is granted under the provisions and conditions specified in law. As soon as they are notified of an upcoming military-related absence, employees are responsible for notifying their immediate supervisor.

The Board may grant disaster services leave to requesting eligible employees. **03.1238**

Unpaid Leave

Leaves without pay may be granted upon written request to the Principal or Superintendent and approval of the Board provided the leave is for educational or professional purposes, or for illness, maternity, adoption of a child or children, or other disability. **03.123**

Section

3

Personnel Management

Transfer

Transfer or reassignment of certified personnel will be made no later than thirty (30) days before the first student attendance day of the school year except to fill vacancies created by illness, death, or resignations; to reduce or increase personnel because of a shift in school population; to make personnel adjustments after consolidation or merger; or to assign personnel according to their major or minor fields of training.

Employees charged with a felony offense may be transferred to a second position with no change in pay until such time as they are found not guilty, the charges are dismissed, their employment is terminated, or the Superintendent determines that further personnel action is not required. **03.1311**

Employee Discipline

Disciplinary action, termination and nonrenewal of contracts are the responsibility of the Superintendent. **03.17**

Employee Separation

An employee who voluntarily leaves the District shall complete an exit survey that includes, but is not limited to the position vacated, the employee's years of service in the position and in the District, if the employee is taking a similar position in another district, and the reason(s) provided for leaving the District. This information shall be reported to the Kentucky Department of Education (KDE) by the District in a system developed by KDE without providing personally identifiable information. **03.17/03.272**

Resignation/Termination of Contract by Employee

Certified employees who resign or terminate their contracts must do so in compliance with KRS 161.780. No teacher shall be permitted to terminate his or her contract within fifteen days prior to the first instructional day of the school term at a school to which a teacher is assigned or during the school term without the consent of the Superintendent. A teacher shall be permitted to terminate his or her contract at any other time when schools are not in session by giving two (2) weeks written notice to the employing superintendent. **03.17**

Retirement

Certified employees who decide to retire should give the Superintendent/designee notice as far in advance as possible, but no later than two (2) weeks before retirement. Retirement benefits are solely a matter of contract between the employee and the Teachers' Retirement System.

The Board compensates employees only upon initial retirement for each unused sick day at the rate of (30%) of the daily salary, based on the employee's last annual salary. For personnel who begin employment with a local school district on or after July 1, 2008, unused sick leave days to be recognized in calculating reimbursement under KRS 161.155 shall not exceed 300 days.

In order to receive this compensation, the employee must inform the Superintendent of the final decision to retire by April 15 of the year in which the retirement is to occur.

Upon death of an employee in active contributing status who was eligible to retire by reason of service, the District shall compensate the estate of the employee. **03.175**

Evaluations

All information regarding evaluation of certified personnel may be found in the Certified Staff Evaluation Handbook. **03.18**

Professional Development

For certified personnel, the professional development cycle shall run from the day following closing day up to the closing day of school for the next school year. District and school-based professional development must be conducted on days designated in the calendar. Flexible hours may be completed after school, on weekends or during the summer if activities are pre-approved by the professional development committee. Individuals may be excused from District and school-based professional development if they meet the requirements for claiming a sick day or an emergency day. Vacation and personal days may not be used on designated professional development days. All flexible hours must be completed.

(Professional Development – continued)

It is the responsibility of the individual to provide appropriate documentation for all completed professional development. The professional development requirement must be fulfilled before the last day of school each year. If it is not, repayment for the appropriate hours will be deducted from the individual's paycheck. Unless an employee is granted leave, failure to complete and document required professional development during the academic year will result in a reduction in salary and may be reflected in the employee's evaluation. **03.19**

District Training

Procedure **03.19 AP.23** may be used to track completion of local and state employee training requirements that apply across the District and maintain a record for the information of the Superintendent and Board.

Educational Study Seminars

All teachers must complete six (6) Educational Study Seminars within the first three (3) years of employment. During the two-year period, each teacher must complete a total of six (6) seminars. Completion of the program includes attendance at the required seminar session **and** completion of the applied project for each session. Completion of the Educational Study Seminars program is a condition of continued employment with the Fort Thomas Board of Education.

Section

4

Employee Conduct

Absenteeism/Tardiness/Substitutes

Employees are expected to notify their immediate supervisor when they must be tardy or absent. (See section on Leave Policies.)

Staff Meetings

Unless they are on leave, staff members shall attend called meetings. **03.1335**

Fund-Raising Activities

All schoolwide fund-raising activities must be approved by the Board. Requests must be channeled through the Principal and Superintendent. All other fund raising activities, including those sponsored by school clubs or classes, shall be approved by the Principal.

No student shall be compelled to participate in or meet any kind of quota in a fund-raising activity.

School personnel shall not collect money from students for any non-school sponsored activity.

Disrupting the Educational Process

Any employee who participates in or encourages activities that disrupt the educational process may be subject to disciplinary action, including termination.

Behavior that disrupts the educational process includes, but is not limited to:

(Disrupting the Educational Process – continued)

- conduct that threatens the health, safety or welfare of others;
- conduct that may damage public or private property (including the property of students or staff);
- illegal activity;
- conduct that interferes with a student’s access to educational opportunities or programs, including ability to attend, participate in, and benefit from instructional and extracurricular activities; or
- conduct that disrupts delivery of instructional services or interferes with the orderly administration of the school and school-related activities or District operations. **03.1325**

Controversial Issues

Teachers are expected to exercise reasonable and prudent judgment in the selection and use of materials and discussion of issues in their classrooms. All classroom materials shall be current, relevant, and significant to the instructional program. Materials shall be appropriate for and within the range of the knowledge, understanding, age and maturity of students.

Neither issues nor materials that have a potentially disruptive effect on the educational process shall be discussed or chosen. Teachers who suspect that materials or a given issue may be inconsistent with this policy shall confer with the Principal prior to the classroom use of the materials or discussion of the issue. If the Principal is in doubt, s/he shall confer with the Superintendent. **08.1353**

Political Activities

No District employee shall promote, organize, or engage in political activities while performing his/her duties or during the work day. Promoting or engaging in political activities shall include, but not be limited to, the following:

1. Encouraging students to adopt or support a particular political position, party, or candidate; or
2. Using school property or materials to advance the support of a particular political position, party, or candidate.

"Political positions" shall not be defined to include communications approved by the Superintendent to be distributed to students, parents or the community concerning District needs or proposed actions by the Board. Examples of such communications may include, but not be limited to, those addressing designation of attendance zones/areas and District facility and financial needs. **03.1324**

In addition, KRS 161.164 prohibits employees from taking part in the management of any political campaign for school board.

Employee Religious Expression

The District shall not punish or prohibit an employee from, or punish an employee for, engaging in private religious expression otherwise protected by the First Amendment to the United States Constitution absent a showing that the employee has engaged in actual coercion. 03.13241/03.23241

Drug-Free/Alcohol-Free Schools

Employees must not manufacture, distribute, dispense, be under the influence of, purchase, possess, use, or attempt to obtain, sell or transfer any of the following in the workplace or in the performance of duties:

1. Alcoholic beverages;
2. Controlled substances, prohibited drugs and substances, and drug paraphernalia; and or any narcotic drug, hallucinogenic drug, amphetamine, barbiturate, marijuana or any other controlled substance as defined by federal regulation.
3. Substances that "look like" a controlled substance. In instances involving look-alike substances, there must be evidence of the employee's intent to pass off the item as a controlled substance.

In addition, employees shall not possess prescription drugs for the purpose of sale or distribution.

Any employee who violates the terms of the District's drug-free/alcohol-free policies may be suspended, nonrenewed or terminated. Violations may result in notification of appropriate legal officials.

Any employee charged with and/or convicted of violation of criminal drug statutes shall, within five (5) working days, provide notification of the charge or conviction to the Superintendent. Teachers are subject to random or periodic drug testing following reprimand or discipline for misconduct involving illegal use of controlled substances.
03.13251

Employees who know or believe that the District's alcohol-free/drug-free policies have been violated must promptly make a report to the local police department, sheriff, or Kentucky State Police. **09.423**

Federal Motor Carrier Safety Administration (FMCSA) Drug and Alcohol Clearinghouse for CDL/CLP Operators

Reporting of the following information on individual drivers to the federal Clearinghouse is required: verified positive, adulterated, or substituted test results; confirmed alcohol tests at .04 or higher; refusal to submit to required tests; the reporting of actual knowledge (as defined by federal regulation) of Department of Transportation (DOT) regulatory violations, including violations based on prohibited on duty, pre-duty, or post-accident alcohol use and controlled substance use; and regulatory return to duty and follow-up testing information as applicable.

The District shall not allow a driver to perform any safety-sensitive function if the results of a Clearinghouse query on the driver demonstrate a disqualification as provided by regulation and such driver may be subject to personnel action up to and including termination. **06.221**

Weapons

Except where expressly and specifically permitted by Kentucky Revised Statute, carrying, bringing, using or possessing any weapon or dangerous instrument in any school building, on school grounds, in any school vehicle, or at any school-sponsored activity is prohibited. Except for School Resource Officers (SROs) as provided in KRS 158.4414, and authorized law enforcement officials, including peace officers and police as provided in KRS 527.070 and KRS 527.020, the Board prohibits carrying concealed weapons on school property. Staff members who violate this policy are subject to disciplinary action, including termination.

Employees who know or believe that this policy has been violated must promptly make a report to the local police department, sheriff, or Kentucky State Police. **05.48**

Tobacco, Alternative Nicotine Product, or Vapor Product

The use of any tobacco product, alternative nicotine product, or vapor product as defined in KRS 438.305 is prohibited for all persons and at all times on or in all property, including any vehicle, that is owned, operated, leased, or contracted for use by the Board and while attending or participating in any school-related student trip or student activity and is in the presence of a student or students.

School employees shall enforce the policy. A person in violation of this policy shall be subject to discipline or penalties as set forth by Board. **03.1327**

Use of School Facilities

Activities that are sponsored by approved student organizations, faculty groups, or school-related parent groups may take place in school facilities or on school grounds without charge when approved by the Principal and, when required, supervised by school personnel. Use of facilities and grounds by non-school-related groups is governed by Board policies and related procedures. However, such use will not be permitted when it would interfere with educational purposes. Use of school facilities/grounds by outside groups must first be approved by the Principal.

Private, for profit tutoring is not permitted on school property. All lessons/classes conducted on District property **MUST** be related to District curricular programs and must be approved in advance by the Superintendent or designee.

Use of School Property

All personnel shall be responsible for the school equipment, supplies, books, furniture, and apparatus under their care and use. Any damaged, lost, stolen, or vandalized property shall be reported to the employee's immediate supervisor.

No employee shall perform personal services for themselves or for others for pay or profit during work time and/or using District property or facilities.

An employee shall not use any District facility, vehicle, electronic communication system, equipment or materials for personal or private use or gain. These items (including security codes and electronic records such as e-mail) are District property.

Employees may not use a code, access a file, or retrieve any stored communication unless they have been given authorization to do so. Employees cannot expect confidentiality or privacy of the information in their e-mail accounts. Authorized District personnel may monitor the use of electronic equipment from time to time. **03.1321**

Once an individual is no longer employed with the District, he/she no longer retains the rights to a District-owned network account (this includes both file storage and electronic mail). Employees who leave at the end of the school year will have account access through June 30. Employees who leave midyear will have account access for up to one (1) month. Back-up/transfer of data (including emails) is the responsibility of each individual employee. **08.2323**

Use of School Vehicles

Employees who drive any Board-owned vehicle and/or transport students must annually provide the Superintendent/designee with a copy of their driving record. Employees who receive a traffic citation during the year must report the citation to the Superintendent/designee before driving a Board-owned vehicle or transporting students.

Employees who are drive vehicles to transport students shall undergo a biennial physical examination at their own expense. **03.1321**

(Use of School Vehicles – continued)

When students who are under eight (8) years old and between forty (40) and fifty-seven (57) inches in height are transported in District-owned or leased vehicles designed for ten (10) or fewer passengers, they shall be properly secured in a child booster seat. **06.2**

When employees choose to transport a student in their private vehicle, their personal insurance will provide primary liability coverage in case of an accident.

Responsible Use of Technology

The Board supports reasonable access to various information formats for students, employees and the community and believes it is incumbent upon users to utilize this privilege in an appropriate and responsible manner as required by Board policy and related procedures, which apply to all parties who use District technology.

Certified employees are required to follow Board policy and administrative procedures and guidelines designed to provide guidance for access to electronic media. In addition, all staff members are required to sign a written request/agreement prior to being granted independent access to electronic media involving District technological resources. Individuals who refuse to sign required responsible use documents or who violate District rules governing the use of District technology shall be subject to loss or restriction of the privilege of using equipment, software, information access systems or other computing and telecommunications technologies.

Except in cases involving students who are at least eighteen (18) years of age and have no legal guardian, parents/guardians may request that the school/District:

- Provide access so that the parent may examine the contents of their child(ren)'s email files;
- Terminate their child(ren)'s individual email account and/or Internet access; and
- Provide alternative activities for their child(ren) that do not require Internet access.

Parents/guardians wishing to challenge information accessed via the District's technology resources should refer to Policy 08.2322/Review of Instructional Materials and any related procedures.

The Superintendent/designee has the right to access information stored in any user directory, on the current user screen, or in electronic mail. S/he may review files and communications to maintain system integrity and insure that individuals are using the system responsibly. Users should not expect files stored on District servers or through District provided or sponsored technology services, to be private.

(Responsible Use of Technology – continued)

The Board recognizes that as telecommunications and other new technologies shift the ways that information may be accessed, communicated, and transferred by members of the society, those changes may also alter instruction and student learning. The Board generally supports access by students to rich information resources along with the development by staff of appropriate skills to analyze and evaluate such resources. In a free and democratic society, access to information is a fundamental right of citizenship.

Telecommunications, electronic information sources and networked services significantly alter the information landscape for schools by opening classrooms to a broader array of resources. In the past, instructional and library media materials could usually be screened—prior to use—by committees of educators and community members intent on subjecting all such materials to reasonable selection criteria. Board policy requires that all such materials be consistent with District-adopted guides, supporting and enriching the curriculum while taking into account the varied instructional needs, learning styles, abilities and developmental levels of the students. Telecommunications, because they may lead to any publicly available fileservers in the world, will open classrooms to electronic information resources, which have not been screened by educators for use by students of various ages.

Electronic information research skills are now fundamental to preparation of citizens and future employees during an Age of Information. The Board expects that staff will blend thoughtful use of such information throughout the curriculum and that the staff will provide guidance and instruction to students in the appropriate use of such resources. Staff will consult the guidelines for instructional materials contained in Board policy and will honor the goals for selection of instructional materials contained therein.

Students and staff are responsible for good behavior on school computer networks just as they are in a classroom or a school hallway. Communications on the network are often public in nature. General school rules for behavior and communications apply. The network is provided for students and staff to conduct research and communicate with others. Access to network services will be provided to students and staff who agree to act in a considerate and responsible manner.

CURRICULUM AND INSTRUCTION

Student and staff use of telecommunications and electronic information resources will be permitted upon submission of permission and/or agreement forms by staff, parents of minor students (under 18 years of age) and by students themselves. Regional networks require agreement by users to responsible use policies outlining standards for behavior and communication.

(Responsible Use of Technology – continued)

Access to telecommunications will enable students to explore thousands of libraries, databases, and bulletin boards while exchanging messages with people throughout the world. The Board believes that the benefits to students from access in the form of information resources and opportunities for collaboration exceed the disadvantages. But ultimately, parents and guardians of minors are responsible for setting and conveying the standards that their children should follow when using media and information sources. To that end, the Fort Thomas Independent Schools support and respect each family's right to decide whether or not to apply for access to information resources.

The Board authorizes the Superintendent to prepare appropriate procedures for implementing this policy and for reviewing and evaluating its effect on instruction and student achievement.

THE NETWORK:

The Fort Thomas Independent School District provides students and staff with a service called the Network. The Network is a computer service, which includes the use of computers, servers, software, Internet and e-mail. These procedures also address the use of stand-alone computers, peripherals, telephone usage and other instructional technology equipment.

In addition to providing students and staff with the understanding and skills needed to use technology resources and telephone services in an appropriate manner, the Fort Thomas Independent School District:

- Reserves the right to monitor all activity on the Network, Internet and e-mail.
- Reserves the right to monitor computer use or lack of use.
- Reserves the right to deny access to the Network, Internet and e-mail to any individual.
- Shall establish procedures that will maximize the Network system security.
- Shall supervise student and staff use of the Network, Internet, e-mail, and telephones.

The standards for student and staff access to the Fort Thomas Independent School District Network are:

(Responsible Use of Technology – continued)

Network access throughout the District is to be used for instruction, research, school administration and reasonable, non-work related communications. District access is not to be used for private business.

- Instructional staff will select and guide students on the appropriate use of Internet and instructional software on the Network.
- The District will be responsible for supervising network use. Auditing procedures are in place to monitor access to the network. However, the District cannot continually monitor every communication and network session for every student and staff member beyond the scope of supervision defined in the user agreement.
- Internet access and supervision from outside the District premises is the responsibility of the parents and guardians of students.
- Student users should not reveal their full name and personal information (address, phone number, financial information, social security number, etc.) or establish relationships with “strangers” on the network, unless instructional staff has coordinated the communication.
- Staff will not reveal a student’s full name or post a picture of the student or the student’s work on the Network with personally identifiable information unless the parent has given written consent.
- The content of any District web page is the responsibility of the sponsoring staff member who hosts the page.
- School-related clubs and organizations that wish to establish a web site must be a part of the school’s web account.

TELEPHONE USAGE:

- Telephone service is available primarily to provide two-way communications with school offices and for contact with parents.
- Staff will refrain from using telephones during instructional time.
- Students may use the telephones under staff supervision when there is a legitimate need such as calling parents to arrange transportation, delivery of medicine or clothes, or similar rare circumstances.
- Instruction time will not be interrupted to transfer calls except in emergencies.

All guidelines governing inappropriate language apply to telephone usage and procedures governing telephone usage also apply to District cellular phones and other wireless telecommunication systems.

(RESPONSIBLE USE OF TECHNOLOGY – CONTINUED)**COMPUTER USE GUIDELINES:**

When a student, teacher, or staff member at a Fort Thomas school accesses computers, computer systems, and computer networks owned or operated by the Fort Thomas Independent Schools, he or she assumes certain responsibilities and obligations. All access of this type is subject to school policies and to local, state, and federal laws. The school administration expects that student, faculty, and staff use of computers provided by the school will be ethical and will reflect academic honesty. Students, faculty and staff must demonstrate respect for intellectual property, ownership of data, system security mechanisms, and rights to privacy.

As a computer operator, you are expected to make appropriate use of computer resources provided by the Fort Thomas Independent Schools. You must:

- use computer resources only for authorized purposes following established procedures;
- be responsible for all activities on your assigned computer;
- access only files and data that are your own, which are publicly available, or to which you have been given authorized access;
- use only legal versions of copyrighted software;
- be considerate in your use of shared resources;
- abide by the Responsible Internet use policy.

Computer operators must not make inappropriate use of computer resources provided by the Fort Thomas Independent Schools. The following are nonexhaustive actions that are considered inappropriate:

- violating State and Federal legal requirements addressing student and employee rights to privacy, including unauthorized disclosure, use and dissemination of personal information;
- using another person's login name or password, "hacking" or gaining unauthorized access to computers or computer systems, or attempting to gain such unauthorized access;
- installing or using any unauthorized software or hardware on any District computer system or Network;
- using another person's files, system, or data without permission;
- using computer programs to decode passwords or to access control information;
- attempting to circumvent or subvert system security measures;
- engaging in any activity that might be harmful to systems or to any information stored thereon, such as creating viruses, damaging files, damaging systems, networks, school/District websites, or disrupting service;

(Responsible Use of Technology – continued)

- making or using illegal copies or copyrighted software, storing such copies on school systems, or sending them over networks;
- using mail service to harass or intimidate others;
- wasting computing resources, such as paper, by printing excessive copies or downloading of freeware or shareware programs;
- engaging in any activity that does not comply with the general principles listed at the beginning of this document;
- playing games across the network;
- violating the regulations of the Fort Thomas Independent Schools regarding appropriate use of the Internet.

The Fort Thomas Independent Schools considers any violation of appropriate use principles or guidelines to be a serious offense and reserves the right to copy and examine any files or information that may suggest that a person is using school computer systems inappropriately. Violators are subject to disciplinary action by school officials that may include loss of computer privileges and in- or out- of school suspension. Offenders may also be prosecuted under laws including, but not limited to, the Privacy Protection Act of 1974, the Computer Fraud and Abuse Act of 1986, the Computer Virus Eradication Act of 1989, and the Electronic Communications Privacy Act.

INTERNET ACCESS:

The Fort Thomas Independent Schools provide access to the Internet for all students, faculty, and staff that is obtained through Kentucky's Public Education Network. Students must have permission from at least one of their parents or guardians to access the Internet at school.

The use of an Internet account is a privilege, not a right, and inappropriate use will result in disciplinary action by school officials and/or cancellation of those privileges. A person's activities while using the Internet in any school must be in support of education and research, and consistent with the educational objectives of the Fort Thomas Independent Schools. In addition, anyone accessing the Internet from a school site is responsible for all on-line activities that take place through the use of his or her account. When using another organization's networks or computing resources, students must comply with the rules appropriate for that network.

The following is a nonexhaustive list of activities that constitute unacceptable use of the Internet, whether that use is initiated from school or any other site:

- using impolite, abusive, or otherwise objectionable language in either public or private messages, including profanity or obscenity;
- placing unlawful information on the Internet;
- using the Internet illegally in ways that violate federal, state, or local laws or statutes;

(Responsible Use of Technology – continued)

- using the Internet at school for non-school related activities;
- sending messages that are likely to result in the loss of the recipient’s work or systems;
- sending chain letters or pyramid schemes to lists or individuals, and any other types of use that would cause congestion of the Internet or otherwise interfere with the work of others;
- using the Internet for commercial purposes, financial gain or any illegal activity;
- using the Internet for political lobbying;
- changing any computer file that does not belong to the user;
- sending or receiving copyrighted materials without permission;
- knowingly giving one’s password to others;
- using Internet access for sending or retrieving pornographic material, inappropriate text files, or files dangerous to the integrity of the network;
- circumventing security measures on school or remote computers or networks;
- attempting to gain access to another’s resources, programs, or data;
- vandalizing, which is any malicious attempt to harm or destroy data or another user on the Internet, and includes the uploading or creation of computer viruses;
- falsifying one’s identity to others while using the Internet;
- changing any computer files that do not belong to the user;
- using technology resources to bully, threaten or attack a staff member or student or to access and/or set up unauthorized blogs and online journals, including, but not limited to MySpace.com, Facebook.com or Xanga.com.

STUDENT E-MAIL:

Fort Thomas Independent Schools is committed to providing educational opportunities to students that help extend its physical boundaries. In addition, the District is equipped to provide individual e-mail accounts for students. Therefore, students in grades 4-12 have the opportunity to receive a student e-mail account.

An e-mail account is offered to students in grades 4-12 who agree to act in a considerate and responsible manner and who agree to use the e-mail account for educational purposes. Students may not use e-mail accounts for personal use.

System administrators will monitor all outgoing and incoming e-mail traffic and deem what is inappropriate and appropriate use. The administration and staff may revoke or suspend student e-mail accounts when RUP terms are violated.

(RESPONSIBLE USE OF TECHNOLOGY – CONTINUED)**DISCIPLINARY ACTION FOR INAPPROPRIATE USE:**

- Student discipline for violation of any part of these procedures shall be based on the severity of the infraction.
- Student disciplinary action includes, but is not limited to, the loss of any or all computer privileges, termination of the user's account, removal from the class with a failing grade and/or suspension or expulsion. Privileges will be reinstated at the discretion of the District administrators.
- Discipline of staff may involve actions up to and including termination of employment.
- Parents, guardians and/or perpetrators may be billed for damages to technology resources.

Illegal/criminal activities will be referred to the appropriate law enforcement agency.

All students and staff are required to sign the Responsible Use Agreement Form. By signing the user agreement and/or parent permission form, the student or staff member has agreed to abide by Board policy governing access to technology resources.

NOTE: Staff should refer to Policy 08.2323 for guidance concerning use of District social networking technology tools for instructional, administrative and communication purposes.

RELATED PROCEDURE:

08.2323 AP.21

Use of Personal Cell Phones/Telecommunication Devices

Due to privacy concerns, and except for emergency situations, employees shall use discretion when using personally owned recording devices to create video or audio recordings or to take pictures while on duty or working with students except with prior permission from the Principal/designee.

For exceptions, see Board Policies **03.13214**.

Materials Used with Students

All materials presented for student use or viewing shall be reviewed by the teacher before use. Exceptions shall be current events programs and programs provided by Kentucky Educational Television.

Unless the Principal grants an exception based on documentation that the entire video is directly related to the content being taught, rather than showing an entire film, only clips of videos shall be used to highlight core content concepts. **08.234**

Copyrighted Materials

The use and duplication of copyrighted material for educational purposes shall be within the generally accepted uses delineated by applicable law and procedures developed by the Superintendent. In reference to copyrighted electronic materials, employees shall use such materials only in accordance with the license agreement under which the materials were purchased or otherwise procured. **08.2321**

Film/Videos

Use of copyrighted films and videos in the classroom shall have a direct link to one or more of the Kentucky Content areas or to a specific section of the Kentucky Program of Studies. Teachers shall reference such links in their lesson plans.

Appropriate licensing fees, as required by law, shall be paid by the school or by school-related groups that show copyrighted films and videos. **08.2321**

Health, Safety and Security

It is the intent of the Board to provide a safe and healthful working environment for all employees. Employees should report any security hazard or conditions they believe to be unsafe to their immediate supervisor.

In addition, employees are required to notify their supervisor immediately after sustaining a work-related injury or accident. A report should be made within 24-48 hours of the occurrence and prior to leaving the work premises, UNLESS the injury is a medical emergency, in which case the report can be filed following receipt of emergency medical care.

The District shall follow established timelines in policy when making oral reports to the Kentucky Labor Cabinet to report employee fatalities, amputations, hospitalizations, (including hospitalization resulting from a heart attack), or the loss of an eye.

File a Report	After Hours Hotline
(502)-564-3070	(800) 321-6742

For information on the District’s plans for Hazard Communication, Bloodborne Pathogen Control, Lockout/Tagout, Personal Protective Equipment (PPE), and Asbestos Management, contact your immediate supervisor or see the District’s *Policy Manual* and related procedures.

In order to eliminate or minimize occupational exposure to bloodborne pathogens, employees must comply with the District’s Bloodborne Pathogen Control Plan. When bodily fluid spills occur, employees shall follow procedures posted in each school building or worksite. Disposable gloves and plastic bags are available in elementary classrooms and, in each school, the Principal's office, food service office, or the custodian's storage area.

(Health, Safety and Security – continued)

For additional information on the District’s Hazard Communication Plan and Bloodborne Pathogen Control Plan, contact your immediate supervisor or see the District’s *Policy Manual* and related procedures.

Employees should use their school/worksite two-way communication system to notify the Principal, supervisor or other administrator of an existing emergency. **03.14/05.4**

Automated External Defibrillators (AEDs)

The District shall maintain AEDs in designated locations throughout the District. An AED shall be used in emergency situations warranting its use in accordance with procedures established by the Superintendent/designee. Expected users documented as having completed required training shall be authorized to use a defibrillator. 05.4

Assaults and Threats of Violence

Employees should immediately report any threats they receive (oral, written or electronic) to their immediate supervisor. A “threat” shall refer to a communication made by any means, including, but not limited to, electronic and/or online methods.

Under provisions of state law (KRS 158.150) and regulation (702 KAR 5:080), school personnel may remove threatening or violent students from a classroom or from the District’s transportation system pending further disciplinary action. However, before the need arises, employees should familiarize themselves with policy and procedures that are required. **09.425**

Search and Seizure

All searches of students must be conducted in compliance with Board Policy 09.436.

Administrative searches of school property jointly held by the school and the student, such as lockers, desks, and network systems, technology resources and accounts owned or supplied by the District, are permissible and shall be conducted at the direction of the Principal for the purpose of enforcing school policies and rules ensuring health, safety or educational order.

Unless otherwise permitted by policy 09.436, only those certified personnel directly responsible for the conduct of the pupil or the Principal of the school the student attends are authorized to search the student’s person or his or her personal effects. Before a student’s outer clothing, pockets, or personal effects (e.g., handbags, backpacks, etc.) are searched, there must be reasonable grounds to believe the search will reveal evidence that the student has violated or is violating either a school rule or the law or possesses an item harmful to the school and its students. Search of a pupil's person shall be conducted only with the express authority of the Principal.

Unless otherwise permitted by policy 09.436, no search of a pupil shall be conducted in the presence of other students. No strip searches of students shall be permitted. **09.436**

Child Abuse

Any school personnel who knows or has reasonable cause to believe that a child under eighteen (18) is dependent, abused or neglected, a victim of human trafficking, molested, or is a victim of female genital mutilation, in or out of school, shall **immediately** make an oral report to a local law enforcement agency, the Cabinet for Health and Family Services or its designated representative, the Commonwealth’s or County Attorney, and to the Principal (who shall also make a report to the proper authorities) and Superintendent.

After making that oral report, the employee shall then immediately notify the Principal of the suspected abuse. If the Principal is suspected of child abuse, the employee shall notify the Superintendent/designee.

Upon notification, the Principal or the Superintendent/designee shall facilitate the cooperation of the school with the investigation of the report. Any person who knowingly causes intimidation, retaliation, or obstruction in the investigation of the report shall be guilty of a Class A misdemeanor.

All current school administrators, certified personnel, office staff, instructional assistants, coaches, and extracurricular sponsors shall complete Board selected training on child abuse and neglect prevention, recognition, and reporting by January 31, 2017, and every two (2) years thereafter. School administrators, certified personnel, office staff, instructional assistants, coaches, and extracurricular sponsors hired after January 31, 2017, shall complete the training within ninety (90) days of being hired, and every two (2) years thereafter. **09.227**

Reporting telephone numbers:

Social Services	292-6550 292-6733
Fort Thomas Police	441-6562
State Police	428-1212
County Attorney	581-8015

Corporal Punishment

Employees shall not utilize corporal punishment as a penalty or punishment for student misbehavior. Corporal punishment shall refer to the deliberate infliction of physical pain on a student by any means. **09.433**

Use of Physical Restraint and Seclusion

Use of physical restraint and seclusion shall be in accordance with Board policy and procedure. **09.2212**

Civility

Employees should be polite and helpful while interacting with parents, visitors and members of the public. Individuals who come onto District property or contact employees on school business are expected to behave accordingly. Employees who fail to observe appropriate standards of behavior are subject to disciplinary measures, including dismissal.

In cases involving physical attack of an employee or immediate threat of harm, employees should take immediate action to protect themselves and others. In the absence of an immediate threat, employees should attempt to calmly and politely inform the individual of the provisions of Policy **10.21** or provide him/her with a copy. If the individual continues to be discourteous, the employee may respond as needed, including, but not limited to: hanging up on the caller; ending a meeting; asking the individual to leave the school; calling the site administrator/ designee for assistance; and/or calling the police.

As soon as possible after any such incident, employees should submit a written incident report to their immediate supervisor.

Complaints/Communications

The Superintendent/designee has developed specific procedures to assist employees in filing a complaint. For full information refer to Policy **03.16** and related procedures.

Complaints are individual in nature and must be brought by the individual employee. The Board shall not hear complaints concerning simple disagreement or dissatisfaction with a personnel action.

Gifts

No employee shall accept, for personal use, any gifts from current or potential suppliers or vendors. Personnel are also prohibited from accepting rebates in the form of gifts or gratuities from organizations or persons to whom they have referred or may refer parents and students. Exceptions may be made for those businesses that offer discounts to various employee groups.

Donations of technology to the District must comply with provisions of policy. **03.1322**

Solicitations

District employees shall not use the advantage of their position for personal gain through soliciting school patrons, pupils or fellow employees.

No school employee shall provide to any outside group or individual a list of parents, students, teachers or other employees for solicitation or other purposes without the prior approval of the Board or the Superintendent. **03.1323**

Advertising in the Schools

No advertising shall be allowed in the facilities or on the grounds of school property, except as expressly approved by the Board. However, this requirement does not prevent advertising in publications which are published by student organizations, PTA/PTO, booster club, or other parent groups.

Principals shall determine whether nonschool-related advertising materials are to be sent home with students, using the following standards:

1. Activities advertised for non-profit, civic, and charitable organizations must primarily support student or general community interests, rather than a special or “for profit” interest of a sponsoring nonschool group. For example:
 - a. Materials from not-for-profit groups that are not school-related, but are providing athletic and/or recreational opportunities for students shall be considered.
 - b. Materials from not-for-profit organizations that are not school-related, but are dedicated to providing services to children shall be considered.
2. Students shall not be used to carry home materials that are strictly commercial in nature.
3. Materials sent home with students shall not advertise or promote a particular political party or the candidacy of an individual for public office.

Salesmen, representatives, or agents shall not solicit or contact pupils, teachers, or other employees in the school during the school day without notice to and express prior approval of the Principal. **10.4**

Outside Employment or Activities

Employees may not perform any duties related to an outside job during their regular working hours. **03.1331**

Required Reports

Although you may be directed to make additional reports, the following reports are required by law and/or Board policy:

- Within seventy-two (72) hours of the discovery or notification of a security breach, the District shall notify the Commissioner of the Kentucky State Police, the Auditor of Public Accounts, the Attorney General, and the Education Commissioner. **01.61**
- An employee shall report to the Superintendent if the employee has been found by the Cabinet for Health and Family Services to have abused or neglected a child, and if the employee has waived the right to appeal such a substantiated finding or the finding has been upheld upon appeal. **03.11**
- Report to the immediate supervisor damaged, lost, stolen, or vandalized school property if District property has been used for unauthorized purposes. **03.1321**

(Required Reports – continued)

- If you know or believe that the District’s alcohol-free/drug-free policies have been violated, promptly make a report to the local police department, sheriff, or Kentucky State Police. This is required if you know or have reasonable cause to believe that conduct has occurred which constitutes the use, possession, or sale of controlled substances on the school premises or within one thousand (1,000) feet of school premises, on a school bus, or at a school sponsored or sanctioned event. **03.13251/09.423**
- Upon the request of a victim, school personnel shall report an act of domestic violence and abuse or dating violence and abuse to a law enforcement officer. School personnel shall discuss the report with the victim prior to contacting a law enforcement officer.

School personnel shall report to a law enforcement officer when s/he has a belief that the death of a victim with whom s/he has had a professional interaction is related to domestic violence and abuse or dating violence and abuse. **03.13253/09.425**
- Report potential safety or security hazards to the Principal and notify your supervisor immediately after sustaining a work-related injury or accident. **03.14/05.4**
- Report to the Principal/immediate supervisor or the District’s Title IX Coordinator if you, another employee, a student, or a visitor to the school or District is being or has been subjected to harassment or discrimination. **03.162/09.42811**
- Employees who believe or have been made aware that they or any other employee, student, or visitor has been subject to Title IX Sexual Harassment shall report it to the TIXC. Failure to make such a report shall be grounds for discipline up to and including termination. If the knowledge of the reporting party gives rise to reasonable cause to believe that the reported conduct constitutes child abuse Policy 09.227 or a reportable criminal offense Policy 09.221, notification of state officials shall be made as required by law. **03.1621/09.428111**
- If you suspect that financial fraud, impropriety or irregularity has occurred, immediately report those suspicions to Principal or the Superintendent. If the Superintendent is the alleged party, employees should address the complaint to the Board chairperson. **04.41**
- Report to the Principal any student who is missing during or after a fire/tornado/bomb threat drill or evacuation. **05.41 AP.1/05.42 AP.1/05.43 AP.1**
- When notified of a bomb threat, scan the area noting any items that appear to be out of place, and report same to Principal/designee. **05.43 AP.1**
- If you know or believe that the District’s weapon policy has been violated, promptly make a report to the local police department, sheriff, or Kentucky State Police. This is required when you know or have reasonable cause to believe that conduct has occurred which constitutes the carrying, possession, or use of a deadly weapon on the school premises or within one thousand (1,000) feet of school premises, on a school bus, or at a school sponsored or sanctioned event. **05.48**

(Required Reports – continued)

- District bus drivers taking medication either by prescription or without prescription shall report to their immediate supervisor and shall not drive if that medication may affect the driver's ability to safely drive a school bus or perform other driver responsibilities. **06.221**
- District employees who know or have reasonable cause to believe that a student has been the victim of a violation of any felony offense specified in KRS Chapter 508 (assault and related offenses) committed by another student while on school premises, on school-sponsored transportation, or at a school-sponsored event shall immediately cause an oral or written report to be made to the Principal of the school attended by the victim.
- The Principal shall notify the parents, legal guardians, or other persons exercising custodial control or supervision of the student when the student is involved in such an incident.
- Within forty-eight (48) hours of the original report of the incident, the Principal also shall file with the Board and the local law enforcement agency or the Department of Kentucky State Police or the County Attorney a written report containing the statutorily required information. **09.2211**
- If you have been authorized to use such measures, notify the Principal as soon as possible when you use seclusion or physical restraint with a student, but no later than the end of the school day on which it occurs, and document in writing the incident by the end of the next school day. **09.2212**
- If you know or have reasonable cause to believe that a child under eighteen (18) is dependent, abused or neglected, or a victim of human trafficking, or is a victim of female genital mutilation, you shall **immediately** make an oral report to a local law enforcement agency or Kentucky State Police, the Cabinet for Health and Family Services or its designated representative, the Commonwealth's or County Attorney and then make a report to the Principal. (See **Child Abuse** section.) **09.227**
- District employees shall report to the Principal or to their immediate supervisor those situations that threaten, harass, or endanger the safety of students, other staff members, or visitors to the school or District. Such instances shall include, but are not limited to, bullying or hazing of students and harassment/discrimination of staff, students or visitors by any party. In serious instances of peer-to-peer bullying/hazing/harassment, employees must report to the alleged victim's Principal, as directed by Board Policy **09.42811**.

In certain cases, employees must do the following:

1. Report bullying and hazing to appropriate law enforcement authorities as required by policy **09.2211**; and
 2. Investigate and complete documentation as required by policy **09.42811** covering federally protected areas. **09.422**
- Report to the Principal any threats you receive (oral, written or electronic). **09.425**

Code of Ethics for Teachers

16 KAR 1:020:

Section 1. Certified personnel in the Commonwealth:

- (1) Shall strive toward excellence, recognize the importance of the pursuit of truth, nurture democratic citizenship, and safeguard the freedom to learn and to teach;
- (2) Shall believe in the worth and dignity of each human being and in educational opportunities for all;
- (3) Shall strive to uphold the responsibilities of the education profession, including the following obligations to students, to parents, and to the education profession:
 - (a) To students:
 1. Shall provide students with professional education services in a nondiscriminatory manner and in consonance with accepted best practice known to the educator;
 2. Shall respect the constitutional rights of all students;
 3. Shall take reasonable measures to protect the health, safety, and emotional well-being of students;
 4. Shall not use professional relationships or authority with students for personal advantage;
 5. Shall keep in confidence information about students which has been obtained in the course of professional service, unless disclosure serves professional purposes or is required by law;
 6. Shall not knowingly make false or malicious statements about students or colleagues;
 7. Shall refrain from subjecting students to embarrassment or disparagement; and
 8. Shall not engage in any sexually related behavior with a student with or without consent, but shall maintain a professional approach with students.

Sexually related behavior shall include such behaviors as sexual jokes; sexual remarks; sexual kidding or teasing; sexual innuendo; pressure for dates or sexual favors; inappropriate physical touching, kissing, or grabbing; rape; threats of physical harm; and sexual assault.

(b) To parents:

1. Shall make reasonable effort to communicate to parents information which should be revealed in the interest of the student;
2. Shall endeavor to understand community cultures and diverse home environments of students;
3. Shall not knowingly distort or misrepresent facts concerning educational issues;
4. Shall distinguish between personal views and the views of the employing educational agency;
5. Shall not interfere in the exercise of political and citizenship rights and responsibilities of others;

(Code of Ethics for Teachers – continued)

6. Shall not use institutional privileges for private gain, for the promotion of political candidates, or for partisan political activities; and
 7. Shall not accept gratuities, gifts, or favors that might impair or appear to impair professional judgement, and shall not offer any of these to obtain special advantage.
- (c) To the education profession;
1. Shall exemplify behaviors which maintain the dignity and integrity of the profession;
 2. Shall accord just and equitable treatment to all members of the profession in the exercise of their professional rights and responsibilities;
 3. Shall keep in confidence information acquired about colleagues in the course of employment, unless disclosure serves professional purposes or is required by law;
 4. Shall not use coercive means or give special treatment in order to influence professional decisions;
 5. Shall apply for, accept, offer, or assign a position or responsibility only on the basis of professional preparation and legal qualifications; and
 6. Shall not knowingly falsify or misrepresent records of facts relating to the educator's own qualifications or those of other professionals.

Section 2. Violation of this administrative regulation may result in cause to initiate proceedings for revocation or suspension of Kentucky certification as provided in KRS 161.120 and 704 KAR 20:585.

Dress and Appearance Memo from Superintendent

August, 2005

Fort Thomas Independent School District Employees:

An individual recently shared a memo to employees of a major local company which addresses the issue of appropriate dress. The memo handles that sensitive and important issue in a positive way. Appropriate dress has been a topic of discussion within the district for the last several years. Since we like the message given to those employees, we decided to share that message and the related Q & A with you, after making appropriate modifications to fit the school environment. That message is presented below.

This communication provides guidelines for appropriate attire for classrooms and school related travel. The Fort Thomas Independent Schools expectation is that we show respect for others, and reflect a professional image. This means dressing in a way that does not offend others or cause undue distraction.

We are addressing this topic in a principle-based manner, trusting employees to do the right thing as it relates to their attire and the business they conduct each day. The responsibility for appropriate attire lies with each of us; it is important to realize the impact it can have on our interaction with our students, parents, and peers.

Attached are Questions & Answers to provide additional information. I encourage you to discuss this with your principal or supervisor for clarification.

The Fort Thomas Independent School District values and embraces differences, and we want to maintain a work environment that enables people to achieve high expectations, standards and goals. Let's use this opportunity to bring our principles to life.

QUESTIONS & ANSWERS

Q. What does "appropriate" mean?

A. We have chosen "business appropriate" as the preferred way of describing the dress standard. This acknowledges that the work you do should guide your choice of dress rather than having a formal dress code. Some individuals have incorrectly interpreted business appropriate as casual dress. (For example, wearing weekend attire to work.)

Q. How do I know what is appropriate dress if there are no specific guidelines?

A. We have not created an all-inclusive list of appropriate attire. Instead, we rely on employees to use common sense to wear what is appropriate for the type of work that they do. While jeans, tee shirts, shorts, mini-skirts, clothes that expose mid-sections, sweat suits, spandex (or other tight fitting clothing), flip flops, and tennis shoes are certainly responsible weekend casual wear, they do not convey a professional image and would not be appropriate to wear in most school situations.

Q. Who decides whether my dress is appropriate? How is it reinforced?

A. We expect employees to dress in a way that reflects a professional image, shows respect for others and is appropriate for the business they will do that day. So, as long as those principles are met, each individual will decide what appropriately meets those criteria. Most Fort Thomas Independent School District employees have a good sense of what is and is not appropriate for the work they do.

In rare situations when the principles are not adhered to or are in question, each employee's principal or supervisor is expected to address the inappropriate attire, just as he/she would any other type of inappropriate conduct. Since dress always involves a subjective element, principals and supervisors should use common sense in handling dress standard issues and talk things out in a professional, constructive way.

Q. Will it be seen as a performance issue if I wear clothes that are too casual (something I thought was appropriate, but my principal or supervisor does not)?

A. Use your best judgment on what to wear to convey a professional image. If there is an issue, your principal or supervisor should deal with it quickly, honestly and openly to help clarify what appropriate attire might look like for the work you do. This should not be seen as a long-term performance issue unless it happens repeatedly despite getting advice and counsel.

Q. Are there exceptions to the guidelines? Is casual attire ever appropriate?

A. There are a few exceptions, such as certain field trips. The appropriate attire for some teachers, such as P.E. teachers, will be more casual due to the nature of their jobs. Teachers of our very young may feel appropriate wearing casual slacks when they plan to be sitting on the floor with their student.

F O R T T H O M A S

I N D E P E N D E N T S C H O O L S

2023-2024
Code of Conduct

Approved June 12, 2023

Brian Robinson, Superintendent
Keith Faust, Assistant Superintendent for Teaching and Learning
Jamee Flaherty, Assistant Superintendent of Student Services

Ann Meyer, Chairperson
Julie Kuhnhein
Jeff Beach
Clem Fennell
Sarah Foster

Our district has a long-standing tradition of high expectations for both academic performance and student/staff conduct. This Code contains important information regarding the role of individuals in the school district. Everyone shares a tremendous personal responsibility to help maintain our schools as safe and orderly learning environments. Only by working together will we have a school district where students grow and learn without threat of harm. Please discuss this Code with the child(ren) in your family and emphasize the important role students must play in school safety. The schools require the effort of the entire community. Thank you for your support of this Code and for helping us provide our students and staff with a safe, orderly, and equitable learning environment.

This Code of Acceptable Behavior and Discipline is to be kept on file in the Superintendent's office along with other documents pertaining to the operation of Fort Thomas Independent Schools. These include Board Policy and Procedures, District Emergency Management Plan, Kentucky Revised Statutes and Administrative Regulations, District Special Education Policies and Procedures, School Council Policies, School Handbooks, and all other pertinent student records information that may be applicable.

Revision to this code may be necessary after its distribution to comply with newly revised statutes and regulations and case law. A complete copy of the Board Policy and Procedure Manual is available for inspection at each Principal's office or at the Central Office. The policies and procedures can also be found on the district web page. Go to the Board of Education tab for the link.

CONTENTS

Mission and Vision	4
Statement of Nondiscrimination	4
Rights and Responsibilities/Required Standards	5
Consequences of Violations	7
Search and Seizure	7
Student Records	8
Reports to Law Enforcement Officials	8
Suspension, Expulsion and Due Process	8
Grievances	9
Attendance Policy	9
Discipline Code	11
Rights and Responsibilities	11
Abuse of Teacher Prohibited	13
Bullying/Hazing	14
Search and Seizure	14
Harassment/Discrimination	14
Complaint Procedure	15
Corporal Punishment	15
Chronically Disruptive/Removal of Students	15
Threats Made by Students	16
Weapons	16
Retaliation Prohibited	16
Disciplinary Responses to Student Misconduct	17
Electronic Media/Responsible Use Policy	25
Telecommunications	28
Special Policies	28

Mission Statement

Rich in tradition and committed to the future, the Fort Thomas Independent School District provides engaging and challenging learning experiences which foster creativity, curiosity, and innovation, while inspiring all students to pursue lifelong learning and become productive members of the global community.

Vision Statements

- ❖ **Our students** are engaged in a variety of experiences that foster creativity and curiosity, demonstrating the skills and dispositions needed to solve real-world problems and to become caring and productive members of the global community.
- ❖ **Our teachers** exhibit a student-centered passion for teaching and a deep understanding of content, utilizing research-based strategies to challenge and meet the needs of all learners.
- ❖ **Our leadership** maintains high expectations, works collaboratively with all stakeholders, focuses on a shared mission, and demonstrates a commitment to individual student growth and achievement.
- ❖ **Our parents** are encouraged to be active participants in their child's education, investing in a partnership of mutual respect.
- ❖ **Our community**, as a valued partner, reciprocates our desire to develop a highly-skilled workforce that demonstrates civic pride, global citizenship, and service to others.
- ❖ **Our instruction** focuses on individual student growth toward mastery of college and career readiness standards and instills a passion for lifelong learning.
- ❖ **Our technology** is utilized by teachers and students in transformative ways to enhance student achievement and to make real-world global connections.
- ❖ **Our culture/climate** is welcoming and allows all stakeholders to feel safe, encouraged, nurtured, and challenged to achieve at high levels.

***Fort Thomas Independent Schools
Rich in Tradition, Committed to the Future***

STATEMENT OF NONDISCRIMINATION

The Board of Education does not discriminate on the basis of age, color, disability, parental status, marital status, race, national origin, religion, sex, or veteran status in the programs, activities and services it provides, as required by law. Individuals who have questions concerning compliance with this requirement should contact the Superintendent at the Board of Education's Central Office.

RIGHTS AND RESPONSIBILITIES

As citizens of the United States of America, students may participate in activities that do not (1) materially or substantially disrupt the education process, (2) present a clear and present danger to the health and safety of self, others or property, or (3) infringe on the rights of others.

Specifically, students have the right to:

- An orderly educational atmosphere conducive to learning
- Personal safety and security while at school and school sponsored activities
- Academic grades based on academic performance, not on conduct

Students have the responsibility to:

- Comply with district, school and classroom rules and follow directions given by teachers and other school personnel
- Immediately report student threats to harm others to a teacher, counselor or school administrator
- Give their best effort to tasks assigned by their teacher, coach or other person who works with them

REQUIRED STANDARDS

The Board expects employees, students, parents, guardians and others associated with the schools to apply the following standards in a reasonable and fair manner:

- To promote the full implementation of conduct standards and maximize safety in the school environment
- To make supervision of all students at all school activities a top priority among their assigned duties
- To understand that the younger the child, the greater the need for adult guidance and protection
- To provide a professionally planned and positive school environment where academic progress and a safe environment are paramount
- To communicate that all students are expected to do their part to maintain the orderly operation of each school and every school activity.

To clearly communicate and demand that all students refrain from all behaviors that interfere with the safe and orderly operation of the schools and all school activities. These behaviors include but are not limited to:

- Harassment of, or discrimination against, other students on the basis of race, color, national origin, age, religion, mental status, political beliefs, sex or disability
- Insubordination (disobedient or defiant behavior)
- Sale of items without prior approval of the Superintendent or Principal
- Wearing apparel, accessories or hairstyles that disrupt the educational process or threaten the health or safety of self or the health and safety of others
- Possession of prohibited items, such as paging devices, laser lights, weapons, illegal drugs or drug paraphernalia, tobacco, cigarette lighters or matches, fireworks or any other items that threaten the safety or orderly operation of the school or school activities

To understand that regular and punctual attendance at school is both a privilege and a responsibility of the student. Good attendance is necessary for satisfactory progress and high academic achievement.

Examples of attendance violations include but are not limited to:

- Absence from school without valid excuse
- Tardy without valid excuse

To exercise self-control as required by the particular situation and in keeping with school and district rules, or be subject to removal from the regular classroom setting or transportation system. In addition, a student may be barred from participation in extracurricular activities, pending investigation that he/she has violated the District's behavior standards or the school council's criteria for such participation.

To understand that certain behaviors are not only violations of school polices, but also may be illegal and may carry other penalties prescribe by criminal and civil law. Such behaviors include but are not limited to:

- Fighting and physical attacks
- Possession of a weapon
- Threats by verbal or written statements or gestures with intent to harm or demean others
- Use of alcohol or prohibited drugs
- Use of prohibited tobacco product
- Physically assaulted, battered or abused educational personnel or other students **off school property** and the incident is likely to substantially disrupt the educational process.

To understand school property belongs to the community and the state. It must be protected and preserved for educational and community use. Therefore, students shall respect school property and the property of others. Examples of prohibited behaviors include, but are not limited to:

- Theft of school property or personal property of employees or other students
- Abuse of school property or personal property to include intentional or careless damage or destruction
- Extortion of money or property.
- Prohibited use of electronic media and other District technological resources
- Littering

To understand that students must work cooperatively and productively with each other and with school personnel in a manner that is consistent with standards of respect and courtesy. Examples of prohibited behaviors that detract from a safe and orderly learning environment include, but are not limited to:

- Making abusive and harassing statements regarding one's race, gender, disability, religion or nationality
- Use of profane or vulgar language
- Lying
- Cheating
- Ignoring or breaking rules and procedures established to maintain order
- Behaving in a manner disrespectful of others

CONSEQUENCES OF VIOLATIONS

Behavioral violations of a minor nature should be handled by the classroom teacher, who may choose from a variety of response options to include, but not be limited to:

- Verbal warning
- Notification of parents
- Loss of privileges
- Teacher-student conference
- Behavior contract
- Detention
- Referral for support services
- Alternative assignment
- Detention
- Other strategies established by School Council Policy

For repeated or more serious violations, administrators may also use these options:

- Suspension (up to 10 days)
- Petition to Juvenile Court
- Referral to court-designated worker
- Placement in an alternative setting
- Expulsion
- Referral to Law Enforcement

State and federal law requires special consideration when dealing with behavior and disciplinary issues involving students with disabilities.

SEARCH AND SEIZURE

Students have the right to be secure from unreasonable searches of their person and property. However, school authorities are authorized to search a student if they have reasonable suspicion that the search will reveal evidence that the student has violated or is violating this Code or a school rule or the law. In addition, school authorities may conduct general inspections of jointly held property on a regular basis. All searches will be conducted in accordance with Board policy. Students cannot expect to have complete privacy in their use of school property assigned for their use, such as desks and lockers.

STUDENT RECORDS

Records containing student information shall be made available to the parent of the student/guardian, or eligible student on written request. Eligible students include those 18 years of age or older or those enrolled in a postsecondary school program. For information concerning access or corrections to student records, contact the Principal or the Superintendent at the Central Office.

REPORTS TO LAW ENFORCEMENT OFFICIALS

When principals have reasonable belief that certain violations have taken place, they are required by law to immediately report them to law enforcement officials. Violations on school property or at a school-sponsored function requiring a report to law enforcement officials include:

- Assault resulting in serious physical injury
- A sexual offense
- Kidnapping
- Assault involving the use of a weapon
- Possession of a firearm in violation of the law
- Possession of a controlled substance in violation of the law; or
- Serious damage to school property

SUSPENSION, EXPULSION, & DUE PROCESS

For certain violations, the Superintendent and Principal may remove (suspend) a student from school for up to ten (10) days per incident. Unless immediate suspension is necessary to protect persons or property or to avoid disruption of the educational process, the student shall not be suspended until he/she has been given due process (required by law). Due process must be given before educational benefits are taken away and shall include:

1. Oral or written notice of the charge(s) against the student.
2. An explanation of the evidence, if the student denies the charge(s).
3. An opportunity to present the student's own version of the facts concerning the charge(s).

A report of the suspension shall be made in writing to the Superintendent/designee and to the parent/guardian of the student being suspended. Suspension of a primary school student shall be considered only in exceptional cases where there are safety issues for the child or others.

Following legally required due process, the Board may expel any pupil from the regular school setting for misconduct as defined by law for periods longer than ten (10) days. In cases of expulsion, provision of educational services will be required unless the Board determines, on the record and supported by clear and convincing evidence, that the expelled student poses a threat to the safety of other students or school staff and cannot be placed in a state-funded agency program. Action to expel a pupil shall not be taken until the parent of the pupil has had an opportunity for a hearing before the Board.

The Board of Education shall expel for a period **of at least twelve (12) months** any student who:

1. Is determined by the Board of Education through clear and convincing evidence to have made threats that pose a danger to the well-being of students, faculty, or staff of the district; OR
2. Is determined by the Board of Education to have brought a weapon, as defined by KRS 527.070, to a school under its jurisdiction.

In lieu of expelling a student or upon the expiration of a student's expulsion by the Board, the superintendent may place a student into an alternative program or setting if the superintendent determines that placement of the student in the regular school setting is likely to substantially disrupt the education process or constitutes a threat to the safety of other students or school staff. A parent or guardian shall have the opportunity for a hearing before the Board prior to this action being taken.

Per KRS 158.150 the Board of Education may expel or extend the expulsion of any student for any misconduct, including, but not limited to, willful disobedience or defiance of the authority of the teachers or administrators, use of profanity or vulgarity, assault or battery or abuse of other students, threats of force or violence, use or possession of alcohol or drugs, stealing or destruction or defacing of school property or personal property of students or school personnel, the carrying or use of weapons or dangerous instruments, assault or battery or abuse of school personnel. This includes conduct on school property, off school property, or at school-sponsored events or activities.

GRIEVANCES

Students and parents wishing to express an educational concern or grievance shall observe the following order of appeal:

1. Teacher
2. Principal
3. School council (where appropriate)
4. Superintendent
5. Board

Information on filing a formal complaint or grievance is available at each school and at the Central Office.

FORT THOMAS INDEPENDENT SCHOOL DISTRICT ATTENDANCE POLICY

Regular and prompt attendance is essential for your child's educational growth and learning life-long work habits. A student cannot get full benefit from instruction if attendance is irregular.

ABSENCE

An absence shall be defined as a student who is not present and accounted for during a day when school is in session. **All students returning from an absence must bring a written note to their homeroom teacher indicating the reason for the absence.**

DEFINITIONS OF ABSENCES AND TARDINESS (Time Intervals)

School will begin promptly at 8:00 AM (HHS/HMS) and 8:15 (JES/MES/WES) each day. Students arriving after this time will be considered tardy. Any student who misses more than sixty (60) minutes of the instructional day either by checking in late or by signing out of school early without the proper school approved excuse will be in violation of local board policy 09.123 and KRS 159.150. Students or parents, who allow their children to be excessively absent or tardy without a valid excuse, may be subject to both academic and legal penalties.

EXCUSED ABSENCES

1. Death or severe illness in the pupil's immediate family,
2. Illness of the pupil,*
3. Religious holidays and practices, (prior approval of Principal or designee required),
4. Medical and dental appointments which cannot be scheduled outside regular school hours,
5. College visitations by seniors, as approved in advance by the Principal,
6. One (1) day for attendance at the Kentucky State Fair,
7. Documented military leave,
8. One (1) day prior to departure of parent/guardian called to active military duty,

9. One (1) day upon the return of parent/guardian from active military duty,
10. Visitation for up to ten (10) days with the student's parent, de facto custodian, or person with legal custody who, while on active military duty stationed outside of the country, is granted rest and recuperation leave,
11. Ten (10) days for students attending basic training required by a branch of the United States Armed Forces, or
12. Other valid reasons as determined by the Principal or designee, including trips qualifying as educational enhancement opportunities.

Students shall be granted an excused absence for up to ten (10) school days to pursue an educational enhancement opportunity determined by the Principal to be of significant educational value.

All other absences are unexcused and the work may not be made up, unless permitted by the principal as outlined in Policy 09.123. Absences before and after a school holiday are unexcused.

A student who is absent is required to bring a written and dated excuse upon his/her return to school. The student's parent(s) or guardian(s) must sign the statement. After a total of ten (10) days of absence due to illness, students are required to present a written statement from a physician for each additional absence for the school year in order to be excused.

EXAMPLES OF UNEXCUSED ABSENCES

Absences will be considered unexcused when:

- The absence is not accompanied by a note from a parent-guardian or physician and/or submitted with ten (10) days.
- The absence is a result of suspension by the school. The student is still required to obtain an admittance slip upon return to school after the suspension period has been served.
- The absence is on a day immediately preceding or following a holiday, vacation period, or professional day, unless a signed statement by a physician, parent or guardian indicates that student was ill.

LOCAL BOARD POLICY: 09.123

Students who have been suspended shall not be allowed to make up daily work, tests or quizzes, unless, as determined by the Principal/designee, they are permitted to complete it either during or through Saturday detention(s). Each school shall set standards for determining when students will be permitted to attend Saturday detention to make up work.

Students who have been suspended may make up end of grading period or semester exams at a later date as arranged by the Principal or assistant Principal. Any long-term project due on a date during the suspension shall be accepted on the first day back to school for less than full credit.

Written documentation stating the reason for the absence will need to be presented in order to make arrangements for the work to be made up.

TRUANCY

Students who are excessively absent or tardy without valid excuse may be subject to both academic and legal penalties:

KRS 159.150 states that any student who has been absent from school without valid excuse for three (3) or more days, or tardy without valid excuse for three (3) or more days during a one (1) year period is declared a truant.

The Director of Pupil Personnel (DPP) may cite a parent to the Court Designated Worker (CDW) under this statute for failure to send a child to school. Any child who has been reported as truant two (2) or more times during a one (1) year period is declared a habitual truant. Habitual truants will be cited by the DPP to appear before the CDW to answer the charge of failure to send a child to school. An assessment will be done by the CDW to determine if court action should follow. Parents may be fined for failing to send their child to school in either case as the law makes no differentiation between penalties for truants and habitual truants. (KRS 600.020)

CHECK-OUT POLICY

Students who must leave before the end of the school day must be checked out through the office as part of the safety policy. A parent/guardian or designee must come to the school to check the student out or make arrangements with the principal/designee as determined by school procedures. Upon returning to school, the student must check-in at the office before returning to classes. The student will be counted tardy if he/she misses from 1 minute to 60 minutes of instructional time, even if the student is checked out in the afternoon.

SCHOOL CLOSING

In the event of severely inclement weather or an emergency, school may be closed or the starting time delayed. The same conditions may also necessitate early dismissal. School closing, delayed starting time or early dismissal will be announced through a call on the district's phone messaging system, posted on the district webpage, and published through the media. School closing or snow schedules will be announced. If no announcement is made, it can be assumed that school will be in regular session. Please do not call the schools. Telephone lines must be kept open for emergencies.

DISCIPLINE CODE OF CONDUCT

RIGHTS AND RESPONSIBILITIES

Rights and Responsibilities of Students, Parents and Educators

Under the United States Constitution, certain individual rights are provided for the protection of all people. In any relationship, individual responsibilities are inherent in all rights. The following, therefore, is set down as the code of rights and responsibilities.

Student Rights and Responsibilities

Students have a right to:

- An appropriate public education that will prepare them, within the limits of their abilities, to reach maximum potential for contributing to their own welfare and that of society.
- Receive academic evaluation based solely on their academic performance.
- Make up work after returning from an excused absence.
- Be represented by students in the decision making process on matters which relate to standards of achievement, conduct, elections, and participation where system-wide committees are appointed to address these matters.
- Reasonable and timely notice of all rules, regulations, policies and penalties to which they may be subject.
- Request a conference, present complaints, or file grievances of disciplinary action or the matters in a reasonable length of time.
- Freedom of speech and expression.
- Protection of person and property.
- The respect of other students and school personnel.

- Participate in any school-related program and activity, within the limits of their capabilities, without regard to race, creed or sex.
- Confidentiality of all their personal school records.
- Integrity in relationship to spoken words or written assignments.
- Be afforded due process in any disciplinary action, including the right to hear charges, present their side, and appeal decisions to higher authority.
- Be secure from unreasonable searches of their person and personal property, and from unreasonable seizure of property.

Students have a responsibility to:

- Show respect for the educational process by attending school regularly and taking advantage of every opportunity offered to further their education, and not to interfere with the rights of fellow students to an education.
- Fulfill academic requirements.
- Be informed of and adhere to reasonable rules and regulations by local boards of education, implemented by school administrators and teachers.
- Obey the rules and regulations of the Board of Education and/or school administration, and to question them only for explanation and not in an argumentative context.
- Exercise courtesy and reason at all times, accept just punishments, avoid unreasonable appeals, and refrain from making false accusations.
- Refrain from actions which endanger self or others; this includes fighting, abusive language, and/or using threats or intimidation against other persons.
- Respect the human dignity and worth of every individual.
- Make the best contribution possible with their individual abilities, support the school in all phases of its programs or activities, be punctual and present regularly in the program or activity, and behave in such a way that their participation will be contribution and not a detriment.
- Follow established procedures in requesting the release of their records.
- Represent the truth in all school matters, complete all assignments in accordance with their teachers' instructions, and refrain from cheating in any school activities.
- Exercise courtesy and reason at all times, and accept just punishment.
- Refrain from bringing any controlled substances, contraband or dangerous items to school, school programs, or school activities.

Parent/Guardian Rights and Responsibilities

Parents have the right to:

- Send their children to schools with a positive educational climate.
- Expect that disruptions will be dealt with fairly, firmly, and quickly.
- Enroll their children in regularly scheduled classes with minimal interruption.
- Expect the school to maintain high academic standards.
- Be informed of and to review the academic progress of their children, as well as other pertinent information which may or may not be contained in a student's personal records.

Parents have the responsibility to:

- Prepare their children both physically and mentally to be receptive to education. This includes informing the child of the value of an education and a sense of respect for educators.
- Know and support the rules and disciplinary procedures of the school, and emphasize the importance of following the same.

- Insure their children's regular and prompt attendance, understanding that unnecessary absences affect the educational program for all students.
- Familiarize themselves with the educational program and the procedures.
- Initiate requests for conferences with teachers, counselors, or administrators to review academic progress or other matters.

Educator Rights and Responsibilities

Educators have the right to:

- Work in an environment free from excessive disruptions.
- Implement appropriate disciplinary procedures with administrative guidelines.
- Expect all assignments to be completed and turned in within acceptable time limits.
- Take disciplinary and/or legal action against physical harm or verbal abuse on school property or in attendance at school functions.
- Provide input in the formulation of policies related to students and school personnel.
- Expect students to exhibit good conduct, neatness, cleanliness, personal dress, and hygiene.
- Expect the support and respect of fellow educators, students, and parents.

Educators have a responsibility to:

- Maintain a positive learning atmosphere.
- Assist in the administration of such discipline as is necessary to maintain order throughout the school and to be aware of disciplinary policies and laws.
- Make assignments clearly understood by students, and to evaluate and return student assignments within a reasonable time.
- Practice good judgment in antagonistic confrontations.
- Support and administer the policies.
- Provide a good example of conduct, neatness, cleanliness, personal dress, and hygiene.
- Exhibit an attitude of respect for students and to develop and exhibit professional competence.

Parental rights guaranteed by the Family Educational Rights and Privacy Act are:

- To see their child's cumulative school record upon request and to have it explained and interpreted
- To challenge inaccurate portions of a child's records and to have a hearing and to appeal the matter if the decision is that the record is not accurate;
- To appeal unsatisfactory decisions made by school officials about their child's records;
- To permit in writing third parties to inspect their child's records (other than those who are permitted by regulation to inspect said records);
- To have the information in their child's files dealt with in a confidential way by school personnel as provided for in the HEW (Health, Education and Welfare) regulations and Administrative Regulations.

KRS 161.190 ABUSE OF THE TEACHER PROHIBITED

Whenever a teacher or school administrator is functioning in his capacity as an employee of a school board of education of a public school system, it shall be unlawful for any person to direct speech or conduct toward the teacher or school administrator when such person knows or should know that the speech or conduct will disrupt or interfere with normal school activities or will nullify or undermine the good order and discipline of the school.

BULLYING/HAZING

As referenced in board policy 09.422 the use of lewd, profane or vulgar language is prohibited. In addition, students shall not engage in behaviors such as hazing, bullying, menacing, taunting, intimidating, verbal or physical abuse of others, or other threatening behavior. This policy extends to any/all student language or behavior including, but not limited to, the use of electronic or online methods, and can include off school conduct. Such behavior is disruptive to the educational process and interferes with the ability of other students to take advantage of the educational opportunities offered.

Bullying refers to any unwanted verbal, physical, or social behavior among students that involves a real or perceived power imbalance and is repeated or has the potential to be repeated: 1. That occurs on school premises, on school-sponsored transportation, or at a school-sponsored event: or 2. That disrupts the education process.

This definition shall not be interpreted to prohibit civil exchange of opinions or debate or cultural practices protected under the state or federal Constitution where the opinion expressed does not otherwise materially or substantially disrupt the education process.

Hazing refers to an action which endangers the mental or physical health of a minor or student for the purpose of recruitment, initiation into, affiliation with, or enhancing or maintaining membership or status within any organization.

Students wishing to report the act of bullying/hazing or any violation of the Code of Conduct may report it to any classroom teacher at their school, who shall take appropriate action as defined by board policy, 09.422. The teacher shall refer the report to the principal/designee for further action when the report involves an offense that may warrant suspension or expulsion of a student, any felony offense, or a report that may be required by law, including reports to law enforcement and documentation required covering federally protected areas.

The principal and/or his designee will be responsible for investigation following board policy, reporting and appropriate disciplinary action if required.

SEARCH AND SEIZURE

Students have the right to be secure from unreasonable searches of their person and property. However, school authorities are authorized to search a student if they have reasonable suspicion that the search will reveal evidence that the student has violated or is violating this Code or a school rule or the law. Also, school authorities may conduct general inspections of jointly held property on a regular basis. All searches will be conducted in accordance with Board Policy 09.436. Students cannot expect to have complete privacy in their use of school property assigned for their use, such as desks and lockers.

HARASSMENT/DISCRIMINATION

Harassment/Discrimination is intimidation by threats of or actual physical violence: the creation, by whatever means, of a climate of hostility or intimidation, or the use of language, conduct, or symbols in such manner as to be commonly understood to convey hatred, contempt, or prejudice or to have the effect of insulting or stigmatizing an individual.

Conduct and/or actions prohibited under Policy 09.42811 include but are not limited to:

- Name-calling, stories, jokes, pictures, or objects that are offensive to one's gender, race, color, national origin, religion, or disability
- Unwanted touching, sexual advances, requests for sexual favors, and spreading sexual rumors
- Members of one gender being subjected to sexual remarks of the other gender in the context of the classroom
- Impeding the progress of a student in class by questioning the student's ability to do the required class work based on the gender, race, color, religion, national origin, or disability of the student

- Limiting student access to educational tools, such as computers based on the gender, race, color, religion, national origin, or disability of the student
- Teasing a student's subject choice or assignment based on the gender, race, color, religion, national origin, or disability of the student
- Students who engage in harassment/discrimination of an employee or another student shall be subject to disciplinary action, including but not limited to suspension or expulsion.

COMPLAINT PROCEDURE

Individuals who feel they have been victims of discrimination/harassment because of their **race, color, national origin, age, religion, marital status, sex** or **handicap** have the right to file an informal and/or a formal complaint. Information and forms for filing a complaint may be obtained in the school office, central office or through the district web site. The school will follow Board Policy 09.42811 on harassment discrimination.

CORPORAL PUNISHMENT

Board Policy 09.433 prohibits the use of corporal punishment.

CHRONICALLY DISRUPTIVE/REMOVAL OF STUDENTS

School administrators, teachers, or other school personnel may immediately remove or cause to be removed threatening or violent students from a classroom setting or from the District's transportation system pending any further disciplinary action that may occur. Threatening or violent behavior shall include, but not be limited to:

1. Disrupts the classroom environment and education process or the student challenges the authority of a supervising adult.
2. Verbal or written statements or gestures by students indicating intent to harm themselves, others or property.
3. Physical attack by students so as to intentionally inflict harm to themselves, others or property.

Per KRS 158.150, a student who is removed from the same classroom three (3) times within a thirty (30) day period shall be considered "chronically disruptive" and may be suspended from school and no other basis for suspension shall be deemed necessary.

Per KRS 158.150, at any time during the school year, a principal may permanently remove a student from a classroom for the remainder of the school year if the principal determines the student's continued placement in the classroom will chronically disrupt the education process for other students. The principal shall determine the placement of the student in lieu of that classroom, which may include, but is not limited to:

1. Another classroom in that school; or
2. An alternative setting or program, which may be provided virtually, as approved by the Superintendent

Permanent actions by the principal to remove a student from the classroom or preventing that student's re-entry on the basis that the student is chronically disruptive may be appealed to the Board of Education.

THREATS MADE BY STUDENTS

Based on KRS 158.150, the Board shall require the expulsion from school for a period of at least twelve (12) months for a student who is determined by the Board:

1. Through clear and convincing evidence to have made threats that pose a danger to the well-being of students, faculty, or staff of the District;
2. To have brought a weapon to a school under its jurisdiction per Board Policy 05.48.

WEAPONS

Students are never allowed to bring a weapon to school. The Board urges parents and other citizens to make sure that students do not have inappropriate access to weapons. Both Board policy and the law prohibit the carrying, bringing, using, or possessing of any weapon or dangerous instrument in any school building, on school grounds, in any school vehicle or at any school-sponsored activity. Except for authorized law enforcement officials, the Board specifically prohibits the carrying of concealed weapons on school property. When a student violates the prohibition on weapons, the Principal shall immediately make a report to the Superintendent, who shall determine if charges for expulsion are to be brought before the Board. Unless the Board chooses to consider charges on a case-by-case basis, the penalty for students bringing a firearm or other deadly weapon, destructive device, or booby trap device to school or onto the school campus/property under jurisdiction of the District shall be expulsion for a minimum of twelve (12) months. (The Gun-Free Schools Act of 1994 and KRS 158.150) District employees must also report to law enforcement officials if they know or have reasonable cause to believe that conduct has occurred that constitutes the carrying, possession, or use of a deadly weapon on the school premises, on a school bus, or at a school sponsored or sanctioned event.

It shall be the policy of the Fort Thomas Independent School District that school officials will notify the proper legal authorities of any violation of the Kentucky Criminal Code deemed serious enough for action.

RETALIATION PROHIBITED

Following board policy 09.42811, no one shall retaliate against an employee or student because s/he submits a grievance, assists or participates in an investigation, proceeding, or hearing regarding the charge of harassment/discrimination of an individual or because s/he has opposed language or conduct that violates this policy.

Upon the resolution of allegations, the Superintendent shall take steps to protect employees and students against retaliation.

DISCIPLINARY RESPONSES TO STUDENT MISCONDUCT

General Note: The inappropriate behaviors listed should apply while students are on school property or off school property at school sponsored activities; this includes going to school or sponsored trips and activities (KRS 161.180 and KRS 158.150 Kentucky Statutes and Laws). The examples listed below of inappropriate behaviors are for reference use and are not the only forms of the inappropriate behavior which could occur.

Elementary

Class I Offenses

1.1	<p>Disruption on School Property is the intentional act, behavior, or conduct in the school building or upon the school grounds, which disrupts the educational process.</p> <ul style="list-style-type: none"> I. Classroom <ul style="list-style-type: none"> a. Excessive or loud talking b. Inappropriate noise making c. Disruptive conflict between students d. Leaving seat without permission e. Emotional outburst f. Note writing g. Throwing of objects in the classroom h. Possession of toys or non-school items II. Hallways <ul style="list-style-type: none"> a. Excessive or loud talking b. Inappropriate noise making c. Disruptive conflict between students d. Running III. Lunchroom <ul style="list-style-type: none"> a. Loud talking b. Inappropriate noise making c. Disruptive conflict between students d. Inappropriate lunch manners IV. Restroom <ul style="list-style-type: none"> a. Excessive or loud talking b. Inappropriate noise making c. Disruptive conflict between students d. Inappropriate use of restroom facilities V. Outdoor Physical Education <ul style="list-style-type: none"> a. Disruptive conflict between students b. Intentional disruption of other classrooms which are engaged in the educational process c. Rough play
1.2	<p>Disrespect to Another Student is an intentional or willful maligning or gross insult including the use of any language, act, expression, or remark which is offensive to modesty or decency. (KRS 158.150 Kentucky Statutes and Laws)</p> <ul style="list-style-type: none"> I. On campus <ul style="list-style-type: none"> a. Foul language b. Intentional rudeness c. Intentional harassment d. Inappropriate gestures

	<p>e. Name calling</p> <p>f. Bullying</p>
1.3	<p>Failure to Complete Assignment is the failure to turn in assignments, or failure to do assignment within a specified time.</p> <p>I. Classroom</p> <p>a. Inattentive</p> <p>b. Not working on task</p> <p>c. Not having necessary materials to complete assignment</p> <p>II. Homework</p> <p>a. Inattentive to classroom examples</p> <p>b. Failure to know classroom assignments</p> <p>c. Not having necessary materials to complete assignments</p> <p>d. Refusal to complete assignments</p> <p>e. Incomplete assignment book</p>
1.4	<p>Academic Cheating is the use of unauthorized notes or other aids, or the copying or using of the work of other students without permission of the teacher. Academic cheating will result in a "0" for that assignment.</p>
1.5	<p>Lying is to make an untrue statement with intent to deceive or create a false or misleading impression.</p>
1.6	<p>Excessive Tardiness is the repeated failure (3 or more times) to report to assigned classroom or other instructional areas on time without an acceptable excuse.</p>
1.7	<p>Gambling is the act of wagering, betting, or taking risks for monetary or other gain.</p>
1.8	<p>Non-Permanent Defacing of School Property is the willful marking or defacing of school property that does not cause permanent damage.</p>
1.9	<p>Littering is the act, intentional or otherwise, of scattering debris on school grounds or property.</p>
1.10	<p>Gum Chewing or Eating Candy is prohibited. Gum chewing is always prohibited; eating treats may take place on special occasions.</p>
1.11	<p>Dangerous Physical Activities is engaging in activities that could cause physical damage to oneself or others.</p>
1.12	<p>Use of Profane language is the use of language, act, expression, or remark, which is offensive to modesty or decency.</p>
1.13	<p>Skipping Class is the failure of a student to report to a scheduled class without first obtaining consent of the proper school authority.</p>

Class II Offenses

NOTE: Violation of these rules is so extremely serious that such behavior may warrant suspension or expulsion of the violator even for a first offense.

2.1	<p>Fighting is any physical conflict between two or more students arising from anger of sudden passion</p>
2.2	<p>Physical Attack on Another Student or School Board Employee is the intentional striking or touching of another student or school board employee or attempt to do so against his or her will.</p>
2.3	<p>Teacher Abuse is any act that upbraids, insults or abuses any teacher of the public schools in the presence of the school or in the presence of a pupil of the school (KRS 161.190).</p>
2.4	<p>2.3 Vandalism is the willful or malicious destruction or defacement of any property.</p> <p>SCHOOL PROPERTY – not limited to but including the following:</p> <ul style="list-style-type: none"> • Breaking windows • Use of paint or like materials to deface • Destroying restroom fixtures • Destroying school issued materials

2.5	Stealing/Theft is the unlawful taking of property of another with intent to deprive him/her of the property. Receiving or possession of stolen property is included in this offense.
2.6	The Use, Possession or Distribution of Drugs, Alcohol, or Tobacco Products is PROHIBITED (KRS 438.050) (Ch 218.A)
2.7	Possession or use of weapons is PROHIBITED. NOTE: This includes the possession or use of knives, guns, brass knuckles, etc., and the use of all other objects such as pencils, baseball bats, and rocks with intent to be used as a weapon.
2.8	Leaving School Grounds Without Permission is the leaving of school grounds during the school day without obtaining permission of the principal or other authorized personnel. No student is permitted to leave the school grounds once on school property. (Parents must meet their children in the school office if their child is to leave school ground for a just cause.)
2.9	Trespassing is entering of , or remaining in, any structure, means of conveyance, or property without being authorized, licensed, or invited, and/or refusing to depart from there after being warned, or directed to do so, by proper authority.
2.10	Arson is the intentional damage of a building by starting a fire therein. (KRS 438.030)
2.11	Dangerous Instrument- Possession, handling, transmitting or use of items determined by the principal to be dangerous instruments but falls short of the KRS.527.070 definition of weapons.
2.12	Possession, Use or Distribution of Fireworks is prohibited. NOTE: Any combustible substance which produces a visible or audible effect is considered a firework.
2.13	Harassment/Discrimination is intimidation by threats of or actual physical violence; the creation by whatever means, language, conduct, or symbols in such manner as to be commonly understood to convey hatred, contempt, or prejudice or to have the effect of insulting or stigmatizing an individual. It is prohibited to harass or intimidate due to an individual's race, color, national origin, age, religion, marital status, political beliefs, sex, or disability.
2.14	Verbal abuse of Another Student is an intentional or willful maligning or gross insult of another student. (KRS 158.150 Kentucky Statutes and Laws.)
2.15	Distribution of Unauthorized Material is the distribution of pamphlets, leaflets, buttons, insignia, or the posting of signs or slogans without the permission of proper school authority.
2.16	Inappropriate behavior- Unacceptable behavior towards a student, teacher, or staff member that disrupts the learning environment.
2.17	Terroristic Threatening is the intentional, unlawful threat by word or act to do violence to the person or property of another or any act which creates a well-rounded fear within the other person.
2.18	Terroristic Threatening of School Personnel is the intentional, unlawful threat by word or act to do violence to the person or property of a school employee or any act which creates a well-founded fear with the school employee.
2.19	Extortion is the solicitation, either verbally, in writing or by printed communication, of money or anything of value from another person (regardless of amount) in return for protection or in connection with a threat to inflict harm.
2.20	Activation of a Fire Alarm is the intentional, unjustified activation of a fire alarm or like warning devices. (KRS 438.200 Kentucky Statutes and Laws.)
2.21	Possession Display or Distribution of Obscene Materials or Objects is the possession or circulation of obscene materials or objects.
2.22	Illegal use of School Facilities is the secreting or hiding of controlled substances (drugs) alcohol, weapons, or any other items detrimental to the welfare of students and the educational process.
2.23	Skipping School (Entire Day) is the unexcused and/or authorized absence from school for the entire designated school day.
2.24	Defiance of Authority is any verbal or non-verbal refusal to comply with a lawful directive or order of a school employee. (KRS 158.150 sub-section (1) Kentucky Statutes and Laws)
2.25	Incorrigible Bad Conduct Persistent violators of the Code of Conduct or persistent violations of the criminal laws of Kentucky constitute "Incorrigible Bad Conduct." Ten Class I offences during the school year may be considered "persistent." (KRS 158.150 subsection (1) Kentucky Statutes and Laws)

2.26	Bullying/Hazing - any unwanted verbal, physical, or social behavior among students that involves a real or perceived power imbalance and is repeated or has the potential to be repeated: 1. That occurs on school premises, on school-sponsored transportation, or at a school-sponsored event: or 2. That disrupts the education process OR an action which endangers the mental or physical health of a minor or student for the purpose of recruitment, initiation into, affiliation with, or enhancing or maintaining membership or status within any organization.
2.27	Chronically Disruptive - 1. Disrupts the classroom environment and education process or the student challenges the authority of a supervising adult, 2. Verbal or written statements or gestures by students indicating intent to harm themselves, others or property, or 3. Physical attack by students so as to intentionally inflict harm to themselves, others or property.

DISCIPLINARY PROCEDURES

Class I Offenses

<p>First Offense: In-school conference with student and/or parent. Parent may be notified depending on the nature of the offense.</p>
<p>Second Offense and Subsequent Offenses: Parent notification and/or conference along with any of the following disciplinary actions, not necessarily in this order:</p> <ul style="list-style-type: none"> • Extra academic assignment/Alternative assignment • Detention • Assignment to Homework Room • Referral to In-school Alternate Placement

Class II Offenses

<p>Parent notification and /or parent conference along with any of the following disciplinary actions, not in this order:</p> <ul style="list-style-type: none"> • Detention • Referral to In-school Alternative Setting/Time-out Room • Alternative Placement • Out of School Suspension • Expulsion by the Fort Thomas Board of Education • Referral to Civil Authorities

Highlands Middle School and Highlands High School

Use of Alcohol, Drugs and Other Prohibited Substances

No pupil shall purchase, possess, attempt to possess, use, be under the influence of, sell, or transfer any of the following on or about school property, at any location of a school-sponsored activity, or en route to or from school or a school-sponsored activity:

1. Alcoholic beverages;
2. Controlled substances, prohibited drugs and substances, and drug paraphernalia; and
3. Substances that "look like" a controlled substance. In instances involving look-alike substances, there must be evidence of the student's intent to pass off the item as a controlled substance.

In addition, students shall not possess prescription drugs for the purpose of sale or distribution.

First Offense: <ul style="list-style-type: none">• The superintendent or principal or assistant principal shall notify the student's counselor.• The superintendent or principal or assistant principal shall maintain a record of the incident a summary of the conference(s) held for the disposition of the incident.• There will be a minimum five (5) day suspension, a sixty (60) day restriction from any extracurricular activity, field trips and mandatory attendance at a school provided drug education program or acceptable alternative session <u>or</u> alternate school placement <u>or</u> a mandatory expulsion hearing.
Second Offense: <ul style="list-style-type: none">• The superintendent or principal or assistant principal shall notify student's counselor and the appropriate legal authorities, depending upon the severity of the incident.• The superintendent or principal or assistant principal may require that the parent(s), guardian(s), or other person(s) having legal custody of the student secure an evaluation of the student by a certified chemical dependency counselor or other qualified mental health professional or licensed physician to provide an opinion and recommendations regarding the student's use or abuse or addiction to controlled substances.• There will be a ten (10) day suspension and restriction from any extracurricular activity and field trips for one calendar year <u>or</u> alternate school placement <u>or</u> a mandatory expulsion hearing.
Third Offense: <ul style="list-style-type: none">• There will be a mandatory expulsion hearing.

Refer to Board Policy 09.123, page for policies regarding make-up work

REPORTING

Employees of the school shall promptly make a report to the local police department, sheriff, or Kentucky State Police, by telephone or otherwise, if they know or have reasonable cause to believe that conduct has occurred which constitutes the use, possession, or sale of controlled substances on the school premises or within one thousand (1000) feet of school premises, on a school bus, or at a school sponsored or sanctioned event. (Policy 09.423)

SMOKING

Smoking will not be tolerated by the Ft. Thomas Board of Education either to or from school, at lunch, or at school sponsored activities.

INAPPROPRIATE BEHAVIORS

General Note: The enumerated inappropriate behaviors listed here are applicable at all times while students are on school property as well as off school property at school sponsored trips and activities. (KRS 161.180 and KRS 158.150).

Class I Offenses

1.1	Classroom Disruption: an intentional act, behavior, or conduct in the classroom/labs, in the school building, upon school grounds or on field trips which disrupts the educational process.
1.2	Lack of Cooperation: failure of a student to comply with teacher instructions or to complete assignments, or refusal to abide by any teacher- made rule within the framework of general school policy.
1.3	Insubordination
1.4	Student Dishonesty: willful lying or cheating.
1.5	Tardiness: the failure of a student to report to assigned classrooms or other instructional areas at the beginning of class without an acceptable excuse.
1.6	Loitering: failure to be in an assigned area at the proper time.
1.7	Gambling: the act of betting either monetarily or otherwise. Examples include, but are not limited to, flipping for coins, playing cards, rolling dice, or other like games.
1.8	Selling or trading of Items: buying, selling and/or trading of items not previously approved by the building principal or designee.
1.9	Inappropriate Clothing: clothing that violates the school dress code policy.
1.10	Electronic Media/Internet Misuse: Violation of the Acceptable Use Policy
1.11	Use of Profane Language: language, act, expression, or remark which is offensive to modesty or decency.
1.12	Public Display of Affection: Inappropriate physical contact, such as hugging, kissing, and caressing.
1.13	Verbal Abuse and/or Threats: intentional or willful maligning or gross insult of another.

Class II Offenses

2.1	Habitual or repeated acts of Level I Offenses
2.2	Fighting: any physical conflict between two or more students.
2.3	Theft: taking or possessing the property of another.
2.4	Vandalism of Property: willful or malicious destruction or defacement of property.
2.5	Skiping Class: failure to report to class without consent of proper school authority.
2.6	Skiping Detention: failure to report for detention without consent of proper school authority.
2.7	Disrespect Shown to Teacher: words or actions by a student that shows a lack of regard for the teacher's personal or professional dignity.
2.8	Leaving Assigned Area Without Permission
2.9	Refusing to Accept Discipline by the Teacher: action that constitutes defiance.

2.10	Inappropriate use of social media , as described in Telecommunication Devices
2.11	Failure to Comply with Attendance Procedures as defined by policy.
2.12	Inappropriate Behavior at school functions as defined by policy
2.13	Forgery : act of falsely using the name of another person, or falsifying documents or any correspondence (absences-excuses) from or to the school. Examples include, but are not limited to, detention notices, doctor notes, notes from home and use of another student's work.
2.14	Extortion : solicitation of money, or something of value, from another student, regardless of the amount, in return for protection, or in connection with a threat to inflict harm.
2.15	Harassment : as defined in Board Policy 09.42811.
2.16	Smoking/Smoking Paraphernalia : The use and/or possession of tobacco products and possession of smoking paraphernalia (lighter, matches, cigarette packs, tobacco containers, etc.) is prohibited.
2.17	Indecent exposure : mooning or like activities.
2.18	Bullying/Hazing - any unwanted verbal, physical, or social behavior among students that involves a real or perceived power imbalance and is repeated or has the potential to be repeated: 1. That occurs on school premises, on school-sponsored transportation, or at a school-sponsored event; or 2. That disrupts the education process OR an action which endangers the mental or physical health of a minor or student for the purpose of recruitment, initiation into, affiliation with, or enhancing or maintaining membership or status within any organization.
2.27	Chronically Disruptive - 1. Disrupts the classroom environment and education process or the student challenges the authority of a supervising adult, 2. Verbal or written statements or gestures by students indicating intent to harm themselves, others or property, or 3. Physical attack by students so as to intentionally inflict harm to themselves, others or property.

Class III Offenses: SERIOUS - REQUIRE ADMINISTRATIVE ACTION, ATTENTION OF THE SCHOOL BOARD AND/OR APPROPRIATE LAW ENFORCEMENT OFFICIALS

3.1	Habitual and repeated acts of Level 1 and 2 Offenses
3.2	Destruction of School Property , including but not limited to Arson.
3.3	Possession, Use, Under the Influence, or Distribution of a Controlled Substance , Including Alcohol, Marijuana, Drugs, Drug Paraphernalia, or Look-Alike Substances.
3.4	Assault of School Personnel or Student : the intentional striking of a school employee or student as defined by KRS-218.
3.5	Incorrigibility : the persistent violation of the Code of Conduct as defined by KRS 158.150.
3.6	Endangering the Safety of Others : behavior that endangers another person such as throwing objects, shooting fireworks, making unnecessary emergency calls, etc.
3.7	Commission of Sexual Acts : commission or attempted commission of sexual intercourse, rape, or sodomy.
3.8	Abuse of Fire Alarms or Extinguishers : unjustified use of alarms or extinguishers as defined by KRS 438.200.
3.9	Possession or Use of Any Object, Weapon, or Look Alike Weapons
3.10	Prescription/"Over the Counter" Drugs/Non-Prescribes Drugs : possession of prescribed and over the counter medications at school without proper authorization in accordance with school policy.

3.11	Terroristic Threatening: threat to commit a crime likely to result in death or serious physical injury to another person or likely to result in substantial property damage; intentionally makes false statements for the purpose of causing evacuation of a building or place of assembly.
3.12	Persistent inappropriate use of social media , as described in Telecommunication Devices
3.13	Persistent and on-going insubordination.
3.14	Persistent and on-going harassment.

DISCIPLINARY PROCEDURES

Class I Offenses

<p>(Not listed in any order)</p> <ul style="list-style-type: none"> • Conference/reprimand • Parent/guardian Contact • Detention and/or written assignments • Office Referral • Demerits • Work Assignment • Restrictions • Saturday School

Class II Offenses

<p>(Not listed in any order)</p> <ul style="list-style-type: none"> • Conference - Parent/guardian notification • Detention • Suspension • Work assignment • Loss of activities, related privileges • In-school alternative placement • Restrictions • Saturday School • Expulsion

Class III Offenses

<p>(Not listed in any order)</p> <ul style="list-style-type: none"> • Conference and notification of parent/guardian • Suspension (long-term or short-term) • In-school alternative placement • Off-campus alternate placement • Expulsion • Notification of proper legal authorities • Restitution • Medical and/or psychological evaluation at the student's expense by a board designated professional • Saturday School • Restrictions
--

Students with Disabilities

To comply with federal and state statutes and regulations related to the Individuals with Disabilities Education Act (IDEA), the discipline of eligible students with disabilities will be applied on a case-by-case basis. IDEA-eligible students may be expelled for behavior unrelated to their disabilities, as long as the procedural safeguards required by IDEA and KRS 158.150 are followed.

ACCESS TO ELECTRONIC MEDIA

RESPONSIBLE USE POLICY

The Board supports reasonable access to various information formats for students, staff and the community and believes it is incumbent upon users to utilize this privilege in an appropriate and responsible manner as required by this policy and related procedures, which apply to all parties who use District technology.

Safety Procedures and Guidelines

The Superintendent shall develop and implement appropriate procedures to provide guidance for student, staff, and community access to electronic media. Guidelines shall address teacher supervision of student computer use, ethical use of electronic media (including, but not limited to, the Internet, e-mail and other District technological resources), and issues of privacy versus administrative review of electronic files and communications. In addition, guidelines shall prohibit utilization of networks for prohibited or illegal activities, the intentional spreading of embedded messages, or the use of other programs with the potential of damaging or destroying programs or data.

Students shall be provided instruction about appropriate online behavior, including interacting with other individuals on social networking sites/chats and cyberbullying awareness and response.

Internet safety measures, which shall apply to all District-owned devices with Internet access or personal devices that are permitted to access the District's network, shall be implemented that effectively address the following:

- Controlling access by minors to inappropriate matter on the Internet and World Wide Web;
- Safety and security of minors when they are using electronic mail, chat rooms, and other forms of direct electronic communications;
- Preventing unauthorized access, including "hacking" and other unlawful activities by minors online;
- Unauthorized disclosure, use and dissemination of personal information regarding minors; and
- Restricting minors' access to materials harmful to them.

A technology protection measure may be disabled by the Board's designee during use by an adult to enable access for bona fide research or other lawful purpose.

The District shall provide reasonable public notice of, and at least one (1) public hearing or meeting to address and communicate, its initial Internet safety measures.

Specific expectations for appropriate Internet use shall be reflected in the District's code of acceptable behavior and discipline including appropriate orientation for staff and students.

Permission/Agreement Form

A parental request shall be required prior to the student being granted independent access to electronic media involving District technological resources.

The required permission/agreement form, which shall specify responsible uses, rules of on-line behavior, access privileges and penalties for policy/procedural violations, must be signed by the parent or legal guardian of minor students (those under 18 years of age). This document shall be kept on file as a legal, binding document. In order to modify or rescind the agreement, the student's parent/guardian (or the student who is at least 18 years old) must provide the Superintendent with a written request.

Use of School Owned Electronic Devices

Electronic devices may be made available for student use but shall be the responsibility of the person to whom the device is issued and be subject to all provisions set out in the policy and related procedures. In addition, a signed RUP form must be completed online before an electronic device is issued to a student.

Agreement Form for Staff and Community Members

A written request/agreement shall be required prior to staff and/or community members being granted independent access to electronic media involving District technological resources.

The required request/agreement form, which shall specify acceptable uses, rules of on-line behavior, access privileges and penalties for policy/procedural violations must be signed by a staff member. This document shall be kept on file as a legal, binding document.

Employee Use

Employees are encouraged to use electronic mail and other District technology resources to promote student learning and communication with the home and education-related entities. If those resources are used, they shall be used primarily for purposes directly related to work-related activities.

Technology-based materials, activities and communication tools shall be appropriate for and within the range of the knowledge, understanding, age and maturity of students with whom they are used.

District employees and activity sponsors may set up blogs and other social networking accounts using District resources and following District guidelines to promote communications with students, parents, and the community concerning school-related activities and for the purpose of supplementing classroom instruction.

Networking, communication and other options offering instructional benefits may be used for the purpose of supplementing classroom instruction and to promote communications with students and parents concerning school-related activities.

In order for District employees and activity sponsors to utilize a social networking site for instructional, administrative or other work-related communication purposes, they shall comply with the following:

1. They shall request prior permission from the Superintendent/designee.
2. If permission is granted, staff members will set up the site following any District guidelines developed by the Superintendent's designee.
3. Guidelines may specify whether access to the site must be given to school/District technology staff.
4. If written parental consent is not otherwise granted through RUP forms provided by the District, staff shall notify parents of the site and obtain written permission for students to become "friends" prior to the students being granted access. This permission shall be kept on file at the school as determined by the Principal.
5. Once the site has been created, the sponsoring staff member is responsible for the following:
 - a. Monitoring and managing the site to promote safe and responsible use; and
 - b. Observing confidentiality restrictions concerning release of student information under state and federal law.

Staff members are discouraged from creating personal social networking sites to which they invite students to be friends. Employees taking such action do so at their own risk.

All employees shall be subject to disciplinary action if their conduct relating to use of technology or online resources violates this policy or other applicable policy, statutory or regulatory provisions governing employee conduct. The Professional Code of Ethics for Kentucky School Certified Personnel requires certified staff to protect the health, safety, and emotional well-being of students and confidentiality of student information. Conduct in violation of this Code, including, but not limited to, such conduct relating to the use of technology or online resources, must be reported to Education Professional Standards Board (EPSB) as required by law and may form the basis for disciplinary action up to and including termination.

Once an individual is no longer employed with the Fort Thomas Independent Schools, he/she no longer retains the rights to a Fort Thomas Independent Schools network account (this includes both file storage and electronic mail). Employees who leave at the end of the school year will have account access through June 30. Employees who leave midyear will have account access for up to one (1) month. Back-up/transfer of data (including emails) is the responsibility of each individual employee.

Disregard of Rules

Individuals who refuse to sign required responsible use documents or who violate District rules governing the use of District technology shall be subject to loss or restriction of the privilege of using equipment, software, information access systems or other computing and telecommunications technologies.

Employees and students shall be subject to disciplinary action, up to and including termination (employees) and expulsion (students) for violating this policy and responsible use rules and regulations established by the school or District.

Responsibility for Damages

Students or staff members who deface a District web site or otherwise make unauthorized changes to a web site shall be subject to disciplinary action, up to and including expulsion and termination, as appropriate.

Responding to Concerns

School officials shall apply the same criterion of educational suitability used to review other educational resources when questions arise concerning access to specific databases or other electronic media.

Audit of Use

Users with network access shall not utilize District resources to establish electronic mail accounts through third party providers or any other nonstandard electronic mail system.

The Superintendent/designee shall establish a process to determine whether the District's education technology is being used for purposes prohibited by law or for accessing sexually explicit materials. The process shall include, but not be limited to:

- Utilizing technology that meets requirements of Kentucky Administrative Regulations and that blocks or filters Internet access for both minors and adults to certain visual depictions that are obscene, child pornography, or, with respect to computers with Internet access by minors, harmful to minors;
- Maintaining and securing a usage log; and
- Monitoring online activities of minors.

Retention of Records for E-Rate Participants

Following initial adoption, this policy and documentation of implementation shall be retained for at least five (5) years after the last day of service in a particular funding year.

TELECOMMUNICATION DEVICES – POSSESSION AND USE

While on school property or while attending school-sponsored or school-related activities, whether on or off school property, students may be permitted to possess and use personal telecommunications devices as defined by law and other related electronic devices, provided they observe the following conditions:

1. Devices shall not be used in a manner that disrupts the educational process, including, but not limited to, use that:
 - a. Poses a threat to academic integrity, such as cheating,
 - b. Violates confidentiality or privacy rights of another individual,
 - c. Is profane, indecent, or obscene,
 - d. Constitutes or promotes illegal activity or activity in violation of school rules, or
 - e. Constitutes or promotes sending, sharing, or possessing sexually explicit messages, photographs, or images using any electronic device.

These restrictions shall not be interpreted to prohibit material protected under the state or federal constitutions where such material does not otherwise materially or substantially disrupt the education process or intrude upon the rights of others.

2. When students violate prohibitions of this policy, they shall be subject to disciplinary action, including losing the privilege of bringing the device onto school property and being reported to their parent/guardian. A violation also may result in a report being made to law enforcement. In addition, an administrator may confiscate the device, which shall only be returned to the student's parent/guardian.
3. Students are responsible for keeping up with devices they bring to school. The District shall not be responsible for loss, theft, or destruction of devices brought onto school property.
4. Students shall comply with any additional rules developed by the school concerning appropriate use of telecommunication or other electronic devices.
5. Students shall not utilize a telecommunication or similar electronic device in a manner that would violate the District's Responsible Use policy or procedures or its Code of Acceptable Behavior and Discipline.

SPECIAL POLICIES

Each school will develop standards in keeping with board policies and procedures to address the following:

- Pick-up, drop-off and dismissal procedures
- Lunchroom visitation
- General supervision
- Food & snacks served in classrooms
- Rules of dress and appearance
- Homework
- Field trips

Each school shall develop and publish a Code of Conduct handbook that incorporates this district framework.

Furthermore, the Code will be available each year on our website as well as attached in our school level handbooks. These handbooks are also available through the parent updates for online registration. Faculty and staff members will receive copies when completing yearly training provided by the district.