

WELCOME TO GAYLORD COMMUNITY SCHOOLS



2022-2023 School Year

GCS HAS A MISSION AND SLOGAN

District Mission

Our mission is to provide a quality education that inspires each and every student to achieve their potential and become productive citizens.

District Slogan

“Building a better community through each and every student”

RESILIENCE

2022-2023 SCHOOL YEAR CELEBRATIONS

- **Hiring 50+ New Staff**
- **Opening of School – First 8 Weeks**
- **Return to Community and School Events with Staff and Community Involvement**
- **Student Growth and Achievement**
- **Fiscal Stewardship – Audit**
- **School Safety/Student Resilience Focus**

DISTRICT DATA

300+ Employees

- **167 Teachers**
- **80 Administrative Support Personnel**
- **23 Food Service Staff Members**
- **22 Bus Drivers**
- **14 Administrators**

Contracted Services

- **Custodial Services**
- **Substitutes**
- **Technology Services**

Adopted Budget

- **\$36 million**



GCS ranks among one of the largest Michigan public school districts with approximately 2,800 students.

ENROLLMENT HISTORY

| School Year | Enrollment |
|-------------|------------|
| Fall 2018 | 3,085 |
| Fall 2019 | 2,975 |
| Fall 2020 | 2,794 |
| Fall 2021 | 2,818 |
| Fall 2022 | 2,794 |

FREE & REDUCED LUNCH HISTORY

| School Year | % F/R Lunch |
|-------------|-------------|
| Fall 2018 | 49% |
| Fall 2019 | 51% |
| Fall 2020 | 53% |
| Fall 2021 | 52% |
| Fall 2022 | 51% |

GHS ADVANCED PLACEMENT

Advanced Placement courses offer students the opportunity to earn college credit through a successful score on the end-of-year exam.

Courses offered:

English • Foreign Language • Math • Science • Social Studies

Total Enrollment: 250+ Students Each Year



GHS CAREER & TECHNICAL EDUCATION



Accounting
Automotive Technology
Business & Computer Technology
Co-op
Culinary Arts
Marketing
Medical Occupations

Total Enrollment:
400 - 500 Students Each Year

NORTH CENTRAL *NOW!* EARLY COLLEGE

We are in the 8th year of our Early College partnership with NCMC.

- ✓ No cost to students for tuition or books!
- ✓ Students will graduate after their fifth year of high school with a GHS diploma and an associate's degree from NCMC!
- ✓ Early College Paths:
 - General Studies
 - Liberal Arts
 - STEM



CTE PARTNERSHIP WITH KIRTLAND COMMUNITY COLLEGE

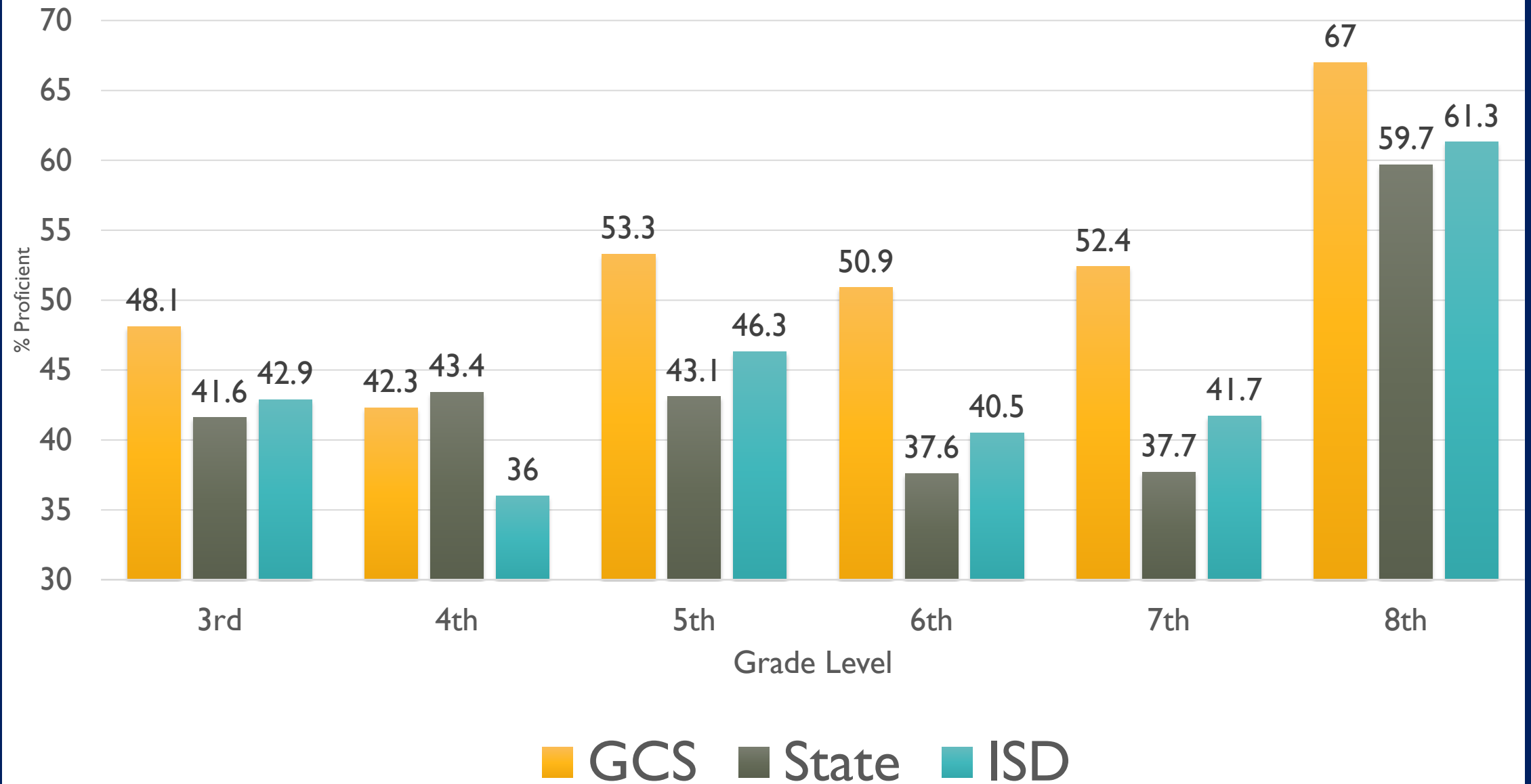


- ❖ **Mechatronics**
- ❖ **Welding & Fabricating Technology**

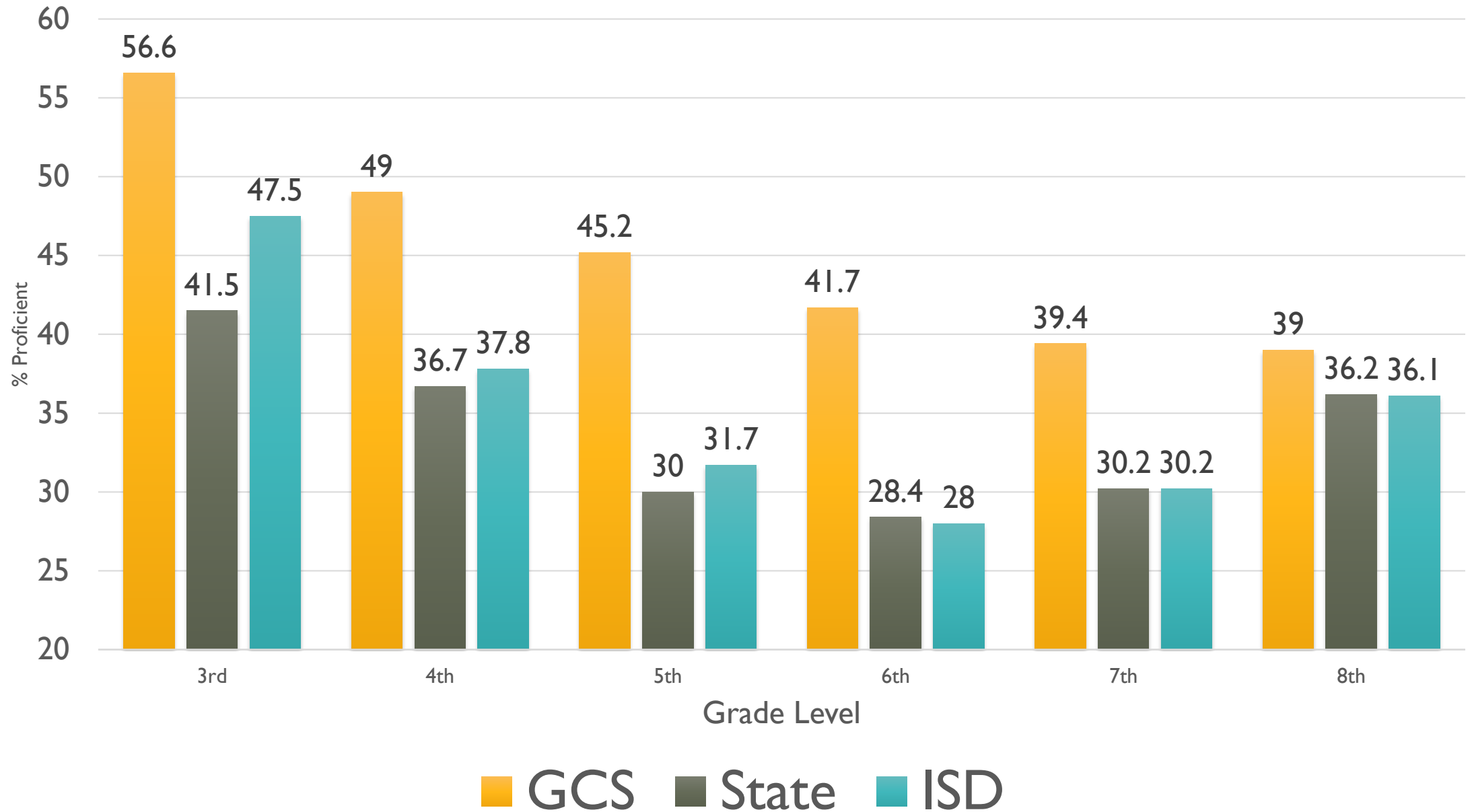
M-STEP ADVANCED AND PROFICIENT LEVELS



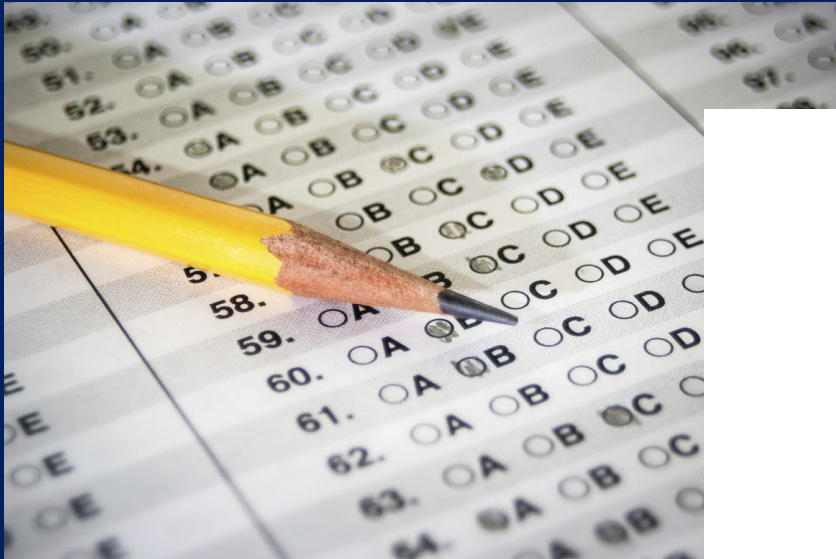
2022 M-STEP/PSAT ELA



2022 M-STEP/PSAT Math

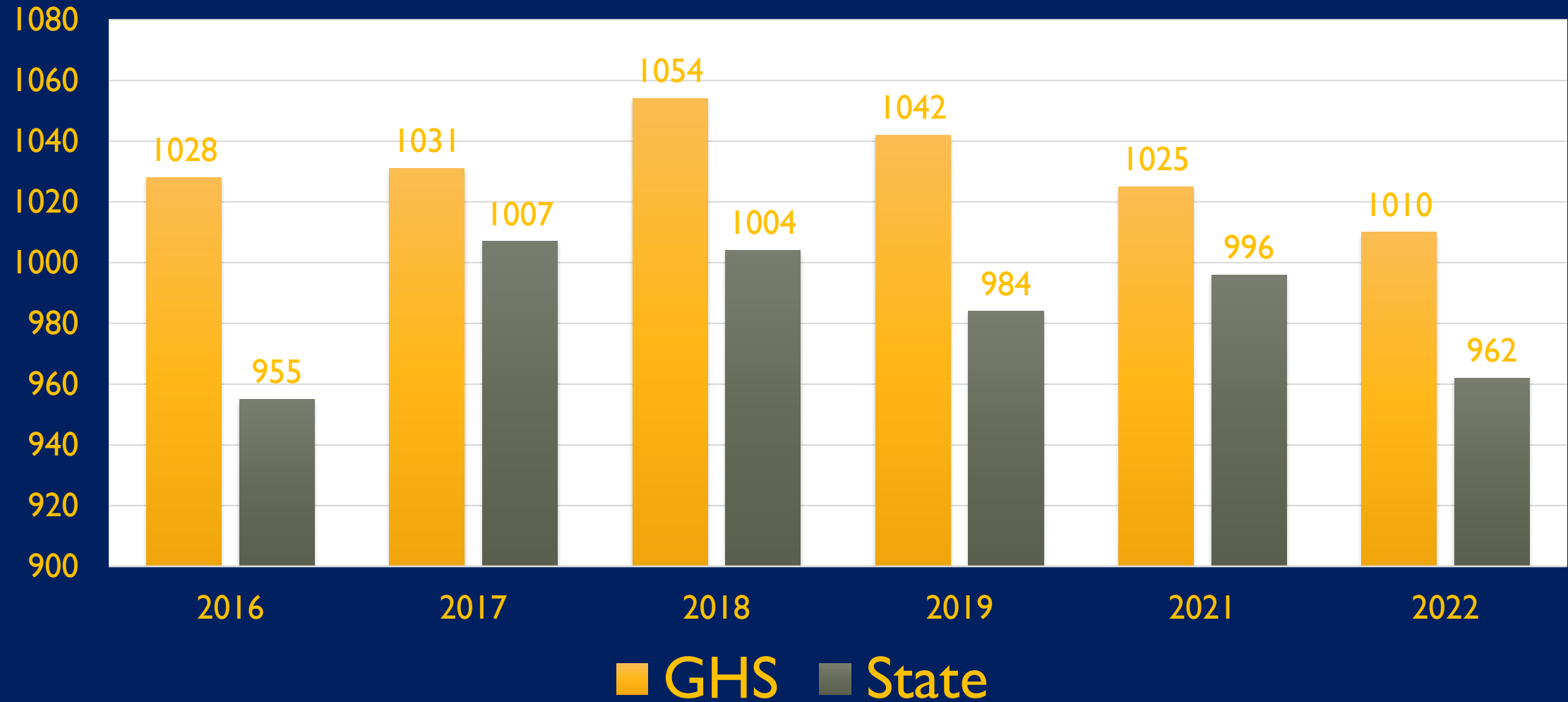


SAT



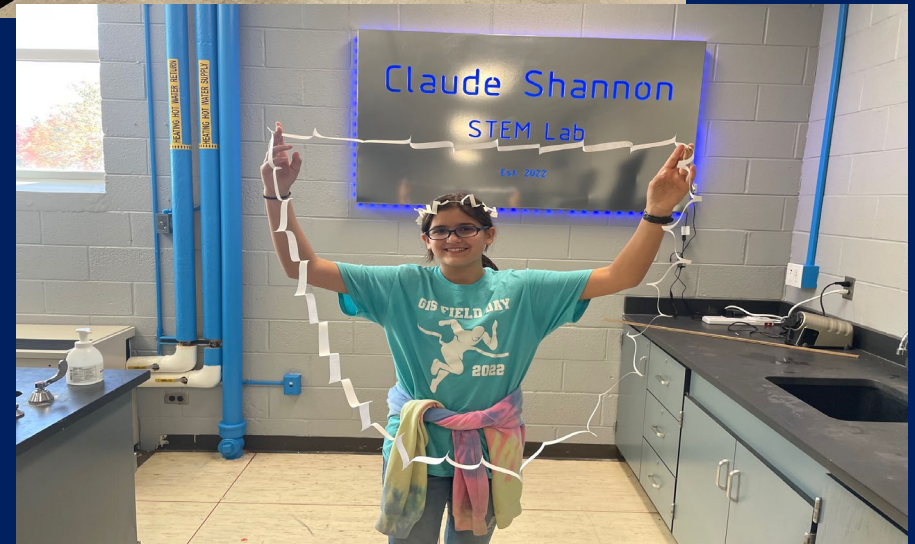
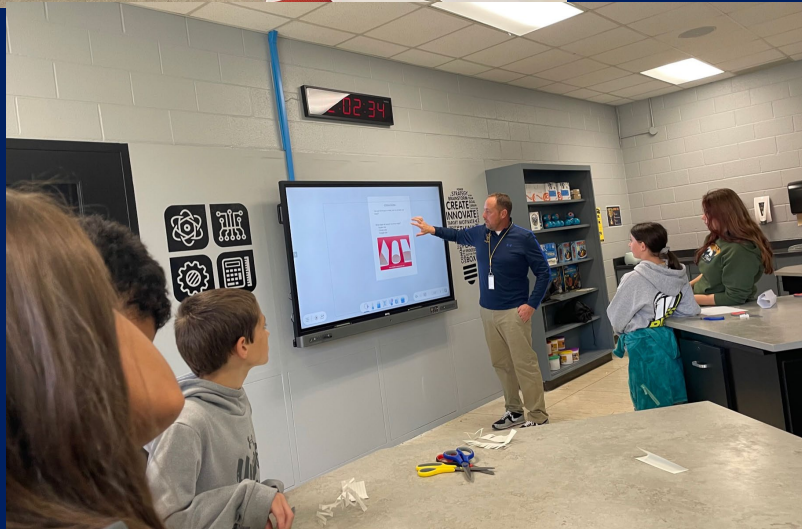
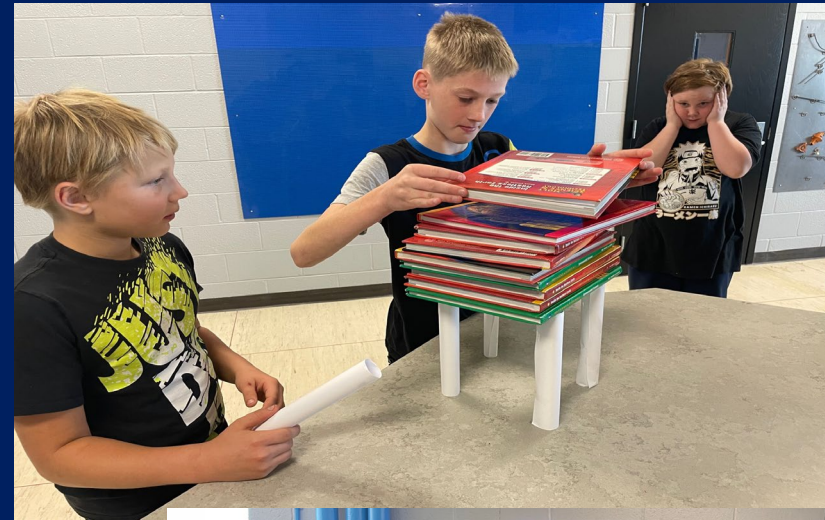
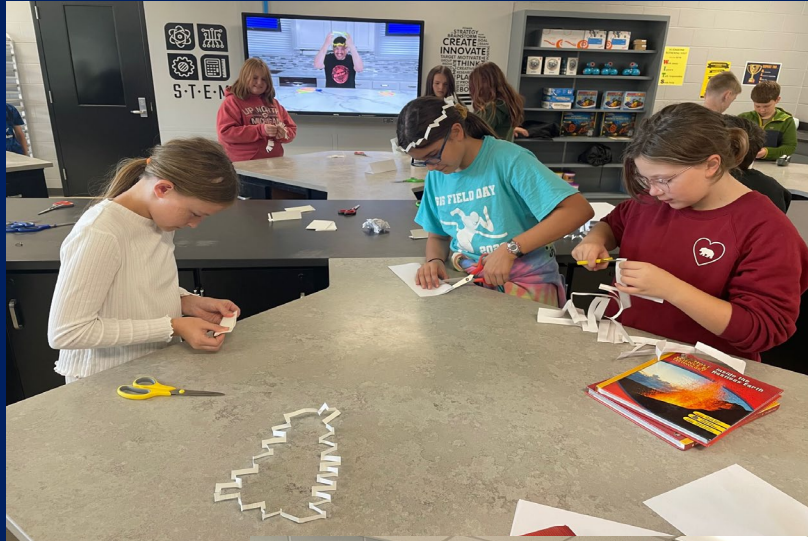
SAT[®]

SAT HISTORICAL COMPARISON BETWEEN GHS AND STATE OF MICHIGAN



GAYLORD INTERMEDIATE SCHOOL STEM LAB

ENDLESS POSSIBILITIES



GAYLORD BLUE DEVIL WELLNES CENTER

- ✓ The Gaylord Blue Devil Wellness Center is a school-based health facility.
- ✓ It is operated by the Health Department of Northwest Michigan and located in Gaylord High School.
- ✓ Health care services are provided to individuals ranging from 10 to 21 years old.

ALL SERVICES ARE FREE!



GAYLORD YOUTH SUPPORT

This is a school-based behavioral health program conveniently located in all three elementary buildings and the middle school building.

With parent/guardian permission, a licensed clinical social worker offers individual, group, and family therapy.

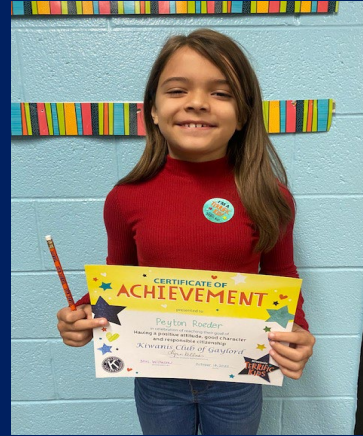


ADDITIONAL PROGRAMS AT GCS

GCS provides a preschool program. Two classrooms are available at North Ohio Elementary School.

GCS offers after school child care for students in preschool through sixth grade. Programs are available in each elementary school building.

GREAT THINGS ARE HAPPENING AT GCS!



2022 GCS BOARD OF EDUCATION

Jeff Wieber, President

Jeff Gorno, Vice President

Mike Fessler, Treasurer

Katie Drzewiecki, Secretary

Brad Bensinger, Trustee

Sara Gapinski, Trustee

James Vanderveer, Trustee





THANK YOU!