



PANTHER

Pride

1150 Northshore Drive • North Sioux City, SD 57049

Volume 30, Number 1

Welcome...

to the start of the 2023-2024 school year. Classes will begin for students in grades 6-12 on Wednesday, August 16 and on August 18 for students in grades JK-5.



August 15
5:30 pm to 7:00 pm



There will not be
Pre-Payment days this year.

PICTURE DAY

Elementary: August 29

Upper Elementary/Middle School: August 31

High School: August 30

Makeup Date: September 28

Every Learner. Future Ready.

The Mission of the Dakota Valley School District is:
*Preparing every learner to engage fully and competitively in education
to accomplish exemplary success and elevated experiences in life.*

www.dvschools.com

ADMINISTRATION CENTER PERSONNEL



Dr. Tonia Warzecha,
Superintendent



Welcome to the 2023-24 school year!

Once again, we are so fortunate to launch a new school year with approximately 1,400 Panthers from grades Junior Kindergarten through twelve. Administrators, teachers, and staff have spent many hours preparing the facilities, classrooms, and instruction to welcome everyone back this August. This edition of the Panther Pride provides great information for you as we begin this new year. Please take time to review the Pride as well as visit our school website for additional information.

A large focus of the work that we have been doing focuses on our school improvement efforts. A formalized school improvement plan is a necessary requirement of our South Dakota Department of Education accreditation process, but it is also an opportunity to take a deep look at what we are doing well and areas in which we can improve.

Focus group sessions were hosted last October for parents, staff, the School Board, and community members to provide feedback related to Dakota Valley's future. We had a wonderful turnout and great discussions. The feedback provided was then used to identify the pillars and focus areas of Dakota Valley's five-year strategic plan, which is outlined on the next page. These pillars indicate the four foundations of Dakota Valley School District while the focus areas create belief statements within those pillars. The administrators and I have been developing strategies and goals within each of those pillars to guide our work for the next five years. It is exciting work as we identify all the bright spots within Dakota Valley and work to make the future even brighter.

As part of our school improvement efforts, we are committed to improving our district services for families and have focused on three areas: online registration of students, school lunch payments, and bus route communication.

- **Online Student Registration:** To avoid the annual mountain of paperwork that each family needed to complete to register their students each year we have moved everything completely ONLINE! No more need to fill out your address, telephone number, emergency contacts multiple times in paper format. The online process is quick and easy!
- **School Lunch Payment:** We have integrated the school lunch payment directly into Infinite Campus, which is the same place you go to check your student's grades. Payments can be made online, and you will receive text messages when your child's lunch balance is low and needing a deposit.
- **Bus Communication:** Starting in Fall 2023, all families who have students riding the bus can sign up to receive communications directly from their child's bus driver or Harlow's Transportation company through an app called Bus Bulletin. Bus Bulletin can be used to send notifications to specific bus routes if buses are running late, if routes have been combined, or if there are other issues related to busing. This is a GREAT addition to our services to families to improve communication at all levels.

We are continually seeking opportunities to improve our services to students and families and ensure that we are providing the highest quality education for all of our Panthers. Dakota Valley is an amazing place to be, and we are so proud to be your educational partners. We are looking forward to a great 2023-24 school year and can't wait to welcome everyone back!

Best wishes,
Dr. Warzecha



Jill Spender
Business Manager



2023-24 SCHOOL BOARD MEMBERS

Jeff Dooley
Steve Kistner
Andrew Nilges
Matt Thompson
Sara Weber

Administration Center

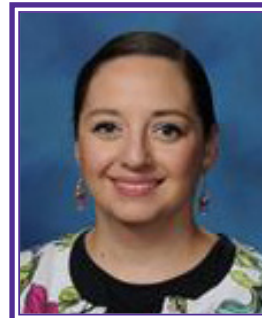
1150 Northshore Drive
North Sioux City, SD 57049
Phone: (605) 422-3800
Fax: (605) 422-3807

Hours:

M-F 8:00 am to 4:00 pm



Jody Robertson
District Admin. Assistant



Marcela Dietrich
District Admin. Assistant

#DVProud



SCHOOL IMPROVEMENT INFO

ONLINE CAMPUS REGISTRATION

As a direct result of that input, the District identified a priority of continually seeking to improve the utilization and delivery of district services and resources. Therefore, we have turned feedback into action and focused on implementing online student registration rather than having families fill out paperwork every year to register their child for the upcoming school year. Families new to the district will also be able to register their child(ren) online rather than visiting each school to pick up a packet of paperwork. The online registration is simple to navigate and will be used by current families to register their children for the next school year and by new families when they are enrolling their children at Dakota Valley for the first time.

New families will access online registration directly from the school website by clicking the link under the section titled "New Families." The parent or caregiver will enter the required information and click submit. A confirmation email will then be sent with a link to the Online Registration Tool, which guides the user through a series of questions to enter all required information for enrolling your child, such as mailing information, emergency contact information, health information, and medication history.

Current families, those with at least one child currently attending school at Dakota Valley, will access the online registration tool by visiting www.dvschools.com/families/registration and clicking "Current Families/Students" or logging into the Parent Portal and clicking on the registration link. In the Online Registration tool, select the Registration Year (the next school year) and click Begin Registration. Previously entered information will auto populate so the parent or caregiver will just need to review existing information and make any updates as necessary.

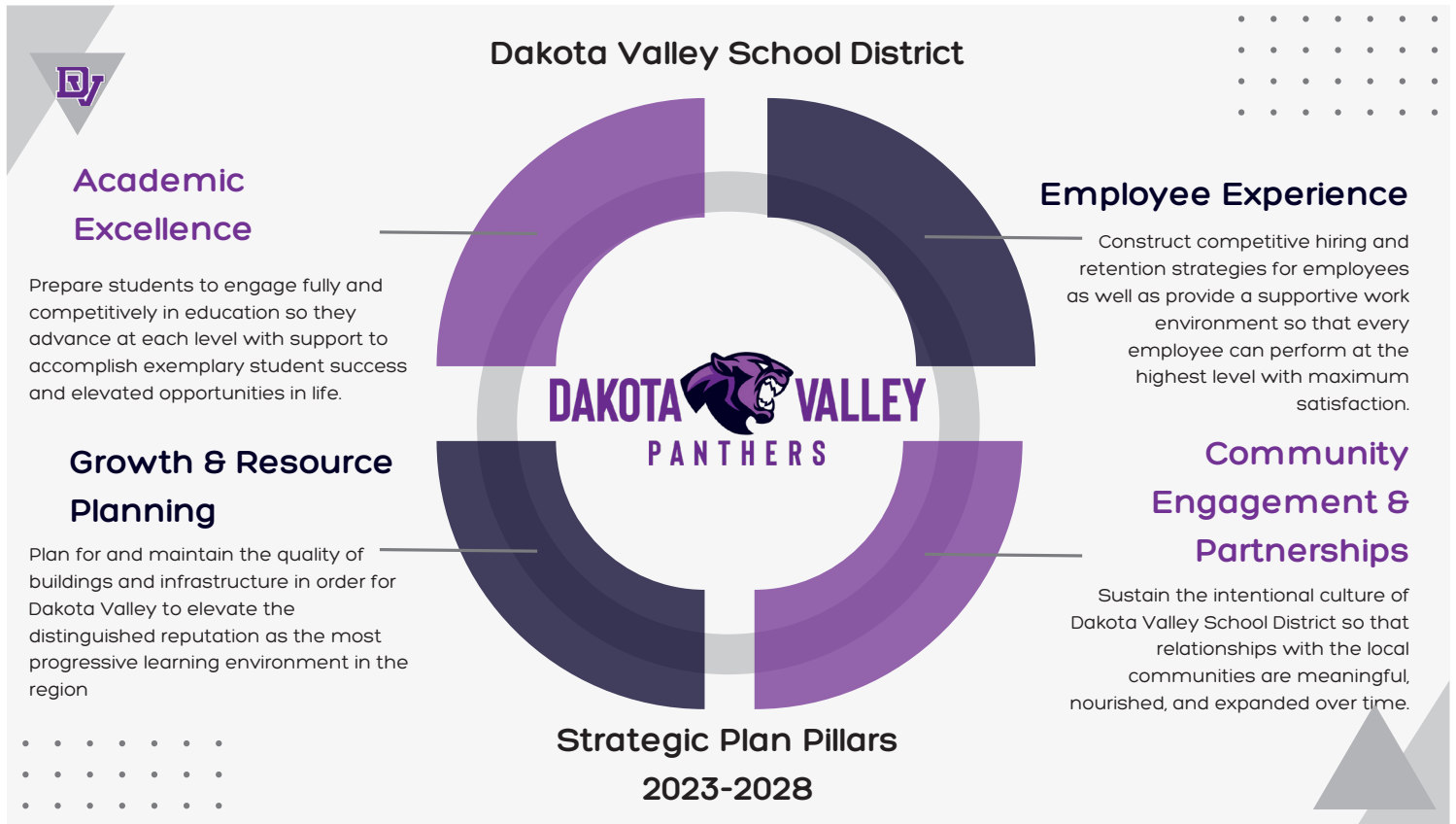
If you do not have access to a computer, or an email address, we provide an option that allows you to enter your information using an available kiosk location. This kiosk location will be in the district's administrative offices on Westshore Dr. The kiosk option is only recommended for families without internet and computer access. If you choose this option, the kiosk will have step by step instructions as you proceed with your student's enrollment. Applications can be saved and returned to later if needed. It's important to note your application number which will be presented to you when you begin the registration process.

If you are registering a new student, please have the following items ready before starting the process:

- Birth Certificate
- 2 Proofs of Residency
- Immunization Records

At the end of the registration process, there are several release agreements depending on the grade of your student. The final step is a digital signature granting consent to the options selected on the application.

The new Online Registration process will eliminate paperwork, save time, and make enrolling your student easier, thus improving services to our families. If you haven't already done so, please make sure you have a parent portal account as these will be needed moving forward each year to update your census information. Scan the QR below to fill out a parent portal request if you don't currently have one. Registration for the 23/24 school year is now open!



(ES: JK-3; UE: 4-5; MS: 6-8)

IMMUNIZATIONS

South Dakota law (SDCL 13-28-7.1) requires any student entering school in this state, prior to admission, to provide to school authorities certification from a licensed physician that he/she has received or is in the process of receiving adequate immunization against poliomyelitis, diphtheria, pertussis, tetanus, and MMR (measles, mumps, rubella), according to the recommendations of the South Dakota Department of Health. The current minimum immunization requirements are defined as:

- 4 doses of diphtheria, tetanus, pertussis vaccine (DTaP or DTP)
- 4 doses of poliovirus vaccine
- 2 doses of MMR (measles, mumps, rubella) vaccine
- (Incoming kindergarten students only) Effective Aug. 2007, two doses of varicella (chicken pox) vaccine administered after the age of 12 months or history of disease. Parental history is acceptable and physician documentation is necessary!

The current complete South Dakota Department of Health immunization requirements for school entry may be viewed online at <https://doh.sd.gov/family/childhood/immunization/school.aspx>.

6TH GRADE IMMUNIZATION LAW

All Children entering 6th grade are required to receive additional immunizations prior to enrolling for the school year. All students will be required to provide proof that they have received both of the following immunizations before school starts:

- One Dose of TDAP (Tetanus, Diphtheria, Pertussis)
- One Dose of MCV4 (Meningococcal ACYW)

The school district will be required to submit aggregate data to the SD Dept. Of Health.

ATTENDANCE AT SCHOOL DISTRICT EVENTS

Children in grades K-4 **may not attend** school district events such as sporting events, concerts, plays, etc. unless they are accompanied by an adult.

ATTENDANCE INFO

If a student is absent, a parent is requested to notify the DVMS/UE Office by 9:00 a.m. either by phone/voicemail (605) 422-3830 or email DakotaValleyUE@k12.sd.us for grades 4-5 and DakotaValleyMS@k12.sd.us for grades 6-8. If the office has not been notified the student will be marked as UNEXCUSED ABSENCE and the parent will be contacted by phone and/or email to ensure your child is safely accounted for. We need a parent/guardian to confirm the absence and acknowledge they know why their child is not in school.

BIRTH CERTIFICATE

South Dakota state law requires that the school have a copy of the certified birth certificate of each student enrolled in our school system. When we receive your child's records, we will be contacting you if there is not a copy of his/her birth certificate on file. Please send us a copy of the birth certificate or bring us the original, and we will make a copy for our records.

ELEMENTARY SCHOOL HOURS

Mailing Address: 1150 Northshore Drive

Physical Address: 80 Northshore Drive

North Sioux City, SD 57049

Phone: (605) 422-3840 • Fax: (605) 422-3847

Staff 8:00 a.m. – 4:00 p.m.
Students 8:10 a.m. – 3:10 p.m.

No child should be on the school grounds or in the building before 7:40 a.m. as there will be no adult supervision until this time. Please do not drop your child off before 7:40 a.m.

If for some reason your child will not be riding the bus, they need to be picked up no later than 5 minutes after the dismissal bell.

SCHOOL SECURITY SYSTEM

ALL EXTERIOR DOORS ARE locked during the school day. Any parents or visitors to the school will need to press the doorbell / camera button located at the MAIN ENTRANCE in order to gain access to the school. The office staff can verify a person's identity before allowing entrance to the building. All visitors must check into the office first.

MIDDLE SCHOOL & UPPER ELEMENTARY

1150 Northshore Drive, North Sioux City, SD 57049

Phone: (605) 422-3830 • MS/UE Fax: (605) 422-3838

Staff 8:00 a.m. – 4:00 p.m.
Students 8:20 a.m. – 3:20 p.m.
Tardy Bell 8:25 a.m. –

(All students must be in their classroom)

DRIVING TO SCHOOL: MIDDLE SCHOOL

Students are not allowed to drive to school. Students may ride bikes to school but must adhere to traffic laws and park bikes in the bike rack. The school is not responsible for lost, stolen, or damaged bikes.

HAVE YOU HAD A CHANGE OF ADDRESS?

Please notify the office of your child's school to update mailing lists.



Lana Gardner
Elementary School
Secretary



Danelle Frank
DVMS/UE Secretary



Candy Moore
Office Secretary

DAKOTA VALLEY HIGH SCHOOL

1150 Northshore Drive • North Sioux City, SD 57049
Phone: (605) 422-3820 • Fax: (605) 422-3827

HOMECOMING ACTIVITIES

| | |
|---------------------|---|
| Monday, Sept. 11 | Coronation – 7:30 p.m. |
| Tuesday, Sept. 12 | Girls Soccer – 5:00 p.m. Volleyball – 5:00 p.m. |
| Wednesday, Sept. 13 | Float building – 6:00-9:00 p.m. |
| Thursday, Sept. 14 | Boys Golf @ EPJ—8:30 a.m. Volleyball @ Canton—5:00 p.m. |
| Friday, Sept. 15 | Homecoming Parade – 1:30 p.m. Football vs. Milbank – 7:00 p.m. |
| Saturday, Sept. 16 | High School Homecoming Dance 8:00 -10:00 p.m. |

SCHEDULE CHANGES – CURRENT DV STUDENTS

| | |
|---------------------|--------------------------|
| Monday, August 7 | – 10:00 a.m. – 3:00 p.m. |
| Tuesday, August 8 | – 8:00 a.m. – 2:00 p.m. |
| Wednesday, August 9 | – 8:00 a.m. – 2:00 p.m. |
| Thursday, August 10 | – 8:00 a.m. – 12:00 p.m. |

ATTENDANCE

If a student is absent, parents should call the school between 8:00 a.m. and 9:00 a.m. to confirm the absence. If no call is received by 9:00 a.m., the school will make every effort to contact a parent/guardian to verify the absence. A written excuse is not necessary when a phone call has been made by the parent/guardian.

"TARDY" POLICY

Students are expected to be through the door of the class-room when the bell sounds. Students who are not in their assigned classrooms will be marked absent. Any student who is tardy for class should report to the office. Students who are late 30 minutes or more will be marked absent. The 3rd and all subsequent tardies will result in detention. The 9th tardy will be cause for possible loss of credit, with possible removal from the class for the rest of the semester.



Carrie Smith
High School Secretary



Tena Carpenter
Activities/Guidance Secretary



Bill Clements, Activities Director

Activities Director, Bill Clements, is responsible for the coordination of school and extracurricular activities for the Dakota Valley School District. Mr. Clements also teaches Physical Education at the high school.

ACTIVITY TICKETS AND PASS

Activity tickets will be available to all Dakota Valley School District students and adults. Activity tickets admit patrons to all home athletic events (except tournaments), all school plays, and assembly programs.

Tickets can be purchased online through Infinite Campus

Activity ticket prices, for the 2023-24 school year, are as follows:

| | |
|------------------------------|-----------|
| **Student (K-12) | \$3.00 |
| **Adults | \$5.00 |
| Double Header: Students | \$4.00 |
| Adults | \$6.00 |
| Season Activity Pass (K-12) | \$30.00 |
| Season Activity Pass (Adult) | \$45.00 |
| Family Season Pass | \$130.00 |
| *Over Age 62 | No Charge |

**Contact the activities department for a golden age pass or a veteran pass.*

ATTENDANCE AT SCHOOL DISTRICT EVENTS

Children in grades K-4 or younger **may not attend** school district events such as sporting events, concerts, plays, etc. unless they are accompanied by an adult.

ATHLETIC PHYSICAL REQUIRED

Students in grades 7-12 are required to have physicals to take part in interscholastic sports. This would include any sport the student may try out for during the year.

The reason for requiring physicals is to ensure that the parents, as well as the coach, have knowledge of potential health problems that could occur under the stress of physical activity.

Physical Date: Wednesday, August 2, 2023

Last name A-M 6:30 - 7:30 p.m. | N-Z 7:30 - 8:30 p.m.

Physicals will be done in the High School Commons - **Cost \$30**

Physicals provided by Heartland Chiropractic who graciously donate all proceeds to the Dakota Valley Athletic Department

MS/HS Fall Sports Parent/Athlete Meeting

The fall sports parent/athlete meeting is scheduled for August 1, 2023 at 7:00 pm in the HS gym. In a continuing effort to improve communication, the activities department will be requiring at least one parent attend this meeting before the athlete will be allowed to begin practice. If a parent is unable to attend this meeting, a special meeting will have to be set up by the parent with the coach and activities director. Information will be sent out if any changes in meeting occur.

SPECIAL SERVICES PROGRAM

SPECIAL EDUCATION

Dakota Valley Schools seeks to provide a continuum of quality special education programming for children, birth through age 21, as determined by the IEP or IFSP team of each individual student. Our mission is to provide a full range of programming and placement options, including early intervention and transition services, required to ensure that all individuals with disabilities are able to achieve maximum independence upon exiting from school.



SECTION 504

In addition to Special Education, Dakota Valley schools seeks to provide supports through Section 504 of the Americans with Disabilities Act, specifically The Rehabilitation Act of 1973. A student may be considered for a 504 Plan if the student 1) has a mental or physical impairment that substantially limits one or more of such person's major life activities including learning; 2) Has a record of such impairment and 3) Is regarded as having such an impairment. Typically, this plan will provide supports through accommodations within the general education setting. A 504 Case Manager oversees the team of staff who support the student.

ENGLISH LANGUAGE LEARNER PROGRAM

Dakota Valley Schools provides additional supports to students who identify as an English Language Learner. Students are identified by answering the following four questions upon enrollment at Dakota Valley:

- What is the language most frequently spoken at home?
- Which language did your child learn when he/she first began to talk?
- What language does your child most frequently speak at home?
- What language do you most frequently speak to your child?

Students receive services through a variety of methods along with accommodations made within the general education classroom.



MEDICAL SERVICES

Nursing services are provided to students who have specific health care needs and for the day to day supports for students who have illnesses or injuries. The certified nurses support our students who have special needs by helping to develop health care plans in conjunction with their IEP or 504 Plan.

DAKOTA VALLEY ADMINISTRATION TEAM



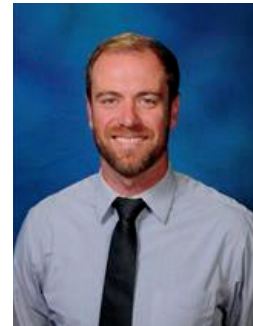
Erik Sommervold
High School Principal



Jeff Hamm
High School Ass't Principal



Nichole Herzog
UE/MS Principal



Ben Blaeser
UE/MS Dean of Students



Kristi Maloney
Elementary Principal



Bill Clements
Activities Director



Michael Oberg
Technology Director



Jill Sponder
Business Manager



Linda Steele
Special Services Director

Mike Brzostowski
Facilities Director

DAKOTA VALLEY BOOSTER CLUB & PTO

ALL ACTIVITIES CAN BE FOUND ON OUR WEBSITE AT:

www.dvschools.com/athletics

IMPORTANT DATES

July 31 Boys & Girls Soccer, Competition Dance
& Cheer Practice Begins
August 1 Parent Athlete Meetings
August 7 Football & Boys Golf Practice Begins
August 10 Volleyball & Cross Country Practice Begins

August 16 First Day of School, Gr. 6-12
August 18 Fall Sports Bash (DV Boosters Meal at 5:00 p.m.,
Scrimmages at 6:00 p.m.)
August 19 Media Day/Team Pictures

It takes an incredible amount of effort to make any project successful. Parents and any other interested members of the community are encouraged to join the Boosters. We welcome your participation at our monthly meetings and we always have a place for you at our events. **The Booster Club meets the 1st Wednesday of each month** at P's Pizza at 8:00 p.m. For information, please email us at DVBoosters@gmail.com or contact us through our web form at www.dvschools.com/parent&guardians.



2023-2024 Booster Club Board

President: Brooke Betsworth | **Vice President:** Angie Klemme
Treasurer: Heather Freeburn | **Secretary:** Brooke Sorenson
Business Membership: ??? | **Individual Membership:** Jessica Hede
Clothing Chairs: Amy Otten, Sheri Kneib
State Giftbags & Tailgates: Michele Boonstra
Music Boosters Chair: Becca Bryan | **Board Members At-Large:** Shelly Kleis

The Booster Club strives to fund not only the reoccurring needs of the school but also larger projects and capital improvements pertaining to extra-curricular activities!

DAKOTA VALLEY PTO

2023-2024 PTO Officers:

President - Heather Nelson

Vice President - Lacey Storm

Co-Secretaries - Jammie Geels & Amy Bomgaars

Co-Treasurers - Sara Loe & Kim Meyer

Board Members at Large - Amy Daniels, Stephanie Monk

How do I Join?

We will have a table set up at the schools during Open House. In addition, we will send membership forms home with kids the first few days of school or you may register online: www.dakotavalleypto.com. The cost is \$15.00, which includes a school directory. Additional directories may be purchased for \$10.00 each.



The PTO meetings are scheduled as follows:

Continue to follow the 2nd Tuesday of every month

| | | |
|-----------------------------|----------------------------|------------------|
| Aug. 29 - 2:00 p.m. | Dec. 12 - 2:00 p.m. | April 9 - |
| Sept. 12 - 7:00 p.m. | Jan. 9 - | May 14 - |
| Oct. 10 - 2:00 p.m. | Feb. 13 - | |
| Nov. 14 - 7:00 p.m. | March 12 - | |

Future Meeting Dates

- Every 2nd Tuesday unless it falls on a holiday week.
- 1st meeting will be Tuesday, Aug 29.
- Alternate 2 p.m. and 7 p.m. for first semester, then reassess based on attendance.

TO REACH OUT TO US:

PTO facebook page

<https://www.facebook.com/groups/dvpto/>

or Email:

dakotavalleypto2014@yahoo.com

DAKOTA VALLEY SCHOOL DISTRICT

LUNCH PROGRAM

Welcome Back!

We look forward to the coming school year as the district has again contracted with Lunchtime Solutions to manage the food service program. We encourage parents to join us for breakfast or lunch anytime during the school year. Feedback from students and parents is an important component of our program. If you have questions, comments or concerns, please call the Dakota Valley Food Service Director at 422-3810.

School Breakfast

Breakfast will be available in the dining area (before school) at the elementary, middle school and high school. Please encourage your student to eat breakfast, either at home or school. Numerous studies have shown the importance of eating a healthy breakfast as proper nutrition in the morning allows young minds to concentrate on learning!

School Lunch

School lunch will offer a wide variety of entrée choices at both serving locations. Elementary students will be offered two choices daily as well as various fruits, vegetables and salads. Middle and High School students may choose from any of the entrée choices as well as various fruits, vegetables, salads, and milk. Students may purchase additional entrees (ala carte) at additional cost.

Charging Policy

Meal Charge Policy. The district will notify students and their families of the policy for Charged Meals, meaning meals received by a student when the student does not have money in hand or in his or her food account. This policy applies to students who receive meals at the free, reduced, or full rates. Notice of this policy must be provided in writing to all households at the start of each school year and to households that transfer to the school during the school year. Notice may be provided through the student handbook, student registration materials, online portal used to access student accounts, direct mailing or e-mail, newsletter, the district website, and/or any other appropriate means. Notice of this policy will also be provided all school staff responsible for the enforcement of it, including food service professionals responsible for collecting payment for meals at the point of service, staff involved in notifying families of low or negative balances, and other staff involved in enforcing any aspect of this policy. The district will not allow students who have no funds available to purchase any "ala carte" items. The district will continue to provide meals to students until the student accrues a negative balance of one hundred dollars. If a student repeatedly lacks funds to purchase a meal, has not brought a meal from home, and is not enrolled in a free meal program, the district will use its resources and contacts to protect the health and safety of the student. Failure or refusal of parents or guardians to provide meals for students may require mandatory reporting to child protection agencies as required by law.

Student Accounts

Each student will have his/her own account which operates on a debit system. Because we receive an overwhelming number of deposits the first day of school, ***we strongly encourage parents to make deposits prior to the start of the school year.*** Our new online payment options through Infinite Campus (credit card or bank draft) are available 24 hours a day, 7 days a week. If you write a personal check, please write your student(s) name(s) or ID number(s)

in the memo line. Payments may be sent to: Dakota Valley School Lunch, 1150 Northshore Drive, North Sioux City, SD 57049. If you prefer to send cash with your student(s), please seal in an envelope and write your student's name(s) on the outside. Neither the school district, nor Lunchtime Solutions are responsible for lost, unidentified, or stolen cash. Deposits during the school year should be turned in by 9:00 am at your child's school office to receive credit that same day.

Free or Reduced Meal Applications

Free or reduced meal applications may be submitted at any time during the school year. If your student(s) were eligible for free or reduced price meals at the end of the 2022-23 school year, you will be granted a grace period to re-apply until Wednesday, September 29, 2023. **Households must re-apply each year for meal benefits.** If a qualifying application is not received on or before the end of the grace period, the student's meal account will be changed to "paying" status. If you have questions regarding eligibility, please contact Marcela Dietrich, Admin. Assistant, Marcela.Dietrich@k12.sd.us. Applications are available in all school offices or may be downloaded from the school website from the Child Nutrition webpage.

Income Eligibility Guidelines

(Effective July 1, 2023 through June 30, 2023)

The income scales below are to be used to determine applicant's eligibility for free or reduced-price meals if the family is at or below the guideline.

| Household Size | Annually | Annually | Monthly | Monthly | 2x Month | 2x Month | Every 2 Weeks | Every 2 Weeks | Weekly | Weekly |
|--|----------|----------|---------|---------|----------|----------|---------------|---------------|---------|---------|
| | Free | Reduced | Free | Reduced | Free | Reduced | Free | Reduced | Free | Reduced |
| 1 | \$18,954 | \$26,973 | \$1,580 | \$2,248 | \$790 | \$1,124 | \$729 | \$1,038 | \$365 | \$519 |
| 2 | \$25,636 | \$36,482 | \$2,137 | \$3,041 | \$1,069 | \$1,521 | \$986 | \$1,404 | \$493 | \$702 |
| 3 | \$32,318 | \$45,991 | \$2,694 | \$3,833 | \$1,347 | \$1,917 | \$1,243 | \$1,769 | \$622 | \$885 |
| 4 | \$39,000 | \$55,500 | \$3,250 | \$4,625 | \$1,625 | \$2,313 | \$1,500 | \$2,135 | \$750 | \$1,068 |
| 5 | \$45,682 | \$65,009 | \$3,807 | \$5,418 | \$1,904 | \$2,709 | \$1,757 | \$2,501 | \$879 | \$1,251 |
| 6 | \$52,364 | \$74,518 | \$4,364 | \$6,210 | \$2,182 | \$3,105 | \$2,014 | \$2,867 | \$1,007 | \$1,434 |
| 7 | \$59,046 | \$84,027 | \$4,921 | \$7,003 | \$2,461 | \$3,502 | \$2,271 | \$3,232 | \$1,136 | \$1,616 |
| 8 | \$65,728 | \$93,536 | \$5,478 | \$7,795 | \$2,739 | \$3,898 | \$2,528 | \$3,598 | \$1,264 | \$1,799 |
| For each additional family member, add | \$6,682 | \$9,509 | \$557 | \$793 | \$279 | \$397 | \$257 | \$366 | \$129 | \$183 |

2023-24 Anticipated Pricing

| | Paid | Reduced Price |
|---------------------|--------|---------------|
| Breakfast (K-3) | \$1.45 | Free |
| Breakfast (4-12) | \$1.45 | Free |
| Visitor Breakfast | \$2.26 | |
| Lunch K-3 | \$2.80 | \$.40 |
| Lunch 4-12 | \$2.90 | \$.40 |
| Visitor Lunch | \$4.85 | |
| Extra Lunch Entrée | \$2.05 | \$2.05 |
| Extra Branded Pizza | \$2.10 | \$2.10 |
| Extra Milk | \$0.50 | \$0.50 |

Dakota Valley School District School Calendar 2023-2024

| August 2023 | | | | | | |
|-------------|----|----|----|----|----|----|
| S | M | T | W | TH | F | S |
| | | 1 | 2 | 3 | 4 | 5 |
| 6 | 7 | 8 | 9 | 10 | 11 | 12 |
| 13 | 14 | 15 | 16 | 17 | 18 | 19 |
| 20 | 21 | 22 | 23 | 24 | 25 | 26 |
| 27 | 28 | 29 | 30 | 31 | | |

Aug. 14-15: Staff Inservice S=12; T=14
 Aug. 15: District Open House 5:30-7:00
 Aug. 16: First Day for Grades 6-12
 Aug. 16-17: Grades JK-5 Conferences/Assessment
 Aug. 18: First Day for Grades JK-5

| September 2023 | | | | | | |
|----------------|----|----|----|----|----|----|
| S | M | T | W | TH | F | S |
| | | | | | 1 | 2 |
| 3 | 4 | 5 | 6 | 7 | 8 | 9 |
| 10 | 11 | 12 | 13 | 14 | 15 | 16 |
| 17 | 18 | 19 | 20 | 21 | 22 | 23 |
| 24 | 25 | 26 | 27 | 28 | 29 | 30 |

Sept. 4: No School, Labor Day S=20; T=20
 Sept. 11: 1:30 District Dismissal (In-Service)
 Sept. 15: Homecoming 12:30 pm dismissal

| October 2023 | | | | | | |
|--------------|----|----|----|----|----|----|
| S | M | T | W | TH | F | S |
| 1 | 2 | 3 | 4 | 5 | 6 | 7 |
| 8 | 9 | 10 | 11 | 12 | 13 | 14 |
| 15 | 16 | 17 | 18 | 19 | 20 | 21 |
| 22 | 23 | 24 | 25 | 26 | 27 | 28 |
| 29 | 30 | 31 | | | | |

Oct. 2: 1:30 District Dismissal (In-Service) S=20; T=22
 Oct. 13: End of 1st Quarter (42 days)
 Oct. 17: District P/T Conferences 4:00-6:00 pm
 Oct. 18: 1:30 District Dismissal; P/T Conferences 2:30-8:00
 Oct. 19: No School; P/T Conferences 8:00-12:00;
 PD 1:00-4:00
 Oct. 20: No School

| November 2023 | | | | | | |
|---------------|----|----|----|----|----|----|
| S | M | T | W | TH | F | S |
| | | | 1 | 2 | 3 | 4 |
| 5 | 6 | 7 | 8 | 9 | 10 | 11 |
| 12 | 13 | 14 | 15 | 16 | 17 | 18 |
| 19 | 20 | 21 | 22 | 23 | 24 | 25 |
| 26 | 27 | 28 | 29 | 30 | | |

Nov. 6: 1:30 District Dismissal (In-Service) S=19; T=19
 Nov. 22-24: No School; Thanksgiving Break

| December 2023 | | | | | | |
|---------------|----|----|----|----|----|----|
| S | M | T | W | TH | F | S |
| | | | | | 1 | 2 |
| 3 | 4 | 5 | 6 | 7 | 8 | 9 |
| 10 | 11 | 12 | 13 | 14 | 15 | 16 |
| 17 | 18 | 19 | 20 | 21 | 22 | 23 |
| 24 | 25 | 26 | 27 | 28 | 29 | 30 |
| 31 | | | | | | |

Dec. 4: 1:30 District Dismissal (In-Service) S=16; T=16
 Dec. 22: 1:30 District Dismissal; End of 2nd Qtr. (45 days)
 Dec. 25-29: Winter Break

Board Approved: 02.14.22

| January 2024 | | | | | | |
|--------------|----|----|----|----|----|----|
| S | M | T | W | TH | F | S |
| | 1 | 2 | 3 | 4 | 5 | 6 |
| 7 | 8 | 9 | 10 | 11 | 12 | 13 |
| 14 | 15 | 16 | 17 | 18 | 19 | 20 |
| 21 | 22 | 23 | 24 | 25 | 26 | 27 |
| 28 | 29 | 30 | 31 | | | |

Jan. 1-2: No School S=20; T=21
 Jan. 3: Inservice (1/2 PD, 1/2 Workday)
 Jan. 4: First Student Day

| February 2024 | | | | | | |
|---------------|----|----|----|----|----|----|
| S | M | T | W | TH | F | S |
| | | | | 1 | 2 | 3 |
| 4 | 5 | 6 | 7 | 8 | 9 | 10 |
| 11 | 12 | 13 | 14 | 15 | 16 | 17 |
| 18 | 19 | 20 | 21 | 22 | 23 | 24 |
| 25 | 26 | 27 | 28 | 29 | | |

Feb. 5: 1:30 District Dismissal (In-Service) S=18; T=20
 Feb. 13: P/T Conferences 4:00-6:00
 Feb. 14: 1:30 District Dismissal; P/T Conferences 2:30-8:00
 Feb. 15: No School: Conferences 8:00-12:00; PD 1:00-4:00
 Feb. 16-19: No School

| March 2024 | | | | | | |
|------------|----|----|----|----|----|----|
| S | M | T | W | TH | F | S |
| | | | | | 1 | 2 |
| 3 | 4 | 5 | 6 | 7 | 8 | 9 |
| 10 | 11 | 12 | 13 | 14 | 15 | 16 |
| 17 | 18 | 19 | 20 | 21 | 22 | 23 |
| 24 | 25 | 26 | 27 | 28 | 29 | 30 |
| 31 | | | | | | |

Mar. 4: 1:30 District Dismissal (In-Service) S=19; T=19
 Mar. 8: End of 3rd Qtr. (43 days)
 Mar. 28-29: No School

| April 2024 | | | | | | |
|------------|----|----|----|----|----|----|
| S | M | T | W | TH | F | S |
| | 1 | 2 | 3 | 4 | 5 | 6 |
| 7 | 8 | 9 | 10 | 11 | 12 | 13 |
| 14 | 15 | 16 | 17 | 18 | 19 | 20 |
| 21 | 22 | 23 | 24 | 25 | 26 | 27 |
| 28 | 29 | 30 | | | | |

Apr. 1: No School S=21; T=21
 Apr. 8: 1:30 District Dismissal (In-Service)

| May 2024 | | | | | | |
|----------|----|----|----|----|----|----|
| S | M | T | W | TH | F | S |
| | | | 1 | 2 | 3 | 4 |
| 5 | 6 | 7 | 8 | 9 | 10 | 11 |
| 12 | 13 | 14 | 15 | 16 | 17 | 18 |
| 19 | 20 | 21 | 22 | 23 | 24 | 25 |
| 26 | 27 | 28 | 29 | 30 | 31 | |

May 11: Graduation S=11; T=12
 May 15: Last Day of School; District 1:30 Dismissal
 May 15: End of 4th Qtr. (46 days)
 May 16: In-Service

Note: All days missed due to inclement weather may be added to the end of the calendar.

DAKOTA VALLEY SCHOOL BUS ROUTES

Bus 15 | Blue Boat

| | APPROX. AM TIME / PM TIME | |
|------------------------------------|------------------------------|------|
| W. Pinehurst Trail | 7:15 | 3:25 |
| Monterey Trail | 7:17 | 3:27 |
| W. Sawgrass Trail | 7:19 | 3:29 |
| Firethorn Trail & Arrowhead | 7:22 | 3:33 |
| Indian Wells Court | 7:23 | 3:35 |
| Crooked Tree Lane | 7:24 | 3:36 |
| Augusta Circle | 7:27 | 3:37 |
| Inverness Trail | 7:28 | 3:38 |
| E. Sawgrass | 7:29 | 3:39 |
| Riviera Circle | 7:30 | 3:40 |
| N. Royal Troon | 7:31 | 3:41 |
| Pebble Beach | 7:32 | 3:42 |
| Deerfield Circle | 7:33 | 3:43 |
| Bayhill Circle | 7:34 | 3:44 |
| Spanish Bay | 7:35 | 3:45 |
| N. Spanish Bay | 7:36 | 3:46 |
| Olympic Court | 7:37 | 3:47 |
| LaQuinta Court | 7:38 | 3:48 |
| Itasca Court | 7:39 | 3:49 |
| E. Pinehurst Trail | 7:40 | 3:50 |
| Champions Court | 7:41 | 3:51 |
| La Costa Court | 7:42 | 3:52 |
| Doral & Teton Pines & Saddle Court | 7:43 | 3:53 |

Bus 31 | 4th-12th

| | | |
|-----------------------------------|------|------|
| Cottonwood | 7:33 | 3:35 |
| S. Derby Lane | 7:36 | 3:38 |
| Campbell Street & Wildflower Bend | 7:35 | 3:40 |
| Campbell Street & Harvest Bend | 7:37 | 3:41 |
| Marie (Story Time) | 7:39 | 3:43 |
| Riverside Lane | 7:40 | 3:44 |
| Merrill Ave. | 7:41 | 3:45 |
| Melrose Ave. | 7:42 | 3:46 |
| Parkside | 7:43 | 3:47 |
| Victor | 7:44 | 3:48 |
| Wallac | 7:46 | 3:50 |
| Maine | 7:47 | 3:51 |
| Ross | 7:45 | 3:49 |
| Lloyd Street | 7:48 | 3:52 |
| Loius | 7:49 | 3:53 |
| Centennial Drive | 7:52 | 3:56 |
| N. Main | 7:55 | 3:59 |
| Leneve Street | 7:56 | 4:00 |
| Dellar | 7:57 | 4:01 |
| Verna Street | 7:58 | 4:02 |
| N. Hwy 105 | 8:00 | 4:04 |

Bus 33 | Rainbow

| | | |
|------------------------------------|------|------|
| Quinnella Drive (Rivervalley Apt.) | 7:13 | 3:20 |
| Riverland Estates (Sign) | 7:18 | 3:48 |
| Prairie Passage | 7:19 | 3:49 |
| Tumbleweed | 7:20 | 3:50 |
| N. Shay Road | 7:24 | 3:44 |
| Tower Road | 7:25 | 3:25 |
| Prodigy Sioux Point Road #200 | 7:27 | 3:40 |
| Levee Trail | 7:31 | 3:35 |
| Oxbow Trail | 7:32 | 3:36 |
| Sagebrush Pass | 7:33 | 3:37 |
| Fawn Hollow | 7:34 | 3:38 |
| Sandstone Circle | 7:35 | 3:40 |
| Bluestem Trail | 7:36 | 3:39 |
| Meadows Blvd. | 7:37 | 3:33 |
| Windflower Bend | 7:38 | 3:34 |
| Prairie Bend | 7:39 | 3:32 |
| Wellington Apts. | 7:42 | 3:29 |

Bus 34 | 4th-12th

| | | |
|----------------------------------|------|------|
| River Valley Apts. | 7:33 | 3:35 |
| Prodigy | 7:35 | 3:35 |
| Praire Blvd. & Bobwhite Circle | 7:38 | 3:40 |
| Praire Blvd. & Partridge Circle | 7:39 | 3:40 |
| Praire Blvd. & Eagle Circle | 7:40 | 3:41 |
| Praire Blvd. & Fox Circle | 7:42 | 3:42 |
| Praire Blvd. & Hawk Circle | 7:43 | 3:43 |
| Praire Blvd. & Meadowlark Circle | 7:44 | 3:45 |
| Bison & White Tail Place | 7:46 | 3:49 |
| Sterling Green Apts. | 7:48 | 3:55 |
| Wellington Apts. | 7:50 | 3:40 |

Bus 35 | Red Apple

| | APPROX. AM TIME / PM TIME | |
|-------------------------|------------------------------|------|
| Lakeshore Estates | 7:27 | 3:42 |
| Lakeview | 7:30 | 3:55 |
| North Lake Apts. | 7:35 | 3:59 |
| Wycoff Drive & Streeter | 7:40 | 3:31 |
| McCook Apts. | 7:41 | 3:32 |
| Bancroft Court | 7:42 | 3:33 |
| Union Court | 7:43 | 3:34 |
| Alcoma | 7:44 | 3:35 |
| Lakeshore Trailer Court | 7:45 | 3:36 |
| Prairiewood Apts. | 7:46 | 3:37 |
| Gatewood Apts. | 7:47 | 3:38 |
| Westshore Drive | 7:48 | 3:24 |
| Martha | 7:48 | 3:23 |
| Suncoast Drive | 7:50 | 3:24 |
| Evergreen Drive | 7:55 | 3:27 |
| Spruce Ave. | 7:57 | 3:25 |

Bus 36 | Pink Heart

| | | |
|-------------------------------------|------|------|
| Prairie Blvd. & Bobwhite Circle | 7:14 | 3:30 |
| Prairie Blvd. & Partridge Circle | 7:15 | 3:31 |
| Prairie Blvd. & Eagle Circle | 7:16 | 3:32 |
| Prairie Blvd. & Fox Circle | 7:17 | 3:33 |
| Prairie Blvd. & Hawk Circle | 7:18 | 3:34 |
| Prairie Blvd. & Meadowlark Circle | 7:19 | 3:35 |
| Prairie Blvd. | 7:20 | 3:36 |
| Whitetail Place | 7:24 | 3:38 |
| Bison Trail | 7:25 | 3:39 |
| Cottonwood Lane | 7:28 | 3:42 |
| S. Derby Lane (Trailer Court) | 7:29 | 3:43 |
| Campbell Street & Wildflower Bend | 7:30 | 3:44 |
| Campbell Street & Harvest Bend | 7:31 | 3:45 |
| Main Street (Story Time) | 7:33 | 3:46 |
| Melrose Street (Tiny Toons Daycare) | 7:34 | 3:47 |
| Lloyd Ave. | 7:35 | 3:49 |
| Rose | 7:36 | 3:50 |
| Victor | 7:37 | 3:51 |
| Wallace Ave. | 7:40 | 3:52 |
| Leneve Street | 7:42 | 3:53 |
| N. Main Street | 7:44 | 3:55 |
| Centennial Drive Apts | 7:46 | 3:57 |
| Military Road | 7:50 | 3:59 |
| Hwy 105 | 7:48 | 4:01 |

Bus 37 | 4th-12th

| | | |
|------------------------|------|------|
| Riverland Estates Sign | 7:35 | 3:35 |
| Prairie Passage | 7:36 | 3:37 |
| Tumbleweed Trail | 7:37 | 3:38 |
| N. Shay Road | 7:41 | 3:40 |
| Tower Road | 7:42 | 3:42 |
| Prairie Blvd. | 7:46 | 3:47 |
| Meadows Bend | 7:47 | 3:47 |
| Oxbow Trail | 7:48 | 3:47 |
| Sagebrush | 7:49 | 3:47 |
| Fawn Hollow | 7:50 | 3:47 |
| Sandstone Circle | 7:51 | 3:53 |
| Bluestem Trail | 7:52 | 3:50 |
| Windflower | 7:53 | 3:42 |

Bus 38 | Green Frog K-12

| | | |
|-------------------|------|------|
| Northshore Drive | 7:13 | 3:30 |
| 480th Avenue | 7:18 | 3:57 |
| Wynstone Drive | 7:28 | 3:49 |
| Pinewood Park | 7:26 | 3:33 |
| Brookside Drive | 7:37 | 3:36 |
| Fieldstone Court | 7:39 | 3:38 |
| Red Cedar Court | 7:41 | 3:40 |
| Birchwood Court | 7:43 | 3:42 |
| Willowbrook Court | 7:45 | 3:44 |
| Hiddenwood Hollow | 7:36 | 3:48 |

Bus 41 | Orange Crayon K-12

| | APPROX. AM TIME / PM TIME | |
|---------------------------|------------------------------|------|
| 33184 484th | 7:15 | 3:50 |
| St. Petersburg | 7:25 | 3:57 |
| Main Street & W. Dakota | 7:26 | 3:58 |
| 5th & Division Street | 7:28 | 4:00 |
| 6th & Division Street | 7:29 | 4:00 |
| 482th 33119 | 7:33 | 4:05 |
| 332nd 48230 | 7:38 | 4:00 |
| Wycoff & Streeter | 7:49 | 3:32 |
| McCook | 7:45 | 3:33 |
| Bancroft Court & Streeter | 7:46 | 3:34 |
| Union Court & Streeter | 7:47 | 3:35 |
| Gatewood | 7:48 | 3:36 |
| Cotts Trailer | 7:50 | 3:38 |
| Churchhill Circle | 7:53 | 3:41 |
| Belmont Park Ave. | 7:55 | 3:43 |
| YMCA Drop | | 3:30 |

Bus 42 | 4th-12th

| | | |
|-------------------------------------|------|------|
| Lakeview Drive | 7:16 | 3:56 |
| Lakeview Court | 7:20 | 3:57 |
| Lakeshore Drive & Lakeview Place | 7:22 | 3:58 |
| Lakeshore Drive & Dexter Street | 7:25 | 4:00 |
| McCook Lake Apts. | 7:27 | 3:53 |
| Brookside Drive | 7:39 | 3:32 |
| Brookside Drive & Field Stone Court | 7:40 | 3:31 |
| Brookside Drive & Red Cedar Court | 7:44 | 3:35 |
| Brookside Drive & Birchwood Court | 7:46 | 3:37 |
| Brookside Drive & Willowbrook Court | 7:49 | 3:40 |
| Westshore Drive | 7:55 | 3:48 |
| Prairiewood Apts. | 8:01 | 3:54 |
| Shamrock Road | 8:02 | 4:13 |

Bus 43 | 4th-12th

| | | |
|-----------------------|------|------|
| Augusta Circle | 7:29 | 3:30 |
| Iverness Trail | 7:30 | 3:31 |
| E. Sawgrass Trail | 7:31 | 3:32 |
| Riviera Circle | 7:32 | 3:33 |
| E. St. Andrews Circle | 7:35 | 3:36 |
| N. Royal Troon | 7:38 | 3:39 |
| Glen Eagle | 7:39 | 3:40 |
| Murfield Court | 7:40 | 3:41 |
| S. Royal Troon | 7:41 | 3:42 |
| Pebble Beach Drive | 7:42 | 3:43 |
| Deerfield Circle | 7:44 | 3:45 |
| Bay Hill Circle | 7:45 | 3:46 |
| Spanish Bay | 7:47 | 3:48 |
| E. Sawgrass Trail | 7:48 | 3:49 |
| Olympic Court | 7:49 | 3:50 |
| LaQuinta Court | 7:50 | 3:51 |
| Itasca Court | 7:51 | 3:52 |
| E. Pinehurst Trail | 7:53 | 3:54 |
| La Costa Lane | 7:54 | 3:55 |
| Champions | 7:55 | 3:55 |
| Doral Lane | 7:56 | 3:56 |
| Saddlebrook Court | 7:56 | 3:56 |
| Teton Pines Court | | |

Bus 53 | 4th-12th

| | | |
|----------------------|------|------|
| 303 Apts. | 7:24 | 3:35 |
| West Pinehurst Trail | 7:26 | 3:53 |
| Monterey Trail | 7:29 | 3:56 |
| Firethorn Trail | 7:32 | 4:01 |
| Arrowhead Court | 7:33 | 4:02 |
| West Sawgrass Trail | 7:35 | 3:58 |
| Quail Hollow Circle | 7:37 | 4:09 |
| Indian Wells Court | 7:38 | 4:05 |
| Dakota Dunes | 7:39 | 3:37 |
| Levee Trail | 7:42 | 3:39 |
| Oxbow Trail | 7:43 | 3:40 |
| Sage Brush Pass | 7:44 | 3:41 |
| Fawn Hollow | 7:45 | 3:45 |

To request bus service or make a change for the 23-24 year, visit the Transportation webpage on the district website and complete the online form. Valerie Trudell, 605-540-0566, Transportation Director.

THESE ARE APPROXIMATE TIMES AND MAY CHANGE!

ANNUAL PUBLIC NOTICES

COMPLAINT POLICY

Pursuant to federal and state law, the Dakota Valley School District is publishing this notice to inform the public that we do have a district-wide Public Concern and Complaint Policy. Persons wishing to submit official concerns or complaints relating to the school district policies, personnel, programs or instructional materials should begin at the level closest to the source of the complaint. For a copy of this policy, contact Superintendent of Schools, 1150 Northshore Drive, North Sioux City, SD 57049 or call (605) 422-3800.

HOMELESS STUDENTS POLICY

Dakota Valley School District shall make reasonable efforts to identify homeless children within the School District, ensure their immediate enrollment, provide them with comparable services offered to other students in the district, and eliminate barriers to their educational instruction/programs in compliance with all applicable federal and state laws. No child or youth in the public school shall be discriminated against or stigmatized because of homelessness. For a copy of this policy, contact Superintendent of Schools, 1150 Northshore Drive, North Sioux City, SD 57049 or call (605) 422-3800.

ASBESTOS CONTAINING MATERIALS

In compliance with the US Environmental Protection Agency (EPA) Asbestos Hazard Emergency Response Act (AHERA), in the fall of 1988 we performed inspections of our school buildings for asbestos-containing building materials. The inspection finding and asbestos management plans have been on file in the school administrative office since that time.

The EPA requires us to perform reinspections of the asbestos materials every three years. There has been no significant changes in condition of the remaining asbestos.

The results of the reinspection are on file in the Management Plan in the school administrative office. Everyone is welcome to view these anytime during normal school hours (M-F from 8:30 a.m. to 4:00 p.m.).

We are intent on not only complying with, but also exceeding, federal, state, and local regulations in this area. We plan on taking whatever steps necessary to ensure your children and our employees have a safe and healthy environment in which to learn and work.

ESEA/ESSA PARENTS RIGHT -TO- KNOW

The federal education law called the Elementary and Secondary Education Act requires that all parents/guardians who have children attending a Title I school, which in the Dakota Valley School District only includes the Elementary School, to be notified of their right to request information about the professional qualifications of classroom teachers and paraprofessionals instructing their child. If you are interested in receiving this information, please send your request to the elementary principal who will provide a timely response.

Title I Reading

Reading intervention for students in grades one through three is provided through Title I funding. This initiative is designed to help provide an accelerated, high quality curriculum for children at risk of not meeting both the South Dakota and Dakota Valley School District's academic achievement standards. Students receiving Title I services for reading are provided intervention beyond general classroom instruction. The core program used to fill this need is Reading Recovery for students in first grade. Caregiver involvement in the Reading Recovery program is critical for student success, and, parents/guardians of students who qualify for services are involved in the decision-making process from the beginning and are contacted directly, and communicated with consistently, by the Reading Recovery instructor who will be working with their child.

As required by the Office of Civil Rights, the district is listing its Career and Technical Programs at the high school level. The program areas include the following:

- Introduction to Drafting
- Mechanical Drawing and 3D Modeling
- Woods I, Woods II, Woods III
- Culinary Arts I and Culinary Arts II
- Food and Nutrition
- Fashion Design
- Child Development
- Welding and Advanced Welding
- Careers and Entrepreneurship
- Audiovisual Design
- Computer Programing and Web Publishing
- Robotics and Advanced Robotics
- Mobile Apps and Video Game Design
- Internship

NONDISCRIMINATION & EQUAL OPPORTUNITY NOTICE

The Dakota Valley School District does not discriminate in its policies and programs on the basis of sex, or sexual orientation, race, color, age, religion, disabilities, or national origin.

Inquiries concerning the application of Section 504 of the Rehabilitation Act, Title VI of the Civil Rights Act and the American with Disabilities Act should be brought to the attention of: the Special Services Director, 1150 Northshore Drive, North Sioux City, SD 57049 or by phone at (605) 422-3800.

Inquiries concerning the application of Title IX, and School Food Services should be brought to the attention of: the Superintendent of Schools, 1150 Northshore Drive, North Sioux City, SD 57049 or by phone at (605) 422-3800.

To file a complaint regarding Section 504, Title VI or Title IX, please contact the Regional Office for Civil Rights, write to the U.S. Department of Education, Office of Civil Rights, One Petticoat Lane, 1010 Walnut Street, 3rd Floor, Suite 320, Kansas City Missouri 64106. You may also call (816) 268-0550 or TDD to (800) 877-8339 or fax to (816) 268-0599.

To file a complaint of discrimination in regard to school food service, write USDA, Director, Office of Civil Rights, 1400 Independence Avenue, S.W., Washington, D.C. 20250-9410, or call (800) 795-3272 (voice) or (202) 720-6382 (TTY). USDA is an equal opportunity provider and employer.



Non-Profit Organization
U.S. Postage
PAID
No. Sioux City,
SD 57049
Permit No. 14

Local Postal Customer