

Monomoy Regional High School Building Committee Public Forum



Building Our Future Together...



May 3, 2012 – Chatham Town Hall Annex

Building Our Future Together...



- *Agenda*

- Building Committee Progress Update
- Monomoy Design
- Community Input

Building Committee Progress Update



- Regional Building Committee
 - ✦ Bi-weekly Committee meetings
 - ✦ Weekly Steering Committee meetings
 - ✦ Site, design, communication, and program subcommittee meetings
 - ✦ (4) Public Forums
- Skanska USA Building (Owner's Project Manager)
 - ✦ MSBA process
 - ✦ Coordination of site and building investigations
 - ✦ Oversight

Building Committee Progress Update



- Mount Vernon Group Architects
 - ✦ Visioning Sessions
 - ✦ Developed site and building designs
- Administration, Faculty, and Staff
 - ✦ Educational Plan
 - ✦ Design feedback
 - ✦ MSBA
- MA School Building Authority (MSBA)
 - ✦ Review, advice, submission feedback

What are the Key Milestone Dates?



- **5/25:** Schematic Design Documents Available – Start Cost Estimate Process
- **6/07:** Project Scope and Budget Documents submitted to MSBA (without budget info)
- **6/21:** Submit Cost Estimates & Project Budget to MSBA
- **TBD:** MSBA Project Scope and Budget Meeting
- **7/25:** MSBA-Board of Directors Meeting – Approval of Project Scope and Budget
- **8/08:** Regional School Committee Vote to Incur Debt
- **8/27:** Chatham Town Meeting (proposed)
- **8/28-29:** Harwich Town Meeting (proposed)
- **9/06:** Harwich & Chatham Ballot Votes (proposed)

What is the Anticipated Project Schedule?



2012

January	February	March	April	May	June	July	August	September	October	November	December
Establish Project Team	Initial Design Program		Schematic Design & Estimates		Project Scope and Budget Submission			Ballot Votes	Develop Construction Documents		
							MSBA BoD Meeting	Town Meetings			

2013

January	February	March	April	May	June	July	August	September	October	November	December
Bidding	Construction										

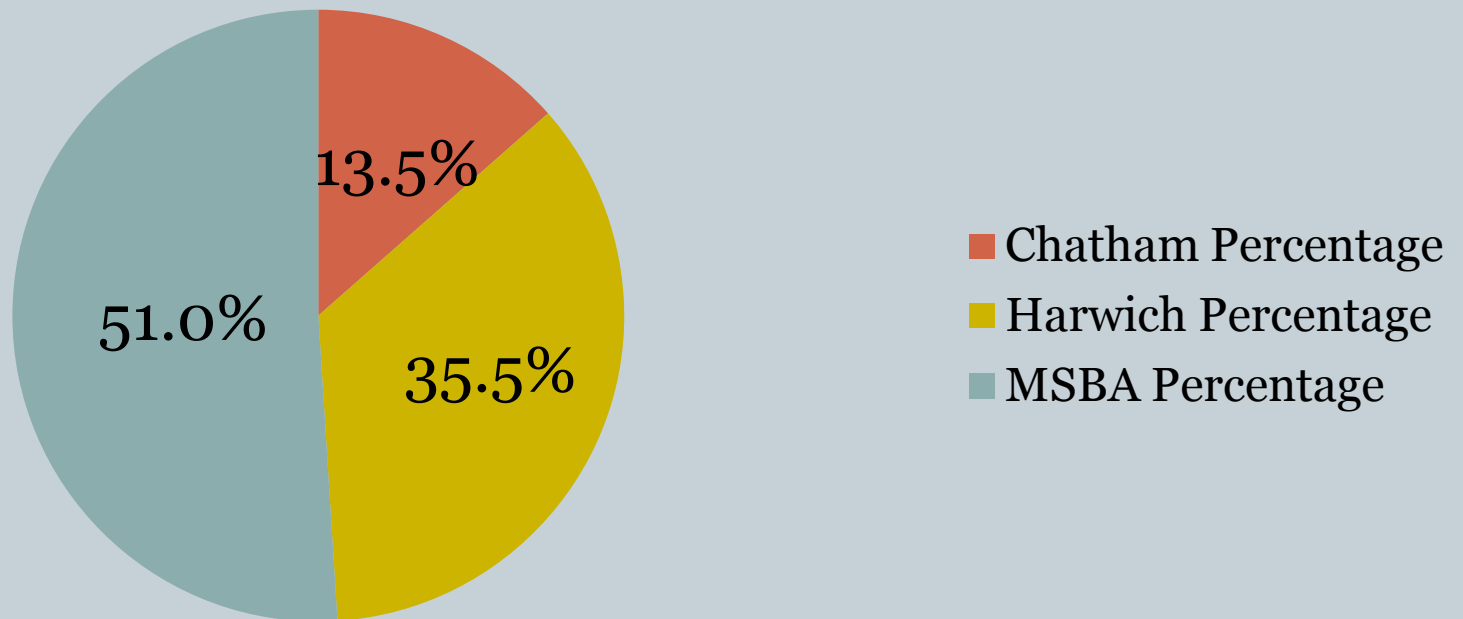
2014

January	February	March	April	May	June	July	August	September	October	November	December
Construction								School Opening			
								Demolition & Field Development			

How was the MSBA Reimbursement Rate determined?



Total Project Budget of Eligible Costs



8-12 Enrollment



- 700 students needed to qualify for MSBA Model School
- 8-12 Grade Structure
- MSBA Enrollment Data and Projections:

Year	Students		Year	Students
2012	676		2019	699
2013	668		2020	698
2014	688		2021	694
2015	704		2022	686
2016	698		2023	679
2017	724		2024	676
2018	713		2025	670

Why Build the New Monomoy RHS?



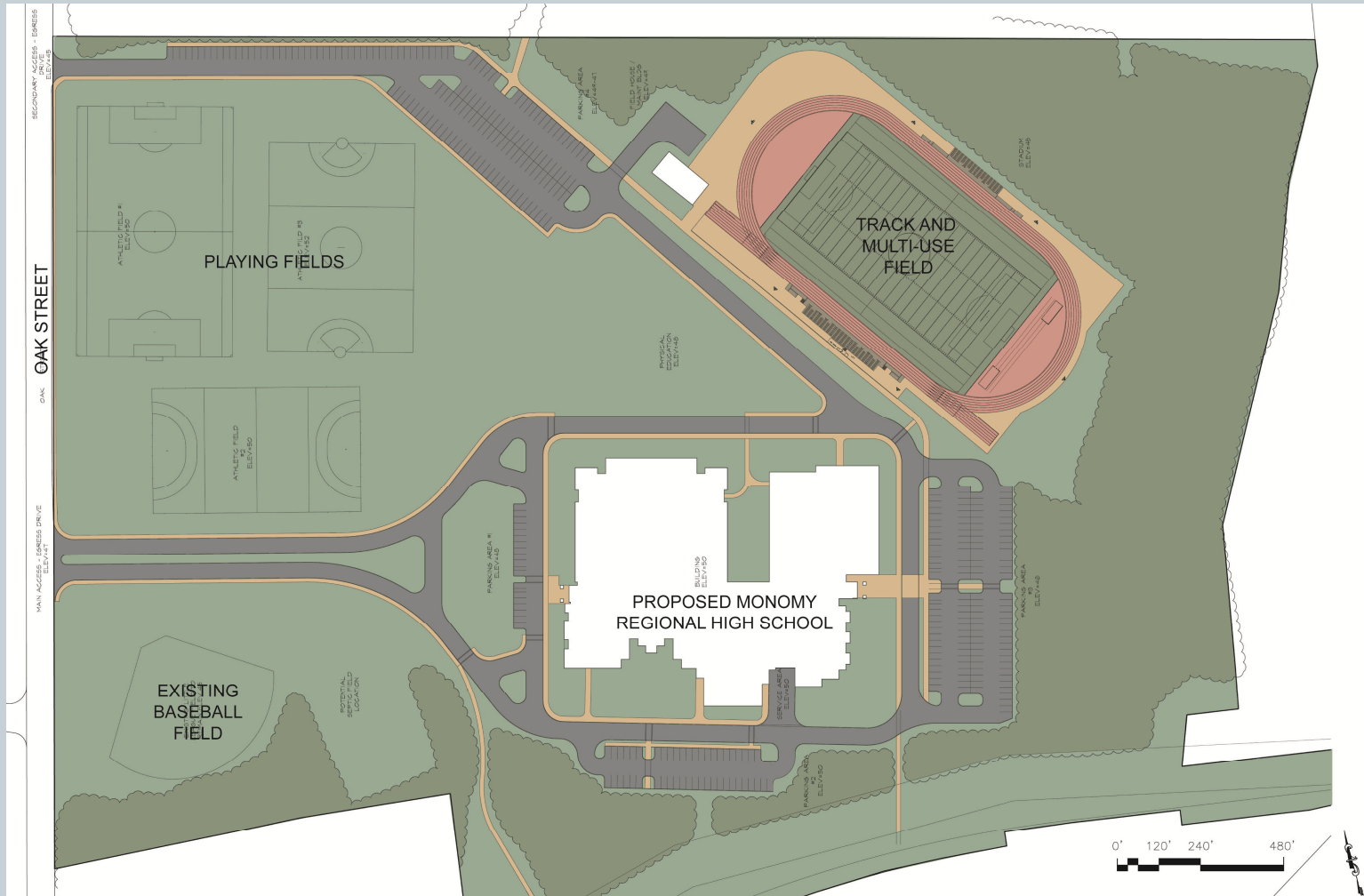
- From “regionalizing” to a functioning region
- Harwich High School’s facility has outlived its usefulness and life expectancy
 - MSBA Rating of 4
 - NEASC “Warning”
- Facilities structure established in the Regional Agreement
- Reduce schools from 6 to 4
- Increased educational opportunities

What are the educational benefits of the new Monomoy Regional High School?



- Increased opportunities for academics, arts and athletics
 - State-of-the art facility
 - ✦ MSBA Model School
 - ✦ Energy efficient
 - ✦ Designed to support enhanced learning
 - ✦ Team spaces
 - ✦ World communication
 - ✦ Technology infrastructure
 - 21st century learning opportunities
 - ✦ Collaboration
 - ✦ Project based
 - ✦ Technology integration
 - Larger student population to sustain and expand diverse programs

Monomoy Regional High School Proposed Site Plan

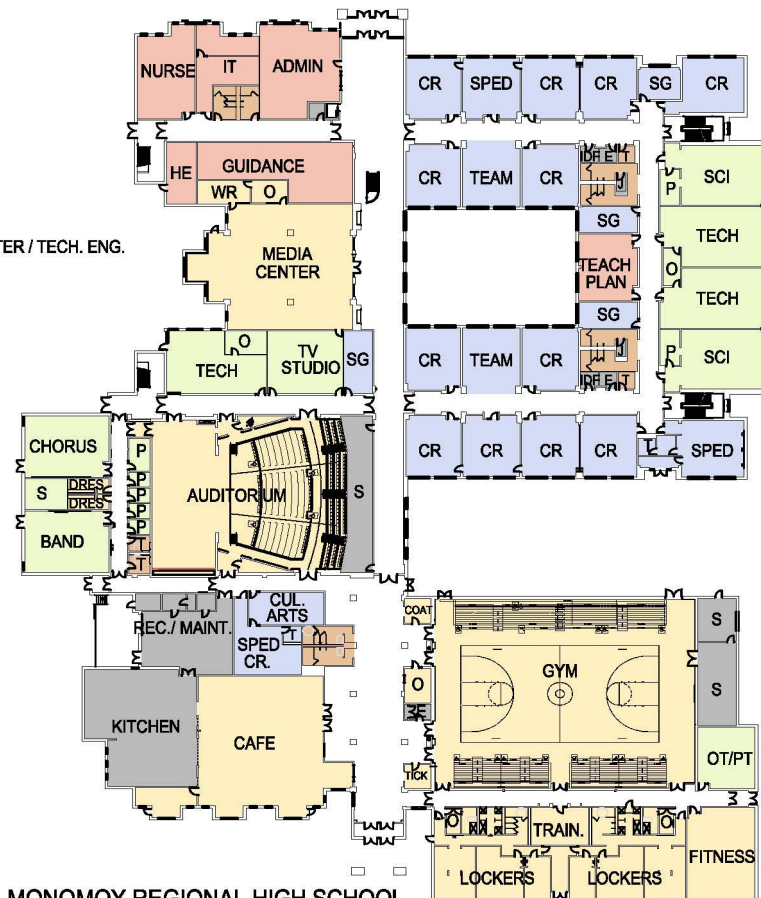


Monomoy Regional High School

Proposed First Floor Plan

LEGEND

- CLASSROOM
- SCIENCE / ART/ COMPUTER / TECH. ENG.
- COMMUNITY
- ADMINISTRATION
- SERVICES
- TOILETS

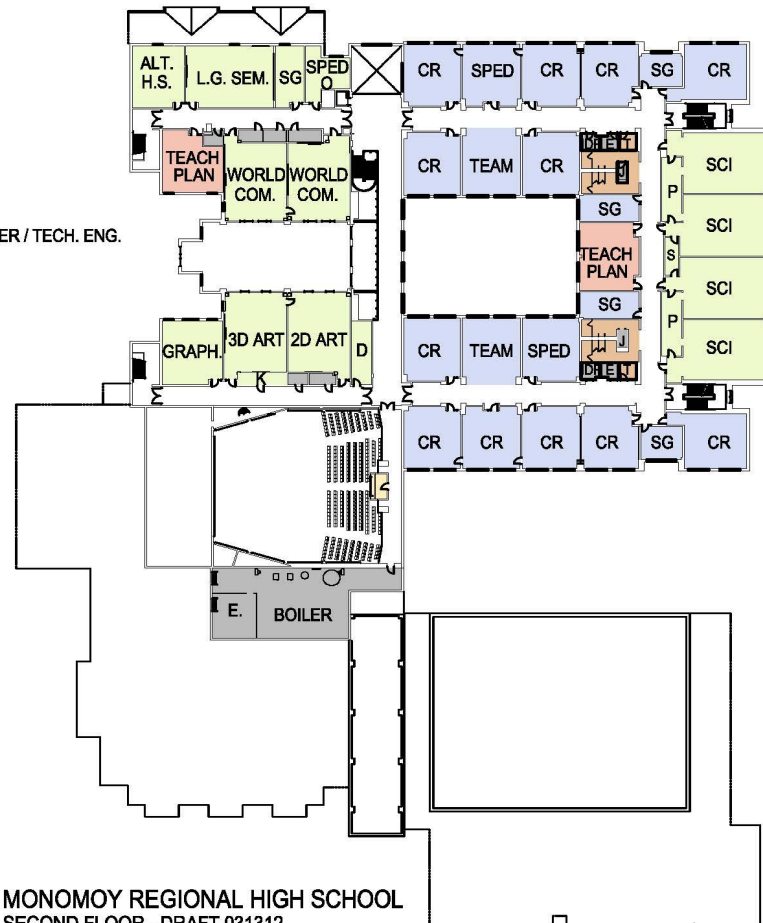


MONOMOY REGIONAL HIGH SCHOOL
FIRST FLOOR - DRAFT 031312

Monomoy Regional High School Proposed Second Floor Plan

LEGEND

- CLASSROOM
- SCIENCE / ART/ COMPUTER / TECH. ENG.
- COMMUNITY
- ADMINISTRATION
- SERVICES
- TOILETS



Monomoy Regional High School Preliminary Exterior Elevation



Monomoy Regional High School Preliminary Exterior Elevation



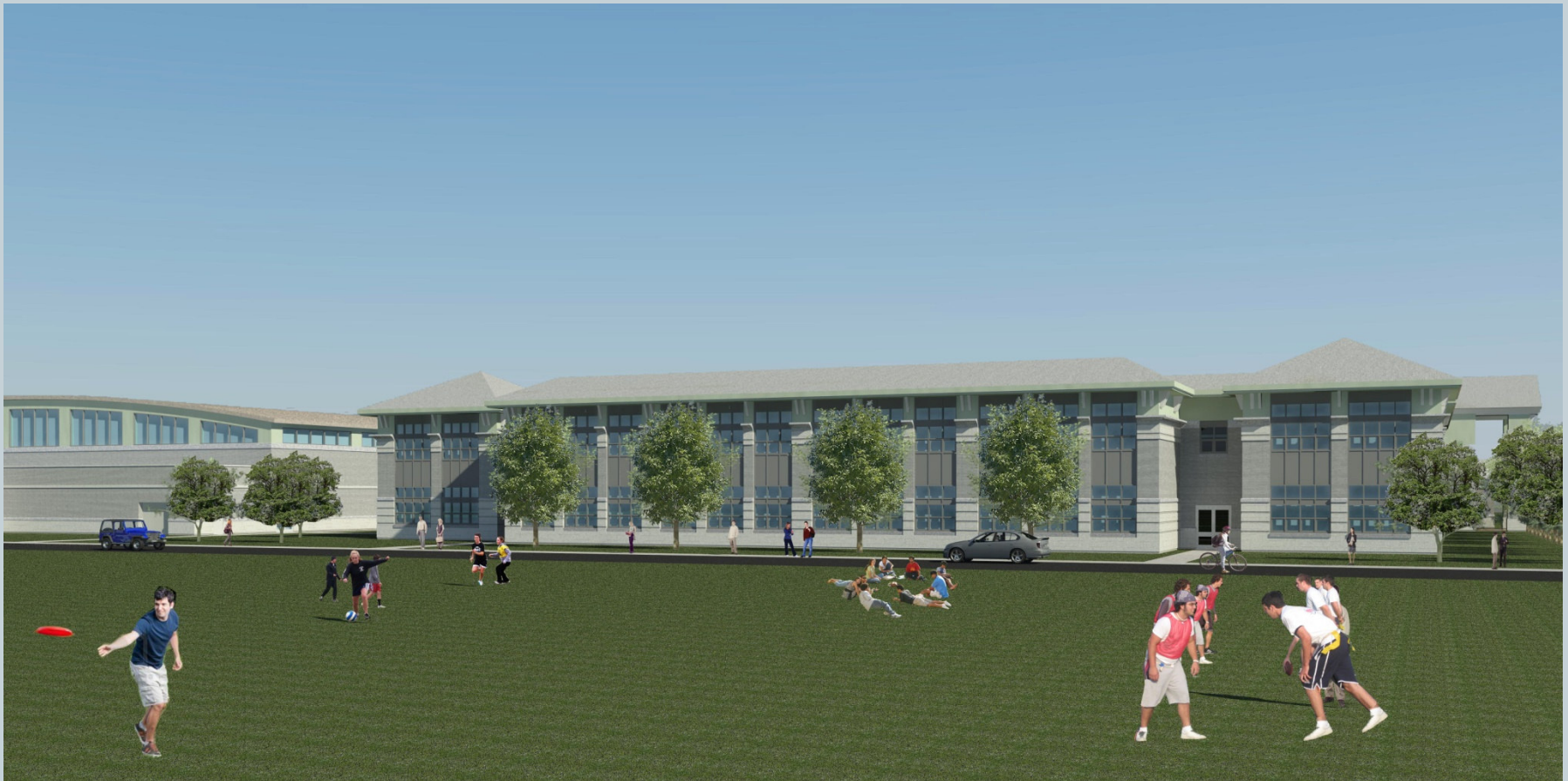
Monomoy Regional High School Preliminary Exterior Elevation



Monomoy Regional High School Preliminary Exterior Elevation



Monomoy Regional High School Preliminary Exterior Elevation



Monomoy Regional High School Preliminary Exterior Elevation



Community Input



- **Opportunities for community to share their thoughts on the New Monomoy Regional High School**
- **Future Community Forums:**
 - **Future Dates To Be Determined**
- **School Building Committee Meetings:**
 - Typically held on the 1st and 3rd Thursday of each month. For more information visit building project link at www.monomoyregion.org

Q&A



THANK YOU!