

Killingly Public Schools

Responsibility • Excellence • Dedication

KIS
NEWS



"Great Things Happen Here"



We believe all students
benefit from the talents of staff from
a variety of different backgrounds,
races and ethnic groups.



OUR STAFF

At Killingly Public Schools, we believe all students benefit from the talents of staff from a variety of different backgrounds, races and ethnic groups.

We are comprised of nurturing, respectful and enthusiastic staff who supports our students through their educational experience. Our staff is highly dedicated and works together with our supportive community to meet the needs of our students. Killingly is a charitable, welcoming and compassionate community that consistently strives to improve. "Killingly Strong" is seen and heard throughout our community—our close-knit community is proud of our identity!



This is my twentieth year working as a School Counselor in the Killingly School District. It has been an honor to work with so many extremely talented colleagues over the course of my career. I am amazed and inspired by our teachers' hard-work, compassion, and ability to make meaningful connections with our kids. I have also been fortunate to witness our students' personal and academic growth and have been so proud of all their amazing achievements. The partnership between our staff and students is what makes Killingly a dynamic and fulfilling place to work. ~ Mr. Walker



DID

YOU

KNOW?

Considering teaching? Looking to change careers? Veteran Looking to Teach? Our partners at TEACH Connecticut have created FREE tools and services that help future teachers navigate the process of becoming a teacher. Learn more about:

- How to become a teacher
- Troops to Teachers program
- Financial aid to help you apply and enroll.
- 1-on-1 expert advice for any question along the way
- How-to guides for applying, testing, and more!

Learn more: <https://connecticut.teach.org/>

TEACH
CONNECTICUT.ORG

OUR SCHOOLS

The district's facilities include a high quality accredited early childhood education center, two elementary schools, one intermediate school and a comprehensive high school with a regional agricultural education center. The district's schools and programs have received numerous state, regional and national awards. Our schools offer robust after-school enrichment offerings to engage students and support social, emotional, cognitive, and academic development.

Killingly High School is a four-year, comprehensive secondary school fully accredited through the New England Association of Schools and Colleges and the Connecticut State Department of Education. Killingly High School offers advanced placement, UConn ECE honors, college preparatory, and general education courses. All offerings are leveled, with the degree of difficulty and amount of preparation identified for each course. KHS has a state-renowned career center that develops career ready graduates which includes a program with over 29 career pathway options. In addition to rigorous academics, we offer a range of programs and activities designed to enrich students' civic knowledge, foster cooperation, and support their physical and social well-being. Our athletic teams have won numerous state championships, our robotics team have won several world championships and our music and agricultural programs have received numerous state and regional awards.



Agricultural Science and Technology Education (ASTE) programs: We support 12 area towns with our state-of-the-art facilities including large and small animal housing, biotechnology lab, aquaponics, greenhouses, a 10-acre farm and a fully equipped shop. Curriculum includes hands-on coursework in production and companion animal science, horticulture, floriculture, environmental science, aquaculture, biotechnology, food science and agricultural engineering.

Killingly Intermediate School offers students, in grades 5 through 8, a rigorous standards-based curriculum focused on helping students take ownership of their learning and prepare for future success. Our academic programming deepens students' knowledge and skills in all core content areas, while our extensive Arts and Technology programs sharpen students' critical-thinking and creative skills. We pride ourselves on developing strong partnerships with families and empower our students to lead reflective conversations around their goals and growth through our spring Student-Led Conferences. At KIS, all students receive the personalized support they need to thrive academically, socially, and emotionally. Our middle school is one of a few in CT that use a proficiency-based grading platform to evaluate student learning.

Killingly Memorial School offers students, in grades 2 through 4, a safe, caring, responsible, respectful, and positive environment where all can learn and achieve academic success. KMS is committed to parent and community partnerships to enhance the learning of all students. We function as a professional learning community that fosters social-emotional growth through a continuum of encouraging support. Teachers collaborate to learn best teaching practices to improve student learning. We monitor each student's learning by the use of assessments on a continual basis, using the results to drive instruction. We provide physical education, art, music, library, computers, and a weekly STEM class.

Killingly Central School offers students in Kindergarten and grade 1, an exceptional early childhood experience where highly qualified staff provides a nurturing environment that supports the development of a young child. We believe in meeting the social, emotional, physical, and academic learning needs of every student through child-centered, individualized learning opportunities. Killingly Central School utilizes the work of Lucy Calkins and Units of Study. We are also at the forefront of 21st century learning through interdisciplinary, inquiry based play for all of our students.

Goodyear Early Childhood Center is a high quality accredited (National Association for the Education of Young Children, NAEYC) early childhood programming for preschool aged children residing in Killingly. Our program includes learning experiences which address the eight domains of the Connecticut Early Learning Standards through a balance of teacher and child directed learning, aligned to the Killingly Public Schools Kindergarten Program. Tuition is based on the Connecticut Office of Early Childhood Sliding Fee Scale, with some grant funded spaces offered. Goodyear also houses the Killingly Family Resource Center (KFRC) which provides access to a broad continuum of early childhood and family support services which foster the optimal development of children and families.

WE SUPPORT OUR TEACHERS

- Professional development
- Committees
- Teacher mentors
- Comprehensive induction program
- Mentoring for new staff
- Year round professional development opportunities
- Opportunities for tuition reimbursement
- Professional learning communities



Board of Education Goals

Goal #1: Academic Achievement

- Create a proficiency based learning system, ensuring equitable achievement opportunities for all students.
- Bring to life the KPS portrait of a graduate with students, staff, families and the community, ensuring all students are prepared for life success.

Goal #2: Talent Development

KPS will recruit and retain highly effective professionals who are collaborative, respectful, supportive, reflective critical thinkers with an ability to connect to our student body.



Goal #3: Organizational Systems

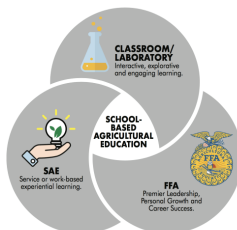
- Update facilities to provide a safe, healthy, adaptable learning environment conducive to student centered teaching and learning for the 21st century.
- Ensure Prek-12 students have access to progressive digital learning tools and the skill to utilize them, preparing them for future success.

Goal #4: School Culture & Climate

- KPS will provide a safe, healthy and supportive environment for learning where students build resilience through the integration of social, emotional and academic skills.
- KPS will cultivate positive student, family, community partnerships that support learning, build pride and recognize the value for education.

We Serve Students Across Our Region

Award winning Agricultural Education program serves students from Killingly, Brooklyn, Putnam, Plainfield, Sterling, Canterbury, Voluntown, Eastford, Pomfret, Griswold, Thompson, and Woodstock. We are also a high school choice for students from Brooklyn & Pomfret



Working Together Is Powerful

When students achieve their goals in education, everyone benefits. When business and community members partner with our schools, students feel more engaged. School and community partnerships create a win-win situation for schools, businesses, community and most importantly our students.

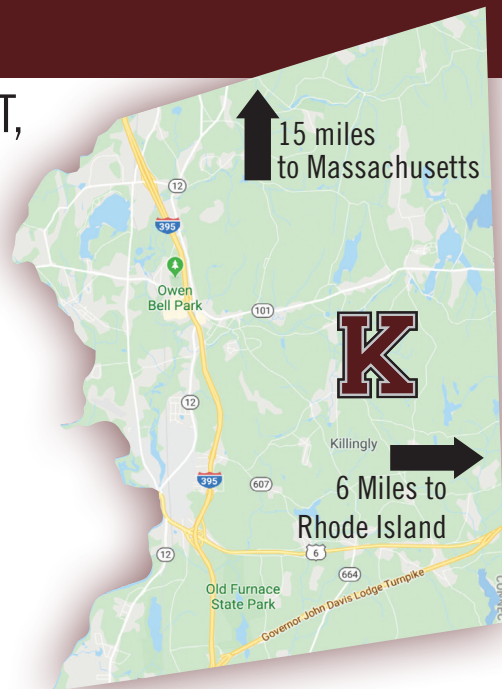


KILLINGLY COMMUNITY

Killingly is located in the northeastern corner of CT,
“The Quiet Corner”
in Windham County.



Major access is through Interstate 395, which runs north/south through the western side of town. Strategically positioned at the crossroads of New England, the town of Killingly is less than an hour from the educational and cultural attractions of Hartford, Providence, Worcester, and 90 minutes from Boston and New Haven. It is comprised of mostly middle to low-income families. Many work in the professional, industrial, mercantile and business fields in the surrounding areas.



KILLINGLY SCHOOL DISTRICT

Killingly has the largest school district in northeastern Connecticut. Killingly Public Schools enroll approximately 2,500 students, Pre-K through grade 12. Our schools share a long history of service to the community. Through consistent family and town support, Killingly schools and their students have developed respected records of success in the fields of music, media, agriculture, technology, multicultural education, and sports. As a district, KPS is committed to doing whatever it takes to make a positive difference in the lives of our students in an effort to keep them connected, engaged and earning credit toward graduation.



Killingly School District Human Resources Department

Kim Gillespie-Burnham, Director
860-779-6795 • kburnham@killinglyschools.org

Kristine Cicchetti, Assistant
860-779-6609 • kcicchetti@killinglyschools.org



Search Open Jobs and Apply on Applitrack:
<https://www.applitrack.com/killingly/onlineapp/>



Visit our school website for more information:
<https://www.killinglyschools.org/>



Learn more about the Town of Killingly:
<https://www.killingly.org/>

To learn more about our schools, programs, job shadow and volunteer opportunities, please contact Human Resources.

