

FPS STEAM

Intradistrict Magnet School Considerations





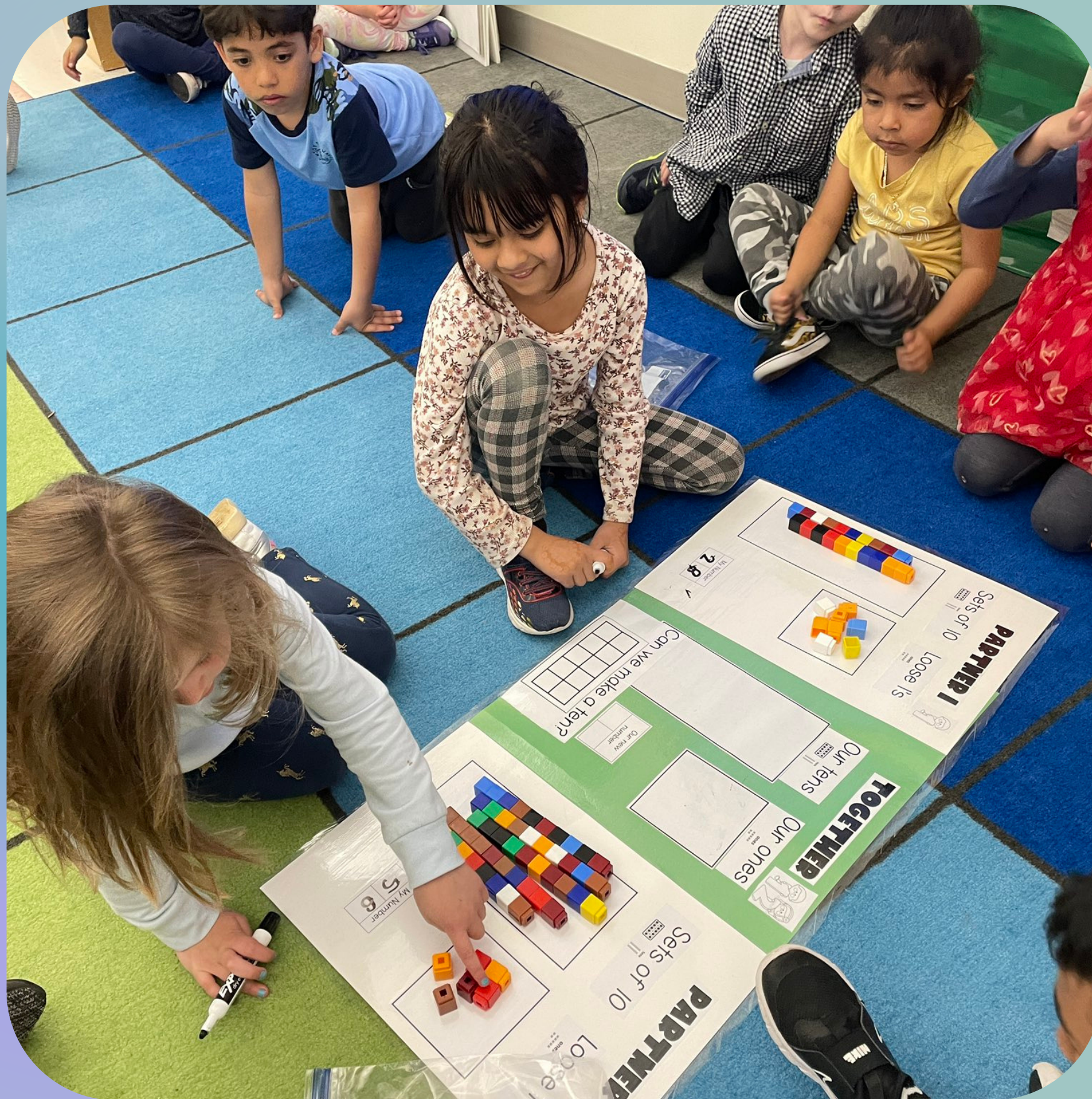
Intradistrict Magnet

An Intradistrict Magnet School accepts students from other schools within the same district

The creation of the Magnet School will provide opportunities for other students to attend a more diverse elementary school

Addresses facilities utilization and racial imbalance by providing a unique opportunity for students across Fairfield

Engages students through unique learning opportunities and techniques



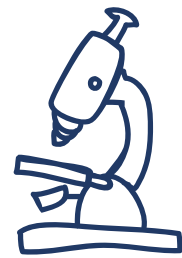
Why STEAM?

Experts estimate that as many as 65 percent of today's elementary school students will end up working in jobs that have not been invented yet

A STEAM (Science, Technology, Engineering, Arts, and Mathematics) elementary school supports interdisciplinary learning and creativity



STEAM INTRADISTRICT MAGNET COMPONENTS



Science and Technology labs

Engineering Design Spaces

Arts and Maker Spaces

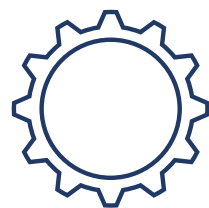
Robotics and Coding

Project-Based Learning

Collaboration and Teamwork

Community Partnerships

Professional Development



THEATRE OFFERINGS

Drama Classes

Theatre Productions

Script Analysis and Interpretation

Stagecraft and Technical Theatre

Collaboration and Ensemble Work

Theatre History and Appreciation

Performance Opportunities





Arts Integration

music
collaboration cognitive
voice growth self
craft showcases expression
ensemble cultural theatre movement
dance drama creativity
community performances
acting stage personal observation
appreciation inclusivity
development

STEAM Magnet School Implementation & Lottery 2024-25



Fairfield Public Schools will create a Magnet School Zone



Students entering Kindergarten in 2024-25 will enter the lottery for acceptance into the Magnet School



Current McKinley students will complete the elementary school experience through Grade 5



A percentage of students in the Magnet Zone and siblings will receive priority to attend



Remaining Magnet School seats will be filled via lottery by students from across the town who apply



Students who live in the Magnet Zone will enter the lottery or opt to attend their neighborhood school; Jennings or Stratfield depending on address



The district will work to develop a plan to support those families who require after-school programming currently offered at McKinley

FPS Magnet Zone

