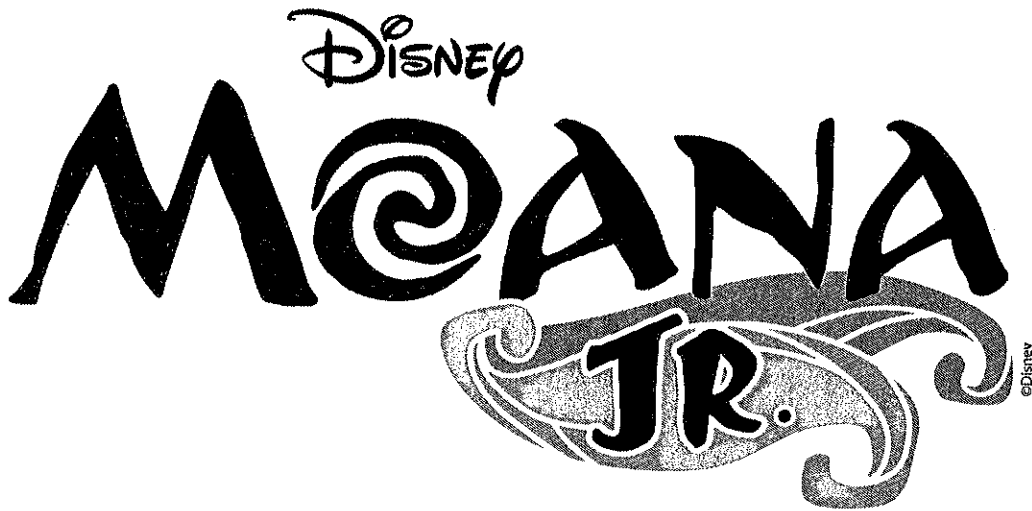


SFE Presents:



---

JANUARY 25-28, 2023

*Save This Packet/Page for Easy Reference*

Website—<https://www.crsd.org/Page/24136>

*This is Mrs. Leigh's website where you can easily gain access to information regarding Disney's Moana, Jr. by clicking on the button on the left hand side of the page.*

Tech Rehearsals are important and **mandatory**  
for all listed on the schedule.

Dress Rehearsals and Performances  
important and **mandatory** for **ALL Cast and Crew.**

If you are unable to attend on these dates,  
you should not accept a role.

# IMPORTANT DATES for *MOANA, Jr*

## Audition Dates:

- October 17, Monday: Auditions, 4 – 7:00 PM  
(Headshots taken **ONLY** on this date.)
- October 20, Thursday: Callbacks, APR, 4 – 6 PM
- October 21, Friday: Roles announced

## Special Rehearsal Dates:

- January 17, Tuesday, 5:30 PM – 8:00 PM: Technical Rehearsal I @ NMS  
**(mandatory for named roles and stage crew)**
- January 18, Wednesday, 5:30 – 7:00 PM: **ALL CAST Run-Throughs @ NMS**  
**(mandatory for ALL CAST)**
- January 19, Thursday, 5:30 – 7:00 PM: **ALL CAST Run-Throughs @ NMS**  
**(mandatory for ALL CAST)**
- January 20, Friday, 5:30 PM – 8:00 PM: Technical Rehearsal II @ NMS  
**(mandatory for named roles and stage crew)**
- January 23, Monday, 5:00 – 7:30 PM: Dress Rehearsal @ NMS  
**(all actors must be at all dress rehearsals for the entire time)**
- January 24, Tuesday, 5:00 – 7:30 PM: Dress Rehearsal @ NMS  
**(all actors must be at all dress rehearsals for the entire time)**

## Performances:

- January 25, Wednesday: 9:30 – 11:00 AM @ NMS
  - (SFE Student Performances still TBD, date could possibly change)
- January 26, Thursday: 9:30 – 11:00 AM @ NMS
  - (SFE Student Performances still TBD, date could possibly change)
- January 27, Friday: 7:00 – 8:30 PM @ NMS
  - (Report time will be earlier, 7pm is when the show starts)
- January 28, Saturday: 3:00 – 4:30 PM @ NMS
  - (Report time will be earlier, 3pm is when the show starts)

## COMMUNICATION

Most communication regarding the musical is via email and the Moana Google Classroom.  
Please contact Mrs. Leigh if you **do NOT** have a working email address.

### EMAIL ADDRESSES FOR THE DIRECTORS

Mrs. Lauren Leigh: [lleigh@crsd.org](mailto:lleigh@crsd.org)

Mrs. Becky Inker: [rinker@crsd.org](mailto:rinker@crsd.org)

## COMMITMENT

- You must be available for **ALL** dress rehearsals and performance dates **in their entirety**. **ALL** actors are in **ALL** shows.
- Anyone who would like to be in the show must complete an audition. This audition is to place you in the most appropriate role for you. **NO ONE** is “cut” from the cast.
- A \$50 non-refundable participation fee (payable via the SFE PTO website) is asked to help cover production costs (individual script, some costumes, some accessories, props, scenery, cast T-shirt and cast party.) *If this fee is a financial hardship, please contact Mrs. Leigh and the fee will be confidentially waived.*
- Check the attached schedule before committing to this musical. The only time the schedule will change is for a school closing related re-schedule.
- Please consider any after-school commitments (sports, religion classes, music/dance classes) to determine if you will be able to **fully commit** to being a part of the musical.
- Students having **more than one unexcused absence** from rehearsal will be asked to **leave the cast** and will be ineligible to participate in the performances. (Excused absence occurs only when the student is absent from the school day due to sickness or emergency.) Medical appointments are **not** excused absences from the musical, please plan ahead.
- Please do not plan to miss rehearsals. It is important that you be at every rehearsal as a lot of information (songs, staging places and choreography) is taught during rehearsals. This is not a good time to plan family vacations where you will be missing school as you will miss a lot of staging.
- Leaving rehearsal early will count as time towards an **unexcused** absence.
- If an actor misses a whole scene rehearsal more than once; the student will not be able to participate in the performance of that scene.
- It is mandatory that you are picked up promptly following rehearsals at 5:15pm. ***Habitual lateness will affect the student's eligibility to participate in the musical.***
- Please try to carpool with other families involved with the musical.
- Parents must come up to the school to retrieve their children after rehearsals have concluded. The parking lot is dark and it is dangerous for students to be walking out to their cars, unattended. This is a school policy.
- Remember, if you miss rehearsal, you are not only missing what takes place during rehearsal, you are a missing link in a chain and a missing member of a team. If we all work together, we will build an amazing bond and have a terrific show!

## PRE-AUDITION

- Audition material is attached. **All audition material must be memorized.**
- If you would like to audition, follow the steps below, in **ORDER**:
  - 1) *Register online: [www.SFEPTO.com](http://www.SFEPTO.com).* Use the link for "Moana, Jr." to register for the show and pay your \$50 participation fee.  
(This must be completed by Friday, October 14.)
  - 2) **Once you have registered and paid**, you may then sign-up for an audition time on the sheet outside of the Music Room. Signing up for an audition time should not be interrupting class or hallway transition time. It should be done during "downtime," e.g., arrival, start of recess, dismissal. (This must be completed by Friday, October 14.) If you need a specific audition time, please do not wait to register as audition spots will fill-up quickly.

## AT YOUR AUDITION

- ***Wear a solid-colored shirt with no words or designs.***  
(This is the day your head shot will be taken.)
- Arrive 10 minutes before your scheduled time and wait **quietly** in the hallway.
- Please bring homework or a book to read while waiting for your audition.
- Go to the costume station and get measured.
- Take your headshot. (If you are not there on October 17, you will not have your photo taken.)
- Take your singing and acting audition in the Music Room.
- After your audition, you may leave with your ride. You may wait for your ride in the front hallway. **You may not roam the halls. You may not go outside.**
- **Parents MUST come up to the building to get their child.**
- Callbacks for **some** selected students will be held Thursday, October 20, 4 PM - 6 PM. Students are required to stay the entire time for the callbacks. We will contact you if you need to stay for a callback.

## REHEARSALS

- The **ENTIRE** rehearsal schedule is detailed in this packet and is always on Mrs. Leigh's website.
- It is the student's responsibility to know their schedule.
- Students must be prepared for each rehearsal with their script book and a pencil. Be sure to read the script ahead of time and practice at home once we have blocked/choreographed it.
- Please be aware that all rehearsals at NMS are on a different time schedule.
- *Students are not permitted to call home from the office regarding rehearsals. Being in the show requires a lot of student responsibility and independence. You can do it! ☺*
- Technical Rehearsals (in their entirety) are **mandatory** for certain roles.
- Dress rehearsals (in their entirety) are **mandatory** for ALL actors. Please keep in mind that in the event of school cancelation due to weather, the schedule may need to be changed.

## SFE MOANA, JR: SCHEDULE 2022-2023

<u>DATE:</u>	<u>TIME:</u>	<u>WHAT:</u>	<u>WHO:</u>
September 28 to October 4	MUSIC CLASS	INFORMATION PACKETS GO OUT	ALL 5th & 6th Grade Students
Monday, October 17	4pm-7pm	Auditions- Music Room	Sign-ups (10 minutes total for each student)
Thursday, October 20	4-6pm	Callbacks- Music Room	To Be Announced (only selected students stay the entire time)
Friday, October 21	afternoon	Cast Announcement	ALL CAST
Tuesday, October 25	3:45-5:15pm	Read-through in the Music Room	ALL CAST
Wednesday, October 26	3:45-5:15pm	Read-through in the Music Room	ALL CAST
Thursday, October 27	3:45-5:15pm	songs/lines in the Music Room	Moana, Maui, Chief Ancestors 1-4, Gramma Tala, Chief Tui, Sina, Hei Hei, Pua, Tamatoa, Right/Left Claw
Friday, October 28	3:45-5:15pm	songs/lines in the Music Room	Moana, Maui, Chief Ancestors 1-4, Gramma Tala, Chief Tui, Sina, Hei Hei, Pua, Tamatoa, Right/Left Claw
Monday, October 31	<b>NO REHEARSAL</b>	<b>HALLOWEEN</b>	<b>NO REHEARSAL- HALLOWEEN</b>
Tuesday, November 1	3:45-5:15pm	songs/lines in the Music Room	Moana, Maui, Chief Ancestors 1-4, Gramma Tala, Chief Tui, Sina, Hei Hei, Pua, Tamatoa, Right/Left Claw, Fishers 1-2, Villagers 1-6, Ocean Ensemble
Wednesday, November 2	3:45-5:15pm	songs/lines in the Music Room	Moana, Maui, Chief Ancestors 1-4, Gramma Tala, Chief Tui, Sina, Hei Hei, Pua, Tamatoa, Right/Left Claw, Fishers 1-2, Villagers 1-6, Ocean Ensemble
Thursday, November 3	3:45-5:15pm	songs/lines in the Music Room	Moana, Maui, Chief Ancestors 1-4, Gramma Tala, Chief Tui, Sina, Hei Hei, Pua, Tamatoa, Right/Left Claw
Friday, November 4	3:45-5:15pm	songs/lines in the Music Room	Moana, Maui, Chief Ancestors 1-4, Gramma Tala, Chief Tui, Sina, Hei Hei, Pua, Tamatoa, Right/Left Claw

<b>DATE:</b>	<b>TIME:</b>	<b>WHAT:</b>	<b>WHO:</b>
Monday, November 7	3:45-5:15pm	songs/lines in the Music Room	Moana, Maui, Chief Ancestors 1-4, Gramma Tala, Chief Tui, Sina, Hei Hei, Pua, Tamatoa, Right/Left Claw, Fishers 1-2, Villagers 1-6, Ocean Ensemble
Tuesday, November 8	<b>NO REHEARSAL</b>	<b>NO REHEARSAL- ELECTION DAY</b>	<b>NO REHEARSAL- ELECTION DAY</b>
Wednesday, November 9	3:45-5:15pm	Scenes 1-2	Moana, Maui, Chief Ancestors 1-4, Gramma Tala, Chief Tui, Sina, Hei Hei, Pua, Tamatoa, Right/Left Claw, Fishers 1-2, Villagers 1-6
Thursday, November 10	3:45-5:15pm	Scenes 2-3	Moana, Maui, Chief Ancestors 1-4, Gramma Tala, Chief Tui, Sina, Hei Hei, Pua, Tamatoa, Right/Left Claw, Fishers 1-2, Villagers 1-6
Friday, November 11	3:45-5:15pm	Scenes 3-4	Moana, Maui, Chief Ancestors 1-4, Gramma Tala, Chief Tui, Sina, Hei Hei, Pua, Tamatoa, Right/Left Claw, Fishers 1-2, Villagers 1-6
Monday, November 14	3:45-5:15pm	Scenes 1-4	Moana, Maui, Chief Ancestors 1-4, Gramma Tala, Chief Tui, Sina, Hei Hei, Pua, Tamatoa, Right/Left Claw, Fishers 1-2, Villagers 1-6, Ocean Ensemble
Tuesday, November 15	3:45-5:15pm	Scenes 5-6	Moana, Maui, Ocean Ensemble
Wednesday, November 16	3:45-5:15pm	Scenes 6-7	Moana, Maui, Ocean Ensemble
Thursday, November 17	3:45-5:15pm	Scenes 7-8	Moana, Maui, Tamatoa, Left Claw, Right Claw, Ocean Ensemble, Gate Monster Ensemble
Friday, November 18	3:45-5:15pm	Scenes 8-9	Moana, Maui, Tamatoa, Left Claw, Right Claw, Shiny Ensemble, Ocean Ensemble
Monday, November 28	3:45-5:15pm	Scenes 9-10	Moana, Maui, Gramma Tala, Te Ka/Te Fiti, Ancestors 1-4, Ocean Ensemble
Tuesday, November 29	3:45-5:15pm	Scenes 5-10	Moana, Maui, Tamatoa, Left Claw, Right Claw, Gramma Tala, Te Ka/Te Fiti, Ancestors 1-4, Gate Monster Ensemble, Shiny Ensemble, Ocean Ensemble
Wednesday, November 30	3:45-5:15pm	Scene 11	Moana, Maui, Chief Ancestors 1-4, Gramma Tala, Chief Tui, Sina, Hei Hei, Pua, Tamatoa, Right/Left Claw, Fishers 1-2, Villagers 1-6, Gate Monster Ensemble, Shiny Ensemble, Ocean Ensemble
Thursday, December 1	3:45-5:15pm	Questions and Spruce-Ups	Moana, Maui, Chief Ancestors 1-4, Gramma Tala, Chief Tui, Sina, Hei Hei, Pua, Tamatoa, Right/Left Claw, Fishers 1-2, Villagers 1-6, Gate Monster Ensemble, Shiny Ensemble, Ocean Ensemble
Friday, December 2	<b>NO REHEARSAL</b>	<b>NO REHEARSAL</b>	<b>NO REHEARSAL</b>

<u>DATE:</u>	<u>TIME:</u>	<u>WHAT:</u>	<u>WHO:</u>
Monday, December 5	3:45-5:15pm	Questions and Spruce-Ups	Moana, Maui, Chief Ancestors 1-4, Gramma Tala, Chief Tui, Sina, Hei Hei, Pua, Tamatoa, Right/Left Claw, Fishers 1-2, Villagers 1-6, Gate Monster Ensemble, Shiny Ensemble, Ocean Ensemble
Tuesday, December 6	3:45-5:15pm	Questions and Spruce-Ups	Moana, Maui, Chief Ancestors 1-4, Gramma Tala, Chief Tui, Sina, Hei Hei, Pua, Tamatoa, Right/Left Claw, Fishers 1-2, Villagers 1-6, Gate Monster Ensemble, Shiny Ensemble, Ocean Ensemble
Wednesday, December 7	<b>NO REHEARSAL</b>	<b>WINTER CONCERT @ NMS</b>	<b>NO REHEARSAL- WINTER CONCERT @ NMS</b>
Thursday, December 8	3:45-5:15pm	Scenes 1-4	Moana, Maui, Chief Ancestors 1-4, Gramma Tala, Chief Tui, Sina, Hei Hei, Pua, Tamatoa, Right/Left Claw, Fishers 1-2, Villagers 1-6, Ocean Ensemble
Friday, December 9	3:45-5:15pm	Scenes 1-4	Moana, Maui, Chief Ancestors 1-4, Gramma Tala, Chief Tui, Sina, Hei Hei, Pua, Tamatoa, Right/Left Claw, Fishers 1-2, Villagers 1-6, Ocean Ensemble
Monday, December 12	3:45-5:15pm	Scenes 5-10	Moana, Maui, Tamatoa, Left Claw, Right Claw, Gramma Tala, Te Ka/Te Fiti, Ancestors 1-4, Gate Monster Ensemble, Shiny Ensemble, Ocean Ensemble
Tuesday, December 13	3:45-5:15pm	Scenes 5-10	Moana, Maui, Tamatoa, Left Claw, Right Claw, Gramma Tala, Te Ka/Te Fiti, Ancestors 1-4, Gate Monster Ensemble, Shiny Ensemble, Ocean Ensemble
Wednesday, December 14	3:45-5:15pm	Scenes 5-10	Moana, Maui, Tamatoa, Left Claw, Right Claw, Gramma Tala, Te Ka/Te Fiti, Ancestors 1-4, Gate Monster Ensemble, Shiny Ensemble, Ocean Ensemble
Thursday, December 15	3:45-5:15pm	Scene 11	Moana, Maui, Chief Ancestors 1-4, Gramma Tala, Chief Tui, Sina, Hei Hei, Pua, Tamatoa, Right/Left Claw, Fishers 1-2, Villagers 1-6, Gate Monster Ensemble, Shiny Ensemble, Ocean Ensemble
Friday, December 16	3:45-5:15pm	Questions and Spruce-Ups	Moana, Maui, Chief Ancestors 1-4, Gramma Tala, Chief Tui, Sina, Hei Hei, Pua, Tamatoa, Right/Left Claw, Fishers 1-2, Villagers 1-6, Gate Monster Ensemble, Shiny Ensemble, Ocean Ensemble

<u>DATE:</u>	<u>TIME:</u>	<u>WHAT:</u>	<u>WHO:</u>
Monday, December 19	3:45-5:15pm	ALL CAST- Learn Full Ensemble Songs	ALL CAST
Tuesday, December 20	3:45-5:15pm	ALL CAST- Learn Full Ensemble Songs	ALL CAST
Wednesday, December 21	3:45-5:15pm	ALL CAST- Learn Full Ensemble Songs	ALL CAST
Thursday, December 22		<b>NO REHEARSAL WINTER BREAK BEGINS</b>	<b>NO REHEARSAL- WINTER BREAK BEGINS</b>

Tuesday, January 3	3:45-5:15pm	Scene 1: Blocking & Choreography	ALL CAST
Wednesday, January 4	3:45-5:15pm	Scene 1/2: Blocking & Choreography	ALL CAST
Thursday, January 5	3:45-5:15pm	Scene 2: Blocking & Choreography	ALL CAST
Friday, January 6	3:45-5:15pm	Scene 4: Blocking & Choreography	ALL CAST

Monday, January 9	3:45-5:15pm	Scene 4/5: Blocking & Choreography	ALL CAST
Tuesday, January 10	3:45-5:15pm	Scene 5: Blocking & Choreography	ALL CAST
Wednesday, January 11	3:45-5:15pm	Scene 11: Blocking & Choreography	ALL CAST
Thursday, January 12	3:45-5:15pm	Scene 11: Blocking & Choreography	ALL CAST
Friday, January 13	3:45-5:15pm	Scenes 1, 2, 4, 5, 11: Run-throughs	ALL CAST

<b>*****ALL REHEARSALS/PERFORMANCES FROM HERE ON WILL BE AT NMS*****</b>			
Monday, January 16		<b>NO REHEARSAL NO REHEARSAL- MLK DAY</b>	<b>NO REHEARSAL- MLK DAY</b>
Tuesday, January 17	5:30-8:00pm	Tech I: (eat dinner at home beforehand)	Named Roles + Stage Crew
Wednesday, January 18	5:30-7:00pm	Scenes 1, 2, 4, 5, 11: Run-throughs @ NMS	ALL CAST
Thursday, January 19	5:30-7:00pm	Scenes 1, 2, 4, 5, 11: Run-throughs @ NMS	ALL CAST
Friday, January 20	5:30-8:00pm	Tech II: (eat dinner at home beforehand)	Named Roles + Stage Crew

Monday, January 23	5:00-7:30pm	Dress Rehearsal/Photos	ALL CAST + STAGE CREW
Tuesday, January 24	5:00-7:30pm	Dress Rehearsal/Photos	ALL CAST + STAGE CREW
Wednesday, January 25	9:30am-11am	Performance 1 at NMS (SFE bussed over...?)	ALL CAST + STAGE CREW
<b>(HALF DAY STUDENTS)</b>		<i>SFE Student Performances still TBD</i>	ALL CAST + STAGE CREW
		<i>This date could possibly change</i>	
Thursday, January 26	9:30am-11am	Performance 2 at NMS (SFE bussed over...?)	ALL CAST + STAGE CREW
		<i>SFE Student Performances still TBD</i>	
		<i>This date could possibly change</i>	ALL CAST + STAGE CREW
Friday, January 27	7pm-8:30pm	Performance 3 (report time will be earlier)	ALL CAST + STAGE CREW
Saturday, January 28	3pm-4:30pm	Performance 4 (report time will be earlier)	ALL CAST + STAGE CREW
	til 5:30pm	Cast Party in NMS cafeteria	ALL CAST + STAGE CREW





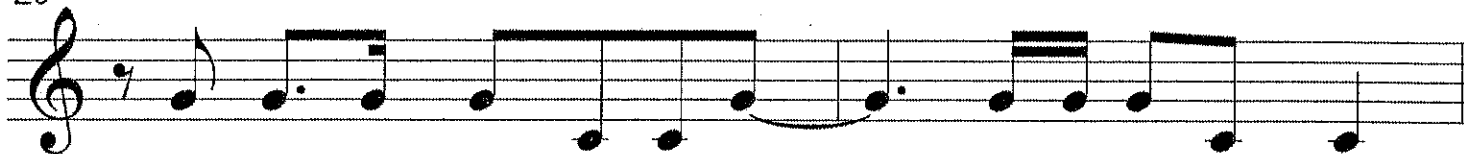
AUDITION SONG — "We Know the Way"  
ALL AUDITION MATERIAL MUST BE MEMORIZED

24



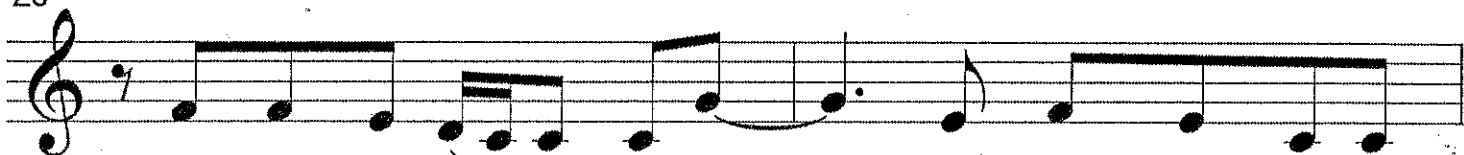
We read the wind and the sky \_\_\_\_\_ when the sun is high.

26



We sail the length of the seas \_\_\_\_\_ on the o - cean breeze.

28



At night we name ev - 'ry star, \_\_\_\_\_ we know where we are.

30



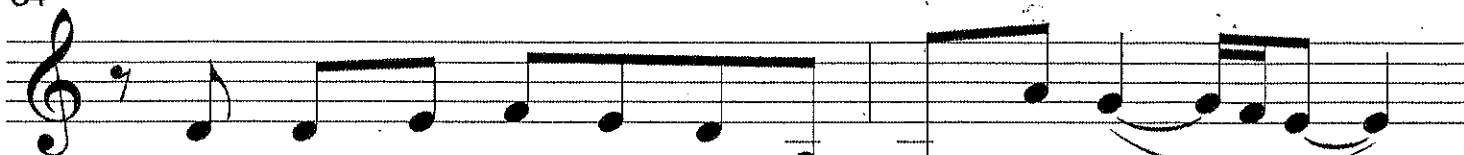
\_\_\_\_\_ We know who we are, \_\_\_\_\_ who we are... \_\_\_\_\_

32



A - way, a - way! \_\_\_\_\_ We set a course to find

34



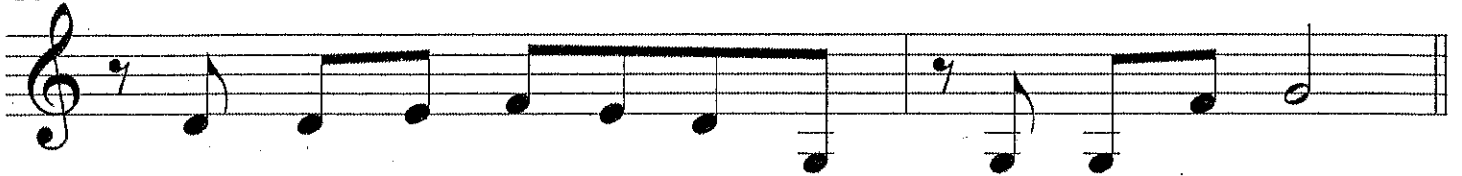
a brand new is - land ev - 'ry - where we roam. \_\_\_\_\_

36

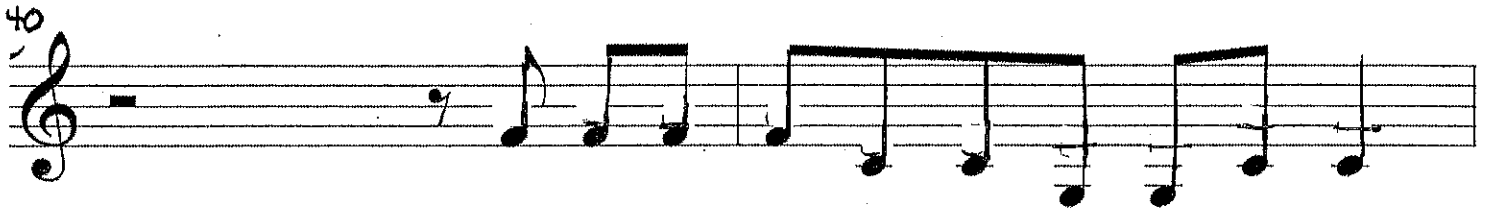


A-way, a-way! We keep our is-land in our mind.

38



And when it's time to find home, we know the way!



We are ex-plor-ers, read-ing ev-'ry sign.



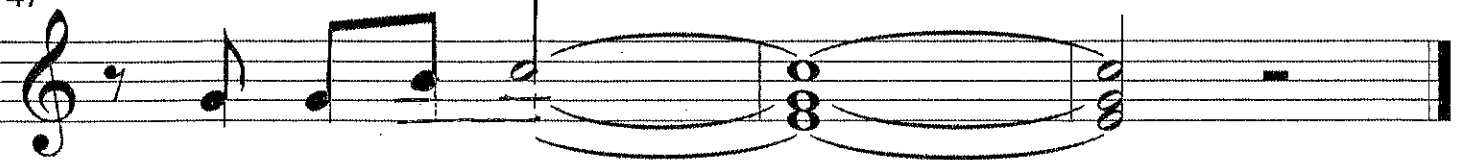
We tell the sto-ries of our eld-ers in a nev-er-end-ing chain.

45



Te fen - u - a te ma - li - e, Na - e ko ha - ki - li - a

47



We know the way! \_\_\_\_\_

## AUDITION LINES—

Choose **ONE** of the three monologues to perform at your audition  
**ALL AUDITION MATERIAL MUST BE MEMORIZED**

### MOANA

This crab really likes treasure. Are you sure this is going to work?

*(MOANA reads loud and overstated, like she is reading cue cards)*

“Wow, a shiny, glittery cave and just like me it is covered in sparkly treasure. Sparkle. Sparkle. Sparkle.”

*(MOANA goes back to her regular voice)*

This is stupid! I’m just gonna grab the hook. I do not have a death wish.

We mortals have heard the tale of the crab who became a legend...

and I need to know how you...became so...crab...ulous...?

### MAUI

Listen...I appreciate what you did back there, but the point is that you almost died...and I couldn’t beat the dumb crab.

I couldn’t even get my hook to work, so chances of me beating Te Ka? This mission is cursed. I wasn’t born a demigod.

I had human parents. But they didn’t want me. They threw me into the sea. Somehow I was found by the gods.

They gave me the hook. They made me “Maui.”

### TAMATOA

Wait a minute! Eww, it’s a human! What are you doing down here?

In the Realm of Monsters? Are you just trying to get me to talk about myself? Because if you are...I will gladly do so!

The Heart of Te Fiti. The power of creation...for a crustacean!

I see...she’s taken a barnacle and covered it in bioluminescent algae as a diversion...UGH! Sebastian never had to put up with this.