

LEA Name : Kutztown Area SD
Address : 251 Long Lane
Kutztown , PA 19530

County : Berks
AUN Number : 114064003
LEA Type : SD

Annual Financial Report Accuracy Certification Statement

For Fiscal Year Ending
6/30/2018

Pennsylvania Department of Education
&
Office of Comptroller Operations

PDE-2056: Intermediate Unit
PDE-2057: School District, AVTS/CTC, Charter School,
and Special Program Jointure

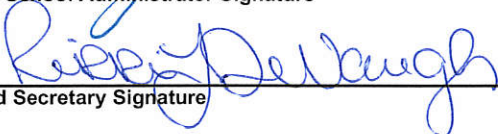
CERTIFICATION: By signing this page I agree that the electronic data submitted is a complete and accurate statement of the financial operations and status of the local education agency for the fiscal year. It has been prepared in accordance with generally accepted accounting principles and established Commonwealth of PA reporting guidelines.



Chief School Administrator Signature

10-31-2018

Date



Board Secretary Signature

11-1-18

Date

David J Miller

Contact Person

(484)641-5526 Ext :

Contact Person Telephone Number

dmiller@kasd.org

Contact Person E-mail Address

Contact Person Fax Number

Audit Certification
Annual Financial Report:
For Fiscal Year Ending **6/30/2018**
(Pursuant to PA School Code Section 218(b))

LEA Name : Kutztown Area SD
AUN Number : 114064003
County : Berks

Audit Certification Due: 12/31/2018

This certification is applicable to the Annual Financial Report data submitted
through the Consolidated Financial Reporting System on: 10/31/18
Date

Auditing Firm:

Herbein + Company, Inc.
2763 Century Blvd

Reading , PA , 19610-


Auditor Contact Name: Nick Bieber

Auditor Phone: (610)378-1175

Auditor E-mail: nlbieber@herbein.com

CERTIFICATION: By signing this page I agree that the financial statements of the school have been properly audited as noted above pursuant to Article XXIV, and in the auditor's professional opinion, the Annual Financial Report (PDE-2057) submitted on the date referenced is materially consistent with the audited financial statements.

Chief School Administrator


Signature

10-31-2018
Date

David J Miller

Contact Person

dmiller@kasd.org

Contact Person E-mail Address

Board Secretary


Signature

11-1-18
Date

(484)641-5526

Ext :

Contact Person Telephone Number

Contact Person Fax Number

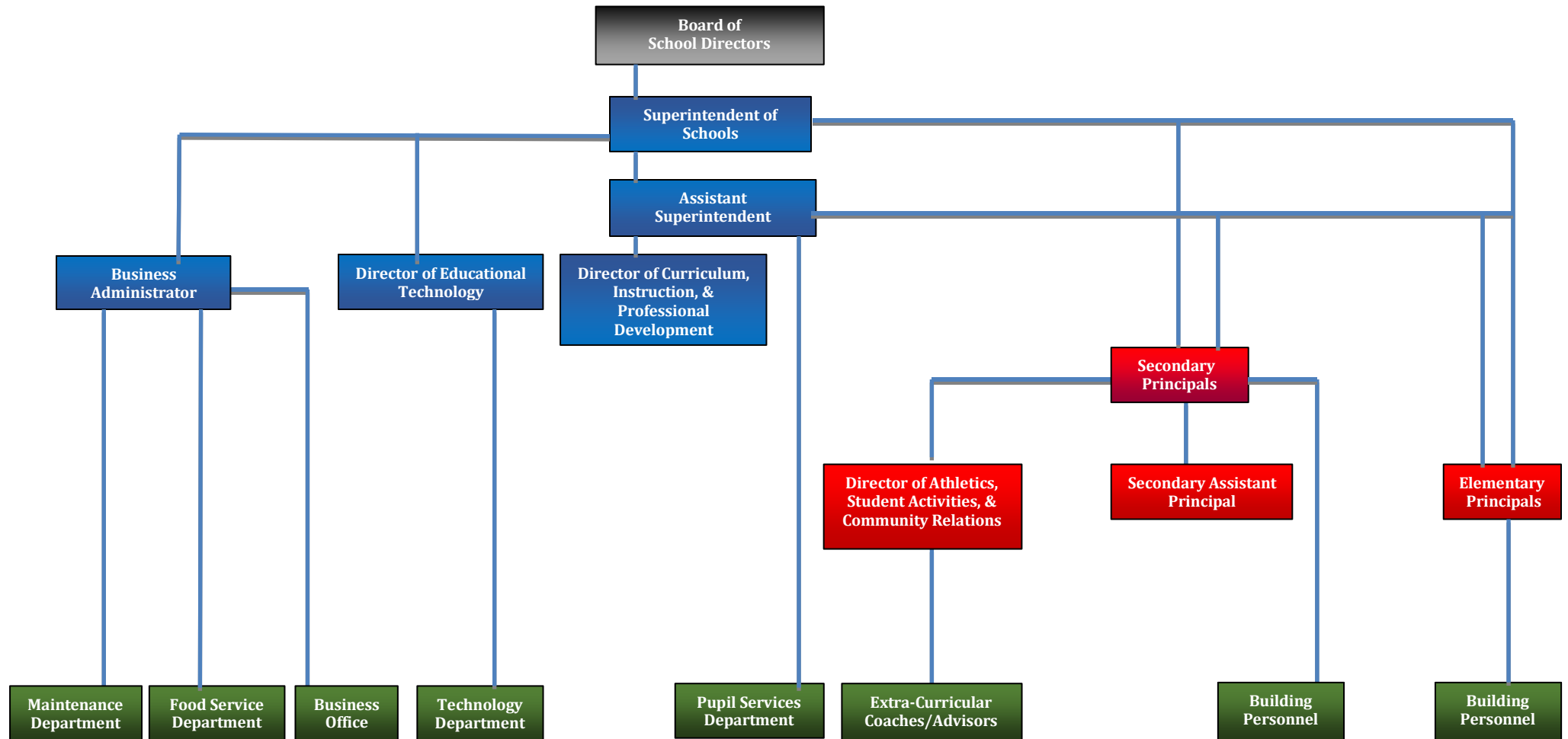
KUTZTOWN AREA SCHOOL DISTRICT

SECTION: LOCAL BOARD PROCEDURES

TITLE: ORGANIZATION CHART

ADOPTED: September 21, 2009

REVISED: October 17, 2011 November 17, 2014
 October 15, 2012 September 21, 2015
 September 16, 2013 September 4, 2018



<u>Val Number</u>	<u>Description</u>	<u>Justification</u>
16230	REP Fund 51 – Net Position - Beginning of Fiscal Year must equal Prior Year AFR, Net Position - End of Year. Justifications to this error must fully explain the situation that prompted a fund balance restatement. "Auditor Adjustment" is not a sufficient justification. REP Fund 51 – Net Position - Beginning of Fiscal Year: \$-196,931.00 REP Fund 51, Prior Year AFR, Net Position - End of Year: \$-125,239.00	Our auditors determined that there were 2 changes to our OPEB liability. The first relates to the HIPAP plan under PSERS and the second is the District's plan. Because of this they restated our beginning net position as of 7/1/17.
42420	Expenditure Detail: Total current year 2700-513 expenditure varies from prior year by 10%. Correct the data or enter a justification. 2700-513, AFR Exp Detail: \$959,610.76 2700-513, PY AFR Amount: \$851,121.96	Huge increase in transportation needs due to special needs students and students attending brick and mortar charter schools.
50160	SOIN: All Governmental Fund General Obligation Bonds must include an amount for Interest Paid during Fiscal Year. Correct data or enter a justification.	The bonds that do not have an entry were finalized late in the year and there were no interest payments due in the 2017-18 year.
50450	SESS - 2350 Legal and Accounting Services: SESS Schedule amounts for Special Education vary from prior year by 40% or more. Correct the data or enter a justification. SESS Schedule 2350: \$1,988.00 Prior Year SESS Schedule 2350: \$1,412.00	Each year we use legal representation based on the needs of that particular year. Some years have a greater need, and therefore greater expense, than others.

LEA : 114064003 Kutztown Area SD

Printed 11/2/2018 1:00:05 PM

Amounts Expressed in Whole Dollars		<u>General Fund</u> <u>(10)</u>	<u>Public Purpose Trust</u> <u>(27)</u>	<u>Other Compt Approved</u> <u>(28)</u>	<u>Athletic / Activity</u> <u>(29)</u>	<u>Capital Reserve (690.</u> <u>1850)</u> <u>(31)</u>
Assets And Deferred Outflows Of Resources						
Assets						
0100	Cash and Cash Equivalents	1,032,130				
0110	Investments	5,917,130				
0120	Taxes Receivable	1,035,470				
0130	Due From Other Funds	79,023				
0141	Due From Other Governments	245,784				
0142	State Revenue Receivable	1,331,167				
0143	Federal Revenue Receivable	10,757				
0145	Other Intergovernmental Revenue Receivable					
0146	Due from Primary Government					
0147	Due from Component Unit					
0150	Other Receivables					
0170	Inventories					
0180	Prepaid Expenses (Expenditures)	22,349				
0190	Other Current Assets	584				
Total Assets		\$9,674,394				
0910	Deferred Outflows of Resources					
Total Assets And Deferred Outflows Of Resources		\$9,674,394				

LEA : 114064003 Kutztown Area SD

Printed 11/2/2018 1:00:05 PM

Amounts Expressed in Whole Dollars		<u>Capital Reserve (1431)</u> <u>(32)</u>	<u>Other Capital Projects</u> <u>Fund</u> <u>(39)</u>	<u>Debt Service</u> <u>(40)</u>	<u>Permanent</u> <u>(90)</u>	<u>Total Governmental</u> <u>Funds</u>
Assets And Deferred Outflows Of Resources						
Assets						
0100	Cash and Cash Equivalents		744,913			1,777,043
0110	Investments		3,465,779			9,382,909
0120	Taxes Receivable					1,035,470
0130	Due From Other Funds					79,023
0141	Due From Other Governments					245,784
0142	State Revenue Receivable					1,331,167
0143	Federal Revenue Receivable					10,757
0145	Other Intergovernmental Revenue Receivable					
0146	Due from Primary Government					
0147	Due from Component Unit					
0150	Other Receivables					
0170	Inventories					
0180	Prepaid Expenses (Expenditures)					22,349
0190	Other Current Assets					584
Total Assets			\$4,210,692			\$13,885,086
0910	Deferred Outflows of Resources					
Total Assets And Deferred Outflows Of Resources			\$4,210,692			\$13,885,086

LEA : 114064003 Kutztown Area SD

Printed 11/2/2018 1:00:05 PM

Amounts Expressed in Whole Dollars		<u>General Fund</u> <u>(10)</u>	<u>Public Purpose Trust</u> <u>(27)</u>	<u>Other Compt Approved</u> <u>(28)</u>	<u>Athletic / Activity</u> <u>(29)</u>	<u>Capital Reserve (690.</u> <u>1850)</u> <u>(31)</u>
Liabilities And Deferred Inflows Of Resources And Fund Balances						
Liabilities						
0400	Due to Other Funds					
0411	Due to Other Governments					
0412	Due to Primary Government					
0413	Due to Component Unit					
0420	Accounts Payable	139,179				
0430	Contracts Payable					
0440	Current Portion of Long-Term Debt					
0450	Short-Term Payables	1,292,871				
0461	Accrued Salaries and Benefits	1,316,972				
0462	Payroll Deductions and Withholding	184,083				
0480	Unearned Revenues	797,767				
0490	Other Current Liabilities	70,139				
Total Liabilities		\$3,801,011				
0950	Deferred Inflows of Resources					
Fund Balances						
0810	Nonspendable Fund Balance	22,934				
0820	Restricted Fund Balance					
0830	Committed Fund Balance	2,815,399				
0840	Assigned Fund Balance	1,006,338				
0850	Unassigned Fund Balance	2,028,712				
Total Fund Balances		\$5,873,383				
Total Liabilities, Deferred Inflows Of Resources And Fund Balances		\$9,674,394				

LEA : 114064003 Kutztown Area SD

Printed 11/2/2018 1:00:05 PM

Amounts Expressed in Whole Dollars		<u>Capital Reserve (1431)</u> <u>(32)</u>	<u>Other Capital Projects</u> <u>Fund</u> <u>(39)</u>	<u>Debt Service</u> <u>(40)</u>	<u>Permanent</u> <u>(90)</u>	<u>Total Governmental</u> <u>Funds</u>
Liabilities And Deferred Inflows Of Resources And Fund Balances						
Liabilities						
0400	Due to Other Funds					
0411	Due to Other Governments					
0412	Due to Primary Government					
0413	Due to Component Unit					
0420	Accounts Payable		1,115,698			1,254,877
0430	Contracts Payable					
0440	Current Portion of Long-Term Debt					
0450	Short-Term Payables					1,292,871
0461	Accrued Salaries and Benefits					1,316,972
0462	Payroll Deductions and Withholding					184,083
0480	Unearned Revenues		17,078			814,845
0490	Other Current Liabilities					70,139
Total Liabilities			\$1,132,776			\$4,933,787
0950	Deferred Inflows of Resources					
Fund Balances						
0810	Nonspendable Fund Balance					22,934
0820	Restricted Fund Balance		3,077,916			3,077,916
0830	Committed Fund Balance					2,815,399
0840	Assigned Fund Balance					1,006,338
0850	Unassigned Fund Balance					2,028,712
Total Fund Balances			\$3,077,916			\$8,951,299
Total Liabilities, Deferred Inflows Of Resources And Fund Balances			\$4,210,692			\$13,885,086

LEA : 114064003 Kutztown Area SD

Printed 11/2/2018 1:00:09 PM

Amounts Expressed in Whole Dollars	General Fund (10)	Public Purpose Trust (27)	Other Compt Approved (28)	Athletic / Activity (29)	Capital Reserve (690. 1850) (31)
Revenues					
6000 Revenue from Local Sources	22,886,950				
7000 Revenue from State Sources	8,818,612				
8000 Revenue from Federal Sources	251,757				
Total Revenues	\$31,957,319				
Expenditures					
1000 Instruction	18,578,905				
2000 Support Services	9,901,846				
3000 Operation of Non-Instructional Services	756,104				
4000 Facilities Acquisition, Construction and Improvement Services	205,876				
5110 Debt Service	2,576,785				
5130 Refund of Prior Year Revenues / Receipts	2				
Total Expenditures	\$32,019,518				
Excess (Deficiency) Of Revenues Over Expenditures	(\$62,199)				
Other Financing Sources (Uses)					
9110 Face Value of Bonds Issued					
9120 Proceeds from Refunding of Bonds					
9130 Bond Premiums					
9200 Proceeds from Extended-Term Financing	205,876				
9300 Interfund Transfers - IN					
9400 Sale of or Compensation for Loss of Fixed Assets					
9710 Transfers from Component Units					
9720 Transfers from Primary Governments					
9910 Other Financing Sources Not Listed in the 9000 Series					
9990 Insurance Recoveries					
5120 Debt Service – Refunded Bonds					
5150 Bond Discounts					
5200 Interfund Transfers – Out	452,925				
5300 Transfers Out to Component Units/Primary Governments					
Total Other Financing Sources (Uses)	(\$247,049)				

LEA : 114064003 Kutztown Area SD

Printed 11/2/2018 1:00:09 PM

Amounts Expressed in Whole Dollars		<u>Capital Reserve (1431</u> <u>(32)</u>	<u>Other Capital Projects</u> <u>Fund</u> <u>(39)</u>	<u>Debt Service</u> <u>(40)</u>	<u>Permanent</u> <u>(90)</u>	<u>Total Governmental</u> <u>Funds</u>
Revenues						
6000	Revenue from Local Sources		549,871			23,436,821
7000	Revenue from State Sources					8,818,612
8000	Revenue from Federal Sources					251,757
Total Revenues			\$549,871			\$32,507,190
Expenditures						
1000	Instruction		4,046			18,582,951
2000	Support Services		338,945			10,240,791
3000	Operation of Non-Instructional Services					756,104
4000	Facilities Acquisition, Construction and Improvement Services		4,713,265			4,919,141
5110	Debt Service					2,576,785
5130	Refund of Prior Year Revenues / Receipts					2
Total Expenditures			\$5,056,256			\$37,075,774
Excess (Deficiency) Of Revenues Over Expenditures			(\$4,506,385)			(\$4,568,584)
Other Financing Sources (Uses)						
9110	Face Value of Bonds Issued		4,280,000			4,280,000
9120	Proceeds from Refunding of Bonds					
9130	Bond Premiums					
9200	Proceeds from Extended-Term Financing					205,876
9300	Interfund Transfers - IN		450,753			450,753
9400	Sale of or Compensation for Loss of Fixed Assets					
9710	Transfers from Component Units					
9720	Transfers from Primary Governments					
9910	Other Financing Sources Not Listed in the 9000 Series					
9990	Insurance Recoveries					
5120	Debt Service – Refunded Bonds					
5150	Bond Discounts					
5200	Interfund Transfers – Out					452,925
5300	Transfers Out to Component Units/Primary Governments					
Total Other Financing Sources (Uses)			\$4,730,753			\$4,483,704

Amounts Expressed in Whole Dollars		<u>General Fund</u> <u>(10)</u>	<u>Public Purpose Trust</u> <u>(27)</u>	<u>Other Compt Approved</u> <u>(28)</u>	<u>Athletic / Activity</u> <u>(29)</u>	<u>Capital Reserve</u> <u>(690.</u> <u>1850)</u> <u>(31)</u>
Special And Extraordinary Items						
9920	Special Items – Gains					
9930	Extraordinary Items – Gains					
5520	Special Items – Losses					
5530	Extraordinary Items – Losses					
Net Change In Fund Balances		(\$309,248)				
Fund Balance						
0001	Fund Balance - Beginning of Fiscal Year	6,182,631				
Fund Balance - End Of Year		\$5,873,383				

Amounts Expressed in Whole Dollars		<u>Capital Reserve (1431)</u> <u>(32)</u>	<u>Other Capital Projects</u> <u>Fund</u> <u>(39)</u>	<u>Debt Service</u> <u>(40)</u>	<u>Permanent</u> <u>(90)</u>	<u>Total Governmental</u> <u>Funds</u>
Special And Extraordinary Items						
9920	Special Items – Gains					
9930	Extraordinary Items – Gains					
5520	Special Items – Losses					
5530	Extraordinary Items – Losses					
Net Change In Fund Balances			\$224,368			(\$84,880)
Fund Balance						
0001	Fund Balance - Beginning of Fiscal Year		2,853,548			9,036,179
Fund Balance - End Of Year			\$3,077,916			\$8,951,299

LEA : 114064003 Kutztown Area SD

Printed 11/2/2018 1:00:10 PM

Amounts Expressed in Whole Dollars	<u>Food Service</u> <u>(51)</u>	<u>Child Care</u> <u>Operations</u> <u>(52)</u>	<u>Other Enterprise</u> <u>(58)</u>	<u>TOTAL</u>	<u>Internal Service</u> <u>(60)</u>
Assets And Deferred Outflows Of Resources					
Current Assets					
0100 Cash and Cash Equivalents	531,818			531,818	
0110 Investments					
0130 Due From Other Funds					
0141 Due From Other Governments					
0142 State Revenue Receivable	487			487	
0143 Federal Revenue Receivable	6,691			6,691	
0146 Due from Primary Government					
0147 Due from Component Unit					
0150 Other Receivables					
0170 Inventories	13,262			13,262	
0180 Prepaid Expenses (Expenditures)					
0190 Other Current Assets					
Total Current Assets	\$552,258			\$552,258	
Noncurrent Assets					
0211 Land					
0212 Site Improvements (Net)					
0220 Buildings and Building Improvements (Net)					
0230 Machinery, Equipment and Furniture (Net)	163,321			163,321	
0250 Construction in Progress					
0260 Long Term Prepayments					
0290 Other Noncurrent Assets					
Total Noncurrent Assets	\$163,321			\$163,321	
0910 Deferred Outflows of Resources	152,653			152,653	
Total Assets And Deferred Outflows Of Resources	\$868,232			\$868,232	

LEA : 114064003 Kutztown Area SD

Printed 11/2/2018 1:00:10 PM

Amounts Expressed in Whole Dollars	<u>Food Service</u> <u>(51)</u>	<u>Child Care</u> <u>Operations</u> <u>(52)</u>	<u>Other Enterprise</u> <u>(58)</u>	<u>TOTAL</u>	<u>Internal Service</u> <u>(60)</u>
Liabilities And Deferred Inflows Of Resources And Net Position					
Current Liabilities					
0400 Due to Other Funds	79,023			79,023	
0411 Due to Other Governments					
0413 Due to Component Unit					
0420 Accounts Payable	13			13	
0430 Contracts Payable					
0440 Current Portion of Long-Term Debt					
0450 Short-Term Payables					
0461 Accrued Salaries and Benefits					
0462 Payroll Deductions and Withholding					
0480 Unearned Revenues	10,817			10,817	
0490 Other Current Liabilities					
Total Current Liabilities	\$89,853			\$89,853	
Noncurrent Liabilities					
0510 Bonds Payable					
0520 Extended-Term Financing Agreements Payable					
0530 Lease-Purchase Obligations					
0540 Accumulated Compensated Absences					
0550 Authority Lease Obligations					
0560 Other Post-Employment Benefits (OPEB)	110,682			110,682	
0570 Net Pension Liability	848,102			848,102	
0599 Other Noncurrent Liabilities					
Total Noncurrent Liabilities	\$958,784			\$958,784	
Total Liabilities	\$1,048,637			\$1,048,637	
0950 Deferred Inflows of Resources	44,211			44,211	
Net Position					
0791 Net Investment in Capital Assets	163,321			163,321	
0008 Restricted Net Position (0792 – 0798)					
0799 Unrestricted Net Position	(387,937)			(387,937)	
Total Net Position	(\$224,616)			(\$224,616)	
Total Liabilities And Deferred Inflows Of Resources And Net Position	\$868,232			\$868,232	

Amounts Expressed in Whole Dollars	Food Service (51)	Child Care Operations (52)	Other Enterprise (58)	TOTAL	Internal Service (60)
Operating Revenues					
6600 Food Service Revenue	266,573			266,573	
0071 Charges for Services					
0072 Other Operating Revenue	25,087			25,087	
Total Operating Revenues	\$291,660			\$291,660	
Operating Expenses					
100 Personnel Services – Salaries	212,804			212,804	
200 Personnel Services – Employee Benefits	143,704			143,704	
300 Purchased Professional and Technical Services	2,043			2,043	
400 Purchased Property Services	1,047			1,047	
500 Other Purchased Services	14,103			14,103	
600 Supplies	262,511			262,511	
740 Depreciation	12,145			12,145	
810 Dues and Fees					
890 Miscellaneous Expenditures	3,300			3,300	
Total Operating Expenses	\$651,657			\$651,657	
Operating Income (Loss)	(\$359,997)			(\$359,997)	
Non Operating Revenues (Expenses)					
6500 Earnings on Investments					
6920 Contributions and Donations from Private Sources					
6930 Gains or Losses on Sale of Fixed Assets					
6991 Refunds of a Prior Year Expenditure					
7000 Revenue from State Sources	59,046			59,046	
8000 Revenue from Federal Sources	267,755			267,755	
820 Claims and Judgments Against the LEA					
830 Interest	(3,339)			(3,339)	
TOTAL Non Operating Revenues (Expenses)	\$330,140			\$330,140	
Income (Loss) Before Contributions And Transfers	(\$29,857)			(\$29,857)	

Amounts Expressed in Whole Dollars	<u>Food Service</u> <u>(51)</u>	<u>Child Care Operations</u> <u>(52)</u>	<u>Other Enterprise</u> <u>(58)</u>	<u>TOTAL</u>	<u>Internal Service</u> <u>(60)</u>
Contributions, Transfers, and Special and Extraordinary Items					
5200 Interfund Transfers – Out					
5300 Transfers Out to Component Units/Primary Governments					
5520 Special Items – Losses					
5530 Extraordinary Items – Losses					
9300 Interfund Transfers - IN	2,172			2,172	
9500 Capital Contributions					
9700 Transfers IN From Component Units/Primary Governments					
9920 Special Items – Gains					
9930 Extraordinary Items – Gains					
Change In Net Position	(\$27,685)			(\$27,685)	
0002 Net Position - Beginning of Fiscal Year	(196,931)			(196,931)	
0003 Accounting Changes / Residual Equity Transfers					
Net Position - End Of Year	(\$224,616)			(\$224,616)	

LEA : 114064003 Kutztown Area SD

Printed 11/2/2018 1:00:15 PM

Amounts Expressed in Whole Dollars	<u>Food Service</u> <u>(51)</u>	<u>Child Care Operations</u> <u>(52)</u>	<u>Other Enterprise</u> <u>(58)</u>	<u>TOTAL</u>	<u>Internal Service(60)</u>
Cash Flows From Operating Activities					
0011 Cash Receipts From Users	291,890			291,890	
0012 Cash Receipts From Assessments Made to Other Funds					
0013 Cash Receipts From Earnings on Investments					
0014 Cash Receipts From Other Operating Revenue					
0015 Cash Payments To Employees For Services	431,847			431,847	
0016 Cash Payments For Insurance Claims					
0017 Cash Payments To Suppliers For Goods and Services	237,095			237,095	
0018 Cash Payments For Other Operating Expenses					
Net Cash Provided By (Used For) Operating Activities	(\$377,052)			(\$377,052)	
Cash Flows From Non-Capital Financing Activities					
0021 Receipts From Local Sources - 6000					
0022 Receipts From State Sources - 7000	58,660			58,660	
0023 Receipts From Federal Sources -8000	215,469			215,469	
0024 Notes and Loans Received (Repaid)					
0025 Interest Paid on Notes/Loans - 5100-830					
0026 Operating Transfers In (Out)/Residual Equity Trans					
0027 Operating Transfers In (Out) Primary Government / Comp Unit	2,172			2,172	
0028 Receipts From Refund of Prior Year Expenditures - 6991					
0029 Special and Extraordinary Gains (losses)					
0030 Receipts from Insurance Recoveries -9990					
Net Cash Prov By (Used for) Non-Capital Financing Activities	\$276,301			\$276,301	
Cash Flows From Capital and Related Financing Activities					
0031 Payments For Fac Acq, Const, and Imp - 4000	(8,085)			(8,085)	
0032 Gain / (Loss) on Sale of Fixed Assets - 6930					
0033 Proceeds From Extended Term Financing - 9200					
0034 Principal Paid on Financing Agreements					
0035 Interest Paid on Financing Agreements - 5100-830					
0036 (Inc) Dec in Contributed Capital					
Net Cash Prov By (Used for) Capital and Related Financing Activities	(\$8,085)			(\$8,085)	
Cash Flows From Investing Activities					
0041 Earnings on Investments - 6500	3,339			3,339	
0042 Purchase of Inv Securities / Deposits to Inv Pools					
0043 Receipts From Investment Pool Withdrawals					
0044 Proceeds from Sale and Maturity of Inv Securities					

LEA : 114064003 Kutztown Area SD

Printed 11/2/2018 1:00:15 PM

0045 Loans Received (Paid)

Net Cash Prov By (Used for) Investing Activities	\$3,339	\$3,339
--	---------	---------

LEA : 114064003 Kutztown Area SD

Printed 11/2/2018 1:00:15 PM

	Food Service (51)	Child Care Operations (52)	Other Enterprise (58)	TOTAL	Internal Service (60)
Net Increase (Decrease) in Cash Flows	(105,497)			(105,497)	
0004 Cash and Cash Equivalents Beginning of Year	637,315			637,315	
Cash and Cash Equivalents at Year End	\$531,818			\$531,818	
Reconciliation of Operating Income (Loss) To Net Cash Provided by (Used For) Operating Activities					
0005 Operating Income (Loss) per REP	(359,997)			(359,997)	
Adjustments					
0051 Depreciation and Net Amortization	12,145			12,145	
0052 Provision for Uncollectible Accounts					
0053 Other Adjustments	46,880			46,880	
Effect of Changes in Assets, Liabilities, Deferred Outflows and Deferred Inflows					
0054 (Inc) Dec In Accounts Receivable (0120-0150)					
0055 Advances to Other Funds (0160)					
0056 (Inc) Dec in Inventories (0170)	1,364			1,364	
0057 (Inc) Dec in Prepaid Expenses (0180)					
0058 (Inc) Dec in Other Current or Noncurrent Assets					
0064 Deferred Outflows (0910)	13,247			13,247	
0059 Inc (Dec) in Accounts Payable (0400-0450)	(2,335)			(2,335)	
0060 Inc (Dec) in Accrued Salaries/Benefits (0461)					
0065 Inc (Dec) in Net Pension Liabilities (0570)	(19,229)			(19,229)	
0066 Inc (Dec) in Other Postemp Benefit Oblig (0560)	10,721			10,721	
0061 Inc (Dec) in Payroll Deductions/Withholding (0462)					
0062 Inc (Dec) in Unearned Revenue (0480)	230			230	
0063 Inc (Dec) in Other Current or Noncurrent Liabilities	(97,665)			(97,665)	
0067 Deferred Inflows (0950)	17,587			17,587	
Total Adjustments	(\$17,055)			(\$17,055)	
Cash Provided By (Used for) Total	(\$377,052)			(\$377,052)	

COMBINED STATEMENT OF CASH FLOWS
SCHEDULE OF NONCASH INVESTING, CAPITAL, AND FINANCING ACTIVITIES

Explanation of Transaction and Balance Sheet Effect	Amount
Total	

LEA : 114064003 Kutztown Area SD

Printed 11/2/2018 1:00:16 PM

Amounts Expressed in Whole Dollars	<u>Private Purpose Trust</u> <u>(71)</u>	<u>Investment Trust</u> <u>(72)</u>	<u>Pension Trust</u> <u>(73)</u>	<u>Activity</u> <u>(81)</u>
Assets And Deferred Outflows Of Resources				
Assets				
0100 Cash and Cash Equivalents	62,127			
0110 Investments				
0130 Due From Other Funds				
0147 Due from Component Unit				
0150 Other Receivables				
0170 Inventories				
0180 Prepaid Expenses (Expenditures)				
0190 Other Current Assets				
0220 Buildings and Building Improvements (Net)				
0230 Machinery, Equipment and Furniture (Net)				
Total Assets	\$62,127			
0910 Deferred Outflows of Resources				
Total Assets And Deferred Outflows Of Resources	\$62,127			

LEA : 114064003 Kutztown Area SD

Printed 11/2/2018 1:00:16 PM

Amounts Expressed in Whole Dollars		<u>Other Agency</u> <u>(89)</u>	<u>Discrete Component Units</u> <u>(98)</u>	<u>Discrete Component Units</u> <u>(99)</u>	<u>Total Fiduciary Funds</u>
Assets And Deferred Outflows Of Resources					
Assets					
0100	Cash and Cash Equivalents				62,127
0110	Investments				
0130	Due From Other Funds				
0147	Due from Component Unit				
0150	Other Receivables				
0170	Inventories				
0180	Prepaid Expenses (Expenditures)				
0190	Other Current Assets				
0220	Buildings and Building Improvements (Net)				
0230	Machinery, Equipment and Furniture (Net)				
Total Assets					\$62,127
0910	Deferred Outflows of Resources				
Total Assets And Deferred Outflows Of Resources					\$62,127

LEA : 114064003 Kutztown Area SD

Printed 11/2/2018 1:00:16 PM

Amounts Expressed in Whole Dollars	<u>Private Purpose Trust</u> (71)	<u>Investment Trust</u> (72)	<u>Pension Trust</u> (73)	<u>Activity</u> (81)
Liabilities, Deferred Inflows Of Resources And Net Position				
Liabilities				
0400 Due to Other Funds				
0411 Due to Other Governments				
0412 Due to Primary Government				
0413 Due to Component Unit				
0420 Accounts Payable				
0430 Contracts Payable				
0450 Short-Term Payables				
0461 Accrued Salaries and Benefits				
0462 Payroll Deductions and Withholding				
0480 Unearned Revenues				
0490 Other Current Liabilities	62,127			
Total Liabilities	\$62,127			
0950 Deferred Inflows of Resources				
Net Position				
0791 Net Investment in Capital Assets				
0009 Restricted Net Position (0792 – 0798)				
0799 Unrestricted Net Position				
Total Net Position				
Total Liabilities, Deferred Inflows Of Resources And Net Position	\$62,127			

LEA : 114064003 Kutztown Area SD

Printed 11/2/2018 1:00:16 PM

Amounts Expressed in Whole Dollars

<u>Other Agency</u> <u>(89)</u>	<u>Discrete Component Units</u> <u>(98)</u>	<u>Discrete Component Units</u> <u>(99)</u>	<u>Total Fiduciary Funds</u>
------------------------------------	--	--	------------------------------

Liabilities, Deferred Inflows Of Resources And Net Position

Liabilities

0400	Due to Other Funds			
0411	Due to Other Governments			
0412	Due to Primary Government			
0413	Due to Component Unit			
0420	Accounts Payable			
0430	Contracts Payable			
0450	Short-Term Payables			
0461	Accrued Salaries and Benefits			
0462	Payroll Deductions and Withholding			
0480	Unearned Revenues			
0490	Other Current Liabilities			62,127
Total Liabilities				\$62,127

0950 Deferred Inflows of Resources

Net Position

0791	Net Investment in Capital Assets			
0009	Restricted Net Position (0792 – 0798)			
0799	Unrestricted Net Position			
Total Net Position				
Total Liabilities, Deferred Inflows Of Resources And Net Position				\$62,127

	Revenue Reported In Current Year	Current Year Tax Accrual	Prior Year Tax Accrual	Taxes Collected In Current Year
Revenue from Local Sources				
6111 Current Real Estate Taxes	19,022,334.77			19,022,334.77
6112 Interim Real Estate Taxes	502,852.09			502,852.09
6113 Public Utility Realty Taxes	22,375.48			22,375.48
6114 Payments in Lieu of Current Taxes - State / Local	8,231.34			8,231.34
6120 Current Per Capita Taxes, Section 679	32,608.50			32,608.50
6141 Current Act 511 Per Capita Taxes	32,608.50			32,608.50
6143 Current Act 511 Local Services Taxes	35,107.39			35,107.39
6151 Current Act 511 Earned Income Taxes	1,617,792.32			1,617,792.32
6153 Current Act 511 Real Estate Transfer Taxes	232,428.80			232,428.80
6154 Current Act 511 Amusement Taxes	37,232.59			37,232.59
6411 Delinquent Real Estate Taxes	757,264.22			757,264.22
6420 Delinquent Per Capita Taxes, Section 679	4,022.74			4,022.74
6440 Delinquent Local Enabling Taxes - Flat Rate Assessments	4,022.76			4,022.76
6500 Earnings on Investments	116,846.05			
6832 Federal IDEA Revenue Received as Pass Through	253,725.58			
6910 Rentals	81,399.91			
6920 Contributions and Donations from Private Sources	16,940.40			
6942 Summer School Tuition	3,510.00			
6949 Other Tuition from Patrons	55,023.97			
6991 Refunds of a Prior Year Expenditure	703.39			
6999 Other Revenues Not Specified Above	49,919.65			
TOTAL Revenue from Local Sources	\$22,886,950.45			\$22,308,881.50

	Revenue Reported In Current Year			
Revenue from State Sources				
7110 Basic Education Funding	3,370,979.88			
7160 Tuition for Orphans Subsidy	137,530.24			
7220 Vocational Education	27,155.57			
7271 Special Education funds for School-Aged Pupils	912,421.24			
7299 Program Revenues Not Listed Previously in the 7200 Series	977.14			
7311 Pupil Transportation Subsidy	676,018.46			
7320 Rental and Sinking Fund Payments / Building Reimbursement Subsidy	218,471.94			
7330 Health Services (Medical, Dental, Nurse, Act 25)	24,851.49			
7340 State Property Tax Reduction Allocation	611,464.53			
7505 Ready to Learn Block Grant	140,805.00			
7509 Supplemental Equipment Grants	4,992.59			
7599 Other State Revenue Not Listed Elsewhere in the 7000 Series	13,900.00			
7810 State Share of Social Security and Medicare Taxes	494,303.79			
7820 State Share of Retirement Contributions	2,184,740.39			
TOTAL Revenue from State Sources	\$8,818,612.26			

	Revenue Reported In Current Year			
<u>Revenue from Federal Sources</u>				
8514 NCLB, Title I - Improving the Academic Achievement of the Disadvantaged	193,336.00			
8515 NCLB, Title II - Preparing, Training and Recruiting High Quality Teachers and Principals	46,078.00			
8517 NCLB, Title IV - 21St Century Schools	10,000.00			
8820 Medical Assistance Reimbursement for Administrative Claiming (Quarterly) Program	2,343.34			
TOTAL Revenue from Federal Sources	\$251,757.34			

					Revenue Reported <u>In Current Year</u>			
<u>Other Financing Sources</u>								
9290	Other Extended-Term Financing Proceeds				205,875.90			
TOTAL Other Financing Sources					\$205,875.90			
TOTAL FROM ALL SOURCES					\$32,163,195.95			\$22,308,881.50

Revenue from Local Sources	22,886,950.45
Revenue from State Sources	8,818,612.26
Revenue from Federal Sources	251,757.34
Other Financing Sources	205,875.90
TOTAL FROM ALL SOURCES	\$32,163,195.95

LEA : 114064003 Kutztown Area SD

Printed 11/2/2018 1:00:20 PM

General Fund (10)

1000 Instruction	Total
100 <u>Personnel Services – Salaries</u>	
100 Personnel Services – Salaries	9,624,560.26
Total Personnel Services – Salaries	\$9,624,560.26
200 <u>Personnel Services – Employee Benefits</u>	
210 Group Insurance – Contracted Provider	1,729,671.70
220 Social Security Contributions	710,018.13
230 PSERS Retirement Contributions	3,062,938.38
250 Unemployment Compensation	7,019.34
260 Workers' Compensation	66,994.06
299 All Other Employee Benefits	64,403.64
Total Personnel Services – Employee Benefits	\$5,641,045.25
300 <u>Purchased Professional and Technical Services</u>	
322 Professional Educational Services – Ius	23,887.35
323 Professional Educational Services – Other Educational Agencies	6,423.40
329 Professional Educational Services – Other	314,500.94
390 Other Purchased Professional and Technical Services	13,425.00
Total Purchased Professional and Technical Services	\$358,236.69
400 <u>Purchased Property Services</u>	
430 Repairs and Maintenance Services	15,548.93
440 Rentals	24,429.53
Total Purchased Property Services	\$39,978.46
500 <u>Other Purchased Services</u>	
510 Student Transportation Services	30,168.35
561 Tuition To Other School Districts Within the State	190,401.58
562 Tuition To Pennsylvania Charter Schools	1,472,314.62
563 Tuition To Nonpublic Schools	61,705.00
564 Tuition To Career and Technology Centers	687,866.46
567 Tuition To Approved Private Schools (APS) and PA Chartered Schools for the Deaf and Blind	2,088.66
569 Tuition – Other	89,122.82
580 Travel	1,510.61
Total Other Purchased Services	\$2,535,178.10
600 <u>Supplies</u>	
610 General Supplies	239,206.52
630 Food	5.65
640 Books and Periodicals	42,954.23
Total Supplies	\$282,166.40
700 <u>Property</u>	
752 Capital Equipment – Original and Additional	27,486.47
758 Capitalized Technology Software - Original	70,253.84
Total Property	\$97,740.31
Total 1000 Instruction	\$18,578,905.47

LEA : 114064003 Kutztown Area SD

Printed 11/2/2018 1:00:20 PM

General Fund (10)

1100 Regular Programs – Elementary / Secondary	Elementary	Secondary	Federal	Total
100 Personnel Services – Salaries				
100 Personnel Services – Salaries	4,018,001.52	2,872,220.88	172,701.80	7,062,924.20
Total Personnel Services – Salaries	\$4,018,001.52	\$2,872,220.88	\$172,701.80	\$7,062,924.20
200 Personnel Services – Employee Benefits				
210 Group Insurance – Contracted Provider	681,179.24	436,144.87		1,117,324.11
220 Social Security Contributions	298,040.74	213,773.72	11,842.77	523,657.23
230 PSERS Retirement Contributions	1,304,772.81	917,353.40	25,941.00	2,248,067.21
250 Unemployment Compensation	3,210.84	2,803.50		6,014.34
260 Workers' Compensation	28,755.62	20,330.32		49,085.94
299 All Other Employee Benefits	13,173.99	45,229.65		58,403.64
Total Personnel Services – Employee Benefits	\$2,329,133.24	\$1,635,635.46	\$37,783.77	\$4,002,552.47
300 Purchased Professional and Technical Services				
322 Professional Educational Services – Ius	450.00	2,528.23		2,978.23
323 Professional Educational Services – Other Educational Agencies		6,423.40		6,423.40
329 Professional Educational Services – Other	160,970.91	149,634.19		310,605.10
390 Other Purchased Professional and Technical Services	1,400.00	250.00		1,650.00
Total Purchased Professional and Technical Services	\$162,820.91	\$158,835.82		\$321,656.73
400 Purchased Property Services				
430 Repairs and Maintenance Services	8,192.83	6,446.10		14,638.93
440 Rentals	9,152.99	15,276.54		24,429.53
Total Purchased Property Services	\$17,345.82	\$21,722.64		\$39,068.46
500 Other Purchased Services				
510 Student Transportation Services	15,378.28	14,790.07		30,168.35
561 Tuition To Other School Districts Within the State		146.08		146.08
562 Tuition To Pennsylvania Charter Schools	608,023.50	492,339.48		1,100,362.98
569 Tuition – Other	44,561.41	44,561.41		89,122.82
580 Travel	1,336.43			1,336.43
Total Other Purchased Services	\$669,299.62	\$551,837.04		\$1,221,136.66
600 Supplies				
610 General Supplies	94,591.57	114,614.43	7,666.50	216,872.50
630 Food			5.65	5.65
640 Books and Periodicals	15,053.83	23,160.87		38,214.70
Total Supplies	\$109,645.40	\$137,775.30	\$7,672.15	\$255,092.85
700 Property				
752 Capital Equipment – Original and Additional	15,647.19	10,536.32		26,183.51
758 Capitalized Technology Software - Original	37,536.17	32,717.67		70,253.84
Total Property	\$53,183.36	\$43,253.99		\$96,437.35
Total 1100 Regular Programs – Elementary / Secondary	\$7,359,429.87	\$5,421,281.13	\$218,157.72	\$12,998,868.72

LEA : 114064003 Kutztown Area SD

Printed 11/2/2018 1:00:20 PM

General Fund (10)

1110 Regular Programs	Elementary	Secondary	Federal	Total
100 <u>Personnel Services – Salaries</u>				
100 Personnel Services – Salaries	4,018,001.52	2,872,220.88		6,890,222.40
Total Personnel Services – Salaries	\$4,018,001.52	\$2,872,220.88		\$6,890,222.40
200 <u>Personnel Services – Employee Benefits</u>				
210 Group Insurance – Contracted Provider	681,179.24	436,144.87		1,117,324.11
220 Social Security Contributions	298,040.74	213,773.72		511,814.46
230 PSERS Retirement Contributions	1,304,772.81	917,353.40		2,222,126.21
250 Unemployment Compensation	3,210.84	2,803.50		6,014.34
260 Workers' Compensation	28,755.62	20,330.32		49,085.94
299 All Other Employee Benefits	13,173.99	45,229.65		58,403.64
Total Personnel Services – Employee Benefits	\$2,329,133.24	\$1,635,635.46		\$3,964,768.70
300 <u>Purchased Professional and Technical Services</u>				
322 Professional Educational Services – Ius	450.00	2,528.23		2,978.23
323 Professional Educational Services – Other Educational Agencies		6,423.40		6,423.40
329 Professional Educational Services – Other	160,970.91	149,634.19		310,605.10
390 Other Purchased Professional and Technical Services	1,400.00	250.00		1,650.00
Total Purchased Professional and Technical Services	\$162,820.91	\$158,835.82		\$321,656.73
400 <u>Purchased Property Services</u>				
430 Repairs and Maintenance Services	8,192.83	6,446.10		14,638.93
440 Rentals	9,152.99	15,276.54		24,429.53
Total Purchased Property Services	\$17,345.82	\$21,722.64		\$39,068.46
500 <u>Other Purchased Services</u>				
510 Student Transportation Services	15,378.28	14,790.07		30,168.35
561 Tuition To Other School Districts Within the State		146.08		146.08
562 Tuition To Pennsylvania Charter Schools	608,023.50	492,339.48		1,100,362.98
569 Tuition – Other	44,561.41	44,561.41		89,122.82
580 Travel	1,336.43			1,336.43
Total Other Purchased Services	\$669,299.62	\$551,837.04		\$1,221,136.66
600 <u>Supplies</u>				
610 General Supplies	94,591.57	114,614.43		209,206.00
640 Books and Periodicals	15,053.83	23,160.87		38,214.70
Total Supplies	\$109,645.40	\$137,775.30		\$247,420.70
700 <u>Property</u>				
752 Capital Equipment – Original and Additional	15,647.19	10,536.32		26,183.51
758 Capitalized Technology Software - Original	37,536.17	32,717.67		70,253.84
Total Property	\$53,183.36	\$43,253.99		\$96,437.35
Total 1110 Regular Programs	\$7,359,429.87	\$5,421,281.13		\$12,780,711.00

LEA : 114064003 Kutztown Area SD

Printed 11/2/2018 1:00:20 PM

General Fund (10)					
1190 Federally-Funded Regular Programs		<u>Elementary</u>	<u>Secondary</u>	<u>Federal</u>	<u>Total</u>
100 <u>Personnel Services – Salaries</u>					
100 Personnel Services – Salaries				172,701.80	172,701.80
Total Personnel Services – Salaries				\$172,701.80	\$172,701.80
200 <u>Personnel Services – Employee Benefits</u>					
220 Social Security Contributions				11,842.77	11,842.77
230 PSERS Retirement Contributions				25,941.00	25,941.00
Total Personnel Services – Employee Benefits				\$37,783.77	\$37,783.77
600 <u>Supplies</u>					
610 General Supplies				7,666.50	7,666.50
630 Food				5.65	5.65
Total Supplies				\$7,672.15	\$7,672.15
Total 1190 Federally-Funded Regular Programs				\$218,157.72	\$218,157.72

LEA : 114064003 Kutztown Area SD

Printed 11/2/2018 1:00:20 PM

General Fund (10)

1200 Special Programs – Elementary / Secondary	Elementary	Secondary	Federal	Total
100 Personnel Services – Salaries				
100 Personnel Services – Salaries	1,124,331.46	848,495.05	200,331.94	2,173,158.45
Total Personnel Services – Salaries	\$1,124,331.46	\$848,495.05	\$200,331.94	\$2,173,158.45
200 Personnel Services – Employee Benefits				
210 Group Insurance – Contracted Provider	307,236.16	254,659.19		561,895.35
220 Social Security Contributions	81,512.11	62,550.56	13,265.18	157,327.85
230 PSERS Retirement Contributions	364,043.44	294,208.55	32,624.06	690,876.05
250 Unemployment Compensation	1,005.00			1,005.00
260 Workers' Compensation	8,099.62	6,994.15		15,093.77
299 All Other Employee Benefits	1,030.00	4,970.00		6,000.00
Total Personnel Services – Employee Benefits	\$762,926.33	\$623,382.45	\$45,889.24	\$1,432,198.02
300 Purchased Professional and Technical Services				
322 Professional Educational Services – Ius	14,295.00	6,614.12		20,909.12
390 Other Purchased Professional and Technical Services	5,438.00	6,337.00		11,775.00
Total Purchased Professional and Technical Services	\$19,733.00	\$12,951.12		\$32,684.12
400 Purchased Property Services				
430 Repairs and Maintenance Services		910.00		910.00
Total Purchased Property Services		\$910.00		\$910.00
500 Other Purchased Services				
561 Tuition To Other School Districts Within the State	3,223.18	187,032.32		190,255.50
562 Tuition To Pennsylvania Charter Schools	226,369.91	145,581.73		371,951.64
563 Tuition To Nonpublic Schools	61,705.00			61,705.00
567 Tuition To Approved Private Schools (APS) and PA Chartered Schools for the Deaf and Blind		2,088.66		2,088.66
580 Travel	108.63	65.55		174.18
Total Other Purchased Services	\$291,406.72	\$334,768.26		\$626,174.98
600 Supplies				
610 General Supplies	5,678.37	4,680.49	2,500.00	12,858.86
640 Books and Periodicals	3,475.01	1,264.52		4,739.53
Total Supplies	\$9,153.38	\$5,945.01	\$2,500.00	\$17,598.39
700 Property				
752 Capital Equipment – Original and Additional	675.06	627.90		1,302.96
Total Property	\$675.06	\$627.90		\$1,302.96
Total 1200 Special Programs – Elementary / Secondary	\$2,208,225.95	\$1,827,079.79	\$248,721.18	\$4,284,026.92

LEA : 114064003 Kutztown Area SD

Printed 11/2/2018 1:00:20 PM

General Fund (10)				
1210 Life Skills Support	<u>Elementary</u>	<u>Secondary</u>	<u>Federal</u>	<u>Total</u>
100 <u>Personnel Services – Salaries</u>				
100 Personnel Services – Salaries	128,544.29	54,516.05	137,725.86	320,786.20
Total Personnel Services – Salaries	\$128,544.29	\$54,516.05	\$137,725.86	\$320,786.20
200 <u>Personnel Services – Employee Benefits</u>				
210 Group Insurance – Contracted Provider	54,083.24	16,783.40		70,866.64
220 Social Security Contributions	9,154.18	4,890.04	9,287.89	23,332.11
230 PSERS Retirement Contributions	46,602.98	32,865.93	22,428.69	101,897.60
260 Workers' Compensation	1,103.24	1,130.98		2,234.22
Total Personnel Services – Employee Benefits	\$110,943.64	\$55,670.35	\$31,716.58	\$198,330.57
500 <u>Other Purchased Services</u>				
561 Tuition To Other School Districts Within the State	2,000.00	128,529.41		130,529.41
567 Tuition To Approved Private Schools (APS) and PA Chartered Schools for the Deaf and Blind		2,088.66		2,088.66
580 Travel	15.12	15.12		30.24
Total Other Purchased Services	\$2,015.12	\$130,633.19		\$132,648.31
600 <u>Supplies</u>				
610 General Supplies	1,668.83	3,413.64		5,082.47
640 Books and Periodicals	701.75	752.00		1,453.75
Total Supplies	\$2,370.58	\$4,165.64		\$6,536.22
Total 1210 Life Skills Support	\$243,873.63	\$244,985.23	\$169,442.44	\$658,301.30

LEA : 114064003 Kutztown Area SD

Printed 11/2/2018 1:00:20 PM

General Fund (10)				
1220 Sensory Support	<u>Elementary</u>	<u>Secondary</u>	<u>Federal</u>	<u>Total</u>
100 <u>Personnel Services – Salaries</u>				
100 Personnel Services – Salaries	79,576.50	35,741.07		115,317.57
Total Personnel Services – Salaries	\$79,576.50	\$35,741.07		\$115,317.57
200 <u>Personnel Services – Employee Benefits</u>				
210 Group Insurance – Contracted Provider	2,220.55	2,084.33		4,304.88
220 Social Security Contributions	6,066.04	2,712.82		8,778.86
230 PSERS Retirement Contributions	24,019.20	11,007.95		35,027.15
260 Workers' Compensation	537.86	239.45		777.31
Total Personnel Services – Employee Benefits	\$32,843.65	\$16,044.55		\$48,888.20
300 <u>Purchased Professional and Technical Services</u>				
322 Professional Educational Services – Ius	14,241.00	6,614.12		20,855.12
390 Other Purchased Professional and Technical Services	5,438.00	6,337.00		11,775.00
Total Purchased Professional and Technical Services	\$19,679.00	\$12,951.12		\$32,630.12
400 <u>Purchased Property Services</u>				
430 Repairs and Maintenance Services		910.00		910.00
Total Purchased Property Services		\$910.00		\$910.00
600 <u>Supplies</u>				
610 General Supplies	770.00	770.00		1,540.00
Total Supplies	\$770.00	\$770.00		\$1,540.00
Total 1220 Sensory Support	\$132,869.15	\$66,416.74		\$199,285.89

LEA : 114064003 Kutztown Area SD

Printed 11/2/2018 1:00:20 PM

General Fund (10)				
1230 Emotional Support	<u>Elementary</u>	<u>Secondary</u>	<u>Federal</u>	<u>Total</u>
300 <u>Purchased Professional and Technical Services</u>				
322 Professional Educational Services – lus	54.00			54.00
Total Purchased Professional and Technical Services	\$54.00			\$54.00
500 <u>Other Purchased Services</u>				
563 Tuition To Nonpublic Schools	61,705.00			61,705.00
Total Other Purchased Services	\$61,705.00			\$61,705.00
600 <u>Supplies</u>				
640 Books and Periodicals	63.85			63.85
Total Supplies	\$63.85			\$63.85
Total 1230 Emotional Support	\$61,822.85			\$61,822.85

LEA : 114064003 Kutztown Area SD

Printed 11/2/2018 1:00:20 PM

General Fund (10)				
1240 Academic Support	<u>Elementary</u>	<u>Secondary</u>	<u>Federal</u>	<u>Total</u>
100 <u>Personnel Services – Salaries</u>				
100 Personnel Services – Salaries	916,210.67	758,237.93	62,606.08	1,737,054.68
Total Personnel Services – Salaries	\$916,210.67	\$758,237.93	\$62,606.08	\$1,737,054.68
200 <u>Personnel Services – Employee Benefits</u>				
210 Group Insurance – Contracted Provider	250,932.37	235,791.46		486,723.83
220 Social Security Contributions	66,291.89	54,947.70	3,977.29	125,216.88
230 PSERS Retirement Contributions	293,421.26	250,334.67	10,195.37	553,951.30
250 Unemployment Compensation	1,005.00			1,005.00
260 Workers' Compensation	6,458.52	5,623.72		12,082.24
299 All Other Employee Benefits	1,030.00	4,970.00		6,000.00
Total Personnel Services – Employee Benefits	\$619,139.04	\$551,667.55	\$14,172.66	\$1,184,979.25
500 <u>Other Purchased Services</u>				
561 Tuition To Other School Districts Within the State	1,223.18	58,502.91		59,726.09
562 Tuition To Pennsylvania Charter Schools	226,369.91	145,581.73		371,951.64
580 Travel	93.51	50.43		143.94
Total Other Purchased Services	\$227,686.60	\$204,135.07		\$431,821.67
600 <u>Supplies</u>				
610 General Supplies	3,239.54	496.85	2,500.00	6,236.39
640 Books and Periodicals	2,709.41	512.52		3,221.93
Total Supplies	\$5,948.95	\$1,009.37	\$2,500.00	\$9,458.32
700 <u>Property</u>				
752 Capital Equipment – Original and Additional	675.06	627.90		1,302.96
Total Property	\$675.06	\$627.90		\$1,302.96
Total 1240 Academic Support	\$1,769,660.32	\$1,515,677.82	\$79,278.74	\$3,364,616.88

LEA : 114064003 Kutztown Area SD

Printed 11/2/2018 1:00:20 PM

General Fund (10)

1241 Learning Support – Public	Elementary	Secondary	Federal	Total
100 <u>Personnel Services – Salaries</u>				
100 Personnel Services – Salaries	817,870.52	693,594.33	62,606.08	1,574,070.93
Total Personnel Services – Salaries	\$817,870.52	\$693,594.33	\$62,606.08	\$1,574,070.93
200 <u>Personnel Services – Employee Benefits</u>				
210 Group Insurance – Contracted Provider	238,522.99	232,763.16		471,286.15
220 Social Security Contributions	58,943.79	50,046.85	3,977.29	112,967.93
230 PSERS Retirement Contributions	261,392.03	229,280.05	10,195.37	500,867.45
250 Unemployment Compensation	1,005.00			1,005.00
260 Workers' Compensation	5,797.43	5,189.25		10,986.68
299 All Other Employee Benefits		4,455.00		4,455.00
Total Personnel Services – Employee Benefits	\$565,661.24	\$521,734.31	\$14,172.66	\$1,101,568.21
500 <u>Other Purchased Services</u>				
561 Tuition To Other School Districts Within the State	1,223.18	58,502.91		59,726.09
562 Tuition To Pennsylvania Charter Schools	226,369.91	145,581.73		371,951.64
580 Travel	37.87	22.61		60.48
Total Other Purchased Services	\$227,630.96	\$204,107.25		\$431,738.21
600 <u>Supplies</u>				
610 General Supplies	2,960.88	309.85	2,500.00	5,770.73
640 Books and Periodicals	2,646.44	512.52		3,158.96
Total Supplies	\$5,607.32	\$822.37	\$2,500.00	\$8,929.69
700 <u>Property</u>				
752 Capital Equipment – Original and Additional	616.06	627.90		1,243.96
Total Property	\$616.06	\$627.90		\$1,243.96
Total 1241 Learning Support – Public	\$1,617,386.10	\$1,420,886.16	\$79,278.74	\$3,117,551.00

LEA : 114064003 Kutztown Area SD

Printed 11/2/2018 1:00:20 PM

General Fund (10)				
1243 Gifted Support	<u>Elementary</u>	<u>Secondary</u>	<u>Federal</u>	<u>Total</u>
100 <u>Personnel Services – Salaries</u>				
100 Personnel Services – Salaries	98,340.15	64,643.60		162,983.75
Total Personnel Services – Salaries	\$98,340.15	\$64,643.60		\$162,983.75
200 <u>Personnel Services – Employee Benefits</u>				
210 Group Insurance – Contracted Provider	12,409.38	3,028.30		15,437.68
220 Social Security Contributions	7,348.10	4,900.85		12,248.95
230 PSERS Retirement Contributions	32,029.23	21,054.62		53,083.85
260 Workers' Compensation	661.09	434.47		1,095.56
299 All Other Employee Benefits	1,030.00	515.00		1,545.00
Total Personnel Services – Employee Benefits	\$53,477.80	\$29,933.24		\$83,411.04
500 <u>Other Purchased Services</u>				
580 Travel	55.64	27.82		83.46
Total Other Purchased Services	\$55.64	\$27.82		\$83.46
600 <u>Supplies</u>				
610 General Supplies	278.66	187.00		465.66
640 Books and Periodicals	62.97			62.97
Total Supplies	\$341.63	\$187.00		\$528.63
700 <u>Property</u>				
752 Capital Equipment – Original and Additional	59.00			59.00
Total Property	\$59.00			\$59.00
Total 1243 Gifted Support	\$152,274.22	\$94,791.66		\$247,065.88

LEA : 114064003 Kutztown Area SD

Printed 11/2/2018 1:00:20 PM

General Fund (10)

1300 Vocational Education

	Elementary	Secondary	Federal	Total
100 <u>Personnel Services – Salaries</u>				
100 Personnel Services – Salaries		280,077.36		280,077.36
Total Personnel Services – Salaries		\$280,077.36		\$280,077.36
200 <u>Personnel Services – Employee Benefits</u>				
210 Group Insurance – Contracted Provider		35,575.78		35,575.78
220 Social Security Contributions		20,897.83		20,897.83
230 PSERS Retirement Contributions		88,689.14		88,689.14
260 Workers' Compensation		2,126.35		2,126.35
Total Personnel Services – Employee Benefits		\$147,289.10		\$147,289.10
500 <u>Other Purchased Services</u>				
564 Tuition To Career and Technology Centers		687,866.46		687,866.46
Total Other Purchased Services		\$687,866.46		\$687,866.46
600 <u>Supplies</u>				
610 General Supplies		9,475.16		9,475.16
Total Supplies		\$9,475.16		\$9,475.16
Total 1300 Vocational Education		\$1,124,708.08		\$1,124,708.08

LEA : 114064003 Kutztown Area SD

Printed 11/2/2018 1:00:20 PM

General Fund (10)

1400 Other Instructional Programs – Elementary / Secondary	<u>Elementary</u>	<u>Secondary</u>	<u>Federal</u>	<u>Total</u>
100 <u>Personnel Services – Salaries</u>				
100 Personnel Services – Salaries	15,045.25	93,355.00		108,400.25
Total Personnel Services – Salaries	\$15,045.25	\$93,355.00		\$108,400.25
200 <u>Personnel Services – Employee Benefits</u>				
210 Group Insurance – Contracted Provider		14,876.46		14,876.46
220 Social Security Contributions	1,150.98	6,984.24		8,135.22
230 PSERS Retirement Contributions	4,900.23	30,405.75		35,305.98
260 Workers' Compensation	84.67	603.33		688.00
Total Personnel Services – Employee Benefits	\$6,135.88	\$52,869.78		\$59,005.66
Total 1400 Other Instructional Programs – Elementary / Secondary	\$21,181.13	\$146,224.78		\$167,405.91

LEA : 114064003 Kutztown Area SD

Printed 11/2/2018 1:00:20 PM

General Fund (10)				
1420 Summer School	<u>Elementary</u>	<u>Secondary</u>	<u>Federal</u>	<u>Total</u>
100 <u>Personnel Services – Salaries</u>				
100 Personnel Services – Salaries	15,045.25	3,575.00		18,620.25
Total Personnel Services – Salaries	\$15,045.25	\$3,575.00		\$18,620.25
200 <u>Personnel Services – Employee Benefits</u>				
220 Social Security Contributions	1,150.98	273.46		1,424.44
230 PSERS Retirement Contributions	4,900.23	1,164.36		6,064.59
260 Workers’ Compensation	84.67			84.67
Total Personnel Services – Employee Benefits	\$6,135.88	\$1,437.82		\$7,573.70
Total 1420 Summer School	\$21,181.13	\$5,012.82		\$26,193.95

LEA : 114064003 Kutztown Area SD

Printed 11/2/2018 1:00:20 PM

General Fund (10)

1440 Alternative Regular Education Programs	<u>Elementary</u>	<u>Secondary</u>	<u>Federal</u>	<u>Total</u>
100 <u>Personnel Services – Salaries</u>				
100 Personnel Services – Salaries		89,780.00		89,780.00
Total Personnel Services – Salaries		\$89,780.00		\$89,780.00
200 <u>Personnel Services – Employee Benefits</u>				
210 Group Insurance – Contracted Provider		14,876.46		14,876.46
220 Social Security Contributions		6,710.78		6,710.78
230 PSERS Retirement Contributions		29,241.39		29,241.39
260 Workers' Compensation		603.33		603.33
Total Personnel Services – Employee Benefits		\$51,431.96		\$51,431.96
Total 1440 Alternative Regular Education Programs		\$141,211.96		\$141,211.96

LEA : 114064003 Kutztown Area SD

Printed 11/2/2018 1:00:20 PM

General Fund (10)

1442 Alternative Education Programs	<u>Elementary</u>	<u>Secondary</u>	<u>Federal</u>	<u>Total</u>
100 <u>Personnel Services – Salaries</u>				
100 Personnel Services – Salaries		89,780.00		89,780.00
Total Personnel Services – Salaries		\$89,780.00		\$89,780.00
200 <u>Personnel Services – Employee Benefits</u>				
210 Group Insurance – Contracted Provider		14,876.46		14,876.46
220 Social Security Contributions		6,710.78		6,710.78
230 PSERS Retirement Contributions		29,241.39		29,241.39
260 Workers' Compensation		603.33		603.33
Total Personnel Services – Employee Benefits		\$51,431.96		\$51,431.96
Total 1442 Alternative Education Programs		\$141,211.96		\$141,211.96

LEA : 114064003 Kutztown Area SD

Printed 11/2/2018 1:00:20 PM

General Fund (10)

1600 Adult Education Programs

<u>Elementary</u>	<u>Secondary</u>	<u>Federal</u>	<u>Total</u>
-------------------	------------------	----------------	--------------

300 Purchased Professional and Technical Services

329 Professional Educational Services – Other			3,895.84
---	--	--	----------

Total Purchased Professional and Technical Services			\$3,895.84
--	--	--	-------------------

Total 1600 Adult Education Programs			\$3,895.84
--	--	--	-------------------

LEA : 114064003 Kutztown Area SD

Printed 11/2/2018 1:00:23 PM

General Fund (10)

2000 Support Services		Total
100 Personnel Services – Salaries		
100 Personnel Services – Salaries		3,806,941.81
Total Personnel Services – Salaries		\$3,806,941.81
200 Personnel Services – Employee Benefits		
210 Group Insurance – Contracted Provider		1,003,375.89
220 Social Security Contributions		280,641.82
230 PSERS Retirement Contributions		1,200,809.59
250 Unemployment Compensation		15,012.00
260 Workers' Compensation		27,890.28
299 All Other Employee Benefits		57,639.64
Total Personnel Services – Employee Benefits		\$2,585,369.22
300 Purchased Professional and Technical Services		
310 Official / Administrative Services		33,598.68
323 Professional Educational Services – Other Educational Agencies		35,232.44
324 Professional Educational Services – Employee Training and Development Services		30,636.48
329 Professional Educational Services – Other		14,905.40
330 Other Professional Services		202,907.55
340 Technical Services		102,803.04
350 Security / Safety Services		10,027.66
390 Other Purchased Professional and Technical Services		102,541.50
Total Purchased Professional and Technical Services		\$532,652.75
400 Purchased Property Services		
410 Cleaning Services		128,987.10
420 Utility Services		555,488.49
430 Repairs and Maintenance Services		246,509.47
440 Rentals		6,599.74
Total Purchased Property Services		\$937,584.80
500 Other Purchased Services		
513 Contracted Carriers		959,610.76
516 Student Transportation Services From the IU		7,923.12
519 Student Transportation Services From Other Sources		166,660.37
520 Insurance – General		3,243.25
521 Fire Insurance		69,214.00
522 Automotive Liability Insurance		12,540.00
523 General Property and Liability Insurance		17,914.00
530 Communications		61,311.81
549 Other Advertising/Public Relations		6,422.21
580 Travel		33,932.03
595 IU Payments By Withholding		27,487.85
599 Other Miscellaneous Purchased Services		14,406.41
Total Other Purchased Services		\$1,380,665.81
600 Supplies		
610 General Supplies		325,894.41
620 Energy		169,137.69

LEA : 114064003 Kutztown Area SD

Printed 11/2/2018 1:00:23 PM

General Fund (10)

2000 Support Services

Total

600 <u>Supplies</u>	
630 Food	7,990.03
640 Books and Periodicals	66,647.25
Total Supplies	\$569,669.38
700 <u>Property</u>	
752 Capital Equipment – Original and Additional	19,507.83
758 Capitalized Technology Software - Original	35,651.45
762 Capitalized Equipment - Replacement	4,000.00
Total Property	\$59,159.28
800 <u>Other Objects</u>	
810 Dues and Fees	29,803.16
Total Other Objects	\$29,803.16
Total 2000 Support Services	\$9,901,846.21

LEA : 114064003 Kutztown Area SD

Printed 11/2/2018 1:00:23 PM

General Fund (10)				
2100 Support Services – Students	<u>Elementary</u>	<u>Secondary</u>	<u>Federal</u>	<u>Total</u>
100 <u>Personnel Services – Salaries</u>				
100 Personnel Services – Salaries	265,223.99	365,889.88		631,113.87
Total Personnel Services – Salaries	\$265,223.99	\$365,889.88		\$631,113.87
200 <u>Personnel Services – Employee Benefits</u>				
210 Group Insurance – Contracted Provider	50,010.03	47,154.88		97,164.91
220 Social Security Contributions	19,616.65	27,481.88		47,098.53
230 PSERS Retirement Contributions	84,914.98	115,574.72		200,489.70
260 Workers' Compensation	1,761.60	2,470.52		4,232.12
299 All Other Employee Benefits	4,122.00	9,754.22		13,876.22
Total Personnel Services – Employee Benefits	\$160,425.26	\$202,436.22		\$362,861.48
300 <u>Purchased Professional and Technical Services</u>				
330 Other Professional Services	4,566.50	3,850.00		8,416.50
Total Purchased Professional and Technical Services	\$4,566.50	\$3,850.00		\$8,416.50
500 <u>Other Purchased Services</u>				
580 Travel	1,186.08	467.62	3,473.36	5,127.06
Total Other Purchased Services	\$1,186.08	\$467.62	\$3,473.36	\$5,127.06
600 <u>Supplies</u>				
610 General Supplies	2,411.00	2,409.13	779.00	5,599.13
Total Supplies	\$2,411.00	\$2,409.13	\$779.00	\$5,599.13
700 <u>Property</u>				
752 Capital Equipment – Original and Additional		1,851.20		1,851.20
Total Property		\$1,851.20		\$1,851.20
Total 2100 Support Services – Students	\$433,812.83	\$576,904.05	\$4,252.36	\$1,014,969.24

LEA : 114064003 Kutztown Area SD

Printed 11/2/2018 1:00:23 PM

General Fund (10)				
2120 Guidance Services	<u>Elementary</u>	<u>Secondary</u>	<u>Federal</u>	<u>Total</u>
100 <u>Personnel Services – Salaries</u>				
100 Personnel Services – Salaries	218,553.19	233,772.03		452,325.22
Total Personnel Services – Salaries	\$218,553.19	\$233,772.03		\$452,325.22
200 <u>Personnel Services – Employee Benefits</u>				
210 Group Insurance – Contracted Provider	49,863.92	47,049.33		96,913.25
220 Social Security Contributions	16,046.11	17,573.84		33,619.95
230 PSERS Retirement Contributions	71,182.90	76,139.65		147,322.55
260 Workers' Compensation	1,451.66	1,580.91		3,032.57
299 All Other Employee Benefits		5,632.22		5,632.22
Total Personnel Services – Employee Benefits	\$138,544.59	\$147,975.95		\$286,520.54
500 <u>Other Purchased Services</u>				
580 Travel	1,073.86	355.41		1,429.27
Total Other Purchased Services	\$1,073.86	\$355.41		\$1,429.27
600 <u>Supplies</u>				
610 General Supplies	1,423.39	1,421.52		2,844.91
Total Supplies	\$1,423.39	\$1,421.52		\$2,844.91
700 <u>Property</u>				
752 Capital Equipment – Original and Additional		1,851.20		1,851.20
Total Property		\$1,851.20		\$1,851.20
Total 2120 Guidance Services	\$359,595.03	\$385,376.11		\$744,971.14

LEA : 114064003 Kutztown Area SD

Printed 11/2/2018 1:00:23 PM

General Fund (10)				
2140 Psychological Services				
	<u>Elementary</u>	<u>Secondary</u>	<u>Federal</u>	<u>Total</u>
100 <u>Personnel Services – Salaries</u>				
100 Personnel Services – Salaries	46,670.80	36,392.32		83,063.12
Total Personnel Services – Salaries	\$46,670.80	\$36,392.32		\$83,063.12
200 <u>Personnel Services – Employee Benefits</u>				
210 Group Insurance – Contracted Provider	146.11	105.55		251.66
220 Social Security Contributions	3,570.54	2,783.88		6,354.42
230 PSERS Retirement Contributions	13,732.08	10,789.47		24,521.55
260 Workers' Compensation	309.94	241.41		551.35
299 All Other Employee Benefits	4,122.00	4,122.00		8,244.00
Total Personnel Services – Employee Benefits	\$21,880.67	\$18,042.31		\$39,922.98
300 <u>Purchased Professional and Technical Services</u>				
330 Other Professional Services	4,566.50	3,850.00		8,416.50
Total Purchased Professional and Technical Services	\$4,566.50	\$3,850.00		\$8,416.50
500 <u>Other Purchased Services</u>				
580 Travel	112.22	112.21		224.43
Total Other Purchased Services	\$112.22	\$112.21		\$224.43
600 <u>Supplies</u>				
610 General Supplies	987.61	987.61		1,975.22
Total Supplies	\$987.61	\$987.61		\$1,975.22
Total 2140 Psychological Services	\$74,217.80	\$59,384.45		\$133,602.25

LEA : 114064003 Kutztown Area SD

Printed 11/2/2018 1:00:23 PM

General Fund (10)				
2190 Other Student Services	<u>Elementary</u>	<u>Secondary</u>	<u>Federal</u>	<u>Total</u>
100 <u>Personnel Services – Salaries</u>				
100 Personnel Services – Salaries		95,725.53		95,725.53
Total Personnel Services – Salaries		\$95,725.53		\$95,725.53
200 <u>Personnel Services – Employee Benefits</u>				
220 Social Security Contributions		7,124.16		7,124.16
230 PSERS Retirement Contributions		28,645.60		28,645.60
260 Workers’ Compensation		648.20		648.20
Total Personnel Services – Employee Benefits		\$36,417.96		\$36,417.96
500 <u>Other Purchased Services</u>				
580 Travel			3,473.36	3,473.36
Total Other Purchased Services			\$3,473.36	\$3,473.36
600 <u>Supplies</u>				
610 General Supplies			779.00	779.00
Total Supplies			\$779.00	\$779.00
Total 2190 Other Student Services		\$132,143.49	\$4,252.36	\$136,395.85

LEA : 114064003 Kutztown Area SD

Printed 11/2/2018 1:00:23 PM

General Fund (10)

2200 Support Services – Instructional Staff	Elementary	Secondary	Federal	Total
100 Personnel Services – Salaries				
100 Personnel Services – Salaries	345,393.91	443,708.30		789,102.21
Total Personnel Services – Salaries	\$345,393.91	\$443,708.30		\$789,102.21
200 Personnel Services – Employee Benefits				
210 Group Insurance – Contracted Provider	85,109.61	62,622.56		147,732.17
220 Social Security Contributions	25,752.86	33,062.87		58,815.73
230 PSERS Retirement Contributions	112,494.85	141,323.02		253,817.87
250 Unemployment Compensation	7,506.00	7,506.00		15,012.00
260 Workers' Compensation	3,081.94	2,612.45		5,694.39
299 All Other Employee Benefits	4,189.61	4,189.62		8,379.23
Total Personnel Services – Employee Benefits	\$238,134.87	\$251,316.52		\$489,451.39
300 Purchased Professional and Technical Services				
323 Professional Educational Services – Other Educational Agencies	17,863.60	17,368.84		35,232.44
324 Professional Educational Services – Employee Training and Development Services			30,636.48	30,636.48
329 Professional Educational Services – Other	7,452.70	7,452.70		14,905.40
340 Technical Services	11,125.50	39,960.00		51,085.50
390 Other Purchased Professional and Technical Services	47,945.33	47,945.32		95,890.65
Total Purchased Professional and Technical Services	\$84,387.13	\$112,726.86	\$30,636.48	\$227,750.47
400 Purchased Property Services				
430 Repairs and Maintenance Services	954.00	954.00		1,908.00
Total Purchased Property Services	\$954.00	\$954.00		\$1,908.00
500 Other Purchased Services				
530 Communications	4,336.48	4,336.47		8,672.95
580 Travel	8,932.08	8,932.04		17,864.12
Total Other Purchased Services	\$13,268.56	\$13,268.51		\$26,537.07
600 Supplies				
610 General Supplies	87,269.57	95,296.93		182,566.50
630 Food	318.34	318.33		636.67
640 Books and Periodicals	23,870.62	42,723.24		66,593.86
Total Supplies	\$111,458.53	\$138,338.50		\$249,797.03
700 Property				
752 Capital Equipment – Original and Additional	1,395.84	7,170.32		8,566.16
758 Capitalized Technology Software - Original	17,825.73	17,825.72		35,651.45
Total Property	\$19,221.57	\$24,996.04		\$44,217.61
800 Other Objects				
810 Dues and Fees	379.50	379.50		759.00
Total Other Objects	\$379.50	\$379.50		\$759.00
Total 2200 Support Services – Instructional Staff	\$813,198.07	\$985,688.23	\$30,636.48	\$1,829,522.78

LEA : 114064003 Kutztown Area SD

Printed 11/2/2018 1:00:23 PM

General Fund (10)

2240 Computer-Assisted Instruction Support Services	Elementary	Secondary	Federal	Total
100 <u>Personnel Services – Salaries</u>				
100 Personnel Services – Salaries	51,750.00	220,232.19		271,982.19
Total Personnel Services – Salaries	\$51,750.00	\$220,232.19		\$271,982.19
200 <u>Personnel Services – Employee Benefits</u>				
210 Group Insurance – Contracted Provider	19,883.55	19,883.55		39,767.10
220 Social Security Contributions	3,920.12	16,226.13		20,146.25
230 PSERS Retirement Contributions	16,855.02	68,536.84		85,391.86
250 Unemployment Compensation	7,506.00	7,506.00		15,012.00
260 Workers' Compensation	1,027.71	1,027.70		2,055.41
299 All Other Employee Benefits	3,639.61	3,639.62		7,279.23
Total Personnel Services – Employee Benefits	\$52,832.01	\$116,819.84		\$169,651.85
300 <u>Purchased Professional and Technical Services</u>				
329 Professional Educational Services – Other	7,452.70	7,452.70		14,905.40
340 Technical Services		39,960.00		39,960.00
Total Purchased Professional and Technical Services	\$7,452.70	\$47,412.70		\$54,865.40
400 <u>Purchased Property Services</u>				
430 Repairs and Maintenance Services	954.00	954.00		1,908.00
Total Purchased Property Services	\$954.00	\$954.00		\$1,908.00
500 <u>Other Purchased Services</u>				
530 Communications	4,336.48	4,336.47		8,672.95
580 Travel	1,616.51	1,616.50		3,233.01
Total Other Purchased Services	\$5,952.99	\$5,952.97		\$11,905.96
600 <u>Supplies</u>				
610 General Supplies	53,374.04	53,374.03		106,748.07
630 Food	28.05	28.05		56.10
Total Supplies	\$53,402.09	\$53,402.08		\$106,804.17
700 <u>Property</u>				
758 Capitalized Technology Software - Original	17,825.73	17,825.72		35,651.45
Total Property	\$17,825.73	\$17,825.72		\$35,651.45
800 <u>Other Objects</u>				
810 Dues and Fees	147.50	147.50		295.00
Total Other Objects	\$147.50	\$147.50		\$295.00
Total 2240 Computer-Assisted Instruction Support Services	\$190,317.02	\$462,747.00		\$653,064.02

LEA : 114064003 Kutztown Area SD

Printed 11/2/2018 1:00:23 PM

General Fund (10)					
2250 School Library Services		Elementary	Secondary	Federal	Total
100 Personnel Services – Salaries					
100 Personnel Services – Salaries		208,564.48	138,633.70		347,198.18
Total Personnel Services – Salaries		\$208,564.48	\$138,633.70		\$347,198.18
200 Personnel Services – Employee Benefits					
210 Group Insurance – Contracted Provider		33,428.44	10,941.41		44,369.85
220 Social Security Contributions		15,471.38	10,493.53		25,964.91
230 PSERS Retirement Contributions		67,929.47	45,153.03		113,082.50
260 Workers' Compensation		1,408.81	939.34		2,348.15
Total Personnel Services – Employee Benefits		\$118,238.10	\$67,527.31		\$185,765.41
600 Supplies					
610 General Supplies		2,412.52	2,305.88		4,718.40
640 Books and Periodicals		13,879.94	32,779.64		46,659.58
Total Supplies		\$16,292.46	\$35,085.52		\$51,377.98
Total 2250 School Library Services		\$343,095.04	\$241,246.53		\$584,341.57

LEA : 114064003 Kutztown Area SD

Printed 11/2/2018 1:00:23 PM

General Fund (10)

2260 Instruction and Curriculum Development Services	Elementary	Secondary	Federal	Total
100 Personnel Services – Salaries				
100 Personnel Services – Salaries	85,079.43	84,842.41		169,921.84
Total Personnel Services – Salaries	\$85,079.43	\$84,842.41		\$169,921.84
200 Personnel Services – Employee Benefits				
210 Group Insurance – Contracted Provider	31,797.62	31,797.60		63,595.22
220 Social Security Contributions	6,361.36	6,343.21		12,704.57
230 PSERS Retirement Contributions	27,710.36	27,633.15		55,343.51
260 Workers' Compensation	645.42	645.41		1,290.83
299 All Other Employee Benefits	550.00	550.00		1,100.00
Total Personnel Services – Employee Benefits	\$67,064.76	\$66,969.37		\$134,034.13
300 Purchased Professional and Technical Services				
323 Professional Educational Services – Other Educational Agencies	17,863.60	17,368.84		35,232.44
324 Professional Educational Services – Employee Training and Development Services			100.00	100.00
340 Technical Services	11,125.50			11,125.50
390 Other Purchased Professional and Technical Services	47,945.33	47,945.32		95,890.65
Total Purchased Professional and Technical Services	\$76,934.43	\$65,314.16	\$100.00	\$142,348.59
500 Other Purchased Services				
580 Travel	4,140.02	4,139.99		8,280.01
Total Other Purchased Services	\$4,140.02	\$4,139.99		\$8,280.01
600 Supplies				
610 General Supplies	31,070.07	39,204.08		70,274.15
630 Food	190.71	190.70		381.41
640 Books and Periodicals	9,036.64	8,989.56		18,026.20
Total Supplies	\$40,297.42	\$48,384.34		\$88,681.76
700 Property				
752 Capital Equipment – Original and Additional	1,395.84	7,170.32		8,566.16
Total Property	\$1,395.84	\$7,170.32		\$8,566.16
800 Other Objects				
810 Dues and Fees	232.00	232.00		464.00
Total Other Objects	\$232.00	\$232.00		\$464.00
Total 2260 Instruction and Curriculum Development Services	\$275,143.90	\$277,052.59	\$100.00	\$552,296.49

LEA : 114064003 Kutztown Area SD

Printed 11/2/2018 1:00:23 PM

General Fund (10)				
2270 Instructional Staff Professional Development Services	<u>Elementary</u>	<u>Secondary</u>	<u>Federal</u>	<u>Total</u>
300 <u>Purchased Professional and Technical Services</u>				
324 Professional Educational Services – Employee Training and Development Services			30,536.48	30,536.48
Total Purchased Professional and Technical Services			\$30,536.48	\$30,536.48
500 <u>Other Purchased Services</u>				
580 Travel	3,175.55	3,175.55		6,351.10
Total Other Purchased Services	\$3,175.55	\$3,175.55		\$6,351.10
600 <u>Supplies</u>				
610 General Supplies	412.94	412.94		825.88
630 Food	99.58	99.58		199.16
640 Books and Periodicals	954.04	954.04		1,908.08
Total Supplies	\$1,466.56	\$1,466.56		\$2,933.12
Total 2270 Instructional Staff Professional Development Services	\$4,642.11	\$4,642.11	\$30,536.48	\$39,820.70

LEA : 114064003 Kutztown Area SD

Printed 11/2/2018 1:00:23 PM

General Fund (10)

2300 Support Services – Administration	Elementary	Secondary	Federal	Total
100 <u>Personnel Services – Salaries</u>				
100 Personnel Services – Salaries	339,597.46	371,167.60		1,110,771.15
Total Personnel Services – Salaries	\$339,597.46	\$371,167.60		\$1,110,771.15
200 <u>Personnel Services – Employee Benefits</u>				
210 Group Insurance – Contracted Provider	103,951.24	75,333.64		247,736.96
220 Social Security Contributions	24,787.25	27,498.43		79,742.09
230 PSERS Retirement Contributions	108,293.35	117,086.18		342,647.07
260 Workers' Compensation	2,574.70	2,818.13		8,420.20
299 All Other Employee Benefits	8,228.00	11,606.68		20,590.93
Total Personnel Services – Employee Benefits	\$247,834.54	\$234,343.06		\$699,137.25
300 <u>Purchased Professional and Technical Services</u>				
310 Official / Administrative Services				33,598.68
330 Other Professional Services				42,370.00
340 Technical Services				2,120.01
390 Other Purchased Professional and Technical Services				5,886.65
Total Purchased Professional and Technical Services				\$83,975.34
400 <u>Purchased Property Services</u>				
430 Repairs and Maintenance Services				925.20
440 Rentals				875.70
Total Purchased Property Services				\$1,800.90
500 <u>Other Purchased Services</u>				
520 Insurance – General				3,243.25
530 Communications	20,378.94			20,378.94
549 Other Advertising/Public Relations				6,422.21
580 Travel	1,018.79	470.12		7,096.59
599 Other Miscellaneous Purchased Services	3,978.55	1,948.35		5,926.90
Total Other Purchased Services	\$25,376.28	\$2,418.47		\$43,067.89
600 <u>Supplies</u>				
610 General Supplies	3,477.30	12,013.68		36,436.47
630 Food	1,330.69	4,039.96		7,334.36
640 Books and Periodicals				53.39
Total Supplies	\$4,807.99	\$16,053.64		\$43,824.22
700 <u>Property</u>				
752 Capital Equipment – Original and Additional		39.99		600.74
Total Property		\$39.99		\$600.74
800 <u>Other Objects</u>				
810 Dues and Fees	2,071.40	1,844.15		26,316.30
Total Other Objects	\$2,071.40	\$1,844.15		\$26,316.30
Total 2300 Support Services – Administration	\$619,687.67	\$625,866.91		\$2,009,493.79

LEA : 114064003 Kutztown Area SD

Printed 11/2/2018 1:00:23 PM

General Fund (10)				
2310 Board Services				
	<u>Elementary</u>	<u>Secondary</u>	<u>Federal</u>	<u>Total</u>
100 <u>Personnel Services – Salaries</u>				
100 Personnel Services – Salaries				2,500.00
Total Personnel Services – Salaries				\$2,500.00
200 <u>Personnel Services – Employee Benefits</u>				
220 Social Security Contributions				191.25
230 PSERS Retirement Contributions				814.26
260 Workers’ Compensation				18.99
Total Personnel Services – Employee Benefits				\$1,024.50
300 <u>Purchased Professional and Technical Services</u>				
330 Other Professional Services				25,775.00
390 Other Purchased Professional and Technical Services				5,886.65
Total Purchased Professional and Technical Services				\$31,661.65
500 <u>Other Purchased Services</u>				
520 Insurance – General				250.00
549 Other Advertising/Public Relations				6,422.21
580 Travel				1,660.24
Total Other Purchased Services				\$8,332.45
600 <u>Supplies</u>				
610 General Supplies				2,827.33
630 Food				128.26
Total Supplies				\$2,955.59
800 <u>Other Objects</u>				
810 Dues and Fees				12,771.81
Total Other Objects				\$12,771.81
Total 2310 Board Services				\$59,246.00

LEA : 114064003 Kutztown Area SD

Printed 11/2/2018 1:00:23 PM

General Fund (10)

2320 Board Treasurer Services	<u>Elementary</u>	<u>Secondary</u>	<u>Federal</u>	<u>Total</u>
100 <u>Personnel Services – Salaries</u>				
100 Personnel Services – Salaries				1,050.00
Total Personnel Services – Salaries				\$1,050.00
200 <u>Personnel Services – Employee Benefits</u>				
220 Social Security Contributions				80.33
230 PSERS Retirement Contributions				341.99
260 Workers’ Compensation				7.98
Total Personnel Services – Employee Benefits				\$430.30
500 <u>Other Purchased Services</u>				
520 Insurance – General				250.00
Total Other Purchased Services				\$250.00
Total 2320 Board Treasurer Services				\$1,730.30

LEA : 114064003 Kutztown Area SD

Printed 11/2/2018 1:00:23 PM

General Fund (10)				
2330 Tax Assessment and Collection Services	<u>Elementary</u>	<u>Secondary</u>	<u>Federal</u>	<u>Total</u>
100 <u>Personnel Services – Salaries</u>				
100 Personnel Services – Salaries				22,986.25
Total Personnel Services – Salaries				\$22,986.25
200 <u>Personnel Services – Employee Benefits</u>				
220 Social Security Contributions				1,758.52
260 Workers’ Compensation				174.47
Total Personnel Services – Employee Benefits				\$1,932.99
300 <u>Purchased Professional and Technical Services</u>				
310 Official / Administrative Services				33,598.68
Total Purchased Professional and Technical Services				\$33,598.68
500 <u>Other Purchased Services</u>				
520 Insurance – General				2,743.25
Total Other Purchased Services				\$2,743.25
600 <u>Supplies</u>				
610 General Supplies				12,741.00
Total Supplies				\$12,741.00
Total 2330 Tax Assessment and Collection Services				\$74,002.17

LEA : 114064003 Kutztown Area SD

Printed 11/2/2018 1:00:23 PM

General Fund (10)

2350 Legal and Accounting Services	<u>Elementary</u>	<u>Secondary</u>	<u>Federal</u>	<u>Total</u>
300 <u>Purchased Professional and Technical Services</u>				
330 Other Professional Services				16,595.00
Total Purchased Professional and Technical Services				\$16,595.00
Total 2350 Legal and Accounting Services				\$16,595.00

LEA : 114064003 Kutztown Area SD

Printed 11/2/2018 1:00:23 PM

General Fund (10)				
2360 Office of the Superintendent / Executive Director Services	<u>Elementary</u>	<u>Secondary</u>	<u>Federal</u>	<u>Total</u>
100 <u>Personnel Services – Salaries</u>				
100 Personnel Services – Salaries				373,469.84
Total Personnel Services – Salaries				\$373,469.84
200 <u>Personnel Services – Employee Benefits</u>				
210 Group Insurance – Contracted Provider				68,452.08
220 Social Security Contributions				25,426.31
230 PSERS Retirement Contributions				116,111.29
260 Workers' Compensation				2,825.93
299 All Other Employee Benefits				756.25
Total Personnel Services – Employee Benefits				\$213,571.86
300 <u>Purchased Professional and Technical Services</u>				
340 Technical Services				2,120.01
Total Purchased Professional and Technical Services				\$2,120.01
400 <u>Purchased Property Services</u>				
430 Repairs and Maintenance Services				925.20
440 Rentals				875.70
Total Purchased Property Services				\$1,800.90
500 <u>Other Purchased Services</u>				
530 Communications	20,378.94			20,378.94
580 Travel				3,947.44
Total Other Purchased Services	\$20,378.94			\$24,326.38
600 <u>Supplies</u>				
610 General Supplies				5,377.16
630 Food				1,835.45
640 Books and Periodicals				53.39
Total Supplies				\$7,266.00
700 <u>Property</u>				
752 Capital Equipment – Original and Additional				560.75
Total Property				\$560.75
800 <u>Other Objects</u>				
810 Dues and Fees				9,628.94
Total Other Objects				\$9,628.94
Total 2360 Office of the Superintendent / Executive Director Services	\$20,378.94			\$632,744.68

LEA : 114064003 Kutztown Area SD

Printed 11/2/2018 1:00:23 PM

General Fund (10)				
2380 Office of the Principal Services	<u>Elementary</u>	<u>Secondary</u>	<u>Federal</u>	<u>Total</u>
100 <u>Personnel Services – Salaries</u>				
100 Personnel Services – Salaries	339,597.46	371,167.60		710,765.06
Total Personnel Services – Salaries	\$339,597.46	\$371,167.60		\$710,765.06
200 <u>Personnel Services – Employee Benefits</u>				
210 Group Insurance – Contracted Provider	103,951.24	75,333.64		179,284.88
220 Social Security Contributions	24,787.25	27,498.43		52,285.68
230 PSERS Retirement Contributions	108,293.35	117,086.18		225,379.53
260 Workers' Compensation	2,574.70	2,818.13		5,392.83
299 All Other Employee Benefits	8,228.00	11,606.68		19,834.68
Total Personnel Services – Employee Benefits	\$247,834.54	\$234,343.06		\$482,177.60
500 <u>Other Purchased Services</u>				
580 Travel	1,018.79	470.12		1,488.91
599 Other Miscellaneous Purchased Services	3,978.55	1,948.35		5,926.90
Total Other Purchased Services	\$4,997.34	\$2,418.47		\$7,415.81
600 <u>Supplies</u>				
610 General Supplies	3,477.30	12,013.68		15,490.98
630 Food	1,330.69	4,039.96		5,370.65
Total Supplies	\$4,807.99	\$16,053.64		\$20,861.63
700 <u>Property</u>				
752 Capital Equipment – Original and Additional		39.99		39.99
Total Property		\$39.99		\$39.99
800 <u>Other Objects</u>				
810 Dues and Fees	2,071.40	1,844.15		3,915.55
Total Other Objects	\$2,071.40	\$1,844.15		\$3,915.55
Total 2380 Office of the Principal Services	\$599,308.73	\$625,866.91		\$1,225,175.64

LEA : 114064003 Kutztown Area SD

Printed 11/2/2018 1:00:23 PM

General Fund (10)				
2400 Support Services – Pupil Health	<u>Elementary</u>	<u>Secondary</u>	<u>Federal</u>	<u>Total</u>
100 <u>Personnel Services – Salaries</u>				
100 Personnel Services – Salaries				217,966.50
Total Personnel Services – Salaries				\$217,966.50
200 <u>Personnel Services – Employee Benefits</u>				
210 Group Insurance – Contracted Provider				53,708.04
220 Social Security Contributions				15,508.47
230 PSERS Retirement Contributions				70,991.57
260 Workers' Compensation				1,570.48
299 All Other Employee Benefits				600.00
Total Personnel Services – Employee Benefits				\$142,378.56
300 <u>Purchased Professional and Technical Services</u>				
330 Other Professional Services				138,045.72
Total Purchased Professional and Technical Services				\$138,045.72
500 <u>Other Purchased Services</u>				
580 Travel				96.20
Total Other Purchased Services				\$96.20
600 <u>Supplies</u>				
610 General Supplies				8,966.85
Total Supplies				\$8,966.85
Total 2400 Support Services – Pupil Health				\$507,453.83

Page 66

LEA : 114064003 Kutztown Area SD

Printed 11/2/2018 1:00:23 PM

General Fund (10)

2430 Dental Services

	<u>Elementary</u>	<u>Secondary</u>	<u>Federal</u>	<u>Total</u>
300 <u>Purchased Professional and Technical Services</u>				
330 Other Professional Services				85.00
Total Purchased Professional and Technical Services				\$85.00
Total 2430 Dental Services				\$85.00

LEA : 114064003 Kutztown Area SD

Printed 11/2/2018 1:00:23 PM

General Fund (10)				
2440 Nursing Services	<u>Elementary</u>	<u>Secondary</u>	<u>Federal</u>	<u>Total</u>
100 <u>Personnel Services – Salaries</u>				
100 Personnel Services – Salaries				217,966.50
Total Personnel Services – Salaries				\$217,966.50
200 <u>Personnel Services – Employee Benefits</u>				
210 Group Insurance – Contracted Provider				53,708.04
220 Social Security Contributions				15,508.47
230 PSERS Retirement Contributions				70,991.57
260 Workers' Compensation				1,570.48
299 All Other Employee Benefits				600.00
Total Personnel Services – Employee Benefits				\$142,378.56
300 <u>Purchased Professional and Technical Services</u>				
330 Other Professional Services				8,082.34
Total Purchased Professional and Technical Services				\$8,082.34
500 <u>Other Purchased Services</u>				
580 Travel				96.20
Total Other Purchased Services				\$96.20
600 <u>Supplies</u>				
610 General Supplies				8,966.85
Total Supplies				\$8,966.85
Total 2440 Nursing Services				\$377,490.45

LEA : 114064003 Kutztown Area SD

Printed 11/2/2018 1:00:23 PM

General Fund (10)				
2500 Support Services – Business	Elementary	Secondary	Federal	Total
100 <u>Personnel Services – Salaries</u>				
100 Personnel Services – Salaries				227,594.94
Total Personnel Services – Salaries				\$227,594.94
200 <u>Personnel Services – Employee Benefits</u>				
210 Group Insurance – Contracted Provider				73,832.31
220 Social Security Contributions				16,892.09
230 PSERS Retirement Contributions				72,408.64
260 Workers' Compensation				1,728.29
299 All Other Employee Benefits				1,906.25
Total Personnel Services – Employee Benefits				\$166,767.58
300 <u>Purchased Professional and Technical Services</u>				
330 Other Professional Services				13,547.33
340 Technical Services				24,176.77
Total Purchased Professional and Technical Services				\$37,724.10
400 <u>Purchased Property Services</u>				
430 Repairs and Maintenance Services				1,813.32
440 Rentals				5,352.24
Total Purchased Property Services				\$7,165.56
500 <u>Other Purchased Services</u>				
580 Travel				2,296.93
Total Other Purchased Services				\$2,296.93
600 <u>Supplies</u>				
610 General Supplies				8,595.26
Total Supplies				\$8,595.26
800 <u>Other Objects</u>				
810 Dues and Fees				383.00
Total Other Objects				\$383.00
Total 2500 Support Services – Business				\$450,527.37

LEA : 114064003 Kutztown Area SD

Printed 11/2/2018 1:00:23 PM

General Fund (10)				
2510 Fiscal Services				
	<u>Elementary</u>	<u>Secondary</u>	<u>Federal</u>	<u>Total</u>
100 <u>Personnel Services – Salaries</u>				
100 Personnel Services – Salaries				227,594.94
Total Personnel Services – Salaries				\$227,594.94
200 <u>Personnel Services – Employee Benefits</u>				
210 Group Insurance – Contracted Provider				73,832.31
220 Social Security Contributions				16,892.09
230 PSERS Retirement Contributions				72,408.64
260 Workers' Compensation				1,728.29
299 All Other Employee Benefits				1,906.25
Total Personnel Services – Employee Benefits				\$166,767.58
300 <u>Purchased Professional and Technical Services</u>				
330 Other Professional Services				13,547.33
340 Technical Services				24,176.77
Total Purchased Professional and Technical Services				\$37,724.10
400 <u>Purchased Property Services</u>				
430 Repairs and Maintenance Services				1,813.32
440 Rentals				5,352.24
Total Purchased Property Services				\$7,165.56
500 <u>Other Purchased Services</u>				
580 Travel				2,296.93
Total Other Purchased Services				\$2,296.93
600 <u>Supplies</u>				
610 General Supplies				8,595.26
Total Supplies				\$8,595.26
800 <u>Other Objects</u>				
810 Dues and Fees				383.00
Total Other Objects				\$383.00
Total 2510 Fiscal Services				\$450,527.37

LEA : 114064003 Kutztown Area SD

Printed 11/2/2018 1:00:23 PM

General Fund (10)

2511 Supervision of Fiscal Services - Head of Component	<u>Elementary</u>	<u>Secondary</u>	<u>Federal</u>	<u>Total</u>
100 <u>Personnel Services – Salaries</u>				
100 Personnel Services – Salaries				117,346.20
Total Personnel Services – Salaries				\$117,346.20
200 <u>Personnel Services – Employee Benefits</u>				
210 Group Insurance – Contracted Provider				20,167.57
220 Social Security Contributions				8,540.72
230 PSERS Retirement Contributions				36,803.99
Total Personnel Services – Employee Benefits				\$65,512.28
500 <u>Other Purchased Services</u>				
580 Travel				1,901.56
Total Other Purchased Services				\$1,901.56
Total 2511 Supervision of Fiscal Services - Head of Component				\$184,760.04

LEA : 114064003 Kutztown Area SD

Printed 11/2/2018 1:00:23 PM

General Fund (10)				
2515 Financial Accounting Services	<u>Elementary</u>	<u>Secondary</u>	<u>Federal</u>	<u>Total</u>
100 <u>Personnel Services – Salaries</u>				
100 Personnel Services – Salaries				110,248.74
Total Personnel Services – Salaries				\$110,248.74
200 <u>Personnel Services – Employee Benefits</u>				
210 Group Insurance – Contracted Provider				53,664.74
220 Social Security Contributions				8,351.37
230 PSERS Retirement Contributions				35,604.65
260 Workers' Compensation				1,728.29
299 All Other Employee Benefits				1,906.25
Total Personnel Services – Employee Benefits				\$101,255.30
300 <u>Purchased Professional and Technical Services</u>				
330 Other Professional Services				13,547.33
340 Technical Services				24,176.77
Total Purchased Professional and Technical Services				\$37,724.10
400 <u>Purchased Property Services</u>				
430 Repairs and Maintenance Services				1,813.32
440 Rentals				5,352.24
Total Purchased Property Services				\$7,165.56
500 <u>Other Purchased Services</u>				
580 Travel				395.37
Total Other Purchased Services				\$395.37
600 <u>Supplies</u>				
610 General Supplies				8,595.26
Total Supplies				\$8,595.26
800 <u>Other Objects</u>				
810 Dues and Fees				383.00
Total Other Objects				\$383.00
Total 2515 Financial Accounting Services				\$265,767.33

LEA : 114064003 Kutztown Area SD

Printed 11/2/2018 1:00:23 PM

General Fund (10)				
2600 Operation and Maintenance of Plant Services	<u>Elementary</u>	<u>Secondary</u>	<u>Federal</u>	<u>Total</u>
100 <u>Personnel Services – Salaries</u>				
100 Personnel Services – Salaries				722,594.75
Total Personnel Services – Salaries				\$722,594.75
200 <u>Personnel Services – Employee Benefits</u>				
210 Group Insurance – Contracted Provider				343,991.95
220 Social Security Contributions				54,491.05
230 PSERS Retirement Contributions				228,597.84
260 Workers' Compensation				5,434.87
299 All Other Employee Benefits				11,737.01
Total Personnel Services – Employee Benefits				\$644,252.72
300 <u>Purchased Professional and Technical Services</u>				
340 Technical Services				4,063.51
350 Security / Safety Services				10,027.66
Total Purchased Professional and Technical Services				\$14,091.17
400 <u>Purchased Property Services</u>				
410 Cleaning Services				128,987.10
420 Utility Services				555,488.49
430 Repairs and Maintenance Services				229,377.56
440 Rentals				371.80
Total Purchased Property Services				\$914,224.95
500 <u>Other Purchased Services</u>				
521 Fire Insurance				69,214.00
522 Automotive Liability Insurance				12,540.00
523 General Property and Liability Insurance				17,914.00
530 Communications				32,259.92
580 Travel				118.75
Total Other Purchased Services				\$132,046.67
600 <u>Supplies</u>				
610 General Supplies	31,519.04	45,896.89		77,415.93
620 Energy				143,479.56
Total Supplies	\$31,519.04	\$45,896.89		\$220,895.49
700 <u>Property</u>				
752 Capital Equipment – Original and Additional				8,489.73
762 Capitalized Equipment - Replacement				4,000.00
Total Property				\$12,489.73
800 <u>Other Objects</u>				
810 Dues and Fees				2,324.86
Total Other Objects				\$2,324.86
Total 2600 Operation and Maintenance of Plant Services	\$31,519.04	\$45,896.89		\$2,662,920.34

LEA : 114064003 Kutztown Area SD

Printed 11/2/2018 1:00:23 PM

General Fund (10)				
2620 Operation of Buildings Services	<u>Elementary</u>	<u>Secondary</u>	<u>Federal</u>	<u>Total</u>
100 <u>Personnel Services – Salaries</u>				
100 Personnel Services – Salaries				722,594.75
Total Personnel Services – Salaries				\$722,594.75
200 <u>Personnel Services – Employee Benefits</u>				
210 Group Insurance – Contracted Provider				343,991.95
220 Social Security Contributions				54,491.05
230 PSERS Retirement Contributions				228,597.84
260 Workers' Compensation				5,434.87
299 All Other Employee Benefits				11,737.01
Total Personnel Services – Employee Benefits				\$644,252.72
300 <u>Purchased Professional and Technical Services</u>				
340 Technical Services				4,063.51
350 Security / Safety Services				10,027.66
Total Purchased Professional and Technical Services				\$14,091.17
400 <u>Purchased Property Services</u>				
410 Cleaning Services				128,987.10
420 Utility Services				555,488.49
430 Repairs and Maintenance Services				229,377.56
440 Rentals				371.80
Total Purchased Property Services				\$914,224.95
500 <u>Other Purchased Services</u>				
521 Fire Insurance				69,214.00
522 Automotive Liability Insurance				12,540.00
523 General Property and Liability Insurance				17,914.00
530 Communications				32,259.92
580 Travel				118.75
Total Other Purchased Services				\$132,046.67
600 <u>Supplies</u>				
610 General Supplies	31,519.04	45,896.89		77,415.93
620 Energy				143,479.56
Total Supplies	\$31,519.04	\$45,896.89		\$220,895.49
700 <u>Property</u>				
752 Capital Equipment – Original and Additional				8,489.73
762 Capitalized Equipment - Replacement				4,000.00
Total Property				\$12,489.73
800 <u>Other Objects</u>				
810 Dues and Fees				2,324.86
Total Other Objects				\$2,324.86
Total 2620 Operation of Buildings Services	\$31,519.04	\$45,896.89		\$2,662,920.34

LEA : 114064003 Kutztown Area SD

Printed 11/2/2018 1:00:23 PM

General Fund (10)				
2700 Student Transportation Services	<u>Elementary</u>	<u>Secondary</u>	<u>Federal</u>	<u>Total</u>
100 <u>Personnel Services – Salaries</u>				
100 Personnel Services – Salaries				107,798.39
Total Personnel Services – Salaries				\$107,798.39
200 <u>Personnel Services – Employee Benefits</u>				
210 Group Insurance – Contracted Provider				39,209.55
220 Social Security Contributions				8,093.86
230 PSERS Retirement Contributions				31,856.90
260 Workers' Compensation				809.93
299 All Other Employee Benefits				550.00
Total Personnel Services – Employee Benefits				\$80,520.24
300 <u>Purchased Professional and Technical Services</u>				
330 Other Professional Services				528.00
340 Technical Services				4,300.00
Total Purchased Professional and Technical Services				\$4,828.00
400 <u>Purchased Property Services</u>				
430 Repairs and Maintenance Services				12,485.39
Total Purchased Property Services				\$12,485.39
500 <u>Other Purchased Services</u>				
513 Contracted Carriers				959,610.76
516 Student Transportation Services From the IU				7,923.12
519 Student Transportation Services From Other Sources				166,660.37
580 Travel				361.98
599 Other Miscellaneous Purchased Services				8,479.51
Total Other Purchased Services				\$1,143,035.74
600 <u>Supplies</u>				
610 General Supplies				1,115.49
620 Energy				25,658.13
630 Food				19.00
Total Supplies				\$26,792.62
800 <u>Other Objects</u>				
810 Dues and Fees				20.00
Total Other Objects				\$20.00
Total 2700 Student Transportation Services				\$1,375,480.38

LEA : 114064003 Kutztown Area SD

Printed 11/2/2018 1:00:23 PM

General Fund (10)				
2720 Vehicle Operation Services				
	<u>Elementary</u>	<u>Secondary</u>	<u>Federal</u>	<u>Total</u>
100 <u>Personnel Services – Salaries</u>				
100 Personnel Services – Salaries				97,041.35
Total Personnel Services – Salaries				\$97,041.35
200 <u>Personnel Services – Employee Benefits</u>				
210 Group Insurance – Contracted Provider				39,209.55
220 Social Security Contributions				7,270.95
230 PSERS Retirement Contributions				28,353.31
260 Workers' Compensation				728.21
Total Personnel Services – Employee Benefits				\$75,562.02
300 <u>Purchased Professional and Technical Services</u>				
330 Other Professional Services				528.00
340 Technical Services				4,300.00
Total Purchased Professional and Technical Services				\$4,828.00
500 <u>Other Purchased Services</u>				
513 Contracted Carriers				737,373.03
516 Student Transportation Services From the IU				7,923.12
519 Student Transportation Services From Other Sources				166,660.37
580 Travel				361.98
599 Other Miscellaneous Purchased Services				8,479.51
Total Other Purchased Services				\$920,798.01
600 <u>Supplies</u>				
610 General Supplies				1,115.49
620 Energy				25,658.13
630 Food				19.00
Total Supplies				\$26,792.62
800 <u>Other Objects</u>				
810 Dues and Fees				20.00
Total Other Objects				\$20.00
Total 2720 Vehicle Operation Services				\$1,125,042.00

LEA : 114064003 Kutztown Area SD

Printed 11/2/2018 1:00:23 PM

General Fund (10)				
2740 Vehicle Servicing and Maintenance Services	<u>Elementary</u>	<u>Secondary</u>	<u>Federal</u>	<u>Total</u>
400 <u>Purchased Property Services</u>				
430 Repairs and Maintenance Services				12,485.39
Total Purchased Property Services				\$12,485.39
Total 2740 Vehicle Servicing and Maintenance Services				\$12,485.39

LEA : 114064003 Kutztown Area SD

Printed 11/2/2018 1:00:23 PM

General Fund (10)

2750 Nonpublic Transportation	<u>Elementary</u>	<u>Secondary</u>	<u>Federal</u>	<u>Total</u>
100 <u>Personnel Services – Salaries</u>				
100 Personnel Services – Salaries				10,757.04
Total Personnel Services – Salaries				\$10,757.04
200 <u>Personnel Services – Employee Benefits</u>				
220 Social Security Contributions				822.91
230 PSERS Retirement Contributions				3,503.59
260 Workers’ Compensation				81.72
299 All Other Employee Benefits				550.00
Total Personnel Services – Employee Benefits				\$4,958.22
500 <u>Other Purchased Services</u>				
513 Contracted Carriers				222,237.73
Total Other Purchased Services				\$222,237.73
Total 2750 Nonpublic Transportation				\$237,952.99

LEA : 114064003 Kutztown Area SD

Printed 11/2/2018 1:00:23 PM

General Fund (10)				
2800 Support Services – Central	<u>Elementary</u>	<u>Secondary</u>	<u>Federal</u>	<u>Total</u>
300 <u>Purchased Professional and Technical Services</u>				
340 Technical Services				17,057.25
390 Other Purchased Professional and Technical Services				764.20
Total Purchased Professional and Technical Services				\$17,821.45
500 <u>Other Purchased Services</u>				
580 Travel				970.40
Total Other Purchased Services				\$970.40
600 <u>Supplies</u>				
610 General Supplies				5,198.78
Total Supplies				\$5,198.78
Total 2800 Support Services – Central				\$23,990.63

LEA : 114064003 Kutztown Area SD

Printed 11/2/2018 1:00:23 PM

General Fund (10)				
2830 Staff Services	<u>Elementary</u>	<u>Secondary</u>	<u>Federal</u>	<u>Total</u>
300 <u>Purchased Professional and Technical Services</u>				
340 Technical Services				17,057.25
390 Other Purchased Professional and Technical Services				764.20
Total Purchased Professional and Technical Services				\$17,821.45
500 <u>Other Purchased Services</u>				
580 Travel				970.40
Total Other Purchased Services				\$970.40
600 <u>Supplies</u>				
610 General Supplies				5,198.78
Total Supplies				\$5,198.78
Total 2830 Staff Services				\$23,990.63

LEA : 114064003 Kutztown Area SD

Printed 11/2/2018 1:00:23 PM

General Fund (10)				
2832 Recruitment and Placement Services	<u>Elementary</u>	<u>Secondary</u>	<u>Federal</u>	<u>Total</u>
300 <u>Purchased Professional and Technical Services</u>				
340 Technical Services				17,057.25
390 Other Purchased Professional and Technical Services				764.20
Total Purchased Professional and Technical Services				\$17,821.45
500 <u>Other Purchased Services</u>				
580 Travel				970.40
Total Other Purchased Services				\$970.40
600 <u>Supplies</u>				
610 General Supplies				5,198.78
Total Supplies				\$5,198.78
Total 2832 Recruitment and Placement Services				\$23,990.63

LEA : 114064003 Kutztown Area SD

Printed 11/2/2018 1:00:23 PM

General Fund (10)				
2900 Other Support Services	<u>Elementary</u>	<u>Secondary</u>	<u>Federal</u>	<u>Total</u>
500 <u>Other Purchased Services</u>				
595 IU Payments By Withholding				27,487.85
Total Other Purchased Services				\$27,487.85
Total 2900 Other Support Services				\$27,487.85

LEA : 114064003 Kutztown Area SD

Printed 11/2/2018 1:00:23 PM

General Fund (10)

2910 Support Services Not Listed Elsewhere In the 2000 Series

Elementary Secondary Federal Total

500 <u>Other Purchased Services</u>				
595 IU Payments By Withholding				27,487.85
Total Other Purchased Services				\$27,487.85
Total 2910 Support Services Not Listed Elsewhere In the 2000 Series				\$27,487.85

LEA : 114064003 Kutztown Area SD

Printed 11/2/2018 1:00:27 PM

General Fund (10)	
3000 Operation of Non-Instructional Services	<u>Total</u>
100 <u>Personnel Services – Salaries</u>	
100 Personnel Services – Salaries	369,650.80
Total Personnel Services – Salaries	\$369,650.80
200 <u>Personnel Services – Employee Benefits</u>	
210 Group Insurance – Contracted Provider	2,137.69
220 Social Security Contributions	28,251.43
230 PSERS Retirement Contributions	104,685.92
250 Unemployment Compensation	8.40
260 Workers' Compensation	2,808.11
Total Personnel Services – Employee Benefits	\$137,891.55
300 <u>Purchased Professional and Technical Services</u>	
330 Other Professional Services	36,000.00
390 Other Purchased Professional and Technical Services	18,200.00
Total Purchased Professional and Technical Services	\$54,200.00
500 <u>Other Purchased Services</u>	
510 Student Transportation Services	40,995.38
520 Insurance – General	11,116.00
580 Travel	1,806.85
591 Services Purchased Locally	14,564.75
592 Services Purchased From Another LEA Within the State	150.00
Total Other Purchased Services	\$68,632.98
600 <u>Supplies</u>	
610 General Supplies	120,950.37
Total Supplies	\$120,950.37
800 <u>Other Objects</u>	
810 Dues and Fees	4,778.00
Total Other Objects	\$4,778.00
Total 3000 Operation of Non-Instructional Services	\$756,103.70

LEA : 114064003 Kutztown Area SD

Printed 11/2/2018 1:00:27 PM

General Fund (10)				
3200 Student Activities				
	<u>Elementary</u>	<u>Secondary</u>	<u>Federal</u>	<u>Total</u>
100 <u>Personnel Services – Salaries</u>				
100 Personnel Services – Salaries				369,650.80
Total Personnel Services – Salaries				\$369,650.80
200 <u>Personnel Services – Employee Benefits</u>				
210 Group Insurance – Contracted Provider				2,137.69
220 Social Security Contributions				28,251.43
230 PSERS Retirement Contributions				104,685.92
250 Unemployment Compensation				8.40
260 Workers' Compensation				2,808.11
Total Personnel Services – Employee Benefits				\$137,891.55
300 <u>Purchased Professional and Technical Services</u>				
330 Other Professional Services				36,000.00
390 Other Purchased Professional and Technical Services				18,200.00
Total Purchased Professional and Technical Services				\$54,200.00
500 <u>Other Purchased Services</u>				
510 Student Transportation Services				40,995.38
520 Insurance – General				11,116.00
580 Travel				1,806.85
Total Other Purchased Services				\$53,918.23
600 <u>Supplies</u>				
610 General Supplies				120,330.57
Total Supplies				\$120,330.57
800 <u>Other Objects</u>				
810 Dues and Fees				4,778.00
Total Other Objects				\$4,778.00
Total 3200 Student Activities				\$740,769.15

LEA : 114064003 Kutztown Area SD

Printed 11/2/2018 1:00:27 PM

General Fund (10)				
3300 Community Services	<u>Elementary</u>	<u>Secondary</u>	<u>Federal</u>	<u>Total</u>
500 <u>Other Purchased Services</u>				
591 Services Purchased Locally				14,564.75
592 Services Purchased From Another LEA Within the State				150.00
Total Other Purchased Services				\$14,714.75
600 <u>Supplies</u>				
610 General Supplies			619.80	619.80
Total Supplies			\$619.80	\$619.80
Total 3300 Community Services			\$619.80	\$15,334.55

LEA : 114064003 Kutztown Area SD

Printed 11/2/2018 1:00:28 PM

General Fund (10)

4000 Facilities Acquisition, Construction and Improvement Services

Total

700 Property

756 Capitalized Technology Hardware and Equipment – Original

205,875.90

Total Property	\$205,875.90
Total 4000 Facilities Acquisition, Construction and Improvement Services	\$205,875.90

LEA : 114064003 Kutztown Area SD

Printed 11/2/2018 1:00:28 PM

General Fund (10)

4600 Existing Building Improvement Services	<u>Elementary</u>	<u>Secondary</u>	<u>Federal</u>	<u>Total</u>
700 <u>Property</u>				
756 Capitalized Technology Hardware and Equipment – Original				205,875.90
Total Property				\$205,875.90
Total 4600 Existing Building Improvement Services				\$205,875.90

LEA : 114064003 Kutztown Area SD

Printed 11/2/2018 1:00:30 PM

General Fund (10)

5000 Other Expenditures and Financing Uses		<u>Total</u>
800 <u>Other Objects</u>		
830 Interest		534,543.02
880 Refunds of Prior Years' Receipts		2.00
Total Other Objects		\$534,545.02
900 <u>Other Uses of Funds</u>		
910 Redemption of Principal		2,042,241.69
930 Fund Transfers		2,172.38
939 Other Fund Transfers		450,753.00
Total Other Uses of Funds		\$2,495,167.07
Total 5000 Other Expenditures and Financing Uses		\$3,029,712.09

LEA : 114064003 Kutztown Area SD

Printed 11/2/2018 1:00:30 PM

General Fund (10)				
5100 Debt Service / Other Expenditures and Financing Uses	<u>Elementary</u>	<u>Secondary</u>	<u>Federal</u>	<u>Total</u>
800 <u>Other Objects</u>				
830 Interest				534,543.02
880 Refunds of Prior Years' Receipts				2.00
Total Other Objects				\$534,545.02
900 <u>Other Uses of Funds</u>				
910 Redemption of Principal				2,042,241.69
Total Other Uses of Funds				\$2,042,241.69
Total 5100 Debt Service / Other Expenditures and Financing Uses				\$2,576,786.71

LEA : 114064003 Kutztown Area SD

Printed 11/2/2018 1:00:30 PM

General Fund (10)				
5110 Debt Service	<u>Elementary</u>	<u>Secondary</u>	<u>Federal</u>	<u>Total</u>
800 <u>Other Objects</u>				
830 Interest				534,543.02
Total Other Objects				\$534,543.02
900 <u>Other Uses of Funds</u>				
910 Redemption of Principal				2,042,241.69
Total Other Uses of Funds				\$2,042,241.69
Total 5110 Debt Service				\$2,576,784.71

LEA : 114064003 Kutztown Area SD

Printed 11/2/2018 1:00:30 PM

General Fund (10)

5130 Refund of Prior Year Revenues / Receipts	<u>Elementary</u>	<u>Secondary</u>	<u>Federal</u>	<u>Total</u>
800 <u>Other Objects</u>				
880 Refunds of Prior Years' Receipts				2.00
Total Other Objects				\$2.00
Total 5130 Refund of Prior Year Revenues / Receipts				\$2.00

LEA : 114064003 Kutztown Area SD

Printed 11/2/2018 1:00:30 PM

General Fund (10)

5200 Interfund Transfers – Out	<u>Elementary</u>	<u>Secondary</u>	<u>Federal</u>	<u>Total</u>
900 <u>Other Uses of Funds</u>				
930 Fund Transfers				2,172.38
939 Other Fund Transfers				450,753.00
Total Other Uses of Funds				\$452,925.38
Total 5200 Interfund Transfers – Out				\$452,925.38

LEA : 114064003 Kutztown Area SD

Printed 11/2/2018 1:00:30 PM

General Fund (10)

5230 Capital Projects Fund Transfers	<u>Elementary</u>	<u>Secondary</u>	<u>Federal</u>	<u>Total</u>
900 <u>Other Uses of Funds</u>				
939 Other Fund Transfers				450,753.00
Total Other Uses of Funds				\$450,753.00
Total 5230 Capital Projects Fund Transfers				\$450,753.00

LEA : 114064003 Kutztown Area SD

Printed 11/2/2018 1:00:30 PM

General Fund (10)

5250 Enterprise Fund Transfers	<u>Elementary</u>	<u>Secondary</u>	<u>Federal</u>	<u>Total</u>
900 <u>Other Uses of Funds</u>				
930 Fund Transfers				2,172.38
Total Other Uses of Funds				\$2,172.38
Total 5250 Enterprise Fund Transfers				\$2,172.38

LEA : 114064003 Kutztown Area SD

Printed 11/2/2018 1:00:22 PM

Other Capital Projects Fund (39)

1000 Instruction		<u>Total</u>
700 <u>Property</u>		
752 Capital Equipment – Original and Additional		4,045.99
Total Property		\$4,045.99
Total 1000 Instruction		\$4,045.99

LEA : 114064003 Kutztown Area SD

Printed 11/2/2018 1:00:22 PM

Other Capital Projects Fund (39)

1100 Regular Programs – Elementary / Secondary	<u>Elementary</u>	<u>Secondary</u>	<u>Federal</u>	<u>Total</u>
700 <u>Property</u>				
752 Capital Equipment – Original and Additional	2,022.99	2,023.00		4,045.99
Total Property	\$2,022.99	\$2,023.00		\$4,045.99
Total 1100 Regular Programs – Elementary / Secondary	\$2,022.99	\$2,023.00		\$4,045.99

LEA : 114064003 Kutztown Area SD

Printed 11/2/2018 1:00:22 PM

Other Capital Projects Fund (39)

1110 Regular Programs

	<u>Elementary</u>	<u>Secondary</u>	<u>Federal</u>	<u>Total</u>
700 <u>Property</u>				
752 Capital Equipment – Original and Additional	2,022.99	2,023.00		4,045.99
Total Property	\$2,022.99	\$2,023.00		\$4,045.99
Total 1110 Regular Programs	\$2,022.99	\$2,023.00		\$4,045.99

LEA : 114064003 Kutztown Area SD

Printed 11/2/2018 1:00:26 PM

Other Capital Projects Fund (39)

2000 Support Services	Total
300 <u>Purchased Professional and Technical Services</u>	
330 Other Professional Services	61,713.00
Total Purchased Professional and Technical Services	\$61,713.00
700 <u>Property</u>	
752 Capital Equipment – Original and Additional	277,232.12
Total Property	\$277,232.12
Total 2000 Support Services	\$338,945.12

LEA : 114064003 Kutztown Area SD

Printed 11/2/2018 1:00:26 PM

Other Capital Projects Fund (39)

2300 Support Services – Administration

<u>Elementary</u>	<u>Secondary</u>	<u>Federal</u>	<u>Total</u>
-------------------	------------------	----------------	--------------

300 Purchased Professional and Technical Services

330 Other Professional Services			61,713.00
---------------------------------	--	--	-----------

Total Purchased Professional and Technical Services			\$61,713.00
--	--	--	--------------------

Total 2300 Support Services – Administration			\$61,713.00
---	--	--	--------------------

LEA : 114064003 Kutztown Area SD

Printed 11/2/2018 1:00:26 PM

Other Capital Projects Fund (39)

2390 Other Administration Services

	<u>Elementary</u>	<u>Secondary</u>	<u>Federal</u>	<u>Total</u>
300 <u>Purchased Professional and Technical Services</u>				
330 Other Professional Services				61,713.00
Total Purchased Professional and Technical Services				\$61,713.00
Total 2390 Other Administration Services				\$61,713.00

LEA : 114064003 Kutztown Area SD

Printed 11/2/2018 1:00:26 PM

Other Capital Projects Fund (39)

2600 Operation and Maintenance of Plant Services

Elementary

Secondary

Federal

Total

700 Property

752 Capital Equipment – Original and Additional

277,232.12

Total Property				\$277,232.12
Total 2600 Operation and Maintenance of Plant Services				\$277,232.12

LEA : 114064003 Kutztown Area SD

Printed 11/2/2018 1:00:26 PM

Other Capital Projects Fund (39)

2620 Operation of Buildings Services	<u>Elementary</u>	<u>Secondary</u>	<u>Federal</u>	<u>Total</u>
700 <u>Property</u>				
752 Capital Equipment – Original and Additional				277,232.12
Total Property				\$277,232.12
Total 2620 Operation of Buildings Services				\$277,232.12

LEA : 114064003 Kutztown Area SD

Printed 11/2/2018 1:00:29 PM

Other Capital Projects Fund (39)

4000 Facilities Acquisition, Construction and Improvement Services

Total

300 Purchased Professional and Technical Services

330 Other Professional Services	41,125.08
---------------------------------	-----------

Total Purchased Professional and Technical Services	\$41,125.08
--	--------------------

400 Purchased Property Services

450 Construction Services	2,320,849.76
---------------------------	--------------

Total Purchased Property Services	\$2,320,849.76
--	-----------------------

700 Property

762 Capitalized Equipment - Replacement	2,351,289.80
---	--------------

Total Property	\$2,351,289.80
-----------------------	-----------------------

Total 4000 Facilities Acquisition, Construction and Improvement Services	\$4,713,264.64
---	-----------------------

LEA : 114064003 Kutztown Area SD

Printed 11/2/2018 1:00:29 PM

Other Capital Projects Fund (39)

4400 Architecture and Engineering Services / Educational Specifications – Improvements	<u>Elementary</u>	<u>Secondary</u>	<u>Federal</u>	<u>Total</u>
300 <u>Purchased Professional and Technical Services</u>				
330 Other Professional Services				41,125.08
Total Purchased Professional and Technical Services				\$41,125.08
Total 4400 Architecture and Engineering Services / Educational Specifications – Improvements				\$41,125.08

Elementary

Secondary

Federal

Total

400 Purchased Property Services

2,320,849.76

\$2,320,849.76

2,351,289.80

\$2,351,289.80

\$4,672,139.56

LEA : 114064003 Kutztown Area SD

Printed 11/2/2018 1:00:33 PM

	<u>General Fund(10)</u>	<u>Public Purpose Trust(27)</u>	<u>Other Compt Approved (28)</u>	<u>Athletic / Activity(29)</u>	<u>Capital Reserve (690. 1850)(31)</u>
1000 <u>Instruction</u>					
1100 Regular Programs - Elementary / Secondary	12,998,868.72				
1200 Special Programs - Elementary / Secondary	4,284,026.92				
1300 Vocational Education	1,124,708.08				
1400 Other Instructional Programs - Elementary / Secondary	167,405.91				
1600 Adult Education Programs	3,895.84				
Total Instruction	\$18,578,905.47				
2000 <u>Support Services</u>					
2100 Support Services - Students	1,014,969.24				
2200 Support Services - Instructional Staff	1,829,522.78				
2300 Support Services - Administration	2,009,493.79				
2400 Support Services - Pupil Health	507,453.83				
2500 Support Services - Business	450,527.37				
2600 Operation and Maintenance of Plant Services	2,662,920.34				
2700 Student Transportation Services	1,375,480.38				
2800 Support Services - Central	23,990.63				
2900 Other Support Services	27,487.85				
Total Support Services	\$9,901,846.21				
3000 <u>Operation of Non-Instructional Services</u>					
3200 Student Activities	740,769.15				
3300 Community Services	15,334.55				
Total Operation of Non-Instructional Services	\$756,103.70				
4000 <u>Facilities Acquisition, Construction and Improvement Services</u>					
4400 Architecture and Engineering Services / Educational Specifications - Improvements					
4600 Existing Building Improvement Services	205,875.90				
Total Facilities Acquisition, Construction and Improvement	\$205,875.90				
5000 <u>Other Expenditures and Financing Uses</u>					
5100 Debt Service / Other Expenditures and Financing Uses	2,576,786.71				
5200 Interfund Transfers - Out	452,925.38				
Total Other Expenditures and Financing Uses	\$3,029,712.09				
TOTAL ACTUAL EXPENDITURES & OTHER FINANCING USES	\$32,472,443.37				

LEA : 114064003 Kutztown Area SD

Printed 11/2/2018 1:00:33 PM

	Capital Reserve (1431)(32)	Other Capital Projects Fund(39)	Debt Service(40)	Permanent(90)	Total
1000 Instruction					
1100 Regular Programs - Elementary / Secondary		4,045.99			13,002,914.71
1200 Special Programs - Elementary / Secondary					4,284,026.92
1300 Vocational Education					1,124,708.08
1400 Other Instructional Programs - Elementary / Secondary					167,405.91
1600 Adult Education Programs					3,895.84
Total Instruction		\$4,045.99			\$18,582,951.46
2000 Support Services					
2100 Support Services - Students					1,014,969.24
2200 Support Services - Instructional Staff					1,829,522.78
2300 Support Services - Administration		61,713.00			2,071,206.79
2400 Support Services - Pupil Health					507,453.83
2500 Support Services - Business					450,527.37
2600 Operation and Maintenance of Plant Services		277,232.12			2,940,152.46
2700 Student Transportation Services					1,375,480.38
2800 Support Services - Central					23,990.63
2900 Other Support Services					27,487.85
Total Support Services		\$338,945.12			\$10,240,791.33
3000 Operation of Non-Instructional Services					
3200 Student Activities					740,769.15
3300 Community Services					15,334.55
Total Operation of Non-Instructional Services					\$756,103.70
4000 Facilities Acquisition, Construction and Improvement Services					
4400 Architecture and Engineering Services / Educational Specifications - Improvements		41,125.08			41,125.08
4600 Existing Building Improvement Services		4,672,139.56			4,878,015.46
Total Facilities Acquisition, Construction and Improvement		\$4,713,264.64			\$4,919,140.54
5000 Other Expenditures and Financing Uses					
5100 Debt Service / Other Expenditures and Financing Uses					2,576,786.71
5200 Interfund Transfers - Out					452,925.38
Total Other Expenditures and Financing Uses					\$3,029,712.09
TOTAL ACTUAL EXPENDITURES & OTHER FINANCING USES		\$5,056,255.75			\$37,528,699.12

LEA : 114064003 Kutztown Area SD

Printed 11/2/2018 1:00:38 PM

PSERS Salary Data (Salary Data should relate to the General Fund only)

Amount	Description	Amount
	Total Salary Base for salaries subject to PSERS withholding	13,658,219.90
	Total Federally Funded salaries subject to PSERS withholding	373,033.74

Title I Expenditure Data

Amount	Description	Amount
	Expenditures Funded with Current Title I Funds	193,336.00
	Expenditures Funded with Carry over Title I Funds	
Total	Title I Expenditure Data	\$193,336.00

Benefits for Staff Relative to Collective Bargaining Agreements

	OBJECT	COVERED	NOT COVERED	TOTAL
10 General Fund	No Self Insurance data to report			
	211 Medical Insurance	1,527,076.65	1,115,452.44	2,642,529.09
	212 Dental Insurance	20,246.78	11,262.12	31,508.90
	215 Eye Care Insurance	9,496.12	6,476.05	15,972.17
	216 Prescription Insurance			
	271 Self-Insurance Medical Benefits			
	272 Self-Insurance Dental Benefits			
	275 Self-Insurance Eye Care Benefits			
	276 Self-Insurance Prescription Benefits			
	FUND TOTAL	\$1,556,819.55	\$1,133,190.61	\$2,690,010.16
50 Enterprise Fund	No Self Insurance data to report			
	211 Medical Insurance		33,190.56	33,190.56
	212 Dental Insurance		750.36	750.36
	215 Eye Care Insurance		376.96	376.96
	216 Prescription Insurance			
	271 Self-Insurance Medical Benefits			
	272 Self-Insurance Dental Benefits			
	275 Self-Insurance Eye Care Benefits			
	276 Self-Insurance Prescription Benefits			
	FUND TOTAL		\$34,317.88	\$34,317.88
60 Internal Service Fund	No Self Insurance data to report			
	211 Medical Insurance			
	212 Dental Insurance			
	215 Eye Care Insurance			
	216 Prescription Insurance			
	271 Self-Insurance Medical Benefits			
	272 Self-Insurance Dental Benefits			
	275 Self-Insurance Eye Care Benefits			
	276 Self-Insurance Prescription Benefits			
	FUND TOTAL			
Total of All Funds		\$1,556,819.55	\$1,167,508.49	\$2,724,328.04

LEA : 114064003 Kutztown Area SD

Printed 11/2/2018 1:00:40 PM

Function	Special Education (Prior Year)	Nonspecial Education (Prior Year)	Total (Prior Year)	Special Education (Current Year)	Nonspecial Education (Current Year)	Total (Current Year)
2120 Guidance Services	144,420.16	579,490.40	723,910.56	144,300.91	600,670.23	744,971.14
2140 Psychological Services	112,402.69		112,402.69	133,602.25		133,602.25
2150 Speech Pathology and Audiology Services						
2160 Social Work Services						
2260 Instruction and Curriculum Development Services	52,126.27	209,158.30	261,284.57	52,341.10	217,876.25	270,217.35
2350 Legal and Accounting Services	1,412.00	34,098.42	35,510.42	1,988.00	14,607.00	16,595.00
2420 Medical Services	21,243.78	85,241.32	106,485.10	25,157.44	104,720.94	129,878.38
2440 Nursing Services	69,402.16	278,478.32	347,880.48	73,119.81	304,370.19	377,490.00
2700 Student Transportation Services	349,264.75	764,670.09	1,113,934.84	352,298.90	772,743.10	1,125,042.00
Total	\$750,271.81	\$1,951,136.85	\$2,701,408.66	\$782,808.41	\$2,014,987.71	\$2,797,796.12

LEA : 114064003 Kutztown Area SD

Printed 11/2/2018 1:00:41 PM

(PRINCIPAL AMOUNTS ONLY)								
<u>GOVERNMENTAL FUNDS/ ACTIVITIES</u>	Short-Term Borrowing	General Obligation Bonds/Notes	Authority Building Obligations	Other Long-Term Debt	Other Post- Employment Benefits (OPEB)	Compensated Absences	Net Pension Liability	Total
1. Debt at Beginning of Fiscal Year		25,210,000.00			860,576.00	431,896.00	51,068,669.00	77,571,141.00
2. Additional Debt Incurred During Year		4,280,000.00			5,241,220.00		435,229.00	9,956,449.00
3. Retirements and Repayments		1,785,000.00				3,047.00		1,788,047.00
4. Debt at End of Fiscal Year		27,705,000.00			6,101,796.00	428,849.00	51,503,898.00	85,739,543.00
5. Accreted Interest at End Of Fiscal Year								
6. Total Debt and Accreted Interest		27,705,000.00			6,101,796.00	428,849.00	51,503,898.00	85,739,543.00
7. Current Portion P&I - Due within 1 year		2,503,981.04				70,132.00		2,574,113.04
8. Interest Paid during current fiscal year		521,103.55						521,103.55

(PRINCIPAL AMOUNTS ONLY)								
<u>PROPRIETARY FUNDS</u>	Short-Term Borrowing	General Obligation Bonds/Notes	Authority Building Obligations	Other Long-Term Debt	Other Post- Employment Benefits (OPEB)	Compensated Absences	Net Pension Liability	Total
1. Debt at Beginning of Fiscal Year							867,331.00	867,331.00
2. Additional Debt Incurred During Year					110,682.00			110,682.00
3. Retirements and Repayments							19,229.00	19,229.00
4. Debt at End of Fiscal Year					110,682.00		848,102.00	958,784.00
5. Accreted Interest at End Of Fiscal Year								
6. Total Debt and Accreted Interest					110,682.00		848,102.00	958,784.00
7. Current Portion P&I - Due within 1 year								
8. Interest Paid during current fiscal year								

LEA : 114064003 Kutztown Area SD

Printed 11/2/2018 1:00:41 PM

Total Principal and Interest Payments Made by Your School - All Funds

Function	Fund		Principal (910)	Principal (920)	Interest (830)	Total (Principal +Interest)	Misc Other Uses (990)
5110	10	General Fund	2,042,241.69		534,543.02	2,576,784.71	
5110	20	Special Revenue Funds					
5110	30	Capital Projects Funds					
5110	40	Debt Service Fund					
5110	90	Permanent Fund					
5120	10	General Fund					
5120	20	Special Revenue Funds					
5120	30	Capital Projects Funds					
5120	40	Debt Service Fund					
Total Debt Payments - Governmental Funds			\$2,042,241.69		\$534,543.02	\$2,576,784.71	

Function	Fund		Principal (910)	Principal (920)	Interest (830)	Total (Principal +Interest)
5110	50	Enterprise Fund				
5110	60	Internal Service Fund				
5120	50	Enterprise Fund				
5120	60	Internal Service Fund				
Total Debt Payments - Proprietary Funds						

LEA : 114064003 Kutztown Area SD

Printed 11/2/2018 1:00:41 PM

Debt Details
Governmental Funds/ Activities

Debt Category	Debt Issue Date (MM/YYYY)	Principal Amounts Only				Current Portion Due Within One Year (Principal and Interest)	Interest Paid During Fiscal Year
		Debt at Beginning of Fiscal Year	Additions	Reductions / Repayments	Debt at End of Fiscal Year		
General Obligation Bonds/Notes – CIB	03/2018		4,280,000.00		4,280,000.00	169,322.28	
General Obligation Bonds/Notes – CIB	05/2017	8,845,000.00		1,110,000.00	7,735,000.00	1,265,362.50	154,787.50
General Obligation Bonds/Notes – CIB	05/2017	3,030,000.00		5,000.00	3,025,000.00	123,706.26	98,963.55
General Obligation Bonds/Notes – CIB	10/2016	9,220,000.00		15,000.00	9,205,000.00	214,340.00	194,490.00
General Obligation Bonds/Notes – CIB	05/2013	4,115,000.00		655,000.00	3,460,000.00	731,250.00	72,862.50
Compensated Absences		431,896.00		3,047.00	428,849.00	70,132.00	
Other Post-Employment Benefits (OPEB)		860,576.00	5,241,220.00		6,101,796.00		
Net Pension Liability		51,068,669.00	435,229.00		51,503,898.00		
Totals for Debt Entered:		\$77,571,141.00	\$9,956,449.00	\$1,788,047.00	\$85,739,543.00	\$2,574,113.04	\$521,103.55

Bond Details
Proprietary Funds

Debt Category	Debt Issue Date (MM/YYYY)	Principal Amounts Only				Current Portion Due Within One Year (Principal and Interest)	Interest Paid During Fiscal Year
		Debt at Beginning of Fiscal Year	Additions	Reductions / Repayments	Debt at End of Fiscal Year		
Other Post-Employment Benefits (OPEB)			110,682.00		110,682.00		
Net Pension Liability		867,331.00		19,229.00	848,102.00		
Totals for Debt Entered:		\$867,331.00	\$110,682.00	\$19,229.00	\$958,784.00		

LEA : 114064003 Kutztown Area SD

General Fund (10)

Section 1: Tuition/Purchased Services as Reported within Expenditure Detail	Amount
Tuition Reported in General Fund Expenditures 1000-560	2,503,499.14
Purchased Services in General Fund Expenditures 1000-594 and 1000-597	
Section 1 Total	\$2,503,499.14

Section 2: Tuition Paid to Institution Types During Fiscal Year	Tuition Paid For Nonspecial Education	Tuition Paid For Special Education	Total
1 1306 Institutions			
2 Institutionalized Children's Programs			
3 Juveniles Incarcerated in Adult Facilities			
4 Residential Treatment Facilities			
5 Other Local Education Agencies	146.08	86,547.50	86,693.58
6 Brick and Mortar Charter Schools	653,138.79	188,674.62	841,813.41
7 Cyber Charter Schools	447,224.19	183,277.02	630,501.21
8 Career and Technology Centers	409,792.78	278,073.68	687,866.46
9 Approved Private Schools			
10 PA Chartered Schools for the Deaf and Blind			
11 Private Residential Rehabilitative Institutions			
12 Juvenile Detention Centers			
13 Special Program Jointures			
14 Other Tuition Not Included Elsewhere In This Section	89,122.82	167,501.66	256,624.48
Section 2 Total	\$1,599,424.66	\$904,074.48	\$2,503,499.14

1 .	<u>Student Transportation Services for Educational Field Trips</u>	8,280.36
2 .	<u>Student Transportation Services for Student Activities</u>	4,885.38
3 .	<u>Rental of Vehicles for Student Transportation Services</u>	
4 .	<u>Capital Reserve Funds</u>	

Include only district-owned transportation expenditures paid from State or local money.
DO NOT include federal expenditures or payments to contract service providers.
Contracted transportation services should not be recorded on this schedule.

LEA : 114064003 Kutztown Area SD

Printed 11/2/2018 1:00:44 PM

Food Service / Cafeteria Operations Fund (51)

1000 Instruction	Total
100 <u>Personnel Services – Salaries</u>	
100 Personnel Services – Salaries	212,804.00
Total Personnel Services – Salaries	\$212,804.00
200 <u>Personnel Services – Employee Benefits</u>	
210 Group Insurance – Contracted Provider	34,506.31
220 Social Security Contributions	15,990.06
230 PSERS Retirement Contributions	68,567.17
250 Unemployment Compensation	193.47
260 Workers' Compensation	1,616.55
280 Other Post-Employment Benefits (OPEB)	6,857.19
299 All Other Employee Benefits	15,973.25
Total Personnel Services – Employee Benefits	\$143,704.00
300 <u>Purchased Professional and Technical Services</u>	
340 Technical Services	2,043.00
Total Purchased Professional and Technical Services	\$2,043.00
400 <u>Purchased Property Services</u>	
430 Repairs and Maintenance Services	1,047.00
Total Purchased Property Services	\$1,047.00
500 <u>Other Purchased Services</u>	
530 Communications	54.00
580 Travel	1,551.00
591 Services Purchased Locally	12,498.00
Total Other Purchased Services	\$14,103.00
600 <u>Supplies</u>	
610 General Supplies	12,763.00
620 Energy	1,998.10
630 Food	243,674.09
650 Supplies & Fees – Technology Related	4,075.81
Total Supplies	\$262,511.00
700 <u>Property</u>	
740 Depreciation	12,145.00
Total Property	\$12,145.00
800 <u>Other Objects</u>	
810 Dues and Fees	139.00
830 Interest	(3,339.00)
890 Miscellaneous Expenditures	3,161.00
Total Other Objects	(\$39.00)
Total 1000 Instruction	\$648,318.00

LEA : 114064003 Kutztown Area SD

Printed 11/2/2018 1:00:44 PM

Food Service / Cafeteria Operations Fund (51)

1100 Regular Programs – Elementary / Secondary

Elementary Secondary Federal Total

100 Personnel Services – Salaries			
100 Personnel Services – Salaries			212,804.00
Total Personnel Services – Salaries			\$212,804.00
200 Personnel Services – Employee Benefits			
210 Group Insurance – Contracted Provider			34,506.31
220 Social Security Contributions			15,990.06
230 PSERS Retirement Contributions			68,567.17
250 Unemployment Compensation			193.47
260 Workers' Compensation			1,616.55
280 Other Post-Employment Benefits (OPEB)			6,857.19
299 All Other Employee Benefits			15,973.25
Total Personnel Services – Employee Benefits			\$143,704.00
300 Purchased Professional and Technical Services			
340 Technical Services			2,043.00
Total Purchased Professional and Technical Services			\$2,043.00
400 Purchased Property Services			
430 Repairs and Maintenance Services			1,047.00
Total Purchased Property Services			\$1,047.00
500 Other Purchased Services			
530 Communications			54.00
580 Travel			1,551.00
591 Services Purchased Locally			12,498.00
Total Other Purchased Services			\$14,103.00
600 Supplies			
610 General Supplies			12,763.00
620 Energy			1,998.10
630 Food			243,674.09
650 Supplies & Fees – Technology Related			4,075.81
Total Supplies			\$262,511.00
700 Property			
740 Depreciation			12,145.00
Total Property			\$12,145.00
800 Other Objects			
810 Dues and Fees			139.00
830 Interest			(3,339.00)
890 Miscellaneous Expenditures			3,161.00
Total Other Objects			(\$39.00)
Total 1100 Regular Programs – Elementary / Secondary			\$648,318.00

LEA : 114064003 Kutztown Area SD

Printed 11/2/2018 1:00:44 PM

Food Service / Cafeteria Operations Fund (51)

1110 Regular Programs

	<u>Elementary</u>	<u>Secondary</u>	<u>Federal</u>	<u>Total</u>
100 <u>Personnel Services – Salaries</u>				
100 Personnel Services – Salaries				212,804.00
Total Personnel Services – Salaries				\$212,804.00
200 <u>Personnel Services – Employee Benefits</u>				
210 Group Insurance – Contracted Provider				34,506.31
220 Social Security Contributions				15,990.06
230 PSERS Retirement Contributions				68,567.17
250 Unemployment Compensation				193.47
260 Workers' Compensation				1,616.55
280 Other Post-Employment Benefits (OPEB)				6,857.19
299 All Other Employee Benefits				15,973.25
Total Personnel Services – Employee Benefits				\$143,704.00
300 <u>Purchased Professional and Technical Services</u>				
340 Technical Services				2,043.00
Total Purchased Professional and Technical Services				\$2,043.00
400 <u>Purchased Property Services</u>				
430 Repairs and Maintenance Services				1,047.00
Total Purchased Property Services				\$1,047.00
500 <u>Other Purchased Services</u>				
530 Communications				54.00
580 Travel				1,551.00
591 Services Purchased Locally				12,498.00
Total Other Purchased Services				\$14,103.00
600 <u>Supplies</u>				
610 General Supplies				12,763.00
620 Energy				1,998.10
630 Food				243,674.09
650 Supplies & Fees – Technology Related				4,075.81
Total Supplies				\$262,511.00
700 <u>Property</u>				
740 Depreciation				12,145.00
Total Property				\$12,145.00
800 <u>Other Objects</u>				
810 Dues and Fees				139.00
830 Interest				(3,339.00)
890 Miscellaneous Expenditures				3,161.00
Total Other Objects				(\$39.00)
Total 1110 Regular Programs				\$648,318.00

	<u>Food Service(51)</u>	<u>Child Care Operations(52)</u>	<u>Other Enterprise(58)</u>	<u>Internal Service(60)</u>	<u>Total</u>
1000 Instruction					
1100 Regular Programs - Elementary / Secondary	648,318.00				648,318.00
Total Instruction	\$648,318.00				\$648,318.00
TOTAL ACTUAL EXPENDITURES & OTHER FINANCING USES	\$648,318.00				\$648,318.00