

LEA Name : Kutztown Area SD
Address : 251 Long Lane
Kutztown , PA 19530

County : Berks
AUN Number : 114064003
LEA Type : SD

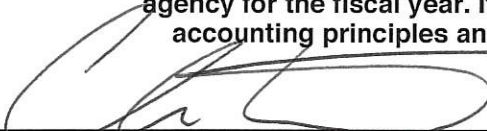
Annual Financial Report Accuracy Certification Statement

For Fiscal Year Ending
6/30/2019

Pennsylvania Department of Education
&
Office of Comptroller Operations

PDE-2056: Intermediate Unit
PDE-2057: School District, AVTS/CTC, Charter School,
and Special Program Jointure

CERTIFICATION: By signing this page I agree that the electronic data submitted is a complete and accurate statement of the financial operations and status of the local education agency for the fiscal year. It has been prepared in accordance with generally accepted accounting principles and established Commonwealth of PA reporting guidelines.



Chief School Administrator Signature

11/15/19

Date



Board Secretary Signature

11-15-19

Date

David Miller

Contact Person

dmiller869@kasd.org

Contact Person E-mail Address

(610)683-7361

Ext :

Contact Person Telephone Number

Contact Person Fax Number

Audit Certification
Annual Financial Report:
For Fiscal Year Ending **6/30/2019**
(Pursuant to PA School Code Section 218(b))

LEA Name : Kutztown Area SD
AUN Number : 114064003
County : Berks

Audit Certification Due: 12/31/2019

This certification is applicable to the Annual Financial Report data submitted
through the Consolidated Financial Reporting System on: 11/15/19
Date

Auditing Firm:

Herbein + Company, Inc.

CERTIFICATION: By signing this page I agree that the financial statements of the school have been properly audited as noted above pursuant to Article XXIV, and in the auditor's professional opinion, the Annual Financial Report (PDE-2057) submitted on the date referenced is materially consistent with the audited financial statements.

Chief School Administrator

[Signature] 11/15/19
Signature Date

Board Secretary

[Signature] 11-15-19
Signature Date

David Miller

Contact Person

dmiller869@kasd.org

Contact Person E-mail Address

(610)683-7361

Ext :

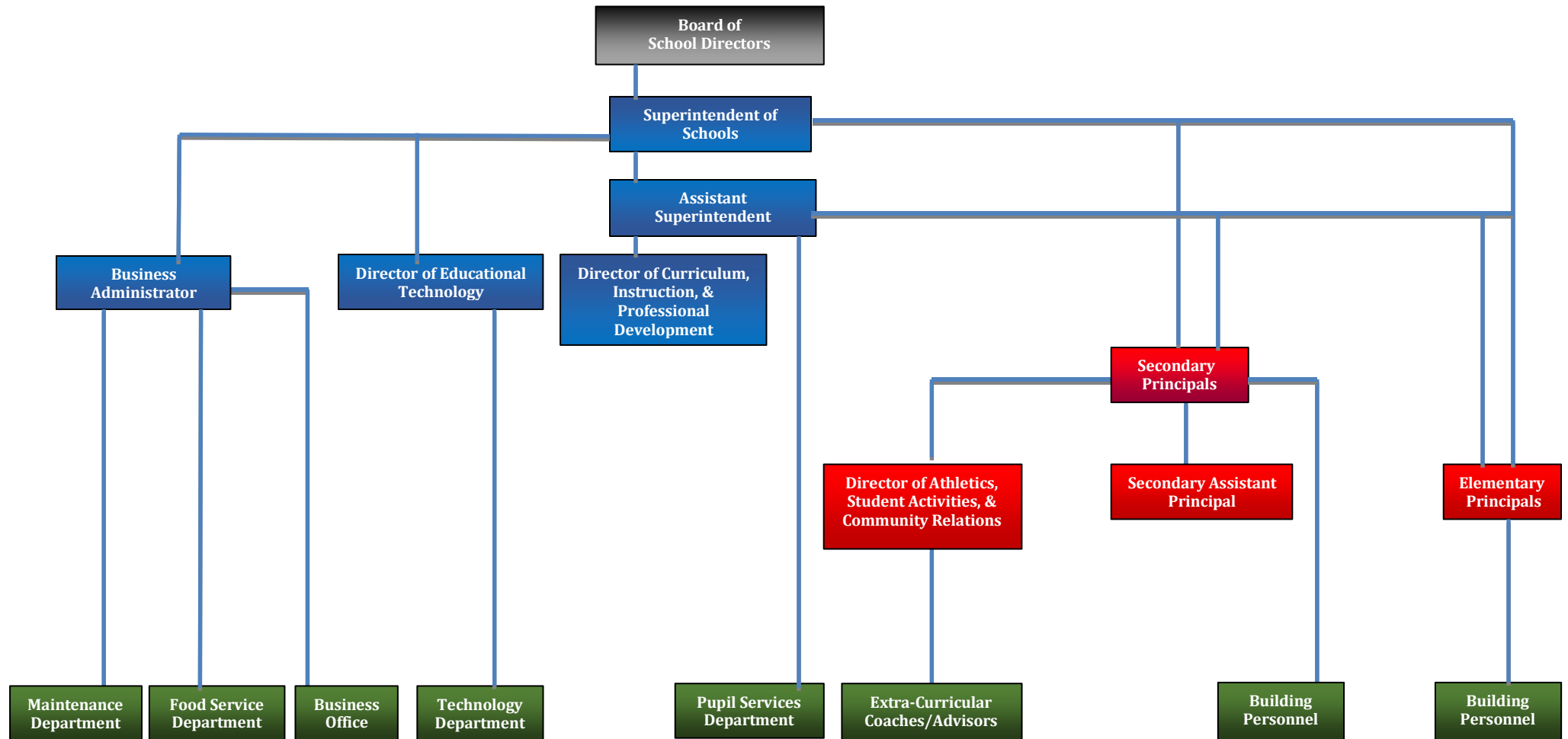
Contact Person Telephone Number

Contact Person Fax Number

KUTZTOWN AREA SCHOOL DISTRICT

No. 008

SECTION: LOCAL BOARD PROCEDURES
 TITLE: ORGANIZATION CHART
 ADOPTED: September 21, 2009
 REVISED: October 17, 2011 November 17, 2014
 October 15, 2012 September 21, 2015
 September 16, 2013 September 4, 2018



<u>Val Number</u>	<u>Description</u>	<u>Justification</u>
50450	SESS - 2350 Legal and Accounting Services: SESS Schedule amounts for Special Education vary from prior year by 40% or more. Correct the data or enter a justification. SESS Schedule 2350: \$11,479.50 Prior Year SESS Schedule 2350: \$1,988.00	More legal services were required in 18-19 than previous year.

LEA : 114064003 Kutztown Area SD

Printed 11/15/2019 10:49:16 AM

Amounts Expressed in Whole Dollars		<u>General Fund</u> <u>(10)</u>	<u>Public Purpose Trust</u> <u>(27)</u>	<u>Other Compt Approved</u> <u>(28)</u>	<u>Athletic / Activity</u> <u>(29)</u>	<u>Capital Reserve (690.</u> <u>1850)</u> <u>(31)</u>
Assets And Deferred Outflows Of Resources						
Assets						
0100	Cash and Cash Equivalents	542,026				
0110	Investments	6,107,872				
0120	Taxes Receivable	1,088,965				
0130	Due From Other Funds	145,846				
0141	Due From Other Governments	243,640				
0142	State Revenue Receivable	1,439,637				
0143	Federal Revenue Receivable	109,578				
0145	Other Intergovernmental Revenue Receivable					
0146	Due from Primary Government					
0147	Due from Component Unit					
0150	Other Receivables	2,366				
0170	Inventories					
0180	Prepaid Expenses (Expenditures)	58,655				
0190	Other Current Assets					
Total Assets		\$9,738,585				
0910	Deferred Outflows of Resources					
Total Assets And Deferred Outflows Of Resources		\$9,738,585				

LEA : 114064003 Kutztown Area SD

Printed 11/15/2019 10:49:16 AM

Amounts Expressed in Whole Dollars		<u>Capital Reserve (1431)</u> <u>(32)</u>	<u>Other Capital Projects</u> <u>Fund</u> <u>(39)</u>	<u>Debt Service</u> <u>(40)</u>	<u>Permanent</u> <u>(90)</u>	<u>Total Governmental</u> <u>Funds</u>
Assets And Deferred Outflows Of Resources						
Assets						
0100	Cash and Cash Equivalents		40,253			582,279
0110	Investments		718,906			6,826,778
0120	Taxes Receivable					1,088,965
0130	Due From Other Funds					145,846
0141	Due From Other Governments					243,640
0142	State Revenue Receivable					1,439,637
0143	Federal Revenue Receivable					109,578
0145	Other Intergovernmental Revenue Receivable					
0146	Due from Primary Government					
0147	Due from Component Unit					
0150	Other Receivables					2,366
0170	Inventories					
0180	Prepaid Expenses (Expenditures)					58,655
0190	Other Current Assets					
Total Assets			\$759,159			\$10,497,744
0910	Deferred Outflows of Resources					
Total Assets And Deferred Outflows Of Resources			\$759,159			\$10,497,744

LEA : 114064003 Kutztown Area SD

Printed 11/15/2019 10:49:16 AM

Amounts Expressed in Whole Dollars	<u>General Fund</u> <u>(10)</u>	<u>Public Purpose Trust</u> <u>(27)</u>	<u>Other Compt Approved</u> <u>(28)</u>	<u>Athletic / Activity</u> <u>(29)</u>	<u>Capital Reserve (690.</u> <u>1850)</u> <u>(31)</u>
Liabilities And Deferred Inflows Of Resources And Fund Balances					
Liabilities					
0400 Due to Other Funds					
0411 Due to Other Governments					
0412 Due to Primary Government					
0413 Due to Component Unit					
0420 Accounts Payable	278,460				
0430 Contracts Payable					
0440 Current Portion of Long-Term Debt					
0450 Short-Term Payables	1,351,164				
0461 Accrued Salaries and Benefits	1,338,357				
0462 Payroll Deductions and Withholding	141,996				
0480 Unearned Revenues	786,701				
0490 Other Current Liabilities	90,575				
Total Liabilities	\$3,987,253				
0950 Deferred Inflows of Resources					
Fund Balances					
0810 Nonspendable Fund Balance	58,655				
0820 Restricted Fund Balance					
0830 Committed Fund Balance	3,033,536				
0840 Assigned Fund Balance					
0850 Unassigned Fund Balance	2,659,141				
Total Fund Balances	\$5,751,332				
Total Liabilities, Deferred Inflows Of Resources And Fund Balances	\$9,738,585				

LEA : 114064003 Kutztown Area SD

Printed 11/15/2019 10:49:16 AM

Amounts Expressed in Whole Dollars		<u>Capital Reserve (1431)</u> <u>(32)</u>	<u>Other Capital Projects</u> <u>Fund</u> <u>(39)</u>	<u>Debt Service</u> <u>(40)</u>	<u>Permanent</u> <u>(90)</u>	<u>Total Governmental</u> <u>Funds</u>
Liabilities And Deferred Inflows Of Resources And Fund Balances						
Liabilities						
0400	Due to Other Funds					
0411	Due to Other Governments					
0412	Due to Primary Government					
0413	Due to Component Unit					
0420	Accounts Payable		24,673			303,133
0430	Contracts Payable					
0440	Current Portion of Long-Term Debt					
0450	Short-Term Payables					1,351,164
0461	Accrued Salaries and Benefits					1,338,357
0462	Payroll Deductions and Withholding					141,996
0480	Unearned Revenues		17,078			803,779
0490	Other Current Liabilities					90,575
Total Liabilities			\$41,751			\$4,029,004
0950	Deferred Inflows of Resources					
Fund Balances						
0810	Nonspendable Fund Balance					58,655
0820	Restricted Fund Balance		717,408			717,408
0830	Committed Fund Balance					3,033,536
0840	Assigned Fund Balance					
0850	Unassigned Fund Balance					2,659,141
Total Fund Balances			\$717,408			\$6,468,740
Total Liabilities, Deferred Inflows Of Resources And Fund Balances			\$759,159			\$10,497,744

Amounts Expressed in Whole Dollars	<u>General Fund</u> <u>(10)</u>	<u>Public Purpose Trust</u> <u>(27)</u>	<u>Other Compt Approved</u> <u>(28)</u>	<u>Athletic / Activity</u> <u>(29)</u>	<u>Capital Reserve (690.</u> <u>1850)</u> <u>(31)</u>
Revenues					
6000 Revenue from Local Sources	23,179,304				
7000 Revenue from State Sources	9,042,308				
8000 Revenue from Federal Sources	417,750				
Total Revenues	\$32,639,362				
Expenditures					
1000 Instruction	19,149,529				
2000 Support Services	10,110,557				
3000 Operation of Non-Instructional Services	784,857				
4000 Facilities Acquisition, Construction and Improvement Services					
5110 Debt Service	2,739,745				
5130 Refund of Prior Year Revenues / Receipts	12				
Total Expenditures	\$32,784,700				
Excess (Deficiency) Of Revenues Over Expenditures	(\$145,338)				
Other Financing Sources (Uses)					
9110 Face Value of Bonds Issued					
9120 Proceeds from Refunding of Bonds					
9130 Bond Premiums					
9200 Proceeds from Extended-Term Financing					
9300 Interfund Transfers - IN	33,874				
9400 Sale of or Compensation for Loss of Fixed Assets	52,968				
9710 Transfers from Component Units					
9720 Transfers from Primary Governments					
9910 Other Financing Sources Not Listed in the 9000 Series					
9990 Insurance Recoveries					
5120 Debt Service – Refunded Bonds					
5150 Bond Discounts					
5200 Interfund Transfers – Out	63,555				
5300 Transfers Out to Component Units/Primary Governments					
Total Other Financing Sources (Uses)	\$23,287				

Amounts Expressed in Whole Dollars		<u>Capital Reserve (1431</u> <u>(32)</u>	<u>Other Capital Projects</u> <u>Fund</u> <u>(39)</u>	<u>Debt Service</u> <u>(40)</u>	<u>Permanent</u> <u>(90)</u>	<u>Total Governmental</u> <u>Funds</u>
Revenues						
6000	Revenue from Local Sources		36,495			23,215,799
7000	Revenue from State Sources					9,042,308
8000	Revenue from Federal Sources					417,750
Total Revenues			\$36,495			\$32,675,857
Expenditures						
1000	Instruction		6,579			19,156,108
2000	Support Services		2,395,769			12,506,326
3000	Operation of Non-Instructional Services					784,857
4000	Facilities Acquisition, Construction and Improvement Services		58,210			58,210
5110	Debt Service					2,739,745
5130	Refund of Prior Year Revenues / Receipts					12
Total Expenditures			\$2,460,558			\$35,245,258
Excess (Deficiency) Of Revenues Over Expenditures			(\$2,424,063)			(\$2,569,401)
Other Financing Sources (Uses)						
9110	Face Value of Bonds Issued					
9120	Proceeds from Refunding of Bonds					
9130	Bond Premiums					
9200	Proceeds from Extended-Term Financing					
9300	Interfund Transfers - IN		63,555			97,429
9400	Sale of or Compensation for Loss of Fixed Assets					52,968
9710	Transfers from Component Units					
9720	Transfers from Primary Governments					
9910	Other Financing Sources Not Listed in the 9000 Series					
9990	Insurance Recoveries					
5120	Debt Service – Refunded Bonds					
5150	Bond Discounts					
5200	Interfund Transfers – Out					63,555
5300	Transfers Out to Component Units/Primary Governments					
Total Other Financing Sources (Uses)			\$63,555			\$86,842

Amounts Expressed in Whole Dollars		<u>General Fund</u> <u>(10)</u>	<u>Public Purpose Trust</u> <u>(27)</u>	<u>Other Compt Approved</u> <u>(28)</u>	<u>Athletic / Activity</u> <u>(29)</u>	<u>Capital Reserve</u> <u>(690.</u> <u>1850)</u> <u>(31)</u>
Special And Extraordinary Items						
9920	Special Items – Gains					
9930	Extraordinary Items – Gains					
5520	Special Items – Losses					
5530	Extraordinary Items – Losses					
Net Change In Fund Balances		(\$122,051)				
Fund Balance						
0001	Fund Balance - Beginning of Fiscal Year	5,873,383				
Fund Balance - End Of Year		\$5,751,332				

Amounts Expressed in Whole Dollars		<u>Capital Reserve (1431)</u> <u>(32)</u>	<u>Other Capital Projects</u> <u>Fund</u> <u>(39)</u>	<u>Debt Service</u> <u>(40)</u>	<u>Permanent</u> <u>(90)</u>	<u>Total Governmental</u> <u>Funds</u>
Special And Extraordinary Items						
9920	Special Items – Gains					
9930	Extraordinary Items – Gains					
5520	Special Items – Losses					
5530	Extraordinary Items – Losses					
Net Change In Fund Balances			(\$2,360,508)			(\$2,482,559)
Fund Balance						
0001	Fund Balance - Beginning of Fiscal Year		3,077,916			8,951,299
Fund Balance - End Of Year			\$717,408			\$6,468,740

LEA : 114064003 Kutztown Area SD

Printed 11/15/2019 10:49:28 AM

Amounts Expressed in Whole Dollars	Food Service (51)	Child Care Operations (52)	Other Enterprise (58)	TOTAL	Internal Service (60)
Assets And Deferred Outflows Of Resources					
Current Assets					
0100 Cash and Cash Equivalents	551,003			551,003	
0110 Investments					
0130 Due From Other Funds					
0141 Due From Other Governments					
0142 State Revenue Receivable	19			19	
0143 Federal Revenue Receivable	283			283	
0146 Due from Primary Government					
0147 Due from Component Unit					
0150 Other Receivables					
0170 Inventories	17,131			17,131	
0180 Prepaid Expenses (Expenditures)					
0190 Other Current Assets					
Total Current Assets	\$568,436			\$568,436	
Noncurrent Assets					
0211 Land					
0212 Site Improvements (Net)					
0220 Buildings and Building Improvements (Net)					
0230 Machinery, Equipment and Furniture (Net)	156,978			156,978	
0250 Construction in Progress					
0260 Long Term Prepayments					
0290 Other Noncurrent Assets					
Total Noncurrent Assets	\$156,978			\$156,978	
0910 Deferred Outflows of Resources	119,083			119,083	
Total Assets And Deferred Outflows Of Resources	\$844,497			\$844,497	

LEA : 114064003 Kutztown Area SD

Printed 11/15/2019 10:49:28 AM

Amounts Expressed in Whole Dollars	Food Service (51)	Child Care Operations (52)	Other Enterprise (58)	TOTAL	Internal Service (60)
Liabilities And Deferred Inflows Of Resources And Net Position					
Current Liabilities					
0400 Due to Other Funds	145,846			145,846	
0411 Due to Other Governments					
0413 Due to Component Unit					
0420 Accounts Payable	895			895	
0430 Contracts Payable					
0440 Current Portion of Long-Term Debt					
0450 Short-Term Payables					
0461 Accrued Salaries and Benefits					
0462 Payroll Deductions and Withholding					
0480 Unearned Revenues					
0490 Other Current Liabilities	12,543			12,543	
Total Current Liabilities	\$159,284			\$159,284	
Noncurrent Liabilities					
0510 Bonds Payable					
0520 Extended-Term Financing Agreements Payable					
0530 Lease-Purchase Obligations					
0540 Accumulated Compensated Absences					
0550 Authority Lease Obligations					
0560 Other Post-Employment Benefits (OPEB)	109,202			109,202	
0570 Net Pension Liability					
0599 Other Noncurrent Liabilities	751,518			751,518	
Total Noncurrent Liabilities	\$860,720			\$860,720	
Total Liabilities	\$1,020,004			\$1,020,004	
0950 Deferred Inflows of Resources	95,553			95,553	
Net Position					
0791 Net Investment in Capital Assets	156,979			156,979	
0008 Restricted Net Position (0792 – 0798)					
0799 Unrestricted Net Position	(428,039)			(428,039)	
Total Net Position	(\$271,060)			(\$271,060)	
Total Liabilities And Deferred Inflows Of Resources And Net Position	\$844,497			\$844,497	

Amounts Expressed in Whole Dollars	Food Service (51)	Child Care Operations (52)	Other Enterprise (58)	TOTAL	Internal Service (60)
Operating Revenues					
6600 Food Service Revenue	256,131			256,131	
0071 Charges for Services					
0072 Other Operating Revenue	22,398			22,398	
Total Operating Revenues	\$278,529			\$278,529	
Operating Expenses					
100 Personnel Services – Salaries	206,314			206,314	
200 Personnel Services – Employee Benefits	119,087			119,087	
300 Purchased Professional and Technical Services	1,640			1,640	
400 Purchased Property Services	11,260			11,260	
500 Other Purchased Services	21,927			21,927	
600 Supplies	273,325			273,325	
740 Depreciation	12,350			12,350	
810 Dues and Fees	260			260	
890 Miscellaneous Expenditures					
Total Operating Expenses	\$646,163			\$646,163	
Operating Income (Loss)	(\$367,634)			(\$367,634)	
Non Operating Revenues (Expenses)					
6500 Earnings on Investments	8,740			8,740	
6920 Contributions and Donations from Private Sources					
6930 Gains or Losses on Sale of Fixed Assets					
6991 Refunds of a Prior Year Expenditure					
7000 Revenue from State Sources	58,953			58,953	
8000 Revenue from Federal Sources	287,371			287,371	
9990 Insurance Recoveries					
820 Claims and Judgments Against the LEA					
830 Interest					
TOTAL Non Operating Revenues (Expenses)	\$355,064			\$355,064	
Income (Loss) Before Contributions And Transfers	(\$12,570)			(\$12,570)	

Amounts Expressed in Whole Dollars	<u>Food Service</u> <u>(51)</u>	<u>Child Care Operations</u> <u>(52)</u>	<u>Other Enterprise</u> <u>(58)</u>	<u>TOTAL</u>	<u>Internal Service</u> <u>(60)</u>
Contributions, Transfers, and Special and Extraordinary Items					
5200 Interfund Transfers – Out	33,874			33,874	
5300 Transfers Out to Component Units/Primary Governments					
5520 Special Items – Losses					
5530 Extraordinary Items – Losses					
9300 Interfund Transfers - IN					
9500 Capital Contributions					
9700 Transfers IN From Component Units/Primary Governments					
9920 Special Items – Gains					
9930 Extraordinary Items – Gains					
Change In Net Position	(\$46,444)			(\$46,444)	
0002 Net Position - Beginning of Fiscal Year	(224,616)			(224,616)	
0003 Accounting Changes / Residual Equity Transfers					
Net Position - End Of Year	(\$271,060)			(\$271,060)	

LEA : 114064003 Kutztown Area SD

Printed 11/15/2019 10:49:43 AM

Amounts Expressed in Whole Dollars	<u>Food Service</u> <u>(51)</u>	<u>Child Care Operations</u> <u>(52)</u>	<u>Other Enterprise</u> <u>(58)</u>	<u>TOTAL</u>	<u>Internal Service(60)</u>
Cash Flows From Operating Activities					
0011 Cash Receipts From Users	280,255			280,255	
0012 Cash Receipts From Assessments Made to Other Funds					
0013 Cash Receipts From Earnings on Investments					
0014 Cash Receipts From Other Operating Revenue					
0015 Cash Payments To Employees For Services	271,729			271,729	
0016 Cash Payments For Insurance Claims					
0017 Cash Payments To Suppliers For Goods and Services	265,475			265,475	
0018 Cash Payments For Other Operating Expenses					
Net Cash Provided By (Used For) Operating Activities	(\$256,949)			(\$256,949)	
Cash Flows From Non-Capital Financing Activities					
0021 Receipts From Local Sources - 6000					
0022 Receipts From State Sources - 7000	59,421			59,421	
0023 Receipts From Federal Sources -8000	247,855			247,855	
0024 Notes and Loans Received (Repaid)					
0025 Interest Paid on Notes/Loans - 5100-830					
0026 Operating Transfers In (Out)/Residual Equity Trans					
0027 Operating Transfers In (Out) Primary Government / Comp Unit	(33,874)			(33,874)	
0028 Receipts From Refund of Prior Year Expenditures - 6991					
0029 Special and Extraordinary Gains (losses)					
0030 Receipts from Insurance Recoveries -9990					
Net Cash Prov By (Used for) Non-Capital Financing Activities	\$273,402			\$273,402	
Cash Flows From Capital and Related Financing Activities					
0031 Payments For Fac Acq, Const, and Imp - 4000	(6,008)			(6,008)	
0032 Gain / (Loss) on Sale of Fixed Assets - 6930					
0033 Proceeds From Extended Term Financing - 9200					
0034 Principal Paid on Financing Agreements					
0035 Interest Paid on Financing Agreements - 5100-830					
0036 (Inc) Dec in Contributed Capital					
Net Cash Prov By (Used for) Capital and Related Financing Activities	(\$6,008)			(\$6,008)	
Cash Flows From Investing Activities					
0041 Earnings on Investments - 6500	8,740			8,740	
0042 Purchase of Inv Securities / Deposits to Inv Pools					
0043 Receipts From Investment Pool Withdrawals					
0044 Proceeds from Sale and Maturity of Inv Securities					

LEA : 114064003 Kutztown Area SD

Printed 11/15/2019 10:49:43 AM

0045 Loans Received (Paid)

Net Cash Prov By (Used for) Investing Activities	\$8,740	\$8,740
--	---------	---------

LEA : 114064003 Kutztown Area SD

Printed 11/15/2019 10:49:43 AM

	<u>Food Service</u> <u>(51)</u>	<u>Child Care Operations</u> <u>(52)</u>	<u>Other Enterprise</u> <u>(58)</u>	<u>TOTAL</u>	<u>Internal Service</u> <u>(60)</u>
Net Increase (Decrease) in Cash Flows	19,185			19,185	
0004 Cash and Cash Equivalents Beginning of Year	531,818			531,818	
Cash and Cash Equivalents at Year End	\$551,003			\$551,003	
<hr/>					
Reconciliation of Operating Income (Loss) To Net Cash Provided by (Used For) Operating Activities					
0005 Operating Income (Loss) per REP	(367,634)			(367,634)	
Adjustments					
0051 Depreciation and Net Amortization	12,350			12,350	
0052 Provision for Uncollectible Accounts					
0053 Other Adjustments	45,924			45,924	
Effect of Changes in Assets, Liabilities, Deferred Outflows and Deferred Inflows					
0054 (Inc) Dec In Accounts Receivable (0120-0150)					
0055 Advances to Other Funds (0160)					
0056 (Inc) Dec in Inventories (0170)	(3,869)			(3,869)	
0057 (Inc) Dec in Prepaid Expenses (0180)					
0058 (Inc) Dec in Other Current or Noncurrent Assets					
0064 Deferred Outflows (0910)	33,570			33,570	
0059 Inc (Dec) in Accounts Payable (0400-0450)	883			883	
0060 Inc (Dec) in Accrued Salaries/Benefits (0461)					
0065 Inc (Dec) in Net Pension Liabilities (0570)	(96,584)			(96,584)	
0066 Inc (Dec) in Other Postemp Benefit Oblig (0560)	(1,480)			(1,480)	
0061 Inc (Dec) in Payroll Deductions/Withholding (0462)					
0062 Inc (Dec) in Unearned Revenue (0480)	1,726			1,726	
0063 Inc (Dec) in Other Current or Noncurrent Liabilities	66,823			66,823	
0067 Deferred Inflows (0950)	51,342			51,342	
Total Adjustments	\$110,685			\$110,685	
Cash Provided By (Used for) Total	(\$256,949)			(\$256,949)	

COMBINED STATEMENT OF CASH FLOWS
SCHEDULE OF NONCASH INVESTING, CAPITAL, AND FINANCING ACTIVITIES

Explanation of Transaction and Balance Sheet Effect	Amount
Commodities from US Dept of Agriculture	45,924
Total	\$45,924

LEA : 114064003 Kutztown Area SD

Printed 11/15/2019 10:49:45 AM

Amounts Expressed in Whole Dollars	<u>Private Purpose Trust</u> <u>(71)</u>	<u>Investment Trust</u> <u>(72)</u>	<u>Pension Trust</u> <u>(73)</u>	<u>Activity</u> <u>(81)</u>
Assets And Deferred Outflows Of Resources				
Assets				
0100 Cash and Cash Equivalents	67,206			
0110 Investments				
0130 Due From Other Funds				
0147 Due from Component Unit				
0150 Other Receivables				
0170 Inventories				
0180 Prepaid Expenses (Expenditures)				
0190 Other Current Assets				
0220 Buildings and Building Improvements (Net)				
0230 Machinery, Equipment and Furniture (Net)				
Total Assets	\$67,206			
0910 Deferred Outflows of Resources				
Total Assets And Deferred Outflows Of Resources	\$67,206			

LEA : 114064003 Kutztown Area SD

Printed 11/15/2019 10:49:45 AM

Amounts Expressed in Whole Dollars		<u>Other Agency</u> <u>(89)</u>	<u>Discrete Component Units</u> <u>(98)</u>	<u>Discrete Component Units</u> <u>(99)</u>	<u>Total Fiduciary Funds</u>
Assets And Deferred Outflows Of Resources					
Assets					
0100	Cash and Cash Equivalents				67,206
0110	Investments				
0130	Due From Other Funds				
0147	Due from Component Unit				
0150	Other Receivables				
0170	Inventories				
0180	Prepaid Expenses (Expenditures)				
0190	Other Current Assets				
0220	Buildings and Building Improvements (Net)				
0230	Machinery, Equipment and Furniture (Net)				
Total Assets					\$67,206
0910	Deferred Outflows of Resources				
Total Assets And Deferred Outflows Of Resources					\$67,206

LEA : 114064003 Kutztown Area SD

Printed 11/15/2019 10:49:45 AM

Amounts Expressed in Whole Dollars	<u>Private Purpose Trust</u> (71)	<u>Investment Trust</u> (72)	<u>Pension Trust</u> (73)	<u>Activity</u> (81)
Liabilities, Deferred Inflows Of Resources And Net Position				
Liabilities				
0400 Due to Other Funds				
0411 Due to Other Governments				
0412 Due to Primary Government				
0413 Due to Component Unit				
0420 Accounts Payable				
0430 Contracts Payable				
0450 Short-Term Payables				
0461 Accrued Salaries and Benefits				
0462 Payroll Deductions and Withholding				
0480 Unearned Revenues				
0490 Other Current Liabilities	67,206			
Total Liabilities	\$67,206			
0950 Deferred Inflows of Resources				
Net Position				
0791 Net Investment in Capital Assets				
0009 Restricted Net Position (0792 – 0798)				
0799 Unrestricted Net Position				
Total Net Position				
Total Liabilities, Deferred Inflows Of Resources And Net Position	\$67,206			

LEA : 114064003 Kutztown Area SD

Printed 11/15/2019 10:49:45 AM

Amounts Expressed in Whole Dollars		<u>Other Agency</u>	<u>Discrete Component Units</u>	<u>Discrete Component Units</u>	<u>Total Fiduciary Funds</u>
		(89)	(98)	(99)	
Liabilities, Deferred Inflows Of Resources And Net Position					
Liabilities					
0400	Due to Other Funds				
0411	Due to Other Governments				
0412	Due to Primary Government				
0413	Due to Component Unit				
0420	Accounts Payable				
0430	Contracts Payable				
0450	Short-Term Payables				
0461	Accrued Salaries and Benefits				
0462	Payroll Deductions and Withholding				
0480	Unearned Revenues				
0490	Other Current Liabilities				67,206
Total Liabilities					\$67,206
0950	Deferred Inflows of Resources				
Net Position					
0791	Net Investment in Capital Assets				
0009	Restricted Net Position (0792 – 0798)				
0799	Unrestricted Net Position				
Total Net Position					
Total Liabilities, Deferred Inflows Of Resources And Net Position					\$67,206

LEA : 114064003 Kutztown Area SD

General Fund (10)

Printed 11/15/2019 10:49:49 AM

Page - 1 of 4

	Revenue Reported In Current Year	Current Year Tax Accrual	Prior Year Tax Accrual	Taxes Collected In Current Year
Revenue from Local Sources				
6111 Current Real Estate Taxes	19,562,336.50			19,562,336.50
6112 Interim Real Estate Taxes	98,409.57			98,409.57
6113 Public Utility Realty Taxes	22,206.73			22,206.73
6114 Payments in Lieu of Current Taxes - State / Local	12,231.34			12,231.34
6120 Current Per Capita Taxes, Section 679	32,333.40			32,333.40
6141 Current Act 511 Per Capita Taxes	32,333.40			32,333.40
6143 Current Act 511 Local Services Taxes	36,749.50			36,749.50
6151 Current Act 511 Earned Income Taxes	1,681,964.79			1,681,964.79
6153 Current Act 511 Real Estate Transfer Taxes	286,339.07			286,339.07
6154 Current Act 511 Amusement Taxes	24,501.41			24,501.41
6411 Delinquent Real Estate Taxes	675,910.21			675,910.21
6420 Delinquent Per Capita Taxes, Section 679	5,284.17			5,284.17
6440 Delinquent Local Enabling Taxes - Flat Rate Assessments	5,284.18			5,284.18
6500 Earnings on Investments	232,267.80			
6700 Revenues from LEA Activities	66,546.42			
6832 Federal IDEA Revenue Received as Pass Through	243,640.17			
6910 Rentals	92,933.87			
6920 Contributions and Donations from Private Sources	13,600.00			
6942 Summer School Tuition	2,360.00			
6949 Other Tuition from Patrons	45,137.99			
6999 Other Revenues Not Specified Above	6,933.18			
TOTAL Revenue from Local Sources	\$23,179,303.70			\$22,475,884.27

	Revenue Reported In Current Year			
Revenue from State Sources				
7110 Basic Education Funding	3,415,720.84			
7160 Tuition for Orphans Subsidy	140,842.46			
7220 Vocational Education	34,265.64			
7271 Special Education funds for School-Aged Pupils	919,996.13			
7299 Program Revenues Not Listed Previously in the 7200 Series	2,441.47			
7311 Pupil Transportation Subsidy	717,434.23			
7320 Rental and Sinking Fund Payments / Building Reimbursement Subsidy	249,332.51			
7330 Health Services (Medical, Dental, Nurse, Act 25)	24,704.30			
7340 State Property Tax Reduction Allocation	611,209.59			
7505 Ready to Learn Block Grant	140,805.00			
7810 State Share of Social Security and Medicare Taxes	500,246.90			
7820 State Share of Retirement Contributions	2,285,308.97			
TOTAL Revenue from State Sources	\$9,042,308.04			

	Revenue Reported In Current Year			
<u>Revenue from Federal Sources</u>				
8514 NCLB, Title I - Improving the Academic Achievement of the Disadvantaged	248,487.00			
8515 NCLB, Title II - Preparing, Training and Recruiting High Quality Teachers and Principals	50,248.00			
8517 NCLB, Title IV - 21St Century Schools	14,521.00			
8810 School-Based Access Medicaid Reimbursement Program (SBAP) Reimbursements (Access)	100,000.00			
8820 Medical Assistance Reimbursement for Administrative Claiming (Quarterly) Program	4,493.68			
TOTAL Revenue from Federal Sources	\$417,749.68			

					Revenue Reported In Current Year			
<u>Other Financing Sources</u>								
9350	Enterprise Fund Transfers				33,874.01			
9400	Sale of or Compensation for Loss of Fixed Assets				52,967.50			
TOTAL Other Financing Sources					\$86,841.51			
TOTAL FROM ALL SOURCES					\$32,726,202.93	\$22,475,884.27		

Revenue from Local Sources	23,179,303.70
Revenue from State Sources	9,042,308.04
Revenue from Federal Sources	417,749.68
Other Financing Sources	86,841.51
TOTAL FROM ALL SOURCES	\$32,726,202.93

LEA : 114064003 Kutztown Area SD

Printed 11/15/2019 10:49:58 AM

General Fund (10)

1000 Instruction	Total
100 <u>Personnel Services – Salaries</u>	
100 Personnel Services – Salaries	9,865,890.04
Total Personnel Services – Salaries	\$9,865,890.04
200 <u>Personnel Services – Employee Benefits</u>	
210 Group Insurance – Contracted Provider	1,894,691.59
220 Social Security Contributions	724,188.73
230 PSERS Retirement Contributions	3,239,970.67
250 Unemployment Compensation	13,926.55
260 Workers' Compensation	52,183.69
299 All Other Employee Benefits	83,015.90
Total Personnel Services – Employee Benefits	\$6,007,977.13
300 <u>Purchased Professional and Technical Services</u>	
322 Professional Educational Services – Ius	21,201.26
323 Professional Educational Services – Other Educational Agencies	13,511.60
329 Professional Educational Services – Other	313,030.54
390 Other Purchased Professional and Technical Services	14,765.70
Total Purchased Professional and Technical Services	\$362,509.10
400 <u>Purchased Property Services</u>	
430 Repairs and Maintenance Services	18,218.73
440 Rentals	14,781.34
Total Purchased Property Services	\$33,000.07
500 <u>Other Purchased Services</u>	
510 Student Transportation Services	32,286.96
561 Tuition To Other School Districts Within the State	166,895.86
562 Tuition To Pennsylvania Charter Schools	1,442,604.19
563 Tuition To Nonpublic Schools	92,994.00
564 Tuition To Career and Technology Centers	561,694.18
567 Tuition To Approved Private Schools (APS) and PA Chartered Schools for the Deaf and Blind	22,110.19
568 Tuition To Private Residential Rehabilitative Institutions (PRRI) [In-State] and Detention Centers	30,617.62
569 Tuition – Other	78,576.00
580 Travel	482.60
Total Other Purchased Services	\$2,428,261.60
600 <u>Supplies</u>	
610 General Supplies	279,717.00
630 Food	112.84
640 Books and Periodicals	52,069.56
Total Supplies	\$331,899.40
700 <u>Property</u>	
752 Capital Equipment – Original and Additional	17,586.50
758 Capitalized Technology Software - Original	102,405.11
Total Property	\$119,991.61
Total 1000 Instruction	\$19,149,528.95

LEA : 114064003 Kutztown Area SD

Printed 11/15/2019 10:49:58 AM

General Fund (10)

1100 Regular Programs – Elementary / Secondary	Elementary	Secondary	Federal	Total
100 Personnel Services – Salaries				
100 Personnel Services – Salaries	3,226,382.90	3,883,681.77	150,740.80	7,260,805.47
Total Personnel Services – Salaries	\$3,226,382.90	\$3,883,681.77	\$150,740.80	\$7,260,805.47
200 Personnel Services – Employee Benefits				
210 Group Insurance – Contracted Provider	600,913.20	601,251.88	7,114.14	1,209,279.22
220 Social Security Contributions	237,524.42	288,174.10	11,035.59	536,734.11
230 PSERS Retirement Contributions	1,056,948.63	1,281,380.80	50,392.64	2,388,722.07
250 Unemployment Compensation	4.82	13,921.73		13,926.55
260 Workers' Compensation	17,002.25	20,683.97	798.45	38,484.67
299 All Other Employee Benefits	42,286.70	31,156.20		73,442.90
Total Personnel Services – Employee Benefits	\$1,954,680.02	\$2,236,568.68	\$69,340.82	\$4,260,589.52
300 Purchased Professional and Technical Services				
322 Professional Educational Services – Ius	4.50	2,940.03		2,944.53
323 Professional Educational Services – Other Educational Agencies		13,511.60		13,511.60
329 Professional Educational Services – Other	149,444.73	158,981.62		308,426.35
390 Other Purchased Professional and Technical Services	1,375.70	1,190.00		2,565.70
Total Purchased Professional and Technical Services	\$150,824.93	\$176,623.25		\$327,448.18
400 Purchased Property Services				
430 Repairs and Maintenance Services	8,099.56	10,119.17		18,218.73
440 Rentals	1,939.85	12,841.49		14,781.34
Total Purchased Property Services	\$10,039.41	\$22,960.66		\$33,000.07
500 Other Purchased Services				
510 Student Transportation Services	9,916.61	22,370.35		32,286.96
561 Tuition To Other School Districts Within the State		10,014.37		10,014.37
562 Tuition To Pennsylvania Charter Schools	524,192.15	432,579.15		956,771.30
568 Tuition To Private Residential Rehabilitative Institutions (PRRI) [In-State] and Detention Centers	42.54	8,464.89		8,507.43
569 Tuition – Other	392.88	78,183.12		78,576.00
580 Travel	353.10			353.10
Total Other Purchased Services	\$534,897.28	\$551,611.88		\$1,086,509.16
600 Supplies				
610 General Supplies	68,552.77	140,668.98	43,358.07	252,579.82
630 Food			112.84	112.84
640 Books and Periodicals	25,503.38	18,614.73		44,118.11
Total Supplies	\$94,056.15	\$159,283.71	\$43,470.91	\$296,810.77
700 Property				
752 Capital Equipment – Original and Additional	2,911.26	7,997.33		10,908.59
758 Capitalized Technology Software - Original	4,212.60	98,192.51		102,405.11
Total Property	\$7,123.86	\$106,189.84		\$113,313.70
Total 1100 Regular Programs – Elementary / Secondary	\$5,978,004.55	\$7,136,919.79	\$263,552.53	\$13,378,476.87

LEA : 114064003 Kutztown Area SD

Printed 11/15/2019 10:49:58 AM

General Fund (10)

1110 Regular Programs

	Elementary	Secondary	Federal	Total
100 <u>Personnel Services – Salaries</u>				
100 Personnel Services – Salaries	3,226,382.90	3,883,681.77		7,110,064.67
Total Personnel Services – Salaries	\$3,226,382.90	\$3,883,681.77		\$7,110,064.67
200 <u>Personnel Services – Employee Benefits</u>				
210 Group Insurance – Contracted Provider	600,913.20	601,251.88		1,202,165.08
220 Social Security Contributions	237,524.42	288,174.10		525,698.52
230 PSERS Retirement Contributions	1,056,948.63	1,281,380.80		2,338,329.43
250 Unemployment Compensation	4.82	13,921.73		13,926.55
260 Workers' Compensation	17,002.25	20,683.97		37,686.22
299 All Other Employee Benefits	42,286.70	31,156.20		73,442.90
Total Personnel Services – Employee Benefits	\$1,954,680.02	\$2,236,568.68		\$4,191,248.70
300 <u>Purchased Professional and Technical Services</u>				
322 Professional Educational Services – Ius	4.50	2,940.03		2,944.53
323 Professional Educational Services – Other Educational Agencies		13,511.60		13,511.60
329 Professional Educational Services – Other	149,444.73	158,981.62		308,426.35
390 Other Purchased Professional and Technical Services	1,375.70	1,190.00		2,565.70
Total Purchased Professional and Technical Services	\$150,824.93	\$176,623.25		\$327,448.18
400 <u>Purchased Property Services</u>				
430 Repairs and Maintenance Services	8,099.56	10,119.17		18,218.73
440 Rentals	1,939.85	12,841.49		14,781.34
Total Purchased Property Services	\$10,039.41	\$22,960.66		\$33,000.07
500 <u>Other Purchased Services</u>				
510 Student Transportation Services	9,916.61	22,370.35		32,286.96
561 Tuition To Other School Districts Within the State		10,014.37		10,014.37
562 Tuition To Pennsylvania Charter Schools	524,192.15	432,579.15		956,771.30
568 Tuition To Private Residential Rehabilitative Institutions (PRRI) [In-State] and Detention Centers	42.54	8,464.89		8,507.43
569 Tuition – Other	392.88	78,183.12		78,576.00
580 Travel	353.10			353.10
Total Other Purchased Services	\$534,897.28	\$551,611.88		\$1,086,509.16
600 <u>Supplies</u>				
610 General Supplies	68,552.77	140,668.98		209,221.75
640 Books and Periodicals	25,503.38	18,614.73		44,118.11
Total Supplies	\$94,056.15	\$159,283.71		\$253,339.86
700 <u>Property</u>				
752 Capital Equipment – Original and Additional	2,911.26	7,997.33		10,908.59
758 Capitalized Technology Software - Original	4,212.60	98,192.51		102,405.11
Total Property	\$7,123.86	\$106,189.84		\$113,313.70
Total 1110 Regular Programs	\$5,978,004.55	\$7,136,919.79		\$13,114,924.34

LEA : 114064003 Kutztown Area SD

Printed 11/15/2019 10:49:58 AM

General Fund (10)					
1190 Federally-Funded Regular Programs		Elementary	Secondary	Federal	Total
100 Personnel Services – Salaries					
100 Personnel Services – Salaries				150,740.80	150,740.80
Total Personnel Services – Salaries				\$150,740.80	\$150,740.80
200 Personnel Services – Employee Benefits					
210 Group Insurance – Contracted Provider				7,114.14	7,114.14
220 Social Security Contributions				11,035.59	11,035.59
230 PSERS Retirement Contributions				50,392.64	50,392.64
260 Workers' Compensation				798.45	798.45
Total Personnel Services – Employee Benefits				\$69,340.82	\$69,340.82
600 Supplies					
610 General Supplies				43,358.07	43,358.07
630 Food				112.84	112.84
Total Supplies				\$43,470.91	\$43,470.91
Total 1190 Federally-Funded Regular Programs				\$263,552.53	\$263,552.53

LEA : 114064003 Kutztown Area SD

Printed 11/15/2019 10:49:58 AM

General Fund (10)

1200 Special Programs – Elementary / Secondary	Elementary	Secondary	Federal	Total
100 Personnel Services – Salaries				
100 Personnel Services – Salaries	907,291.91	1,087,062.62	193,290.88	2,187,645.41
Total Personnel Services – Salaries	\$907,291.91	\$1,087,062.62	\$193,290.88	\$2,187,645.41
200 Personnel Services – Employee Benefits				
210 Group Insurance – Contracted Provider	256,715.36	360,356.66		617,072.02
220 Social Security Contributions	64,887.09	77,959.64	13,808.71	156,655.44
230 PSERS Retirement Contributions	292,703.42	394,171.27	32,308.59	719,183.28
260 Workers' Compensation	4,853.66	6,706.64		11,560.30
299 All Other Employee Benefits	3,622.50	5,950.50		9,573.00
Total Personnel Services – Employee Benefits	\$622,782.03	\$845,144.71	\$46,117.30	\$1,514,044.04
300 Purchased Professional and Technical Services				
322 Professional Educational Services – lus	12,289.51	5,967.22		18,256.73
390 Other Purchased Professional and Technical Services	4,970.88	7,229.12		12,200.00
Total Purchased Professional and Technical Services	\$17,260.39	\$13,196.34		\$30,456.73
500 Other Purchased Services				
561 Tuition To Other School Districts Within the State	13,586.94	141,655.81		155,242.75
562 Tuition To Pennsylvania Charter Schools	184,895.06	300,937.83		485,832.89
563 Tuition To Nonpublic Schools	92,994.00			92,994.00
567 Tuition To Approved Private Schools (APS) and PA Chartered Schools for the Deaf and Blind		22,110.19		22,110.19
568 Tuition To Private Residential Rehabilitative Institutions (PRRI) [In-State] and Detention Centers	22,110.19			22,110.19
580 Travel	49.90	79.60		129.50
Total Other Purchased Services	\$313,636.09	\$464,783.43		\$778,419.52
600 Supplies				
610 General Supplies	7,304.14	7,309.76	4,232.00	18,845.90
640 Books and Periodicals	4,721.59	3,229.86		7,951.45
Total Supplies	\$12,025.73	\$10,539.62	\$4,232.00	\$26,797.35
700 Property				
752 Capital Equipment – Original and Additional	1,625.54	5,052.37		6,677.91
Total Property	\$1,625.54	\$5,052.37		\$6,677.91
Total 1200 Special Programs – Elementary / Secondary	\$1,874,621.69	\$2,425,779.09	\$243,640.18	\$4,544,040.96

LEA : 114064003 Kutztown Area SD

Printed 11/15/2019 10:49:58 AM

General Fund (10)				
1210 Life Skills Support	<u>Elementary</u>	<u>Secondary</u>	<u>Federal</u>	<u>Total</u>
100 <u>Personnel Services – Salaries</u>				
100 Personnel Services – Salaries	117,676.75	78,039.98	143,600.81	339,317.54
Total Personnel Services – Salaries	\$117,676.75	\$78,039.98	\$143,600.81	\$339,317.54
200 <u>Personnel Services – Employee Benefits</u>				
210 Group Insurance – Contracted Provider	48,225.94	36,126.80		84,352.74
220 Social Security Contributions	8,461.30	5,366.85	10,724.10	24,552.25
230 PSERS Retirement Contributions	39,111.53	47,179.48	24,002.87	110,293.88
260 Workers' Compensation	619.14	1,170.35		1,789.49
Total Personnel Services – Employee Benefits	\$96,417.91	\$89,843.48	\$34,726.97	\$220,988.36
500 <u>Other Purchased Services</u>				
561 Tuition To Other School Districts Within the State	2,000.00	40,007.33		42,007.33
580 Travel	0.40	79.60		80.00
Total Other Purchased Services	\$2,000.40	\$40,086.93		\$42,087.33
600 <u>Supplies</u>				
610 General Supplies	1,443.52	5,523.89		6,967.41
640 Books and Periodicals	1,153.39	1,768.70		2,922.09
Total Supplies	\$2,596.91	\$7,292.59		\$9,889.50
700 <u>Property</u>				
752 Capital Equipment – Original and Additional		578.47		578.47
Total Property		\$578.47		\$578.47
Total 1210 Life Skills Support	\$218,691.97	\$215,841.45	\$178,327.78	\$612,861.20

LEA : 114064003 Kutztown Area SD

Printed 11/15/2019 10:49:58 AM

General Fund (10)				
1220 Sensory Support	<u>Elementary</u>	<u>Secondary</u>	<u>Federal</u>	<u>Total</u>
100 <u>Personnel Services – Salaries</u>				
100 Personnel Services – Salaries	64,789.25	64,320.56		129,109.81
Total Personnel Services – Salaries	\$64,789.25	\$64,320.56		\$129,109.81
200 <u>Personnel Services – Employee Benefits</u>				
210 Group Insurance – Contracted Provider	188.05	184.85		372.90
220 Social Security Contributions	4,956.22	4,920.72		9,876.94
230 PSERS Retirement Contributions	19,636.13	19,493.67		39,129.80
260 Workers' Compensation	343.18	340.70		683.88
Total Personnel Services – Employee Benefits	\$25,123.58	\$24,939.94		\$50,063.52
300 <u>Purchased Professional and Technical Services</u>				
322 Professional Educational Services – Ius	12,289.51	5,967.22		18,256.73
390 Other Purchased Professional and Technical Services	4,970.88	7,229.12		12,200.00
Total Purchased Professional and Technical Services	\$17,260.39	\$13,196.34		\$30,456.73
600 <u>Supplies</u>				
610 General Supplies	275.59	47.18		322.77
Total Supplies	\$275.59	\$47.18		\$322.77
700 <u>Property</u>				
752 Capital Equipment – Original and Additional		4,287.96		4,287.96
Total Property		\$4,287.96		\$4,287.96
Total 1220 Sensory Support	\$107,448.81	\$106,791.98		\$214,240.79

LEA : 114064003 Kutztown Area SD

Printed 11/15/2019 10:49:58 AM

General Fund (10)				
1230 Emotional Support	<u>Elementary</u>	<u>Secondary</u>	<u>Federal</u>	<u>Total</u>
500 <u>Other Purchased Services</u>				
563 Tuition To Nonpublic Schools	92,994.00			92,994.00
Total Other Purchased Services	\$92,994.00			\$92,994.00
600 <u>Supplies</u>				
610 General Supplies	112.72	166.17		278.89
Total Supplies	\$112.72	\$166.17		\$278.89
Total 1230 Emotional Support	\$93,106.72	\$166.17		\$93,272.89

LEA : 114064003 Kutztown Area SD

Printed 11/15/2019 10:49:58 AM

General Fund (10)				
1240 Academic Support	<u>Elementary</u>	<u>Secondary</u>	<u>Federal</u>	<u>Total</u>
100 <u>Personnel Services – Salaries</u>				
100 Personnel Services – Salaries	724,825.91	944,702.08	49,690.07	1,719,218.06
Total Personnel Services – Salaries	\$724,825.91	\$944,702.08	\$49,690.07	\$1,719,218.06
200 <u>Personnel Services – Employee Benefits</u>				
210 Group Insurance – Contracted Provider	208,301.37	324,045.01		532,346.38
220 Social Security Contributions	51,469.57	67,672.07	3,084.61	122,226.25
230 PSERS Retirement Contributions	233,955.76	327,498.12	8,305.72	569,759.60
260 Workers' Compensation	3,891.34	5,195.59		9,086.93
299 All Other Employee Benefits	3,622.50	5,950.50		9,573.00
Total Personnel Services – Employee Benefits	\$501,240.54	\$730,361.29	\$11,390.33	\$1,242,992.16
500 <u>Other Purchased Services</u>				
561 Tuition To Other School Districts Within the State	11,586.94	101,648.48		113,235.42
562 Tuition To Pennsylvania Charter Schools	184,895.06	300,937.83		485,832.89
567 Tuition To Approved Private Schools (APS) and PA Chartered Schools for the Deaf and Blind		22,110.19		22,110.19
580 Travel	49.50			49.50
Total Other Purchased Services	\$196,531.50	\$424,696.50		\$621,228.00
600 <u>Supplies</u>				
610 General Supplies	5,472.31	1,572.52	4,232.00	11,276.83
640 Books and Periodicals	3,568.20	1,461.16		5,029.36
Total Supplies	\$9,040.51	\$3,033.68	\$4,232.00	\$16,306.19
700 <u>Property</u>				
752 Capital Equipment – Original and Additional	1,625.54	185.94		1,811.48
Total Property	\$1,625.54	\$185.94		\$1,811.48
Total 1240 Academic Support	\$1,433,264.00	\$2,102,979.49	\$65,312.40	\$3,601,555.89

LEA : 114064003 Kutztown Area SD

Printed 11/15/2019 10:49:58 AM

General Fund (10)

1241 Learning Support – Public	<u>Elementary</u>	<u>Secondary</u>	<u>Federal</u>	<u>Total</u>
100 <u>Personnel Services – Salaries</u>				
100 Personnel Services – Salaries	654,853.03	844,597.46	49,690.07	1,549,140.56
Total Personnel Services – Salaries	\$654,853.03	\$844,597.46	\$49,690.07	\$1,549,140.56
200 <u>Personnel Services – Employee Benefits</u>				
210 Group Insurance – Contracted Provider	195,432.62	320,213.50		515,646.12
220 Social Security Contributions	46,322.14	60,066.78	3,084.61	109,473.53
230 PSERS Retirement Contributions	210,563.84	294,033.02	8,305.72	512,902.58
260 Workers' Compensation	3,520.70	4,665.35		8,186.05
299 All Other Employee Benefits	2,850.00	3,633.00		6,483.00
Total Personnel Services – Employee Benefits	\$458,689.30	\$682,611.65	\$11,390.33	\$1,152,691.28
500 <u>Other Purchased Services</u>				
561 Tuition To Other School Districts Within the State	11,586.94	101,648.48		113,235.42
562 Tuition To Pennsylvania Charter Schools	184,895.06	300,937.83		485,832.89
567 Tuition To Approved Private Schools (APS) and PA Chartered Schools for the Deaf and Blind		22,110.19		22,110.19
580 Travel	49.50			49.50
Total Other Purchased Services	\$196,531.50	\$424,696.50		\$621,228.00
600 <u>Supplies</u>				
610 General Supplies	5,217.23	632.50	4,232.00	10,081.73
640 Books and Periodicals	3,568.20	1,461.16		5,029.36
Total Supplies	\$8,785.43	\$2,093.66	\$4,232.00	\$15,111.09
700 <u>Property</u>				
752 Capital Equipment – Original and Additional	311.60	35.99		347.59
Total Property	\$311.60	\$35.99		\$347.59
Total 1241 Learning Support – Public	\$1,319,170.86	\$1,954,035.26	\$65,312.40	\$3,338,518.52

LEA : 114064003 Kutztown Area SD

Printed 11/15/2019 10:49:58 AM

General Fund (10)

1243 Gifted Support

	<u>Elementary</u>	<u>Secondary</u>	<u>Federal</u>	<u>Total</u>
100 <u>Personnel Services – Salaries</u>				
100 Personnel Services – Salaries	69,972.88	100,104.62		170,077.50
Total Personnel Services – Salaries	\$69,972.88	\$100,104.62		\$170,077.50
200 <u>Personnel Services – Employee Benefits</u>				
210 Group Insurance – Contracted Provider	12,868.75	3,831.51		16,700.26
220 Social Security Contributions	5,147.43	7,605.29		12,752.72
230 PSERS Retirement Contributions	23,391.92	33,465.10		56,857.02
260 Workers' Compensation	370.64	530.24		900.88
299 All Other Employee Benefits	772.50	2,317.50		3,090.00
Total Personnel Services – Employee Benefits	\$42,551.24	\$47,749.64		\$90,300.88
600 <u>Supplies</u>				
610 General Supplies	255.08	940.02		1,195.10
Total Supplies	\$255.08	\$940.02		\$1,195.10
700 <u>Property</u>				
752 Capital Equipment – Original and Additional	1,313.94	149.95		1,463.89
Total Property	\$1,313.94	\$149.95		\$1,463.89
Total 1243 Gifted Support	\$114,093.14	\$148,944.23		\$263,037.37

LEA : 114064003 Kutztown Area SD

Printed 11/15/2019 10:49:58 AM

General Fund (10)

1290 Special Programs - Other Support	<u>Elementary</u>	<u>Secondary</u>	<u>Federal</u>	<u>Total</u>
500 <u>Other Purchased Services</u>				
568 Tuition To Private Residential Rehabilitative Institutions (PRRI) [In-State] and Detention Centers	22,110.19			22,110.19
Total Other Purchased Services	\$22,110.19			\$22,110.19
Total 1290 Special Programs - Other Support	\$22,110.19			\$22,110.19

LEA : 114064003 Kutztown Area SD

Printed 11/15/2019 10:49:58 AM

General Fund (10)

1300 Vocational Education

	<u>Elementary</u>	<u>Secondary</u>	<u>Federal</u>	<u>Total</u>
100 <u>Personnel Services – Salaries</u>				
100 Personnel Services – Salaries		299,326.66		299,326.66
Total Personnel Services – Salaries		\$299,326.66		\$299,326.66
200 <u>Personnel Services – Employee Benefits</u>				
210 Group Insurance – Contracted Provider		52,693.39		52,693.39
220 Social Security Contributions		21,984.09		21,984.09
230 PSERS Retirement Contributions		94,227.02		94,227.02
260 Workers' Compensation		1,559.01		1,559.01
Total Personnel Services – Employee Benefits		\$170,463.51		\$170,463.51
500 <u>Other Purchased Services</u>				
564 Tuition To Career and Technology Centers		561,694.18		561,694.18
Total Other Purchased Services		\$561,694.18		\$561,694.18
600 <u>Supplies</u>				
610 General Supplies		8,291.28		8,291.28
Total Supplies		\$8,291.28		\$8,291.28
Total 1300 Vocational Education		\$1,039,775.63		\$1,039,775.63

LEA : 114064003 Kutztown Area SD

Printed 11/15/2019 10:49:58 AM

General Fund (10)

1400 Other Instructional Programs – Elementary / Secondary	<u>Elementary</u>	<u>Secondary</u>	<u>Federal</u>	<u>Total</u>
100 <u>Personnel Services – Salaries</u>				
100 Personnel Services – Salaries	14,089.89	104,022.61		118,112.50
Total Personnel Services – Salaries	\$14,089.89	\$104,022.61		\$118,112.50
200 <u>Personnel Services – Employee Benefits</u>				
210 Group Insurance – Contracted Provider		15,646.96		15,646.96
220 Social Security Contributions	1,077.88	7,737.21		8,815.09
230 PSERS Retirement Contributions	4,707.99	33,130.31		37,838.30
260 Workers' Compensation	71.33	508.38		579.71
Total Personnel Services – Employee Benefits	\$5,857.20	\$57,022.86		\$62,880.06
500 <u>Other Purchased Services</u>				
561 Tuition To Other School Districts Within the State		1,638.74		1,638.74
Total Other Purchased Services		\$1,638.74		\$1,638.74
Total 1400 Other Instructional Programs – Elementary / Secondary	\$19,947.09	\$162,684.21		\$182,631.30

LEA : 114064003 Kutztown Area SD

Printed 11/15/2019 10:49:58 AM

General Fund (10)

1420 Summer School	<u>Elementary</u>	<u>Secondary</u>	<u>Federal</u>	<u>Total</u>
100 <u>Personnel Services – Salaries</u>				
100 Personnel Services – Salaries	14,089.89	8,044.11		22,134.00
Total Personnel Services – Salaries	\$14,089.89	\$8,044.11		\$22,134.00
200 <u>Personnel Services – Employee Benefits</u>				
220 Social Security Contributions	1,077.88	615.37		1,693.25
230 PSERS Retirement Contributions	4,707.99	2,235.63		6,943.62
260 Workers’ Compensation	71.33			71.33
Total Personnel Services – Employee Benefits	\$5,857.20	\$2,851.00		\$8,708.20
Total 1420 Summer School	\$19,947.09	\$10,895.11		\$30,842.20

LEA : 114064003 Kutztown Area SD

Printed 11/15/2019 10:49:58 AM

General Fund (10)

1440 Alternative Regular Education Programs	<u>Elementary</u>	<u>Secondary</u>	<u>Federal</u>	<u>Total</u>
100 <u>Personnel Services – Salaries</u>				
100 Personnel Services – Salaries		95,978.50		95,978.50
Total Personnel Services – Salaries		\$95,978.50		\$95,978.50
200 <u>Personnel Services – Employee Benefits</u>				
210 Group Insurance – Contracted Provider		15,646.96		15,646.96
220 Social Security Contributions		7,121.84		7,121.84
230 PSERS Retirement Contributions		30,894.68		30,894.68
260 Workers' Compensation		508.38		508.38
Total Personnel Services – Employee Benefits		\$54,171.86		\$54,171.86
500 <u>Other Purchased Services</u>				
561 Tuition To Other School Districts Within the State		1,638.74		1,638.74
Total Other Purchased Services		\$1,638.74		\$1,638.74
Total 1440 Alternative Regular Education Programs		\$151,789.10		\$151,789.10

LEA : 114064003 Kutztown Area SD

Printed 11/15/2019 10:49:58 AM

General Fund (10)

1441 Adjudicated / Court-Placed Programs

Elementary Secondary Federal Total

500 Other Purchased Services

561 Tuition To Other School Districts Within the State 1,638.74 1,638.74

Total Other Purchased Services \$1,638.74 \$1,638.74

Total 1441 Adjudicated / Court-Placed Programs \$1,638.74 \$1,638.74

LEA : 114064003 Kutztown Area SD

Printed 11/15/2019 10:49:58 AM

General Fund (10)

1442 Alternative Education Programs	<u>Elementary</u>	<u>Secondary</u>	<u>Federal</u>	<u>Total</u>
100 <u>Personnel Services – Salaries</u>				
100 Personnel Services – Salaries		95,978.50		95,978.50
Total Personnel Services – Salaries		\$95,978.50		\$95,978.50
200 <u>Personnel Services – Employee Benefits</u>				
210 Group Insurance – Contracted Provider		15,646.96		15,646.96
220 Social Security Contributions		7,121.84		7,121.84
230 PSERS Retirement Contributions		30,894.68		30,894.68
260 Workers' Compensation		508.38		508.38
Total Personnel Services – Employee Benefits		\$54,171.86		\$54,171.86
Total 1442 Alternative Education Programs		\$150,150.36		\$150,150.36

LEA : 114064003 Kutztown Area SD

Printed 11/15/2019 10:49:58 AM

General Fund (10)

1600 Adult Education Programs	<u>Elementary</u>	<u>Secondary</u>	<u>Federal</u>	<u>Total</u>
300 <u>Purchased Professional and Technical Services</u>				
329 Professional Educational Services – Other				4,604.19
Total Purchased Professional and Technical Services				\$4,604.19
Total 1600 Adult Education Programs				\$4,604.19

LEA : 114064003 Kutztown Area SD

Printed 11/15/2019 10:50:10 AM

General Fund (10)

2000 Support Services	Total
100 Personnel Services – Salaries	
100 Personnel Services – Salaries	3,785,204.57
Total Personnel Services – Salaries	\$3,785,204.57
200 Personnel Services – Employee Benefits	
210 Group Insurance – Contracted Provider	1,074,309.24
220 Social Security Contributions	277,266.24
230 PSERS Retirement Contributions	1,221,854.17
260 Workers' Compensation	19,861.61
299 All Other Employee Benefits	46,606.82
Total Personnel Services – Employee Benefits	\$2,639,898.08
300 Purchased Professional and Technical Services	
310 Official / Administrative Services	34,998.92
323 Professional Educational Services – Other Educational Agencies	2,964.21
329 Professional Educational Services – Other	87,112.73
330 Other Professional Services	215,424.62
340 Technical Services	137,749.56
350 Security / Safety Services	9,437.00
390 Other Purchased Professional and Technical Services	50,295.32
Total Purchased Professional and Technical Services	\$537,982.36
400 Purchased Property Services	
410 Cleaning Services	170,675.74
420 Utility Services	50,684.58
430 Repairs and Maintenance Services	325,321.96
440 Rentals	4,641.20
Total Purchased Property Services	\$551,323.48
500 Other Purchased Services	
513 Contracted Carriers	963,507.28
519 Student Transportation Services From Other Sources	231,485.02
520 Insurance – General	3,243.25
521 Fire Insurance	76,572.00
522 Automotive Liability Insurance	12,456.50
523 General Property and Liability Insurance	16,681.29
530 Communications	73,076.84
549 Other Advertising/Public Relations	3,015.38
580 Travel	35,475.41
595 IU Payments By Withholding	26,981.61
599 Other Miscellaneous Purchased Services	27,614.09
Total Other Purchased Services	\$1,470,108.67
600 Supplies	
610 General Supplies	304,814.64
620 Energy	614,780.39
630 Food	8,568.14
640 Books and Periodicals	67,006.24

LEA : 114064003 Kutztown Area SD

Printed 11/15/2019 10:50:10 AM

General Fund (10)

2000 Support Services

	<u>Total</u>
Total Supplies	\$995,169.41
700 <u>Property</u>	
752 Capital Equipment – Original and Additional	1,788.65
758 Capitalized Technology Software - Original	61,841.57
762 Capitalized Equipment - Replacement	37,797.77
Total Property	\$101,427.99
800 <u>Other Objects</u>	
810 Dues and Fees	29,442.19
Total Other Objects	\$29,442.19
Total 2000 Support Services	\$10,110,556.75

LEA : 114064003 Kutztown Area SD

Printed 11/15/2019 10:50:10 AM

General Fund (10)				
2100 Support Services – Students	<u>Elementary</u>	<u>Secondary</u>	<u>Federal</u>	<u>Total</u>
100 <u>Personnel Services – Salaries</u>				
100 Personnel Services – Salaries	222,354.84	443,869.60		666,224.44
Total Personnel Services – Salaries	\$222,354.84	\$443,869.60		\$666,224.44
200 <u>Personnel Services – Employee Benefits</u>				
210 Group Insurance – Contracted Provider	43,449.82	62,022.46		105,472.28
220 Social Security Contributions	16,326.11	33,236.29		49,562.40
230 PSERS Retirement Contributions	72,908.18	144,173.98		217,082.16
260 Workers' Compensation	1,175.72	2,340.91		3,516.63
299 All Other Employee Benefits	2,985.50	10,818.28		13,803.78
Total Personnel Services – Employee Benefits	\$136,845.33	\$252,591.92		\$389,437.25
300 <u>Purchased Professional and Technical Services</u>				
330 Other Professional Services	21.35	7,748.25		7,769.60
Total Purchased Professional and Technical Services	\$21.35	\$7,748.25		\$7,769.60
500 <u>Other Purchased Services</u>				
580 Travel	3.26	799.08		802.34
Total Other Purchased Services	\$3.26	\$799.08		\$802.34
600 <u>Supplies</u>				
610 General Supplies	1,288.51	2,356.98		3,645.49
Total Supplies	\$1,288.51	\$2,356.98		\$3,645.49
Total 2100 Support Services – Students	\$360,513.29	\$707,365.83		\$1,067,879.12

LEA : 114064003 Kutztown Area SD

Printed 11/15/2019 10:50:10 AM

General Fund (10)				
2120 Guidance Services	<u>Elementary</u>	<u>Secondary</u>	<u>Federal</u>	<u>Total</u>
100 <u>Personnel Services – Salaries</u>				
100 Personnel Services – Salaries	180,601.77	297,135.97		477,737.74
Total Personnel Services – Salaries	\$180,601.77	\$297,135.97		\$477,737.74
200 <u>Personnel Services – Employee Benefits</u>				
210 Group Insurance – Contracted Provider	43,320.17	61,893.37		105,213.54
220 Social Security Contributions	13,132.04	22,214.06		35,346.10
230 PSERS Retirement Contributions	60,375.26	99,387.58		159,762.84
260 Workers' Compensation	956.57	1,566.03		2,522.60
299 All Other Employee Benefits		7,032.78		7,032.78
Total Personnel Services – Employee Benefits	\$117,784.04	\$192,093.82		\$309,877.86
500 <u>Other Purchased Services</u>				
580 Travel		150.92		150.92
Total Other Purchased Services		\$150.92		\$150.92
600 <u>Supplies</u>				
610 General Supplies	1,276.67			1,276.67
Total Supplies	\$1,276.67			\$1,276.67
Total 2120 Guidance Services	\$299,662.48	\$489,380.71		\$789,043.19

LEA : 114064003 Kutztown Area SD

Printed 11/15/2019 10:50:10 AM

General Fund (10)

2140 Psychological Services	Elementary	Secondary	Federal	Total
100 <u>Personnel Services – Salaries</u>				
100 Personnel Services – Salaries	41,753.07	48,082.69		89,835.76
Total Personnel Services – Salaries	\$41,753.07	\$48,082.69		\$89,835.76
200 <u>Personnel Services – Employee Benefits</u>				
210 Group Insurance – Contracted Provider	129.65	129.09		258.74
220 Social Security Contributions	3,194.07	3,678.29		6,872.36
230 PSERS Retirement Contributions	12,532.92	14,653.26		27,186.18
260 Workers' Compensation	219.15	252.34		471.49
299 All Other Employee Benefits	2,985.50	2,985.50		5,971.00
Total Personnel Services – Employee Benefits	\$19,061.29	\$21,698.48		\$40,759.77
300 <u>Purchased Professional and Technical Services</u>				
330 Other Professional Services	21.35	7,748.25		7,769.60
Total Purchased Professional and Technical Services	\$21.35	\$7,748.25		\$7,769.60
500 <u>Other Purchased Services</u>				
580 Travel	3.26	648.16		651.42
Total Other Purchased Services	\$3.26	\$648.16		\$651.42
600 <u>Supplies</u>				
610 General Supplies	11.84	2,356.98		2,368.82
Total Supplies	\$11.84	\$2,356.98		\$2,368.82
Total 2140 Psychological Services	\$60,850.81	\$80,534.56		\$141,385.37

LEA : 114064003 Kutztown Area SD

Printed 11/15/2019 10:50:10 AM

General Fund (10)

2190 Other Student Services

	<u>Elementary</u>	<u>Secondary</u>	<u>Federal</u>	<u>Total</u>
100 <u>Personnel Services – Salaries</u>				
100 Personnel Services – Salaries		98,650.94		98,650.94
Total Personnel Services – Salaries		\$98,650.94		\$98,650.94
200 <u>Personnel Services – Employee Benefits</u>				
220 Social Security Contributions		7,343.94		7,343.94
230 PSERS Retirement Contributions		30,133.14		30,133.14
260 Workers’ Compensation		522.54		522.54
299 All Other Employee Benefits		800.00		800.00
Total Personnel Services – Employee Benefits		\$38,799.62		\$38,799.62
Total 2190 Other Student Services		\$137,450.56		\$137,450.56

LEA : 114064003 Kutztown Area SD

Printed 11/15/2019 10:50:10 AM

General Fund (10)

2200 Support Services – Instructional Staff	Elementary	Secondary	Federal	Total
100 Personnel Services – Salaries				
100 Personnel Services – Salaries	86,615.21	619,626.70		706,241.91
Total Personnel Services – Salaries	\$86,615.21	\$619,626.70		\$706,241.91
200 Personnel Services – Employee Benefits				
210 Group Insurance – Contracted Provider	23,711.30	125,456.22		149,167.52
220 Social Security Contributions	6,210.35	46,227.91		52,438.26
230 PSERS Retirement Contributions	28,950.74	202,113.81		231,064.55
260 Workers' Compensation	423.85	3,316.40		3,740.25
299 All Other Employee Benefits	1,607.89	1,607.89		3,215.78
Total Personnel Services – Employee Benefits	\$60,904.13	\$378,722.23		\$439,626.36
300 Purchased Professional and Technical Services				
323 Professional Educational Services – Other Educational Agencies	426.71	2,487.50	50.00	2,964.21
329 Professional Educational Services – Other	64.55	12,845.24	74,202.94	87,112.73
340 Technical Services	11,441.60	39,500.00		50,941.60
390 Other Purchased Professional and Technical Services	233.29	46,424.91		46,658.20
Total Purchased Professional and Technical Services	\$12,166.15	\$101,257.65	\$74,252.94	\$187,676.74
400 Purchased Property Services				
430 Repairs and Maintenance Services	23.69	4,713.57		4,737.26
Total Purchased Property Services	\$23.69	\$4,713.57		\$4,737.26
500 Other Purchased Services				
530 Communications	82.71	16,458.42		16,541.13
580 Travel	89.14	17,738.69		17,827.83
Total Other Purchased Services	\$171.85	\$34,197.11		\$34,368.96
600 Supplies				
610 General Supplies	1,673.82	148,757.68		150,431.50
630 Food	5.86	1,167.42		1,173.28
640 Books and Periodicals	8,555.82	58,319.58		66,875.40
Total Supplies	\$10,235.50	\$208,244.68		\$218,480.18
700 Property				
752 Capital Equipment – Original and Additional	53.97	1.80		55.77
758 Capitalized Technology Software - Original	309.21	61,532.36		61,841.57
Total Property	\$363.18	\$61,534.16		\$61,897.34
800 Other Objects				
810 Dues and Fees	14.18	2,821.82		2,836.00
Total Other Objects	\$14.18	\$2,821.82		\$2,836.00
Total 2200 Support Services – Instructional Staff	\$170,493.89	\$1,411,117.92	\$74,252.94	\$1,655,864.75

LEA : 114064003 Kutztown Area SD

Printed 11/15/2019 10:50:10 AM

General Fund (10)

2240 Computer-Assisted Instruction Support Services	Elementary	Secondary	Federal	Total
100 <u>Personnel Services – Salaries</u>				
100 Personnel Services – Salaries	542.23	278,359.91		278,902.14
Total Personnel Services – Salaries	\$542.23	\$278,359.91		\$278,902.14
200 <u>Personnel Services – Employee Benefits</u>				
210 Group Insurance – Contracted Provider	256.42	51,025.38		51,281.80
220 Social Security Contributions	40.96	20,847.31		20,888.27
230 PSERS Retirement Contributions	176.39	88,028.44		88,204.83
260 Workers' Compensation	7.42	1,476.04		1,483.46
299 All Other Employee Benefits	1,332.89	1,332.89		2,665.78
Total Personnel Services – Employee Benefits	\$1,814.08	\$162,710.06		\$164,524.14
300 <u>Purchased Professional and Technical Services</u>				
329 Professional Educational Services – Other	64.55	12,845.24		12,909.79
340 Technical Services		39,500.00		39,500.00
Total Purchased Professional and Technical Services	\$64.55	\$52,345.24		\$52,409.79
400 <u>Purchased Property Services</u>				
430 Repairs and Maintenance Services	23.69	4,713.57		4,737.26
Total Purchased Property Services	\$23.69	\$4,713.57		\$4,737.26
500 <u>Other Purchased Services</u>				
530 Communications	82.71	16,458.42		16,541.13
580 Travel	17.87	3,555.34		3,573.21
Total Other Purchased Services	\$100.58	\$20,013.76		\$20,114.34
600 <u>Supplies</u>				
610 General Supplies	429.59	85,488.70		85,918.29
630 Food	1.60	319.11		320.71
Total Supplies	\$431.19	\$85,807.81		\$86,239.00
700 <u>Property</u>				
758 Capitalized Technology Software - Original	309.21	61,532.36		61,841.57
Total Property	\$309.21	\$61,532.36		\$61,841.57
800 <u>Other Objects</u>				
810 Dues and Fees	1.52	303.48		305.00
Total Other Objects	\$1.52	\$303.48		\$305.00
Total 2240 Computer-Assisted Instruction Support Services	\$3,287.05	\$665,786.19		\$669,073.24

LEA : 114064003 Kutztown Area SD

Printed 11/15/2019 10:50:10 AM

General Fund (10)				
2250 School Library Services				
	<u>Elementary</u>	<u>Secondary</u>	<u>Federal</u>	<u>Total</u>
100 <u>Personnel Services – Salaries</u>				
100 Personnel Services – Salaries	78,460.85	181,790.21		260,251.06
Total Personnel Services – Salaries	\$78,460.85	\$181,790.21		\$260,251.06
200 <u>Personnel Services – Employee Benefits</u>				
210 Group Insurance – Contracted Provider	23,159.91	15,734.03		38,893.94
220 Social Security Contributions	5,610.33	13,732.73		19,343.06
230 PSERS Retirement Contributions	26,229.64	60,772.39		87,002.03
260 Workers' Compensation	412.02	962.91		1,374.93
Total Personnel Services – Employee Benefits	\$55,411.90	\$91,202.06		\$146,613.96
600 <u>Supplies</u>				
610 General Supplies	937.86	2,075.78		3,013.64
640 Books and Periodicals	8,387.24	35,578.42		43,965.66
Total Supplies	\$9,325.10	\$37,654.20		\$46,979.30
Total 2250 School Library Services	\$143,197.85	\$310,646.47		\$453,844.32

LEA : 114064003 Kutztown Area SD

Printed 11/15/2019 10:50:10 AM

General Fund (10)

2260 Instruction and Curriculum Development Services	<u>Elementary</u>	<u>Secondary</u>	<u>Federal</u>	<u>Total</u>
100 <u>Personnel Services – Salaries</u>				
100 Personnel Services – Salaries	7,612.13	159,476.58		167,088.71
Total Personnel Services – Salaries	\$7,612.13	\$159,476.58		\$167,088.71
200 <u>Personnel Services – Employee Benefits</u>				
210 Group Insurance – Contracted Provider	294.97	58,696.81		58,991.78
220 Social Security Contributions	559.06	11,647.87		12,206.93
230 PSERS Retirement Contributions	2,544.71	53,312.98		55,857.69
260 Workers' Compensation	4.41	877.45		881.86
299 All Other Employee Benefits	275.00	275.00		550.00
Total Personnel Services – Employee Benefits	\$3,678.15	\$124,810.11		\$128,488.26
300 <u>Purchased Professional and Technical Services</u>				
323 Professional Educational Services – Other Educational Agencies	426.71	2,487.50	50.00	2,964.21
340 Technical Services	11,441.60			11,441.60
390 Other Purchased Professional and Technical Services	233.29	46,424.91		46,658.20
Total Purchased Professional and Technical Services	\$12,101.60	\$48,912.41	\$50.00	\$61,064.01
500 <u>Other Purchased Services</u>				
580 Travel	23.81	4,738.10		4,761.91
Total Other Purchased Services	\$23.81	\$4,738.10		\$4,761.91
600 <u>Supplies</u>				
610 General Supplies	303.26	60,574.92		60,878.18
630 Food	3.07	611.48		614.55
640 Books and Periodicals	168.21	22,667.35		22,835.56
Total Supplies	\$474.54	\$83,853.75		\$84,328.29
700 <u>Property</u>				
752 Capital Equipment – Original and Additional	53.97	1.80		55.77
Total Property	\$53.97	\$1.80		\$55.77
800 <u>Other Objects</u>				
810 Dues and Fees	12.66	2,518.34		2,531.00
Total Other Objects	\$12.66	\$2,518.34		\$2,531.00
Total 2260 Instruction and Curriculum Development Services	\$23,956.86	\$424,311.09	\$50.00	\$448,317.95

LEA : 114064003 Kutztown Area SD

Printed 11/15/2019 10:50:10 AM

General Fund (10)				
2270 Instructional Staff Professional Development Services	<u>Elementary</u>	<u>Secondary</u>	<u>Federal</u>	<u>Total</u>
300 <u>Purchased Professional and Technical Services</u>				
329 Professional Educational Services – Other			74,202.94	74,202.94
Total Purchased Professional and Technical Services			\$74,202.94	\$74,202.94
500 <u>Other Purchased Services</u>				
580 Travel	47.46	9,445.25		9,492.71
Total Other Purchased Services	\$47.46	\$9,445.25		\$9,492.71
600 <u>Supplies</u>				
610 General Supplies	3.11	618.28		621.39
630 Food	1.19	236.83		238.02
640 Books and Periodicals	0.37	73.81		74.18
Total Supplies	\$4.67	\$928.92		\$933.59
Total 2270 Instructional Staff Professional Development Services	\$52.13	\$10,374.17	\$74,202.94	\$84,629.24

LEA : 114064003 Kutztown Area SD

Printed 11/15/2019 10:50:10 AM

General Fund (10)

2300 Support Services – Administration	Elementary	Secondary	Federal	Total
100 Personnel Services – Salaries				
100 Personnel Services – Salaries	298,186.78	458,133.61		1,160,459.63
Total Personnel Services – Salaries	\$298,186.78	\$458,133.61		\$1,160,459.63
200 Personnel Services – Employee Benefits				
210 Group Insurance – Contracted Provider	93,023.69	102,098.65		279,064.05
220 Social Security Contributions	19,846.47	34,936.16		82,261.84
230 PSERS Retirement Contributions	89,832.41	152,851.06		366,505.37
260 Workers' Compensation	1,451.91	2,426.03		6,002.52
299 All Other Employee Benefits	1,981.09	15,794.17		18,504.79
Total Personnel Services – Employee Benefits	\$206,135.57	\$308,106.07		\$752,338.57
300 Purchased Professional and Technical Services				
310 Official / Administrative Services				34,998.92
330 Other Professional Services				58,328.50
340 Technical Services	0.22	44.77		6,613.05
390 Other Purchased Professional and Technical Services				2,026.85
Total Purchased Professional and Technical Services	\$0.22	\$44.77		\$101,967.32
400 Purchased Property Services				
430 Repairs and Maintenance Services				1,045.26
Total Purchased Property Services				\$1,045.26
500 Other Purchased Services				
520 Insurance – General				3,243.25
530 Communications	26,090.25			26,090.25
549 Other Advertising/Public Relations				3,015.38
580 Travel	1,152.98	693.43		12,247.19
599 Other Miscellaneous Purchased Services	1,780.69	1,456.46		3,237.15
Total Other Purchased Services	\$29,023.92	\$2,149.89		\$47,833.22
600 Supplies				
610 General Supplies	1,578.80	3,780.80		23,625.16
630 Food	860.54	4,710.15		7,361.26
640 Books and Periodicals				130.84
Total Supplies	\$2,439.34	\$8,490.95		\$31,117.26
700 Property				
752 Capital Equipment – Original and Additional	236.34			494.89
Total Property	\$236.34			\$494.89
800 Other Objects				
810 Dues and Fees	962.96	909.80		25,626.57
Total Other Objects	\$962.96	\$909.80		\$25,626.57
Total 2300 Support Services – Administration	\$536,985.13	\$777,835.09		\$2,120,882.72

LEA : 114064003 Kutztown Area SD

Printed 11/15/2019 10:50:10 AM

General Fund (10)

2310 Board Services

	<u>Elementary</u>	<u>Secondary</u>	<u>Federal</u>	<u>Total</u>
100 <u>Personnel Services – Salaries</u>				
100 Personnel Services – Salaries				2,500.00
Total Personnel Services – Salaries				\$2,500.00
200 <u>Personnel Services – Employee Benefits</u>				
220 Social Security Contributions				190.09
230 PSERS Retirement Contributions				835.76
260 Workers’ Compensation				13.24
Total Personnel Services – Employee Benefits				\$1,039.09
300 <u>Purchased Professional and Technical Services</u>				
330 Other Professional Services				26,950.00
390 Other Purchased Professional and Technical Services				2,026.85
Total Purchased Professional and Technical Services				\$28,976.85
500 <u>Other Purchased Services</u>				
520 Insurance – General				250.00
549 Other Advertising/Public Relations				3,015.38
580 Travel				3,805.88
Total Other Purchased Services				\$7,071.26
600 <u>Supplies</u>				
610 General Supplies				577.58
630 Food				32.77
Total Supplies				\$610.35
800 <u>Other Objects</u>				
810 Dues and Fees				13,929.81
Total Other Objects				\$13,929.81
Total 2310 Board Services				\$54,127.36

LEA : 114064003 Kutztown Area SD

Printed 11/15/2019 10:50:10 AM

General Fund (10)

2320 Board Treasurer Services	<u>Elementary</u>	<u>Secondary</u>	<u>Federal</u>	<u>Total</u>
100 <u>Personnel Services – Salaries</u>				
100 Personnel Services – Salaries				1,050.00
Total Personnel Services – Salaries				\$1,050.00
200 <u>Personnel Services – Employee Benefits</u>				
220 Social Security Contributions				77.18
230 PSERS Retirement Contributions				351.02
260 Workers’ Compensation				5.56
Total Personnel Services – Employee Benefits				\$433.76
500 <u>Other Purchased Services</u>				
520 Insurance – General				250.00
Total Other Purchased Services				\$250.00
Total 2320 Board Treasurer Services				\$1,733.76

LEA : 114064003 Kutztown Area SD

Printed 11/15/2019 10:50:10 AM

General Fund (10)				
2330 Tax Assessment and Collection Services	<u>Elementary</u>	<u>Secondary</u>	<u>Federal</u>	<u>Total</u>
100 <u>Personnel Services – Salaries</u>				
100 Personnel Services – Salaries				22,933.75
Total Personnel Services – Salaries				\$22,933.75
200 <u>Personnel Services – Employee Benefits</u>				
220 Social Security Contributions				1,754.37
260 Workers’ Compensation				120.99
Total Personnel Services – Employee Benefits				\$1,875.36
300 <u>Purchased Professional and Technical Services</u>				
310 Official / Administrative Services				34,998.92
Total Purchased Professional and Technical Services				\$34,998.92
500 <u>Other Purchased Services</u>				
520 Insurance – General				2,743.25
Total Other Purchased Services				\$2,743.25
600 <u>Supplies</u>				
610 General Supplies				12,690.61
Total Supplies				\$12,690.61
Total 2330 Tax Assessment and Collection Services				\$75,241.89

LEA : 114064003 Kutztown Area SD

Printed 11/15/2019 10:50:10 AM

General Fund (10)

2350 Legal and Accounting Services	<u>Elementary</u>	<u>Secondary</u>	<u>Federal</u>	<u>Total</u>
300 <u>Purchased Professional and Technical Services</u>				
330 Other Professional Services				31,378.50
Total Purchased Professional and Technical Services				\$31,378.50
Total 2350 Legal and Accounting Services				\$31,378.50

LEA : 114064003 Kutztown Area SD

Printed 11/15/2019 10:50:10 AM

General Fund (10)

2360 Office of the Superintendent / Executive Director Services	<u>Elementary</u>	<u>Secondary</u>	<u>Federal</u>	<u>Total</u>
100 <u>Personnel Services – Salaries</u>				
100 Personnel Services – Salaries				377,655.49
Total Personnel Services – Salaries				\$377,655.49
200 <u>Personnel Services – Employee Benefits</u>				
210 Group Insurance – Contracted Provider				83,941.71
220 Social Security Contributions				25,457.57
230 PSERS Retirement Contributions				122,635.12
260 Workers' Compensation				1,984.79
299 All Other Employee Benefits				729.53
Total Personnel Services – Employee Benefits				\$234,748.72
300 <u>Purchased Professional and Technical Services</u>				
340 Technical Services				6,568.06
Total Purchased Professional and Technical Services				\$6,568.06
400 <u>Purchased Property Services</u>				
430 Repairs and Maintenance Services				1,045.26
Total Purchased Property Services				\$1,045.26
500 <u>Other Purchased Services</u>				
530 Communications	26,090.25			26,090.25
580 Travel				6,594.90
Total Other Purchased Services	\$26,090.25			\$32,685.15
600 <u>Supplies</u>				
610 General Supplies				4,997.37
630 Food				1,757.80
640 Books and Periodicals				130.84
Total Supplies				\$6,886.01
700 <u>Property</u>				
752 Capital Equipment – Original and Additional				258.55
Total Property				\$258.55
800 <u>Other Objects</u>				
810 Dues and Fees				9,824.00
Total Other Objects				\$9,824.00
Total 2360 Office of the Superintendent / Executive Director Services	\$26,090.25			\$669,671.24

LEA : 114064003 Kutztown Area SD

Printed 11/15/2019 10:50:10 AM

General Fund (10)				
2380 Office of the Principal Services	<u>Elementary</u>	<u>Secondary</u>	<u>Federal</u>	<u>Total</u>
100 <u>Personnel Services – Salaries</u>				
100 Personnel Services – Salaries	298,186.78	458,133.61		756,320.39
Total Personnel Services – Salaries	\$298,186.78	\$458,133.61		\$756,320.39
200 <u>Personnel Services – Employee Benefits</u>				
210 Group Insurance – Contracted Provider	93,023.69	102,098.65		195,122.34
220 Social Security Contributions	19,846.47	34,936.16		54,782.63
230 PSERS Retirement Contributions	89,832.41	152,851.06		242,683.47
260 Workers' Compensation	1,451.91	2,426.03		3,877.94
299 All Other Employee Benefits	1,981.09	15,794.17		17,775.26
Total Personnel Services – Employee Benefits	\$206,135.57	\$308,106.07		\$514,241.64
300 <u>Purchased Professional and Technical Services</u>				
340 Technical Services	0.22	44.77		44.99
Total Purchased Professional and Technical Services	\$0.22	\$44.77		\$44.99
500 <u>Other Purchased Services</u>				
580 Travel	1,152.98	693.43		1,846.41
599 Other Miscellaneous Purchased Services	1,780.69	1,456.46		3,237.15
Total Other Purchased Services	\$2,933.67	\$2,149.89		\$5,083.56
600 <u>Supplies</u>				
610 General Supplies	1,578.80	3,780.80		5,359.60
630 Food	860.54	4,710.15		5,570.69
Total Supplies	\$2,439.34	\$8,490.95		\$10,930.29
700 <u>Property</u>				
752 Capital Equipment – Original and Additional	236.34			236.34
Total Property	\$236.34			\$236.34
800 <u>Other Objects</u>				
810 Dues and Fees	962.96	909.80		1,872.76
Total Other Objects	\$962.96	\$909.80		\$1,872.76
Total 2380 Office of the Principal Services	\$510,894.88	\$777,835.09		\$1,288,729.97

LEA : 114064003 Kutztown Area SD

Printed 11/15/2019 10:50:10 AM

General Fund (10)				
2400 Support Services – Pupil Health	<u>Elementary</u>	<u>Secondary</u>	<u>Federal</u>	<u>Total</u>
100 <u>Personnel Services – Salaries</u>				
100 Personnel Services – Salaries				247,441.71
Total Personnel Services – Salaries				\$247,441.71
200 <u>Personnel Services – Employee Benefits</u>				
210 Group Insurance – Contracted Provider				58,344.60
220 Social Security Contributions				17,597.61
230 PSERS Retirement Contributions				82,253.31
260 Workers' Compensation				1,307.30
Total Personnel Services – Employee Benefits				\$159,502.82
300 <u>Purchased Professional and Technical Services</u>				
330 Other Professional Services				135,366.49
Total Purchased Professional and Technical Services				\$135,366.49
500 <u>Other Purchased Services</u>				
580 Travel				65.37
Total Other Purchased Services				\$65.37
600 <u>Supplies</u>				
610 General Supplies				5,527.54
Total Supplies				\$5,527.54
Total 2400 Support Services – Pupil Health				\$547,903.93

LEA : 114064003 Kutztown Area SD

Printed 11/15/2019 10:50:10 AM

General Fund (10)

2420 Medical Services

<u>Elementary</u>	<u>Secondary</u>	<u>Federal</u>	<u>Total</u>
-------------------	------------------	----------------	--------------

300 Purchased Professional and Technical Services

330 Other Professional Services			126,729.26
---------------------------------	--	--	------------

Total Purchased Professional and Technical Services			\$126,729.26
--	--	--	---------------------

Total 2420 Medical Services			\$126,729.26
------------------------------------	--	--	---------------------

LEA : 114064003 Kutztown Area SD

Printed 11/15/2019 10:50:10 AM

General Fund (10)

2430 Dental Services

<u>Elementary</u>	<u>Secondary</u>	<u>Federal</u>	<u>Total</u>
-------------------	------------------	----------------	--------------

300 Purchased Professional and Technical Services

330 Other Professional Services			150.00
---------------------------------	--	--	--------

Total Purchased Professional and Technical Services			\$150.00
--	--	--	-----------------

Total 2430 Dental Services			\$150.00
-----------------------------------	--	--	-----------------

LEA : 114064003 Kutztown Area SD

Printed 11/15/2019 10:50:10 AM

General Fund (10)				
2440 Nursing Services				
	<u>Elementary</u>	<u>Secondary</u>	<u>Federal</u>	<u>Total</u>
100 <u>Personnel Services – Salaries</u>				
100 Personnel Services – Salaries				247,441.71
Total Personnel Services – Salaries				\$247,441.71
200 <u>Personnel Services – Employee Benefits</u>				
210 Group Insurance – Contracted Provider				58,344.60
220 Social Security Contributions				17,597.61
230 PSERS Retirement Contributions				82,253.31
260 Workers' Compensation				1,307.30
Total Personnel Services – Employee Benefits				\$159,502.82
300 <u>Purchased Professional and Technical Services</u>				
330 Other Professional Services				8,487.23
Total Purchased Professional and Technical Services				\$8,487.23
500 <u>Other Purchased Services</u>				
580 Travel				65.37
Total Other Purchased Services				\$65.37
600 <u>Supplies</u>				
610 General Supplies				5,527.54
Total Supplies				\$5,527.54
Total 2440 Nursing Services				\$421,024.67

LEA : 114064003 Kutztown Area SD

Printed 11/15/2019 10:50:10 AM

General Fund (10)				
2500 Support Services – Business	<u>Elementary</u>	<u>Secondary</u>	<u>Federal</u>	<u>Total</u>
100 <u>Personnel Services – Salaries</u>				
100 Personnel Services – Salaries				236,584.19
Total Personnel Services – Salaries				\$236,584.19
200 <u>Personnel Services – Employee Benefits</u>				
210 Group Insurance – Contracted Provider				80,582.31
220 Social Security Contributions				17,685.29
230 PSERS Retirement Contributions				76,201.71
260 Workers' Compensation				1,256.91
299 All Other Employee Benefits				2,494.25
Total Personnel Services – Employee Benefits				\$178,220.47
300 <u>Purchased Professional and Technical Services</u>				
330 Other Professional Services				13,864.03
340 Technical Services				22,668.22
Total Purchased Professional and Technical Services				\$36,532.25
400 <u>Purchased Property Services</u>				
430 Repairs and Maintenance Services				1,813.26
440 Rentals				4,641.20
Total Purchased Property Services				\$6,454.46
500 <u>Other Purchased Services</u>				
580 Travel				3,554.97
Total Other Purchased Services				\$3,554.97
600 <u>Supplies</u>				
610 General Supplies				7,808.40
Total Supplies				\$7,808.40
800 <u>Other Objects</u>				
810 Dues and Fees				388.00
Total Other Objects				\$388.00
Total 2500 Support Services – Business				\$469,542.74

LEA : 114064003 Kutztown Area SD

Printed 11/15/2019 10:50:10 AM

General Fund (10)				
2510 Fiscal Services	<u>Elementary</u>	<u>Secondary</u>	<u>Federal</u>	<u>Total</u>
100 <u>Personnel Services – Salaries</u>				
100 Personnel Services – Salaries				236,584.19
Total Personnel Services – Salaries				\$236,584.19
200 <u>Personnel Services – Employee Benefits</u>				
210 Group Insurance – Contracted Provider				80,582.31
220 Social Security Contributions				17,685.29
230 PSERS Retirement Contributions				76,201.71
260 Workers' Compensation				1,256.91
299 All Other Employee Benefits				2,494.25
Total Personnel Services – Employee Benefits				\$178,220.47
300 <u>Purchased Professional and Technical Services</u>				
330 Other Professional Services				13,864.03
340 Technical Services				22,668.22
Total Purchased Professional and Technical Services				\$36,532.25
400 <u>Purchased Property Services</u>				
430 Repairs and Maintenance Services				1,813.26
440 Rentals				4,641.20
Total Purchased Property Services				\$6,454.46
500 <u>Other Purchased Services</u>				
580 Travel				3,554.97
Total Other Purchased Services				\$3,554.97
600 <u>Supplies</u>				
610 General Supplies				7,808.40
Total Supplies				\$7,808.40
800 <u>Other Objects</u>				
810 Dues and Fees				388.00
Total Other Objects				\$388.00
Total 2510 Fiscal Services				\$469,542.74

LEA : 114064003 Kutztown Area SD

Printed 11/15/2019 10:50:10 AM

General Fund (10)

2511 Supervision of Fiscal Services - Head of Component	<u>Elementary</u>	<u>Secondary</u>	<u>Federal</u>	<u>Total</u>
100 <u>Personnel Services – Salaries</u>				
100 Personnel Services – Salaries				120,477.00
Total Personnel Services – Salaries				\$120,477.00
200 <u>Personnel Services – Employee Benefits</u>				
210 Group Insurance – Contracted Provider				21,811.71
220 Social Security Contributions				8,997.53
230 PSERS Retirement Contributions				39,060.26
Total Personnel Services – Employee Benefits				\$69,869.50
500 <u>Other Purchased Services</u>				
580 Travel				2,181.17
Total Other Purchased Services				\$2,181.17
Total 2511 Supervision of Fiscal Services - Head of Component				\$192,527.67

LEA : 114064003 Kutztown Area SD

Printed 11/15/2019 10:50:10 AM

General Fund (10)				
2515 Financial Accounting Services	<u>Elementary</u>	<u>Secondary</u>	<u>Federal</u>	<u>Total</u>
100 <u>Personnel Services – Salaries</u>				
100 Personnel Services – Salaries				116,107.19
Total Personnel Services – Salaries				\$116,107.19
200 <u>Personnel Services – Employee Benefits</u>				
210 Group Insurance – Contracted Provider				58,770.60
220 Social Security Contributions				8,687.76
230 PSERS Retirement Contributions				37,141.45
260 Workers' Compensation				1,256.91
299 All Other Employee Benefits				2,494.25
Total Personnel Services – Employee Benefits				\$108,350.97
300 <u>Purchased Professional and Technical Services</u>				
330 Other Professional Services				13,864.03
340 Technical Services				22,668.22
Total Purchased Professional and Technical Services				\$36,532.25
400 <u>Purchased Property Services</u>				
430 Repairs and Maintenance Services				1,813.26
440 Rentals				4,641.20
Total Purchased Property Services				\$6,454.46
500 <u>Other Purchased Services</u>				
580 Travel				1,373.80
Total Other Purchased Services				\$1,373.80
600 <u>Supplies</u>				
610 General Supplies				7,808.40
Total Supplies				\$7,808.40
800 <u>Other Objects</u>				
810 Dues and Fees				388.00
Total Other Objects				\$388.00
Total 2515 Financial Accounting Services				\$277,015.07

LEA : 114064003 Kutztown Area SD

Printed 11/15/2019 10:50:10 AM

General Fund (10)				
2600 Operation and Maintenance of Plant Services	<u>Elementary</u>	<u>Secondary</u>	<u>Federal</u>	<u>Total</u>
100 <u>Personnel Services – Salaries</u>				
100 Personnel Services – Salaries				649,200.12
Total Personnel Services – Salaries				\$649,200.12
200 <u>Personnel Services – Employee Benefits</u>				
210 Group Insurance – Contracted Provider				347,936.49
220 Social Security Contributions				48,917.75
230 PSERS Retirement Contributions				211,397.49
260 Workers' Compensation				3,409.38
299 All Other Employee Benefits				8,038.22
Total Personnel Services – Employee Benefits				\$619,699.33
300 <u>Purchased Professional and Technical Services</u>				
340 Technical Services				4,266.69
350 Security / Safety Services				9,437.00
Total Purchased Professional and Technical Services				\$13,703.69
400 <u>Purchased Property Services</u>				
410 Cleaning Services				170,675.74
420 Utility Services				50,684.58
430 Repairs and Maintenance Services				301,692.86
Total Purchased Property Services				\$523,053.18
500 <u>Other Purchased Services</u>				
521 Fire Insurance				76,572.00
522 Automotive Liability Insurance				12,456.50
523 General Property and Liability Insurance				16,681.29
530 Communications				30,445.46
580 Travel				47.98
Total Other Purchased Services				\$136,203.23
600 <u>Supplies</u>				
610 General Supplies	24,192.75	77,895.49		102,088.24
620 Energy				587,325.68
Total Supplies	\$24,192.75	\$77,895.49		\$689,413.92
700 <u>Property</u>				
752 Capital Equipment – Original and Additional				1,237.99
Total Property				\$1,237.99
800 <u>Other Objects</u>				
810 Dues and Fees				362.62
Total Other Objects				\$362.62
Total 2600 Operation and Maintenance of Plant Services	\$24,192.75	\$77,895.49		\$2,632,874.08

LEA : 114064003 Kutztown Area SD

Printed 11/15/2019 10:50:10 AM

General Fund (10)

2620 Operation of Buildings Services	Elementary	Secondary	Federal	Total
100 <u>Personnel Services – Salaries</u>				
100 Personnel Services – Salaries				649,200.12
Total Personnel Services – Salaries				\$649,200.12
200 <u>Personnel Services – Employee Benefits</u>				
210 Group Insurance – Contracted Provider				347,936.49
220 Social Security Contributions				48,917.75
230 PSERS Retirement Contributions				211,397.49
260 Workers' Compensation				3,409.38
299 All Other Employee Benefits				8,038.22
Total Personnel Services – Employee Benefits				\$619,699.33
300 <u>Purchased Professional and Technical Services</u>				
340 Technical Services				4,266.69
350 Security / Safety Services				9,437.00
Total Purchased Professional and Technical Services				\$13,703.69
400 <u>Purchased Property Services</u>				
410 Cleaning Services				170,675.74
420 Utility Services				50,684.58
430 Repairs and Maintenance Services				301,692.86
Total Purchased Property Services				\$523,053.18
500 <u>Other Purchased Services</u>				
521 Fire Insurance				76,572.00
522 Automotive Liability Insurance				12,456.50
523 General Property and Liability Insurance				16,681.29
530 Communications				30,445.46
580 Travel				47.98
Total Other Purchased Services				\$136,203.23
600 <u>Supplies</u>				
610 General Supplies	24,192.75	77,895.49		102,088.24
620 Energy				587,325.68
Total Supplies	\$24,192.75	\$77,895.49		\$689,413.92
700 <u>Property</u>				
752 Capital Equipment – Original and Additional				1,237.99
Total Property				\$1,237.99
800 <u>Other Objects</u>				
810 Dues and Fees				362.62
Total Other Objects				\$362.62
Total 2620 Operation of Buildings Services	\$24,192.75	\$77,895.49		\$2,632,874.08

LEA : 114064003 Kutztown Area SD

Printed 11/15/2019 10:50:10 AM

General Fund (10)				
2700 Student Transportation Services	Elementary	Secondary	Federal	Total
100 Personnel Services – Salaries				
100 Personnel Services – Salaries				101,937.74
Total Personnel Services – Salaries				\$101,937.74
200 Personnel Services – Employee Benefits				
210 Group Insurance – Contracted Provider				41,467.73
220 Social Security Contributions				7,531.65
230 PSERS Retirement Contributions				31,628.08
260 Workers' Compensation				537.97
299 All Other Employee Benefits				550.00
Total Personnel Services – Employee Benefits				\$81,715.43
300 Purchased Professional and Technical Services				
330 Other Professional Services				96.00
340 Technical Services				4,300.00
Total Purchased Professional and Technical Services				\$4,396.00
400 Purchased Property Services				
430 Repairs and Maintenance Services				16,033.32
Total Purchased Property Services				\$16,033.32
500 Other Purchased Services				
513 Contracted Carriers				963,507.28
519 Student Transportation Services From Other Sources				231,485.02
580 Travel				189.38
599 Other Miscellaneous Purchased Services				24,376.94
Total Other Purchased Services				\$1,219,558.62
600 Supplies				
610 General Supplies				740.40
620 Energy				27,454.71
630 Food				33.60
Total Supplies				\$28,228.71
700 Property				
762 Capitalized Equipment - Replacement				37,797.77
Total Property				\$37,797.77
800 Other Objects				
810 Dues and Fees				20.00
Total Other Objects				\$20.00
Total 2700 Student Transportation Services				\$1,489,687.59

LEA : 114064003 Kutztown Area SD

Printed 11/15/2019 10:50:10 AM

General Fund (10)				
2720 Vehicle Operation Services				
	<u>Elementary</u>	<u>Secondary</u>	<u>Federal</u>	<u>Total</u>
100 <u>Personnel Services – Salaries</u>				
100 Personnel Services – Salaries				89,910.88
Total Personnel Services – Salaries				\$89,910.88
200 <u>Personnel Services – Employee Benefits</u>				
210 Group Insurance – Contracted Provider				41,467.73
220 Social Security Contributions				6,611.57
230 PSERS Retirement Contributions				27,607.50
260 Workers' Compensation				474.27
Total Personnel Services – Employee Benefits				\$76,161.07
300 <u>Purchased Professional and Technical Services</u>				
330 Other Professional Services				96.00
340 Technical Services				4,300.00
Total Purchased Professional and Technical Services				\$4,396.00
500 <u>Other Purchased Services</u>				
513 Contracted Carriers				741,808.88
519 Student Transportation Services From Other Sources				231,485.02
580 Travel				189.38
599 Other Miscellaneous Purchased Services				24,376.94
Total Other Purchased Services				\$997,860.22
600 <u>Supplies</u>				
610 General Supplies				740.40
620 Energy				27,454.71
630 Food				33.60
Total Supplies				\$28,228.71
700 <u>Property</u>				
762 Capitalized Equipment - Replacement				37,797.77
Total Property				\$37,797.77
800 <u>Other Objects</u>				
810 Dues and Fees				20.00
Total Other Objects				\$20.00
Total 2720 Vehicle Operation Services				\$1,234,374.65

LEA : 114064003 Kutztown Area SD

Printed 11/15/2019 10:50:10 AM

General Fund (10)

2740 Vehicle Servicing and Maintenance Services	<u>Elementary</u>	<u>Secondary</u>	<u>Federal</u>	<u>Total</u>
400 <u>Purchased Property Services</u>				
430 Repairs and Maintenance Services				16,033.32
Total Purchased Property Services				\$16,033.32
Total 2740 Vehicle Servicing and Maintenance Services				\$16,033.32

LEA : 114064003 Kutztown Area SD

Printed 11/15/2019 10:50:10 AM

General Fund (10)

2750 Nonpublic Transportation	<u>Elementary</u>	<u>Secondary</u>	<u>Federal</u>	<u>Total</u>
100 <u>Personnel Services – Salaries</u>				
100 Personnel Services – Salaries				12,026.86
Total Personnel Services – Salaries				\$12,026.86
200 <u>Personnel Services – Employee Benefits</u>				
220 Social Security Contributions				920.08
230 PSERS Retirement Contributions				4,020.58
260 Workers’ Compensation				63.70
299 All Other Employee Benefits				550.00
Total Personnel Services – Employee Benefits				\$5,554.36
500 <u>Other Purchased Services</u>				
513 Contracted Carriers				221,698.40
Total Other Purchased Services				\$221,698.40
Total 2750 Nonpublic Transportation				\$239,279.62

LEA : 114064003 Kutztown Area SD

Printed 11/15/2019 10:50:10 AM

General Fund (10)				
2800 Support Services – Central	<u>Elementary</u>	<u>Secondary</u>	<u>Federal</u>	<u>Total</u>
100 <u>Personnel Services – Salaries</u>				
100 Personnel Services – Salaries				17,114.83
Total Personnel Services – Salaries				\$17,114.83
200 <u>Personnel Services – Employee Benefits</u>				
210 Group Insurance – Contracted Provider				12,274.26
220 Social Security Contributions				1,271.44
230 PSERS Retirement Contributions				5,721.50
260 Workers' Compensation				90.65
Total Personnel Services – Employee Benefits				\$19,357.85
300 <u>Purchased Professional and Technical Services</u>				
340 Technical Services				48,960.00
390 Other Purchased Professional and Technical Services				1,610.27
Total Purchased Professional and Technical Services				\$50,570.27
500 <u>Other Purchased Services</u>				
580 Travel				740.35
Total Other Purchased Services				\$740.35
600 <u>Supplies</u>				
610 General Supplies				10,947.91
Total Supplies				\$10,947.91
800 <u>Other Objects</u>				
810 Dues and Fees				209.00
Total Other Objects				\$209.00
Total 2800 Support Services – Central				\$98,940.21

LEA : 114064003 Kutztown Area SD

Printed 11/15/2019 10:50:10 AM

General Fund (10)				
2830 Staff Services	<u>Elementary</u>	<u>Secondary</u>	<u>Federal</u>	<u>Total</u>
100 <u>Personnel Services – Salaries</u>				
100 Personnel Services – Salaries				17,114.83
Total Personnel Services – Salaries				\$17,114.83
200 <u>Personnel Services – Employee Benefits</u>				
210 Group Insurance – Contracted Provider				12,274.26
220 Social Security Contributions				1,271.44
230 PSERS Retirement Contributions				5,721.50
260 Workers' Compensation				90.65
Total Personnel Services – Employee Benefits				\$19,357.85
300 <u>Purchased Professional and Technical Services</u>				
340 Technical Services				48,960.00
390 Other Purchased Professional and Technical Services				1,610.27
Total Purchased Professional and Technical Services				\$50,570.27
500 <u>Other Purchased Services</u>				
580 Travel				740.35
Total Other Purchased Services				\$740.35
600 <u>Supplies</u>				
610 General Supplies				10,947.91
Total Supplies				\$10,947.91
800 <u>Other Objects</u>				
810 Dues and Fees				209.00
Total Other Objects				\$209.00
Total 2830 Staff Services				\$98,940.21

LEA : 114064003 Kutztown Area SD

Printed 11/15/2019 10:50:10 AM

General Fund (10)				
2832 Recruitment and Placement Services	<u>Elementary</u>	<u>Secondary</u>	<u>Federal</u>	<u>Total</u>
100 <u>Personnel Services – Salaries</u>				
100 Personnel Services – Salaries				17,114.83
Total Personnel Services – Salaries				\$17,114.83
200 <u>Personnel Services – Employee Benefits</u>				
210 Group Insurance – Contracted Provider				12,274.26
220 Social Security Contributions				1,271.44
230 PSERS Retirement Contributions				5,721.50
260 Workers' Compensation				90.65
Total Personnel Services – Employee Benefits				\$19,357.85
300 <u>Purchased Professional and Technical Services</u>				
340 Technical Services				48,960.00
390 Other Purchased Professional and Technical Services				1,610.27
Total Purchased Professional and Technical Services				\$50,570.27
500 <u>Other Purchased Services</u>				
580 Travel				740.35
Total Other Purchased Services				\$740.35
600 <u>Supplies</u>				
610 General Supplies				10,947.91
Total Supplies				\$10,947.91
800 <u>Other Objects</u>				
810 Dues and Fees				209.00
Total Other Objects				\$209.00
Total 2832 Recruitment and Placement Services				\$98,940.21

LEA : 114064003 Kutztown Area SD

Printed 11/15/2019 10:50:10 AM

General Fund (10)				
2900 Other Support Services	<u>Elementary</u>	<u>Secondary</u>	<u>Federal</u>	<u>Total</u>
500 <u>Other Purchased Services</u>				
595 IU Payments By Withholding				26,981.61
Total Other Purchased Services				\$26,981.61
Total 2900 Other Support Services				\$26,981.61

LEA : 114064003 Kutztown Area SD

Printed 11/15/2019 10:50:10 AM

General Fund (10)				
2910 Support Services Not Listed Elsewhere In the 2000 Series	<u>Elementary</u>	<u>Secondary</u>	<u>Federal</u>	<u>Total</u>
500 <u>Other Purchased Services</u>				
595 IU Payments By Withholding				26,981.61
Total Other Purchased Services				\$26,981.61
Total 2910 Support Services Not Listed Elsewhere In the 2000 Series				\$26,981.61

LEA : 114064003 Kutztown Area SD

Printed 11/15/2019 10:50:18 AM

General Fund (10)

3000 Operation of Non-Instructional Services		<u>Total</u>
100 <u>Personnel Services – Salaries</u>		
100 Personnel Services – Salaries	405,932.26	
Total Personnel Services – Salaries	\$405,932.26	
200 <u>Personnel Services – Employee Benefits</u>		
210 Group Insurance – Contracted Provider	679.54	
220 Social Security Contributions	30,899.73	
230 PSERS Retirement Contributions	123,159.03	
260 Workers' Compensation	2,085.47	
Total Personnel Services – Employee Benefits	\$156,823.77	
300 <u>Purchased Professional and Technical Services</u>		
330 Other Professional Services	15,019.11	
390 Other Purchased Professional and Technical Services	2,838.38	
Total Purchased Professional and Technical Services	\$17,857.49	
400 <u>Purchased Property Services</u>		
430 Repairs and Maintenance Services	18,037.94	
440 Rentals	6,643.03	
Total Purchased Property Services	\$24,680.97	
500 <u>Other Purchased Services</u>		
510 Student Transportation Services	44,517.70	
520 Insurance – General	11,116.00	
580 Travel	2,008.04	
591 Services Purchased Locally	18,158.58	
592 Services Purchased From Another LEA Within the State	150.00	
Total Other Purchased Services	\$75,950.32	
600 <u>Supplies</u>		
610 General Supplies	100,742.19	
Total Supplies	\$100,742.19	
800 <u>Other Objects</u>		
810 Dues and Fees	2,870.00	
Total Other Objects	\$2,870.00	
Total 3000 Operation of Non-Instructional Services	\$784,857.00	

LEA : 114064003 Kutztown Area SD

Printed 11/15/2019 10:50:18 AM

General Fund (10)				
3200 Student Activities				
	<u>Elementary</u>	<u>Secondary</u>	<u>Federal</u>	<u>Total</u>
100 <u>Personnel Services – Salaries</u>				
100 Personnel Services – Salaries				405,932.26
Total Personnel Services – Salaries				\$405,932.26
200 <u>Personnel Services – Employee Benefits</u>				
210 Group Insurance – Contracted Provider				679.54
220 Social Security Contributions				30,899.73
230 PSERS Retirement Contributions				123,159.03
260 Workers' Compensation				2,085.47
Total Personnel Services – Employee Benefits				\$156,823.77
300 <u>Purchased Professional and Technical Services</u>				
330 Other Professional Services				15,000.00
390 Other Purchased Professional and Technical Services				2,838.38
Total Purchased Professional and Technical Services				\$17,838.38
400 <u>Purchased Property Services</u>				
430 Repairs and Maintenance Services				18,037.94
440 Rentals				6,643.03
Total Purchased Property Services				\$24,680.97
500 <u>Other Purchased Services</u>				
510 Student Transportation Services				44,517.70
520 Insurance – General				11,116.00
580 Travel				2,008.04
Total Other Purchased Services				\$57,641.74
600 <u>Supplies</u>				
610 General Supplies				99,716.34
Total Supplies				\$99,716.34
800 <u>Other Objects</u>				
810 Dues and Fees				2,870.00
Total Other Objects				\$2,870.00
Total 3200 Student Activities				\$765,503.46

LEA : 114064003 Kutztown Area SD

Printed 11/15/2019 10:50:18 AM

General Fund (10)				
3300 Community Services	<u>Elementary</u>	<u>Secondary</u>	<u>Federal</u>	<u>Total</u>
300 <u>Purchased Professional and Technical Services</u>				
330 Other Professional Services			19.11	19.11
Total Purchased Professional and Technical Services			\$19.11	\$19.11
500 <u>Other Purchased Services</u>				
591 Services Purchased Locally				18,158.58
592 Services Purchased From Another LEA Within the State				150.00
Total Other Purchased Services				\$18,308.58
600 <u>Supplies</u>				
610 General Supplies			1,025.85	1,025.85
Total Supplies			\$1,025.85	\$1,025.85
Total 3300 Community Services			\$1,044.96	\$19,353.54

LEA : 114064003 Kutztown Area SD

Printed 11/15/2019 10:50:27 AM

General Fund (10)

5000 Other Expenditures and Financing Uses		<u>Total</u>
800 <u>Other Objects</u>		
830 Interest		682,958.94
880 Refunds of Prior Years' Receipts		11.51
Total Other Objects		\$682,970.45
900 <u>Other Uses of Funds</u>		
910 Redemption of Principal		2,056,786.13
939 Other Fund Transfers		63,554.72
Total Other Uses of Funds		\$2,120,340.85
Total 5000 Other Expenditures and Financing Uses		\$2,803,311.30

LEA : 114064003 Kutztown Area SD

Printed 11/15/2019 10:50:27 AM

General Fund (10)

5100 Debt Service / Other Expenditures and Financing Uses	<u>Elementary</u>	<u>Secondary</u>	<u>Federal</u>	<u>Total</u>
800 <u>Other Objects</u>				
830 Interest				682,958.94
880 Refunds of Prior Years' Receipts				11.51
Total Other Objects				\$682,970.45
900 <u>Other Uses of Funds</u>				
910 Redemption of Principal				2,056,786.13
Total Other Uses of Funds				\$2,056,786.13
Total 5100 Debt Service / Other Expenditures and Financing Uses				\$2,739,756.58

LEA : 114064003 Kutztown Area SD

Printed 11/15/2019 10:50:27 AM

General Fund (10)

5110 Debt Service	<u>Elementary</u>	<u>Secondary</u>	<u>Federal</u>	<u>Total</u>
800 <u>Other Objects</u>				
830 Interest				682,958.94
Total Other Objects				\$682,958.94
900 <u>Other Uses of Funds</u>				
910 Redemption of Principal				2,056,786.13
Total Other Uses of Funds				\$2,056,786.13
Total 5110 Debt Service				\$2,739,745.07

LEA : 114064003 Kutztown Area SD

Printed 11/15/2019 10:50:27 AM

General Fund (10)

5130 Refund of Prior Year Revenues / Receipts	<u>Elementary</u>	<u>Secondary</u>	<u>Federal</u>	<u>Total</u>
800 <u>Other Objects</u>				
880 Refunds of Prior Years' Receipts				11.51
Total Other Objects				\$11.51
Total 5130 Refund of Prior Year Revenues / Receipts				\$11.51

LEA : 114064003 Kutztown Area SD

Printed 11/15/2019 10:50:27 AM

General Fund (10)

5200 Interfund Transfers – Out	<u>Elementary</u>	<u>Secondary</u>	<u>Federal</u>	<u>Total</u>
900 <u>Other Uses of Funds</u>				
939 Other Fund Transfers				63,554.72
Total Other Uses of Funds				\$63,554.72
Total 5200 Interfund Transfers – Out				\$63,554.72

LEA : 114064003 Kutztown Area SD

Printed 11/15/2019 10:50:27 AM

General Fund (10)

5230 Capital Projects Fund Transfers	<u>Elementary</u>	<u>Secondary</u>	<u>Federal</u>	<u>Total</u>
900 <u>Other Uses of Funds</u>				
939 Other Fund Transfers				63,554.72
Total Other Uses of Funds				\$63,554.72
Total 5230 Capital Projects Fund Transfers				\$63,554.72

LEA : 114064003 Kutztown Area SD

Printed 11/15/2019 10:50:01 AM

Other Capital Projects Fund (39)

1000 Instruction		<u>Total</u>
600 <u>Supplies</u>		
610 General Supplies		6,578.92
Total Supplies		\$6,578.92
Total 1000 Instruction		\$6,578.92

LEA : 114064003 Kutztown Area SD

Printed 11/15/2019 10:50:01 AM

Other Capital Projects Fund (39)

1100 Regular Programs – Elementary / Secondary

	<u>Elementary</u>	<u>Secondary</u>	<u>Federal</u>	<u>Total</u>
600 <u>Supplies</u>				
610 General Supplies		6,578.92		6,578.92
Total Supplies		\$6,578.92		\$6,578.92
Total 1100 Regular Programs – Elementary / Secondary		\$6,578.92		\$6,578.92

LEA : 114064003 Kutztown Area SD

Printed 11/15/2019 10:50:01 AM

Other Capital Projects Fund (39)

1110 Regular Programs

	<u>Elementary</u>	<u>Secondary</u>	<u>Federal</u>	<u>Total</u>
600 <u>Supplies</u>				
610 General Supplies		6,578.92		6,578.92
Total Supplies		\$6,578.92		\$6,578.92
Total 1110 Regular Programs		\$6,578.92		\$6,578.92

LEA : 114064003 Kutztown Area SD

Printed 11/15/2019 10:50:14 AM

Other Capital Projects Fund (39)

2000 Support Services

Total

700 <u>Property</u>	
762 Capitalized Equipment - Replacement	2,395,768.87
Total Property	\$2,395,768.87
Total 2000 Support Services	\$2,395,768.87

LEA : 114064003 Kutztown Area SD

Printed 11/15/2019 10:50:14 AM

Other Capital Projects Fund (39)

2600 Operation and Maintenance of Plant Services

Elementary

Secondary

Federal

Total

700 Property

762 Capitalized Equipment - Replacement

2,395,768.87

Total Property				\$2,395,768.87
Total 2600 Operation and Maintenance of Plant Services				\$2,395,768.87

LEA : 114064003 Kutztown Area SD

Printed 11/15/2019 10:50:14 AM

Other Capital Projects Fund (39)

2620 Operation of Buildings Services	<u>Elementary</u>	<u>Secondary</u>	<u>Federal</u>	<u>Total</u>
700 <u>Property</u>				
762 Capitalized Equipment - Replacement				2,395,768.87
Total Property				\$2,395,768.87
Total 2620 Operation of Buildings Services				\$2,395,768.87

LEA : 114064003 Kutztown Area SD

Printed 11/15/2019 10:50:23 AM

Other Capital Projects Fund (39)

4000 Facilities Acquisition, Construction and Improvement Services		<u>Total</u>
300 <u>Purchased Professional and Technical Services</u>		
330 Other Professional Services		14,938.07
Total Purchased Professional and Technical Services		\$14,938.07
400 <u>Purchased Property Services</u>		
450 Construction Services		42,283.77
Total Purchased Property Services		\$42,283.77
700 <u>Property</u>		
762 Capitalized Equipment - Replacement		988.00
Total Property		\$988.00
Total 4000 Facilities Acquisition, Construction and Improvement Services		\$58,209.84

LEA : 114064003 Kutztown Area SD

Printed 11/15/2019 10:50:23 AM

Other Capital Projects Fund (39)

4400 Architecture and Engineering Services / Educational Specifications – Improvements	<u>Elementary</u>	<u>Secondary</u>	<u>Federal</u>	<u>Total</u>
300 <u>Purchased Professional and Technical Services</u>				
330 Other Professional Services				14,938.07
Total Purchased Professional and Technical Services				\$14,938.07
Total 4400 Architecture and Engineering Services / Educational Specifications – Improvements				\$14,938.07

4600 Existing Building Improvement Services

Elementary

Secondary

FederalTotal

400 Purchased Property Services

450 Construction Services

42,283.77

Total Purchased Property Services

\$42,283.77

700 Property

762 Capitalized Equipment - Replacement

988.00

Total Property

\$988.00

Total 4600 Existing Building Improvement Services

\$43,271.77

LEA : 114064003 Kutztown Area SD

Printed 11/15/2019 10:50:43 AM

	<u>General Fund(10)</u>	<u>Public Purpose Trust(27)</u>	<u>Other Compt Approved (28)</u>	<u>Athletic / Activity(29)</u>	<u>Capital Reserve (690. 1850)(31)</u>
1000 <u>Instruction</u>					
1100 Regular Programs - Elementary / Secondary	13,378,476.87				
1200 Special Programs - Elementary / Secondary	4,544,040.96				
1300 Vocational Education	1,039,775.63				
1400 Other Instructional Programs - Elementary / Secondary	182,631.30				
1600 Adult Education Programs	4,604.19				
Total Instruction	\$19,149,528.95				
2000 <u>Support Services</u>					
2100 Support Services - Students	1,067,879.12				
2200 Support Services - Instructional Staff	1,655,864.75				
2300 Support Services - Administration	2,120,882.72				
2400 Support Services - Pupil Health	547,903.93				
2500 Support Services - Business	469,542.74				
2600 Operation and Maintenance of Plant Services	2,632,874.08				
2700 Student Transportation Services	1,489,687.59				
2800 Support Services - Central	98,940.21				
2900 Other Support Services	26,981.61				
Total Support Services	\$10,110,556.75				
3000 <u>Operation of Non-Instructional Services</u>					
3200 Student Activities	765,503.46				
3300 Community Services	19,353.54				
Total Operation of Non-Instructional Services	\$784,857.00				
4000 <u>Facilities Acquisition, Construction and Improvement Services</u>					
4400 Architecture and Engineering Services / Educational Specifications - Improvements					
4600 Existing Building Improvement Services					
Total Facilities Acquisition, Construction and Improvement					
5000 <u>Other Expenditures and Financing Uses</u>					
5100 Debt Service / Other Expenditures and Financing Uses	2,739,756.58				
5200 Interfund Transfers - Out	63,554.72				
Total Other Expenditures and Financing Uses	\$2,803,311.30				
TOTAL ACTUAL EXPENDITURES & OTHER FINANCING USES	\$32,848,254.00				

LEA : 114064003 Kutztown Area SD

Printed 11/15/2019 10:50:43 AM

	Capital Reserve (1431)(32)	Other Capital Projects Fund(39)	Debt Service(40)	Permanent(90)	Total
1000 Instruction					
1100 Regular Programs - Elementary / Secondary		6,578.92			13,385,055.79
1200 Special Programs - Elementary / Secondary					4,544,040.96
1300 Vocational Education					1,039,775.63
1400 Other Instructional Programs - Elementary / Secondary					182,631.30
1600 Adult Education Programs					4,604.19
Total Instruction		\$6,578.92			\$19,156,107.87
2000 Support Services					
2100 Support Services - Students					1,067,879.12
2200 Support Services - Instructional Staff					1,655,864.75
2300 Support Services - Administration					2,120,882.72
2400 Support Services - Pupil Health					547,903.93
2500 Support Services - Business					469,542.74
2600 Operation and Maintenance of Plant Services		2,395,768.87			5,028,642.95
2700 Student Transportation Services					1,489,687.59
2800 Support Services - Central					98,940.21
2900 Other Support Services					26,981.61
Total Support Services		\$2,395,768.87			\$12,506,325.62
3000 Operation of Non-Instructional Services					
3200 Student Activities					765,503.46
3300 Community Services					19,353.54
Total Operation of Non-Instructional Services					\$784,857.00
4000 Facilities Acquisition, Construction and Improvement Services					
4400 Architecture and Engineering Services / Educational Specifications - Improvements		14,938.07			14,938.07
4600 Existing Building Improvement Services		43,271.77			43,271.77
Total Facilities Acquisition, Construction and Improvement		\$58,209.84			\$58,209.84
5000 Other Expenditures and Financing Uses					
5100 Debt Service / Other Expenditures and Financing Uses					2,739,756.58
5200 Interfund Transfers - Out					63,554.72
Total Other Expenditures and Financing Uses					\$2,803,311.30
TOTAL ACTUAL EXPENDITURES & OTHER FINANCING USES		\$2,460,557.63			\$35,308,811.63

LEA : 114064003 Kutztown Area SD

Printed 11/15/2019 10:50:52 AM

PSERS Salary Data (Salary Data should relate to the General Fund only)

Amount	Description	Amount
	Total Salary Base for salaries subject to PSERS withholding	13,881,716.66
	Total Federally Funded salaries subject to PSERS withholding	355,031.68

Title I Expenditure Data

Amount	Description	Amount
	Expenditures Funded with Current Title I Funds	240,687.00
	Expenditures Funded with Carry over Title I Funds	7,800.01
Total Title I Expenditure Data		\$248,487.01

Benefits for Staff Relative to Collective Bargaining Agreements

	OBJECT	COVERED	NOT COVERED	TOTAL
10 General Fund	No Self Insurance data to report			
	211 Medical Insurance	1,656,241.20	1,217,601.96	2,873,843.16
	212 Dental Insurance	25,833.46	14,455.90	40,289.36
	215 Eye Care Insurance	10,213.30	6,735.84	16,949.14
	216 Prescription Insurance			
	271 Self-Insurance Medical Benefits			
	272 Self-Insurance Dental Benefits			
	275 Self-Insurance Eye Care Benefits			
	276 Self-Insurance Prescription Benefits			
	FUND TOTAL	\$1,692,287.96	\$1,238,793.70	\$2,931,081.66
50 Enterprise Fund	No Self Insurance data to report			
	211 Medical Insurance		40,229.84	40,229.84
	212 Dental Insurance		880.32	880.32
	215 Eye Care Insurance		424.08	424.08
	216 Prescription Insurance			
	271 Self-Insurance Medical Benefits			
	272 Self-Insurance Dental Benefits			
	275 Self-Insurance Eye Care Benefits			
	276 Self-Insurance Prescription Benefits			
	FUND TOTAL		\$41,534.24	\$41,534.24
60 Internal Service Fund	No Self Insurance data to report			
	211 Medical Insurance			
	212 Dental Insurance			
	215 Eye Care Insurance			
	216 Prescription Insurance			
	271 Self-Insurance Medical Benefits			
	272 Self-Insurance Dental Benefits			
	275 Self-Insurance Eye Care Benefits			
	276 Self-Insurance Prescription Benefits			
	FUND TOTAL			
Total of All Funds		\$1,692,287.96	\$1,280,327.94	\$2,972,615.90

LEA : 114064003 Kutztown Area SD

Printed 11/15/2019 10:50:59 AM

Function	Special Education (Prior Year)	Nonspecial Education (Prior Year)	Total (Prior Year)	Special Education (Current Year)	Nonspecial Education (Current Year)	Total (Current Year)
2120 Guidance Services	144,300.91	600,670.23	744,971.14	152,373.01	636,670.18	789,043.19
2140 Psychological Services	133,602.25		133,602.25	141,385.37		141,385.37
2150 Speech Pathology and Audiology Services						
2160 Social Work Services						
2260 Instruction and Curriculum Development Services	52,341.10	217,876.25	270,217.35	49,486.34	206,772.03	256,258.37
2350 Legal and Accounting Services	1,988.00	14,607.00	16,595.00	11,479.50	19,899.00	31,378.50
2420 Medical Services	25,157.44	104,720.94	129,878.38	24,472.83	102,256.43	126,729.26
2440 Nursing Services	73,119.81	304,370.19	377,490.00	81,304.54	339,720.13	421,024.67
2700 Student Transportation Services	352,298.90	772,743.10	1,125,042.00	474,457.92	1,015,229.67	1,489,687.59
Total	\$782,808.41	\$2,014,987.71	\$2,797,796.12	\$934,959.51	\$2,320,547.44	\$3,255,506.95

LEA : 114064003 Kutztown Area SD

Printed 11/15/2019 10:51:03 AM

(PRINCIPAL AMOUNTS ONLY)								
<u>GOVERNMENTAL FUNDS/ ACTIVITIES</u>	Short-Term Borrowing	General Obligation Bonds/Notes	Authority Building Obligations	Other Long-Term Debt	Other Post- Employment Benefits (OPEB)	Compensated Absences	Net Pension Liability	Total
1. Debt at Beginning of Fiscal Year		27,705,000.00			6,101,796.00	428,849.00	51,503,898.00	85,739,543.00
2. Additional Debt Incurred During Year					342,687.00	47,156.00	486,695.00	876,538.00
3. Retirements and Repayments		1,830,000.00			407,133.00		4,257,111.00	6,494,244.00
4. Debt at End of Fiscal Year		25,875,000.00			6,037,350.00	476,005.00	47,733,482.00	80,121,837.00
5. Accreted Interest at End Of Fiscal Year								
6. Total Debt and Accreted Interest		25,875,000.00			6,037,350.00	476,005.00	47,733,482.00	80,121,837.00
7. Current Portion P&I - Due within 1 year		2,496,346.26				90,573.00		2,586,919.26
8. Interest Paid during current fiscal year		673,981.04						673,981.04

(PRINCIPAL AMOUNTS ONLY)								
<u>PROPRIETARY FUNDS</u>	Short-Term Borrowing	General Obligation Bonds/Notes	Authority Building Obligations	Other Long-Term Debt	Other Post- Employment Benefits (OPEB)	Compensated Absences	Net Pension Liability	Total
1. Debt at Beginning of Fiscal Year					110,682.00		848,102.00	958,784.00
2. Additional Debt Incurred During Year					6,930.00			6,930.00
3. Retirements and Repayments					8,410.00		96,584.00	104,994.00
4. Debt at End of Fiscal Year					109,202.00		751,518.00	860,720.00
5. Accreted Interest at End Of Fiscal Year								
6. Total Debt and Accreted Interest					109,202.00		751,518.00	860,720.00
7. Current Portion P&I - Due within 1 year								
8. Interest Paid during current fiscal year								

LEA : 114064003 Kutztown Area SD

Printed 11/15/2019 10:51:03 AM

Total Principal and Interest Payments Made by Your School - All Funds

Function	Fund		Principal (910)	Principal (920)	Interest (830)	Total (Principal +Interest)	Misc Other Uses (990)
5110	10	General Fund	2,056,786.13		682,958.94	2,739,745.07	
5110	20	Special Revenue Funds					
5110	30	Capital Projects Funds					
5110	40	Debt Service Fund					
5110	90	Permanent Fund					
5120	10	General Fund					
5120	20	Special Revenue Funds					
5120	30	Capital Projects Funds					
5120	40	Debt Service Fund					
Total Debt Payments - Governmental Funds			\$2,056,786.13		\$682,958.94	\$2,739,745.07	

Function	Fund		Principal (910)	Principal (920)	Interest (830)	Total (Principal +Interest)
5110	50	Enterprise Fund				
5110	60	Internal Service Fund				
5120	50	Enterprise Fund				
5120	60	Internal Service Fund				
Total Debt Payments - Proprietary Funds						

LEA : 114064003 Kutztown Area SD

Printed 11/15/2019 10:51:03 AM

Debt Details
Governmental Funds/ Activities

Debt Category	Debt Issue Date (MM/YYYY)	Principal Amounts Only				Current Portion Due Within One Year (Principal and Interest)	Interest Paid During Fiscal Year
		Debt at Beginning of Fiscal Year	Additions	Reductions / Repayments	Debt at End of Fiscal Year		
General Obligation Bonds/Notes – CIB	03/2018	4,280,000.00		5,000.00	4,275,000.00	169,587.50	164,322.28
General Obligation Bonds/Notes – CIB	05/2017	3,025,000.00		5,000.00	3,020,000.00	123,646.26	118,706.26
General Obligation Bonds/Notes – CIB	10/2016	7,735,000.00		1,130,000.00	6,605,000.00	1,265,587.50	135,362.50
General Obligation Bonds/Notes – CIB	10/2016	9,205,000.00		20,000.00	9,185,000.00	214,100.00	194,340.00
General Obligation Bonds/Notes – CIB	05/2013	3,460,000.00		670,000.00	2,790,000.00	723,425.00	61,250.00
Compensated Absences		428,849.00	47,156.00		476,005.00	90,573.00	
Other Post-Employment Benefits (OPEB)		6,101,796.00	342,687.00	407,133.00	6,037,350.00		
Net Pension Liability		51,503,898.00	486,695.00	4,257,111.00	47,733,482.00		
Totals for Debt Entered:		\$85,739,543.00	\$876,538.00	\$6,494,244.00	\$80,121,837.00	\$2,586,919.26	\$673,981.04

Bond Details
Proprietary Funds

Debt Category	Debt Issue Date (MM/YYYY)	Principal Amounts Only				Current Portion Due Within One Year (Principal and Interest)	Interest Paid During Fiscal Year
		Debt at Beginning of Fiscal Year	Additions	Reductions / Repayments	Debt at End of Fiscal Year		
Other Post-Employment Benefits (OPEB)		110,682.00	6,930.00	8,410.00	109,202.00		
Net Pension Liability		848,102.00		96,584.00	751,518.00		
Totals for Debt Entered:		\$958,784.00	\$6,930.00	\$104,994.00	\$860,720.00		

LEA : 114064003 Kutztown Area SD

Printed 11/15/2019 10:51:06 AM

General Fund (10)

Section 1: Tuition/Purchased Services as Reported within Expenditure Detail	Amount
Tuition Reported in General Fund Expenditures 1000-560	2,395,492.04
Purchased Services in General Fund Expenditures 1000-594 and 1000-597	
Section 1 Total	\$2,395,492.04

Section 2: Tuition Paid to Institution Types During Fiscal Year	Tuition Paid For Nonspecial Education	Tuition Paid For Special Education	Total
1 1306 Institutions			
2 Institutionalized Children's Programs			
3 Juveniles Incarcerated in Adult Facilities			
4 Residential Treatment Facilities			
5 Other Local Education Agencies	10,014.37	51,594.27	61,608.64
6 Brick and Mortar Charter Schools	650,326.21	175,934.81	826,261.02
7 Cyber Charter Schools	306,445.09	309,898.08	616,343.17
8 Career and Technology Centers	367,909.69	193,784.49	561,694.18
9 Approved Private Schools			
10 PA Chartered Schools for the Deaf and Blind			
11 Private Residential Rehabilitative Institutions	8,507.43		8,507.43
12 Juvenile Detention Centers			
13 Special Program Jointures			
14 Other Tuition Not Included Elsewhere In This Section	78,576.00	242,501.60	321,077.60
Section 2 Total	\$1,421,778.79	\$973,713.25	\$2,395,492.04

1 .	<u>Student Transportation Services for Educational Field Trips</u>	3,519.61
2 .	<u>Student Transportation Services for Student Activities</u>	4,775.14
3 .	<u>Rental of Vehicles for Student Transportation Services</u>	
4 .	<u>Capital Reserve Funds</u>	

Include only district-owned transportation expenditures paid from State or local money.
DO NOT include federal expenditures or payments to contract service providers.
Contracted transportation services should not be recorded on this schedule.

LEA : 114064003 Kutztown Area SD

Printed 11/15/2019 10:51:12 AM

Food Service / Cafeteria Operations Fund (51)

3000 Operation of Non-Instructional Services

Total

100 Personnel Services – Salaries	206,314.39
Total Personnel Services – Salaries	\$206,314.39
200 Personnel Services – Employee Benefits	
210 Group Insurance – Contracted Provider	47,317.19
220 Social Security Contributions	15,462.25
230 PSERS Retirement Contributions	55,001.26
250 Unemployment Compensation	541.96
260 Workers' Compensation	1,092.81
280 Other Post-Employment Benefits (OPEB)	(834.00)
299 All Other Employee Benefits	505.27
Total Personnel Services – Employee Benefits	\$119,086.74
300 Purchased Professional and Technical Services	
340 Technical Services	1,640.52
Total Purchased Professional and Technical Services	\$1,640.52
400 Purchased Property Services	
430 Repairs and Maintenance Services	11,259.57
Total Purchased Property Services	\$11,259.57
500 Other Purchased Services	
580 Travel	816.97
591 Services Purchased Locally	21,110.11
Total Other Purchased Services	\$21,927.08
600 Supplies	
610 General Supplies	21,401.62
620 Energy	1,616.80
630 Food	250,306.37
Total Supplies	\$273,324.79
700 Property	
740 Depreciation	12,350.04
Total Property	\$12,350.04
800 Other Objects	
810 Dues and Fees	260.00
Total Other Objects	\$260.00
Total 3000 Operation of Non-Instructional Services	\$646,163.13

LEA : 114064003 Kutztown Area SD

Printed 11/15/2019 10:51:12 AM

Food Service / Cafeteria Operations Fund (51)

3100 Food Services	Elementary	Secondary	Federal	Total
100 <u>Personnel Services – Salaries</u>				
100 Personnel Services – Salaries				206,314.39
Total Personnel Services – Salaries				\$206,314.39
200 <u>Personnel Services – Employee Benefits</u>				
210 Group Insurance – Contracted Provider				47,317.19
220 Social Security Contributions				15,462.25
230 PSERS Retirement Contributions				55,001.26
250 Unemployment Compensation				541.96
260 Workers' Compensation				1,092.81
280 Other Post-Employment Benefits (OPEB)				(834.00)
299 All Other Employee Benefits				505.27
Total Personnel Services – Employee Benefits				\$119,086.74
300 <u>Purchased Professional and Technical Services</u>				
340 Technical Services				1,640.52
Total Purchased Professional and Technical Services				\$1,640.52
400 <u>Purchased Property Services</u>				
430 Repairs and Maintenance Services				11,259.57
Total Purchased Property Services				\$11,259.57
500 <u>Other Purchased Services</u>				
580 Travel				816.97
591 Services Purchased Locally				21,110.11
Total Other Purchased Services				\$21,927.08
600 <u>Supplies</u>				
610 General Supplies				21,401.62
620 Energy				1,616.80
630 Food				250,306.37
Total Supplies				\$273,324.79
700 <u>Property</u>				
740 Depreciation				12,350.04
Total Property				\$12,350.04
800 <u>Other Objects</u>				
810 Dues and Fees				260.00
Total Other Objects				\$260.00
Total 3100 Food Services				\$646,163.13

	<u>Food Service(51)</u>	<u>Child Care Operations(52)</u>	<u>Other Enterprise(58)</u>	<u>Internal Service(60)</u>	<u>Total</u>
3000 <u>Operation of Non-Instructional Services</u>					
3100 Food Services	646,163.13				646,163.13
Total Operation of Non-Instructional Services	\$646,163.13				\$646,163.13
TOTAL ACTUAL EXPENDITURES & OTHER FINANCING USES	\$646,163.13				\$646,163.13

LEA : 114064003 Kutztown Area SD

Printed 11/15/2019 10:51:28 AM

Fund	School	School Number	Local Personnel	Local Nonpersonnel	State Personnel	State Nonpersonnel	Federal Personnel	Federal Nonpersonnel	Total	Explanation
10										
	Greenwich-Lenhartsville El Sch	810	2,830,009.55	457,940.48	1,106,910.59	179,115.71	140,748.47	77,141.34	4,791,866.14	
	Kutztown Area MS	6315	4,001,531.32	769,581.00	1,565,131.62	301,008.65			6,637,252.59	
	Kutztown Area SHS	816	5,226,487.25	1,465,787.79	2,044,252.50	573,318.22			9,309,845.76	
	Kutztown El Sch	6316	3,818,553.67	686,763.72	1,493,562.98	268,616.07	69,576.32	40,582.51	6,377,655.27	
Total			15,876,581.79	3,380,072.99	6,209,857.69	1,322,058.65	210,324.79	117,723.85	27,116,619.76	