

LEA Name : Kutztown Area SD
Address : 251 Long Lane
Kutztown, PA 19530

County : Berks
AUN Number : 114064003
LEA Type : SD

Annual Financial Report Accuracy Certification Statement

For Fiscal Year Ending
6/30/2021

Pennsylvania Department of Education
&

Office of Comptroller Operations

PDE-2056: Intermediate Unit
PDE-2057: School District, AVTS/CTC, Charter School,
and Special Program Jointure

CERTIFICATION: By signing this page I agree that the electronic data submitted is a complete and accurate statement of the financial operations and status of the local education agency for the fiscal year. It has been prepared in accordance with generally accepted accounting principles and established Commonwealth of PA reporting guidelines.

Chief School Administrator Signature

Date

Board Secretary Signature

Date

DAVID MILLER

(484)641-5526 Ext :

Contact Person

Contact Person Telephone Number

dmiller@kasd.org

Contact Person E-mail Address

Contact Person Fax Number

Audit Certification

Annual Financial Report:

For Fiscal Year Ending 6/30/2021

(Pursuant to PA School Code Section 218(b))

LEA Name : Kutztown Area SD

AUN Number : 114064003

County : Berks

Audit Certification Due:

12/31/2021

This certification is applicable to the Annual Financial Report data submitted through the Consolidated Financial Reporting System (CFRS).

CERTIFICATION: By signing this page I agree that the financial statements of the school have been properly audited as noted above pursuant to Article XXIV, and in the auditor's professional opinion, the Annual Financial Report (PDE-2057) submitted through CFRS is materially consistent with the audited financial statements.

Chief School Administrator

Signature

Date

11-18-21

Board Secretary

Signature

Date

11.18.2021

DAVID MILLER

Contact Person

(484)641-5526

Ext :

Contact Person Telephone Number

dmiller@kasd.org

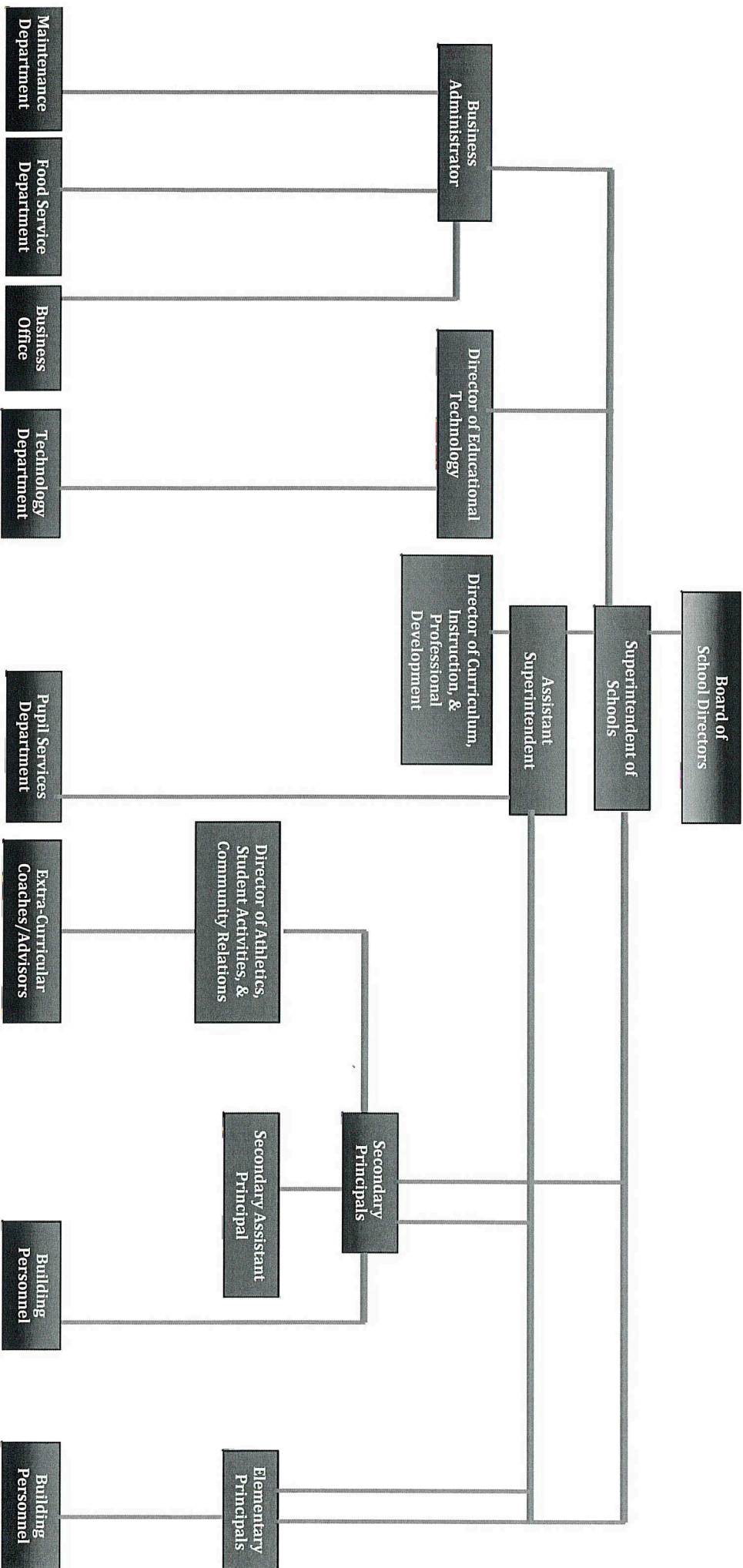
Contact Person E-mail Address

Contact Person Fax Number

KUTZTOWN AREA SCHOOL DISTRICT

No. 008

SECTION:	LOCAL BOARD PROCEDURES						
TITLE:	ORGANIZATION CHART						
ADOPTED:	September 21, 2009						
REVISED:	<table border="0"> <tr> <td>October 17, 2011</td> <td>November 17, 2014</td> </tr> <tr> <td>October 15, 2012</td> <td>September 21, 2015</td> </tr> <tr> <td>September 16, 2013</td> <td>September 4, 2018</td> </tr> </table>	October 17, 2011	November 17, 2014	October 15, 2012	September 21, 2015	September 16, 2013	September 4, 2018
October 17, 2011	November 17, 2014						
October 15, 2012	September 21, 2015						
September 16, 2013	September 4, 2018						



Capitalization Policy

Book	Policy Manual
Section	600 Finances
Title	GASB Statement 34
Code	622
Status	Active
Adopted	March 18, 2002
Last Revised	October 18, 2010

Purpose

The Board recognizes the need to implement the required accounting and financial reporting standards stipulated by the Pennsylvania Department of Education.

The primary objectives of implementing the GASB Statement 34 are to assure compliance with state requirements, and properly account for both the financial and economic resources of the district, specifically:

1. New entity-wide financial statements reflecting the overall financial position of the district.
2. Long-term focus for school district activities.
3. Narrative overview and analysis.
4. Information on major funds.
5. Expanded budgetary reporting.

Definition

A **capitalized asset** shall be any asset acquired by donation or purchase that has a useful life of longer than one (1) year or extends the life of another capitalized asset or increases its value and meets a specific dollar threshold.

Authority

Participation of the school district in any such activity shall be in accordance with Board policy.[1][2]

Delegation of Responsibility

The responsibility to coordinate the compilation and preparation of all information necessary to implement this policy in accordance with district administrative regulations is delegated to the Business Administrator, in cooperation with the local independent auditor.

The designated individual shall be responsible for implementing the necessary procedures to establish and maintain a fixed asset inventory, including depreciation schedules. Depreciation shall be computed on a straight-line basis over the estimated useful lives of the assets, using an averaging convention. Periodically, management shall evaluate the estimated useful life of each depreciable asset to determine if revision of such estimate is required. Normal maintenance and repairs shall be charged to expense as incurred; major renewals and betterments that materially extend the life or increase the value of the asset shall be capitalized. A schedule of accumulated depreciation shall be

consistent from year to year. The basis for depreciation, including groups of assets and useful lives, shall be in writing and submitted for review to the Board.

The Business Administrator shall prepare the required Management Discussion and Analysis (MD&A). The MD&A shall be in the form required by GASB Statement 34 and shall be submitted to the Board for approval, prior to publication.

Prior to submission of the MD&A for Board approval, the district's independent auditors shall review the MD&A, in accordance with SAS No. 52, "Required Supplementary Information".

Guidelines

In order to associate debt with acquired assets and to avoid net asset deficits, any asset that has been acquired with debt proceeds shall be capitalized, regardless of the cost of the asset. The asset life of these assets shall be considered relative to the time of the respective debt amortizations.

All capitalized assets shall be recorded at historical cost at acquisition date or estimated cost if acquired prior to the date of the initial inventory. Any donated capital asset shall be recorded at the date of donation using the fair market value of the item at that date.

A dollar threshold for each asset shall be set at an appropriate level. Administration should periodically review these levels with assistance from the local independent auditor and make any modifications necessary.

The capitalization threshold shall be set at a level that will capture at least eighty percent (80%) of all fixed assets.

The assets listed below do not normally individually meet capitalization threshold criteria:

1. Library books.
2. Classroom texts.
3. Computer equipment.
4. Classroom furniture.

These asset category costs shall be capitalized and depreciated as groups when that group's acquisition cost exceeds the capitalization threshold in any given fiscal year.

For group asset depreciation purposes, the estimated useful life of the group may be based on the weighted average or simple average of the useful life of individual items, or on an assessment of the life of the group as a whole. Periodically, the district shall review the estimated life of groups of assets and adjust the remaining depreciation life of the group.

Assets that fall below the capitalization threshold for GASB 34 reporting purposes may still be significant for insurance, warranty service, and obsolescence/replacement policy tracking purposes. The district may record and maintain these non-GASB 34 asset inventories in subsidiary ledgers.

Legal

1. 24 P.S. 218

2. 24 P.S. 613

Governmental Accounting Standards Board, Statement No. 34

<u>Val Number</u>	<u>Description</u>	<u>Justification</u>
12195	REG: Current Year AFR Beginning Fund Balance must equal Prior Year AFR Ending Fund Balance. Justifications to this error must fully explain the situation that prompted a fund balance restatement. "Auditor Adjustment" is not a sufficient justification. Total Govt Funds, Beg Bal: \$7,353,704.00 PY Ending Bal, Govt Funds: \$7,260,703.00	The difference between the 2 amounts is \$93,001. In prior year that amount was reported in Fiduciary Fund but because of GASB 84 it is now reported in Govt Fund.
30685	Revenue Detail: Current Tax Revenue amount cannot exceed 50% variance from prior year amount. Correct the data or enter a justification. 6153, Current AFR Rev Detail: \$419,822.56 6153, Prior AFR Rev Detail: \$242,834.72	We had an unusually large number of real estate transfers this year compared to last.
50160	SOIN: All Governmental Fund General Obligation Bonds must include an amount for Interest Paid during Fiscal Year. Correct data or enter a justification.	We issued 3 notes in June 2021. No interest had been paid yet as of 6/30/21.
50410	SESS - 2140 Psychological Services: SESS Schedule amounts for Special Education vary from prior year by 40% or more. Correct the data or enter a justification. SESS Schedule 2140: \$191,390.31 Prior Year SESS Schedule 2140: \$134,799.66	Due to an increase in caseload we had to increase our outside contracted services.

LEA : 114064003 Kutztown Area SD

Printed 11/18/2021 4:14:56 PM

Amounts Expressed in Whole Dollars		<u>General Fund</u> <u>(10)</u>	<u>Student Sponsored</u> <u>Activity Fund</u> <u>(21)</u>	<u>Public Purpose Trust</u> <u>(27)</u>	<u>Other Compt Approved</u> <u>(28)</u>	<u>Athletic / Activity</u> <u>(29)</u>
Assets And Deferred Outflows Of Resources						
Assets						
0100	Cash and Cash Equivalents	3,662,387	73,418			
0110	Investments	4,522,438				
0120	Taxes Receivable	959,766				
0130	Due From Other Funds	276,815				
0141	Due From Other Governments	46,750				
0142	State Revenue Receivable	1,268,654				
0143	Federal Revenue Receivable	171,568				
0145	Other Intergovernmental Revenue Receivable					
0146	Due from Primary Government					
0147	Due from Component Unit					
0150	Other Receivables					
0170	Inventories					
0180	Prepaid Expenses (Expenditures)	5,206				
0190	Other Current Assets					
Total Assets		\$10,913,584	\$73,418			
0910	Deferred Outflows of Resources					
Total Assets And Deferred Outflows Of Resources		\$10,913,584	\$73,418			

LEA : 114064003 Kutztown Area SD

Printed 11/18/2021 4:14:56 PM

Amounts Expressed in Whole Dollars		<u>Capital Reserve (690.</u>	<u>Capital Reserve (1431)</u>	<u>Other Capital Projects</u>	<u>Debt Service</u>	<u>Permanent</u>
		<u>1850)</u>	<u>(32)</u>	<u>Fund</u>	<u>(40)</u>	<u>(90)</u>
		<u>(31)</u>		<u>(39)</u>		
Assets And Deferred Outflows Of Resources						
Assets						
0100	Cash and Cash Equivalents			242,978		
0110	Investments			6,945,251		
0120	Taxes Receivable					
0130	Due From Other Funds			88,078		
0141	Due From Other Governments					
0142	State Revenue Receivable					
0143	Federal Revenue Receivable					
0145	Other Intergovernmental Revenue Receivable					
0146	Due from Primary Government					
0147	Due from Component Unit					
0150	Other Receivables					
0170	Inventories					
0180	Prepaid Expenses (Expenditures)					
0190	Other Current Assets					
Total Assets				\$7,276,307		
0910	Deferred Outflows of Resources					
Total Assets And Deferred Outflows Of Resources				\$7,276,307		

LEA : 114064003 Kutztown Area SD

Printed 11/18/2021 4:14:56 PM

Amounts Expressed in Whole Dollars		<u>Total Governmental</u>
		<u>Funds</u>
Assets And Deferred Outflows Of Resources		
Assets		
0100 Cash and Cash Equivalents	3,978,783	
0110 Investments	11,467,689	
0120 Taxes Receivable	959,766	
0130 Due From Other Funds	364,893	
0141 Due From Other Governments	46,750	
0142 State Revenue Receivable	1,268,654	
0143 Federal Revenue Receivable	171,568	
0145 Other Intergovernmental Revenue Receivable		
0146 Due from Primary Government		
0147 Due from Component Unit		
0150 Other Receivables		
0170 Inventories		
0180 Prepaid Expenses (Expenditures)	5,206	
0190 Other Current Assets		
Total Assets	\$18,263,309	
0910 Deferred Outflows of Resources		
Total Assets And Deferred Outflows Of Resources	\$18,263,309	

LEA : 114064003 Kutztown Area SD

Printed 11/18/2021 4:14:56 PM

Amounts Expressed in Whole Dollars	<u>General Fund</u> <u>(10)</u>	<u>Student Sponsored</u> <u>Activity Fund</u> <u>(21)</u>	<u>Public Purpose Trust</u> <u>(27)</u>	<u>Other Compt Approved</u> <u>(28)</u>	<u>Athletic / Activity</u> <u>(29)</u>
Liabilities And Deferred Inflows Of Resources And Fund Balances					
Liabilities					
0400 Due to Other Funds					
0411 Due to Other Governments					
0412 Due to Primary Government					
0413 Due to Component Unit					
0420 Accounts Payable	411,772	2,093			
0430 Contracts Payable					
0440 Current Portion of Long-Term Debt					
0450 Short-Term Payables					
0461 Accrued Salaries and Benefits					
0462 Payroll Deductions and Withholding	2,850,041				
0480 Unearned Revenues	575,407				
0490 Other Current Liabilities	98,777				
Total Liabilities	\$3,935,997	\$2,093			
0950 Deferred Inflows of Resources					
Fund Balances					
0810 Nonspendable Fund Balance					
0820 Restricted Fund Balance	5,206	71,325			
0830 Committed Fund Balance	3,141,017				
0840 Assigned Fund Balance	366,211				
0850 Unassigned Fund Balance	3,465,153				
Total Fund Balances	\$6,977,587	\$71,325			
Total Liabilities, Deferred Inflows Of Resources And Fund Balances	\$10,913,584	\$73,418			

LEA : 114064003 Kutztown Area SD

Printed 11/18/2021 4:14:56 PM

Amounts Expressed in Whole Dollars		<u>Capital Reserve (690.</u> <u>1850)</u> <u>(31)</u>	<u>Capital Reserve (1431)</u> <u>(32)</u>	<u>Other Capital Projects</u> <u>Fund</u> <u>(39)</u>	<u>Debt Service</u> <u>(40)</u>	<u>Permanent</u> <u>(90)</u>
Liabilities And Deferred Inflows Of Resources And Fund Balances						
Liabilities						
0400	Due to Other Funds					
0411	Due to Other Governments					
0412	Due to Primary Government					
0413	Due to Component Unit					
0420	Accounts Payable			1,583,383		
0430	Contracts Payable					
0440	Current Portion of Long-Term Debt					
0450	Short-Term Payables					
0461	Accrued Salaries and Benefits					
0462	Payroll Deductions and Withholding					
0480	Unearned Revenues					
0490	Other Current Liabilities					
Total Liabilities				\$1,583,383		
0950	Deferred Inflows of Resources					
Fund Balances						
0810	Nonspendable Fund Balance					
0820	Restricted Fund Balance			5,692,924		
0830	Committed Fund Balance					
0840	Assigned Fund Balance					
0850	Unassigned Fund Balance					
Total Fund Balances				\$5,692,924		
Total Liabilities, Deferred Inflows Of Resources And Fund Balances				\$7,276,307		

LEA : 114064003 Kutztown Area SD

Printed 11/18/2021 4:14:56 PM

Amounts Expressed in Whole Dollars		<u>Total Governmental</u> <u>Funds</u>
Liabilities And Deferred Inflows Of Resources And Fund Balances		
Liabilities		
0400 Due to Other Funds		
0411 Due to Other Governments		
0412 Due to Primary Government		
0413 Due to Component Unit		
0420 Accounts Payable	1,997,248	
0430 Contracts Payable		
0440 Current Portion of Long-Term Debt		
0450 Short-Term Payables		
0461 Accrued Salaries and Benefits		
0462 Payroll Deductions and Withholding	2,850,041	
0480 Unearned Revenues	575,407	
0490 Other Current Liabilities	98,777	
Total Liabilities	\$5,521,473	
0950 Deferred Inflows of Resources		
Fund Balances		
0810 Nonspendable Fund Balance		
0820 Restricted Fund Balance	5,769,455	
0830 Committed Fund Balance	3,141,017	
0840 Assigned Fund Balance	366,211	
0850 Unassigned Fund Balance	3,465,153	
Total Fund Balances	\$12,741,836	
Total Liabilities, Deferred Inflows Of Resources And Fund Balances	\$18,263,309	

Amounts Expressed in Whole Dollars	<u>General Fund</u> <u>(10)</u>	<u>Student Sponsored</u> <u>Activity Fund</u> <u>(21)</u>	<u>Public Purpose Trust</u> <u>(27)</u>	<u>Other Compt Approved</u> <u>(28)</u>	<u>Athletic / Activity</u> <u>(29)</u>
Revenues					
6000 Revenue from Local Sources	24,021,153	58,298			
7000 Revenue from State Sources	9,344,927				
8000 Revenue from Federal Sources	809,043				
Total Revenues	\$34,175,123	\$58,298			
Expenditures					
1000 Instruction	19,444,502				
2000 Support Services	10,724,432				
3000 Operation of Non-Instructional Services	825,208	79,974			
4000 Facilities Acquisition, Construction and Improvement Services	105,480				
5110 Debt Service	2,690,121				
5130 Refund of Prior Year Revenues / Receipts					
Total Expenditures	\$33,789,743	\$79,974			
Excess (Deficiency) Of Revenues Over Expenditures	\$385,380	(\$21,676)			
Other Financing Sources (Uses)					
9110 Face Value of Bonds Issued					
9120 Proceeds from Refunding of Bonds	6,830,000				
9130 Bond Premiums					
9200 Proceeds from Extended-Term Financing	105,480				
9300 Interfund Transfers - IN	32,801				
9400 Sale of or Compensation for Loss of Fixed Assets	9,530				
9710 Transfers from Component Units					
9720 Transfers from Primary Governments					
9910 Other Financing Sources Not Listed in the 9000 Series					
9990 Insurance Recoveries					
5120 Debt Service – Refunded Bonds	6,600,000				
5150 Bond Discounts					
5200 Interfund Transfers – Out	364,691				
5300 Transfers Out to Component Units/Primary Governments					
Total Other Financing Sources (Uses)	\$13,120				

Amounts Expressed in Whole Dollars		<u>Capital Reserve (690.</u> <u>1850)</u> <u>(31)</u>	<u>Capital Reserve (1431)</u> <u>(32)</u>	<u>Other Capital Projects</u> <u>Fund</u> <u>(39)</u>	<u>Debt Service</u> <u>(40)</u>	<u>Permanent</u> <u>(90)</u>
Revenues						
6000	Revenue from Local Sources			478		
7000	Revenue from State Sources					
8000	Revenue from Federal Sources					
Total Revenues				\$478		
Expenditures						
1000	Instruction					
2000	Support Services			2,895,135		
3000	Operation of Non-Instructional Services					
4000	Facilities Acquisition, Construction and Improvement Services			64,971		
5110	Debt Service					
5130	Refund of Prior Year Revenues / Receipts					
Total Expenditures				\$2,960,106		
Excess (Deficiency) Of Revenues Over Expenditures				(\$2,959,628)		
Other Financing Sources (Uses)						
9110	Face Value of Bonds Issued			6,500,000		
9120	Proceeds from Refunding of Bonds					
9130	Bond Premiums			1,106,896		
9200	Proceeds from Extended-Term Financing					
9300	Interfund Transfers - IN			364,038		
9400	Sale of or Compensation for Loss of Fixed Assets					
9710	Transfers from Component Units					
9720	Transfers from Primary Governments					
9910	Other Financing Sources Not Listed in the 9000 Series					
9990	Insurance Recoveries					
5120	Debt Service – Refunded Bonds					
5150	Bond Discounts					
5200	Interfund Transfers – Out					
5300	Transfers Out to Component Units/Primary Governments					
Total Other Financing Sources (Uses)				\$7,970,934		

Amounts Expressed in Whole Dollars		<u>Total Governmental Funds</u>
Revenues		
6000	Revenue from Local Sources	24,079,929
7000	Revenue from State Sources	9,344,927
8000	Revenue from Federal Sources	809,043
Total Revenues		\$34,233,899
Expenditures		
1000	Instruction	19,444,502
2000	Support Services	13,619,567
3000	Operation of Non-Instructional Services	905,182
4000	Facilities Acquisition, Construction and Improvement Services	170,451
5110	Debt Service	2,690,121
5130	Refund of Prior Year Revenues / Receipts	
Total Expenditures		\$36,829,823
Excess (Deficiency) Of Revenues Over Expenditures		(\$2,595,924)
Other Financing Sources (Uses)		
9110	Face Value of Bonds Issued	6,500,000
9120	Proceeds from Refunding of Bonds	6,830,000
9130	Bond Premiums	1,106,896
9200	Proceeds from Extended-Term Financing	105,480
9300	Interfund Transfers - IN	396,839
9400	Sale of or Compensation for Loss of Fixed Assets	9,530
9710	Transfers from Component Units	
9720	Transfers from Primary Governments	
9910	Other Financing Sources Not Listed in the 9000 Series	
9990	Insurance Recoveries	
5120	Debt Service – Refunded Bonds	6,600,000
5150	Bond Discounts	
5200	Interfund Transfers – Out	364,691
5300	Transfers Out to Component Units/Primary Governments	
Total Other Financing Sources (Uses)		\$7,984,054

Amounts Expressed in Whole Dollars	<u>General Fund</u> <u>(10)</u>	<u>Student Sponsored</u> <u>Activity Fund</u> <u>(21)</u>	<u>Public Purpose Trust</u> <u>(27)</u>	<u>Other Compt Approved</u> <u>(28)</u>	<u>Athletic / Activity</u> <u>(29)</u>
Special And Extraordinary Items					
9920 Special Items – Gains					
9930 Extraordinary Items – Gains					
5520 Special Items – Losses					
5530 Extraordinary Items – Losses					
Net Change In Fund Balances	\$398,500	(\$21,676)			
Fund Balance					
0001 Fund Balance - Beginning of Fiscal Year	6,579,086	93,001			
Fund Balance - End Of Year	\$6,977,586	\$71,325			

Amounts Expressed in Whole Dollars		<u>Capital Reserve (690.</u> <u>1850)</u> <u>(31)</u>	<u>Capital Reserve (1431)</u> <u>(32)</u>	<u>Other Capital Projects</u> <u>Fund</u> <u>(39)</u>	<u>Debt Service</u> <u>(40)</u>	<u>Permanent</u> <u>(90)</u>
Special And Extraordinary Items						
9920	Special Items – Gains					
9930	Extraordinary Items – Gains					
5520	Special Items – Losses					
5530	Extraordinary Items – Losses					
Net Change In Fund Balances				\$5,011,306		
Fund Balance						
0001	Fund Balance - Beginning of Fiscal Year			681,617		
Fund Balance - End Of Year				\$5,692,923		

Amounts Expressed in Whole Dollars		<u>Total Governmental</u> <u>Funds</u>
Special And Extraordinary Items		
9920	Special Items – Gains	
9930	Extraordinary Items – Gains	
5520	Special Items – Losses	
5530	Extraordinary Items – Losses	
Net Change In Fund Balances		\$5,388,130
Fund Balance		
0001	Fund Balance - Beginning of Fiscal Year	7,353,704
Fund Balance - End Of Year		\$12,741,834

LEA : 114064003 Kutztown Area SD

Printed 11/18/2021 4:15:20 PM

Amounts Expressed in Whole Dollars		<u>Food Service</u> <u>(51)</u>	<u>Child Care</u> <u>Operations</u> <u>(52)</u>	<u>Other Enterprise</u> <u>(58)</u>	<u>TOTAL</u>	<u>Internal Service</u> <u>(60)</u>
Assets And Deferred Outflows Of Resources						
Current Assets						
0100	Cash and Cash Equivalents	606,368			606,368	
0110	Investments					
0130	Due From Other Funds					
0141	Due From Other Governments					
0142	State Revenue Receivable	689			689	
0143	Federal Revenue Receivable	16,930			16,930	
0146	Due from Primary Government					
0147	Due from Component Unit					
0150	Other Receivables					
0170	Inventories	26,609			26,609	
0180	Prepaid Expenses (Expenditures)					
0190	Other Current Assets					
Total Current Assets		\$650,596			\$650,596	
Noncurrent Assets						
0211	Land					
0212	Site Improvements (Net)					
0220	Buildings and Building Improvements (Net)					
0230	Machinery, Equipment and Furniture (Net)	154,024			154,024	
0250	Construction in Progress					
0260	Long Term Prepayments					
0290	Other Noncurrent Assets					
Total Noncurrent Assets		\$154,024			\$154,024	
0910	Deferred Outflows of Resources	125,241			125,241	
Total Assets And Deferred Outflows Of Resources		\$929,861			\$929,861	

LEA : 114064003 Kutztown Area SD

Printed 11/18/2021 4:15:20 PM

Amounts Expressed in Whole Dollars	<u>Food Service</u> <u>(51)</u>	<u>Child Care</u> <u>Operations</u> <u>(52)</u>	<u>Other Enterprise</u> <u>(58)</u>	<u>TOTAL</u>	<u>Internal Service</u> <u>(60)</u>
Liabilities And Deferred Inflows Of Resources And Net Position					
Current Liabilities					
0400 Due to Other Funds	364,893			364,893	
0411 Due to Other Governments					
0413 Due to Component Unit					
0420 Accounts Payable	768			768	
0430 Contracts Payable					
0440 Current Portion of Long-Term Debt					
0450 Short-Term Payables					
0461 Accrued Salaries and Benefits	1,326			1,326	
0462 Payroll Deductions and Withholding					
0480 Unearned Revenues	16,561			16,561	
0490 Other Current Liabilities					
Total Current Liabilities	\$383,548			\$383,548	
Noncurrent Liabilities					
0510 Bonds Payable					
0520 Extended-Term Financing Agreements Payable					
0530 Lease-Purchase Obligations					
0540 Accumulated Compensated Absences					
0550 Authority Lease Obligations					
0560 Other Post-Employment Benefits (OPEB)	138,828			138,828	
0570 Net Pension Liability	665,802			665,802	
0599 Other Noncurrent Liabilities					
Total Noncurrent Liabilities	\$804,630			\$804,630	
Total Liabilities	\$1,188,178			\$1,188,178	
0950 Deferred Inflows of Resources	122,273			122,273	
Net Position					
0791 Net Investment in Capital Assets	154,024			154,024	
0008 Restricted Net Position (0792 – 0798)					
0799 Unrestricted Net Position	(534,614)			(534,614)	
Total Net Position	(\$380,590)			(\$380,590)	
Total Liabilities And Deferred Inflows Of Resources And Net Position	\$929,861			\$929,861	

Amounts Expressed in Whole Dollars	<u>Food Service</u> <u>(51)</u>	<u>Child Care Operations</u> <u>(52)</u>	<u>Other Enterprise</u> <u>(58)</u>	<u>TOTAL</u>	<u>Internal Service</u> <u>(60)</u>
Operating Revenues					
6600 Food Service Revenue	29,559			29,559	
0071 Charges for Services					
0072 Other Operating Revenue					
Total Operating Revenues	\$29,559			\$29,559	
Operating Expenses					
100 Personnel Services – Salaries	179,548			179,548	
200 Personnel Services – Employee Benefits	119,508			119,508	
300 Purchased Professional and Technical Services	1,866			1,866	
400 Purchased Property Services	10,678			10,678	
500 Other Purchased Services	49,208			49,208	
600 Supplies	252,804			252,804	
740 Depreciation	13,683			13,683	
810 Dues and Fees	551			551	
880 Refunds of Prior Years' Receipts					
890 Miscellaneous Expenditures	903			903	
Total Operating Expenses	\$628,749			\$628,749	
Operating Income (Loss)	(\$599,190)			(\$599,190)	
Non Operating Revenues (Expenses)					
6500 Earnings on Investments	164			164	
6920 Contributions and Donations from Private Sources					
6930 Gains or Losses on Sale of Fixed Assets					
6991 Refunds of a Prior Year Expenditure					
7000 Revenue from State Sources	54,744			54,744	
8000 Revenue from Federal Sources	517,623			517,623	
9990 Insurance Recoveries					
820 Claims and Judgments Against the LEA					
830 Interest					
TOTAL Non Operating Revenues (Expenses)	\$572,531			\$572,531	
Income (Loss) Before Contributions And Transfers	(\$26,659)			(\$26,659)	

Amounts Expressed in Whole Dollars	<u>Food Service</u> <u>(51)</u>	<u>Child Care Operations</u> <u>(52)</u>	<u>Other Enterprise</u> <u>(58)</u>	<u>TOTAL</u>	<u>Internal Service</u> <u>(60)</u>
Contributions, Transfers, and Special and Extraordinary Items					
5200 Interfund Transfers – Out	32,801			32,801	
5300 Transfers Out to Component Units/Primary Governments					
5520 Special Items – Losses					
5530 Extraordinary Items – Losses					
9300 Interfund Transfers - IN	652			652	
9500 Capital Contributions					
9700 Transfers IN From Component Units/Primary Governments					
9920 Special Items – Gains					
9930 Extraordinary Items – Gains					
Change In Net Position	(\$58,808)			(\$58,808)	
0002 Net Position - Beginning of Fiscal Year	(321,780)			(321,780)	
0003 Accounting Changes / Residual Equity Transfers					
Net Position - End Of Year	(\$380,588)			(\$380,588)	

LEA : 114064003 Kutztown Area SD

Printed 11/18/2021 4:15:44 PM

Amounts Expressed in Whole Dollars	<u>Food Service</u> <u>(51)</u>	<u>Child Care Operations</u> <u>(52)</u>	<u>Other Enterprise</u> <u>(58)</u>	<u>TOTAL</u>	<u>Internal Service(60)</u>
Cash Flows From Operating Activities					
0011 Cash Receipts From Users	42,407			42,407	
0012 Cash Receipts From Assessments Made to Other Funds					
0013 Cash Receipts From Earnings on Investments					
0014 Cash Receipts From Other Operating Revenue					
0015 Cash Payments To Employees For Services	150,752			150,752	
0016 Cash Payments For Insurance Claims					
0017 Cash Payments To Suppliers For Goods and Services	261,891			261,891	
0018 Cash Payments For Other Operating Expenses					
Net Cash Provided By (Used For) Operating Activities	(\$370,236)			(\$370,236)	
Cash Flows From Non-Capital Financing Activities					
0021 Receipts From Local Sources - 6000					
0022 Receipts From State Sources - 7000	55,164			55,164	
0023 Receipts From Federal Sources -8000	481,102			481,102	
0024 Notes and Loans Received (Repaid)					
0025 Interest Paid on Notes/Loans - 5100-830					
0026 Operating Transfers In (Out)/Residual Equity Trans	652			652	
0027 Operating Transfers In (Out) Primary Government / Comp Unit	(32,801)			(32,801)	
0028 Receipts From Refund of Prior Year Expenditures - 6991					
0029 Special and Extraordinary Gains (losses)					
0030 Receipts from Insurance Recoveries -9990					
Net Cash Prov By (Used for) Non-Capital Financing Activities	\$504,117			\$504,117	
Cash Flows From Capital and Related Financing Activities					
0031 Payments For Fac Acq, Const, and Imp - 4000	(14,974)			(14,974)	
0032 Gain / (Loss) on Sale of Fixed Assets - 6930					
0033 Proceeds From Extended Term Financing - 9200					
0034 Principal Paid on Financing Agreements					
0035 Interest Paid on Financing Agreements - 5100-830					
0036 (Inc) Dec in Contributed Capital					
Net Cash Prov By (Used for) Capital and Related Financing Activities	(\$14,974)			(\$14,974)	
Cash Flows From Investing Activities					
0041 Earnings on Investments - 6500	164			164	
0042 Purchase of Inv Securities / Deposits to Inv Pools					
0043 Receipts From Investment Pool Withdrawals					
0044 Proceeds from Sale and Maturity of Inv Securities					

LEA : 114064003 Kutztown Area SD

Printed 11/18/2021 4:15:44 PM

0045 Loans Received (Paid)

Net Cash Prov By (Used for) Investing Activities	\$164	\$164
--	-------	-------

LEA : 114064003 Kutztown Area SD

Printed 11/18/2021 4:15:44 PM

	Food Service (51)	Child Care Operations (52)	Other Enterprise (58)	TOTAL	Internal Service (60)
Net Increase (Decrease) in Cash Flows	119,071			119,071	
0004 Cash and Cash Equivalents Beginning of Year	487,297			487,297	
Cash and Cash Equivalents at Year End	\$606,368			\$606,368	
Reconciliation of Operating Income (Loss) To Net Cash Provided by (Used For) Operating Activities					
0005 Operating Income (Loss) per REP	(599,190)			(599,190)	
Adjustments					
0051 Depreciation and Net Amortization	13,455			13,455	
0052 Provision for Uncollectible Accounts					
0053 Other Adjustments	48,212			48,212	
Effect of Changes in Assets, Liabilities, Deferred Outflows and Deferred Inflows					
0054 (Inc) Dec In Accounts Receivable (0120-0150)					
0055 Advances to Other Funds (0160)					
0056 (Inc) Dec in Inventories (0170)	6,377			6,377	
0057 (Inc) Dec in Prepaid Expenses (0180)					
0058 (Inc) Dec in Other Current or Noncurrent Assets					
0064 Deferred Outflows (0910)	(10,477)			(10,477)	
0059 Inc (Dec) in Accounts Payable (0400-0450)	(242)			(242)	
0060 Inc (Dec) in Accrued Salaries/Benefits (0461)	(1,598)			(1,598)	
0065 Inc (Dec) in Net Pension Liabilities (0570)	(16,612)			(16,612)	
0066 Inc (Dec) in Other Postemp Benefit Oblig (0560)	7,524			7,524	
0061 Inc (Dec) in Payroll Deductions/Withholding (0462)					
0062 Inc (Dec) in Unearned Revenue (0480)	12,848			12,848	
0063 Inc (Dec) in Other Current or Noncurrent Liabilities	169,275			169,275	
0067 Deferred Inflows (0950)	194			194	
Total Adjustments	\$228,956			\$228,956	
Cash Provided By (Used for) Total	(\$370,234)			(\$370,234)	

COMBINED STATEMENT OF CASH FLOWS
SCHEDULE OF NONCASH INVESTING, CAPITAL, AND FINANCING ACTIVITIES

Explanation of Transaction and Balance Sheet Effect	Amount
The District used \$48,212 of commodities from the US Dept of Agriculture	48,212
Total	\$48,212

	Revenue Reported In Current Year	Current Year Tax Accrual	Prior Year Tax Accrual	Taxes Collected In Current Year
Revenue from Local Sources				
6111 Current Real Estate Taxes	20,280,349.49			20,280,349.49
6112 Interim Real Estate Taxes	116,614.26			116,614.26
6113 Public Utility Realty Taxes	21,981.49			21,981.49
6114 Payments in Lieu of Current Taxes - State / Local	11,325.32			11,325.32
6120 Current Per Capita Taxes, Section 679	32,649.30			32,649.30
6141 Current Act 511 Per Capita Taxes	32,649.30			32,649.30
6143 Current Act 511 Local Services Taxes	32,281.05			32,281.05
6151 Current Act 511 Earned Income Taxes	1,670,766.50			1,670,766.50
6153 Current Act 511 Real Estate Transfer Taxes	419,822.56			419,822.56
6154 Current Act 511 Amusement Taxes	955.53			955.53
6411 Delinquent Real Estate Taxes	910,160.14			910,160.14
6420 Delinquent Per Capita Taxes, Section 679	4,969.25			4,969.25
6440 Delinquent Local Enabling Taxes - Flat Rate Assessments	4,969.25			4,969.25
6500 Earnings on Investments	7,968.68			
6700 Revenues from LEA Activities	19,002.99			
6832 Federal IDEA Revenue Received as Pass Through	253,453.24			
6837 Federal Cares Act Revenue Received as Pass Through	100,000.00			
6910 Rentals	29,166.81			
6920 Contributions and Donations from Private Sources	23,855.00			
6942 Summer School Tuition	400.00			
6949 Other Tuition from Patrons	15,691.51			
6999 Other Revenues Not Specified Above	32,121.63			
TOTAL Revenue from Local Sources	\$24,021,153.30			\$23,539,493.44

	Revenue Reported In Current Year			
<u>Revenue from State Sources</u>				
7111 Basic Education Funding-Formula	3,527,510.36			
7112 Basic Education Funding-Social Security	541,977.23			
7160 Tuition for Orphans Subsidy	128,599.32			
7220 Vocational Education	31,104.08			
7271 Special Education funds for School-Aged Pupils	944,793.83			
7311 Pupil Transportation Subsidy	740,902.28			
7312 Nonpublic and Charter School Pupil Transportation Subsidy	48,125.00			
7320 Rental and Sinking Fund Payments / Building Reimbursement Subsidy	219,286.64			
7330 Health Services (Medical, Dental, Nurse, Act 25)	25,593.09			
7340 State Property Tax Reduction Allocation	610,663.58			
7505 Ready to Learn Block Grant	140,805.00			
7506 PAsmart Grants	0.42			
7820 State Share of Retirement Contributions	2,385,566.13			
TOTAL Revenue from State Sources	\$9,344,926.96			

	Revenue Reported In Current Year			
<u>Revenue from Federal Sources</u>				
8514 NCLB, Title I - Improving the Academic Achievement of the Disadvantaged	287,867.73			
8515 NCLB, Title II - Preparing, Training and Recruiting High Quality Teachers and Principals	47,911.00			
8517 NCLB, Title IV - 21St Century Schools	20,812.11			
8741 Elementary and Secondary School Emergency Relief Fund (ESSER)	194,406.00			
8749 Other CARES Act Funding	151,910.99			
8810 School-Based Access Medicaid Reimbursement Program (SBAP) Reimbursements (Access)	100,000.00			
8820 Medical Assistance Reimbursement for Administrative Claiming (Quarterly) Program	6,135.28			
TOTAL Revenue from Federal Sources	\$809,043.11			

Revenue Reported In Current Year				
<u>Other Financing Sources</u>				
9120	Proceeds from Refunding of Bonds	6,830,000.00		
9290	Other Extended-Term Financing Proceeds	105,480.00		
9350	Enterprise Fund Transfers	32,801.19		
9400	Sale of or Compensation for Loss of Fixed Assets	9,530.00		
TOTAL Other Financing Sources		\$6,977,811.19		
TOTAL FROM ALL SOURCES		\$41,152,934.56		\$23,539,493.44

LEA : 114064003 Kutztown Area SD

Printed 11/18/2021 4:15:51 PM

	<u>General Fund (10)</u>	<u>Student Sponsored Activity Fund (21)</u>	<u>Public Purpose Trust (27)</u>	<u>Other Compt Approved (28)</u>	<u>Athletic / Activity (29)</u>	<u>Capital Reserve (690, 1850) (31)</u>
6000 Revenue from Local Sources						
6111 Current Real Estate Taxes	20,280,349.49					
6112 Interim Real Estate Taxes	116,614.26					
6113 Public Utility Realty Taxes	21,981.49					
6114 Payments in Lieu of Current Taxes - State / Local	11,325.32					
6120 Current Per Capita Taxes, Section 679	32,649.30					
6141 Current Act 511 Per Capita Taxes	32,649.30					
6143 Current Act 511 Local Services Taxes	32,281.05					
6151 Current Act 511 Earned Income Taxes	1,670,766.50					
6153 Current Act 511 Real Estate Transfer Taxes	419,822.56					
6154 Current Act 511 Amusement Taxes	955.53					
6411 Delinquent Real Estate Taxes	910,160.14					
6420 Delinquent Per Capita Taxes, Section 679	4,969.25					
6440 Delinquent Local Enabling Taxes - Flat Rate Assessments	4,969.25					
6500 Earnings on Investments	7,968.68					
6700 Revenues from LEA Activities	19,002.99	58,298.00				
6832 Federal IDEA Revenue Received as Pass Through	253,453.24					
6837 Federal Cares Act Revenue Received as Pass Through	100,000.00					
6910 Rentals	29,166.81					
6920 Contributions and Donations from Private Sources	23,855.00					
6942 Summer School Tuition	400.00					
6949 Other Tuition from Patrons	15,691.51					
6999 Other Revenues Not Specified Above	32,121.63					
6000 Total Revenue from Local Sources	\$24,021,153.30	\$58,298.00				
7000 Revenue from State Sources						
7111 Basic Education Funding-Formula	3,527,510.36					
7112 Basic Education Funding-Social Security	541,977.23					
7160 Tuition for Orphans Subsidy	128,599.32					
7220 Vocational Education	31,104.08					
7271 Special Education funds for School-Aged Pupils	944,793.83					
7311 Pupil Transportation Subsidy	740,902.28					
7312 Nonpublic and Charter School Pupil Transportation Subsidy	48,125.00					
7320 Rental and Sinking Fund Payments / Building Reimbursement Subsidy	219,286.64					
7330 Health Services (Medical, Dental, Nurse, Act 25)	25,593.09					
7340 State Property Tax Reduction Allocation	610,663.58					
7505 Ready to Learn Block Grant	140,805.00					

LEA : 114064003 Kutztown Area SD

Printed 11/18/2021 4:15:51 PM

	<u>Capital Reserve</u> <u>(1431) (32)</u>	<u>Other Capital</u> <u>Projects Fund (39)</u>	<u>Debt Service (40)</u>	<u>Permanent (90)</u>	<u>Total</u>
6000 Revenue from Local Sources					
6111 Current Real Estate Taxes					20,280,349.49
6112 Interim Real Estate Taxes					116,614.26
6113 Public Utility Realty Taxes					21,981.49
6114 Payments in Lieu of Current Taxes - State / Local					11,325.32
6120 Current Per Capita Taxes, Section 679					32,649.30
6141 Current Act 511 Per Capita Taxes					32,649.30
6143 Current Act 511 Local Services Taxes					32,281.05
6151 Current Act 511 Earned Income Taxes					1,670,766.50
6153 Current Act 511 Real Estate Transfer Taxes					419,822.56
6154 Current Act 511 Amusement Taxes					955.53
6411 Delinquent Real Estate Taxes					910,160.14
6420 Delinquent Per Capita Taxes, Section 679					4,969.25
6440 Delinquent Local Enabling Taxes - Flat Rate Assessments					4,969.25
6500 Earnings on Investments		478.21			8,446.89
6700 Revenues from LEA Activities					77,300.99
6832 Federal IDEA Revenue Received as Pass Through					253,453.24
6837 Federal Cares Act Revenue Received as Pass Through					100,000.00
6910 Rentals					29,166.81
6920 Contributions and Donations from Private Sources					23,855.00
6942 Summer School Tuition					400.00
6949 Other Tuition from Patrons					15,691.51
6999 Other Revenues Not Specified Above					32,121.63
6000 Total Revenue from Local Sources		\$478.21			\$24,079,929.51
7000 Revenue from State Sources					
7111 Basic Education Funding-Formula					3,527,510.36
7112 Basic Education Funding-Social Security					541,977.23
7160 Tuition for Orphans Subsidy					128,599.32
7220 Vocational Education					31,104.08
7271 Special Education funds for School-Aged Pupils					944,793.83
7311 Pupil Transportation Subsidy					740,902.28
7312 Nonpublic and Charter School Pupil Transportation Subsidy					48,125.00
7320 Rental and Sinking Fund Payments / Building Reimbursement Subsidy					219,286.64
7330 Health Services (Medical, Dental, Nurse, Act 25)					25,593.09
7340 State Property Tax Reduction Allocation					610,663.58
7505 Ready to Learn Block Grant					140,805.00

LEA : 114064003 Kutztown Area SD

Printed 11/18/2021 4:15:51 PM

	<u>General Fund (10)</u>	<u>Student Sponsored</u> <u>Activity Fund (21)</u>	<u>Public Purpose</u> <u>Trust (27)</u>	<u>Other Compt</u> <u>Approved (28)</u>	<u>Athletic / Activity</u> <u>(29)</u>	<u>Capital Reserve</u> <u>(690, 1850) (31)</u>
7000 Revenue from State Sources						
7506 PAsmart Grants	0.42					
7820 State Share of Retirement Contributions	2,385,566.13					
7000 Total Revenue from State Sources	\$9,344,926.96					
8000 Revenue from Federal Sources						
8514 NCLB, Title I - Improving the Academic Achievement of the Disadvantaged	287,867.73					
8515 NCLB, Title II - Preparing, Training and Recruiting High Quality Teachers and Principals	47,911.00					
8517 NCLB, Title IV - 21st Century Schools	20,812.11					
8741 Elementary and Secondary School Emergency Relief Fund (ESSER)	194,406.00					
8749 Other CARES Act Funding	151,910.99					
8810 School-Based Access Medicaid Reimbursement Program (SBAP) Reimbursements (Access)	100,000.00					
8820 Medical Assistance Reimbursement for Administrative Claiming (Quarterly) Program	6,135.28					
8000 Total Revenue from Federal Sources	\$809,043.11					
9000 Other Financing Sources						
9110 Face Value of Bonds Issued						
9120 Proceeds from Refunding of Bonds	6,830,000.00					
9130 Bond Premiums						
9290 Other Extended-Term Financing Proceeds	105,480.00					
9310 General Fund Transfers						
9350 Enterprise Fund Transfers	32,801.19					
9400 Sale of or Compensation for Loss of Fixed Assets	9,530.00					
9000 Total Other Financing Sources	\$6,977,811.19					
Total From All Sources	\$41,152,934.56	\$58,298.00				

LEA : 114064003 Kutztown Area SD

Printed 11/18/2021 4:15:51 PM

	<u>Capital Reserve</u> <u>(1431) (32)</u>	<u>Other Capital</u> <u>Projects Fund (39)</u>	<u>Debt Service (40)</u>	<u>Permanent (90)</u>	<u>Total</u>
7000 Revenue from State Sources					
7506 PAsmart Grants					0.42
7820 State Share of Retirement Contributions					2,385,566.13
7000 Total Revenue from State Sources					\$9,344,926.96
8000 Revenue from Federal Sources					
8514 NCLB, Title I - Improving the Academic Achievement of the Disadvantaged					287,867.73
8515 NCLB, Title II - Preparing, Training and Recruiting High Quality Teachers and Principals					47,911.00
8517 NCLB, Title IV - 21st Century Schools					20,812.11
8741 Elementary and Secondary School Emergency Relief Fund (ESSER)					194,406.00
8749 Other CARES Act Funding					151,910.99
8810 School-Based Access Medicaid Reimbursement Program (SBAP) Reimbursements (Access)					100,000.00
8820 Medical Assistance Reimbursement for Administrative Claiming (Quarterly) Program					6,135.28
8000 Total Revenue from Federal Sources					\$809,043.11
9000 Other Financing Sources					
9110 Face Value of Bonds Issued		6,500,000.00			6,500,000.00
9120 Proceeds from Refunding of Bonds					6,830,000.00
9130 Bond Premiums		1,106,896.00			1,106,896.00
9290 Other Extended-Term Financing Proceeds					105,480.00
9310 General Fund Transfers		364,038.00			364,038.00
9350 Enterprise Fund Transfers					32,801.19
9400 Sale of or Compensation for Loss of Fixed Assets					9,530.00
9000 Total Other Financing Sources		\$7,970,934.00			\$14,948,745.19
Total From All Sources		\$7,971,412.21			\$49,182,644.77

LEA : 114064003 Kutztown Area SD

Printed 11/18/2021 4:15:55 PM

	<u>General Fund (10)</u>	<u>Student Sponsored Activity Fund (21)</u>	<u>Public Purpose Trust (27)</u>	<u>Other Compt Approved (28)</u>	<u>Athletic / Activity (29)</u>	<u>Capital Reserve (690. 1850) (31)</u>
Revenue from Local Sources	24,021,153.30	58,298.00				
Revenue from State Sources	9,344,926.96					
Revenue from Federal Sources	809,043.11					
Other Financing Sources	6,977,811.19					
Total From All Sources	\$41,152,934.56	\$58,298.00				

LEA : 114064003 Kutztown Area SD

Printed 11/18/2021 4:15:55 PM

	<u>Capital Reserve (1431)</u> <u>(32)</u>	<u>Other Capital Projects</u> <u>Fund (39)</u>	<u>Debt Service (40)</u>	<u>Permanent (90)</u>	<u>Total</u>
Revenue from Local Sources		478.21			24,079,929.51
Revenue from State Sources					9,344,926.96
Revenue from Federal Sources					809,043.11
Other Financing Sources		7,970,934.00			14,948,745.19
Total From All Sources		\$7,971,412.21			\$49,182,644.77

LEA : 114064003 Kutztown Area SD

Printed 11/18/2021 4:16:00 PM

General Fund (10)

1000 Instruction	Total
100 <u>Personnel Services – Salaries</u>	
100 Personnel Services – Salaries	9,897,035.63
Total Personnel Services – Salaries	\$9,897,035.63
200 <u>Personnel Services – Employee Benefits</u>	
210 Group Insurance – Contracted Provider	1,810,694.88
220 Social Security Contributions	726,204.45
230 PSERS Retirement Contributions	3,338,330.73
250 Unemployment Compensation	2,331.19
260 Workers' Compensation	34,666.41
299 All Other Employee Benefits	112,994.92
Total Personnel Services – Employee Benefits	\$6,025,222.58
300 <u>Purchased Professional and Technical Services</u>	
322 Professional Educational Services – Ius	23,381.28
323 Professional Educational Services – Other Educational Agencies	5,056.95
329 Professional Educational Services – Other	281,183.09
390 Other Purchased Professional and Technical Services	7,483.31
Total Purchased Professional and Technical Services	\$317,104.63
400 <u>Purchased Property Services</u>	
430 Repairs and Maintenance Services	19,502.94
440 Rentals	18,280.44
Total Purchased Property Services	\$37,783.38
500 <u>Other Purchased Services</u>	
510 Student Transportation Services	9,373.87
561 Tuition To Other School Districts Within the State	173,837.75
562 Tuition To Pennsylvania Charter Schools	1,578,210.07
563 Tuition To Nonpublic Schools	77,819.00
564 Tuition To Career and Technology Centers	565,904.67
567 Tuition To Approved Private Schools (APS) and PA Chartered Schools for the Deaf and Blind	20,574.55
568 Tuition To Private Residential Rehabilitative Institutions (PRRI) [In-State] and Detention Centers	383.86
569 Tuition – Other	130,426.14
580 Travel	859.32
594 IU Payment By Withholding for Institutionalized Children's Programs – Special Classes	1,314.82
Total Other Purchased Services	\$2,558,704.05
600 <u>Supplies</u>	
610 General Supplies	296,758.08
640 Books and Periodicals	46,250.21
Total Supplies	\$343,008.29
700 <u>Property</u>	
752 Capital Equipment – Original and Additional	171,499.51
756 Capitalized Technology Equipment – Original	69,923.10
758 Capitalized Technology Software - Original	18,046.53
766 Capitalized Technology Equipment – Replacement	349.50
Total Property	\$259,818.64

LEA : 114064003 Kutztown Area SD

Printed 11/18/2021 4:16:00 PM

General Fund (10)	
1000 Instruction	<u>Total</u>
800 <u>Other Objects</u>	
810 Dues and Fees	825.00
820 Claims and Judgments Against the LEA	5,000.00
Total Other Objects	\$5,825.00
Total 1000 Instruction	\$19,444,502.20

LEA : 114064003 Kutztown Area SD

Printed 11/18/2021 4:16:00 PM

General Fund (10)

1100 Regular Programs – Elementary / Secondary

	Elementary	Secondary	Federal	Total
100 Personnel Services – Salaries				
100 Personnel Services – Salaries	3,421,965.51	3,774,352.70	351,093.90	7,547,412.11
Total Personnel Services – Salaries	\$3,421,965.51	\$3,774,352.70	\$351,093.90	\$7,547,412.11
200 Personnel Services – Employee Benefits				
210 Group Insurance – Contracted Provider	556,165.61	607,835.73	35,243.30	1,199,244.64
220 Social Security Contributions	251,721.79	279,400.99	26,310.11	557,432.89
230 PSERS Retirement Contributions	1,153,504.74	1,286,498.98	94,647.69	2,534,651.41
250 Unemployment Compensation	0.12	24.60		24.72
260 Workers' Compensation	12,264.67	13,484.92	687.26	26,436.85
299 All Other Employee Benefits	44,452.20	51,693.72		96,145.92
Total Personnel Services – Employee Benefits	\$2,018,109.13	\$2,238,938.94	\$156,888.36	\$4,413,936.43
300 Purchased Professional and Technical Services				
322 Professional Educational Services – Ius	4.50	2,921.03		2,925.53
323 Professional Educational Services – Other Educational Agencies		5,056.95		5,056.95
329 Professional Educational Services – Other	111,472.46	167,585.62		279,058.08
390 Other Purchased Professional and Technical Services	1,566.17	617.14		2,183.31
Total Purchased Professional and Technical Services	\$113,043.13	\$176,180.74		\$289,223.87
400 Purchased Property Services				
430 Repairs and Maintenance Services	8,539.00	10,963.94		19,502.94
440 Rentals	7,800.70	10,479.74		18,280.44
Total Purchased Property Services	\$16,339.70	\$21,443.68		\$37,783.38
500 Other Purchased Services				
510 Student Transportation Services	9,373.87			9,373.87
561 Tuition To Other School Districts Within the State	4.46	1,931.38		1,935.84
562 Tuition To Pennsylvania Charter Schools	549,233.11	469,068.79		1,018,301.90
568 Tuition To Private Residential Rehabilitative Institutions (PRRI) [In-State] and Detention Centers		383.86		383.86
569 Tuition – Other	654.05	129,772.09		130,426.14
580 Travel	158.70	50.00		208.70
Total Other Purchased Services	\$559,424.19	\$601,206.12		\$1,160,630.31
600 Supplies				
610 General Supplies	46,845.82	142,031.11	71,880.47	260,757.40
640 Books and Periodicals	30,673.37	7,287.21		37,960.58
Total Supplies	\$77,519.19	\$149,318.32	\$71,880.47	\$298,717.98
700 Property				
752 Capital Equipment – Original and Additional	11,082.51	52,662.18	104,812.00	168,556.69
756 Capitalized Technology Equipment – Original			69,923.10	69,923.10
758 Capitalized Technology Software - Original	4,156.39	13,890.14		18,046.53
766 Capitalized Technology Equipment – Replacement	1.75	347.75		349.50
Total Property	\$15,240.65	\$66,900.07	\$174,735.10	\$256,875.82
800 Other Objects				
810 Dues and Fees	4.12	820.88		825.00

LEA : 114064003 Kutztown Area SD

Printed 11/18/2021 4:16:00 PM

General Fund (10)

1100 Regular Programs – Elementary / Secondary

	<u>Elementary</u>	<u>Secondary</u>	<u>Federal</u>	<u>Total</u>
Total Other Objects	\$4.12	\$820.88		\$825.00
Total 1100 Regular Programs – Elementary / Secondary	\$6,221,645.62	\$7,029,161.45	\$754,597.83	\$14,005,404.90

LEA : 114064003 Kutztown Area SD

Printed 11/18/2021 4:16:00 PM

General Fund (10)

1110 Regular Programs

	Elementary	Secondary	Federal	Total
100 <u>Personnel Services – Salaries</u>				
100 Personnel Services – Salaries	3,421,965.51	3,774,352.70	154,873.00	7,351,191.21
Total Personnel Services – Salaries	\$3,421,965.51	\$3,774,352.70	\$154,873.00	\$7,351,191.21
200 <u>Personnel Services – Employee Benefits</u>				
210 Group Insurance – Contracted Provider	556,165.61	607,835.73		1,164,001.34
220 Social Security Contributions	251,721.79	279,400.99	11,638.15	542,760.93
230 PSERS Retirement Contributions	1,153,504.74	1,286,498.98	26,931.85	2,466,935.57
250 Unemployment Compensation	0.12	24.60		24.72
260 Workers' Compensation	12,264.67	13,484.92		25,749.59
299 All Other Employee Benefits	44,452.20	51,693.72		96,145.92
Total Personnel Services – Employee Benefits	\$2,018,109.13	\$2,238,938.94	\$38,570.00	\$4,295,618.07
300 <u>Purchased Professional and Technical Services</u>				
322 Professional Educational Services – Ius	4.50	2,921.03		2,925.53
323 Professional Educational Services – Other Educational Agencies		5,056.95		5,056.95
329 Professional Educational Services – Other	111,472.46	167,585.62		279,058.08
390 Other Purchased Professional and Technical Services	1,566.17	617.14		2,183.31
Total Purchased Professional and Technical Services	\$113,043.13	\$176,180.74		\$289,223.87
400 <u>Purchased Property Services</u>				
430 Repairs and Maintenance Services	8,539.00	10,963.94		19,502.94
440 Rentals	7,800.70	10,479.74		18,280.44
Total Purchased Property Services	\$16,339.70	\$21,443.68		\$37,783.38
500 <u>Other Purchased Services</u>				
510 Student Transportation Services	9,373.87			9,373.87
561 Tuition To Other School Districts Within the State	4.46	1,931.38		1,935.84
562 Tuition To Pennsylvania Charter Schools	549,233.11	469,068.79		1,018,301.90
568 Tuition To Private Residential Rehabilitative Institutions (PRRI) [In-State] and Detention Centers		383.86		383.86
569 Tuition – Other	654.05	129,772.09		130,426.14
580 Travel	158.70	50.00		208.70
Total Other Purchased Services	\$559,424.19	\$601,206.12		\$1,160,630.31
600 <u>Supplies</u>				
610 General Supplies	46,845.82	142,031.11	25,308.04	214,184.97
640 Books and Periodicals	30,673.37	7,287.21		37,960.58
Total Supplies	\$77,519.19	\$149,318.32	\$25,308.04	\$252,145.55
700 <u>Property</u>				
752 Capital Equipment – Original and Additional	11,082.51	52,662.18	104,812.00	168,556.69
756 Capitalized Technology Equipment – Original			69,923.10	69,923.10
758 Capitalized Technology Software - Original	4,156.39	13,890.14		18,046.53
766 Capitalized Technology Equipment – Replacement	1.75	347.75		349.50
Total Property	\$15,240.65	\$66,900.07	\$174,735.10	\$256,875.82
800 <u>Other Objects</u>				
810 Dues and Fees	4.12	820.88		825.00

LEA : 114064003 Kutztown Area SD

Printed 11/18/2021 4:16:00 PM

General Fund (10)

1110 Regular Programs

	<u>Elementary</u>	<u>Secondary</u>	<u>Federal</u>	<u>Total</u>
Total Other Objects	\$4.12	\$820.88		\$825.00
Total 1110 Regular Programs	\$6,221,645.62	\$7,029,161.45	\$393,486.14	\$13,644,293.21

LEA : 114064003 Kutztown Area SD

Printed 11/18/2021 4:16:00 PM

General Fund (10)

1190 Federally-Funded Regular Programs

	<u>Elementary</u>	<u>Secondary</u>	<u>Federal</u>	<u>Total</u>
100 <u>Personnel Services – Salaries</u>				
100 Personnel Services – Salaries			196,220.90	196,220.90
Total Personnel Services – Salaries			\$196,220.90	\$196,220.90
200 <u>Personnel Services – Employee Benefits</u>				
210 Group Insurance – Contracted Provider			35,243.30	35,243.30
220 Social Security Contributions			14,671.96	14,671.96
230 PSERS Retirement Contributions			67,715.84	67,715.84
260 Workers' Compensation			687.26	687.26
Total Personnel Services – Employee Benefits			\$118,318.36	\$118,318.36
600 <u>Supplies</u>				
610 General Supplies			46,572.43	46,572.43
Total Supplies			\$46,572.43	\$46,572.43
Total 1190 Federally-Funded Regular Programs			\$361,111.69	\$361,111.69

LEA : 114064003 Kutztown Area SD

Printed 11/18/2021 4:16:00 PM

General Fund (10)

1200 Special Programs – Elementary / Secondary	Elementary	Secondary	Federal	Total
100 Personnel Services – Salaries				
100 Personnel Services – Salaries	950,160.42	974,895.70	201,042.59	2,126,098.71
Total Personnel Services – Salaries	\$950,160.42	\$974,895.70	\$201,042.59	\$2,126,098.71
200 Personnel Services – Employee Benefits				
210 Group Insurance – Contracted Provider	275,379.75	327,749.29		603,129.04
220 Social Security Contributions	67,535.23	70,108.16	14,432.23	152,075.62
230 PSERS Retirement Contributions	321,514.09	374,469.87	34,597.46	730,581.42
250 Unemployment Compensation	2,306.47			2,306.47
260 Workers' Compensation	3,401.84	4,059.86		7,461.70
299 All Other Employee Benefits	10,131.60	6,717.40		16,849.00
Total Personnel Services – Employee Benefits	\$680,268.98	\$783,104.58	\$49,029.69	\$1,512,403.25
300 Purchased Professional and Technical Services				
322 Professional Educational Services – Ius	11,595.12	8,860.63		20,455.75
390 Other Purchased Professional and Technical Services	2,655.62	2,644.38		5,300.00
Total Purchased Professional and Technical Services	\$14,250.74	\$11,505.01		\$25,755.75
500 Other Purchased Services				
561 Tuition To Other School Districts Within the State	25,944.28	145,142.65		171,086.93
562 Tuition To Pennsylvania Charter Schools	271,617.44	288,290.73		559,908.17
563 Tuition To Nonpublic Schools	77,521.50	297.50		77,819.00
567 Tuition To Approved Private Schools (APS) and PA Chartered Schools for the Deaf and Blind		20,574.55		20,574.55
580 Travel		557.14		557.14
594 IU Payment By Withholding for Institutionalized Children's Programs – Special Classes		1,314.82		1,314.82
Total Other Purchased Services	\$375,083.22	\$456,177.39		\$831,260.61
600 Supplies				
610 General Supplies	6,926.29	5,837.31		12,763.60
640 Books and Periodicals	5,107.25	3,182.38		8,289.63
Total Supplies	\$12,033.54	\$9,019.69		\$21,053.23
700 Property				
752 Capital Equipment – Original and Additional	521.53	2,421.29		2,942.82
Total Property	\$521.53	\$2,421.29		\$2,942.82
800 Other Objects				
820 Claims and Judgments Against the LEA	25.00	4,975.00		5,000.00
Total Other Objects	\$25.00	\$4,975.00		\$5,000.00
Total 1200 Special Programs – Elementary / Secondary	\$2,032,343.43	\$2,242,098.66	\$250,072.28	\$4,524,514.37

LEA : 114064003 Kutztown Area SD

Printed 11/18/2021 4:16:00 PM

General Fund (10)

1210 Life Skills Support

	<u>Elementary</u>	<u>Secondary</u>	<u>Federal</u>	<u>Total</u>
100 <u>Personnel Services – Salaries</u>				
100 Personnel Services – Salaries	111,040.15	86,562.30	145,085.60	342,688.05
Total Personnel Services – Salaries	\$111,040.15	\$86,562.30	\$145,085.60	\$342,688.05
200 <u>Personnel Services – Employee Benefits</u>				
210 Group Insurance – Contracted Provider	55,317.68	37,535.38		92,853.06
220 Social Security Contributions	7,848.90	5,928.44	10,970.25	24,747.59
230 PSERS Retirement Contributions	37,657.61	50,556.90	25,034.49	113,249.00
260 Workers' Compensation	396.58	810.75		1,207.33
299 All Other Employee Benefits	600.00			600.00
Total Personnel Services – Employee Benefits	\$101,820.77	\$94,831.47	\$36,004.74	\$232,656.98
500 <u>Other Purchased Services</u>				
561 Tuition To Other School Districts Within the State	2,000.00	72,200.00		74,200.00
Total Other Purchased Services	\$2,000.00	\$72,200.00		\$74,200.00
600 <u>Supplies</u>				
610 General Supplies	2,025.33	4,731.57		6,756.90
640 Books and Periodicals	168.90	1,210.87		1,379.77
Total Supplies	\$2,194.23	\$5,942.44		\$8,136.67
700 <u>Property</u>				
752 Capital Equipment – Original and Additional	401.61	2,421.29		2,822.90
Total Property	\$401.61	\$2,421.29		\$2,822.90
Total 1210 Life Skills Support	\$217,456.76	\$261,957.50	\$181,090.34	\$660,504.60

LEA : 114064003 Kutztown Area SD

Printed 11/18/2021 4:16:00 PM

General Fund (10)

1220 Sensory Support	Elementary	Secondary	Federal	Total
100 Personnel Services – Salaries				
100 Personnel Services – Salaries	91,435.26	90,911.03		182,346.29
Total Personnel Services – Salaries	\$91,435.26	\$90,911.03		\$182,346.29
200 Personnel Services – Employee Benefits				
210 Group Insurance – Contracted Provider	4,127.71	4,126.21		8,253.92
220 Social Security Contributions	6,943.53	6,904.13		13,847.66
230 PSERS Retirement Contributions	30,019.05	29,853.41		59,872.46
260 Workers' Compensation	305.64	334.96		640.60
Total Personnel Services – Employee Benefits	\$41,395.93	\$41,218.71		\$82,614.64
300 Purchased Professional and Technical Services				
322 Professional Educational Services – Ius	3,219.12	8,860.63		12,079.75
390 Other Purchased Professional and Technical Services	2,655.62	2,644.38		5,300.00
Total Purchased Professional and Technical Services	\$5,874.74	\$11,505.01		\$17,379.75
600 Supplies				
610 General Supplies	768.18			768.18
Total Supplies	\$768.18			\$768.18
Total 1220 Sensory Support	\$139,474.11	\$143,634.75		\$283,108.86

LEA : 114064003 Kutztown Area SD

Printed 11/18/2021 4:16:00 PM

General Fund (10)

1230 Emotional Support

	<u>Elementary</u>	<u>Secondary</u>	<u>Federal</u>	<u>Total</u>
300 <u>Purchased Professional and Technical Services</u>				
322 Professional Educational Services – lus	8,376.00			8,376.00
Total Purchased Professional and Technical Services	\$8,376.00			\$8,376.00
500 <u>Other Purchased Services</u>				
563 Tuition To Nonpublic Schools	77,521.50	297.50		77,819.00
Total Other Purchased Services	\$77,521.50	\$297.50		\$77,819.00
Total 1230 Emotional Support	\$85,897.50	\$297.50		\$86,195.00

LEA : 114064003 Kutztown Area SD

Printed 11/18/2021 4:16:00 PM

General Fund (10)

1240 Academic Support

	Elementary	Secondary	Federal	Total
100 Personnel Services – Salaries				
100 Personnel Services – Salaries	747,685.01	797,422.37	55,956.99	1,601,064.37
Total Personnel Services – Salaries	\$747,685.01	\$797,422.37	\$55,956.99	\$1,601,064.37
200 Personnel Services – Employee Benefits				
210 Group Insurance – Contracted Provider	215,934.36	286,087.70		502,022.06
220 Social Security Contributions	52,742.80	57,275.59	3,461.98	113,480.37
230 PSERS Retirement Contributions	253,837.43	294,059.56	9,562.97	557,459.96
250 Unemployment Compensation	2,306.47			2,306.47
260 Workers' Compensation	2,699.62	2,914.15		5,613.77
299 All Other Employee Benefits	9,531.60	6,717.40		16,249.00
Total Personnel Services – Employee Benefits	\$537,052.28	\$647,054.40	\$13,024.95	\$1,197,131.63
500 Other Purchased Services				
561 Tuition To Other School Districts Within the State	23,944.28	72,942.65		96,886.93
562 Tuition To Pennsylvania Charter Schools	271,617.44	288,290.73		559,908.17
580 Travel		557.14		557.14
Total Other Purchased Services	\$295,561.72	\$361,790.52		\$657,352.24
600 Supplies				
610 General Supplies	4,132.78	1,105.74		5,238.52
640 Books and Periodicals	4,938.35	1,971.51		6,909.86
Total Supplies	\$9,071.13	\$3,077.25		\$12,148.38
700 Property				
752 Capital Equipment – Original and Additional	119.92			119.92
Total Property	\$119.92			\$119.92
800 Other Objects				
820 Claims and Judgments Against the LEA	25.00	4,975.00		5,000.00
Total Other Objects	\$25.00	\$4,975.00		\$5,000.00
Total 1240 Academic Support	\$1,589,515.06	\$1,814,319.54	\$68,981.94	\$3,472,816.54

LEA : 114064003 Kutztown Area SD

Printed 11/18/2021 4:16:00 PM

General Fund (10)

1241 Learning Support – Public	Elementary	Secondary	Federal	Total
100 Personnel Services – Salaries				
100 Personnel Services – Salaries	687,948.51	691,669.87	55,956.99	1,435,575.37
Total Personnel Services – Salaries	\$687,948.51	\$691,669.87	\$55,956.99	\$1,435,575.37
200 Personnel Services – Employee Benefits				
210 Group Insurance – Contracted Provider	199,297.19	281,299.91		480,597.10
220 Social Security Contributions	48,405.17	49,245.16	3,461.98	101,112.31
230 PSERS Retirement Contributions	233,222.46	257,564.34	9,562.97	500,349.77
250 Unemployment Compensation	2,306.47			2,306.47
260 Workers' Compensation	2,490.39	2,543.76		5,034.15
299 All Other Employee Benefits	3,090.00	382.00		3,472.00
Total Personnel Services – Employee Benefits	\$488,811.68	\$591,035.17	\$13,024.95	\$1,092,871.80
500 Other Purchased Services				
561 Tuition To Other School Districts Within the State	23,944.28	72,942.65		96,886.93
562 Tuition To Pennsylvania Charter Schools	271,617.44	288,290.73		559,908.17
580 Travel		557.14		557.14
Total Other Purchased Services	\$295,561.72	\$361,790.52		\$657,352.24
600 Supplies				
610 General Supplies	4,041.41	703.99		4,745.40
640 Books and Periodicals	4,938.35	1,971.51		6,909.86
Total Supplies	\$8,979.76	\$2,675.50		\$11,655.26
700 Property				
752 Capital Equipment – Original and Additional	119.92			119.92
Total Property	\$119.92			\$119.92
800 Other Objects				
820 Claims and Judgments Against the LEA	25.00	4,975.00		5,000.00
Total Other Objects	\$25.00	\$4,975.00		\$5,000.00
Total 1241 Learning Support – Public	\$1,481,446.59	\$1,652,146.06	\$68,981.94	\$3,202,574.59

LEA : 114064003 Kutztown Area SD

Printed 11/18/2021 4:16:00 PM

General Fund (10)

1243 Gifted Support

	<u>Elementary</u>	<u>Secondary</u>	<u>Federal</u>	<u>Total</u>
100 <u>Personnel Services – Salaries</u>				
100 Personnel Services – Salaries	59,736.50	105,752.50		165,489.00
Total Personnel Services – Salaries	\$59,736.50	\$105,752.50		\$165,489.00
200 <u>Personnel Services – Employee Benefits</u>				
210 Group Insurance – Contracted Provider	16,637.17	4,787.79		21,424.96
220 Social Security Contributions	4,337.63	8,030.43		12,368.06
230 PSERS Retirement Contributions	20,614.97	36,495.22		57,110.19
260 Workers' Compensation	209.23	370.39		579.62
299 All Other Employee Benefits	6,441.60	6,335.40		12,777.00
Total Personnel Services – Employee Benefits	\$48,240.60	\$56,019.23		\$104,259.83
600 <u>Supplies</u>				
610 General Supplies	91.37	401.75		493.12
Total Supplies	\$91.37	\$401.75		\$493.12
Total 1243 Gifted Support	\$108,068.47	\$162,173.48		\$270,241.95

LEA : 114064003 Kutztown Area SD

Printed 11/18/2021 4:16:00 PM

General Fund (10)

1290 Special Programs - Other Support

	<u>Elementary</u>	<u>Secondary</u>	<u>Federal</u>	<u>Total</u>
500 <u>Other Purchased Services</u>				
567 Tuition To Approved Private Schools (APS) and PA Chartered Schools for the Deaf and Blind		20,574.55		20,574.55
594 IU Payment By Withholding for Institutionalized Children's Programs – Special Classes		1,314.82		1,314.82
Total Other Purchased Services		\$21,889.37		\$21,889.37
Total 1290 Special Programs - Other Support		\$21,889.37		\$21,889.37

LEA : 114064003 Kutztown Area SD

Printed 11/18/2021 4:16:00 PM

General Fund (10)

1300 Vocational Education

	<u>Elementary</u>	<u>Secondary</u>	<u>Federal</u>	<u>Total</u>
100 <u>Personnel Services – Salaries</u>				
100 Personnel Services – Salaries		201,234.56		201,234.56
Total Personnel Services – Salaries		\$201,234.56		\$201,234.56
200 <u>Personnel Services – Employee Benefits</u>				
210 Group Insurance – Contracted Provider		8,321.20		8,321.20
220 Social Security Contributions		14,992.11		14,992.11
230 PSERS Retirement Contributions		66,390.73		66,390.73
260 Workers' Compensation		704.83		704.83
Total Personnel Services – Employee Benefits		\$90,408.87		\$90,408.87
500 <u>Other Purchased Services</u>				
564 Tuition To Career and Technology Centers		565,904.67		565,904.67
580 Travel		93.48		93.48
Total Other Purchased Services		\$565,998.15		\$565,998.15
600 <u>Supplies</u>				
610 General Supplies		15,305.51	2,649.95	17,955.46
Total Supplies		\$15,305.51	\$2,649.95	\$17,955.46
Total 1300 Vocational Education		\$872,947.09	\$2,649.95	\$875,597.04

LEA : 114064003 Kutztown Area SD

Printed 11/18/2021 4:16:00 PM

General Fund (10)

1400 Other Instructional Programs – Elementary / Secondary	<u>Elementary</u>	<u>Secondary</u>	<u>Federal</u>	<u>Total</u>
100 <u>Personnel Services – Salaries</u>				
100 Personnel Services – Salaries	7,027.56	3,218.94	12,043.75	22,290.25
Total Personnel Services – Salaries	\$7,027.56	\$3,218.94	\$12,043.75	\$22,290.25
200 <u>Personnel Services – Employee Benefits</u>				
220 Social Security Contributions	536.14	246.24	921.45	1,703.83
230 PSERS Retirement Contributions	3,340.02	1,688.41	1,678.74	6,707.17
260 Workers’ Compensation	63.03			63.03
Total Personnel Services – Employee Benefits	\$3,939.19	\$1,934.65	\$2,600.19	\$8,474.03
500 <u>Other Purchased Services</u>				
561 Tuition To Other School Districts Within the State		814.98		814.98
Total Other Purchased Services		\$814.98		\$814.98
600 <u>Supplies</u>				
610 General Supplies			5,281.62	5,281.62
Total Supplies			\$5,281.62	\$5,281.62
Total 1400 Other Instructional Programs – Elementary / Secondary	\$10,966.75	\$5,968.57	\$19,925.56	\$36,860.88

LEA : 114064003 Kutztown Area SD

Printed 11/18/2021 4:16:00 PM

General Fund (10)

1420 Summer School

	<u>Elementary</u>	<u>Secondary</u>	<u>Federal</u>	<u>Total</u>
100 <u>Personnel Services – Salaries</u>				
100 Personnel Services – Salaries	7,027.56	3,218.94	12,043.75	22,290.25
Total Personnel Services – Salaries	\$7,027.56	\$3,218.94	\$12,043.75	\$22,290.25
200 <u>Personnel Services – Employee Benefits</u>				
220 Social Security Contributions	536.14	246.24	921.45	1,703.83
230 PSERS Retirement Contributions	3,340.02	1,688.41	1,678.74	6,707.17
260 Workers’ Compensation	63.03			63.03
Total Personnel Services – Employee Benefits	\$3,939.19	\$1,934.65	\$2,600.19	\$8,474.03
600 <u>Supplies</u>				
610 General Supplies			5,281.62	5,281.62
Total Supplies			\$5,281.62	\$5,281.62
Total 1420 Summer School	\$10,966.75	\$5,153.59	\$19,925.56	\$36,045.90

LEA : 114064003 Kutztown Area SD

Printed 11/18/2021 4:16:00 PM

General Fund (10)

1440 Alternative Regular Education Programs

<u>Elementary</u>	<u>Secondary</u>	<u>Federal</u>	<u>Total</u>
-------------------	------------------	----------------	--------------

500 Other Purchased Services

561 Tuition To Other School Districts Within the State	814.98		814.98
--	--------	--	--------

Total Other Purchased Services	\$814.98		\$814.98
---------------------------------------	-----------------	--	-----------------

Total 1440 Alternative Regular Education Programs	\$814.98		\$814.98
--	-----------------	--	-----------------

LEA : 114064003 Kutztown Area SD

Printed 11/18/2021 4:16:00 PM

General Fund (10)

1441 Adjudicated / Court-Placed Programs

Elementary

Secondary

Federal

Total

500 Other Purchased Services

561 Tuition To Other School Districts Within the State

814.98

814.98

Total Other Purchased Services

\$814.98

\$814.98

Total 1441 Adjudicated / Court-Placed Programs

\$814.98

\$814.98

LEA : 114064003 Kutztown Area SD

Printed 11/18/2021 4:16:00 PM

General Fund (10)

1600 Adult Education Programs	<u>Elementary</u>	<u>Secondary</u>	<u>Federal</u>	<u>Total</u>
300 <u>Purchased Professional and Technical Services</u>				
329 Professional Educational Services – Other				2,125.01
Total Purchased Professional and Technical Services				\$2,125.01
Total 1600 Adult Education Programs				\$2,125.01

LEA : 114064003 Kutztown Area SD

Printed 11/18/2021 4:16:07 PM

General Fund (10)

2000 Support Services

	Total
100 Personnel Services – Salaries	
100 Personnel Services – Salaries	4,055,782.81
Total Personnel Services – Salaries	\$4,055,782.81
200 Personnel Services – Employee Benefits	
210 Group Insurance – Contracted Provider	966,714.03
220 Social Security Contributions	298,758.63
230 PSERS Retirement Contributions	1,330,684.85
250 Unemployment Compensation	225.74
260 Workers' Compensation	14,050.44
299 All Other Employee Benefits	48,995.83
Total Personnel Services – Employee Benefits	\$2,659,429.52
300 Purchased Professional and Technical Services	
310 Official / Administrative Services	34,576.07
323 Professional Educational Services – Other Educational Agencies	6,498.76
329 Professional Educational Services – Other	69,387.38
330 Other Professional Services	235,660.35
340 Technical Services	165,475.67
350 Security / Safety Services	15,633.66
390 Other Purchased Professional and Technical Services	19,321.67
Total Purchased Professional and Technical Services	\$546,553.56
400 Purchased Property Services	
410 Cleaning Services	203,451.72
420 Utility Services	43,769.65
430 Repairs and Maintenance Services	351,922.12
440 Rentals	6,674.56
Total Purchased Property Services	\$605,818.05
500 Other Purchased Services	
513 Contracted Carriers	923,853.38
519 Student Transportation Services From Other Sources	184,810.76
520 Insurance – General	3,243.25
521 Fire Insurance	85,084.00
522 Automotive Liability Insurance	12,627.00
523 General Property and Liability Insurance	13,589.00
530 Communications	90,533.11
549 Other Advertising/Public Relations	2,922.89
580 Travel	14,992.84
595 IU Payments By Withholding	26,734.60
599 Other Miscellaneous Purchased Services	17,923.60
Total Other Purchased Services	\$1,376,314.43
600 Supplies	
610 General Supplies	398,191.25
620 Energy	590,625.64
630 Food	5,246.79
640 Books and Periodicals	56,427.03

LEA : 114064003 Kutztown Area SD

Printed 11/18/2021 4:16:07 PM

General Fund (10)

2000 Support Services

Total

600 <u>Supplies</u>	
650 Supplies & Fees – Technology Related	105,929.59
Total Supplies	\$1,156,420.30
700 <u>Property</u>	
752 Capital Equipment – Original and Additional	52,212.94
758 Capitalized Technology Software - Original	10,540.94
762 Capitalized Equipment - Replacement	41,542.80
Total Property	\$104,296.68
800 <u>Other Objects</u>	
810 Dues and Fees	30,163.53
890 Miscellaneous Expenditures	189,653.00
Total Other Objects	\$219,816.53
Total 2000 Support Services	\$10,724,431.88

LEA : 114064003 Kutztown Area SD

Printed 11/18/2021 4:16:07 PM

General Fund (10)

2100 Support Services – Students	Elementary	Secondary	Federal	Total
100 <u>Personnel Services – Salaries</u>				
100 Personnel Services – Salaries	235,033.07	469,100.01		704,133.08
Total Personnel Services – Salaries	\$235,033.07	\$469,100.01		\$704,133.08
200 <u>Personnel Services – Employee Benefits</u>				
210 Group Insurance – Contracted Provider	44,370.38	49,694.48		94,064.86
220 Social Security Contributions	17,232.41	34,955.90		52,188.31
230 PSERS Retirement Contributions	79,092.90	159,222.62		238,315.52
260 Workers' Compensation	807.67	1,655.64		2,463.31
299 All Other Employee Benefits	6,664.00	6,200.00		12,864.00
Total Personnel Services – Employee Benefits	\$148,167.36	\$251,728.64		\$399,896.00
300 <u>Purchased Professional and Technical Services</u>				
330 Other Professional Services	17,098.06	34,593.04		51,691.10
Total Purchased Professional and Technical Services	\$17,098.06	\$34,593.04		\$51,691.10
500 <u>Other Purchased Services</u>				
580 Travel	1.43	334.81		336.24
Total Other Purchased Services	\$1.43	\$334.81		\$336.24
600 <u>Supplies</u>				
610 General Supplies	719.18	5,724.16		6,443.34
Total Supplies	\$719.18	\$5,724.16		\$6,443.34
Total 2100 Support Services – Students	\$401,019.10	\$761,480.66		\$1,162,499.76

LEA : 114064003 Kutztown Area SD

Printed 11/18/2021 4:16:07 PM

General Fund (10)

2120 Guidance Services	Elementary	Secondary	Federal	Total
100 <u>Personnel Services – Salaries</u>				
100 Personnel Services – Salaries	189,677.79	320,054.38		509,732.17
Total Personnel Services – Salaries	\$189,677.79	\$320,054.38		\$509,732.17
200 <u>Personnel Services – Employee Benefits</u>				
210 Group Insurance – Contracted Provider	44,250.38	49,574.78		93,825.16
220 Social Security Contributions	13,762.75	24,021.01		37,783.76
230 PSERS Retirement Contributions	64,971.03	110,373.59		175,344.62
260 Workers' Compensation	664.34	1,118.08		1,782.42
299 All Other Employee Benefits	6,664.00	6,200.00		12,864.00
Total Personnel Services – Employee Benefits	\$130,312.50	\$191,287.46		\$321,599.96
500 <u>Other Purchased Services</u>				
580 Travel		50.00		50.00
Total Other Purchased Services		\$50.00		\$50.00
600 <u>Supplies</u>				
610 General Supplies	703.63	2,629.97		3,333.60
Total Supplies	\$703.63	\$2,629.97		\$3,333.60
Total 2120 Guidance Services	\$320,693.92	\$514,021.81		\$834,715.73

LEA : 114064003 Kutztown Area SD

Printed 11/18/2021 4:16:07 PM

General Fund (10)

2140 Psychological Services	Elementary	Secondary	Federal	Total
100 <u>Personnel Services – Salaries</u>				
100 Personnel Services – Salaries	45,355.28	52,265.03		97,620.31
Total Personnel Services – Salaries	\$45,355.28	\$52,265.03		\$97,620.31
200 <u>Personnel Services – Employee Benefits</u>				
210 Group Insurance – Contracted Provider	120.00	119.70		239.70
220 Social Security Contributions	3,469.66	3,998.27		7,467.93
230 PSERS Retirement Contributions	14,121.87	16,511.50		30,633.37
260 Workers' Compensation	143.33	198.59		341.92
Total Personnel Services – Employee Benefits	\$17,854.86	\$20,828.06		\$38,682.92
300 <u>Purchased Professional and Technical Services</u>				
330 Other Professional Services	17,098.06	34,593.04		51,691.10
Total Purchased Professional and Technical Services	\$17,098.06	\$34,593.04		\$51,691.10
500 <u>Other Purchased Services</u>				
580 Travel	1.43	284.81		286.24
Total Other Purchased Services	\$1.43	\$284.81		\$286.24
600 <u>Supplies</u>				
610 General Supplies	15.55	3,094.19		3,109.74
Total Supplies	\$15.55	\$3,094.19		\$3,109.74
Total 2140 Psychological Services	\$80,325.18	\$111,065.13		\$191,390.31

LEA : 114064003 Kutztown Area SD

Printed 11/18/2021 4:16:07 PM

General Fund (10)

2190 Other Student Services	<u>Elementary</u>	<u>Secondary</u>	<u>Federal</u>	<u>Total</u>
100 <u>Personnel Services – Salaries</u>				
100 Personnel Services – Salaries		96,780.60		96,780.60
Total Personnel Services – Salaries		\$96,780.60		\$96,780.60
200 <u>Personnel Services – Employee Benefits</u>				
220 Social Security Contributions		6,936.62		6,936.62
230 PSERS Retirement Contributions		32,337.53		32,337.53
260 Workers’ Compensation		338.97		338.97
Total Personnel Services – Employee Benefits		\$39,613.12		\$39,613.12
Total 2190 Other Student Services		\$136,393.72		\$136,393.72

LEA : 114064003 Kutztown Area SD

Printed 11/18/2021 4:16:07 PM

General Fund (10)

2200 Support Services – Instructional Staff	Elementary	Secondary	Federal	Total
100 Personnel Services – Salaries				
100 Personnel Services – Salaries	107,366.46	691,332.34		798,698.80
Total Personnel Services – Salaries	\$107,366.46	\$691,332.34		\$798,698.80
200 Personnel Services – Employee Benefits				
210 Group Insurance – Contracted Provider	11,605.77	134,680.23		146,286.00
220 Social Security Contributions	8,105.89	51,345.77		59,451.66
230 PSERS Retirement Contributions	37,042.63	231,411.51		268,454.14
250 Unemployment Compensation	5.40	1,073.60		1,079.00
260 Workers' Compensation	379.16	2,408.93		2,788.09
299 All Other Employee Benefits	728.04	1,100.00		1,828.04
Total Personnel Services – Employee Benefits	\$57,866.89	\$422,020.04		\$479,886.93
300 Purchased Professional and Technical Services				
323 Professional Educational Services – Other Educational Agencies	32.49	6,466.27		6,498.76
329 Professional Educational Services – Other	77.73	17,932.72	51,376.93	69,387.38
340 Technical Services	3,106.95	116,000.00		119,106.95
390 Other Purchased Professional and Technical Services	84.24	16,763.58		16,847.82
Total Purchased Professional and Technical Services	\$3,301.41	\$157,162.57	\$51,376.93	\$211,840.91
400 Purchased Property Services				
430 Repairs and Maintenance Services	27.50	5,471.69	963.00	6,462.19
Total Purchased Property Services	\$27.50	\$5,471.69	\$963.00	\$6,462.19
500 Other Purchased Services				
530 Communications	235.24	46,812.37		47,047.61
580 Travel	107.08	11,748.06		11,855.14
Total Other Purchased Services	\$342.32	\$58,560.43		\$58,902.75
600 Supplies				
610 General Supplies	1,524.39	29,266.41	69,468.82	100,259.62
630 Food	1.05	208.46		209.51
640 Books and Periodicals	5,093.49	44,520.03	6,203.95	55,817.47
650 Supplies & Fees – Technology Related	529.65	105,399.94		105,929.59
Total Supplies	\$7,148.58	\$179,394.84	\$75,672.77	\$262,216.19
700 Property				
752 Capital Equipment – Original and Additional	7,927.43	10,107.22		18,034.65
758 Capitalized Technology Software - Original	52.70	10,488.24		10,540.94
Total Property	\$7,980.13	\$20,595.46		\$28,575.59
800 Other Objects				
810 Dues and Fees	4.99	993.01		998.00
Total Other Objects	\$4.99	\$993.01		\$998.00
Total 2200 Support Services – Instructional Staff	\$184,038.28	\$1,535,530.38	\$128,012.70	\$1,847,581.36

LEA : 114064003 Kutztown Area SD

Printed 11/18/2021 4:16:07 PM

General Fund (10)

2240 Computer-Assisted Instruction Support Services	Elementary	Secondary	Federal	Total
100 <u>Personnel Services – Salaries</u>				
100 Personnel Services – Salaries	575.76	292,271.73		292,847.49
Total Personnel Services – Salaries	\$575.76	\$292,271.73		\$292,847.49
200 <u>Personnel Services – Employee Benefits</u>				
210 Group Insurance – Contracted Provider	245.37	48,828.69		49,074.06
220 Social Security Contributions	42.46	21,769.51		21,811.97
230 PSERS Retirement Contributions	190.02	93,898.66		94,088.68
250 Unemployment Compensation	5.40	1,073.60		1,079.00
260 Workers' Compensation	5.11	1,015.91		1,021.02
299 All Other Employee Benefits	545.19			545.19
Total Personnel Services – Employee Benefits	\$1,033.55	\$166,586.37		\$167,619.92
300 <u>Purchased Professional and Technical Services</u>				
329 Professional Educational Services – Other	77.73	15,468.72		15,546.45
340 Technical Services		116,000.00		116,000.00
Total Purchased Professional and Technical Services	\$77.73	\$131,468.72		\$131,546.45
400 <u>Purchased Property Services</u>				
430 Repairs and Maintenance Services	27.50	5,471.69	963.00	6,462.19
Total Purchased Property Services	\$27.50	\$5,471.69	\$963.00	\$6,462.19
500 <u>Other Purchased Services</u>				
530 Communications	235.24	46,812.37		47,047.61
580 Travel	2.64	526.56		529.20
Total Other Purchased Services	\$237.88	\$47,338.93		\$47,576.81
600 <u>Supplies</u>				
610 General Supplies	5.04	1,003.11	200.00	1,208.15
650 Supplies & Fees – Technology Related	529.65	105,399.94		105,929.59
Total Supplies	\$534.69	\$106,403.05	\$200.00	\$107,137.74
700 <u>Property</u>				
752 Capital Equipment – Original and Additional	7,927.43	10,107.22		18,034.65
758 Capitalized Technology Software - Original	52.70	10,488.24		10,540.94
Total Property	\$7,980.13	\$20,595.46		\$28,575.59
800 <u>Other Objects</u>				
810 Dues and Fees	2.25	447.75		450.00
Total Other Objects	\$2.25	\$447.75		\$450.00
Total 2240 Computer-Assisted Instruction Support Services	\$10,469.49	\$770,583.70	\$1,163.00	\$782,216.19

LEA : 114064003 Kutztown Area SD

Printed 11/18/2021 4:16:07 PM

General Fund (10)

2250 School Library Services	Elementary	Secondary	Federal	Total
100 <u>Personnel Services – Salaries</u>				
100 Personnel Services – Salaries	105,764.77	192,205.89		297,970.66
Total Personnel Services – Salaries	\$105,764.77	\$192,205.89		\$297,970.66
200 <u>Personnel Services – Employee Benefits</u>				
210 Group Insurance – Contracted Provider	11,009.65	16,053.62		27,063.27
220 Social Security Contributions	7,988.73	14,504.33		22,493.06
230 PSERS Retirement Contributions	36,499.40	66,295.12		102,794.52
260 Workers' Compensation	370.43	673.21		1,043.64
299 All Other Employee Benefits	182.85			182.85
Total Personnel Services – Employee Benefits	\$56,051.06	\$97,526.28		\$153,577.34
500 <u>Other Purchased Services</u>				
580 Travel	48.03			48.03
Total Other Purchased Services	\$48.03			\$48.03
600 <u>Supplies</u>				
610 General Supplies	1,382.65	1,058.32		2,440.97
640 Books and Periodicals	5,030.13	31,911.70		36,941.83
Total Supplies	\$6,412.78	\$32,970.02		\$39,382.80
Total 2250 School Library Services	\$168,276.64	\$322,702.19		\$490,978.83

LEA : 114064003 Kutztown Area SD

Printed 11/18/2021 4:16:07 PM

General Fund (10)

2260 Instruction and Curriculum Development Services	Elementary	Secondary	Federal	Total
100 Personnel Services – Salaries				
100 Personnel Services – Salaries	1,025.93	206,854.72		207,880.65
Total Personnel Services – Salaries	\$1,025.93	\$206,854.72		\$207,880.65
200 Personnel Services – Employee Benefits				
210 Group Insurance – Contracted Provider	350.75	69,797.92		70,148.67
220 Social Security Contributions	74.70	15,071.93		15,146.63
230 PSERS Retirement Contributions	353.21	71,217.73		71,570.94
260 Workers' Compensation	3.62	719.81		723.43
299 All Other Employee Benefits		1,100.00		1,100.00
Total Personnel Services – Employee Benefits	\$782.28	\$157,907.39		\$158,689.67
300 Purchased Professional and Technical Services				
323 Professional Educational Services – Other Educational Agencies	22.83	4,543.43		4,566.26
329 Professional Educational Services – Other		50.00		50.00
340 Technical Services	3,106.95			3,106.95
390 Other Purchased Professional and Technical Services	84.24	16,763.58		16,847.82
Total Purchased Professional and Technical Services	\$3,214.02	\$21,357.01		\$24,571.03
500 Other Purchased Services				
580 Travel	26.85	5,340.96		5,367.81
Total Other Purchased Services	\$26.85	\$5,340.96		\$5,367.81
600 Supplies				
610 General Supplies	133.83	26,633.62	69,268.82	96,036.27
630 Food	0.31	61.65		61.96
640 Books and Periodicals	57.31	11,404.35	6,203.95	17,665.61
Total Supplies	\$191.45	\$38,099.62	\$75,472.77	\$113,763.84
800 Other Objects				
810 Dues and Fees	2.74	545.26		548.00
Total Other Objects	\$2.74	\$545.26		\$548.00
Total 2260 Instruction and Curriculum Development Services	\$5,243.27	\$430,104.96	\$75,472.77	\$510,821.00

LEA : 114064003 Kutztown Area SD

Printed 11/18/2021 4:16:07 PM

General Fund (10)

2270 Instructional Staff Professional Development Services	<u>Elementary</u>	<u>Secondary</u>	<u>Federal</u>	<u>Total</u>
300 <u>Purchased Professional and Technical Services</u>				
323 Professional Educational Services – Other Educational Agencies	9.66	1,922.84		1,932.50
329 Professional Educational Services – Other		2,414.00	51,376.93	53,790.93
Total Purchased Professional and Technical Services	\$9.66	\$4,336.84	\$51,376.93	\$55,723.43
500 <u>Other Purchased Services</u>				
580 Travel	29.56	5,880.54		5,910.10
Total Other Purchased Services	\$29.56	\$5,880.54		\$5,910.10
600 <u>Supplies</u>				
610 General Supplies	2.87	571.36		574.23
630 Food	0.74	146.81		147.55
640 Books and Periodicals	6.05	1,203.98		1,210.03
Total Supplies	\$9.66	\$1,922.15		\$1,931.81
Total 2270 Instructional Staff Professional Development Services	\$48.88	\$12,139.53	\$51,376.93	\$63,565.34

LEA : 114064003 Kutztown Area SD

Printed 11/18/2021 4:16:07 PM

General Fund (10)

2300 Support Services – Administration	Elementary	Secondary	Federal	Total
100 Personnel Services – Salaries				
100 Personnel Services – Salaries	295,566.70	444,825.93		1,145,176.22
Total Personnel Services – Salaries	\$295,566.70	\$444,825.93		\$1,145,176.22
200 Personnel Services – Employee Benefits				
210 Group Insurance – Contracted Provider	96,158.95	61,399.11		237,841.21
220 Social Security Contributions	21,365.74	32,533.61		82,219.16
230 PSERS Retirement Contributions	99,784.97	142,394.77		370,801.89
260 Workers' Compensation	1,034.71	1,456.26		3,908.73
299 All Other Employee Benefits	12,703.00	7,222.00		22,767.03
Total Personnel Services – Employee Benefits	\$231,047.37	\$245,005.75		\$717,538.02
300 Purchased Professional and Technical Services				
310 Official / Administrative Services				34,576.07
330 Other Professional Services				49,463.83
340 Technical Services				8,472.40
Total Purchased Professional and Technical Services				\$92,512.30
500 Other Purchased Services				
520 Insurance – General				3,243.25
530 Communications	9,808.08			9,808.08
549 Other Advertising/Public Relations				2,922.89
580 Travel		172.94		1,009.14
599 Other Miscellaneous Purchased Services	3,044.58	1,861.60		4,906.18
Total Other Purchased Services	\$12,852.66	\$2,034.54		\$21,889.54
600 Supplies				
610 General Supplies	1,221.30	10,951.73		33,075.27
630 Food	170.08	2,545.32		5,037.28
640 Books and Periodicals				609.56
Total Supplies	\$1,391.38	\$13,497.05		\$38,722.11
700 Property				
752 Capital Equipment – Original and Additional	350.08	3,318.50		4,205.55
Total Property	\$350.08	\$3,318.50		\$4,205.55
800 Other Objects				
810 Dues and Fees	568.20	4,108.30		27,272.58
890 Miscellaneous Expenditures				189,653.00
Total Other Objects	\$568.20	\$4,108.30		\$216,925.58
Total 2300 Support Services – Administration	\$541,776.39	\$712,790.07		\$2,236,969.32

LEA : 114064003 Kutztown Area SD

Printed 11/18/2021 4:16:07 PM

General Fund (10)

2310 Board Services	<u>Elementary</u>	<u>Secondary</u>	<u>Federal</u>	<u>Total</u>
100 <u>Personnel Services – Salaries</u>				
100 Personnel Services – Salaries				2,500.00
Total Personnel Services – Salaries				\$2,500.00
200 <u>Personnel Services – Employee Benefits</u>				
220 Social Security Contributions				188.22
230 PSERS Retirement Contributions				862.76
260 Workers’ Compensation				8.76
Total Personnel Services – Employee Benefits				\$1,059.74
300 <u>Purchased Professional and Technical Services</u>				
330 Other Professional Services				29,795.00
Total Purchased Professional and Technical Services				\$29,795.00
500 <u>Other Purchased Services</u>				
549 Other Advertising/Public Relations				2,922.89
580 Travel				58.02
Total Other Purchased Services				\$2,980.91
600 <u>Supplies</u>				
610 General Supplies				539.96
630 Food				28.38
Total Supplies				\$568.34
800 <u>Other Objects</u>				
810 Dues and Fees				14,177.08
Total Other Objects				\$14,177.08
Total 2310 Board Services				\$51,081.07

LEA : 114064003 Kutztown Area SD

Printed 11/18/2021 4:16:07 PM

General Fund (10)

2320 Board Treasurer Services	<u>Elementary</u>	<u>Secondary</u>	<u>Federal</u>	<u>Total</u>
100 <u>Personnel Services – Salaries</u>				
100 Personnel Services – Salaries				1,050.00
Total Personnel Services – Salaries				\$1,050.00
200 <u>Personnel Services – Employee Benefits</u>				
220 Social Security Contributions				78.09
230 PSERS Retirement Contributions				362.36
260 Workers’ Compensation				3.68
Total Personnel Services – Employee Benefits				\$444.13
Total 2320 Board Treasurer Services				\$1,494.13

LEA : 114064003 Kutztown Area SD

Printed 11/18/2021 4:16:07 PM

General Fund (10)

2330 Tax Assessment and Collection Services	<u>Elementary</u>	<u>Secondary</u>	<u>Federal</u>	<u>Total</u>
100 <u>Personnel Services – Salaries</u>				
100 Personnel Services – Salaries				22,898.75
Total Personnel Services – Salaries				\$22,898.75
200 <u>Personnel Services – Employee Benefits</u>				
220 Social Security Contributions				1,751.84
260 Workers’ Compensation				80.20
Total Personnel Services – Employee Benefits				\$1,832.04
300 <u>Purchased Professional and Technical Services</u>				
310 Official / Administrative Services				34,576.07
Total Purchased Professional and Technical Services				\$34,576.07
500 <u>Other Purchased Services</u>				
520 Insurance – General				3,243.25
Total Other Purchased Services				\$3,243.25
600 <u>Supplies</u>				
610 General Supplies				16,201.46
Total Supplies				\$16,201.46
Total 2330 Tax Assessment and Collection Services				\$78,751.57

LEA : 114064003 Kutztown Area SD

Printed 11/18/2021 4:16:07 PM

General Fund (10)

2350 Legal and Accounting Services	<u>Elementary</u>	<u>Secondary</u>	<u>Federal</u>	<u>Total</u>
300 <u>Purchased Professional and Technical Services</u>				
330 Other Professional Services				19,668.83
Total Purchased Professional and Technical Services				\$19,668.83
Total 2350 Legal and Accounting Services				\$19,668.83

LEA : 114064003 Kutztown Area SD

Printed 11/18/2021 4:16:07 PM

General Fund (10)

2360 Office of the Superintendent / Executive Director Services	<u>Elementary</u>	<u>Secondary</u>	<u>Federal</u>	<u>Total</u>
100 <u>Personnel Services – Salaries</u>				
100 Personnel Services – Salaries				378,334.84
Total Personnel Services – Salaries				\$378,334.84
200 <u>Personnel Services – Employee Benefits</u>				
210 Group Insurance – Contracted Provider				80,283.15
220 Social Security Contributions				26,301.66
230 PSERS Retirement Contributions				127,397.03
260 Workers' Compensation				1,325.12
299 All Other Employee Benefits				2,842.03
Total Personnel Services – Employee Benefits				\$238,148.99
300 <u>Purchased Professional and Technical Services</u>				
340 Technical Services				8,472.40
Total Purchased Professional and Technical Services				\$8,472.40
500 <u>Other Purchased Services</u>				
530 Communications	9,808.08			9,808.08
580 Travel				778.18
Total Other Purchased Services	\$9,808.08			\$10,586.26
600 <u>Supplies</u>				
610 General Supplies				4,160.82
630 Food				2,293.50
640 Books and Periodicals				609.56
Total Supplies				\$7,063.88
700 <u>Property</u>				
752 Capital Equipment – Original and Additional				536.97
Total Property				\$536.97
800 <u>Other Objects</u>				
810 Dues and Fees				8,419.00
Total Other Objects				\$8,419.00
Total 2360 Office of the Superintendent / Executive Director Services	\$9,808.08			\$651,562.34

LEA : 114064003 Kutztown Area SD

Printed 11/18/2021 4:16:07 PM

General Fund (10)

2380 Office of the Principal Services	Elementary	Secondary	Federal	Total
100 Personnel Services – Salaries				
100 Personnel Services – Salaries	295,566.70	444,825.93		740,392.63
Total Personnel Services – Salaries	\$295,566.70	\$444,825.93		\$740,392.63
200 Personnel Services – Employee Benefits				
210 Group Insurance – Contracted Provider	96,158.95	61,399.11		157,558.06
220 Social Security Contributions	21,365.74	32,533.61		53,899.35
230 PSERS Retirement Contributions	99,784.97	142,394.77		242,179.74
260 Workers' Compensation	1,034.71	1,456.26		2,490.97
299 All Other Employee Benefits	12,703.00	7,222.00		19,925.00
Total Personnel Services – Employee Benefits	\$231,047.37	\$245,005.75		\$476,053.12
500 Other Purchased Services				
580 Travel		172.94		172.94
599 Other Miscellaneous Purchased Services	3,044.58	1,861.60		4,906.18
Total Other Purchased Services	\$3,044.58	\$2,034.54		\$5,079.12
600 Supplies				
610 General Supplies	1,221.30	10,951.73		12,173.03
630 Food	170.08	2,545.32		2,715.40
Total Supplies	\$1,391.38	\$13,497.05		\$14,888.43
700 Property				
752 Capital Equipment – Original and Additional	350.08	3,318.50		3,668.58
Total Property	\$350.08	\$3,318.50		\$3,668.58
800 Other Objects				
810 Dues and Fees	568.20	4,108.30		4,676.50
Total Other Objects	\$568.20	\$4,108.30		\$4,676.50
Total 2380 Office of the Principal Services	\$531,968.31	\$712,790.07		\$1,244,758.38

LEA : 114064003 Kutztown Area SD

Printed 11/18/2021 4:16:07 PM

General Fund (10)

2390 Other Administration Services	<u>Elementary</u>	<u>Secondary</u>	<u>Federal</u>	<u>Total</u>
800 <u>Other Objects</u>				
890 Miscellaneous Expenditures				189,653.00
Total Other Objects				\$189,653.00
Total 2390 Other Administration Services				\$189,653.00

LEA : 114064003 Kutztown Area SD

Printed 11/18/2021 4:16:07 PM

General Fund (10)

2400 Support Services – Pupil Health	<u>Elementary</u>	<u>Secondary</u>	<u>Federal</u>	<u>Total</u>
100 <u>Personnel Services – Salaries</u>				
100 Personnel Services – Salaries				275,354.24
Total Personnel Services – Salaries				\$275,354.24
200 <u>Personnel Services – Employee Benefits</u>				
210 Group Insurance – Contracted Provider				81,411.65
220 Social Security Contributions				19,712.42
230 PSERS Retirement Contributions				94,301.44
260 Workers' Compensation				964.43
Total Personnel Services – Employee Benefits				\$196,389.94
300 <u>Purchased Professional and Technical Services</u>				
330 Other Professional Services				127,112.78
Total Purchased Professional and Technical Services				\$127,112.78
500 <u>Other Purchased Services</u>				
580 Travel				50.00
Total Other Purchased Services				\$50.00
600 <u>Supplies</u>				
610 General Supplies				8,050.59
Total Supplies				\$8,050.59
700 <u>Property</u>				
752 Capital Equipment – Original and Additional				7,980.00
Total Property				\$7,980.00
Total 2400 Support Services – Pupil Health				\$614,937.55

LEA : 114064003 Kutztown Area SD

Printed 11/18/2021 4:16:07 PM

General Fund (10)

2420 Medical Services

Elementary Secondary Federal Total

300 Purchased Professional and Technical Services

330 Other Professional Services 125,806.41

Total Purchased Professional and Technical Services \$125,806.41

Total 2420 Medical Services \$125,806.41

LEA : 114064003 Kutztown Area SD

Printed 11/18/2021 4:16:07 PM

General Fund (10)

2440 Nursing Services

	<u>Elementary</u>	<u>Secondary</u>	<u>Federal</u>	<u>Total</u>
100 <u>Personnel Services – Salaries</u>				
100 Personnel Services – Salaries				275,354.24
Total Personnel Services – Salaries				\$275,354.24
200 <u>Personnel Services – Employee Benefits</u>				
210 Group Insurance – Contracted Provider				81,411.65
220 Social Security Contributions				19,712.42
230 PSERS Retirement Contributions				94,301.44
260 Workers' Compensation				964.43
Total Personnel Services – Employee Benefits				\$196,389.94
300 <u>Purchased Professional and Technical Services</u>				
330 Other Professional Services				1,306.37
Total Purchased Professional and Technical Services				\$1,306.37
500 <u>Other Purchased Services</u>				
580 Travel				50.00
Total Other Purchased Services				\$50.00
600 <u>Supplies</u>				
610 General Supplies				8,050.59
Total Supplies				\$8,050.59
700 <u>Property</u>				
752 Capital Equipment – Original and Additional				7,980.00
Total Property				\$7,980.00
Total 2440 Nursing Services				\$489,131.14

LEA : 114064003 Kutztown Area SD

Printed 11/18/2021 4:16:07 PM

General Fund (10)

2500 Support Services – Business	Elementary	Secondary	Federal	Total
100 <u>Personnel Services – Salaries</u>				
100 Personnel Services – Salaries				232,049.04
Total Personnel Services – Salaries				\$232,049.04
200 <u>Personnel Services – Employee Benefits</u>				
210 Group Insurance – Contracted Provider				74,206.43
220 Social Security Contributions				17,471.39
230 PSERS Retirement Contributions				76,318.39
250 Unemployment Compensation				603.12
260 Workers' Compensation				803.99
299 All Other Employee Benefits				1,306.25
Total Personnel Services – Employee Benefits				\$170,709.57
300 <u>Purchased Professional and Technical Services</u>				
330 Other Professional Services				7,342.64
340 Technical Services				25,746.46
Total Purchased Professional and Technical Services				\$33,089.10
400 <u>Purchased Property Services</u>				
430 Repairs and Maintenance Services				2,207.42
440 Rentals				5,035.56
Total Purchased Property Services				\$7,242.98
500 <u>Other Purchased Services</u>				
580 Travel				749.88
Total Other Purchased Services				\$749.88
600 <u>Supplies</u>				
610 General Supplies				3,291.77
Total Supplies				\$3,291.77
800 <u>Other Objects</u>				
810 Dues and Fees				379.00
Total Other Objects				\$379.00
Total 2500 Support Services – Business				\$447,511.34

LEA : 114064003 Kutztown Area SD

Printed 11/18/2021 4:16:07 PM

General Fund (10)

2510 Fiscal Services

	<u>Elementary</u>	<u>Secondary</u>	<u>Federal</u>	<u>Total</u>
100 <u>Personnel Services – Salaries</u>				
100 Personnel Services – Salaries				232,049.04
Total Personnel Services – Salaries				\$232,049.04
200 <u>Personnel Services – Employee Benefits</u>				
210 Group Insurance – Contracted Provider				74,206.43
220 Social Security Contributions				17,471.39
230 PSERS Retirement Contributions				76,318.39
250 Unemployment Compensation				603.12
260 Workers' Compensation				803.99
299 All Other Employee Benefits				1,306.25
Total Personnel Services – Employee Benefits				\$170,709.57
300 <u>Purchased Professional and Technical Services</u>				
330 Other Professional Services				7,342.64
340 Technical Services				25,746.46
Total Purchased Professional and Technical Services				\$33,089.10
400 <u>Purchased Property Services</u>				
430 Repairs and Maintenance Services				2,207.42
440 Rentals				5,035.56
Total Purchased Property Services				\$7,242.98
500 <u>Other Purchased Services</u>				
580 Travel				749.88
Total Other Purchased Services				\$749.88
600 <u>Supplies</u>				
610 General Supplies				3,291.77
Total Supplies				\$3,291.77
800 <u>Other Objects</u>				
810 Dues and Fees				379.00
Total Other Objects				\$379.00
Total 2510 Fiscal Services				\$447,511.34

LEA : 114064003 Kutztown Area SD

Printed 11/18/2021 4:16:07 PM

General Fund (10)

2511 Supervision of Fiscal Services - Head of Component	<u>Elementary</u>	<u>Secondary</u>	<u>Federal</u>	<u>Total</u>
100 <u>Personnel Services – Salaries</u>				
100 Personnel Services – Salaries				110,716.00
Total Personnel Services – Salaries				\$110,716.00
200 <u>Personnel Services – Employee Benefits</u>				
210 Group Insurance – Contracted Provider				13,060.46
220 Social Security Contributions				8,173.89
230 PSERS Retirement Contributions				35,631.64
Total Personnel Services – Employee Benefits				\$56,865.99
500 <u>Other Purchased Services</u>				
580 Travel				425.84
Total Other Purchased Services				\$425.84
Total 2511 Supervision of Fiscal Services - Head of Component				\$168,007.83

LEA : 114064003 Kutztown Area SD

Printed 11/18/2021 4:16:07 PM

General Fund (10)

2515 Financial Accounting Services	<u>Elementary</u>	<u>Secondary</u>	<u>Federal</u>	<u>Total</u>
100 <u>Personnel Services – Salaries</u>				
100 Personnel Services – Salaries				121,333.04
Total Personnel Services – Salaries				\$121,333.04
200 <u>Personnel Services – Employee Benefits</u>				
210 Group Insurance – Contracted Provider				61,145.97
220 Social Security Contributions				9,297.50
230 PSERS Retirement Contributions				40,686.75
250 Unemployment Compensation				603.12
260 Workers' Compensation				803.99
299 All Other Employee Benefits				1,306.25
Total Personnel Services – Employee Benefits				\$113,843.58
300 <u>Purchased Professional and Technical Services</u>				
330 Other Professional Services				7,342.64
340 Technical Services				25,746.46
Total Purchased Professional and Technical Services				\$33,089.10
400 <u>Purchased Property Services</u>				
430 Repairs and Maintenance Services				2,207.42
440 Rentals				5,035.56
Total Purchased Property Services				\$7,242.98
500 <u>Other Purchased Services</u>				
580 Travel				324.04
Total Other Purchased Services				\$324.04
600 <u>Supplies</u>				
610 General Supplies				3,291.77
Total Supplies				\$3,291.77
800 <u>Other Objects</u>				
810 Dues and Fees				379.00
Total Other Objects				\$379.00
Total 2515 Financial Accounting Services				\$279,503.51

LEA : 114064003 Kutztown Area SD

Printed 11/18/2021 4:16:07 PM

General Fund (10)				
2600 Operation and Maintenance of Plant Services	<u>Elementary</u>	<u>Secondary</u>	<u>Federal</u>	<u>Total</u>
100 <u>Personnel Services – Salaries</u>				
100 Personnel Services – Salaries				753,677.35
Total Personnel Services – Salaries				\$753,677.35
200 <u>Personnel Services – Employee Benefits</u>				
210 Group Insurance – Contracted Provider				270,679.50
220 Social Security Contributions				56,679.39
230 PSERS Retirement Contributions				234,646.80
250 Unemployment Compensation				(1,456.38)
260 Workers' Compensation				2,622.39
299 All Other Employee Benefits				8,926.51
Total Personnel Services – Employee Benefits				\$572,098.21
300 <u>Purchased Professional and Technical Services</u>				
340 Technical Services				7,849.86
350 Security / Safety Services				15,633.66
Total Purchased Professional and Technical Services				\$23,483.52
400 <u>Purchased Property Services</u>				
410 Cleaning Services				203,451.72
420 Utility Services				43,769.65
430 Repairs and Maintenance Services			82,099.84	335,406.98
440 Rentals				1,639.00
Total Purchased Property Services			\$82,099.84	\$584,267.35
500 <u>Other Purchased Services</u>				
521 Fire Insurance				85,084.00
522 Automotive Liability Insurance				12,627.00
523 General Property and Liability Insurance				13,589.00
530 Communications				33,677.42
580 Travel				746.60
Total Other Purchased Services				\$145,724.02
600 <u>Supplies</u>				
610 General Supplies	40,093.29	120,076.59	72,239.82	232,409.70
620 Energy				575,011.95
Total Supplies	\$40,093.29	\$120,076.59	\$72,239.82	\$807,421.65
700 <u>Property</u>				
752 Capital Equipment – Original and Additional			18,154.99	21,992.74
Total Property			\$18,154.99	\$21,992.74
800 <u>Other Objects</u>				
810 Dues and Fees				1,145.00
Total Other Objects				\$1,145.00
Total 2600 Operation and Maintenance of Plant Services	\$40,093.29	\$120,076.59	\$172,494.65	\$2,909,809.84

LEA : 114064003 Kutztown Area SD

Printed 11/18/2021 4:16:07 PM

General Fund (10)				
2620 Operation of Buildings Services	<u>Elementary</u>	<u>Secondary</u>	<u>Federal</u>	<u>Total</u>
100 <u>Personnel Services – Salaries</u>				
100 Personnel Services – Salaries				753,677.35
Total Personnel Services – Salaries				\$753,677.35
200 <u>Personnel Services – Employee Benefits</u>				
210 Group Insurance – Contracted Provider				270,679.50
220 Social Security Contributions				56,679.39
230 PSERS Retirement Contributions				234,646.80
250 Unemployment Compensation				(1,456.38)
260 Workers' Compensation				2,622.39
299 All Other Employee Benefits				8,926.51
Total Personnel Services – Employee Benefits				\$572,098.21
300 <u>Purchased Professional and Technical Services</u>				
340 Technical Services				7,849.86
350 Security / Safety Services				15,633.66
Total Purchased Professional and Technical Services				\$23,483.52
400 <u>Purchased Property Services</u>				
410 Cleaning Services				203,451.72
420 Utility Services				43,769.65
430 Repairs and Maintenance Services			82,099.84	335,406.98
440 Rentals				1,639.00
Total Purchased Property Services			\$82,099.84	\$584,267.35
500 <u>Other Purchased Services</u>				
521 Fire Insurance				85,084.00
522 Automotive Liability Insurance				12,627.00
523 General Property and Liability Insurance				13,589.00
530 Communications				33,677.42
580 Travel				746.60
Total Other Purchased Services				\$145,724.02
600 <u>Supplies</u>				
610 General Supplies	40,093.29	120,076.59	72,239.82	232,409.70
620 Energy				575,011.95
Total Supplies	\$40,093.29	\$120,076.59	\$72,239.82	\$807,421.65
700 <u>Property</u>				
752 Capital Equipment – Original and Additional			18,154.99	21,992.74
Total Property			\$18,154.99	\$21,992.74
800 <u>Other Objects</u>				
810 Dues and Fees				1,145.00
Total Other Objects				\$1,145.00
Total 2620 Operation of Buildings Services	\$40,093.29	\$120,076.59	\$172,494.65	\$2,909,809.84

LEA : 114064003 Kutztown Area SD

Printed 11/18/2021 4:16:07 PM

General Fund (10)

2700 Student Transportation Services	Elementary	Secondary	Federal	Total
100 <u>Personnel Services – Salaries</u>				
100 Personnel Services – Salaries				94,369.10
Total Personnel Services – Salaries				\$94,369.10
200 <u>Personnel Services – Employee Benefits</u>				
210 Group Insurance – Contracted Provider				36,489.94
220 Social Security Contributions				7,219.50
230 PSERS Retirement Contributions				30,306.08
260 Workers' Compensation				330.52
299 All Other Employee Benefits				550.00
Total Personnel Services – Employee Benefits				\$74,896.04
300 <u>Purchased Professional and Technical Services</u>				
330 Other Professional Services				50.00
340 Technical Services				4,300.00
Total Purchased Professional and Technical Services				\$4,350.00
400 <u>Purchased Property Services</u>				
430 Repairs and Maintenance Services				7,845.53
Total Purchased Property Services				\$7,845.53
500 <u>Other Purchased Services</u>				
513 Contracted Carriers			3,167.52	923,853.38
519 Student Transportation Services From Other Sources			4,981.75	184,810.76
580 Travel				80.84
599 Other Miscellaneous Purchased Services				13,017.42
Total Other Purchased Services			\$8,149.27	\$1,121,762.40
600 <u>Supplies</u>				
610 General Supplies				775.09
620 Energy				15,613.69
Total Supplies				\$16,388.78
700 <u>Property</u>				
762 Capitalized Equipment - Replacement				41,542.80
Total Property				\$41,542.80
800 <u>Other Objects</u>				
810 Dues and Fees				15.00
Total Other Objects				\$15.00
Total 2700 Student Transportation Services			\$8,149.27	\$1,361,169.65

LEA : 114064003 Kutztown Area SD

Printed 11/18/2021 4:16:07 PM

General Fund (10)				
2720 Vehicle Operation Services	<u>Elementary</u>	<u>Secondary</u>	<u>Federal</u>	<u>Total</u>
100 <u>Personnel Services – Salaries</u>				
100 Personnel Services – Salaries				83,978.17
Total Personnel Services – Salaries				\$83,978.17
200 <u>Personnel Services – Employee Benefits</u>				
210 Group Insurance – Contracted Provider				36,489.94
220 Social Security Contributions				6,424.59
230 PSERS Retirement Contributions				26,720.20
260 Workers' Compensation				294.13
Total Personnel Services – Employee Benefits				\$69,928.86
300 <u>Purchased Professional and Technical Services</u>				
330 Other Professional Services				50.00
340 Technical Services				4,300.00
Total Purchased Professional and Technical Services				\$4,350.00
500 <u>Other Purchased Services</u>				
513 Contracted Carriers			3,167.52	759,613.18
519 Student Transportation Services From Other Sources			4,981.75	184,810.76
580 Travel				80.84
599 Other Miscellaneous Purchased Services				13,017.42
Total Other Purchased Services			\$8,149.27	\$957,522.20
600 <u>Supplies</u>				
610 General Supplies				775.09
620 Energy				15,613.69
Total Supplies				\$16,388.78
700 <u>Property</u>				
762 Capitalized Equipment - Replacement				41,542.80
Total Property				\$41,542.80
800 <u>Other Objects</u>				
810 Dues and Fees				15.00
Total Other Objects				\$15.00
Total 2720 Vehicle Operation Services			\$8,149.27	\$1,173,725.81

LEA : 114064003 Kutztown Area SD

Printed 11/18/2021 4:16:07 PM

General Fund (10)

2740 Vehicle Servicing and Maintenance Services	<u>Elementary</u>	<u>Secondary</u>	<u>Federal</u>	<u>Total</u>
400 <u>Purchased Property Services</u>				
430 Repairs and Maintenance Services				7,845.53
Total Purchased Property Services				\$7,845.53
Total 2740 Vehicle Servicing and Maintenance Services				\$7,845.53

LEA : 114064003 Kutztown Area SD

Printed 11/18/2021 4:16:07 PM

General Fund (10)

2750 Nonpublic Transportation	<u>Elementary</u>	<u>Secondary</u>	<u>Federal</u>	<u>Total</u>
100 <u>Personnel Services – Salaries</u>				
100 Personnel Services – Salaries				10,390.93
Total Personnel Services – Salaries				\$10,390.93
200 <u>Personnel Services – Employee Benefits</u>				
220 Social Security Contributions				794.91
230 PSERS Retirement Contributions				3,585.88
260 Workers’ Compensation				36.39
299 All Other Employee Benefits				550.00
Total Personnel Services – Employee Benefits				\$4,967.18
500 <u>Other Purchased Services</u>				
513 Contracted Carriers				164,240.20
Total Other Purchased Services				\$164,240.20
Total 2750 Nonpublic Transportation				\$179,598.31

LEA : 114064003 Kutztown Area SD

Printed 11/18/2021 4:16:07 PM

General Fund (10)

2800 Support Services – Central	<u>Elementary</u>	<u>Secondary</u>	<u>Federal</u>	<u>Total</u>
100 <u>Personnel Services – Salaries</u>				
100 Personnel Services – Salaries				52,324.98
Total Personnel Services – Salaries				\$52,324.98
200 <u>Personnel Services – Employee Benefits</u>				
210 Group Insurance – Contracted Provider				25,734.44
220 Social Security Contributions				3,816.80
230 PSERS Retirement Contributions				17,540.59
260 Workers' Compensation				168.98
299 All Other Employee Benefits				754.00
Total Personnel Services – Employee Benefits				\$48,014.81
300 <u>Purchased Professional and Technical Services</u>				
390 Other Purchased Professional and Technical Services				2,473.85
Total Purchased Professional and Technical Services				\$2,473.85
500 <u>Other Purchased Services</u>				
580 Travel				165.00
Total Other Purchased Services				\$165.00
600 <u>Supplies</u>				
610 General Supplies				13,885.87
Total Supplies				\$13,885.87
800 <u>Other Objects</u>				
810 Dues and Fees				353.95
Total Other Objects				\$353.95
Total 2800 Support Services – Central				\$117,218.46

LEA : 114064003 Kutztown Area SD

Printed 11/18/2021 4:16:07 PM

General Fund (10)

2830 Staff Services

	<u>Elementary</u>	<u>Secondary</u>	<u>Federal</u>	<u>Total</u>
100 <u>Personnel Services – Salaries</u>				
100 Personnel Services – Salaries				52,324.98
Total Personnel Services – Salaries				\$52,324.98
200 <u>Personnel Services – Employee Benefits</u>				
210 Group Insurance – Contracted Provider				25,734.44
220 Social Security Contributions				3,816.80
230 PSERS Retirement Contributions				17,540.59
260 Workers' Compensation				168.98
299 All Other Employee Benefits				754.00
Total Personnel Services – Employee Benefits				\$48,014.81
300 <u>Purchased Professional and Technical Services</u>				
390 Other Purchased Professional and Technical Services				2,473.85
Total Purchased Professional and Technical Services				\$2,473.85
500 <u>Other Purchased Services</u>				
580 Travel				165.00
Total Other Purchased Services				\$165.00
600 <u>Supplies</u>				
610 General Supplies				13,885.87
Total Supplies				\$13,885.87
800 <u>Other Objects</u>				
810 Dues and Fees				353.95
Total Other Objects				\$353.95
Total 2830 Staff Services				\$117,218.46

LEA : 114064003 Kutztown Area SD

Printed 11/18/2021 4:16:07 PM

General Fund (10)

2832 Recruitment and Placement Services	<u>Elementary</u>	<u>Secondary</u>	<u>Federal</u>	<u>Total</u>
100 <u>Personnel Services – Salaries</u>				
100 Personnel Services – Salaries				52,324.98
Total Personnel Services – Salaries				\$52,324.98
200 <u>Personnel Services – Employee Benefits</u>				
210 Group Insurance – Contracted Provider				25,734.44
220 Social Security Contributions				3,816.80
230 PSERS Retirement Contributions				17,540.59
260 Workers' Compensation				168.98
299 All Other Employee Benefits				754.00
Total Personnel Services – Employee Benefits				\$48,014.81
300 <u>Purchased Professional and Technical Services</u>				
390 Other Purchased Professional and Technical Services				2,473.85
Total Purchased Professional and Technical Services				\$2,473.85
500 <u>Other Purchased Services</u>				
580 Travel				165.00
Total Other Purchased Services				\$165.00
600 <u>Supplies</u>				
610 General Supplies				13,885.87
Total Supplies				\$13,885.87
800 <u>Other Objects</u>				
810 Dues and Fees				353.95
Total Other Objects				\$353.95
Total 2832 Recruitment and Placement Services				\$117,218.46

LEA : 114064003 Kutztown Area SD

Printed 11/18/2021 4:16:07 PM

General Fund (10)

2900 Other Support Services	<u>Elementary</u>	<u>Secondary</u>	<u>Federal</u>	<u>Total</u>
500 <u>Other Purchased Services</u>				
595 IU Payments By Withholding				26,734.60
Total Other Purchased Services				\$26,734.60
Total 2900 Other Support Services				\$26,734.60

LEA : 114064003 Kutztown Area SD

Printed 11/18/2021 4:16:07 PM

General Fund (10)

2910 Support Services Not Listed Elsewhere In the 2000 Series

Elementary Secondary Federal Total

500 Other Purchased Services

595 IU Payments By Withholding 26,734.60

Total Other Purchased Services \$26,734.60

Total 2910 Support Services Not Listed Elsewhere In the 2000 Series \$26,734.60

LEA : 114064003 Kutztown Area SD

Printed 11/18/2021 4:16:23 PM

General Fund (10)

3000 Operation of Non-Instructional Services		<u>Total</u>
100 <u>Personnel Services – Salaries</u>		
100 Personnel Services – Salaries		422,753.97
Total Personnel Services – Salaries		\$422,753.97
200 <u>Personnel Services – Employee Benefits</u>		
210 Group Insurance – Contracted Provider		702.98
220 Social Security Contributions		31,977.82
230 PSERS Retirement Contributions		135,701.37
250 Unemployment Compensation		393.14
260 Workers' Compensation		1,455.09
Total Personnel Services – Employee Benefits		\$170,230.40
300 <u>Purchased Professional and Technical Services</u>		
330 Other Professional Services		20,000.00
390 Other Purchased Professional and Technical Services		1,462.50
Total Purchased Professional and Technical Services		\$21,462.50
400 <u>Purchased Property Services</u>		
430 Repairs and Maintenance Services		21,319.50
440 Rentals		4,121.00
Total Purchased Property Services		\$25,440.50
500 <u>Other Purchased Services</u>		
510 Student Transportation Services		46,641.70
520 Insurance – General		10,971.00
580 Travel		2,837.73
591 Services Purchased Locally		12,892.23
592 Services Purchased From Another LEA Within the State		250.00
Total Other Purchased Services		\$73,592.66
600 <u>Supplies</u>		
610 General Supplies		106,337.02
Total Supplies		\$106,337.02
800 <u>Other Objects</u>		
810 Dues and Fees		5,391.00
Total Other Objects		\$5,391.00
Total 3000 Operation of Non-Instructional Services		\$825,208.05

LEA : 114064003 Kutztown Area SD

Printed 11/18/2021 4:16:23 PM

General Fund (10)				
3200 Student Activities	<u>Elementary</u>	<u>Secondary</u>	<u>Federal</u>	<u>Total</u>
100 <u>Personnel Services – Salaries</u>				
100 Personnel Services – Salaries				422,753.97
Total Personnel Services – Salaries				\$422,753.97
200 <u>Personnel Services – Employee Benefits</u>				
210 Group Insurance – Contracted Provider				702.98
220 Social Security Contributions				31,977.82
230 PSERS Retirement Contributions				135,701.37
250 Unemployment Compensation				393.14
260 Workers' Compensation				1,455.09
Total Personnel Services – Employee Benefits				\$170,230.40
300 <u>Purchased Professional and Technical Services</u>				
330 Other Professional Services				20,000.00
390 Other Purchased Professional and Technical Services				1,462.50
Total Purchased Professional and Technical Services				\$21,462.50
400 <u>Purchased Property Services</u>				
430 Repairs and Maintenance Services				21,319.50
440 Rentals				4,121.00
Total Purchased Property Services				\$25,440.50
500 <u>Other Purchased Services</u>				
510 Student Transportation Services				46,641.70
520 Insurance – General				10,971.00
580 Travel				2,837.73
Total Other Purchased Services				\$60,450.43
600 <u>Supplies</u>				
610 General Supplies				104,437.02
Total Supplies				\$104,437.02
800 <u>Other Objects</u>				
810 Dues and Fees				5,391.00
Total Other Objects				\$5,391.00
Total 3200 Student Activities				\$810,165.82

LEA : 114064003 Kutztown Area SD

Printed 11/18/2021 4:16:23 PM

General Fund (10)

3300 Community Services

Elementary Secondary Federal Total

500 Other Purchased Services

591 Services Purchased Locally 12,892.23

592 Services Purchased From Another LEA Within the State 250.00

Total Other Purchased Services \$13,142.23

600 Supplies

610 General Supplies 1,900.00 1,900.00

Total Supplies \$1,900.00 \$1,900.00

Total 3300 Community Services \$1,900.00 \$15,042.23

LEA : 114064003 Kutztown Area SD

Printed 11/18/2021 4:16:34 PM

General Fund (10)

4000 Facilities Acquisition, Construction and Improvement Services

Total

700 Property

752 Capital Equipment – Original and Additional

105,480.00

Total Property

\$105,480.00

Total 4000 Facilities Acquisition, Construction and Improvement Services

\$105,480.00

LEA : 114064003 Kutztown Area SD

Printed 11/18/2021 4:16:34 PM

General Fund (10)

4600 Existing Building Improvement Services	<u>Elementary</u>	<u>Secondary</u>	<u>Federal</u>	<u>Total</u>
700 <u>Property</u>				
752 Capital Equipment – Original and Additional				105,480.00
Total Property				\$105,480.00
Total 4600 Existing Building Improvement Services				\$105,480.00

LEA : 114064003 Kutztown Area SD

Printed 11/18/2021 4:16:39 PM

General Fund (10)	
5000 Other Expenditures and Financing Uses	<u>Total</u>
800 <u>Other Objects</u>	
830 Interest	562,640.72
Total Other Objects	\$562,640.72
900 <u>Other Uses of Funds</u>	
910 Redemption of Principal	8,727,480.48
939 Other Fund Transfers	364,690.51
Total Other Uses of Funds	\$9,092,170.99
Total 5000 Other Expenditures and Financing Uses	\$9,654,811.71

LEA : 114064003 Kutztown Area SD

Printed 11/18/2021 4:16:39 PM

General Fund (10)

5100 Debt Service / Other Expenditures and Financing Uses	<u>Elementary</u>	<u>Secondary</u>	<u>Federal</u>	<u>Total</u>
800 <u>Other Objects</u>				
830 Interest				562,640.72
Total Other Objects				\$562,640.72
900 <u>Other Uses of Funds</u>				
910 Redemption of Principal				8,727,480.48
Total Other Uses of Funds				\$8,727,480.48
Total 5100 Debt Service / Other Expenditures and Financing Uses				\$9,290,121.20

LEA : 114064003 Kutztown Area SD

Printed 11/18/2021 4:16:39 PM

General Fund (10)				
5110 Debt Service	<u>Elementary</u>	<u>Secondary</u>	<u>Federal</u>	<u>Total</u>
800 <u>Other Objects</u>				
830 Interest				562,640.72
Total Other Objects				\$562,640.72
900 <u>Other Uses of Funds</u>				
910 Redemption of Principal				2,127,480.48
Total Other Uses of Funds				\$2,127,480.48
Total 5110 Debt Service				\$2,690,121.20

LEA : 114064003 Kutztown Area SD

Printed 11/18/2021 4:16:39 PM

General Fund (10)

5120 Debt Service – Refunded Bonds	<u>Elementary</u>	<u>Secondary</u>	<u>Federal</u>	<u>Total</u>
900 <u>Other Uses of Funds</u>				
910 Redemption of Principal				6,600,000.00
Total Other Uses of Funds				\$6,600,000.00
Total 5120 Debt Service – Refunded Bonds				\$6,600,000.00

LEA : 114064003 Kutztown Area SD

Printed 11/18/2021 4:16:39 PM

General Fund (10)

5200 Interfund Transfers – Out	<u>Elementary</u>	<u>Secondary</u>	<u>Federal</u>	<u>Total</u>
900 <u>Other Uses of Funds</u>				
939 Other Fund Transfers				364,690.51
Total Other Uses of Funds				\$364,690.51
Total 5200 Interfund Transfers – Out				\$364,690.51

LEA : 114064003 Kutztown Area SD

Printed 11/18/2021 4:16:39 PM

General Fund (10)

5230 Capital Projects Fund Transfers	<u>Elementary</u>	<u>Secondary</u>	<u>Federal</u>	<u>Total</u>
900 <u>Other Uses of Funds</u>				
939 Other Fund Transfers				364,038.34
Total Other Uses of Funds				\$364,038.34
Total 5230 Capital Projects Fund Transfers				\$364,038.34

LEA : 114064003 Kutztown Area SD

Printed 11/18/2021 4:16:39 PM

General Fund (10)

5250 Enterprise Fund Transfers	<u>Elementary</u>	<u>Secondary</u>	<u>Federal</u>	<u>Total</u>
900 <u>Other Uses of Funds</u>				
939 Other Fund Transfers				652.17
Total Other Uses of Funds				\$652.17
Total 5250 Enterprise Fund Transfers				\$652.17

LEA : 114064003 Kutztown Area SD

Printed 11/18/2021 4:16:26 PM

Student Sponsored Activity Fund (21)

3200 Student Activities	<u>Elementary</u>	<u>Secondary</u>	<u>Federal</u>	<u>Total</u>
600 <u>Supplies</u>				
610 General Supplies				79,974.00
Total Supplies				\$79,974.00
Total 3200 Student Activities				\$79,974.00

LEA : 114064003 Kutztown Area SD

Printed 11/18/2021 4:16:14 PM

Other Capital Projects Fund (39)

2000 Support Services

Total

700	<u>Property</u>	
752	Capital Equipment – Original and Additional	337,581.26
758	Capitalized Technology Software - Original	18,045.00
762	Capitalized Equipment - Replacement	2,522,893.45
790	Other Property	16,615.00
Total Property		\$2,895,134.71
Total 2000 Support Services		\$2,895,134.71

LEA : 114064003 Kutztown Area SD

Printed 11/18/2021 4:16:14 PM

Other Capital Projects Fund (39)

2600 Operation and Maintenance of Plant Services

Elementary Secondary Federal Total

700 <u>Property</u>				
752 Capital Equipment – Original and Additional				337,581.26
758 Capitalized Technology Software - Original				18,045.00
762 Capitalized Equipment - Replacement				2,522,893.45
790 Other Property				16,615.00
Total Property				\$2,895,134.71
Total 2600 Operation and Maintenance of Plant Services				\$2,895,134.71

LEA : 114064003 Kutztown Area SD

Printed 11/18/2021 4:16:14 PM

Other Capital Projects Fund (39)

2620 Operation of Buildings Services	<u>Elementary</u>	<u>Secondary</u>	<u>Federal</u>	<u>Total</u>
700 <u>Property</u>				
752 Capital Equipment – Original and Additional				337,581.26
758 Capitalized Technology Software - Original				18,045.00
762 Capitalized Equipment - Replacement				2,522,893.45
790 Other Property				16,615.00
Total Property				\$2,895,134.71
Total 2620 Operation of Buildings Services				\$2,895,134.71

LEA : 114064003 Kutztown Area SD

Printed 11/18/2021 4:16:36 PM

Other Capital Projects Fund (39)

4000 Facilities Acquisition, Construction and Improvement Services

Total

300 Purchased Professional and Technical Services

330 Other Professional Services

64,971.00

Total Purchased Professional and Technical Services

\$64,971.00

Total 4000 Facilities Acquisition, Construction and Improvement Services

\$64,971.00

LEA : 114064003 Kutztown Area SD

Printed 11/18/2021 4:16:36 PM

Other Capital Projects Fund (39)

4400 Architecture and Engineering Services / Educational Specifications – Improvements	<u>Elementary</u>	<u>Secondary</u>	<u>Federal</u>	<u>Total</u>
300 <u>Purchased Professional and Technical Services</u>				
330 Other Professional Services				64,971.00
Total Purchased Professional and Technical Services				\$64,971.00
Total 4400 Architecture and Engineering Services / Educational Specifications – Improvements				\$64,971.00

LEA : 114064003 Kutztown Area SD

Printed 11/18/2021 4:16:59 PM

	<u>General Fund(10)</u>	<u>Student Sponsored Activity Fund(21)</u>	<u>Public Purpose Trust(27)</u>	<u>Other Compt Approved (28)</u>	<u>Athletic / Activity(29)</u>
1000 <u>Instruction</u>					
1100 Regular Programs - Elementary / Secondary	14,005,404.90				
1200 Special Programs - Elementary / Secondary	4,524,514.37				
1300 Vocational Education	875,597.04				
1400 Other Instructional Programs - Elementary / Secondary	36,860.88				
1600 Adult Education Programs	2,125.01				
Total Instruction	\$19,444,502.20				
2000 <u>Support Services</u>					
2100 Support Services - Students	1,162,499.76				
2200 Support Services - Instructional Staff	1,847,581.36				
2300 Support Services - Administration	2,236,969.32				
2400 Support Services - Pupil Health	614,937.55				
2500 Support Services - Business	447,511.34				
2600 Operation and Maintenance of Plant Services	2,909,809.84				
2700 Student Transportation Services	1,361,169.65				
2800 Support Services - Central	117,218.46				
2900 Other Support Services	26,734.60				
Total Support Services	\$10,724,431.88				
3000 <u>Operation of Non-Instructional Services</u>					
3200 Student Activities	810,165.82	79,974.00			
3300 Community Services	15,042.23				
Total Operation of Non-Instructional Services	\$825,208.05	\$79,974.00			
4000 <u>Facilities Acquisition, Construction and Improvement Services</u>					
4400 Architecture and Engineering Services / Educational Specifications - Improvements					
4600 Existing Building Improvement Services	105,480.00				
Total Facilities Acquisition, Construction and Improvement Services	\$105,480.00				
5000 <u>Other Expenditures and Financing Uses</u>					
5100 Debt Service / Other Expenditures and Financing Uses	9,290,121.20				
5200 Interfund Transfers - Out	364,690.51				
Total Other Expenditures and Financing Uses	\$9,654,811.71				
TOTAL ACTUAL EXPENDITURES & OTHER FINANCING USES	\$40,754,433.84	\$79,974.00			

LEA : 114064003 Kutztown Area SD

Printed 11/18/2021 4:16:59 PM

	<u>Capital Reserve (690.1850)(31)</u>	<u>Capital Reserve (1431)(32)</u>	<u>Other Capital Projects Fund(39)</u>	<u>Debt Service(40)</u>	<u>Permanent(90)</u>
1000 <u>Instruction</u>					
1100 Regular Programs - Elementary / Secondary					
1200 Special Programs - Elementary / Secondary					
1300 Vocational Education					
1400 Other Instructional Programs - Elementary / Secondary					
1600 Adult Education Programs					
Total Instruction					
2000 <u>Support Services</u>					
2100 Support Services - Students					
2200 Support Services - Instructional Staff					
2300 Support Services - Administration					
2400 Support Services - Pupil Health					
2500 Support Services - Business					
2600 Operation and Maintenance of Plant Services			2,895,134.71		
2700 Student Transportation Services					
2800 Support Services - Central					
2900 Other Support Services					
Total Support Services			\$2,895,134.71		
3000 <u>Operation of Non-Instructional Services</u>					
3200 Student Activities					
3300 Community Services					
Total Operation of Non-Instructional Services					
4000 <u>Facilities Acquisition, Construction and Improvement Services</u>					
4400 Architecture and Engineering Services / Educational Specifications - Improvements			64,971.00		
4600 Existing Building Improvement Services					
Total Facilities Acquisition, Construction and Improvement Services			\$64,971.00		
5000 <u>Other Expenditures and Financing Uses</u>					
5100 Debt Service / Other Expenditures and Financing Uses					
5200 Interfund Transfers - Out					
Total Other Expenditures and Financing Uses					
TOTAL ACTUAL EXPENDITURES & OTHER FINANCING USES			\$2,960,105.71		

LEA : 114064003 Kutztown Area SD

Printed 11/18/2021 4:16:59 PM

	<u>Total</u>
1000 <u>Instruction</u>	
1100 Regular Programs - Elementary / Secondary	14,005,404.90
1200 Special Programs - Elementary / Secondary	4,524,514.37
1300 Vocational Education	875,597.04
1400 Other Instructional Programs - Elementary / Secondary	36,860.88
1600 Adult Education Programs	2,125.01
Total Instruction	\$19,444,502.20
2000 <u>Support Services</u>	
2100 Support Services - Students	1,162,499.76
2200 Support Services - Instructional Staff	1,847,581.36
2300 Support Services - Administration	2,236,969.32
2400 Support Services - Pupil Health	614,937.55
2500 Support Services - Business	447,511.34
2600 Operation and Maintenance of Plant Services	5,804,944.55
2700 Student Transportation Services	1,361,169.65
2800 Support Services - Central	117,218.46
2900 Other Support Services	26,734.60
Total Support Services	\$13,619,566.59
3000 <u>Operation of Non-Instructional Services</u>	
3200 Student Activities	890,139.82
3300 Community Services	15,042.23
Total Operation of Non-Instructional Services	\$905,182.05
4000 <u>Facilities Acquisition, Construction and Improvement Services</u>	
4400 Architecture and Engineering Services / Educational Specifications - Improvements	64,971.00
4600 Existing Building Improvement Services	105,480.00
Total Facilities Acquisition, Construction and Improvement Services	\$170,451.00
5000 <u>Other Expenditures and Financing Uses</u>	
5100 Debt Service / Other Expenditures and Financing Uses	9,290,121.20
5200 Interfund Transfers - Out	364,690.51
Total Other Expenditures and Financing Uses	\$9,654,811.71
TOTAL ACTUAL EXPENDITURES & OTHER FINANCING USES	\$43,794,513.55

LEA : 114064003 Kutztown Area SD

Printed 11/18/2021 4:17:10 PM

PSERS Salary Data (Salary Data should relate to the General Fund only)

Amount	Description	Amount
	Total Salary Base for salaries subject to PSERS withholding	15,027,907.79
	Total Federally Funded salaries subject to PSERS withholding	196,220.90

Title I Expenditure Data

Amount	Description	Amount
	Expenditures Funded with Current Title I Funds	250,314.00
	Expenditures Funded with Carry over Title I Funds	37,553.73
Total Title I Expenditure Data		\$287,867.73

Title IV Revenue Data

Amount	Description	Amount
	Revenue from Title IV-A-1: Student Support and Academic Enrichment Grants	20,812.11
	Revenue from Title IV-B: 21st Century Community Learning Centers	

Title V Revenue Data

Amount	Description	Amount
	Revenue from Title V-B-2: Rural and Low-Income School Programs	
	Revenue from Title V-B-1: Small Rural School Achievement (Directly from the Federal Govt)	

1 .	<u>Current Special Education Expenditures/Expenses within Functions 1000, 2000, 3100, and 3200</u>	3,899,577.29
2 .	<u>Current Special Education Expenditures for Instruction Functions 1000 and 3200</u>	3,498,860.62
3 .	<u>Current Special Education Expenditures for Pupil Support Services Function 2100</u>	
4 .	<u>Current Special Education Expenditures for Instructional Staff Support Services Function 2200</u>	220,887.66
5 .	<u>Current Special Education Expenditures for Student Transportation Support Services Function 2700</u>	179,829.01

Note: Do not report total Special Education expenditures for the functions listed above. Refer to the AFR User Manual for specific instructions on Funds/Functions/Objects to be included and excluded on each line.

Benefits for Staff Relative to Collective Bargaining Agreements

	OBJECT	COVERED	NOT COVERED	TOTAL
10 General Fund	No Self Insurance data to report			
	211 Medical Insurance	1,557,925.56	1,087,534.47	2,645,460.03
	212 Dental Insurance	27,827.16	14,510.51	42,337.67
	215 Eye Care Insurance	9,542.07	6,585.03	16,127.10
	216 Prescription Insurance			
	271 Self-Insurance Medical Benefits			
	272 Self-Insurance Dental Benefits			
	275 Self-Insurance Eye Care Benefits			
	276 Self-Insurance Prescription Benefits			
	FUND TOTAL	\$1,595,294.79	\$1,108,630.01	\$2,703,924.80
50 Enterprise Fund	No Self Insurance data to report			
	211 Medical Insurance		61,465.10	61,465.10
	212 Dental Insurance		889.98	889.98
	215 Eye Care Insurance		376.96	376.96
	216 Prescription Insurance			
	271 Self-Insurance Medical Benefits			
	272 Self-Insurance Dental Benefits			
	275 Self-Insurance Eye Care Benefits			
	276 Self-Insurance Prescription Benefits			
	FUND TOTAL		\$62,732.04	\$62,732.04
60 Internal Service Fund	No Self Insurance data to report			
	211 Medical Insurance			
	212 Dental Insurance			
	215 Eye Care Insurance			
	216 Prescription Insurance			
	271 Self-Insurance Medical Benefits			
	272 Self-Insurance Dental Benefits			
	275 Self-Insurance Eye Care Benefits			
	276 Self-Insurance Prescription Benefits			
	FUND TOTAL			
Total of All Funds		\$1,595,294.79	\$1,171,362.05	\$2,766,656.84

LEA : 114064003 Kutztown Area SD

Printed 11/18/2021 4:17:20 PM

Function	Special Education (Prior Year)	Nonspecial Education (Prior Year)	Total (Prior Year)	Special Education (Current Year)	Nonspecial Education (Current Year)	Total (Current Year)
2120 Guidance Services	158,405.99	661,878.19	820,284.18	182,227.72	652,488.01	834,715.73
2140 Psychological Services	134,799.66		134,799.66	191,390.31		191,390.31
2150 Speech Pathology and Audiology Services						
2160 Social Work Services						
2260 Instruction and Curriculum Development Services	54,746.32	215,039.66	269,785.98	63,295.67	226,637.67	289,933.34
2350 Legal and Accounting Services	4,483.00	13,997.00	18,480.00	4,267.00	15,401.83	19,668.83
2420 Medical Services	25,162.61	98,836.97	123,999.58	27,464.94	98,341.47	125,806.41
2440 Nursing Services	87,362.71	343,154.53	430,517.24	106,782.76	382,348.38	489,131.14
2700 Student Transportation Services	445,533.65	882,700.26	1,328,233.91	435,949.72	917,070.66	1,353,020.38
Total	\$910,493.94	\$2,215,606.61	\$3,126,100.55	\$1,011,378.12	\$2,292,288.02	\$3,303,666.14

LEA : 114064003 Kutztown Area SD

Printed 11/18/2021 4:17:25 PM

(PRINCIPAL AMOUNTS ONLY)

GOVERNMENTAL FUNDS/ ACTIVITIES

	Short-Term Borrowing	General Obligation Bonds/Notes	Authority Building Obligations	Other Long-Term Debt	Other Post- Employment Benefits (OPEB)	Compensated Absences	Net Pension Liability	Total
1. Debt at Beginning of Fiscal Year		24,475,000.00			6,969,361.00	529,122.00	46,380,586.00	78,354,069.00
2. Additional Debt Incurred During Year		13,330,000.00			391,935.00	63,560.00	4,604,717.00	18,390,212.00
3. Retirements and Repayments		8,727,480.48			420,644.00	59,659.00	4,431,105.00	13,638,888.48
4. Debt at End of Fiscal Year		29,077,519.52			6,940,652.00	533,023.00	46,554,198.00	83,105,392.52
5. Accreted Interest at End Of Fiscal Year								
6. Total Debt and Accreted Interest		29,077,519.52			6,940,652.00	533,023.00	46,554,198.00	83,105,392.52
7. Current Portion P&I - Due within 1 year		1,769,919.00				98,778.00		1,868,697.00
8. Interest Paid during current fiscal year		532,256.41						532,256.41

(PRINCIPAL AMOUNTS ONLY)

PROPRIETARY FUNDS

	Short-Term Borrowing	General Obligation Bonds/Notes	Authority Building Obligations	Other Long-Term Debt	Other Post- Employment Benefits (OPEB)	Compensated Absences	Net Pension Liability	Total
1. Debt at Beginning of Fiscal Year					131,304.00		682,414.00	813,718.00
2. Additional Debt Incurred During Year					9,120.00		46,759.00	55,879.00
3. Retirements and Repayments					1,596.00		63,371.00	64,967.00
4. Debt at End of Fiscal Year					138,828.00		665,802.00	804,630.00
5. Accreted Interest at End Of Fiscal Year								
6. Total Debt and Accreted Interest					138,828.00		665,802.00	804,630.00
7. Current Portion P&I - Due within 1 year								
8. Interest Paid during current fiscal year								

LEA : 114064003 Kutztown Area SD

Printed 11/18/2021 4:17:25 PM

Total Principal and Interest Payments Made by Your School - All Funds

Function	Fund		Principal (910)	Principal (920)	Interest (830)	Total (Principal +Interest)	Misc Other Uses (990)
5110	10	General Fund	2,127,480.48		562,640.72	2,690,121.20	
5110	20	Special Revenue Funds					
5110	30	Capital Projects Funds					
5110	40	Debt Service Fund					
5110	90	Permanent Fund					
5120	10	General Fund	6,600,000.00			6,600,000.00	
5120	20	Special Revenue Funds					
5120	30	Capital Projects Funds					
5120	40	Debt Service Fund					
Total Debt Payments - Governmental Funds			\$8,727,480.48		\$562,640.72	\$9,290,121.20	

Function	Fund		Principal (910)	Principal (920)	Interest (830)	Total (Principal +Interest)
5110	50	Enterprise Fund				
5110	60	Internal Service Fund				
5120	50	Enterprise Fund				
5120	60	Internal Service Fund				
Total Debt Payments - Proprietary Funds						

LEA : 114064003 Kutztown Area SD

Printed 11/18/2021 4:17:25 PM

Debt Details
Governmental Funds/ Activities

Debt Category	Debt Issue Date (MM/YYYY)	Principal Amounts Only				Current Portion Due Within One Year (Principal and Interest)	Interest Paid During Fiscal Year
		Debt at Beginning of Fiscal Year	Additions	Reductions / Repayments	Debt at End of Fiscal Year		
General Obligation Bonds/Notes – CIB	06/2021		6,500,000.00		6,500,000.00	206,244.00	
General Obligation Bonds/Notes – CIB	06/2021		5,795,000.00		5,795,000.00	80,551.00	
General Obligation Bonds/Notes – CIB	06/2021		1,035,000.00		1,035,000.00	1,038,197.00	
General Obligation Bonds/Notes – CIB	12/2019	7,740,000.00		945,000.00	6,795,000.00	231,427.00	206,643.91
General Obligation Bonds/Notes – CIB	10/2016	9,165,000.00		212,480.48	8,952,519.52	213,500.00	193,800.00
General Obligation Bonds/Notes – CIB	10/2016	5,455,000.00		5,455,000.00			96,462.50
General Obligation Bonds/Notes – CIB	05/2013	2,115,000.00		2,115,000.00			35,350.00
Compensated Absences		529,122.00	63,560.00	59,659.00	533,023.00	98,778.00	
Other Post-Employment Benefits (OPEB)		6,969,361.00	391,935.00	420,644.00	6,940,652.00		
Net Pension Liability		46,380,586.00	4,604,717.00	4,431,105.00	46,554,198.00		
Totals for Debt Entered:		\$78,354,069.00	\$18,390,212.00	\$13,638,888.48	\$83,105,392.52	\$1,868,697.00	\$532,256.41

Bond Details
Proprietary Funds

Debt Category	Debt Issue Date (MM/YYYY)	Principal Amounts Only				Current Portion Due Within One Year (Principal and Interest)	Interest Paid During Fiscal Year
		Debt at Beginning of Fiscal Year	Additions	Reductions / Repayments	Debt at End of Fiscal Year		
Other Post-Employment Benefits (OPEB)		131,304.00	9,120.00	1,596.00	138,828.00		
Net Pension Liability		682,414.00	46,759.00	63,371.00	665,802.00		
Totals for Debt Entered:		\$813,718.00	\$55,879.00	\$64,967.00	\$804,630.00		

LEA : 114064003 Kutztown Area SD

Printed 11/18/2021 4:17:28 PM

General Fund (10)

Section 1: Tuition/Purchased Services as Reported within Expenditure Detail	Amount
Tuition Reported in General Fund Expenditures 1000-560	2,547,156.04
Purchased Services in General Fund Expenditures 1000-594 and 1000-597	1,314.82
Section 1 Total	\$2,548,470.86

Section 2: Tuition Paid to Institution Types During Fiscal Year	Tuition Paid For Nonspecial Education	Tuition Paid For Special Education	Total
1 1306 Institutions			
2 Institutionalized Children's Programs			
3 Juveniles Incarcerated in Adult Facilities			
4 Residential Treatment Facilities			
5 Other Local Education Agencies	1,935.84	52,553.59	54,489.43
6 Brick and Mortar Charter Schools	574,919.89	219,971.50	794,891.39
7 Cyber Charter Schools	443,382.01	339,936.67	783,318.68
8 Career and Technology Centers	436,878.41	129,026.26	565,904.67
9 Approved Private Schools	814.98	21,889.37	22,704.35
10 PA Chartered Schools for the Deaf and Blind			
11 Private Residential Rehabilitative Institutions			
12 Juvenile Detention Centers			
13 Special Program Jointures			
14 Other Tuition Not Included Elsewhere In This Section	130,810.00	196,352.34	327,162.34
Section 2 Total	\$1,588,741.13	\$959,729.73	\$2,548,470.86

1 .	<u>Student Transportation Services for Educational Field Trips</u>	48.72
2 .	<u>Student Transportation Services for Student Activities</u>	2,856.56
3 .	<u>Rental of Vehicles for Student Transportation Services</u>	
4 .	<u>Capital Reserve Funds</u>	

Include only district-owned transportation expenditures paid from State or local money.
DO NOT include federal expenditures or payments to contract service providers.
Contracted transportation services should not be recorded on this schedule.

LEA : 114064003 Kutztown Area SD

Printed 11/18/2021 4:17:34 PM

Food Service / Cafeteria Operations Fund (51)

3000 Operation of Non-Instructional Services

Total

100 Personnel Services – Salaries	179,547.53
Total Personnel Services – Salaries	\$179,547.53
200 Personnel Services – Employee Benefits	
210 Group Insurance – Contracted Provider	62,909.74
220 Social Security Contributions	13,069.06
230 PSERS Retirement Contributions	31,463.07
260 Workers' Compensation	613.07
280 Other Post-Employment Benefits (OPEB)	10,949.00
299 All Other Employee Benefits	504.34
Total Personnel Services – Employee Benefits	\$119,508.28
300 Purchased Professional and Technical Services	
340 Technical Services	1,866.49
Total Purchased Professional and Technical Services	\$1,866.49
400 Purchased Property Services	
430 Repairs and Maintenance Services	10,677.87
Total Purchased Property Services	\$10,677.87
500 Other Purchased Services	
580 Travel	371.79
591 Services Purchased Locally	20,750.57
599 Other Miscellaneous Purchased Services	28,086.02
Total Other Purchased Services	\$49,208.38
600 Supplies	
610 General Supplies	31,201.20
620 Energy	4,123.49
630 Food	217,479.73
Total Supplies	\$252,804.42
700 Property	
740 Depreciation	13,683.26
Total Property	\$13,683.26
800 Other Objects	
810 Dues and Fees	550.60
890 Miscellaneous Expenditures	903.20
Total Other Objects	\$1,453.80
Total 3000 Operation of Non-Instructional Services	\$628,750.03

LEA : 114064003 Kutztown Area SD

Printed 11/18/2021 4:17:34 PM

Food Service / Cafeteria Operations Fund (51)

3100 Food Services	<u>Elementary</u>	<u>Secondary</u>	<u>Federal</u>	<u>Total</u>
100 <u>Personnel Services – Salaries</u>				
100 Personnel Services – Salaries				179,547.53
Total Personnel Services – Salaries				\$179,547.53
200 <u>Personnel Services – Employee Benefits</u>				
210 Group Insurance – Contracted Provider				62,909.74
220 Social Security Contributions				13,069.06
230 PSERS Retirement Contributions				31,463.07
260 Workers' Compensation				613.07
280 Other Post-Employment Benefits (OPEB)				10,949.00
299 All Other Employee Benefits				504.34
Total Personnel Services – Employee Benefits				\$119,508.28
300 <u>Purchased Professional and Technical Services</u>				
340 Technical Services				1,866.49
Total Purchased Professional and Technical Services				\$1,866.49
400 <u>Purchased Property Services</u>				
430 Repairs and Maintenance Services				10,677.87
Total Purchased Property Services				\$10,677.87
500 <u>Other Purchased Services</u>				
580 Travel				371.79
591 Services Purchased Locally				20,750.57
599 Other Miscellaneous Purchased Services				28,086.02
Total Other Purchased Services				\$49,208.38
600 <u>Supplies</u>				
610 General Supplies				31,201.20
620 Energy				4,123.49
630 Food				217,479.73
Total Supplies				\$252,804.42
700 <u>Property</u>				
740 Depreciation				13,683.26
Total Property				\$13,683.26
800 <u>Other Objects</u>				
810 Dues and Fees				550.60
890 Miscellaneous Expenditures				903.20
Total Other Objects				\$1,453.80
Total 3100 Food Services				\$628,750.03

	<u>Food Service(51)</u>	<u>Child Care Operations(52)</u>	<u>Other Enterprise(58)</u>	<u>Internal Service(60)</u>	<u>Total</u>
3000 <u>Operation of Non-Instructional Services</u>					
3100 Food Services	628,750.03				628,750.03
Total Operation of Non-Instructional Services	\$628,750.03				\$628,750.03
TOTAL ACTUAL EXPENDITURES & OTHER FINANCING USES	\$628,750.03				\$628,750.03

LEA : 114064003 Kutztown Area SD

Printed 11/18/2021 4:17:50 PM

Fund	School	School Number	Local Personnel	Local Nonpersonnel	State Personnel	State Nonpersonnel	Federal Personnel	Federal Nonpersonnel	Total	Explanation
10										
	Greenwich-Lenhartsville El Sch	810	2,925,302.47	695,733.41	1,150,163.38	273,546.79	121,977.91	38,069.83	5,204,793.79	
	Kutztown Area MS	6315	3,959,770.71	1,049,866.57	1,556,893.12	412,784.01	92,896.78	100.00	7,072,311.19	
	Kutztown Area SHS	816	5,165,439.00	1,733,881.93	2,030,934.87	681,723.53	184,373.06	13,675.19	9,810,027.58	
	Kutztown El Sch	6316	4,171,766.69	1,176,985.63	1,640,245.19	462,764.38	265,404.34	30,601.19	7,747,767.42	
Total			16,222,278.87	4,656,467.54	6,378,236.56	1,830,818.71	664,652.09	82,446.21	29,834,899.98	