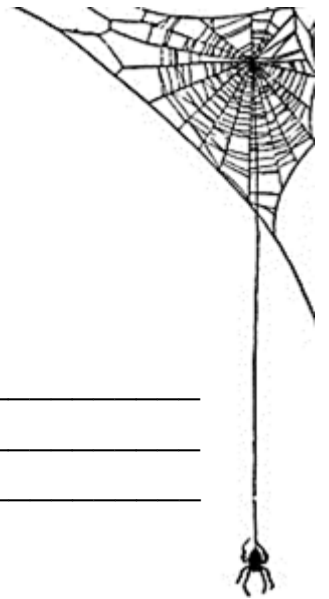




# ATHENA

## THE GREY-EYED GODDESS



Why did Zeus swallow Metis, his first queen?

---

---

---

How was the young goddess Athena born from Zeus's head?

---

---

---

Why did Athena leave Mount Olympus to train at Triton's camp for warriors?

---

---

---

How did Athena defeat Pallas, the leader of the Gigantes?

---

---

---

Why was Athena so furious with her priestess Medusa?

---

---

---

How did Athena punish Medusa and her sisters?

---

---

---

How did King Polydektos plan to get rid of Perseus?

---

---

---



How did Athena and Hermes help Perseus during his quest?

---

---

---

How did Perseus force the Grey Sisters to tell him where he could find Medusa's lair?

---

---

---

How does Perseus cut off Medusa's head without looking her in the eyes?

---

---

---

How does Perseus use Medusa's head to rescue Princess Andromeda from Cetus, the sea monster?

---

---

---

Why was Athena offended by the scenes featured in Arachne's tapestry?

---

---

---

How does Athena punish Arachne for being so foolish?

---






---

---

# CHARACTER DESCRIPTIONS

Use the words and phrases below to write descriptions for the characters from the myth. One has been done for you already.

Goddess of Wisdom	skillful	deceitful	King of the Gods
all-knowing	narrators	bloodthirsty	inventive
Spinners of Destiny	God of War	helpful	father of Athena
God of the Forge	fearless	giant-slayer	the Moirae
Athena's half-brother	vengeful	suffered	blacksmith

 <p>ZEUS</p>	<p><i>Zeus was the <u>King of the Gods</u> and the <u>father of Athena</u>. He was <u>deceitful</u> when he tricked his wife Metis into transforming herself into a dragonfly so that he could swallow her. Zeus <u>suffered</u> from a painful headache until Athena was released from his head.</i></p>
 <p>ATHENA</p>	<hr/> <hr/> <hr/> <hr/>
 <p>ARES</p>	<hr/> <hr/> <hr/> <hr/>
 <p>HEPHAISTOS</p>	<hr/> <hr/> <hr/> <hr/>
 <p>THE FATES</p>	<hr/> <hr/> <hr/> <hr/>

