



Guests:

**SCHRADERGROUP ARCHITECTURE
D'HUY ENGINEERING, INC.**



Facilities Committee Meeting

August 1, 2019



FACILITIES COMMITTEE AGENDA



Energy Management Update

- Energy Performance Report Update



Security Update

- Work in Progress



Facilities Improvements Projects Update

- New Newtown Middle School
- Holland Middle School Additions and Renovations
- Wrightstown Elementary School Additions and Renovations
- Rolling Hill Elementary School Additions and Renovations
- Sol Feinstone Elementary School Additions and Renovations
 - **SCHRADER**GROUP architecture – Schematic Design Review
- New ACHIEVE-Sloan-Twilight Facility
 - Renaming Considerations and Timing
- CRHS South and North Synthetic Turf Projects

FACILITIES COMMITTEE AGENDA



Capital Improvements Projects Update

- 2019 Capital Improvements Project Update



Miscellaneous

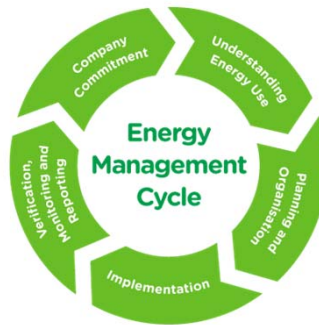
- Newtown Borough Street Improvements
- Facilities Use Fees

Board Agenda Items

Public Comments



Energy Management Update



Energy Management Update

Aramark Monthly Energy Reporting



- **Reports for the month of March, April and May 2019 are included in this update.**
 - Reports include NMS and HMS which have been added back into reporting with a baseline period ending August 2018
 - NMS and HMS baselines will be reset once a full operating year has been completed (target date is 31AUG19).
 - Wrightstown has been removed but will be added back in August 2019
 - Rolling Hills Elementary School will be removed from the report.

Energy Management Update

Aramark Monthly Energy Reporting



March 2019

Council Rock School District

March 2019 District Performance Overview:

Baseline ENERGY STAR Score	19	Current ENERGY STAR Score	62
Baseline Energy Use Intensity (kBtu/GSF)	38	Current Energy Use Intensity (kBtu/GSF)	61

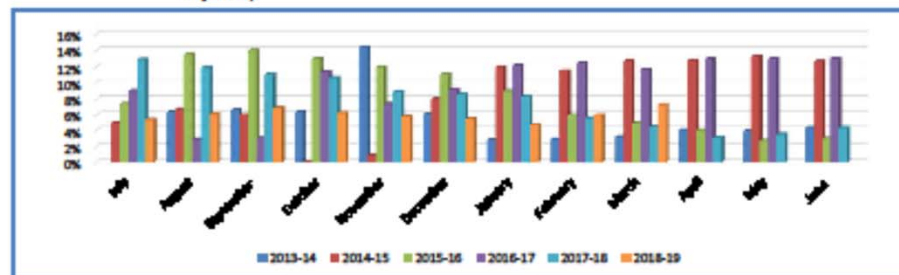
Current District Averages:

Current Total Cost per Gross
Square Foot (\$/GSF)

\$0.94

Current Total Adjusted Consumption
Increase from Baseline Year (weather
adjusted)

7.3%



- Notes:
- 1 - Current performance is a 12 month total ending with the month listed for the report. Energy Use Index is based on actual utility consumption. Percent Reduction is based on weather normalized consumption to eliminate unknowns due to weather.
 - 2 - Baseline information is based on data from Fiscal Year (FY) 2010. With the exception of Holland El., Goodnoe El., and Churchville El. Whose baselines have been reset to FY 2015. Sol Feinstone El.'s baseline has been updated to the 12 month period ending August 2015. Holland and Newtown Middle School have a baseline period ending August 2018.
 - 3 - Holland Middle School and Newtown Middle Schools have been added back to the performance with a baseline period ending 8/31/2018. This will need to be reset once a full operating year has been completed (8/31/2019).
 - 4 - Wrightown Elementary School has been removed from performance during the renovations that are taking place during the 2018/19 school year.

Energy Management Update

Aramark Monthly Energy Reporting



April 2019

Council Rock School District

April 2019 District Performance Overview:

Baseline ENERGY STAR Score	19	Current ENERGY STAR Score	63
Baseline Energy Use Intensity (kBtu/GSF)	38	Current Energy Use Intensity (kBtu/GSF)	60

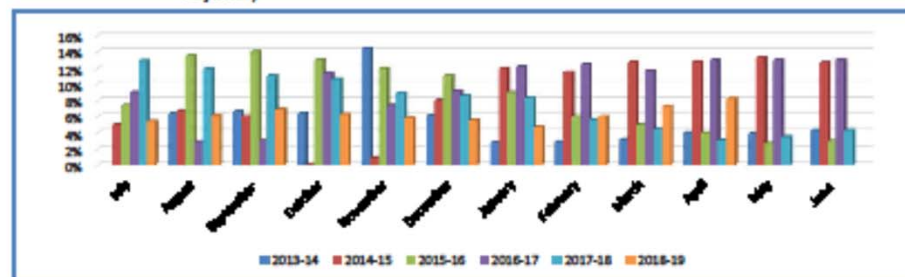
Current District Averages:

Current Total Cost per Gross
Square Foot (\$/GSF)

\$0.93

Current Total Adjusted Consumption
Increase from Baseline Year (weather
adjusted)

8.2%



- Notes:
- 1 - Current performance is a 12 month total ending with the month listed for the report. Energy Use Index is based on actual utility consumption. Percent Reduction is based on weather normalized consumption to eliminate unknowns due to weather.
 - 2 - Baseline information is based on data from Fiscal Year (FY) 2010. With the exception of Holland El., Goodnoe El., and Churchville El. Whose baselines have been reset to FY 2015. Sol Feinstone El.'s baseline has been updated to the 12 month period ending August 2015. Holland and Newtown Middle School have a baseline period ending August 2018.
 - 3 - Holland Middle School and Newtown Middle Schools have been added back to the performance with a baseline period ending 8/31/2018. This will need to be reset once a full operating year has been completed (8/31/2019).
 - 4 - Wrightown Elementary School has been removed from performance during the renovations that are taking place during the 2018/19 school year.

Energy Management Update

Aramark Monthly Energy Reporting



May 2019

Council Rock School District

May 2019 District Performance Overview:

Baseline ENERGY STAR Score	19	Current ENERGY STAR Score	67
Baseline Energy Use Intensity (kBtu/GSF)	38	Current Energy Use Intensity (kBtu/GSF)	59

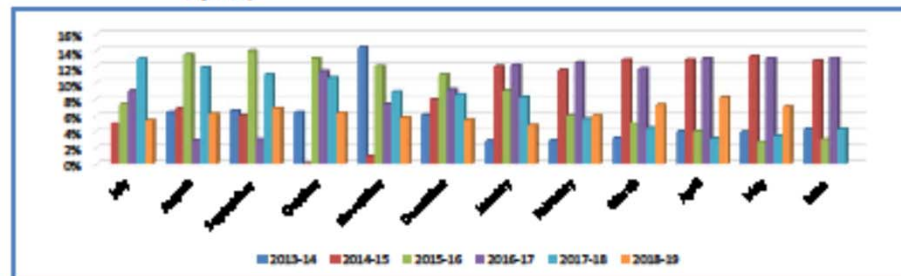
Current District Averages:

Current Total Cost per Gross
Square Foot (\$/GSF)

\$0.92

Current Total Adjusted Consumption
Increase from Baseline Year (weather
adjusted)

7.1%



Notes:

- 1 - Current performance is a 12 month total ending with the month listed for the report. Energy Use Index is based on actual utility consumption. Percent Reduction is based on weather normalized consumption to eliminate unknowns due to weather.
- 2 - Baseline information is based on data from Fiscal Year (FY) 2010. With the exception of Holland El., Goodnoe El., and Churchville El. Whose baselines have been reset to FY 2015. Sol Feinstone El.'s baseline has been updated to the 12 month period ending August 2015. Holland and Newtown Middle School have a baseline period ending August 2018.
- 3 - Holland Middle School and Newtown Middle Schools have been added back to the performance with a baseline period ending 8/31/2018. This will need to be reset once a full operating year has been completed (8/31/2019).
- 4 - Wrightstown Elementary School will be added back to the performance with a baseline period ending 8/31/2019. This will need to be reset once a full operating year has been completed (8/31/2020).
- 5 - Rolling Hills Elementary School is closed for renovation beginning June 2019. It will be excluded from performance beginning June 2019 - August 2020.

Notes:

1. RHES removed in June
2. Former RMS excluded
3. WES included in September

Security Update



Safety and Security Update

Work in progress, including but not limited to:



- **Grant Opportunities**
(PDE Safe Schools Targeted Equipment Grant):
 - ✓ Video Intercom Systems **\$25,000**
Submission in progress
- **CRSD Critical Incident Response Guide Update:**
 - ✓ Updating the response guide with current resources and contact information
 - ✓ Newly added programs such as ALICE and Safe2say Something
 - ✓ Printing completed – Ready for distribution

Safety and Security Update

Work in progress, including but not limited to:



- **Capital Projects:**
 - ✓ **Classroom Intrusion Hardware Project**
 - Work in progress
 - **Schools:** CES, HCES, HES, MMWES, NES, GES, RES, SFES, RMS
 - ✓ **Video Intercom Systems Project**
 - Work in progress
 - All Schools
 - ✓ **Chancellor Center Security Project**
 - Work in progress
 - Access control and gate replacement at lobby

Safety and Security Update

Work in progress, including but not limited to:



- **Camera Upgrades and Added Cameras:**
 - ✓ **Churchville ES Int. & Ext. Camera Additions**
 - Four (4) total cameras including install, commissioning and licensing fees
 - Addition of two exterior cameras
 - **\$12,943.00 (Costars Purchase)**
 - ✓ **Newtown MS Relocation of Remote Releases**
 - Relocation of release station from original project
 - Addition of new station at second location
 - **\$1,045.00 (Costars Purchase)**

Safety and Security Update

Work in progress, including but not limited to:



- **Camera Upgrades and Added Cameras:**
 - ✓ **CRHS South Int. & Ext. Camera Additions**
 - Thirty-seven (37) total cameras including install, commissioning and licensing fees
 - Addresses all stair towers, parking & select blind spots
 - **\$73,581.00 (Costars Purchase)**
 - ✓ **Re-IP address Access Control Panels Districtwide**
 - Re-IP address control panels (separate from IT network)
 - Test for communications with Brivo servers
 - Burger and Fire alarm systems will be reviewed next
 - **\$2,891.00 (Costars Purchase)**

Safety and Security Update

Work in progress, including but not limited to:



- **Camera Upgrades and Added Cameras:**
 - ✓ **Additional Video Phone Units**
 - Original proposal included one phone per school
 - Proposal includes unit price of \$410 per device
 - 20 additional units required (includes 3 stock devices)
 - Allows incoming call to ring through several phone extensions should a desk be vacated
 - **~\$8,300 (Costars Purchase)**

Funding for Security Projects: 26 Maintenance Security Budget (\$90,460.00)

Funding for Video Phones: 22 Capital Reserves Budget (~\$8,300.00)

Facilities Improvements Projects Update



New Newtown Middle School Project (Demolition and Site Work)

Construction Update



Facilities Improvements Project Updates

New Newtown Middle School – Demolition and Site Work

BRESLIN RIDYARD FADERO ARCHITECTS



- Site restoration complete
- Parking lot final section of paving complete
- Final accounting of contracts and closeout
- Finalize closeout with Township – reduce escrow for 18 month warranty period

Holland Middle School Additions and Renovations Project

Miscellaneous Issues



Facilities Improvements Project Updates

Holland Middle School Add and Reno – Miscellaneous Items

SCHRADERGROUP



- **HVAC Issues – Pressurization in primary and secondary hydronic piping loops**
 - Trouble shooting issues with HVAC system designer, controls contractor and commissioning agent.
 - Requested mechanical contractor to perform review system installation
 - Interim bypass to allow system pressures to remain within design parameters
 - Investigations performed 03JUN19, all relevant parties in attendance
 - Corrective actions being investigated by CEI
- **Stormwater run-off at walking path from Buck Road to school**
 - During heavy rain events the BCCD required rain garden shed water over the walking path challenging walkers to access the site via the path
 - Considering options which may require BCCD involvement
 - Cost to be determined by option selected
- **Project closeout**
 - Site punch list items

Wrightstown Elementary School Additions and Renovations Project

Construction Update



Facilities Improvements Project Updates

Wrightstown Elementary School Add and Reno – Miscellaneous Items

SCHRADERGROUP



- **Work complete, outstanding items include, but are not limited to:**
 - Addressing punch list items
 - Finalizing Library shelving and computer furniture - modifications
 - Relocated WES from the former RMS
 - New furnishings delivered and set-up
 - Ready for staff to set-up classrooms
 - Board of School Directors tour 25JUL19
 - Student and Parent tours being planned for AUG
 - Student Orientations planned for 29AUG19
- **Project Budget:**
 - FFE budget exhausted after addressing the Smartboard issue
 - Project contingency remains in place and will be utilized to address miscellaneous costs through project completion, such as:
 - Kiln
 - Change Order adjustments (if necessary)
 - Remaining Contingency monies should be considered for RHES to address Smartboard purchases (3x cost of projectors previously budgeted before learning of technology changes).

Rolling Hills Elementary School Additions and Renovations Project

Construction Update



Facilities Improvements Projects Update

Rolling Hills Elementary School Add and Reno – Construction Update

SCHRADERGROUP



- Site work commenced on 03JUN19
- Building was vacated and emptied 25JUN19 through 02JUL19
- RHES now occupies the former RMS through July 2020
- Building Demolition and Roof Removal commenced on 01JUL19
- Asbestos Abatement commenced on 10JUL19 (Phase I complete and cleared)
- Administrative Procedures:
 - Bi-Weekly Job Conferences
 - Weekly Superintendent Meetings
 - Weekly Building Information Modeling (BIM) Modeling
 - Submittal Process and procuring materials
- Land Development Agreements fully executed and delivered to Northampton Township, including checks, on 25JUL19:
 - Escrow: \$ 64,210.53
 - Permit: \$156,500.00



Facilities Improvements Projects Update

Rolling Hills Elementary School Add and Reno – Construction Update

SCHRADERGROUP



RHES CONSTRUCTION KEY MILESTONE DATES

DATE	ACTIVITY
01JUL19	Commence with demolition activities
08JUL19	Completed demolition of roofing system
19JUL19	Completed Phase I environmental remediation and clearances

Missed Milestone	
12JUL19	Completion of underground stormwater detention system (PBI notified and addressing with contractor)



Facilities Improvements Projects Update

Rolling Hills Elementary School Add and Reno – Construction Update

SCHRADERGROUP



MILESTONE SCHEDULE

03JUN19	Ground Breaking – Site Work Only
25JUN19	CRSD Vacates RHES
01JUL19	Moving Contractor Completes Move to Former RMS
01JUL19	Renovations, Additions and Mobilization Commence
01JUL20	Final Completion of Construction Activities
05JUL20	Furnish RHES and Relocate Teaching Materials from Former RMS
01AUG20	Staff and Students Occupy Renovated and Expanded RHES



Capital Improvements Projects Update

Rolling Hills Elementary School – Construction Progress Photos

Vacated building and removed all district belongings

SCHRADERGROUP



D'HUY Engineering, Inc.



Capital Improvements Projects Update

Rolling Hills Elementary School – Construction Progress Photos

Excavations for underground stormwater management

SCHRADERGROUP



D'HUY Engineering, Inc.



Capital Improvements Projects Update

Rolling Hills Elementary School – Construction Progress Photos

Installation of underground stormwater management system

SCHRADERGROUP



D'HUY Engineering, Inc.



Capital Improvements Projects Update

Rolling Hills Elementary School – Construction Progress Photos

Quality Assurance/Quality Control – Reinforcing cages, base plates & concrete test cylinders

SCHRADERGROUP



D'HUY Engineering, Inc.



Capital Improvements Projects Update

Rolling Hills Elementary School – Construction Progress Photos

Foundations and piers for additions (Cafeteria addition)

SCHRADERGROUP



D'HUY Engineering, Inc.



Capital Improvements Projects Update

Rolling Hills Elementary School – Construction Progress Photos

Structural roof infill at existing openings – Capturing exterior space for Classrooms

SCHRADERGROUP



D'HUY Engineering, Inc.



Capital Improvements Projects Update

Rolling Hills Elementary School – Construction Progress Photos

Responsible recycling (LEED Gold Certification) – Required to recycle > 75% of const. waste

SCHRADERGROUP



D'HUY Engineering, Inc.



Capital Improvements Projects Update

Rolling Hills Elementary School – Construction Progress Photos

Rooftop units removed for recycling with value credited to district waste contract

SCHRADERGROUP



D'HUY Engineering, Inc.



Capital Improvements Projects Update

Rolling Hills Elementary School – Construction Progress Photos

Demolition activities ongoing – Phase 1 environmental remediation complete

SCHRADERGROUP



D'HUY Engineering, Inc.



Capital Improvements Projects Update

Rolling Hills Elementary School – Construction Progress Photos

Demolition activities ongoing – Phase 1 environmental remediation complete

SCHRADERGROUP



D'HUY Engineering, Inc.



Sol Feinstein Elementary School Additions and Renovations Project

Design Phase Update



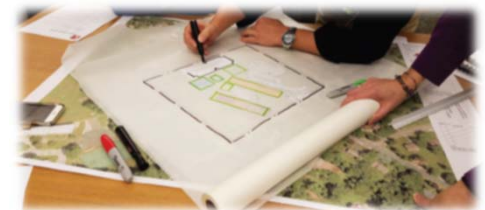
Facilities Improvements Projects Update

Sol Feinstone Elementary School Add and Reno – Design Update

SCHRADERGROUP



- Preliminary domestic well testing performed
- Conducted kick-off team meeting on 01MAY19
- Conducted Programing Meetings with SGA, SFES principal, department heads and select staff on 20 and 24MAY19 – Used info to develop Program and Schematic Design
- Terraform Engineers team performed site survey, including utility locator services – Prepared 'existing conditions' site plan including boundaries
- Developed DRAFT project schedule to establish key milestone dates, including, but not limited to:
 - ✓ Meetings with Upper Makefield Township PC, BOS and ZHB
 - ✓ Submissions to BCCD, NBCMA, PADOT and Township
 - ✓ **Facilities and Board Meetings**
 - **Schematic Design Concept: 01AUG19 FACCOM**
 - **PlanCon Approvals: 22AUG19**
- Developed DRAFT Project Budget (\$30M)
- E2S performed investigations – July
- SGA & Team surveying building and site July/Aug
- **Consider summer remediation phase at pipe chases**
- **DEI developed draft phasing plan – No temp CR's**



Facilities Improvements Projects Update

Sol Feinstone Elementary School Add and Reno – Design Update

SCHRADERGROUP



Key Schematic Design Programming Requirements

Programming and other considerations include, but are not limited to the following:

General:

- Increase classroom count to facilitate five (5) additional classrooms
- Future student capacity = 875 students
- Existing building renovations = 78,450 SF
- New construction = 21,495 SF
- Total renovations and additions = **99,945 SF**
- Increase in parking of approximately 40 spaces
- Increase in event parking of approximately 75 spaces (includes 40 noted)
- Project includes allowances for PennDOT, electric service and env remediation
- ACE grant process remains closed – not pursuing LEED Gold certification

Facilities Improvements Projects Update

Sol Feinstone Elementary School Add and Reno – Design Update

SCHRADERGROUP



Key Schematic Design Programming Requirements

Programming considerations include, but are not limited to the following:

Interior Spaces:

- Collect and locate administrative spaces adjacent to building entry (administrative offices, nurse and guidance suites)
- Increase size of substandard spaces to meet current standards (includes, but not limited to support spaces, music programs and select classrooms)
- Increase size of kitchen and serving areas
- Improve building services entry at same location
- Increase library instructional area
- Add stage to gymnasium to provide appropriate size and to increase student capacity in the cafeteria (studied stage addition at cafeteria) **Potential**

Alternate Bid consideration

- Select most sustainable finishes throughout
- Address vertical circulation issues at two-story classroom wing

Facilities Improvements Projects Update

Sol Feinstone Elementary School Add and Reno – Design Update

SCHRADERGROUP



Key Schematic Design Programming Requirements

MEP:

- Provide energy efficient facility including LED lighting, high efficiency propane fired boilers, air cooled chillers, automated building management system, low flow plumbing fixtures, etc.
- Replace on-site septic system including leach field in compliance with DEP
- Maintain on-site well for domestic water supply, replace well pumps and controls
- Provide underground fire storage tank including pumps and fire protection system
- Remove #2 fuel oil and replace with underground propane tanks for boilers and kitchen equipment
- Replace electrical service from Eagle Road to school
- Upgrade emergency generation system including emergency lighting and life safety, fire protection system, well pumps, sanitary pumps, boiler pumps, refrigerator and freezer and other select systems.

Facilities Improvements Projects Update

Sol Feinstone Elementary School Add and Reno – Design Update

SCHRADERGROUP



Key Schematic Design Programming Requirements

Site:

- Eliminate current exit drive and relocate to improve safe sight lines (PennDOT)
- Create separate parent drop-off/pick-up from bus traffic
- Create safe student drop-off zones with clear access to building entry
- Create secondary student entry for new bus drop-off lane
- Relocate building services from front of building to less visible area
- Increase parking spaces and provide additional overflow parking for evening events
- Provide internal sidewalks to improve safe site circulation for cars, buses and pedestrians
- Create mechanical corral to conceal emergency generator, transformer, chillers, fire pumps, etc.
- Provide alternate bid for outdoor teaching space similar to CES, HES, WES and RHES
- Minimize impact to neighboring athletic fields (loss of one field)
- Improve site lighting including LED parking lot fixtures, security lighting and illuminate key sidewalks for safe access during evening events

Facilities Improvements Projects Update

Sol Feinstone Elementary School Add and Reno – Overall Site Plan

SCHRADERGROUP



D'HUY Engineering, Inc.



SCHRADERGROUP

181 Lantigua Ave. Suite 100
Philadelphia, PA 19127
T 215 482 4400
F 215 482 7461
www.sgim.com

Consultants:
D.H. Smith & Associates, LLC
Terraform Engineering LLC
One East Broad Street, Suite 300,
Bethlehem, PA 18018

Professional Seal:

Owner:
Council Rock School District
30 N. Chesham Street
Newtown, PA 18940

Additional and Related to:
**SOL FEINSTONE
ELEMENTARY SCHOOL**

1000 Eagle Road
Newtown, PA 18940

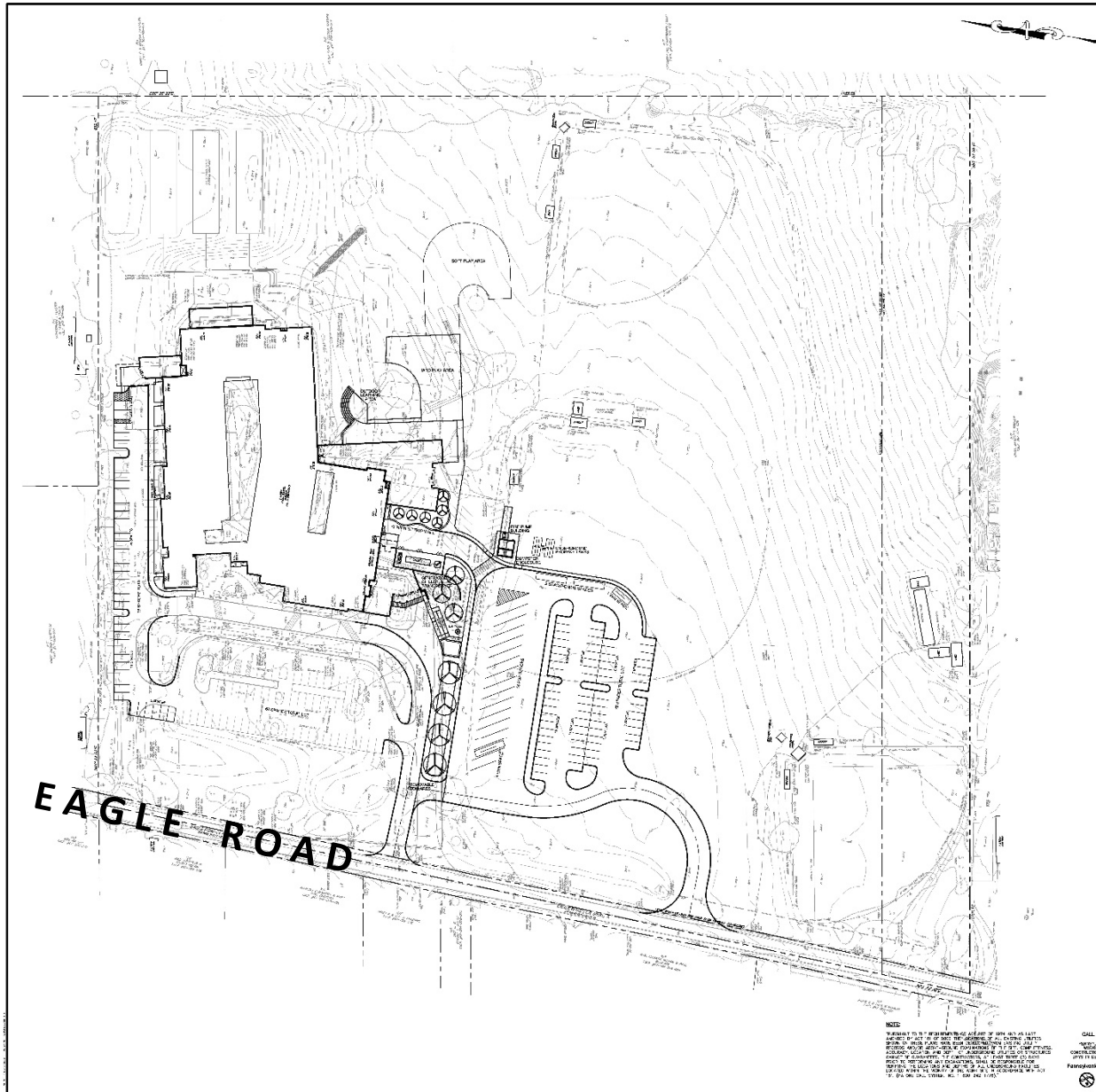
NO.	DESCRIPTION	DATE

DATE: 07/20/2019
SGA PROJECT NUMBER: SK-402

Key Plan:

Drawing Title:
Sketch Plan

Drawing Number:
SK-4.02



SITE DATA

PROJECT LOCATION: 1000 EAGLE ROAD, NEWTOWN, PA 18940
OWNER: COUNCIL ROCK SCHOOL DISTRICT
DATE: 07/20/2019
SCALE: 1" = 40' (PLAN)
SCALE: 1" = 80' (SECTION)

GENERAL DATA

PROJECT LOCATION: 1000 EAGLE ROAD, NEWTOWN, PA 18940
OWNER: COUNCIL ROCK SCHOOL DISTRICT
DATE: 07/20/2019
SCALE: 1" = 40' (PLAN)
SCALE: 1" = 80' (SECTION)

PARKING REQUIREMENTS

PER COUNCIL ROCK SCHOOL DISTRICT
1 SPACE PER 100 SF OF GROSS FLOOR AREA
2 SPACES PER 100 SF OF GROSS FLOOR AREA
3 SPACES PER 100 SF OF GROSS FLOOR AREA
4 SPACES PER 100 SF OF GROSS FLOOR AREA
5 SPACES PER 100 SF OF GROSS FLOOR AREA
6 SPACES PER 100 SF OF GROSS FLOOR AREA
7 SPACES PER 100 SF OF GROSS FLOOR AREA
8 SPACES PER 100 SF OF GROSS FLOOR AREA
9 SPACES PER 100 SF OF GROSS FLOOR AREA
10 SPACES PER 100 SF OF GROSS FLOOR AREA

NOTES

1. ALL DIMENSIONS ARE IN FEET AND INCHES.
2. ALL DIMENSIONS ARE TO FACE UNLESS NOTED OTHERWISE.
3. ALL DIMENSIONS ARE TO FACE UNLESS NOTED OTHERWISE.
4. ALL DIMENSIONS ARE TO FACE UNLESS NOTED OTHERWISE.
5. ALL DIMENSIONS ARE TO FACE UNLESS NOTED OTHERWISE.
6. ALL DIMENSIONS ARE TO FACE UNLESS NOTED OTHERWISE.
7. ALL DIMENSIONS ARE TO FACE UNLESS NOTED OTHERWISE.
8. ALL DIMENSIONS ARE TO FACE UNLESS NOTED OTHERWISE.
9. ALL DIMENSIONS ARE TO FACE UNLESS NOTED OTHERWISE.
10. ALL DIMENSIONS ARE TO FACE UNLESS NOTED OTHERWISE.

CALL BEFORE YOU DIG

800-243-1776

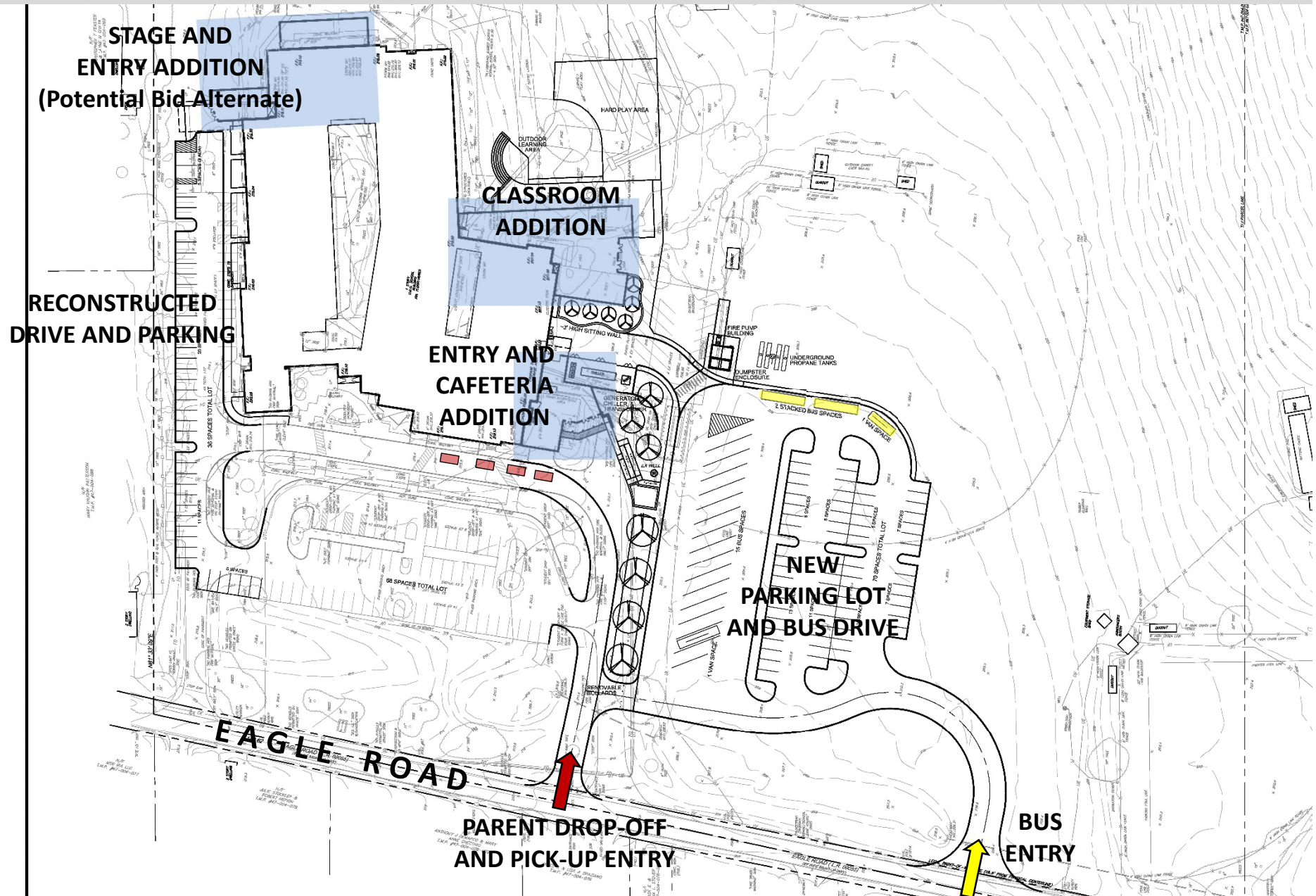
GRAPHIC SCALE



Facilities Improvements Projects Update

Sol Feinstone Elementary School Add and Reno – Enlarged Site Plan

SCHRADERGROUP



Facilities Improvements Projects Update

Sol Feinstone Elementary School Add and Reno – Floor Plan (Additions)

SCHRADERGROUP



D'HUY Engineering, Inc.

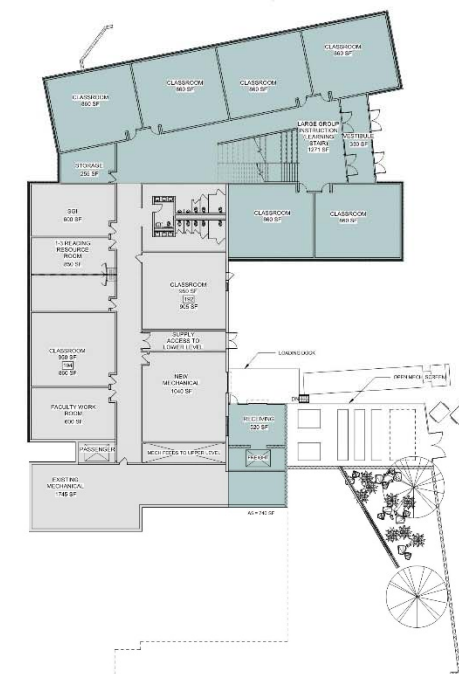


1 FIRST FLOOR

Prop: 1/16" = 1'-0"

EXISTING AND PROPOSED

Sol Feinstone Elementary School
Council Rock School District
1090 Eagle Rd, Newtown PA, 18940



2 GROUND FLOOR

Prop: 1/16" = 1'-0"

SCHRADERGROUP

7-30-2019

Scale: 1/16" = 1'-0"



Facilities Improvements Projects Update

Sol Feinstone Elementary School Add and Reno – Overall Floor Plan

SCHRADERGROUP



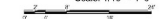
FIRST FLOOR AND GROUND FLOOR PLANS

Sol Feinstone Elementary School
 Council Rock School District
 1090 Eagle Rd, Newtown PA, 18940

SCHRADERGROUP

7-15-2019

Scale: 1/16" = 1'-0"



Facilities Improvements Projects Update

Sol Feinstone Elementary School Add and Reno – Design Update

SCHRADERGROUP



PRELIMINARY PROJECT BUDGET UPDATE

Item	Budget	Comments
General Construction	\$15,560,578	Includes new/existing, reno, site work and equip.
HVAC Construction	\$3,997,800	
Electrical Construction	\$3,498,075	
Plumbing Construction	\$1,499,175	
Environmental Remediation	\$235,464	
Total Construction Costs	\$24,791,092	
Testing, Professional Fees (5.7% of construction costs), Permits & Utilities	\$3,046,170	
Furniture, Fixtures & Equipment	\$800,000	
Construction Contingency	\$1,362,738	
Total Soft Costs	\$5,208,908	Excludes financing
TOTAL ESTIMATE OF PROBABLE COSTS	\$30,000,000	

Facilities Improvements Projects Update

Sol Feinstone Elementary School Add and Reno – Design Update

SCHRADERGROUP



PRELIMINARY LAND DEVELOPMENT SCHEDULE – TOWNSHIP MEETINGS (Updated 16JUL19)

ACTIVITY	DATE
Sketch Review – Upper Makefield Township Planning Commission	25SEP19
Sketch Review – Upper Makefield Township Board of Supervisors	15OCT19
Preliminary Approval – Upper Makefield Township Planning Commission	27NOV19
Preliminary/Final Approval – Upper Makefield Township PC (If Required)	22JAN20
Zoning Hearing Board Meeting – Upper Makefield Township	28JAN20
Conditional Approval – Upper Makefield Township Board of Supervisors	18FEB20

Notes:

- Meeting dates are subject to change based on Township holiday schedules and responses to respective meetings.*
- Meeting times are as follows:*
 - Planning Commission 7:00pm*
 - Board of Supervisors 7:30pm*
 - Zoning Hearings 7:00pm*

Facilities Improvements Projects Update

Sol Feinstone Elementary School Add and Reno – Design Update

SCHRADERGROUP



PRELIMINARY PROJECT SCHEDULE – (Updated 16JUL19)

Activity	Start	Finish
Schematic Design (FACCOM and Board approval)	01JUL19	22AUG19
Lan Development Approvals	03JUN19	06JUL20
Design Development	02AUG19	10JAN20
Construction Documents	06JAN20	24APR20
Bidding Phase	15APR20	03JUL20
Construction Phase	01OCT20	15AUG23
Construction Phase I (Remediation – Pipe Chases) TBD	30JUN20	15AUG20

Notes:

- Dates are subject to changed based upon responses from governing authorities, PennDOT, utility providers, BCCD, etc.*
- Phase I remediation activities are to be determined (TBD).*
- Phase I construction activities include construction of new classroom wing which allows for the elimination of temporary modular classrooms.*

New ACHIEVE-Sloan-Twilight Facility

Design Phase Update



Facilities Improvements Projects Update

New ACHIEVE-Sloan-Twilight Facility – Design Update

BRESLIN RIDYARD FADERO ARCHITECTS



- Conducted kick-off team meeting on 01MAY19
- Conducted Programing Meetings with BRF, department heads and select staff on 13MAY19 – Use info to develop Schematic Design
- Terraform Engineers team performed site survey at former RMS, including utility locator services – developing 'existing conditions' site plan including boundaries
- Developed DRAFT project schedule to establish key milestone dates, including, but not limited to:
 - ✓ Meetings with Northampton Township
 - ✓ Submissions to BCCD, NBCMA and Township
 - ✓ Facilities and Board Meetings
 - Schematic Design Concept
 - ✓ Schematic Site Design (Reviewed at 06JUN19 FACCOTM)
 - ✓ Building Schematic Design (Reviewed 06JUN19 FACCOTM)
 - PlanCon Approvals

Facilities Improvements Projects Update

New ACHIEVE-Sloan-Twilight Facility – Design Update

BRESLIN RIDYARD FADERO ARCHITECTS

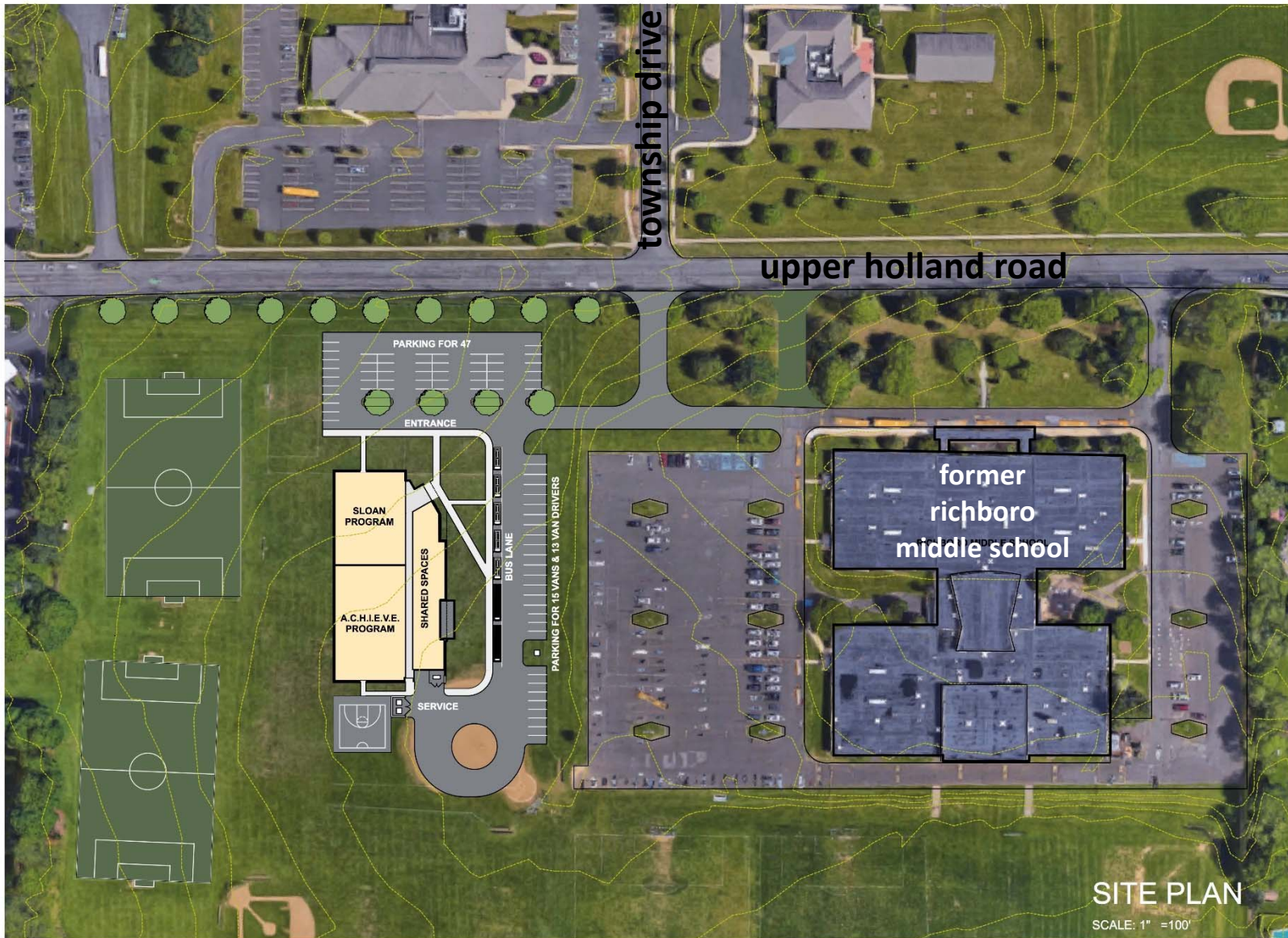


- Developed DRAFT project budget
- Developed updated program
- Earth Engineering, Inc. performed geotechnical investigations
- **Informal discussions with Northampton Township surrounding schematic planning:**
 - ✓ Design site with future subdivision in mind such as building setbacks
 - ✓ Establish separate site entrance (opposite Township Dr.) – future signal
 - ✓ Extend new utilities from Upper Holland Road (water, sewer, fire)
 - ✓ Consider 'village overlay' district
 - ✓ Maximize green space
- **Exterior elevations/Renderings to be reviewed at 05SEP19 FACCOM Mtg:**
 - ✓ Exterior design will respect 'village overlay' requirements
- **ACHIEVE-Sloan-Twilight (LSAC) renaming considerations**
 - ✓ Suggestion to rename during design phase
 - ✓ Names for consideration include:
 - STAR Center
 - Council Rock Richboro Center
 - ✓ Timeline: Board approval at 19SEP19 Board Meeting
 - ✓ Allows BRF Architects time to incorporate into new building design

Facilities Improvements Projects Update

New **ACHIEVE-Sloan-Twilight Facility** – Schematic Design (30JUL19)

BRESLIN RIDYARD FADERO ARCHITECTS



A.C.H.I.E.V.E. - SLOAN - TWILIGHT PROGRAMS
COUNCIL ROCK SCHOOL DISTRICT
JULY 17, 2019

BRESLIN RIDYARD FADERO ARCHITECTS

A-1

Facilities Improvements Projects Update

New ACHIEVE-Sloan-Twilight Facility – Schematic Design (30JUL19)

BRESLIN RIDYARD FADERO ARCHITECTS



LEGEND

	SLOAN PROGRAM SPACES
	TWILIGHT PROGRAM SPACES
	A.C.H.I.E.V.E. PROGRAM SPACES HIGH FUNCTIONING
	A.C.H.I.E.V.E. PROGRAM SPACES LOW FUNCTIONING
	SHARED PROGRAM SPACES
	NON-PROGRAMMED BUILDING SUPPORT SPACES

AREA: 26,413 SQUARE FEET



A.C.H.I.E.V.E. - SLOAN - TWILIGHT PROGRAMS
COUNCIL ROCK SCHOOL DISTRICT
JULY 17, 2019
BRESLIN RIDYARD FADERO ARCHITECTS

A-2

Facilities Improvements Projects Update

New ACHIEVE-Sloan-Twilight Facility – Design Update

BRESLIN RIDYARD FADERO ARCHITECTS



PRELIMINARY LAND DEVELOPMENT SCHEDULE – TOWNSHIP MEETINGS (Updated 16JUL19)

ACTIVITY	DATE
Sketch Review – Northampton Township Planning Commission	Not Required (1)
Sketch Review – Northampton Township Board of Supervisors	Not Required (1)
Preliminary Approval – Northampton Township Planning Commission	10SEP19
Waiver Review – Northampton Township Board of Supervisors	25SEP19
Zoning Hearing Board Meeting – Northampton Township	28OCT19
Preliminary/Final Approval – Northampton Township PC (If Required)	05NOV19
Conditional Approval – Northampton Township Board of Supervisors	18DEC19

Notes:

1. *The Township managed the sketch submission via electronic submission.*
2. *Meeting dates are subject to change based on Township holiday schedules and responses to respective meetings.*
3. *Meeting times are as follows:*
 - A. *Planning Commission 7:30pm*
 - B. *Zoning Hearings 7:00pm*
 - C. *Board of Supervisors 7:30pm*

CRHS South and North Synthetic Turf and Track Restoration Projects

Design Phase Update



Facilities Improvements Projects Update

CRHS South and North Synthetic Turf Field Projects – Design Update



- Conducted kick-off team meeting on 01MAY19
- Programing Meeting with AD's and select staff upcoming
- Terraform Engineers team performed site survey at CRHS North and South – will develop 'existing conditions' site plan including boundaries
- Developing DRAFT project schedule to establish key milestone dates, including, but not limited to:
 - ✓ Meetings with Northampton Township
 - ✓ Submissions to BCCD and Township
 - ✓ Facilities and Board Meetings
 - **Schematic Design Concept**
 - ✓ Schematic Site Design reviewed at 06JUN19 FACCOTM
 - PlanCon Approvals



Facilities Improvements Projects Update

CRHS South and North Synthetic Turf Field Projects – Design Update

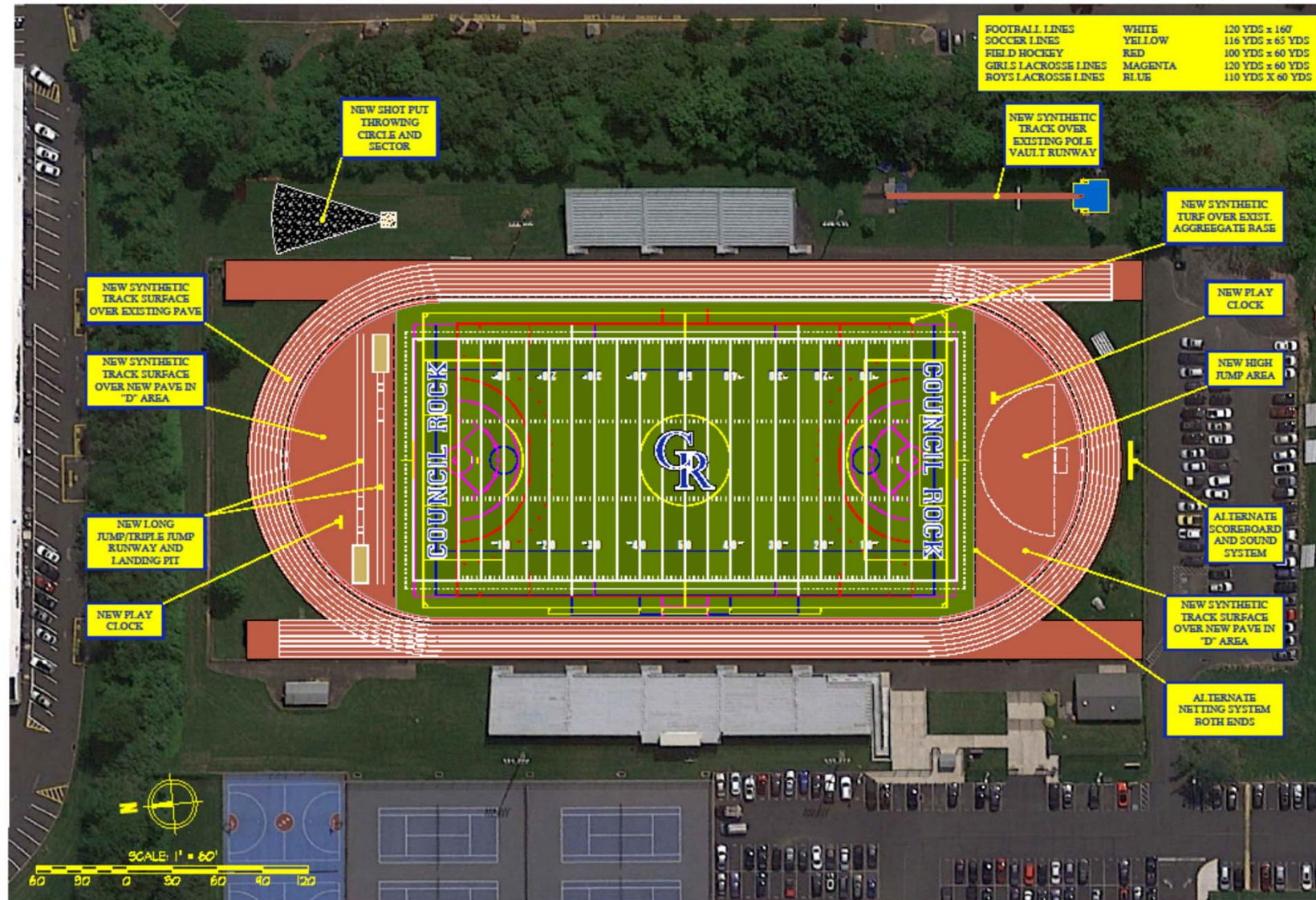


- Developed DRAFT project budget
- **Informal discussions with Northampton Township surrounding schematic planning (CRHS South):**
 - ✓ Field location
 - ✓ Proximity to toilet rooms
 - ✓ Field lighting
 - ✓ Submit Master Plan
(include stadium bleachers, field house, additional parking, etc.)
- **Informal discussions with Newtown Township surrounding schematic planning (CRHS North):**
 - ✓ Turf Replacement and 'D' Area work
 - ✓ Relocation of long/triple jump from grass to 'D' Area
 - ✓ Shot put will be relocate to the grass area
 - ✓ Discus moved from turf to grass area
 - ✓ Remove and replace all-weather track surface
 - ✓ No permits or approvals necessary for maintenance type project



Facilities Improvements Projects Update

CRHS South and North Synthetic Turf Field Projects – Schematic Design (CRHS North)



DHUY Engineering, Inc.
CONSULTING ENGINEER: Project Management / Technical Support
Structural Design / Analysis / General Contracting



One East Broad Street, Bethlehem, PA, 18018
610.439.4400 • www.dhuyengineering.com

COUNCIL ROCK SCHOOL DISTRICT
COUNCIL ROCK HIGH SCHOOL NORTH
WALT SNYDER STADIUM

SK-3

DATE: 5-30-19
REV: 6-5-19
SCALE: 1"=60'

Facilities Improvements Projects Update

CRHS South and North Synthetic Turf Field Projects – Schematic Design (CRHS South)



D'HUY Engineering, Inc.
7000 E. 11th Avenue, Suite 100
Denver, CO 80231
303.755.1111



One Penn Plaza, Suite 1000
Philadelphia, PA 19103
215.261.1000

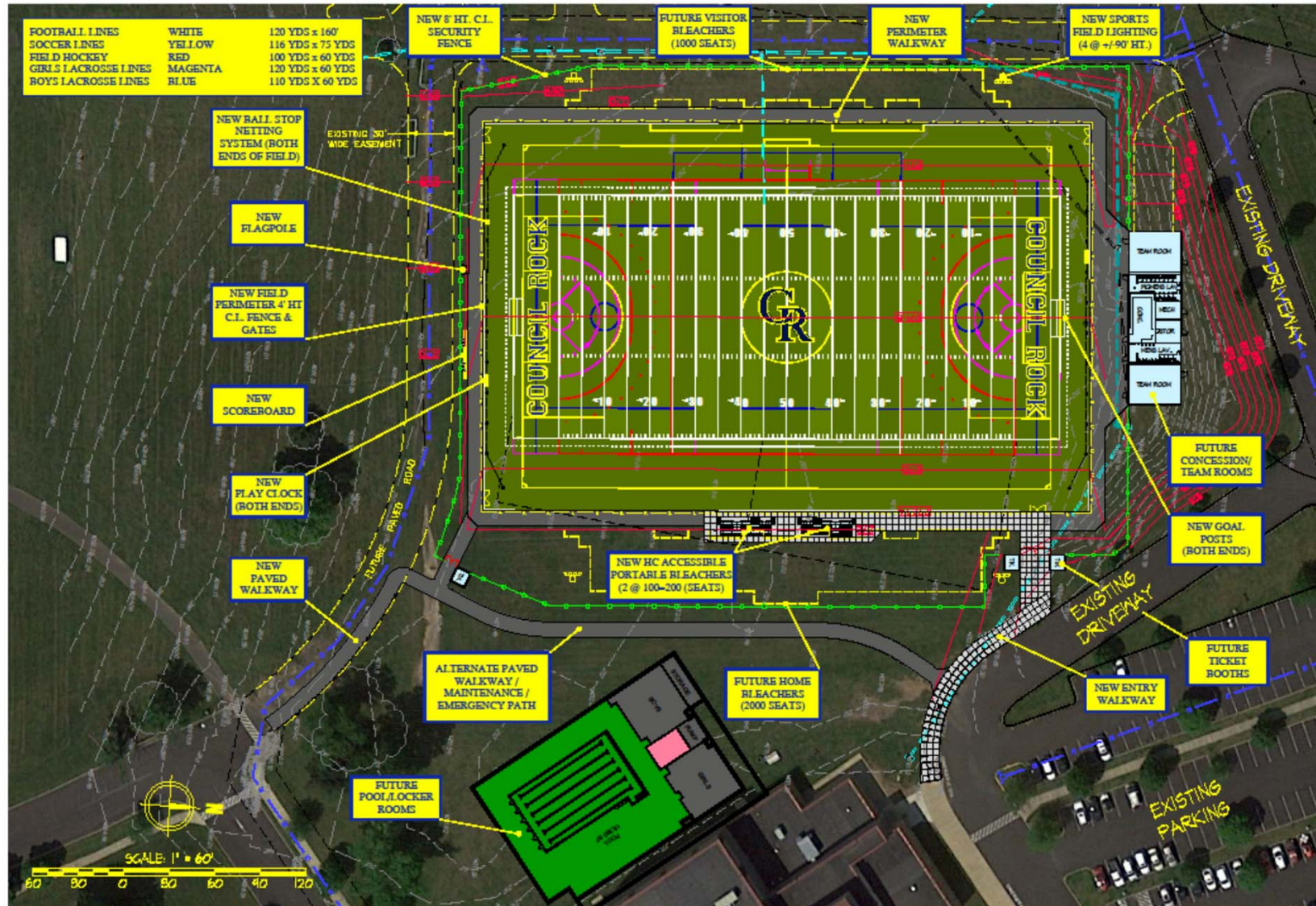
COUNCIL ROCK SCHOOL DISTRICT
COUNCIL ROCK HIGH SCHOOL SOUTH
NEW SYNTHETIC TURF FIELD

SK-1

DATE: 5-30-19
REV: 6-5-19
SCALE: 1"=100'

Facilities Improvements Projects Update

CRHS South and North Synthetic Turf Field Projects – Schematic Design (CRHS South)



DHUY Engineering, Inc.
CONSULTING ENGINEERS: Project Management / Traffic Engineering
Structural Design & Analysis / General Engineering



One East Broad Street, Bethlehem, PA 18018
610.422.1111 • www.dhuy.com

COUNCIL ROCK SCHOOL DISTRICT
COUNCIL ROCK HIGH SCHOOL SOUTH
NEW SYNTHETIC TURF FIELD

SK-2

DATE: 5-30-19
REV: 6-5-19
SCALE: 1"=60'

Facilities Improvements Projects Update

CRHS South and North Synthetic Turf Field Projects – Progress Drawing (CRHS North)



D'HUY
Engineering, Inc.
COUNCIL ROCK ENGINEERS
Civil / Mechanical / Electrical / Surveying
1000 E. Main Street, Suite 200
Bristol, PA 19003
610-381-2000
www.dhuy.com

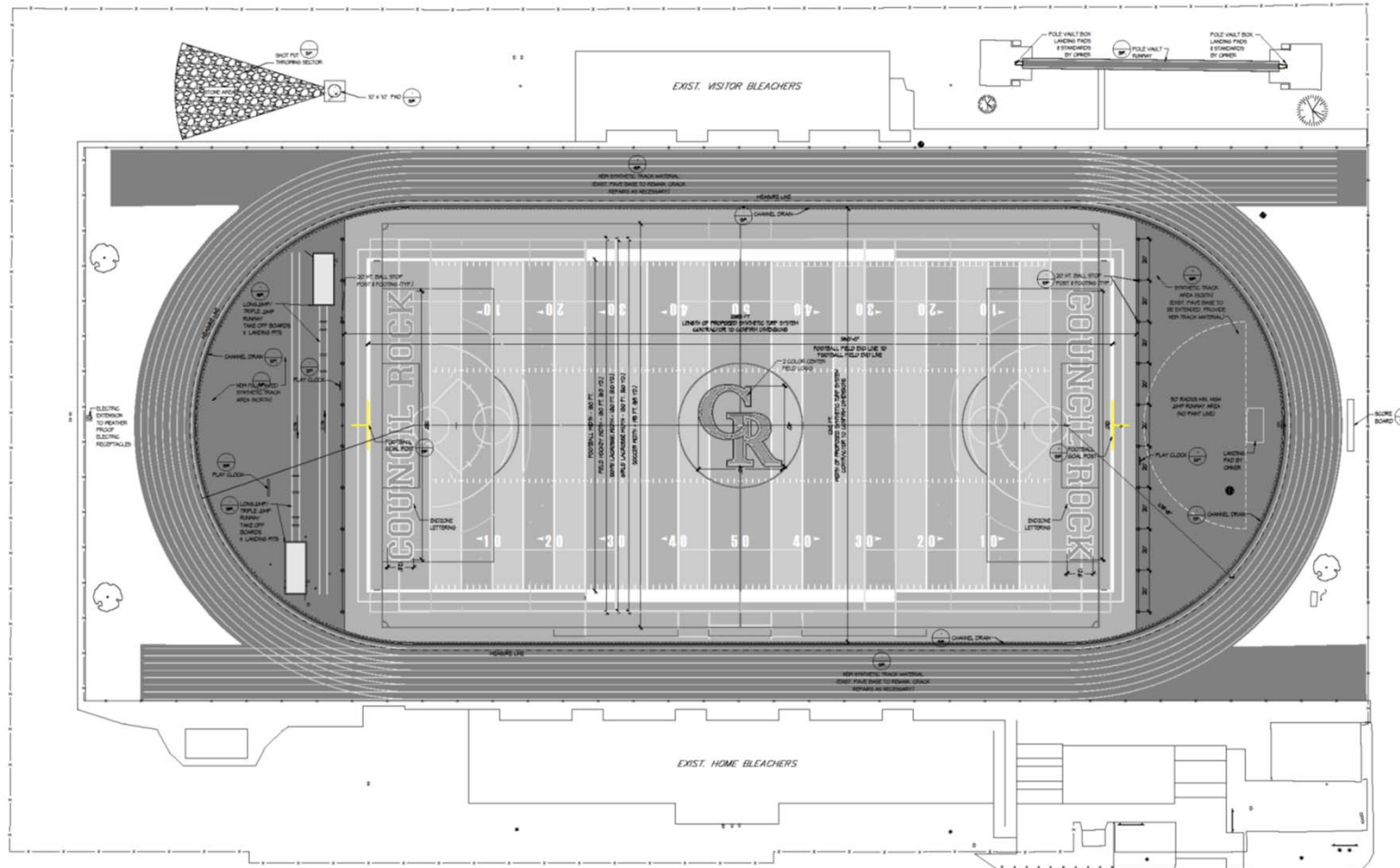
DEI
Design Engineering Inc.
One East Broad Street, Suite 310
Hartford, PA 18101
610-381-2000
www.dei.com

Terraform
Engineering, LLC
ONE EAST BROAD STREET, SUITE 300
HARTFORD, PA 18101
PHONE: 610-381-2000
www.terraformengineering.com

NO.	DATE	ISSUED FOR	BY

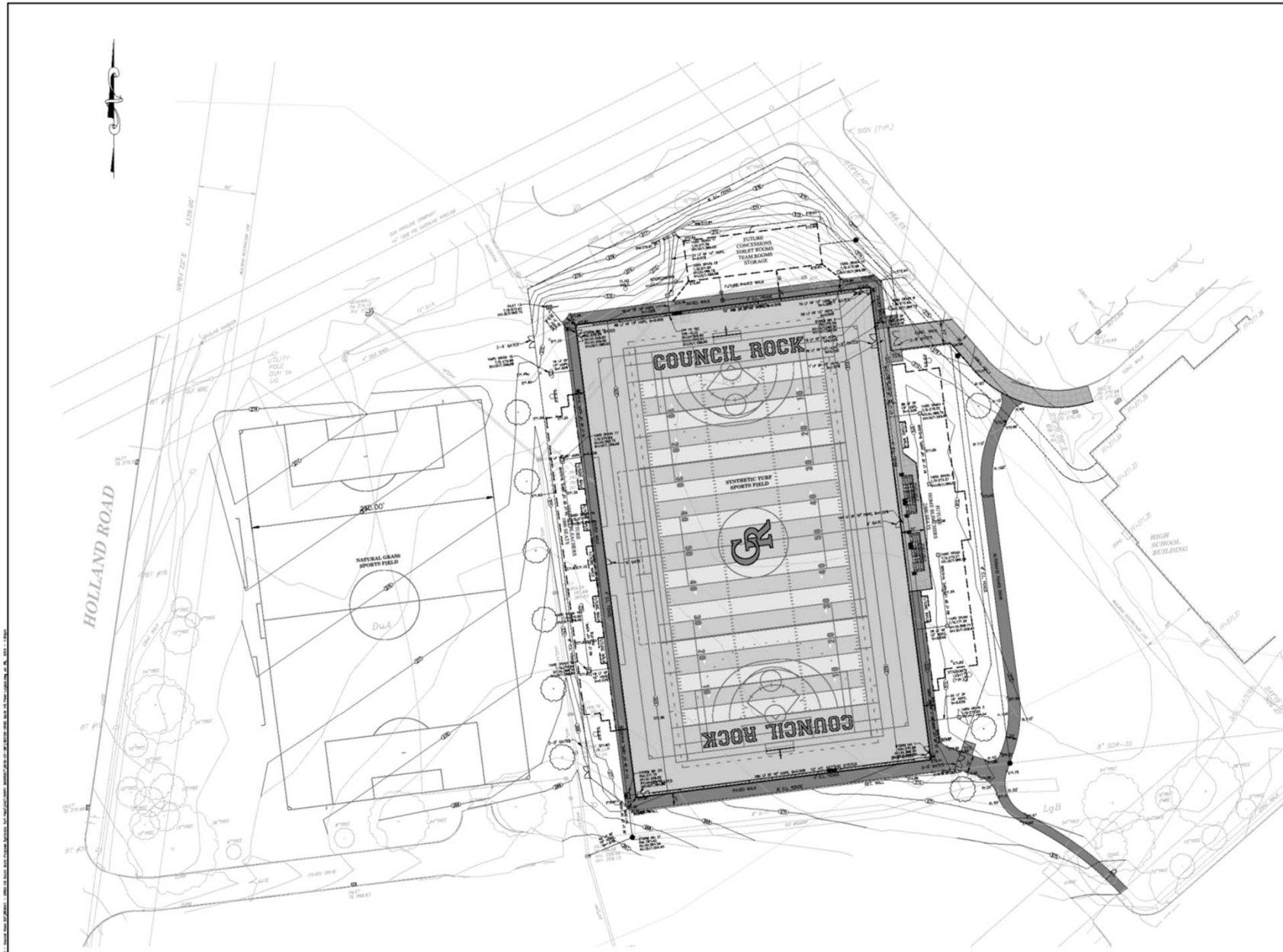
COUNCIL ROCK SCHOOL DISTRICT
COUNCIL ROCK HIGH SCHOOL NORTH
WALT SNYDER STADIUM
NEWTOWNSHIP
BUCKS COUNTY, PENNSYLVANIA

**SITE LAYOUT
PLAN**



Facilities Improvements Projects Update

CRHS South and North Synthetic Turf Field Projects – Progress Drawing (CRHS South)



D'HUY
Engineering, Inc.
CONSULTING ENGINEERS
Civil Engineering • Landscaping • Surveying
Structural Design • Traffic • Utility Engineering



One East Broad Street, Suite 310
Berks, PA 18018
610-361-0000
610-361-0001
www.dhuy.com

Terraform
Engineering, LLC
ONE EAST BROAD STREET, SUITE 300
BERKS, PA 18018
610-361-0000
www.terraform-engineering.com

NO.	DATE	ISSUED FOR	BY

COUNCIL ROCK SCHOOL DISTRICT
COUNCIL ROCK HIGH SCHOOL SOUTH
NEW SYNTHETIC TURF FIELD
NORTHAMPTON TOWNSHIP
BUCKS COUNTY, PENNSYLVANIA

**SITE LAYOUT
PLAN**

Facilities Improvements Projects Update

CRHS South and North Synthetic Turf Field Projects – Design Update



PRELIMINARY LAND DEVELOPMENT SCHEDULE – TOWNSHIP MEETINGS (Updated 16JUL19)

ACTIVITY	DATE
Sketch Review – Northampton Township Planning Commission	Not Required (1)
Sketch Review – Northampton Township Board of Supervisors	Not Required (1)
Preliminary Approval – Northampton Township Planning Commission	10SEP18
Zoning Hearing Board Meeting – Northampton Township	28OCT19
Preliminary/Final Approval – Northampton Township PC (If Required)	05NOV19
Conditional Approval – Northampton Township Board of Supervisors	18DEC19

Notes:

1. *The Township managed the sketch submission via electronic submission.*
2. *Land Development Approval is not required for CRHS North Synthetic Turf Replacement.*
3. *Meeting dates are subject to change based on Township holiday schedules and responses to respective meetings.*
4. *Meeting times are as follows:*
 - A. *Planning Commission 7:30pm*
 - B. *Zoning Hearings 7:00pm*
 - C. *Board of Supervisors 7:30pm*

Facilities Improvements Project Updates

CRHS N&S Turf, AST and SFES Projects – Master Land Development Schedule

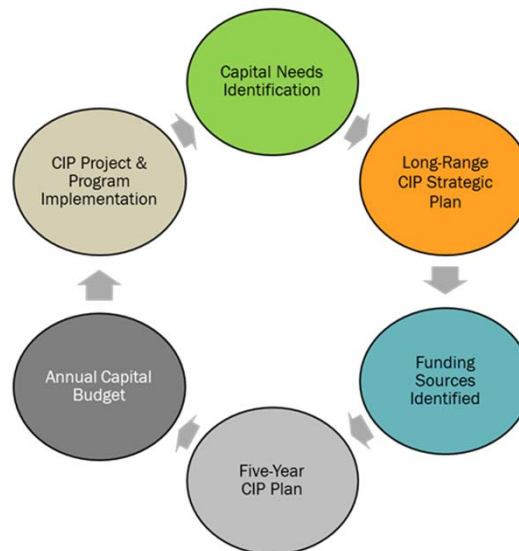
SCHRADERGROUP
BRESLIN RIDYARD FADERO ARCHITECTS
 **DEI**
DHUY Engineering, Inc.



PRELIMINARY LAND DEVELOPMENT SCHEDULE – MASTER SCHEDULE (Updated 16JUL19)

PROJECT	ACTIVITY	DATE
AST	Preliminary Approval – Northampton Township Planning Commission	10SEP19
CRHS S Turf	Preliminary Approval – Northampton Township Planning Commission	10SEP19
SFES Reno	Sketch Review – Upper Makefield Township Planning Commission	25SEP19
AST	Waiver Review – Northampton Township Board of Supervisors	25SEP19
SFES Reno	Sketch Review – Upper Makefield Township Board of Supervisors	15OCT19
AST	Zoning Hearing Board Meeting – Northampton Township	28OCT19
CRHS S Turf	Zoning Hearing Board Meeting – Northampton Township	28OCT19
AST	Preliminary/Final Approval – Northampton Township PC (If Required)	05NOV19
CRHS S Turf	Preliminary/Final Approval – Northampton Township PC (If Required)	05NOV19
SFES Reno	Preliminary Approval Upper Makefield Township Planning Commission	27NOV19
AST	Conditional Approval – Northampton Township Board of Supervisors	18DEC19
CRHS S Turf	Conditional Approval – Northampton Township Board of Supervisors	18DEC19
SFES Reno	Preliminary/Final Approval – Upper Makefield Township PC (If Req'd.)	22JAN20
SFES Reno	Zoning Hearing Board Meeting – Upper Makefield Township	28JAN20
SFES Reno	Conditional Approval – Upper Makefield Township Board of Supervisors	18FEB20

Capital Improvements Projects Update (Summer 2019)





Capital Improvements Projects Update 2018-19 CIP (Summer 2019)



Project Name	Percentage Complete				Comments
	25%	50%	75%	100%	
Limited Classroom Renovations					Waiting for Casework
Playground Repairs					15AUG19 Completion
CRHS South Gym Ductwork Painting					Complete
CRHS N&S Stage Curtain Replacement					09AUG19 Completion
CRHS N Stormwater Improvements					Complete
Chancellor Center Art Walls					
Interior Door Hardware Modifications					CES, GES, HES Complete
Chancellor Center Roof Replacement					Complete
CRHS S Chiller/Cooling Tower Replacemnt.					08AUG19 Completion
MMWES RTU Replacement					RTU delivery 08AUG19
Districtwide IP Intercom-Video Phones					Device Install Complete 07AUG19, Programming and Testing in Progress
Chancellor Center Security Improvements					Door Install early AUG19
CRHS North Natatorium Seating					

Capital Improvements Projects Update

2018/19 (Summer of 2019) – Progress Update



- **CIP Notable Items:**

- ✓ CRHS North Storm Drainage Improvements performing very well. Zero washout onto Green Lane since completion of the work. Tested by several extraordinary rain events.
- ✓ CRHS South AC back up and operating by 02AUG19
- ✓ Chancellor Center Roof Replacement performing very well. No roof leaks observed after several extraordinary rain events. Carpet replacement at upper and lower level to follow.
- ✓ Door hardware upgrades greatly improve lockdown functionality and consistent ability to lock down doors.

Capital Improvement Projects Update
Chancellor Center – Roof Replacement
Loading materials



D'HUY Engineering, Inc.



Capital Improvement Projects Update
Chancellor Center – Roof Replacement
Structural roof system plywood replacement



D'HUY Engineering, Inc.



Capital Improvement Projects Update
Chancellor Center – Roof Replacement
Finalizing flashings and terminations



D'HUY Engineering, Inc.



Capital Improvement Projects Update

CRHS North – Stormwater Improvements

Increased berm height to redirect water



D'HUY Engineering, Inc.



Capital Improvement Projects Update

CRHS North – Stormwater Improvements

New basin to collect and redirect water to existing trench drain



D'HUY Engineering, Inc.



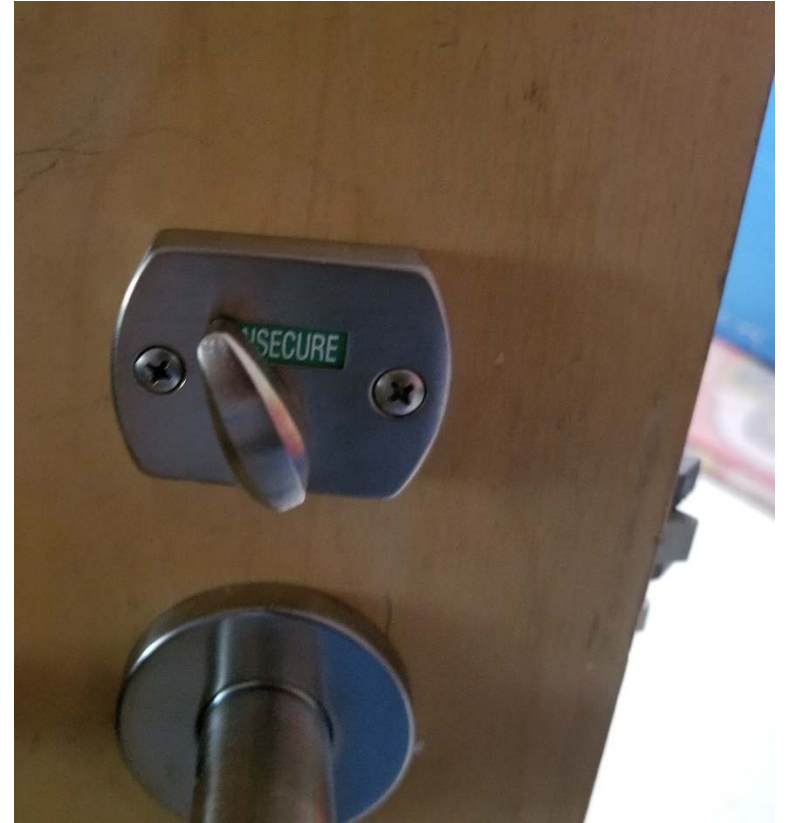
Capital Improvement Projects Update

Interior Door Hardware Modifications– Security Upgrades

Existing hardware and new intrusion hardware replacements



D'HUY Engineering, Inc.



Capital Improvement Projects Update

Playground Repairs (HCES, RES, NES and SFES)

Playground restoration at HCES



D'HUY Engineering, Inc.



Capital Improvement Projects Update

Playground Repairs (HCES, RES, NES and SFES)

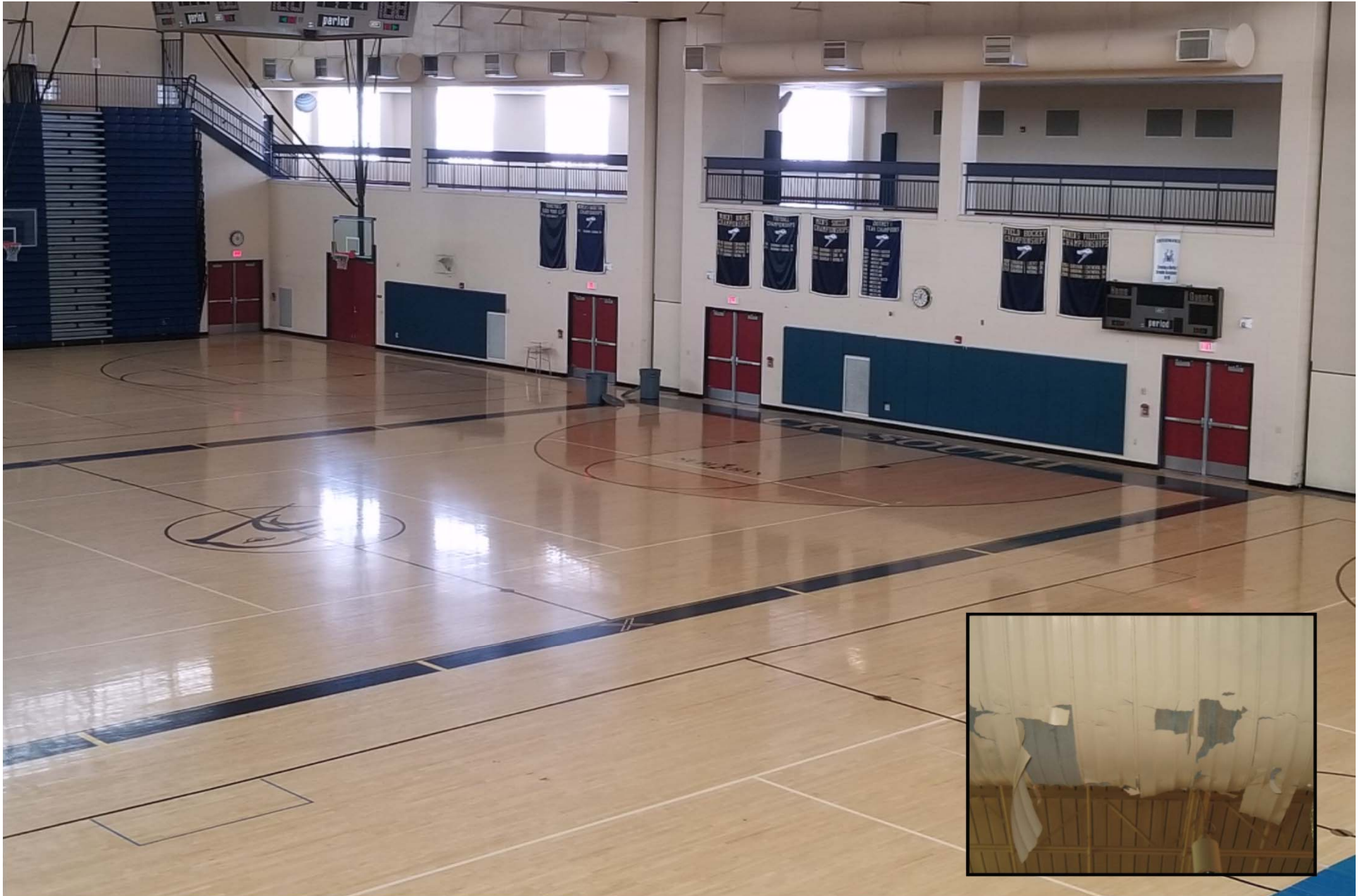
Chain link fence replacement at HCES (Adjacent to Buck Road)



D'HUY Engineering, Inc.



Capital Improvement Projects Update
CRHS South Gym Ductwork Painting
Ductwork painted and complete



Capital Improvement Projects Update

Classroom Modifications (CES and SFES)

Churchville ES operable partition (room includes separate entries, HVAC, fire protection, etc.)



D'HUY Engineering, Inc.



Capital Improvement Projects Update

Classroom Modifications (CES and SFES)

CRHS South entry vestibule and exterior video camera



D'HUY Engineering, Inc.



Capital Improvements Projects Update

2017/18 (Summer of 2018) – Chancellor Center Exterior Improvements



- **Chancellor Center Exterior Improvements – Paint Remediation:**

- ✓ The existing wood window trim, fascia's, soffits and doors were stripped, prepared, primed and painted in the summer of 2018.
- ✓ Around September/October of 2018 failure of the newly applied paint systems were observed at select areas which quickly revealed failures project wide.
- ✓ In March of 2019, the contractor engaged a testing agency to perform testing. The conclusion of the testing was defective primer material with all costs to repaint the building borne by the paint manufacturer. Additionally, mention was made relative to an elevated moisture content of the existing wood and the need to reduce the moisture prior to repainting.
- ✓ In May 2019, the district performed independent testing to confirm the physical properties including moisture content and dry film thickness of the materials.

Capital Improvements Projects Update

2017/18 (Summer of 2018) – Chancellor Center Exterior Improvements



- **Chancellor Center Exterior Improvements – Paint Remediation Next Steps:**
 - ✓ All parties are planning a meeting for August on-site to review the scope, process and any necessary testing to ensure the wood is free of stripping material, a low moisture content and other variables to be considered, as well as schedule of work. **Initially, five (5) windows will be stripped and tested to confirm moisture and work required.**
 - ✓ The majority of the work will be performed in September after the painting contractor completes other projects.
 - ✓ Following the completion of the remedial work, screens will be installed on all exterior windows.



Capital Improvements Projects Update

2017/18 (Summer of 2018) – Chancellor Center Exterior Improvements



- Chancellor Center Exterior Improvements – Representative Photos:

window trim



door trim



doors



Capital Improvements Projects Update

2017/18 (Summer of 2018) – CRHS South Tennis Court Repairs & Resurfacing



- **CRHS South Tennis/Basketball Courts –**

- Geotechnical Investigations/Conditions Update:**

- ✓ The original scope of work performed in 2018 was reduced due to concerns for extraordinary cracking on surface of court.
 - ✓ The concerns included a major crack running the length of the courts beneath the nets, spider-web cracking throughout the court surfaces and the potential for ground water or unsuitable fill causing the surface failure.
 - ✓ The scope of work included:
 - Repair of the major crack running the length of courts beneath the nets
 - Repair of all other surface cracks
 - Recoating and relining of the court surfaces
 - Minimal site work including the addition of yard drains and connection to the existing stormwater system in an attempt to intercept the groundwater that may be washing under asphalt court surface.

Capital Improvements Projects Update

2017/18 (Summer of 2018) – CRHS South Tennis Court Repairs & Resurfacing



- **CRHS South Tennis/Basketball Courts –
Geotechnical Investigations/Conditions Update:**
 - ✓ The mill and overlay of the courts was eliminated to allow the design team to evaluate the courts and the performance of the repairs upon the completion of the work. The plan included adding the mill and overlay of the courts as a future CIP should the work perform as hoped.
 - ✓ We engaged a geotechnical engineer to perform subsurface testing during construction and D'Huy engineering provided a post project report based on the findings.

PowerPoint Presentation from 01FEB18 FACCOM Meeting

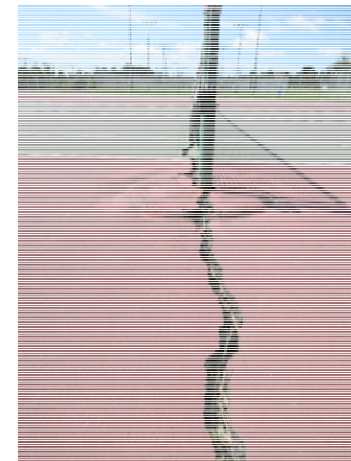
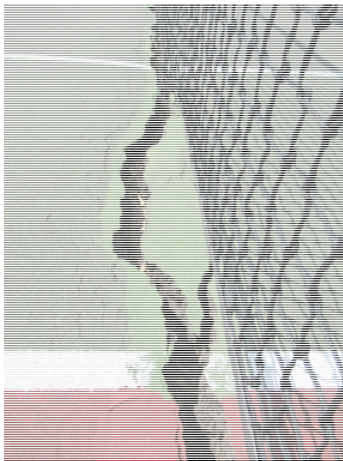


Capital Improvements Projects

CRHS South Tennis/Basketball Court Repairs

Project calls for crack repairs, tennis net standards replacement, mill and overlay, all-weather surface and restriping.

Site investigations and review of the existing civil engineering drawings have raised suspicions of causes of excessively large and extent of cracks. Representative Photos:



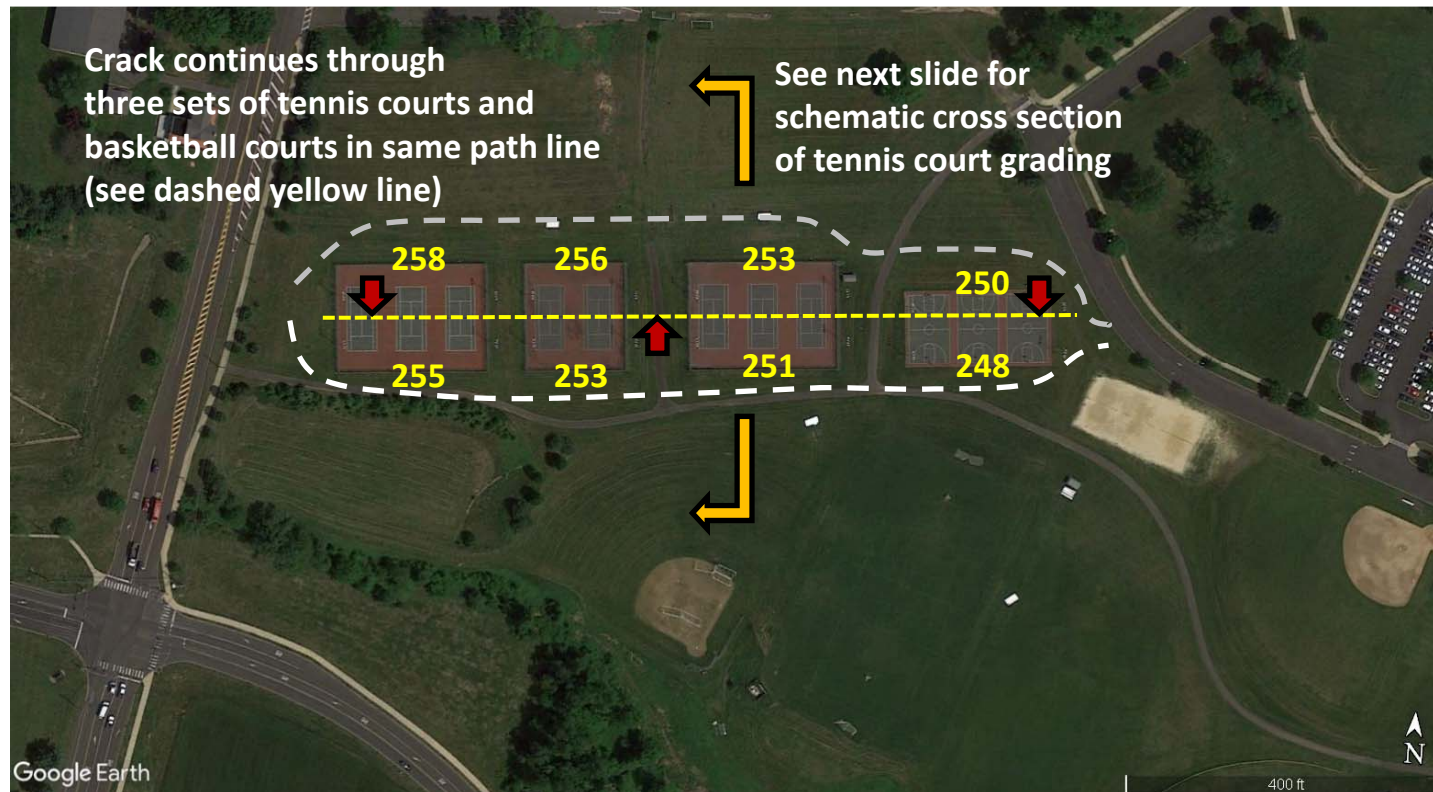
Capital Improvements Projects
CRHS South Tennis/Basketball Court Repairs



Capital Improvements Projects
CRHS South Tennis/Basketball Court Repairs



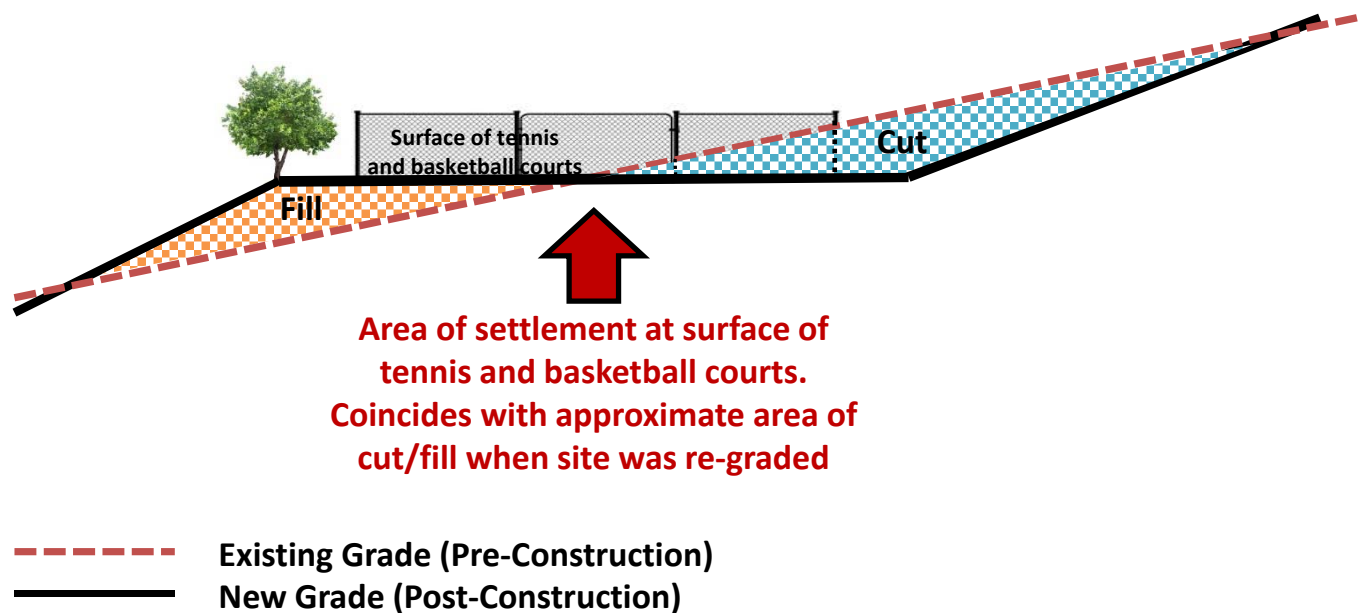
Diagrammatic Grading Plan & Rough Spot Elevations





Capital Improvements Projects
CRHS South Tennis/Basketball Court Repairs

Diagrammatic Cross Section at Tennis Court Grading





Capital Improvements Projects

CRHS South Tennis/Basketball Court Repairs

Action Plan:

- 1. Engage geotechnical engineer to perform probes at select areas to gather subgrade information.**
- 2. Due to the courts placement on a downslope, excessive ground water is infiltrating the stone base beneath the courts. This could be a contributing factor. Drainage will be added in an attempt to intercept the water.**
- 3. The scope of work will be reduced to avoid wasteful spending. Scope will include surface crack repairs, full depth repair of primary crack running through courts and newly painted surface and lines. Excluded from scvope while we observe the conditions will be the full depth repair of all cracks and the complete mill and overlay of the courts.**



Capital Improvements Projects

CRHS South Tennis/Basketball Court Repairs

Action Plan:

4. After observations and feedback from the geotechnical report, future improvements will be considered. Pending the planned efforts successfully address the issue, the mill and overly process will be planned as a future CIP Project.
5. The results of the geotechnical study and ongoing observations of the crack repairs will dictate scope of the future work.

Capital Improvements Projects Update

2017/18 (Summer of 2018) – CRHS South Tennis Court Repairs & Resurfacing



- **CRHS South Tennis/Basketball Courts –**

- Geotechnical Investigations/Conditions Update:**

- ✓ On 14FEB19 the cracks resurfaced along with movement of the court surface. The cracks were observe in areas of repairs along with a few new locations. In early February 2019 we had experienced several rain days followed by the first freeze thaw condition of the season.
 - ✓ **Based on the ongoing movement of the surface and geotechnical analysis and recommendations, it is recommended that the district continue to perform crack repairs and begin to budget for full court replacement and drainage system installation in the near future. A general summary of the geotechnical report include, but is not limited to:**
 - Soil profile includes 2.25 to 5.5 feet thick layer of existing fill consisting of orange brown and brown fine sand and silt with occasional rock fragments and some zones of gray slightly organic silt. **The conditions encountered do not suggest that the noted cracking is related to soft compressible soils and related settlement beneath the court surface.**

Capital Improvements Projects Update

2017/18 (Summer of 2018) – CRHS South Tennis Court Repairs & Resurfacing



- **CRHS South Tennis/Basketball Courts – Geotechnical Investigations/Conditions Update:**
 - However, it was noted that the existing tennis courts subbase stone thickness was minimal with as little as 3” of subbase stone encountered at the easternmost set of courts.
 - This condition combined with the underlying fill soils which consist primarily of fine sands and silts with a high susceptibility for frost heave suggests that the court cracking may be related to frost heave.
- **Recommendation:**
 - ✓ **In order to limit the potential for this condition occurring and to extend the court surface longevity, it is recommended to increase the subbase stone thickness and to provide supplemental drainage within the stone layer in order to avoid long-term collection of water beneath the court surface. Estimated Project Budget: \$1.2 – 1.5M (To be included in 2018/2019 CIP Update)**

Capital Improvements Projects Update

2017/18 (Summer of 2018) – CRHS North Sport Court Repairs



- **CRHS North Sport Court Repairs Update:**

- ✓ The newly installed court surface became problematic shortly after the completion of the work in summer of 2018 (entire surface displaced on minimally sloped asphalt surface).
- ✓ Sport Court representatives returned to make the necessary repairs without issue (15 Year Warranty)
- ✓ In the spring of 2019, the newly installed court again experienced issues including, but not limited to:
 - Court movement
 - Court detachment
 - Court buckling
 - Traction on painted lines and logo
- ✓ Sport Court representatives returned to address all identified issues, including, but not limited to the following:
 - New anchoring plan base on minimal pitch of asphalt surface
 - Installation of a geotextile underlayment between asphalt and tile surface
 - Repair painted surfaces and addition of abrasive additive for traction

Capital Improvements Projects Update

2017/18 (Summer of 2018) – CRHS North Sport Court Repairs



CRHS North

Natatorium Spectator Seating Improvements



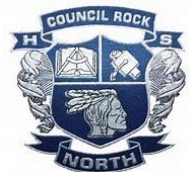
Capital Improvements Projects Update

CRHS North Natatorium Spectator Seating Improvements – Progress Update

SCHRADERGROUP



- Preconstruction Meeting 10JUL19
- Project Site made available 25JUL19
 - ✓ Temporary partition construction in progress
 - ✓ Demolition activities including bench removal
- Temporary measures critical prior to commencement of demolition
- Work scheduled to complete by mid-September 2019
- Administrative Procedures:
 - Bi-Weekly Job Conferences starting August 2019
 - Building Permit issued by Newtown Township
 - Submittal Process and procuring materials



Capital Improvements Projects Update

CRHS North Natatorium Spectator Seating Improvements – Progress Photos

SCHRADERGROUP



Miscellaneous Update

Miscellaneous Items

Borough of Newtown Capital Projects – Chancellor Street Improvements



Progress Update:

1. Current scope of work estimated at \$1,820 by Borough, actual bids being solicited by Borough.
2. Waiting for bid results from Borough of Newtown.
3. Waiting for schedule from Borough of Newtown.

Miscellaneous Items

CRSD Facilities Use Fees – Proposed Modifications (General Comments)



- **Facilities Use Fees last updated in September of 2014 (Admin. Reg. 707)**
- **Benchmarking recently performed on fees of neighboring districts**
 - ✓ Centennial, Central Bucks, Pennsbury, New Hope-Solebury, Pennridge
- **Benchmarking revealed considerations to increase fees**
- **Other considerations include, but are not limited to:**
 - ✓ Increased costs to maintain interior spaces (preventative maintenance)
 - Sound boards, gym floors, auditoriums, etc.
 - Increased costs to extend hours of district staff
 - ✓ Increased costs to maintain exterior fields
 - Need to aerate and over-seed exterior fields use
 - Increased cost to extend hours of district staff
 - ✓ Tournament play fees disproportionate in comparison to use fees
 - ✓ Increased utility charges for site lighting, field lighting and AC
 - ✓ Increased costs to extend Aramark custodial team

Miscellaneous Items

CRSD Facilities Use Fees – Proposed Modifications



FACILITIES USE SUMMARY OF FEES

School Level	Existing Fee Structure		Proposed Fee Structure (2019-20)	
	Per 4 Hours	Per 4 Hours	Per 4 Hours	Per 4 Hours
Field Type	Non-Profit	For Profit	Non-Profit	For Profit
HIGH SCHOOLS				
Athletic Field	\$10	\$20	\$40	\$75
Auditorium	\$100	\$300 (first hour)	\$100	\$300 (first hour)
Auditorium (additional hours same day)	\$0	\$150	\$25/hour	\$150/hour
Gymnasium	\$50	\$500	\$75	\$700
Auxiliary Gymnasium	\$20	\$200	\$35	\$200
Band Rooms/FCS	\$10	\$40	\$20	\$40
Cafeteria	\$25	\$125	\$50	\$150
Classroom	\$10	\$25	\$15	\$50
Lecture Room (LGI)	\$25	\$125	\$40	\$150
Library	\$25	\$50	\$30	\$100

Miscellaneous Items

CRSD Facilities Use Fees – Proposed Modifications



FACILITIES USE SUMMARY OF FEES

School Level	Existing Fee Structure		Proposed Fee Structure (2019-20)	
	Per 4 Hours	Per 4 Hours	Per 4 Hours	Per 4 Hours
Field Type	Non-Profit	For Profit	Non-Profit	For Profit
HIGH SCHOOLS (continued)				
All-Weather Track	\$25	\$100	\$25	\$100
Exterior Courts (T, VB, BB)	\$10	\$50	\$30	\$50
Exterior Court Lighting	undefined	undefined	\$25/hour	\$25/hour
Parking Lot	\$20	\$50	\$25	\$300
CRHS North Natatorium	\$150/hour	unavailable	\$150/hour	unavailable
Walt Snyder Stadium (Synthetic Turf Field)	\$160/hour	\$250/hour	\$160/hour	\$250/hour
Stadium Lighting	undefined	undefined	\$75	\$150
Tournaments – Gymnasium (Per 8 HR day)	\$100/day	\$200/day	\$200/day (+\$125/HR > 8)	\$1,000/day (+\$125/HR > 8)
Tournaments – Field (Per 8 HR day)	\$100	\$200	\$125 (+\$25/HR > 8)	\$300 (+\$25/HR > 8)
Wrestling Rooms	\$10	\$100	\$35	\$200

Miscellaneous Items

CRSD Facilities Use Fees – Proposed Modifications



FACILITIES USE SUMMARY OF FEES

School Level	Existing Fee Structure		Proposed Fee Structure (2019-20)	
	Per 4 Hours	Per 4 Hours	Per 4 Hours	Per 4 Hours
Field Type	Non-Profit	For Profit	Non-Profit	For Profit
MIDDLE SCHOOLS				
<i>Same as High Schools with the following exceptions:</i>				
Gymnasium	\$20	\$200	\$40	\$400
Tournaments – Gym (Per 8 HR day)	\$100	\$200	\$200 (+\$25/HR > 8)	\$600 (+\$75/HR > 8)

Miscellaneous Items

CRSD Facilities Use Fees – Proposed Modifications



FACILITIES USE SUMMARY OF FEES

School Level	Existing Fee Structure		Proposed Fee Structure (2019-20)	
	Per 4 Hours	Per 4 Hours	Per 4 Hours	Per 4 Hours
Field Type	Non-Profit	For Profit	Non-Profit	For Profit
ELEMENTARY SCHOOLS				
<i>Same as Middle Schools with the following exceptions:</i>				
Multi-Purpose Room	\$25	\$125	\$35	\$150
Gymnasium	\$20	\$200	\$25	\$250
Library	\$25	\$50	\$25	\$75
Parking Lot	\$20	\$50	\$25	\$150
Field	\$10	\$20	\$25	\$75

Miscellaneous Items

CRSD Facilities Use Fees – Proposed Modifications

Other Facilities Related Fees Proposed for Modifications



OTHER FACILITIES RELATED SUMMARY OF FEES

Program/Staff	Current Fee (per hour)	Proposed Fee (2019-20) (per hour)	Comments
Summer Camp Participants	\$15/camper	\$25/camper	<ul style="list-style-type: none"> ✓ Consider percentage based fee ILO per camper fee? ✓ Currently charge \$100 field lining fee
Custodial Fees	\$25	\$30	✓ Confirmed with Aramark
CR Maintenance Team	\$60/\$80	\$70/\$95	✓ Fees = 1.5/2.0 time
CR Security	\$50	\$55/\$75	✓ Fees = 1.5/2.0 time
Cafeteria Manager	\$50	\$50	✓ Confirmed w/ Chartwells
Cafeteria Worker	\$25	\$25	✓ Confirmed w/ Chartwells
Audio-Visual Support	\$55	\$75	
Auditorium Manager	\$30	\$50	
Stage Crew	\$11	\$20	

Miscellaneous Items

CRSD Facilities Use Fees – Proposed Modifications

Other Facilities Related Fees Proposed for Modifications



OTHER FACILITIES RELATED SUMMARY OF FEES

Item Description	Comments
Percentage fee (15%) ILO per camper fee considerations	<ul style="list-style-type: none">✓ Significant increase to most groups, but relative to scope of camp and total fees collected✓ Proposed 'per camper' fee increase from \$15 to \$25✓ Proposed fee percentage ILO per camper is 15%✓ 15% fee percentage would put camper fees in the following fee range (\$24 to \$45), with an average of \$31.74 per camper✓ 15% fee would be applied to camps ranging in total income of (\$900 to \$45,000), with an average of \$1,499.84 total income per coach✓ Suggest percentage fee ILO of per camper fee structure
Revise Administrative Regulation AR 707 to add the following to page 2, item 4	<p>The availability of Facilities shall, at all times, be subject to the needs, requirements, and activities of the schools and school district. Users may not schedule any event that includes animal rides, mechanical rides, petting zoos, hot air balloons, bounce houses, fire works, bon fires, or any other event that may create a danger or risk because of the inherent nature of the activity without the permission of the Superintendent or his/her designee and proof of appropriate insurance that covers this particular event. Individual schools may ban other materials like latex or peanut butter.</p>

Miscellaneous Items

CRSD Facilities Use Fees – Proposed Modifications

Other Facilities Related Fees Proposed for Modifications



OTHER FACILITIES RELATED SUMMARY OF FEES

Item Description	Comments
Revise 'Application for Temporary Use of School Facilities'	<ul style="list-style-type: none">✓ Add total number of participants, including # of adults and # of students/children✓ Revise total number of attendees to read total number of spectators✓ Revise how much to read amount per person✓ Revise hold harmless language in coordination with district solicitor

Board Agenda Items

(August 22, 2019)



Board Agenda Items (BA= Board CA= Consent)

SFES Additions and Renovations – PlanCon Part A and B



Sol Feinstone ES Additions and Renovations PlanCon Part A (Project Justification) and PlanCon Part B (Schematic Design)

- Current moratorium on PDE PlanCon Process
- Submitting forms to be proactive
- Unlikely event submissions will be considered later

Cost: N/A

Funding: N/A

CA

Board Agenda Items (BA= Board CA= Consent)

Districtwide Security Upgrades – Miscellaneous Security Items



Districtwide Security Upgrades

Projects include: CES Int./Ext. Cameras, NMS Remote Release Controls, CRHS South Int./Ext. Cameras, Re-IP Address Access Controls and Additional Video Phone Units

- As described under Security Update
- Access Security is District security vendor
- Costars purchase

Cost: \$90,460

Funding: 26 Maintenance Security Budget

Cost: \$8,300

Funding: 22 Capital Reserves Budget (phones)

CA

Upcoming Meetings & Topics:

Meetings and Topics include, but may not be limited to:

MEETING DATE	PROBABLE TOPIC
05SEP19	Facilities Improvements Update <ul style="list-style-type: none">✓ RHES Additions and Renovations Construction Update✓ SFES Additions and Renovations Design/Approvals Update✓ <i>New ACHIEVE-Sloan-Twilight Facility Design/Approvals Update</i> <i>- Schematic Design Review (Breslin Ridyard Fadero Architects)</i>✓ CRHS South Synthetic Turf Project Design/Approvals Update✓ CRHS North Synthetic Turf/Track Design/Approvals Update
05SEP19	Summer 2019 Capital Improvements Projects Budget Update
10OCT19	Distribution of 2019-20 CIP including 5-Year Plan Update
07NOV19	Joint FINCOM/FACCOM Mtg. – Finalize CIP Projects/Budget

Note: Dates and Topics are Subject to Change and/or Expand



Public Comments - Thank you!

Next Meeting: Thursday, September 5, 2019 @ 7:00pm

