

# Facility and Long Range Planning Monthly Report December 12, 2022



# Construction Update:

- Carter Elementary School #21
- Daniel Elementary School #22
- Hatfield Replacement ES
- Seven Hills Replacement ES
- Northwest HS – Renovations & Additions
- Pike Replacement MS
- Medlin Middle School – Tennis Courts
- Playground Upgrades – various ES campuses
- Pre-K Additions – various ES campuses
- C.W. Worthington Middle School #7

# Carter Elementary School #21



# Daniel Elementary School #22



# Hatfield Replacement ES



# Seven Hills Replacement ES



# Northwest HS – Renovations & Additions



# Pike Middle School Replacement





# Medlin Middle School – Tennis Courts



# Playground Upgrades

Beck ES



Love ES



Curtis ES

# Pre-K Additions

## Hughes ES



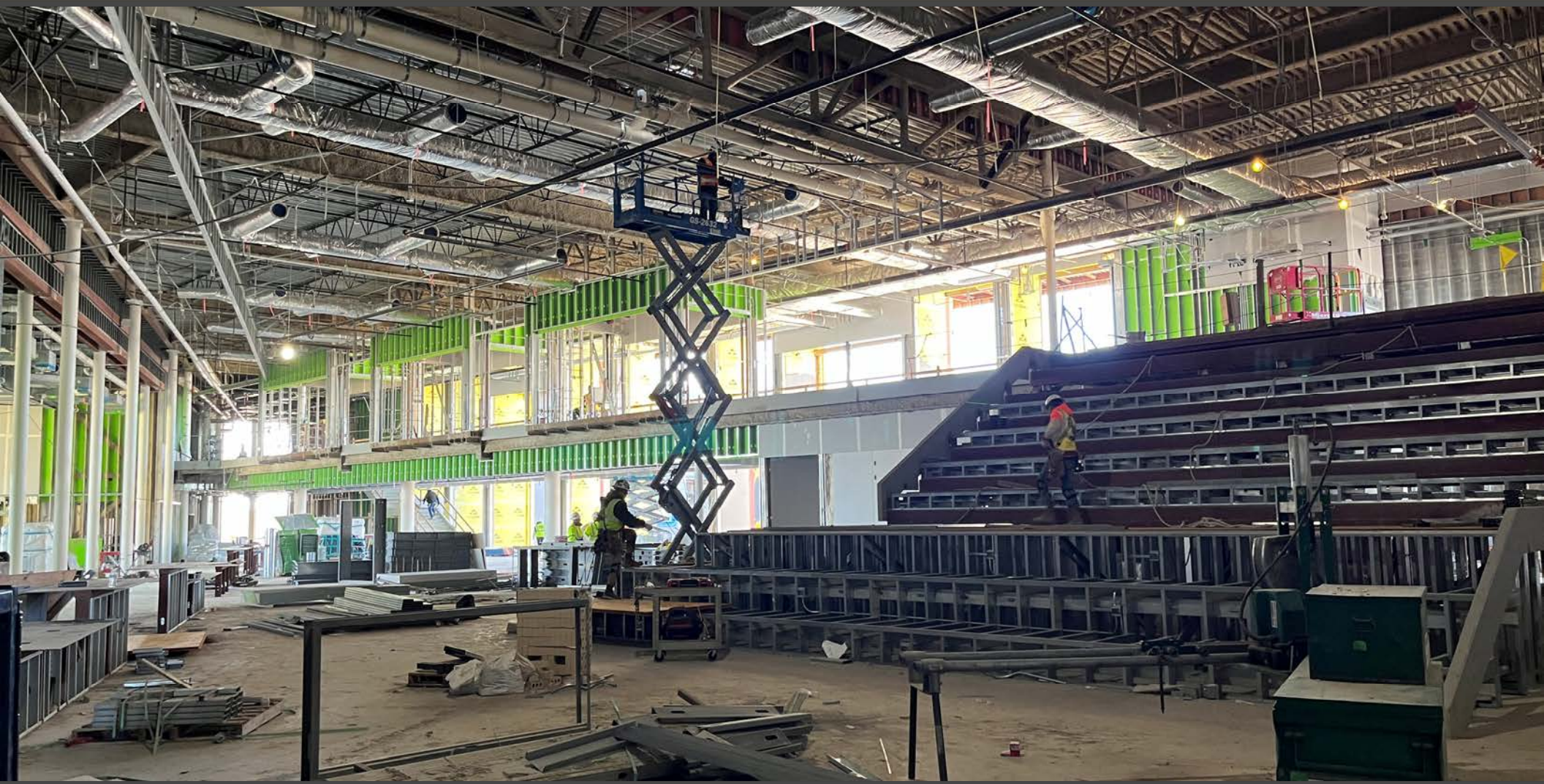
# C.W. Worthington - Middle School #7

















[www.nisdtxconstruction.org](http://www.nisdtxconstruction.org)

[www.nisdtx.org](http://www.nisdtx.org)