

LEA Name : Spring Grove Area SD
Address : 100 E College Ave
Spring Grove , PA 17362

County : York
AUN Number : 112676703
LEA Type : SD

Annual Financial Report
Accuracy Certification Statement

For Fiscal Year Ending

6/30/2022

Pennsylvania Department of Education


&

Office of Comptroller Operations

PDE-2056: Intermediate Unit

PDE-2057: School District, AVTS/CTC, Charter School,
and Special Program Jointure

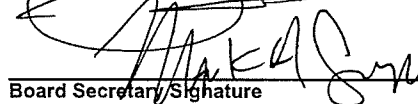
CERTIFICATION: By signing this page I agree that the electronic data submitted is a complete and accurate statement of the financial operations and status of the local education agency for the fiscal year. It has been prepared in accordance with generally accepted accounting principles and established Commonwealth of PA reporting guidelines.



Chief School Administrator Signature

11/22/2022

Date



Board Secretary Signature

11/22/2022

Date

Mark Czapp

Contact Person

czappm@sgasd.org

Contact Person E-mail Address

(717)225-4731

Ext :3014

Contact Person Telephone Number

Contact Person Fax Number

Audit Certification
Annual Financial Report:
For Fiscal Year Ending 6/30/2022
(Pursuant to PA School Code Section 218(b))

LEA Name : Spring Grove Area SD
AUN Number : 112676703
County : York

Audit Certification Due: 12/31/2022

This certification is applicable to the Annual Financial Report data submitted through the Consolidated Financial Reporting System (CFRS).

CERTIFICATION: By signing this page I agree that the financial statements of the school have been properly audited as noted above pursuant to Article XIV, and in the auditor's professional opinion, the Annual Financial Report (PDE-2057) submitted through CFRS is materially consistent with the audited financial statements.

Chief School Administrator

Signature

Date

11/22/2022

Board Secretary

Signature

Date

11/22/2022

Mark Czapp

Contact Person

czappm@sgasd.org

Contact Person E-mail Address

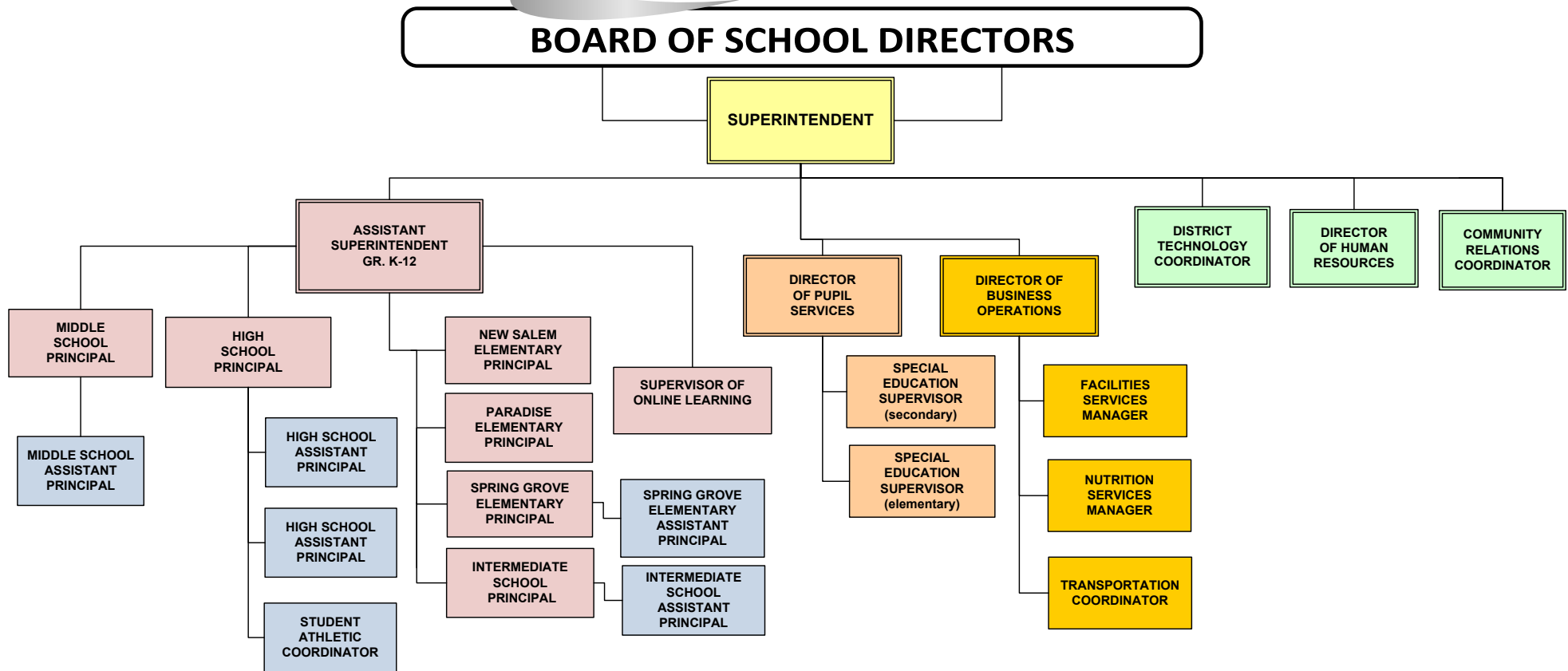
(717)225-4731

Ext :3014

Contact Person Telephone Number

Contact Person Fax Number

Spring Grove Area School District
2021-2022 Administrative Organizational Chart





Book	Policy Manual
Section	600 Finances
Title	GASB Statement 34
Code	622
Status	Active
Adopted	November 14, 2001
Last Reviewed	August 7, 2008

Purpose

The Board recognizes the need to implement the required accounting and financial reporting standards stipulated by the Pennsylvania Department of Education.[\[1\]](#)

The primary objectives of implementing the GASB Statement 34 are to assure compliance with state requirement and to properly account for both the financial and economic resources of the school district

Authority

Participation of the school district in any such activity shall be in accordance with Board policy.

Delegation of Responsibility

The responsibility to coordinate the compilation and preparation of all information necessary to implement this policy is delegated to the Director of Business Operations.

The designated individual shall be responsible for implementing the necessary procedures to establish and maintain fixed asset records, including depreciation schedules. Depreciation shall be computed on a straight-line basis over the useful lives of the assets, using an averaging convention. Normal maintenance and repairs shall be charged to expense as incurred; major renewals and betterments that materially extend the life or increase the value of the asset shall be capitalized. A schedule of accumulated depreciation shall be consistent from year to year. The basis for depreciation, including groups of assets and useful lives, shall be in writing and annually submitted for review to the independent auditors.

The Superintendent shall prepare the required Management Discussion and Analysis (MD&A).

The MD&A shall be in the form required by GASB Statement 34 and shall be submitted to the Board for approval, prior to publication.

Prior to submission of the MD&A for Board approval, the independent auditors shall review the MD&A, in accordance with SAS No. 52, "Required Supplementary Information."

Guidelines

In order to associate debt with acquired assets, and to avoid net asset deficits, any asset that has been acquired with debt proceeds shall be capitalized, regardless of the cost of the asset. The asset life of these assets shall be considered relative to the time of the respective debt amortizations.

For all other assets not acquired by debt proceeds, the dollar value of any single item for inclusion in the fixed assets accounts shall be not less than \$5,000.00

The capitalization threshold shall be set at a level that will capture at least 80% of all fixed assets. A fixed asset, outlined in this policy, must have a useful life in excess of one year.

Assets that fall below the capitalization threshold for GASB 34 reporting purposes may still be significant for insurance, warranty service, and obsolescence/replacement policy tracking purposes. The school district may record and maintain these non-GASB 34 asset inventories in subsidiary ledgers.

Legal

1. 24 P.S. 613

<u>Val Number</u>	<u>Description</u>	<u>Justification</u>
30160	<p>Federal IDEA revenue has been reported in revenue code 8512 or 8513 rather than in code 6832 as pass thru funds. Please make corrections or provide an explanation. Receipt of IDEA funded COVID 19 SECIM grants correctly recorded to 8512 can be noted in the justification.</p> <p>REV8512: \$15,524.16 REV8513: \$0.00</p>	<p>Receipt of IDEA funded Covid 19 SECIM grants correctly recorded to 8512 (also to PDE Audit Confirmation).</p>
42420	<p>Expenditure Detail: Total current year 2700-513 expenditure varies from prior year by 10%. Correct the data or enter a justification.</p> <p>2700-513, AFR Exp Detail: \$4,625,457.12 2700-513, PY AFR Amount: \$2,546,221.81</p>	<p>This increase was due to a new transportation contractor and a significant increase in the daily rate. The district also added additional buses and took back the majority of vans that were contracted with our local IU.</p>

Amounts Expressed in Whole Dollars		<u>General Fund</u> <u>(10)</u>	<u>Student Sponsored</u> <u>Activity Fund</u> <u>(21)</u>	<u>Public Purpose Trust</u> <u>(27)</u>	<u>Other Compt Approved</u> <u>(28)</u>	<u>Athletic / Activity</u> <u>(29)</u>
Assets And Deferred Outflows Of Resources						
Assets						
0100	Cash and Cash Equivalents	6,175,205				
0110	Investments	9,040,742				
0120	Taxes Receivable	749,597				
0130	Due From Other Funds	18,923				
0141	Due From Other Governments	5,132,652				
0142	State Revenue Receivable					
0143	Federal Revenue Receivable					
0145	Other Intergovernmental Revenue Receivable					
0146	Due from Primary Government					
0147	Due from Component Unit					
0150	Other Receivables	188,407				
0170	Inventories					
0180	Prepaid Expenses (Expenditures)	625				
0190	Other Current Assets					
Total Assets		\$21,306,151				
0910	Deferred Outflows of Resources					
Total Assets And Deferred Outflows Of Resources		\$21,306,151				

LEA : 112676703 Spring Grove Area SD

Printed 11/22/2022 10:48:19 AM

Amounts Expressed in Whole Dollars		<u>Capital Reserve (690.</u> <u>1850)</u> <u>(31)</u>	<u>Capital Reserve (1431)</u> <u>(32)</u>	<u>Other Capital Projects</u> <u>Fund</u> <u>(39)</u>	<u>Debt Service</u> <u>(40)</u>	<u>Permanent</u> <u>(90)</u>
Assets And Deferred Outflows Of Resources						
Assets						
0100	Cash and Cash Equivalents		775,886			
0110	Investments		552,734			
0120	Taxes Receivable					
0130	Due From Other Funds		999,806			
0141	Due From Other Governments					
0142	State Revenue Receivable					
0143	Federal Revenue Receivable					
0145	Other Intergovernmental Revenue Receivable					
0146	Due from Primary Government					
0147	Due from Component Unit					
0150	Other Receivables					
0170	Inventories					
0180	Prepaid Expenses (Expenditures)					
0190	Other Current Assets					
Total Assets			\$2,328,426			
0910	Deferred Outflows of Resources					
Total Assets And Deferred Outflows Of Resources			\$2,328,426			

LEA : 112676703 Spring Grove Area SD

Printed 11/22/2022 10:48:19 AM

Amounts Expressed in Whole Dollars		<u>Total Governmental Funds</u>
Assets And Deferred Outflows Of Resources		
Assets		
0100 Cash and Cash Equivalents	6,951,091	
0110 Investments	9,593,476	
0120 Taxes Receivable	749,597	
0130 Due From Other Funds	1,018,729	
0141 Due From Other Governments	5,132,652	
0142 State Revenue Receivable		
0143 Federal Revenue Receivable		
0145 Other Intergovernmental Revenue Receivable		
0146 Due from Primary Government		
0147 Due from Component Unit		
0150 Other Receivables	188,407	
0170 Inventories		
0180 Prepaid Expenses (Expenditures)	625	
0190 Other Current Assets		
Total Assets	\$23,634,577	
0910 Deferred Outflows of Resources		
Total Assets And Deferred Outflows Of Resources	\$23,634,577	

LEA : 112676703 Spring Grove Area SD

Printed 11/22/2022 10:48:19 AM

Amounts Expressed in Whole Dollars	<u>General Fund</u> <u>(10)</u>	<u>Student Sponsored</u> <u>Activity Fund</u> <u>(21)</u>	<u>Public Purpose Trust</u> <u>(27)</u>	<u>Other Compt Approved</u> <u>(28)</u>	<u>Athletic / Activity</u> <u>(29)</u>
Liabilities And Deferred Inflows Of Resources And Fund Balances					
Liabilities					
0400 Due to Other Funds	1,005,507				
0411 Due to Other Governments					
0412 Due to Primary Government					
0413 Due to Component Unit					
0420 Accounts Payable	633,511				
0430 Contracts Payable					
0440 Current Portion of Long-Term Debt					
0450 Short-Term Payables					
0461 Accrued Salaries and Benefits	4,011,383				
0462 Payroll Deductions and Withholding	3,081,148				
0480 Unearned Revenues	604,518				
0490 Other Current Liabilities					
Total Liabilities	\$9,336,067				
0950 Deferred Inflows of Resources					
Fund Balances					
0810 Nonspendable Fund Balance					
0820 Restricted Fund Balance					
0830 Committed Fund Balance					
0840 Assigned Fund Balance	7,500,000				
0850 Unassigned Fund Balance	4,470,084				
Total Fund Balances	\$11,970,084				
Total Liabilities, Deferred Inflows Of Resources And Fund Balances	\$21,306,151				

LEA : 112676703 Spring Grove Area SD

Printed 11/22/2022 10:48:19 AM

Amounts Expressed in Whole Dollars		<u>Capital Reserve (690.</u> <u>1850)</u> <u>(31)</u>	<u>Capital Reserve (1431)</u> <u>(32)</u>	<u>Other Capital Projects</u> <u>Fund</u> <u>(39)</u>	<u>Debt Service</u> <u>(40)</u>	<u>Permanent</u> <u>(90)</u>
Liabilities And Deferred Inflows Of Resources And Fund Balances						
Liabilities						
0400	Due to Other Funds					
0411	Due to Other Governments					
0412	Due to Primary Government					
0413	Due to Component Unit					
0420	Accounts Payable		335,218			
0430	Contracts Payable					
0440	Current Portion of Long-Term Debt					
0450	Short-Term Payables					
0461	Accrued Salaries and Benefits					
0462	Payroll Deductions and Withholding					
0480	Unearned Revenues					
0490	Other Current Liabilities					
Total Liabilities			\$335,218			
0950	Deferred Inflows of Resources					
Fund Balances						
0810	Nonspendable Fund Balance					
0820	Restricted Fund Balance					
0830	Committed Fund Balance		1,993,208			
0840	Assigned Fund Balance					
0850	Unassigned Fund Balance					
Total Fund Balances			\$1,993,208			
Total Liabilities, Deferred Inflows Of Resources And Fund Balances			\$2,328,426			

LEA : 112676703 Spring Grove Area SD

Printed 11/22/2022 10:48:19 AM

Amounts Expressed in Whole Dollars		<u>Total Governmental Funds</u>
Liabilities And Deferred Inflows Of Resources And Fund Balances		
Liabilities		
0400 Due to Other Funds		1,005,507
0411 Due to Other Governments		
0412 Due to Primary Government		
0413 Due to Component Unit		
0420 Accounts Payable		968,729
0430 Contracts Payable		
0440 Current Portion of Long-Term Debt		
0450 Short-Term Payables		
0461 Accrued Salaries and Benefits		4,011,383
0462 Payroll Deductions and Withholding		3,081,148
0480 Unearned Revenues		604,518
0490 Other Current Liabilities		
Total Liabilities		\$9,671,285
0950 Deferred Inflows of Resources		
Fund Balances		
0810 Nonspendable Fund Balance		
0820 Restricted Fund Balance		
0830 Committed Fund Balance		1,993,208
0840 Assigned Fund Balance		7,500,000
0850 Unassigned Fund Balance		4,470,084
Total Fund Balances		\$13,963,292
Total Liabilities, Deferred Inflows Of Resources And Fund Balances		\$23,634,577

LEA : 112676703 Spring Grove Area SD

Printed 11/22/2022 10:48:38 AM

Amounts Expressed in Whole Dollars	<u>General Fund</u> <u>(10)</u>	<u>Student Sponsored</u> <u>Activity Fund</u> <u>(21)</u>	<u>Public Purpose Trust</u> <u>(27)</u>	<u>Other Compt Approved</u> <u>(28)</u>	<u>Athletic / Activity</u> <u>(29)</u>
Revenues					
6000 Revenue from Local Sources	49,078,758				
7000 Revenue from State Sources	26,399,493				
8000 Revenue from Federal Sources	3,296,926				
Total Revenues	\$78,775,177				
Expenditures					
1000 Instruction	45,469,542				
2000 Support Services	27,016,626				
3000 Operation of Non-Instructional Services	1,323,594				
4000 Facilities Acquisition, Construction and Improvement Services					
5110 Debt Service	6,345,098				
5130 Refund of Prior Year Revenues / Receipts	254,359				
5140 Leases	30,697				
Total Expenditures	\$80,439,916				
Excess (Deficiency) Of Revenues Over Expenditures	(\$1,664,739)				
Other Financing Sources (Uses)					
9110 Face Value of Bonds Issued					
9120 Proceeds from Refunding of Bonds					
9130 Bond Premiums					
9200 Proceeds from Extended-Term Financing and Leases					
9300 Interfund Transfers - IN					
9400 Sale of or Compensation for Loss of Fixed Assets					
9710 Transfers from Component Units					
9720 Transfers from Primary Governments					
9910 Other Financing Sources Not Listed in the 9000 Series					
9990 Insurance Recoveries					
5120 Debt Service – Refunded Bonds					
5150 Bond Discounts					
5200 Interfund Transfers – Out	350,000				
5300 Transfers Out to Component Units/Primary Governments					
Total Other Financing Sources (Uses)	(\$350,000)				

Amounts Expressed in Whole Dollars		<u>Capital Reserve (690.1850)</u> <u>(31)</u>	<u>Capital Reserve (1431)</u> <u>(32)</u>	<u>Other Capital Projects</u> <u>Fund</u> <u>(39)</u>	<u>Debt Service</u> <u>(40)</u>	<u>Permanent</u> <u>(90)</u>
Revenues						
6000	Revenue from Local Sources		4,448			
7000	Revenue from State Sources					
8000	Revenue from Federal Sources					
Total Revenues			\$4,448			
Expenditures						
1000	Instruction					
2000	Support Services		630,385			
3000	Operation of Non-Instructional Services					
4000	Facilities Acquisition, Construction and Improvement Services					
5110	Debt Service					
5130	Refund of Prior Year Revenues / Receipts					
5140	Leases					
Total Expenditures			\$630,385			
Excess (Deficiency) Of Revenues Over Expenditures			(\$625,937)			
Other Financing Sources (Uses)						
9110	Face Value of Bonds Issued					
9120	Proceeds from Refunding of Bonds					
9130	Bond Premiums					
9200	Proceeds from Extended-Term Financing and Leases					
9300	Interfund Transfers - IN		350,000			
9400	Sale of or Compensation for Loss of Fixed Assets					
9710	Transfers from Component Units					
9720	Transfers from Primary Governments					
9910	Other Financing Sources Not Listed in the 9000 Series					
9990	Insurance Recoveries					
5120	Debt Service – Refunded Bonds					
5150	Bond Discounts					
5200	Interfund Transfers – Out					
5300	Transfers Out to Component Units/Primary Governments					
Total Other Financing Sources (Uses)			\$350,000			

LEA : 112676703 Spring Grove Area SD

Printed 11/22/2022 10:48:38 AM

Amounts Expressed in Whole Dollars		<u>Total Governmental Funds</u>
Revenues		
6000	Revenue from Local Sources	49,083,206
7000	Revenue from State Sources	26,399,493
8000	Revenue from Federal Sources	3,296,926
Total Revenues		\$78,779,625
Expenditures		
1000	Instruction	45,469,542
2000	Support Services	27,647,011
3000	Operation of Non-Instructional Services	1,323,594
4000	Facilities Acquisition, Construction and Improvement Services	
5110	Debt Service	6,345,098
5130	Refund of Prior Year Revenues / Receipts	254,359
5140	Leases	30,697
Total Expenditures		\$81,070,301
Excess (Deficiency) Of Revenues Over Expenditures		(\$2,290,676)
Other Financing Sources (Uses)		
9110	Face Value of Bonds Issued	
9120	Proceeds from Refunding of Bonds	
9130	Bond Premiums	
9200	Proceeds from Extended-Term Financing and Leases	
9300	Interfund Transfers - IN	350,000
9400	Sale of or Compensation for Loss of Fixed Assets	
9710	Transfers from Component Units	
9720	Transfers from Primary Governments	
9910	Other Financing Sources Not Listed in the 9000 Series	
9990	Insurance Recoveries	
5120	Debt Service – Refunded Bonds	
5150	Bond Discounts	
5200	Interfund Transfers – Out	350,000
5300	Transfers Out to Component Units/Primary Governments	
Total Other Financing Sources (Uses)		\$0

Amounts Expressed in Whole Dollars		<u>General Fund</u> <u>(10)</u>	<u>Student Sponsored</u> <u>Activity Fund</u> <u>(21)</u>	<u>Public Purpose Trust</u> <u>(27)</u>	<u>Other Compt Approved</u> <u>(28)</u>	<u>Athletic / Activity</u> <u>(29)</u>
Special And Extraordinary Items						
9920	Special Items – Gains					
9930	Extraordinary Items – Gains					
5520	Special Items – Losses					
5530	Extraordinary Items – Losses					
Net Change In Fund Balances		(\$2,014,739)				
Fund Balance						
0001	Fund Balance - Beginning of Fiscal Year	13,984,824				
Fund Balance - End Of Year		\$11,970,085				

Amounts Expressed in Whole Dollars		<u>Capital Reserve (690.</u> <u>1850)</u> <u>(31)</u>	<u>Capital Reserve (1431)</u> <u>(32)</u>	<u>Other Capital Projects</u> <u>Fund</u> <u>(39)</u>	<u>Debt Service</u> <u>(40)</u>	<u>Permanent</u> <u>(90)</u>
Special And Extraordinary Items						
9920	Special Items – Gains					
9930	Extraordinary Items – Gains					
5520	Special Items – Losses					
5530	Extraordinary Items – Losses					
Net Change In Fund Balances			(\$275,937)			
Fund Balance						
0001	Fund Balance - Beginning of Fiscal Year		2,269,145			
Fund Balance - End Of Year			\$1,993,208			

Amounts Expressed in Whole Dollars		<u>Total Governmental Funds</u>
Special And Extraordinary Items		
9920	Special Items – Gains	
9930	Extraordinary Items – Gains	
5520	Special Items – Losses	
5530	Extraordinary Items – Losses	
Net Change In Fund Balances		(\$2,290,676)
Fund Balance		
0001	Fund Balance - Beginning of Fiscal Year	16,253,969
Fund Balance - End Of Year		\$13,963,293

LEA : 112676703 Spring Grove Area SD

Printed 11/22/2022 10:48:40 AM

Amounts Expressed in Whole Dollars		<u>Food Service</u> <u>(51)</u>	<u>Child Care</u> <u>Operations</u> <u>(52)</u>	<u>Other Enterprise</u> <u>(58)</u>	<u>TOTAL</u>	<u>Internal Service</u> <u>(60)</u>
Assets And Deferred Outflows Of Resources						
Current Assets						
0100	Cash and Cash Equivalents	1,220,762			1,220,762	
0110	Investments					
0130	Due From Other Funds	5,700			5,700	
0141	Due From Other Governments					
0142	State Revenue Receivable					
0143	Federal Revenue Receivable					
0146	Due from Primary Government					
0147	Due from Component Unit					
0150	Other Receivables	48,860			48,860	
0170	Inventories	69,547			69,547	
0180	Prepaid Expenses (Expenditures)					
0190	Other Current Assets					
Total Current Assets		\$1,344,869			\$1,344,869	
Noncurrent Assets						
0211	Land					
0212	Site Improvements (Net)					
0220	Buildings and Building Improvements (Net)					
0230	Machinery, Equipment and Furniture (Net)	59,153			59,153	
0250	Construction in Progress					
0260	Long Term Prepayments					
0290	Other Noncurrent Assets					
Total Noncurrent Assets		\$59,153			\$59,153	
0910	Deferred Outflows of Resources					
Total Assets And Deferred Outflows Of Resources		\$1,404,022			\$1,404,022	

LEA : 112676703 Spring Grove Area SD

Printed 11/22/2022 10:48:40 AM

Amounts Expressed in Whole Dollars	<u>Food Service</u> <u>(51)</u>	<u>Child Care</u> <u>Operations</u> <u>(52)</u>	<u>Other Enterprise</u> <u>(58)</u>	<u>TOTAL</u>	<u>Internal Service</u> <u>(60)</u>
Liabilities And Deferred Inflows Of Resources And Net Position					
Current Liabilities					
0400 Due to Other Funds	686			686	
0411 Due to Other Governments					
0413 Due to Component Unit					
0420 Accounts Payable	450			450	
0430 Contracts Payable					
0440 Current Portion of Long-Term Debt					
0450 Short-Term Payables					
0461 Accrued Salaries and Benefits	5,863			5,863	
0462 Payroll Deductions and Withholding					
0480 Unearned Revenues	132,805			132,805	
0490 Other Current Liabilities					
Total Current Liabilities	\$139,804			\$139,804	
Noncurrent Liabilities					
0510 Bonds Payable					
0520 Extended-Term Financing Agreements Payable					
0530 Lease Obligations					
0540 Accumulated Compensated Absences	21,940			21,940	
0550 Authority Lease Obligations					
0560 Other Post-Employment Benefits (OPEB)					
0570 Net Pension Liability					
0599 Other Noncurrent Liabilities					
Total Noncurrent Liabilities	\$21,940			\$21,940	
Total Liabilities	\$161,744			\$161,744	
0950 Deferred Inflows of Resources					
Net Position					
0791 Net Investment in Capital Assets					
0008 Restricted Net Position (0792 – 0798)					
0799 Unrestricted Net Position	1,242,278			1,242,278	
Total Net Position	\$1,242,278			\$1,242,278	
Total Liabilities And Deferred Inflows Of Resources And Net Position	\$1,404,022			\$1,404,022	

Amounts Expressed in Whole Dollars	<u>Food Service</u> <u>(51)</u>	<u>Child Care Operations</u> <u>(52)</u>	<u>Other Enterprise</u> <u>(58)</u>	<u>TOTAL</u>	<u>Internal Service</u> <u>(60)</u>
Operating Revenues					
6600 Food Service Revenue	310,919			310,919	
0071 Charges for Services					
0072 Other Operating Revenue	8,429			8,429	
Total Operating Revenues	\$319,348			\$319,348	
Operating Expenses					
100 Personnel Services – Salaries	693,425			693,425	
200 Personnel Services – Employee Benefits	531,740			531,740	
300 Purchased Professional and Technical Services	9,436			9,436	
400 Purchased Property Services	19,956			19,956	
500 Other Purchased Services	14,912			14,912	
600 Supplies	1,404,036			1,404,036	
740 Depreciation	3,610			3,610	
810 Dues and Fees	7,005			7,005	
880 Refunds of Prior Years' Receipts					
890 Miscellaneous Expenditures					
Total Operating Expenses	\$2,684,120			\$2,684,120	
Operating Income (Loss)	(\$2,364,772)			(\$2,364,772)	
Non Operating Revenues (Expenses)					
6500 Earnings on Investments	3,593			3,593	
6920 Contributions and Donations from Private Sources	3,111			3,111	
6930 Gains or Losses on Sale of Fixed Assets					
6991 Refunds of a Prior Year Expenditure					
7000 Revenue from State Sources	234,839			234,839	
8000 Revenue from Federal Sources	2,931,732			2,931,732	
9990 Insurance Recoveries					
820 Claims and Judgments Against the LEA					
830 Interest					
TOTAL Non Operating Revenues (Expenses)	\$3,173,275			\$3,173,275	
Income (Loss) Before Contributions And Transfers	\$808,503			\$808,503	

Amounts Expressed in Whole Dollars	<u>Food Service</u> (51)	<u>Child Care Operations</u> (52)	<u>Other Enterprise</u> (58)	<u>TOTAL</u>	<u>Internal Service</u> (60)
Contributions, Transfers, and Special and Extraordinary Items					
5200 Interfund Transfers – Out					
5300 Transfers Out to Component Units/Primary Governments					
5520 Special Items – Losses					
5530 Extraordinary Items – Losses					
9300 Interfund Transfers - IN					
9500 Capital Contributions					
9700 Transfers IN From Component Units/Primary Governments					
9920 Special Items – Gains					
9930 Extraordinary Items – Gains					
Change In Net Position	\$808,503			\$808,503	
0002 Net Position - Beginning of Fiscal Year	433,775			433,775	
0003 Accounting Changes / Residual Equity Transfers					
Net Position - End Of Year	\$1,242,278			\$1,242,278	

LEA : 112676703 Spring Grove Area SD

Printed 11/22/2022 10:48:52 AM

Amounts Expressed in Whole Dollars		<u>Food Service</u> <u>(51)</u>	<u>Child Care Operations</u> <u>(52)</u>	<u>Other Enterprise</u> <u>(58)</u>	<u>TOTAL</u>	<u>Internal Service(60)</u>
Cash Flows From Operating Activities						
0011	Cash Receipts From Users	343,432			343,432	
0012	Cash Receipts From Assessments Made to Other Funds					
0013	Cash Receipts From Earnings on Investments					
0014	Cash Receipts From Other Operating Revenue					
0015	Cash Payments To Employees For Services	1,238,859			1,238,859	
0016	Cash Payments For Insurance Claims					
0017	Cash Payments To Suppliers For Goods and Services	1,579,860			1,579,860	
0018	Cash Payments For Other Operating Expenses					
Net Cash Provided By (Used For) Operating Activities		(\$2,475,287)			(\$2,475,287)	
Cash Flows From Non-Capital Financing Activities						
0021	Receipts From Local Sources - 6000	3,111			3,111	
0022	Receipts From State Sources - 7000	236,407			236,407	
0023	Receipts From Federal Sources -8000	2,967,906			2,967,906	
0024	Notes and Loans Received (Repaid)					
0025	Interest Paid on Notes/Loans - 5100-830					
0026	Operating Transfers In (Out)/Residual Equity Trans					
0027	Operating Transfers In (Out) Primary Government / Comp Unit					
0028	Receipts From Refund of Prior Year Expenditures - 6991					
0029	Special and Extraordinary Gains (losses)					
0030	Receipts from Insurance Recoveries -9990					
Net Cash Prov By (Used for) Non-Capital Financing Activities		\$3,207,424			\$3,207,424	
Cash Flows From Capital and Related Financing Activities						
0031	Payments For Fac Acq, Const, and Imp - 4000	(31,139)			(31,139)	
0032	Gain / (Loss) on Sale of Fixed Assets - 6930					
0033	Proceeds From Extended Term Financing - 9200					
0034	Principal Paid on Financing Agreements					
0035	Interest Paid on Financing Agreements - 5100-830					
0036	(Inc) Dec in Contributed Capital					
Net Cash Prov By (Used for) Capital and Related Financing Activities		(\$31,139)			(\$31,139)	
Cash Flows From Investing Activities						
0041	Earnings on Investments - 6500	3,593			3,593	
0042	Purchase of Inv Securities / Deposits to Inv Pools					
0043	Receipts From Investment Pool Withdrawals					
0044	Proceeds from Sale and Maturity of Inv Securities					

LEA : 112676703 Spring Grove Area SD

Printed 11/22/2022 10:48:52 AM

0045 Loans Received (Paid)		
Net Cash Prov By (Used for) Investing Activities	\$3,593	\$3,593

LEA : 112676703 Spring Grove Area SD

Printed 11/22/2022 10:48:52 AM

	<u>Food Service</u> <u>(51)</u>	<u>Child Care Operations</u> <u>(52)</u>	<u>Other Enterprise</u> <u>(58)</u>	<u>TOTAL</u>	<u>Internal Service</u> <u>(60)</u>
Net Increase (Decrease) in Cash Flows	704,591			704,591	
0004 Cash and Cash Equivalents Beginning of Year	516,171			516,171	
Cash and Cash Equivalents at Year End	\$1,220,762			\$1,220,762	
<hr/>					
Reconciliation of Operating Income (Loss) To Net Cash Provided by (Used For) Operating Activities					
0005 Operating Income (Loss) per REP	(2,364,772)			(2,364,772)	
Adjustments					
0051 Depreciation and Net Amortization	3,610			3,610	
0052 Provision for Uncollectible Accounts					
0053 Other Adjustments					
Effect of Changes in Assets, Liabilities, Deferred Outflows and Deferred Inflows					
0054 (Inc) Dec In Accounts Receivable (0120-0150)	(47,366)			(47,366)	
0055 Advances to Other Funds (0160)	20,914			20,914	
0056 (Inc) Dec in Inventories (0170)	(30,088)			(30,088)	
0057 (Inc) Dec in Prepaid Expenses (0180)					
0058 (Inc) Dec in Other Current or Noncurrent Assets	(9,302)			(9,302)	
0064 Deferred Outflows (0910)					
0059 Inc (Dec) in Accounts Payable (0400-0450)	411			411	
0060 Inc (Dec) in Accrued Salaries/Benefits (0461)	(4,392)			(4,392)	
0065 Inc (Dec) in Net Pension Liabilities (0570)					
0066 Inc (Dec) in Other Postemp Benefit Oblig (0560)					
0061 Inc (Dec) in Payroll Deductions/Withholding (0462)					
0062 Inc (Dec) in Unearned Revenue (0480)	71,450			71,450	
0063 Inc (Dec) in Other Current or Noncurrent Liabilities	(115,752)			(115,752)	
0067 Deferred Inflows (0950)					
Total Adjustments	(\$110,515)			(\$110,515)	
Cash Provided By (Used for) Total	(\$2,475,287)			(\$2,475,287)	
<hr/>					

COMBINED STATEMENT OF CASH FLOWS
SCHEDULE OF NONCASH INVESTING, CAPITAL, AND FINANCING ACTIVITIES

Explanation of Transaction and Balance Sheet Effect	Amount
Total	

LEA : 112676703 Spring Grove Area SD

Printed 11/22/2022 10:48:53 AM

Amounts Expressed in Whole Dollars		<u>Private Purpose Trust</u> <u>(71)</u>	<u>Investment Trust</u> <u>(72)</u>	<u>Pension Trust</u> <u>(73)</u>	<u>Student Activity Custodial</u> <u>(81)</u>
Assets And Deferred Outflows Of Resources					
Assets					
0100	Cash and Cash Equivalents				132,738
0110	Investments				
0130	Due From Other Funds				
0140	Due from Other Governments, Primary Government and Component Units				
0150	Other Receivables				
0170	Inventories				
0180	Prepaid Expenses (Expenditures)				
0190	Other Current Assets				
0220	Buildings and Building Improvements (Net)				
0230	Machinery, Equipment and Furniture (Net)				
Total Assets					\$132,738
0910	Deferred Outflows of Resources				
Total Assets And Deferred Outflows Of Resources					\$132,738

LEA : 112676703 Spring Grove Area SD

Printed 11/22/2022 10:48:53 AM

Amounts Expressed in Whole Dollars		<u>Other Custodial</u> <u>(89)</u>	<u>Fiduciary Component Units</u> <u>(98)</u>	<u>Total Fiduciary Funds</u>
Assets And Deferred Outflows Of Resources				
Assets				
0100	Cash and Cash Equivalents			132,738
0110	Investments			
0130	Due From Other Funds			
0140	Due from Other Governments, Primary Government and Component Units			
0150	Other Receivables			
0170	Inventories			
0180	Prepaid Expenses (Expenditures)			
0190	Other Current Assets			
0220	Buildings and Building Improvements (Net)			
0230	Machinery, Equipment and Furniture (Net)			
Total Assets				\$132,738
0910	Deferred Outflows of Resources			
Total Assets And Deferred Outflows Of Resources				\$132,738

LEA : 112676703 Spring Grove Area SD

Printed 11/22/2022 10:48:53 AM

Amounts Expressed in Whole Dollars		<u>Private Purpose Trust</u> <u>(71)</u>	<u>Investment Trust</u> <u>(72)</u>	<u>Pension Trust</u> <u>(73)</u>	<u>Student Activity Custodial</u> <u>(81)</u>
Liabilities, Deferred Inflows Of Resources And Net Position					
Liabilities					
0400	Due to Other Funds				18,237
0410	Due to Other Governments, Primary Government and Component Units				
0420	Accounts Payable				
0430	Contracts Payable				
0450	Short-Term Payables				
0460	Payroll Accruals and Withholdings				
0480	Unearned Revenues				
0490	Other Current Liabilities				
Total Liabilities					\$18,237
0950	Deferred Inflows of Resources				
Net Position					
0791	Net Investment in Capital Assets				
0009	Restricted Net Position (0792 – 0798)				114,501
0799	Unrestricted Net Position				
Total Net Position					\$114,501
Total Liabilities, Deferred Inflows Of Resources And Net Position					\$132,738

LEA : 112676703 Spring Grove Area SD

Printed 11/22/2022 10:48:53 AM

Amounts Expressed in Whole Dollars		<u>Other Custodial</u> <u>(89)</u>	<u>Fiduciary Component Units</u> <u>(98)</u>	<u>Total Fiduciary Funds</u>
Liabilities, Deferred Inflows Of Resources And Net Position				
Liabilities				
0400	Due to Other Funds			18,237
0410	Due to Other Governments, Primary Government and Component Units			
0420	Accounts Payable			
0430	Contracts Payable			
0450	Short-Term Payables			
0460	Payroll Accruals and Withholdings			
0480	Unearned Revenues			
0490	Other Current Liabilities			
Total Liabilities				\$18,237
0950	Deferred Inflows of Resources			
Net Position				
0791	Net Investment in Capital Assets			
0009	Restricted Net Position (0792 – 0798)			114,501
0799	Unrestricted Net Position			
Total Net Position				\$114,501
Total Liabilities, Deferred Inflows Of Resources And Net Position				\$132,738

LEA : 112676703 Spring Grove Area SD

Printed 11/22/2022 10:48:56 AM

Amounts Expressed in Whole Dollars	<u>Private Purpose Trust</u> <u>(71)</u>	<u>Investment Trust</u> <u>(72)</u>	<u>Pension Trust</u> <u>(73)</u>	<u>Student Activity</u> <u>Custodial</u> <u>(81)</u>	<u>Other Custodial</u> <u>(89)</u>	<u>Fiduciary Component</u> <u>Units</u> <u>(98)</u>
Additions						
0091 Gifts and Contributions				193,489		
0095 Net Investment Earnings				697		
0092 Other Additions						
Deductions						
0093 Scholarships Awarded						
0094 Other Deductions				176,818		
Change In Net Position				\$17,368		
0006 Net Position – Beginning of Fiscal Year				97,133		
0007 Net Position Held in Trust for Pension Benefits						
Net Position - End of Fiscal Year				\$114,501		

LEA : 112676703 Spring Grove Area SD

Printed 11/22/2022 10:48:56 AM

Amounts Expressed in Whole Dollars		<u>Total Fiduciary</u>
		<u>Funds</u>
Additions		
0091	Gifts and Contributions	193,489
0095	Net Investment Earnings	697
0092	Other Additions	
Deductions		
0093	Scholarships Awarded	
0094	Other Deductions	176,818
Change In Net Position		\$17,368
0006	Net Position – Beginning of Fiscal Year	97,133
0007	Net Position Held in Trust for Pension Benefits	
Net Position - End of Fiscal Year		\$114,501

	Revenue Reported In Current Year	Current Year Tax Accrual	Prior Year Tax Accrual	Taxes Collected In Current Year
Revenue from Local Sources				
6111 Current Real Estate Taxes	40,586,415.91			40,586,415.91
6113 Public Utility Realty Taxes	44,826.45			44,826.45
6151 Current Act 511 Earned Income Taxes	4,177,064.75			4,177,064.75
6153 Current Act 511 Real Estate Transfer Taxes	941,859.42			941,859.42
6411 Delinquent Real Estate Taxes	958,098.11			958,098.11
6451 Delinquent Act 511 Earned Income Taxes	58,644.68			58,644.68
6500 Earnings on Investments	112,344.64			
6832 Federal IDEA Revenue Received as Pass Through	706,234.43			
6910 Rentals	35,520.51			
6920 Contributions and Donations from Private Sources	36,988.15			
6944 Receipts from Other LEAs in Pennsylvania - Education	637,983.80			
6949 Other Tuition from Patrons	24,474.00			
6991 Refunds of a Prior Year Expenditure	69,156.15			
6999 Other Revenues Not Specified Above	201,731.06			
TOTAL Revenue from Local Sources	\$49,078,758.14			\$47,048,753.02

	Revenue Reported In Current Year			
<u>Revenue from State Sources</u>				
7111 Basic Education Funding-Formula	11,604,251.23			
	1,279,280.34			
7160 Tuition for Orphans Subsidy	125,121.07			
7271 Special Education funds for School-Aged Pupils	2,557,861.93			
7311 Pupil Transportation Subsidy	1,590,051.94			
7312 Nonpublic and Charter School Pupil Transportation Subsidy	55,440.00			
7320 Rental and Sinking Fund Payments / Building Reimbursement Subsidy				
7340 State Property Tax Reduction Allocation	999,003.20			
7505 Ready to Learn Block Grant	513,525.00			
7820 State Share of Retirement Contributions	6,788,813.48			
TOTAL Revenue from State Sources	\$26,399,492.85			

Revenue Reported In Current Year				
Revenue from Federal Sources				
8512	IDEA, Part B	15,524.16		
8514	NCLB, Title I - Improving the Academic Achievement of the Disadvantaged	592,439.90		
8515	NCLB, Title II - Preparing, Training and Recruiting High Quality Teachers and Principals	106,713.00		
8517	NCLB, Title IV - 21St Century Schools	36,794.00		
8741	Elementary and Secondary School Emergency Relief Fund (ESSER)	8,805.00		
8743	ESSER II - Elementary and Secondary School Emergency Relief Fund	1,038,009.24		
8749	Other CARES Act Funding	192,004.00		
8753	ARP ESSER Afterschool Programs			
8810	School-Based Access Medicaid Reimbursement Program (SBAP) Reimbursements (Access)	282,205.29		
TOTAL Revenue from Federal Sources		\$3,296,925.78		
TOTAL FROM ALL SOURCES		\$78,775,176.77		\$47,048,753.02

LEA : 112676703 Spring Grove Area SD

Printed 11/22/2022 10:49:01 AM

	<u>General Fund (10)</u>	<u>Student Sponsored Activity Fund (21)</u>	<u>Public Purpose Trust (27)</u>	<u>Other Compt Approved (28)</u>	<u>Athletic / Activity (29)</u>	<u>Capital Reserve (690, 1850) (31)</u>
6000 Revenue from Local Sources						
6111 Current Real Estate Taxes	40,586,415.91					
6112 Interim Real Estate Taxes	281,843.70					
6113 Public Utility Realty Taxes	44,826.45					
6151 Current Act 511 Earned Income Taxes	4,177,064.75					
6153 Current Act 511 Real Estate Transfer Taxes	941,859.42					
6411 Delinquent Real Estate Taxes	958,098.11					
6451 Delinquent Act 511 Earned Income Taxes	58,644.68					
6500 Earnings on Investments	112,344.64					
6700 Revenues from LEA Activities	55,482.00					
6832 Federal IDEA Revenue Received as Pass Through	706,234.43					
6833 Federal ARRA IDEA Revenue Received as Pass Through	150,090.38					
6910 Rentals	35,520.51					
6920 Contributions and Donations from Private Sources	36,988.15					
6944 Receipts from Other LEAs in Pennsylvania - Education	637,983.80					
6949 Other Tuition from Patrons	24,474.00					
6991 Refunds of a Prior Year Expenditure	69,156.15					
6999 Other Revenues Not Specified Above	201,731.06					
6000 Total Revenue from Local Sources	\$49,078,758.14					
7000 Revenue from State Sources						
7111 Basic Education Funding-Formula	11,604,251.23					
7112 Basic Education Funding-Social Security	1,279,280.34					
7160 Tuition for Orphans Subsidy	125,121.07					
7271 Special Education funds for School-Aged Pupils	2,557,861.93					
7311 Pupil Transportation Subsidy	1,590,051.94					
7312 Nonpublic and Charter School Pupil Transportation Subsidy	55,440.00					
7320 Rental and Sinking Fund Payments / Building Reimbursement Subsidy	886,144.66					
7340 State Property Tax Reduction Allocation	999,003.20					
7505 Ready to Learn Block Grant	513,525.00					
7820 State Share of Retirement Contributions	6,788,813.48					
7000 Total Revenue from State Sources	\$26,399,492.85					
8000 Revenue from Federal Sources						
8512 IDEA, Part B	15,524.16					
8514 NCLB, Title I - Improving the Academic Achievement of the Disadvantaged	592,439.90					
8515 NCLB, Title II - Preparing, Training and Recruiting High Quality Teachers and Principals	106,713.00					

LEA : 112676703 Spring Grove Area SD

Printed 11/22/2022 10:49:01 AM

	<u>Capital Reserve</u> <u>(1431) (32)</u>	<u>Other Capital</u> <u>Projects Fund (39)</u>	<u>Debt Service (40)</u>	<u>Permanent (90)</u>	<u>Total</u>
6000 Revenue from Local Sources					
6111 Current Real Estate Taxes					40,586,415.91
6112 Interim Real Estate Taxes					281,843.70
6113 Public Utility Realty Taxes					44,826.45
6151 Current Act 511 Earned Income Taxes					4,177,064.75
6153 Current Act 511 Real Estate Transfer Taxes					941,859.42
6411 Delinquent Real Estate Taxes					958,098.11
6451 Delinquent Act 511 Earned Income Taxes					58,644.68
6500 Earnings on Investments	4,447.87				116,792.51
6700 Revenues from LEA Activities					55,482.00
6832 Federal IDEA Revenue Received as Pass Through					706,234.43
6833 Federal ARRA IDEA Revenue Received as Pass Through					150,090.38
6910 Rentals					35,520.51
6920 Contributions and Donations from Private Sources					36,988.15
6944 Receipts from Other LEAs in Pennsylvania - Education					637,983.80
6949 Other Tuition from Patrons					24,474.00
6991 Refunds of a Prior Year Expenditure					69,156.15
6999 Other Revenues Not Specified Above					201,731.06
6000 Total Revenue from Local Sources	\$4,447.87				\$49,083,206.01
7000 Revenue from State Sources					
7111 Basic Education Funding-Formula					11,604,251.23
7112 Basic Education Funding-Social Security					1,279,280.34
7160 Tuition for Orphans Subsidy					125,121.07
7271 Special Education funds for School-Aged Pupils					2,557,861.93
7311 Pupil Transportation Subsidy					1,590,051.94
7312 Nonpublic and Charter School Pupil Transportation Subsidy					55,440.00
7320 Rental and Sinking Fund Payments / Building Reimbursement Subsidy					886,144.66
7340 State Property Tax Reduction Allocation					999,003.20
7505 Ready to Learn Block Grant					513,525.00
7820 State Share of Retirement Contributions					6,788,813.48
7000 Total Revenue from State Sources					\$26,399,492.85
8000 Revenue from Federal Sources					
8512 IDEA, Part B					15,524.16
8514 NCLB, Title I - Improving the Academic Achievement of the Disadvantaged					592,439.90
8515 NCLB, Title II - Preparing, Training and Recruiting High Quality Teachers and Principals					106,713.00

LEA : 112676703 Spring Grove Area SD

Printed 11/22/2022 10:49:01 AM

	<u>General Fund (10)</u>	<u>Student Sponsored Activity Fund (21)</u>	<u>Public Purpose Trust (27)</u>	<u>Other Compt Approved (28)</u>	<u>Athletic / Activity (29)</u>	<u>Capital Reserve (690, 1850) (31)</u>
8000 Revenue from Federal Sources						
8517 NCLB, Title IV - 21St Century Schools	36,794.00					
8741 Elementary and Secondary School Emergency Relief Fund (ESSER)	8,805.00					
8743 ESSER II - Elementary and Secondary School Emergency Relief Fund	1,038,009.24					
8744 ARP ESSER - Elementary and Secondary School Emergency Relief Fund	1,005,150.30					
8749 Other CARES Act Funding	192,004.00					
8753 ARP ESSER Afterschool Programs	19,280.89					
8810 School-Based Access Medicaid Reimbursement Program (SBAP) Reimbursements (Access)	282,205.29					
8000 Total Revenue from Federal Sources	\$3,296,925.78					
9000 Other Financing Sources						
9310 General Fund Transfers						
9000 Total Other Financing Sources						
Total From All Sources	\$78,775,176.77					

LEA : 112676703 Spring Grove Area SD

Printed 11/22/2022 10:49:01 AM

	<u>Capital Reserve</u> <u>(1431) (32)</u>	<u>Other Capital</u> <u>Projects Fund (39)</u>	<u>Debt Service (40)</u>	<u>Permanent (90)</u>	<u>Total</u>
8000 Revenue from Federal Sources					
8517 NCLB, Title IV - 21st Century Schools					36,794.00
8741 Elementary and Secondary School Emergency Relief Fund (ESSER)					8,805.00
8743 ESSER II - Elementary and Secondary School Emergency Relief Fund					1,038,009.24
8744 ARP ESSER - Elementary and Secondary School Emergency Relief Fund					1,005,150.30
8749 Other CARES Act Funding					192,004.00
8753 ARP ESSER Afterschool Programs					19,280.89
8810 School-Based Access Medicaid Reimbursement Program (SBAP) Reimbursements (Access)					282,205.29
8000 Total Revenue from Federal Sources					\$3,296,925.78
9000 Other Financing Sources					
9310 General Fund Transfers	350,000.00				350,000.00
9000 Total Other Financing Sources	\$350,000.00				\$350,000.00
Total From All Sources	\$354,447.87				\$79,129,624.64

LEA : 112676703 Spring Grove Area SD

Printed 11/22/2022 10:49:06 AM

	<u>General Fund (10)</u>	<u>Student Sponsored</u> <u>Activity Fund (21)</u>	<u>Public Purpose Trust (27)</u>	<u>Other Compt Approved</u> <u>(28)</u>	<u>Athletic / Activity (29)</u>	<u>Capital Reserve (690.</u> <u>1850) (31)</u>
Revenue from Local Sources	49,078,758.14					
Revenue from State Sources	26,399,492.85					
Revenue from Federal Sources	3,296,925.78					
Other Financing Sources						
Total From All Sources	\$78,775,176.77					

LEA : 112676703 Spring Grove Area SD

Printed 11/22/2022 10:49:06 AM

	<u>Capital Reserve (1431)</u> <u>(32)</u>	<u>Other Capital Projects</u> <u>Fund (39)</u>	<u>Debt Service (40)</u>	<u>Permanent (90)</u>	<u>Total</u>
Revenue from Local Sources	4,447.87				49,083,206.01
Revenue from State Sources					26,399,492.85
Revenue from Federal Sources					3,296,925.78
Other Financing Sources	350,000.00				350,000.00
Total From All Sources	\$354,447.87				\$79,129,624.64

LEA : 112676703 Spring Grove Area SD

Printed 11/22/2022 10:49:11 AM

General Fund (10)

1000 Instruction	Total
100 <u>Personnel Services – Salaries</u>	
100 Personnel Services – Salaries	22,132,573.58
Total Personnel Services – Salaries	\$22,132,573.58
200 <u>Personnel Services – Employee Benefits</u>	
210 Group Insurance – Contracted Provider	2,310.16
220 Social Security Contributions	1,619,529.43
230 PSERS Retirement Contributions	7,956,821.61
250 Unemployment Compensation	136,003.12
260 Workers' Compensation	177,120.96
270 Group Insurance – Self-Insurance	4,402,529.28
291 Other Retirement Plans	2,068.73
Total Personnel Services – Employee Benefits	\$14,296,383.29
300 <u>Purchased Professional and Technical Services</u>	
322 Professional Educational Services – Ius	2,658,158.66
329 Professional Educational Services – Other	101,295.79
330 Other Professional Services	3,960.87
340 Technical Services	(33.88)
Total Purchased Professional and Technical Services	\$2,763,381.44
400 <u>Purchased Property Services</u>	
430 Repairs and Maintenance Services	50,016.62
440 Rentals	11,818.19
Total Purchased Property Services	\$61,834.81
500 <u>Other Purchased Services</u>	
510 Student Transportation Services	10,284.31
530 Communications	3,800.00
549 Other Advertising/Public Relations	147.37
550 Printing and Binding	6,363.10
561 Tuition To Other School Districts Within the State	425,096.06
562 Tuition To Pennsylvania Charter Schools	2,593,853.54
564 Tuition To Career and Technology Centers	1,541,322.62
567 Tuition To Approved Private Schools (APS) and PA Chartered Schools for the Deaf and Blind	114,434.33
568 Tuition To Private Residential Rehabilitative Institutions (PRRI) [In-State] and Detention Centers	623,286.25
569 Tuition – Other	45,695.32
580 Travel	2,984.96
594 IU Payment By Withholding for Institutionalized Children's Programs – Special Classes	789.79
Total Other Purchased Services	\$5,368,057.65
600 <u>Supplies</u>	
610 General Supplies	555,946.57
630 Food	11,741.81
640 Books and Periodicals	76,782.22
650 Supplies & Fees – Technology Related	64,799.63
Total Supplies	\$709,270.23

LEA : 112676703 Spring Grove Area SD

Printed 11/22/2022 10:49:11 AM

General Fund (10)		
1000 Instruction		<u>Total</u>
700 <u>Property</u>		
752 Capital Equipment – Original and Additional	110,122.09	
762 Capitalized Equipment - Replacement	19,633.22	
Total Property	\$129,755.31	
800 <u>Other Objects</u>		
810 Dues and Fees	8,286.00	
Total Other Objects	\$8,286.00	
Total 1000 Instruction	\$45,469,542.31	

LEA : 112676703 Spring Grove Area SD

Printed 11/22/2022 10:49:11 AM

General Fund (10)				
1100 Regular Programs – Elementary / Secondary	<u>Elementary</u>	<u>Secondary</u>	<u>Federal</u>	<u>Total</u>
100 <u>Personnel Services – Salaries</u>				
100 Personnel Services – Salaries	9,283,852.15	8,038,566.27	325,853.69	17,648,272.11
Total Personnel Services – Salaries	\$9,283,852.15	\$8,038,566.27	\$325,853.69	\$17,648,272.11
200 <u>Personnel Services – Employee Benefits</u>				
210 Group Insurance – Contracted Provider	893.91	722.75	25.20	1,641.86
220 Social Security Contributions	679,119.90	589,018.08	24,285.43	1,292,423.41
230 PSERS Retirement Contributions	3,524,145.22	2,792,155.09	79,162.94	6,395,463.25
250 Unemployment Compensation	52,197.16	42,564.54	1,427.39	96,189.09
260 Workers' Compensation	74,329.74	64,306.84	2,606.92	141,243.50
270 Group Insurance – Self-Insurance	1,618,540.05	1,522,724.34	41,350.49	3,182,614.88
Total Personnel Services – Employee Benefits	\$5,949,225.98	\$5,011,491.64	\$148,858.37	\$11,109,575.99
300 <u>Purchased Professional and Technical Services</u>				
322 Professional Educational Services – Ius	10,787.54	72,620.56		83,408.10
330 Other Professional Services	111.76	99.11		210.87
340 Technical Services	(6.30)	(27.58)		(33.88)
Total Purchased Professional and Technical Services	\$10,893.00	\$72,692.09		\$83,585.09
400 <u>Purchased Property Services</u>				
430 Repairs and Maintenance Services	14,536.38	34,606.81		49,143.19
440 Rentals	6,677.68	5,140.51		11,818.19
Total Purchased Property Services	\$21,214.06	\$39,747.32		\$60,961.38
500 <u>Other Purchased Services</u>				
510 Student Transportation Services	1,529.00	7,610.31		9,139.31
550 Printing and Binding		6,363.10		6,363.10
561 Tuition To Other School Districts Within the State	1,696.00	81,205.98		82,901.98
562 Tuition To Pennsylvania Charter Schools	652,781.13	1,120,205.82		1,772,986.95
568 Tuition To Private Residential Rehabilitative Institutions (PRRI) [In-State] and Detention Centers	122,305.25	181,560.33		303,865.58
569 Tuition – Other		3,337.05		3,337.05
580 Travel		1,686.96		1,686.96
Total Other Purchased Services	\$778,311.38	\$1,401,969.55		\$2,180,280.93
600 <u>Supplies</u>				
610 General Supplies	138,297.06	136,199.58	160,462.09	434,958.73
630 Food	(39.16)	947.18		908.02
640 Books and Periodicals	7,420.21	17,938.69	39,773.57	65,132.47
650 Supplies & Fees – Technology Related	16,433.16	43,899.47		60,332.63
Total Supplies	\$162,111.27	\$198,984.92	\$200,235.66	\$561,331.85
700 <u>Property</u>				
752 Capital Equipment – Original and Additional	23,725.25	83,980.18		107,705.43
762 Capitalized Equipment - Replacement	3,969.00	4,346.31	11,317.91	19,633.22
Total Property	\$27,694.25	\$88,326.49	\$11,317.91	\$127,338.65
800 <u>Other Objects</u>				
810 Dues and Fees	90.00	8,196.00		8,286.00

LEA : 112676703 Spring Grove Area SD

Printed 11/22/2022 10:49:11 AM

General Fund (10)

1100 Regular Programs – Elementary / Secondary

	<u>Elementary</u>	<u>Secondary</u>	<u>Federal</u>	<u>Total</u>
Total Other Objects	\$90.00	\$8,196.00		\$8,286.00
Total 1100 Regular Programs – Elementary / Secondary	\$16,233,392.09	\$14,859,974.28	\$686,265.63	\$31,779,632.00

LEA : 112676703 Spring Grove Area SD

Printed 11/22/2022 10:49:11 AM

General Fund (10)

1110 Regular Programs

	Elementary	Secondary	Federal	Total
100 <u>Personnel Services – Salaries</u>				
100 Personnel Services – Salaries	9,283,852.15	8,038,566.27	325,853.69	17,648,272.11
Total Personnel Services – Salaries	\$9,283,852.15	\$8,038,566.27	\$325,853.69	\$17,648,272.11
200 <u>Personnel Services – Employee Benefits</u>				
210 Group Insurance – Contracted Provider	893.91	722.75	25.20	1,641.86
220 Social Security Contributions	679,119.90	589,018.08	24,285.43	1,292,423.41
230 PSERS Retirement Contributions	3,524,145.22	2,792,155.09	79,162.94	6,395,463.25
250 Unemployment Compensation	52,197.16	42,564.54	1,427.39	96,189.09
260 Workers' Compensation	74,329.74	64,306.84	2,606.92	141,243.50
270 Group Insurance – Self-Insurance	1,618,540.05	1,522,724.34	41,350.49	3,182,614.88
Total Personnel Services – Employee Benefits	\$5,949,225.98	\$5,011,491.64	\$148,858.37	\$11,109,575.99
300 <u>Purchased Professional and Technical Services</u>				
322 Professional Educational Services – Ius	10,787.54	72,620.56		83,408.10
330 Other Professional Services	111.76	99.11		210.87
340 Technical Services	(6.30)	(27.58)		(33.88)
Total Purchased Professional and Technical Services	\$10,893.00	\$72,692.09		\$83,585.09
400 <u>Purchased Property Services</u>				
430 Repairs and Maintenance Services	14,536.38	34,606.81		49,143.19
440 Rentals	6,677.68	5,140.51		11,818.19
Total Purchased Property Services	\$21,214.06	\$39,747.32		\$60,961.38
500 <u>Other Purchased Services</u>				
510 Student Transportation Services	1,529.00	7,610.31		9,139.31
550 Printing and Binding		6,363.10		6,363.10
561 Tuition To Other School Districts Within the State	1,696.00	81,205.98		82,901.98
562 Tuition To Pennsylvania Charter Schools	652,781.13	1,120,205.82		1,772,986.95
568 Tuition To Private Residential Rehabilitative Institutions (PRRI) [In-State] and Detention Centers	122,305.25	181,560.33		303,865.58
569 Tuition – Other		3,337.05		3,337.05
580 Travel		1,686.96		1,686.96
Total Other Purchased Services	\$778,311.38	\$1,401,969.55		\$2,180,280.93
600 <u>Supplies</u>				
610 General Supplies	138,297.06	136,199.58	160,462.09	434,958.73
630 Food	(39.16)	947.18		908.02
640 Books and Periodicals	7,420.21	17,938.69	39,773.57	65,132.47
650 Supplies & Fees – Technology Related	16,433.16	43,899.47		60,332.63
Total Supplies	\$162,111.27	\$198,984.92	\$200,235.66	\$561,331.85
700 <u>Property</u>				
752 Capital Equipment – Original and Additional	23,725.25	83,980.18		107,705.43
762 Capitalized Equipment - Replacement	3,969.00	4,346.31	11,317.91	19,633.22
Total Property	\$27,694.25	\$88,326.49	\$11,317.91	\$127,338.65
800 <u>Other Objects</u>				
810 Dues and Fees	90.00	8,196.00		8,286.00

LEA : 112676703 Spring Grove Area SD

Printed 11/22/2022 10:49:11 AM

General Fund (10)

1110 Regular Programs

	<u>Elementary</u>	<u>Secondary</u>	<u>Federal</u>	<u>Total</u>
Total Other Objects	\$90.00	\$8,196.00		\$8,286.00
Total 1110 Regular Programs	\$16,233,392.09	\$14,859,974.28	\$686,265.63	\$31,779,632.00

LEA : 112676703 Spring Grove Area SD

Printed 11/22/2022 10:49:11 AM

General Fund (10)

1200 Special Programs – Elementary / Secondary

	Elementary	Secondary	Federal	Total
100 Personnel Services – Salaries				
100 Personnel Services – Salaries	1,975,849.65	2,249,638.29		4,225,487.94
Total Personnel Services – Salaries	\$1,975,849.65	\$2,249,638.29		\$4,225,487.94
200 Personnel Services – Employee Benefits				
210 Group Insurance – Contracted Provider	368.42	291.08		659.50
220 Social Security Contributions	144,010.87	163,552.74		307,563.61
230 PSERS Retirement Contributions	690,144.40	782,227.32		1,472,371.72
250 Unemployment Compensation	20,696.23	17,578.38		38,274.61
260 Workers' Compensation	15,807.07	17,999.87		33,806.94
270 Group Insurance – Self-Insurance	565,548.97	639,928.94		1,205,477.91
291 Other Retirement Plans	1,096.43	972.30		2,068.73
Total Personnel Services – Employee Benefits	\$1,437,672.39	\$1,622,550.63		\$3,060,223.02
300 Purchased Professional and Technical Services				
322 Professional Educational Services – Ius	731,921.03	986,504.73	856,324.80	2,574,750.56
330 Other Professional Services	3,750.00			3,750.00
Total Purchased Professional and Technical Services	\$735,671.03	\$986,504.73	\$856,324.80	\$2,578,500.56
500 Other Purchased Services				
510 Student Transportation Services		760.00		760.00
530 Communications			3,800.00	3,800.00
549 Other Advertising/Public Relations	78.11	69.26		147.37
561 Tuition To Other School Districts Within the State	81,005.95	258,672.72		339,678.67
562 Tuition To Pennsylvania Charter Schools	434,843.66	386,022.93		820,866.59
564 Tuition To Career and Technology Centers		93,248.03		93,248.03
567 Tuition To Approved Private Schools (APS) and PA Chartered Schools for the Deaf and Blind	21,410.05	93,024.28		114,434.33
568 Tuition To Private Residential Rehabilitative Institutions (PRRI) [In-State] and Detention Centers	130,535.07	188,885.60		319,420.67
569 Tuition – Other		35,133.16		35,133.16
580 Travel	649.00	649.00		1,298.00
594 IU Payment By Withholding for Institutionalized Children's Programs – Special Classes	418.59	371.20		789.79
Total Other Purchased Services	\$668,940.43	\$1,056,836.18	\$3,800.00	\$1,729,576.61
600 Supplies				
610 General Supplies	25,499.79	17,106.59	63,170.84	105,777.22
630 Food	183.95	140.95		324.90
Total Supplies	\$25,683.74	\$17,247.54	\$63,170.84	\$106,102.12
700 Property				
752 Capital Equipment – Original and Additional	34.89			34.89
Total Property	\$34.89			\$34.89
Total 1200 Special Programs – Elementary / Secondary	\$4,843,852.13	\$5,932,777.37	\$923,295.64	\$11,699,925.14

LEA : 112676703 Spring Grove Area SD

Printed 11/22/2022 10:49:11 AM

General Fund (10)

1210 Life Skills Support

	<u>Elementary</u>	<u>Secondary</u>	<u>Federal</u>	<u>Total</u>
100 <u>Personnel Services – Salaries</u>				
100 Personnel Services – Salaries	90,684.72	103,655.53		194,340.25
Total Personnel Services – Salaries	\$90,684.72	\$103,655.53		\$194,340.25
200 <u>Personnel Services – Employee Benefits</u>				
210 Group Insurance – Contracted Provider	12.80	7.20		20.00
220 Social Security Contributions	6,676.29	7,202.73		13,879.02
230 PSERS Retirement Contributions	31,685.24	36,217.34		67,902.58
250 Unemployment Compensation	1,425.42	740.86		2,166.28
260 Workers' Compensation	725.50	829.21		1,554.71
270 Group Insurance – Self-Insurance	18,110.25	14,153.70		32,263.95
Total Personnel Services – Employee Benefits	\$58,635.50	\$59,151.04		\$117,786.54
300 <u>Purchased Professional and Technical Services</u>				
322 Professional Educational Services – Ius	197,412.31	269,080.10	117,538.83	584,031.24
Total Purchased Professional and Technical Services	\$197,412.31	\$269,080.10	\$117,538.83	\$584,031.24
500 <u>Other Purchased Services</u>				
561 Tuition To Other School Districts Within the State	8,624.85	237,019.76		245,644.61
Total Other Purchased Services	\$8,624.85	\$237,019.76		\$245,644.61
600 <u>Supplies</u>				
610 General Supplies	8,292.89	7,366.82	10,800.74	26,460.45
Total Supplies	\$8,292.89	\$7,366.82	\$10,800.74	\$26,460.45
Total 1210 Life Skills Support	\$363,650.27	\$676,273.25	\$128,339.57	\$1,168,263.09

LEA : 112676703 Spring Grove Area SD

Printed 11/22/2022 10:49:11 AM

General Fund (10)

1220 Sensory Support	Elementary	Secondary	Federal	Total
100 <u>Personnel Services – Salaries</u>				
100 Personnel Services – Salaries		16,613.96		16,613.96
Total Personnel Services – Salaries		\$16,613.96		\$16,613.96
200 <u>Personnel Services – Employee Benefits</u>				
210 Group Insurance – Contracted Provider	8.80	4.80		13.60
220 Social Security Contributions		1,162.91		1,162.91
230 PSERS Retirement Contributions		5,804.92		5,804.92
250 Unemployment Compensation		548.15		548.15
260 Workers' Compensation		132.87		132.87
270 Group Insurance – Self-Insurance	9,427.62	3,929.58		13,357.20
Total Personnel Services – Employee Benefits	\$9,436.42	\$11,583.23		\$21,019.65
300 <u>Purchased Professional and Technical Services</u>				
322 Professional Educational Services – Ius	278,174.43	71,226.79	478,369.98	827,771.20
Total Purchased Professional and Technical Services	\$278,174.43	\$71,226.79	\$478,369.98	\$827,771.20
500 <u>Other Purchased Services</u>				
561 Tuition To Other School Districts Within the State	23,625.06	20,151.46		43,776.52
Total Other Purchased Services	\$23,625.06	\$20,151.46		\$43,776.52
600 <u>Supplies</u>				
610 General Supplies	2,947.42	1,831.79		4,779.21
Total Supplies	\$2,947.42	\$1,831.79		\$4,779.21
Total 1220 Sensory Support	\$314,183.33	\$121,407.23	\$478,369.98	\$913,960.54

LEA : 112676703 Spring Grove Area SD

Printed 11/22/2022 10:49:11 AM

General Fund (10)				
1230 Emotional Support	Elementary	Secondary	Federal	Total
100 <u>Personnel Services – Salaries</u>				
100 Personnel Services – Salaries	535,265.10	491,228.78		1,026,493.88
Total Personnel Services – Salaries	\$535,265.10	\$491,228.78		\$1,026,493.88
200 <u>Personnel Services – Employee Benefits</u>				
210 Group Insurance – Contracted Provider	152.54	88.40		240.94
220 Social Security Contributions	38,092.85	35,383.97		73,476.82
230 PSERS Retirement Contributions	186,934.17	171,526.24		358,460.41
250 Unemployment Compensation	7,501.48	5,217.73		12,719.21
260 Workers' Compensation	4,282.32	3,929.78		8,212.10
270 Group Insurance – Self-Insurance	294,977.22	223,958.37		518,935.59
Total Personnel Services – Employee Benefits	\$531,940.58	\$440,104.49		\$972,045.07
300 <u>Purchased Professional and Technical Services</u>				
322 Professional Educational Services – Ius	14,353.88	388,125.07	170,556.84	573,035.79
Total Purchased Professional and Technical Services	\$14,353.88	\$388,125.07	\$170,556.84	\$573,035.79
500 <u>Other Purchased Services</u>				
510 Student Transportation Services		760.00		760.00
530 Communications			3,800.00	3,800.00
561 Tuition To Other School Districts Within the State	48,756.04			48,756.04
562 Tuition To Pennsylvania Charter Schools		4,564.28		4,564.28
567 Tuition To Approved Private Schools (APS) and PA Chartered Schools for the Deaf and Blind		74,578.00		74,578.00
568 Tuition To Private Residential Rehabilitative Institutions (PRRI) [In-State] and Detention Centers	97,974.93	130,251.77		228,226.70
569 Tuition – Other		34,544.96		34,544.96
Total Other Purchased Services	\$146,730.97	\$244,699.01	\$3,800.00	\$395,229.98
600 <u>Supplies</u>				
610 General Supplies	6,423.82	3,104.89	10,941.76	20,470.47
630 Food	93.81	83.19		177.00
Total Supplies	\$6,517.63	\$3,188.08	\$10,941.76	\$20,647.47
Total 1230 Emotional Support	\$1,234,808.16	\$1,567,345.43	\$185,298.60	\$2,987,452.19

LEA : 112676703 Spring Grove Area SD

Printed 11/22/2022 10:49:11 AM

General Fund (10)				
1240 Academic Support	<u>Elementary</u>	<u>Secondary</u>	<u>Federal</u>	<u>Total</u>
100 <u>Personnel Services – Salaries</u>				
100 Personnel Services – Salaries	1,349,899.83	1,637,702.52		2,987,602.35
Total Personnel Services – Salaries	\$1,349,899.83	\$1,637,702.52		\$2,987,602.35
200 <u>Personnel Services – Employee Benefits</u>				
210 Group Insurance – Contracted Provider	194.28	190.68		384.96
220 Social Security Contributions	99,241.73	119,769.66		219,011.39
230 PSERS Retirement Contributions	471,524.99	568,525.95		1,040,050.94
250 Unemployment Compensation	11,769.33	11,055.55		22,824.88
260 Workers' Compensation	10,799.25	13,104.51		23,903.76
270 Group Insurance – Self-Insurance	243,033.88	397,887.29		640,921.17
291 Other Retirement Plans	1,096.43	972.30		2,068.73
Total Personnel Services – Employee Benefits	\$837,659.89	\$1,111,505.94		\$1,949,165.83
300 <u>Purchased Professional and Technical Services</u>				
322 Professional Educational Services – Ius	11,399.00	32,875.50		44,274.50
330 Other Professional Services	3,750.00			3,750.00
Total Purchased Professional and Technical Services	\$15,149.00	\$32,875.50		\$48,024.50
500 <u>Other Purchased Services</u>				
549 Other Advertising/Public Relations	78.11	69.26		147.37
562 Tuition To Pennsylvania Charter Schools	434,843.66	381,458.65		816,302.31
564 Tuition To Career and Technology Centers		93,248.03		93,248.03
568 Tuition To Private Residential Rehabilitative Institutions (PRRI) [In-State] and Detention Centers	32,560.14	58,633.83		91,193.97
580 Travel	649.00	649.00		1,298.00
Total Other Purchased Services	\$468,130.91	\$534,058.77		\$1,002,189.68
600 <u>Supplies</u>				
610 General Supplies	7,835.66	4,803.09	41,428.34	54,067.09
630 Food	65.14	57.76		122.90
Total Supplies	\$7,900.80	\$4,860.85	\$41,428.34	\$54,189.99
700 <u>Property</u>				
752 Capital Equipment – Original and Additional	34.89			34.89
Total Property	\$34.89			\$34.89
Total 1240 Academic Support	\$2,678,775.32	\$3,321,003.58	\$41,428.34	\$6,041,207.24

LEA : 112676703 Spring Grove Area SD

Printed 11/22/2022 10:49:11 AM

General Fund (10)

1241 Learning Support – Public	Elementary	Secondary	Federal	Total
100 Personnel Services – Salaries				
100 Personnel Services – Salaries	1,216,510.30	1,367,873.50		2,584,383.80
Total Personnel Services – Salaries	\$1,216,510.30	\$1,367,873.50		\$2,584,383.80
200 Personnel Services – Employee Benefits				
210 Group Insurance – Contracted Provider	190.68	169.08		359.76
220 Social Security Contributions	89,445.49	99,643.44		189,088.93
230 PSERS Retirement Contributions	424,995.42	475,775.19		900,770.61
250 Unemployment Compensation	11,163.52	9,858.30		21,021.82
260 Workers' Compensation	9,732.10	10,946.04		20,678.14
270 Group Insurance – Self-Insurance	233,255.16	359,767.92		593,023.08
291 Other Retirement Plans	1,096.43	972.30		2,068.73
Total Personnel Services – Employee Benefits	\$769,878.80	\$957,132.27		\$1,727,011.07
300 Purchased Professional and Technical Services				
322 Professional Educational Services – Ius	11,399.00	30,361.50		41,760.50
330 Other Professional Services	3,750.00			3,750.00
Total Purchased Professional and Technical Services	\$15,149.00	\$30,361.50		\$45,510.50
500 Other Purchased Services				
549 Other Advertising/Public Relations	78.11	69.26		147.37
562 Tuition To Pennsylvania Charter Schools	434,843.66	381,458.65		816,302.31
564 Tuition To Career and Technology Centers		93,248.03		93,248.03
568 Tuition To Private Residential Rehabilitative Institutions (PRRI) [In-State] and Detention Centers	32,560.14	58,633.83		91,193.97
580 Travel	649.00	649.00		1,298.00
Total Other Purchased Services	\$468,130.91	\$534,058.77		\$1,002,189.68
600 Supplies				
610 General Supplies	7,229.05	4,667.98	41,428.34	53,325.37
630 Food	65.14	57.76		122.90
Total Supplies	\$7,294.19	\$4,725.74	\$41,428.34	\$53,448.27
700 Property				
752 Capital Equipment – Original and Additional	34.89			34.89
Total Property	\$34.89			\$34.89
Total 1241 Learning Support – Public	\$2,476,998.09	\$2,894,151.78	\$41,428.34	\$5,412,578.21

LEA : 112676703 Spring Grove Area SD

Printed 11/22/2022 10:49:11 AM

General Fund (10)

1243 Gifted Support	Elementary	Secondary	Federal	Total
100 <u>Personnel Services – Salaries</u>				
100 Personnel Services – Salaries	133,389.53	269,829.02		403,218.55
Total Personnel Services – Salaries	\$133,389.53	\$269,829.02		\$403,218.55
200 <u>Personnel Services – Employee Benefits</u>				
210 Group Insurance – Contracted Provider	3.60	21.60		25.20
220 Social Security Contributions	9,796.24	20,126.22		29,922.46
230 PSERS Retirement Contributions	46,529.57	92,750.76		139,280.33
250 Unemployment Compensation	605.81	1,197.25		1,803.06
260 Workers' Compensation	1,067.15	2,158.47		3,225.62
270 Group Insurance – Self-Insurance	9,778.72	38,119.37		47,898.09
Total Personnel Services – Employee Benefits	\$67,781.09	\$154,373.67		\$222,154.76
300 <u>Purchased Professional and Technical Services</u>				
322 Professional Educational Services – Ius		2,514.00		2,514.00
Total Purchased Professional and Technical Services		\$2,514.00		\$2,514.00
600 <u>Supplies</u>				
610 General Supplies	606.61	135.11		741.72
Total Supplies	\$606.61	\$135.11		\$741.72
Total 1243 Gifted Support	\$201,777.23	\$426,851.80		\$628,629.03

LEA : 112676703 Spring Grove Area SD

Printed 11/22/2022 10:49:11 AM

General Fund (10)

1260 Physical Support

	<u>Elementary</u>	<u>Secondary</u>	<u>Federal</u>	<u>Total</u>
100 <u>Personnel Services – Salaries</u>				
100 Personnel Services – Salaries		437.50		437.50
Total Personnel Services – Salaries		\$437.50		\$437.50
200 <u>Personnel Services – Employee Benefits</u>				
220 Social Security Contributions		33.47		33.47
230 PSERS Retirement Contributions		152.87		152.87
250 Unemployment Compensation		16.09		16.09
260 Workers' Compensation		3.50		3.50
Total Personnel Services – Employee Benefits		\$205.93		\$205.93
300 <u>Purchased Professional and Technical Services</u>				
322 Professional Educational Services – Ius	135,813.24	12,491.45		148,304.69
Total Purchased Professional and Technical Services	\$135,813.24	\$12,491.45		\$148,304.69
Total 1260 Physical Support	\$135,813.24	\$13,134.88		\$148,948.12

LEA : 112676703 Spring Grove Area SD

Printed 11/22/2022 10:49:11 AM

General Fund (10)

1270 Multi-Handicapped Support	<u>Elementary</u>	<u>Secondary</u>	<u>Federal</u>	<u>Total</u>
300 <u>Purchased Professional and Technical Services</u>				
322 Professional Educational Services – lus	56,890.40	212,705.82	83,391.15	352,987.37
Total Purchased Professional and Technical Services	\$56,890.40	\$212,705.82	\$83,391.15	\$352,987.37
500 <u>Other Purchased Services</u>				
561 Tuition To Other School Districts Within the State		1,501.50		1,501.50
567 Tuition To Approved Private Schools (APS) and PA Chartered Schools for the Deaf and Blind		(540.00)		(540.00)
569 Tuition – Other		588.20		588.20
Total Other Purchased Services		\$1,549.70		\$1,549.70
Total 1270 Multi-Handicapped Support	\$56,890.40	\$214,255.52	\$83,391.15	\$354,537.07

LEA : 112676703 Spring Grove Area SD

Printed 11/22/2022 10:49:11 AM

General Fund (10)

1280 Early Intervention Support	<u>Elementary</u>	<u>Secondary</u>	<u>Federal</u>	<u>Total</u>
300 <u>Purchased Professional and Technical Services</u>				
322 Professional Educational Services – lus	37,877.77		6,468.00	44,345.77
Total Purchased Professional and Technical Services	\$37,877.77		\$6,468.00	\$44,345.77
600 <u>Supplies</u>				
630 Food	25.00			25.00
Total Supplies	\$25.00			\$25.00
Total 1280 Early Intervention Support	\$37,902.77		\$6,468.00	\$44,370.77

LEA : 112676703 Spring Grove Area SD

Printed 11/22/2022 10:49:11 AM

General Fund (10)

1290 Special Programs - Other Support

	<u>Elementary</u>	<u>Secondary</u>	<u>Federal</u>	<u>Total</u>
500 Other Purchased Services				
567 Tuition To Approved Private Schools (APS) and PA Chartered Schools for the Deaf and Blind	21,410.05	18,986.28		40,396.33
594 IU Payment By Withholding for Institutionalized Children's Programs – Special Classes	418.59	371.20		789.79
Total Other Purchased Services	\$21,828.64	\$19,357.48		\$41,186.12
Total 1290 Special Programs - Other Support	\$21,828.64	\$19,357.48		\$41,186.12

LEA : 112676703 Spring Grove Area SD

Printed 11/22/2022 10:49:11 AM

General Fund (10)					
1300 Vocational Education		Elementary	Secondary	Federal	Total
100 <u>Personnel Services – Salaries</u>					
100 Personnel Services – Salaries			95,770.26		95,770.26
Total Personnel Services – Salaries			\$95,770.26		\$95,770.26
200 <u>Personnel Services – Employee Benefits</u>					
210 Group Insurance – Contracted Provider			7.20		7.20
220 Social Security Contributions			7,105.38		7,105.38
230 PSERS Retirement Contributions			32,524.95		32,524.95
250 Unemployment Compensation			742.55		742.55
260 Workers' Compensation			766.14		766.14
270 Group Insurance – Self-Insurance			14,436.49		14,436.49
Total Personnel Services – Employee Benefits			\$55,582.71		\$55,582.71
400 <u>Purchased Property Services</u>					
430 Repairs and Maintenance Services			873.43		873.43
Total Purchased Property Services			\$873.43		\$873.43
500 <u>Other Purchased Services</u>					
510 Student Transportation Services			385.00		385.00
564 Tuition To Career and Technology Centers			1,448,074.59		1,448,074.59
Total Other Purchased Services			\$1,448,459.59		\$1,448,459.59
600 <u>Supplies</u>					
610 General Supplies			5,859.53		5,859.53
630 Food			9,887.54		9,887.54
640 Books and Periodicals			11,649.75		11,649.75
650 Supplies & Fees – Technology Related			4,467.00		4,467.00
Total Supplies			\$31,863.82		\$31,863.82
700 <u>Property</u>					
752 Capital Equipment – Original and Additional			2,381.77		2,381.77
Total Property			\$2,381.77		\$2,381.77
Total 1300 Vocational Education			\$1,634,931.58		\$1,634,931.58

LEA : 112676703 Spring Grove Area SD

Printed 11/22/2022 10:49:11 AM

General Fund (10)

1400 Other Instructional Programs – Elementary / Secondary	<u>Elementary</u>	<u>Secondary</u>	<u>Federal</u>	<u>Total</u>
100 <u>Personnel Services – Salaries</u>				
100 Personnel Services – Salaries	46,896.92	45,377.95	52,671.52	144,946.39
Total Personnel Services – Salaries	\$46,896.92	\$45,377.95	\$52,671.52	\$144,946.39
200 <u>Personnel Services – Employee Benefits</u>				
220 Social Security Contributions	3,564.93	3,471.40	4,017.73	11,054.06
230 PSERS Retirement Contributions	19,028.54	22,069.58	9,201.73	50,299.85
250 Unemployment Compensation	583.34	146.91		730.25
260 Workers' Compensation	375.17	363.04	421.40	1,159.61
Total Personnel Services – Employee Benefits	\$23,551.98	\$26,050.93	\$13,640.86	\$63,243.77
300 <u>Purchased Professional and Technical Services</u>				
329 Professional Educational Services – Other		101,295.79		101,295.79
Total Purchased Professional and Technical Services		\$101,295.79		\$101,295.79
500 <u>Other Purchased Services</u>				
561 Tuition To Other School Districts Within the State	1,333.17	1,182.24		2,515.41
569 Tuition – Other	776.66	6,448.45		7,225.11
Total Other Purchased Services	\$2,109.83	\$7,630.69		\$9,740.52
600 <u>Supplies</u>				
610 General Supplies	1,404.32			1,404.32
Total Supplies	\$1,404.32			\$1,404.32
Total 1400 Other Instructional Programs – Elementary / Secondary	\$73,963.05	\$180,355.36	\$66,312.38	\$320,630.79

LEA : 112676703 Spring Grove Area SD

Printed 11/22/2022 10:49:11 AM

General Fund (10)

1420 Summer School	<u>Elementary</u>	<u>Secondary</u>	<u>Federal</u>	<u>Total</u>
100 <u>Personnel Services – Salaries</u>				
100 Personnel Services – Salaries	44,068.96	45,377.95	52,671.52	142,118.43
Total Personnel Services – Salaries	\$44,068.96	\$45,377.95	\$52,671.52	\$142,118.43
200 <u>Personnel Services – Employee Benefits</u>				
220 Social Security Contributions	3,361.64	3,471.40	4,017.73	10,850.77
230 PSERS Retirement Contributions	18,040.48	22,069.58	9,201.73	49,311.79
250 Unemployment Compensation	569.56	146.91		716.47
260 Workers' Compensation	352.56	363.04	421.40	1,137.00
Total Personnel Services – Employee Benefits	\$22,324.24	\$26,050.93	\$13,640.86	\$62,016.03
600 <u>Supplies</u>				
610 General Supplies	1,404.32			1,404.32
Total Supplies	\$1,404.32			\$1,404.32
Total 1420 Summer School	\$67,797.52	\$71,428.88	\$66,312.38	\$205,538.78

LEA : 112676703 Spring Grove Area SD

Printed 11/22/2022 10:49:11 AM

General Fund (10)

1430 Homebound Instruction	<u>Elementary</u>	<u>Secondary</u>	<u>Federal</u>	<u>Total</u>
100 <u>Personnel Services – Salaries</u>				
100 Personnel Services – Salaries	2,827.96			2,827.96
Total Personnel Services – Salaries	\$2,827.96			\$2,827.96
200 <u>Personnel Services – Employee Benefits</u>				
220 Social Security Contributions	203.29			203.29
230 PSERS Retirement Contributions	988.06			988.06
250 Unemployment Compensation	13.78			13.78
260 Workers' Compensation	22.61			22.61
Total Personnel Services – Employee Benefits	\$1,227.74			\$1,227.74
500 <u>Other Purchased Services</u>				
569 Tuition – Other	776.66	6,448.45		7,225.11
Total Other Purchased Services	\$776.66	\$6,448.45		\$7,225.11
Total 1430 Homebound Instruction	\$4,832.36	\$6,448.45		\$11,280.81

LEA : 112676703 Spring Grove Area SD

Printed 11/22/2022 10:49:11 AM

General Fund (10)

1440 Alternative Regular Education Programs	<u>Elementary</u>	<u>Secondary</u>	<u>Federal</u>	<u>Total</u>
300 <u>Purchased Professional and Technical Services</u>				
329 Professional Educational Services – Other		101,295.79		101,295.79
Total Purchased Professional and Technical Services		\$101,295.79		\$101,295.79
500 <u>Other Purchased Services</u>				
561 Tuition To Other School Districts Within the State	1,333.17	1,182.24		2,515.41
Total Other Purchased Services	\$1,333.17	\$1,182.24		\$2,515.41
Total 1440 Alternative Regular Education Programs	\$1,333.17	\$102,478.03		\$103,811.20

LEA : 112676703 Spring Grove Area SD

Printed 11/22/2022 10:49:11 AM

General Fund (10)				
1441 Adjudicated / Court-Placed Programs	<u>Elementary</u>	<u>Secondary</u>	<u>Federal</u>	<u>Total</u>
500 <u>Other Purchased Services</u>				
561 Tuition To Other School Districts Within the State	1,333.17	1,182.24		2,515.41
Total Other Purchased Services	\$1,333.17	\$1,182.24		\$2,515.41
Total 1441 Adjudicated / Court-Placed Programs	\$1,333.17	\$1,182.24		\$2,515.41

LEA : 112676703 Spring Grove Area SD

Printed 11/22/2022 10:49:11 AM

General Fund (10)

1442 Alternative Education Programs	<u>Elementary</u>	<u>Secondary</u>	<u>Federal</u>	<u>Total</u>
300 <u>Purchased Professional and Technical Services</u>				
329 Professional Educational Services – Other		101,295.79		101,295.79
Total Purchased Professional and Technical Services		\$101,295.79		\$101,295.79
Total 1442 Alternative Education Programs		\$101,295.79		\$101,295.79

LEA : 112676703 Spring Grove Area SD

Printed 11/22/2022 10:49:11 AM

General Fund (10)

1800 Pre-Kindergarten

	<u>Elementary</u>	<u>Secondary</u>	<u>Federal</u>	<u>Total</u>
100 <u>Personnel Services – Salaries</u>				
100 Personnel Services – Salaries			18,096.88	18,096.88
Total Personnel Services – Salaries			\$18,096.88	\$18,096.88
200 <u>Personnel Services – Employee Benefits</u>				
210 Group Insurance – Contracted Provider			1.60	1.60
220 Social Security Contributions			1,382.97	1,382.97
230 PSERS Retirement Contributions			6,161.84	6,161.84
250 Unemployment Compensation			66.62	66.62
260 Workers' Compensation			144.77	144.77
Total Personnel Services – Employee Benefits			\$7,757.80	\$7,757.80
600 <u>Supplies</u>				
610 General Supplies			7,946.77	7,946.77
630 Food			621.35	621.35
Total Supplies			\$8,568.12	\$8,568.12
Total 1800 Pre-Kindergarten			\$34,422.80	\$34,422.80

LEA : 112676703 Spring Grove Area SD

Printed 11/22/2022 10:49:11 AM

General Fund (10)

1801 Pre-K Instruction

	<u>Elementary</u>	<u>Secondary</u>	<u>Federal</u>	<u>Total</u>
100 <u>Personnel Services – Salaries</u>				
100 Personnel Services – Salaries			18,096.88	18,096.88
Total Personnel Services – Salaries			\$18,096.88	\$18,096.88
200 <u>Personnel Services – Employee Benefits</u>				
210 Group Insurance – Contracted Provider			1.60	1.60
220 Social Security Contributions			1,382.97	1,382.97
230 PSERS Retirement Contributions			6,161.84	6,161.84
250 Unemployment Compensation			66.62	66.62
260 Workers' Compensation			144.77	144.77
Total Personnel Services – Employee Benefits			\$7,757.80	\$7,757.80
600 <u>Supplies</u>				
610 General Supplies			7,946.77	7,946.77
630 Food			621.35	621.35
Total Supplies			\$8,568.12	\$8,568.12
Total 1801 Pre-K Instruction			\$34,422.80	\$34,422.80

LEA : 112676703 Spring Grove Area SD

Printed 11/22/2022 10:49:18 AM

General Fund (10)

2000 Support Services

Total

100	<u>Personnel Services – Salaries</u>	
100	Personnel Services – Salaries	8,342,031.49
Total Personnel Services – Salaries		\$8,342,031.49
200	<u>Personnel Services – Employee Benefits</u>	
210	Group Insurance – Contracted Provider	981.76
220	Social Security Contributions	613,166.85
230	PSERS Retirement Contributions	2,782,685.77
240	Tuition Reimbursement	293,826.30
250	Unemployment Compensation	64,889.76
260	Workers' Compensation	(33,976.06)
270	Group Insurance – Self-Insurance	1,601,292.07
291	Other Retirement Plans	23,406.80
Total Personnel Services – Employee Benefits		\$5,346,273.25
300	<u>Purchased Professional and Technical Services</u>	
310	Official / Administrative Services	101,630.70
322	Professional Educational Services – Ius	7,982.00
330	Other Professional Services	191,475.30
340	Technical Services	1,029,976.59
350	Security / Safety Services	302.05
360	Employee Training and Development Services	28,691.00
390	Other Purchased Professional and Technical Services	36,076.85
Total Purchased Professional and Technical Services		\$1,396,134.49
400	<u>Purchased Property Services</u>	
410	Cleaning Services	134,992.51
420	Utility Services	1,058,768.58
430	Repairs and Maintenance Services	1,949,854.07
440	Rentals	37,810.50
460	Extermination Services	7,874.86
Total Purchased Property Services		\$3,189,300.52
500	<u>Other Purchased Services</u>	
510	Student Transportation Services	2,725.74
513	Contracted Carriers	4,625,457.12
516	Student Transportation Services From the IU	209,312.04
520	Insurance – General	23,162.00
521	Fire Insurance	11,952.00
522	Automotive Liability Insurance	12,342.00
523	General Property and Liability Insurance	36,148.00
529	Other Insurance	200,864.00
530	Communications	178,486.65
549	Other Advertising/Public Relations	882.88
550	Printing and Binding	7,430.92
580	Travel	47,287.15
595	IU Payments By Withholding	5,872.84
Total Other Purchased Services		\$5,361,923.34

LEA : 112676703 Spring Grove Area SD

Printed 11/22/2022 10:49:18 AM

General Fund (10)	
2000 Support Services	<u>Total</u>
600 <u>Supplies</u>	
610 General Supplies	523,080.70
620 Energy	778,296.12
630 Food	31,894.26
640 Books and Periodicals	121,010.10
650 Supplies & Fees – Technology Related	628,144.13
Total Supplies	\$2,082,425.31
700 <u>Property</u>	
752 Capital Equipment – Original and Additional	81,357.43
756 Capitalized Technology Equipment– Original	650,978.18
758 Capitalized Technology Software - Original	71,015.79
762 Capitalized Equipment - Replacement	82,535.36
766 Capitalized Technology Equipment– Replacement	65,328.62
768 Capitalized Technology Software - Replacement	212,469.15
Total Property	\$1,163,684.53
800 <u>Other Objects</u>	
810 Dues and Fees	134,853.33
Total Other Objects	\$134,853.33
Total 2000 Support Services	\$27,016,626.26

LEA : 112676703 Spring Grove Area SD

Printed 11/22/2022 10:49:18 AM

General Fund (10)

2100 Support Services – Students	Elementary	Secondary	Federal	Total
100 <u>Personnel Services – Salaries</u>				
100 Personnel Services – Salaries	626,184.60	759,685.31		1,577,966.79
Total Personnel Services – Salaries	\$626,184.60	\$759,685.31		\$1,577,966.79
200 <u>Personnel Services – Employee Benefits</u>				
210 Group Insurance – Contracted Provider	54.32	94.00		177.12
220 Social Security Contributions	45,789.79	56,107.62		120,554.47
230 PSERS Retirement Contributions	218,291.78	264,993.31		571,288.30
250 Unemployment Compensation	3,175.69	5,111.82		9,779.72
260 Workers' Compensation	5,009.29	6,077.10		13,101.52
270 Group Insurance – Self-Insurance	100,864.31	116,444.99		283,521.62
Total Personnel Services – Employee Benefits	\$373,185.18	\$448,828.84		\$998,422.75
300 <u>Purchased Professional and Technical Services</u>				
322 Professional Educational Services – Ius	5,287.96	2,694.04		7,982.00
330 Other Professional Services	34,525.01	29,144.84	14,070.00	77,739.85
340 Technical Services			5,212.50	5,212.50
Total Purchased Professional and Technical Services	\$39,812.97	\$31,838.88	\$19,282.50	\$90,934.35
400 <u>Purchased Property Services</u>				
430 Repairs and Maintenance Services		416.91		416.91
Total Purchased Property Services		\$416.91		\$416.91
500 <u>Other Purchased Services</u>				
510 Student Transportation Services	369.00	974.22	1,382.52	2,725.74
550 Printing and Binding	488.00			488.00
580 Travel	331.46	3,011.16	250.00	3,994.85
Total Other Purchased Services	\$1,188.46	\$3,985.38	\$1,632.52	\$7,208.59
600 <u>Supplies</u>				
610 General Supplies	7,317.61	5,141.43	5,994.92	18,860.41
630 Food	522.41	951.70		1,502.27
640 Books and Periodicals		100.00		100.00
650 Supplies & Fees – Technology Related	6,305.60	13,968.95		20,274.55
Total Supplies	\$14,145.62	\$20,162.08	\$5,994.92	\$40,737.23
700 <u>Property</u>				
752 Capital Equipment – Original and Additional		591.72		591.72
Total Property		\$591.72		\$591.72
800 <u>Other Objects</u>				
810 Dues and Fees	313.73	2,911.22		3,224.95
Total Other Objects	\$313.73	\$2,911.22		\$3,224.95
Total 2100 Support Services – Students	\$1,054,830.56	\$1,268,420.34	\$26,909.94	\$2,719,503.29

LEA : 112676703 Spring Grove Area SD

Printed 11/22/2022 10:49:18 AM

General Fund (10)

2110 Supervision of Student Services	Elementary	Secondary	Federal	Total
100 <u>Personnel Services – Salaries</u>				
100 Personnel Services – Salaries	69,701.48	61,810.74		131,512.22
Total Personnel Services – Salaries	\$69,701.48	\$61,810.74		\$131,512.22
200 <u>Personnel Services – Employee Benefits</u>				
210 Group Insurance – Contracted Provider	6.87	6.09		12.96
220 Social Security Contributions	5,170.91	4,585.53		9,756.44
230 PSERS Retirement Contributions	23,856.60	21,155.86		45,012.46
250 Unemployment Compensation	374.09	331.74		705.83
260 Workers' Compensation	557.60	494.48		1,052.08
270 Group Insurance – Self-Insurance	11,106.01	9,848.73		20,954.74
Total Personnel Services – Employee Benefits	\$41,072.08	\$36,422.43		\$77,494.51
300 <u>Purchased Professional and Technical Services</u>				
322 Professional Educational Services – Ius	5,287.96	2,694.04		7,982.00
330 Other Professional Services	5,737.48	3,116.28		8,853.76
Total Purchased Professional and Technical Services	\$11,025.44	\$5,810.32		\$16,835.76
500 <u>Other Purchased Services</u>				
510 Student Transportation Services	369.00		1,382.52	1,751.52
550 Printing and Binding	488.00			488.00
580 Travel	253.45	2,740.99		2,994.44
Total Other Purchased Services	\$1,110.45	\$2,740.99	\$1,382.52	\$5,233.96
600 <u>Supplies</u>				
610 General Supplies	3,484.82	3,113.52	5,731.18	12,329.52
630 Food	522.41	419.55		941.96
Total Supplies	\$4,007.23	\$3,533.07	\$5,731.18	\$13,271.48
800 <u>Other Objects</u>				
810 Dues and Fees	313.73	278.22		591.95
Total Other Objects	\$313.73	\$278.22		\$591.95
Total 2110 Supervision of Student Services	\$127,230.41	\$110,595.77	\$7,113.70	\$244,939.88

LEA : 112676703 Spring Grove Area SD

Printed 11/22/2022 10:49:18 AM

General Fund (10)

2111 Supervision of Student Services – Head of Component	Elementary	Secondary	Federal	Total
100 <u>Personnel Services – Salaries</u>				
100 Personnel Services – Salaries	69,701.48	61,810.74		131,512.22
Total Personnel Services – Salaries	\$69,701.48	\$61,810.74		\$131,512.22
200 <u>Personnel Services – Employee Benefits</u>				
210 Group Insurance – Contracted Provider	6.87	6.09		12.96
220 Social Security Contributions	5,170.91	4,585.53		9,756.44
230 PSERS Retirement Contributions	23,856.60	21,155.86		45,012.46
250 Unemployment Compensation	374.09	331.74		705.83
260 Workers' Compensation	557.60	494.48		1,052.08
270 Group Insurance – Self-Insurance	11,106.01	9,848.73		20,954.74
Total Personnel Services – Employee Benefits	\$41,072.08	\$36,422.43		\$77,494.51
300 <u>Purchased Professional and Technical Services</u>				
322 Professional Educational Services – Ius	5,287.96	2,694.04		7,982.00
330 Other Professional Services	5,737.48	3,116.28		8,853.76
Total Purchased Professional and Technical Services	\$11,025.44	\$5,810.32		\$16,835.76
500 <u>Other Purchased Services</u>				
510 Student Transportation Services	369.00		1,382.52	1,751.52
550 Printing and Binding	488.00			488.00
580 Travel	253.45	2,740.99		2,994.44
Total Other Purchased Services	\$1,110.45	\$2,740.99	\$1,382.52	\$5,233.96
600 <u>Supplies</u>				
610 General Supplies	3,484.82	3,113.52	5,731.18	12,329.52
630 Food	522.41	419.55		941.96
Total Supplies	\$4,007.23	\$3,533.07	\$5,731.18	\$13,271.48
800 <u>Other Objects</u>				
810 Dues and Fees	313.73	278.22		591.95
Total Other Objects	\$313.73	\$278.22		\$591.95
Total 2111 Supervision of Student Services – Head of Component	\$127,230.41	\$110,595.77	\$7,113.70	\$244,939.88

LEA : 112676703 Spring Grove Area SD

Printed 11/22/2022 10:49:18 AM

General Fund (10)

2120 Guidance Services	Elementary	Secondary	Federal	Total
100 <u>Personnel Services – Salaries</u>				
100 Personnel Services – Salaries	412,828.48	570,041.35		982,869.83
Total Personnel Services – Salaries	\$412,828.48	\$570,041.35		\$982,869.83
200 <u>Personnel Services – Employee Benefits</u>				
210 Group Insurance – Contracted Provider	36.00	77.76		113.76
220 Social Security Contributions	30,273.30	42,315.18		72,588.48
230 PSERS Retirement Contributions	144,242.32	199,172.58		343,414.90
250 Unemployment Compensation	2,206.78	4,271.53		6,478.31
260 Workers' Compensation	3,302.51	4,560.00		7,862.51
270 Group Insurance – Self-Insurance	70,066.37	89,133.60		159,199.97
Total Personnel Services – Employee Benefits	\$250,127.28	\$339,530.65		\$589,657.93
400 <u>Purchased Property Services</u>				
430 Repairs and Maintenance Services		416.91		416.91
Total Purchased Property Services		\$416.91		\$416.91
500 <u>Other Purchased Services</u>				
510 Student Transportation Services		974.22		974.22
580 Travel		201.00	250.00	451.00
Total Other Purchased Services		\$1,175.22	\$250.00	\$1,425.22
600 <u>Supplies</u>				
610 General Supplies	3,724.35	1,931.75		5,656.10
630 Food		532.15		532.15
640 Books and Periodicals		100.00		100.00
650 Supplies & Fees – Technology Related	6,305.60	13,968.95		20,274.55
Total Supplies	\$10,029.95	\$16,532.85		\$26,562.80
700 <u>Property</u>				
752 Capital Equipment – Original and Additional		591.72		591.72
Total Property		\$591.72		\$591.72
800 <u>Other Objects</u>				
810 Dues and Fees		2,633.00		2,633.00
Total Other Objects		\$2,633.00		\$2,633.00
Total 2120 Guidance Services	\$672,985.71	\$930,921.70	\$250.00	\$1,604,157.41

LEA : 112676703 Spring Grove Area SD

Printed 11/22/2022 10:49:18 AM

General Fund (10)

2130 Attendance Services

	<u>Elementary</u>	<u>Secondary</u>	<u>Federal</u>	<u>Total</u>
100 <u>Personnel Services – Salaries</u>				
100 Personnel Services – Salaries				98,101.34
Total Personnel Services – Salaries				\$98,101.34
200 <u>Personnel Services – Employee Benefits</u>				
210 Group Insurance – Contracted Provider				14.40
220 Social Security Contributions				7,090.03
230 PSERS Retirement Contributions				34,276.63
250 Unemployment Compensation				756.61
260 Workers' Compensation				784.84
270 Group Insurance – Self-Insurance				31,707.10
Total Personnel Services – Employee Benefits				\$74,629.61
600 <u>Supplies</u>				
610 General Supplies			95.12	95.12
Total Supplies			\$95.12	\$95.12
Total 2130 Attendance Services			\$95.12	\$172,826.07

LEA : 112676703 Spring Grove Area SD

Printed 11/22/2022 10:49:18 AM

General Fund (10)

2140 Psychological Services	Elementary	Secondary	Federal	Total
100 Personnel Services – Salaries				
100 Personnel Services – Salaries	143,654.64	127,833.22		271,487.86
Total Personnel Services – Salaries	\$143,654.64	\$127,833.22		\$271,487.86
200 Personnel Services – Employee Benefits				
210 Group Insurance – Contracted Provider	11.45	10.15		21.60
220 Social Security Contributions	10,345.58	9,206.91		19,552.49
230 PSERS Retirement Contributions	50,192.86	44,664.87		94,857.73
250 Unemployment Compensation	594.82	508.55		1,103.37
260 Workers' Compensation	1,149.18	1,022.62		2,171.80
270 Group Insurance – Self-Insurance	19,691.93	17,462.66		37,154.59
Total Personnel Services – Employee Benefits	\$81,985.82	\$72,875.76		\$154,861.58
300 Purchased Professional and Technical Services				
330 Other Professional Services	28,787.53	26,028.56	14,070.00	68,886.09
340 Technical Services			5,212.50	5,212.50
Total Purchased Professional and Technical Services	\$28,787.53	\$26,028.56	\$19,282.50	\$74,098.59
500 Other Purchased Services				
580 Travel	78.01	69.17		147.18
Total Other Purchased Services	\$78.01	\$69.17		\$147.18
600 Supplies				
610 General Supplies	108.44	96.16	91.50	296.10
Total Supplies	\$108.44	\$96.16	\$91.50	\$296.10
Total 2140 Psychological Services	\$254,614.44	\$226,902.87	\$19,374.00	\$500,891.31

LEA : 112676703 Spring Grove Area SD

Printed 11/22/2022 10:49:18 AM

General Fund (10)

2160 Social Work Services

	<u>Elementary</u>	<u>Secondary</u>	<u>Federal</u>	<u>Total</u>
100 <u>Personnel Services – Salaries</u>				
100 Personnel Services – Salaries				93,995.54
Total Personnel Services – Salaries				\$93,995.54
200 <u>Personnel Services – Employee Benefits</u>				
210 Group Insurance – Contracted Provider				14.40
220 Social Security Contributions				11,567.03
230 PSERS Retirement Contributions				53,726.58
250 Unemployment Compensation				735.60
260 Workers' Compensation				1,230.29
270 Group Insurance – Self-Insurance				34,505.22
Total Personnel Services – Employee Benefits				
500 <u>Other Purchased Services</u>				
580 Travel				402.23
				\$402.23
600 <u>Supplies</u>				
610 General Supplies			77.12	483.57
630 Food				28.16
Total Supplies			\$77.12	\$511.73
Total 2160 Social Work Services			\$77.12	\$196,688.62

LEA : 112676703 Spring Grove Area SD

Printed 11/22/2022 10:49:18 AM

General Fund (10)

2200 Support Services – Instructional Staff	Elementary	Secondary	Federal	Total
100 <u>Personnel Services – Salaries</u>				
100 Personnel Services – Salaries	977,857.25	713,968.41	4,386.47	1,696,212.13
Total Personnel Services – Salaries	\$977,857.25	\$713,968.41	\$4,386.47	\$1,696,212.13
200 <u>Personnel Services – Employee Benefits</u>				
210 Group Insurance – Contracted Provider	83.65	78.27		161.92
220 Social Security Contributions	71,470.59	51,511.84	325.96	123,308.39
230 PSERS Retirement Contributions	337,710.88	242,116.53	766.32	580,593.73
240 Tuition Reimbursement	94,314.05	137,216.25		231,530.30
250 Unemployment Compensation	4,902.60	3,780.58		8,683.18
260 Workers' Compensation	7,822.60	5,711.74	35.08	13,569.42
270 Group Insurance – Self-Insurance	141,563.45	137,596.39		279,159.84
291 Other Retirement Plans	4,025.82	3,570.06		7,595.88
Total Personnel Services – Employee Benefits	\$661,893.64	\$581,581.66	\$1,127.36	\$1,244,602.66
300 <u>Purchased Professional and Technical Services</u>				
340 Technical Services	156,412.39	129,379.62	9,190.00	294,982.01
360 Employee Training and Development Services	18,575.00	6,000.00	4,116.00	28,691.00
390 Other Purchased Professional and Technical Services	5,357.77	4,751.23		10,109.00
Total Purchased Professional and Technical Services	\$180,345.16	\$140,130.85	\$13,306.00	\$333,782.01
400 <u>Purchased Property Services</u>				
430 Repairs and Maintenance Services	262,930.26	256,059.31		518,989.57
440 Rentals	7,428.39	6,077.79		13,506.18
Total Purchased Property Services	\$270,358.65	\$262,137.10		\$532,495.75
500 <u>Other Purchased Services</u>				
530 Communications	9,076.15	7,425.88		16,502.03
550 Printing and Binding	118.29			118.29
580 Travel	10,851.36	7,505.50	4,412.00	22,768.86
Total Other Purchased Services	\$20,045.80	\$14,931.38	\$4,412.00	\$39,389.18
600 <u>Supplies</u>				
610 General Supplies	3,859.63	36,513.12	744.00	41,116.75
630 Food	2,833.62	14,090.61		16,924.23
640 Books and Periodicals	77,707.95	39,824.89		117,532.84
650 Supplies & Fees – Technology Related	264,080.62	224,989.01	97,207.52	586,277.15
Total Supplies	\$348,481.82	\$315,417.63	\$97,951.52	\$761,850.97
700 <u>Property</u>				
756 Capitalized Technology Equipment – Original	231,134.34	195,162.83	224,681.01	650,978.18
758 Capitalized Technology Software - Original	39,058.68	31,957.11		71,015.79
766 Capitalized Technology Equipment – Replacement	29,778.13	35,550.49		65,328.62
768 Capitalized Technology Software - Replacement	78,376.51	64,130.19	69,962.45	212,469.15
Total Property	\$378,347.66	\$326,800.62	\$294,643.46	\$999,791.74
800 <u>Other Objects</u>				
810 Dues and Fees	2,919.77	2,589.23		5,509.00

LEA : 112676703 Spring Grove Area SD

Printed 11/22/2022 10:49:18 AM

General Fund (10)

2200 Support Services – Instructional Staff

	<u>Elementary</u>	<u>Secondary</u>	<u>Federal</u>	<u>Total</u>
Total Other Objects	\$2,919.77	\$2,589.23		\$5,509.00
Total 2200 Support Services – Instructional Staff	\$2,840,249.75	\$2,357,556.88	\$415,826.81	\$5,613,633.44

LEA : 112676703 Spring Grove Area SD

Printed 11/22/2022 10:49:18 AM

General Fund (10)

2220 Technology Support Services	<u>Elementary</u>	<u>Secondary</u>	<u>Federal</u>	<u>Total</u>
100 <u>Personnel Services – Salaries</u>				
100 Personnel Services – Salaries		1,199.25		1,199.25
Total Personnel Services – Salaries		\$1,199.25		\$1,199.25
200 <u>Personnel Services – Employee Benefits</u>				
220 Social Security Contributions		91.72		91.72
230 PSERS Retirement Contributions		234.23		234.23
250 Unemployment Compensation		42.29		42.29
260 Workers' Compensation		9.57		9.57
Total Personnel Services – Employee Benefits		\$377.81		\$377.81
600 <u>Supplies</u>				
650 Supplies & Fees – Technology Related	828.88	962.79		1,791.67
Total Supplies	\$828.88	\$962.79		\$1,791.67
Total 2220 Technology Support Services	\$828.88	\$2,539.85		\$3,368.73

LEA : 112676703 Spring Grove Area SD

Printed 11/22/2022 10:49:18 AM

General Fund (10)

2240 Computer-Assisted Instruction Support Services

	Elementary	Secondary	Federal	Total
100 <u>Personnel Services – Salaries</u>				
100 Personnel Services – Salaries	435,040.15	405,900.34	4,386.47	845,326.96
Total Personnel Services – Salaries	\$435,040.15	\$405,900.34	\$4,386.47	\$845,326.96
200 <u>Personnel Services – Employee Benefits</u>				
210 Group Insurance – Contracted Provider	31.29	34.95		66.24
220 Social Security Contributions	32,166.18	29,884.75	325.96	62,376.89
230 PSERS Retirement Contributions	151,346.55	141,142.07	766.32	293,254.94
250 Unemployment Compensation	2,012.34	1,869.62		3,881.96
260 Workers' Compensation	3,480.08	3,247.15	35.08	6,762.31
270 Group Insurance – Self-Insurance	70,237.60	84,935.53		155,173.13
291 Other Retirement Plans	2,004.38	1,777.47		3,781.85
Total Personnel Services – Employee Benefits	\$261,278.42	\$262,891.54	\$1,127.36	\$525,297.32
300 <u>Purchased Professional and Technical Services</u>				
340 Technical Services	149,237.91	128,338.10	9,190.00	286,766.01
Total Purchased Professional and Technical Services	\$149,237.91	\$128,338.10	\$9,190.00	\$286,766.01
400 <u>Purchased Property Services</u>				
430 Repairs and Maintenance Services	262,930.26	255,674.31		518,604.57
440 Rentals	7,428.39	6,077.79		13,506.18
Total Purchased Property Services	\$270,358.65	\$261,752.10		\$532,110.75
500 <u>Other Purchased Services</u>				
530 Communications	9,076.15	7,425.88		16,502.03
580 Travel	3,311.87	2,960.05		6,271.92
Total Other Purchased Services	\$12,388.02	\$10,385.93		\$22,773.95
600 <u>Supplies</u>				
610 General Supplies	26.48	21.66	744.00	792.14
630 Food	422.29	374.48		796.77
640 Books and Periodicals	35,902.77	31,838.30		67,741.07
650 Supplies & Fees – Technology Related	263,251.74	218,670.88	97,207.52	579,130.14
Total Supplies	\$299,603.28	\$250,905.32	\$97,951.52	\$648,460.12
700 <u>Property</u>				
756 Capitalized Technology Equipment – Original	231,134.34	195,162.83	224,681.01	650,978.18
758 Capitalized Technology Software - Original	39,058.68	31,957.11		71,015.79
766 Capitalized Technology Equipment – Replacement	29,778.13	35,550.49		65,328.62
768 Capitalized Technology Software - Replacement	78,376.51	64,130.19	69,962.45	212,469.15
Total Property	\$378,347.66	\$326,800.62	\$294,643.46	\$999,791.74
800 <u>Other Objects</u>				
810 Dues and Fees	34.45	30.55		65.00
Total Other Objects	\$34.45	\$30.55		\$65.00
Total 2240 Computer-Assisted Instruction Support Services	\$1,806,288.54	\$1,647,004.50	\$407,298.81	\$3,860,591.85

LEA : 112676703 Spring Grove Area SD

Printed 11/22/2022 10:49:18 AM

General Fund (10)				
2250 School Library Services	<u>Elementary</u>	<u>Secondary</u>	<u>Federal</u>	<u>Total</u>
100 <u>Personnel Services – Salaries</u>				
100 Personnel Services – Salaries	318,447.93	117,531.95		435,979.88
Total Personnel Services – Salaries	\$318,447.93	\$117,531.95		\$435,979.88
200 <u>Personnel Services – Employee Benefits</u>				
210 Group Insurance – Contracted Provider	43.20	35.20		78.40
220 Social Security Contributions	22,901.88	7,689.65		30,591.53
230 PSERS Retirement Contributions	111,108.44	37,369.37		148,477.81
250 Unemployment Compensation	2,339.84	1,370.26		3,710.10
260 Workers' Compensation	2,547.42	940.27		3,487.69
270 Group Insurance – Self-Insurance	49,323.89	33,149.70		82,473.59
Total Personnel Services – Employee Benefits	\$188,264.67	\$80,554.45		\$268,819.12
400 <u>Purchased Property Services</u>				
430 Repairs and Maintenance Services		385.00		385.00
Total Purchased Property Services		\$385.00		\$385.00
500 <u>Other Purchased Services</u>				
550 Printing and Binding	118.29			118.29
Total Other Purchased Services	\$118.29			\$118.29
600 <u>Supplies</u>				
610 General Supplies	972.40	18,542.68		19,515.08
630 Food		11,577.79		11,577.79
640 Books and Periodicals	41,942.98	3,993.79		45,936.77
650 Supplies & Fees – Technology Related		5,355.34		5,355.34
Total Supplies	\$42,915.38	\$39,469.60		\$82,384.98
Total 2250 School Library Services	\$549,746.27	\$237,941.00		\$787,687.27

LEA : 112676703 Spring Grove Area SD

Printed 11/22/2022 10:49:18 AM

General Fund (10)

2260 Instruction and Curriculum Development Services	<u>Elementary</u>	<u>Secondary</u>	<u>Federal</u>	<u>Total</u>
100 <u>Personnel Services – Salaries</u>				
100 Personnel Services – Salaries	195,738.29	168,261.30		363,999.59
Total Personnel Services – Salaries	\$195,738.29	\$168,261.30		\$363,999.59
200 <u>Personnel Services – Employee Benefits</u>				
210 Group Insurance – Contracted Provider	9.16	8.12		17.28
220 Social Security Contributions	14,266.98	12,258.02		26,525.00
230 PSERS Retirement Contributions	65,252.19	56,007.03		121,259.22
250 Unemployment Compensation	550.42	498.41		1,048.83
260 Workers' Compensation	1,566.05	1,346.15		2,912.20
270 Group Insurance – Self-Insurance	22,001.96	19,511.16		41,513.12
291 Other Retirement Plans	2,021.44	1,792.59		3,814.03
Total Personnel Services – Employee Benefits	\$105,668.20	\$91,421.48		\$197,089.68
300 <u>Purchased Professional and Technical Services</u>				
340 Technical Services	6,000.00			6,000.00
Total Purchased Professional and Technical Services	\$6,000.00			\$6,000.00
500 <u>Other Purchased Services</u>				
580 Travel	86.04	76.30		162.34
Total Other Purchased Services	\$86.04	\$76.30		\$162.34
600 <u>Supplies</u>				
610 General Supplies	278.52	17,166.42		17,444.94
630 Food	172.31	152.80		325.11
640 Books and Periodicals		4,115.00		4,115.00
Total Supplies	\$450.83	\$21,434.22		\$21,885.05
800 <u>Other Objects</u>				
810 Dues and Fees	1,590.00	1,410.00		3,000.00
Total Other Objects	\$1,590.00	\$1,410.00		\$3,000.00
Total 2260 Instruction and Curriculum Development Services	\$309,533.36	\$282,603.30		\$592,136.66

LEA : 112676703 Spring Grove Area SD

Printed 11/22/2022 10:49:18 AM

General Fund (10)

2270 Instructional Staff Professional Development Services	Elementary	Secondary	Federal	Total
100 <u>Personnel Services – Salaries</u>				
100 Personnel Services – Salaries	28,630.88	21,075.57		49,706.45
Total Personnel Services – Salaries	\$28,630.88	\$21,075.57		\$49,706.45
200 <u>Personnel Services – Employee Benefits</u>				
220 Social Security Contributions	2,135.55	1,587.70		3,723.25
230 PSERS Retirement Contributions	10,003.70	7,363.83		17,367.53
240 Tuition Reimbursement	94,314.05	137,216.25		231,530.30
260 Workers' Compensation	229.05	168.60		397.65
Total Personnel Services – Employee Benefits	\$106,682.35	\$146,336.38		\$253,018.73
300 <u>Purchased Professional and Technical Services</u>				
340 Technical Services	1,174.48	1,041.52		2,216.00
360 Employee Training and Development Services	18,575.00	6,000.00		24,575.00
390 Other Purchased Professional and Technical Services	5,357.77	4,751.23		10,109.00
Total Purchased Professional and Technical Services	\$25,107.25	\$11,792.75		\$36,900.00
500 <u>Other Purchased Services</u>				
580 Travel	7,453.45	4,469.15	4,412.00	16,334.60
Total Other Purchased Services	\$7,453.45	\$4,469.15	\$4,412.00	\$16,334.60
600 <u>Supplies</u>				
610 General Supplies	2,582.23	782.36		3,364.59
630 Food	2,239.02	1,985.54		4,224.56
640 Books and Periodicals	(137.80)	(122.20)		(260.00)
Total Supplies	\$4,683.45	\$2,645.70		\$7,329.15
800 <u>Other Objects</u>				
810 Dues and Fees	1,295.32	1,148.68		2,444.00
Total Other Objects	\$1,295.32	\$1,148.68		\$2,444.00
Total 2270 Instructional Staff Professional Development Services	\$173,852.70	\$187,468.23	\$4,412.00	\$365,732.93

LEA : 112676703 Spring Grove Area SD

Printed 11/22/2022 10:49:18 AM

General Fund (10)

2280 Nonpublic Support Services

	<u>Elementary</u>	<u>Secondary</u>	<u>Federal</u>	<u>Total</u>
300 <u>Purchased Professional and Technical Services</u>				
360 Employee Training and Development Services			4,116.00	4,116.00
Total Purchased Professional and Technical Services			\$4,116.00	\$4,116.00
Total 2280 Nonpublic Support Services			\$4,116.00	\$4,116.00

LEA : 112676703 Spring Grove Area SD

Printed 11/22/2022 10:49:18 AM

General Fund (10)

2300 Support Services – Administration

	Elementary	Secondary	Federal	Total
100 Personnel Services – Salaries				
100 Personnel Services – Salaries	1,006,458.67	717,815.58	317,679.41	2,364,433.59
Total Personnel Services – Salaries	\$1,006,458.67	\$717,815.58	\$317,679.41	\$2,364,433.59
200 Personnel Services – Employee Benefits				
210 Group Insurance – Contracted Provider	116.00	64.80		203.12
220 Social Security Contributions	73,906.95	51,784.81	23,815.84	171,394.56
230 PSERS Retirement Contributions	331,764.41	248,750.40		683,072.09
250 Unemployment Compensation	6,221.13	3,024.29	6,165.42	16,514.79
260 Workers' Compensation	8,051.82	5,742.64	2,541.43	18,709.86
270 Group Insurance – Self-Insurance	208,620.72	148,833.49		409,023.83
291 Other Retirement Plans	4,476.42	4,382.40		10,577.48
Total Personnel Services – Employee Benefits	\$633,157.45	\$462,582.83	\$32,522.69	\$1,309,495.73
300 Purchased Professional and Technical Services				
310 Official / Administrative Services				101,630.70
330 Other Professional Services				99,755.90
340 Technical Services		838.55		1,074.55
390 Other Purchased Professional and Technical Services				25,967.85
Total Purchased Professional and Technical Services		\$838.55		\$228,429.00
400 Purchased Property Services				
430 Repairs and Maintenance Services	7,388.43	625.64	12,400.00	20,414.07
440 Rentals	3,371.08	893.32		4,264.40
Total Purchased Property Services	\$10,759.51	\$1,518.96	\$12,400.00	\$24,678.47
500 Other Purchased Services				
520 Insurance – General				23,162.00
530 Communications	61.08	54.17		7,363.80
549 Other Advertising/Public Relations				882.88
550 Printing and Binding	15.00			2,242.63
580 Travel	700.82	333.86		2,480.28
Total Other Purchased Services	\$776.90	\$388.03		\$36,131.59
600 Supplies				
610 General Supplies	9,279.40	4,625.76		16,989.03
630 Food	929.27	8,108.39		10,600.47
640 Books and Periodicals	1,533.51			3,102.86
650 Supplies & Fees – Technology Related	2,545.20	695.23		3,240.43
Total Supplies	\$14,287.38	\$13,429.38		\$33,932.79
700 Property				
752 Capital Equipment – Original and Additional		159.95		159.95
762 Capitalized Equipment - Replacement	4,682.36	2,499.95		7,182.31
Total Property	\$4,682.36	\$2,659.90		\$7,342.26
800 Other Objects				
810 Dues and Fees	3,950.00	2,293.00		14,915.64

LEA : 112676703 Spring Grove Area SD

Printed 11/22/2022 10:49:18 AM

General Fund (10)

2300 Support Services – Administration	<u>Elementary</u>	<u>Secondary</u>	<u>Federal</u>	<u>Total</u>
Total Other Objects	\$3,950.00	\$2,293.00		\$14,915.64
Total 2300 Support Services – Administration	\$1,674,072.27	\$1,201,526.23	\$362,602.10	\$4,019,359.07

LEA : 112676703 Spring Grove Area SD

Printed 11/22/2022 10:49:18 AM

General Fund (10)				
2310 Board Services				
	<u>Elementary</u>	<u>Secondary</u>	<u>Federal</u>	<u>Total</u>
100 <u>Personnel Services – Salaries</u>				
100 Personnel Services – Salaries				14,222.00
Total Personnel Services – Salaries				\$14,222.00
200 <u>Personnel Services – Employee Benefits</u>				
210 Group Insurance – Contracted Provider				0.72
220 Social Security Contributions				1,068.16
230 PSERS Retirement Contributions				4,969.12
250 Unemployment Compensation				26.72
260 Workers' Compensation				113.88
270 Group Insurance – Self-Insurance				2,018.07
Total Personnel Services – Employee Benefits				\$8,196.67
300 <u>Purchased Professional and Technical Services</u>				
330 Other Professional Services				12,750.00
390 Other Purchased Professional and Technical Services				12,967.85
Total Purchased Professional and Technical Services				\$25,717.85
500 <u>Other Purchased Services</u>				
520 Insurance – General				605.00
549 Other Advertising/Public Relations				882.88
Total Other Purchased Services				\$1,487.88
600 <u>Supplies</u>				
610 General Supplies				351.75
630 Food				613.65
Total Supplies				\$965.40
800 <u>Other Objects</u>				
810 Dues and Fees				2,480.00
Total Other Objects				\$2,480.00
Total 2310 Board Services				\$53,069.80

LEA : 112676703 Spring Grove Area SD

Printed 11/22/2022 10:49:18 AM

General Fund (10)

2330 Tax Assessment and Collection Services	<u>Elementary</u>	<u>Secondary</u>	<u>Federal</u>	<u>Total</u>
100 <u>Personnel Services – Salaries</u>				
100 Personnel Services – Salaries				63,094.90
Total Personnel Services – Salaries				\$63,094.90
200 <u>Personnel Services – Employee Benefits</u>				
210 Group Insurance – Contracted Provider				7.20
220 Social Security Contributions				4,301.05
230 PSERS Retirement Contributions				13,019.52
250 Unemployment Compensation				364.61
260 Workers' Compensation				298.12
270 Group Insurance – Self-Insurance				19,539.21
Total Personnel Services – Employee Benefits				\$37,529.71
300 <u>Purchased Professional and Technical Services</u>				
310 Official / Administrative Services				101,630.70
330 Other Professional Services				448.37
Total Purchased Professional and Technical Services				\$102,079.07
500 <u>Other Purchased Services</u>				
520 Insurance – General				22,557.00
530 Communications				7,248.55
550 Printing and Binding				2,227.63
Total Other Purchased Services				\$32,033.18
600 <u>Supplies</u>				
610 General Supplies				1,242.82
Total Supplies				\$1,242.82
Total 2330 Tax Assessment and Collection Services				\$235,979.68

LEA : 112676703 Spring Grove Area SD

Printed 11/22/2022 10:49:18 AM

General Fund (10)

2350 Legal and Accounting Services	<u>Elementary</u>	<u>Secondary</u>	<u>Federal</u>	<u>Total</u>
300 <u>Purchased Professional and Technical Services</u>				
330 Other Professional Services				86,557.53
Total Purchased Professional and Technical Services				\$86,557.53
Total 2350 Legal and Accounting Services				\$86,557.53

LEA : 112676703 Spring Grove Area SD

Printed 11/22/2022 10:49:18 AM

General Fund (10)

2360 Office of the Superintendent / Executive Director Services	<u>Elementary</u>	<u>Secondary</u>	<u>Federal</u>	<u>Total</u>
100 <u>Personnel Services – Salaries</u>				
100 Personnel Services – Salaries				245,163.03
Total Personnel Services – Salaries				\$245,163.03
200 <u>Personnel Services – Employee Benefits</u>				
210 Group Insurance – Contracted Provider				14.40
220 Social Security Contributions				16,517.75
230 PSERS Retirement Contributions				84,568.64
250 Unemployment Compensation				712.62
260 Workers' Compensation				1,961.97
270 Group Insurance – Self-Insurance				30,012.34
291 Other Retirement Plans				1,718.66
Total Personnel Services – Employee Benefits				\$135,506.38
300 <u>Purchased Professional and Technical Services</u>				
340 Technical Services				236.00
390 Other Purchased Professional and Technical Services				13,000.00
Total Purchased Professional and Technical Services				\$13,236.00
500 <u>Other Purchased Services</u>				
530 Communications	61.08	54.17		115.25
580 Travel				1,445.60
Total Other Purchased Services	\$61.08	\$54.17		\$1,560.85
600 <u>Supplies</u>				
610 General Supplies				1,362.26
630 Food				949.16
640 Books and Periodicals				1,569.35
Total Supplies				\$3,880.77
800 <u>Other Objects</u>				
810 Dues and Fees				6,192.64
Total Other Objects				\$6,192.64
Total 2360 Office of the Superintendent / Executive Director Services	\$61.08	\$54.17		\$405,539.67

LEA : 112676703 Spring Grove Area SD

Printed 11/22/2022 10:49:18 AM

General Fund (10)

2380 Office of the Principal Services	Elementary	Secondary	Federal	Total
100 <u>Personnel Services – Salaries</u>				
100 Personnel Services – Salaries	1,006,458.67	717,815.58		1,724,274.25
Total Personnel Services – Salaries	\$1,006,458.67	\$717,815.58		\$1,724,274.25
200 <u>Personnel Services – Employee Benefits</u>				
210 Group Insurance – Contracted Provider	116.00	64.80		180.80
220 Social Security Contributions	73,906.95	51,784.81		125,691.76
230 PSERS Retirement Contributions	331,764.41	248,750.40		580,514.81
250 Unemployment Compensation	6,221.13	3,024.29		9,245.42
260 Workers' Compensation	8,051.82	5,742.64		13,794.46
270 Group Insurance – Self-Insurance	208,620.72	148,833.49		357,454.21
291 Other Retirement Plans	4,476.42	4,382.40		8,858.82
Total Personnel Services – Employee Benefits	\$633,157.45	\$462,582.83		\$1,095,740.28
300 <u>Purchased Professional and Technical Services</u>				
340 Technical Services		838.55		838.55
Total Purchased Professional and Technical Services		\$838.55		\$838.55
400 <u>Purchased Property Services</u>				
430 Repairs and Maintenance Services	7,388.43	625.64	12,400.00	20,414.07
440 Rentals	3,371.08	893.32		4,264.40
Total Purchased Property Services	\$10,759.51	\$1,518.96	\$12,400.00	\$24,678.47
500 <u>Other Purchased Services</u>				
550 Printing and Binding	15.00			15.00
580 Travel	700.82	333.86		1,034.68
Total Other Purchased Services	\$715.82	\$333.86		\$1,049.68
600 <u>Supplies</u>				
610 General Supplies	9,279.40	4,625.76		13,905.16
630 Food	929.27	8,108.39		9,037.66
640 Books and Periodicals	1,533.51			1,533.51
650 Supplies & Fees – Technology Related	2,545.20	695.23		3,240.43
Total Supplies	\$14,287.38	\$13,429.38		\$27,716.76
700 <u>Property</u>				
752 Capital Equipment – Original and Additional		159.95		159.95
762 Capitalized Equipment - Replacement	4,682.36	2,499.95		7,182.31
Total Property	\$4,682.36	\$2,659.90		\$7,342.26
800 <u>Other Objects</u>				
810 Dues and Fees	3,950.00	2,293.00		6,243.00
Total Other Objects	\$3,950.00	\$2,293.00		\$6,243.00
Total 2380 Office of the Principal Services	\$1,674,011.19	\$1,201,472.06	\$12,400.00	\$2,887,883.25

LEA : 112676703 Spring Grove Area SD

Printed 11/22/2022 10:49:18 AM

General Fund (10)				
2390 Other Administration Services	<u>Elementary</u>	<u>Secondary</u>	<u>Federal</u>	<u>Total</u>
100 <u>Personnel Services – Salaries</u>				
100 Personnel Services – Salaries			317,679.41	317,679.41
Total Personnel Services – Salaries			\$317,679.41	\$317,679.41
200 <u>Personnel Services – Employee Benefits</u>				
220 Social Security Contributions			23,815.84	23,815.84
250 Unemployment Compensation			6,165.42	6,165.42
260 Workers’ Compensation			2,541.43	2,541.43
Total Personnel Services – Employee Benefits			\$32,522.69	\$32,522.69
600 <u>Supplies</u>				
610 General Supplies				127.04
Total Supplies				\$127.04
Total 2390 Other Administration Services			\$350,202.10	\$350,329.14

LEA : 112676703 Spring Grove Area SD

Printed 11/22/2022 10:49:18 AM

General Fund (10)

2400 Support Services – Pupil Health	<u>Elementary</u>	<u>Secondary</u>	<u>Federal</u>	<u>Total</u>
100 <u>Personnel Services – Salaries</u>				
100 Personnel Services – Salaries				468,627.50
Total Personnel Services – Salaries				\$468,627.50
200 <u>Personnel Services – Employee Benefits</u>				
210 Group Insurance – Contracted Provider				61.60
220 Social Security Contributions				34,472.42
230 PSERS Retirement Contributions				172,773.36
250 Unemployment Compensation				4,952.21
260 Workers' Compensation				3,751.36
270 Group Insurance – Self-Insurance				94,026.19
Total Personnel Services – Employee Benefits				\$310,037.14
300 <u>Purchased Professional and Technical Services</u>				
330 Other Professional Services				2,910.69
Total Purchased Professional and Technical Services				\$2,910.69
500 <u>Other Purchased Services</u>				
580 Travel				393.94
Total Other Purchased Services				\$393.94
600 <u>Supplies</u>				
610 General Supplies				8,940.07
Total Supplies				\$8,940.07
Total 2400 Support Services – Pupil Health				\$790,909.34

LEA : 112676703 Spring Grove Area SD

Printed 11/22/2022 10:49:18 AM

General Fund (10)

2420 Medical Services

	<u>Elementary</u>	<u>Secondary</u>	<u>Federal</u>	<u>Total</u>
100 <u>Personnel Services – Salaries</u>				
100 Personnel Services – Salaries				468,627.50
Total Personnel Services – Salaries				\$468,627.50
200 <u>Personnel Services – Employee Benefits</u>				
210 Group Insurance – Contracted Provider				61.60
220 Social Security Contributions				34,472.42
230 PSERS Retirement Contributions				172,773.36
250 Unemployment Compensation				4,952.21
260 Workers' Compensation				3,751.36
270 Group Insurance – Self-Insurance				94,026.19
Total Personnel Services – Employee Benefits				\$310,037.14
300 <u>Purchased Professional and Technical Services</u>				
330 Other Professional Services				2,910.69
Total Purchased Professional and Technical Services				\$2,910.69
500 <u>Other Purchased Services</u>				
580 Travel				345.00
Total Other Purchased Services				\$345.00
600 <u>Supplies</u>				
610 General Supplies				7,144.00
Total Supplies				\$7,144.00
Total 2420 Medical Services				\$789,064.33

LEA : 112676703 Spring Grove Area SD

Printed 11/22/2022 10:49:18 AM

General Fund (10)				
2430 Dental Services	<u>Elementary</u>	<u>Secondary</u>	<u>Federal</u>	<u>Total</u>
600 <u>Supplies</u>				
610 General Supplies				1,796.07
Total Supplies				\$1,796.07
Total 2430 Dental Services				\$1,796.07

LEA : 112676703 Spring Grove Area SD

Printed 11/22/2022 10:49:18 AM

General Fund (10)

2450 Nonpublic Health Services	<u>Elementary</u>	<u>Secondary</u>	<u>Federal</u>	<u>Total</u>
500 <u>Other Purchased Services</u>				
580 Travel				48.94
Total Other Purchased Services				\$48.94
Total 2450 Nonpublic Health Services				\$48.94

LEA : 112676703 Spring Grove Area SD

Printed 11/22/2022 10:49:18 AM

General Fund (10)

2500 Support Services – Business	<u>Elementary</u>	<u>Secondary</u>	<u>Federal</u>	<u>Total</u>
100 <u>Personnel Services – Salaries</u>				
100 Personnel Services – Salaries				288,472.04
Total Personnel Services – Salaries				\$288,472.04
200 <u>Personnel Services – Employee Benefits</u>				
210 Group Insurance – Contracted Provider				26.48
220 Social Security Contributions				21,217.42
230 PSERS Retirement Contributions				99,331.60
250 Unemployment Compensation				1,965.43
260 Workers' Compensation				(98,781.45)
270 Group Insurance – Self-Insurance				53,528.60
291 Other Retirement Plans				1,992.24
Total Personnel Services – Employee Benefits				\$79,280.32
300 <u>Purchased Professional and Technical Services</u>				
340 Technical Services				41,713.42
Total Purchased Professional and Technical Services				\$41,713.42
400 <u>Purchased Property Services</u>				
430 Repairs and Maintenance Services				5,960.95
440 Rentals				15,225.93
Total Purchased Property Services				\$21,186.88
500 <u>Other Purchased Services</u>				
530 Communications				13,028.24
550 Printing and Binding				3,690.00
580 Travel				1,561.89
Total Other Purchased Services				\$18,280.13
600 <u>Supplies</u>				
610 General Supplies				19,456.42
630 Food				848.88
650 Supplies & Fees – Technology Related				18,352.00
Total Supplies				\$38,657.30
800 <u>Other Objects</u>				
810 Dues and Fees				11,158.32
Total Other Objects				\$11,158.32
Total 2500 Support Services – Business				\$498,748.41

LEA : 112676703 Spring Grove Area SD

Printed 11/22/2022 10:49:18 AM

General Fund (10)

2510 Fiscal Services

	<u>Elementary</u>	<u>Secondary</u>	<u>Federal</u>	<u>Total</u>
100 <u>Personnel Services – Salaries</u>				
100 Personnel Services – Salaries				281,750.72
Total Personnel Services – Salaries				\$281,750.72
200 <u>Personnel Services – Employee Benefits</u>				
210 Group Insurance – Contracted Provider				26.48
220 Social Security Contributions				20,703.23
230 PSERS Retirement Contributions				96,983.16
250 Unemployment Compensation				1,718.23
260 Workers' Compensation				(98,835.24)
270 Group Insurance – Self-Insurance				53,528.60
291 Other Retirement Plans				1,992.24
Total Personnel Services – Employee Benefits				\$76,116.70
300 <u>Purchased Professional and Technical Services</u>				
340 Technical Services				41,713.42
Total Purchased Professional and Technical Services				\$41,713.42
400 <u>Purchased Property Services</u>				
430 Repairs and Maintenance Services				5,960.95
440 Rentals				15,225.93
Total Purchased Property Services				\$21,186.88
500 <u>Other Purchased Services</u>				
530 Communications				13,028.24
550 Printing and Binding				3,690.00
580 Travel				1,561.89
Total Other Purchased Services				\$18,280.13
600 <u>Supplies</u>				
610 General Supplies				19,456.42
630 Food				848.88
650 Supplies & Fees – Technology Related				18,352.00
Total Supplies				\$38,657.30
800 <u>Other Objects</u>				
810 Dues and Fees				11,158.32
Total Other Objects				\$11,158.32
Total 2510 Fiscal Services				\$488,863.47

LEA : 112676703 Spring Grove Area SD

Printed 11/22/2022 10:49:18 AM

General Fund (10)				
2511 Supervision of Fiscal Services - Head of Component	<u>Elementary</u>	<u>Secondary</u>	<u>Federal</u>	<u>Total</u>
100 <u>Personnel Services – Salaries</u>				
100 Personnel Services – Salaries				169,818.22
Total Personnel Services – Salaries				\$169,818.22
200 <u>Personnel Services – Employee Benefits</u>				
210 Group Insurance – Contracted Provider				13.68
220 Social Security Contributions				12,519.93
230 PSERS Retirement Contributions				58,406.76
250 Unemployment Compensation				646.56
260 Workers' Compensation				(99,734.65)
270 Group Insurance – Self-Insurance				25,002.80
291 Other Retirement Plans				1,422.20
Total Personnel Services – Employee Benefits				(\$1,722.72)
300 <u>Purchased Professional and Technical Services</u>				
340 Technical Services				41,713.42
Total Purchased Professional and Technical Services				\$41,713.42
400 <u>Purchased Property Services</u>				
430 Repairs and Maintenance Services				5,960.95
440 Rentals				15,225.93
Total Purchased Property Services				\$21,186.88
500 <u>Other Purchased Services</u>				
530 Communications				13,028.24
550 Printing and Binding				3,690.00
580 Travel				536.89
Total Other Purchased Services				\$17,255.13
600 <u>Supplies</u>				
610 General Supplies				19,368.56
630 Food				848.88
650 Supplies & Fees – Technology Related				18,352.00
Total Supplies				\$38,569.44
800 <u>Other Objects</u>				
810 Dues and Fees				5,682.92
Total Other Objects				\$5,682.92
Total 2511 Supervision of Fiscal Services - Head of Component				\$292,503.29

LEA : 112676703 Spring Grove Area SD

Printed 11/22/2022 10:49:18 AM

General Fund (10)

2514 Payroll Services

Elementary Secondary Federal Total

100	<u>Personnel Services – Salaries</u>			
100	Personnel Services – Salaries			58,060.20
Total Personnel Services – Salaries				\$58,060.20
200	<u>Personnel Services – Employee Benefits</u>			
210	Group Insurance – Contracted Provider			7.20
220	Social Security Contributions			4,093.79
230	PSERS Retirement Contributions			19,917.30
250	Unemployment Compensation			327.45
260	Workers' Compensation			464.49
270	Group Insurance – Self-Insurance			19,354.63
291	Other Retirement Plans			570.04
Total Personnel Services – Employee Benefits				\$44,734.90
600	<u>Supplies</u>			
610	General Supplies			87.86
Total Supplies				\$87.86
Total 2514 Payroll Services				\$102,882.96

LEA : 112676703 Spring Grove Area SD

Printed 11/22/2022 10:49:18 AM

General Fund (10)

2515 Financial Accounting Services	<u>Elementary</u>	<u>Secondary</u>	<u>Federal</u>	<u>Total</u>
100 <u>Personnel Services – Salaries</u>				
100 Personnel Services – Salaries				53,872.30
Total Personnel Services – Salaries				\$53,872.30
200 <u>Personnel Services – Employee Benefits</u>				
210 Group Insurance – Contracted Provider				5.60
220 Social Security Contributions				4,089.51
230 PSERS Retirement Contributions				18,659.10
250 Unemployment Compensation				744.22
260 Workers' Compensation				434.92
270 Group Insurance – Self-Insurance				9,171.17
Total Personnel Services – Employee Benefits				\$33,104.52
500 <u>Other Purchased Services</u>				
580 Travel				1,025.00
Total Other Purchased Services				\$1,025.00
800 <u>Other Objects</u>				
810 Dues and Fees				80.00
Total Other Objects				\$80.00
Total 2515 Financial Accounting Services				\$88,081.82

LEA : 112676703 Spring Grove Area SD

Printed 11/22/2022 10:49:18 AM

General Fund (10)				
2519 Other Fiscal Services	<u>Elementary</u>	<u>Secondary</u>	<u>Federal</u>	<u>Total</u>
800 <u>Other Objects</u>				
810 Dues and Fees				5,395.40
Total Other Objects				\$5,395.40
Total 2519 Other Fiscal Services				\$5,395.40

LEA : 112676703 Spring Grove Area SD

Printed 11/22/2022 10:49:18 AM

General Fund (10)

2540 Printing, Publishing and Duplicating Services	<u>Elementary</u>	<u>Secondary</u>	<u>Federal</u>	<u>Total</u>
100 <u>Personnel Services – Salaries</u>				
100 Personnel Services – Salaries				6,721.32
Total Personnel Services – Salaries				\$6,721.32
200 <u>Personnel Services – Employee Benefits</u>				
220 Social Security Contributions				514.19
230 PSERS Retirement Contributions				2,348.44
250 Unemployment Compensation				247.20
260 Workers' Compensation				53.79
Total Personnel Services – Employee Benefits				\$3,163.62
Total 2540 Printing, Publishing and Duplicating Services				\$9,884.94

LEA : 112676703 Spring Grove Area SD

Printed 11/22/2022 10:49:18 AM

General Fund (10)				
2600 Operation and Maintenance of Plant Services	<u>Elementary</u>	<u>Secondary</u>	<u>Federal</u>	<u>Total</u>
100 <u>Personnel Services – Salaries</u>				
100 Personnel Services – Salaries				1,542,575.18
Total Personnel Services – Salaries				\$1,542,575.18
200 <u>Personnel Services – Employee Benefits</u>				
210 Group Insurance – Contracted Provider				303.92
220 Social Security Contributions				112,992.69
230 PSERS Retirement Contributions				536,220.23
250 Unemployment Compensation				20,202.78
260 Workers' Compensation				12,443.26
270 Group Insurance – Self-Insurance				410,999.88
291 Other Retirement Plans				758.54
Total Personnel Services – Employee Benefits				\$1,093,921.30
300 <u>Purchased Professional and Technical Services</u>				
340 Technical Services			166,350.77	619,681.87
350 Security / Safety Services				302.05
Total Purchased Professional and Technical Services			\$166,350.77	\$619,983.92
400 <u>Purchased Property Services</u>				
410 Cleaning Services				134,992.51
420 Utility Services				1,058,768.58
430 Repairs and Maintenance Services			819,016.07	1,400,605.51
440 Rentals				4,813.99
460 Extermination Services				7,874.86
Total Purchased Property Services			\$819,016.07	\$2,607,055.45
500 <u>Other Purchased Services</u>				
521 Fire Insurance				11,952.00
522 Automotive Liability Insurance				12,342.00
523 General Property and Liability Insurance				36,148.00
529 Other Insurance				200,864.00
530 Communications				141,347.58
580 Travel				12,648.02
Total Other Purchased Services				\$415,301.60
600 <u>Supplies</u>				
610 General Supplies	173,463.29	202,324.17	20,868.18	396,655.64
620 Energy				433,216.23
630 Food				1,599.66
Total Supplies	\$173,463.29	\$202,324.17	\$20,868.18	\$831,471.53
700 <u>Property</u>				
752 Capital Equipment – Original and Additional			28,552.32	80,605.76
762 Capitalized Equipment - Replacement				75,353.05
Total Property			\$28,552.32	\$155,958.81
800 <u>Other Objects</u>				

LEA : 112676703 Spring Grove Area SD

Printed 11/22/2022 10:49:18 AM

General Fund (10)

2600 Operation and Maintenance of Plant Services	<u>Elementary</u>	<u>Secondary</u>	<u>Federal</u>	<u>Total</u>
800 <u>Other Objects</u>				
810 Dues and Fees				5,537.12
Total Other Objects				\$5,537.12
Total 2600 Operation and Maintenance of Plant Services	\$173,463.29	\$202,324.17	\$1,034,787.34	\$7,271,804.91

LEA : 112676703 Spring Grove Area SD

Printed 11/22/2022 10:49:18 AM

General Fund (10)

2610 Supervision of Operation and Maintenance of Plant Services	<u>Elementary</u>	<u>Secondary</u>	<u>Federal</u>	<u>Total</u>
100 <u>Personnel Services – Salaries</u>				
100 Personnel Services – Salaries				97,016.28
Total Personnel Services – Salaries				\$97,016.28
200 <u>Personnel Services – Employee Benefits</u>				
210 Group Insurance – Contracted Provider				7.92
220 Social Security Contributions				7,417.50
230 PSERS Retirement Contributions				28,839.36
250 Unemployment Compensation				359.96
260 Workers' Compensation				776.13
270 Group Insurance – Self-Insurance				575.01
291 Other Retirement Plans				758.54
Total Personnel Services – Employee Benefits				\$38,734.42
Total 2610 Supervision of Operation and Maintenance of Plant Services				\$135,750.70

LEA : 112676703 Spring Grove Area SD

Printed 11/22/2022 10:49:18 AM

General Fund (10)

2611 Supervision of Operation and Maintenance of Plant Services – Head of Component	<u>Elementary</u>	<u>Secondary</u>	<u>Federal</u>	<u>Total</u>
100 <u>Personnel Services – Salaries</u>				
100 Personnel Services – Salaries				97,016.28
Total Personnel Services – Salaries				\$97,016.28
200 <u>Personnel Services – Employee Benefits</u>				
210 Group Insurance – Contracted Provider				7.92
220 Social Security Contributions				7,417.50
230 PSERS Retirement Contributions				28,839.36
250 Unemployment Compensation				359.96
260 Workers' Compensation				776.13
270 Group Insurance – Self-Insurance				575.01
291 Other Retirement Plans				758.54
Total Personnel Services – Employee Benefits				\$38,734.42
Total 2611 Supervision of Operation and Maintenance of Plant Services – Head of Component				\$135,750.70

LEA : 112676703 Spring Grove Area SD

Printed 11/22/2022 10:49:18 AM

General Fund (10)

2620 Operation of Buildings Services	Elementary	Secondary	Federal	Total
100 <u>Personnel Services – Salaries</u>				
100 Personnel Services – Salaries				1,129,929.65
Total Personnel Services – Salaries				\$1,129,929.65
200 <u>Personnel Services – Employee Benefits</u>				
210 Group Insurance – Contracted Provider				260.00
220 Social Security Contributions				82,098.69
230 PSERS Retirement Contributions				397,078.39
250 Unemployment Compensation				16,097.01
260 Workers' Compensation				9,122.75
270 Group Insurance – Self-Insurance				336,341.38
Total Personnel Services – Employee Benefits				\$840,998.22
300 <u>Purchased Professional and Technical Services</u>				
340 Technical Services			32,432.60	354,280.07
350 Security / Safety Services				302.05
Total Purchased Professional and Technical Services			\$32,432.60	\$354,582.12
400 <u>Purchased Property Services</u>				
410 Cleaning Services				96,666.33
420 Utility Services				1,058,768.58
430 Repairs and Maintenance Services			819,016.07	1,375,311.72
440 Rentals				4,813.99
460 Extermination Services				7,874.86
Total Purchased Property Services			\$819,016.07	\$2,543,435.48
500 <u>Other Purchased Services</u>				
521 Fire Insurance				11,952.00
523 General Property and Liability Insurance				36,148.00
529 Other Insurance				200,864.00
580 Travel				1,300.02
Total Other Purchased Services				\$250,264.02
600 <u>Supplies</u>				
610 General Supplies	162,193.71	193,261.89	20,868.18	376,323.78
620 Energy				433,216.23
630 Food				1,526.56
Total Supplies	\$162,193.71	\$193,261.89	\$20,868.18	\$811,066.57
700 <u>Property</u>				
752 Capital Equipment – Original and Additional			28,552.32	80,605.76
762 Capitalized Equipment - Replacement				75,353.05
Total Property			\$28,552.32	\$155,958.81
800 <u>Other Objects</u>				
810 Dues and Fees				5,237.12
Total Other Objects				\$5,237.12
Total 2620 Operation of Buildings Services	\$162,193.71	\$193,261.89	\$900,869.17	\$6,091,471.99

LEA : 112676703 Spring Grove Area SD

Printed 11/22/2022 10:49:18 AM

General Fund (10)				
2630 Care and Upkeep of Grounds Services	<u>Elementary</u>	<u>Secondary</u>	<u>Federal</u>	<u>Total</u>
100 <u>Personnel Services – Salaries</u>				
100 Personnel Services – Salaries				315,629.25
Total Personnel Services – Salaries				\$315,629.25
200 <u>Personnel Services – Employee Benefits</u>				
210 Group Insurance – Contracted Provider				36.00
220 Social Security Contributions				23,476.50
230 PSERS Retirement Contributions				110,302.48
250 Unemployment Compensation				3,745.81
260 Workers' Compensation				2,544.38
270 Group Insurance – Self-Insurance				74,083.49
Total Personnel Services – Employee Benefits				\$214,188.66
300 <u>Purchased Professional and Technical Services</u>				
340 Technical Services				340.00
Total Purchased Professional and Technical Services				\$340.00
400 <u>Purchased Property Services</u>				
410 Cleaning Services				38,326.18
430 Repairs and Maintenance Services				14,946.17
Total Purchased Property Services				\$53,272.35
600 <u>Supplies</u>				
610 General Supplies	9,125.12	8,151.09		17,276.21
Total Supplies	\$9,125.12	\$8,151.09		\$17,276.21
Total 2630 Care and Upkeep of Grounds Services	\$9,125.12	\$8,151.09		\$600,706.47

LEA : 112676703 Spring Grove Area SD

Printed 11/22/2022 10:49:18 AM

General Fund (10)

2650 Vehicle Operation and Maintenance Services (Other Than Student Transportation Vehicles)	<u>Elementary</u>	<u>Secondary</u>	<u>Federal</u>	<u>Total</u>
400 <u>Purchased Property Services</u>				
430 Repairs and Maintenance Services				10,347.62
Total Purchased Property Services				\$10,347.62
500 <u>Other Purchased Services</u>				
522 Automotive Liability Insurance				12,342.00
Total Other Purchased Services				\$12,342.00
600 <u>Supplies</u>				
610 General Supplies	606.71	538.03		1,144.74
Total Supplies	\$606.71	\$538.03		\$1,144.74
Total 2650 Vehicle Operation and Maintenance Services (Other Than Student Transportation Vehicles)	\$606.71	\$538.03		\$23,834.36

LEA : 112676703 Spring Grove Area SD

Printed 11/22/2022 10:49:18 AM

General Fund (10)				
2660 Safety and Security Services	<u>Elementary</u>	<u>Secondary</u>	<u>Federal</u>	<u>Total</u>
300 <u>Purchased Professional and Technical Services</u>				
340 Technical Services			133,918.17	264,116.80
Total Purchased Professional and Technical Services			\$133,918.17	\$264,116.80
500 <u>Other Purchased Services</u>				
530 Communications				21.96
580 Travel				11,348.00
Total Other Purchased Services				\$11,369.96
600 <u>Supplies</u>				
610 General Supplies	1,537.75	373.16		1,910.91
630 Food				73.10
Total Supplies	\$1,537.75	\$373.16		\$1,984.01
800 <u>Other Objects</u>				
810 Dues and Fees				300.00
Total Other Objects				\$300.00
Total 2660 Safety and Security Services	\$1,537.75	\$373.16	\$133,918.17	\$277,770.77

LEA : 112676703 Spring Grove Area SD

Printed 11/22/2022 10:49:18 AM

General Fund (10)

2690 Other Operation and Maintenance of Plant Services	<u>Elementary</u>	<u>Secondary</u>	<u>Federal</u>	<u>Total</u>
300 <u>Purchased Professional and Technical Services</u>				
340 Technical Services				945.00
Total Purchased Professional and Technical Services				\$945.00
500 <u>Other Purchased Services</u>				
530 Communications				141,325.62
Total Other Purchased Services				\$141,325.62
Total 2690 Other Operation and Maintenance of Plant Services				\$142,270.62

LEA : 112676703 Spring Grove Area SD

Printed 11/22/2022 10:49:18 AM

General Fund (10)

2700 Student Transportation Services	<u>Elementary</u>	<u>Secondary</u>	<u>Federal</u>	<u>Total</u>
100 <u>Personnel Services – Salaries</u>				
100 Personnel Services – Salaries				121,843.71
Total Personnel Services – Salaries				\$121,843.71
200 <u>Personnel Services – Employee Benefits</u>				
210 Group Insurance – Contracted Provider				10.80
220 Social Security Contributions				8,817.58
230 PSERS Retirement Contributions				41,913.44
250 Unemployment Compensation				830.99
260 Workers' Compensation				974.79
270 Group Insurance – Self-Insurance				10,020.71
291 Other Retirement Plans				793.95
Total Personnel Services – Employee Benefits				\$63,362.26
300 <u>Purchased Professional and Technical Services</u>				
340 Technical Services				6,321.82
Total Purchased Professional and Technical Services				\$6,321.82
400 <u>Purchased Property Services</u>				
430 Repairs and Maintenance Services				3,467.06
Total Purchased Property Services				\$3,467.06
500 <u>Other Purchased Services</u>				
513 Contracted Carriers			85,223.97	4,625,457.12
516 Student Transportation Services From the IU				209,312.04
Total Other Purchased Services			\$85,223.97	\$4,834,769.16
600 <u>Supplies</u>				
610 General Supplies			1,354.00	6,171.39
620 Energy				345,079.89
630 Food				250.00
640 Books and Periodicals				56.44
Total Supplies			\$1,354.00	\$351,557.72
800 <u>Other Objects</u>				
810 Dues and Fees				50.00
Total Other Objects				\$50.00
Total 2700 Student Transportation Services			\$86,577.97	\$5,381,371.73

LEA : 112676703 Spring Grove Area SD

Printed 11/22/2022 10:49:18 AM

General Fund (10)

2710 Supervision of Student Transportation Services	<u>Elementary</u>	<u>Secondary</u>	<u>Federal</u>	<u>Total</u>
100 <u>Personnel Services – Salaries</u>				
100 Personnel Services – Salaries				113,904.11
Total Personnel Services – Salaries				\$113,904.11
200 <u>Personnel Services – Employee Benefits</u>				
210 Group Insurance – Contracted Provider				10.08
220 Social Security Contributions				8,243.23
230 PSERS Retirement Contributions				39,139.25
250 Unemployment Compensation				799.83
260 Workers' Compensation				911.35
270 Group Insurance – Self-Insurance				9,304.39
291 Other Retirement Plans				793.95
Total Personnel Services – Employee Benefits				\$59,202.08
300 <u>Purchased Professional and Technical Services</u>				
340 Technical Services				96.00
Total Purchased Professional and Technical Services				\$96.00
600 <u>Supplies</u>				
610 General Supplies			1,354.00	6,171.39
630 Food				250.00
640 Books and Periodicals				56.44
Total Supplies			\$1,354.00	\$6,477.83
800 <u>Other Objects</u>				
810 Dues and Fees				50.00
Total Other Objects				\$50.00
Total 2710 Supervision of Student Transportation Services			\$1,354.00	\$179,730.02

LEA : 112676703 Spring Grove Area SD

Printed 11/22/2022 10:49:18 AM

General Fund (10)

2719 Supervision of Student Transportation Services – All Other Supervision	<u>Elementary</u>	<u>Secondary</u>	<u>Federal</u>	<u>Total</u>
100 <u>Personnel Services – Salaries</u>				
100 Personnel Services – Salaries				113,904.11
Total Personnel Services – Salaries				\$113,904.11
200 <u>Personnel Services – Employee Benefits</u>				
210 Group Insurance – Contracted Provider				10.08
220 Social Security Contributions				8,243.23
230 PSERS Retirement Contributions				39,139.25
250 Unemployment Compensation				799.83
260 Workers' Compensation				911.35
270 Group Insurance – Self-Insurance				9,304.39
291 Other Retirement Plans				793.95
Total Personnel Services – Employee Benefits				\$59,202.08
300 <u>Purchased Professional and Technical Services</u>				
340 Technical Services				96.00
Total Purchased Professional and Technical Services				\$96.00
600 <u>Supplies</u>				
610 General Supplies			1,354.00	6,171.39
630 Food				250.00
640 Books and Periodicals				56.44
Total Supplies			\$1,354.00	\$6,477.83
800 <u>Other Objects</u>				
810 Dues and Fees				50.00
Total Other Objects				\$50.00
Total 2719 Supervision of Student Transportation Services – All Other Supervision			\$1,354.00	\$179,730.02

LEA : 112676703 Spring Grove Area SD

Printed 11/22/2022 10:49:18 AM

General Fund (10)

2720 Vehicle Operation Services	<u>Elementary</u>	<u>Secondary</u>	<u>Federal</u>	<u>Total</u>
300 <u>Purchased Professional and Technical Services</u>				
340 Technical Services				6,225.82
Total Purchased Professional and Technical Services				\$6,225.82
400 <u>Purchased Property Services</u>				
430 Repairs and Maintenance Services				3,467.06
Total Purchased Property Services				\$3,467.06
500 <u>Other Purchased Services</u>				
513 Contracted Carriers			85,223.97	4,570,378.44
516 Student Transportation Services From the IU				209,312.04
Total Other Purchased Services			\$85,223.97	\$4,779,690.48
600 <u>Supplies</u>				
620 Energy				345,079.89
Total Supplies				\$345,079.89
Total 2720 Vehicle Operation Services			\$85,223.97	\$5,134,463.25

LEA : 112676703 Spring Grove Area SD

Printed 11/22/2022 10:49:18 AM

General Fund (10)

2750 Nonpublic Transportation	<u>Elementary</u>	<u>Secondary</u>	<u>Federal</u>	<u>Total</u>
100 <u>Personnel Services – Salaries</u>				
100 Personnel Services – Salaries				7,939.60
Total Personnel Services – Salaries				\$7,939.60
200 <u>Personnel Services – Employee Benefits</u>				
210 Group Insurance – Contracted Provider				0.72
220 Social Security Contributions				574.35
230 PSERS Retirement Contributions				2,774.19
250 Unemployment Compensation				31.16
260 Workers' Compensation				63.44
270 Group Insurance – Self-Insurance				716.32
Total Personnel Services – Employee Benefits				\$4,160.18
500 <u>Other Purchased Services</u>				
513 Contracted Carriers				55,078.68
Total Other Purchased Services				\$55,078.68
Total 2750 Nonpublic Transportation				\$67,178.46

LEA : 112676703 Spring Grove Area SD

Printed 11/22/2022 10:49:18 AM

General Fund (10)

2800 Support Services – Central	<u>Elementary</u>	<u>Secondary</u>	<u>Federal</u>	<u>Total</u>
100 <u>Personnel Services – Salaries</u>				
100 Personnel Services – Salaries				281,900.55
Total Personnel Services – Salaries				\$281,900.55
200 <u>Personnel Services – Employee Benefits</u>				
210 Group Insurance – Contracted Provider				36.80
220 Social Security Contributions				20,409.32
230 PSERS Retirement Contributions				97,493.02
240 Tuition Reimbursement				62,296.00
250 Unemployment Compensation				1,960.66
260 Workers' Compensation				2,255.18
270 Group Insurance – Self-Insurance				61,011.40
291 Other Retirement Plans				1,688.71
Total Personnel Services – Employee Benefits				\$247,151.09
300 <u>Purchased Professional and Technical Services</u>				
330 Other Professional Services				11,068.86
340 Technical Services			25,687.00	60,990.42
Total Purchased Professional and Technical Services			\$25,687.00	\$72,059.28
500 <u>Other Purchased Services</u>				
530 Communications				245.00
550 Printing and Binding				892.00
580 Travel			1,160.24	3,439.31
Total Other Purchased Services			\$1,160.24	\$4,576.31
600 <u>Supplies</u>				
610 General Supplies			4,187.72	14,890.99
630 Food				168.75
640 Books and Periodicals				217.96
Total Supplies			\$4,187.72	\$15,277.70
800 <u>Other Objects</u>				
810 Dues and Fees			8,192.10	94,458.30
Total Other Objects			\$8,192.10	\$94,458.30
Total 2800 Support Services – Central			\$39,227.06	\$715,423.23

LEA : 112676703 Spring Grove Area SD

Printed 11/22/2022 10:49:18 AM

General Fund (10)				
2820 Information Services	<u>Elementary</u>	<u>Secondary</u>	<u>Federal</u>	<u>Total</u>
100 <u>Personnel Services – Salaries</u>				
100 Personnel Services – Salaries				97,412.90
Total Personnel Services – Salaries				\$97,412.90
200 <u>Personnel Services – Employee Benefits</u>				
210 Group Insurance – Contracted Provider				14.40
220 Social Security Contributions				7,240.93
230 PSERS Retirement Contributions				33,642.47
250 Unemployment Compensation				662.56
260 Workers' Compensation				779.35
270 Group Insurance – Self-Insurance				10,364.56
291 Other Retirement Plans				754.26
Total Personnel Services – Employee Benefits				\$53,458.53
500 <u>Other Purchased Services</u>				
530 Communications				245.00
550 Printing and Binding				892.00
580 Travel				606.79
Total Other Purchased Services				\$1,743.79
600 <u>Supplies</u>				
610 General Supplies			3,087.72	8,443.63
640 Books and Periodicals				217.96
Total Supplies			\$3,087.72	\$8,661.59
800 <u>Other Objects</u>				
810 Dues and Fees				1,884.00
Total Other Objects				\$1,884.00
Total 2820 Information Services			\$3,087.72	\$163,160.81

LEA : 112676703 Spring Grove Area SD

Printed 11/22/2022 10:49:18 AM

General Fund (10)

2823 Public Information Services

	<u>Elementary</u>	<u>Secondary</u>	<u>Federal</u>	<u>Total</u>
100 <u>Personnel Services – Salaries</u>				
100 Personnel Services – Salaries				97,412.90
Total Personnel Services – Salaries				\$97,412.90
200 <u>Personnel Services – Employee Benefits</u>				
210 Group Insurance – Contracted Provider				14.40
220 Social Security Contributions				7,240.93
230 PSERS Retirement Contributions				33,642.47
250 Unemployment Compensation				662.56
260 Workers' Compensation				779.35
270 Group Insurance – Self-Insurance				10,364.56
291 Other Retirement Plans				754.26
Total Personnel Services – Employee Benefits				\$53,458.53
500 <u>Other Purchased Services</u>				
530 Communications				245.00
550 Printing and Binding				892.00
580 Travel				606.79
Total Other Purchased Services				\$1,743.79
600 <u>Supplies</u>				
610 General Supplies			3,087.72	8,443.63
640 Books and Periodicals				217.96
Total Supplies			\$3,087.72	\$8,661.59
800 <u>Other Objects</u>				
810 Dues and Fees				1,884.00
Total Other Objects				\$1,884.00
Total 2823 Public Information Services			\$3,087.72	\$163,160.81

LEA : 112676703 Spring Grove Area SD

Printed 11/22/2022 10:49:18 AM

General Fund (10)

2830 Staff Services

	<u>Elementary</u>	<u>Secondary</u>	<u>Federal</u>	<u>Total</u>
100 <u>Personnel Services – Salaries</u>				
100 Personnel Services – Salaries				184,487.65
Total Personnel Services – Salaries				\$184,487.65
200 <u>Personnel Services – Employee Benefits</u>				
210 Group Insurance – Contracted Provider				22.40
220 Social Security Contributions				13,168.39
230 PSERS Retirement Contributions				63,850.55
240 Tuition Reimbursement				62,296.00
250 Unemployment Compensation				1,298.10
260 Workers' Compensation				1,475.83
270 Group Insurance – Self-Insurance				50,646.84
291 Other Retirement Plans				934.45
Total Personnel Services – Employee Benefits				\$193,692.56
300 <u>Purchased Professional and Technical Services</u>				
330 Other Professional Services				11,068.86
340 Technical Services			25,687.00	60,990.42
Total Purchased Professional and Technical Services			\$25,687.00	\$72,059.28
500 <u>Other Purchased Services</u>				
580 Travel				1,672.28
Total Other Purchased Services				\$1,672.28
600 <u>Supplies</u>				
610 General Supplies			1,100.00	6,447.36
630 Food				168.75
Total Supplies			\$1,100.00	\$6,616.11
800 <u>Other Objects</u>				
810 Dues and Fees			7,727.10	92,109.30
Total Other Objects			\$7,727.10	\$92,109.30
Total 2830 Staff Services			\$34,514.10	\$550,637.18

LEA : 112676703 Spring Grove Area SD

Printed 11/22/2022 10:49:18 AM

General Fund (10)

2831 Supervision of Staff Services

	<u>Elementary</u>	<u>Secondary</u>	<u>Federal</u>	<u>Total</u>
100 <u>Personnel Services – Salaries</u>				
100 Personnel Services – Salaries				184,487.65
Total Personnel Services – Salaries				\$184,487.65
200 <u>Personnel Services – Employee Benefits</u>				
210 Group Insurance – Contracted Provider				22.40
220 Social Security Contributions				13,168.39
230 PSERS Retirement Contributions				63,850.55
250 Unemployment Compensation				1,298.10
260 Workers' Compensation				1,475.83
270 Group Insurance – Self-Insurance				50,646.84
291 Other Retirement Plans				934.45
Total Personnel Services – Employee Benefits				\$131,396.56
300 <u>Purchased Professional and Technical Services</u>				
330 Other Professional Services				1,883.86
340 Technical Services			25,687.00	55,334.60
Total Purchased Professional and Technical Services			\$25,687.00	\$57,218.46
500 <u>Other Purchased Services</u>				
580 Travel				667.84
Total Other Purchased Services				\$667.84
600 <u>Supplies</u>				
610 General Supplies			1,100.00	6,447.36
630 Food				72.70
Total Supplies			\$1,100.00	\$6,520.06
800 <u>Other Objects</u>				
810 Dues and Fees			7,727.10	13,821.00
Total Other Objects			\$7,727.10	\$13,821.00
Total 2831 Supervision of Staff Services			\$34,514.10	\$394,111.57

LEA : 112676703 Spring Grove Area SD

Printed 11/22/2022 10:49:18 AM

General Fund (10)				
2832 Recruitment and Placement Services	<u>Elementary</u>	<u>Secondary</u>	<u>Federal</u>	<u>Total</u>
300 <u>Purchased Professional and Technical Services</u>				
340 Technical Services				750.00
Total Purchased Professional and Technical Services				\$750.00
500 <u>Other Purchased Services</u>				
580 Travel				1,004.44
Total Other Purchased Services				\$1,004.44
800 <u>Other Objects</u>				
810 Dues and Fees				78,288.30
Total Other Objects				\$78,288.30
Total 2832 Recruitment and Placement Services				\$80,042.74

LEA : 112676703 Spring Grove Area SD

Printed 11/22/2022 10:49:18 AM

General Fund (10)

2834 Staff Development Services – Non-Instructional, Certified Staff Only	<u>Elementary</u>	<u>Secondary</u>	<u>Federal</u>	<u>Total</u>
200 <u>Personnel Services – Employee Benefits</u>				
240 Tuition Reimbursement				61,334.00
Total Personnel Services – Employee Benefits				\$61,334.00
300 <u>Purchased Professional and Technical Services</u>				
340 Technical Services				4,905.82
Total Purchased Professional and Technical Services				\$4,905.82
600 <u>Supplies</u>				
630 Food				96.05
Total Supplies				\$96.05
Total 2834 Staff Development Services – Non-Instructional, Certified Staff Only				\$66,335.87

LEA : 112676703 Spring Grove Area SD

Printed 11/22/2022 10:49:18 AM

General Fund (10)

2835 Health Services

	<u>Elementary</u>	<u>Secondary</u>	<u>Federal</u>	<u>Total</u>
300 <u>Purchased Professional and Technical Services</u>				
330 Other Professional Services				9,185.00
Total Purchased Professional and Technical Services				\$9,185.00
Total 2835 Health Services				\$9,185.00

LEA : 112676703 Spring Grove Area SD

Printed 11/22/2022 10:49:18 AM

General Fund (10)

2836 Staff Development Services – Non-Instructional, Non-Certified Staff Only	<u>Elementary</u>	<u>Secondary</u>	<u>Federal</u>	<u>Total</u>
200 <u>Personnel Services – Employee Benefits</u>				
240 Tuition Reimbursement				962.00
Total Personnel Services – Employee Benefits				\$962.00
Total 2836 Staff Development Services – Non-Instructional, Non-Certified Staff Only				\$962.00

LEA : 112676703 Spring Grove Area SD

Printed 11/22/2022 10:49:18 AM

General Fund (10)

2850 State and Federal Agency Liaison Services	<u>Elementary</u>	<u>Secondary</u>	<u>Federal</u>	<u>Total</u>
500 <u>Other Purchased Services</u>				
580 Travel			1,160.24	1,160.24
Total Other Purchased Services			\$1,160.24	\$1,160.24
800 <u>Other Objects</u>				
810 Dues and Fees			465.00	465.00
Total Other Objects			\$465.00	\$465.00
Total 2850 State and Federal Agency Liaison Services			\$1,625.24	\$1,625.24

LEA : 112676703 Spring Grove Area SD

Printed 11/22/2022 10:49:18 AM

General Fund (10)

2900 Other Support Services	<u>Elementary</u>	<u>Secondary</u>	<u>Federal</u>	<u>Total</u>
500 <u>Other Purchased Services</u>				
595 IU Payments By Withholding				5,872.84
Total Other Purchased Services				\$5,872.84
Total 2900 Other Support Services				\$5,872.84

LEA : 112676703 Spring Grove Area SD

Printed 11/22/2022 10:49:18 AM

General Fund (10)

2910 Support Services Not Listed Elsewhere In the 2000 Series

<u>Elementary</u>	<u>Secondary</u>	<u>Federal</u>	<u>Total</u>
-------------------	------------------	----------------	--------------

500 Other Purchased Services

595 IU Payments By Withholding			5,872.84
--------------------------------	--	--	----------

Total Other Purchased Services			\$5,872.84
---------------------------------------	--	--	-------------------

Total 2910 Support Services Not Listed Elsewhere In the 2000 Series			\$5,872.84
----------------------------------------------------------------------------	--	--	-------------------

LEA : 112676703 Spring Grove Area SD

Printed 11/22/2022 10:49:33 AM

General Fund (10)

3000 Operation of Non-Instructional Services		<u>Total</u>
100 <u>Personnel Services – Salaries</u>		
100 Personnel Services – Salaries		600,305.63
Total Personnel Services – Salaries		\$600,305.63
200 <u>Personnel Services – Employee Benefits</u>		
210 Group Insurance – Contracted Provider		24.40
220 Social Security Contributions		45,722.82
230 PSERS Retirement Contributions		204,586.52
250 Unemployment Compensation		9,689.14
260 Workers' Compensation		4,873.69
270 Group Insurance – Self-Insurance		22,333.11
Total Personnel Services – Employee Benefits		\$287,229.68
300 <u>Purchased Professional and Technical Services</u>		
330 Other Professional Services		67,631.95
340 Technical Services		22,720.23
Total Purchased Professional and Technical Services		\$90,352.18
400 <u>Purchased Property Services</u>		
410 Cleaning Services		4,613.40
430 Repairs and Maintenance Services		10,631.88
440 Rentals		1,663.00
Total Purchased Property Services		\$16,908.28
500 <u>Other Purchased Services</u>		
510 Student Transportation Services		101,026.13
520 Insurance – General		5,517.00
530 Communications		27.58
550 Printing and Binding		897.71
580 Travel		21,530.48
Total Other Purchased Services		\$128,998.90
600 <u>Supplies</u>		
610 General Supplies		105,969.38
630 Food		7,342.15
640 Books and Periodicals		8,058.04
Total Supplies		\$121,369.57
700 <u>Property</u>		
752 Capital Equipment – Original and Additional		17,412.03
762 Capitalized Equipment - Replacement		32,831.90
Total Property		\$50,243.93
800 <u>Other Objects</u>		
810 Dues and Fees		28,185.50
Total Other Objects		\$28,185.50
Total 3000 Operation of Non-Instructional Services		\$1,323,593.67

LEA : 112676703 Spring Grove Area SD

Printed 11/22/2022 10:49:33 AM

General Fund (10)

3200 Student Activities

	<u>Elementary</u>	<u>Secondary</u>	<u>Federal</u>	<u>Total</u>
100 <u>Personnel Services – Salaries</u>				
100 Personnel Services – Salaries				578,381.82
Total Personnel Services – Salaries				\$578,381.82
200 <u>Personnel Services – Employee Benefits</u>				
210 Group Insurance – Contracted Provider				24.40
220 Social Security Contributions				44,481.01
230 PSERS Retirement Contributions				198,878.76
250 Unemployment Compensation				9,060.12
260 Workers' Compensation				4,692.96
270 Group Insurance – Self-Insurance				22,333.11
Total Personnel Services – Employee Benefits				\$279,470.36
300 <u>Purchased Professional and Technical Services</u>				
330 Other Professional Services				67,631.95
340 Technical Services			2,425.00	22,576.98
Total Purchased Professional and Technical Services			\$2,425.00	\$90,208.93
400 <u>Purchased Property Services</u>				
410 Cleaning Services				4,613.40
430 Repairs and Maintenance Services				10,631.88
440 Rentals				1,663.00
Total Purchased Property Services				\$16,908.28
500 <u>Other Purchased Services</u>				
510 Student Transportation Services				101,026.13
520 Insurance – General				5,517.00
530 Communications				27.58
550 Printing and Binding				528.71
580 Travel				21,530.48
Total Other Purchased Services				\$128,629.90
600 <u>Supplies</u>				
610 General Supplies				97,912.08
630 Food				5,668.84
640 Books and Periodicals				4,728.74
Total Supplies				\$108,309.66
700 <u>Property</u>				
752 Capital Equipment – Original and Additional				17,412.03
762 Capitalized Equipment - Replacement				31,700.95
Total Property				\$49,112.98
800 <u>Other Objects</u>				
810 Dues and Fees				28,185.50
Total Other Objects				\$28,185.50
Total 3200 Student Activities			\$2,425.00	\$1,279,207.43

LEA : 112676703 Spring Grove Area SD

Printed 11/22/2022 10:49:33 AM

General Fund (10)

3300 Community Services	<u>Elementary</u>	<u>Secondary</u>	<u>Federal</u>	<u>Total</u>
100 <u>Personnel Services – Salaries</u>				
100 Personnel Services – Salaries			163.98	21,923.81
Total Personnel Services – Salaries			\$163.98	\$21,923.81
200 <u>Personnel Services – Employee Benefits</u>				
220 Social Security Contributions			12.04	1,241.81
230 PSERS Retirement Contributions			57.30	5,707.76
250 Unemployment Compensation				629.02
260 Workers' Compensation			1.32	180.73
Total Personnel Services – Employee Benefits			\$70.66	\$7,759.32
300 <u>Purchased Professional and Technical Services</u>				
340 Technical Services			143.25	143.25
Total Purchased Professional and Technical Services			\$143.25	\$143.25
500 <u>Other Purchased Services</u>				
550 Printing and Binding				369.00
Total Other Purchased Services				\$369.00
600 <u>Supplies</u>				
610 General Supplies			7,141.41	8,057.30
630 Food			1,673.31	1,673.31
640 Books and Periodicals			2,684.10	3,329.30
Total Supplies			\$11,498.82	\$13,059.91
700 <u>Property</u>				
762 Capitalized Equipment - Replacement				1,130.95
Total Property				\$1,130.95
Total 3300 Community Services			\$11,876.71	\$44,386.24

LEA : 112676703 Spring Grove Area SD

Printed 11/22/2022 10:49:43 AM

General Fund (10)

5000 Other Expenditures and Financing Uses		<u>Total</u>
800 <u>Other Objects</u>		
830 Interest		782,580.09
880 Refunds of Prior Years' Receipts		254,359.30
Total Other Objects		\$1,036,939.39
900 <u>Other Uses of Funds</u>		
910 Redemption of Principal		5,593,214.54
932 Capital Reserve Fund Transfers Applicable To Fund 32		350,000.00
Total Other Uses of Funds		\$5,943,214.54
Total 5000 Other Expenditures and Financing Uses		\$6,980,153.93

LEA : 112676703 Spring Grove Area SD

Printed 11/22/2022 10:49:43 AM

General Fund (10)

5100 Debt Service / Other Expenditures and Financing Uses	<u>Elementary</u>	<u>Secondary</u>	<u>Federal</u>	<u>Total</u>
800 <u>Other Objects</u>				
830 Interest				782,580.09
880 Refunds of Prior Years' Receipts				254,359.30
Total Other Objects				\$1,036,939.39
900 <u>Other Uses of Funds</u>				
910 Redemption of Principal				5,593,214.54
Total Other Uses of Funds				\$5,593,214.54
Total 5100 Debt Service / Other Expenditures and Financing Uses				\$6,630,153.93

LEA : 112676703 Spring Grove Area SD

Printed 11/22/2022 10:49:43 AM

General Fund (10)				
5110 Debt Service	<u>Elementary</u>	<u>Secondary</u>	<u>Federal</u>	<u>Total</u>
800 <u>Other Objects</u>				
830 Interest				782,580.09
Total Other Objects				\$782,580.09
900 <u>Other Uses of Funds</u>				
910 Redemption of Principal				5,562,517.46
Total Other Uses of Funds				\$5,562,517.46
Total 5110 Debt Service				\$6,345,097.55

LEA : 112676703 Spring Grove Area SD

Printed 11/22/2022 10:49:43 AM

General Fund (10)

5130 Refund of Prior Year Revenues / Receipts	<u>Elementary</u>	<u>Secondary</u>	<u>Federal</u>	<u>Total</u>
800 <u>Other Objects</u>				
880 Refunds of Prior Years' Receipts				254,359.30
Total Other Objects				\$254,359.30
Total 5130 Refund of Prior Year Revenues / Receipts				\$254,359.30

LEA : 112676703 Spring Grove Area SD

Printed 11/22/2022 10:49:43 AM

General Fund (10)

5140 Leases	<u>Elementary</u>	<u>Secondary</u>	<u>Federal</u>	<u>Total</u>
900 <u>Other Uses of Funds</u>				
910 Redemption of Principal				30,697.08
Total Other Uses of Funds				\$30,697.08
Total 5140 Leases				\$30,697.08

LEA : 112676703 Spring Grove Area SD

Printed 11/22/2022 10:49:43 AM

General Fund (10)

5200 Interfund Transfers – Out	<u>Elementary</u>	<u>Secondary</u>	<u>Federal</u>	<u>Total</u>
900 <u>Other Uses of Funds</u>				
932 Capital Reserve Fund Transfers Applicable To Fund 32				350,000.00
Total Other Uses of Funds				\$350,000.00
Total 5200 Interfund Transfers – Out				\$350,000.00

LEA : 112676703 Spring Grove Area SD

Printed 11/22/2022 10:49:43 AM

General Fund (10)

5230 Capital Projects Fund Transfers	<u>Elementary</u>	<u>Secondary</u>	<u>Federal</u>	<u>Total</u>
900 <u>Other Uses of Funds</u>				
932 Capital Reserve Fund Transfers Applicable To Fund 32				350,000.00
Total Other Uses of Funds				\$350,000.00
Total 5230 Capital Projects Fund Transfers				\$350,000.00

LEA : 112676703 Spring Grove Area SD

Printed 11/22/2022 10:49:25 AM

Capital Reserve Fund - § 1431 (32)	
2000 Support Services	<u>Total</u>
400 <u>Purchased Property Services</u>	
430 Repairs and Maintenance Services	575,831.07
Total Purchased Property Services	\$575,831.07
700 <u>Property</u>	
762 Capitalized Equipment - Replacement	54,553.65
Total Property	\$54,553.65
Total 2000 Support Services	\$630,384.72

LEA : 112676703 Spring Grove Area SD

Printed 11/22/2022 10:49:25 AM

Capital Reserve Fund - § 1431 (32)

2600 Operation and Maintenance of Plant Services	<u>Elementary</u>	<u>Secondary</u>	<u>Federal</u>	<u>Total</u>
400 <u>Purchased Property Services</u>				
430 Repairs and Maintenance Services				575,831.07
Total Purchased Property Services				\$575,831.07
700 <u>Property</u>				
762 Capitalized Equipment - Replacement			54,553.65	54,553.65
Total Property			\$54,553.65	\$54,553.65
Total 2600 Operation and Maintenance of Plant Services			\$54,553.65	\$630,384.72

LEA : 112676703 Spring Grove Area SD

Printed 11/22/2022 10:49:25 AM

Capital Reserve Fund - § 1431 (32)

2620 Operation of Buildings Services	<u>Elementary</u>	<u>Secondary</u>	<u>Federal</u>	<u>Total</u>
400 <u>Purchased Property Services</u>				
430 Repairs and Maintenance Services				575,831.07
Total Purchased Property Services				\$575,831.07
700 <u>Property</u>				
762 Capitalized Equipment - Replacement			54,553.65	54,553.65
Total Property			\$54,553.65	\$54,553.65
Total 2620 Operation of Buildings Services			\$54,553.65	\$630,384.72

LEA : 112676703 Spring Grove Area SD

Printed 11/22/2022 10:49:50 AM

	<u>General Fund(10)</u>	<u>Student Sponsored Activity Fund(21)</u>	<u>Public Purpose Trust(27)</u>	<u>Other Compt Approved (28)</u>	<u>Athletic / Activity(29)</u>
1000 <u>Instruction</u>					
1100 Regular Programs - Elementary / Secondary	31,779,632.00				
1200 Special Programs - Elementary / Secondary	11,699,925.14				
1300 Vocational Education	1,634,931.58				
1400 Other Instructional Programs - Elementary / Secondary	320,630.79				
1800 Pre-Kindergarten	34,422.80				
Total Instruction	\$45,469,542.31				
2000 <u>Support Services</u>					
2100 Support Services - Students	2,719,503.29				
2200 Support Services - Instructional Staff	5,613,633.44				
2300 Support Services - Administration	4,019,359.07				
2400 Support Services - Pupil Health	790,909.34				
2500 Support Services - Business	498,748.41				
2600 Operation and Maintenance of Plant Services	7,271,804.91				
2700 Student Transportation Services	5,381,371.73				
2800 Support Services - Central	715,423.23				
2900 Other Support Services	5,872.84				
Total Support Services	\$27,016,626.26				
3000 <u>Operation of Non-Instructional Services</u>					
3200 Student Activities	1,279,207.43				
3300 Community Services	44,386.24				
Total Operation of Non-Instructional Services	\$1,323,593.67				
5000 <u>Other Expenditures and Financing Uses</u>					
5100 Debt Service / Other Expenditures and Financing Uses	6,630,153.93				
5200 Interfund Transfers - Out	350,000.00				
Total Other Expenditures and Financing Uses	\$6,980,153.93				
TOTAL ACTUAL EXPENDITURES & OTHER FINANCING USES	\$80,789,916.17				

LEA : 112676703 Spring Grove Area SD

Printed 11/22/2022 10:49:50 AM

	<u>Capital Reserve (690.1850)(31)</u>	<u>Capital Reserve (1431)(32)</u>	<u>Other Capital Projects Fund(39)</u>	<u>Debt Service(40)</u>	<u>Permanent(90)</u>
1000 <u>Instruction</u>					
1100 Regular Programs - Elementary / Secondary					
1200 Special Programs - Elementary / Secondary					
1300 Vocational Education					
1400 Other Instructional Programs - Elementary / Secondary					
1800 Pre-Kindergarten					
Total Instruction					
2000 <u>Support Services</u>					
2100 Support Services - Students					
2200 Support Services - Instructional Staff					
2300 Support Services - Administration					
2400 Support Services - Pupil Health					
2500 Support Services - Business					
2600 Operation and Maintenance of Plant Services			630,384.72		
2700 Student Transportation Services					
2800 Support Services - Central					
2900 Other Support Services					
Total Support Services			\$630,384.72		
3000 <u>Operation of Non-Instructional Services</u>					
3200 Student Activities					
3300 Community Services					
Total Operation of Non-Instructional Services					
5000 <u>Other Expenditures and Financing Uses</u>					
5100 Debt Service / Other Expenditures and Financing Uses					
5200 Interfund Transfers - Out					
Total Other Expenditures and Financing Uses					
TOTAL ACTUAL EXPENDITURES & OTHER FINANCING USES			\$630,384.72		

	<u>Total</u>
1000 <u>Instruction</u>	
1100 Regular Programs - Elementary / Secondary	31,779,632.00
1200 Special Programs - Elementary / Secondary	11,699,925.14
1300 Vocational Education	1,634,931.58
1400 Other Instructional Programs - Elementary / Secondary	320,630.79
1800 Pre-Kindergarten	34,422.80
Total Instruction	\$45,469,542.31
2000 <u>Support Services</u>	
2100 Support Services - Students	2,719,503.29
2200 Support Services - Instructional Staff	5,613,633.44
2300 Support Services - Administration	4,019,359.07
2400 Support Services - Pupil Health	790,909.34
2500 Support Services - Business	498,748.41
2600 Operation and Maintenance of Plant Services	7,902,189.63
2700 Student Transportation Services	5,381,371.73
2800 Support Services - Central	715,423.23
2900 Other Support Services	5,872.84
Total Support Services	\$27,647,010.98
3000 <u>Operation of Non-Instructional Services</u>	
3200 Student Activities	1,279,207.43
3300 Community Services	44,386.24
Total Operation of Non-Instructional Services	\$1,323,593.67
5000 <u>Other Expenditures and Financing Uses</u>	
5100 Debt Service / Other Expenditures and Financing Uses	6,630,153.93
5200 Interfund Transfers - Out	350,000.00
Total Other Expenditures and Financing Uses	\$6,980,153.93
TOTAL ACTUAL EXPENDITURES & OTHER FINANCING USES	\$81,420,300.89

LEA : 112676703 Spring Grove Area SD

Printed 11/22/2022 10:50:02 AM

PSERS Salary Data (Salary Data should relate to the General Fund only)

Amount	Description	Amount
	Total Salary Base for salaries subject to PSERS withholding	29,970,980.76
	Total Federally Funded salaries subject to PSERS withholding	401,172.54

Title I Expenditure Data

Amount	Description	Amount
	Expenditures Funded with Current Title I Funds	574,874.00
	Expenditures Funded with Carry over Title I Funds	
Total	Title I Expenditure Data	\$574,874.00

Title IV Revenue Data

Amount	Description	Amount
	Revenue from Title IV-A-1: Student Support and Academic Enrichment Grants	36,794.00
	Revenue from Title IV-B: 21st Century Community Learning Centers	

Title V Revenue Data

Amount	Description	Amount
	Revenue from Title V-B-2: Rural and Low-Income School Programs	
	Revenue from Title V-B-1: Small Rural School Achievement (Directly from the Federal Govt)	

1 . <u>Current Special Education Expenditures within Function 1000.\r\nSee list of exclusions in the note below.</u>	6,483,105.53
2 . <u>Current Special Education Expenditures within Function 2000.\r\nSee list of exclusions in the note below.</u>	4,347,542.60
3 . <u>Current Special Education Expenditures within Sub-Function 2100.\r\nThis data should also be included in line 2 above.\r\nSee list of exclusions in the note below.</u>	462,315.56
4 . <u>Current Special Education Expenditures within Sub-Function 2200.\r\nThis data should also be included in line 2 above.\r\nSee list of exclusions in the note below.</u>	782,191.88
5 . <u>Current Special Education Expenditures within Sub-Function 2700.\r\nThis data should also be included in line 2 above.\r\nSee list of exclusions in the note below.</u>	139,832.23
6 . <u>Current Special Education Expenditures within Sub-Function 3100.\r\nSee list of exclusions in the note below.</u>	
7 . <u>Current Special Education Expenditures within Sub-Function 3200.\r\nSee list of exclusions in the note below.</u>	209,114.36

Note: The Current Special Education Expenditure amounts for each line should be calculated as follows:

- * Include the total expenditures for special education costs from all funds for the function/sub-function requested
- * Exclude data from sub-functions: 1243,1450,1500,1600,1807,2280,2450,2750,2990
- * Exclude data from objects: 322,511,512,516,561,562,564,566,592,593,594,595,596,597,700,830,899

Benefits for Staff Relative to Collective Bargaining Agreements

	OBJECT	COVERED	NOT COVERED	TOTAL
10 General Fund				
	211 Medical Insurance			
	212 Dental Insurance			
	215 Eye Care Insurance			
	216 Prescription Insurance			
	271 Self-Insurance Medical Benefits	3,229,732.73	2,492,511.13	5,722,243.86
	272 Self-Insurance Dental Benefits	156,804.67	121,012.30	277,816.97
	275 Self-Insurance Eye Care Benefits	1,780.45	1,374.05	3,154.50
	276 Self-Insurance Prescription Benefits			
	FUND TOTAL	\$3,388,317.85	\$2,614,897.48	\$6,003,215.33
50 Enterprise Fund				
	211 Medical Insurance			
	212 Dental Insurance			
	215 Eye Care Insurance			
	216 Prescription Insurance			
	271 Self-Insurance Medical Benefits		206,746.18	206,746.18
	272 Self-Insurance Dental Benefits		10,413.00	10,413.00
	275 Self-Insurance Eye Care Benefits		128.70	128.70
	276 Self-Insurance Prescription Benefits			
	FUND TOTAL		\$217,287.88	\$217,287.88
60 Internal Service Fund	No Self Insurance data to report			
	211 Medical Insurance			
	212 Dental Insurance			
	215 Eye Care Insurance			
	216 Prescription Insurance			
	271 Self-Insurance Medical Benefits			
	272 Self-Insurance Dental Benefits			
	275 Self-Insurance Eye Care Benefits			
	276 Self-Insurance Prescription Benefits			
	FUND TOTAL			
Total of All Funds		\$3,388,317.85	\$2,832,185.36	\$6,220,503.21

LEA : 112676703 Spring Grove Area SD

Printed 11/22/2022 10:50:15 AM

Function	Special Education (Prior Year)	Nonspecial Education (Prior Year)	Total (Prior Year)	Special Education (Current Year)	Nonspecial Education (Current Year)	Total (Current Year)
2120 Guidance Services	258,051.55	1,259,898.72	1,517,950.27	272,644.26	1,331,243.15	1,603,887.41
2140 Psychological Services	74,898.33	365,680.11	440,578.44	85,151.52	415,739.79	500,891.31
2150 Speech Pathology and Audiology Services						
2160 Social Work Services	26,682.78	130,274.75	156,957.53	33,437.07	163,251.55	196,688.62
2260 Instruction and Curriculum Development Services	105,959.06	517,329.50	623,288.56	100,633.23	491,473.43	592,106.66
2350 Legal and Accounting Services	2,938.50	93,166.12	96,104.62	2,195.50	84,362.03	86,557.53
2420 Medical Services	136,134.82	664,658.23	800,793.05	134,140.94	654,923.39	789,064.33
2440 Nursing Services						
2700 Student Transportation Services	578,228.63	2,823,116.26	3,401,344.89	349,144.27	5,032,227.46	5,381,371.73
Total	\$1,182,893.67	\$5,854,123.69	\$7,037,017.36	\$977,346.79	\$8,173,220.80	\$9,150,567.59

LEA : 112676703 Spring Grove Area SD

Printed 11/22/2022 10:50:20 AM

(PRINCIPAL AMOUNTS ONLY)

GOVERNMENTAL FUNDS/ ACTIVITIES

	Short-Term Borrowing	General Obligation Bonds/Notes	Authority Building Obligations	OLTD, Ext Term Fin, Leases	Other Post- Employment Benefits (OPEB)	Compensated Absences	Net Pension Liability	Total
1. Debt at Beginning of Fiscal Year		50,209,000.00		50,640.00	9,647,059.00	606,027.00	103,156,000.00	163,668,726.00
2. Additional Debt Incurred During Year					632,817.00			632,817.00
3. Retirements and Repayments		5,395,000.00		30,697.00		160,482.00	16,608,000.00	22,194,179.00
4. Debt at End of Fiscal Year		44,814,000.00		19,943.00	10,279,876.00	445,545.00	86,548,000.00	142,107,364.00
5. Accreted Interest at End Of Fiscal Year								
6. Total Debt and Accreted Interest		44,814,000.00		19,943.00	10,279,876.00	445,545.00	86,548,000.00	142,107,364.00
7. Current Portion P&I - Due within 1 year		6,406,290.00		16,032.00				6,422,322.00
8. Interest Paid during current fiscal year		749,237.00						749,237.00

(PRINCIPAL AMOUNTS ONLY)

PROPRIETARY FUNDS

	Short-Term Borrowing	General Obligation Bonds/Notes	Authority Building Obligations	OLTD, Ext Term Fin, Leases	Other Post- Employment Benefits (OPEB)	Compensated Absences	Net Pension Liability	Total
1. Debt at Beginning of Fiscal Year						31,242.50		31,242.50
2. Additional Debt Incurred During Year								
3. Retirements and Repayments						9,302.50		9,302.50
4. Debt at End of Fiscal Year						21,940.00		21,940.00
5. Accreted Interest at End Of Fiscal Year								
6. Total Debt and Accreted Interest						21,940.00		21,940.00
7. Current Portion P&I - Due within 1 year								
8. Interest Paid during current fiscal year								

LEA : 112676703 Spring Grove Area SD

Total Principal and Interest Payments Made by Your School - All Funds

Function	Fund		Principal (910)	Principal (920)	Interest (830)	Total (Principal +Interest)	Misc Other Uses (990)
5110	10	General Fund	5,562,517.46		782,580.09	6,345,097.55	
5110	20	Special Revenue Funds					
5110	30	Capital Projects Funds					
5110	40	Debt Service Fund					
5110	90	Permanent Fund					
5120	10	General Fund					
5120	20	Special Revenue Funds					
5120	30	Capital Projects Funds					
5120	40	Debt Service Fund					
5140	10	General Fund	30,697.08			30,697.08	
5140	20	Special Revenue Funds					
5140	30	Capital Projects Funds					
5140	40	Debt Service Fund					
5140	90	Permanent Fund					
Total Debt Payments - Governmental Funds			\$5,593,214.54		\$782,580.09	\$6,375,794.63	

Function	Fund		Principal (910)	Principal (920)	Interest (830)	Total (Principal +Interest)
5110	50	Enterprise Fund				
5110	60	Internal Service Fund				
5120	50	Enterprise Fund				
5120	60	Internal Service Fund				
5140	50	Enterprise Fund				
5140	60	Internal Service Fund				

Total Debt Payments - Proprietary Funds		
-----------------------------------------	--	--

LEA : 112676703 Spring Grove Area SD

Printed 11/22/2022 10:50:20 AM

Debt Details
Governmental Funds/ Activities

Debt Category	Debt Issue Date (MM/YYYY)	Principal Amounts Only				Current Portion Due Within One Year (Principal and Interest)	Interest Paid During Fiscal Year
		Debt at Beginning of Fiscal Year	Additions	Reductions / Repayments	Debt at End of Fiscal Year		
General Obligation Bonds/Notes – CIB	11/2020	6,605,000.00		667,000.00	5,938,000.00	722,332.00	60,436.00
General Obligation Bonds/Notes – CIB	11/2020	4,449,000.00		2,037,000.00	2,412,000.00	2,097,832.00	17,152.00
General Obligation Bonds/Notes – CIB	11/2020	5,780,000.00		1,151,000.00	4,629,000.00	1,189,652.00	48,263.00
General Obligation Bonds/Notes – CIB	11/2020	20,970,000.00			20,970,000.00	455,164.00	246,397.00
General Obligation Bonds/Notes – CIB	07/2018	9,505,000.00		135,000.00	9,370,000.00	413,885.00	277,014.00
General Obligation Bonds/Notes – CIB	01/2015	2,900,000.00		1,405,000.00	1,495,000.00	1,527,425.00	99,975.00
Compensated Absences		606,027.00		160,482.00	445,545.00		
Other Post-Employment Benefits (OPEB)		9,647,059.00	632,817.00		10,279,876.00		
Net Pension Liability		103,156,000.00		16,608,000.00	86,548,000.00		
Leases		50,640.00		30,697.00	19,943.00	16,032.00	
Totals for Debt Entered:		\$163,668,726.00	\$632,817.00	\$22,194,179.00	\$142,107,364.00	\$6,422,322.00	\$749,237.00

Bond Details
Proprietary Funds

Debt Category	Debt Issue Date (MM/YYYY)	Principal Amounts Only				Current Portion Due Within One Year (Principal and Interest)	Interest Paid During Fiscal Year
		Debt at Beginning of Fiscal Year	Additions	Reductions / Repayments	Debt at End of Fiscal Year		
Compensated Absences		31,242.50		9,302.50	21,940.00		
Totals for Debt Entered:		\$31,242.50		\$9,302.50	\$21,940.00		

LEA : 112676703 Spring Grove Area SD

General Fund (10)

Section 1: Tuition/Purchased Services as Reported within Expenditure Detail	Amount
Tuition Reported in General Fund Expenditures 1000-560	5,343,688.12
Purchased Services in General Fund Expenditures 1000-594 and 1000-597	789.79
Section 1 Total	\$5,344,477.91

Section 2: Tuition Paid to Institution Types During Fiscal Year	Tuition Paid For Nonspecial Education	Tuition Paid For Special Education	Total
1 1306 Institutions			
2 Institutionalized Children's Programs		789.79	789.79
3 Juveniles Incarcerated in Adult Facilities			
4 Residential Treatment Facilities			
5 Other Local Education Agencies	85,417.39	339,678.67	425,096.06
6 Brick and Mortar Charter Schools	200,789.97	118,530.60	319,320.57
7 Cyber Charter Schools	1,572,196.98	702,335.99	2,274,532.97
8 Career and Technology Centers	1,448,074.59	93,248.03	1,541,322.62
9 Approved Private Schools		114,434.33	114,434.33
10 PA Chartered Schools for the Deaf and Blind			
11 Private Residential Rehabilitative Institutions			
12 Juvenile Detention Centers			
13 Special Program Jointures			
14 Other Tuition Not Included Elsewhere In This Section	307,202.63	361,778.94	668,981.57
Section 2 Total	\$3,613,681.56	\$1,730,796.35	\$5,344,477.91

LEA : 112676703 Spring Grove Area SD

Printed 11/22/2022 10:50:28 AM

Food Service / Cafeteria Operations Fund (51)

3000 Operation of Non-Instructional Services		Total
100 <u>Personnel Services – Salaries</u>		
100 Personnel Services – Salaries		693,424.61
Total Personnel Services – Salaries		\$693,424.61
200 <u>Personnel Services – Employee Benefits</u>		
210 Group Insurance – Contracted Provider		310.88
220 Social Security Contributions		50,207.15
230 PSERS Retirement Contributions		241,504.74
250 Unemployment Compensation		14,883.21
260 Workers' Compensation		5,675.78
270 Group Insurance – Self-Insurance		219,158.26
Total Personnel Services – Employee Benefits		\$531,740.02
300 <u>Purchased Professional and Technical Services</u>		
340 Technical Services		9,435.56
Total Purchased Professional and Technical Services		\$9,435.56
400 <u>Purchased Property Services</u>		
430 Repairs and Maintenance Services		19,956.31
Total Purchased Property Services		\$19,956.31
500 <u>Other Purchased Services</u>		
570 Food Service Management		11,737.44
580 Travel		3,174.39
Total Other Purchased Services		\$14,911.83
600 <u>Supplies</u>		
610 General Supplies		135,024.39
630 Food		1,269,012.17
Total Supplies		\$1,404,036.56
700 <u>Property</u>		
740 Depreciation		3,609.80
Total Property		\$3,609.80
800 <u>Other Objects</u>		
810 Dues and Fees		7,005.10
Total Other Objects		\$7,005.10
Total 3000 Operation of Non-Instructional Services		\$2,684,119.79

LEA : 112676703 Spring Grove Area SD

Printed 11/22/2022 10:50:28 AM

Food Service / Cafeteria Operations Fund (51)

3100 Food Services	Elementary	Secondary	Federal	Total
100 <u>Personnel Services – Salaries</u>				
100 Personnel Services – Salaries			693,424.61	693,424.61
Total Personnel Services – Salaries			\$693,424.61	\$693,424.61
200 <u>Personnel Services – Employee Benefits</u>				
210 Group Insurance – Contracted Provider			310.88	310.88
220 Social Security Contributions			50,207.15	50,207.15
230 PSERS Retirement Contributions			241,504.74	241,504.74
250 Unemployment Compensation			14,883.21	14,883.21
260 Workers' Compensation			5,675.78	5,675.78
270 Group Insurance – Self-Insurance			219,158.26	219,158.26
Total Personnel Services – Employee Benefits			\$531,740.02	\$531,740.02
300 <u>Purchased Professional and Technical Services</u>				
340 Technical Services			9,435.56	9,435.56
Total Purchased Professional and Technical Services			\$9,435.56	\$9,435.56
400 <u>Purchased Property Services</u>				
430 Repairs and Maintenance Services			19,956.31	19,956.31
Total Purchased Property Services			\$19,956.31	\$19,956.31
500 <u>Other Purchased Services</u>				
570 Food Service Management			11,737.44	11,737.44
580 Travel			3,174.39	3,174.39
Total Other Purchased Services			\$14,911.83	\$14,911.83
600 <u>Supplies</u>				
610 General Supplies			135,024.39	135,024.39
630 Food			1,269,012.17	1,269,012.17
Total Supplies			\$1,404,036.56	\$1,404,036.56
700 <u>Property</u>				
740 Depreciation			3,609.80	3,609.80
Total Property			\$3,609.80	\$3,609.80
800 <u>Other Objects</u>				
810 Dues and Fees			7,005.10	7,005.10
Total Other Objects			\$7,005.10	\$7,005.10
Total 3100 Food Services			\$2,684,119.79	\$2,684,119.79

	<u>Food Service(51)</u>	<u>Child Care Operations(52)</u>	<u>Other Enterprise(58)</u>	<u>Internal Service(60)</u>	<u>Total</u>
3000 <u>Operation of Non-Instructional Services</u>					
3100 Food Services	2,684,119.79				2,684,119.79
Total Operation of Non-Instructional Services	\$2,684,119.79				\$2,684,119.79
TOTAL ACTUAL EXPENDITURES & OTHER FINANCING USES	\$2,684,119.79				\$2,684,119.79

LEA : 112676703 Spring Grove Area SD

Printed 11/22/2022 10:50:42 AM

Fund	School	School Number	Local Personnel	Local Nonpersonnel	State Personnel	State Nonpersonnel	Federal Personnel	Federal Nonpersonnel	Total	Explanation
10										
	New Salem El Sch	4617	3,045,910.78	713,470.33	1,868,908.25	384,820.04	376,196.77	183,125.03	6,572,431.20	
	Paradise El Sch	4620	2,923,697.85	637,823.73	1,752,467.48	344,019.00	368,891.54	334,704.00	6,361,603.60	
	Spring Grove Area HS	4623	9,925,618.11	2,691,866.84	5,416,853.93	1,451,895.40	822,424.65	501,553.93	20,810,212.86	
	Spring Grove Area Intrmd Sch	4622	4,586,269.20	1,007,737.86	2,456,548.44	543,537.28	372,125.68	450,869.05	9,417,087.51	
	Spring Grove Area MS	6725	5,238,788.93	1,203,570.61	2,860,080.22	649,162.36	433,173.03	231,835.48	10,616,610.63	
	Spring Grove El Sch	4618	4,843,185.62	1,123,597.79	3,065,154.73	606,027.92	607,358.09	355,784.95	10,601,109.10	
Total			30,563,470.49	7,378,067.16	17,420,013.05	3,979,462.00	2,980,169.76	2,057,872.44	64,379,054.90	