

**Ridge View Elementary**

Report Number: 42  
Average Temperature: 67°F  
Week's Precipitation: 0.00 in  
Average Wind speed: 5 mph

**Project Team**

**Owner**

**Kennewick School District**  
1000 W Fourth Ave.  
Kennewick, WA 99336

Ryan Jones  
*Owner*

**Architect**

**Design West Architects**  
830 N Columbia Center Blvd  
Suite E  
Kennewick, WA 99336

Mike Weber  
*Architect*

**General Contractor**

**Chervenell Construction**

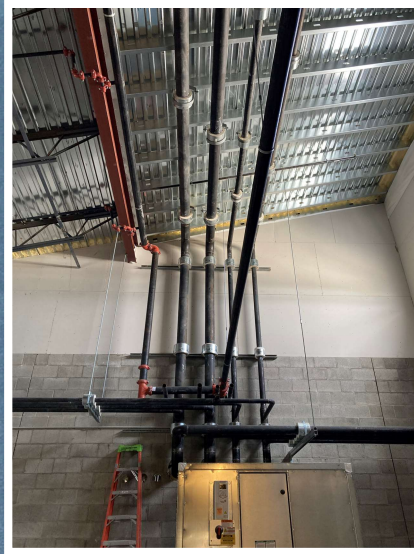
107422 E Detrick PR SE  
Kennewick, WA 99338

PH: 509.735.3377  
[www.chervenell.com](http://www.chervenell.com)

Paul Hamada  
*Project Manager*

Jennifer Pick  
*Project Engineer*

Robert Palmer  
*Superintendent*



**2<sup>nd</sup> Mezz Hydronic & FS Piping**



**3<sup>rd</sup> Mezz Conduit Connections**



**2<sup>nd</sup> Mezz Units Set**



**2<sup>nd</sup> Mezz Units Set 2**



**Classroom Painting Continues**



**Type B Metal Wall Panels at South Exterior**