

2016 Landscape Management Plan

2015-16 Community Based Research Class

Recap



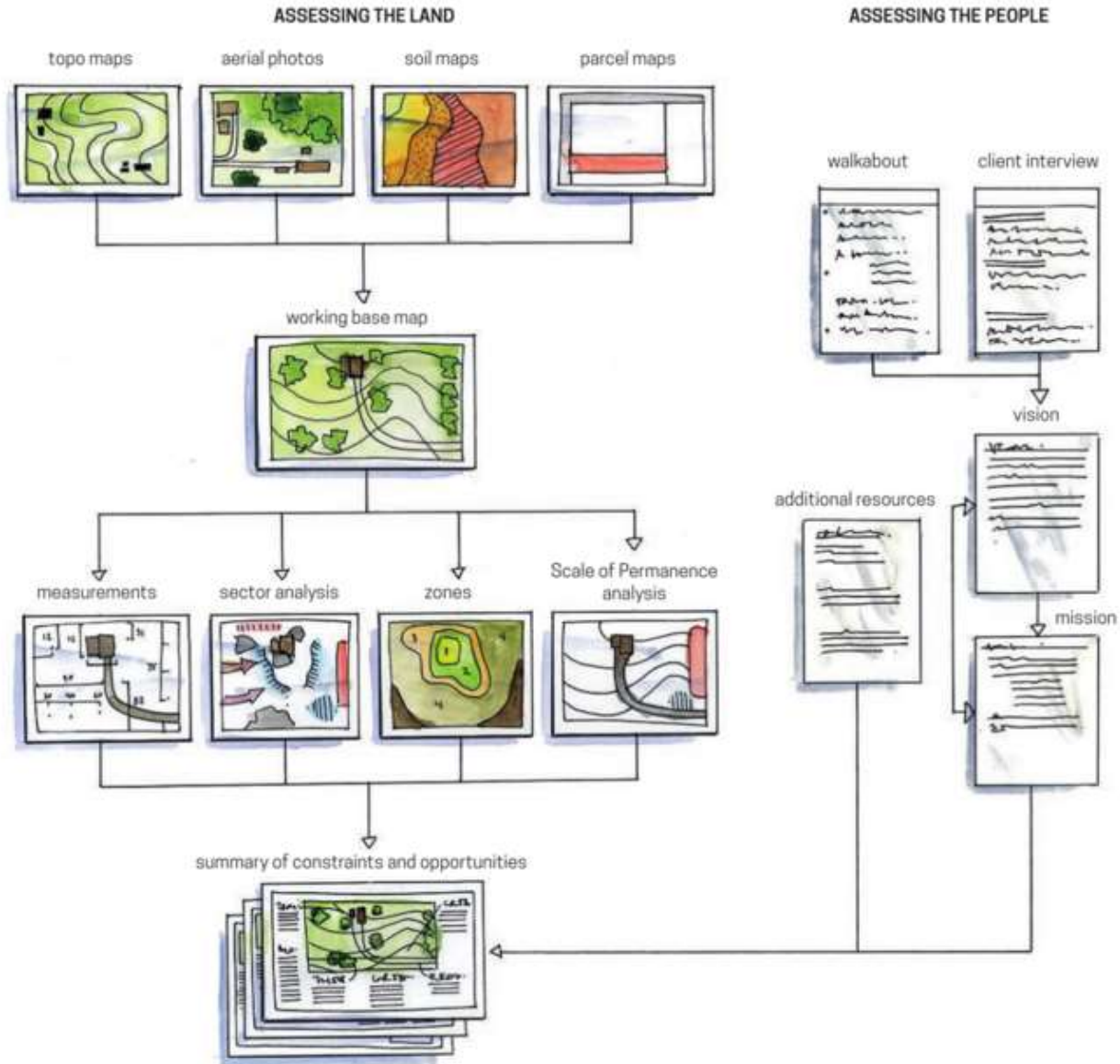
Goals

- Mission Statement
- Strategic Themes
- Philosophy



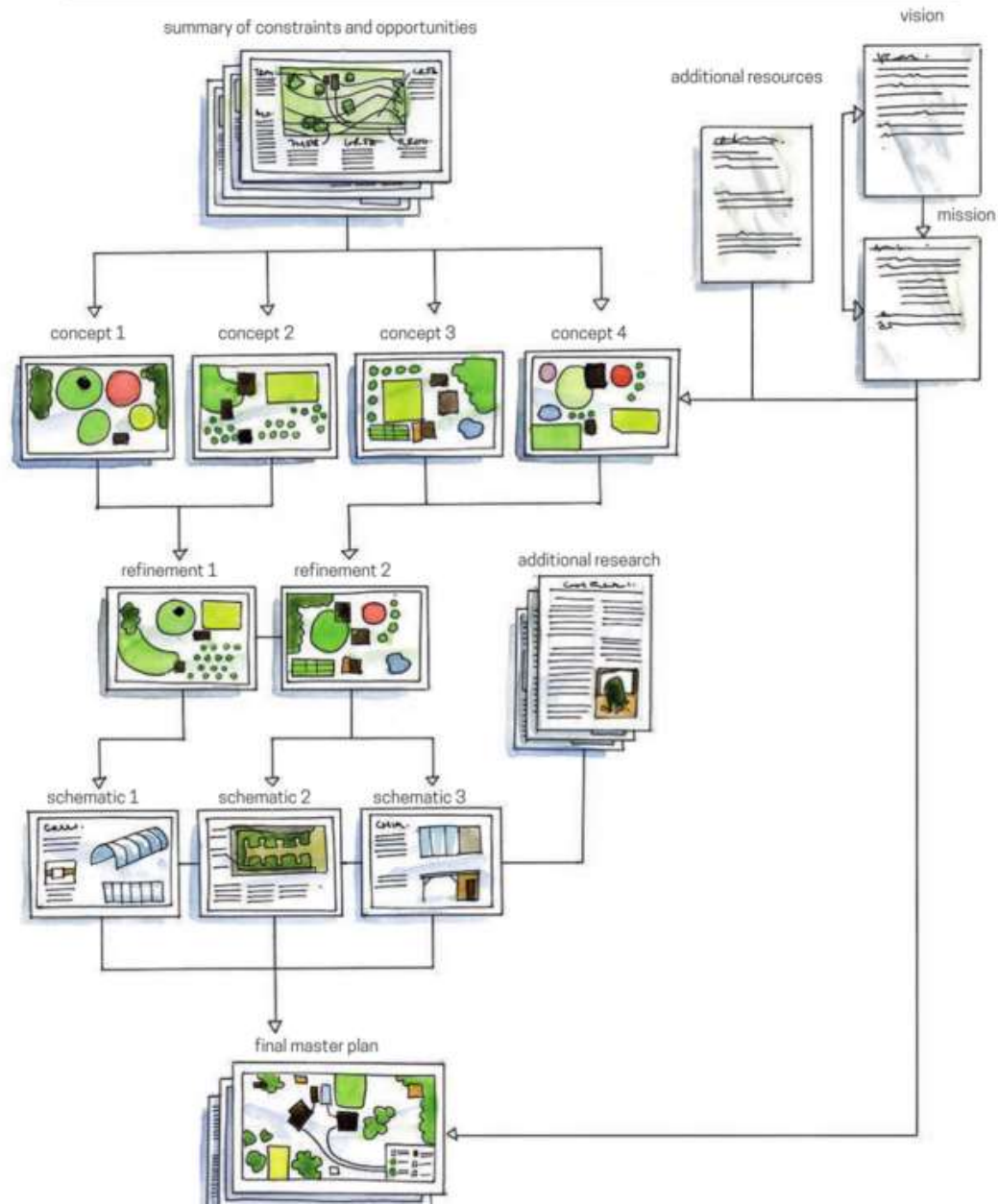
Methods

DESIGN PROCESS, PART 1: GATHERING INFORMATION



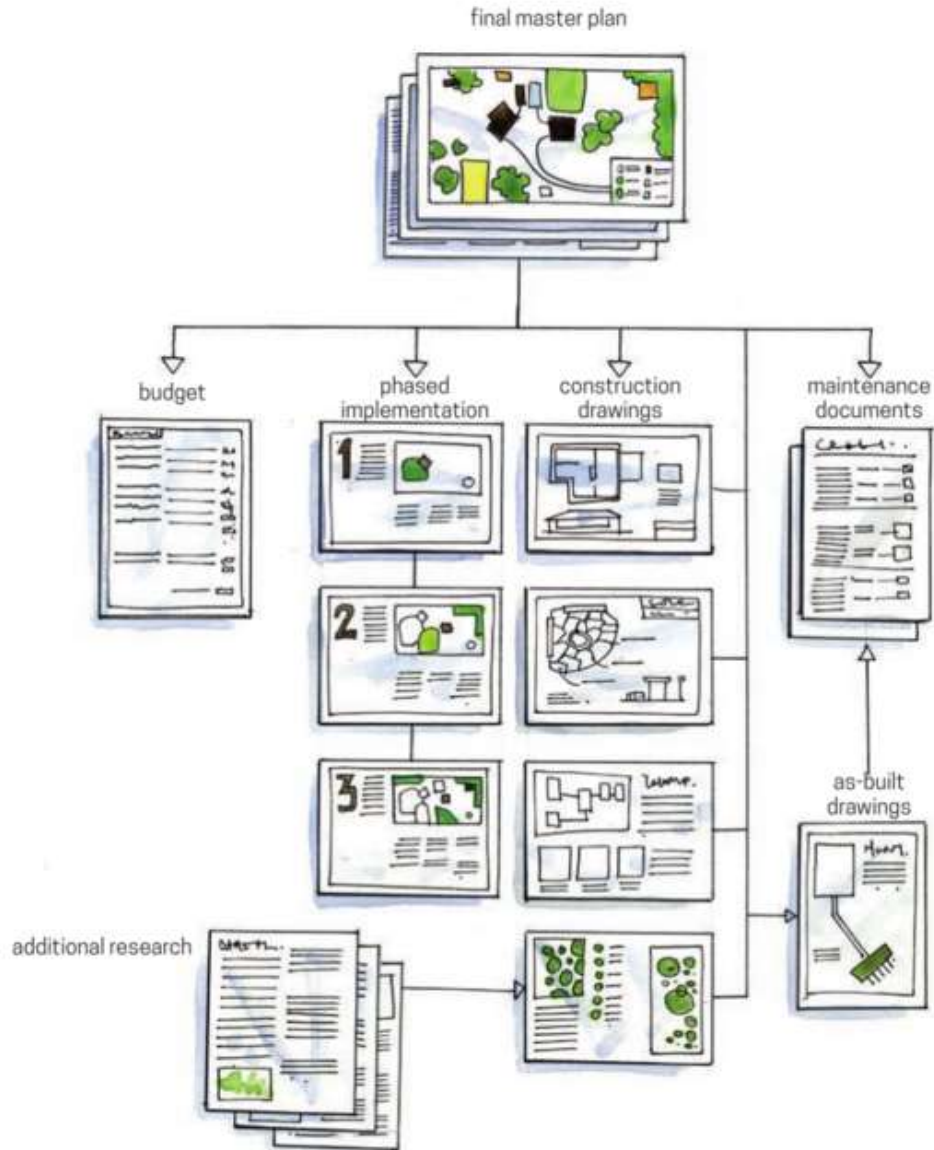
Methods

DESIGN PROCESS, PART 2: PUTTING THE DESIGN TOGETHER



Methods

DESIGN PROCESS, PART 3: FIGURING OUT THE DETAILS



Colby-Sawyer's Values

Philosophy Statement: "...sustaining a dynamic, challenging, supportive, and respectful environment for all campus community members."

Mission Statement: Educational Programs that, "...prepare students for their professions and lives of ongoing learning."

Mission Statement: Colby-Sawyer, "...provides a stimulating setting in which close faculty, staff, and student relationships facilitate student learning and growth."

Colby-Sawyer's Values



Goals Articulation

The Colby-Sawyer campus is a **sustainable living laboratory** and it provides engaging, interdisciplinary educational opportunities for students and visitors alike. The landscape promotes personal responsibility and **efficient use of resources**. It is aesthetically pleasing, economically viable, and ecologically sound. Spaces encourage the community to interact with the environment and with each other. The landscape is **flexible and resilient**—it fosters innovative ideas and adapts to external, temporal, and cultural changes.

Design Principles



SENSE OF PLACE



EDUCATION



SUSTAINABILITY

SENSE OF PLACE



Traditional
Front Loop



Kelsey Forest

EDUCATION



Sue's Sugar
House



Outdoor
Classroom

SUSTAINABILITY



Solar Panels on
Ivey Science
Center



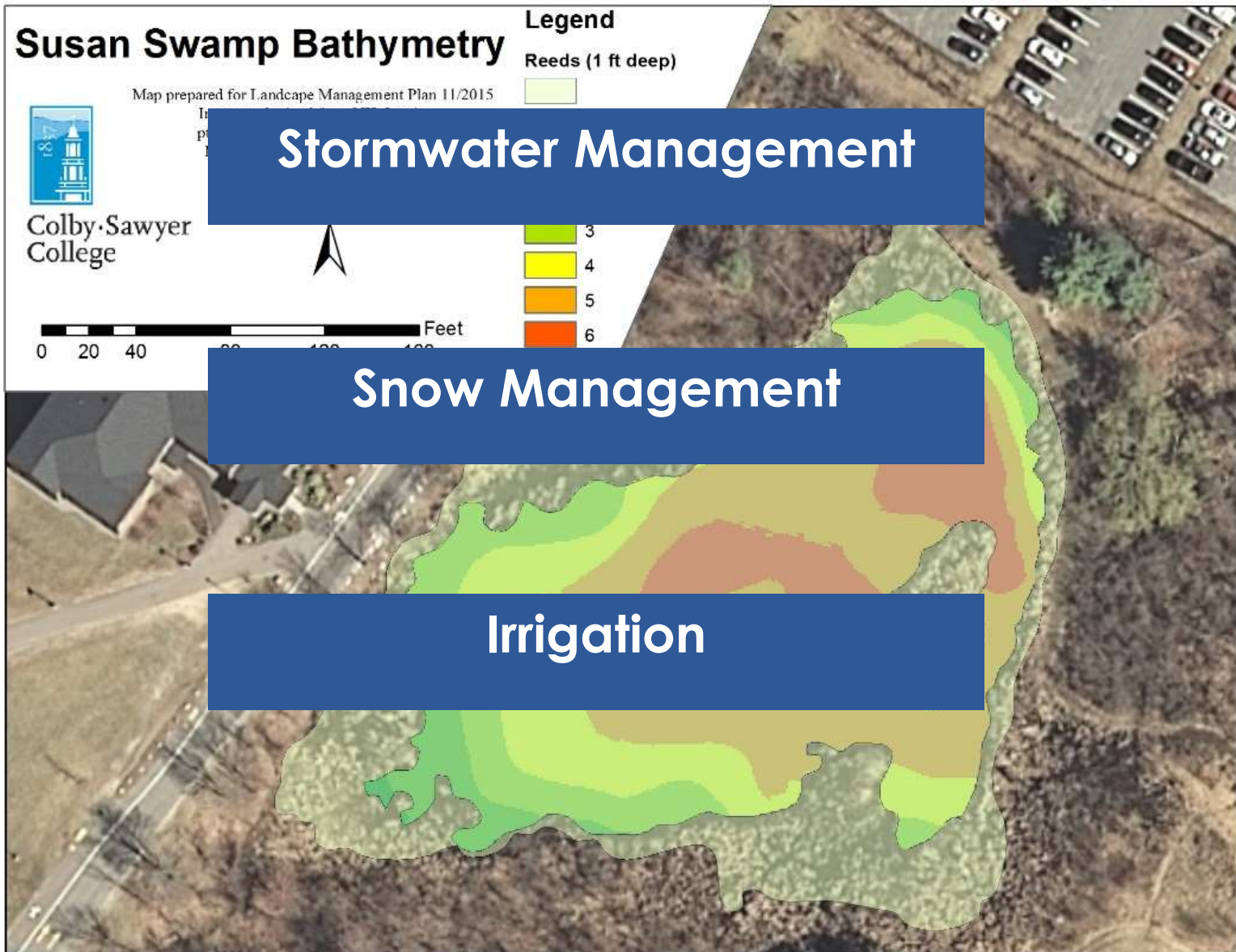
Permaculture
Garden

General Practices

Colby-Sawyer Planting Palette

	Common Name	Scientific Name	NH Native	Height	Shape	Shade Tolerance	Salt Tolerance	Moisture	Comments
	Water in the Landscape								
	Sugar Maple								
	Red Maple	<i>Acer rubrum</i>	Yes	60-75'	Round	Full Sun to		Medium/	Brilliant red foliage
	Landscape Maintenance								
	Silver Maple								Shape w/ Low branches
	White Ash	<i>Fraxinus americana</i>							to Emerald Ash-Borer
	Northern Red Oak				Round/				
	Invasive Species								
	White Oak								
Large Trees (Over 45 ft)	Black Oak	<i>Quercus velutina</i>	Yes	50-80'	Oval	Full Sun		Dry	
	Seating and Lighting								
	Scarlet Oak								g branches
	Shagbark Hickory								nut-bearing
	White (Paper) Birch	<i>Betula papyrifera</i>	Yes	50-70'	Irregular	Full sun		Medium/ Wet	White trunks
	Traffic and Roads								
	River Birch								ark, some smaller
	Black Locust								an pods, nitrogen fixer
	Tulip Poplar	<i>Liriodendron tulipifera</i>	US	70-90'	Oval	Full Sun		Medium	Grows tall with long trunk

Water in the Landscape



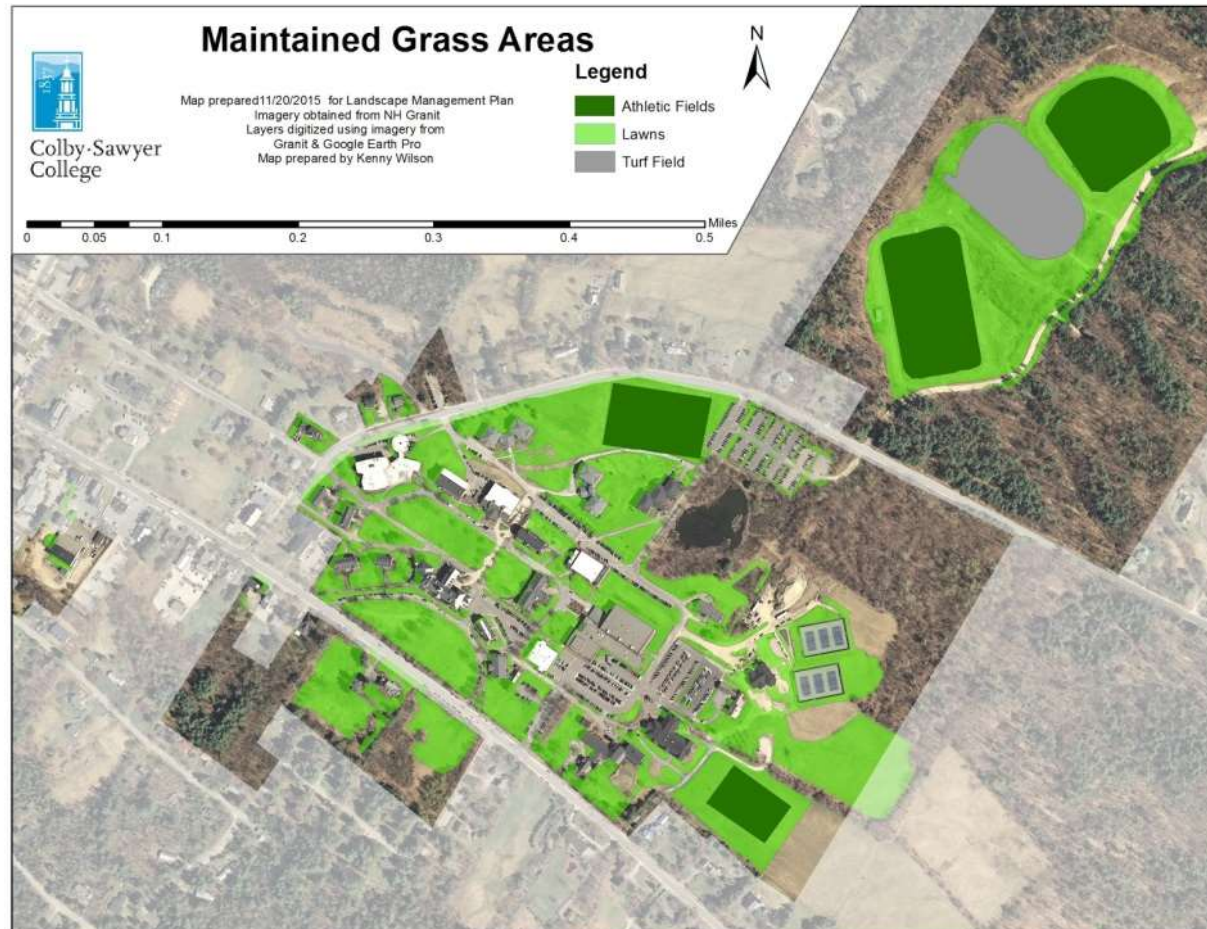
Stormwater Management



Rendered By Nicholas Dibble

Landscape Management

Lawn Maintenance



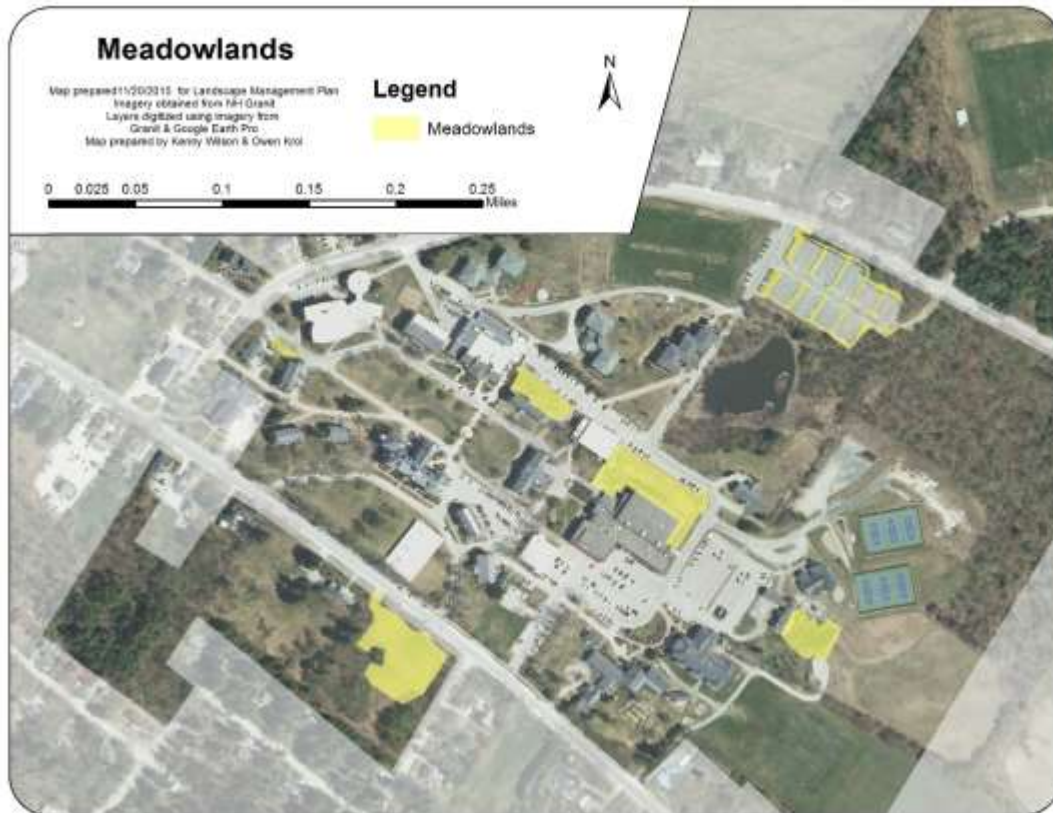
Landscape Management

Meadowland Conversion



Landscape Management

Flowerbed Maintenance



Bark Mulch



Leaf Litter

Lighting

Existing Lighting



0 0.05 0.1 0.2 Miles

Map prepared for 2016 Landscape Management Plan
Imagery obtained from NH Granit.

Map prepared by Owen Krol

Lighting Type

- Downward-Facing LED
- Fluorescent
- High Pressure Sodium



Seating

Wooden Benches
Existing Seating



Wooden Tables

Granite Benches



Miles
0.2

Managing Invasive Species



Paved Surfaces and Traffic Patterns



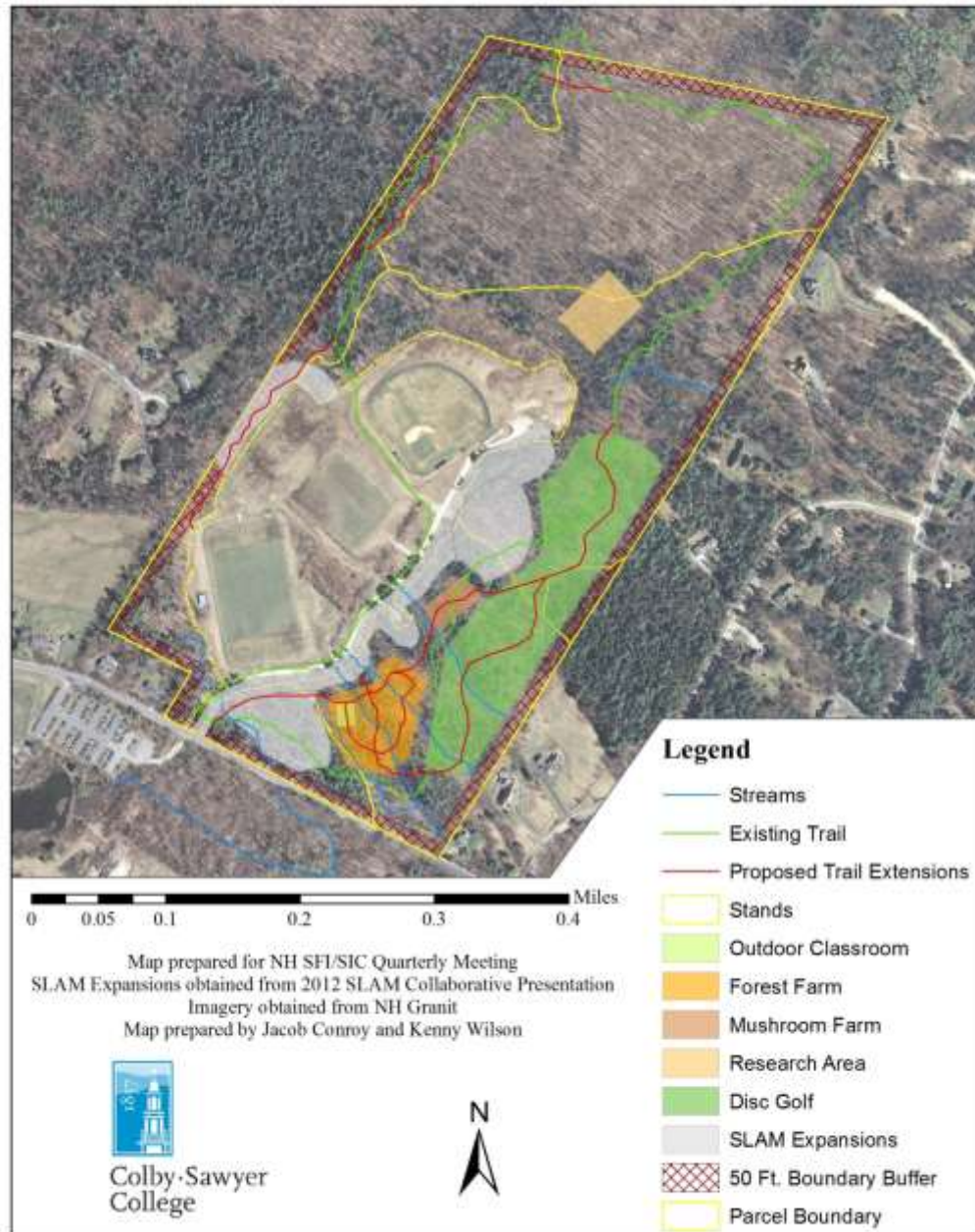
ansion



Proposed Expansion



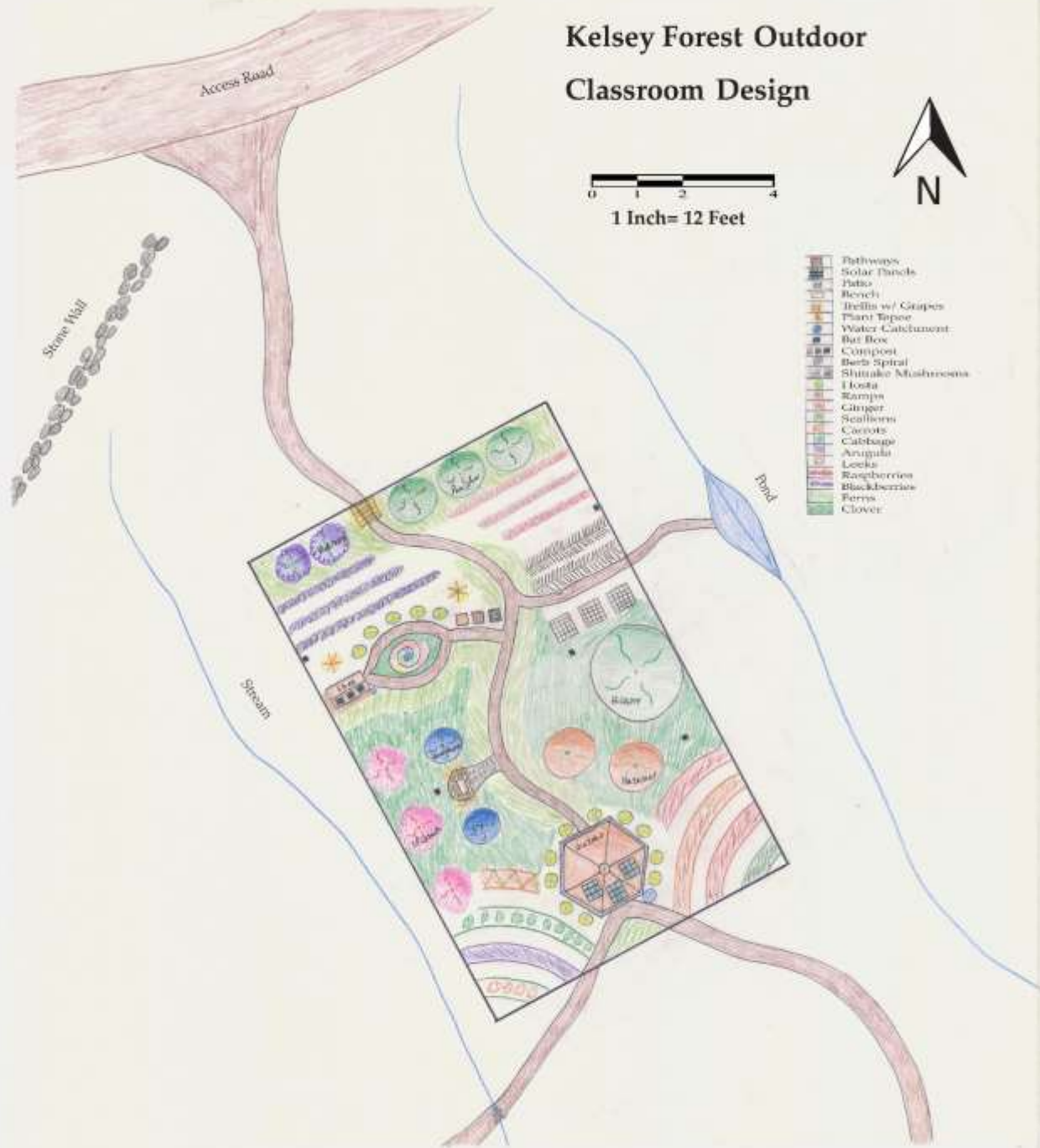
Kelsey Forest Educational Expansions



Kelsey Forest Outdoor Classroom Design



1 Inch = 12 Feet



- Pathways
- Solar Panels
- Patio
- Bench
- Drills w/ Goggles
- Plant Table
- Water Catchment
- Bat Box
- Compost
- Herb Spiral
- Shiitake Mushrooms
- Hosta
- Ramp
- Ginger
- Seashells
- Carrots
- Cabbage
- Arugula
- Leeks
- Raspberries
- Blackberries
- Ferns
- Clover



Design Areas



Windy Hill

Parking

Fine and Performing Arts Center

Green House

Green House

New Access Road

Shed

Barn

High Tunnel

Shed



Farm Design

-  Forest
-  Crops on Contour
-  Fence
-  Large Fruit Trees
-  Small Fruit Trees
-  Strawberries





Gateway

Kelsey Forest

Dining Hall Entrance

Danforth and Lawson

Susan Swamp

Hogan Hill

Lodge

Parking Expansion

Gateway

New Quad

Arts Building

Farm

Design Areas

Designs



Rendered By Evan Dalton

Danforth/Lawson Design



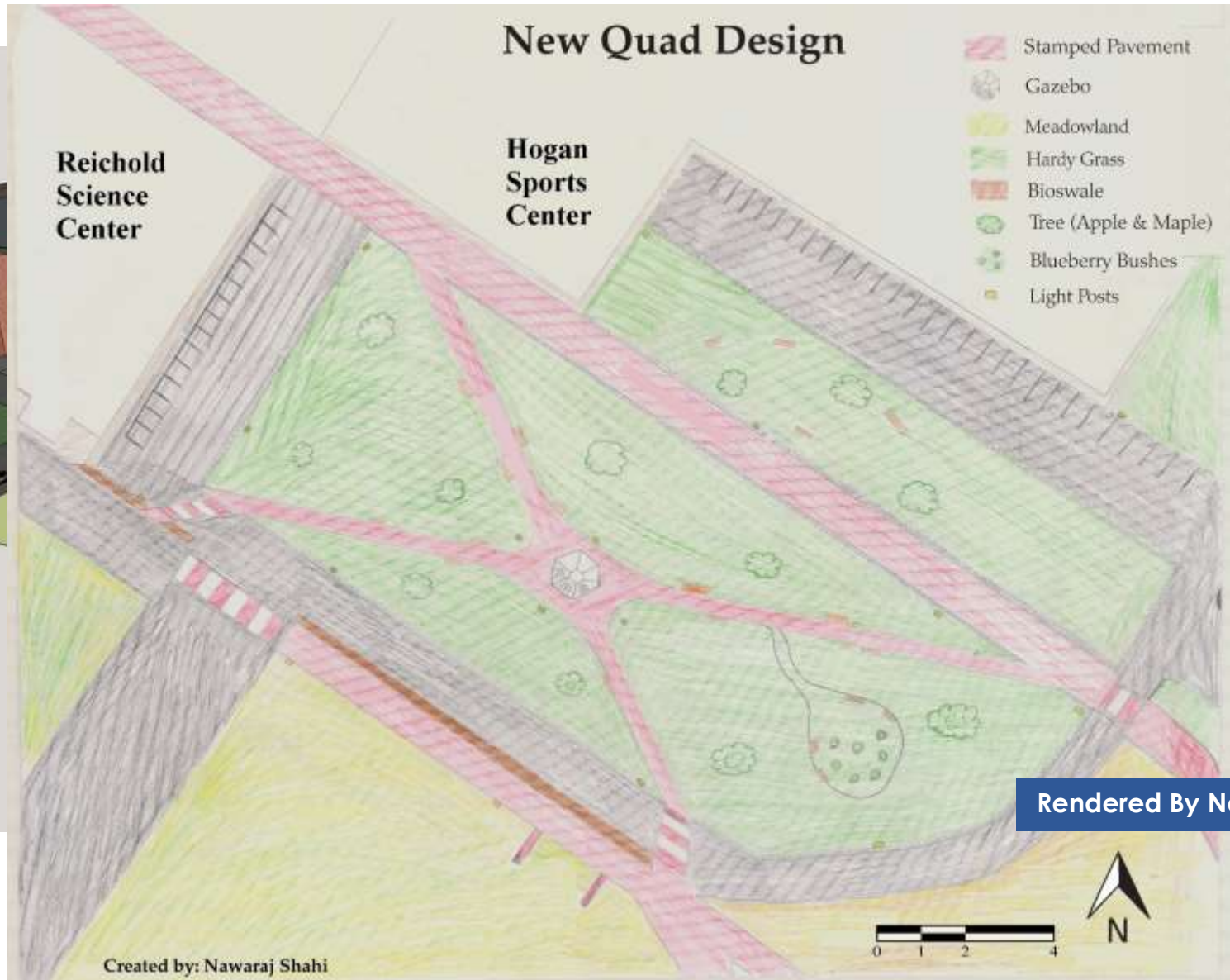
- Outdoor Fitness Area
- Lawn
- Wild Flower Patch
- Trees
- Hugel Kultur Bed
- Edible Garden Bed
- Bioswale
- Benches/Tables
- Pond
- Lighting
- Gazebo
- Trellis
- Red Pavement
- Existing Drainage
- Wooden Stairs





 Design Areas

Designs





 Design Areas

Dining Hall Concept Design

Ware Student Center



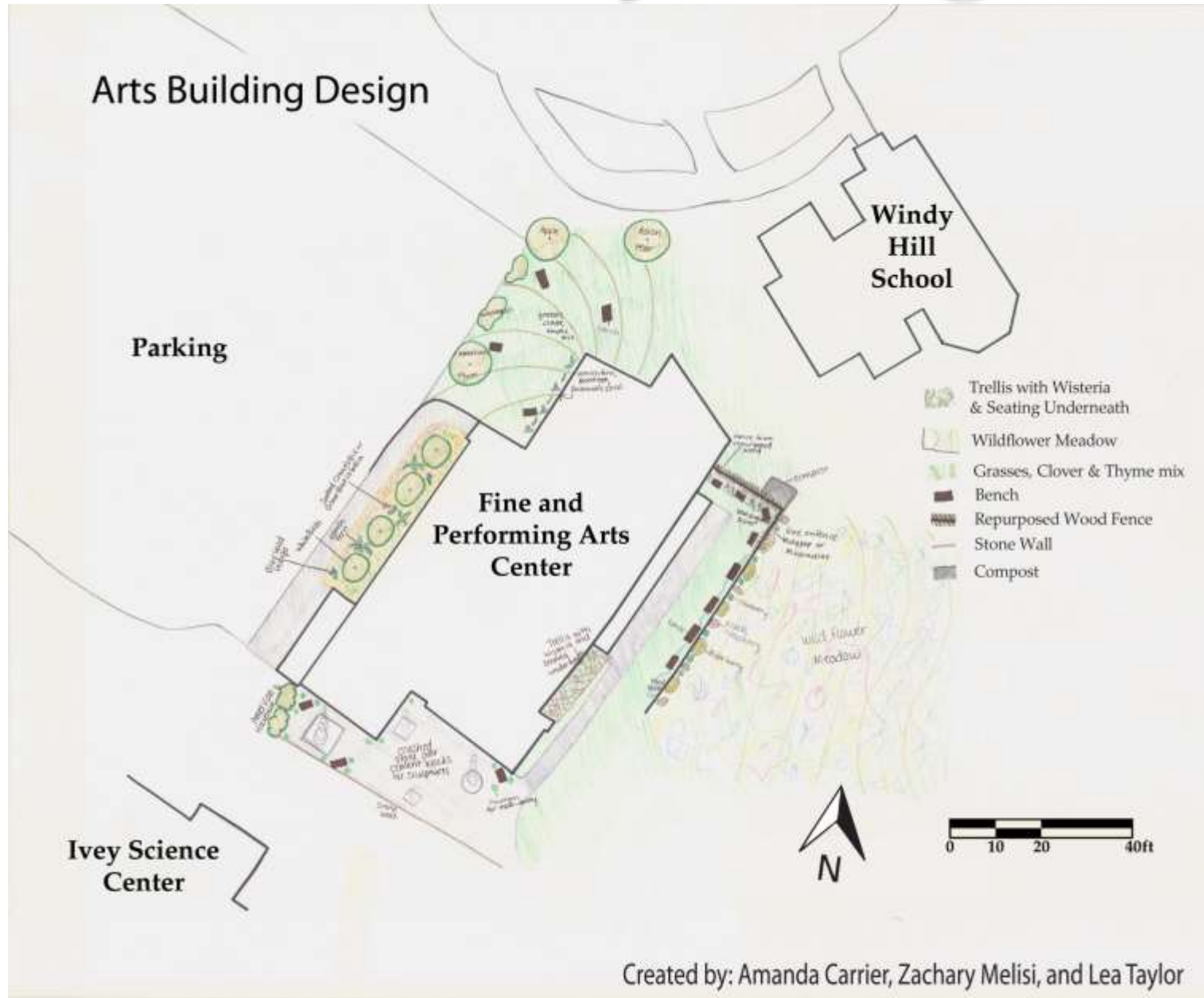
- Shade Tolerant
- Salt Tolerant
- Tea Garden
- Seating
- Stone Wall
- Mulched Path
- Perennial Garden
- Witch Hazel
- Raspberry
- Blueberry
- Hazelnut
- Elderberry
- Informational Sign



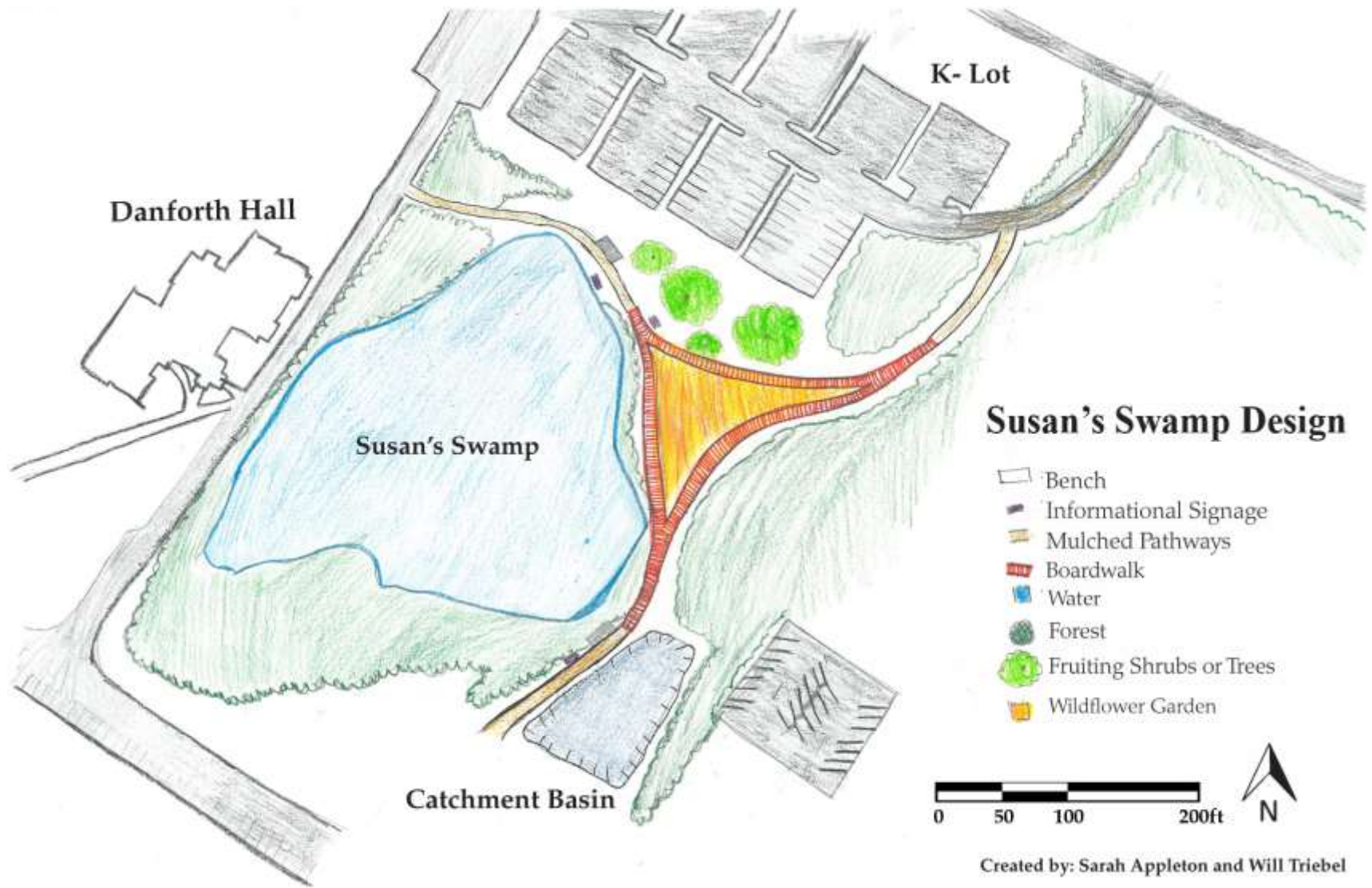
Secondary Designs



Secondary Designs



Secondary Designs



Secondary Designs

Parking Expansion



Map created for 2016 Landscape Management Plan
Imagery obtained from NH Granit
Expansion Data obtained from SLAM presentation
Map Prepared by Owen Krol

0 50 100 200 Yards

Proposed Expansion



Secondary Designs



Phasing

Phasing Summary for Focus Area Elements

Focus Area Elements	Phase 1	Phase 2	Phase 3
Lawson/Danforth	X		
Benches	X		
Trellis	X		
Meadowlands	X		
Bioswales	X		
Edible Garden Beds	X		
Hugel Beds	X		
Gazebo		X	
Light Fixtures		X	
Pavements			X
Pond			X
Susan's Swamp		X	
Benches	X		
Informational Signage	X		
Wildflower Beds	X		
Boardwalk		X	
Woodchip Path		X	
Kelsey Forest			X
Informational Signage	X		
Outdoor Classroom			X
Disc Golf Course			X
New Quad			X
Gazebo			X
Wooden Benches			X
Bioswale			X
Red-Asphalt Pathway			X
Garden Beds			X
Light Fixtures			X

Focus Area Elements	Phase 1	Phase 2	Phase 3
Page	X		
Wooden Benches	X		
Trellis	X		
Edible Garden Beds	X		
Meadowlands	X		
Wood Chip Path		X	
Entrances & Gateways	X		
Concrete Slab	X		
Flag Poles	X		
Main Sign (Fieldstone Veneer)	X		
Entrance Pillars (Fieldstone Veneer)	X		
Dining Hall		X	
Flower Beds	X		
Picnic Tables and Benches	X		
Wood Chip Path		X	
Concrete Seating Fixtures		X	
Painted Concrete Artwork		X	
Gas Fire Pit			X
Arts Building		X	
Trellis	X		
Benches	X		
Wildflower Beds	X		
Wooden Fence		X	
Gravel Path		X	

We assigned the focus areas and their respective elements to the three tiers of phases mentioned above. This is summarized in the table above.

Phasing

Phase 1: Less Than One Year

Phase 2: Two to Four Years

Phase 3: Five or More Years

Next Steps

Questions & Comments

