



Crabtree, Rohrbaugh & Associates

# ELIZABETHTOWN

## AREA SCHOOL DISTRICT

DEMOGRAPHIC STUDY UPDATE

- 1 DISTRICT'S EDUCATIONAL MODEL
- 2 DEMOGRAPHIC INFORMATION
- 3 SPACE UTILIZATION ANALYSIS
- 4 PROJECT SCHEDULE

# **① DISTRICT'S EDUCATIONAL MODEL**



## GUIDING PRINCIPLES

- The program will infuse technology to enhance 21st century learning.
- Our schools will be a connection point with the community and connect curriculum to life outside of the school.
- Curriculum will be integrated and support project based learning, encouraging creativity and critical thinking incorporating the arts.
- Encourage collaboration (student to student, student to faculty, faculty to faculty) and promote cross curricular learning.
- Spaces and furnishings be flexible and adaptable.
- The environment will be comfortable, safe, and secure.
- The school will meet the needs of the whole child, socially, academically, emotionally, and physically.
- The school will support vertical (trans grade level) learning.
- The school will support academic risk and embrace learning through building resiliency.
- Thoughtful selection of systems and materials to support activities

## Recommendations / District Guidelines

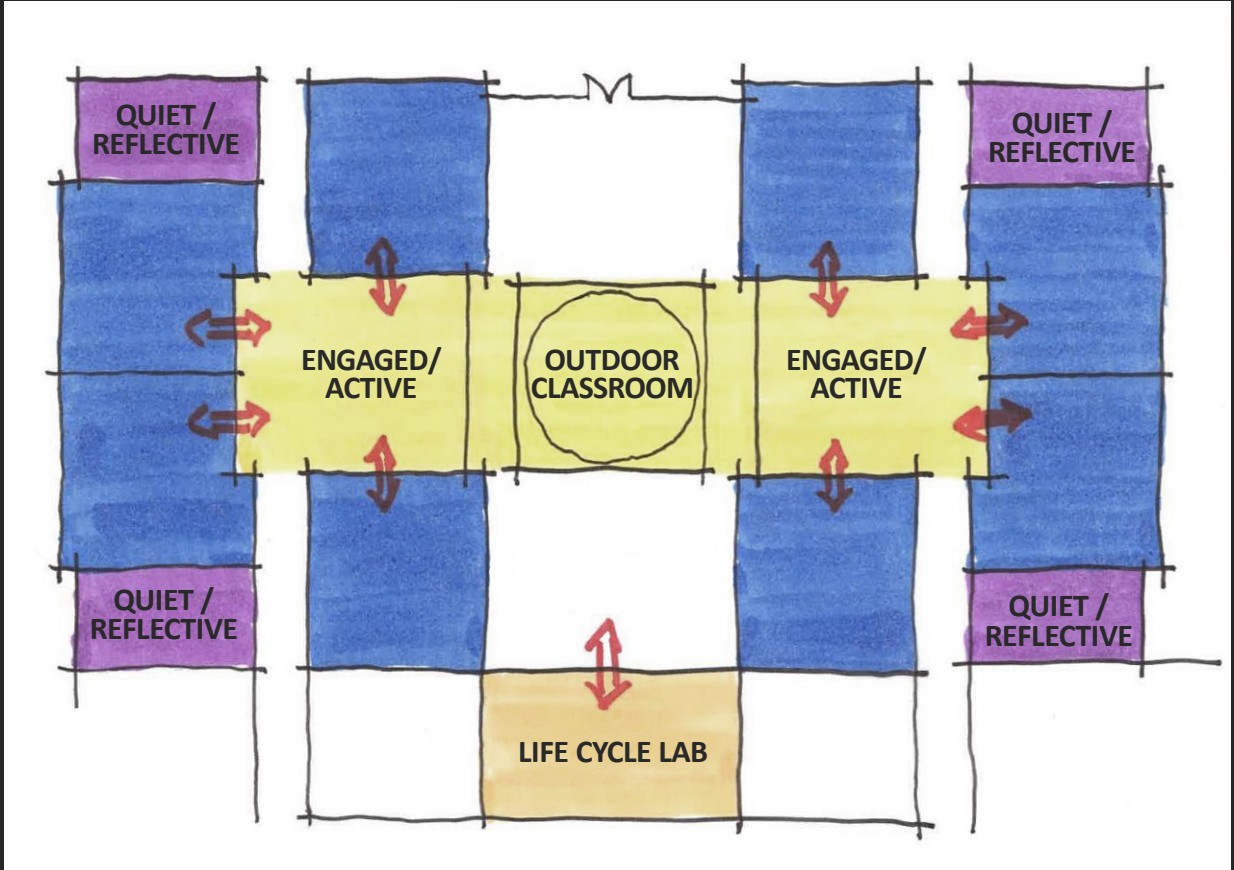
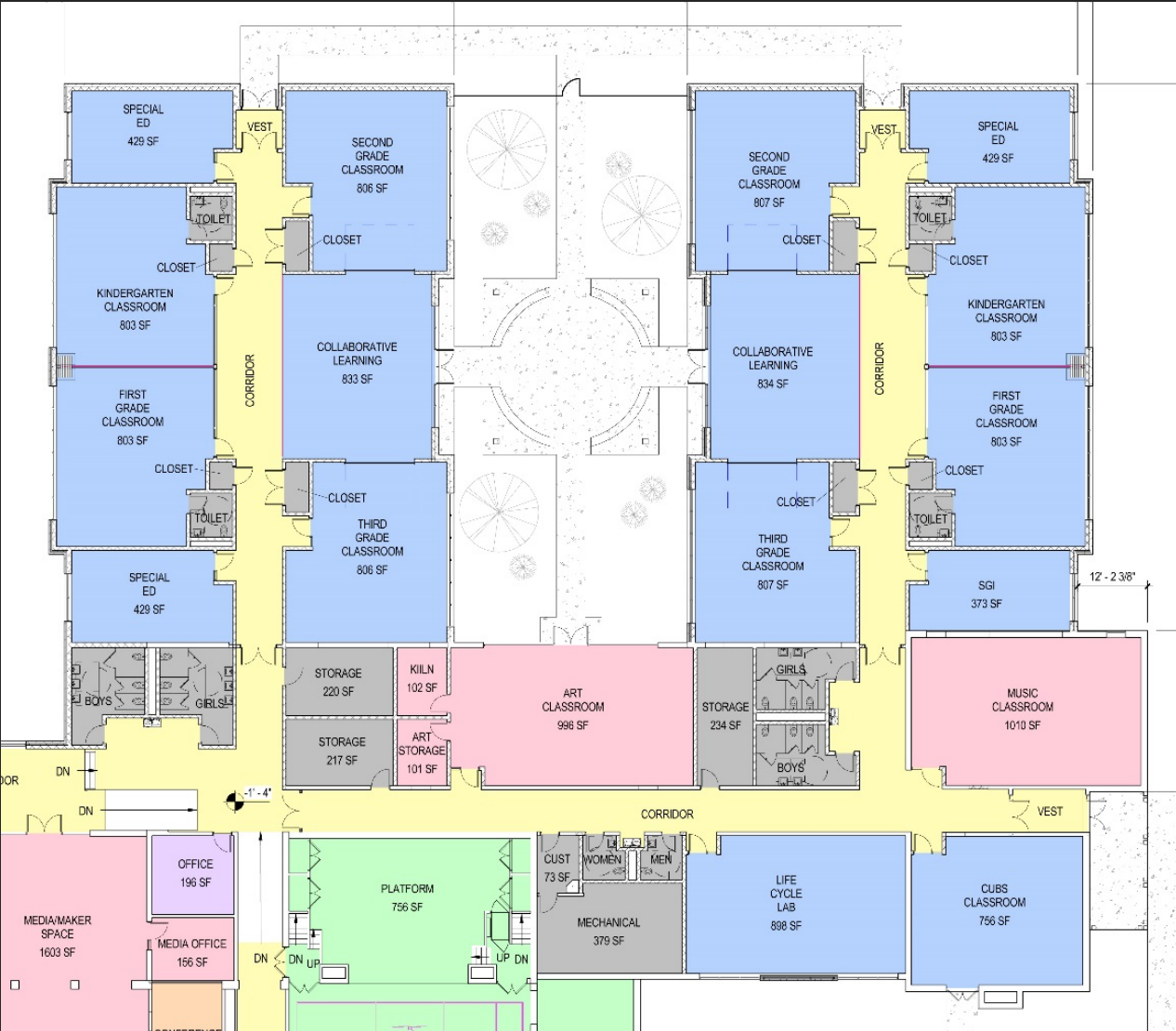
- Pa Department of Education utilizes 25 students / Classroom
- Recommend 85% utilization (program flexibility/growth)
- PDE PLANCON extension for contract execution 2021

## Elizabethtown Area School District Guidelines / Goals

- K – 3 22 students / Classroom = FUNCTIONAL CAPACITY
- Separate Gymnasium & Cafeteria
- Life cycle labs
- Collaborative labs

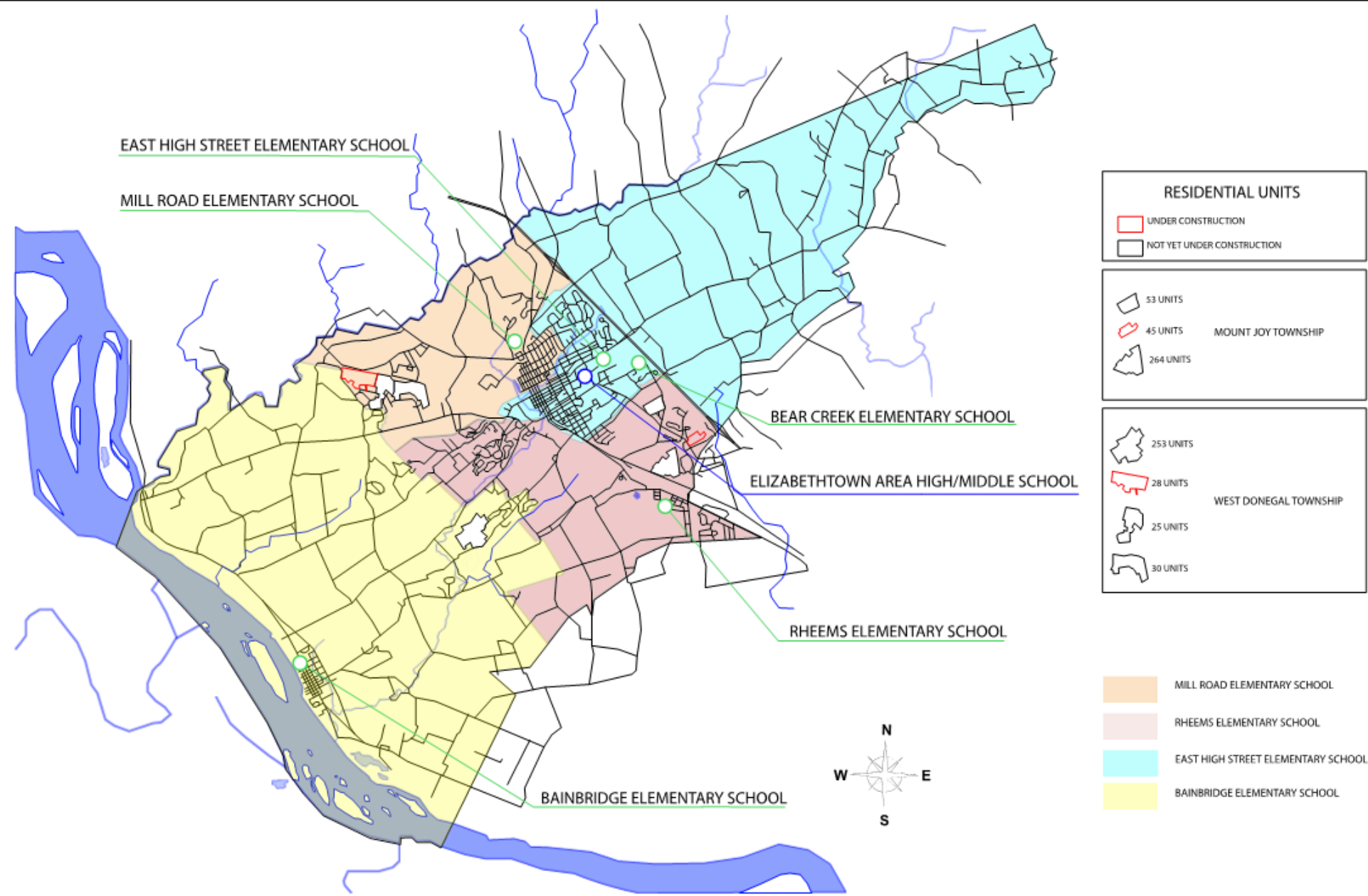
# DISTRICT EDUCATIONAL MODEL

## BUILDING ORGANIZATION



# ① DEMOGRAPHIC INFORMATION

# DEMOGRAPHIC INFORMATION



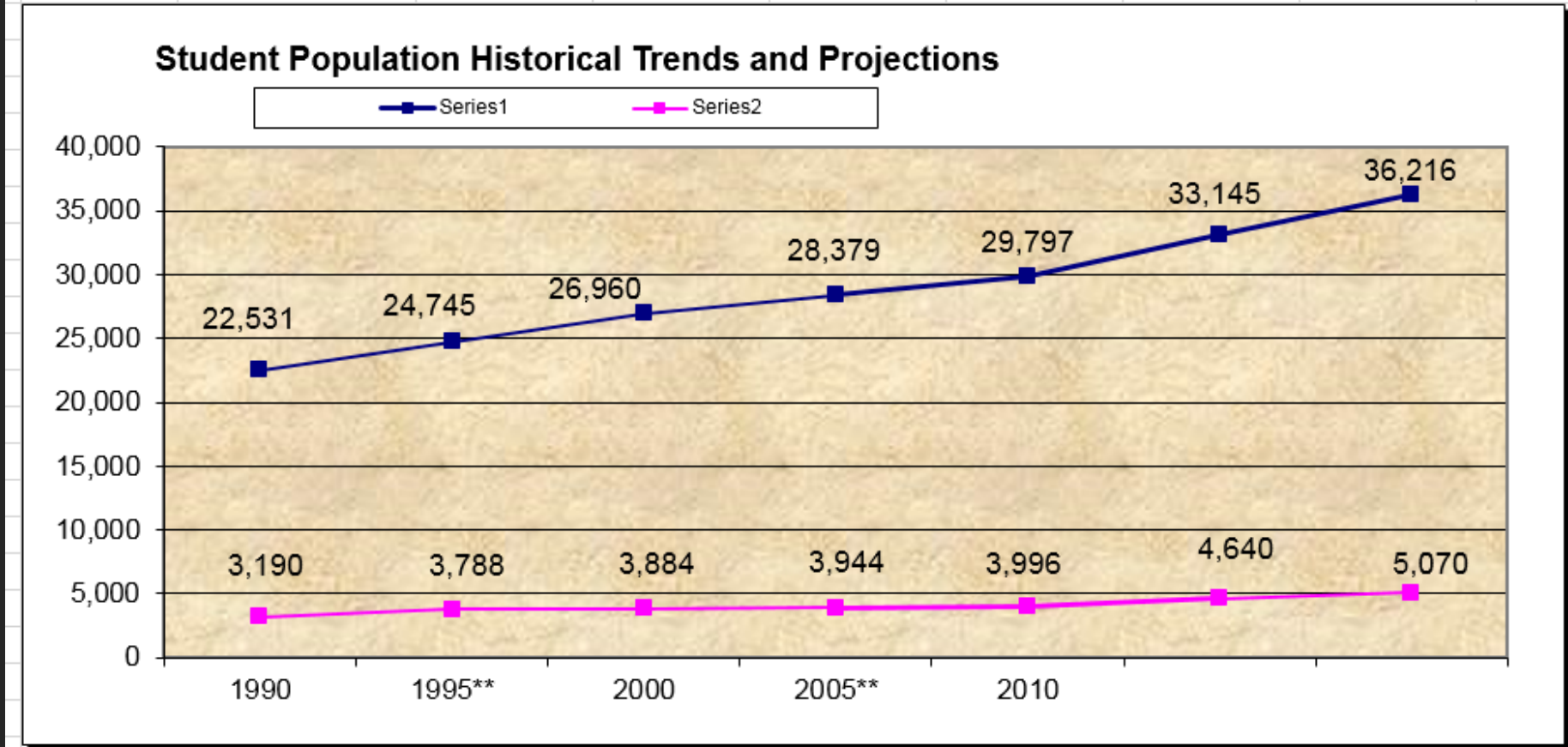


# DEMOGRAPHIC INFORMATION

MUNICIPALITY		Development Name	No. of Units	Population Increase 2.36 / Unit	Total Added Enrollment 11.5 %	Total Added Enrollment 14 %				
Mount Joy Township							Notes:			
		<i>ID 1 Westbrooke IV</i>	264	623	72	87	Application submitted	pending	traffic	
		ID 3 Res/ MU	53	125	14	18	Plan Conditionally approved			
		ID 8 Res Featherton Crossing	45	106	12	15	Phase 4 under construction			
		Total Potential	362	854	98	120				
					RANGE					
West Donegal Township										
		Bishop Woods Ph 3	28	66	8	9	Currently under construction			
		Bishop Woods Ph 4	30	71	8	10	Construction pending ?			
		Stoneybrook Ph IB	54	127	15	18	Currently under construction			
		Stoneybrook Ph IC	38	90	10	13	2018 Projected start of construction			
		Stoneybrook Ph2	51	120	14	17	2019 Projected start of construction			
		Stoneybrook Ph3	72	170	20	24	2021 Projected start of construction			
		Stoneybrook Ph4	92	217	25	30	2022 Projected start of construction			
		Total Potential	365		99	121				
					RANGE					
Elizabethtown Borough										
		Conoy Crossing Ph 3	26	61	7	9	Split between Borough & West Donegal Twnshp			
		Conoy Crossing Ph 4	16	38	4	5	Pending approval			
		Conoy Crossing Ph 5	25	59	7	8	Pending approval, All w/in Borough limits			
		Total Potential	67	158	18	22				
					RANGE					

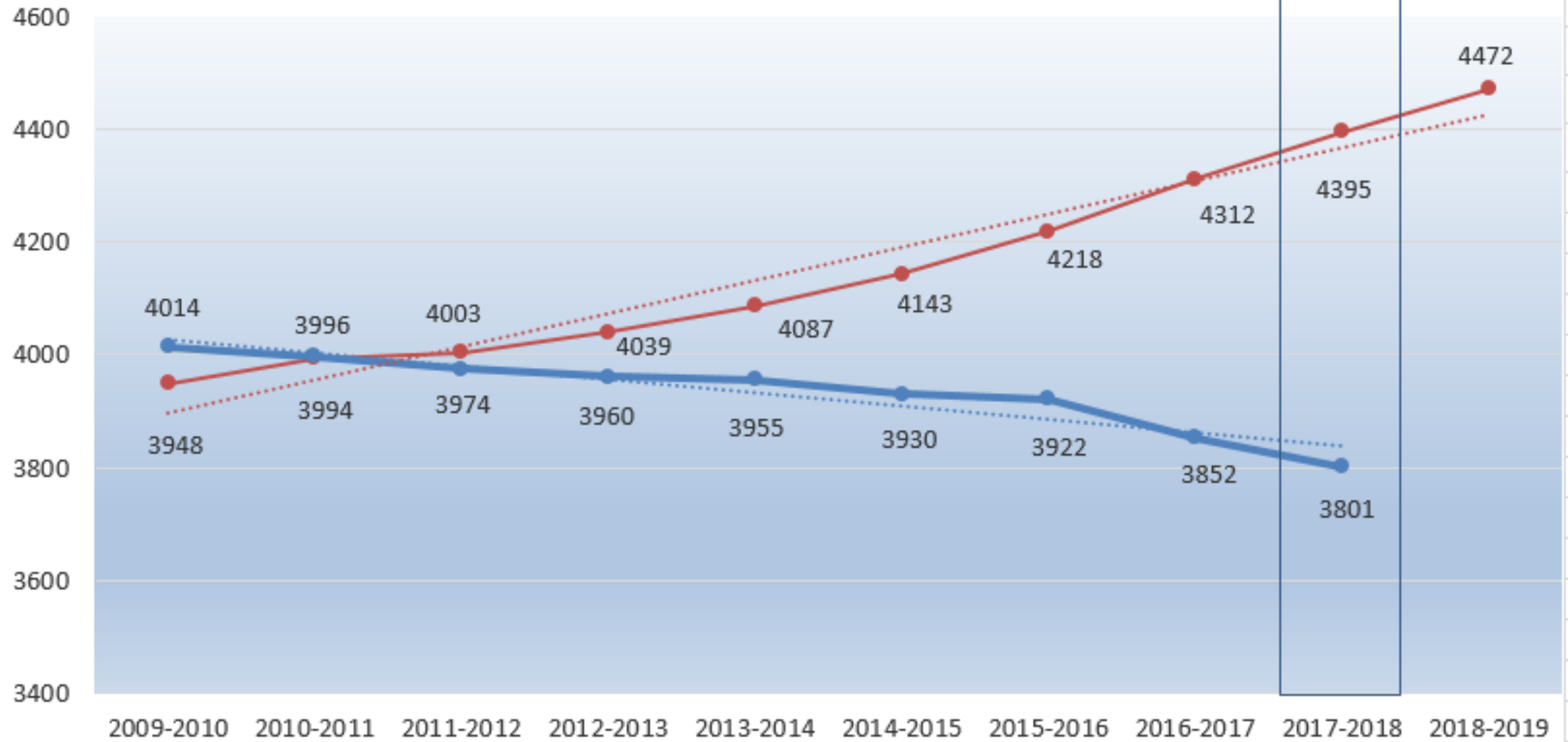
# DEMOGRAPHIC INFORMATION

HISTORICAL TREND - PROJECTION METHOD							LCPC PROJECTIONS		
			1990	1995**	2000	2005**	2010	2020	2030
District Total <u>Population</u>			22,531	24,745	26,960	28,379	29,797	33,145	36,216
District Total K-12 <u>Students</u>			3,190	3,788	3,884	3,944	3,996	4,640	5,070
% Students <i>per</i> Population			14.2%	15.3%	14.4%	13.9%	13.4%	14.0%	14.0%
** district population numbers = estimated/projected				1990-2010 (20) year average			14.2%		



# DEMOGRAPHIC INFORMATION

**PDE Projection vs Actual Enrollment**  
**2008 - 2018**



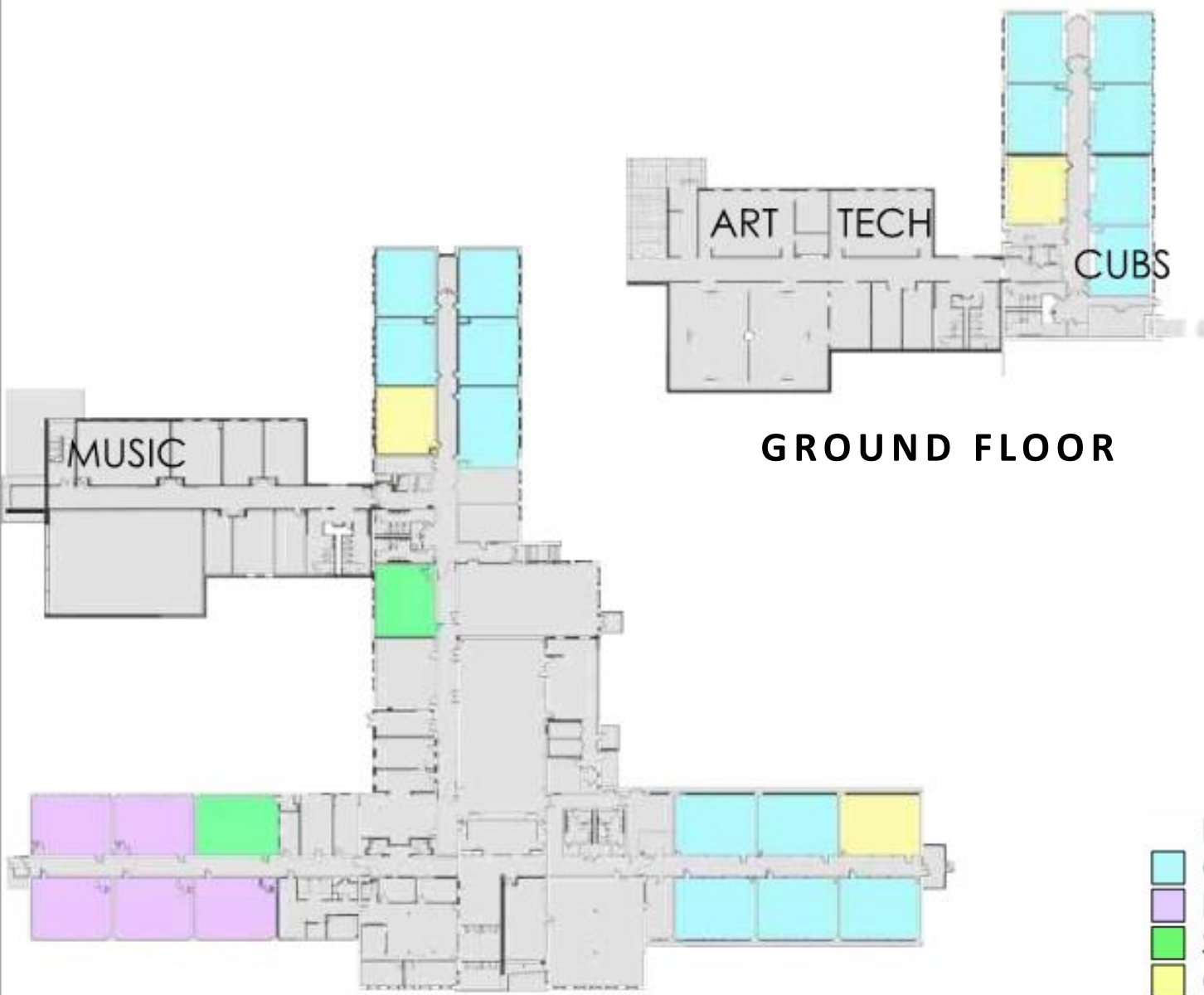
## ② SPACE UTILIZATION ANALYSIS



# EAST HIGH ELEMENTARY SCHOOL - SPACE UTILIZATION

## CURRENT USAGE (SEPTEMBER 2018)

PDE CAPACITY: 650  
EASD CAPACITY: 572



GROUND FLOOR


FIRST FLOOR

- KEY:
- CLASSROOM - CAPACITY 25
  - KINDERGARTEN - CAPACITY 25 (FULL DAY) OR 50 (HALF DAY)
  - SPECIAL ED & SUPPORT - CAPACITY 0
  - COLLABORATIVE LEARNING - CAPACITY 0
  - UNASSIGNED - CAPACITY 25
  - OTHER

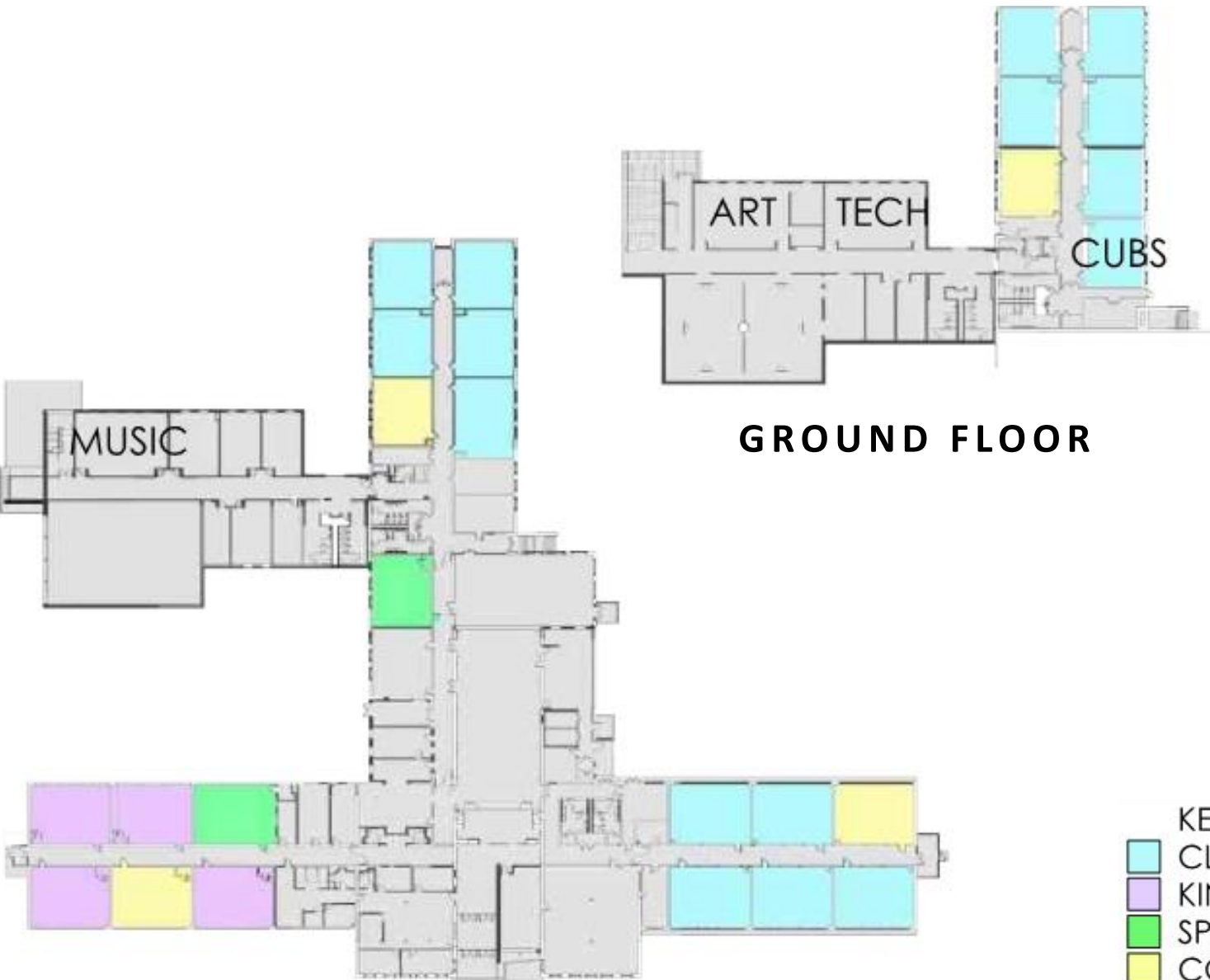
# EAST HIGH ELEMENTARY SCHOOL - SPACE UTILIZATION

## OPTION 1 - IMPLEMENTATION OF PLANNED PROGRAM

PDE CAPACITY: 600  
EASD CAPACITY: 528



ADDITIONAL  
PROGRAM  
REQUIRED



FIRST FLOOR

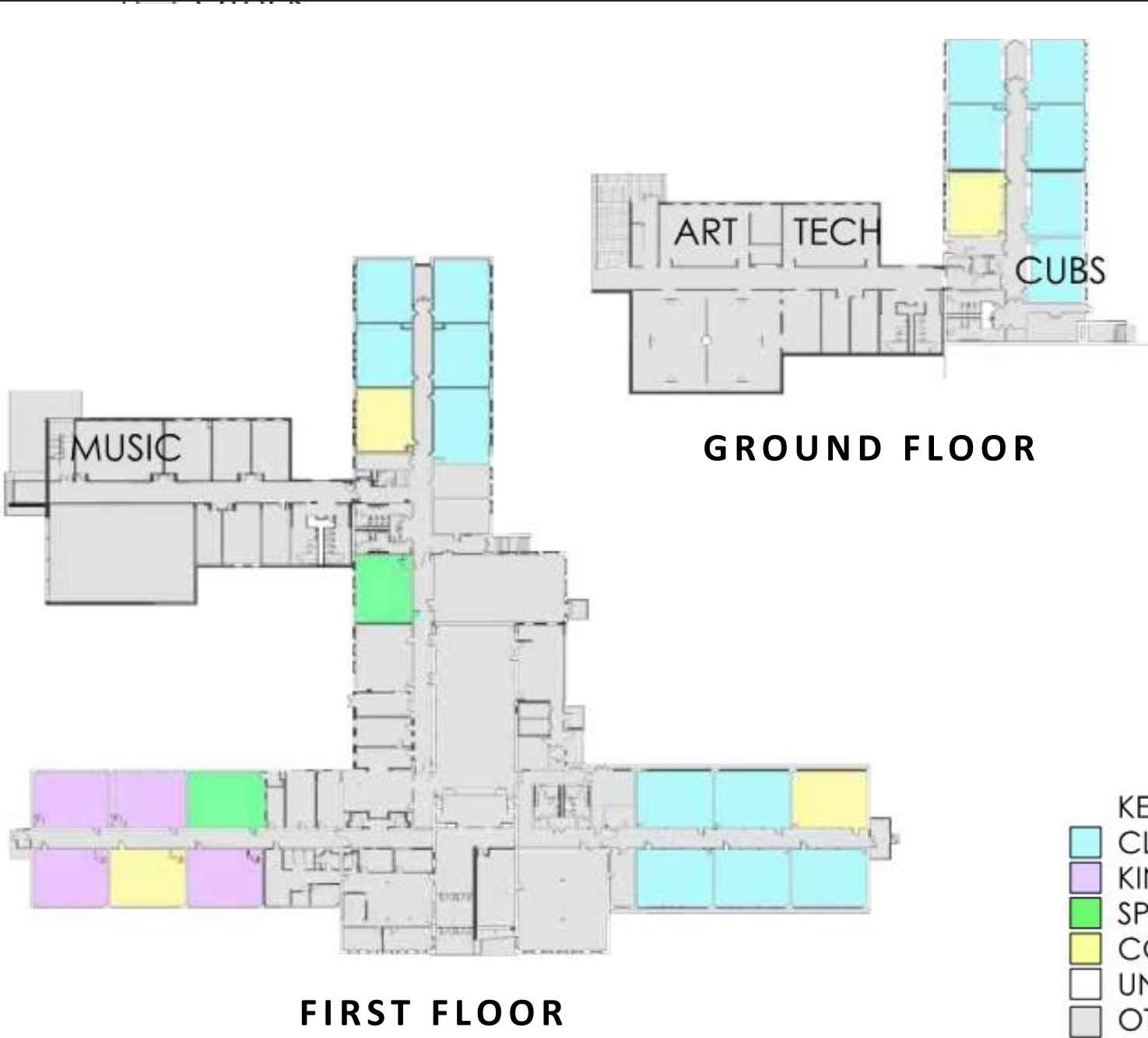
- KEY:
- CLASSROOM - CAPACITY 25
  - KINDERGARTEN - CAPACITY 25 (FULL DAY) OR 50 (HALF DAY)
  - SPECIAL ED & SUPPORT - CAPACITY 0
  - COLLABORATIVE LEARNING - CAPACITY 0
  - UNASSIGNED - CAPACITY 25
  - OTHER

# EAST HIGH ELEMENTARY SCHOOL - SPACE UTILIZATION

## OPTION 2 - IMPLEMENTATION OF PLANNED PROGRAM **AND** FULL- DAY KINDERGARTEN

PDE CAPACITY: 500  
EASD CAPACITY: 440


ADDITIONAL  
PROGRAM  
REQUIRED



- KEY:
- CLASSROOM - CAPACITY 25
  - KINDERGARTEN - CAPACITY 25 (FULL DAY) OR 50 (HALF DAY)
  - SPECIAL ED & SUPPORT - CAPACITY 0
  - COLLABORATIVE LEARNING - CAPACITY 0
  - UNASSIGNED - CAPACITY 25
  - OTHER

# SPACE UTILIZATION ANALYSIS


					Etown	
CURRENT USE		PDE	Fall 2018	CURRENT	FUNCTIONAL	
FACILITY	GRADES	CAPACITY	ENROLLMENT	UTILIZATION	CAPACITY	UTILIZATION
Bainbridge*	K - 3	250	203	81%	220	92%
East High	K - 3	650	409	63%	572	72%
Mill Road	K - 3	325	194	60%	286	68%
Rheems	K - 3	475	232	49%	418	56%
TOTAL ES		1700	1038	61%	1496	69%
* 2017 Implementation of Districts Ed Program				[PDE 85% ]		

OPTION ONE	PLANNED EDUCATIONAL PROGRAM					Etown		2027 Moderate Decision Insite PROJECTION		
FACILITY	GRADES	PDE CAPACITY	Fall 2018 ENROLLMENT		CURRENT UTILIZATION		FUNCTIONAL CAPACITY	UTILIZATION		
Bainbridge*	K - 3	250	203		81%		220	92%		
East High	K - 3	600	409		68%		528	77%		
Mill Road	K - 3	275	194		71%		242	80%		
Rheems	K - 3	350	232		66%		308	75%		
TOTAL ES		1475	1038		70%		1298	80%		
* 2017 Implementation of Districts Ed Program					[PDE 85% ]				1122	86%
							Utilizes Functional Capacity			

OPTIONS 1 & 2 ARE BASELINE UTILIZATION ANALYSIS ONLY – NO NEW CONSTRUCTION



# SPACE UTILIZATION ANALYSIS

OPTION ONE A		PLANNED EDUCATIONAL PROGRAM				Etown		2027 Moderate Decision Insite PROJECTION	
FACILITY	GRADES	PDE CAPACITY	Fall 2018 ENROLLMENT		CURRENT UTILIZATION		FUNCTIONAL CAPACITY	UTILIZATION	
Bainbridge*	K - 3	250	203		81%		220	92%	
East High	K - 3	600	484	75	81%		528	92%	
Mill Road	VACATE	0	0		0%		0	0%	
Rheems	K - 3	350	351	119	100%		308	114%	
TOTAL ES		1200	1038		87%		1056	98%	
* 2017 Implementation of Districts Ed Program					[PDE 85% ]		Utilizes Functional Capacity		

OPTION TWO		PLANNED EDUCATIONAL PROGRAM PLUS FULL DAY KINDERGARTEN					Etown		2027 Moderate Decision Insite PROJECTION	
FACILITY	GRADES	CAPACITY	Fall 2018 ENROLLMENT	CURRENT UTILIZATION		FUNCTIONAL CAPACITY	UTILIZATION			
Bainbridge*	K - 3	225	203	90%		198	103%			
East High	K - 3	500	409	82%		440	93%			
Mill Road	K - 3	275	194	71%		242	80%			
Rheems	K - 3	325	232	71%		286	81%			
TOTAL ES	Subtotal	1325	1038	78%		1166	89%	1122	96%	
* 2017 Implementation of Districts Ed Program				[PDE 85% ]		Utilizes Functional Capacity				

OPTIONS 1 & 2 ARE BASELINE UTILIZATION ANALYSIS ONLY – NO NEW CONSTRUCTION  
EXTENDED DAY PROGRAM APPROACH MAY REDUCE NUMBER OF K ROOMS NEEDED

# PROJECT SCHEDULE

Elizabethtown Area School District  
 Rheems Elementary School Design and Construction Schedule  
 Board Update - September 11, 2018

**CR** Crabtree, Rohrbaugh & Associates  
 Architects  
 401 East Winding Hill Road  
 Mechanicsburg, Pennsylvania 17055  
 phone: (717) 458-0272 - fax: (717) 458-0047

	2018				2019												2020											
	Sept	Oct	Nov	Dec	Jan	Feb	Mar	Apr	May	Jun	Jul	Aug	Sept	Oct	Nov	Dec	Jan	Feb	Mar	Apr	May	Jun	Jul	Aug	Sept	Oct	Nov	Dec
Predesign																												
Schematic Design																												
Design Development																												
Construction Documents																												
Bidding																												
Award Bids*																												
Construction																												

DESIGN

CONSTRUCTION

\* The project remains eligible for reimbursement through Plancon, provided that construction contracts are awarded by July 1, 2021.

Questions ?



Crabtree, Rohrbaugh & Associates  
[www.cra-architects.com](http://www.cra-architects.com)