



Elizabethtown Area School District

*A Deeper Dive into the K-2 Capacity
with East High & Bainbridge*

May 11, 2021

“Excellence by CHOICE, Not by Chance”

Overall Goal:

*A look at potential classroom capacity
in East High and Bainbridge
along with potential scenarios with K programming.*

*This is NOT a recommendation concerning future K
programming at EASD, just projections of classroom space
possibilities.*



K-2 Building/Classroom Capacities vs Current Needs

this excludes all Phys Education, Cafeteria, Small Group Instruction, Library spaces, Faculty/ Staff workspaces

Building	Bainbridge	East High	Mill Road	Rheems	Totals
Total Classrooms	12	29	14	23	78
Special Education use	0	3	0	1	4
<i>Art, Music, STEAM, CUBS**</i>	2	4	2	2	10
Available standard size classrooms (<i>not counting **</i>)	10	22	12	20	64
2021-22 Regular Ed classrooms <u>NEEDED</u> based on planned student enrollment, staffing, recommended class sizes	7.5	11.5	6	6	31
2021-22 Anticipated <u>OPEN</u> classrooms	2.5	10.5	6	14	33

as previously shared on 4/13/2021

“Excellence by CHOICE, Not by Chance”



K-2 Classrooms: Possible Scenarios utilizing Bainbridge & East High

this excludes specific Physical Education, Cafeteria, Small Group Instruction and Library spaces

Building	Bainbridge	East High	Totals
Total Classrooms	12	29	41
Special Education use	1	3	4
<i>Art, Music, STEAM, CUBS**</i>	2	4	6
Available standard size classrooms (<i>not counting **</i>)	9	22	31
2022-23 Regular Ed classrooms <u>NEEDED</u> based on planned student enrollment, staffing, recommended class sizes	9	22	31



K-2 Capacity with 31 Regular Ed (4 Special Ed) Classrooms

this excludes specific Physical Education, Cafeteria, Small Group Instruction and Library spaces

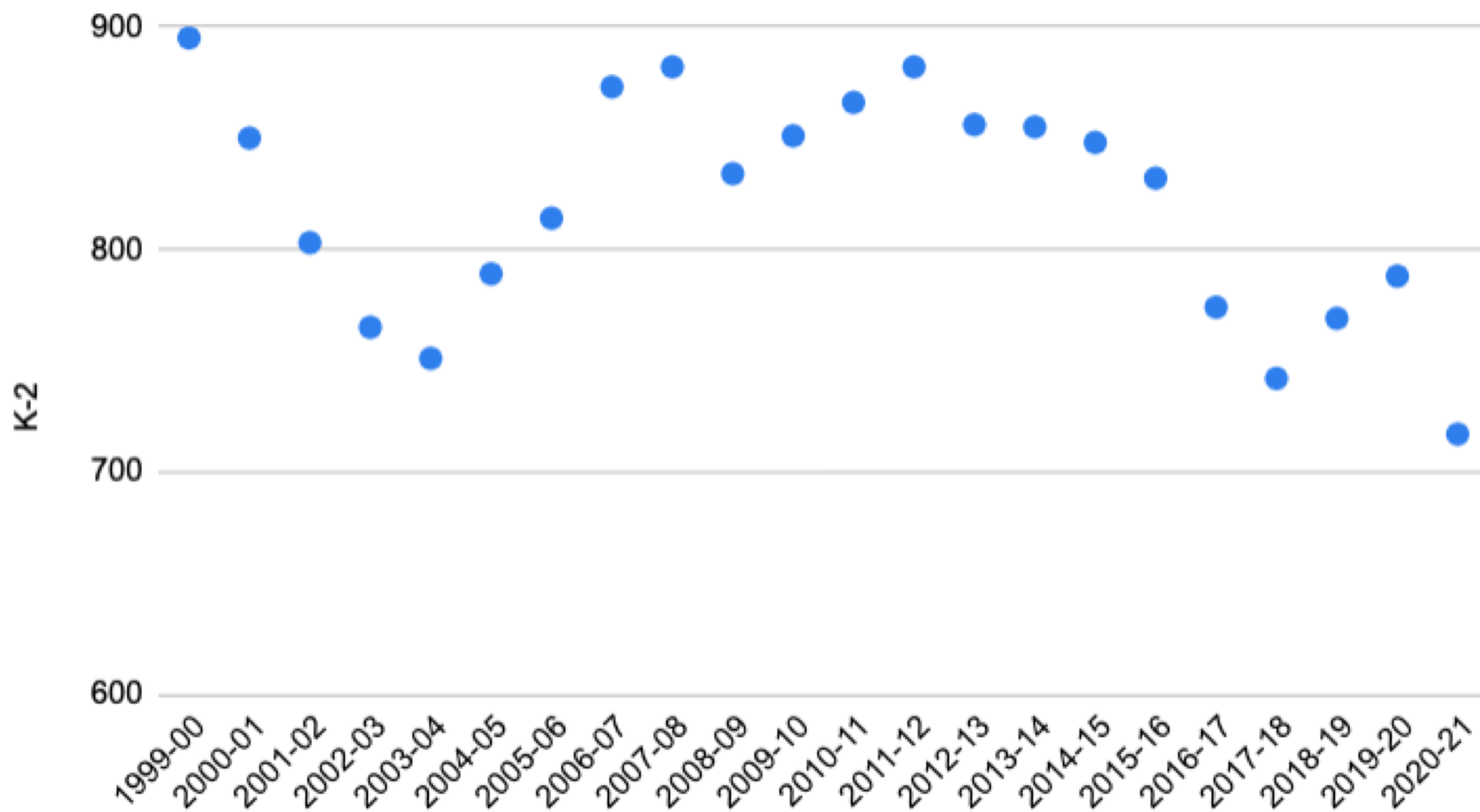
Grade	Qty	EASD #	Capacity	4/30/21 Enrollment	2022-23 Conservative	2022-23 Moderate	Highest Conservative (2026-27)
K Rooms - 1/2 Day	6	46	276	224 (17)	232	247	250
K Rooms - Full Day	0	23	0				
1st Grade Rooms	12	23	276	238 (54)	247	262	266
2nd Grade Rooms	13	23	299	266 (39)	258	266	270
Total	31		851	728 (110)*	737	775	786

* 728 Enrollment # includes 96 EASD online students, an additional 110 are currently Homeschool and Cyber Charter Students



“Excellence by CHOICE, Not by Chance”

K-2 Student Enrollment at EASD



“Excellence by CHOICE, Not by Chance”



Scenario with 4 All Day K Classrooms Across Two Buildings

Grade	Qty	EASD #	Capacity	4/30/21 Enrollment	2022-23 Conservative	2022-23 Moderate	Highest Conservative (2026-27)
K Rooms - 1/2 Day	3	46	138	224 (17)	232	247	250
K Rooms - Full Day	4	23	92				
1st Grade Rooms	12	23	276	238 (54)	247	262	266
2nd Grade Rooms	12	23	276	266 (39)	258	266	270
Total	31		782	728 (110)	737	775	786

Red Boxes: Would not have adequate capacity if ALL students are in person without using some of the “special” area classrooms, adding classrooms and/or increase class sizes.



Scenario with All Day K Classrooms in Both Buildings

Grade	Qty	EASD #	Capacity	4/30/21 Enrollment	2022-23 Conservative	2022-23 Moderate	Highest Conservative (2026-27)
K Rooms - 1/2 Day	0	46	0				
K Rooms - Full Day	9	23	207	224 (17)	232	247	250
1st Grade Rooms	11	23	253	238 (54)	247	262	266
2nd Grade Rooms	11	23	253	266 (39)	258	266	270
Total	31		713	728 (110)	737	775	786

Red Boxes: Would not have adequate capacity if all students are in person without using some of the “special” area classrooms, adding classrooms, and/or increasing class sizes.



How many Classrooms are needed for Full Day K?

Grade	Qty	EASD #	Capacity	4/30/21 Enrollment	2022-23 Conservative	2022-23 Moderate	Highest Conservative (2026-27)
K Rooms - 1/2 Day	0	46	0				
K Rooms - Full Day	11	23	253	224 (17)	232	247	250
1st Grade Rooms	12	23	276	238 (54)	247	262	266
2nd Grade Rooms	12	23	276	266 (39)	258	266	270
Total	35		805	728 (110)	737	775	786

**Would need at least 35 Regular Education Classrooms + 4 Special
Education Classrooms = Addition or Reclassify 4 Classrooms
(could be 3 to 4 additional with DI Moderate Projection)**



“Excellence by CHOICE, Not by Chance”

Take Aways

If the district consolidated four K-2 buildings into two K-2 buildings, creating the community schools concept:

- There is enough capacity to accommodate current and predicted enrollment numbers at the K-2 level
- Without renovations/ additions to East High, at some point,
 - There would not be comparable learning spaces between the two buildings ie. large, flexible group classroom learning spaces (there is already a separate gym and cafeteria)
 - It may be challenging to implement 4 full day Kindergarten classrooms between the two buildings
 - It would be impossible to implement full day kindergarten for all students
- Some level of renovation/ addition at East High would be less costly then renovating either Rheems and/ or Mill Road



Timeline Review



Timeline (Slide 1)

- August 27, 2018 - Bainbridge Elementary School opens
- September 11, 2018 - CR&A & DecisionInsite Demographic Analysis Presentation
- October 9, 2018 - CR&A Presentation - Rheems Elem. Presentation - Possible Designs
- November 13, 2018 - Pennsylvania Financial Management (PFM) presentation
- February 12, 2019 - Board statement regarding the shift in the focus of scope of renovations
- February 26, 2019 - Lower Level EAMS Option Presented (would allow 6th Grade to move to EAMS & 3rd Grade to Bear Creek School)
- August 13, 2019 - Lower Level EAMS Option Update
- August 27, 2019 - Lower Level EAMS Option Bid Scope Approval
- September 10, 2019 - Board presentation related to a Five-Year Financial Plan
- September 24, 2019 - Lower Level EAMS Cafeteria Options Update, Five-Year Financial Plan
- October 8, 2019 - Review of Five-Year Financial Plan
- November 12, 2019 - Lower Level EAMS Design Update
- December 3, 2019 - Review of Five-Year Financial Plan
- December 17, 2019 - Review of Five-Year Financial Plan



Timeline (Slide 2)

- January 14, 2020 - Lower Level MS Final Bid Preparation, Five-Year Financial Plan
- January 21, 2020 - District Administration begins reviewing placement of Rheems students during renovation
- January 28, 2020 - Potential of Consolidation Concept Presented to School Board
- February 11, 2020 - Update on progress of Consolidation Option Presented to School Board
- February 25, 2020 - Update on progress of Consolidation Option Presented to School Board
- March 10, 2020 - District administration presents findings on School Consolidation
- March 31, 2020 - Board approves contracts for renovations of 6th grade area of MS
- October 13, 2020 - Board Multiple Year Budget Update
- November 10, 2020 - Board Multiple Year Budget Update (included a look at operating cost associated with maintaining Mill Road & Rheems)
- December 15, 2020 - Board approval to move 3rd grade to BC & 6th grade to MS for 2021-22 school year
- December 15, 2020 - Board approval engaging DecisionInsite for district enrollment & residential housing development



Timeline (Slide 3)

- January 12, 2021 - Mr. Jeffrey Litts, School Board Solicitor, with KKLL presented legal requirements & process to close a school building
- January 12, 2021 - The School Board presented a Proposed EASD Timeline for Discussion of School Building Review and Options
- January 26, 2021 - The School Board approved the Proposed Timeline for Discussion of School Building Review and Options
- March 9, 2021 - Presentation from DecisionInsite on District Enrollment Projections
- March 23, 2021 - Presentation on District K-2 Facilities
- April 13, 2021 - Aligning our Resources in a Fiscally Responsible & Educationally Sound Vision for the Future:
- **May 11, 2021 - A Deeper Dive into the K-2 Capacity with East High & Bainbridge**



Proposed Future Timeline (Slide 1)

- *May 11 and 25 - Board Discussion of Presentations and Planning for Community Feedback and Input/ThoughtExchange*
- *June 2021 - Gather, Share, & Respond to Community Input*
- *August 2021 - Board determines if any additional information is needed, establish date for second Community Forum/ThoughtExchange*
- *September 2021 - Gather, Share, & Respond to Community Input*
- *October 12, 2021 Workshop:*
 - *Recommendation from Admin on School Alignment options, including possible school closures*
 - *Board/admin Discussion- if consensus is to consider possible school(s) closure then will place on the next meeting agenda*



Proposed Future Timeline (Slide 2)

- October 26, 2021 Board Meeting:
 - Decision Board to consider School alignment with school closure(s).
 - **If decision is no**, then no further action regarding alignment
 - **If decision is yes**,
 - Advertise for Public Hearing prior to end of October 2021 (15 day advertising requirement)
 - Hold Public Hearing between November 15 and 23 on possible school closures (90 day requirement until vote)
 - February 22, 2022 Board Voting Meeting
 - Vote on Alignment option that would include building(s) closures



Questions?



“Excellence by CHOICE, Not by Chance”