



MPTCS Superintendent's Report



Reimagining The Village...

Presented by Angela Mincy & May 23, 2022

Experience is the teacher of all things.



-JULIUS CAESAR-

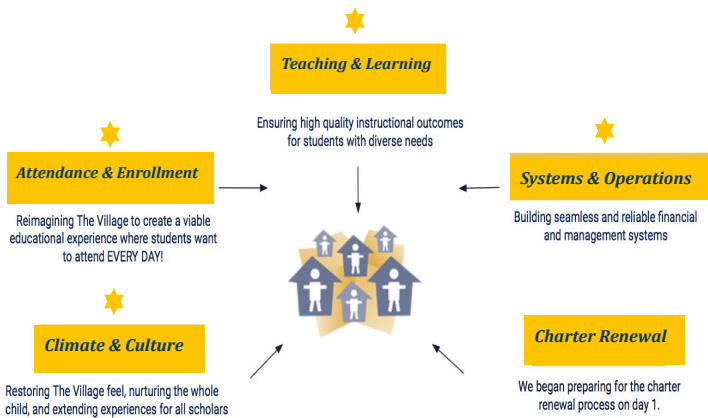


marion p thomas
CHARTER SCHOOL

Reimagining the Village

Agenda

- ★ Greetings
- ★ Updates on MPTCS Focus Areas for 21-22 SY



Academic Updates

Elementary Summer Programming

- Offering Enrichment and Remediation
- **Location:** PAC Campus
 - Allows for facility upgrades at STEAM
- **Dates:** July 5th through the 29th
- **Time:** 8:30 am to 12:30 pm (Students)
- Breakfast and lunch provided

High School Summer Programming

- Summer Immersion: July 5th - July 14th
- 10th -12th Grade Summer Bridge
 - 2-day bridge program for each grade level
 - Week of 7/11
- 9th Grade Summer Bridge: 7/18-7/21
- All programs will run from 8:30 am to 12:30 pm for students

Academic Updates

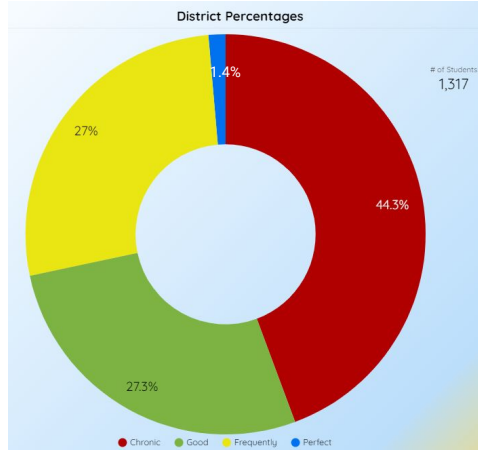
- NJSLA Testing - Testing Window: 5/9-5/20
 - Currently in the process of make-up tests
 - Expect results over the summer
- NWEA MAP - Testing Window: 6/6-6/10
 - Results will be shared at June's board meeting
- Planning for 2022-2023 school year in the following areas:
 - Summer Institute for Staff
 - MPTCS New Teacher Academy
 - Academic Calendar

Moving Up and Commencement Ceremonies

- STEAM Campus - June 21st at 9:00 am
 - **Location:** STEAM Auditorium
- High School Campus - June 22nd @ 5:00 pm
 - **Location:** Essex County College Gymnasium
- PAC Campus - June 23rd @ **10:00 am**
 - **Location:** High School Blackbox Theater



Attendance & Enrollment



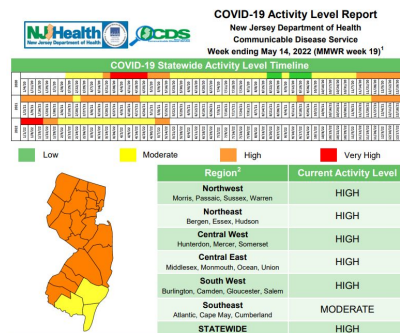
- Average Daily Attendance (ADA)
 - District - 21-22 SY **88.01%**; 20-21 SY - 81.06%
 - STEAM ADA - **91.28%**
 - High School ADA - **87.29%**
 - PAC ADA - **85.45%**
- Current Chronic Absenteeism Rate (Year to Date) - **44.3%**
 - Significantly lower than last year's rate of **72.4%**
- We are continuing to celebrate our scholars each month to lift their spirits and bring attendance awareness to the Village.

Systems and Operations

Systems and Operations

COVID-19 Updates

- Uptick in cases throughout the state and district.
- Essex County is currently in the “high activity” range according to the NJ Statewide Activity Report - Week ending May 14th
- Mask mandates will continue to be enforced for all students and staff members
- Since our last board meeting, we have had a total of 16 cases
 - 10 Staff Members
 - 6 Students



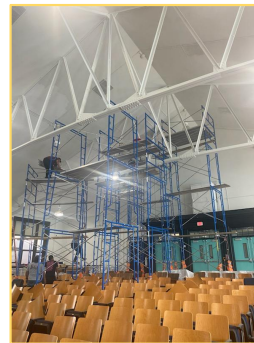
Facilities Updates

General Updates

- PAC Auditorium construction has officially started and we are on track for an end of June completion.
- Replacement of STEAM Gym floors will begin at the end of this month.

Lead Water Testing Results:

- All three campuses were tested on March 26, 2022
- PAC and High School Campus - Good news!
 - All results came back below 15 ppb as outlined by the NJDOE. No additional remediation and/or sampling is required at this time.
- STEAM Campus
 - Of the eleven (11) drinking water outlets sampled during our visit, one (1) kitchen outlet contained lead concentrations above the NJDOE action level.
 - The outlet had not been in use. However, it was immediately removed for service.





marion p thomas
CHARTER SCHOOL

What Is HIB?

NJ Anti- Bullying/HIB Law established in 2011:

<https://www.nj.gov/education/students/safety/behavior/hib/>

1. An event can be any gesture, written, verbal, or physical act, or electronic communication, whether it is a single incident or a series of incidents.
2. The event must be seen by a reasonable as being motivated either by any actual or perceived characteristic such as race, color, religion, ancestry, national origin, gender, sexual orientation, gender identity and expression, or a mental physical or sensory disability, or by any other distinguishing characteristic.
3. The event takes place on school property, at any school sponsored function, on a school bus, or off school grounds that substantially disrupts or interferes with the orderly operations of the school.
4. One of the following criteria must be met: The event has the effect of physically or emotionally harming a student or damaging the student's property, or placing a student in reasonable fear of physical or emotional harm to his person or damage to his property; OR
 - o The event has the effect of insulting or demeaning any student or group of students; OR
 - o Creates a hostile educational environment for the student by interfering with a student's education or by severely or pervasively causing physical or emotional harm to the student



marion p thomas
CHARTER SCHOOL

What Is HIB Self-Assessment?

School Self-Assessment for Determining Grades under the ABR (Self-Assessment)

- Developed in response to the requirement within the ABR for school and district grading.
- Created in consultation with two advisory groups and various offices in the New Jersey Department of Education.
- Self-Assessment is intended to help schools and districts evaluate efforts in implementing the ABR.
- Self-Assessment may serve as an opportunity for schools and school districts to reinforce and strengthen HIB prevention and intervention programs, policies and practices.



marion p thomas
CHARTER SCHOOL

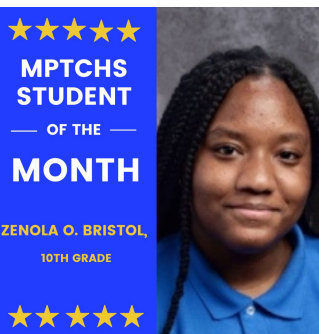
2020-21 HIB Reporting/Grading

Core Element	HIB Score	HIB Grade
Core Element#1: HIB Programs, Approaches or Other Initiatives (N.J.S.A. 18A:37- 17a)	9/15	Meeting Expectations
Core Element#2: Training on the BOE-approved HIB Policy and Procedures (N.J.S.A. 18A:37-17b and c)	6/9	Meeting Expectations
Core Element#3: Other Staff Instruction and Training Programs (N.J.S.A. 18A:6-112, N.J.S.A.18A:37-22d, N.J.S.A. 18A:37-26a, N.J.S.A. 18A:37-21d, N.J.S.A. 18A:26-8.2)	9/15	Meeting Expectations
Core Element#4: Curriculum and Instruction on HIB and Related Information and Skills(N.J.S.A. 18A:37-29)	3/6	Meeting Expectations
Core Element#5: HIB Personnel (N.J.S.A. 18A:37-20a, N.J.S.A. 18A:37-20c, N.J.S.A. 18A:37-21a)	6/9	Meeting Expectations
Core Element #6: School-Level HIB Incident Reporting Procedure (N.J.S.A. 18A:37-15b(5), N.J.S.A. 18A: 37-15b(6)(a))and (b))	4/6	Partially Meeting
Core Element #7: HIB Investigation Procedure (N.J.S.A. 18A:37-15b(5) and (6)(a) and (b))	6/12	Partially Meeting
Core Element #8: HIB Reporting (N.J.S.A. 18A:17- 46)	3/6	Partially Meeting
Total	45/78	Partially Meeting

Core Element	HIB Score	HIB Grade
Core Element#1: HIB Programs, Approaches or Other Initiatives (N.J.S.A. 18A:37- 17a)	12/15	Meeting Expectations
Core Element#2: Training on the BOE-approved HIB Policy and Procedures (N.J.S.A. 18A:37-17b and c)	6/9	Meeting Expectations
Core Element#3: Other Staff Instruction and Training Programs (N.J.S.A. 18A:6-112, N.J.S.A.18A:37-22d, N.J.S.A. 18A:37-26a, N.J.S.A. 18A:37-21d, N.J.S.A. 18A:26-8.2)	12/15	Meeting Expectations
Core Element#4: Curriculum and Instruction on HIB and Related Information and Skills(N.J.S.A. 18A:37-29)	6/6	Exceeding Expectations
Core Element#5: HIB Personnel (N.J.S.A. 18A:37-20a, N.J.S.A. 18A:37-20c, N.J.S.A. 18A:37-21a)	6/9	Meeting Expectations
Core Element #6: School-Level HIB Incident Reporting Procedure (N.J.S.A. 18A:37-15b(5), N.J.S.A. 18A:37-15b(6)(a))and (b))	6/6	Exceeding Expectations
Core Element #7: HIB Investigation Procedure (N.J.S.A. 18A:37-15b(5) and (6)(a) and (b))	12/12	Meeting Expectations
Core Element #8: HIB Reporting (N.J.S.A. 18A:17- 46)	6/6	Exceeding Expectations




We are proud of our scholars M'Yed, Dylan, Eddie, Mohammed, J. Louvansky, and Day'Anna and their advisors, Chef Clarke and Chef B, for their first place finish in the Culinary Student Showcase! Our scholars had the pleasure of competing against a host of schools throughout NJ and emerged as the reigning champions!



Saint James AME Church Awards \$10K in Gift Cards to Newark Educators
tapinto.net *Happy Teacher Appreciation!*



★★★★★
**MPTCHS
EMPLOYEE**
— OF THE —
MONTH
**TYLER COUPLAND,
TEACHER**
Thank you for all your hard
work on this month, we're
lucky have you here.
★★★★★



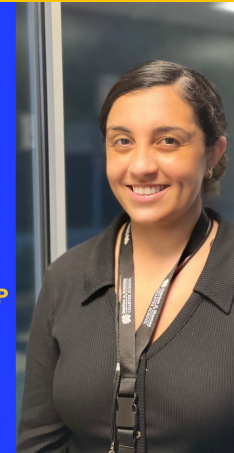
★★★★★
**PAC
EMPLOYEE**
— OF THE —
MONTH
**LAWANA POWELL,
FACE**
Thank you for all your hard
work on this month, we're
lucky have you in the Village.
★★★★★



★★★★★
**STEAM
EMPLOYEE**
— OF THE —
MONTH
**ARIELLE HINDS,
OFFICE MANAGER**
Thank you for all your hard
work on this month, we're
lucky have you in the Village.
★★★★★




★★★★★
**MPTCS
ADMIN**
— OF THE —
MONTH
**THERESA
MACINTOSH, HS VP**
Thank you for all your hard
work on this month, we're
lucky have you here.
★★★★★



Thank you for listening.

