



FLORENCE BIG RED BAND

Band Handbook

2023-2024

Beau Robinson, Director of Bands

Nick Papania, Assistant Band Director

Josh Menard, Percussion / Assistant Director

Florence High School Music Program

Welcome to the Florence High School Band. Each year, the Florence High School Band has the potential to be a great band if we choose to be. With the enthusiasm and dedication of the students, I would like to take this band to the next level. It is my hope that you make many friendships in the band, make many memories, and feel a sense of pride as a result of your accomplishments. Pride is an integral part of the band. You should be able to walk away from this experience saying, "I was a part to the Florence High School Big Red Band!"

By accepting membership into the Florence High School Band, you agree to perform to the best of your abilities and work hard together with the band staff to make this year's band the finest musical organization that our combined efforts can produce.

You are expected to:

Report consistently and on time to all rehearsals and performances. Students must be in the right place at the right time; in the proper dress or uniform with music, instrument, and/or other required equipment; and ready to put forth their best effort to create a fine product.

Practice with hard work and dedication.

Cooperate fully with your leaders, knowing that you will be held accountable for your actions and your contribution to the success of this organization.

Commit financially. Band dues are vital to making this program successful; therefore, they must be paid and paid on time.

Enthusiasm and hard work on your part can take this band to the next level. Let's make this a year to remember!

Sincerely,

Beau Robinson
Director of Bands
Edw201@rcsd.ms
(601)829-6946

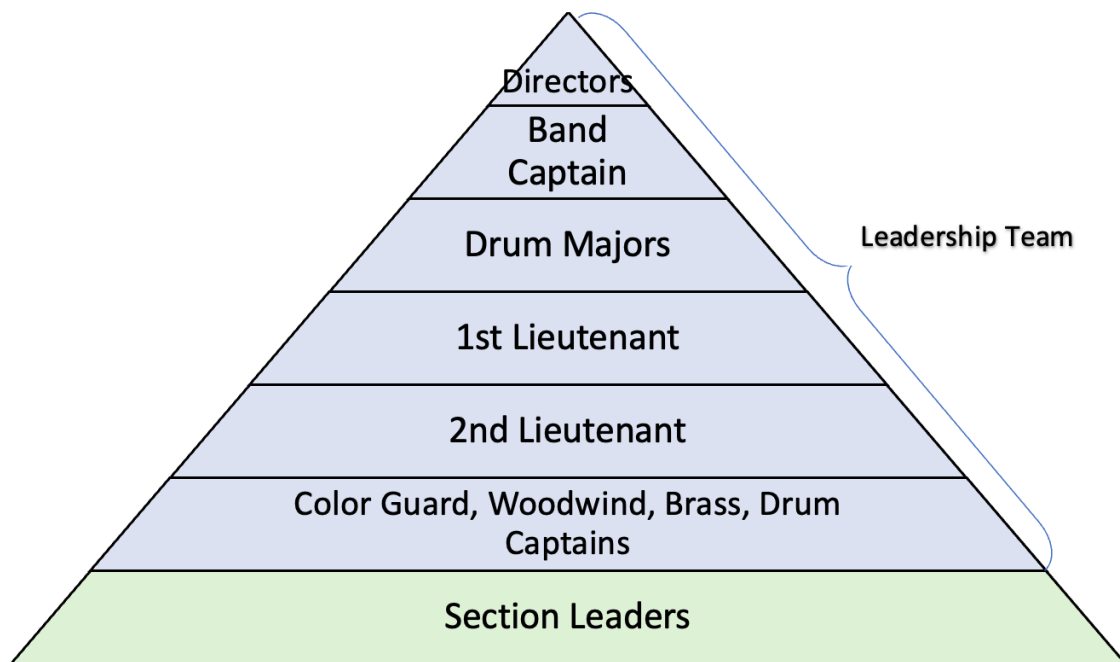
Josh Menard
Percussion/Assistant Band Director
Jos509@rcsd.ms

Nick Papania
Assistant Band Director
Nic510@rcsd.ms

Band Chain of Command

The leadership structure of the Big Red Band is set up in a hierarchy. Any issues that arise should be taken care of at the lowest level possible! Something should never come to the Band Directors if it could have been handled by a Section Leader.

Band Council



The Directors and Instructors will work very hard to make this the best year for all of you. We ask that you cooperate with us by working hard, being on time, listening, and pushing yourselves to greatness, while enjoying your time in the band and making memories. Remember, we are there to help you achieve excellence.

Discipline

The Directors want this band to be very proud of who they are and what they accomplish. This pride should be built on self-discipline, sincere respect for other people, hard work, and high standards of personal conduct and performance. You should always be mindful that you will be treated as a mature, responsible person, and you are expected to act like one. Also, you will be treated with respect, so you should likewise treat others with respect. You will be held accountable for your own actions.

As a representative group of Florence High School, the band must follow the school discipline code. These rules are included in this handbook and may also be obtained through the Band Office.

Disrespect to any staff member, parent volunteer, or fellow student will not be tolerated and will result in disciplinary action. Do not question the staff, directors or parents! What they say is the law! They are there for your benefit.

Students are to be at designated areas during all practices and activities on time. Any departures or absences, without prior permission from the Band Director, are grounds for disciplinary actions.

Disciplinary options for The Florence High School Big Red Band members include, but are not limited to:

1. Lowering of Grade
2. Parent conferences
3. Those found in the School Disciplinary Code
4. Dismissal from the Florence High School Big Red Band

The following are a few reasons for dismissal from the band program: Drug or alcohol violation of any kind and consistent absents.

Attendance Policy

In order for this Band to achieve greatness, it is important that we use our practice time wisely. Your commitment to this band will be directly affected by your attendance and preparation for each Scheduled Band Activity (SBA). An SBA is an activity that is scheduled on the calendar. SBA's include rehearsals and performances. If changes are required, we will do our best to give you ample notice. The attendance policy will go into effect upon the **first day of Band Camp**. The band as a whole is like a chain; one weak link will cause the chain to break and the band will fall short of its goals. Each person in the band is important, and it is essential to be present at each SBA.

There are unavoidable absences. These must be cleared at least one week in advance with the Director. The only event that will be permitted after the absence is an emergency. An absence will be considered excused if:

- You have a medical emergency, accompanied by a physician's note
- There is a death in your family
- You have a personal illness, accompanied by a physician's note
- An unavoidable academic or school related conflict at Florence High School

If at all possible, please let us know when an emergency occurs, so we do not worry or wonder where you are.

The following procedures will be followed for absences from an after-school rehearsals:

One unexcused absence will result in a 50 out of 100 summative grade. Examples of unexcused absences are homework, work, practices that were not approved, going to sporting events, etc. Practices are not scheduled as punishment, but to make you better, and all rehearsals are equally important.

If a student is absent (unexcused) from school on a Friday of a football game, that student may not participate in said football game. This will result in an unexcused absent from a performance. (MHSAA Rule)

If absent from an after school rehearsal, you **MUST** bring a signed note to the next practice, no later. The note must be submitted to Mr. Robinson for the absence to be excused. If you do not bring a note your absence will be unexcused.

The following procedures will be followed for absences from performances:

One unexcused absence will result in a 0 summative grade in the grade book.

A second unexcused absence will result in a removal from the band program.

Any student missing any portion of Band Camp without a prior notice to Mr. Robinson will be subject to immediate removal from the show and/or removal from the program. These practices are imperative, because this is when we will learn the majority of the show. If you miss these practices, you will fall behind. **Parents, please plan vacation around Band Camp.**

Tardiness to or unapproved early dismissal from rehearsal is grounds for disciplinary action. More than three tardies or leaving early will be grounds for parent conference. Consistent tardiness to rehearsals and performances impedes the flow of the band's progress and negatively affects the morale of the organization.

In the event that a student belongs to an out of school related organization, **the Florence Big Red Band will take precedence.**

Employment is not an excuse for missing a rehearsal or a performance. Any student who misses a rehearsal or performance due to work will be charged with an unexcused absence and subject to the above attendance policies.

The attendance policies above apply to all Big Red Band rehearsals and performances, football games, parades, and special events.

Each student is expected to come to each rehearsal and performance prepared and ready to participate to the fullest of his or her ability. Any student that comes to a rehearsal or performance and does not actively participate will be subject to disciplinary action. This includes, but is not limited to: forgetting an instrument; not having a reed, mouthpiece, sticks, mallets, batons, or flags; not having music; or not having the correct shoes for marching, etc. (Students that have medical excuses or verified instrument repair issues will be exempt from penalty.)

School Owned Instruments/Equipment

Students are expected to take excellent care of all equipment regardless of ownership. School Owned Instruments will be issued to specific members. Once issued, students are responsible for that instrument. If damaged, depending on the severity, students will be responsible for repairs. To cover minor damages, each student that will be using a school owned instrument (percussion included) must pay a rental fee of \$50 a semester. This fee helps to offset the expenses of maintenance from year to year.

Color Guard – Marching Band

To participate in the Marching Band Color Guard, an incoming 9th grader or older may audition. Each student that makes the guard must pay a fee of \$200 to cover his/her uniform for the marching season. This fee is in addition to their Fair Share/Band Dues. Each student must pay their fee before they receive their uniform. Students are also expected to complete a Color Guard Contract.

Indoor Ensembles

Both Indoor Percussion and Indoor Color Guard will have separate Dues. Students interested in these ensembles will receive a handbook detailing those dues and other expectations.

Band Hall Etiquette

The Band Hall is the home of our band. It is to be kept neat, clean, and clutter free.

Some Band Hall rules include.

- Gum Chewing will not be allowed as it damages the instruments. Gum can also damage the carpet, stands, and chairs in the band hall.
- Just as gum, food is also not allowed in the band hall as it can also damage horns and the band hall in the same way.
- As a member of the band, you are considered ladies and gentlemen. No profanity or profane language is to be used by members of the band.
- Fighting in any way is not to be tolerated in the band program.
- The instruments and members of the band are very important. So, no horseplay is to be carried out in the band hall.
- Only Band Members, Band Directors, Parents, and Administrators are allowed in the band hall.
- Our band hall is not only our home, but also part of the High School campus. No writing or drawing on any school property.
- Students have worked hard on their instrument to understand how to play and care for it. No one should play any instrument that is not your own.
- Only good attitudes (Leave your bad mood at the door.)
- Any clothes that are left in the floor are considered trash and will be disposed of. If you have something important take it with you.
- The Instrument cubbies are to be kept clean. No trash should be left in cubbies. Any loose paper may be disposed of.
- Any destruction of property will be paid for entirely by the student. If payment is not collected, a hold will be placed on that student's grade.

Destruction of property may include and is not limited to:

- Writing on walls
- Writing on stands
- Writing on chairs
- Any broken instruments due to horseplay or poor behavior

Rehearsal Etiquette

A well-defined and executed rehearsal technique has a direct impact on the success of the group. It is expected that all members adhere to the following rehearsal etiquette.

Be in the right place at the right time with the right equipment. You should have the following items with you at all rehearsals:

1. Instruments, Sticks, Mallets, and Flags.
2. Pencil; you will need to make notes on your music and/or drill at every rehearsal. It is very difficult to remember everything from rehearsal to rehearsal. Year-round!
3. Drill Sheets (Marching Season)!!!!!!
4. Water Bottles; this is very important. Marching Band is a physically taxing activity, and you will need water. Members should have their own water jug or bottle, especially in the summer months.
5. All band members should dress comfortably and appropriately for all rehearsals. It is important for you to realize that we will be outside and moving at nearly every rehearsal. It is also up to you to watch the weather forecast and to dress for it. Appropriate clothing for rehearsals include: **t-shirts, shorts, sweats, and tennis shoes** (no sandals, dress shoes, or boots).

- In order to have the most productive rehearsals possible, the instructional staff has established guidelines for etiquette during rehearsals. The following guidelines are needed to keep order, and thus make efficient use of rehearsal time. At no time do we wish to convey a boot-camp type of atmosphere, but these few guidelines are absolutely necessary to avoid wasted time and undue lack of concentration.
- Due to the large area in which we work, it is essential that the majority of the talking be limited to the staff. Corrections and instructions will come from the top of the stand first. The Drum Major may repeat the instructions for the continuation of rehearsal. Questions are expected and encouraged under proper circumstances; simply raise your hand.
- When you are given a break, please take it!! **Do not play your instruments during scheduled breaks.**

Performance Etiquette

Do not be late. All times to perform or rehearse before a game, competition, or other event will be announced prior to the event.

During Marching Season, members should march to and from the stadium with pride. The uniform is to be worn PROPERLY at all times. Your performance begins as soon as we march to the stadium or get off the bus for a parade or competition. It does not end until the Director or Drum Major dismisses you. Do not break ranks until instructed to do so. When marching in ranks you should stand tall and proud. Do not let anyone outside of the band cut through the ranks. Do not talk when marching in rank!

You may not eat or drink in your uniform, except for water. Accidents may occur unexpectedly that may soil, stain, or permanently damage your uniform. You will be instructed at performances as to when it is appropriate to remove your band jacket and shako to get something to eat and drink.

While at a performance it is imperative that you sit with your designated section. This not only gives the band a uniform look, but also is crucial in maintaining a well-balanced and consistent sound.

Do not lean or sit on anything that will soil, tear, or snag your uniform.

Never run in uniform. There is always a possibility of falling and ripping the uniform. There is never a reason to run. If you plan ahead, you can always take your time to reach any destination required.

There are to be no visitors in the stands during a football game. Only current Florence High Big Red Band members, chaperones, instructors, and administrators are allowed in the band's stands. This is important from a safety standpoint. There will be no exceptions to this rule.

The general rule is that if you have any questions regarding whether you should or should not be doing something in uniform, **DO NOT DO IT!!** When you are wearing the uniform, you are not looked upon by others as an individual, but rather as a part of the Florence High Big Red Band. Most of the spectators and band members from other groups, who will see you behind the scenes, will form their opinion of the entire band from observing your behavior in uniform

Dress attire at all concert performances will be the school issued Formal wear. Students not in correct attire will not be allowed to perform.

PARENTS' RESPONSIBILITY TO THE BAND

It is the responsibility of every parent and guardian to see that the policies outlined in the HANDBOOK are followed and that the forms are signed and returned. This states that you UNDERSTAND the policies therein, and that any questions are to be directed to the Band Director by making an appointment. Each parent IS responsible for the attendance of his/her child at all band functions. It is the responsibility of each parent to ensure that their child practices his / her instrument daily. The hands of the directors are tied without the help of parents.

HOW PARENTS CAN HELP

When a “band question” arises, it is important that you get factual information before discussing it with others. We do more harm to ourselves, the band family, when we talk about things that contain one or more “falsehoods” but consider them facts. If questions arise, it is important to remember this axiom: If it is a performance issue or anything dealing with the band program, contact a director. If it is a fundraising question or Band Dues question, talk with the Booster Club President.

- Show an interest in the music study of your child.
- Arrange a regular time for your child to practice.
- Find a quiet place where he/she can practice without interruption.
- Listen to performances of practice material when asked to do so.
- Help the student keep a DAILY RECORD of practicing.
- Initiate a reward system for DAILY practice.
- **Keep the instrument in good repair and keep at least three reeds in the case; get a metronome!**
- Be extra careful with school-owned instruments. Repair costs are high!
- **Pay Fair Share/Band Dues.** We cannot operate if these aren't paid in a timely manner.
- Teach your child to be prepared and on time to each rehearsal or lesson.
- Provide private instruction!
- **Make faithful attendance at all band activities a priority.**
- Buy your child a personal planner for marking important dates.
- Keep the Handbook in a safe place and refer to it often.
- Notify the teacher if the student is to be absent for rehearsals or lessons.
- Double-check behind the student to make sure that they have their instrument.
- If student is absent, make sure that their music gets to school if they share it with someone.
- **Attend booster meetings, concerts, games, and contests.**
- **Turn in fundraising money on time.**

As band directors, our door is always open to parents and students. If there is ever a concern about your child or the band in general, please come see a director. We will do anything we can to help.

Band Dues explained.

The band operates almost entirely independent of the finances of Florence High School. Therefore, the band has significant financial burden from year to year. This cost is passed on in the form of dues/fees to the students wishing to participate. Each high school band student is required to pay **\$350 annually** in Band Dues. (Yes, we know \$350 seems high, but as we researched what other bands of our size are charging in our area, we found that even with an increase we still have one of the lowest dues cost!) These dues/fees are considered their “fair share” of the cost and is shared by all members. Some of the items “fair share/band dues” pays for:

Travel/Trips/Competitions – The band does not receive compensation for travel to away games and our Marching Band and Concert Band evaluation. The band pays for all travel. These travel expenses include paying the driver(s) of the bus(es). The band also has to pay to participate or compete at any event we are attending. Further, we do not receive compensation for the transportation of the band trailer nor maintenance, upkeep or fuel to move it.

Marching Band Staff – Teaching a marching band show requires the expertise of trained staff members to make for a high-quality product that we are committed to producing.

Show – Each year, we purchase/pay for the materials necessary to create a marching band show to include: Music, Drill, Choreography, Copyrights and props if needed.

Music – From stand tunes to concert music, all must be purchased to play. The school does provide some financial help here. Although there is assistance, music is expensive. The band typically uses what money is provided and then some just to get us through the year.

Instruments/Maintenance – Maintenance and care for our instruments is incredibly limited. The district does provide a small amount of money for instrument maintenance and is used up prior to accessing any band funds for this. The district does provide financial contribution to the purchase of instruments each year and it is used to replenish needs or plan for future needs.

Uniforms – Uniform (Jacket and Shako) upkeep and modifications are paid entirely by the band. Bibbers and Guard uniforms are considered consumable by the members and are paid for entirely by the members aside from Dues. When new Uniforms are needed, they are very expensive.

Booster Needs – The boosters have a number of expenses they need to cover in order to provide for the needs of the band. This includes software for accounting, office supplies, and maintenance of booster equipment. These needs are limited.

Food – The Band Boosters provide meals, snacks, and drinks for all students for each football game (home and away) and contests. There are a lot of kids...there is a lot of food.

Band Dues/Fees FAQ

Q: What fees can I expect as a band parent?

- A:** 1.) Yearly band dues for all band students. (See Handbook Section *Yearly Band Dues Explained* on page 11.)
- 2.) Students will be expected to purchase their bibs (pants) and shoes for their marching uniforms. The estimated cost for both items is \$150. Once purchased, these items belong to the student and the student is responsible for the cleaning and upkeep of them.
- 3.) Students will be expected to purchase their concert attire. The estimated cost for this is \$75 for females and \$100 for males. Once purchased, these items belong to the student and the student is responsible for the cleaning and upkeep of them.**
- 4.) If your student plays a school owned instrument, there are semester fees. (See Handbook Section *School Owned Instruments* on page 6.)
- 5.) If your student chooses to participate in extra ensembles (i.e. color guard, indoor percussion, drum major, winter guard, etc.), there are fees for those groups. (See Handbook Section *Color Guard* on page 6.)

Q: Why the increase in Band Dues for 2022-2023?

A: As we all know, everything costs more these days! To keep up with the economic inflation, dues had to be raised. Also, ALL students will receive a meal and drink at all football games (home and away), and a meal/snack and drink(s) at all marching contests. No more paying for meal plans. Your dues cover all meal costs!

Q: Is there financial assistance in paying for dues/fees?

- A:** Yes. There are several ways the Boosters have to help families pay their dues.
- 1. Fundraisers.** The Boosters offer numerous fundraisers throughout the year that students can choose to participate in. Fundraiser profits will be split 50/50 between the student's account and the Band Boosters' General Fund.
 - 2. Concession Stand Work Credits.** Parents can earn \$20 per high school football game. High school students and parents can earn \$10 per middle school game. Workers must check-in upon arrival and stay for the duration of the game (to include clean up). Concession stand work credits are applied to the student's Charms account toward dues. No dues credits from concessions can carry forward to future years. A maximum of \$100 in concession stand credits can be earned per student per year.
 - 3. Sibling Discount.** Families with multiple students in band will receive a \$100 credit per child. (Example: 1st student = \$350; 2nd student = \$250; 3rd student = \$150.)
 - 4. Early Payment Discount.** Families who pay their next year's dues in full prior to the last day of the school year will receive a \$50 credit. (Example: If 2023-2024 dues are paid in full prior to the last day of school for 2022-2023, the student will owe \$300.)
 - 5. Scholarship Program.** If your student is interested in applying for a scholarship, please see a director for an application.

Q: Can concession stand credits be rolled over from school year to school year?

A: No. Since concession stand credits are not real money, due to accounting and tax reasons, we are unable to carry over those credits. However, profits earned from fundraisers may carry over to the next school year. NOTE: The Booster's operating fiscal year runs from June 1 – May 31 each year.

Q: Can a credit on a student account be cashed out?

A: No. Credits that can be carried over in a student account from year to year will be. However, any credit still on a student's account their senior year or if they decide to quit band, will be rolled over into the Booster's General Fund. No money will be issued back to parents for credits.

Q: What happens if my Band Dues are not paid?

A: By signing the *Commitment Contract* in the Handbook, each family is acknowledging their financial responsibility for their student(s) to participate in the Florence Band Program. Statements will be emailed to parents so that they can see current balances throughout the year. Students with unpaid Band Dues will not be allowed to participate in any ensembles/groups that require fees in addition to the yearly band dues. Also, if a student has outstanding band dues/fees, they will not be allowed to participate in their graduation ceremony. With that said, it is the desire of the directors that any parent or student who struggles with the financial responsibility would come speak with the directors long before unpaid band dues/fees keeps a student from walking at graduation.

Q: Why is each family requested to work the concession stand?

A: The football concession stand is the Band's biggest money maker! It takes lots of help each week to run it. So, to help "share the load," we need everyone's help!! There are a variety of roles that need filled each week...order takers, runners, burger wrappers, grillers, fryers, nacho maker, cleaner, etc. Yes, it may be "work", but we have a really good time getting to know other band parents while we all serve and support our students!!

Charms

Charms Office is used to manage student's band dues. Each high school band student has an account with a running ledger. You may log on and view your account at any time. Payments may also be made through Charms.

How to access parent/student information in Charms

- Log on to www.charmsoffice.com, and click "ENTER / LOG IN" in the upper right corner.
- Locate the "PARENT/STUDENT/MEMBERS LOGIN" section of the web page.
- Login to your student's program account using the following School Code:

 FHSBigRedBand

Entering the school code and selecting "Enter Parent Area" will bring up the main "Public" page.

This will allow you to look at the "public" calendar for your organization, event list, and handouts and other "publicly shared" files, as well as a few other options.

You will access your student's information by entering your password under "Student Area Password." Please enter the password you created at the time you received your "Reset Password Link" email. Whenever you enter using your School Code and password, another more detailed screen appears with various button options for you to access areas in the Charms account. What appears here is partially up to the Account Administrator or Head Director. Two areas in which you can help the director/administrator maintain his/her records:

- Update Personal Information – If the director has allowed it, you may help make changes to you and your child's student information page (such as updating phone numbers / cell carriers and email addresses if they change) to help them communicate with you more effectively. You may also be able to indicate which parent volunteer/resource groups you would like to participate in, if this feature is activated. Click Update Info to save changes.
- If your program has set up online credit card payments, you can make credit card payments for fees, trips, and deposits to your student's account. Click Finances -- if credit card payment is activated, you will see blue buttons in the four main areas of the financial statement indicating your ability to make online payments.

Stay Connected!

There are a few ways to stay updated with upcoming event, news, and other important information. All information will be told to your student as well as sent out via remind.

1. Your Student – Students are told ALL information that is uploaded to Remind, Facebook, and Band Website. They are your best source of information.
2. Remind – Remind is a text messaging service that allows Directors to send out important information directly to students and parent’s phones. **We strongly recommend joining.**
 - a. Codes vary by graduation class (see band website for codes).
3. Official Big Red Band Facebook Page –This serves as public page for directors to post pictures or videos of the band.
4. Booster Facebook Page – The Booster’s Facebook page is where you can upload your own pictures as well as find information regarding fundraisers.
5. Band Website – The Band website stays updated with all upcoming events and also has a copy of this handbook.
6. Booster Meetings – Every band parent is considered a member of the FHS Band Boosters. The Boosters meet every third Thursday of the month at 7pm. All parents are welcome and encouraged to attend.



Band Website



Official Band
Facebook Page



Band Booster
Facebook Page

Band Camp Schedule 2023 - 2024

July 7 – Required Parent Meeting

July 10 & 11 - **Freshmen, Guard, Percussion, and LT only**

July 12 – 14 - **All Band Members**

July 17 - 21 – **All Band Members**

TBA – Shoe and Bib Day (All Freshmen and new Band members will need to purchase Shoes and Bibs. Cash or Money Order Only.)

July 20 - Parent Show - 6pm – BRB Band Field

Rehearsal time: 8am – 5pm

Lunch Daily (not provided): 11:30am – 1pm

Percussion may have additional days scheduled.

1st half of Band Dues are due on the 1st day of Band Camp.

(Balance must be at or below \$175. Students will not be in the marching show if balance is above \$175. NO EXCEPTION)

Guard uniform fees are due before uniforms will be given out. (Students will not be allowed to perform until paid.)

Tentative Schedule

Fall 2023

Full Band After School Rehearsal - every Monday & Thursday 3:25 – 5:00

Color Guard and Percussion may schedule additional rehearsals.

Parent/Booster Meeting every third Thursday of the Month at 7pm.

TBA – Meet the Eagles (attendance required)

August 25 – Football vs. Forest Hill

September 1 – Football @ Ridgeland

TBA – Homecoming Parade (typically on Thursday)

September 8 – Homecoming vs Magee

September 15– Football @ Mendenhall

September 22 – Football vs. Holmes Central

September 23 – C.D. Hagan Invitational (Brandon H.S.)

September 29 – Football @ Hancock

September 30 – Titan Marching Invitational (Ridgeland H.S.)

October 6 – Football vs. Brookhaven

October 7 – State Marching Festival (Pearl H.S.)

October 13 - Football @ North Pike

October 20 – Football @ Natchez

October 27 – Football vs South Jones

October 28 – State Marching Championships (Location TBA)

November 2 – Football @ Provine

November 10 – Playoff Game – TBA

November 17 – Playoff Game – TBA

November 24 – Football: South State - TBA

December 5 – Christmas Concert

TBA – Christmas Parade

Tentative Spring Dates

March 13 – 17 – Universal Trip

March 4 - 8 – MHSAA Concert Band Evaluation

Future Band Camp Dates:

2024 – 2025: July 15 – 19 & 22 – 26

2025 – 2026: July 14 – 18 & 21 - 25

Commitment Contract

I have read the Florence High School Band Handbook and understand the rules, regulations, and attendance policy. I have noted the performance and rehearsal schedule and have included them in my personal schedule. I understand that participation in Marching Band requires mandatory attendance at band camp, rehearsals and performances. I understand that music and choreography must be memorized. I understand that if I do not meet these obligations, I will not be guaranteed a spot in the marching band show. I realize that I may be dismissed from Marching Band or Concert Band for poor attendance or unexcused tardiness. **I understand Band Dues/Fair Share (\$350.00) must be paid in a timely fashion.** I realize the importance of this commitment and agree to abide by these conditions for the 2023 - 2024

Student Signature: _____

Parent Signature: _____

Date: _____

Please Return

**FLORENCE HIGH SCHOOL BAND, FLORENCE, MS
2023 – 2024 MEDICAL INFORMATION FORM**

STUDENT _____

SEX (M) (F) BIRTH DATE / / INSURANCE CARRIER: _____

PARENTS _____ POLICY #: _____

.....
PLEASE COMPLETE THE QUESTIONS BELOW. It is imperative that we have medical information in order that we may care for the student in case of emergency.

1. **DOES THE STUDENT HAVE CHRONIC HEALTH PROBLEMS?** _____

2. **IS THE STUDENT ALLERGIC TO ANY MEDICINES?** _____

3. **DOES HE / SHE HAVE ALLERGIES?** _____

4. **IS HE / SHE CURRENTLY TAKING ANY MEDICATIONS?** _____

5. **WHAT IS THE DATE OF THE STUDENT’S LAST TETANUS SHOT?** _____

6. **PLEASE LIST ANY ADDITIONAL PERTINENT INFORMATION** _____

FAMILY PHYSICIAN _____

TELEPHONE & ADDRESS _____

In case of minor illness, the Florence High School Band Director or chaperones of the Band Boosters have my permission to give over-the-counter drugs such as Tylenol, Maalox, Sudafed, Ibuprofen, or Dramamine to my son / daughter.

YES _____ NO _____

Please Return

**FLORENCE HIGH SCHOOL BAND, FLORENCE, MS
2023 - 2024 CONSENT FOR MEDICAL TREATMENT**

TO WHOM IT MAY CONCERN, I, the undersigned parent or guardian of:

Name of Student

Date of Birth

Hereby grant authorization to the Band Director or any chaperone of the Florence Band Boosters standing in loco parentis, to obtain any emergency medical and/or surgical procedures from a physician or hospital emergency room physician on behalf of the above-named minor. For and in consideration of emergency services and goods rendered by or through the attending physician(s), the undersigned hereby guarantees payment in full, immediately upon receipt of the final billing.

Signature _____ Date / /

Parent's Printed Name _____

ALTERNATE TO NOTIFY IN CASE OF EMERGENCY

Name _____

Relationship _____ Phone _____

City _____ State _____ Zip _____

Please Return

Rankin County RECURRING FIELD TRIP PERMISSION FORM

Dear Parent or Guardian:

Because of your child's involvement with band, he / she will be taking part in a series of field trips during the course of the year. An agenda of scheduled trips is contained in the Band Handbook.

All special activity trip regulations, local school rules, as well as those outlined in the Rankin County Students' Rights and Responsibilities brochure will be enforced.

Please be advised that the school will take every precaution to provide for the safety of your child on each trip. You are requested to grant permission for your child to attend and participate. You are also requested to relieve the school, the area and county boards, the administrators, the band director, and chaperones of liability for any accident that may occur on these trips.

**Beau Robinson
Director of Bands**

Dear Mr. Robinson,

**I grant permission for my child, _____,
to go on the trips associated with band according to the schedule in the Handbook
for the year. I relieve the school, the constituent and county boards, the
administrators, the band director, and chaperones of liability for any accident that
may occur.**

Parent or Guardian Signature

Date

Please Return

**FLORENCE HIGH SCHOOL BAND, FLORENCE, MS
2023 - 2024 MEDIA RELEASE FORM**

Florence High School Band may develop, participate in, or be the subject of media-based presentations and events, which highlight various educational activities that take place during the course of the year. These presentations/events are of two types:

- 1. Those developed by Florence High School students, Florence High School Staff, F.H.S. personnel and/or commercial enterprises. They may include but are not limited to;**
 - **Photographs of students and activities**
 - **Slide/tape presentations**
 - **Video of students and activities**
 - **Computer-generated presentations which may incorporate scanned photographs and video clips**
 - **Computer-based productions transmitted via telecommunications**

- 2. These media-based presentations may be used in:**
 - **Faculty and services**
 - **Parent programs**
 - **Staff development activities**
 - **Media festivals (local, state, and international)**
 - **Public relations**
 - **Newspaper articles**
 - **TV presentations**
 - **Florence School District Approved Internet web pages**

I hereby give my permission to Florence High School Band to publish my child's photograph and identification in as well as to publish my child's presentation (as listed above) in any of Florence School District's media-based productions for the above stated purposes.

Student's Name

Parent/Guardian Signature

Date

Please Return