



THE COST OF EDUCATION

**The Role of the
School Board**

**Managing School
Finances**

**Renovations,
Expansions and
Projects**

HSEngaged
Oct. 27, 2022



DISTRICT 1



DISTRICT 2



DISTRICT 3



DISTRICT 4



DELAWARE TWP



FALL CREEK TWP



WAYNE TWP

About Us

Four members are elected to represent their districts and three are elected "at-large." The term is a four-year commitment.

The Board establishes the vision and goals for Hamilton Southeastern Schools, sets standards for the performance of schools and superintendent.

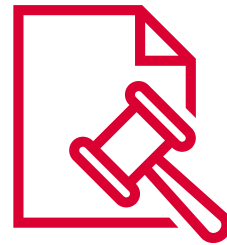
As elected leaders, the Board aims to consistently communicate with the public to keep community members abreast of challenges, ideas and progress.



Key Responsibilities



Hiring the
superintendent



Creating and
adopting policies



Overseeing the
district's budget
and paying the
bills



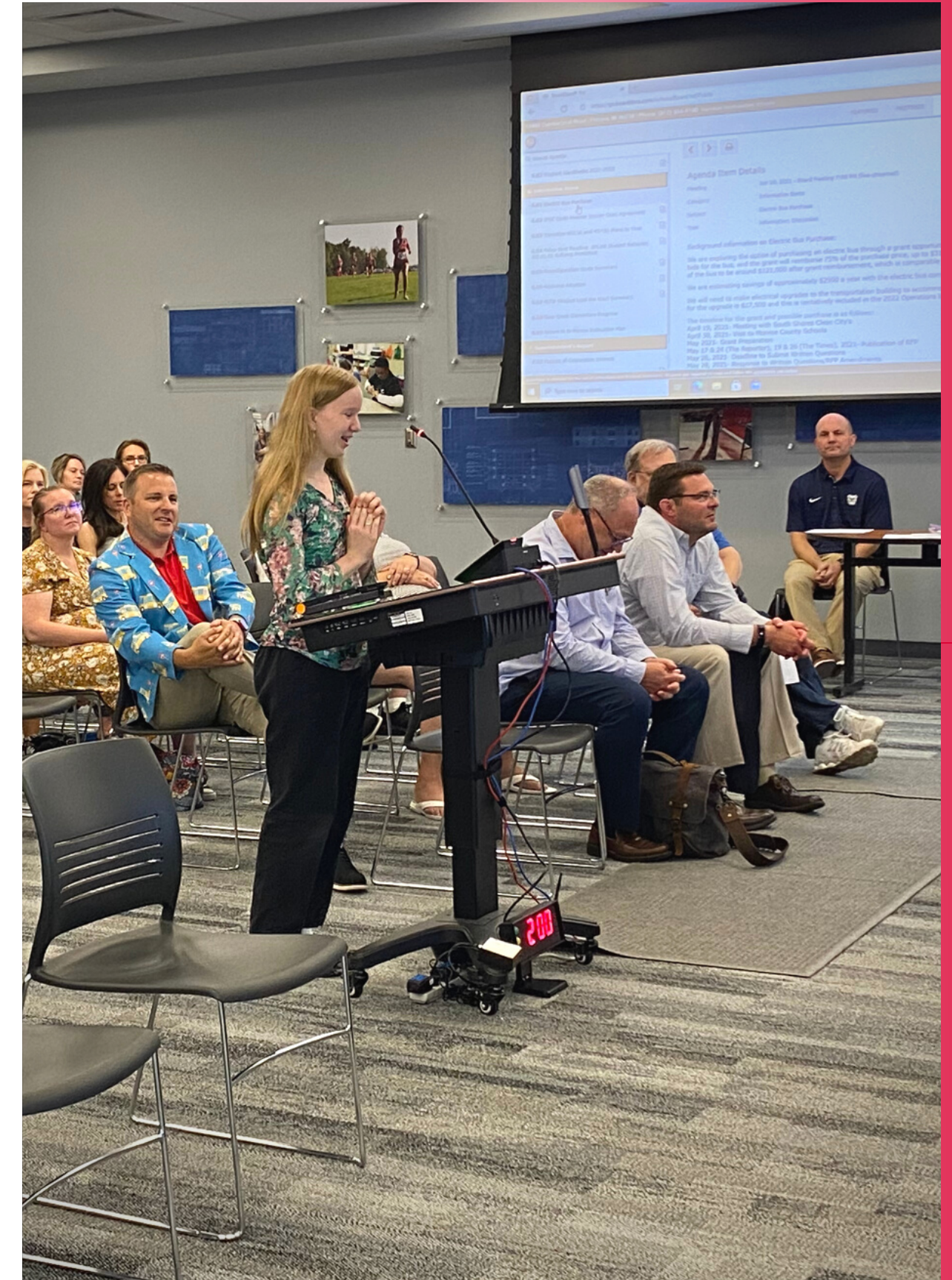
Making decisions
about construction
and buildings

➤ Transparency

The public is encouraged to attend open school board meetings on the second Wednesday and periodically on the fourth Wednesday of each month at 7:00 p.m.

There are established procedures for people who wish to speak or ask questions during the public comment period.

Every regularly scheduled board meeting is broadcast to the public and archived for viewing. A written meeting recap (The Bell Ringer) and official minutes are published to the website.



Addressing the School Board



Public Comment

The public may address the Board on scheduled public agenda items only.

- Statements are not to exceed three minutes (or less).
- Persons must sign the registration sheet to speak. Registration will close five minutes before the scheduled start of the meeting

Public Participation

A person desiring to address the Board on any topic must give at least one week notice to the Superintendent or the Board president prior to a scheduled Board meeting.

- The notice must indicate the nature of the presentation.
- A written copy of the remarks must be given to the Superintendent no later than Wednesday before the scheduled meeting to be shared with the entire Board.
- The decision whether to place the matter on the agenda rests with the Board President and Superintendent.





HSE Facilities 2022

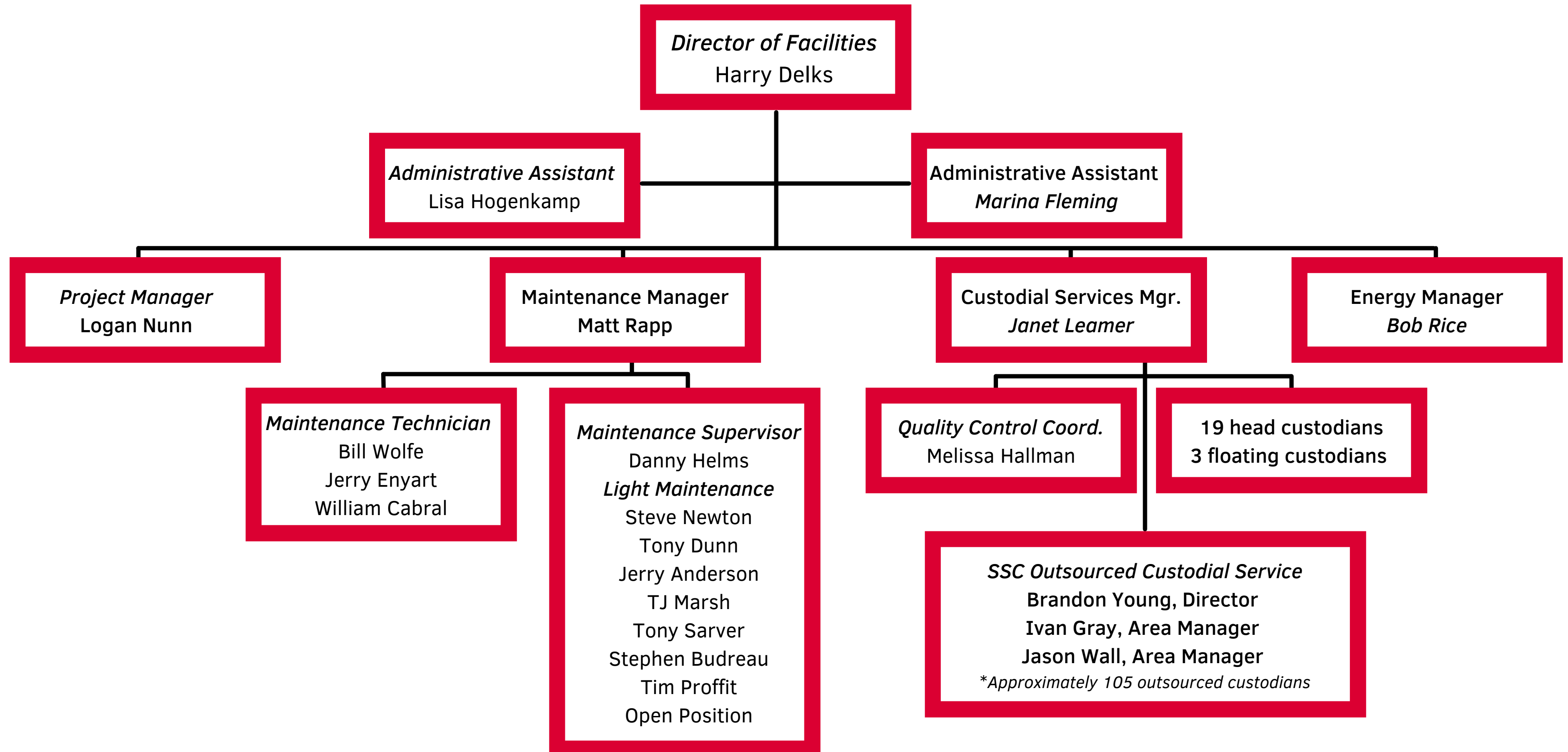
Our Role

Renovations,
Expansions and
Projects

Solar Energy



Facilities Department



HSE Facilities Maintains...



24 School Buildings

962.58 Acres of Property



1 Transportation Building

1 Administrative Building



6 Football Fields

48 Tennis Courts

2 Swimming Pools

28 Gymnasiums

HSE Facilities
averages
15,000
work orders
per year.



Examples of Repair Orders:

- Roof
- Electrical
- Kitchen Equipment
- Windows and Doors
- Plumbing
- Fire Suppression Systems

HSE Schools contains over 10,000 individual pieces of equipment.



Examples of Equipment:

- Boilers
- Chillers
- Air Handlers
- Elevators
- Pumps



To get the most use of the equipment, HSE Facilities implements an extensive preventive maintenance program to extend the usable life of equipment.

Historically, equipment reaches and/or surpasses the expected usable life; but major catastrophes have occurred:

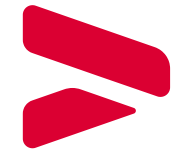


In 2021, Riverside had a catastrophic failure of a chiller resulting in the need to replace it, costing the district \$450,000.



NUM	BUILDING	BLDG SQ FT	ACREAGE	CLASSROOMS	CUSTODIANS PER BLDG
1	Brooks School Elementary	93,333	25	41	3.5
2	Cumberland Road Elementary	79,140	7.8	40	3
3	Durbin Elementary	60,061	23.79	29	3
4	Fall Creek Elementary	81,425	9	37	3
5	Fishers Elementary	66,000	8.8	28	3
6	Geist Elementary	87,498	25.29	41	3.5
7	Harrison Parkway Elementary	78,921	17.97	38	3
8	Hoosier Road Elementary	78,850	20	40	3
9	Lantern Road Elementary	78,921	17.73	36	3
10	New Britton Elementary	78,886	15.92	37	3
11	Sand Creek Elementary	94,000	29.86	38	3.5
12	Southeastern Elementary	93,000	20	32	3.5
13	Thorpe Creek Elementary	94,528	20.99	41	3.5 + 1
14	Fall Creek Intermediate	137,218	23.21	54	5
15	Sand Creek Intermediate	137,218	29.87	54	5
16	Fall Creek Jr High + Focus	183,000	34.1	61	6
17	Fishers Jr High	186,000	21.82	61	6 + 1
18	HIJH – Intermediate and Jr High	200,700	35.3	65	7
19	Riverside – Intermediate and Jr High	338,039	91.8	125	12
20	Fishers High School	733,865	97.6	149	23 + 1
21	Hamilton Southeastern High School	813,000	150.49	171	25
22	Administration	40,772	1.73		2
23	Transportation	18,580	38.65		0.5
24	Academy	4,493		1	0.5
25	Deer Creek Elementary Project – 156 th & Boden Road	102,787	39.86	38	
	Highway 38/Durbin Road Land		161		
	136th between Cyntheanne & Prairie Baptist		20		
	TOTALS	3,925,000	987.58	1,219	136.5 FTE's

Did you know?



Bigger than some cities!

HSE Schools enrollment was 21,561 students (as of Oct. 3)

Roughly 23% of Fishers residents wake up each morning and report for work or class at one of our HSE Schools'.



HSE owns 962.58 acres in Ham. Co.

HSE Schools is approximately 48% developed, and has the potential to have nearly 50,000 students enrolled if all three townships become fully developed.



HSE is approx. 48% developed.

HSE Schools is made up of three townships: Wayne, Fall Creek, and Delaware. Wayne Twp. is the largest, and has the most potential for growth.



Facilities oversees 3,925,000 sq. ft.

That is roughly the COMBINED SIZE of:

- Lucas Oil Stadium (1,800,000 sq. feet),
- One America Tower (1,199,993 sq. feet) and
- Sale Force Tower (905,158 sq feet)

3,905,151 sq. feet



Recently Completed: Deer Creek Elementary

725 Building Capacity
102,787 sq. feet

- Due to growth in Wayne Township, more capacity was needed in this area.
- Durbin Elementary has been repurposed to house other programming. , which will be repurposed for other educational programs.





- Over the course of approximately 18 months (9 phases), all academic spaces will receive upgrades such as:
 - new flooring
 - wall painting after the removal of vinyl wall coverings
 - new ceilings
 - casework replacement
 - new visual display boards
- Building-wide improvements include:
 - LED lighting
 - fire alarm upgrades
 - new data cabling and technology upgrades
- Areas at the west-end of the building, which were part of a 2003 addition and renovation project, will see minor improvements like new paint and new floor finishes.
- Construction started July 2021 and anticipated completion date is late December 2022.



Fishers Junior High had recent upgrades to its corridors and Media Center.

The last major renovation to classrooms was in the 1990s.

- The proposed renovation project will address:
 - finishes
 - casework
 - equipment
 - ceilings throughout the building
- The project expands the front office area, while allowing for a true secure entrance. The change also improves building circulation between the east and west zones.
- Additional features of the renovation include:
 - classroom updates
 - restroom upgrades
 - LED lighting
 - repurposing the FOCUS classroom
 - science lab improvements
 - music area updates
 - collaborative space addition



Fall Creek Junior High has received only a few minor improvements since its construction in 1993.



**Remodeling started in December 2021
and is anticipated to be completed by
July 2023.**

Custodial Services

CUSTODIAL SERVICES ARE RESPONSIBLE FOR ENSURING STUDENTS AND STAFF HAVE SAFE, CLEAN LEARNING ENVIRONMENTS.

Fully staffed = 130 custodians taking care of 25 buildings

- Staffing formula is one custodian for every 26,000 sq. feet
 - Imagine cleaning 8.6 3,000 sq. feet houses a day!

OUTSOURCING CUSTODIAL SERVICES STARTED IN AUGUST 2012.


HSE Schools outsources its custodial needs to SSC

TO ENSURE BEST SERVICE POSSIBLE FROM THE OUTSOURCE COMPANY, HSE EMPLOYS A FULL- TIME QUALITY CONTROL COORDINATOR.

- Biggest challenge right now is staffing and increasing cost of labor
- HSE Custodial Services also implements an integrated pest management plan which includes: shooing snakes, removing raccoons, wiping out wasps, furloughing foxes and ridding rodents

HSE Energy

POLICY AND PROCEDURES

 In 2009, the School Board adopted an Energy Policy (D15.00):

- *The Board of School Trustees believes it is essential that energy conservation be observed in the operation of all school facilities. The Superintendent/designee will establish procedures to implement a district energy policy. Students, teachers, staff, administrators, and facility personnel will be responsible for implementation of the energy management procedures.*

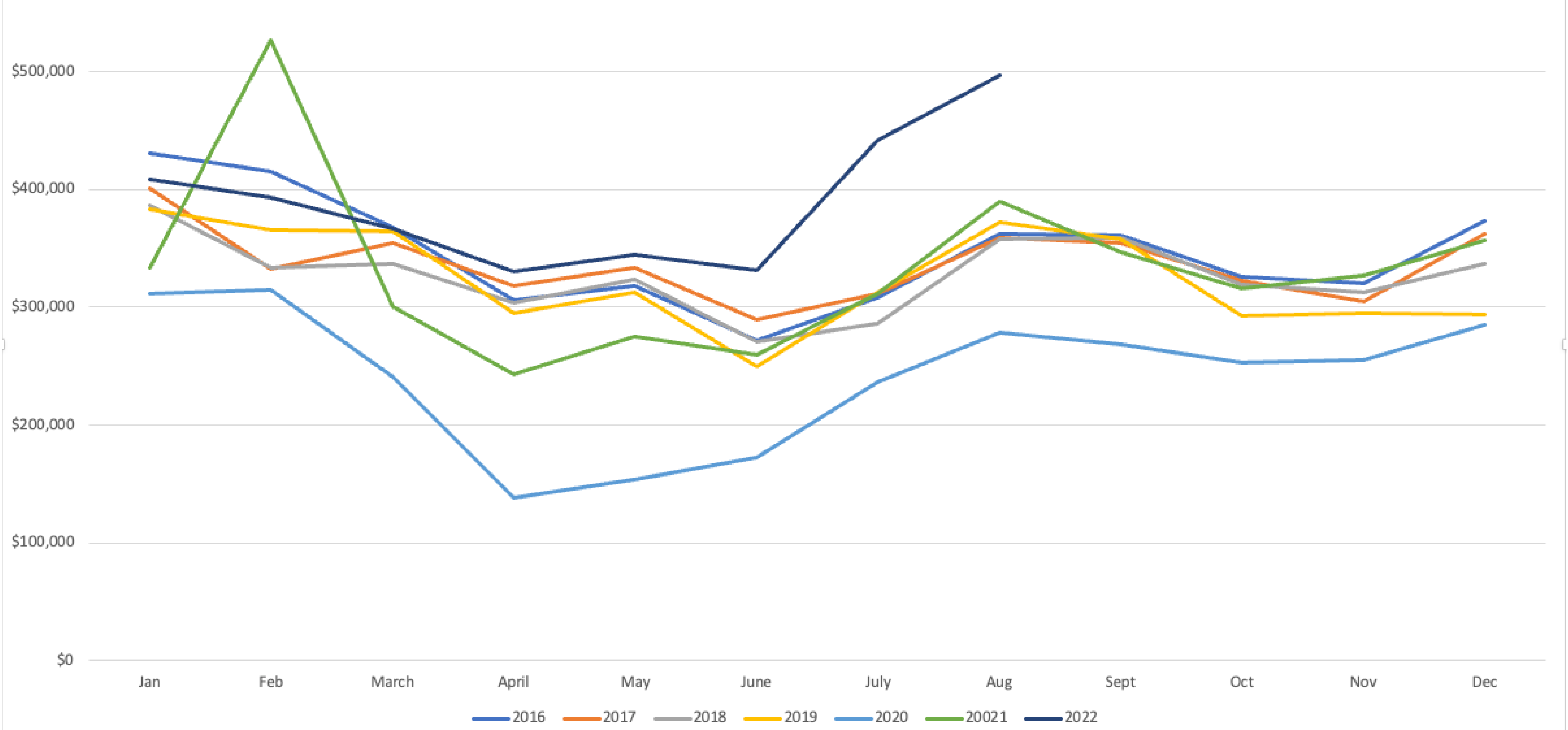
- Established occupied setpoints (Occupied classrooms should average 70-76 degrees)
- Establish responsibilities for teachers, administrators and facilities.

 In 2017, the School Board hired an Energy Manager to help support the Energy Policy:

- *Provide the optimal learning environment for our facility users; while at the same time, lowering costs to the district by tracking energy usage, improving energy management practices, establishing energy protocols, & raising energy conservation awareness among students, staff, teachers, support staff and the surrounding community.*

- Environment
 - Air Quality
 - Energy Efficiency
 - Project Management
- 

Electical and Natural Gas Cost for the District



Price per kWh



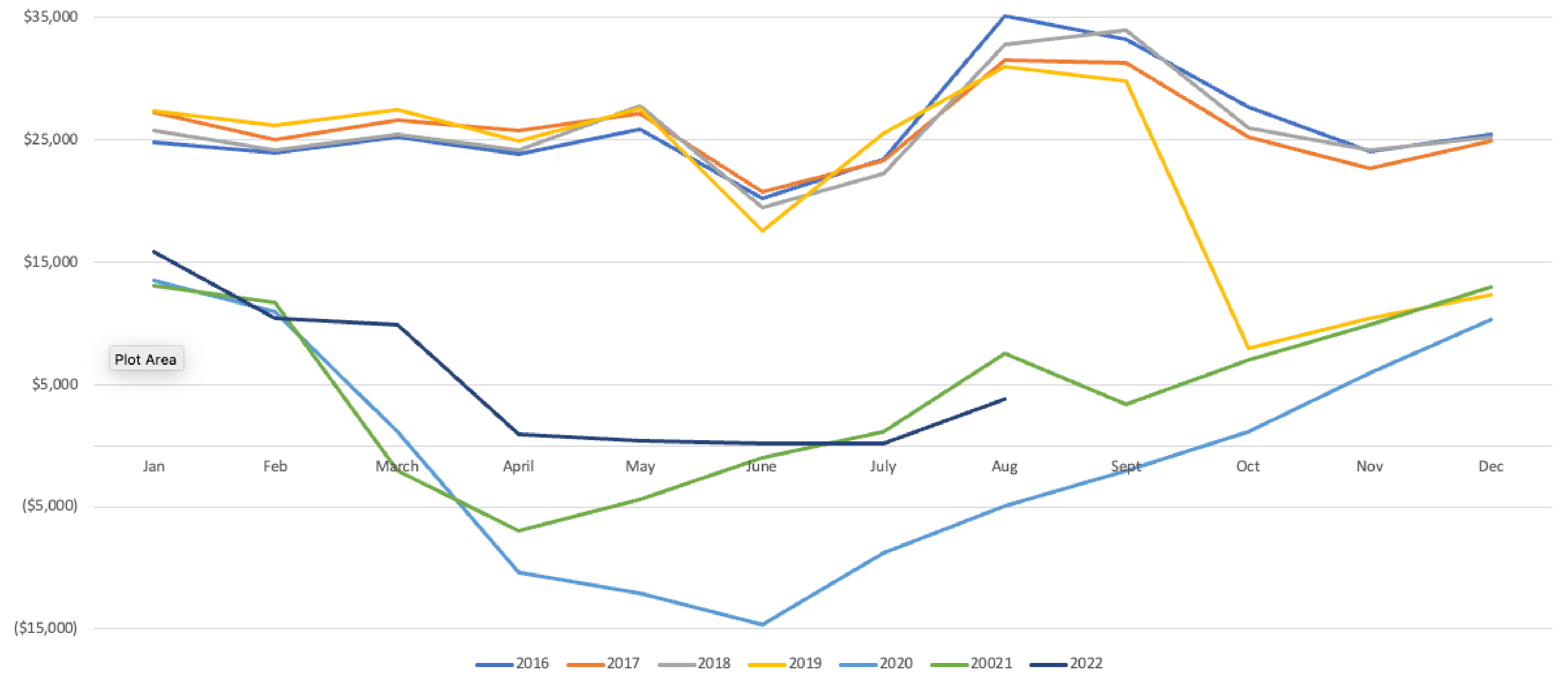
In 2016, HSE Schools was paying on average \$0.0913 price per kWh.

In 2022, we are paying an average of \$0.13 per kWh.

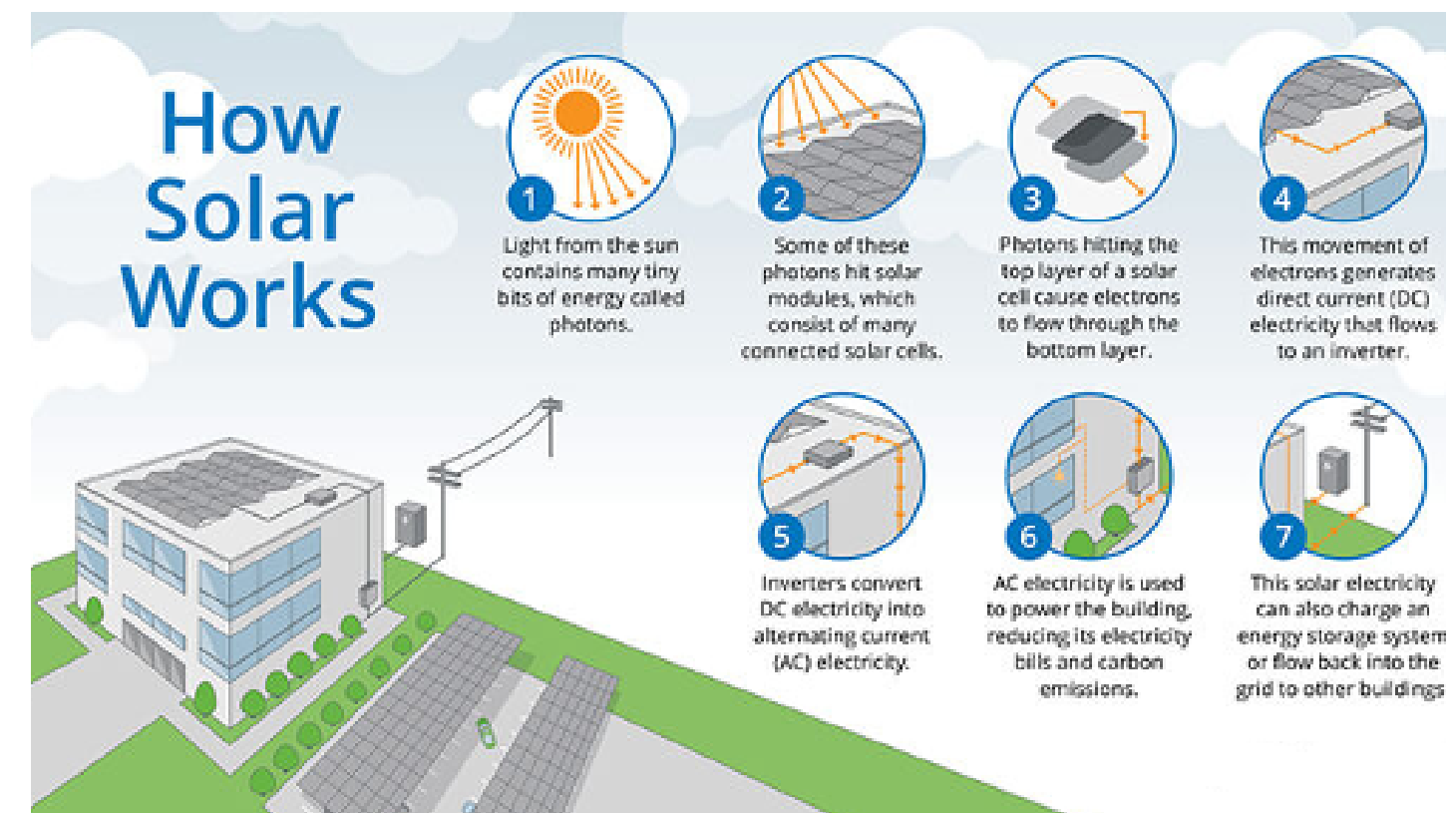
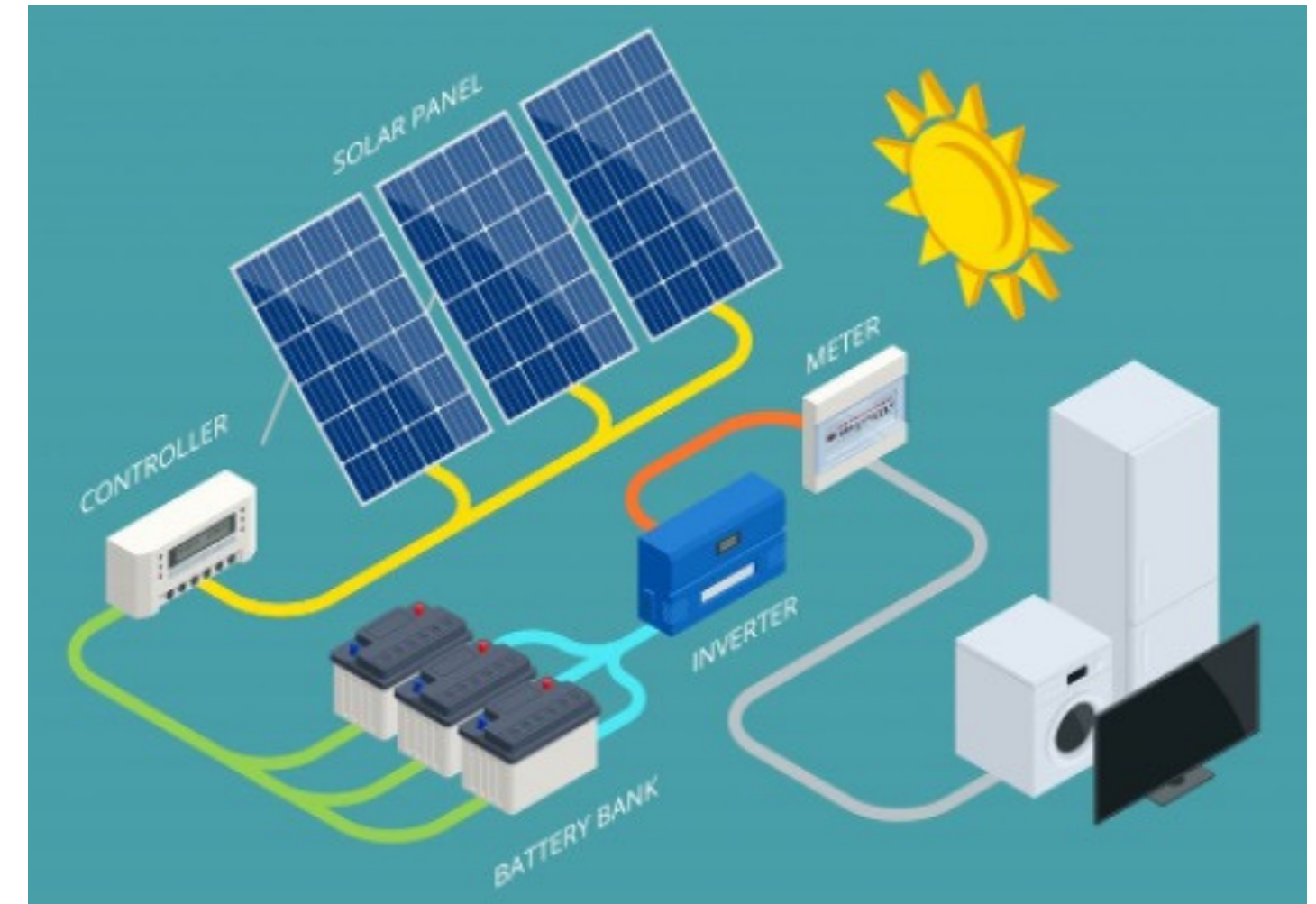
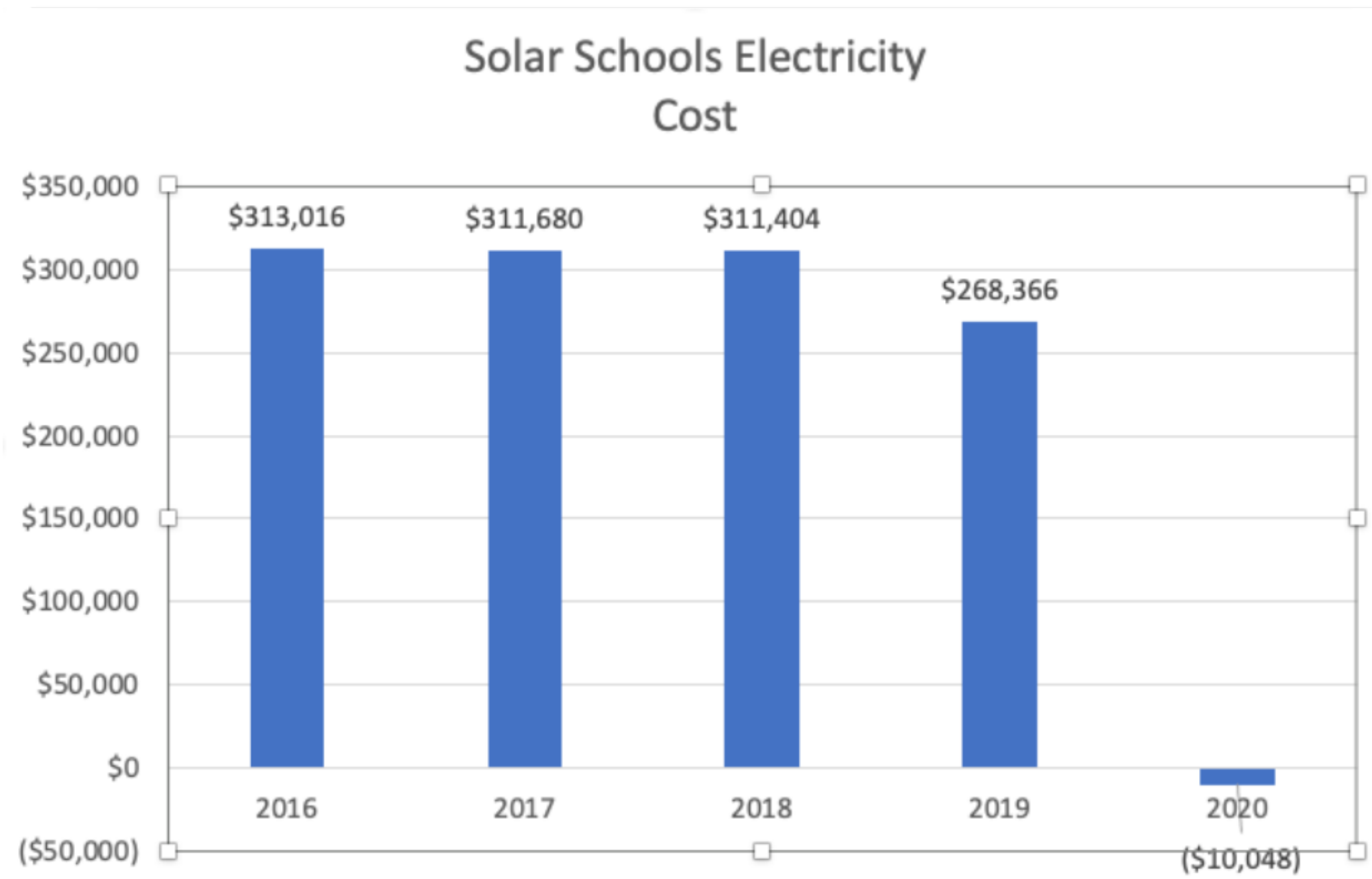
If we use the same amount of energy as previous years, it will cost the district more.

We need to continue to find ways to reduce our energy consumption in order to avoid increase utility costs.

Solar Schools Energy Cost



HOW DOES SOLAR POWER WORK?



**THANK
YOU**