

Welding & Fabrication



Diamond Oaks
Laurel Oaks
Live Oaks
Scarlet Oaks



MORE INFO
greatoaks.com/welding

Skills recommended to be successful in this career pathway:

MANUFACTURING CAREER CLUSTER

ESSENTIAL SKILLS

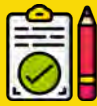
- Oral communication
- Written communication
- Safety awareness
- Physical strength/mobility
- Perceptual speed/clerical & auditory perception
- Reasoning skills/mechanical aptitude
- Visual acuity/depth perception
- Eye/hand/arm coordination/manual dexterity

ACADEMIC SKILLS



APPLIED MATHEMATICS

- Understand coordinate plane
- Use decimals and fractions
- Comprehend 2D/3D objects in space



WORKPLACE DOCUMENTS

- Read/use equipment manuals
- Follow safety guidelines
- Use software to find technical information



GRAPHIC LITERACY

- Read/interpret blueprints and schematics
- Recognize and use welding symbols
- Read/understand gauges

DID YOU KNOW STUDENTS IN THIS PROGRAM...

- * Work with various types of metals
- * Have a high attention to detail and complete work to high standards
- * Follow strict safety guidelines and use PPEs
- * Meet American Welding Society welding standards
- * Work in hot environments with sparks
- * Use a variety of tools including metal cutters and presses
- * Work alone and in teams
- * Complete physically demanding projects
- * Meet high-quality production standards
- * Communicate with clients to understand their needs
- * Visualize in 3D to take something from a plan to reality



COURSES



- Welding Technologies
- Flux Cored Arc Welding



- Welding Fabrication
- Gas Tungsten Arc Welding



VIEW Great Oaks
Course Guide
greatoaks.com/course-guide

**Courses subject to change.*

Welding & Fabrication

IS THIS YOU?



Realistic | Conventional

Realistic personality types are “doers;” they like doing something, as opposed to talking or thinking about it. They like to solve problems in the real world. They are practical, independent, assertive, competitive, and interested in activities that require motor coordination, skill, and strength. Doers with a secondary personality type of “conventional” like to work in organized, independent and structured environments.

Find your work personality type with this free assessment at truity.com:



Holland's Model of Occupational Themes – graphic courtesy of the University of Tennessee.

Key strengths that lead to success in this career path

- ✓ Attention to detail
- ✓ Dependability
- ✓ Integrity
- ✓ Cooperation
- ✓ Independence
- ✓ Initiative

WORK-BASED LEARNING OPPORTUNITIES

- ▶ Job shadowing
- ▶ Job placement
- ▶ Field trips
- ▶ Guest speakers
- ▶ Community service projects
- ▶ Professional training in lab
- ▶ Customer projects in lab
- ▶ Mock interview with professionals

COLLEGE & CAREER READY

Career Credentials

- American Welding Society Certified Welder
- American Welding Society Pre-qualification
- Forklift Operation
- OSHA 10 – Construction
- CPR/First Aid



For more information, visit ohiohighered.org

CAREER PATHWAYS

After earning credentials, get more education and experience to

- ▶▶ Construction welder
- ▶▶ Pipeline construction welder
- ▶▶ Aerospace welder
- ▶▶ Custom/specialty welder
- ▶▶ Welding supplier
- ▶▶ Service technician
- ▶▶ Welding Inspector



VIEW Essential Skills Guides
greatoaks.com/essential-skills

Entry-level pay range in Ohio

\$15 - 29
per hour



Great Oaks alum
Marcus Blanton

