

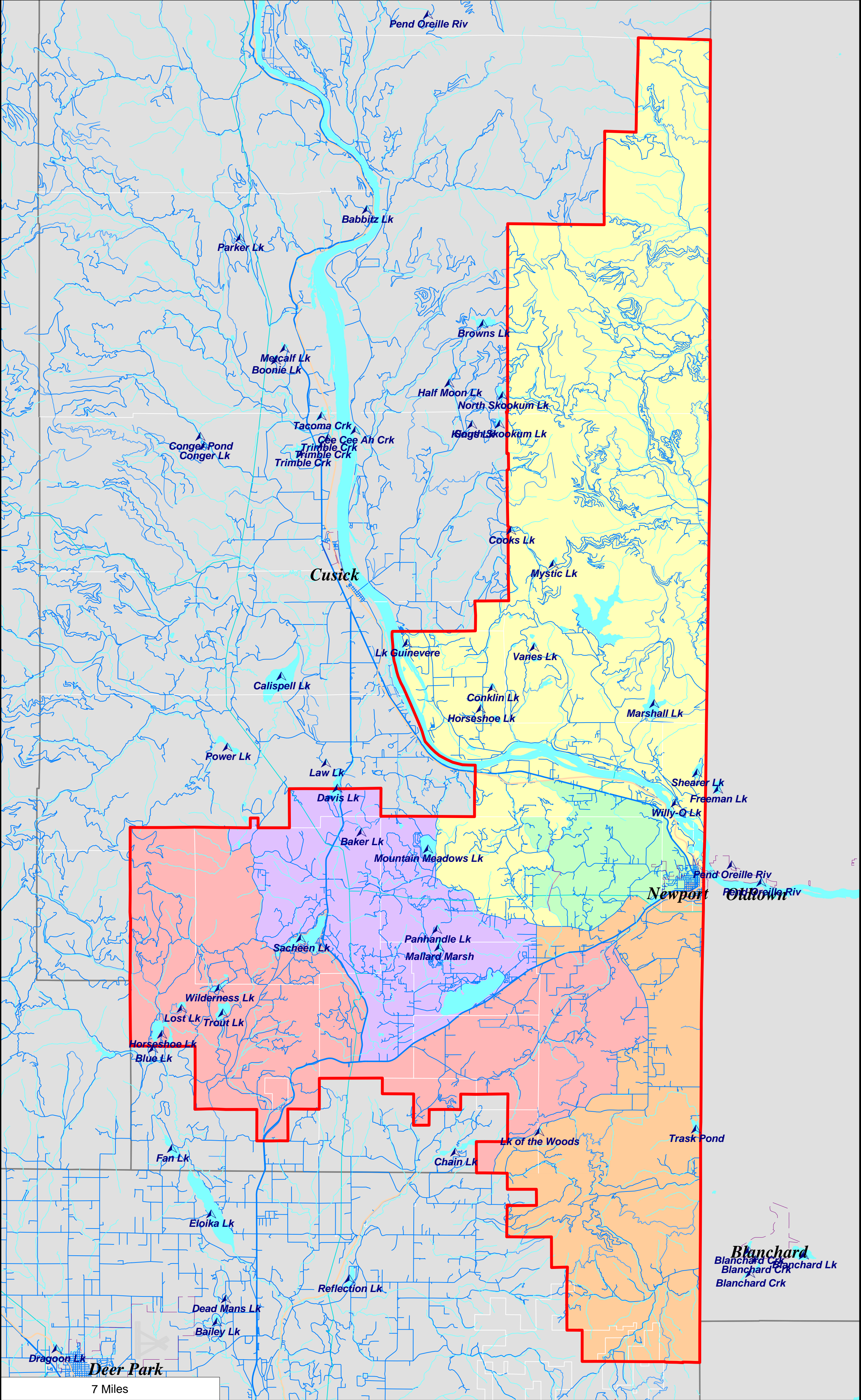
- 1st District
- 2nd District
- 3rd District
- 4th District
- 5th District

City Limits

District Outline

Water Areas

Name





08/23/2011

# ***Newport School District District Summary Report***

1

Director District Number	Ideal Population	Total Population	Deviation from Ideal	% Deviation from Ideal	White Population	Hispanic Origin (of any race)	Non White & Mixed
1st	1,617	1,499	-118	-7.30	1,437	54	62
2nd	1,617	1,714	97	6.00	1,574	47	140
3rd	1,617	1,675	58	3.59	1,551	67	124
4th	1,617	1,461	-156	-9.65	1,368	41	93
5th	1,617	1,734	117	7.24	1,601	53	133
Totals.....		<u>8,083</u>	<u>-2</u>		<u>7,531</u>	<u>262</u>	<u>552</u>

**Newport School District****Summary of Population by Race and Hispanic Origin**

District Number	Total Population	Total Population by Race							Two or More Races	Hispanic Origin (of any race)
		Single Race								
		Total	White	Black African American	American Indian and Alaska Native	Asian	Native Hawaiian and Other Pacific Islander	Other Race	Total	
1st	1,499	1,478	1,437	3	28	2	1	7	21	54
2nd	1,714	1,644	1,574	9	30	18	1	12	70	47
3rd	1,675	1,626	1,551	4	23	21	8	19	49	67
4th	1,461	1,418	1,368	14	22	6	3	5	43	41
5th	1,734	1,672	1,601	10	51	6	1	3	62	53
Totals.....	8,083	7,838	7,531	40	154	53	14	46	245	262