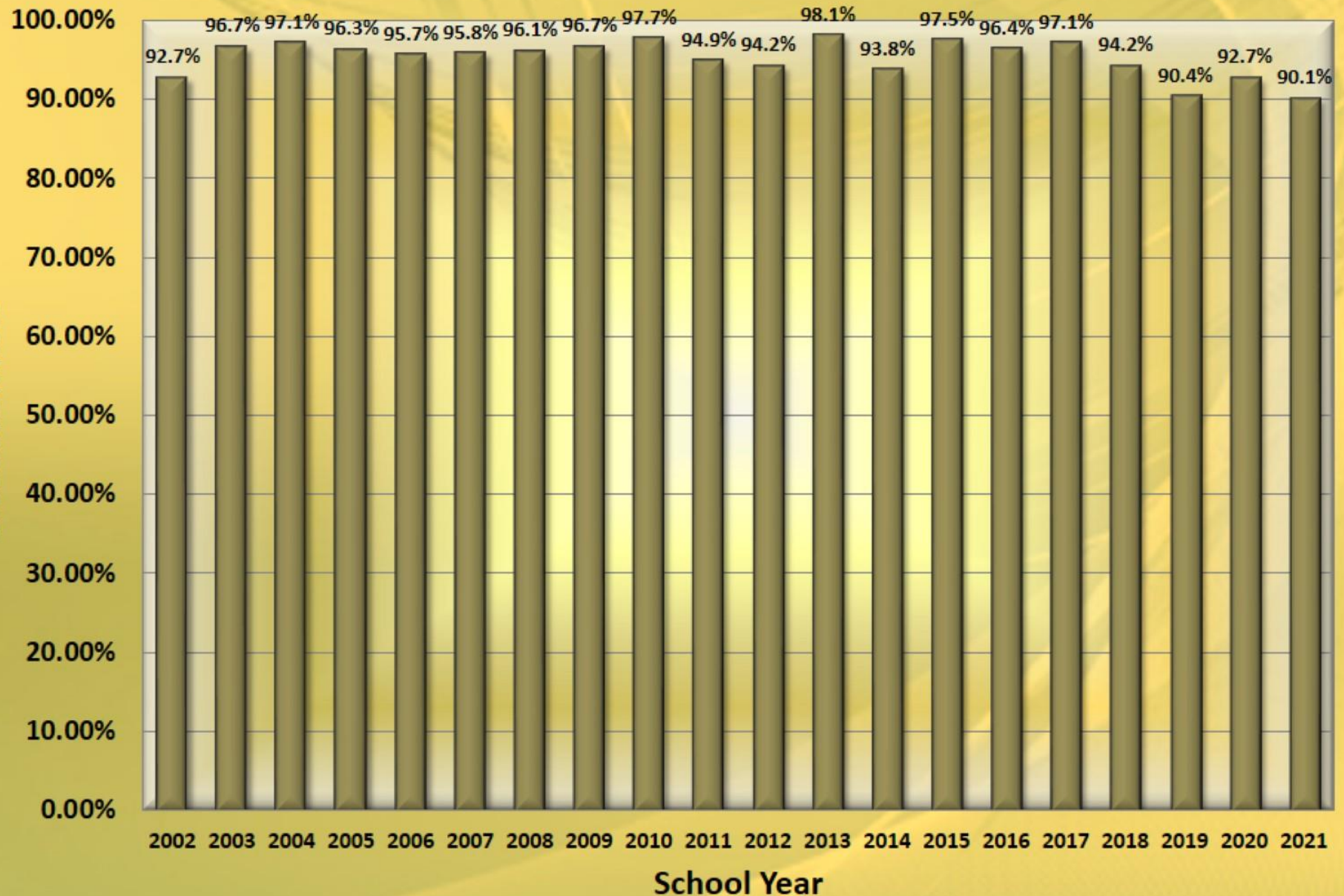
The background is a solid yellow color with several thin, dark yellow, curved lines that sweep across the upper right portion of the image, creating a sense of motion and elegance.

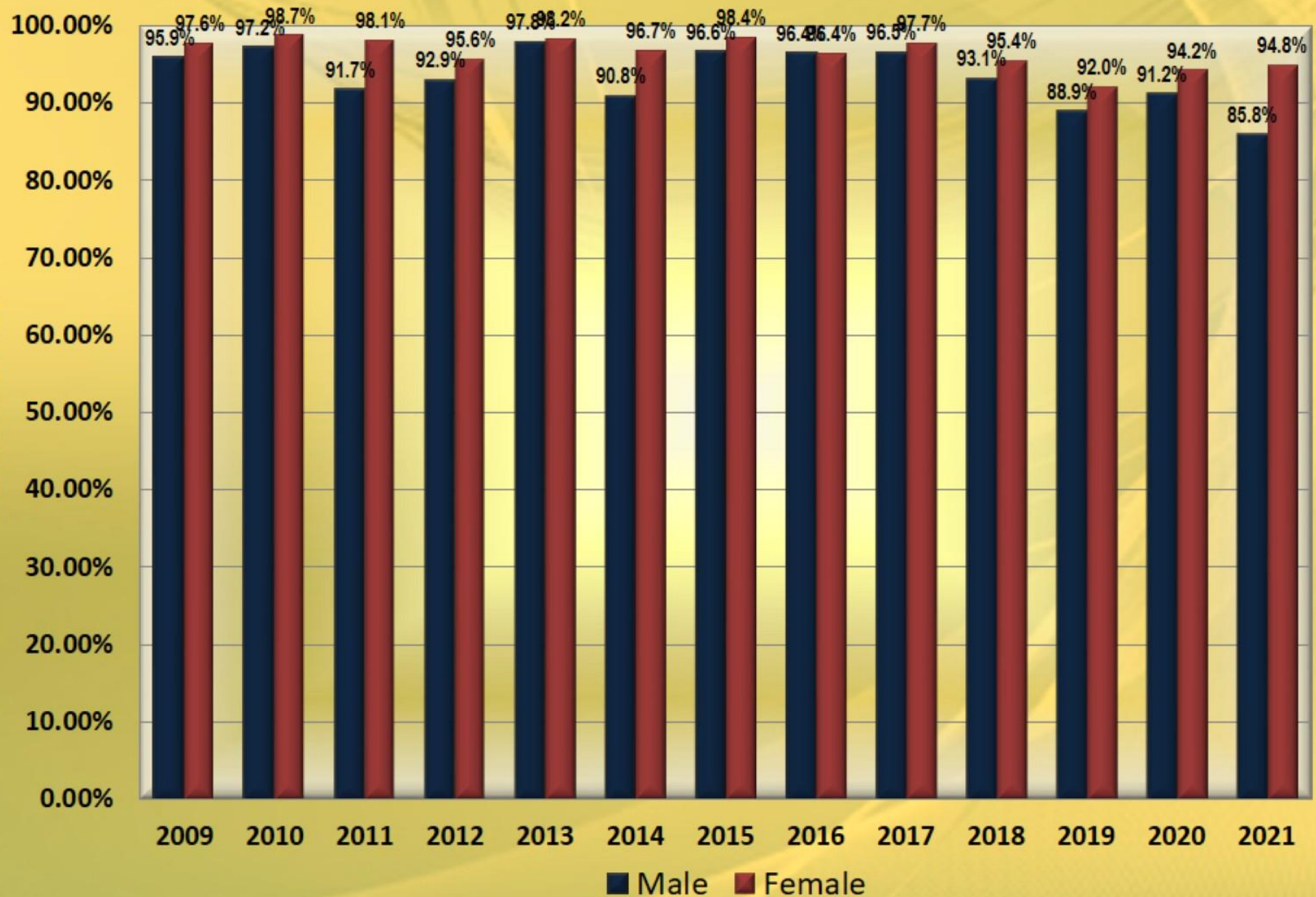
# **Graduation**

## **Class of 2021**

# Graduation Rate by School Year

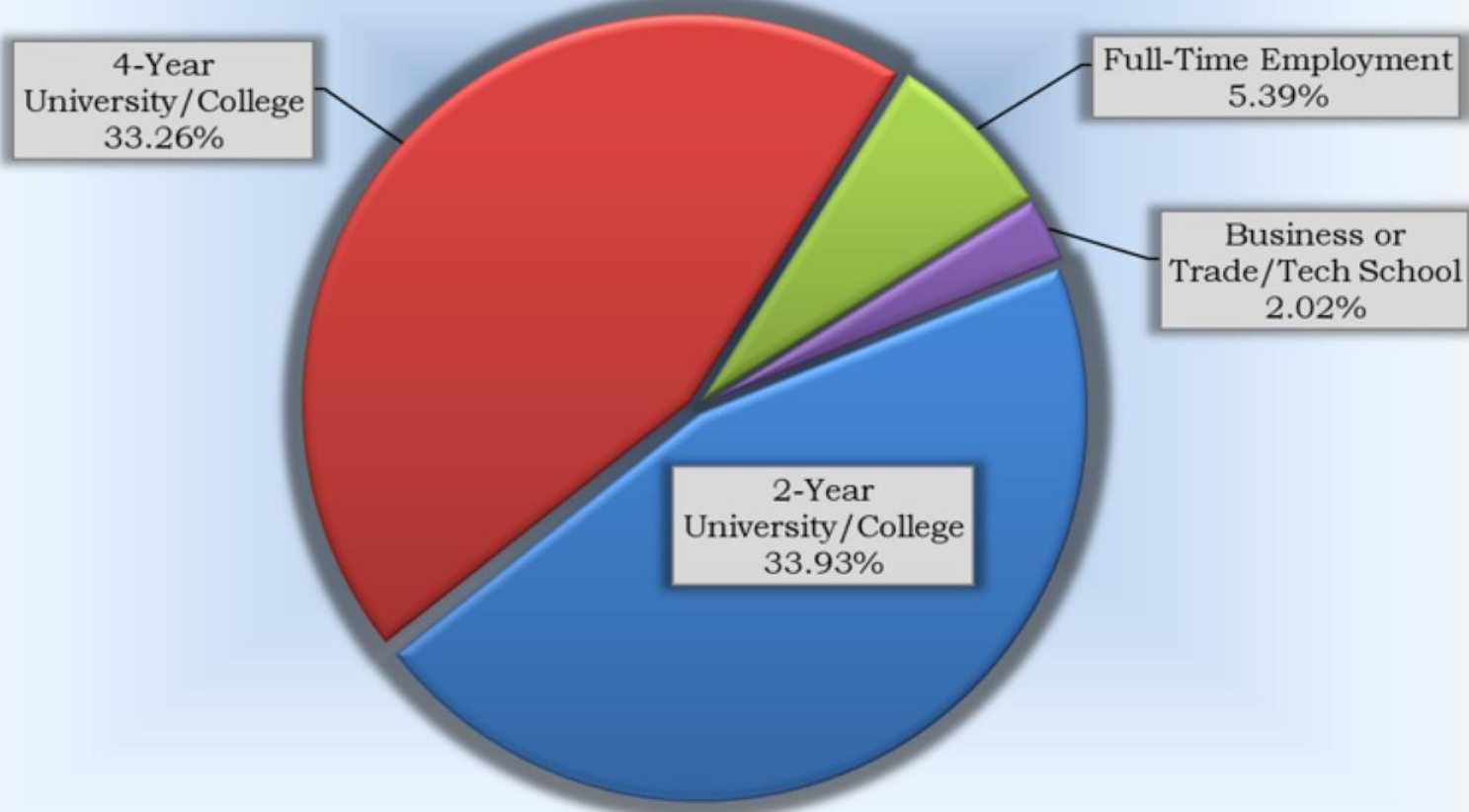


# Graduation Rate by Gender and School Year



# Exit Survey 2020-2021

## Plans Following Graduation



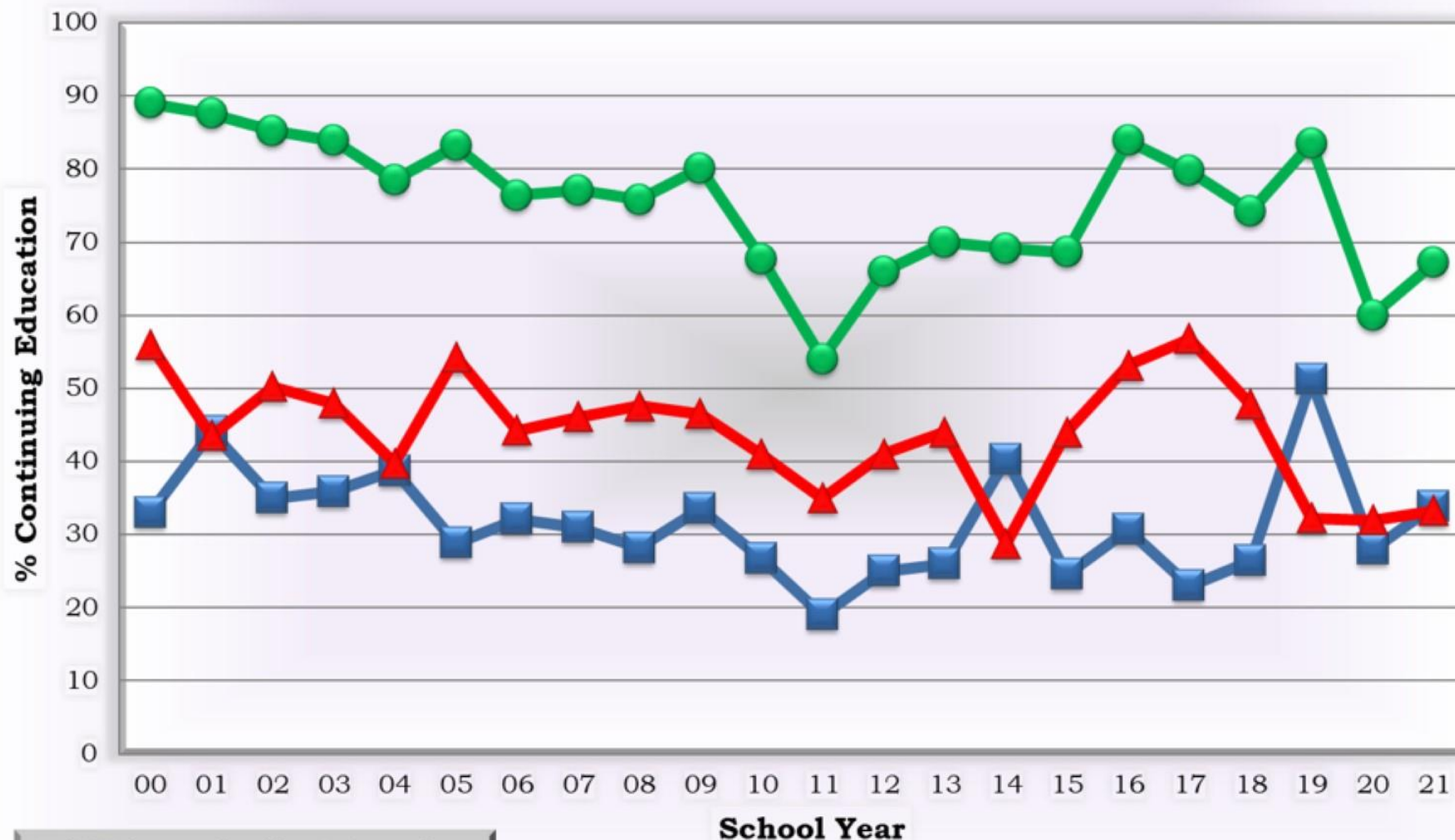


# Top 10 Colleges

College	Count	Percent
College of DuPage	143	32.13%
Aurora University	36	8.09%
University of Illinois -Chicago/Champaign	18	4.04%
Northern Illinois University	16	3.60%
Illinois State University	12	2.70%
DePaul University	4	0.90%
Dominican University	4	0.90%
National Louis University	4	0.90%
Universal Technical Institute	4	0.90%
Elmhurst University	3	0.67%

# Exit Survey 2000-2021

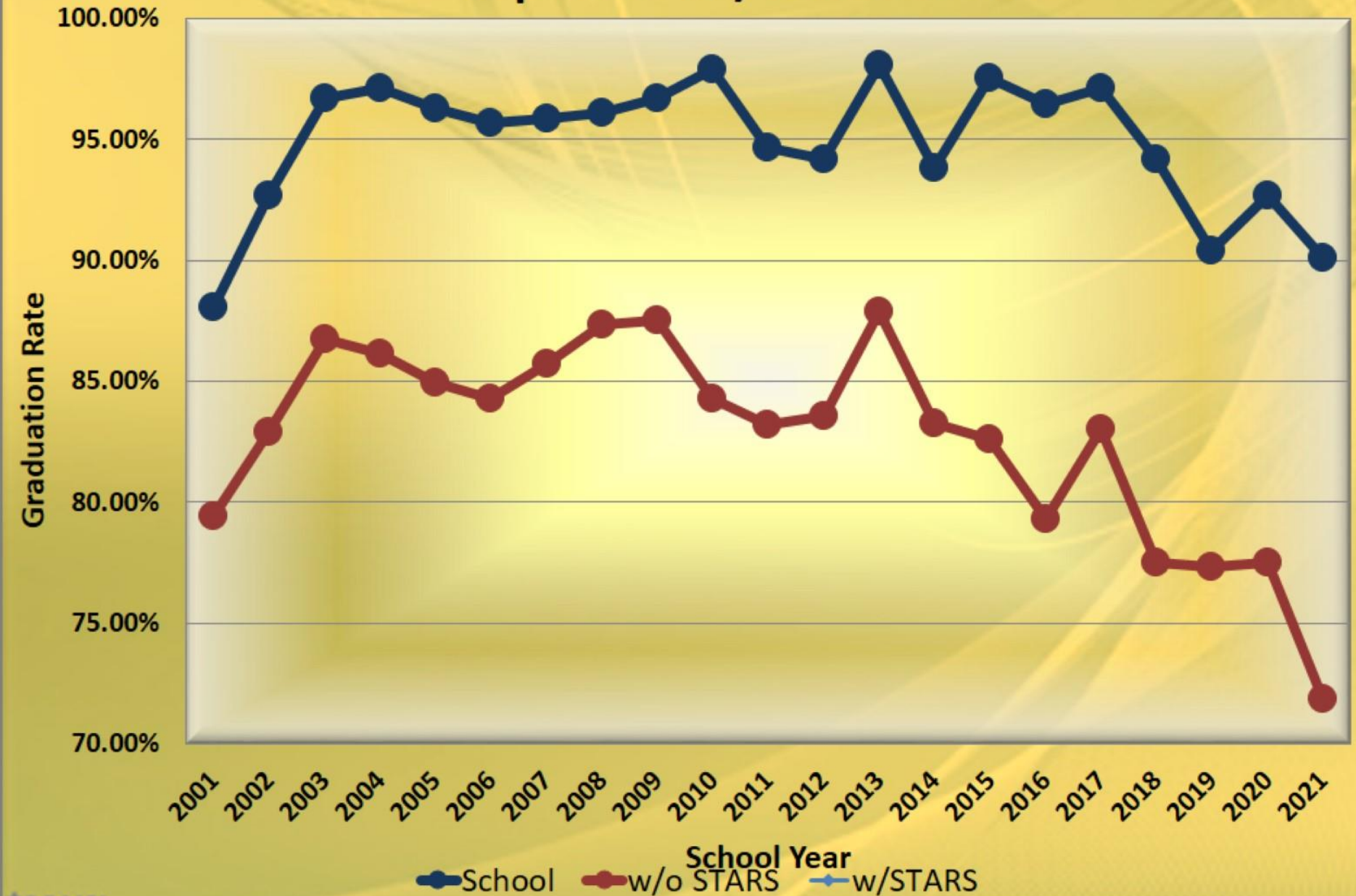
## % of Graduates Continuing Education



As of 2016, data was collected from Graduates only.  
(Prior to 2016, totals were based on entire senior class).

■ 2YR ▲ 4YR ● Total

# Graduation Rate by School Year Reported VS/With No STARS



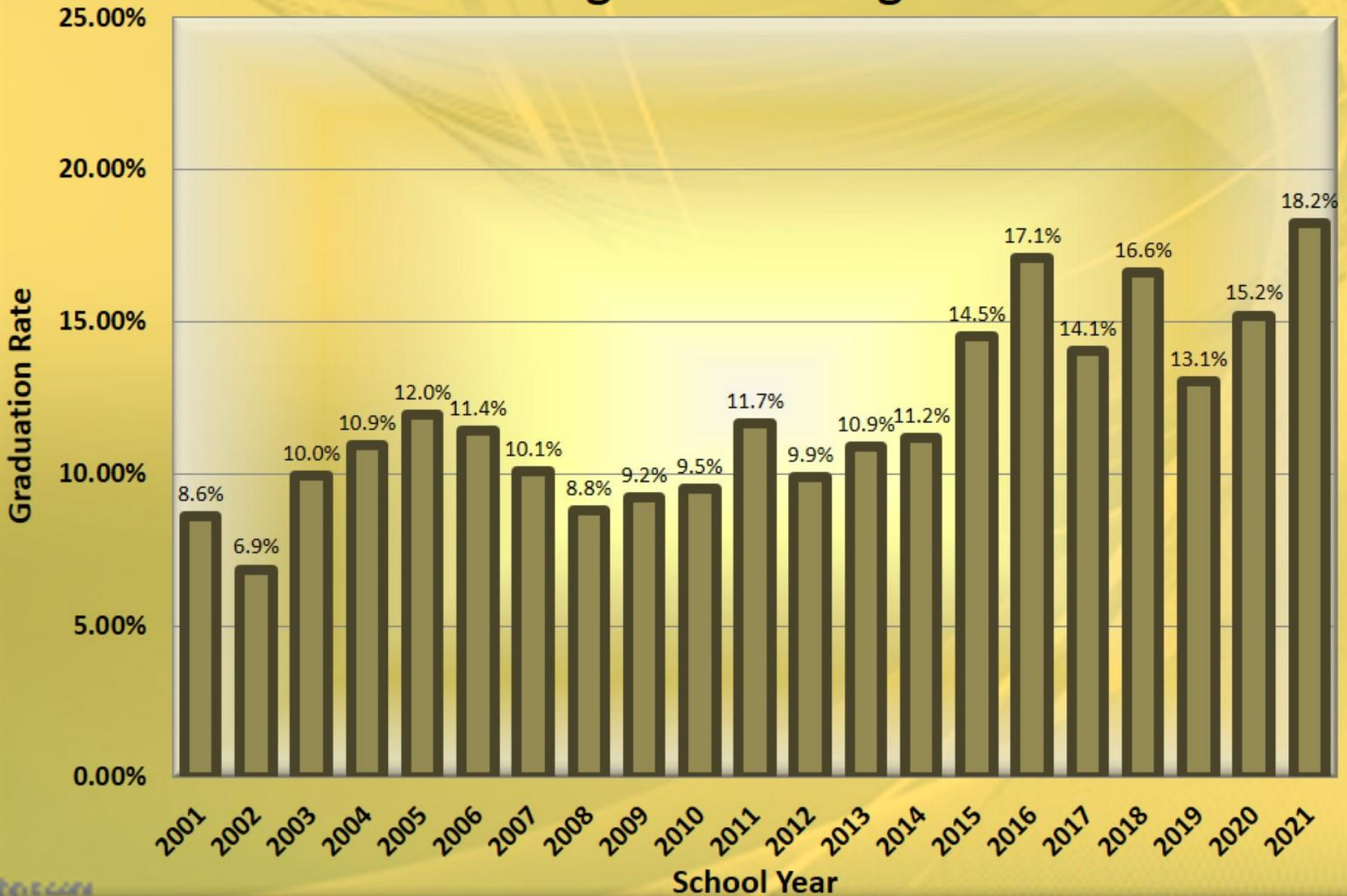


## Graduate Detail 2001 - 2021

Year	Total	w/o STARS	w/STARS	#Students	#Graduates	
2001	88.06%	79.45%	8.60%	28		
2002	92.70%	82.88%	9.82%	43	406	
2003	96.70%	86.75%	9.94%	48	467	
2004	97.10%	86.16%	10.92%	56	498	
2005	96.30%	84.93%	11.35%	58	492	
2006	95.70%	84.30%	11.40%	53	445	
2007	95.84%	85.74%	10.10%	51	484	
2008	96.12%	87.35%	8.78%	43	471	
2009	96.71%	87.50%	9.21%	42	441	
2010	97.91%	84.31%	13.60%	65	468	
2011	94.65%	83.21%	11.64%	61	497	
2012	94.17%	83.54%	10.63%	51	452	
2013	98.10%	87.89%	10.28%	56	535	
2014	93.80%	83.27%	10.48%	52	465	
2015	97.54%	82.59%	14.96%	67	437	
2016	96.44%	79.32%	17.09%	81	457	
2017	97.10%	83.04%	14.06%	63	435	
2018	94.20%	77.53%	16.60%	82	465	
2019	90.4	77.35%	13.05%	68	471	
2020	92.7	77.50%	15.21%	73	445	
2021	90.08	71.87%	18.23%	90	445	



# Percent of Graduates with Requirements Met Through STARS Program



# Number of Graduates with Requirements Met Through STARS Program

