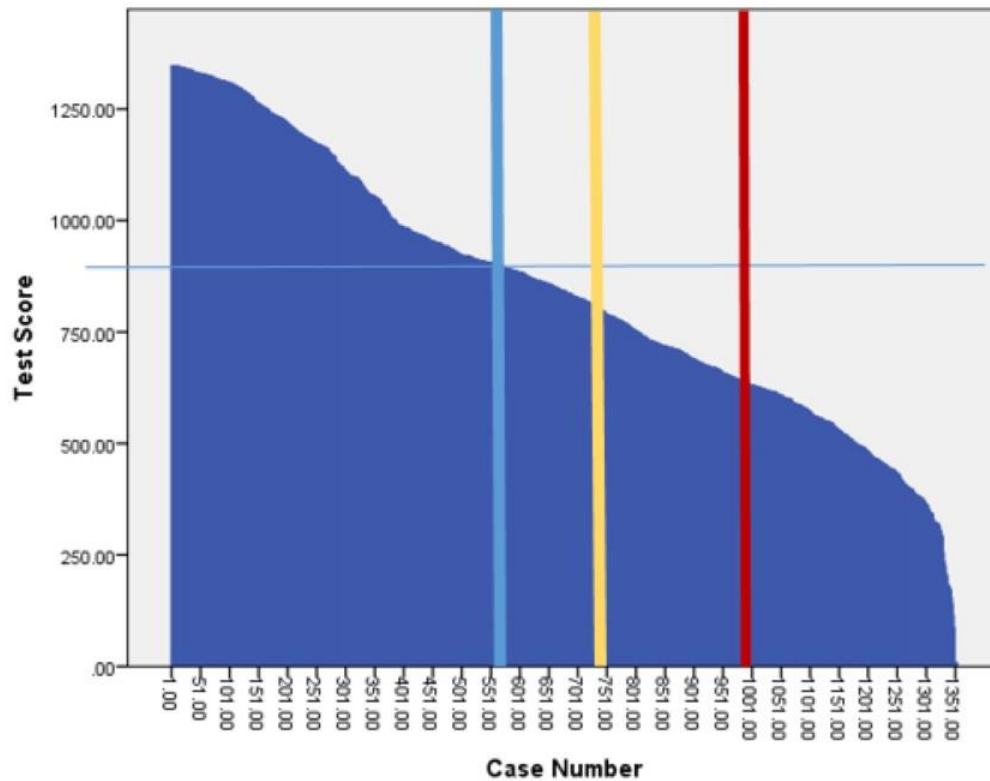
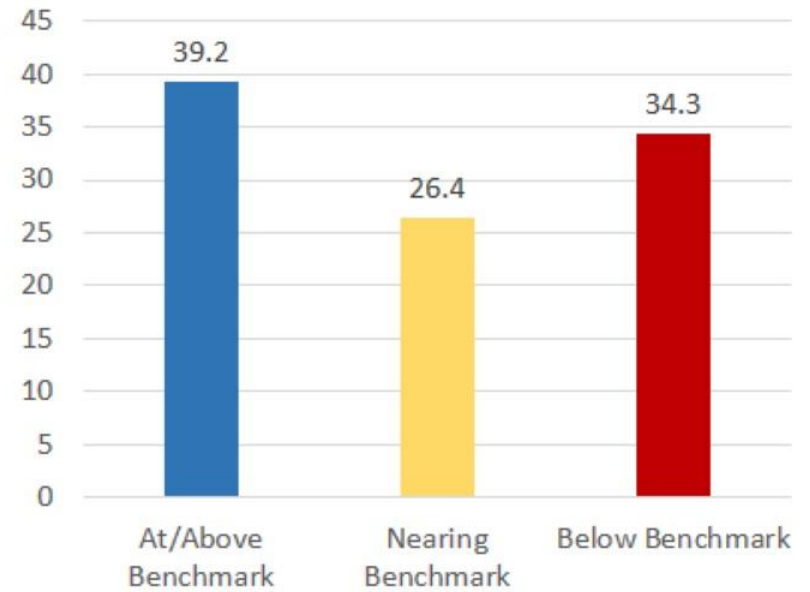


Screening Report – District Benchmark 2018/2019

STAR Reading Scale Scores for Grade 9



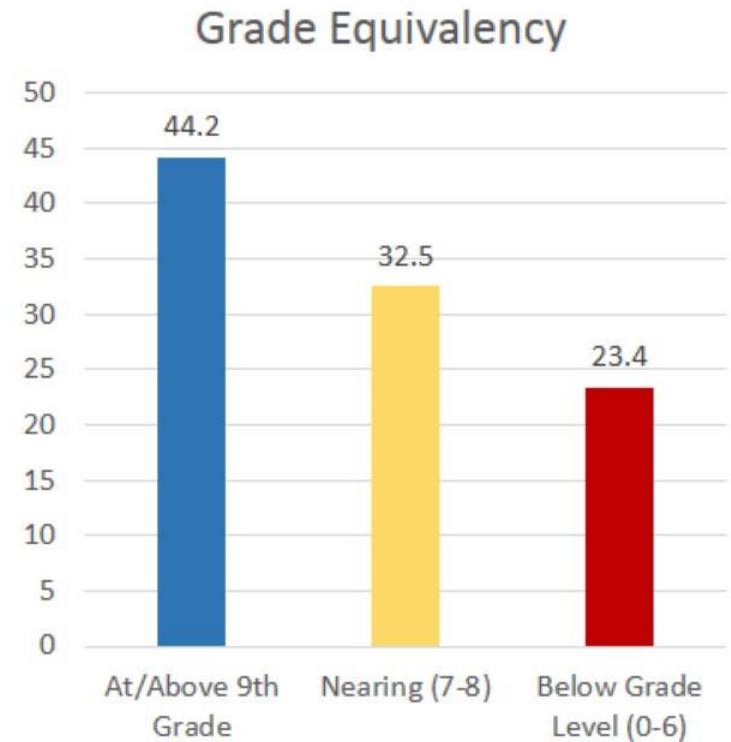
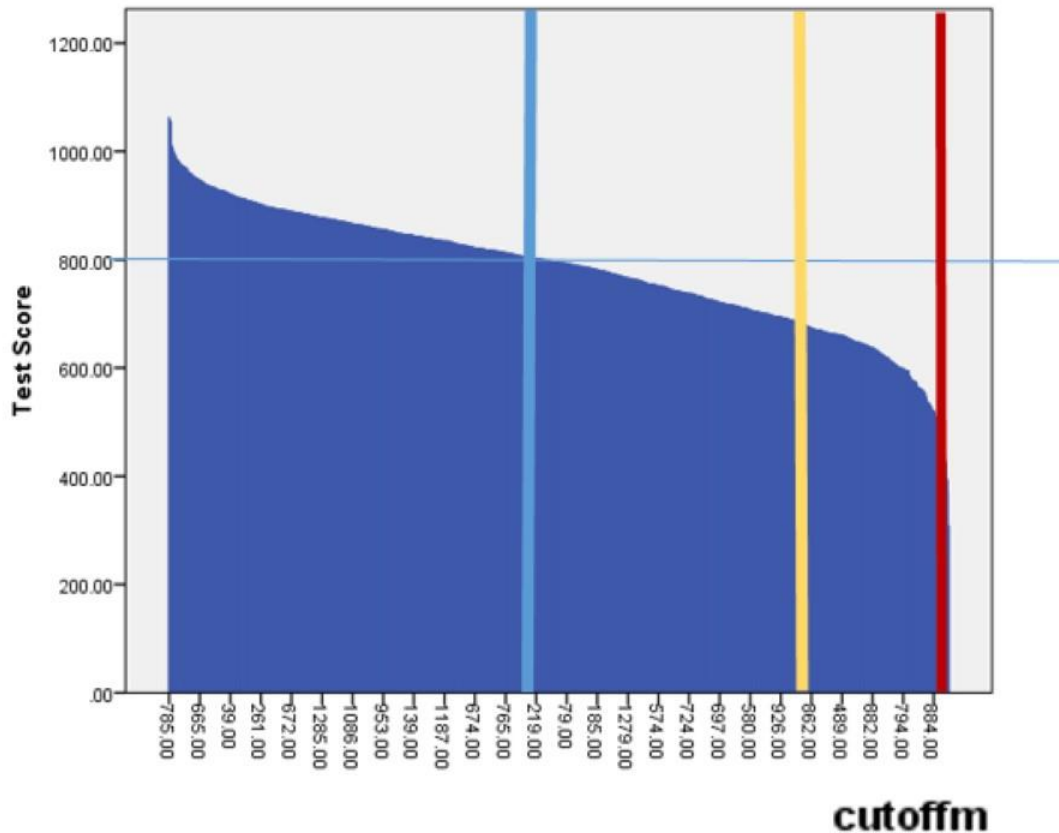
Benchmark



Cutoff

		Frequency	Percent	Valid Percent	Cumulative Percent
Valid	1-At/Above Benchmark	531	39.2	39.2	39.2
	2-Nearing Benchmark	358	26.4	26.4	65.7
	3-Below Benchmark	465	34.3	34.3	100.0
	Total	1354	100.0	100.0	

Screening Report – District Grade Equivalency 2018/2019 STAR Math Scale Scores



		Frequency	Percent	Valid Percent	Cumulative Percent
Valid	1-At/Above Benchmark	563	44.2	44.2	44.2
	2-Nearing Benchmark	414	32.5	32.5	76.6
	3-Below Benchmark	298	23.4	23.4	100.0
	Total	1275	100.0	100.0	