

PARENTS' IN-PERSON

BACK-TO-SCHOOL GUIDE 2020-21

GREENBRIAR SCHOOL

STATE REQUIREMENTS

- Face coverings for all students and staff
- 6-foot physical distancing, as much as possible
- Self-certify each morning: free of symptoms
- No more than 50 in one space
- Increased cleaning/disinfection
- No more than 50 on a bus (D28 approx. 20 max)
- Exclusion of students and staff for illness or close contact with a confirmed COVID-19 case

FACE COVERINGS



- Every student and staff member must wear a face covering when inside.
- Face coverings should fit around the nose with no gaps at the cheeks.
- Athletic/fleece gaiters are not acceptable. Only gaiters made with two-ply cotton material are acceptable.
- Masks with an exhale vent are also not acceptable.



FACE COVERINGS (CONT'D)



- Parents should send students wearing one face covering and a spare to put on after lunch. It is also advisable for students to have a couple of spares stored at school.
- When outside, face coverings may be removed, if 6-foot physical distancing is maintained. Students will be trained on how to safely remove and store masks.
- Breaks from face coverings will be planned outside, periodically (outdoor classes; recess; lunch; any time a teacher feels it is warranted)

FACE COVERINGS (CONT'D)



- The CDC offers steps to make your own:

<https://www.cdc.gov/coronavirus/2019-ncov/prevent-getting-sick/how-to-make-cloth-face-covering.html>

- CDC guidelines on how to properly clean face coverings:

<https://www.cdc.gov/coronavirus/2019-ncov/prevent-getting-sick/how-to-wash-cloth-face-coverings.html>

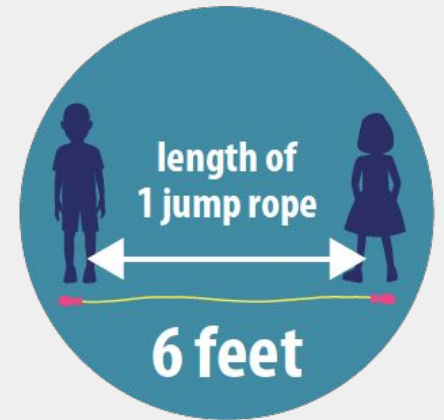
FACE COVERINGS (CONT'D)



- A student with a medical condition who is not able to wear a face covering should contact the principal and/or the school's assistant director for student services.
- Anyone may wear a **face shield, in addition to, but not in lieu of, a face covering.**

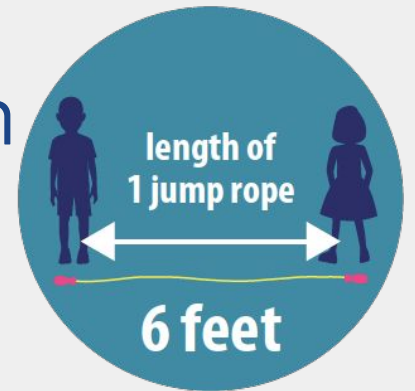
6-FOOT PHYSICAL DISTANCING

- 6-foot physical distancing is required, as much as possible.
- Student desks/work spaces will be placed 6 feet apart in traditional & non-traditional instructional spaces.
- Non-traditional instructional spaces include libraries, multi-purpose rooms, gymnasiums, etc.
- Class size caps are based on room size, ranging from 13 -15, with some larger rooms at 16+.



6-FOOT PHYSICAL DISTANCING

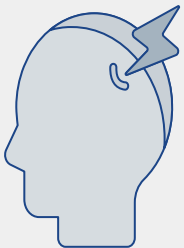
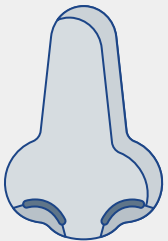
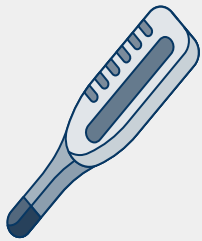
- Procedures will be established at each school to manage the number of students at arrival/dismissal times, in the hallway, bathrooms, etc. at any given time.
- Each school will have three 30' x 60' tents so some classes, recess, lunch can be held outside, even if it rains.



DAILY HEALTH CHECK

Parents must self-certify each child daily by answering the following questions:

1. Has your child experienced any of the following symptoms during the last 24 hours?



- Fatigue
- Fever (over 100.4)
- Headache
- Chills
- New loss of smell or taste
- Cough
- Congestion or runny nose
- Sore throat
- Shortness of breath or difficulty breathing
- Muscle or body aches
- Nausea or vomiting
- Diarrhea

DAILY HEALTH CHECK

Possible Answers to Question 1:

- Yes, this is a **NEW** symptom(s) for my child. **DO NOT COME TO SCHOOL.** Please contact your healthcare provider for additional guidance.

- Yes, but it is related to a diagnosed health condition my child has, **other than COVID-19.** As it is possible to have COVID-19 and other health conditions at the same time, every symptomatic person should be evaluated by their healthcare provider on a case-by-case basis. If you haven't already provided the school with medical certification that the symptom(s) are the result of another diagnosed health condition, **DO NOT COME TO SCHOOL UNTIL YOU HAVE DONE SO.**

- No

DAILY HEALTH CHECK (CONT'D)

- 2. Has your child been diagnosed with COVID-19 in the past 14 days?*** Possible answers: Yes or No
- 3. Has your child been in contact with anyone who has been diagnosed with COVID-19 in the past 14 days?** Possible answers: Yes or No
- 4. Has your child traveled outside the State of Illinois in the past 14 days and for how long?** Possible answers: Yes or No; if "yes", list number of days outside of the state.

**Per the IL State Board of Education: "Individuals who exhibit symptoms should be referred to a medical provider for evaluation, treatment, and information about when they can return to school."*

DAILY HEALTH CHECK (CONT'D)

Travel Question

- The district is following the recommendation of the Cook County Department of Public Health and expects families to also follow these guidelines. Self-quarantine is recommended for individuals who spend 24 hours or more in the states designated as hot spots. The list of states is updated weekly on Tuesdays. Updated information can be found at:
<https://cookcountypublichealth.org/communicable-diseases/covid-19/covid-19-travel-guidance>
- Staff must also self-certify daily.

ADDITIONAL SAFETY INFORMATION

- All school campuses will be closed, except for essential visitors.
- Parents are encouraged to conduct school business via email or phone.
- If coming to the school is absolutely necessary, visitors will be limited to the front office and are required to wear a mask to enter.

EXCLUSION FROM SCHOOL

Exclusion of Students and Staff

- Any individual who tests positive for COVID-19 or who shows any signs or symptoms of illness (unless related to a diagnosed health condition) will not be allowed into the school.
- Individuals with COVID-like symptoms, who do not get tested for COVID-19 and do not provide a Dr.'s note with alternative diagnosis, must complete 10 calendar days of isolation and be fever-free for 24 hours w/o using fever-reducing medication and other symptoms have improved before returning to school.
- If a household member is being evaluated for COVID-19, the rest of the household must be quarantined until an alternative diagnosis is made or a negative COVID-19 test result received.

EXCLUSION FROM SCHOOL

Exclusion of Students and Staff

- Any individual within the school environment who shows symptoms will be immediately separated from the rest of the school population and sent home with a parent/guardian.
- When a confirmed case of COVID-19 occurs, all families whose children are within the same classroom(s) will be notified. However, the name of the infected person CANNOT be shared, as that is a violation of federal law.
- Two confirmed cases of COVID-19 infections occurring within 14 calendar days of each other in individuals in the same classroom would meet the case definition for an outbreak. This would prompt an investigation by the CCHD that may result in recommendations for testing and quarantining all students/staff in the affected classroom.

EXCLUSION FROM SCHOOL

Exclusion of Students and Staff

If a confirmed or probable COVID case is identified in a classroom, or on a school bus, those who had close contact will need to quarantine for 14 calendar days. Close contact, as defined by IDPH includes:

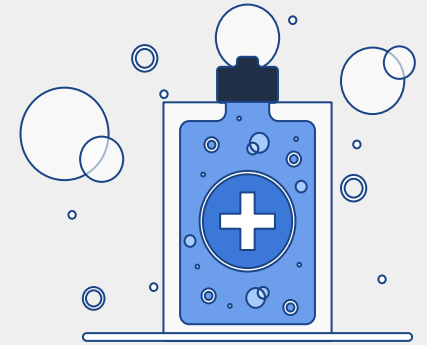
- Exposure in a classroom should be limited to everyone with whom the confirmed or probable COVID case had close contact (within 6 feet, for at least 15 minutes throughout the course of a day). If all physical distancing protocols are followed, no additional students or staff should need to be quarantined. However, each exposure is handled by Cook County Dept. of Public Health on a case-by-case basis.
- Exposure on a bus must include everyone who sat within 6 feet of the confirmed or probable COVID case for 15 minutes or longer.

SCHOOL CLOSURES

When there is a confirmed case of COVID-19 within a school:

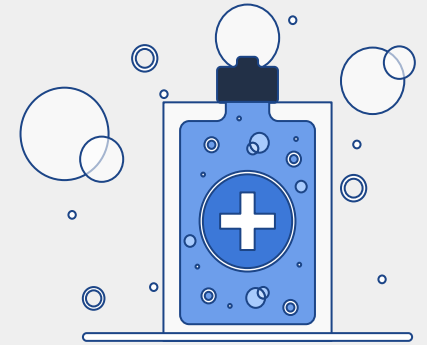
- The decision to temporarily close a school will be made by school leaders in consultation with the Cook County Department of Public Health during its investigation of a case or cluster of cases.
- If the CCDPH determines that there is a risk to the school community, the school may be closed temporarily for cleaning and disinfection.
- This initial short-term dismissal allows time for the local health officials to gain a better understanding of the COVID-19 situation impacting the school.
- This also allows the local health officials to help the school determine appropriate next steps, including whether an extended dismissal duration is needed to stop or slow the further spread of COVID-19.

HYGIENE & CLEANING/DISINFECTION



- Frequent hand-washing will be encouraged and scheduled into the day.
- Each classroom will be equipped with hand sanitizer.
- High-touch areas will be cleaned frequently throughout the day.
- District has hired additional custodians for the school day.
- Cleaning will follow CDC guidelines with EPA-approved disinfectants.
- HVAC systems are being adjusted to ensure maximum outdoor air intake (30-35% fresh air) and highest level of air filtration allowable (filters changed monthly instead of quarterly).

HYGIENE & CLEANING/DISINFECTION



- Use of shared objects will be disallowed or restricted. Any materials or equipment that must be shared will be sanitized after each use, including classroom libraries.
- Each school is equipped with multiple water bottle filling stations - drinking fountains will not be used.

BUS TRANSPORTATION



- Parents are encouraged to drive their children to school, if feasible. Students can also ride bikes/walk.
- Schools are exploring staggered start/end times (10-15 mins.) to ease traffic congestion and prevent students from congregating.
- Bus ridership will be limited to one person to a seat, allowing about 20 students on a large bus and 10 on a smaller bus.
- Parents must self-certify their children before boarding the bus.
- Face coverings must be worn on the bus at all times.

ELEMENTARY SCHOOL DAY

- Students will have core subjects each day.
- Elementary art, music, Spanish will occur through remote instruction in the classroom.
- Physical Education will be held primarily outside or, during inclement weather, in the gym, regular classroom, or multi-purpose room.
- Lunch will be outside on most days. In the event of rain, we will utilize our tents and multipurpose spaces. All lunches must be packed at home and brought to school by students (no deliveries from food vendors). Students can go home for lunch after parents submit specific dates on a school form. This form will be available on the school website and at the school office.
- Students will have a morning and afternoon recess.

