

# HANOVER CENTRAL HIGH SCHOOL

## Hanover Community School Corporation

### PROGRAM & DESIGN PRESENTATION



PREPARED BY:  
**GIBRALTAR DESIGN**

SUBMITTED TO:  
Mrs. Mary Tracy-MacAulay  
*Superintendent of HCSC*  
February 23, 2021

## Table of Contents

<b>SECTION I. Introduction &amp; Summary of Report Contents .....</b>	<b>Page 3</b>
<b>SECTION II. Observations of 21<sup>st</sup> Century Learning.....</b>	<b>Page 4</b>
<b>SECTION III. Design Executive Summary.....</b>	<b>Page 5</b>
A. Overall Site Plan	
B. Site Master Plan	
C. Overall Building Plan	
<b>SECTION IV. Learning Environment Concepts &amp; Opportunities.....</b>	<b>Page 10</b>
A. CTE & STEM Improvements	
B. Science Improvements	
C. Performing Arts Improvements	
D. New Centralized Office & Student Commons	
E. New Early Childhood Center	
<b>SECTION V. Design Visualization.....</b>	<b>Page 17</b>
A. Exterior Design Concepts	

## SECTION I. Introduction & Summary of Report Contents

Gibraltar Design is pleased to present this report to the Hanover Community School Corporation. This document provides the final design intent and relevant information compiled through the efforts of the HCSC Administrative & Facility Teams, building Principals, Gibraltar Design and The Skillman Corporation.

This High School Report and information is specifically a result of the following:

- Building and Site Assessments
- Educational focus on Learning Environments for students and teachers
- Collaboration and direction from the HCSC Administrative Team
- Input and confirmation of design with building Principals
- Numerous meetings between Gibraltar Design, The Skillman Corporation, and HCSC Leadership in order to consider site and constructability, construction schedule, and ongoing quality control

We are confident this report represents the culmination of consensus optimizing flexible and engaging new school learning environments for the school district and, specifically, Hanover Central High School.

Gibraltar Design's goal is the same as that of the Administrative Leadership:

**The goal of the "new" Hanover Central High School is to provide the Hanover students with the best educational environment for enhanced learning, opportunity, and achievement.**

Respectfully submitted,

**GIBRALTAR DESIGN**

## SECTION II. Observations of 21<sup>st</sup> Century Learning

### LEARNING LEADER

A High School supports Learning Leaders who:

- Are able to demonstrate that they are lifelong learners
- Understand the importance of an agile classroom
- Utilize an agile classroom to adjust to varied learning needs and instructional best practices
- Utilize an agile classroom to adjust to different instructional delivery strategies learned through professional development
- Develops critical thinkers and encourages digital literacy
- Create a learning environment that connects and inspires all learners

### HIGH SCHOOL LEARNER

A High School supports Learners who:

- Are less reliant on textbooks, paper, pencils, and can demonstrate understanding on a variety of platforms
- Engage via one-to-one learning with personal learning devices, digital tools, online communities, and digital content
- Are motivated by exploration, inquiry, making connections, and real-world application
- Are able to learn socially, create, and collaborate with peers on joint projects
- Need differentiated instructional strategies to connect with content and skill
- Need to continue preparing for College and Career readiness, which culminates at the high school level



## SECTION III. Design Executive Summary

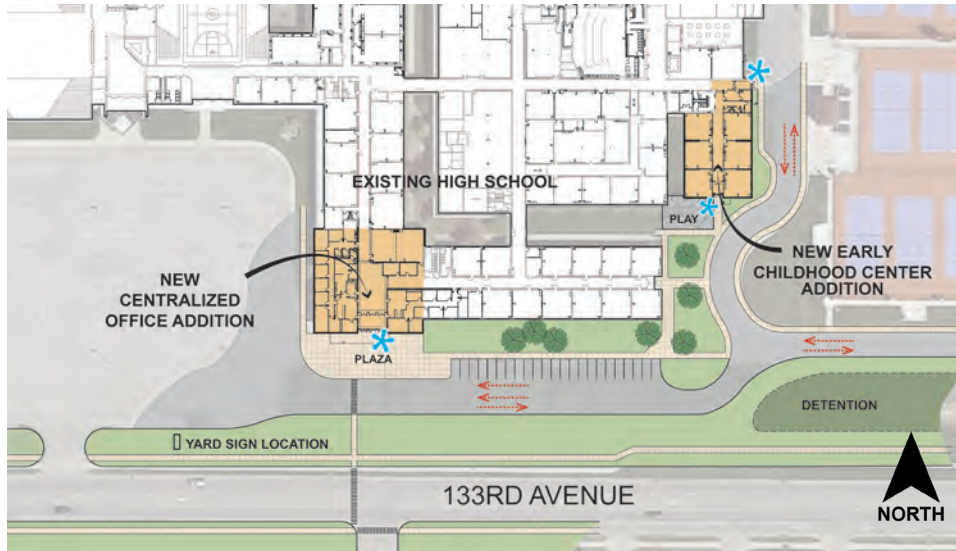
## SECTION III. Design Executive Summary

### OVERALL SITE PLAN



## SECTION III. Design Executive Summary

### SITE MASTER PLAN



### Considerations

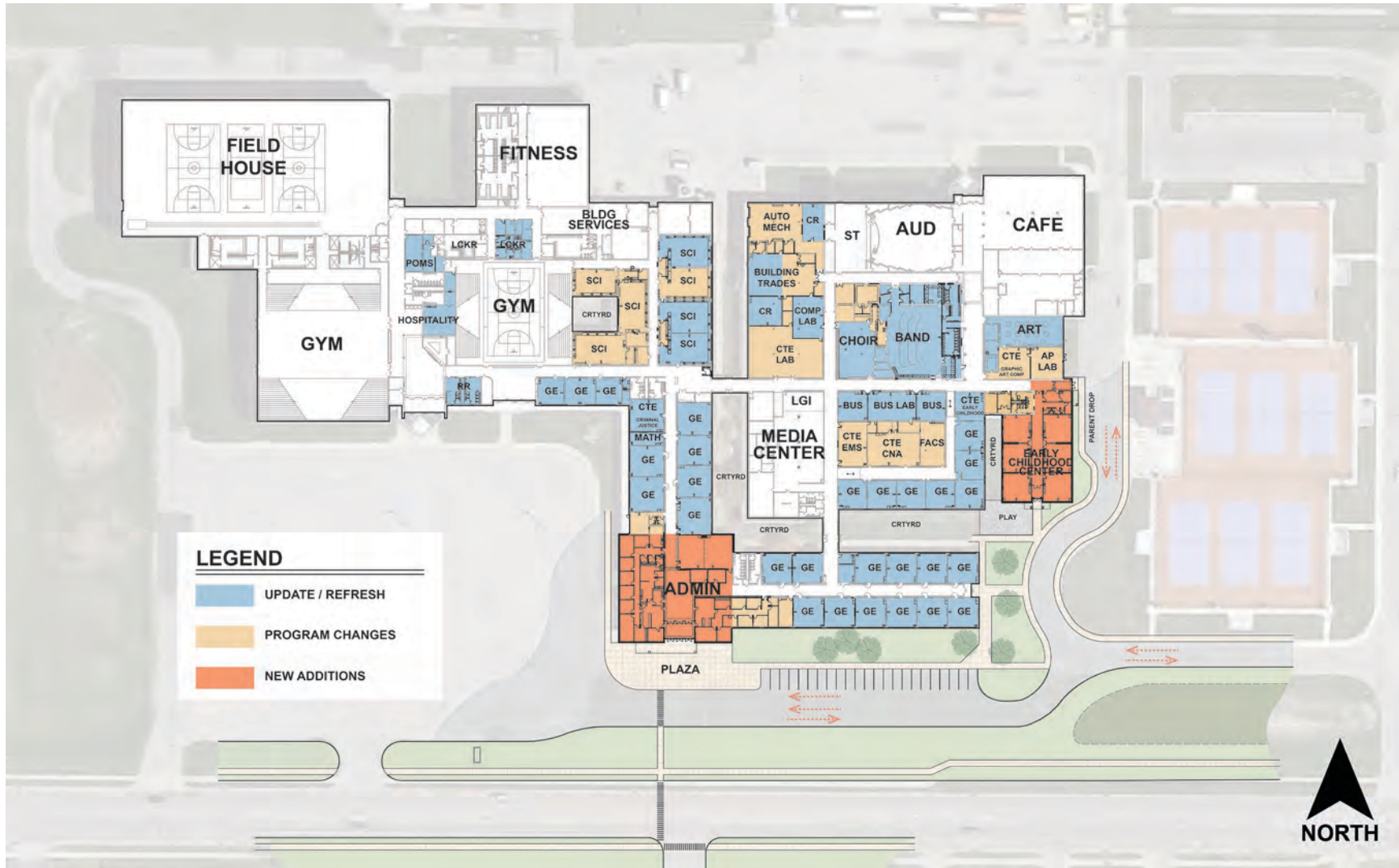
- New Main Entrance oriented to 133<sup>rd</sup> Avenue
- New south drive "pulled" away from Main Entrance
- Visitor parking located between Main Entrance and driveway
- New Plaza for student drop and pickup
- New Early Childhood Center Addition
- Storm water management improvements

SITE & BUILDING DATA			
	<i>Existing</i>	<i>New</i>	<i>TOTAL</i>
SF	± 249,870 **	± 18,070	± <b>267,940</b>
Visitor Parking	± 243 (South Lot)	± 23	± <b>266</b>
Acreage	± 47.5	--	± <b>47.5</b>

\*\* Excludes SF that has been removed in demolition.

## SECTION III. Design Executive Summary

### OVERALL BUILDING PLAN



## SECTION III. Design Executive Summary

### OVERALL BUILDING PLAN



PROGRAM CRITERIA SUMMARY		
Room Type	# of Rms	New Program
General Ed	28	28
Science	6	7
Business	4	3
Band	1	1
Choir	1	1
CTE	5	7
PLTW	1	1
Art	1	1
FACS	2	1
P.E. / Athletics	3	3
Alternative Ed	1	1
<b>TOTAL</b>	<b>53</b>	<b>54</b>

### Considerations

- Update and Modernize Classrooms
- Science, CTE / STEM, and Performing Arts Enhancements
- New Large Group Instruction space
- New Centralized Office & Student Commons Addition with Secure Entry
- New Early Childhood Center Addition
- Exterior Building Updates and Improvements
- Refresh corridors throughout
- Improve Building Comfort (HVAC / Electrical)



## SECTION IV. Learning Environment Concepts & Opportunities

## SECTION IV. Learning Environment Concepts & Opportunities

### CTE & STEM IMPROVEMENTS

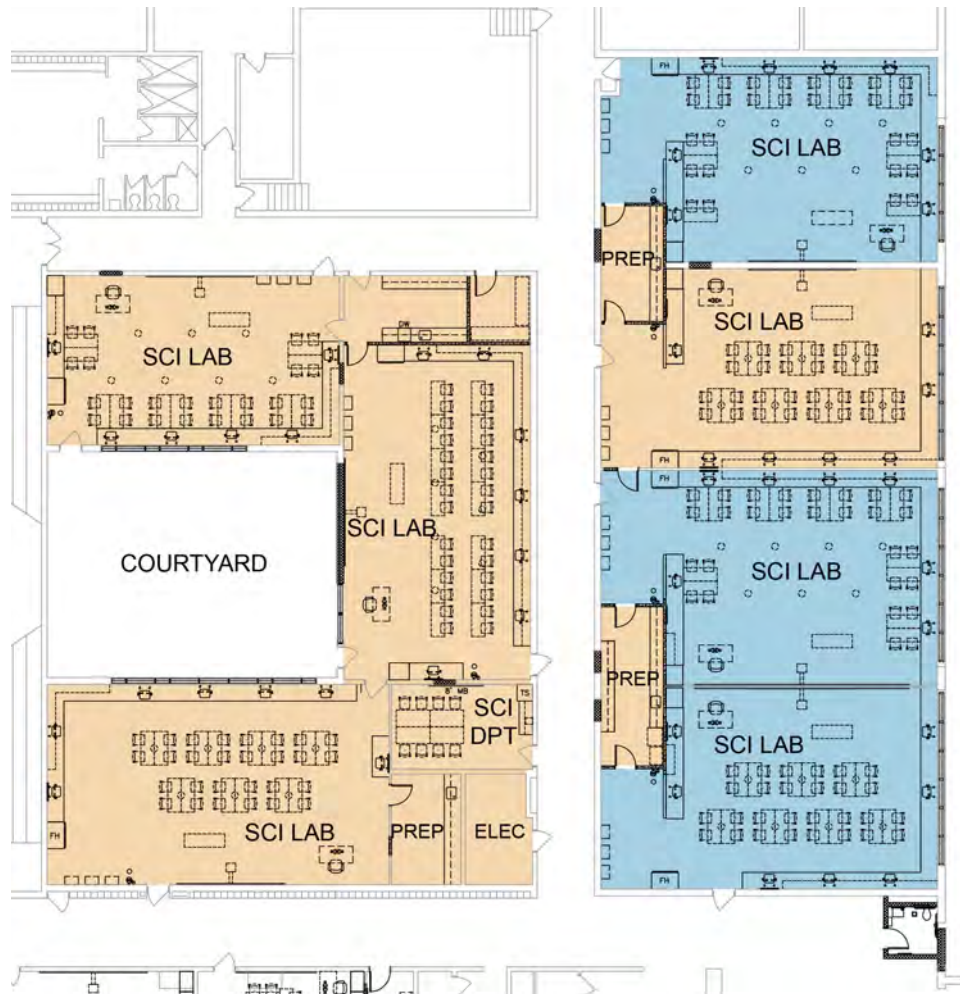


#### Considerations

- Programs taught in these updated spaces include:
  - Auto Mechanics
  - Building Trades
  - STEM / PLTW
  - CNA
  - EMS
  - Criminal Justice
  - Graphic Arts
- Flex Lab for Future CTE Opportunity

## SECTION IV. Learning Environment Concepts & Opportunities

### SCIENCE IMPROVEMENTS



### Considerations

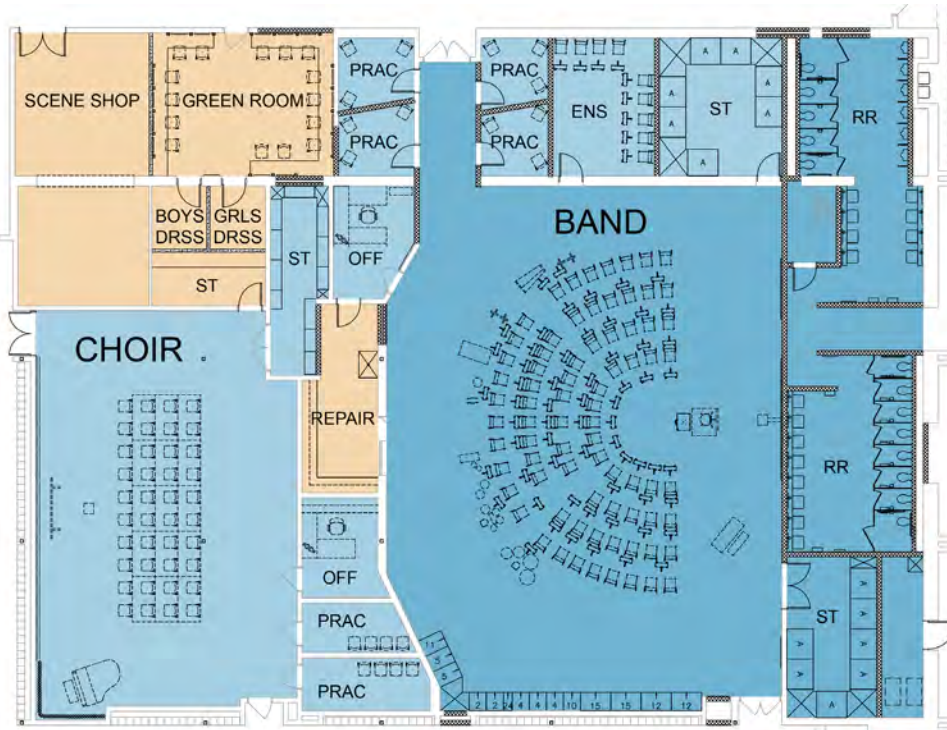
- Centralized Department
- Staff Collaborations
- Right-sized Labs
- Flexible Rooms
- CTE / Bio-Med Opportunities



SCIENCE CLASSROOM EXAMPLE

## SECTION IV. Learning Environment Concepts & Opportunities

### PERFORMING ARTS IMPROVEMENTS

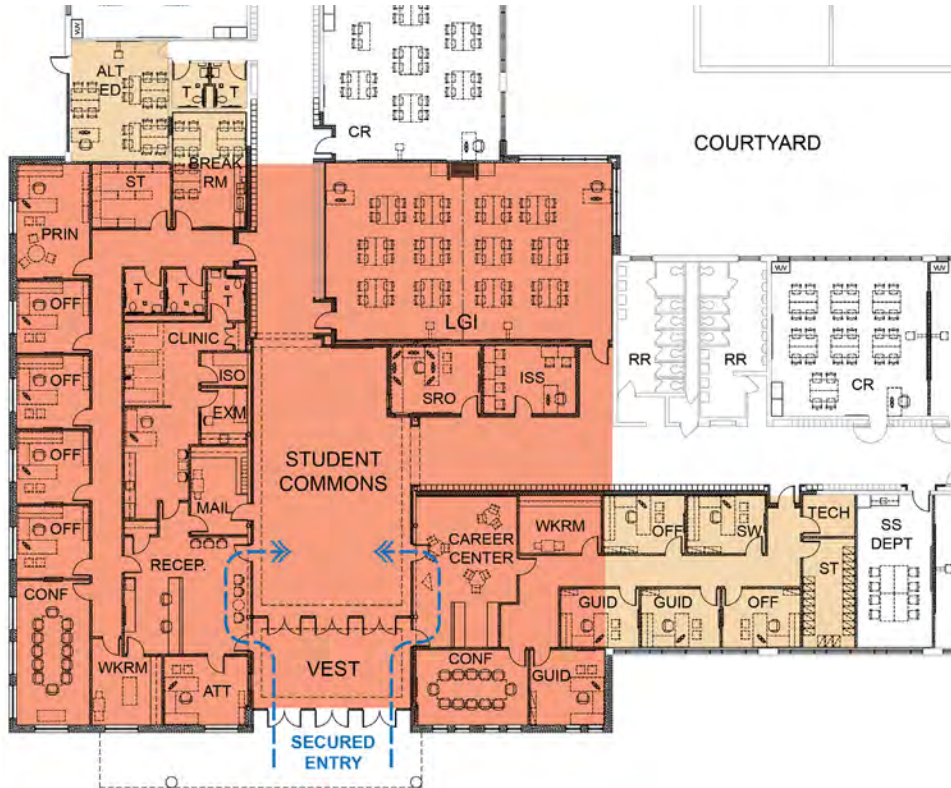


#### Considerations

- Band Room Expansion & Improvements
- Stage Floor Improvement
- New Auditorium Sound System
- Theatrical Lighting Upgrade
- New Stage Curtain

## SECTION IV. Learning Environment Concepts & Opportunities

### NEW CENTRALIZED OFFICE & STUDENT COMMONS



#### Considerations

- New Offices
- Attendance adjacent to entry
- Clinic
- Guidance and Career Center
- School Resource Office centrally located
- Student Commons with Clerestory
- Large Group Instruction / Flex Classrooms

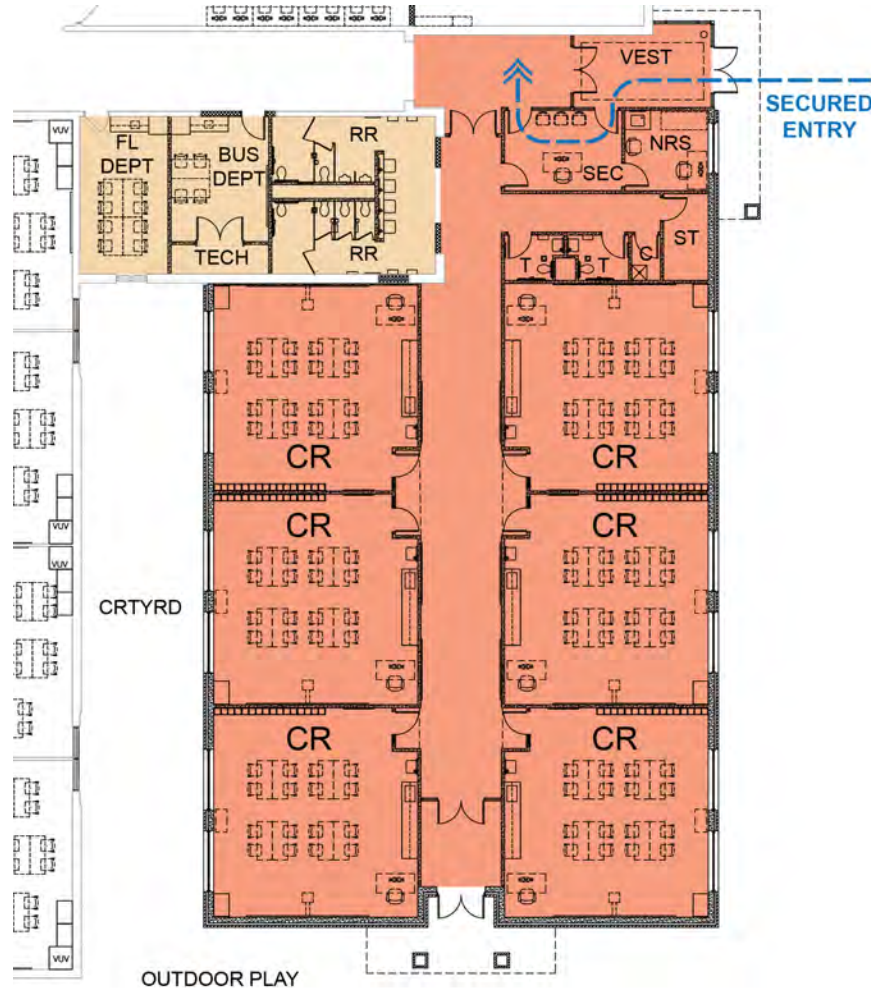
## SECTION IV. Learning Environment Concepts & Opportunities

### NEW CENTRALIZED OFFICE & STUDENT COMMONS



## SECTION IV. Learning Environment Concepts & Opportunities

### NEW EARLY CHILDHOOD CENTER



#### Considerations

- 6 Classrooms
- Secure "wing"
- Early Childhood CTE programming adjacent to Early Childhood "wing"
- Parent Drop / Pick-up Lane
- Secure outdoor Pre-school Play



## SECTION V. Design Visualization

## SECTION V. Design Visualization

### SOUTHEAST VIEW OF NEW FRONT ENTRANCE



## SECTION V. Design Visualization

### SOUTHWEST VIEW OF NEW FRONT ENTRANCE



## SECTION V. Design Visualization

### NORTHEAST VIEW OF NEW EARLY CHILDHOOD CENTER



## SECTION V. Design Visualization

### SOUTHEAST VIEW OF NEW EARLY CHILDHOOD CENTER

