

# 5

## Indicators of Postsecondary Readiness through **CAREER READINESS**

2023-2024

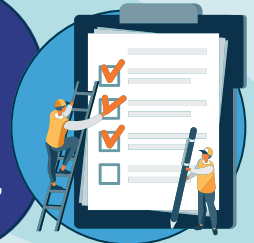


### Industry Certifications

A Valid Industry Certification list is maintained by the Kentucky Workforce Innovation Board (KWIB) in collaboration with local Workforce Investment Boards (WIBs) and the Office of Career and Technical Education.

### CTE End of Program (EOP) Assessments

The CTE EOP Assessments are state-developed assessments designed to indicate that a student has retained knowledge related to their chosen career pathway. The EOPs are based upon clear and concise standards identified by Kentucky employers, aligned with statewide articulation agreements with postsecondary partners.

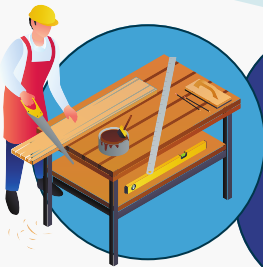


### Approved CTE Dual Credit

Eligible dual credit courses aligned to CTE career pathways for “career readiness” are approved annually by the KDE. To meet this indicator, students must complete one (1) of the approved CTE dual credit courses with a “C” or higher letter grade.

### Cooperative Education and Internships

Students can meet this indicator by completing a minimum of 300 hours of on-the-job work experience in a cooperative (co-op) or internship that is approved by the Kentucky Board of Education (KBE). Co-ops and internships should adhere to Kentucky's Work-Based Learning Manual and to 705 KAR 4:041.



### Registered Apprenticeship TRACK

The KDE's Tech Ready Apprentices for Careers in Kentucky (TRACK) youth/pre-apprenticeship program regulated by the United States Department of Labor and the Kentucky Education and Labor Cabinet. TRACK is nationally recognized as a best practice youth apprenticeship model.