

Santa Barbara County Education Office COVID-19 Safety Plan

January 1, 2023



This Page Left Blank

Santa Barbara County Education Office COVID-19 Safety Plan

January 1, 2023



Santa Barbara County Education Office

4400 Cathedral Oaks Rd, PO Box 6307, Santa Barbara, CA 93160-6307
Telephone: (805) 964-4711 • FAX: (805) 964-4712 • sbceo.org

Susan C. Salcido, Superintendent of Schools

Letter from the Superintendent

Dear Students, Staff and Community Members,

The last few years have taught us flexibility and resilience in response to the COVID-19 pandemic. Together we have navigated the fear of the unknown, waited for science to develop vaccines, and taken protective measures in the best interest of those who are most vulnerable to illness. Each phase of the pandemic brought us new information, knowledge and understandings that have shaped our current reality and brought us together as a community through this shared experience.

The Santa Barbara County Education Office (SBCEO) acknowledges that COVID-19 remains a threat to the community. The health and safety of our students, staff and the community at large remains our priority. We will continue to work closely with Santa Barbara County Public Health Department (SBCPHD), the California Department of Public Health (CDPH), and the Centers of Disease Control and Prevention (CDC) to monitor and apply best practices to mitigate transmission of COVID-19 while providing optimal access to education, services and programs.

SBCEO is committed to in-person access to our schools, worksites, and programs. We know that full time, in-person educational experiences are essential for supporting the developmental growth of our children. We know that adults benefit from in-person connective opportunities to maintain positive mental health as well. We will continue to take action to ensure our facilities, campuses and programs are open for full-time, in-person access while ensuring the health and safety of students and staff.

On behalf of the Santa Barbara County Education Office, I thank you for your tireless efforts over the past few years. While your challenges have varied, your shared

resilience and commitment to education is evident. I look forward to joining you in our next phase of growth.

Thank you,

A handwritten signature in cursive script that reads "Susan Salcido".

Dr. Susan Salcido
Superintendent
Santa Barbara County Education Office

This Page Left Blank

Table of Contents

Letter from the Superintendent	3
1. Introduction and Intent	6
2. COVID-19 Mitigation Strategies	7
Vaccination	8
Masks	8
Optimizing Indoor Air Quality	9
Hand and Respiratory Hygiene	9
Cleaning of Facilities	10
Illness Protocols	10
Symptoms of Illness	10
COVID-19 Positive	11
COVID-19 Testing Plan	12
Access to Tests	12
Response Testing	12
Outbreak Reporting and Exposure Notification	13
3. Resources	14

1. Introduction and Intent

The California Department of Public Health(CDPH) supports safe, in-person learning as being critical to student well-being and development. The CDPH provides guidance for sustainable disease management strategies to mitigate the spread of COVID-19 to prevent disruption to schools and childcare. The strategies provided by CDPH should be used in tandem with federal, state, and local legal requirements, including but not limited to Public Health Officer orders, Cal/OSHA regulations, California Code of Regulations(CCR), California Department of Education(CDE) directives, as well as emergency operations procedures. SBCEO Juvenile Court and Community Schools (JCCS) follow the protocols for Santa Barbara County Probation Department.

This COVID-19 Safety Plan is representative of the SBCEO safety efforts and actions. This Plan is inclusive of the SBCEO COVID-19 Testing Plan and has been informed by the following in consultation with local Public Health:

- [CDPH K-12 Schools Guidance to Support Safe In-Person Learning, 2022-2023 School Year](#)
- [American Academy of Pediatrics- “Caring for Children and Youth with Special Health Care Needs During the COVID-19 Pandemic”](#)
- [California Department of Education\(CDE\)-Social and Emotional Learning](#)
- [California Health and Human Services \(CalHHS\)- “Mental Health Resources for Youth”](#)
- [CDPH SMARTER Plan](#)
- [CDPH COVID-19 and Improving Indoor Air Quality in Schools](#)
- [CDPH Testing Framework for K-12 Schools for the 2022-2023 School Year](#)
- [CDPH Guidance for Child Care Providers and Programs](#)
- [Cal/OSHA Emergency Temporary Standards](#)
- [Centers for Disease Control and Prevention\(CDC\) Operational Guidance for K-12 Schools and Early Care and Education Programs to Support Safe In-Person Learning](#)

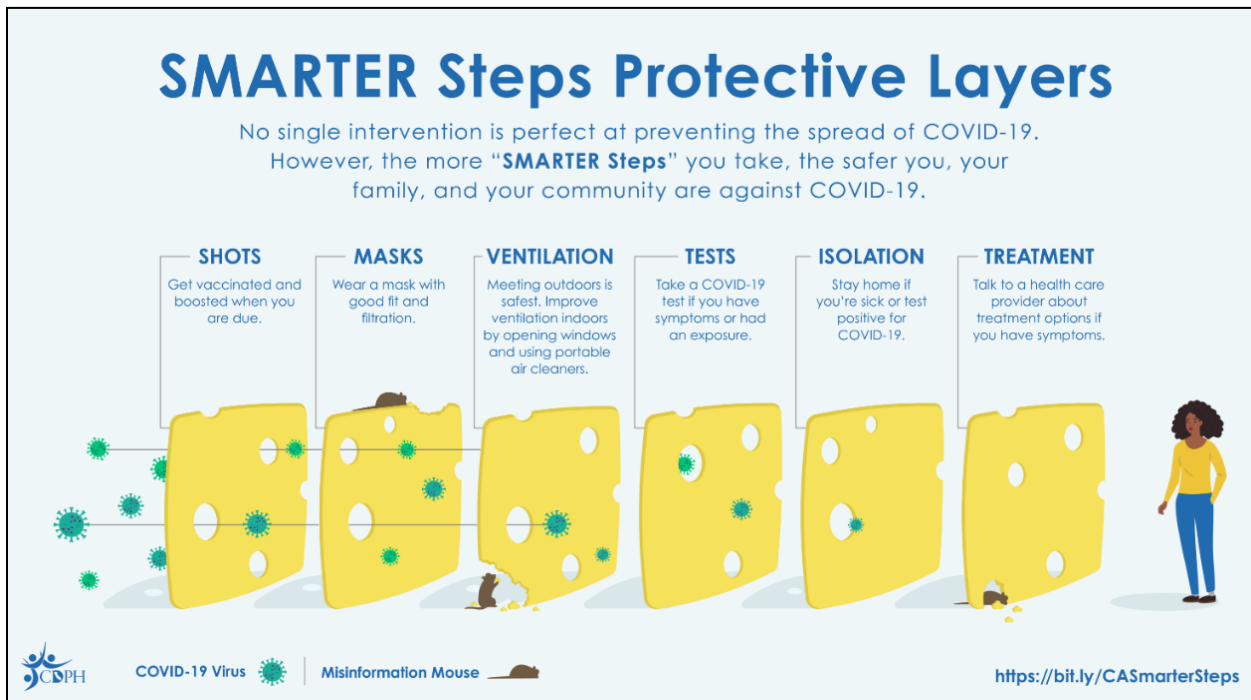
This COVID-19 Safety Plan must be implemented with the understanding that all individuals will work in good faith to meet the intent of the Plan and not the absolute letter of the Plan. Collaboration is essential for ensuring the safety of all students, staff and the community at large. SBCEO values the health, safety and wellbeing of all students, staff and community members equally.

2. COVID-19 Mitigation Strategies

Public Health recognizes that COVID-19 mitigation strategies vary in their effectiveness to provide protection against COVID-19 transmission. While no one strategy is foolproof, the layering of strategies can provide strong protection against COVID-19 transmission. The CDPH has shifted from universal requirements to individual risk determination as the primary driver for the selection of layered mitigations. The CDPH identifies schools’ primary functions for COVID-19 mitigation to be maintaining safe facilities and the provision of access to information and resources.

“California has used science to guide our health protection strategies throughout the pandemic. Data show that because of these strategies, we have saved lives.”-CDPH

SBCEO remains in compliance with all health and safety requirements. Should changes to requirements occur or a situation merit additional response, SBCEO will review current practices and protocols to determine adjustments.



Vaccination

Public Health states that “vaccination remains the most powerful weapon against hospitalization and serious illness.”¹ COVID-19 vaccines are available for individuals over the age of 6 months. Public Health encourages all eligible individuals to get fully vaccinated and stay up-to-date for COVID-19 through [scheduled boosters](#). COVID-19 vaccines are available at no cost at local pharmacies using <https://myturn.ca.gov/> or <https://www.vaccines.gov/>, through local Public Health at <https://publichealthsb.org/vaccine/> and healthcare providers. Public Health encourages parents/guardians with children under the age of 5 to speak with their child’s pediatrician for vaccine availability.

SBCEO supports access to vaccination through countywide communication about vaccines and mobile vaccination availability in coordination with Santa Barbara County Public Health Department (SBCPHD). While vaccination for COVID-19 is not a requirement to attend school, California does require all students participating in in-person schooling to meet other immunization requirements. SBCEO practices proper documentation and legal procedures to ensure immunization requirements are communicated and enforced in accordance with California law. Information regarding required immunizations for in-person schools in California can be found on the [CDPH Shots for School](#) webpage.

Masks

Public Health maintains that masks are simple and highly effective tools that provide protection to oneself and mitigates the transmission of illness.² SBCEO ensures the right of all individuals to voluntarily wear a face covering safely. SBCEO provides multi-ply disposable masks to employees at no cost. Staff may request a respirator (N95 mask) through their supervisor or Human Resources at no cost.

State and local Public Health recommends that all individuals (students and staff) monitor the [CDC COVID-19 Community Level](#) for individual prevention steps that include when mask use is recommended. In addition,



Most Effective

- **KF94 / KN95**
- **Double Mask** (Cloth mask over a medical mask)
- **N95** for older children



Effective

- **Medical Mask (Surgical)**



Least Effective

- **Cloth Mask** (Choose one with three or more fabric layers)

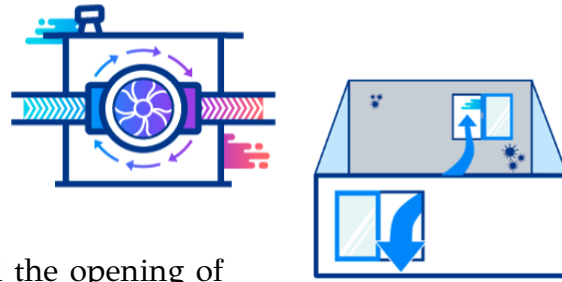
¹ <https://www.cdph.ca.gov/Programs/OPA/Pages/NR20210511.aspx>

² <https://www.cdph.ca.gov/Programs/CID/DCDC/Pages/COVID-19/K-12-Guidance-2022-23-School-Year.aspx>

Public Health recommends students use a mask for 10 days following an indoor exposure to COVID-19. Cal/OSHA requires staff use a mask for 10 days following an indoor exposure to COVID-19. SBCEO reviews exemption requests to mask use in accordance with the [CDPH Guidance for the Use of Face Masks](#) and SBCEO accommodation procedures.

Optimizing Indoor Air Quality

Public Health states that increased circulation of fresh air reduces the risk of COVID-19 and other air-transmitted diseases.³ SBCEO has taken steps to improve indoor air quality in our facilities.



SBCEO encourages using outdoor spaces and the opening of doors and windows as feasible. Ventilation systems have been upgraded with the highest MERV-rated filter that is compatible for that system. Ventilation systems are checked and routinely maintained by trained staff. Staff are encouraged to keep ventilation systems set to “ON” for ongoing fresh air circulation as feasible. SBCEO monitors the air quality index at <https://www.airnow.gov/> to determine the need for additional safety precautions in accordance with emergency operational procedures.

Hand and Respiratory Hygiene

Hand and respiratory hygienic practices can prevent infection of COVID-19 and other diseases according to Public Health.⁴ SBCEO encourages students and staff to wash their hands regularly and cover coughs and sneezes. Teachers instruct and reinforce proper handwashing for students. SBCEO ensures access to supplies for hand and respiratory etiquette including, but not limited to soap, tissues, no-touch trash cans and hand sanitizers with at least 60% ethyl alcohol (for students who can safely use hand sanitizer) in age-appropriate locations.

³

<https://www.cdph.ca.gov/Programs/CID/DCDC/Pages/COVID-19/COVID-19-and-Improving-Indoor-Air-Quality-in-Schools.aspx>

⁴

<https://www.cdph.ca.gov/Programs/CID/DCDC/Pages/COVID-19/K-12-Guidance-2022-23-School-Year.aspx>

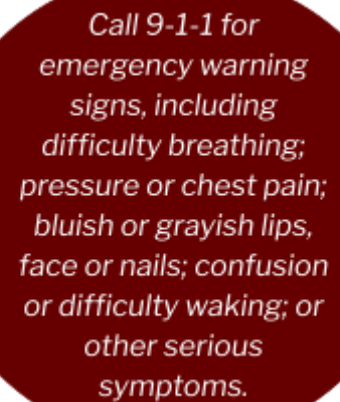
Cleaning of Facilities

Public Health states that routine cleaning is sufficient to remove the virus that causes COVID-19 from surfaces.⁵ SBCEO implements routine and targeted cleaning procedures using [EPA N List products](#) in accordance with the product directions by trained staff.

Illness Protocols

Symptoms of Illness

SBCEO takes steps to ensure that individuals with illness stay home for recuperation and to prevent the spread of illness to others. SBCEO requires sick staff and students stay home until symptoms are resolving, including being free of fever for 24 hours without fever-reducing medication. Students and staff must provide documentation of a negative COVID-19 test result to return in fewer than 10 days from symptom onset. In accordance with the [CDPH Childcare Guidance](#), children in SBCEO childcare and early care programs may return upon symptom improvement after Day 5 from symptom onset although COVID-19 testing is recommended. Questions regarding medical concerns should be directed to healthcare professionals.



Call 9-1-1 for emergency warning signs, including difficulty breathing; pressure or chest pain; bluish or grayish lips, face or nails; confusion or difficulty waking; or other serious symptoms.

⁵

<https://www.cdph.ca.gov/Programs/CID/DCDC/Pages/COVID-19/K-12-Guidance-2022-23-School-Year.aspx>

COVID-19 Positive

SBCEO applies the Cal/OSHA requirement for staff and the SBCPHD recommendations for students in the application of the [CDPH Isolation and Quarantine Guidance](#) following positivity. For childcare and early care programs, SBCEO complies with the [CDPH Childcare Guidance](#) as noted below.

Persons Who Test Positive for COVID-19	Actions
<p>Everyone, regardless of vaccination status, previous infection or lack of symptoms.</p>	<ul style="list-style-type: none"> ● Stay home (PDF) for at least 5 days after the start of symptoms (or after the date of first positive test if no symptoms). ● Isolation can end after Day 5 if symptoms are not present or are resolving and a diagnostic specimen* collected on Day 5 or later tests negative. Children in SBCEO childcare and early care programs are required to test negative to return after Day 5 but must have improving symptoms. ● If unable to test, choosing not to test, or testing positive on Day 5 (or later), isolation can end after Day 10 if fever-free for 24 hours without the use of fever-reducing medications. ● If fever is present, isolation should be continued until 24 hours after fever resolves. ● If symptoms, other than fever, are not resolving, continue to isolate until symptoms are resolving or until after Day 10. If symptoms are severe, or if the infected person is at high risk of serious disease, or if they have questions concerning care, infected persons should contact their healthcare provider for available treatments. ● Per the CDPH masking guidance, infected persons should wear a well-fitting mask around others for a total of 10 days, especially in indoor settings (see masking section below for additional information and applicable exemptions, including those under the age of two). <p>*Antigen test preferred.</p>

COVID-19 Testing Plan

Access to Tests

Public Health has deemed COVID-19 testing to be a valid mitigation measure for the identification of disease and prevention of transmission.⁶ SBCEO regularly consults with SBCPHD for best practices related to COVID-19 testing. SBCEO provides Over-The-Counter (OTC) antigen tests at no cost to students and staff upon request . Families may order OTC tests for free or at cost with reimbursement through insurance through the Centers for Medicare and Medicaid Services at www.CMS.gov. OTC tests are for use by self-administration or parent/guardian-administration in accordance with the product directions. SBCEO has engaged in a collaborative local partnership with APTITUDE Labs for saliva specimen Nucleic Acid Amplification COVID-9 testing available to all school districts in Santa Barbara County who have opted to participate and to all relevant students who have registered. SBCPHD provides [in-person COVID-19 testing](#), [OTC test kit pick-up locations](#) and [Test to Treat locations](#) for the community at no cost at various locations in Santa Barbara County.

Response Testing

In accordance with Cal/OSHA and [CDPH Isolation and Quarantine Guidance](#), SBCEO staff who have tested positive must present a negative test result to Human Resources on or after Day 5 from symptom onset, or the date of the positive test result if asymptomatic, to return to work in less than 10 days with use of a mask around others for the duration of the 10 day timeframe. Staff with close contact exposure must provide a negative test result to Human Resources on Day 3-5 following last exposure with use of a mask around others for 10 days from last exposure to the infected person. Staff with symptoms of illness must provide proof of a negative test result (or doctor's note stating that symptoms are not COVID-19) to return to work in less than 10 days from symptoms onset. In accordance with Public Health recommendations, SBCEO students follow the testing cadence outlined by [CDPH Isolation and Quarantine Guidance](#) for instances of positivity. Childcare and early care programs students are testing exempt after Day 5 following symptoms onset, or if asymptomatic the positive test date, in accordance with [CDPH Childcare Guidance](#). In the event of a Cal/OSHA classified minor or major outbreak, SBCEO will implement increased staff testing in consultation with and at the direction of SBCPHD.

⁶ <https://www.cdph.ca.gov/Programs/CID/DCDC/Pages/COVID-19/School-Testing.aspx>
Santa Barbara County Education Office

Outbreak Reporting and Exposure Notification

In accordance with CCR Section 1700 for schools and applicable CCR Title 22 sections for childcare and early care programs, SBCEO reports potential outbreaks of COVID-19 to (SBCPHD. Childcare and early care programs also report potential outbreaks to the child care licensing division regional office of Santa Barbara Regional Office 17. The SBCEO Associate Superintendent of Human Resources or designee shall provide information on the SBCEO COVID-19 Testing Program to CDPH as needed.

Potential outbreaks are reported for sites with three or more staff cases of COVID-19 over a 14 day period, sites with identified groups that have 10% positivity over a 14 day period and/or when a 5% of a site's total population is positive over a 14 day period. SBCEO provides notification of potential exposure to those who shared indoor airspace for 15 minutes or longer with a COVID-19 positive person during the infectious period. SBCEO notifies staff of worksite exposure to COVID-19 and when staff are known by the District to be a close contact. In times of observed community transmission elevation, SBCEO may provide the community or identified group a "Surge Letter" in lieu of individual exposure notifications while maintaining worksite notification compliance per Cal/OSHA and AB 2693 for staff.

3. Resources

The following list of websites provide resources to support the implementation of this COVID-19 Safety Plan.

- SBCPHD COVID-19: <https://publichealthsb.org/>
- CDPH Safe Schools Hub: <https://schools.covid19.ca.gov/>
- CDPH Parent Page (Language Translation on Webpage):
<https://schools.covid19.ca.gov/pages/parent-page>
- CDC COVID-19 Information:
<https://www.cdc.gov/coronavirus/2019-ncov/index.html>
- CDC Community Levels:
<https://www.cdc.gov/coronavirus/2019-ncov/your-health/covid-by-county.html>
- Cal/OSHA Emergency Temporary Standards:
<https://www.dir.ca.gov/dosh/coronavirus/ETS.html>

