

# Enrollment Growth & Future Building Needs

**MAKING ROOM FOR MORE**

Summer 2023



**AVON**

COMMUNITY  
SCHOOL  
CORPORATION

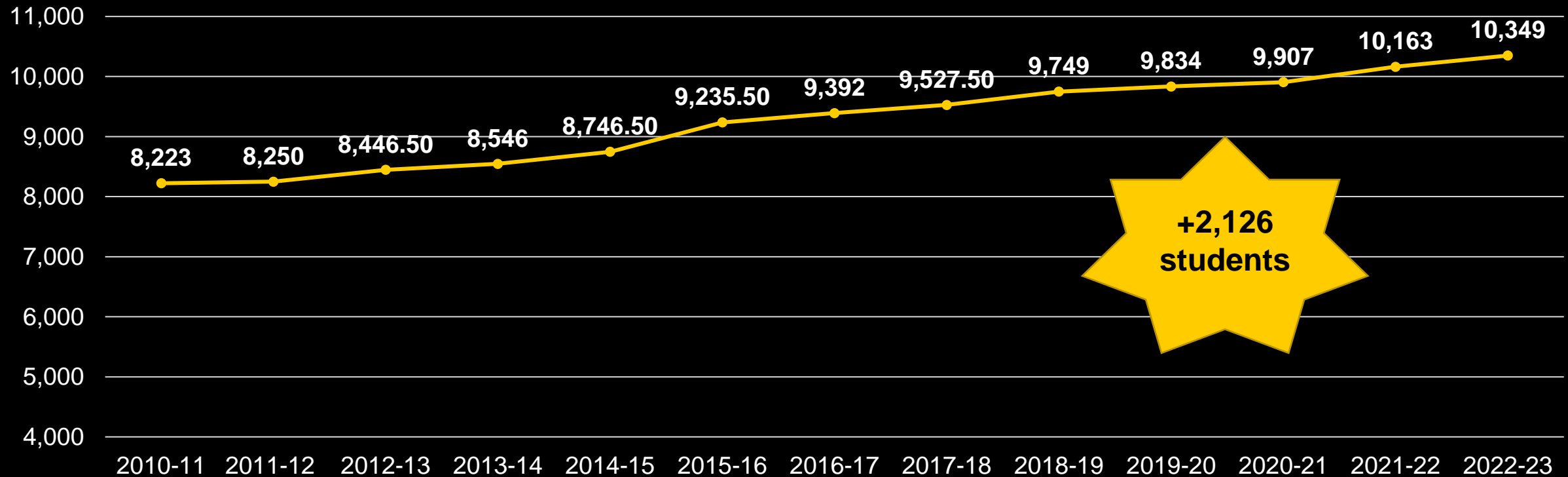
# Introductions

- Scott Wyndham, Superintendent, Avon Community School Corp
- Steve Savoie, Architect, Performance Services
- Greg Wade, Landscape Architect, Context Design

# Purpose

- Provide background information on growth in Avon Schools and plans to accommodate increasing student population
- Share draft plans/layout for construction of new middle school
- Comments / Questions

# ACSC Enrollment Summary 2010 to Present



- River Birch Elementary was last new school constructed in Avon – in **2010**.

# How have we gone 12 years without building a new school?

## Short Term

- **Portable Classrooms** (Cedar, Hickory, Pine Tree, Maple, East, West)
- **Redistricting new subdivisions** to schools with more space before a home is built
- **Repurposing classroom space** (computer labs, LGI, OLC classroom, etc.)
- **Maximizing administrative spaces**  
(ex: Avon Academy, Admin Center, Transportation)

## Longer Term (*already in process*)

- **AHS** - Significant renovation of original building & expansion to accommodate 4,000 students
- **Pine Tree** – Adding classrooms (similar to Hickory/Sycamore)
- **White Oak** – Maximizing a school built in 1963 for preschool program & to free up classroom space in elementary schools

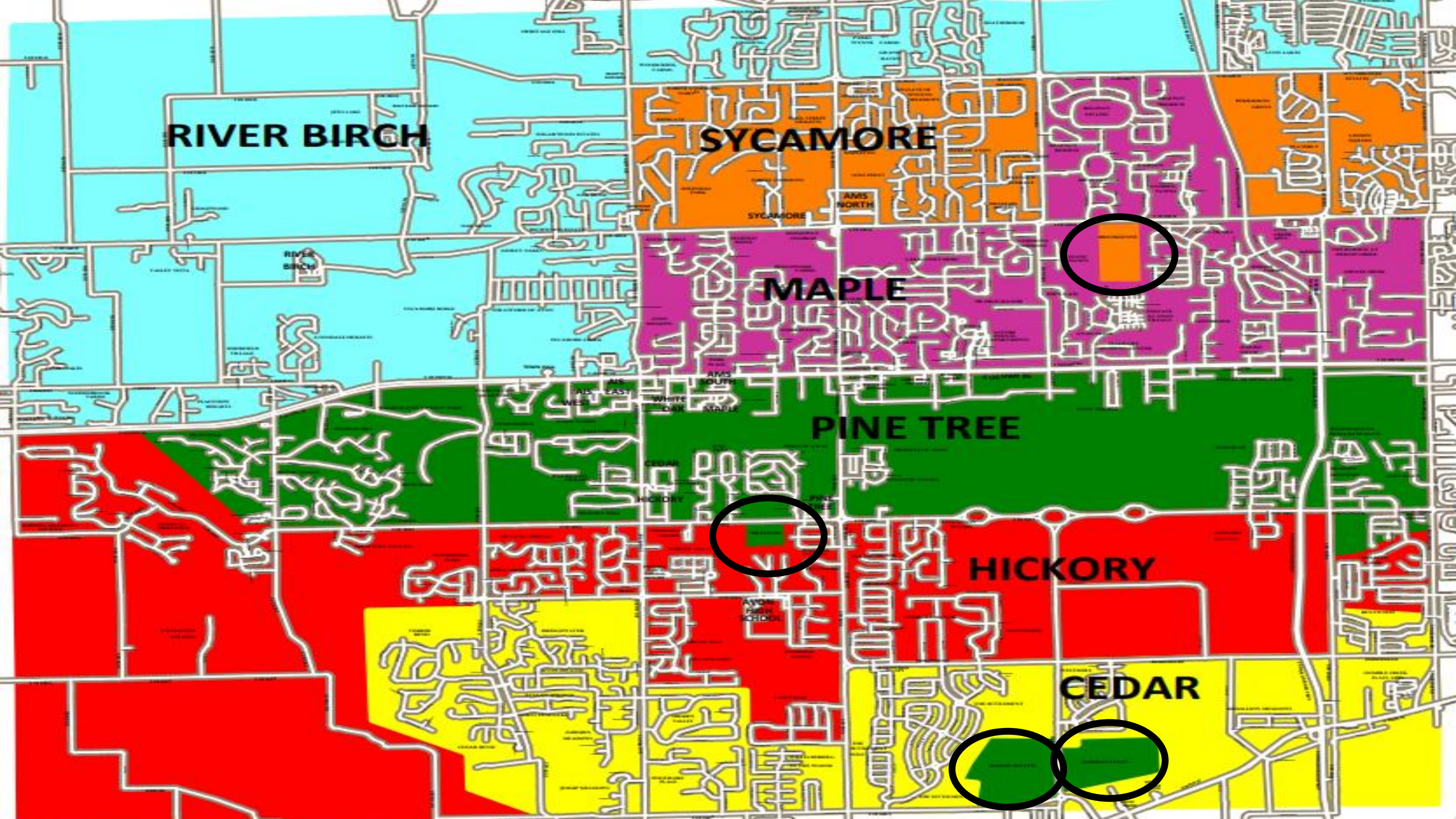
**NO increase to the taxpayer and NO referendum funds**



# We Will Keep Growing....and Need to Talk About Space







**RIVER BIRCH**

**SYCAMORE**

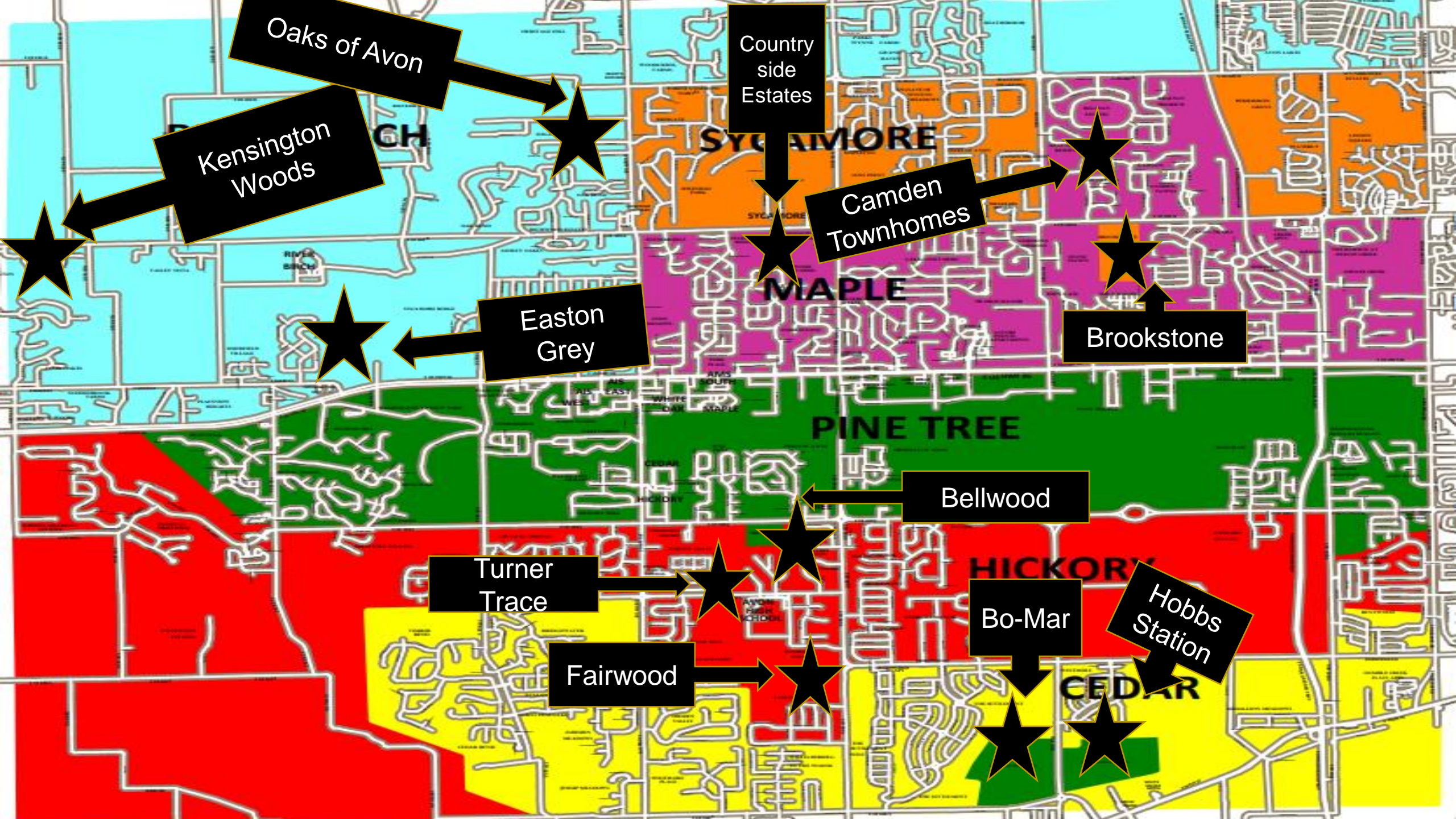
**MAPLE**

**PINE TREE**

**HICKORY**

**CEDAR**





Oaks of Avon

Kensington Woods

Country side Estates

Camden Townhomes

Easton Grey

Brookstone

Bellwood

Turner Trace

Fairwood

Bo-Mar

Hobbs Station



# Base Forecast

More detailed demographic study info is on ACSC website



Base Forecast	20-21A	21-22F	22-23F	23-24F	24-25F	25-26F	26-27F	27-28F	28-29F	29-30F	30-31F	31-32F
Total	9,899	10,290	10,520	10,705	10,915	11,110	11,315	11,435	11,645	11,760	11,910	12,150
Change #	+ 72	+ 391	+ 230	+ 185	+ 210	+ 195	+ 205	+ 120	+ 210	+ 115	+ 150	+ 240
Change %	+ 1%	+ 4%	+ 2%	+ 2%	+ 2%	+ 2%	+ 2%	+ 1%	+ 2%	+ 1%	+ 1%	+ 2%
K-4	3,461	3,605	3,660	3,800	3,795	3,810	3,820	3,840	3,860	3,880	3,910	3,925
5-6	1,564	1,590	1,680	1,590	1,650	1,790	1,780	1,795	1,810	1,815	1,830	1,845
7-8	1,605	1,705	1,740	1,760	1,845	1,755	1,825	1,980	1,970	1,995	2,010	2,020
9-12	3,269	3,390	3,440	3,555	3,625	3,755	3,890	3,820	4,005	4,070	4,160	4,360
KG	604	695	700	705	705	710	715	720	725	730	735	735
Gr 1	726	720	725	730	730	730	730	735	740	740	745	750
Gr 2	626	755	740	750	750	750	750	755	760	765	770	770
Gr 3	734	660	800	780	790	795	795	795	800	805	810	815
Gr 4	771	775	695	835	820	825	830	835	835	840	850	855
Gr 5	737	815	820	730	885	865	875	880	885	885	895	900
Gr 6	827	775	860	860	765	925	905	915	925	930	935	945
Gr 7	789	885	825	910	910	815	985	965	975	985	990	995
Gr 8	816	820	915	850	935	940	840	1,015	995	1,010	1,020	1,025
Gr 9	810	855	855	955	885	980	980	880	1,060	1,045	1,055	1,070
Gr 10	854	835	870	870	970	905	1,000	1,000	900	1,085	1,070	1,085
Gr 11	831	875	850	885	890	990	925	1,020	1,025	920	1,115	1,095
Gr 12	774	825	865	845	880	880	985	920	1,020	1,020	920	1,110

# Referendum Class Size Targets

- Elementary



## Average Class Sizes

Kindergarten

21 Students

Target: 22

1st-4th Grade

21 Students

Target: 25

- Intermediate



## Average Class Sizes

Core Academic

23 Students

Target: 25

- Middle

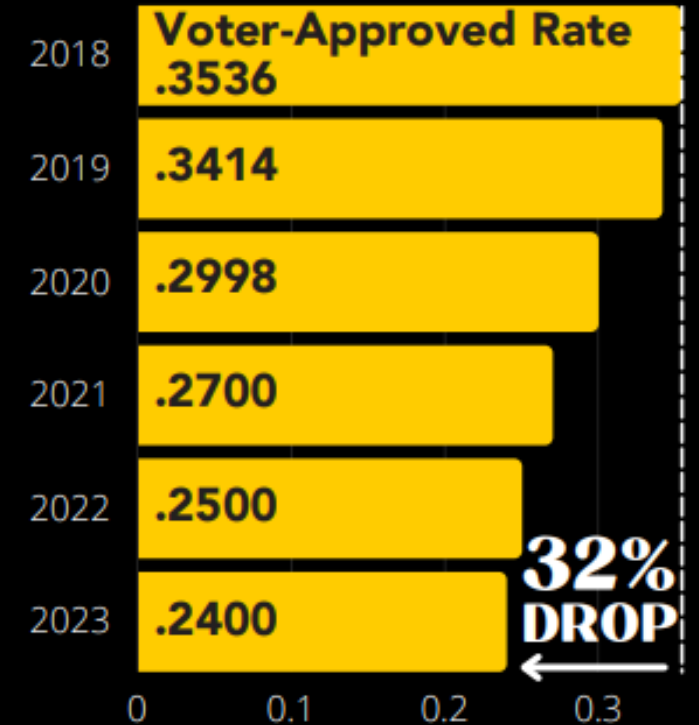


## Average Class Sizes

7th-8th Grade Core Academic

24 Students

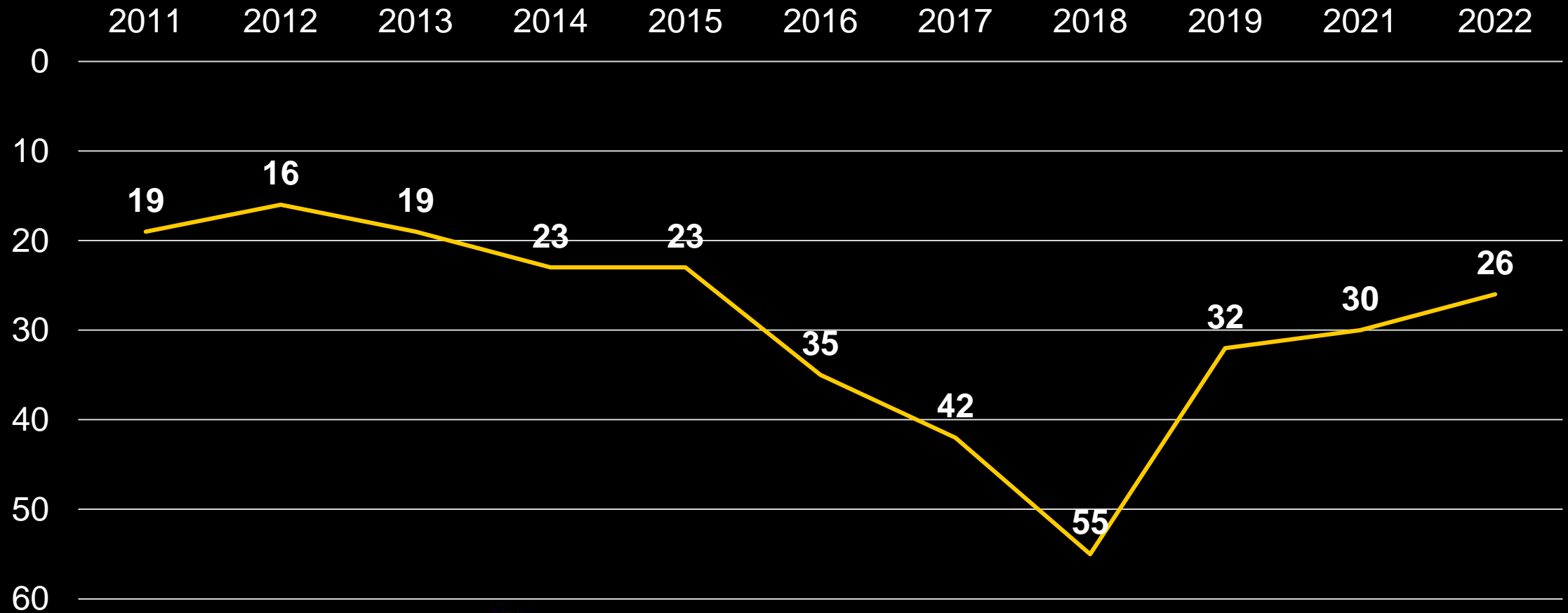
Target: 25



**Declining Tax Rate**



# ACSC Statewide Rank - % of Students Passing Both E/LA & Math ISTEP/ILEARN



# Pine Tree Elementary

BUILDING  
ADDITION

EXPANDED  
BUS  
PARKING

BUILDING  
ADDITION

PARKING  
EXPANSION







## AHS Renovation & Expansion

### **Key Priorities**

- 12 new instructional labs (science, orchestra, family & consumer sciences, art, science, special education, etc.)
- 25+ additional classrooms
- Updated heating/cooling infrastructure
- Expanded hallways, cafeteria, fitness/weight classrooms, locker rooms
- Secure entry/new administration & student services area
- Improved traffic flow/parking
- Updates to existing classrooms (furniture, technology, etc.)



**OASIS & CLASSROOM ADDITION**  
RENDERING VIEW FROM NORTHEAST





**AVON** COMMUNITY  
SCHOOL  
CORPORATION

**New West Main Entrance and Classroom Addition  
Concept Rendering – Bird's Eye View**









**South side** – Fitness Classrooms &  
Additional Classroom



**AVON**

COMMUNITY  
SCHOOL  
CORPORATION

**South entrance**

# New Performing Arts Entrance & Multi-Purpose (Orchestra) Room



**AVON** COMMUNITY  
SCHOOL  
CORPORATION



# K-8 Classroom Spaces Needed 2031-32

School Level	Classrooms Needed		Classrooms Needed by 2031-32 <i>(Projected Growth)</i>		Total Classrooms Needed by 2031-32
	Portables	Repurposed Spaces			
Elementary	5	+	7	+	13
Intermediate	7	+	7	+	9
Middle			4	+	14
				=	25
				=	23
				=	18

**+66 Classrooms  
Needed**



# 2025-26 Plan

Forecast Year	K-5	6-8
	<b><u>8 Schools</u></b> 6 existing West East	<b><u>3 Schools</u></b> 2 existing New
<b>2026-27</b>	<b>Projected Enrollment: 4,695</b> (5) 5-section* schools (3) 4-section* schools	<b>Projected Enrollment: 2,730</b> (avg 910/school)
<b>2031-32**</b>	<b>Projected Enrollment: 4,825</b> (5) 5-section* schools (3) 4-section* schools	<b>Projected Enrollment: 2,965</b> (avg 988/school)

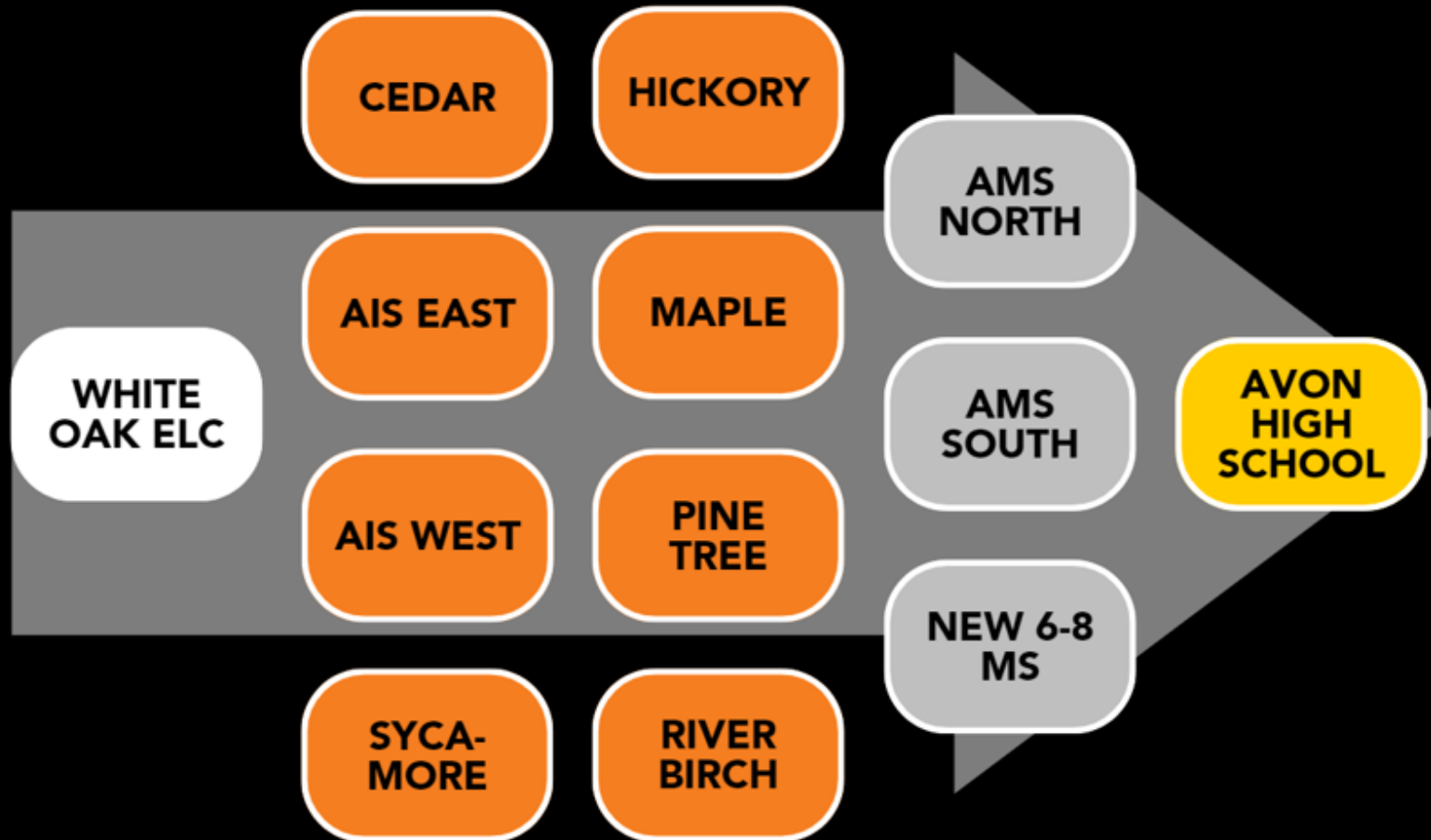
*\*Kdg typically has one additional section due to lower class sizes (22 vs. 25 per class)*

*\*\*Growth projections will need to be monitored to determine additional building needs*





# 2025-26 Plan for Growth in Avon Schools



**\$0**

**Taxpayer Increase**

**\$0**

**Referendum Impact**



# Timeline

- **Fall 2023** – Infrastructure/Earthwork/Site Development & Start of Building Construction
- **Early Spring 2024** – Structural Steel Erected for New School
- **July 2025** – Construction Completed for Start of 2025-26 School Year



**AVON**

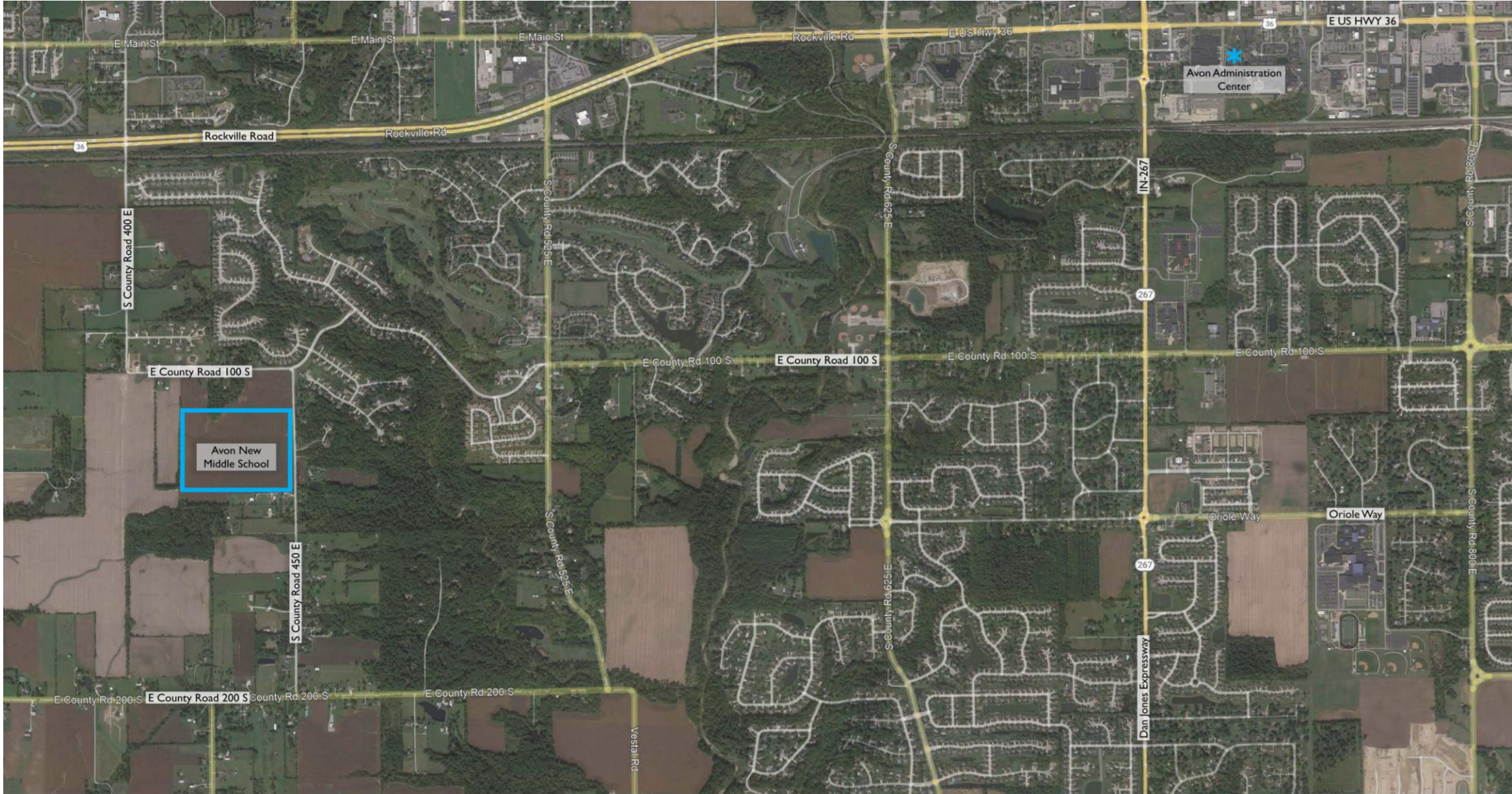
COMMUNITY  
SCHOOL  
CORPORATION



The background features a large, faded version of the Avon Middle School logo. It is a shield-shaped emblem with a yellow background. Inside the shield is a large grey letter 'A'. A yellow and grey bird is perched on the right side of the 'A'. Below the 'A' is a grey building facade with a semi-circular archway. At the bottom of the shield is a yellow banner with the word 'AVON' in grey, flanked by two grey dots.

# **New Middle School Master Site Plan**



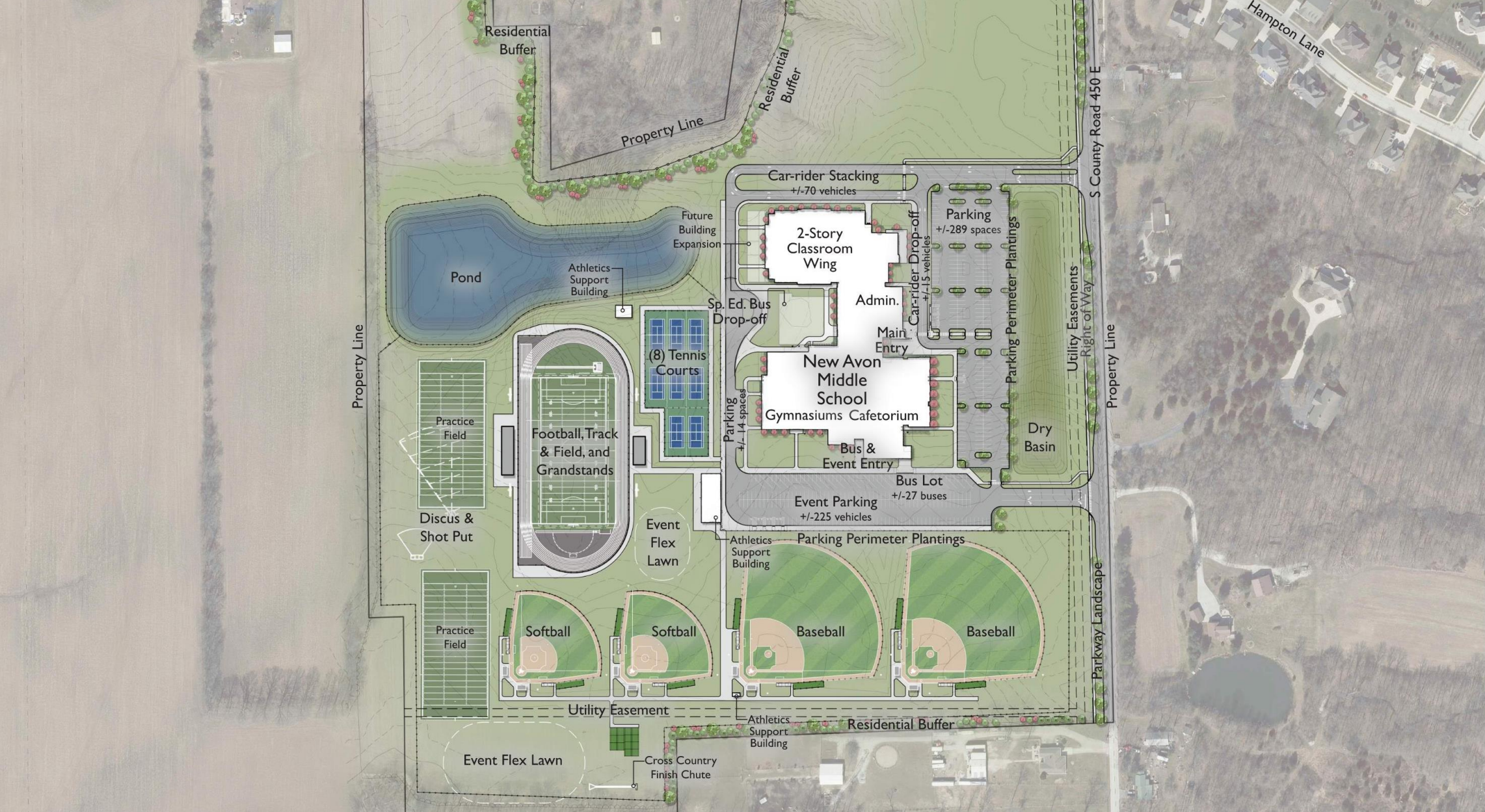


## Avon New Middle School

Vicinity Map | June 2023







A large, faded watermark of the Avon logo is centered in the background. It features a yellow shield with a grey border. Inside the shield is a large grey letter 'A' with a yellow bird perched on it. Below the shield is a grey banner with the word 'AVON' in yellow. The text '(See Aerial Fly-Through Video)' is overlaid on the center of the image in a bold, dark blue font with a slight shadow.

**(See Aerial Fly-Through Video)**













AVON MIDDLE SCHOOL WEST

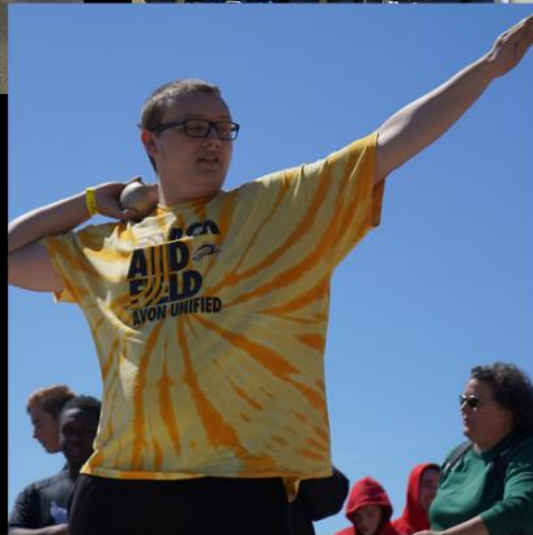
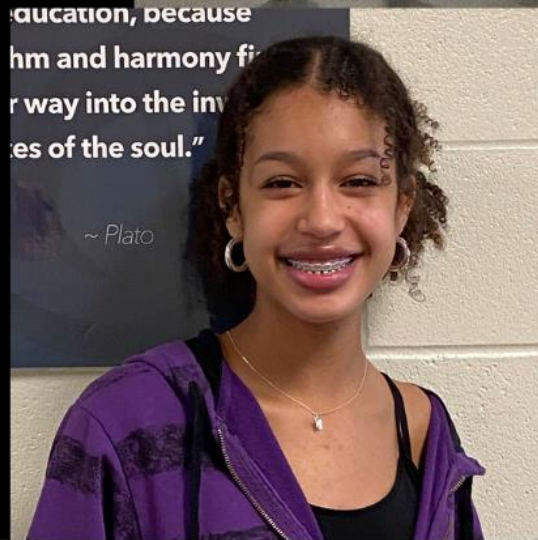


A large, semi-transparent watermark of the Avon logo is centered on the slide. It features a yellow shield with a grey border. Inside the shield is a large grey letter 'A' with a yellow bird perched on it. Below the shield is a grey banner with the word 'AVON' in yellow. The word 'Questions?' is written in a bold, dark blue font across the middle of the shield.

# Questions?



<https://www.avon-schools.org/about/about-avon-schools/strategic-expansion>



**AVON**

COMMUNITY  
SCHOOL  
CORPORATION