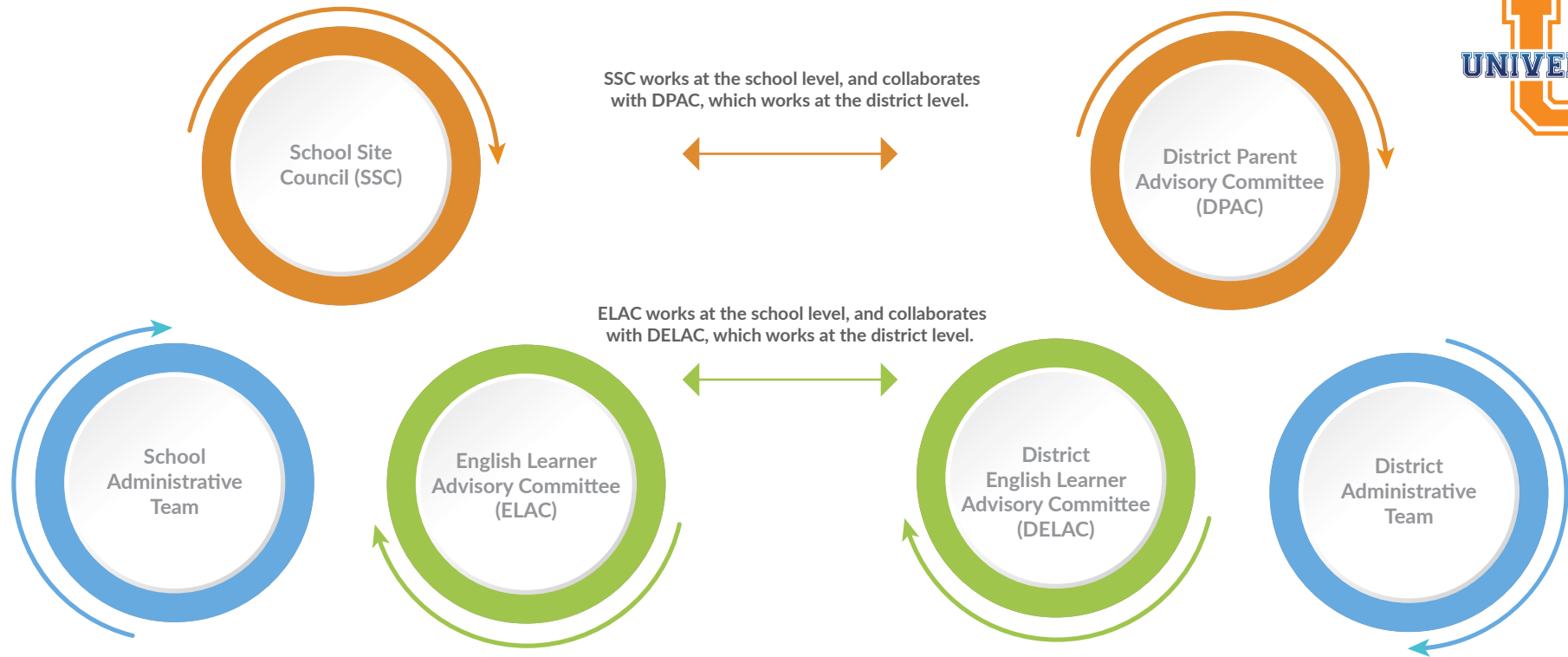


# Advisory Committee Relationships and Roles



S  
c  
h  
o  
o  
l  
L  
e  
v  
e  
l

D  
i  
s  
t  
r  
i  
c  
t  
L  
e  
v  
e  
l



## School Site Council (SSC)

An SSC must be established at all schools. The elected members of the SSC represent parents, students, community members, and school staff in school governance. There is a 10 member minimum and parity in membership between parents/community and school staff is required.

By state law, the School Site Council must oversee the site-based budgeting of categorical funds and the development and monitoring of the School Plan for Student Achievement (SPSA).

The SSC :

- Reviews and analyzes student data
- Solicits community input, including feedback from the English Learner Advisory Council (ELAC)
- Assists the principal in developing the SPSA and school site budget
- Monitors the implementation and effectiveness of the SPSA on an ongoing basis
- Approves the SPSA before it is submitted to the District for final review and board approval

## District Parent Advisory Committee (DPAC)

SSC members that are interested in taking their school-level involvement to the district-level may participate in the District Parent Advisory Committee. DPAC duties include assisting in:

- Providing input on various subjects when there is a need for district-level input, especially on issues relating to the needs of low-income and/or underperforming student groups
- Providing leadership to promote parent involvement at their school site
- Providing input and feedback on the Local Control and Accountability Plan (LCAP) budget

## English Learner Advisory Committee (ELAC)

The English Learner Advisory Committee advises and assists the principal, staff and School Site Council (SSC) in developing:

- School programs for English learners
- School School Plan for Student Achievement (SPSA)
- School needs assessments
- School site annual language census

## District English Learner Advisory Committee (DELAC)

ELAC members that are interested in taking their school-level involvement to the district-level may participate in the District English Learner Advisory Committee meetings.

DELAC duties include:

- Developing/revising the district master plan of education programs and services for English learners
- Conducting district-wide needs assessments on a school-by-school basis
- Establishing district English learner program goals and objectives
- Developing a plan to ensure compliance with teacher and instructional aide requirements
- Analyzing the annual language census
- Reviewing and making recommendations to the district's reclassification procedures
- Reviewing and making recommendations for written notifications to parents