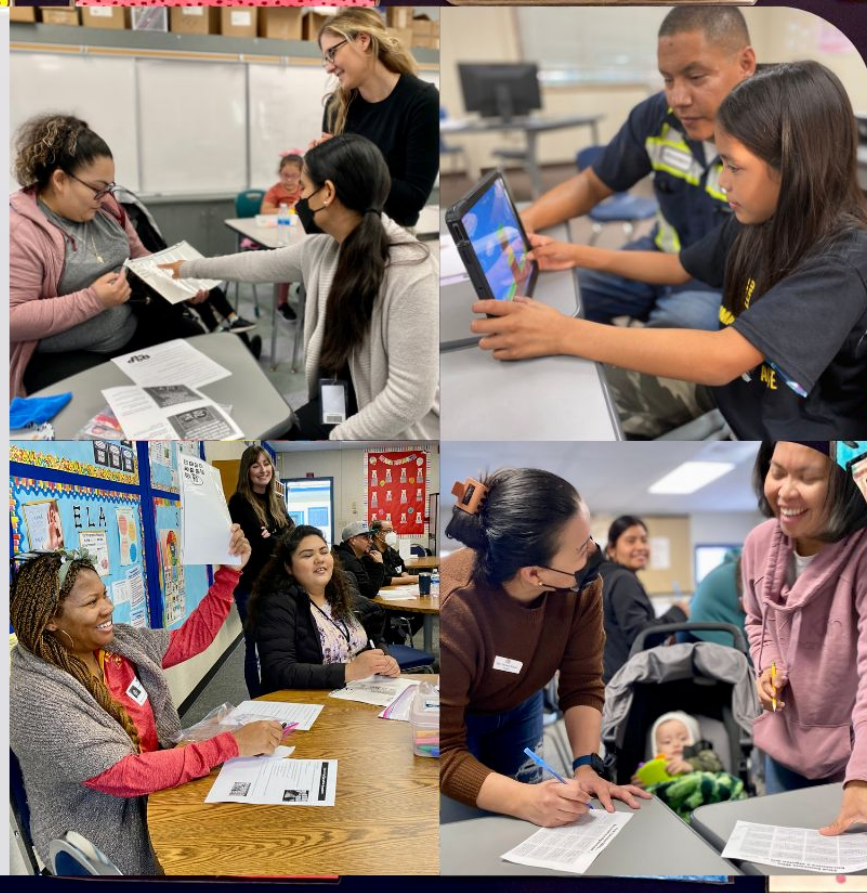




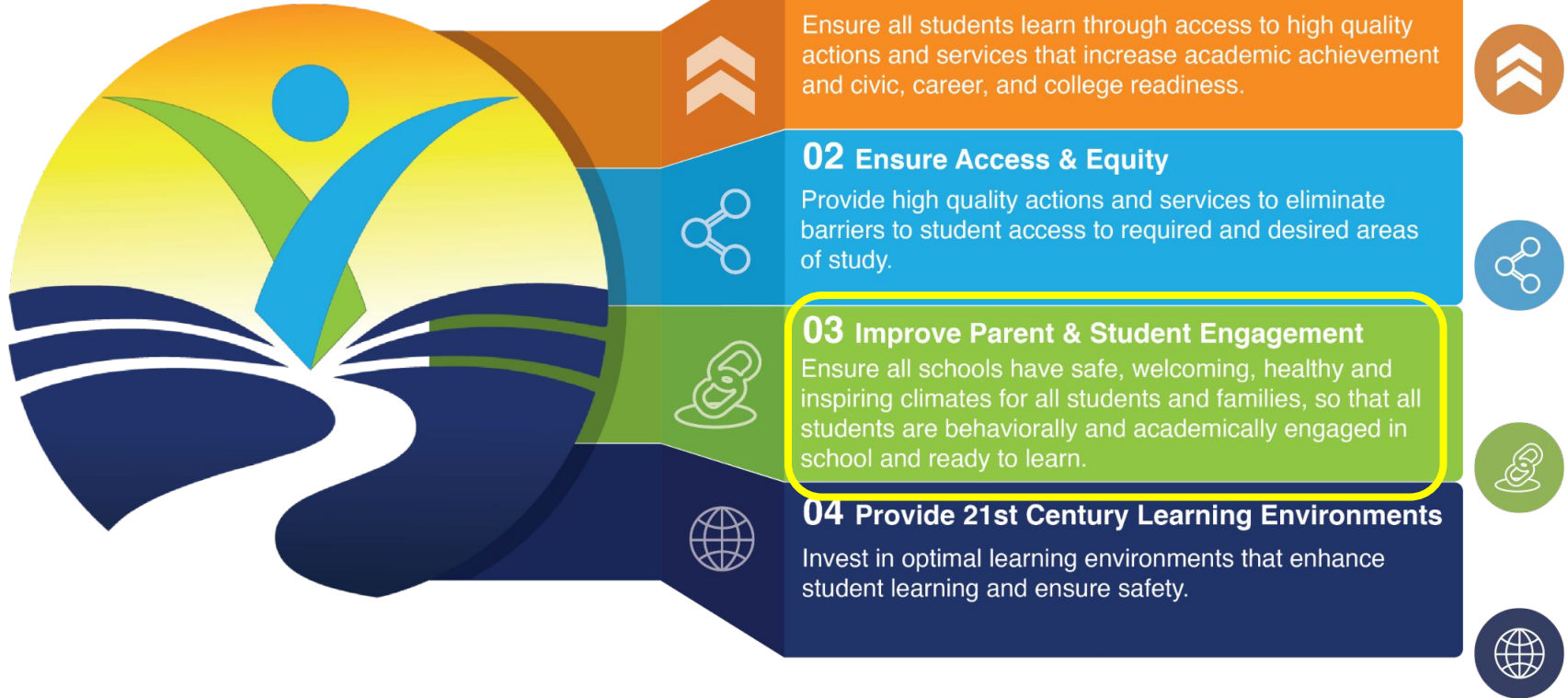
Report of Progress Towards Meaningful Family Engagement to the Board of Trustees

April 13, 2023

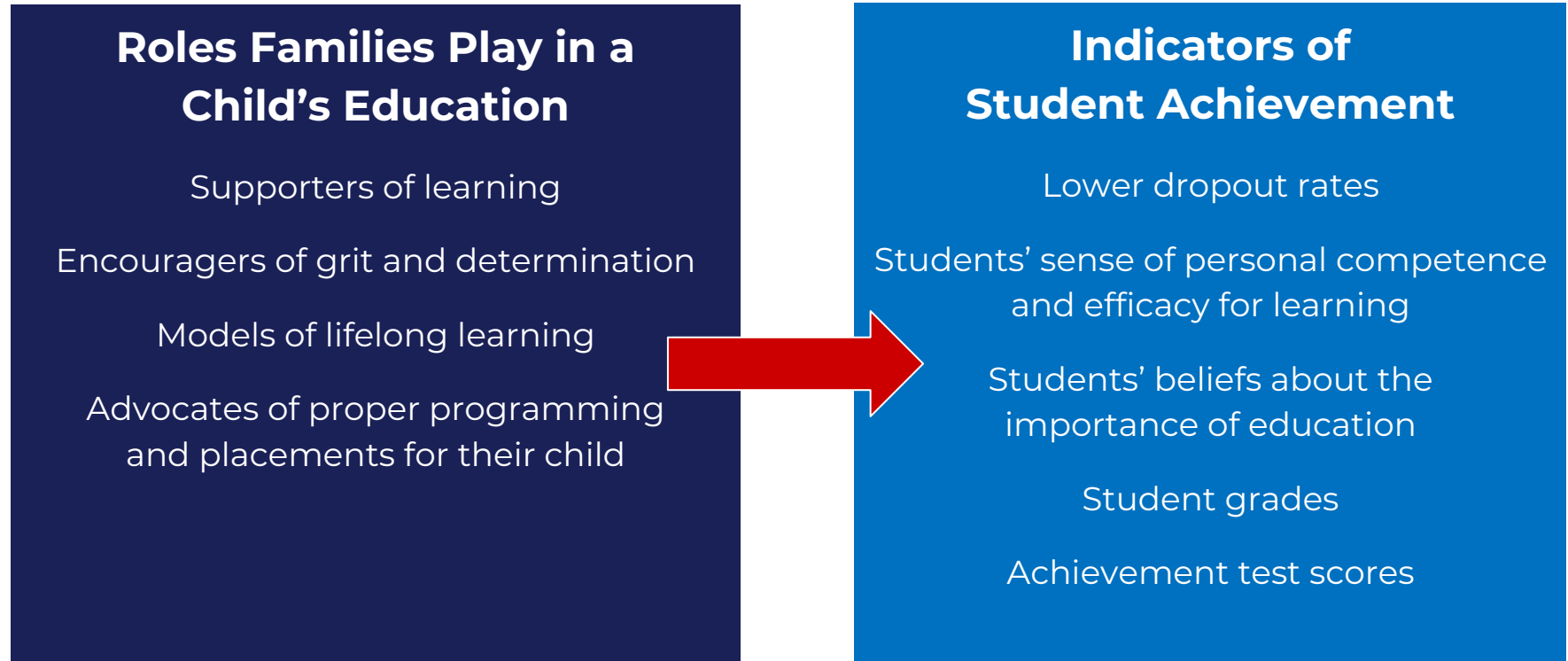
Dr. Julie Kane, Director of Special Projects



District Goals.



We all agree. Family Engagement is important



August 2022. Where we started

- Parent leaders were overwhelmed
- Parents were eager to return on campus to support students and teachers
- Participation in parent advisory committees was dwindling



Volunteer Handbook 2022-2023



4161 West 147th Street, Lawndale, CA 90260

2022-23 Accomplishments. Rebuilding Connectedness



- **Gears in the *Tiers*.** Community Liaisons as drivers
- **Hybrid.** Offer meetings and workshops both in-person and online to meet parents' needs and preferences (*Tier 1*)
- **Self-Efficacy.** Create spaces to build community and knowledge. (*Tier 2*)
- **Sustainability.** Recruit, elect, and mentor new parent leaders (*Tier 3*)



3 Tiers of Engagement



Volunteer Opportunities, Online/In-Person Participation



Parent Advisory Committees



Leadership and Mentorship

Families as partners.

Gears in the Tiers. Community Liaisons as drivers, ownership by ALL staff



COMMUNITY BUILDING

- **Creates a Welcoming Environment:** Ensures new families are welcomed, introduced to school routines and procedures, and connected to resources
- **Supports Volunteers:** Welcomes and onboards volunteers and connects them to school and classroom opportunities
- **Supports teacher/parent relationships:** Facilitates communication and connection between teachers and parents



COMMUNICATIONS

- **Ensures families are informed of school and district events:** Creates weekly newsletters, social media posts, Class dojo and email reminders, workshop calendars
- **Facilitates growth of parent involvement:** Helps parents identify possibilities for involvement by offering multiple pathways and opportunities to connect
- **Ensures access for all:** Eliminates language barriers for families



CAPACITY BUILDING

- **Develops parent engagement:** Collaborates with teacher leaders, social workers, and other content experts to facilitate Family U workshops for parents and staff based on identified needs
- **Develops parent leadership capacity:** Supports parent understanding of and participation in SSC, ELAC, DPAC, and DELAC meetings and responsibilities

Hybrid Meetings.

Offer meetings and workshops both in-person and online to meet parents' needs and preferences (*Tier 1*)

[BIT.LY/LESDYOUTUBE](https://bit.ly/lesdyoutube)

ENGAGE ONLINE

Live, on-demand, and at your pace.

Attend live parent meetings or follow the trimester guide to build knowledge in support of your student throughout the school year.

TIER 1
CONTINUED

TRIMESTER 1	TRIMESTER 2	TRIMESTER 3
Learn the Lingo (3-Part Series)	Math and English Language Development	What is the LCAP?
PowerSchool ClassDojo ClassLink	What is an English Learner and the reclassification process?	State Testing
Zoom 101	Social Emotional Learning Bridge to Better Behavior	Bridge to Middle School
Chromebook 101	Nutrition 101	

CERTIFICATE

AT THE END OF THE VIDEO, PLEASE TELL US ABOUT IT BY COMPLETING THE GOOGLE FORM. A CERTIFICATE OF RECOGNITION WILL BE WAITING FOR YOU!



[LAWNDALESD.NET/FAMILYUCALENDAR](https://lawndalesd.net/familyucalendar)

ENGAGE IN-PERSON

Hands-on learning.

Family University offers many ways for families to engage at school as well as district-wide. Classes range from math, literacy, ESL to technology and wellbeing workshops.

By actively participating in your student's education, you stay informed, get exposed to resources, build a supportive community and gain a better understanding of your student's educational experience.

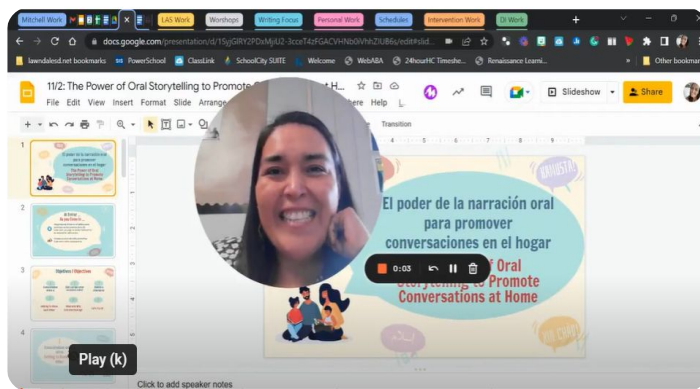


CALENDAR

Stay in the loop!

Frequent the Family University calendar to plan ahead and attend the event of your interest across the district.

TIER 1
CONTINUED



Self-Efficacy. Create spaces to build community and knowledge. *(Tier 2)*



Sustainability. Recruit, elect, and mentor new parent leaders *(Tier 3)*

DPAC



2018-2020



2020-2022



2022-2024

DELAC



Sustainability. Formalize the District Team

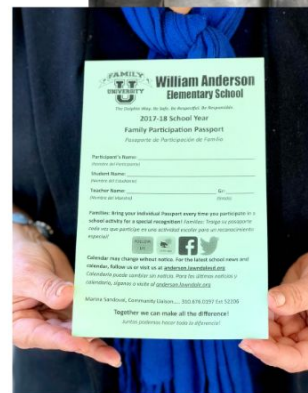


Next Steps. Increase Staff Awareness of FamilyU



PARENT ENGAGEMENT MODEL DISTRICT-WIDE

- Participation Passport
- 4 Tiers of Recognition
- Welcomes families across all campuses
- Sustainability
- Cohesive messaging and branding
- Builds community
- Partnership between parents, schools and district
- Over 200% increased parent participation



Reflection: Need to Build Staff Capacity

LCAP Family Engagement Self-Reflection Tool

Family engagement is an essential strategy for building pathways to college and career readiness for all students and is an essential component of a systems approach to improving outcomes for all students. More than 30 years of research has shown that family engagement can lead to improved student outcomes (e.g., attendance, engagement, academic outcomes, social emotional learning, etc.).

Consistent with the California Department of Education's (CDE's) Family Engagement Toolkit:¹

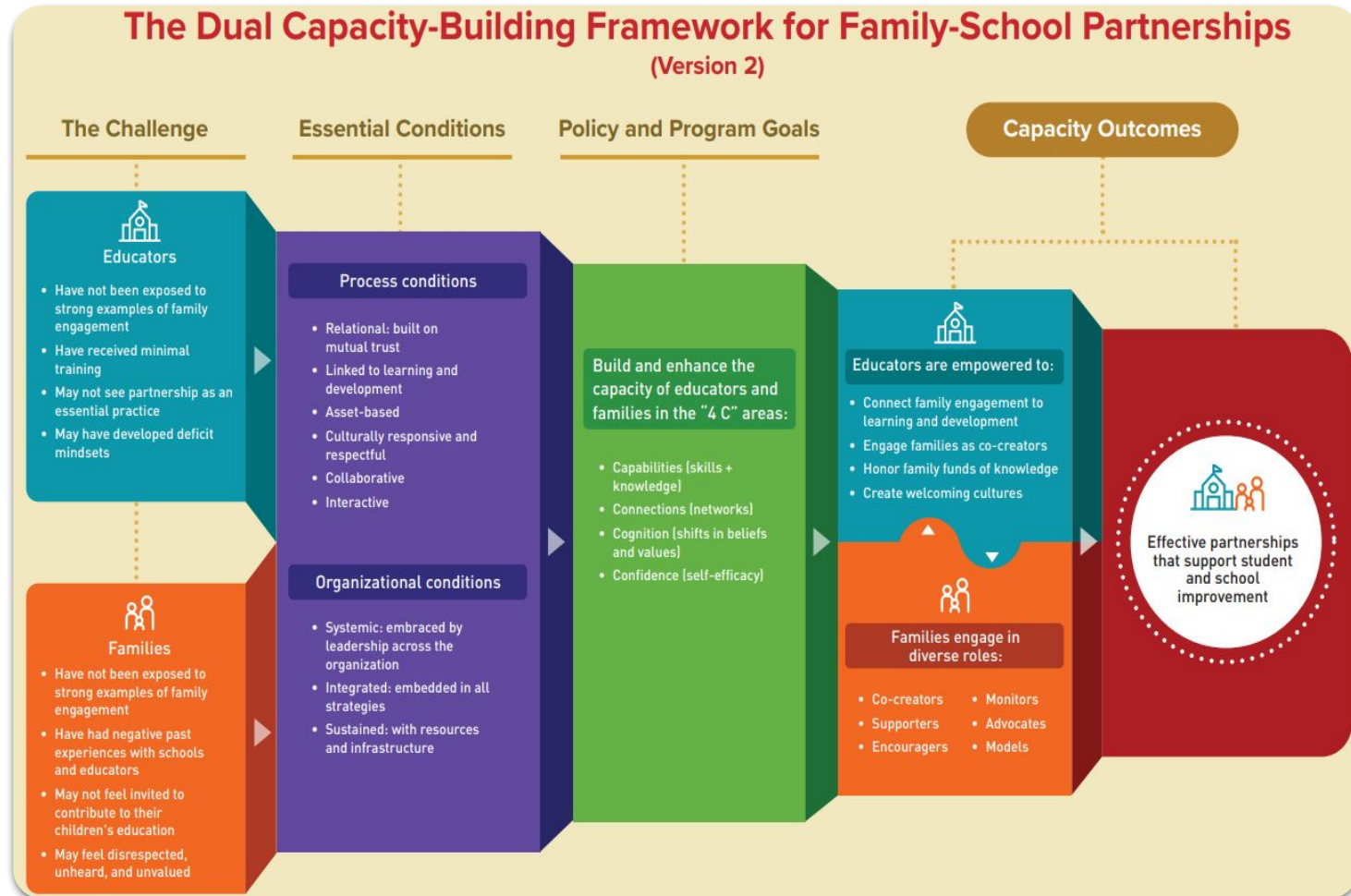
- Effective and authentic family engagement has been described as an intentional partnership of educators, families and community members who share responsibility for a child from the time they are born to becoming an adult.
- To build an effective partnership, educators, families, and community members need to develop the knowledge and skills to work together, and schools must purposefully integrate family and community engagement with goals for students' learning and thriving.

The LCFF legislation recognized the importance of family engagement by requiring LEAs to address Priority 3 within their LCAP. The self-reflection tool described below enables LEAs to reflect upon their implementation of family engagement as part of their continuous improvement process and prior to updating their LCAP.

Areas for Growth. LCAP Family Engagement Self-Reflection Tool

1. Rate the LEA's progress in developing the capacity of staff (i.e., administrators, teachers, and classified staff) to build trusting and respectful relationships with families.
3. Rate the LEA's progress in supporting staff to learn about each family's strengths, cultures, languages, and goals for their children.
5. Rate the LEA's progress in providing professional learning and support to teachers and principals to improve a school's capacity to partner with families.
7. Rate the LEA's progress in implementing policies or programs for teachers to meet with families and students to discuss student progress and ways to work together to support improved student outcomes.

Partners *in* Education. Parents + Teachers



Partnerships. Continuous Improvement



Educators are empowered to:

- Connect family engagement to learning and development
- Engage families as co-creators
- Honor family funds of knowledge
- Create welcoming cultures




Families engage in diverse roles:


- Co-creators
- Supporters
- Encouragers
- Monitors
- Advocates
- Models

Mapp, K. L. & Bergman, E. (2019). Dual capacity-building framework for family-school partnerships (Version 2). Retrieved from: www.dualcapacity.org

Framework. Adoption and Training



Family Engagement Toolkit
Continuous Improvement through an Equity Lens



California Department of Education

California MTSS FRAMEWORK

The California MTSS Framework includes 5 Domains and 11 Features. The needs of the Whole Child are successfully met when ALL Domains and Features are effectively implemented with fidelity.


Whole Child Domain

- Inclusive Academic Instruction Features
- Inclusive Behavior Instruction Features
- Inclusive Transformative Social-Emotional Instruction and Mental Health Support Features

Essential Domains and Features to Support the Whole Child

Administrative Leadership Domain	Integrated Supports Domain	Family and Community Engagement Domain	Inclusive Policy Structure and Practice Domain
Strong & Engaged Site Leadership Features	Organizational Structure Features	Trusting Family Partnerships Features	Strong LEA / School Relationship Features
Strong Educator Support System Features	Strong & Positive School Culture Features	Trusting Community Partnerships Features	LEA Policy Framework Features

Adapted with permission from: SWIFT Education Center. (2016). Domains and Features Placemat. Lawrence, KS. swiftschools.org



LEARNING HEROES

Family Engagement Leadership Institute

Our community of practice is for equity-minded school principals and district leaders to engage with a network of peers in leading a family engagement strategy that directly impacts student learning and well-being.

Our yearlong cohort begins in September 2022.

[CONTACT US](#) [LEARN MORE](#)

Key Components

- Virtual Trainings**
Four half-day group sessions at key points throughout the year
- Problem of Practice**
Apply and deepen the learning by building on existing initiatives
- going Coaching**
Facilitated 1-on-1 small group support provided by expert peers and cohort peers
- Cohort Experience**
Full & whole-group sessions provide support & accountability throughout the year
- Knowledge-capture**
Learning is codified through high-quality notes in order to ensure improvement

Participants can expect to:

- Understand the evidence – Learn what research tells us about how effective family engagement improves student outcomes and school culture, as well as the paths taken by exemplary schools and systems
- Clarify their challenge – Diagnose the problem, identify root-cause analysis
- Lead the learning on a problem of student learning
- Embrace equity that also addresses the relationship between home and school
- Build systems – and stronger systems with families
- Define their role – leader for family engagement

Effective School-Home Partnerships - Module 1: Building Trust with Families

This professional learning resource will support educators to more effectively team up with families and specifically, address how to establish and continuously build trust as the foundation to all school-home partnerships. The example videos, activities, and resources

Effective School-Home Partnerships - Module 2: Sharing Data with Families


This professional learning resource will support educators to more effectively team up with families and specifically, address how to share data in a culturally responsive, respectful, and actionable way. The example videos, activities, and resources draw on both family and

Effective School-Home Partnerships - Module 3: Multiple Measures and Goal Setting

This professional learning resource will support educators to more effectively team up with families and specifically, address how to engage families with multiple measures and goal setting. The example videos, activities, and resources draw on both family and educator research.

Effective School-Home Partnerships - Module 4: Navigating Difficult Conversations

This professional learning resource will support educators to more effectively team up with families and specifically, address how to navigate what can be seen as difficult conversations. The example videos, activities, and resources draw on both family and educator research.



Team. Unconventional?

