

Contents

Our Schools.....	3
Feeder Patterns	5
School Locations	6
Elementary School Districts	7
Middle School Districts	8
High School Districts	9
Overview of School Budgets	10
Budget Summary by Schools.....	11
Agnor-Hurt Elementary	12
Baker-Butler Elementary	14
Broadus Wood Elementary	16
Brownsville Elementary	18
Crozet Elementary	20
Greer Elementary	22
Hollymead Elementary	24
Ivy Elementary School (Formerly Meriwether Lewis Elementary)	26
Mountain View Elementary	28
Murray Elementary	30
Red Hill Elementary	32
Scottsville Elementary	34
Stone-Robinson Elementary	36
Stony Point Elementary.....	38
Woodbrook Elementary.....	40
Burley Middle School	42
Henley Middle School	44
Journey Middle School	46
Lakeside Middle School	48
Walton Middle School	50
Albemarle High School.....	52
Monticello High School.....	54
Western Albemarle High School	56
Community Lab School	58
Center I.....	60
Post High.....	62
Charlottesville Albemarle Technical Education Center (CATEC)	64



Center for Learning & Growth	66
Other Multi-School Services.....	67

Our Schools

Elementary Schools (PK-5)

- Agnor-Hurt
- Baker-Butler
- Broadus Wood
- Brownsville
- Crozet
- Mary C. Greer (Greer)
- Hollymead
- Ivy (K-5 only)
- Mountain View
- Virginia L. Murray (Murray)
- Red Hill
- Scottsville
- Stone-Robinson
- Stony Point
- Woodbrook

Middle Schools (6-8)

- Jackson P. Burley (Burley)
- Joseph T. Henley (Henley)
- Journey
- Lakeside
- Leslie H. Walton (Walton)

High Schools (9-12)

- Albemarle (AHS)
- Monticello (MoHS)
- Western Albemarle (WAHS)

Charter School (6-12)

- Community Lab School

Other Programs

- Post High
- Center for Learning & Growth
- Center 1
- CATEC

School Quality Profiles

For every school division and school in the Commonwealth, the Virginia Department of Education provides a School Quality Profile containing information about student achievement, college and career readiness, program completion, school safety, teacher quality, and other topics of interest to parents and the general public. The School Quality Profile for Albemarle County Public Schools, including the division-level profile and profiles for each of our schools, can be accessed online at <https://schoolquality.virginia.gov/divisions/albemarle-county-public-schools>.

SMART Goals

Albemarle County Public Schools has one overarching goal: Working together as a team, we will end the predictive value of race, class, gender, and special capacities for our children's success through high-quality teaching and learning for all. We seek to build relationships with families and communities to ensure that every student succeeds. In order to meet this goal, the division works with each school to develop SMART goals that are used as benchmarks to monitor our students' and staff's work toward our mission. A SMART goal incorporates several criteria to help guide measurements of success: Specific, Measurable, Attainable, Realistic, and Timely.

For the 2022-23 school year, ACPS developed the following SMART goals for each school:

- As measured by end of year SOL tests, every enrollment group in the school will meet state accreditation targets or reduce the previous failure rate by 10% in all tested subjects.
- We will foster a positive school climate for students and staff as demonstrated through high levels of engagement on the Gallup survey (staff) and the Panorama survey (students and families).

Our Office of Strategic Planning, Accountability & Research, and Program Evaluation then works with each school location to create a Strategic Improvement Plan that administration and staff will use to meet these goals. For more information on these plans, please visit our website at k12albemarle.org/sip.

Feeder Patterns

Due to the large geographic size of Albemarle County, our schools are divided into three “feeder patterns” according to geographical area: Northern, Southern and Western. A feeder pattern consists of the elementary, middle and high schools through which students progress.

	Northern	Southern	Western
Elementary Schools	Agnor-Hurt* Baker-Butler Broadus Wood Greer Hollymead Stony Point* Woodbrook	Mountain View* Red Hill Scottsville Stone-Robinson* Stony Point*	Brownsville Crozet Ivy Murray
Middle Schools	Burley** Journey Lakeside	Burley** Walton	Henley
High Schools	Albemarle	Monticello	Western Albemarle

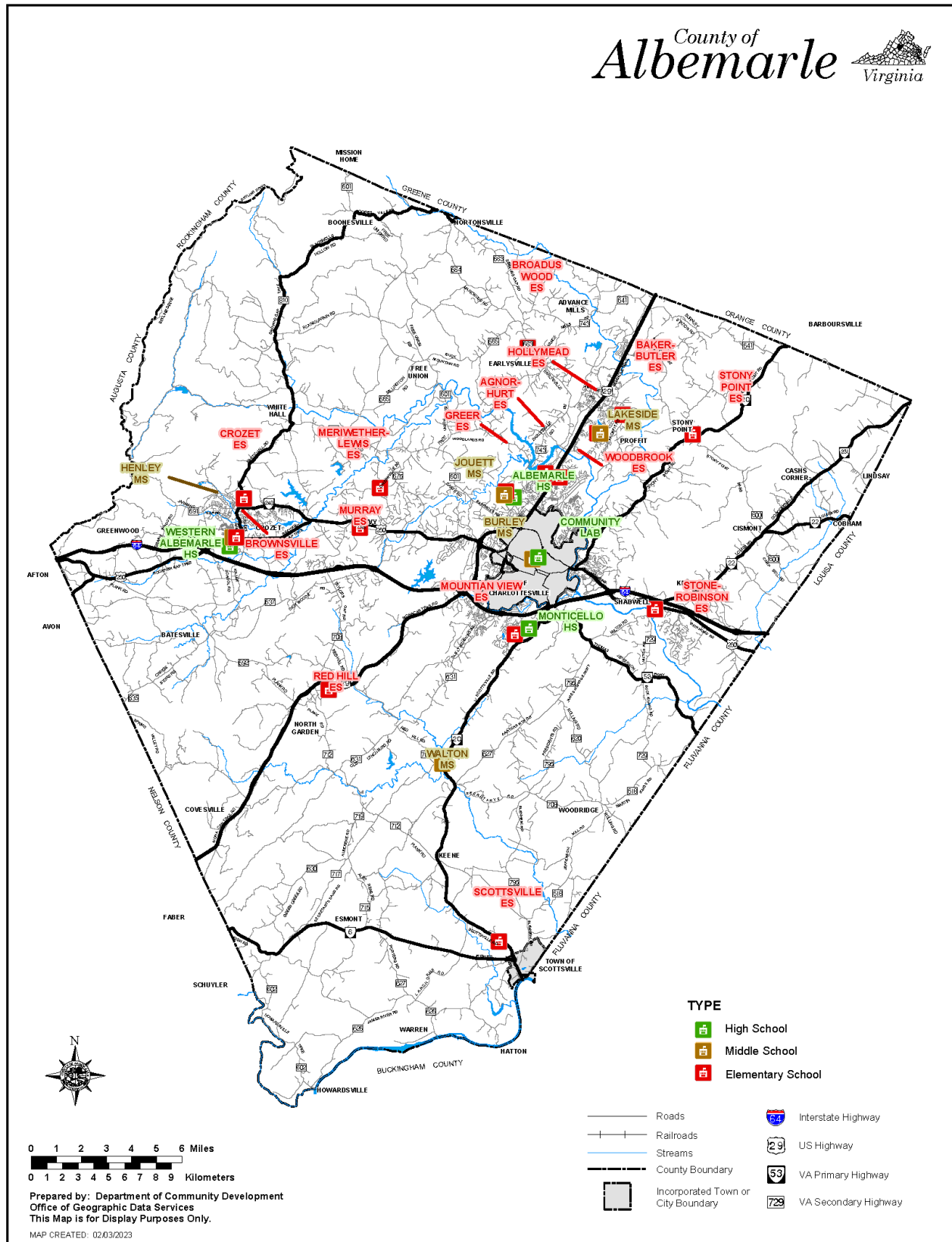
**Student body splits at the middle school level:*

- *Agnor-Hurt Elementary School students will continue to either Burley or Journey Middle School and then Albemarle High School.*
- *Stony Point Elementary School students will continue to either Burley Middle School and then Monticello High School, or Lakeside Middle School followed by Albemarle High School.*
- *Mountain View and Stone-Robinson Elementary School students will continue to either Burley or Walton Middle School and then Monticello High School.*

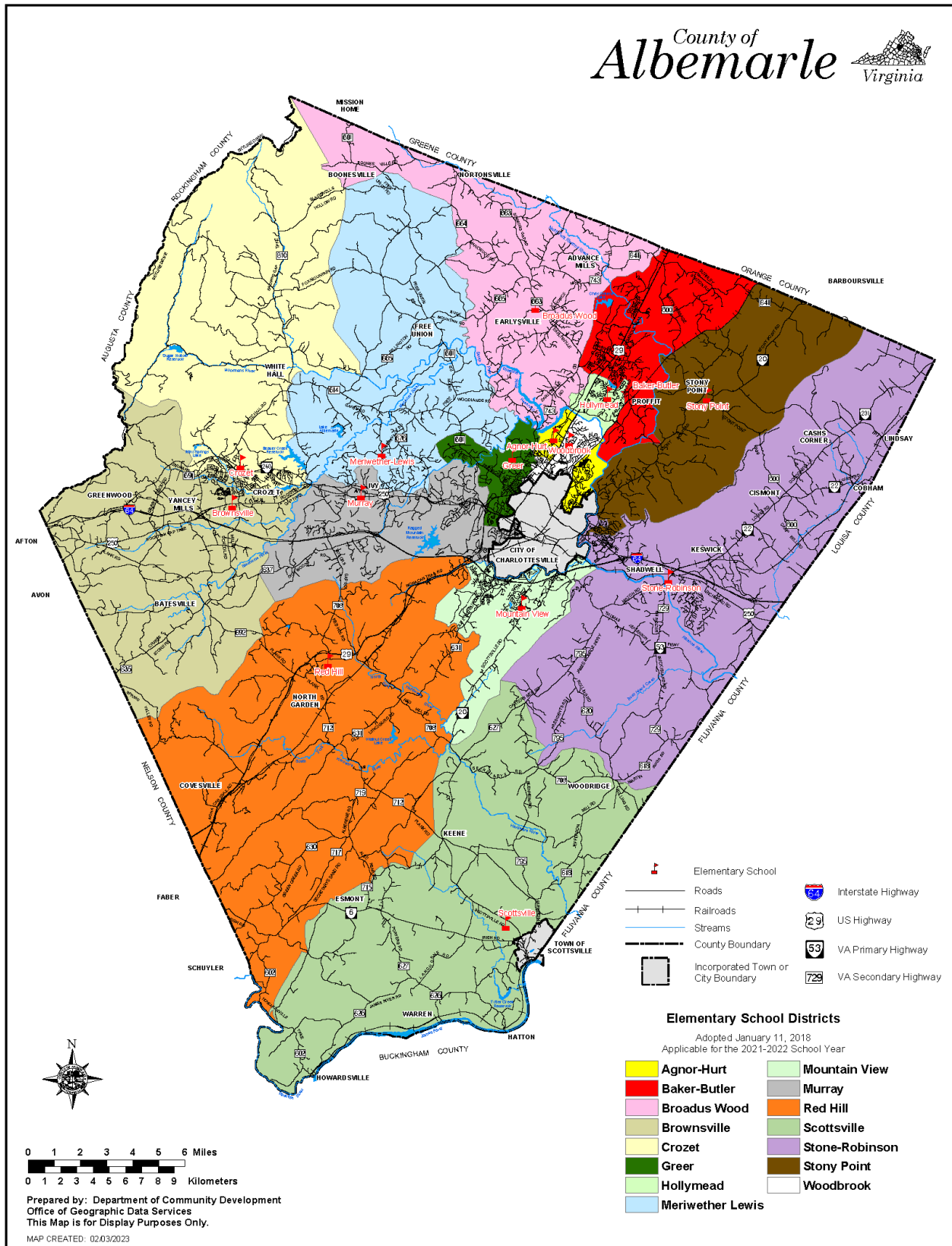
***Student body splits at the high school level:*

- *Burley Middle School students will attend either Albemarle or Monticello High School.*

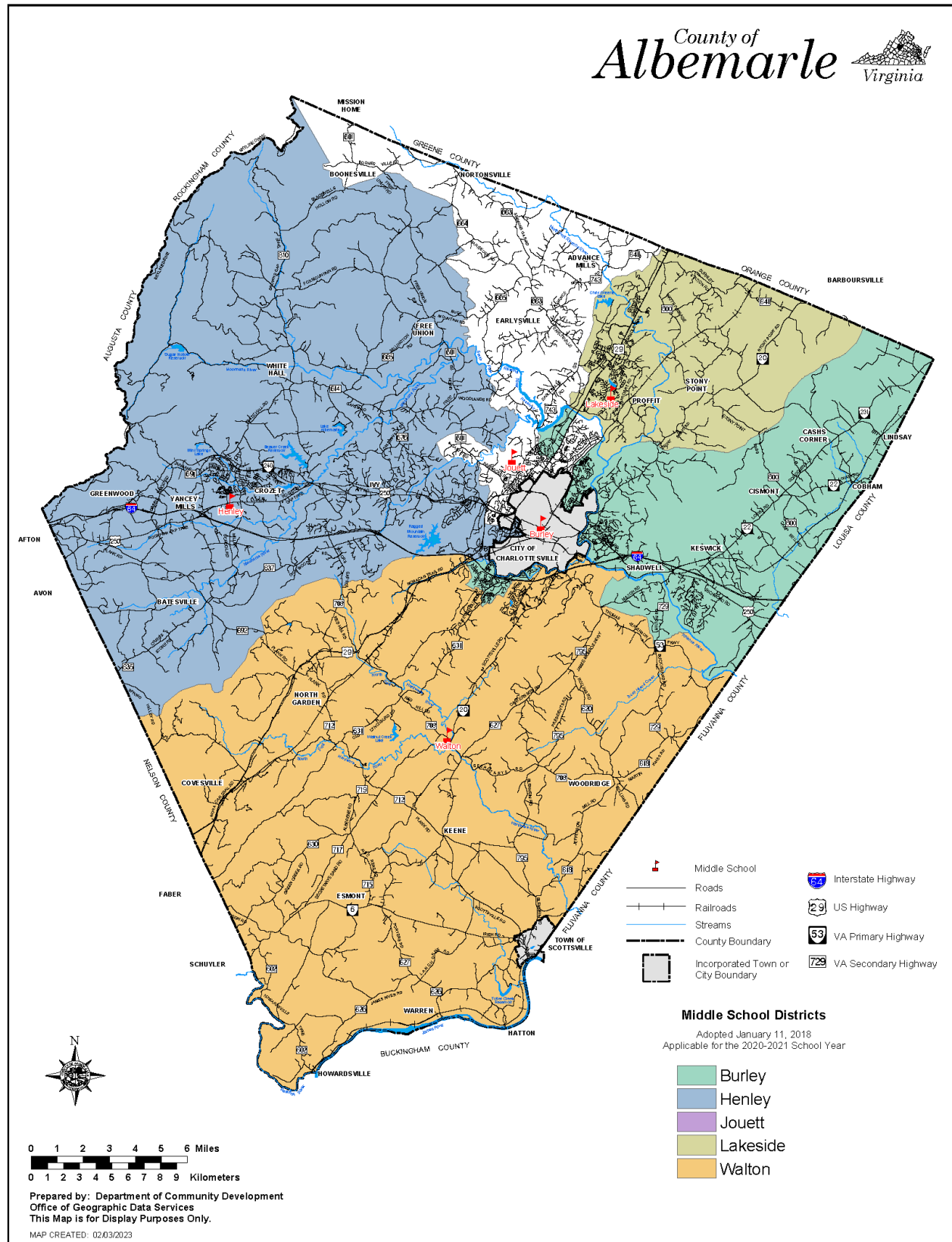
School Locations



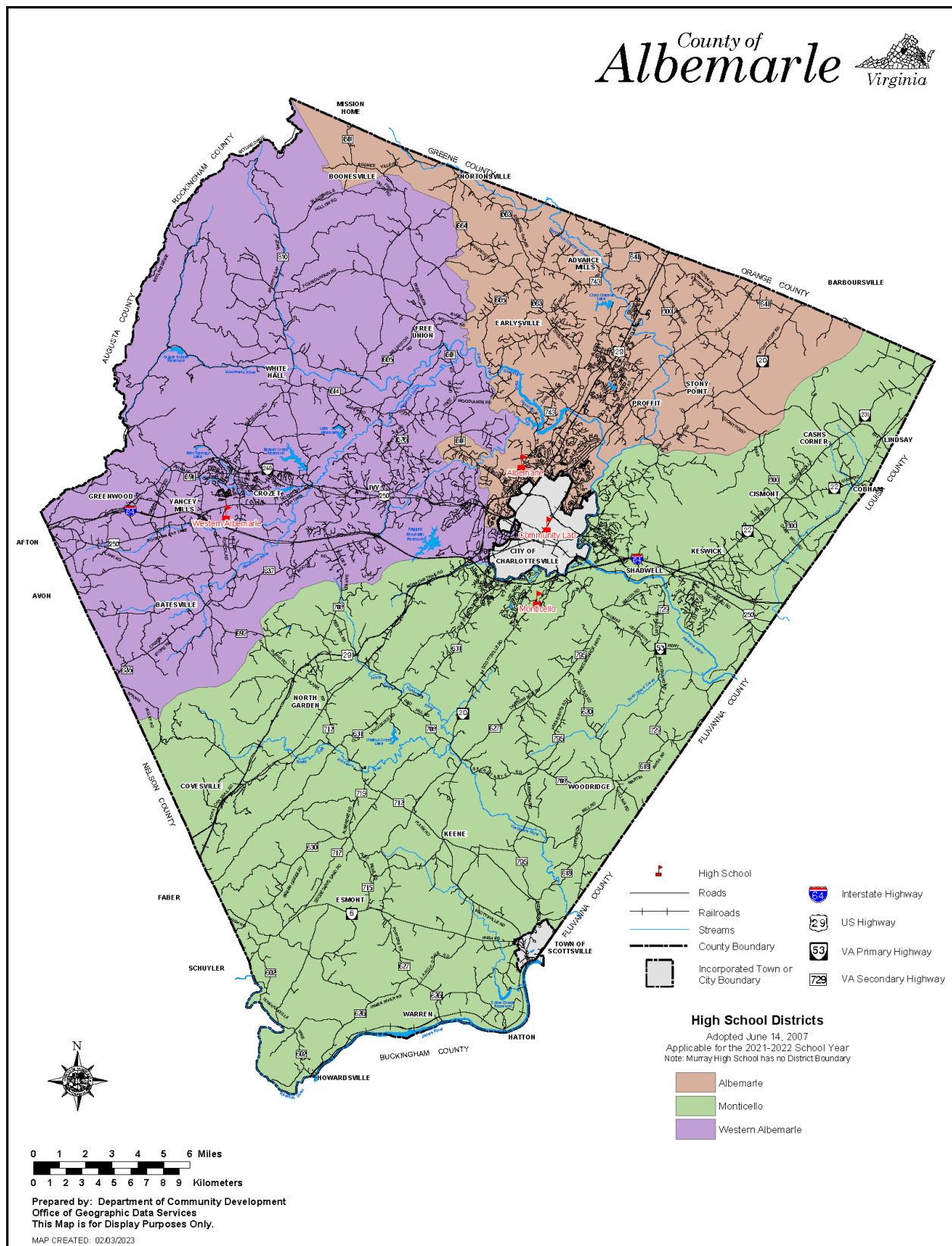
Elementary School Districts



Middle School Districts



High School Districts



Overview of School Budgets

School budgets are primarily driven by and developed based on projected student enrollment and demographics. The majority of budgeted funds can be attributed to staff compensation. Schools are provided staffing resources based on the Division's staffing standards and formulas. The remaining budget is allocated for general operations and determined by various factors, including student enrollment and demographics. Section G contains detailed information about these budget factors and allocations.

FY 2023/24 Changes

Changes in School Budgets are described in Section A and include:

Technical and Non-Discretionary

- Baseline Adjustment
- Health Care
- CATEC
- Building Services Operational Impacts

Compensation

- 5% Salary Increase & Teacher Step Adjustments

Enrollment and Demographics

- Regular Growth
- ESOL Growth
- Differentiated Staffing Restructure
- Special Education – Intensive Support Services
- Federal Revenue Contingency – Tiered Services

Transitioning from One-Time Funding

- Full-time Teaching and EDEP Assistants

New Proposals

- Security Assistants
- Substitute Program Improvements (Phase II)

Budget Summary by Schools

School Type	19-20 Actuals	20-21 Actuals	21-22 Actuals	22-23 Adopted	22-23 FTE	23-24 Adopted	23-24 FTE	Increase	% Increase
Elementary Schools	\$63,313,533	\$62,758,326	\$69,040,234	\$73,223,528	897.44	\$82,872,061	1,003.78	\$9,648,533	13.2%
Agnor-Hurt	\$4,753,511	\$4,754,199	\$5,058,613	\$5,097,329	59.97	\$5,569,770	67.52	\$472,441	9.3%
Baker-Butler	\$6,014,717	\$6,236,089	\$6,828,950	\$7,214,666	88.45	\$8,908,690	108.47	\$1,694,024	23.5%
Broadus Wood	\$2,800,640	\$2,821,758	\$3,217,846	\$3,500,094	42.91	\$4,137,644	52.26	\$637,550	18.2%
Brownsville	\$6,614,957	\$6,775,456	\$7,470,249	\$5,759,446	70.55	\$6,716,286	81.89	\$956,840	16.6%
Crozet	\$3,153,338	\$3,120,415	\$3,431,675	\$5,470,793	62.90	\$5,843,066	66.67	\$372,273	6.8%
Greer	\$5,630,102	\$5,366,192	\$5,721,895	\$5,802,581	70.09	\$6,968,645	84.86	\$1,166,064	20.1%
Hollymead	\$3,997,658	\$3,966,983	\$4,155,807	\$4,085,583	48.36	\$4,847,470	61.83	\$761,887	18.6%
Ivy	\$3,729,299	\$3,214,351	\$3,540,188	\$3,505,591	42.56	\$3,860,256	43.78	\$354,665	10.1%
Mountain View	\$7,098,804	\$7,025,635	\$7,980,789	\$8,425,528	101.36	\$9,626,330	116.23	\$1,200,802	14.3%
Murray	\$2,771,147	\$2,758,647	\$3,130,111	\$3,620,201	46.95	\$3,815,982	47.91	\$195,781	5.4%
Red Hill	\$2,227,076	\$2,024,374	\$2,147,512	\$2,554,685	30.16	\$2,828,430	32.36	\$273,745	10.7%
Scottsville	\$2,449,970	\$2,280,630	\$2,598,491	\$2,814,035	36.37	\$3,003,833	35.49	\$189,798	6.7%
Stone-Robinson	\$4,430,218	\$4,785,431	\$5,104,206	\$5,554,004	73.41	\$5,773,061	72.67	\$219,057	3.9%
Stony Point	\$2,554,922	\$2,372,613	\$2,510,408	\$2,823,385	33.78	\$2,972,499	36.10	\$149,114	5.3%
Woodbrook	\$5,087,174	\$5,255,555	\$6,143,495	\$6,995,607	89.60	\$8,000,099	95.74	\$1,004,492	14.4%
Middle Schools	\$27,268,160	\$29,131,285	\$32,220,308	\$33,455,887	393.46	\$34,469,096	389.75	\$1,013,209	3.0%
Burley	\$5,283,305	\$6,172,446	\$6,595,577	\$6,968,511	81.04	\$6,844,291	76.88	(\$124,220)	-1.8%
Henley	\$6,934,345	\$7,155,003	\$7,893,537	\$7,756,570	91.51	\$8,244,235	94.70	\$487,665	6.3%
Journey	\$5,776,771	\$6,379,652	\$7,312,181	\$7,693,189	93.34	\$7,933,933	88.15	\$240,744	3.1%
Lakeside	\$5,119,104	\$5,056,625	\$5,588,529	\$5,746,799	65.14	\$6,020,033	68.62	\$273,234	4.8%
Walton	\$4,154,636	\$4,367,559	\$4,830,484	\$5,290,818	62.43	\$5,426,604	61.40	\$135,786	2.6%
High Schools	\$40,025,900	\$38,574,693	\$42,774,029	\$48,458,363	526.84	\$50,718,665	532.36	\$2,260,302	4.7%
Albemarle	\$17,534,069	\$16,540,034	\$18,028,732	\$20,447,891	226.90	\$22,046,827	230.12	\$1,598,936	7.8%
Monticello	\$11,320,846	\$11,233,902	\$12,429,882	\$14,189,435	151.86	\$14,309,382	151.06	\$119,947	0.8%
Western Albemarle	\$10,845,381	\$10,283,586	\$11,541,903	\$12,714,290	135.32	\$12,986,349	136.52	\$272,059	2.1%
Center I	\$325,604	\$517,171	\$773,512	\$1,106,747	12.76	\$1,376,107	14.66	\$269,360	24.3%
Community Lab School	\$2,225,687	\$2,384,459	\$2,704,257	\$2,790,475	33.32	\$3,064,911	32.21	\$274,436	9.8%
CATEC	\$1,770,408	\$1,773,175	\$2,230,972	\$2,365,304	3.33	\$2,604,023	5.00	\$238,719	10.1%
Post High		\$419,416	\$483,620	\$550,781	9.33	\$714,490	12.00	\$163,709	29.7%
Center For Learning & Growth		\$196,923	\$387,448	\$462,333	4.34	\$407,513	4.34	(\$54,820)	-11.9%
Multi-School Services	\$6,049,813	\$6,370,722	\$7,690,279	\$11,543,512	114.15	\$12,402,005	120.81	\$858,493	7.4%
Total	\$140,653,501	\$141,609,000	\$157,531,147	\$172,850,183	1,982.21	\$187,252,764	2,100.25	\$14,402,581	8.3%

AGNOR-HURT ELEMENTARY SCHOOL

Home of the Alligators

Agnor-Hurt Elementary

General School Information

- Grades Served: PK-5
- Address: 3201 Berkmar Drive, Charlottesville, VA 22901
- Phone: 434-973-5211
- Principal: Michael Irani

Agnor-Hurt is an elementary school that serves children on the northern edge of Charlottesville. Our community spans 4.1 square miles of Albemarle County along the Rio Road/Hydraulic Road corridor between the city limits of Charlottesville and Albemarle High School. Our core purpose is to establish a community of young learners by learning through building relationships, creating relevance, and holding to high levels of rigor for each and every child every single day.



Michael Irani
Principal
2021-Present



School Quality Profile

For the 2021-22 school year, Agnor-Hurt received a full accreditation status. To view Agnor-Hurt's full School Quality Profile, scan the QR code to the left or visit the [VDOE Agnor-Hurt Elementary School Quality Profile](#) web page.

Student Enrollment

Historical Fall Membership[^]

	2020-2021	2021-2022	2022-2023
Total Enrollment	432	452	438
Students with Disabilities	10.2%	11.1%	12.8%
English Learners	22.5%	25.7%	26.3%
Economically Disadvantaged	47.0%	50.2%	46.3%

Projections for FY 24 Budget

Projected	
Total Enrollment	447
K-5 Enrollment	393
Pre-School Enrollment	54
Economically Disadvantaged	53.1%



Facility Information

- Built in 1992
- 80,956 square feet
- 19.5-acre site

*Agnor-Hurt Elementary School is part of the **Northern Feeder Pattern**. Students continue to either Burley or Journey Middle School and will graduate from Albemarle High School.*

[^] Excludes students who are served in placements outside of ACPS. Does not include MACAA Head Start preschool enrollment.

AGNOR-HURT ELEMENTARY SCHOOL

Home of the Alligators

Agnor-Hurt

Expense	19-20 Actuals	20-21 Actuals	21-22 Actuals	22-23 Adopted	23-24 Adopted	Increase	% Increase
Salary	\$3,274,675	\$3,150,680	\$3,451,451	\$3,590,164	\$3,834,909	\$244,745	6.8%
Other Wages	\$107,368	\$229,157	\$201,070	\$74,122	\$101,101	\$26,979	36.4%
Benefits	\$1,290,047	\$1,298,663	\$1,300,673	\$1,356,642	\$1,552,039	\$195,397	14.4%
Operations	\$81,421	\$75,699	\$105,418	\$76,401	\$81,721	\$5,320	7.0%
Total	\$4,753,511	\$4,754,199	\$5,058,613	\$5,097,329	\$5,569,770	\$472,441	9.3%

State Category Report	19-20 Actuals	20-21 Actuals	21-22 Actuals	22-23 Adopted	23-24 Adopted	Increase	% Increase
Instruction	\$4,445,589	\$4,407,715	\$4,712,547	\$4,687,063	\$5,151,939	\$464,876	9.9%
Admin/Attend&Health	\$59,292	\$63,123	\$78,032	\$70,552	\$82,376	\$11,824	16.8%
Technology	\$77,337	\$78,170	\$78,277	\$82,025	\$99,251	\$17,226	21.0%
Building Services	\$171,292	\$205,191	\$189,758	\$257,689	\$236,204	(\$21,485)	-8.3%
Total	\$4,753,511	\$4,754,199	\$5,058,613	\$5,097,329	\$5,569,770	\$472,441	9.3%

FTE Summary	22-23 FTE	23-24 FTE
Instruction	53.47	60.82
Assistant Principal	1.00	1.00
Clerical	2.00	2.00
Principal	1.00	1.00
Teacher^	40.73	39.40
Teaching Assistant	8.74	17.42
Admin/Attend&Health	1.00	1.00
Nurse	1.00	1.00
Technology	1.00	1.20
Other Technical	0.50	0.60
Teacher^	0.50	0.60
Building Services	4.50	4.50
Custodial	4.50	4.50
Total	59.97	67.52

Adjusted FTE^^	55.6	58.8
----------------	------	------

^Positions included within the Teacher category are detailed in Section G – Staffing Allocations.

^^ Teaching Assistants (TAs) are allocated at a 2 TA to 1 Teacher ratio. This adjusted number is the FTE allocation to the school.

BAKER-BUTLER ELEMENTARY SCHOOL

Home of the Bears

Baker-Butler Elementary

General School Information

- Grades Served: PK-5
- Address: 2740 Proffit Road, Charlottesville, VA 22911
- Phone: 434-974-7777
- Principal: Seth Kennard

Baker-Butler Elementary School is a 2020 United States Department of Education Blue Ribbon School where teachers are striving to create personalized learning experiences for students through engaging, passion-based, and data-informed approaches for instruction. Staff build individual relationships with students and families, and they utilize common pre- and post-assessments to ensure that each child is appropriately challenged, supported, and empowered in their educational journey.



Seth Kennard
Principal
2019-Present



School Quality Profile

For the 2021-22 school year, Baker-Butler received a full accreditation status. For the full School Quality Profile, scan the QR code to the left or visit the [VDOE Baker-Butler Elementary School Quality Profile](#) web page.

Student Enrollment

Historical Fall Membership[^]

	2020-2021	2021-2022	2022-2023
Total Enrollment	635	681	740
Students with Disabilities	12.3%	11.7%	13.0%
English Learners	12.1%	14.0%	14.9%
Economically Disadvantaged	26.8%	23.8%	28.4%

Projections for FY 24 Budget

	Projected
Total Enrollment	759
K-5 Enrollment	747
Pre-School Enrollment	12
Economically Disadvantaged	30.3%



Facility Information

- Built in 2002
- 91,576 square feet
- 55.0-acre site

*Baker-Butler Elementary School is part of the **Northern Feeder Pattern**. Students continue to Lakeside Middle School and will graduate from Albemarle High School.*

[^] Excludes students who are served in placements outside of ACPS. Does not include MACAA Head Start preschool enrollment.

BAKER-BUTLER ELEMENTARY SCHOOL

Home of the Bears

Baker-Butler

Expense	19-20 Actuals	20-21 Actuals	21-22 Actuals	22-23 Adopted	23-24 Adopted	Increase	% Increase
Salary	\$4,138,692	\$4,254,282	\$4,710,822	\$5,009,055	\$6,098,606	\$1,089,551	21.8%
Other Wages	\$208,561	\$192,349	\$223,397	\$132,812	\$207,565	\$74,753	56.3%
Benefits	\$1,580,647	\$1,671,235	\$1,797,149	\$1,964,639	\$2,483,151	\$518,512	26.4%
Operations	\$86,817	\$118,223	\$97,581	\$108,160	\$119,368	\$11,208	10.4%
Total	\$6,014,717	\$6,236,089	\$6,828,950	\$7,214,666	\$8,908,690	\$1,694,024	23.5%

State Category Report	19-20 Actuals	20-21 Actuals	21-22 Actuals	22-23 Adopted	23-24 Adopted	Increase	% Increase
Instruction	\$5,672,772	\$5,903,999	\$6,404,251	\$6,766,617	\$8,420,333	\$1,653,716	24.4%
Admin/Attend&Health	\$55,224	\$30,846	\$64,188	\$60,635	\$61,672	\$1,037	1.7%
Technology	\$93,170	\$81,663	\$92,755	\$100,107	\$121,244	\$21,137	21.1%
Building Services	\$193,551	\$219,580	\$267,756	\$287,307	\$305,441	\$18,134	6.3%
Total	\$6,014,717	\$6,236,089	\$6,828,950	\$7,214,666	\$8,908,690	\$1,694,024	23.5%

FTE Summary	22-23 FTE	23-24 FTE
Instruction	81.10	100.92
Assistant Principal	2.00	2.00
Clerical	3.17	3.00
Principal	1.00	1.00
Teacher^	59.63	65.64
Teaching Assistant	15.30	29.28
Admin/Attend&Health	1.00	1.00
Nurse	1.00	1.00
Technology	1.10	1.30
Other Technical	0.50	0.70
Teacher^	0.60	0.60
Building Services	5.25	5.25
Custodial	5.25	5.25
Total	88.45	108.47

Adjusted FTE^^	80.8	93.8
----------------	------	------

^Positions included within the Teacher category are detailed in Section G – Staffing Allocations.

^^ Teaching Assistants (TAs) are allocated at a 2 TA to 1 Teacher ratio. This adjusted number is the FTE allocation to the school.

BROADUS WOOD ELEMENTARY SCHOOL

Home of the Bobcats

Broadus Wood Elementary

General School Information

- Grades Served: PK-5
- Address: 185 Buck Mountain Road, Earlysville, VA 22936
- Phone: 434-973-3865
- Principal: Amy Morris

At Broadus Wood Elementary School, educators and parents work together to foster a dynamic learning community that promotes academic excellence, character development, and lifelong-learning skills. We believe our work empowers students to thrive as well-rounded, productive citizens who will be positioned to succeed well beyond elementary school. Students here develop a love of learning; learn to work collaboratively and independently; and demonstrate respect for and appreciation of others.



Amy Morris
Principal
2016-Present



School Quality Profile

For the 2021-22 school year, Broadus Wood received a full accreditation status. For the full School Quality Profile, scan the QR code to the left or visit [the VDOE Broadus Wood Elementary School Quality Profile](#) web page.

Student Enrollment

Historical Fall Membership[^]

	2020-2021	2021-2022	2022-2023
Total Enrollment	252	259	286
Students with Disabilities	11.5%	12.7%	13.3%
English Learners	1.2%	1.9%	4.9%
Economically Disadvantaged	16.7%	16.6%	19.9%

Projections for FY 24 Budget

	Projected
Total Enrollment	294
K-5 Enrollment	274
Pre-School Enrollment	20
Economically Disadvantaged	17.8%



Facility Information

- Built in 1936
- 49,852 square feet
- 11.7-acre site

*Broadus Wood Elementary School is part of the **Northern Feeder Pattern**. Students continue to Journey Middle School and will graduate from Albemarle High School.*

[^] Excludes students who are served in placements outside of ACPS. Does not include MACAA Head Start preschool enrollment.
School Locations: D-16

BROADUS WOOD ELEMENTARY SCHOOL

Home of the Bobcats

Broadus Wood

Expense	19-20 Actuals	20-21 Actuals	21-22 Actuals	22-23 Adopted	23-24 Adopted	Increase	% Increase
Salary	\$1,932,944	\$1,885,522	\$2,152,919	\$2,402,825	\$2,867,248	\$464,423	19.3%
Other Wages	\$43,241	\$92,991	\$129,619	\$41,779	\$65,647	\$23,868	57.1%
Benefits	\$778,171	\$804,171	\$885,888	\$998,641	\$1,138,542	\$139,901	14.0%
Operations	\$46,283	\$39,074	\$49,419	\$56,849	\$66,207	\$9,358	16.5%
Total	\$2,800,640	\$2,821,758	\$3,217,846	\$3,500,094	\$4,137,644	\$637,550	18.2%

State Category Report	19-20 Actuals	20-21 Actuals	21-22 Actuals	22-23 Adopted	23-24 Adopted	Increase	% Increase
Instruction	\$2,597,371	\$2,602,393	\$2,954,560	\$3,206,824	\$3,850,589	\$643,765	20.1%
Admin/Attend&Health	\$52,410	\$53,985	\$67,546	\$60,808	\$65,578	\$4,770	7.8%
Technology	\$52,450	\$56,314	\$51,139	\$58,070	\$56,980	(\$1,090)	-1.9%
Building Services	\$98,409	\$109,066	\$144,602	\$174,392	\$164,497	(\$9,895)	-5.7%
Total	\$2,800,640	\$2,821,758	\$3,217,846	\$3,500,094	\$4,137,644	\$637,550	18.2%

FTE Summary	22-23 FTE	23-24 FTE
Instruction	38.31	47.53
Assistant Principal	1.00	1.00
Clerical	2.00	2.00
Principal	1.00	1.00
Teacher^	25.55	27.24
Teaching Assistant	8.76	16.29
Admin/Attend&Health	1.00	1.00
Nurse	1.00	1.00
Technology	0.60	0.73
Other Technical	0.20	0.40
Teacher^	0.40	0.33
Building Services	3.00	3.00
Custodial	3.00	3.00
Total	42.91	52.26

Adjusted FTE^^	38.5	44.1
----------------	------	------

^Positions included within the Teacher category are detailed in Section G – Staffing Allocations.

^^ Teaching Assistants (TAs) are allocated at a 2 TA to 1 Teacher ratio. This adjusted number is the FTE allocation to the school.

BROWNSVILLE ELEMENTARY SCHOOL

Home of the Bees

Brownsville Elementary

General School Information

- Grades Served: PK-5
- Address: 5870 Rockfish Gap Turnpike, Crozet, VA 22932
- Phone: 434-823-4658
- Principal: Jason Crutchfield

Brownsville Elementary opened in 1966 to serve the public education needs of the Greenwood and Crozet community. The school follows the objectives of the division's strategic plan, *Learning for All*, and its mission for equity. Brownsville students are Safe and Caring Learners. Brownsville is a Responsive Classroom school providing engaging instruction that can be observed through continuous improvement, student leadership opportunities and effective learning partnerships.



Jason Crutchfield
Principal
2016-Present



School Quality Profile

For the 2021-22 school year, Brownsville received a full accreditation status. For the full School Quality Profile, scan the QR code to the left or visit the [VDOE Brownsville Elementary School Quality Profile](#) web page.

Student Enrollment

Historical Fall Membership[^]

	2020-2021	2021-2022	2022-2023
Total Enrollment	729	756	591
Students with Disabilities	8.8%	9.7%	11.7%
English Learners	1.1%	1.5%	2.2%
Economically Disadvantaged	13.7%	13.1%	16.9%

Projections for FY 24 Budget

Projected	
Total Enrollment	581
K-5 Enrollment	569
Pre-School Enrollment	12
Economically Disadvantaged	16.4%



Facility Information

- Built in 1966
- 90,550 square feet
- 19.5-acre site

*Brownsville Elementary School is part of the **Western Feeder Pattern**. Students continue to Henley Middle School and will graduate from Western Albemarle High School.*

[^] Excludes students who are served in placements outside of ACPS. Does not include MACAA Head Start preschool enrollment.
School Locations: D-18

BROWNSVILLE ELEMENTARY SCHOOL

Home of the Bees

Brownsville

Expense	19-20 Actuals	20-21 Actuals	21-22 Actuals	22-23 Adopted	23-24 Adopted	Increase	% Increase
Salary	\$4,486,996	\$4,563,022	\$5,075,857	\$3,978,105	\$4,553,661	\$575,556	14.5%
Other Wages	\$186,979	\$184,244	\$223,185	\$114,810	\$152,995	\$38,185	33.3%
Benefits	\$1,840,857	\$1,944,945	\$2,034,940	\$1,552,146	\$1,888,319	\$336,173	21.7%
Operations	\$100,126	\$83,245	\$136,267	\$114,385	\$121,311	\$6,926	6.1%
Total	\$6,614,957	\$6,775,456	\$7,470,249	\$5,759,446	\$6,716,286	\$956,840	16.6%

State Category Report	19-20 Actuals	20-21 Actuals	21-22 Actuals	22-23 Adopted	23-24 Adopted	Increase	% Increase
Instruction	\$6,222,667	\$6,401,031	\$7,000,267	\$5,209,032	\$6,153,993	\$944,961	18.1%
Admin/Attend&Health	\$58,956	\$61,306	\$70,936	\$71,048	\$76,026	\$4,978	7.0%
Technology	\$137,662	\$96,376	\$156,158	\$165,411	\$168,033	\$2,622	1.6%
Building Services	\$195,671	\$216,742	\$242,888	\$313,955	\$318,234	\$4,279	1.4%
Total	\$6,614,957	\$6,775,456	\$7,470,249	\$5,759,446	\$6,716,286	\$956,840	16.6%

FTE Summary	22-23 FTE	23-24 FTE
Instruction	62.20	73.54
Assistant Principal	1.00	1.00
Clerical	2.50	2.50
Principal	1.00	1.00
Teacher^	44.90	45.51
Teaching Assistant	12.80	23.53
Admin/Attend&Health	1.00	1.00
Nurse	1.00	1.00
Technology	1.60	1.60
Other Technical	0.60	0.60
Teacher^	1.00	1.00
Building Services	5.75	5.75
Custodial	5.75	5.75
Total	70.55	81.89

Adjusted FTE^^	64.2	70.1
----------------	------	------

^Positions included within the Teacher category are detailed in Section G – Staffing Allocations.

^^ Teaching Assistants (TAs) are allocated at a 2 TA to 1 Teacher ratio. This adjusted number is the FTE allocation to the school.

CROZET ELEMENTARY SCHOOL

Home of the Eagles

Crozet Elementary

General School Information

- Grades Served: PK-5
- Address: 1407 Crozet Avenue, Crozet, VA 22932
- Phone: 434-823-4800
- Principal: Staci England

The objective of Crozet Elementary is to empower our students to learn creatively and innovatively to discover their interests and talents and grow into lifelong contributors to our local and global community. Crozet Elementary makes every effort to know each student; nurture their mental and physical well-being and maximize their potential and talents through culturally responsive teaching, Responsive Classroom approaches, project/problem/passion-based learning and environmental stewardship.



Staci England
Principal
2022-Present



School Quality Profile

For the 2021-22 school year, Crozet Elementary received a full accreditation status. For the full School Quality Profile, scan the QR code to the left or visit the [VDOE Crozet Elementary School Quality Profile](#) web page.

Student Enrollment

Historical Fall Membership[^]

	2020-2021	2021-2022	2022-2023
Total Enrollment	327	324	513
Students with Disabilities	8.9%	10.2%	6.8%
English Learners	3.4%	2.5%	1.6%
Economically Disadvantaged	24.5%	18.2%	15.8%

Projections for FY 24 Budget

Projected	
Total Enrollment	582
K-5 Enrollment	562
Pre-School Enrollment	20
Economically Disadvantaged	15.5%



Facility Information

- Built in 1990
- 90,653 square feet
- 21.2-acre site

*Crozet Elementary School is part of the **Western Feeder Pattern**. Students continue to Henley Middle School and will graduate from Western Albemarle High School.*

[^] Excludes students who are served in placements outside of ACPS. Does not include MACAA Head Start preschool enrollment.
School Locations: D-20

CROZET ELEMENTARY SCHOOL

Home of the Eagles

Crozet

Expense	19-20 Actuals	20-21 Actuals	21-22 Actuals	22-23 Adopted	23-24 Adopted	Increase	% Increase
Salary	\$2,223,988	\$2,144,835	\$2,342,140	\$3,768,074	\$3,985,583	\$217,509	5.8%
Other Wages	\$61,493	\$92,611	\$135,083	\$92,293	\$146,920	\$54,627	59.2%
Benefits	\$814,012	\$816,224	\$896,150	\$1,484,632	\$1,589,021	\$104,389	7.0%
Operations	\$53,845	\$66,744	\$58,303	\$125,794	\$121,542	(\$4,252)	-3.4%
Total	\$3,153,338	\$3,120,415	\$3,431,675	\$5,470,793	\$5,843,066	\$372,273	6.8%

State Category Report	19-20 Actuals	20-21 Actuals	21-22 Actuals	22-23 Adopted	23-24 Adopted	Increase	% Increase
Instruction	\$2,867,829	\$2,833,590	\$3,066,962	\$5,001,080	\$5,467,326	\$466,246	9.3%
Admin/Attend&Health	\$59,285	\$50,636	\$58,654	\$57,177	\$59,134	\$1,957	3.4%
Technology	\$77,861	\$82,277	\$94,622	\$103,182	\$77,801	(\$25,381)	-24.6%
Building Services	\$148,363	\$153,911	\$211,437	\$309,354	\$238,805	(\$70,549)	-22.8%
Total	\$3,153,338	\$3,120,415	\$3,431,675	\$5,470,793	\$5,843,066	\$372,273	6.8%

FTE Summary	22-23 FTE	23-24 FTE
Instruction	55.55	61.37
Assistant Principal	1.00	1.00
Clerical	2.50	2.50
Principal	1.00	1.00
Teacher^	44.75	44.34
Teaching Assistant	6.30	12.53
Admin/Attend&Health	1.00	1.00
Nurse	1.00	1.00
Technology	1.00	0.80
Other Technical	0.40	0.40
Teacher^	0.60	0.40
Building Services	5.35	3.50
Custodial	5.35	3.50
Total	62.90	66.67

Adjusted FTE^^	59.8	60.4
----------------	------	------

^Positions included within the Teacher category are detailed in Section G – Staffing Allocations.

^^ Teaching Assistants (TAs) are allocated at a 2 TA to 1 Teacher ratio. This adjusted number is the FTE allocation to the school.

GREER ELEMENTARY SCHOOL

Home of the Geckos

Greer Elementary

General School Information

- Grades Served: PK-5
- Address: 190 Lambs Lane, Charlottesville, VA 22901
- Phone: 434-973-8371
- Principal: Stephen Saunders

At Greer, we will change lives and our community. We will reach and challenge every student, every day. Just as we have become leaders in utilizing the Responsive Classroom approach, our goal is to become leaders in eliminating achievement gaps and providing equitable outcomes and opportunities for all students. As the division's most diverse K-5 school, we are committed to creating equal opportunity for every one of our children through an educational program focused on the individual student.



Steve Saunders
Principal
2019-Present



School Quality Profile

For the 2021-22 school year, Greer received a status of accredited with conditions. For the full School Quality Profile, scan the QR code to the left or visit the [VDOE Greer Elementary School Quality Profile](#) web page.

Student Enrollment

Historical Fall Membership[^]

	2020-2021	2021-2022	2022-2023
Total Enrollment	469	480	494
Students with Disabilities	13.6%	12.5%	13.8%
English Learners	34.5%	33.5%	35.2%
Economically Disadvantaged	63.3%	53.8%	52.2%

Projections for FY 24 Budget

Projected	
Total Enrollment	502
K-5 Enrollment	446
Pre-School Enrollment	56
Economically Disadvantaged	68.2%



Facility Information

- Built in 1974
- 99,258 square feet
- 15.0-acre site

*Greer Elementary School is part of the **Northern Feeder Pattern**. Students continue to Journey Middle School and will graduate from Albemarle High School.*

[^] Excludes students who are served in placements outside of ACPS. Does not include MACAA Head Start preschool enrollment.
School Locations: D-22

GREER ELEMENTARY SCHOOL

Home of the Geckos

Greer

Expense	19-20 Actuals	20-21 Actuals	21-22 Actuals	22-23 Adopted	23-24 Adopted	Increase	% Increase
Salary	\$3,960,074	\$3,642,080	\$3,853,749	\$4,073,872	\$4,795,841	\$721,969	17.7%
Other Wages	\$108,043	\$172,629	\$318,978	\$81,194	\$121,001	\$39,807	49.0%
Benefits	\$1,493,722	\$1,462,562	\$1,458,380	\$1,547,432	\$1,954,186	\$406,754	26.3%
Operations	\$68,264	\$88,922	\$90,789	\$100,083	\$97,617	(\$2,466)	-2.5%
Total	\$5,630,102	\$5,366,192	\$5,721,895	\$5,802,581	\$6,968,645	\$1,166,064	20.1%

State Category Report	19-20 Actuals	20-21 Actuals	21-22 Actuals	22-23 Adopted	23-24 Adopted	Increase	% Increase
Instruction	\$5,298,867	\$5,051,936	\$5,354,064	\$5,399,723	\$6,507,211	\$1,107,488	20.5%
Admin/Attend&Health	\$46,785	\$47,137	\$62,399	\$53,817	\$59,678	\$5,861	10.9%
Technology	\$83,014	\$51,065	\$54,302	\$83,046	\$98,625	\$15,579	18.8%
Building Services	\$201,436	\$216,054	\$251,130	\$265,995	\$303,131	\$37,136	14.0%
Total	\$5,630,102	\$5,366,192	\$5,721,895	\$5,802,581	\$6,968,645	\$1,166,064	20.1%

FTE Summary	22-23 FTE	23-24 FTE
Instruction	63.34	77.76
Assistant Principal	1.00	1.00
Clerical	2.50	2.50
Principal	1.00	1.00
Teacher^	48.44	50.29
Teaching Assistant	10.40	22.97
Admin/Attend&Health	1.00	1.00
Nurse	1.00	1.00
Technology	1.00	1.10
Other Technical	0.40	0.60
Teacher^	0.60	0.50
Building Services	4.75	5.00
Custodial	4.75	5.00
Total	70.09	84.86

Adjusted FTE^^	64.9	73.4
----------------	------	------

^Positions included within the Teacher category are detailed in Section G – Staffing Allocations.

^^ Teaching Assistants (TAs) are allocated at a 2 TA to 1 Teacher ratio. This adjusted number is the FTE allocation to the school.

HOLLYMEAD ELEMENTARY SCHOOL

Home of the Hornets

Hollymead Elementary

General School Information

- Grades Served: PK-5
- Address: 2775 Powell Creek Drive Charlottesville, VA 22911
- Phone: 434-973-8301
- Principal: Joe McCauley

Hollymead is a PK-5 elementary school that utilizes student curiosity and an arts integrated curriculum to improve academic and social outcomes for all students. Hollymead, along with its strong and diverse community, creates and expands partnerships, including those with local businesses and our families of military personnel. We strive to embrace the uniqueness of our students, staff, and families, and aim to prioritize our students' health, wellness and social-emotional and academic development.



Joe McCauley
Principal
2022-Present



School Quality Profile

For the 2021-22 school year, Hollymead received a full accreditation status. For the full School Quality Profile, scan the QR code to the left or visit the VDOE [Hollymead Elementary School Quality Profile](#) web page.

Student Enrollment

Historical Fall Membership[^]

	2020-2021	2021-2022	2022-2023
Total Enrollment	349	339	351
Students with Disabilities	15.2%	15.3%	14.8%
English Learners	9.7%	6.8%	7.7%
Economically Disadvantaged	13.2%	12.4%	17.7%

Projections for FY 24 Budget

	Projected
Total Enrollment	372
K-5 Enrollment	342
Pre-School Enrollment	30
Economically Disadvantaged	14.9%



Facility Information

- Built in 1972
- 66,437 square feet
- 20.1-acre site

*Hollymead Elementary School is part of the **Northern Feeder Pattern**. Students continue to Lakeside Middle School and will graduate from Albemarle High School.*

[^] Excludes students who are served in placements outside of ACPS. Does not include MACAA Head Start preschool enrollment.
School Locations: D-24

HOLLYMEAD ELEMENTARY SCHOOL

Home of the Hornets

Hollymead

Expense	19-20 Actuals	20-21 Actuals	21-22 Actuals	22-23 Adopted	23-24 Adopted	Increase	% Increase
Salary	\$2,787,968	\$2,715,379	\$2,788,046	\$2,839,752	\$3,280,939	\$441,187	15.5%
Other Wages	\$82,139	\$95,633	\$234,222	\$62,328	\$90,660	\$28,332	45.5%
Benefits	\$1,078,986	\$1,077,162	\$1,077,901	\$1,110,637	\$1,400,169	\$289,532	26.1%
Operations	\$48,564	\$78,810	\$55,639	\$72,866	\$75,702	\$2,836	3.9%
Total	\$3,997,658	\$3,966,983	\$4,155,807	\$4,085,583	\$4,847,470	\$761,887	18.6%

State Category Report	19-20 Actuals	20-21 Actuals	21-22 Actuals	22-23 Adopted	23-24 Adopted	Increase	% Increase
Instruction	\$3,616,096	\$3,668,260	\$3,852,440	\$3,752,483	\$4,472,176	\$719,693	19.2%
Admin/Attend&Health	\$92,511	\$59,447	\$48,449	\$48,797	\$63,263	\$14,466	29.6%
Technology	\$36,647	\$61,248	\$45,083	\$54,872	\$69,812	\$14,940	27.2%
Building Services	\$252,404	\$178,028	\$209,836	\$229,431	\$242,219	\$12,788	5.6%
Total	\$3,997,658	\$3,966,983	\$4,155,807	\$4,085,583	\$4,847,470	\$761,887	18.6%

FTE Summary	22-23 FTE	23-24 FTE
Instruction	42.66	56.03
Assistant Principal	1.00	1.00
Clerical	2.00	2.00
Principal	1.00	1.00
Teacher^	30.38	30.74
Teaching Assistant	8.28	21.29
Admin/Attend&Health	1.00	1.00
Nurse	1.00	1.00
Technology	0.70	0.80
Other Technical	0.40	0.40
Teacher^	0.30	0.40
Building Services	4.00	4.00
Custodial	4.00	4.00
Total	48.36	61.83

Adjusted FTE^^	44.2	51.2
----------------	------	------

^Positions included within the Teacher category are detailed in Section G – Staffing Allocations.

^^ Teaching Assistants (TAs) are allocated at a 2 TA to 1 Teacher ratio. This adjusted number is the FTE allocation to the school.

IVY ELEMENTARY SCHOOL

Home of the Bluebirds

Ivy Elementary School (Formerly Meriwether Lewis Elementary)

General School Information

- Grades Served: K-5
- Address: 1610 Owensville Road, Charlottesville, VA 22901
- Phone: 434-293-9304
- Principal: Jennifer Underwood

Ivy Elementary School is a caring community that lifts and supports one another. Our staff is responsive to the individual needs of students and works to create a warm, inclusive classroom and is dedicated to the study of Culturally Responsive Teaching, Responsive Classroom, and differentiated instruction.

After undergoing a [School Naming Review](#), Meriwether Lewis Elementary School will officially become Ivy Elementary School on July 1, 2023.



Jennifer Underwood
Principal
2021-Present



School Quality Profile

For the 2021-22 school year, Ivy received a full accreditation status. For the full School Quality Profile, scan the QR code to the left or visit the [VDOE Ivy Elementary School Quality Profile](#) web page.

Student Enrollment

Historical Fall Membership[^]

	2020-2021	2021-2022	2022-2023
Total Enrollment	323	321	343
Students with Disabilities	8.7%	10.0%	9.3%
English Learners	1.2%	1.2%	2.6%
Economically Disadvantaged	9.6%	7.2%	7.6%

Projections for FY 24 Budget

	Projected
Total Enrollment	347
K-5 Enrollment	347
Pre-School Enrollment	0
Economically Disadvantaged	8.0%



Facility Information

- Built in 1988
- 56,450 square feet
- 17.7-acre site

*Ivy Elementary School is part of the **Western Feeder Pattern**. Students continue to Henley Middle School and will graduate from Western Albemarle High School.*

[^] Excludes students who are served in placements outside of ACPS. Does not include MACAA Head Start preschool enrollment.
School Locations: D-26

IVY ELEMENTARY SCHOOL

Home of the Bluebirds

Ivy

Expense	19-20 Actuals	20-21 Actuals	21-22 Actuals	22-23 Adopted	23-24 Adopted	Increase	% Increase
Salary	\$2,564,288	\$2,184,679	\$2,361,637	\$2,405,480	\$2,629,574	\$224,094	9.3%
Other Wages	\$76,475	\$81,908	\$172,737	\$75,416	\$90,691	\$15,275	20.3%
Benefits	\$1,030,475	\$901,956	\$935,009	\$950,751	\$1,052,937	\$102,186	10.7%
Operations	\$58,062	\$45,808	\$70,805	\$73,944	\$87,054	\$13,110	17.7%
Total	\$3,729,299	\$3,214,351	\$3,540,188	\$3,505,591	\$3,860,256	\$354,665	10.1%

State Category Report	19-20 Actuals	20-21 Actuals	21-22 Actuals	22-23 Adopted	23-24 Adopted	Increase	% Increase
Instruction	\$3,474,138	\$2,953,194	\$3,206,694	\$3,165,848	\$3,513,263	\$347,415	11.0%
Admin/Attend&Health	\$49,531	\$50,868	\$66,082	\$59,047	\$63,099	\$4,052	6.9%
Technology	\$62,306	\$60,787	\$93,865	\$96,624	\$80,824	(\$15,800)	-16.4%
Building Services	\$143,324	\$149,501	\$173,546	\$184,072	\$203,070	\$18,998	10.3%
Total	\$3,729,299	\$3,214,351	\$3,540,188	\$3,505,591	\$3,860,256	\$354,665	10.1%

FTE Summary	22-23 FTE	23-24 FTE
Instruction	37.46	38.44
Assistant Principal	1.00	1.00
Clerical	2.00	2.00
Principal	1.00	1.00
Teacher^	26.35	28.15
Teaching Assistant	7.11	6.29
Admin/Attend&Health	1.00	1.00
Nurse	1.00	1.00
Technology	1.10	1.00
Other Technical	0.60	0.60
Teacher^	0.50	0.40
Building Services	3.00	3.34
Custodial	3.00	3.34
Total	42.56	43.78

Adjusted FTE^^	39.0	40.6
----------------	------	------

^Positions included within the Teacher category are detailed in Section G – Staffing Allocations.

^^ Teaching Assistants (TAs) are allocated at a 2 TA to 1 Teacher ratio. This adjusted number is the FTE allocation to the school.

MOUNTAIN VIEW ELEMENTARY SCHOOL

Home of the Colts

Mountain View Elementary

General School Information

- Grades Served: PK-5
- Address: 1757 Avon Street Extended, Charlottesville, VA 22902
- Phone: 434-293-7455
- Principal: Cyndi Wells

Mountain View Elementary is a PK-5 school where all staff works together to improve academic, social-emotional, and personal outcomes for all students. Our vision is to empower our students to actively and confidently thrive every day, and our mission is for all students to achieve academic success to their best ability. Therefore, we embrace our diverse students and families. Together we value antiracism, bilingualism, and multiculturalism.



Cyndi Wells
Principal
2019-Present



School Quality Profile

For the 2021-22 school year, Mountain View received a status of accredited with conditions. For the full School Quality Profile, scan the QR code to the left of visit the [VDOE Mountain View Elementary School Quality Profile](#) web page.

Student Enrollment

Historical Fall Membership[^]

	2020-2021	2021-2022	2022-2023
Total Enrollment	692	724	750
Students with Disabilities	12.6%	12.7%	12.7%
English Learners	19.7%	18.5%	17.3%
Economically Disadvantaged	41.6%	38.4%	46.5%

Projections for FY 24 Budget

Projected	
Total Enrollment	776
K-5 Enrollment	728
Pre-School Enrollment	48
Economically Disadvantaged	42.9%



Facility Information

- Built in 1990
- 92,307 square feet
- 16.1-acre site

*Mountain View Elementary School is part of the **Southern Feeder Pattern**. Students continue to Burley or Walton Middle School and will graduate from Monticello High School.*

[^] Excludes students who are served in placements outside of ACPS. Does not include MACAA Head Start preschool enrollment.
School Locations: D-28

MOUNTAIN VIEW ELEMENTARY SCHOOL

Home of the Colts

Mountain View

Expense	19-20 Actuals	20-21 Actuals	21-22 Actuals	22-23 Adopted	23-24 Adopted	Increase	% Increase
Salary	\$4,909,910	\$4,647,510	\$5,287,020	\$5,814,826	\$6,606,384	\$791,558	13.6%
Other Wages	\$156,568	\$340,635	\$479,099	\$127,546	\$182,063	\$54,517	42.7%
Benefits	\$1,929,086	\$1,935,627	\$2,098,137	\$2,363,950	\$2,698,473	\$334,523	14.2%
Operations	\$103,241	\$101,863	\$116,533	\$119,206	\$139,410	\$20,204	16.9%
Total	\$7,098,804	\$7,025,635	\$7,980,789	\$8,425,528	\$9,626,330	\$1,200,802	14.3%

State Category Report	19-20 Actuals	20-21 Actuals	21-22 Actuals	22-23 Adopted	23-24 Adopted	Increase	% Increase
Instruction	\$6,749,641	\$6,716,124	\$7,496,251	\$7,993,703	\$9,030,481	\$1,036,778	13.0%
Admin/Attend&Health	\$58,919	\$62,914	\$108,844	\$68,889	\$74,810	\$5,921	8.6%
Technology	\$93,997	\$50,676	\$81,129	\$74,529	\$146,912	\$72,383	97.1%
Building Services	\$196,247	\$195,921	\$294,565	\$288,407	\$374,127	\$85,720	29.7%
Total	\$7,098,804	\$7,025,635	\$7,980,789	\$8,425,528	\$9,626,330	\$1,200,802	14.3%

FTE Summary	22-23 FTE	23-24 FTE
Instruction	94.56	107.29
Assistant Principal	2.00	2.00
Clerical	3.50	3.00
Principal	1.00	1.00
Teacher^	70.25	70.89
Teaching Assistant	17.81	30.40
Admin/Attend&Health	1.00	1.00
Nurse	1.00	1.00
Technology	0.80	1.60
Other Technical		0.60
Teacher^	0.80	1.00
Building Services	5.00	6.34
Custodial	5.00	6.34
Total	101.36	116.23

Adjusted FTE^^	92.5	101.0
----------------	------	-------

^Positions included within the Teacher category are detailed in Section G – Staffing Allocations.

^^ Teaching Assistants (TAs) are allocated at a 2 TA to 1 Teacher ratio. This adjusted number is the FTE allocation to the school.

MURRAY ELEMENTARY SCHOOL

Home of the Mustangs

Murray Elementary

General School Information

- Grades Served: PK-5
- Address: 3251 Morgantown Road, Charlottesville, VA 22903
- Phone: 434-977-4599
- Principal: C'ta DeLaurier

The mission of Murray Elementary School is to create a positive, safe and nurturing environment in which all children find success, happiness and a love for learning that remains with them throughout their life. We work daily to develop high levels of both cognitive growth and social-emotional well-being of the students in our learning community and collectively own student growth. We are also committed to developing a growth mindset in children and strong relationships with each child as well as teaching them how to develop positive relationships with others.



C'ta DeLaurier
Principal
2021-Present



School Quality Profile

For the 2021-22 school year, Murray received a full accreditation status. For the full School Quality Profile, scan the QR code to the left or visit the [VDOE Murray Elementary School Quality Profile](#) web page.

Student Enrollment

Historical Fall Membership[^]

	2020-2021	2021-2022	2022-2023
Total Enrollment	235	267	281
Students with Disabilities	11.5%	9.7%	8.5%
English Learners	2.6%	3.4%	3.9%
Economically Disadvantaged	8.1%	9.0%	8.5%

Projections for FY 24 Budget

	Projected
Total Enrollment	294
K-5 Enrollment	282
Pre-School Enrollment	12
Economically Disadvantaged	9.1%



Facility Information

- Built in 1960
- 42,057 square feet
- 20.9-acre site

*Murray Elementary School is part of the **Western Feeder Pattern**. Students continue to Henley Middle School and will graduate from Western Albemarle High School.*

[^] Excludes students who are served in placements outside of ACPS. Does not include MACAA Head Start preschool enrollment.
School Locations: D-30

MURRAY ELEMENTARY SCHOOL

Home of the Mustangs

Murray

Expense	19-20 Actuals	20-21 Actuals	21-22 Actuals	22-23 Adopted	23-24 Adopted	Increase	% Increase
Salary	\$1,933,003	\$1,894,130	\$2,120,818	\$2,523,485	\$2,620,118	\$96,633	3.8%
Other Wages	\$30,097	\$72,359	\$141,048	\$44,834	\$73,810	\$28,976	64.6%
Benefits	\$760,033	\$751,423	\$803,703	\$1,002,609	\$1,054,813	\$52,204	5.2%
Operations	\$48,014	\$40,736	\$64,542	\$49,273	\$67,241	\$17,968	36.5%
Total	\$2,771,147	\$2,758,647	\$3,130,111	\$3,620,201	\$3,815,982	\$195,781	5.4%

State Category Report	19-20 Actuals	20-21 Actuals	21-22 Actuals	22-23 Adopted	23-24 Adopted	Increase	% Increase
Instruction	\$2,516,001	\$2,529,975	\$2,865,773	\$3,323,976	\$3,538,797	\$214,821	6.5%
Admin/Attend&Health	\$77,367	\$43,167	\$51,987	\$48,879	\$53,046	\$4,167	8.5%
Technology	\$67,352	\$46,510	\$63,028	\$74,248	\$58,698	(\$15,550)	-20.9%
Building Services	\$110,427	\$138,995	\$149,324	\$173,098	\$165,441	(\$7,657)	-4.4%
Total	\$2,771,147	\$2,758,647	\$3,130,111	\$3,620,201	\$3,815,982	\$195,781	5.4%

FTE Summary	22-23 FTE	23-24 FTE
Instruction	42.15	43.55
Assistant Principal	1.00	1.00
Clerical	2.00	2.00
Principal	1.00	1.00
Teacher^	24.95	25.26
Teaching Assistant	13.20	14.29
Admin/Attend&Health	1.00	1.00
Nurse	1.00	1.00
Technology	0.80	0.70
Other Technical	0.40	0.40
Teacher^	0.40	0.30
Building Services	3.00	2.66
Custodial	3.00	2.66
Total	46.95	47.91

Adjusted FTE^^	40.4	40.8
----------------	------	------

^Positions included within the Teacher category are detailed in Section G – Staffing Allocations.

^^ Teaching Assistants (TAs) are allocated at a 2 TA to 1 Teacher ratio. This adjusted number is the FTE allocation to the school.

RED HILL ELEMENTARY SCHOOL

Home of the Moos

Red Hill Elementary

General School Information

- Grades Served: PK-5
- Address: 3901 Red Hill School Road, North Garden, VA 22959
- Phone: 434-293-5332
- Principal: Nancy McCullen

Red Hill Elementary School is a rural school located on 11 acres in the Samuel Miller District. Together, the entire Red Hill community engages the mind and heart of each student to become a lifelong learner with the necessary skills to be a contributing member of our world. Through the development of curiosity, imagination, love of learning, respect for diversity, and intellect, all learners reach their highest potential.



Nancy McCullen
Principal
2018-Present



School Quality Profile

For the 2021-22 school year, Red Hill received a status of accredited with conditions. For the full School Quality Profile, scan the QR code to the left or visit the [VDOE Red Hill Elementary School Quality Profile](#) web page.

Student Enrollment

Historical Fall Membership[^]

	2020-2021	2021-2022	2022-2023
Total Enrollment	169	189	199
Students with Disabilities	18.9%	16.9%	17.1%
English Learners	4.7%	5.8%	5.5%
Economically Disadvantaged	48.5%	43.4%	44.7%

Projections for FY 24 Budget

Projected	
Total Enrollment	203
K-5 Enrollment	185
Pre-School Enrollment	18
Economically Disadvantaged	54.2%



Facility Information

- Built in 1973
- 40,085 square feet
- 10.9-acre site

*Red Hill Elementary School is part of the **Southern Feeder Pattern**. Students continue to Walton Middle School and will graduate from Monticello High School.*

[^] Excludes students who are served in placements outside of ACPS. Does not include MACAA Head Start preschool enrollment.

RED HILL ELEMENTARY SCHOOL

Home of the Moos

Red Hill

Expense	19-20 Actuals	20-21 Actuals	21-22 Actuals	22-23 Adopted	23-24 Adopted	Increase	% Increase
Salary	\$1,569,243	\$1,350,215	\$1,447,994	\$1,741,879	\$1,926,732	\$184,853	10.6%
Other Wages	\$27,350	\$75,351	\$83,769	\$59,874	\$73,314	\$13,440	22.4%
Benefits	\$604,646	\$566,189	\$579,980	\$709,493	\$768,160	\$58,667	8.3%
Operations	\$25,837	\$32,620	\$35,769	\$43,439	\$60,224	\$16,785	38.6%
Total	\$2,227,076	\$2,024,374	\$2,147,512	\$2,554,685	\$2,828,430	\$273,745	10.7%

State Category Report	19-20 Actuals	20-21 Actuals	21-22 Actuals	22-23 Adopted	23-24 Adopted	Increase	% Increase
Instruction	\$2,022,557	\$1,830,923	\$1,962,945	\$2,318,133	\$2,606,890	\$288,757	12.5%
Admin/Attend&Health	\$64,867	\$56,019	\$60,852	\$68,613	\$52,456	(\$16,157)	-23.5%
Technology	\$39,570	\$43,949	\$39,596	\$47,712	\$39,587	(\$8,125)	-17.0%
Building Services	\$100,082	\$93,482	\$84,119	\$120,227	\$129,497	\$9,270	7.7%
Total	\$2,227,076	\$2,024,374	\$2,147,512	\$2,554,685	\$2,828,430	\$273,745	10.7%

FTE Summary	22-23 FTE	23-24 FTE
Instruction	26.31	28.86
Assistant Principal	1.00	1.00
Clerical	2.00	2.00
Principal	1.00	1.00
Teacher^	18.25	19.13
Teaching Assistant	4.06	5.73
Admin/Attend&Health	1.00	1.00
Nurse	1.00	1.00
Technology	0.60	0.50
Other Technical	0.60	0.20
Teacher^		0.30
Building Services	2.25	2.00
Custodial	2.25	2.00
Total	30.16	32.36

Adjusted FTE^^	28.1	29.5
----------------	------	------

^Positions included within the Teacher category are detailed in Section G – Staffing Allocations.

^^ Teaching Assistants (TAs) are allocated at a 2 TA to 1 Teacher ratio. This adjusted number is the FTE allocation to the school.

SCOTTSVILLE ELEMENTARY SCHOOL

Home of the Tigers

Scottsville Elementary

General School Information

- Grades Served: PK-5
- Address: 7868 Scottsville Road, Scottsville, VA 24590
- Phone: 434-286-2441
- Interim Principal: Art Stowe

Scottsville Elementary School is a place where students and staff work together to learn and grow, just like the trees and other wildlife surrounding our school. Following our motto, "Many Tigers, One Roar!" we work to ensure that everyone knows that they are an important part of the Tiger Team. We engage every student through their interests as we empower them to own their learning. We have developed relationships with the Town of Scottsville, B.F. Yancey Community Center, and several local churches to help in our shared mission of partnering with families to educate children.



Art Stow
Interim Principal
2022-Present



School Quality Profile

For the 2021-22 school year, Scottsville Elementary received a full accreditation status. For the full School Quality Profile, scan the QR code on the left or visit the [VDOE Scottsville Elementary School Quality Profile](#) web page.

Student Enrollment

Historical Fall Membership[^]

	2020-2021	2021-2022	2022-2023
Total Enrollment	221	216	225
Students with Disabilities	11.3%	13.9%	13.3%
English Learners	2.7%	3.2%	2.2%
Economically Disadvantaged	45.2%	45.8%	43.6%

Projections for FY 24 Budget

	Projected
Total Enrollment	225
K-5 Enrollment	207
Pre-School Enrollment	18
Economically Disadvantaged	47.0%



Facility Information

- Built in 1974
- 50,097 square feet
- 15.0-acre site

*Scottsville Elementary School is part of the **Southern Feeder Pattern**. Students continue to Walton Middle School and will graduate from Monticello High School*

[^] Excludes students who are served in placements outside of ACPS. Does not include MACAA Head Start preschool enrollment.
School Locations: D-34

SCOTTSVILLE ELEMENTARY SCHOOL

Home of the Tigers

Scottsville

Expense	19-20 Actuals	20-21 Actuals	21-22 Actuals	22-23 Adopted	23-24 Adopted	Increase	% Increase
Salary	\$1,694,147	\$1,514,752	\$1,772,029	\$1,971,332	\$2,099,496	\$128,164	6.5%
Other Wages	\$53,767	\$97,761	\$88,363	\$40,821	\$54,442	\$13,621	33.4%
Benefits	\$650,625	\$598,431	\$664,065	\$754,378	\$796,328	\$41,950	5.6%
Operations	\$51,431	\$69,686	\$74,033	\$47,504	\$53,567	\$6,063	12.8%
Total	\$2,449,970	\$2,280,630	\$2,598,491	\$2,814,035	\$3,003,833	\$189,798	6.7%

State Category Report	19-20 Actuals	20-21 Actuals	21-22 Actuals	22-23 Adopted	23-24 Adopted	Increase	% Increase
Instruction	\$2,242,097	\$2,054,925	\$2,351,097	\$2,557,804	\$2,734,942	\$177,138	6.9%
Admin/Attend&Health	\$54,082	\$54,903	\$64,927	\$64,239	\$69,701	\$5,462	8.5%
Technology	\$39,129	\$47,069	\$32,496	\$47,712	\$46,967	(\$745)	-1.6%
Building Services	\$114,662	\$123,732	\$149,971	\$144,280	\$152,223	\$7,943	5.5%
Total	\$2,449,970	\$2,280,630	\$2,598,491	\$2,814,035	\$3,003,833	\$189,798	6.7%

FTE Summary	22-23 FTE	23-24 FTE
Instruction	32.02	31.14
Assistant Principal	1.00	1.00
Clerical	2.00	2.00
Principal	1.00	1.00
Teacher^	20.23	19.40
Teaching Assistant	7.79	7.74
Admin/Attend&Health	1.00	1.00
Nurse	1.00	1.00
Technology	0.60	0.60
Other Technical	0.60	0.20
Teacher^		0.40
Building Services	2.75	2.75
Custodial	2.75	2.75
Total	36.37	35.49

Adjusted FTE^^	32.5	31.6
----------------	------	------

^Positions included within the Teacher category are detailed in Section G – Staffing Allocations.

^^ Teaching Assistants (TAs) are allocated at a 2 TA to 1 Teacher ratio. This adjusted number is the FTE allocation to the school.

STONE-ROBINSON ELEMENTARY SCHOOL

Home of the Eagles

Stone-Robinson Elementary

General School Information

- Grades Served: PK-5
- Address: 958 North Milton Road Charlottesville, VA 22911
- Phone: 434-296-3754
- Principal: Angela Stokes

At Stone-Robinson Elementary, we believe all students come to us with a natural curiosity and love for learning. We maintain high expectations and provide authentic learning experiences that nurture each child's social, emotional, and academic growth. At the heart of it all, we believe in building strong relationships with our students and community members that promote a positive school climate — one that is safe, kind, and inclusive for all learners.



Angela Stokes
Principal
2021-Present



School Quality Profile

For the 2021-22 school year, Stone-Robinson received a full accreditation status. For the full School Quality Profile, scan the QR code to the left or visit the [VDOE Stone-Robinson Elementary School Quality Profile](#) web page.

Student Enrollment

Historical Fall Membership[^]

	2020-2021	2021-2022	2022-2023
Total Enrollment	450	469	472
Students with Disabilities	13.6%	16.0%	14.2%
English Learners	6.4%	6.2%	5.3%
Economically Disadvantaged	28.0%	24.7%	32.0%

Projections for FY 24 Budget

Projected	
Total Enrollment	500
K-5 Enrollment	462
Pre-School Enrollment	38
Economically Disadvantaged	27.6%



Facility Information

- Built in 1961
- 71,100 square feet
- 11.3-acre site

*Stone-Robinson Elementary School is part of the **Southern Feeder Pattern**. Students continue to Burley or Walton Middle School and will graduate from Monticello High School.*

[^] Excludes students who are served in placements outside of ACPS. Does not include MACAA Head Start preschool enrollment.
School Locations: D-36

STONE-ROBINSON ELEMENTARY SCHOOL

Home of the Eagles

Stone-Robinson

Expense	19-20 Actuals	20-21 Actuals	21-22 Actuals	22-23 Adopted	23-24 Adopted	Increase	% Increase
Salary	\$3,117,588	\$3,206,977	\$3,442,607	\$3,858,602	\$3,939,552	\$80,950	2.1%
Other Wages	\$85,782	\$168,151	\$185,333	\$70,777	\$108,825	\$38,048	53.8%
Benefits	\$1,178,206	\$1,351,265	\$1,408,291	\$1,536,591	\$1,632,558	\$95,967	6.2%
Operations	\$48,643	\$59,037	\$67,976	\$88,034	\$92,126	\$4,092	4.6%
Total	\$4,430,218	\$4,785,431	\$5,104,206	\$5,554,004	\$5,773,061	\$219,057	3.9%

State Category Report	19-20 Actuals	20-21 Actuals	21-22 Actuals	22-23 Adopted	23-24 Adopted	Increase	% Increase
Instruction	\$4,162,526	\$4,508,809	\$4,827,821	\$5,227,518	\$5,405,371	\$177,853	3.4%
Admin/Attend&Health	\$46,551	\$52,595	\$47,786	\$40,948	\$58,583	\$17,635	43.1%
Technology	\$64,721	\$53,714	\$53,242	\$81,852	\$87,451	\$5,599	6.8%
Building Services	\$156,421	\$170,313	\$175,357	\$203,686	\$221,656	\$17,970	8.8%
Total	\$4,430,218	\$4,785,431	\$5,104,206	\$5,554,004	\$5,773,061	\$219,057	3.9%

FTE Summary	22-23 FTE	23-24 FTE
Instruction	67.66	66.92
Assistant Principal	1.00	1.00
Clerical	2.00	2.50
Principal	1.00	1.00
Teacher^	41.83	39.44
Teaching Assistant	21.83	22.98
Admin/Attend&Health	1.00	1.00
Nurse	1.00	1.00
Technology	1.00	1.00
Other Technical	0.50	0.40
Teacher^	0.50	0.60
Building Services	3.75	3.75
Custodial	3.75	3.75
Total	73.41	72.67

Adjusted FTE^^	62.5	61.2
----------------	------	------

^Positions included within the Teacher category are detailed in Section G – Staffing Allocations.

^^ Teaching Assistants (TAs) are allocated at a 2 TA to 1 Teacher ratio. This adjusted number is the FTE allocation to the school.

STONY POINT ELEMENTARY SCHOOL

Home of the Dragons

Stony Point Elementary

General School Information

- Grades Served: PK-5
- Address: 3893 Stony Point Road, Keswick, VA 22947
- Phone: 434-973-6405
- Principal: Maureen Jensen

Stony Point Elementary is a creative community of high-achieving learners who encourage each other to find and explore things about which they are passionate. It is our mission to foster an environment that allows our members to persevere, to overcome challenges, to be unafraid to fail or innovate, and to believe that there is no limit to what we can accomplish.



Maureen Jensen
Principal
2021-Present



School Quality Profile

For the 2021-22 school year, Stony Point received a full accreditation status. For the full School Quality Profile, scan the QR code to the left or visit the [VDOE Stony Point Elementary School Quality Profile](#) web page.

Student Enrollment

Historical Fall Membership[^]

	2020-2021	2021-2022	2022-2023
Total Enrollment	173	187	188
Students with Disabilities	8.1%	7.5%	9.6%
English Learners	4.0%	3.2%	2.1%
Economically Disadvantaged	31.8%	29.4%	27.7%

Projections for FY 24 Budget

Projected	
Total Enrollment	198
K-5 Enrollment	186
Pre-School Enrollment	12
Economically Disadvantaged	28.9%



Facility Information

- Built in 1934
- 38,500 square feet
- 11.6-acre site

*Stony Point Elementary School is part of both the **Northern and Southern feeder patterns**. Students continue to either Burley Middle School and then Monticello High School, or Lakeside Middle School followed by Albemarle High School.*

[^] Excludes students who are served in placements outside of ACPS. Does not include MACAA Head Start preschool enrollment.
School Locations: D-38

STONY POINT ELEMENTARY SCHOOL

Home of the Dragons

Stony Point

Expense	19-20 Actuals	20-21 Actuals	21-22 Actuals	22-23 Adopted	23-24 Adopted	Increase	% Increase
Salary	\$1,774,864	\$1,588,973	\$1,671,622	\$1,938,016	\$2,024,793	\$86,777	4.5%
Other Wages	\$49,412	\$64,261	\$89,633	\$38,166	\$51,496	\$13,330	34.9%
Benefits	\$694,248	\$667,606	\$682,400	\$792,372	\$841,387	\$49,015	6.2%
Operations	\$36,398	\$51,772	\$66,753	\$54,831	\$54,823	(\$8)	-0.0%
Total	\$2,554,922	\$2,372,613	\$2,510,408	\$2,823,385	\$2,972,499	\$149,114	5.3%

State Category Report	19-20 Actuals	20-21 Actuals	21-22 Actuals	22-23 Adopted	23-24 Adopted	Increase	% Increase
Instruction	\$2,289,401	\$2,107,411	\$2,237,984	\$2,527,640	\$2,656,815	\$129,175	5.1%
Admin/Attend&Health	\$54,768	\$57,779	\$61,166	\$67,993	\$64,036	(\$3,957)	-5.8%
Technology	\$53,498	\$49,708	\$41,901	\$55,398	\$58,705	\$3,307	6.0%
Building Services	\$157,256	\$157,714	\$169,357	\$172,354	\$192,943	\$20,589	11.9%
Total	\$2,554,922	\$2,372,613	\$2,510,408	\$2,823,385	\$2,972,499	\$149,114	5.3%

FTE Summary	22-23 FTE	23-24 FTE
Instruction	29.13	31.40
Assistant Principal	1.00	1.00
Clerical	2.00	2.00
Principal	1.00	1.00
Teacher^	19.85	18.23
Teaching Assistant	5.28	9.17
Admin/Attend&Health	1.00	1.00
Nurse	1.00	1.00
Technology	0.65	0.70
Other Technical	0.25	0.30
Teacher^	0.40	0.40
Building Services	3.00	3.00
Custodial	3.00	3.00
Total	33.78	36.10

Adjusted FTE^^	31.1	31.5
----------------	------	------

^Positions included within the Teacher category are detailed in Section G – Staffing Allocations.

^^ Teaching Assistants (TAs) are allocated at a 2 TA to 1 Teacher ratio. This adjusted number is the FTE allocation to the school.

WOODBROOK ELEMENTARY SCHOOL

Home of the Bears

Woodbrook Elementary

General School Information

- Grades Served: PK-5
- Address: 100 Woodbrook Drive, Charlottesville, VA 22901
- Phone: 434-973-6600
- Principal: Kristen Williams

Woodbrook is a neighborhood school that thrives on community partnerships to support each child with academic and social and emotional growth. We serve approximately 600 students who all live within a four-mile radius of the school. Our families speak 18 different languages and bring a unique cultural perspective to the home/school partnership. We are proud of the diversity in our school and celebrate all that we can learn from and with each other. We are committed to providing the best educational experience possible for our students.



Kristen Williams
Principal
2019-Present



School Quality Profile

For the 2021-22 school year, Woodbrook received a status of accreditation with conditions. For the full School Quality Profile, scan the QR code to the left or visit the [VDOE Woodbrook Elementary School Quality Profile](#) web page.

Student Enrollment

Historical Fall Membership[^]

	2020-2021	2021-2022	2022-2023
Total Enrollment	568	558	605
Students with Disabilities	11.1%	11.5%	10.6%
English Learners	24.5%	23.5%	24.1%
Economically Disadvantaged	57.2%	53.9%	57.7%

Projections for FY 24 Budget

Projected	
Total Enrollment	619
K-5 Enrollment	575
Pre-School Enrollment	44
Economically Disadvantaged	67.7%



Facility Information

- Built in 1966
- 82,966 square feet
- 12.0-acre site

*Woodbrook Elementary School is part of the **Northern Feeder Pattern**. Students continue to Journey Middle School and will graduate from Albemarle High School.*

[^] Excludes students who are served in placements outside of ACPS. Does not include MACAA Head Start preschool enrollment.
School Locations: D-40

WOODBROOK ELEMENTARY SCHOOL

Home of the Bears

Woodbrook

Expense	19-20 Actuals	20-21 Actuals	21-22 Actuals	22-23 Adopted	23-24 Adopted	Increase	% Increase
Salary	\$3,576,650	\$3,542,614	\$4,141,601	\$4,878,387	\$5,535,937	\$657,550	13.5%
Other Wages	\$119,760	\$162,354	\$275,126	\$76,984	\$147,395	\$70,411	91.5%
Benefits	\$1,317,059	\$1,466,070	\$1,636,103	\$1,913,033	\$2,202,794	\$289,761	15.1%
Operations	\$73,706	\$84,517	\$90,664	\$127,203	\$113,973	(\$13,230)	-10.4%
Total	\$5,087,174	\$5,255,555	\$6,143,495	\$6,995,607	\$8,000,099	\$1,004,492	14.4%

State Category Report	19-20 Actuals	20-21 Actuals	21-22 Actuals	22-23 Adopted	23-24 Adopted	Increase	% Increase
Instruction	\$4,810,923	\$4,960,902	\$5,791,801	\$6,587,040	\$7,581,701	\$994,661	15.1%
Admin/Attend&Health	\$46,349	\$48,149	\$61,523	\$54,436	\$58,725	\$4,289	7.9%
Technology	\$71,515	\$52,142	\$46,561	\$75,199	\$79,528	\$4,329	5.8%
Building Services	\$158,387	\$194,362	\$243,611	\$278,932	\$280,145	\$1,213	0.4%
Total	\$5,087,174	\$5,255,555	\$6,143,495	\$6,995,607	\$8,000,099	\$1,004,492	14.4%

FTE Summary	22-23 FTE	23-24 FTE
Instruction	83.12	89.21
Assistant Principal	1.00	1.00
Clerical	2.50	3.00
Principal	1.00	1.00
Teacher^	58.07	60.49
Teaching Assistant	20.55	23.72
Admin/Attend&Health	1.00	1.00
Nurse	1.00	1.00
Technology	0.85	0.90
Other Technical	0.35	0.40
Teacher^	0.50	0.50
Building Services	4.63	4.63
Custodial	4.63	4.63
Total	89.60	95.74

Adjusted FTE^^	79.3	83.9
----------------	------	------

^Positions included within the Teacher category are detailed in Section G – Staffing Allocations.

^^ Teaching Assistants (TAs) are allocated at a 2 TA to 1 Teacher ratio. This adjusted number is the FTE allocation to the school.

BURLEY MIDDLE SCHOOL

Home of the Bears

Burley Middle School

General School Information

- Grades Served: 6-8
- Address: 901 Rose Hill Drive, Charlottesville, VA 22903
- Phone: 434-295-5101
- Principal: Kasaundra Blount

Jackson P. Burley Middle School, continuing to build on its historic legacy of integrity and achievement, seeks to cultivate educational partnerships that engage students, staff, families and the community in the pursuit of positive, academic outcomes for all students. Burley Middle School's core values – Character, Scholarship, Service – remain the driving force behind all that we do and keeps us connected to the historic legacy of Burley High School.



Kasaundra Blount
Principal
2020-Present



School Quality Profile

For the 2021-22 school year, Burley received a full accreditation status. For the full school quality profile, scan the QR code to the left or visit the [VDOE Burley Middle School Quality Profile](#) web page.

Student Enrollment

Historical Fall Membership

	2020-2021	2021-2022	2022-2023
Total Enrollment	607	598	588
Students with Disabilities	16.1%	14.2%	13.8%
English Learners	17.1%	18.7%	19.0%
Economically Disadvantaged	44.6%	38.8%	45.4%

Projections for FY 24 Budget

Projected	
Total Enrollment	553
Economically Disadvantaged	43.7%



Facility Information

- Built in 1951
- 123,626 square feet
- 15.3-acre site

*Burley Middle School is part of both the **Northern and Southern feeder patterns**. Students previously attended Agnor-Hurt, Mountain View, Stone-Robinson, or Stony Point Elementary School, and will graduate from either Albemarle or Monticello High School.*

BURLEY MIDDLE SCHOOL

Home of the Bears

Burley

Expense	19-20 Actuals	20-21 Actuals	21-22 Actuals	22-23 Adopted	23-24 Adopted	Increase	% Increase
Salary	\$3,691,766	\$4,176,321	\$4,519,060	\$4,787,242	\$4,679,109	(\$108,133)	-2.3%
Other Wages	\$50,492	\$114,318	\$182,432	\$106,805	\$130,396	\$23,591	22.1%
Benefits	\$1,457,256	\$1,751,604	\$1,776,240	\$1,918,280	\$1,870,828	(\$47,452)	-2.5%
Operations	\$83,790	\$130,203	\$117,845	\$156,184	\$163,958	\$7,774	5.0%
Total	\$5,283,305	\$6,172,446	\$6,595,577	\$6,968,511	\$6,844,291	(\$124,220)	-1.8%

State Category Report	19-20 Actuals	20-21 Actuals	21-22 Actuals	22-23 Adopted	23-24 Adopted	Increase	% Increase
Instruction	\$4,905,201	\$5,801,314	\$6,146,928	\$6,533,262	\$6,310,919	(\$222,343)	-3.4%
Admin/Attend&Health	\$57,970	\$59,045	\$76,469	\$67,729	\$114,140	\$46,411	68.5%
Technology	\$107,171	\$105,301	\$72,603	\$98,048	\$131,239	\$33,191	33.9%
Building Services	\$212,962	\$206,787	\$299,577	\$269,472	\$287,993	\$18,521	6.9%
Total	\$5,283,305	\$6,172,446	\$6,595,577	\$6,968,511	\$6,844,291	(\$124,220)	-1.8%

FTE Summary	22-23 FTE	23-24 FTE
Instruction	73.84	68.48
Assistant Principal	1.00	1.00
Clerical	3.00	3.00
Principal	1.00	1.00
Teacher^	56.34	52.48
Teaching Assistant	12.50	11.00
Admin/Attend&Health	1.00	2.00
Nurse	1.00	1.00
Teaching Assistant		1.00
Technology	1.20	1.40
Other Technical	0.80	0.90
Teacher^	0.40	0.50
Building Services	5.00	5.00
Custodial	5.00	5.00
Total	81.04	76.88

Adjusted FTE^^	74.8	70.9
----------------	------	------

^Positions included within the Teacher category are detailed in Section G – Staffing Allocations.

^^ Teaching Assistants (TAs) are allocated at a 2 TA to 1 Teacher ratio. This adjusted number is the FTE allocation to the school.

HENLEY MIDDLE SCHOOL

Home of the Hornets

Henley Middle School

General School Information

- Grades Served: 6-8
- Address: 5880 Rockfish Gap Turnpike, Crozet, VA 22932
- Phone: 434-823-4393
- Principal: LaRuth Ensley

Henley's North Star, Equity for Deeper Learning through Culturally Responsive and Anti-racist Teaching, guides our social, emotional, and academic work with our students and staff. We are deeply committed to ACPS's strategic plan, and we continue to evaluate our curriculum, assessment, and instruction through these lenses and seek to equip all students with the broad range of skills and competencies that will prepare them for high school, college and a successful and rewarding life.



LaRuth Ensley
Principal
2022-Present



School Quality Profile

For the 2021-22 school year, Henley received a full accreditation status. For the full School Quality Profile, scan the QR code to the left or visit the [VDOE Henley Middle School Quality Profile](#) web page.

Student Enrollment

Historical Fall Membership

	2020-2021	2021-2022	2022-2023
Total Enrollment	877	839	808
Students with Disabilities	9.8%	10.3%	12.6%
English Learners	1.8%	2.1%	2.1%
Economically Disadvantaged	17.1%	13.9%	13.4%

Projections for FY 24 Budget

Projected	
Total Enrollment	809
Economically Disadvantaged	14.4%



Facility Information

- Built in 1966
- 120,419 square feet
- 30.0-acre site

*Henley Middle School is part of the **Western Feeder Pattern**. Students previously attended Brownsville, Crozet, Ivy, or Murray Elementary School, and will graduate from Western Albemarle High School.*

HENLEY MIDDLE SCHOOL

Home of the Hornets

Henley

Expense	19-20 Actuals	20-21 Actuals	21-22 Actuals	22-23 Adopted	23-24 Adopted	Increase	% Increase
Salary	\$4,809,208	\$4,794,950	\$5,357,002	\$5,368,527	\$5,624,486	\$255,959	4.8%
Other Wages	\$142,091	\$253,921	\$341,138	\$134,685	\$174,481	\$39,796	29.5%
Benefits	\$1,838,328	\$1,942,697	\$2,068,463	\$2,072,161	\$2,256,916	\$184,755	8.9%
Operations	\$144,718	\$163,435	\$126,934	\$181,197	\$188,352	\$7,155	3.9%
Total	\$6,934,345	\$7,155,003	\$7,893,537	\$7,756,570	\$8,244,235	\$487,665	6.3%

State Category Report	19-20 Actuals	20-21 Actuals	21-22 Actuals	22-23 Adopted	23-24 Adopted	Increase	% Increase
Instruction	\$6,524,640	\$6,773,869	\$7,375,003	\$7,170,844	\$7,579,805	\$408,961	5.7%
Admin/Attend&Health	\$50,985	\$49,454	\$64,796	\$57,033	\$142,434	\$85,401	149.7%
Technology	\$165,383	\$116,943	\$124,119	\$200,107	\$156,399	(\$43,708)	-21.8%
Building Services	\$193,336	\$214,737	\$329,619	\$328,586	\$365,597	\$37,011	11.3%
Total	\$6,934,345	\$7,155,003	\$7,893,537	\$7,756,570	\$8,244,235	\$487,665	6.3%

FTE Summary	22-23 FTE	23-24 FTE
Instruction	82.51	83.70
Assistant Principal	2.00	2.00
Clerical	4.50	3.50
Principal	1.00	1.00
Teacher^	62.01	62.20
Teaching Assistant	13.00	15.00
Admin/Attend&Health	1.00	3.00
Nurse	1.00	1.00
Teaching Assistant		2.00
Technology	2.00	1.50
Other Technical	1.00	0.50
Teacher^	1.00	1.00
Building Services	6.00	6.50
Custodial	6.00	6.50
Total	91.51	94.70

Adjusted FTE^^	85.0	86.2
----------------	------	------

^Positions included within the Teacher category are detailed in Section G – Staffing Allocations.

^^ Teaching Assistants (TAs) are allocated at a 2 TA to 1 Teacher ratio. This adjusted number is the FTE allocation to the school.

JOURNEY MIDDLE SCHOOL

Home of the Jaguars

Journey Middle School

General School Information

- Grades Served: 6-8
- Address: 210 Lambs Lane, Charlottesville, VA 22901
- Phone: 434-975-9320
- Principal: Ashby Johnson

Journey Middle School serves students in the urban ring and Earlysville area of Albemarle County. Our diverse students and families speak 27 different languages and make Journey a special place to be. We maintain a strong focus on college and career readiness, as evidenced by our Advancement Via Individual Determination (AVID) program. We are an AVID National Demonstration School, which indicates that we are among the top 3% of schools in the world that implement AVID to fidelity. Our core values at Journey are growth, compassion, healthy risk-taking, connection, and equity.



Ashby Johnson
Principal
2019-Present



School Quality Profile

For the 2021-22 school year, Journey received a full accreditation status. For the full School Quality Profile, scan the QR code to the left or visit the [VDOE Journey Middle School Quality Profile](#) web page.

Student Enrollment

Historical Fall Membership

	2020-2021	2021-2022	2022-2023
Total Enrollment	681	694	634
Students with Disabilities	12.8%	15.9%	14.4%
English Learners	25.4%	22.3%	26.2%
Economically Disadvantaged	58.0%	44.7%	51.7%

Projections for FY 24 Budget

Projected	
Total Enrollment	638
Economically Disadvantaged	52.2%



Facility Information

- Built in 1966
- 94,929 square feet
- 20.0-acre site

*Journey Middle School is part of the **Northern Feeder Pattern**. Students previously attended Agnor-Hurt, Greer, Broadus Wood, or Woodbrook Elementary School, and will graduate from Albemarle High School.*

JOURNEY MIDDLE SCHOOL

Home of the Jaguars

Journey

Expense	19-20 Actuals	20-21 Actuals	21-22 Actuals	22-23 Adopted	23-24 Adopted	Increase	% Increase
Salary	\$4,095,369	\$4,410,161	\$5,010,736	\$5,317,755	\$5,428,967	\$111,212	2.1%
Other Wages	\$78,307	\$172,824	\$249,810	\$113,982	\$157,855	\$43,873	38.5%
Benefits	\$1,512,746	\$1,717,016	\$1,885,847	\$2,088,829	\$2,175,163	\$86,334	4.1%
Operations	\$90,350	\$79,651	\$165,787	\$172,623	\$171,948	(\$675)	-0.4%
Total	\$5,776,771	\$6,379,652	\$7,312,181	\$7,693,189	\$7,933,933	\$240,744	3.1%

State Category Report	19-20 Actuals	20-21 Actuals	21-22 Actuals	22-23 Adopted	23-24 Adopted	Increase	% Increase
Instruction	\$5,449,215	\$6,040,366	\$6,794,098	\$7,238,486	\$7,436,537	\$198,051	2.7%
Admin/Attend&Health	\$48,576	\$48,596	\$70,726	\$57,902	\$102,858	\$44,956	77.6%
Technology	\$88,377	\$108,178	\$164,772	\$112,143	\$94,279	(\$17,864)	-15.9%
Building Services	\$190,603	\$182,513	\$282,585	\$284,658	\$300,259	\$15,601	5.5%
Total	\$5,776,771	\$6,379,652	\$7,312,181	\$7,693,189	\$7,933,933	\$240,744	3.1%

FTE Summary	22-23 FTE	23-24 FTE
Instruction	86.14	80.05
Assistant Principal	1.00	1.00
Clerical	4.00	3.50
Principal	1.00	1.00
Teacher^	66.14	64.05
Teaching Assistant	14.00	10.50
Admin/Attend&Health	1.00	2.00
Nurse	1.00	1.00
Teaching Assistant		1.00
Technology	1.20	1.10
Other Technical	0.80	0.50
Teacher^	0.40	0.60
Building Services	5.00	5.00
Custodial	5.00	5.00
Total	93.34	88.15

Adjusted FTE^^	86.3	82.4
----------------	------	------

^Positions included within the Teacher category are detailed in Section G – Staffing Allocations.

^^ Teaching Assistants (TAs) are allocated at a 2 TA to 1 Teacher ratio. This adjusted number is the FTE allocation to the school.

LAKESIDE MIDDLE SCHOOL

Home of the Sharks

Lakeside Middle School

General School Information

- Grades Served: 6-8
- Address: 2801 Powell Creek Drive, Charlottesville, VA 22911
- Phone: 434-975-0599
- Principal: Michael Craddock

Lakeside Middle School serves nearly 600 students in grades 6 through 8 and includes more than 70 faculty and staff. We are committed to providing our students with high-quality learning experiences that are relevant and meaningful. We firmly believe that supporting students' social and emotional well-being is an integral part of the middle school experience.



Michael Craddock
Principal
2022-Present



School Quality Profile

For the 2021-22 school year, Lakeside received a full accreditation status. For the full School Quality Profile, scan the QR code to the left or visit the [VDOE Lakeside Middle School Quality Profile](#) web page.

Student Enrollment

Historical Fall Membership

	2020-2021	2021-2022	2022-2023
Total Enrollment	579	545	513
Students with Disabilities	10.7%	9.4%	12.3%
English Learners	6.9%	8.6%	10.5%
Economically Disadvantaged	21.2%	19.3%	23.8%

Projections for FY 24 Budget

Projected	
Total Enrollment	527
Economically Disadvantaged	22.1%



Facility Information

- Built in 1994
- 94,440 square feet
- 21.0-acre site

*Lakeside Middle School is part of the **Northern Feeder Pattern**. Students previously attended Baker-Butler, Hollymead, or Stony-Point Elementary School, and will graduate from Albemarle High School.*

LAKESIDE MIDDLE SCHOOL

Home of the Sharks

Lakeside

Expense	19-20 Actuals	20-21 Actuals	21-22 Actuals	22-23 Adopted	23-24 Adopted	Increase	% Increase
Salary	\$3,548,913	\$3,426,209	\$3,779,970	\$3,926,056	\$4,117,948	\$191,892	4.9%
Other Wages	\$101,658	\$119,205	\$203,966	\$107,476	\$119,087	\$11,611	10.8%
Benefits	\$1,377,584	\$1,394,189	\$1,476,449	\$1,587,911	\$1,645,510	\$57,599	3.6%
Operations	\$90,948	\$117,023	\$128,143	\$125,356	\$137,488	\$12,132	9.7%
Total	\$5,119,104	\$5,056,625	\$5,588,529	\$5,746,799	\$6,020,033	\$273,234	4.8%

State Category Report	19-20 Actuals	20-21 Actuals	21-22 Actuals	22-23 Adopted	23-24 Adopted	Increase	% Increase
Instruction	\$4,824,589	\$4,741,941	\$5,260,564	\$5,336,571	\$5,561,647	\$225,076	4.2%
Admin/Attend&Health	\$39,186	\$40,698	\$60,453	\$55,441	\$100,768	\$45,327	81.8%
Technology	\$13,888	\$77,908	\$71,281	\$103,328	\$103,410	\$82	0.1%
Building Services	\$241,442	\$196,079	\$196,231	\$251,459	\$254,208	\$2,749	1.1%
Total	\$5,119,104	\$5,056,625	\$5,588,529	\$5,746,799	\$6,020,033	\$273,234	4.8%

FTE Summary	22-23 FTE	23-24 FTE
Instruction	58.34	61.02
Assistant Principal	1.00	1.00
Clerical	3.00	3.00
Principal	1.00	1.00
Teacher^	45.34	45.02
Teaching Assistant	8.00	11.00
Admin/Attend&Health	1.00	2.00
Nurse	1.00	1.00
Teaching Assistant		1.00
Technology	1.30	1.10
Other Technical	0.60	0.60
Teacher^	0.70	0.50
Building Services	4.50	4.50
Custodial	4.50	4.50
Total	65.14	68.62

Adjusted FTE^^	61.1	62.6
----------------	------	------

^Positions included within the Teacher category are detailed in Section G – Staffing Allocations.

^^ Teaching Assistants (TAs) are allocated at a 2 TA to 1 Teacher ratio. This adjusted number is the FTE allocation to the school.

WALTON MIDDLE SCHOOL

Home of the Wildcats

Walton Middle School

General School Information

- Grades Served: 6-8
- Address: 4217 Red Hill Road, Charlottesville, VA 22903
- Phone: 434-977-5615
- Principal: Josh Walton

Walton Middle School serves students and families in the Southern Feeder Pattern of Albemarle County by establishing a community of learners and learning built on relationships, relevance, and rigor. At Walton, our work is centered around three Guiding Principles, which include fostering a community of safe, responsible and respectful learners that help each other grow academically, emotionally and socially; being welcoming, inclusive and student-centered to ensure that the doors of opportunity are open for all students; and working as a team to foster health risk-taking, pursuit of passions and a mindset of continuous improvement.



Josh Walton
Principal
2016-Present



School Quality Profile

For the 2021-22 school year, Walton received a full accreditation status. For the full School Quality Profile, scan the QR code to the left or visit the [VDOE Walton Middle School Quality Profile](#) web page.

Student Enrollment

Historical Fall Membership

	2020-2021	2021-2022	2022-2023
Total Enrollment	345	329	340
Students with Disabilities	20.9%	17.9%	18.5%
English Learners	3.8%	4.3%	5.9%
Economically Disadvantaged	41.2%	31.9%	37.9%

Projections for FY 24 Budget

Projected

Total Enrollment	328
Economically Disadvantaged	38.7%



Facility Information

- Built in 1974
- 98,340 square feet
- 50.0-acre site

*Walton Middle School is part of the **Southern Feeder Pattern**. Students previously attended Mountain View, Red Hill, Scottsville, or Stone-Robinson Elementary School, and will graduate from Monticello High School.*

WALTON MIDDLE SCHOOL

Home of the Wildcats

Walton

Expense	19-20 Actuals	20-21 Actuals	21-22 Actuals	22-23 Adopted	23-24 Adopted	Increase	% Increase
Salary	\$2,861,351	\$2,960,427	\$3,308,471	\$3,615,300	\$3,726,195	\$110,895	3.1%
Other Wages	\$52,836	\$93,094	\$105,298	\$90,800	\$121,865	\$31,065	34.2%
Benefits	\$1,160,586	\$1,224,836	\$1,298,126	\$1,485,861	\$1,477,720	(\$8,141)	-0.5%
Operations	\$79,863	\$89,202	\$118,589	\$98,857	\$100,824	\$1,967	2.0%
Total	\$4,154,636	\$4,367,559	\$4,830,484	\$5,290,818	\$5,426,604	\$135,786	2.6%

State Category Report	19-20 Actuals	20-21 Actuals	21-22 Actuals	22-23 Adopted	23-24 Adopted	Increase	% Increase
Instruction	\$3,834,840	\$4,060,639	\$4,522,872	\$4,971,660	\$5,001,658	\$29,998	0.6%
Admin/Attend&Health	\$46,087	\$49,707	\$56,918	\$54,203	\$100,407	\$46,204	85.2%
Technology	\$75,313	\$80,086	\$39,118	\$34,921	\$81,866	\$46,945	134.4%
Building Services	\$198,396	\$177,127	\$211,576	\$230,034	\$242,673	\$12,639	5.5%
Total	\$4,154,636	\$4,367,559	\$4,830,484	\$5,290,818	\$5,426,604	\$135,786	2.6%

FTE Summary	22-23 FTE	23-24 FTE
Instruction	57.03	54.40
Assistant Principal	1.00	1.00
Clerical	3.00	3.00
Principal	1.00	1.00
Teacher^	41.31	39.40
Teaching Assistant	10.72	10.00
Admin/Attend&Health	1.00	2.00
Nurse	1.00	1.00
Teaching Assistant		1.00
Technology	0.40	1.00
Other Technical	0.20	0.60
Teacher^	0.20	0.40
Building Services	4.00	4.00
Custodial	4.00	4.00
Total	62.43	61.40

Adjusted FTE^^	57.1	55.9
----------------	------	------

^Positions included within the Teacher category are detailed in Section G – Staffing Allocations.

^^ Teaching Assistants (TAs) are allocated at a 2 TA to 1 Teacher ratio. This adjusted number is the FTE allocation to the school.

ALBEMARLE HIGH SCHOOL

Home of the Patriots

Albemarle High School

General School Information

- Grades Served: 9-12
- Address: 2775 Hydraulic Road, Charlottesville, VA 22901
- Phone: 434-975-9300
- Principal: Darah Bonham

The oldest and largest high school in the division, Albemarle High School serves a diverse cadre of students by providing a quality education with enriching experiences for our students. We strive every day to build trust, ignite enthusiasm, and to partner with our students, family, and community to ensure the best experience for our students and further the goals for our division. By continuing our own lifelong learning, the staff of Albemarle seeks to be open and responsive to all walks of life that make their way through the halls to facilitate a welcoming and inclusive learning environment.



Darah Bonham
Principal
2019-Present



School Quality Profile

For the 2021-22 school year, Albemarle High received a full accreditation status. For the full School Quality Profile, scan the QR code to the left or visit the [VDOE Albemarle High School Quality Profile](#) web page.

Student Enrollment

Historical Fall Membership

	2020-2021	2021-2022	2022-2023
Total Enrollment	1887	1911	1993
Students with Disabilities	12.5%	11.7%	10.5%
English Learners	10.4%	11.2%	13.3%
Economically Disadvantaged	34.3%	27.4%	33.2%

Projections for FY 24 Budget

Projected	
Total Enrollment	1958
Economically Disadvantaged	33.1%



Facility Information

- Built in 1953
- 350,103 square feet
- 40.0-acre site

Albemarle High School is the culminating experience of all Northern Feeder Pattern middle and elementary schools.

Career Learning Communities

- Business, Innovation & Entrepreneurship
- Education & Human Development
- Math, Engineering & Sciences

ALBEMARLE HIGH SCHOOL

Home of the Patriots

Albemarle

Expense	19-20 Actuals	20-21 Actuals	21-22 Actuals	22-23 Adopted	23-24 Adopted	Increase	% Increase
Salary	\$11,789,491	\$10,976,300	\$11,784,944	\$13,733,430	\$14,668,887	\$935,457	6.8%
Other Wages	\$625,789	\$667,091	\$1,035,194	\$696,449	\$829,172	\$132,723	19.1%
Benefits	\$4,571,345	\$4,421,471	\$4,575,055	\$5,312,506	\$5,809,691	\$497,185	9.4%
Operations	\$547,444	\$475,172	\$633,538	\$705,506	\$739,077	\$33,571	4.8%
Total	\$17,534,069	\$16,540,034	\$18,028,732	\$20,447,891	\$22,046,827	\$1,598,936	7.8%

State Category Report	19-20 Actuals	20-21 Actuals	21-22 Actuals	22-23 Adopted	23-24 Adopted	Increase	% Increase
Instruction	\$16,537,992	\$15,617,850	\$16,943,483	\$19,132,647	\$20,662,377	\$1,529,730	8.0%
Admin/Attend&Health	\$62,482	\$68,003	\$86,862	\$137,459	\$246,760	\$109,301	79.5%
Technology	\$263,297	\$210,131	\$235,521	\$322,174	\$304,459	(\$17,715)	-5.5%
Building Services	\$670,298	\$644,050	\$762,866	\$855,611	\$833,231	(\$22,380)	-2.6%
Total	\$17,534,069	\$16,540,034	\$18,028,732	\$20,447,891	\$22,046,827	\$1,598,936	7.8%

FTE Summary	22-23 FTE	23-24 FTE
Instruction	206.00	207.62
Assistant Principal	4.00	5.00
Clerical	12.00	11.00
Other Management	2.00	2.00
Other Professional	1.00	1.34
Principal	1.00	1.00
Social Worker	1.00	
Teacher^	157.79	167.28
Teaching Assistant	27.21	20.00
Admin/Attend&Health	2.00	5.00
Nurse	1.91	2.00
Other Management	0.09	
Teaching Assistant		3.00
Technology	3.90	3.00
Other Technical	2.90	2.00
Teacher^	1.00	1.00
Building Services	15.00	14.50
Custodial	15.00	14.50
Total	226.90	230.12

Adjusted FTE^^	213.3	218.6
----------------	-------	-------

^Positions included within the Teacher category are detailed in Section G – Staffing Allocations.

^^ Teaching Assistants (TAs) are allocated at a 2 TA to 1 Teacher ratio. This adjusted number is the FTE allocation to the school.

MONTICELLO HIGH SCHOOL

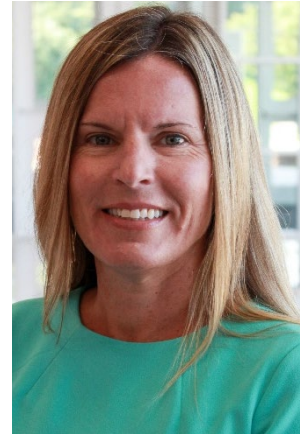
Home of the Mustangs

Monticello High School

General School Information

- Grades Served: 9-12
- Address: 1400 Independence Way, Charlottesville, VA 22902
- Phone: 434-244-3100
- Principal: Beth Costa

Monticello has always had and continues to have a proud tradition of academics, fine arts, athletics and extracurricular events. Our core purpose is to establish a community of learners and learning through relationships, relevance and rigor one student at a time.



Beth Costa
Principal
2022-Present



School Quality Profile

For the 2021-22 school year, Monticello received a full accreditation status. For the full School Quality Profile, scan the QR code to the left or visit the [VDOE Monticello High School Quality Profile](#) web page.

Student Enrollment

Historical Fall Membership

	2020-2021	2021-2022	2022-2023
Total Enrollment	1186	1213	1231
Students with Disabilities	14.3%	14.1%	14.5%
English Learners	6.3%	6.0%	7.0%
Economically Disadvantaged	34.8%	31.2%	35.8%

Projections for FY 24 Budget

Projected	
Total Enrollment	1150
Economically Disadvantaged	35.1%



Facility Information

- Built in 1998
- 249,195 square feet
- 70.0-acre site

*Monticello High School is the culminating experience of all **Southern Feeder Pattern** middle and elementary schools.*

Career Learning Communities

- Geospatial Technologies, Logistics, Robotics & Transportation
- Global Leadership, Law & Social Justice
- Health & Medical Sciences
- Visual Arts

MONTICELLO HIGH SCHOOL

Home of the Mustangs

Monticello

Expense	19-20 Actuals	20-21 Actuals	21-22 Actuals	22-23 Adopted	23-24 Adopted	Increase	% Increase
Salary	\$7,421,908	\$7,334,719	\$7,944,597	\$9,283,342	\$9,412,756	\$129,414	1.4%
Other Wages	\$544,044	\$541,170	\$758,292	\$562,360	\$686,340	\$123,980	22.0%
Benefits	\$2,851,001	\$2,935,337	\$3,163,691	\$3,782,202	\$3,722,680	(\$59,522)	-1.6%
Operations	\$503,893	\$422,676	\$563,303	\$561,531	\$487,606	(\$73,925)	-13.2%
Total	\$11,320,846	\$11,233,902	\$12,429,882	\$14,189,435	\$14,309,382	\$119,947	0.8%

State Category Report	19-20 Actuals	20-21 Actuals	21-22 Actuals	22-23 Adopted	23-24 Adopted	Increase	% Increase
Instruction	\$10,490,777	\$10,521,935	\$11,698,637	\$13,305,647	\$13,317,668	\$12,021	0.1%
Admin/Attend&Health	\$59,666	\$61,228	\$81,509	\$72,047	\$154,714	\$82,667	114.7%
Technology	\$171,540	\$169,793	\$92,601	\$186,889	\$205,309	\$18,420	9.9%
Building Services	\$598,863	\$480,946	\$557,135	\$624,852	\$631,691	\$6,839	1.1%
Total	\$11,320,846	\$11,233,902	\$12,429,882	\$14,189,435	\$14,309,382	\$119,947	0.8%

FTE Summary	22-23 FTE	23-24 FTE
Instruction	137.86	135.06
Assistant Principal	3.00	3.00
Clerical	10.00	9.00
Other Management	2.00	2.00
Other Professional	1.00	1.33
Principal	1.00	1.00
Teacher^	107.86	103.73
Teaching Assistant	13.00	15.00
Admin/Attend&Health	1.00	3.00
Nurse	1.00	1.00
Teaching Assistant		2.00
Technology	2.00	2.00
Other Technical	1.00	1.00
Teacher^	1.00	1.00
Building Services	11.00	11.00
Custodial	11.00	11.00
Total	151.86	151.06

Adjusted FTE^^	145.4	142.6
----------------	-------	-------

^Positions included within the Teacher category are detailed in Section G – Staffing Allocations.

^^ Teaching Assistants (TAs) are allocated at a 2 TA to 1 Teacher ratio. This adjusted number is the FTE allocation to the school.

WESTERN ALBEMARLE HIGH SCHOOL

Home of the Warriors

Western Albemarle High School

General School Information

- Grades Served: 9-12
- Address: 5941 Rockfish Gap Turnpike, Crozet, VA 22932
- Phone: 434-823-8700
- Principal: Jennifer Sublette

Western Albemarle High School enjoys a tradition of student success in academics, athletics, and the arts that is a result of a culture of high expectations, supported by the establishment of strong relationships with students and families. Our school community works together to strengthen learning partnerships and expand our support of both academic and social-emotional learning.



Jennifer Sublette
Principal
2021-Present



School Quality Profile

For the 2021-22 school year, Western Albemarle received a full accreditation status. For the full School Quality Profile, scan the QR code to the left or visit the [VDOE Western Albemarle High School Quality Profile](#) web page.

Student Enrollment

Historical Fall Membership

	2020-2021	2021-2022	2022-2023
Total Enrollment	1144	1152	1159
Students with Disabilities	11.5%	11.5%	11.1%
English Learners	1.0%	0.9%	0.9%
Economically Disadvantaged	12.3%	11.5%	12.9%

Projections for FY 24 Budget

Projected	
Total Enrollment	1116
Economically Disadvantaged	12.7%



Facility Information

- Built in 1977
- 204,041 square feet
- 75.0-acre site

*Western Albemarle is the culminating experience of all **Western Feeder Pattern** middle and elementary schools.*

Career Learning Communities

- Hospitality, Eateries, Amusement, Recreation and Tourism
- Environmental Studies
- Architecture, Design & Urban Planning

WESTERN ALBEMARLE HIGH SCHOOL

Home of the Warriors

Western Albemarle

Expense	19-20 Actuals	20-21 Actuals	21-22 Actuals	22-23 Adopted	23-24 Adopted	Increase	% Increase
Salary	\$7,131,282	\$6,740,148	\$7,501,013	\$8,321,440	\$8,382,737	\$61,297	0.7%
Other Wages	\$497,241	\$467,420	\$701,658	\$558,200	\$634,393	\$76,193	13.6%
Benefits	\$2,724,678	\$2,634,582	\$2,873,794	\$3,245,372	\$3,341,563	\$96,191	3.0%
Operations	\$492,180	\$441,437	\$465,438	\$589,278	\$627,656	\$38,378	6.5%
Total	\$10,845,381	\$10,283,586	\$11,541,903	\$12,714,290	\$12,986,349	\$272,059	2.1%

State Category Report	19-20 Actuals	20-21 Actuals	21-22 Actuals	22-23 Adopted	23-24 Adopted	Increase	% Increase
Instruction	\$10,146,917	\$9,614,865	\$10,754,271	\$11,863,289	\$12,100,182	\$236,893	2.0%
Admin/Attend&Health	\$102,142	\$78,423	\$80,838	\$77,477	\$140,947	\$63,470	81.9%
Technology	\$158,996	\$153,312	\$151,295	\$162,716	\$194,844	\$32,128	19.7%
Building Services	\$437,326	\$436,986	\$555,499	\$610,808	\$550,376	(\$60,432)	-9.9%
Total	\$10,845,381	\$10,283,586	\$11,541,903	\$12,714,290	\$12,986,349	\$272,059	2.1%

FTE Summary	22-23 FTE	23-24 FTE
Instruction	121.62	121.92
Assistant Principal	3.00	3.00
Clerical	10.00	9.00
Other Management	2.00	3.00
Other Professional	1.00	0.33
Principal	1.00	1.00
Teacher^	91.82	88.59
Teaching Assistant	12.80	17.00
Admin/Attend&Health	1.00	3.00
Nurse	0.91	1.00
Other Management	0.09	
Teaching Assistant		2.00
Technology	1.70	2.00
Other Technical	1.00	1.00
Teacher^	0.70	1.00
Building Services	11.00	9.60
Custodial	11.00	9.60
Total	135.32	136.52

Adjusted FTE^^	128.9	127.0
----------------	-------	-------

^Positions included within the Teacher category are detailed in Section G – Staffing Allocations.

^^ Teaching Assistants (TAs) are allocated at a 2 TA to 1 Teacher ratio. This adjusted number is the FTE allocation to the school.

COMMUNITY LAB SCHOOL

Community Lab School

General School Information

- Grades Served: 6-12
- Address: 1200 Forest Street, Charlottesville, VA 22903
- Phone: 434-296-3090
- Principal: Chad Ratliff

ACPS' charter school serves grades 6 through 12 and aims to foster creativity and intellectual curiosity through art and design, experiential learning, mastery, and student agency. This approach aligns CLS directly with the School Board's vision for Learning for All: Our learners are engaged in authentic, challenging, and relevant learning experiences, becoming lifelong contributors and leaders in our dynamic and diverse society. CLS is also an International Baccalaureate (IB) World School, offering the Diploma Program to ACPS 11th and 12th graders.



Chad Ratliff
Principal
2017-Present



School Quality Profile

For the 2021-22 school year, Community Lab School received a full accreditation status. For the full School Quality Profile, scan the QR code to the left or visit the [VDOE Community Lab School Quality Profile](#) web page.

Student Enrollment

Historical Fall Membership

	2020-2021	2021-2022	2022-2023
Total Enrollment	162	194	192
Students with Disabilities	21.0%	19.6%	19.8%
English Learners	2.5%	2.1%	2.6%
Economically Disadvantaged	22.2%	4.6%	7.8%

Projections for FY 24 Budget

Projected	
Total Enrollment	189
Economically Disadvantaged	24.0%



Facility Information

- Built in 1959
- 30,915 square feet
- 7.1-acre site

Albemarle County Public Schools' charter school serves middle and high school students from all three feeder patterns through an admissions process. Murray High School began serving high school students in 1988, while the Community Public Charter School opened to middle school students in 2008. The two schools merged into one charter school in 2020.

Career Learning Communities

- International Baccalaureate Program (IB)

COMMUNITY LAB SCHOOL

Community Lab School

Expense	19-20 Actuals	20-21 Actuals	21-22 Actuals	22-23 Adopted	23-24 Adopted	Increase	% Increase
Salary	\$1,563,717	\$1,616,739	\$1,846,843	\$1,935,699	\$2,104,966	\$169,267	8.7%
Other Wages	\$21,068	\$53,726	\$84,347	\$44,010	\$49,799	\$5,789	13.2%
Benefits	\$578,468	\$632,632	\$681,138	\$753,435	\$838,367	\$84,932	11.3%
Operations	\$62,433	\$81,362	\$91,929	\$57,331	\$71,779	\$14,448	25.2%
Total	\$2,225,687	\$2,384,459	\$2,704,257	\$2,790,475	\$3,064,911	\$274,436	9.8%

State Category Report	19-20 Actuals	20-21 Actuals	21-22 Actuals	22-23 Adopted	23-24 Adopted	Increase	% Increase
Instruction	\$2,050,771	\$2,175,786	\$2,513,230	\$2,559,036	\$2,820,527	\$261,491	10.2%
Admin/Attend&Health	\$48,296	\$47,107	\$50,255	\$52,202	\$103,350	\$51,148	98.0%
Technology	\$40,668	\$37,061	\$23,789	\$34,267	\$29,511	(\$4,756)	-13.9%
Building Services	\$85,952	\$124,506	\$116,983	\$144,970	\$111,523	(\$33,447)	-23.1%
Total	\$2,225,687	\$2,384,459	\$2,704,257	\$2,790,475	\$3,064,911	\$274,436	9.8%

FTE Summary	22-23 FTE	23-24 FTE
Instruction	29.29	27.81
Assistant Principal		1.00
Clerical	2.00	2.00
Principal	1.00	1.00
Teacher^	19.77	21.81
Teaching Assistant	6.52	2.00
Admin/Attend&Health	1.00	2.00
Nurse	1.00	1.00
Teaching Assistant		1.00
Technology	0.40	0.40
Other Technical	0.20	0.10
Teacher^	0.20	0.30
Building Services	2.63	2.00
Custodial	2.63	2.00
Total	33.32	32.21

Adjusted FTE^^	30.1	30.7
----------------	------	------

^Positions included within the Teacher category are detailed in Section G – Staffing Allocations.

^^ Teaching Assistants (TAs) are allocated at a 2 TA to 1 Teacher ratio. This adjusted number is the FTE allocation to the school.

CENTER I

Center I

General Information

- Address: 1180 Seminole Trail, Suite 225, Charlottesville, VA 22901
- Phone: 434-244-8900
- Director: Jeff Prillaman

Center I is Albemarle County Public School's high school specialty center that hosts an Information and Communication Technology learning community. As a learning center designed to support students exploring their passions and interests, the student experience over three years evolves from introductory coursework to capstone projects that include self-directed and work-based learning experiences. The passion, problem, and project-based approach to instruction bring together both elective course work within the ICT field along with academic courses to ensure students see purpose and relevance in their work at Center I.



Jeff Prillaman
Director
2022-Present

Center I serves students in grades 10, 11, and 12 within the ICT learning community while also continuing to offer a range of experiences for students in their senior year. On a collegiate schedule, with college faculty, students can elect to sign up for Composition I and II and US Government I and II to meet their English 12 and US/VA Government graduation requirements. Students can also participate in a self-directed learning experience where, with the support of Center I faculty, they can complete a Senior Capstone Project in an area of interest. A Senior Capstone Project can focus on one large project or be composed of several smaller ones. The outcomes of the project are determined by the student and may include high school course credit, earning an industry-recognized credential, participation in a work-based learning experience, and/or completion of a robust portfolio to support career and college aspirations.

Student Enrollment¹

Historical Enrollment

	2020-2021	2021-2022	2022-2023
Daily Enrollment	55	76	99

Projections for FY 24 Budget

Projected	
Daily Enrollment	120
Economically Disadvantaged	28.2%



Facility Information

- Opened in 2018
- 42,274 square feet (all programs)
- Located in the Seminole Place complex

Career Learning Communities

- Information & Communication Technology

¹ Enrollment shown is daily enrollment. Total student enrollment is double the daily enrollment.
School Locations: D-60

CENTER I

Center I

Expense	19-20 Actuals	20-21 Actuals	21-22 Actuals	22-23 Adopted	23-24 Adopted	Increase	% Increase
Salary	\$177,816	\$346,578	\$502,938	\$742,044	\$935,661	\$193,617	26.1%
Other Wages	\$44	\$7,260	\$18,033	\$10,617	\$27,913	\$17,296	162.9%
Benefits	\$69,937	\$128,558	\$188,072	\$283,737	\$348,656	\$64,919	22.9%
Operations	\$77,807	\$34,775	\$64,470	\$70,349	\$63,877	(\$6,472)	-9.2%
Total	\$325,604	\$517,171	\$773,512	\$1,106,747	\$1,376,107	\$269,360	24.3%

State Category Report	19-20 Actuals	20-21 Actuals	21-22 Actuals	22-23 Adopted	23-24 Adopted	Increase	% Increase
Instruction	\$275,909	\$491,751	\$728,552	\$1,062,779	\$1,263,788	\$201,009	18.9%
Admin/Attend&Health	\$49,695	\$25,420	\$44,961	\$43,968	\$47,756	\$3,788	8.6%
Building Services					\$64,563	\$64,563	
Total	\$325,604	\$517,171	\$773,512	\$1,106,747	\$1,376,107	\$269,360	24.3%

FTE Summary	22-23 FTE	23-24 FTE
<input type="checkbox"/> Instruction	11.76	12.66
Assistant Principal	1.00	
Clerical	1.00	1.00
Principal		1.00
Teacher^	8.76	9.66
Teaching Assistant	1.00	1.00
<input type="checkbox"/> Admin/Attend&Health	1.00	1.00
Nurse	1.00	1.00
<input type="checkbox"/> Building Services		1.00
Custodial		1.00
Total	12.76	14.66

Adjusted FTE^^	12.3	14.2
----------------	------	------

^Positions included within the Teacher category are detailed in Section G – Staffing Allocations.

^^ Teaching Assistants (TAs) are allocated at a 2 TA to 1 Teacher ratio. This adjusted number is the FTE allocation to the school.

POST HIGH

Post High

General Information

- Address: 915 Henry Avenue, Charlottesville, VA 22903
- Phone: 434-977-4610
- Coordinator: Emily Blase

Post High serves 18- to 22-year-old students with a variety of special capacities. The Post High program is designed to provide supported transitions from the traditional school setting to an adult life in the community. Students receive instruction in employment skills, functional academic skills, social skills, and independent living skills according to an individualized education plan. The Post High staff work closely with the students, their families, and appropriate adult service agencies to facilitate a positive transition.



Emily Blase
Coordinator
2022-Present

Post High's specialized instruction includes focuses on:

- Vocational Skills — Developing the ability to secure, maintain and be successful in the workplace and on the job.
- Functional Academic Skills — Continuing to develop academic achievement in the context of everyday life.
- Social Skills — Increasing the capacity to engage peers, family and people in the community and workplace through communication and behaviors that promote positive relationships.
- Independent Living Skills — Learning and practicing competencies needed to experience a rewarding and productive life while engaging the community in which we live.

Prior to FY 2020/21, this budget was previously shown as part of *Albemarle High School*.

Student Enrollment

Historical Fall Membership

	2020-2021	2021-2022	2022-2023
Total Enrollment	21	22	28

Projections for FY 24 Budget

Projected	
Total Enrollment	28



Facility Information

- Opened in 2002
- 2,350 square feet
- Located behind Burley Middle School

POST HIGH

Post High

Expense	19-20 Actuals	20-21 Actuals	21-22 Actuals	22-23 Adopted	23-24 Adopted	Increase	% Increase
Salary		\$268,972	\$322,220	\$372,415	\$496,335	\$123,920	33.3%
Other Wages		\$7,283	\$9,000				
Benefits		\$143,161	\$152,400	\$178,366	\$218,155	\$39,789	22.3%
Total		\$419,416	\$483,620	\$550,781	\$714,490	\$163,709	29.7%

State Category Report	19-20 Actuals	20-21 Actuals	21-22 Actuals	22-23 Adopted	23-24 Adopted	Increase	% Increase
Instruction		\$419,416	\$483,620	\$550,781	\$714,490	\$163,709	29.7%
Total		\$419,416	\$483,620	\$550,781	\$714,490	\$163,709	29.7%

FTE Summary	22-23 FTE	23-24 FTE
☐ Instruction	9.33	12.00
Teacher^	3.33	4.00
Teaching Assistant	6.00	8.00
Total	9.33	12.00

Adjusted FTE^^	6.3	8.0
----------------	-----	-----

^ Positions included within the Teacher category are detailed in Section G – Staffing Allocations.

^^ Teaching Assistants (TAs) are allocated at a 2 TA to 1 Teacher ratio. This adjusted number is the FTE allocation to the school.

^^^ Prior to 21-22 this budget was included in as part of Albemarle High School.

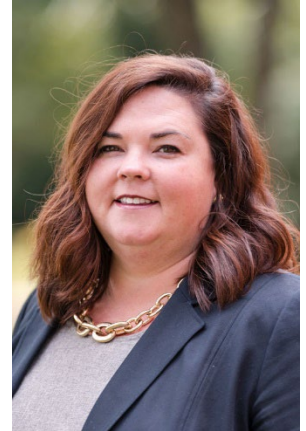
CATEC

Charlottesville Albemarle Technical Education Center (CATEC)

General Information

- Address: 1000 East Rio Road, Charlottesville, VA 22901
- Phone: 434-973-4461
- Director: Stephanie Carter

The Charlottesville-Albemarle Technical Education Center (CATEC) is a regional technical education center that serves Albemarle County and Charlottesville City. CATEC offers a wide variety of skilled-trades and CTE electives that train high school students to pursue their passion through a fulfilling career. Students have opportunities to practice hands-on and work-based learning activities alongside academically driven curricula that enables them to earn dual-enrollment college credit, achieve industry certifications, and practice workplace readiness skills. CATEC prides itself on its integrated value, equity-based programs, and contribution to students' learning journeys.



Stephanie Carter
Director
2019-Present

Student Enrollment: Fall Membership

	2020-2021	2021-2022	2022-2023
Total Enrollment*	290	295	364
Total ACPS Enrollment	230	224	358

**Includes ACPS students, Charlottesville City Schools students, and out-of-district/homeschool students*

Facility Information

- Built in 1972
- 59,800 square feet
- 19.5-acre site

CATEC is operated jointly by Albemarle County Public Schools and Charlottesville City Schools.

Career Learning Communities

- Health & Medical Sciences
- Skilled Trades



CATEC

C.A.T.E.C

Expense	19-20 Actuals	20-21 Actuals	21-22 Actuals	22-23 Adopted	23-24 Adopted	Increase	% Increase
Salary			\$123,664	\$155,885	\$223,318	\$67,433	43.3%
Benefits			\$55,446	\$66,889	\$104,292	\$37,403	55.9%
Operations	\$1,770,408	\$1,775,695	\$2,020,362	\$2,142,530	\$2,276,413	\$133,883	6.2%
Total	\$1,770,408	\$1,775,695	\$2,199,472	\$2,365,304	\$2,604,023	\$238,719	10.1%

State Category Report	19-20 Actuals	20-21 Actuals	21-22 Actuals	22-23 Adopted	23-24 Adopted	Increase	% Increase
Instruction	\$1,770,408	\$1,773,175	\$2,226,666	\$2,365,304	\$2,604,023	\$238,719	10.1%
Admin/Attend&Health			\$1,077				
Building Services		\$2,520	\$3,229				
Total	\$1,770,408	\$1,775,695	\$2,230,972	\$2,365,304	\$2,604,023	\$238,719	10.1%

FTE Summary				22-23 FTE	23-24 FTE
☐ Instruction				3.33	5.00
Teacher^				1.33	2.00
Teaching Assistant				2.00	3.00
Total				3.33	5.00

Adjusted FTE^^	2.3	3.5
----------------	-----	-----

^Positions included within the Teacher category are detailed in Section G – Staffing Allocations.

^^ Teaching Assistants (TAs) are allocated at a 2 TA to 1 Teacher ratio. This adjusted number is the FTE allocation to the school.

Center for Learning & Growth

General Information

- Address: 225 Lambs Lane, Charlottesville, VA 22901
- Phone: 434-974-8070
- Coordinator: Kevin Kirst

The Center for Learning and Growth is the ACPS alternative learning program. The program recognizes that a restorative approach to the referral concerns, continued instruction and maintaining a connection to the student's neighborhood school is critical to the success of any specialized short-term intervention to ensure student success. Specialized support to individual students that require an alternative learning plan is available via a Superintendent referral for students in grades 6 through 12.

The staff provides a warm and welcoming experience for the students they serve. Students served by the Center for Learning and Growth are offered the opportunity to work through the events that led to their referral in a restorative context while continuing their learning with additional support that includes a blend of face-to-face instruction and computer-based instruction. The program offers the services of a caring staff who collaborate with each student's base school, including family and community partners to wrap around the student to meet the instructional, social and emotional needs of each student. Students eligible for services by the Center for Learning and Growth are typically determined by the Director of Student Services in cooperation with the school principal, parent, and student. Student referrals for services are also made through the Office of the Superintendent and as a result of School Board action.

Prior to FY 2021-22, this budget was previously included within Other Multi-School Services.

Center For Learning & Growth

Expense	19-20 Actuals	20-21 Actuals	21-22 Actuals	22-23 Adopted	23-24 Adopted	Increase	% Increase
Salary		\$141,230	\$280,688	\$322,519	\$297,503	(\$25,016)	-7.8%
Other Wages		\$4,000	\$4,000	\$21,092		(\$21,092)	
Benefits		\$51,693	\$102,761	\$118,722	\$110,010	(\$8,712)	-7.3%
Total		\$196,923	\$387,448	\$462,333	\$407,513	(\$54,820)	-11.9%

State Category Report	19-20 Actuals	20-21 Actuals	21-22 Actuals	22-23 Adopted	23-24 Adopted	Increase	% Increase
Instruction		\$196,923	\$387,448	\$462,333	\$407,513	(\$54,820)	-11.9%
Total		\$196,923	\$387,448	\$462,333	\$407,513	(\$54,820)	-11.9%

FTE Summary	22-23 FTE	23-24 FTE
☐ Instruction	4.34	4.34
Teacher^	4.34	4.34
Total	4.34	4.34

Adjusted FTE^^	4.3	4.3
----------------	-----	-----

^ Positions included within the Teacher category are detailed in Section G – Staffing Allocations.

^^ Teaching Assistants (TAs) are allocated at a 2 TA to 1 Teacher ratio. This adjusted number is the FTE allocation to the school.

Other Multi-School Services

This area is for staff that are typically assigned to schools throughout the year but are not yet currently assigned to a specific school. Examples of this include emergency staffing and some new proposals. They are assigned throughout the year to meet specific needs at individual schools.

Multi-School Services

Expense	19-20 Actuals	20-21 Actuals	21-22 Actuals	22-23 Adopted	23-24 Adopted	Increase	% Increase
Salary	\$3,692,153	\$3,769,402	\$3,833,307	\$7,367,137	\$8,050,741	\$683,604	9.3%
Other Wages	\$93,257	\$173,422	\$348,756	\$300,109	\$210,451	(\$89,658)	-29.9%
Benefits	\$2,264,403	\$2,419,286	\$3,500,277	\$3,876,266	\$4,140,813	\$264,547	6.8%
Operations			\$6,594				
Total	\$6,049,813	\$6,362,110	\$7,688,933	\$11,543,512	\$12,402,005	\$858,493	7.4%
State Category Report	19-20 Actuals	20-21 Actuals	21-22 Actuals	22-23 Adopted	23-24 Adopted	Increase	% Increase
Instruction	\$4,883,989	\$5,055,282	\$4,099,920	\$8,917,034	\$9,877,594	\$960,560	10.8%
Admin/Attend&Health	\$807,514	\$1,146,503	\$3,463,117	\$1,851,493	\$1,520,785	(\$330,708)	-17.9%
Technology	\$81,664	\$69,153	\$6,594	\$66,499	\$96,956	\$30,457	45.8%
Building Services	\$276,647	\$91,172	\$119,302	\$708,486	\$906,670	\$198,184	28.0%
Total	\$6,049,813	\$6,362,110	\$7,688,933	\$11,543,512	\$12,402,005	\$858,493	7.4%

FTE Summary	22-23 FTE	23-24 FTE
Instruction	78.27	89.55
Assistant Principal - Intern	2.00	2.00
Clerical	1.00	1.00
Other Management	0.10	
Other Professional		8.00
Social Worker	0.50	
Teacher^	74.67	68.55
Teaching Assistant		10.00
Admin/Attend&Health	22.20	14.20
Other Professional	8.00	
Psychologist	14.20	14.20
Technology	0.50	1.00
Other Technical		1.00
Teacher^	0.50	
Building Services	13.18	16.06
Custodial	13.18	16.06
Total	114.15	120.81
Adjusted FTE^^	114.2	115.8

^Positions included within the Teacher category are detailed in Section G – Staffing Allocations.

^^ Teaching Assistants (TAs) are allocated at a 2 TA to 1 Teacher ratio. This adjusted number is the FTE allocation to the school.

Other Multi-School Services

Multi-School FTEs

2.0	Intervention Teachers
1.0	Fiscal Trainer (Clerical)
47.7	Special Education Specialists
5.6	English Learner Teachers
14.2	Psychologists
8.0	Student Safety Coaches
2.0	Assistant Principal Interns
4.0	SEAD Teachers
3.8	Emergency Staffing Teachers
3.5	Reduce Class Loads Teachers
16.1	Custodians
2.0	Early Childhood Special Education Teachers (Pre-school)
5.0	School-Based Substitutes
1.0	Technology Support Specialist
115.8	