



**2023-2024
SMPSB
CONTINUOUS
LEARNING PLAN**

**FRED WILTZ
SUPERINTENDENT**

**600 Corporate Blvd.
Breaux Bridge, LA 70517**





ST. MARTIN PARISH SCHOOL SYSTEM

CONTINUOUS LEARNING PLAN

Operational Guidelines for School Re-entry

St. Martin Parish School System
600 Corporate Blvd.
Breaux Bridge, LA 70517
Phone: (337) 332-2105

Table of Contents

Section 1

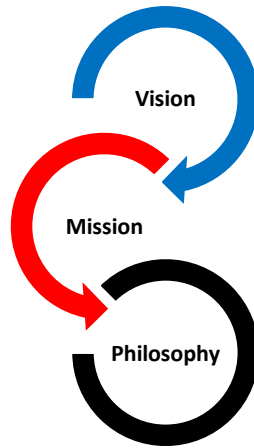
Vision, Mission, & Philosophy	2
-------------------------------------	---

Section 2

School & System Planning / Operations	3
Safety and Sanitation	4
Daily Routines	5
Parent Responsibilities.....	6
Transportation	6
Facilities.....	7
Food Services.....	7

Section 3

Curriculum, Instruction and Assessments	10
Academics: Instruction and Assessments	10
Group Sizes and Social Distancing	10
Instructional Models	11
Lesson Protocol	12
K-5 Instructional Protocol	12
Middle and High School Instructional Protocol	14
Student Attendance	15
Unfinished Learning and Learning Loss	16
Appendix.....	18
Medical Protocol	19



VISION STATEMENT

To improve education through sound educational practices that enhance teaching and learning and to provide educational opportunities for all stakeholders in an effort to make the St. Martin Parish School District second to none in the region, state, and nation.

MISSION STATEMENT

The St. Martin Parish School District will provide quality educational experiences while utilizing a TEAM approach with all stakeholders focused on SUCCESS.

PHILOSOPHY

It is the philosophy of the St. Martin Parish School District that a focus on attendance, attitude, application, and acclamations while addressing high academic standards will provide a quality education for all students. Its goal is to establish a strong, comprehensive education foundation for all of its students so they may become competent, productive members of society. It operates on the premise that education is a lifelong commitment, and TOGETHER, we will make our communities a better place in which to live.



School & System Planning

(Operations & Safety)

Operations

Safety and Sanitation

OPERATIONS
 Safety and Sanitation
 Transportation
 Facilities
 Food Services

If enhanced safety procedures are required due to COVID-19 or any other serious illness, the school year will progress with continued adherence to all guidelines for operating a safe school environment. Regulations for safety and sanitation are among the most important priorities for the safety of the students and staff.

The Louisiana, the Department of Health and Hospitals (DHH), the Office of Public Health (OPH) and the Louisiana Department of Education (LDOE) have provided safety guidelines for the reopening of school. All guidelines and regulations are aligned to data-driven medical guidance provided by the Center for Disease Control (CDC) as well as other medical and scientific personnel. For the safety of our students and staff members, St. Martin Parish will adhere to the guidance provided by the organizations listed above.

All personnel in public school offices will adhere to the following guidelines while on school property:

- Wash your hands regularly and use hand sanitizer
- If required, wear a face covering at all times in public spaces or in meetings, you may take it off when alone in your office
- Stay in your area unless your job requires you to visit other areas of the office or school
- Kitchens or lounge areas are off-limits except for the storage or heating of food. You may eat in your office
- Stay home and consult your doctor if you do not feel well or run a fever above 100.4. Students who arrive at school with a fever will be sent to the sick bay and assessed following the protocol in Appendix A

If enhanced safety procedures are required, all personnel and students on school grounds must adhere to the following:

- Wash your hands regularly (preferably every 2 hours) and use hand sanitizer. Guidance for using hand sanitizer will be further explained under transportation, facilities and food services
- Principals may implement additional times for handwashing and the use of hand sanitizer based on the needs on their school campus
- If required, teachers and students in grades 3-12 must wear a face covering at all times unless a medical condition prohibits the use of face coverings. This includes classrooms, playground areas, and all other areas of the campus. In this case, face coverings can only be removed when eating or drinking, when taking medications in the office, or if social distancing outdoors at least six (6) feet apart

- If face coverings are required, they will become a part of the school uniform and must be a solid color or may contain the following print: paisley, bandanas, camouflage, plaid, school spirit colors, emblems, and or words, and cartoon characters for the younger students. Neck wraps may not be used as face coverings. However, face coverings must not include pictures, printed words, political messages, religious messages, or symbols of any type.
- To reduce exposure, students will remain in static groups in one classroom. Students in grades 3 to 5 will remain in the classroom, while teachers of different subjects will rotate for a change in instruction at the appropriate time. The number of rotations should be limited to keep exposure to a minimum
- Teachers and students who arrive at the campus with a fever of 100.4 and are experiencing other symptoms of COVID 19 or any other serious illness, must be immediately isolated in a sick bay. The school must follow the medical protocol for all students with a fever of 100.4 or above and those exhibiting symptoms of COVID 19 or any other serious illness
- The sick bay must be sanitized after use by a student or adult with fever or symptoms of COVID 19 or any other serious illness



Daily Routines During Periods of Enhanced Safety Procedures

- All staff members, cafeteria workers, custodians and administrators may have their temperatures scanned upon arrival on the school campus
- Students will be issued hand sanitizer upon boarding the bus
- Each student may have their temperature checked upon arrival at school
- In grades PreK-2, students will remain in static (the same) groups throughout the day. In grades 3-5, students will remain in static (the same) groups to the maximum extent possible
- Students will report to a general area to join their static group and will then be escorted the cafeteria to wash their hands before picking up their breakfast. Students will follow the social distancing protocol to the greatest extent possible as they walk to the cafeteria or any area of the campus
- Breakfast will be served as a “grab and go” meal and students will eat in their classrooms. Teachers will administer hand sanitizer to students after breakfast. **All water fountains will be closed for safety reasons, therefore, students may bring bottles of water to school for drinking purposes during this time**
- Students seating will be arranged to meet the social distancing requirements of six (6) feet apart to the maximum extent possible

- When it is time for lunch, students will follow the social distancing protocol as they are escorted to the cafeteria to wash their hands and pick up a “grab and go” lunch
- Students will return to the classroom or a specified location on the campus to eat lunch
- Hand sanitizer will be administered after lunch before instruction resumes
- Any recess breaks for students in grades PreK-5 will take place in the classroom or in a designated area of the campus. Students will remain with their groups and will not be allowed to mix with other students during the break. Students will then be escorted to the restroom to wash their hands or be provided hand sanitizer upon their return to the classroom
- At the end of the day, students will be escorted to the bus area for loading through a process assigned by the principal requiring social distancing prior to loading the bus



Responsibilities During Periods of Enhanced Safety Procedures

- Parents are responsible for daily monitoring of their child/children for symptoms of COVID 19 or any other serious illnesses. Children with a fever should not be sent to school
- Parents should encourage their child/children to follow all instructions at school for their safety and the safety of others
- Parents are asked to support and assist their child/children in completing all assignments, both in class and those assigned as homework or through virtual instruction

Transportation



The St. Martin Parish Department of Operation and Transportation will take extra precautionary measures during enhanced periods of safety due to COVID-19 or any other illness by providing the following safety measures:

Phase of Pandemic	Safety Guidelines for Buses
Phase 1	Students will be seated one (1) per seat in every other seat unless they are from the same household
Phase 2	Buses will be filled to 50% of their seating capacity
Phase 3	Buses will be filled to 75% of their seating capacity

- Sanitize all buses using cloth towels and disinfectant before the school year begins. Wipe the hand rails, seat tops, seat backs, and seat cushions with disinfectant
- On a daily basis, wipe door handles, seat tops and commonly touched surfaces at the end of each route. This can be done while checking to make that no one is sleeping on the bus after the route.
- Once per week, wipe the hand rails, entire seat and commonly touched surfaces.

Facilities



All office and school facilities will be sanitized weekly and daily using the guidelines provided by the Louisiana, the Department of Health and Hospitals (DHH), the Office of Public Health (OPH), the Center for Disease Control (CDC) and the Louisiana Department of Education (LDOE). The list of guidelines below will be followed during enhanced periods of safety requirements to ensure the safety of all students, teachers, administrators and support staff members assigned to each site:

- Sanitize restrooms every hour and checked after each class exchange. Keep soap dispensers full and hand towels available
- Classrooms will be wiped down once per day. This means wiping all commonly touched surfaces including pencil sharpeners, door frames and door handles/knobs, desk tops and seat backs, phones, keyboards and computer carts
- Main entry doors will be wiped several times per day.
- Outdoor areas, like playgrounds, with high touched surfaces made of plastic or metal, such as grab bars and railings, will undergo normal routine cleaning

Food Services

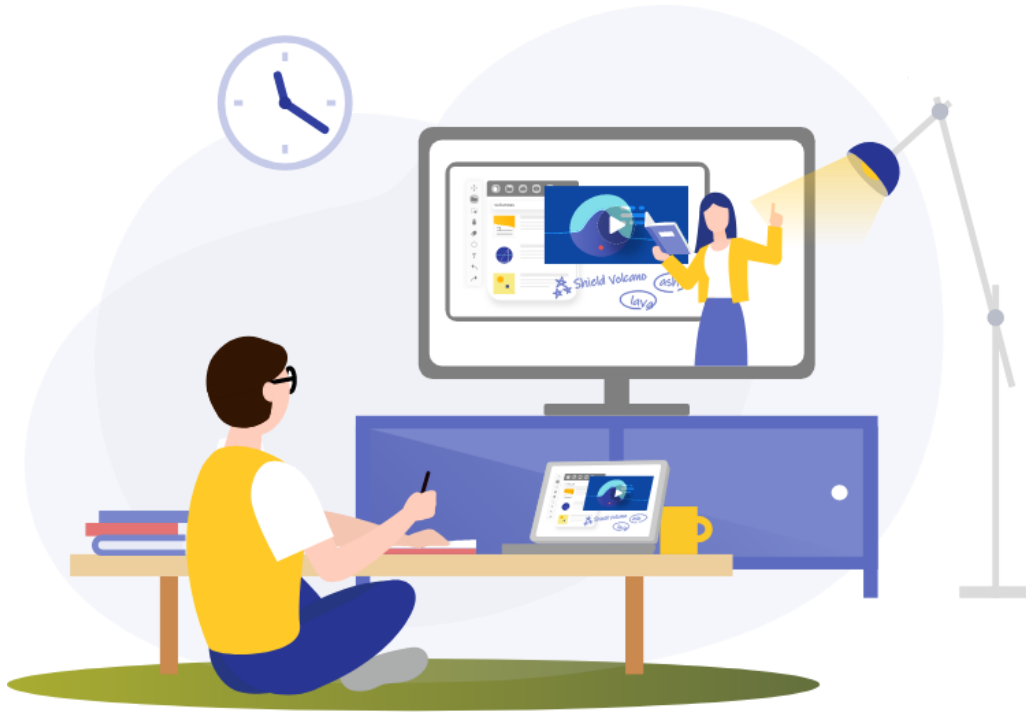


Breakfast and lunch will be provided to students on the school campus free of charge during enhanced periods of safety requirements due to COVID-19 or any other serious illnesses requiring special guidelines, if funds are provided by the state or federal government. During periods of mandated social distancing, the following protocol will take place for feeding:

Phase of Pandemic	Feeding Method
Phase 1	Students will participate in non-congregate feeding by exercising social distancing

OPERATIONAL GUIDELINES

Phase 2	Students will participate in non-congregate feeding by exercising social distancing
Phase 3	Congregate feeding may be allowed on a small scale. The size of the groups would follow the social distancing protocol and will be determined by the principal






Technology & Instructional Quality

Curriculum, Instruction and Assessments

In the event of periods requiring enhanced safety procedures, the school may look and feel different. The COVID-19 pandemic has caused school systems to seek different instructional avenues to provide instruction and assessment practices for teaching and student learning. The sections below are meant to inform teachers, students, and parents/guardians of the processes and guidelines to be used by St. Martin Parish educators in providing instruction to students during any form of school closure.

Academics

Instruction and Assessments

INSTRUCTION	
	Instruction & Assessment
	Instructional Models
	Lesson Protocol
<input checked="" type="checkbox"/>	Student Attendance

Instructional practices will require a different approach during period requiring enhanced safety procedures. All students will be issued an electronic device learning, including but not limited to the following: whole and small group classroom discussions, assignments, quizzes, tests, projects, discussion boards, etc.

The type of instructional practices used will continue to depend upon the enhanced safety requirements in place at the time of the school closure. If students are able to report to the campus, teachers will provide face-to-face instruction, including technology embedded lessons. If students are unable to report to the school campus, teachers will provide instruction through distance learning using the Google Suite of tools (Google Classroom, Google Meet, Google Hangout, etc.)

Group Sizes and Social Distancing

Should distance learning become a requirement at the beginning or anytime during the school year, the protocol followed during the COVID-19 pandemic will be followed. For group sizes meeting the criteria to return to school at each phase, please see the chart below. Distance learning could require a rotating schedule in which some students return to the campus on certain days while others remain at home. The next day, students who stayed at home on designated days will return to school while those who attended school on the school campus will remain at home. The hybrid schedule is flexible, meaning the number of students returning to school on any given day and those remaining at home will depend on the status of the pandemic. Parents, students, and school staff members should continue to be on the lookout for changes the Governor’s plan for reopening the state.

	Phase 1	Phase 2	Phase 3
Maximum Group Size	10, including adult	25, including adults	50, including adults
Elementary	Maintain static groups, understanding that individuals may come into close contact		
Secondary	The group’s composition may change, but maintain physical distance of six feet in classroom/indoor settings to the maximum extent possible		
Physical Standards	-Groups convene indoors in rooms enclosed by walls or partitions -High-touch surfaces (e.g., desks, doorknobs) are cleaned before and after each group’s use -Groups are separated outdoors but do not require a physical barrier		

	-Limit crowding at entry and exit points: maintain maximum group sizes and physical distance recommendations to the maximum extent possible
--	---

Instructional Models

Full Face-to-Face Instruction (All students return to the campus)



In this model, students would report to the school campus but will adhere to the restrictions put in place by the governor of Louisiana, the Department of Health and the Louisiana Department of Education.

- Teachers will provide instruction using the approved Tier 1 curriculum for each grade-level and/or content area through face-to-face whole group instruction, cooperative and collaborative learning groups, small group interventions, individualized activities and assignments through online instruction using Google Classroom and the Google Suite of tools, i.e., Google Meet, Google Hangout, etc. All classroom grouping will follow the protocol for group sizes and social distancing approved at the time of closure
- Teachers of all grade levels will assign students a minimum of one technology embedded/online lesson per week

Hybrid, Blended, and Flipped Instructional Models of Distance Learning



The **hybrid model** of instruction uses face-to-face instruction combined with instruction using technology to enhance learning. Hybrid teaching combines the best of both face-to-face teaching and online instruction to help students get the most out of instruction. The three major forms of hybrid teaching are as follows:

Station Rotation

In station rotation, students on the school campus are in classrooms, computer labs, the gymnasium or the library, each with divided workstations. Teachers could also implement station rotation with students using distance learning methods, e.g., breakout rooms in Google Meet or Google Classroom. Each station has online instruction that will enhance the lesson. The task in one station should not depend on completion of the task in other stations. Station rotation allows students to work at their own pace to develop an understanding of the content.

Individual Rotation

This type of rotation allows students to think through their own difficulties and needs. Each individual student has a list of activities specific to their needs and only rotates to stations specific to their schedule developed by the teacher.

Rotational Laboratory

The rotational laboratory is set up so that students alternate between technology-based laboratory to enhance what will be learned in another setting, i.e., a science lab, the classroom, or any space outside of the classroom.

Blended learning is sometimes referred to as hybrid instruction but differs from the hybrid model in that blended learning does not replace face-to-face instruction, but instead includes an online component meant to reinforce the content being taught. This includes, but is not limited to, articles, videos, projects, discussion boards, collaborative documents, chat boxes, screencast recordings, breakout rooms, etc.

The **Flipped classroom** also combines face-to-face instruction and online instruction. The difference between the flipped classroom and the hybrid or blended classroom is that the flipped classroom requires students to complete the online instruction to obtain foundational knowledge prior to the actual face-to-face lesson. The flipped classroom can be both hybrid or blended, however, the hybrid and blended classrooms are not always flipped.

Upon reentry into school, St. Martin Parish teachers will use a model or combination of models for online instruction that best fits the needs of the students in their classrooms. The planning of face-to-face and online components of lessons from the Tier 1 curriculum for each content area must be data-driven and take place during

Professional Learning Communities (PLCs) for each grade level and/or content area. PLCs may be hosted virtually or in-person, as long as the group(s) adhere(s) to the criteria for hosting groups identified for each phase.

State testing will take place during the school year, regardless of the instructional model in place.

Lesson Protocol

During times of distance learning due to required enhanced safety procedures, all instruction will be delivered through the Google Suite of tools. Teachers will post their individual expectations and directives for each course.

Primary/Elementary

K-5- Instructional Model

Face-to-Face

In order to comply with state COVID-19 guidelines, or any other illness requiring enhanced safety procedures, regulating group sizes in a public space, St. Martin Parish will implement face-to-face education for students in grades K-5. All students will report to their respective classrooms daily while maintaining the 24 to 1 ratio. Students will remain with this static (same) group of students

throughout the day. In grades 3-5, students will remain in their static groups while teachers change classes to educate them in different subjects/content areas.

Guidelines:

1. Students remain in static groups daily.
2. Teacher will implement instruction in person, using the necessary classroom tools; following all state guidelines.
3. Students will be graded on assignments, tests, projects, etc. as was done in the past.
4. Students will participate in a minimum of one online assignment weekly in Google Classroom weekly.
5. All 504 and 1508 accommodations/modifications will be followed.
6. RTI will continue as it did in the past.

SMPSB K-5 Virtual Program

For parents of students in grades K-5 who have chosen for their children to attend the St. Martin Parish School Board's virtual program, the following guidelines will be followed:

Guidelines:

1. Students participating in this program will receive a SMPSB issued Chromebook.
2. The student will complete 100% of their lessons online using the Accelerate program.
3. The student will have access to a teacher online as well as a teacher from their home-based school.
4. If the student needs extra assistance, they can report to their home-based school to meet with the virtual teacher based at their home school.
5. Students can contact the St. Martin Parish Virtual Learning Center for additional assistance between the hours of 3:30 p.m. and 7:00 p.m. from Monday through Thursday of each week.
6. Parents are able to check their child's daily progress.
7. Students will be graded on assignments and tests.
8. The students will also receive a report card at the end of each nine week reporting period.
9. An IEP committee will decide if a 1508 student will attend the virtual program.
10. Accommodations and modifications for 504 students will be provided.

Middle/High School – Grades 6-12

A – B Model

All students in St. Martin Parish will attend school on the **face-to-face model**. Should returning to the hybrid model become necessary, the following protocol will be implemented.

In order to comply with state COVID-19 guidelines, or any other illness requiring enhanced safety procedures, for regulating group sizes in a public space, St. Martin Parish will implement an A-B Model for instruction wherein schools will service 50% of their students on alternating days.

Students in grades 6-12 will be placed in either an A or B group; the group placement determines which days they are to report to campus physically and which days students will be instructed virtually.

Guidelines of A-B Model:

- 1) The weekly instruction schedule will be arranged as follows:
Monday: Group A Students
Tuesday: Group B Students
Wednesday: Planning & Prep Day, RTI Day
Thursday: Group A Students
Friday: Group B Students
- 2) Students with IEPs or IAPs which require daily implementation of accommodations and/or modifications will report to the school every day of the week, including Wednesdays.
- 3) Students from the same household will be scheduled in the same group—even if one student attends a junior high and another a high school.
- 4) Teachers will not repeat content instruction for two days; rather, students will be responsible for accessing and completing lessons virtually when not physically present. In a scope and sequence, students should move forward 3 or 4 lessons a week, not two.
- 5) Teachers will plan both the physical and the virtual components of the lesson. This is the fundamental reason students do not report on Wednesday. On Wednesdays, teachers will collaborate within their school as well as with teachers of the same grade level/content across the district via Zoom in formulating plans to ensure effective instruction takes place both when a student is physically present and when they are virtual.
- 6) Knowing what access students have when home will be a critical piece of information for all teachers. See sample lesson below for guidance.
- 7) For example: On a Group A day, the teacher works with 16 students in Group A in class on lesson. Lesson B students work on the same lesson on their Chromebooks at home. The

lesson is not “live streamed” because the district cannot guarantee adequate bandwidth nor can 100% of students access Internet while at home. Rather, students will access material prepared by teacher on Google classroom which, ideally, has a video of the instructional content as well as assignments students will submit for a possible grade. Student Chromebooks can be configured to work offline; meaning, necessary material such as video or documents will be downloaded to the Chromebook on the day students are in class to be accessed at any time when not in class.

- 8) In the St. Martin school district, **Stephensville Elementary** will not participate in A-B schedule. **Parks Middle 5th grade** will participate in A-B schedule to avoid conflict with the 6-8 schedule on the Parks Middle School campus.

- 9) For middle and high school students enrolled in the full virtual program at the **St. Martin Parish Virtual Learning Center**, students can contact the center for additional assistance between the hours of 3:30 p.m. and 7:00 p.m. from Monday through Thursday of each week. Student will have access to a teacher online as well as a teacher from their home-based school.

Student Attendance

To receive academic credit, all students are expected to attend school daily and complete all assignments as would be done during a normal school year. Students are expected to adhere to the policies and procedures for discipline in the St. Martin Parish Student/Parent Discipline Handbook for the current year, regardless of the instructional method (face-to-face, distance/virtual learning, or both). The handbook can be located on the district’s website located at <https://www.saintmartinschools.org/>.

For students participating in **face-to-face instruction**, teachers will take daily attendance in the physical classroom.

For students participating in **distance/virtual learning**, attendance will be taken daily through Google Classroom or Edgenuity. Students will be expected to log-in to Google Classroom or Edgenuity every day of school for attendance, as well as instruction and completion of assignments.

If students participate in the **hybrid model** and attend school on a modified schedule of face-to-face and distance/virtual learning, teachers will take daily attendance when students are in the physical classroom and during distance/virtual learning through Google Classroom or Edgenuity.

Instructional minutes will be adhered to for students attending school on the school campus. For students attending school via distance/virtual learning, the BESE approved policy on instructional minutes will be adhered to to the maximum extent possible.

All students, with the exception of Gifted and Talented and Speech Only students, who receive daily minutes, accommodations, and/or modifications as identified by their IEP under Bulletin 1508 or IAP under Section 504, shall report to school each day.

Unfinished Learning and Learning Loss (ESSER Interventions)

Moving forward into the 2023-2024 school year, St. Martin Parish will provide multiple learning opportunities for students who may have experienced learning loss due or unfinished learning at the beginning of the pandemic, as well as those who have not been able to keep up with grade-level instruction during the 2022-2023 school year. Students have been provided opportunities to participate in the **St. Martin Parish Summer Learning Program** in 2021, 2022, and 2023. The summer learning program will target priority students in PreK-5 who are exhibiting deficiencies in reading and math, while also targeting priority students in grades 6-12 who are struggling to meet mastery of grade-level standards in ELA/English, math, science, and social studies. In addition, high school students will be offered opportunities the strengthen their skills in preparation for the ACT and/or WorkKeys exam(s).

The summer learning program will offer students tutoring through the Accelerate tutoring process in the core content areas. Teachers rated *Highly Effective* and *Effective Proficient* will be selected to work with struggling students. A learning plan will be created for each student to progress through his/her targeted plan of action to reach mastery of grade-level standards. Having dealt with the challenges of a world-wide pandemic, students will also be provided opportunities to develop their social-emotional well-being through enrichment classes/activities such as, art, music, theatre, physical education and outdoor activities, games, field trips, STEM (St. Martinville area only), etc.

St. Martin Parish will continue to offer the **Academic Summer School** program for students not meeting promotion requirements in a course. Students in grades 3-12 will participate in the **St. Martin Parish Virtual Learning Program** to recovery academic deficiencies. Any student who did not meet the promotion guidelines by failing one course for the 2023-2024 school year, may attend Academic Summer School to recover the academic deficiency, and if successful, promote to the next grade level. Students failing two or more academic courses listed in the mandated requirements for their grade level, would not qualify to attend academic summer school for promotion to the next grade level (See the St. Martin Parish Pupil Progression Plan on the St. Martin Parish Website under the Policies heading for promotion and retention guidelines).

As reading is the center of one's education, St. Martin Parish will continue to focus on providing students access to a Tier 1 foundational reading curriculum. The K-2 schools will be assigned a literacy coach to ensure successful implementation of the structured, phonics-based literacy curriculum, with a focus on knowledge building and vocabulary development. The goal is to have all students reading by the time they enter third grade.

An assessment program will be implemented at each high school to assess student progress in the four core content areas. This will provide teachers with explicit data that will identify areas in need of strengthening for each student. Teachers can plan their lessons around the supports or scaffolds required for each student to successfully access grade-level texts and master the grade-level standards. Data from the assessments will also be used to structure intervention periods at each high school. The Accelerate tutoring process will be used to target student deficits just before or simultaneously as the skills are taught in the grade level curriculum. A major focus of high school instruction will also address preparation for the ACT.

St. Martin Parish has ensured that all students have access to a device in the event that a shift to distance learning is required. Teachers will continue to receive professional development to provide effective instruction through distance learning. Classrooms will be equipped with interactive white boards and cameras to provide synchronous and asynchronous instruction. Online Tier 1 curriculum digital resources will be provided to supplement the Tier 1 curriculum in each content areas. This will enhance instruction through distance learning. Classroom teachers will continue to use technology resources with students during face-to-face instruction.

The District Curriculum Leadership Team will continue to focus on improving leadership skills for administrators and teacher collaboration in an effort to improve student performance through coaching and support. The District Instructional Action Plan will continue to evolve through a data-driven process.

APPENDIX

Medical Protocol

Updated February 2022

Transitional Guidance

<u>Face Coverings</u>	<ul style="list-style-type: none"> • Face coverings are optional on school campuses.
<u>School Procedures</u>	<ul style="list-style-type: none"> • Eating in the cafeteria may resume if the school can accommodate due to staffing or schedules. Use of the cafeteria is at the discretion of each site principal.
<u>Events</u>	<ul style="list-style-type: none"> • Before submitting for approval to the directors, it is imperative that principals/administrators take into consideration missed instructional time, student grades, and other indicators of academic performance/progress. Pre-approval by principals and submission to directors signifies that administrators have reviewed student(s) status and strongly agree that the benefits of student participation in extra events far outweighs the consequence from students missing school. • All events occurring during the instructional day must be submitted to the directors for approval. • All school trips, including out-of-town trips, must continue to be submitted to the directors for approval.
<u>Symptoms/Fever</u>	<ul style="list-style-type: none"> • Children who are ill are to remain at home. • If a student has a verified temperature 100.4 or greater, they will be sent home until they are fever free for 24 hours without the use of fever reducers.
<u>Communicable Disease Protocols Policy JGCC</u>	<ul style="list-style-type: none"> • All positive cases should be reported to the School Based Health Center. • For positive cases: <ul style="list-style-type: none"> ○ Stay home for 5 days ○ If symptoms are resolving after 5 days, the student can return to school. <ul style="list-style-type: none"> ▪ If the student continues to have a fever or if symptoms have not improved after 5 days, stay in isolation until fever-free for at least 24 hours without the use of fever-reducing medication.
<u>Absences</u>	<ul style="list-style-type: none"> • An excused absence will be entered when a doctor’s excuse is provided confirming a positive COVID case. • Home COVID tests will be treated the same as a parent note.

	<ul style="list-style-type: none"> The parent’s choice to quarantine without a documented positive case will not be an excused absence unless the student has been quarantined by a physician as documented by a doctor’s excuse.
<u>Signs</u>	Please remove all COVID related signs (masks, social distancing, etc...)
<u>Elementary COVID Courtesy Exposure Call</u>	<ul style="list-style-type: none"> If the school receives a report of a positive COVID case on campus, a courtesy exposure JCall will be sent to that student’s class. If there are three or more cases in one grade level in one day, an exposure JCall will be sent to the entire grade level. <p>Good morning/afternoon: This is (insert name) from (insert name). This is a courtesy call to inform you, your student was exposed to COVID-19 at school. If your child becomes ill, keep him/her home and contact the school. Thank you.</p>
<u>Middle/High School COVID Courtesy Exposure Call</u>	<ul style="list-style-type: none"> If the school receives a report of a positive COVID case on campus, a courtesy exposure JCall will be sent to that student’s schedule. If a positive case is identified on a sports team, the coach will be responsible for notifying the parents of the remaining players of the exposure. If there are three or more cases on one campus in one day, an exposure JCall will be sent to the entire school. <p>Good morning/afternoon: This is (insert name) from (insert name). This is a courtesy call to inform you, your student was exposed to COVID-19 at school. If your child becomes ill, keep him/her home and contact the school. Thank you.</p>