



Redistricting Planning Scenarios Supplemental Info

June 27, 2023



Supplemental Info for Q&A



Jennings ECC Clarifications



Jennings ECC Clarifications

Working with FPS administration, it was envisioned that the Jennings ECC would house all Pre-K classrooms in the district, including:

- Six (6) Pre-K classrooms currently at Fairfield Warde
- Four (4) Pre-K classrooms currently at Stratfield
- Five (5) additional Pre-K classrooms for program expansion

In addition to the Pre-K classrooms, additional classrooms would be needed for an ECC including OT, PT, other support services (est. 3 classrooms), conference room, and team room.

Core spaces including the main office, nurses office, and gym would also support the ECC.



Redistricting Impacts By Grade



Scenario 1A

Redistricting Impacts by Grade

Based on 10/1/2022 enrollment

Grade (10/1/22)	Count
K	139
1	151
2	146
3	159
4	148
5	0 *

* 220 5th graders would transition to a different middle school compared to status quo

Grade (10/1/22)	Count
6	249
7	235
8	0 *

* 24 8th graders would transition to a different high school compared to status quo

Grade (10/1/22)	Count
9	39
10	27
11	38
12	0



Scenario 3

Redistricting Impacts by Grade

Based on 10/1/2022 enrollment

Grade (10/1/22)	Count
K	63
1	74
2	61
3	84
4	81
5	0 *

No impacts to Middle and High School grades

All 5th graders would transition to the same middle school as status quo



Scenario 4

Redistricting Impacts by Grade

Based on 10/1/2022 enrollment

Grade (10/1/22)	Count
K	101
1	133
2	114
3	119
4	136
5	0 *

* 66 5th graders would transition to a different middle school compared to status quo

Grade (10/1/22)	Count
6	74
7	80
8	0 *

* 44 8th graders would transition to a different high school compared to status quo

Grade (10/1/22)	Count
9	54
10	51
11	47
12	0



Redistricting Impacts By Grade for Satellite Zones (Scenario 3)



Scenario 3 Satellite Zones

Redistricting Impacts by Grade

Based on 10/1/2022 enrollment

McKinley to Stratfield Satellite Zone

Grade (10/1/22)	Count
K	22
1	21
2	23
3	18
4	24
5	0 *

All 5th graders would transition to the same middle school as status quo

Stratfield to McKinley Satellite Zone

Grade (10/1/22)	Count
K	18
1	17
2	11
3	25
4	12
5	0 *

All 5th graders would transition to the same middle school as status quo



Walker Impacts



Scenario 1A: Walker Impacts

Total Existing Elementary Walkers (ID from FPS Data)	1,601
Walkers Redistricted in Scenario 1A	125
Redistricted Walkers who can Walk to New School *	39
Net Impacts to Walkers	86

* Based on FPS Transportation policy of $\frac{3}{4}$ mile.



Scenario 3: Walker Impacts

Total Existing Elementary Walkers (ID from FPS Data)	1,601
Walkers Redistricted in Scenario 3	20
Redistricted Walkers who can Walk to New School *	0
Net Impacts to Walkers	20

* Based on FPS Transportation policy of $\frac{3}{4}$ mile.



Scenario 4: Walker Impacts

Total Existing Elementary Walkers (ID from FPS Data)	1,601
Walkers Redistricted in Scenario 4	154
Redistricted Walkers who can Walk to New School *	64
Net Impacts to Walkers	90

* Based on FPS Transportation policy of $\frac{3}{4}$ mile.



K-5 Enrollment Projections



Scenario 1A: Elementary

ES School	22-23	23-24	24-25	25-26	26-27	27-28	28-29	29-30	30-31	31-32	32-33
Burr	407	402	415	404	428	437	442	452	463	468	468
Dwight	353	356	366	359	356	352	356	359	366	371	369
Holland Hill	437	446	457	469	486	494	498	500	512	519	520
Jennings	Repurposed as ECC										
McKinley	438	452	435	441	445	447	467	463	466	470	469
Mill Hill	366	371	363	372	374	373	376	379	382	387	386
North Stratfield	398	412	419	419	424	413	421	427	430	435	434
Osborn Hill	428	439	447	445	454	445	439	444	448	452	450
Riverfield	392	389	388	393	415	399	402	410	414	420	419
Roger Sherman	397	406	408	405	399	412	412	420	424	428	427
Stratfield	422	438	427	427	419	426	425	433	439	444	444



Scenario 3: Elementary

ES School	22-23	23-24	24-25	25-26	26-27	27-28	28-29	29-30	30-31	31-32	32-33
Burr	301	309	314	312	327	324	333	337	346	351	352
Dwight	314	310	314	309	312	314	319	320	325	327	326
Holland Hill	379	389	398	400	412	413	408	413	416	423	421
Jennings	246	252	255	254	257	255	257	260	263	267	265
McKinley	419	433	431	431	436	441	442	445	452	457	456
Mill Hill	347	349	345	352	353	355	356	360	366	369	369
North Stratfield	463	463	472	467	475	470	489	492	497	500	500
Osborn Hill	434	445	453	454	464	456	447	453	457	462	462
Riverfield	372	372	372	378	393	381	384	387	389	394	394
Roger Sherman	397	407	408	405	399	411	412	419	423	428	426
Stratfield	366	382	363	372	372	378	391	401	410	416	415



Scenario 4: Elementary

ES School	22-23	23-24	24-25	25-26	26-27	27-28	28-29	29-30	30-31	31-32	32-33
Burr	389	398	400	397	416	418	426	429	446	447	448
Dwight	323	321	326	324	323	322	332	338	340	344	342
Holland Hill	377	389	390	394	398	398	406	412	416	423	421
Jennings	241	245	254	250	251	244	248	251	254	258	257
McKinley	414	438	424	422	433	435	428	433	434	439	437
Mill Hill	359	361	354	358	361	364	365	369	373	378	377
North Stratfield	339	340	351	345	347	349	357	363	368	374	373
Osborn Hill	402	407	416	419	428	421	416	418	422	426	426
Riverfield	385	385	390	393	413	398	395	401	407	410	411
Roger Sherman	396	403	402	412	408	424	435	443	451	454	454
Stratfield	413	424	418	420	422	425	430	430	433	441	440



Racial Balance Charts – Requested Alternative Formatting



Scenario 1A

School	2016-17	2017-18	2018-19	2019-20	2020-21	2021-22	2022-23	7-Yr Avg
Burr	18.4%	21.3%	21.7%	21.3%	20.4%	20.6%	20.4%	20.6%
% Deviation	-5.3%	-3.5%	-3.9%	-4.4%	-6.1%	-5.7%	-6.3%	-5.0%
Dwight	14.0%	13.2%	15.7%	16.3%	18.7%	18.6%	18.7%	16.5%
% Deviation	-9.7%	-11.6%	-9.9%	-9.3%	-7.8%	-7.7%	-8.0%	-9.2%
Holland Hill	38.3%	40.0%	40.1%	40.1%	41.0%	43.7%	42.6%	40.8%
% Deviation	14.6%	15.2%	14.4%	14.5%	14.6%	17.4%	15.8%	15.2%
McKinley	37.0%	38.6%	39.7%	41.7%	43.7%	42.4%	43.4%	40.9%
% Deviation	13.3%	13.8%	14.0%	16.0%	17.2%	16.1%	16.7%	15.3%
Mill Hill	19.5%	21.6%	20.8%	21.4%	22.6%	20.5%	20.8%	21.0%
% Deviation	-4.3%	-3.1%	-4.9%	-4.2%	-3.9%	-5.8%	-6.0%	-4.6%
North Stratfield	27.2%	27.0%	26.7%	25.4%	26.7%	26.8%	26.6%	26.7%
% Deviation	3.5%	2.2%	1.1%	-0.2%	0.2%	0.6%	-0.1%	1.0%
Osborn Hill	15.3%	18.2%	20.2%	20.2%	22.7%	20.6%	21.5%	19.8%
% Deviation	-8.4%	-6.6%	-5.5%	-5.4%	-3.8%	-5.7%	-5.2%	-5.8%
Riverfield	14.1%	15.7%	16.3%	15.7%	15.7%	17.6%	16.6%	15.9%
% Deviation	-9.7%	-9.1%	-9.4%	-10.0%	-10.7%	-8.6%	-10.1%	-9.7%
Roger Sherman	13.8%	14.6%	15.6%	13.6%	13.1%	12.8%	15.9%	14.2%
% Deviation	-9.9%	-10.2%	-10.1%	-12.1%	-13.4%	-13.5%	-10.9%	-11.4%
Stratfield	35.3%	33.9%	34.1%	35.0%	34.8%	34.0%	36.0%	34.7%
% Deviation	11.6%	9.1%	8.4%	9.3%	8.3%	7.7%	9.3%	9.1%
K-5 Total	23.7%	24.8%	25.7%	25.6%	26.5%	26.3%	26.7%	

Impending Imbalance

Racially Imbalanced

Based on Fairfield Public Schools enrollment extract. May vary from official numbers reported to SDE



Scenario 3

School	2016-17	2017-18	2018-19	2019-20	2020-21	2021-22	2022-23	7-Yr Avg
Burr	15.6%	17.7%	17.6%	20.4%	19.9%	23.2%	23.6%	19.7%
% Deviation	-8.1%	-7.1%	-8.1%	-5.2%	-6.6%	-3.1%	-3.1%	-5.9%
Dwight	14.1%	12.8%	16.1%	15.0%	17.2%	15.4%	15.3%	15.1%
% Deviation	-9.6%	-12.0%	-9.6%	-10.6%	-9.3%	-10.9%	-11.4%	-10.5%
Holland Hill	40.0%	40.8%	40.8%	39.0%	39.9%	42.3%	41.7%	40.6%
% Deviation	16.2%	16.0%	15.1%	13.4%	13.4%	16.1%	15.0%	15.0%
Jennings	21.1%	25.5%	25.7%	26.7%	26.2%	25.3%	28.0%	25.5%
% Deviation	-2.6%	0.7%	0.0%	1.1%	-0.3%	-1.0%	1.3%	-0.1%
McKinley	38.9%	38.7%	40.2%	40.7%	44.8%	43.2%	42.0%	41.2%
% Deviation	15.2%	13.9%	14.6%	15.1%	18.3%	16.9%	15.3%	15.6%
Mill Hill	19.5%	21.2%	20.4%	21.2%	22.7%	21.0%	21.0%	21.0%
% Deviation	-4.2%	-3.6%	-5.3%	-4.5%	-3.8%	-5.3%	-5.7%	-4.6%
North Stratfield	24.9%	25.4%	26.4%	24.7%	24.8%	23.9%	23.8%	24.8%
% Deviation	1.2%	0.6%	0.8%	-0.9%	-1.7%	-2.4%	-3.0%	-0.8%
Osborn Hill	15.1%	18.4%	20.3%	20.8%	22.7%	21.4%	21.0%	19.9%
% Deviation	-8.7%	-6.4%	-5.4%	-4.8%	-3.8%	-4.9%	-5.8%	-5.7%
Riverfield	13.8%	15.2%	16.4%	16.8%	17.1%	19.2%	18.8%	16.8%
% Deviation	-9.9%	-9.6%	-9.3%	-8.8%	-9.3%	-7.1%	-7.9%	-8.8%
Roger Sherman	13.8%	14.6%	15.6%	13.6%	13.1%	12.8%	15.9%	14.2%
% Deviation	-9.9%	-10.2%	-10.1%	-12.1%	-13.4%	-13.5%	-10.9%	-11.4%
Stratfield	38.7%	38.0%	37.7%	38.9%	38.6%	38.4%	41.0%	38.8%
% Deviation	15.0%	13.2%	12.1%	13.3%	12.1%	12.1%	14.3%	13.2%
K-5 Total	23.7%	24.8%	25.7%	25.6%	26.5%	26.3%	26.7%	25.6%

Impending Imbalance

Racially Imbalanced

Based on Fairfield Public Schools enrollment extract. May vary from official numbers reported to SDE



Scenario 4

School	2016-17	2017-18	2018-19	2019-20	2020-21	2021-22	2022-23	7-Yr Avg
Burr	14.3%	15.5%	16.6%	19.0%	18.8%	21.6%	22.1%	18.3%
% Deviation	-9.4%	-9.3%	-9.0%	-6.6%	-7.7%	-4.7%	-4.6%	-7.3%
Dwight	13.8%	13.3%	15.8%	15.4%	17.2%	16.1%	15.5%	15.3%
% Deviation	-9.9%	-11.5%	-9.9%	-10.3%	-9.2%	-10.1%	-11.2%	-10.3%
Holland Hill	42.8%	41.0%	43.9%	44.8%	45.6%	47.7%	46.7%	44.6%
% Deviation	19.1%	16.2%	18.2%	19.1%	19.1%	21.4%	20.0%	19.0%
Jennings	22.2%	28.7%	29.1%	29.9%	28.6%	24.7%	29.3%	27.5%
% Deviation	-1.5%	4.0%	3.4%	4.2%	2.2%	-1.6%	2.6%	1.9%
McKinley	46.2%	47.4%	47.3%	46.7%	49.2%	47.7%	47.3%	47.4%
% Deviation	22.5%	22.6%	21.7%	21.0%	22.7%	21.4%	20.6%	21.8%
Mill Hill	18.8%	20.7%	20.3%	20.3%	22.1%	19.8%	20.3%	20.3%
% Deviation	-4.9%	-4.1%	-5.3%	-5.3%	-4.4%	-6.5%	-6.4%	-5.3%
North Stratfield	24.6%	24.6%	26.2%	23.7%	24.4%	24.9%	24.2%	24.7%
% Deviation	0.9%	-0.2%	0.6%	-1.9%	-2.1%	-1.3%	-2.5%	-0.9%
Osborn Hill	17.8%	22.1%	22.8%	24.0%	26.2%	24.9%	24.7%	23.2%
% Deviation	-5.9%	-2.7%	-2.9%	-1.6%	-0.3%	-1.3%	-2.0%	-2.4%
Riverfield	14.6%	15.3%	16.4%	16.4%	16.8%	18.4%	19.2%	16.7%
% Deviation	-9.1%	-9.5%	-9.2%	-9.3%	-9.7%	-7.8%	-7.5%	-8.9%
Roger Sherman	19.5%	21.3%	21.6%	17.5%	17.8%	19.3%	21.2%	19.8%
% Deviation	-4.2%	-3.5%	-4.1%	-8.2%	-8.6%	-7.0%	-5.5%	-5.9%
Stratfield	24.0%	22.8%	21.5%	22.6%	22.0%	20.2%	21.5%	22.1%
% Deviation	0.3%	-2.0%	-4.2%	-3.1%	-4.5%	-6.1%	-5.2%	-3.5%
K-5 Total	23.7%	24.8%	25.7%	25.6%	26.5%	26.3%	26.7%	25.6%

Impending Imbalance

Racially Imbalanced

Based on Fairfield Public Schools enrollment extract. May vary from official numbers reported to SDE



Eliminated Scenario Requested Summaries



Scenario 1B: Summary

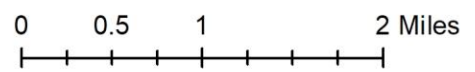
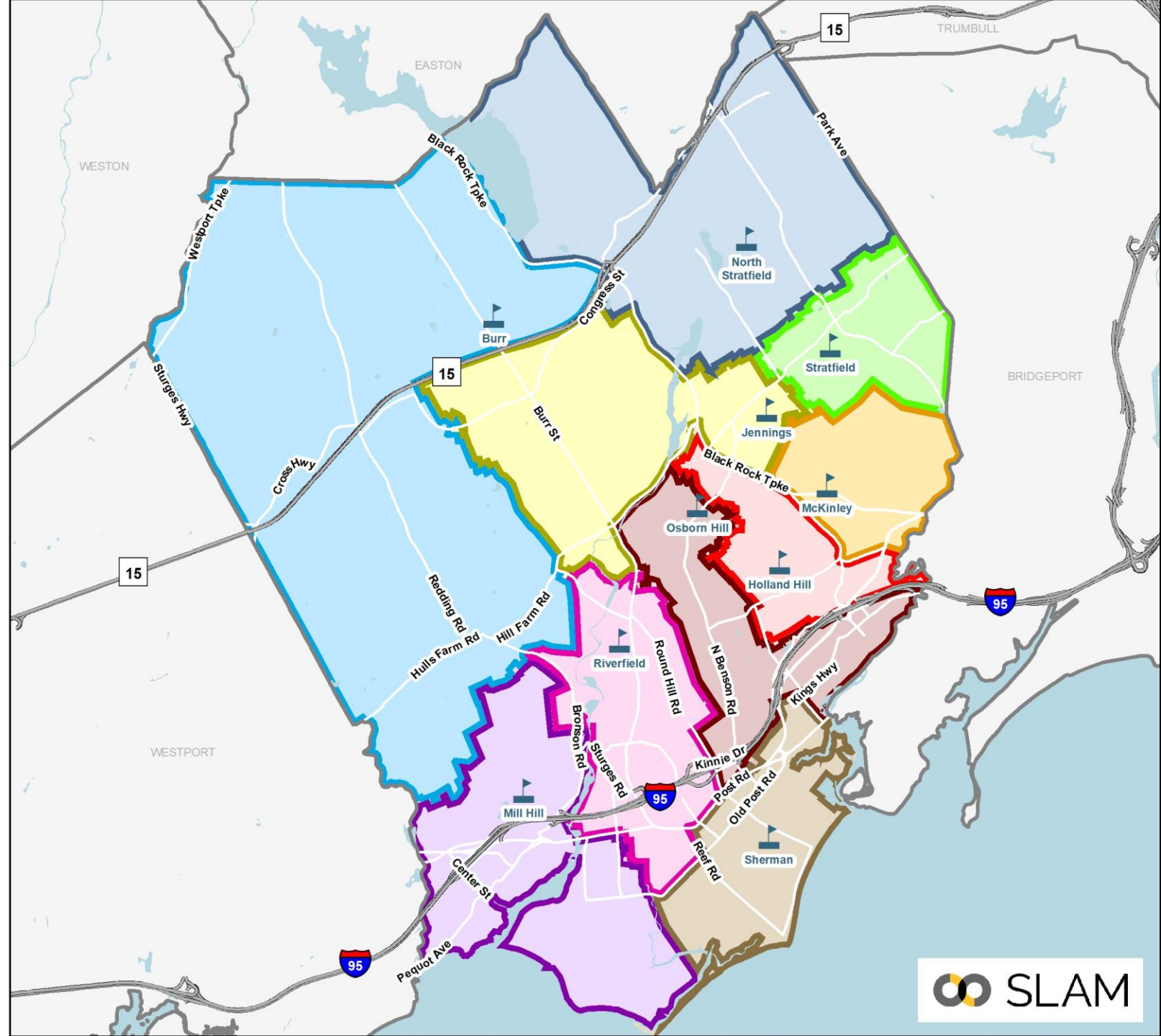
- All schools would have complied with the state racial balance law over the last seven years, however, both McKinley and Holland Hill are “impending imbalance” and approaching 25% deviation.
- Would balance utilization across all schools with all schools within ~5% of districtwide average over the next five years.
- Dwight is a less advantageous site for an ECC due to remoteness and lack of accessible ground floor classrooms.
- Would impact ~18% of elementary students.
- Net impacts to ~3% of walking elementary students. Some impacted students can walk to new school.
- Impacts to 11% of middle school students and 8% of high school students.
- Lack of room in elementary schools that feed into Roger Ludlowe and Fairfield Ludlowe.
 - Dwight area would be reassigned to Tomlinson and Fairfield Woods for Middle School, and Fairfield Warde for High School.

Objective	Description	Score
Address Racial Imbalance	McKinley and Holland Hill racially balanced, but exceed 20% in one or more years	Fair
Balance Utilization Across all Elementary Schools	All schools within 5% of districtwide average for the first 5 years of the projections	Good
Minimize Redistricting Impacts	18% of elementary school students	Fair
Student Walker Impacts	Minimal walking population at Dwight. Some impacted walkers can walk to new school. Net impacts to ~3% of walking students	Good
Secondary School Impacts	No changes to MS feeder No changes to HS feeder 11% of MS students impacted 8% of HS students impacted	

CONCEPTUAL BOUNDARIES FOR PLANNING PURPOSES ONLY

Scenario 1B Elementary Districts

- | | |
|---|--|
|  Burr |  North Stratfield |
|  Holland Hill |  Osborn Hill |
|  Jennings |  Riverfield |
|  McKinley |  Roger Sherman |
|  Mill Hill |  Stratfield |
| |  School Points |



CONCEPTUAL BOUNDARIES FOR PLANNING PURPOSES ONLY

Scenario 1B Elementary Districts



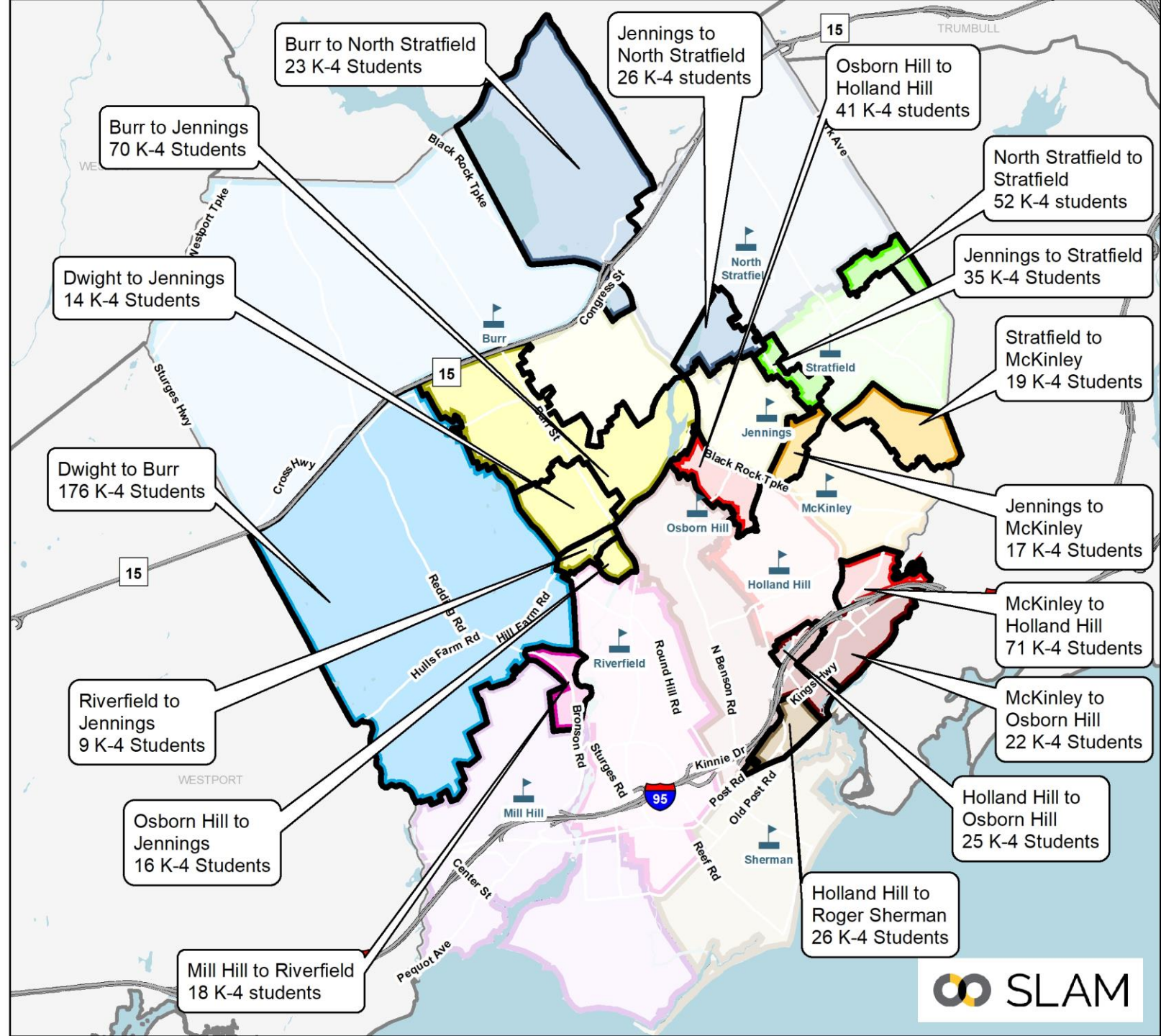
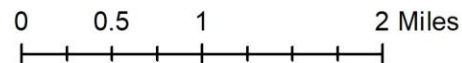
Redistricting Impacts (K-4):

- ~18% of elementary students
- Many small “pocket” areas moved

Greatest Share of Impacts to:

- Dwight: 27% of total impact
- Burr: 16% of total impact
- McKinley: 15% of total impact
- Jennings: 11% of total impact
- Osborn Hill: 8% of total impact
- Holland Hill: 7% of total impact

Note: All students were returned to their zoned schools





Scenario 2: Summary

- Maintains current 11-school alignment
- All schools would have complied with the state racial balance law over the last seven years, and no school exceeds 20% imbalance.
- Would balance utilization across all schools with all schools within ~5% of districtwide average over the next five years.
- Would impact ~11% of elementary students.
- Net impacts to ~1% of elementary walkers. Some impacted walkers can walk to new school.
- Satellite zones minimize redistricting impacts but depart from the district's traditional neighborhood-based model.
- Maintains existing middle and high school feeder pattern, but based on revised elementary attendance zones.
- Minimal redistricting impacts to middle school (3%) and high school (1%) students.

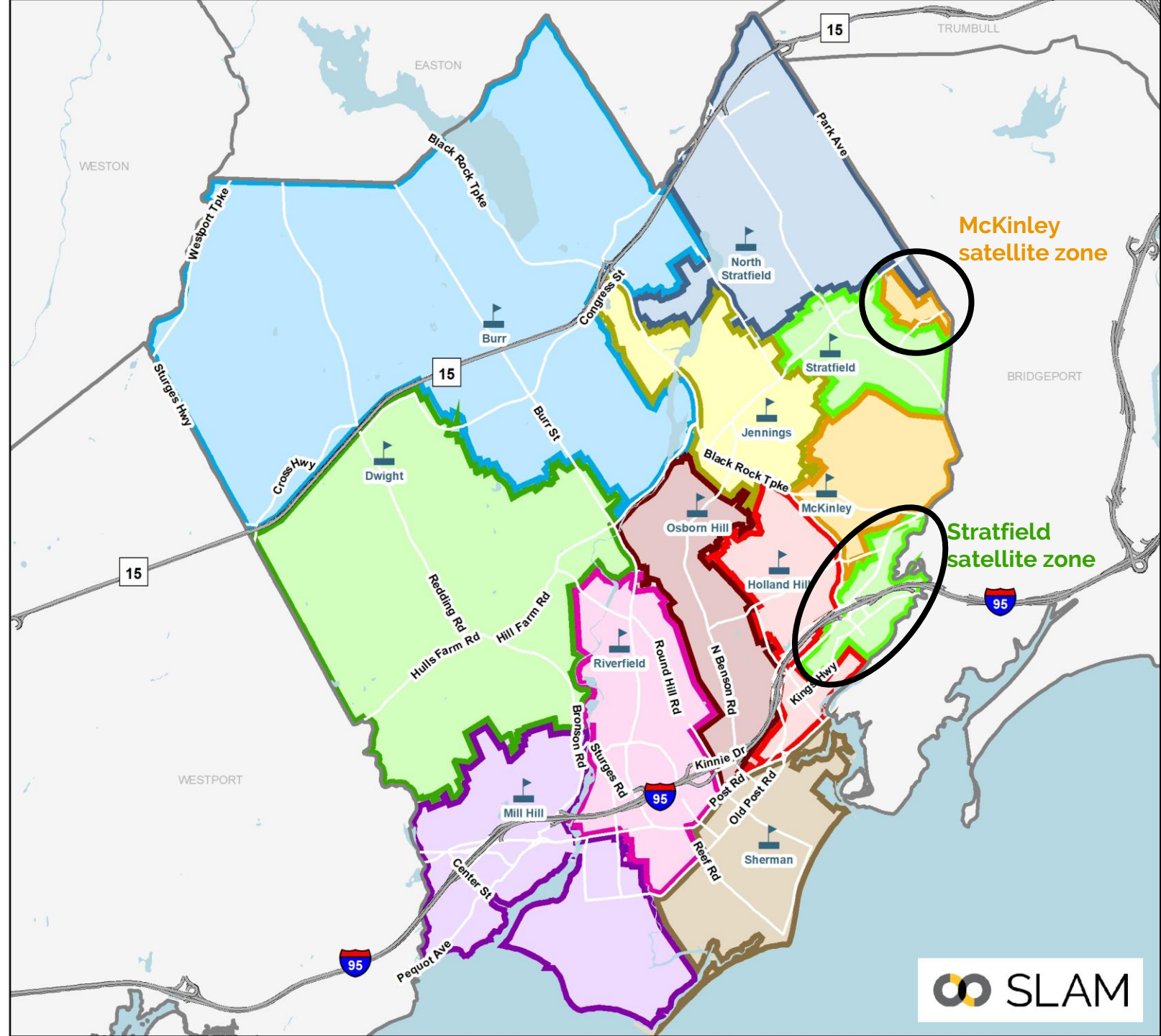
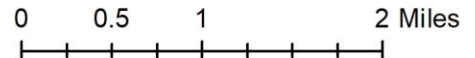
Objective	Description	Score
Address Racial Imbalance	All schools less than 20% of districtwide average over the last five years.	Good
Balance Utilization Across all Elementary Schools	All schools within 5% of districtwide average for the first 5 years of the projections	Good
Minimize Redistricting Impacts	11% of elementary school students	Fair
Student Walker Impacts	Minimal net impacts to ~1% of walking ES students. Some impacted walkers can walk to new school.	Good
Secondary School Impacts	No changes to MS feeder No changes to HS feeder 3% of MS students impacted 1% of HS students impacted	

CONCEPTUAL BOUNDARIES FOR PLANNING PURPOSES ONLY

Scenario 2 Elementary Districts

- | | |
|---|--|
|  Burr |  North Stratfield |
|  Dwight |  Osborn Hill |
|  Holland Hill |  Riverfield |
|  Jennings |  Roger Sherman |
|  McKinley |  Stratfield |
|  Mill Hill |  School Points |

Two satellite zones created in McKinley and Stratfield to address racial balance.



CONCEPTUAL BOUNDARIES FOR PLANNING PURPOSES ONLY

Scenario 2 Elementary Change Areas



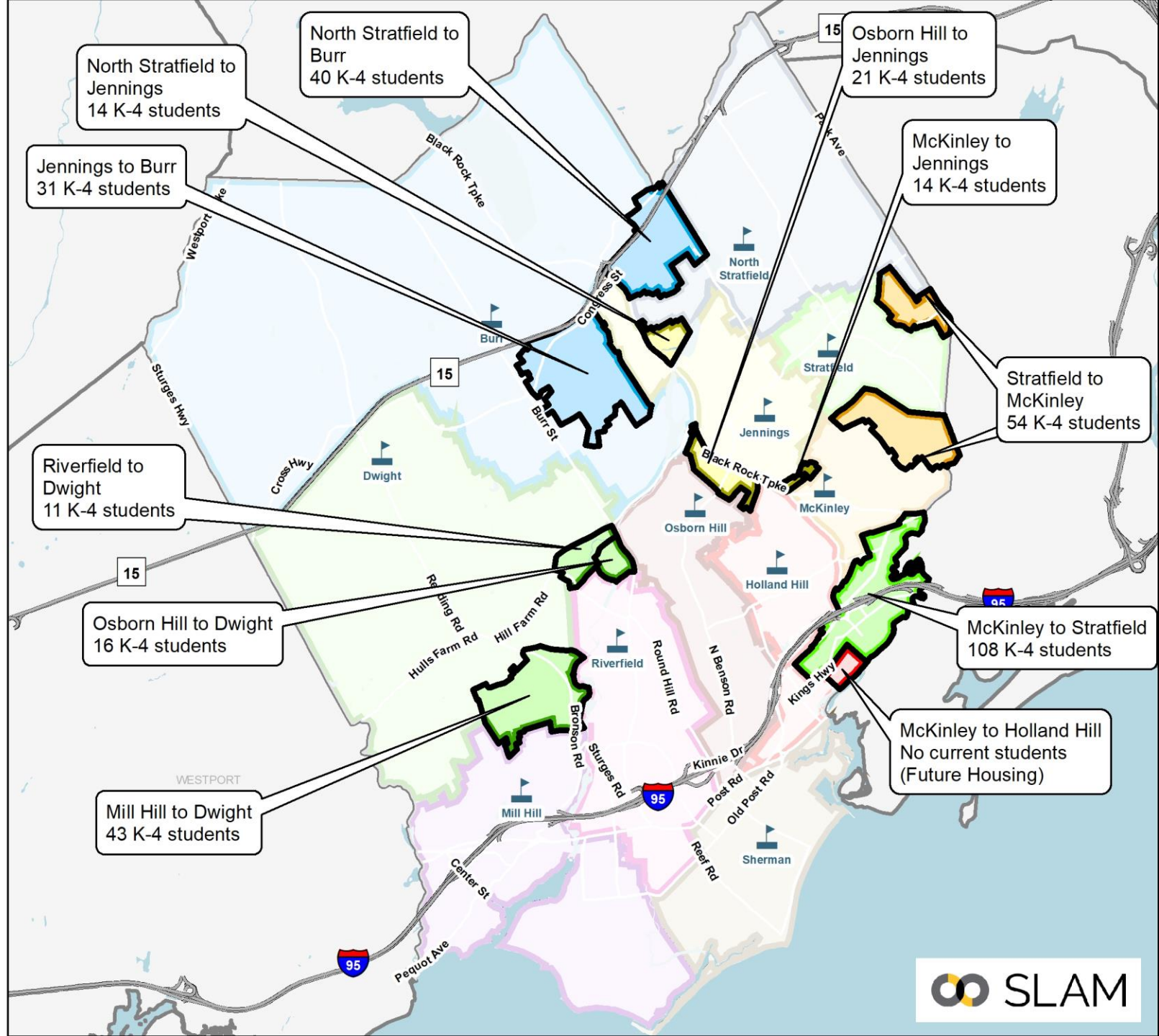
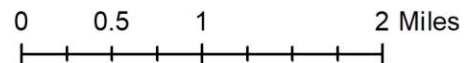
Redistricting Impacts (K-4):

- ~11% of elementary students
- Many small “pocket” areas moved

Greatest Share of Impacts to:

- McKinley: 30% of total impact
- Stratfield: 13% of total impact
- N. Stratfield 13% of total impact
- Mill Hill: 12% of total impact
- Osborn Hill: 10% of total impact

Note: All students were returned to their zoned schools





Scenario 5: Summary

- Maintains 11 elementary school alignment.
- Requires additions of specialized space to Jennings and Dwight as part of future renovation projects in order to help minimize impacts.
- All schools would have complied with the state racial balance law over the last seven years, although McKinley and Holland Hill would each exceed 20% deviation multiple years.
- Impacts ~12% of elementary students
- McKinley is underutilized – could support a districtwide program that provides greater enrollment and racial balance?
- Redistricting impacts to ~3% of middle school students. No High School impacts.
- Net impacts to ~3% of elementary walkers.

Objective	Description	Score
Address Racial Imbalance	McKinley and Holland Hill racially balanced, but exceed 20% in one or more years	Fair
Balance Utilization Across all Elementary Schools	Underutilized McKinley	Poor
Minimize Redistricting Impacts	12% of ES students 3% of MS students No HS impacts	Fair
Student Walker Impacts	Net impacts to ~3% of walkers. Some impacted walkers can walk to new schools.	Good

CONCEPTUAL BOUNDARIES FOR PLANNING PURPOSES ONLY

Scenario 5 Elementary Change Areas



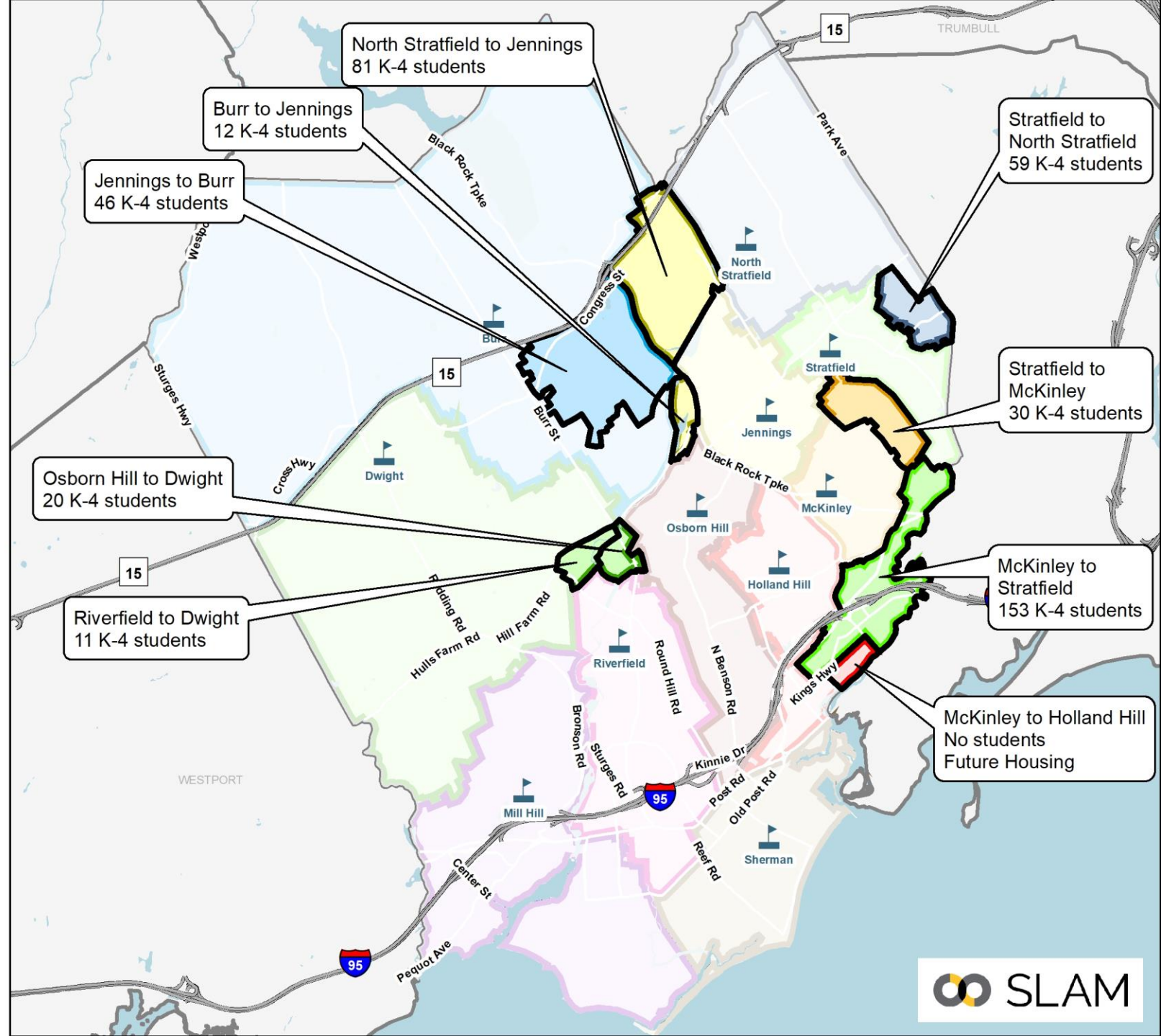
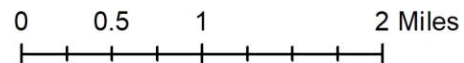
Redistricting Impacts (K-4):

- ~12% of elementary students
- Several small "pocket" areas moved

Greatest Share of Impacts to:

- McKinley: 34% of total impact
- N. Stratfield: 16% of total impact
- Jennings: 11% of total impact

Note: All students were returned to their zoned schools



CONCEPTUAL BOUNDARIES FOR PLANNING PURPOSES ONLY

Scenario 5 Elementary Districts

- | | |
|---|--|
|  Burr |  North Stratfield |
|  Dwight |  Osborn Hill |
|  Holland Hill |  Riverfield |
|  Jennings |  Roger Sherman |
|  McKinley |  Stratfield |
|  Mill Hill |  School Points |

