

10/27/2024 11:43:41 AM

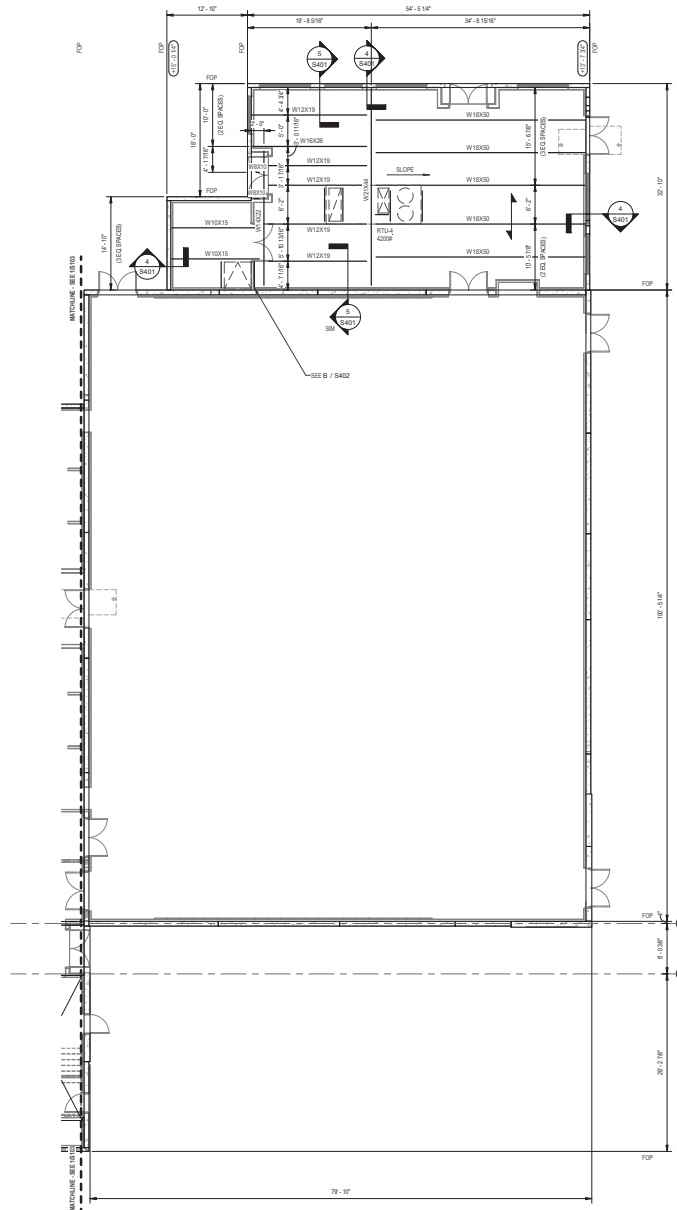
D

C

B

A

C:\Users\jason@musman.com\OneDrive\Bureau\Projects\2024\Stuart HS\Bldg\2D\Drawings\General\02_Partial2ndFloor.dwg



LEGEND

77-75 FISTEL ELEVATION - SEE PLAN

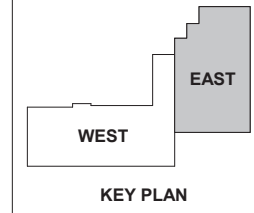
75-11 FISTEL ELEVATION - SEE PLAN


ROOF FRAMING PLAN NOTES

1. SEE PLAN FOR FISTEL ELEVATIONS. REFERENCE ELEVATION (+0.0) IS SET AT LEVEL 1 F.F.F. SEE CHG DRAWINGS.
2. TYPICAL ROOF SLOPING IS 1/2" TYPE B OR GAGE PAINTED ROOF DECK. INDICATED DECK SPAN DIRECTION. SEE NOTES ON SHEET S001 FOR DECK ATTACHMENT.
3. SEE SHEET S001 FOR GENERAL NOTES.
4. REFER TO ARCHITECTURAL, MECHANICAL, ELECTRICAL, PLUMBING AND DRAWINGS OF OTHER DISCIPLINES FOR LOCATIONS AND DIMENSIONS OF OPENINGS, DEPRESSIONS, AND OTHER NONSTRUCTURAL ITEMS. SEE DETAIL B / S402 FOR TYPICAL FRAMING AT ROOF OPENINGS.
5. PROVIDE EMBED IN TILT WALL PANEL PER EMBED SCHEDULE - REFER TO DETAIL G / S502.
6. PROVIDE BEAM POCKET IN TILT WALL PANEL - REFER TO DETAIL F / S402.
7. PROVIDE (1) ROW OF 1/2" LONG W/ BRIDGING WELDED TO THE BOTTOM FLANGE OF BEAMS & TOP FLANGE PROVIDE ADDITIONAL BRACING AT LOCATIONS SHOWN ON PLAN.

PARTIAL SECOND FLOOR FRAMING PLAN - EAST

1/8" = 1'-0"







610 N. Main Street
Greenville, SC 29601
P: 803.235.3255 | E: info@musmanarchitects.com

Mark A. Hudson
Professional Engineer

1505 C. Cleveland St., Greenville, SC 29607
O: 803.235.3255 | F: 803.235.3257
PROJECT # 24024



STATE OF SOUTH CAROLINA
No. 78331
Professional Engineer



TCCA HIGH SCHOOL
BUILDING
1400 SE COVE RD
STUART FLORIDA 34997

SHEET ISSUE:			
NO.	DATE	DESCRIPTION	BY
	10/27/2024	Initial Submission	

PRINCIPAL IN CHARGE:	RAM
PROJECT ARCHITECT:	RAM
DRAWN BY:	JAT

SHEET TITLE:
LOW ROOF FRAMING PLAN

SHEET NO.	PROJ. NO.
	022004

S104