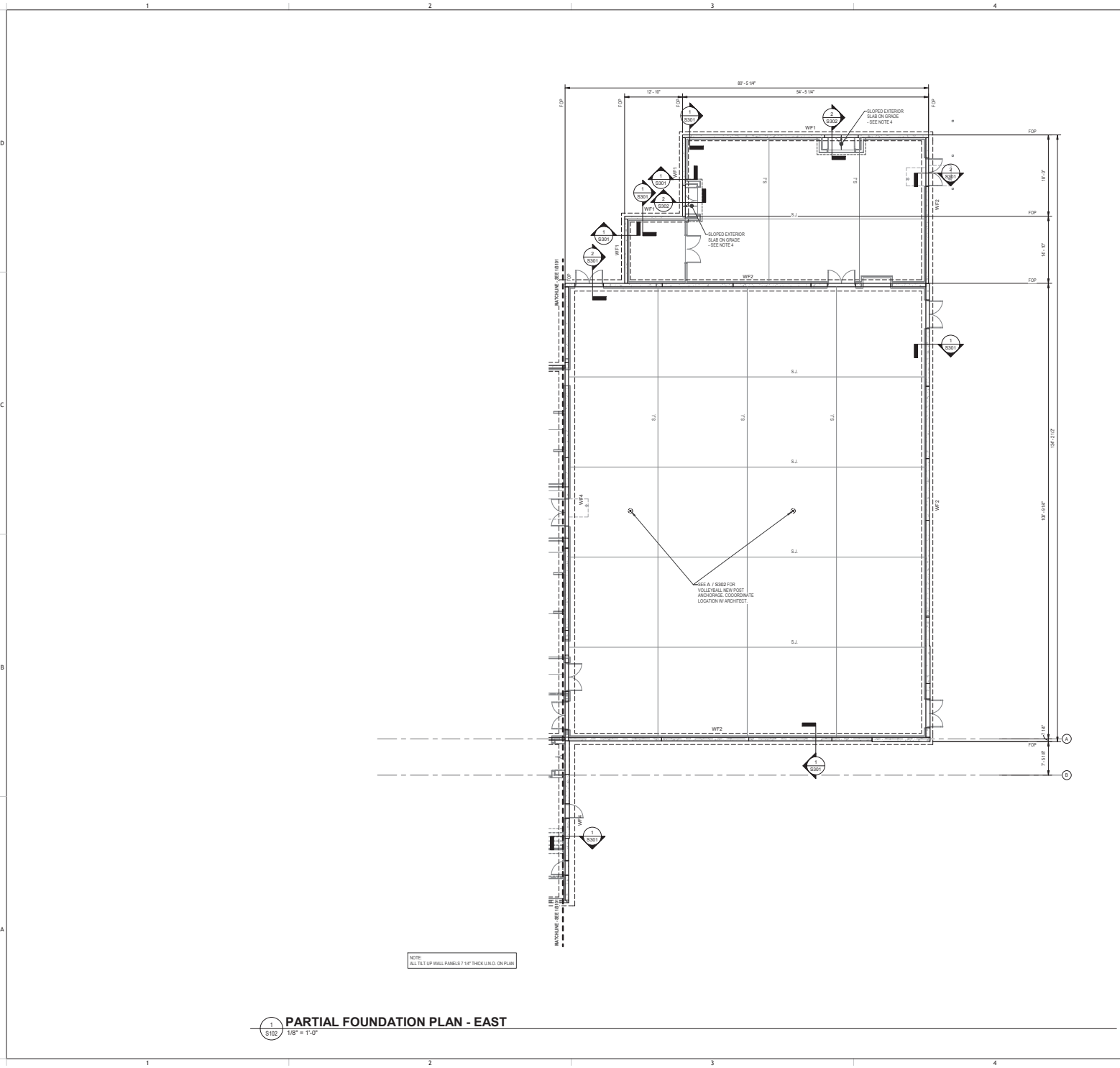


C:\Users\jasonhudson\Documents\2020\Stuarts\TRUST\CLASSICAL\Stuarts_TCCA_High_School_Plan\20200420.dwg
10/27/2020 11:04:30 AM



NOTE: ALL TILT UP WALL PANELS 7/8" THICK UNLESS NOTED OTHERWISE

1 PARTIAL FOUNDATION PLAN - EAST
S102 1/8" = 1'-0"

LEGEND

- FOOTING TYPE - SEE SCHEDULE
- TOP OF FOOTING ELEVATION
- COLUMN DESIGNATION
- PER MARK - SEE SCHEDULE
- STEP IN FOOTING - SEE B / S301

FOUNDATION PLAN NOTES

- SEE SHEET S301 FOR GENERAL NOTES & DESIGN CRITERIA.
- ELEVATIONS GIVEN ARE SET FROM REFERENCE ELEVATION. REFERENCE ELEVATION (+2.71) IS SET AT FINISHED FLOOR ELEV. SEE CIVIL DRAWINGS FOR ADDITIONAL INFORMATION.
- REFER TO ARCHITECTURAL, MECHANICAL, ELECTRICAL, PLUMBING, AND DRAWINGS OF OTHER DISCIPLINES FOR LOCATIONS AND DIMENSIONS OF OPENINGS, DIMENSIONS AND OTHER NON-STRUCTURAL ITEMS.
- TYPICAL SLAB ON GRADE IS 4" NORMAL WEIGHT CONCRETE REINFORCED W/ #4 - W/ 4" X 14" WWF OVER 10 MIL VAPOR BARRIER, OVER APPROVED SUBGRADE OVER APPROVED SUBGRADE. EXTERIOR SLAB ON GRADE IS 4" NORMAL WEIGHT CONCRETE REINFORCED W/ #3 @ 12" O.C. (EA. WAY). LOCATE REINFORCING 1-1/2" CLR FROM T/SUB.
- PROVIDE (2) #4 @ 6" IN TOP OF SLAB @ ALL RE-ENTRANT CORNERS NOT INTERFERING SLAB JOINT.
- LOCATE SLAB JOINTS @ 30" O.C. MAX. SLAB JOINTS SHALL BE LOCATED TO MAINTAIN A MAXIMUM PANEL ASPECT RATIO OF 1.5 TO 1.6. SLAB JOINTS SHALL BE CONSTRUCTED PER DETAIL.
- FOOTING STEPS IF APPLICABLE ARE SHOWN IN APPROXIMATE LOCATIONS ON PLAN. SEE B / S301 FOR FOOTING STEP DETAIL. CONTRACTOR SHALL FIELD VERIFY LOCATIONS & COORDINATE WITH PLAN TO MAINTAIN MINIMUM 1'-0" SOIL COVER OVER FOOTING.
- SEE F / S301 FOR COLUMN BASE PLATE AND ANCHORAGE DETAILS.
- THICKEN SLAB AT LOCATIONS OF STAIR POSTS AND STRINGERS. TYP. - SEE E / S301
- TYPICAL TOP OF FOOTING ELEVATION IS 2'-0" BELOW FINISHED FLOOR ELEVATION UNLESS NOTED OTHERWISE.
- STEEL STAIRS BY OTHERS. SEE NOTES ON S301. SUPPORT FOR STAIRS TO BE ANCHORED DIRECTLY TO TILT UP CONCRETE WALLS VIA POST INSTALLED ANCHORAGE UNLESS NOTED OTHERWISE.
- ALL COLUMNS TO HAVE BASE PLATE TYPE BPI UNLESS NOTED OTHERWISE.
- REFER TO ARCH AND MEP DRAWINGS FOR FLOOR DRAIN LOCATIONS.

FOOTING SCHEDULE

| TYPE | SIZE | THICKNESS | REINFORCING |
|------|---------------|-----------|-----------------|
| S301 | 5'-0" X 5'-0" | 1'-0" | (2) #4 EACH WAY |

WALL FOOTING SCHEDULE

| TYPE | SIZE | THICKNESS | REINFORCING |
|------|------------|-----------|------------------|
| WF1 | 2'-0" WIDE | 1'-4" | (2) #6 T88 CONT. |
| WF2 | 2'-0" WIDE | 1'-4" | (2) #6 T88 CONT. |
| WF3 | 2'-0" WIDE | 1'-4" | (2) #6 T88 CONT. |
| WF4 | 2'-0" WIDE | 1'-4" | (2) #6 T88 CONT. |

KEY PLAN

SHEET ISSUE:

| NO. | DATE | DESCRIPTION | BY |
|-----|------------|--------------------|-----|
| 1 | 10/27/2020 | ISSUED FOR PERMITS | JHD |

PRINCIPAL IN CHARGE: JHD
PROJECT ARCHITECT: JHD
DRAWN BY: JHD
CHKD BY: JHD

SHEET TITLE:
PARTIAL FOUNDATION PLAN - EAST

SHEET NO.: S102
PROJ. NO.: 022004

S102

MUSSMAN ARCHITECTS
Greenfield, SC 29617
P.O. Box 10105, Greenville, SC 29617
www.mussmannarchitects.com

Mark A. Hudson
Professional Engineer
1505 C. Cowles St., Greenville, SC 29607
C. 864.201.3805 • F. 864.203.5377
PROJECT # 202004

TREASURE COAST CLASSICAL ACADEMY

TCCA HIGH SCHOOL BUILDING
1400 SE COVE RD
STUART FLORIDA 34997