

FBC CHAPTER 10 - OCCUPANT LOADS

| ROOM/AREA | FBC TABLE 1004.1.2 | | AREA | FIXED SEATS | OCCUPANTS |
|------------------------|-----------------------------------|---------------|------------------|-------------|-------------|
| | FUNCTION OF SPACE | LOAD FACTOR | | | |
| FIRST FLOOR | | | | | |
| STORAGE | ACCESSORY STORAGE/MECHANICAL ROOM | 300 GROSS | 665 SF | | 6 |
| GYM | ASSEMBLY - CONCENTRATED | 7 NET | 6,369 SF | | 609 |
| BLEACHERS | ASSEMBLY - FRIED BENCH | 16 PER PERSON | | 300 | 308 |
| CAFETERIA | ASSEMBLY - UNCONCENTRATED | 15 NET | 1,636 SF | | 107 |
| BUSINESS | | | 2,227 SF | | 16 |
| CLASSROOM | EDUCATIONAL - CLASSROOM AREA | 150 GROSS | 2,424 SF | | 12 |
| VOCATIONAL | EDUCATIONAL - VOCATIONAL AREA | 50 NET | 962 SF | | 20 |
| LOCKERS | LOCKER ROOMS | 50 GROSS | 1,124 SF | | 24 |
| SECOND FLOOR | | | | | |
| STORAGE | ACCESSORY STORAGE/MECHANICAL ROOM | 300 GROSS | 277 SF | | 2 |
| CLASSROOM | EDUCATIONAL - CLASSROOM AREA | 20 NET | 6,369 SF | | 20 |
| BAND | EDUCATIONAL - VOCATIONAL AREA | 50 NET | 969 SF | | 20 |
| VOCATIONAL | EDUCATIONAL - VOCATIONAL AREA | 50 NET | 928 SF | | 17 |
| TOTAL OCCUPANTS | | | 23,992 SF | 300 | 1929 |

GENERAL NOTES

- LIFE SAFETY PLAN IS SHOWN FOR DEMONSTRATION OF CODE COMPLIANCE. REFER TO FLOOR PLANS FOR FURTHER INFORMATION.
- REFER TO FLOOR PLANS AND PARTITION TYPE SCHEDULES FOR WALL ASSEMBLY TYPES AND CONSTRUCTION.
- FIRE CABLE AND ALL ELECTRICAL CONDUIT PASSING THROUGH WALLS.
- REFER TO MECHANICAL AND PLUMBING DRAWINGS FOR SPECIAL DETAILS WHERE DUCTWORK AND PIPING PASS THROUGH WALLS. REFER TO ALL DETAILS FOR GENERAL FLOOR, ROOF, AND/OR STRUCTURAL RATING REQUIREMENTS AND RELEVANT PROPOSED PROTECTION SYSTEMS.

FIRE EXTINGUISHER NOTES

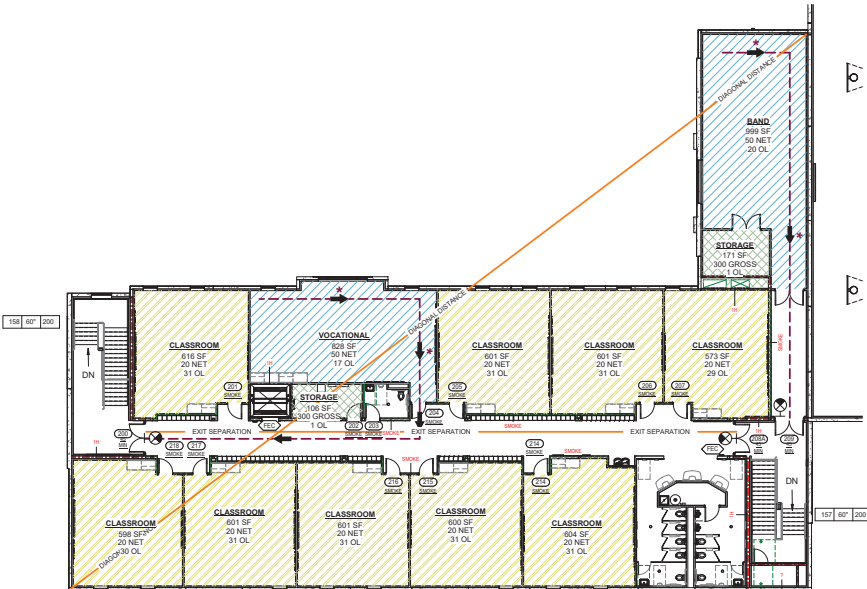
- THE CONTRACTOR SHALL PROVIDE AND COORDINATE FINAL PLACEMENT AND SIZING OF ALL FIRE EXTINGUISHERS WITH THE LOCAL FIRE MARSHAL.
- EXTINGUISHERS HAVING A WEIGHT OF LESS THAN 40 POUNDS SHALL BE INSTALLED SO THAT THE HANDLE OF THE EXTINGUISHER IS NOT MORE THAN 4 FEET ABOVE THE FLOOR. EXTINGUISHERS HAVING A WEIGHT OF MORE THAN 40 POUNDS SHALL BE INSTALLED SO THAT THE TOP OF THE EXTINGUISHER IS NOT OVER 3 FEET ABOVE THE FLOOR. CLEARANCE BETWEEN THE BOTTOM OF THE EXTINGUISHER AND THE FLOOR MUST BE AT LEAST 4 INCHES.
- EXTINGUISHERS SHALL BE PLACED IN A MANNER SUCH THAT THE OPERATING INSTRUCTIONS FACE OUTWARD. THE LOCATION OF EXTINGUISHERS SHALL BE CONSPICUOUSLY MARKED TO BE CLEARLY VISIBLE AT A DISTANCE OF 25 FEET.

FBC 1007 - ARRANGEMENT OF EXITS

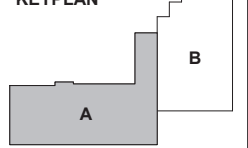
| FLOOR | DIAGONAL DISTANCE | DISTANCE APART MIN. ALLOWED | DISTANCE APART PROVIDED |
|--------------|-------------------|-----------------------------|-------------------------|
| CAFÉ | 61'-6" | 26'-0" | 34'-11" |
| FIRST FLOOR | 281'-9" | 87'-2" | 258'-0" |
| FIRST | 137'-2" | 42'-0" | 121'-0" |
| SECOND FLOOR | 160'-11" | 65'-4" | 153'-2" |

FBC 1017 - TRAVEL DISTANCE

| PATH | MAX TRAVEL PATH | | COMMON PATH OF TRAVEL | | COMMENT |
|------|-----------------|---------|-----------------------|---------|---------|
| | ACTUAL | MAX | ACTUAL | MAX | |
| 1A | 87'-9" | 252'-0" | 28'-0" | 100'-0" | |
| 1B | 152'-1" | 252'-0" | 64'-2" | 100'-0" | |
| 2A | 152'-1" | 252'-0" | 58'-2" | 100'-0" | |
| 2B | 67'-9" | 252'-0" | 91'-9" | 100'-0" | |



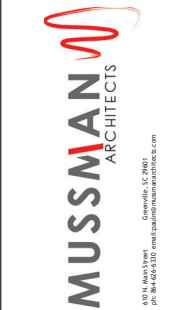
KEYPLAN



LIFE SAFETY LEGEND

- NAME** OCCUPANCY TAG
- 150 SF GROSS/NET # Occupants OL
- FIRE EXTINGUISHER IN CABINET
- FIRE EXTINGUISHER
- LONGEST EXIT PATH AND DIRECTION
- (* INDICATES COMMON PATH OF TRAVEL)
- EXIT PATH NUMBER
- EXIT SIGN
- 2 OR 3 HOUR FIRE WALL
- 1, 2, OR 3 HOUR FIRE BARRIER
- SMOKE BARRIER
- FIRE PARTITION
- SMOKE PARTITION
- ACTUAL OCCUPANT LOAD PER EXIT
- OCCUPANTS ALLOWED PER EXIT
- EXIT WIDTH

SECOND FLOOR LIFE SAFETY PLAN



TCCA HIGH SCHOOL BUILDING
1400 SE COVE RD
STUART FLORIDA 34997

SHEET ISSUE:
NO. DATE DESCRIPTION BY AC

PREPARED BY: PM
PROJECT ARCHITECT: MC
DRAWN BY: MC

SHEET TITLE:
LIFE SAFETY PLAN - LEVEL 2

SHEET NO. PROJ. NO.
LS002 022004