

LIGHTING NOTES

- 1. CONTROL EXTERIOR LIGHTING AND ILLUMINATED SIGNAGE VIA PHOTOCELL AND 365-DAY ASTRONOMICAL TIME CLOCK. PHOTOCELL AND TIME CLOCK SHALL BE FAI "ON" TYPE.
- 2. ALL EXIT SIGNS SHALL BE POWERED FROM ADJACENT LIGHTING CIRCUIT AS SHOWN ON LIGHTING CIRCUIT PLAN.
- 3. CIRCUIT EXIT SIGNS, NIGHT LIGHTS, AND EMERGENCY BATTERIES AHEAD OF ALL SWITCHES/CONTROLS TIMELOCK.
- 4. ELECTRICAL CONTRACTOR IS RESPONSIBLE TO ENSURE THE ADJUSTABILITY OF ALL DIRECTIONAL FIXTURES AFTER INSTALLATION AND SHALL ASK THE FIXTURES PER DIRECTION FROM ARCHITECT/OWNER.
- 5. ALL ADJACENT WALL SWITCHES SHALL BE GANGED TOGETHER IN A SINGLE BOX WITH A SINGLE FACEPLATE.
- 6. HEIGHT OF ALL SWITCHES, PULLS, AND CONTROLS SHALL BE ACCESSIBLE PER A.D.A. MAXIMUM #9 AFF.
- 7. CONTRACTOR TO PROGRAM WALL OCCUPANCY SWITCHES PER OWNER REQUIREMENTS.
- 8. CEILING MOUNTED VACANCY SENSORS ARE INDICATED FOR INTENT ONLY. CONTRACTOR TO GET FACTORY LAYOUT TO GUARANTEE COVERAGE OF INTENDED AREAS.
- 9. D.Z.#(S) = DAYLIGHT ZONE (#).
- 10. REFER TO LIGHTING FIXTURE SCHEDULE / SHEET E201.
- 11. SWITCHES FOR ALL CLASSROOMS SHALL BE PROGRAMMED TO DIM LIGHTS TO 9 PERCENT, 50 PERCENT, AND 100 PERCENT, CONFIRM PREFERENCE SETTING WITH OWNER.

OCCUPANCY SENSOR NOTES

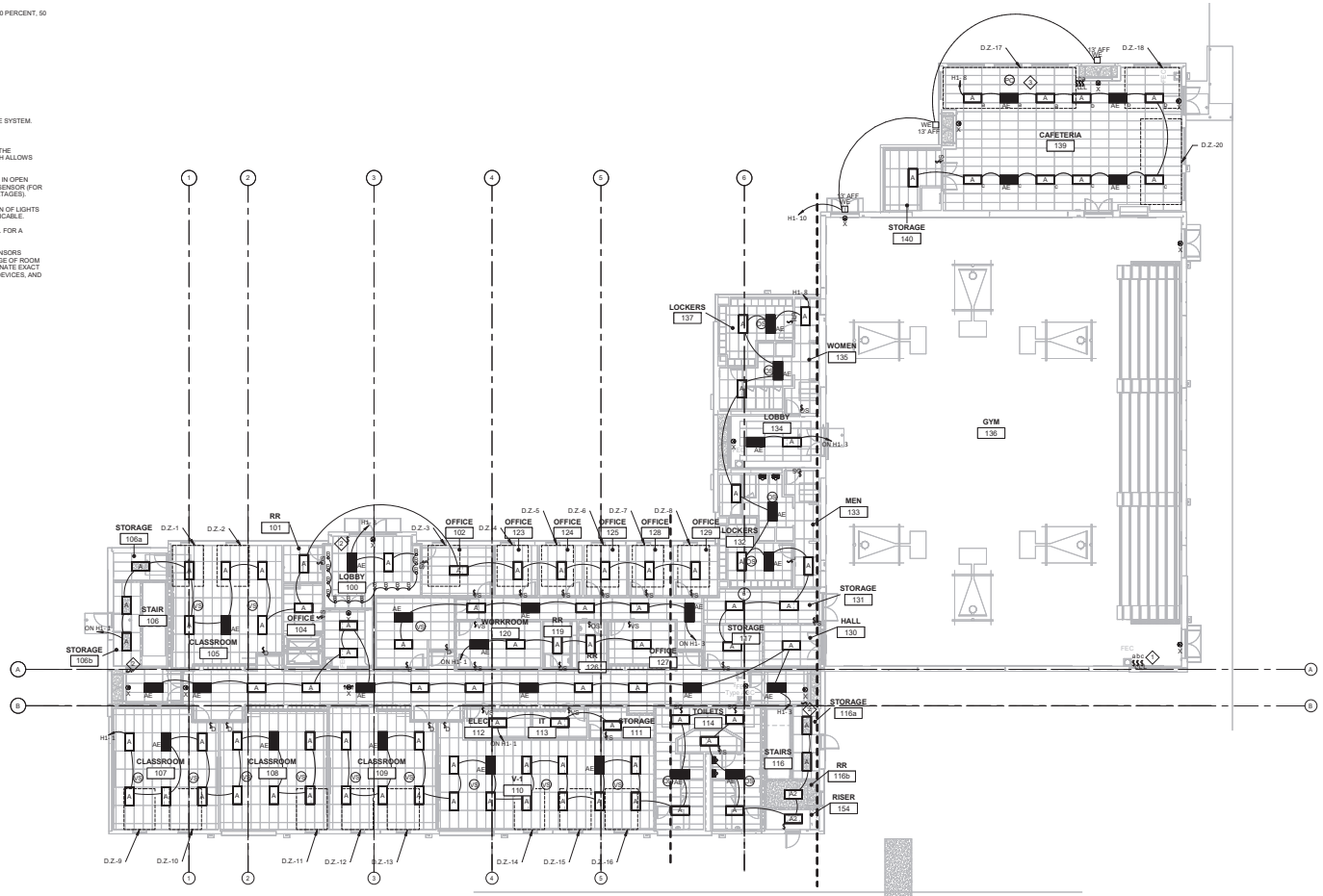
- 1. COORDINATE QUANTITY AND LOCATION OF SENSORS AND POWER PACKS WITH MANUFACTURER'S FACTORY REPRESENTATIVE FOR A COMPLETE AND OPERABLE SYSTEM.
- 2. PROVIDE SUBMITTAL LAYOUT DRAWINGS FROM SUCCESSFUL BIDDER.
- 3. IN GENERAL, POWER PACKS ARE TO BE INSTALLED AHEAD OF (IN SERIES WITH) THE SWITCHES. THE SENSORS ESSENTIALLY ENABLE THE CIRCUIT, WHILE THE SWITCH ALLOWS FOR MANUAL OFF PRIOR TO SENSORS TURNING LIGHT OFF.
- 4. POWER PACKS CAN RECEIVE INPUTS FROM MULTIPLE SENSORS (FOR EXAMPLE, IN OPEN AREAS). HOWEVER, MULTIPLE POWER PACKS CAN BE CONTROLLED BY A SINGLE SENSOR (FOR EXAMPLE, IN A CONFERENCE ROOM WHERE LIGHTS ARE AT TWO DIFFERENT VOLTAGES).
- 5. ALL SENSORS SHOULD BE SET AT THE CODE MAXIMUM SETTING FOR SHUTDOWN OF LIGHTS UNLESS NOTED OTHERWISE. DISABLE AUTO ADAPTING TIME DELAY WHERE APPLICABLE.
- 6. PROVIDE ALL POWER PACKS, LOW-VOLTAGE WIRING, ADDITIONAL DEVICES, ETC. FOR A COMPLETE AND WORKING SYSTEM.
- 7. CONSULT FACTORY FOR RECOMMENDED LAYOUT OF ALL CEILING MOUNTED SENSORS SHOWN ON PLAN. SENSORS SHALL BE PLACED TO PROVIDE COMPLETE COVERAGE OF ROOM SERVED. SENSORS SHALL BE PLACED IN THE CENTER OF CEILING TILES. COORDINATE EXACT LOCATIONS BASED ON FINAL LAYOUT OF DIFFUSERS, SPRINKLERS, FIRE ALARM DEVICES, AND OTHER CEILING DEVICES.

LIGHTING FIXTURE SCHEDULE

TYPE	MANUFACTURER	PART NUMBER	DESCRIPTION	AMP	WATTS	VOLTS
A	HE WILLIAMS	DFP-2-24-845-8-4115-10-50-20-20-20-20-20	2'X4' RECESSED TRIANGLE	1.00	50W	277V
B	HE WILLIAMS	DFP-2-24-845-8-4115-10-50-20-20-20-20-20	2'X4' RECESSED TRIANGLE WITH BATTERY BACK UP	1.00	50W	277V
C	HE WILLIAMS	DFP-2-24-845-8-4115-10-50-20-20-20-20-20	2'X4' RECESSED TRIANGLE WITH BATTERY BACK UP	1.00	50W	277V
D	HE WILLIAMS	DFP-2-24-845-8-4115-10-50-20-20-20-20-20	2'X4' RECESSED TRIANGLE WITH BATTERY BACK UP	1.00	50W	277V
E	HE WILLIAMS	DFP-2-24-845-8-4115-10-50-20-20-20-20-20	2'X4' RECESSED TRIANGLE WITH BATTERY BACK UP	1.00	50W	277V
F	HE WILLIAMS	DFP-2-24-845-8-4115-10-50-20-20-20-20-20	2'X4' RECESSED TRIANGLE WITH BATTERY BACK UP	1.00	50W	277V
G	HE WILLIAMS	DFP-2-24-845-8-4115-10-50-20-20-20-20-20	2'X4' RECESSED TRIANGLE WITH BATTERY BACK UP	1.00	50W	277V
H	HE WILLIAMS	DFP-2-24-845-8-4115-10-50-20-20-20-20-20	2'X4' RECESSED TRIANGLE WITH BATTERY BACK UP	1.00	50W	277V
I	HE WILLIAMS	DFP-2-24-845-8-4115-10-50-20-20-20-20-20	2'X4' RECESSED TRIANGLE WITH BATTERY BACK UP	1.00	50W	277V
J	HE WILLIAMS	DFP-2-24-845-8-4115-10-50-20-20-20-20-20	2'X4' RECESSED TRIANGLE WITH BATTERY BACK UP	1.00	50W	277V
K	HE WILLIAMS	DFP-2-24-845-8-4115-10-50-20-20-20-20-20	2'X4' RECESSED TRIANGLE WITH BATTERY BACK UP	1.00	50W	277V
L	HE WILLIAMS	DFP-2-24-845-8-4115-10-50-20-20-20-20-20	2'X4' RECESSED TRIANGLE WITH BATTERY BACK UP	1.00	50W	277V
M	HE WILLIAMS	DFP-2-24-845-8-4115-10-50-20-20-20-20-20	2'X4' RECESSED TRIANGLE WITH BATTERY BACK UP	1.00	50W	277V
N	HE WILLIAMS	DFP-2-24-845-8-4115-10-50-20-20-20-20-20	2'X4' RECESSED TRIANGLE WITH BATTERY BACK UP	1.00	50W	277V
O	HE WILLIAMS	DFP-2-24-845-8-4115-10-50-20-20-20-20-20	2'X4' RECESSED TRIANGLE WITH BATTERY BACK UP	1.00	50W	277V
P	HE WILLIAMS	DFP-2-24-845-8-4115-10-50-20-20-20-20-20	2'X4' RECESSED TRIANGLE WITH BATTERY BACK UP	1.00	50W	277V
Q	HE WILLIAMS	DFP-2-24-845-8-4115-10-50-20-20-20-20-20	2'X4' RECESSED TRIANGLE WITH BATTERY BACK UP	1.00	50W	277V
R	HE WILLIAMS	DFP-2-24-845-8-4115-10-50-20-20-20-20-20	2'X4' RECESSED TRIANGLE WITH BATTERY BACK UP	1.00	50W	277V
S	HE WILLIAMS	DFP-2-24-845-8-4115-10-50-20-20-20-20-20	2'X4' RECESSED TRIANGLE WITH BATTERY BACK UP	1.00	50W	277V
T	HE WILLIAMS	DFP-2-24-845-8-4115-10-50-20-20-20-20-20	2'X4' RECESSED TRIANGLE WITH BATTERY BACK UP	1.00	50W	277V
U	HE WILLIAMS	DFP-2-24-845-8-4115-10-50-20-20-20-20-20	2'X4' RECESSED TRIANGLE WITH BATTERY BACK UP	1.00	50W	277V
V	HE WILLIAMS	DFP-2-24-845-8-4115-10-50-20-20-20-20-20	2'X4' RECESSED TRIANGLE WITH BATTERY BACK UP	1.00	50W	277V
W	HE WILLIAMS	DFP-2-24-845-8-4115-10-50-20-20-20-20-20	2'X4' RECESSED TRIANGLE WITH BATTERY BACK UP	1.00	50W	277V
X	HE WILLIAMS	DFP-2-24-845-8-4115-10-50-20-20-20-20-20	2'X4' RECESSED TRIANGLE WITH BATTERY BACK UP	1.00	50W	277V
Y	HE WILLIAMS	DFP-2-24-845-8-4115-10-50-20-20-20-20-20	2'X4' RECESSED TRIANGLE WITH BATTERY BACK UP	1.00	50W	277V
Z	HE WILLIAMS	DFP-2-24-845-8-4115-10-50-20-20-20-20-20	2'X4' RECESSED TRIANGLE WITH BATTERY BACK UP	1.00	50W	277V

NOTE BY SYMBOL

- ◆ LIGHT SWITCHES CONTROL GYM LIGHTS. REFER TO SHEET E202 FOR MORE INFORMATION.
- ◆ 3-HOUR MAX OVERRIDE SWITCH FOR TIMECLOCK. TIMECLOCK TO CONTROL ALL STAIRS, LOBBY, AND HALLS/CORRIDORS. CONFIRM LOCATION WITH OWNER.
- ◆ DAYLIGHT ZONE. PROVIDE DAYLIGHT HARVESTING FOR EACH DAYLIGHT ZONE PER FBC.



LIGHTING PLAN - LEVEL 1
3/12 - 1/1"



SHEET ISSUE:

NO.	DATE	DESCRIPTION	BY
1			

DESIGNED BY: []
CHECKED BY: []
DATE: []

PROJECT NO. CHARGE: []
PROJECT ARCHITECT: []
DRAWN BY: []
AUTHOR: []

SHEET TITLE:
LIGHTING PLAN - LEVEL 1