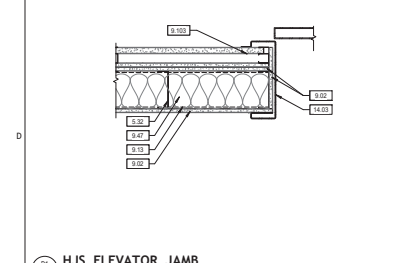
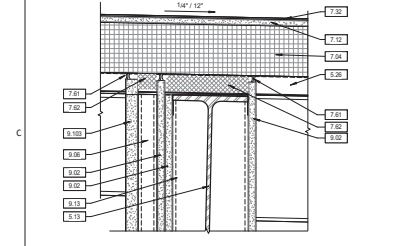


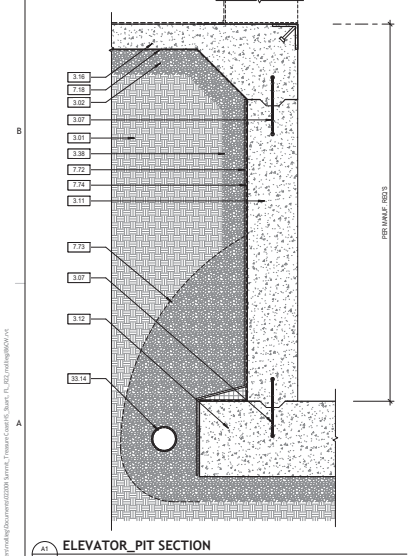
43  
A720  
HJS ELEVATOR HEAD  
1 1/2" = 1'-0"



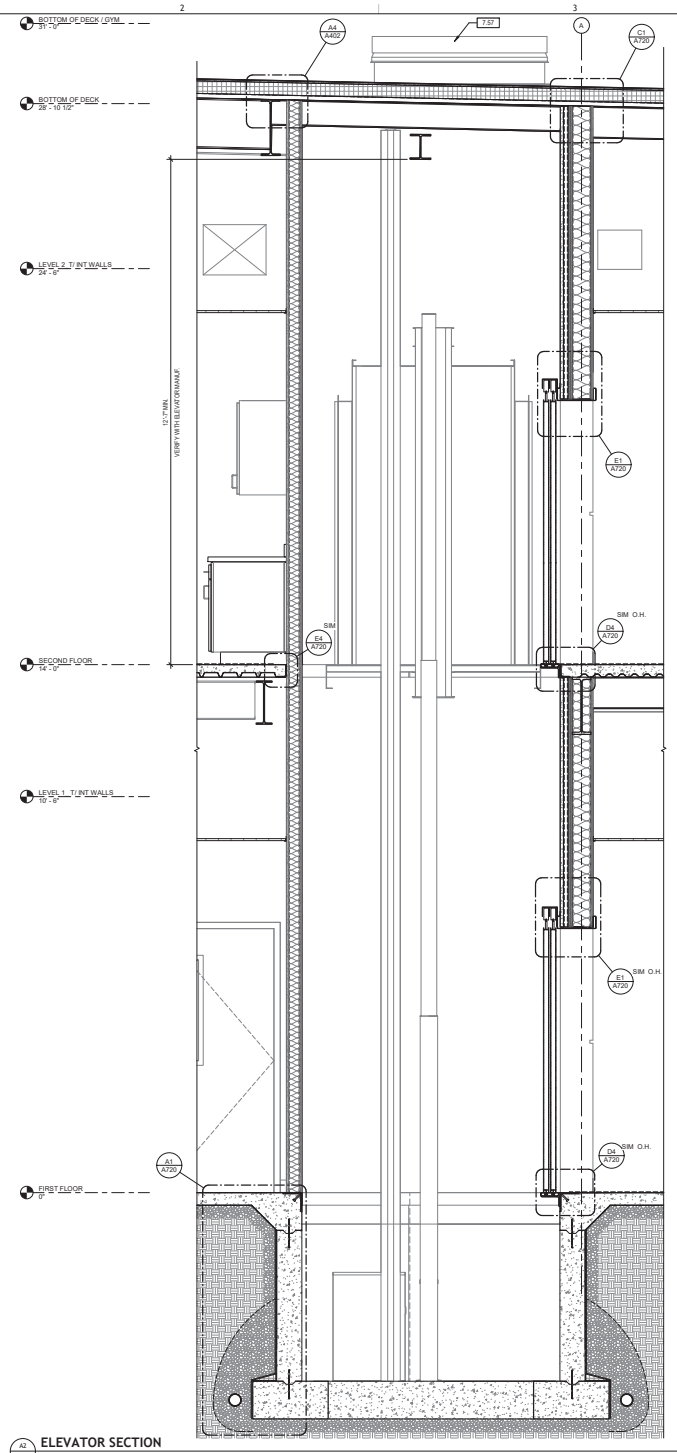
24  
A720  
HJS ELEVATOR JAMB  
1 1/2" = 1'-0"



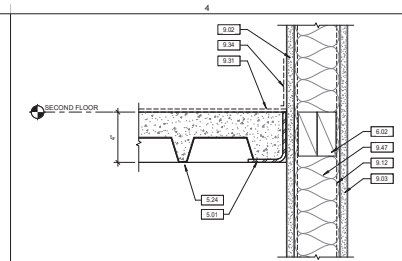
41  
A720  
ROOF @ ELEVATOR SHAFT\_02  
3" = 1'-0"



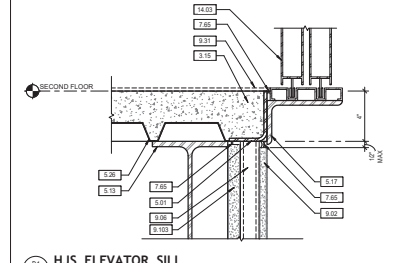
41  
A720  
ELEVATOR PIT SECTION  
1 1/2" = 1'-0"



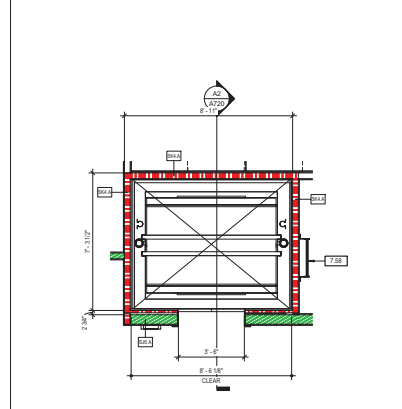
42  
A720  
ELEVATOR SECTION  
3/4" = 1'-0"



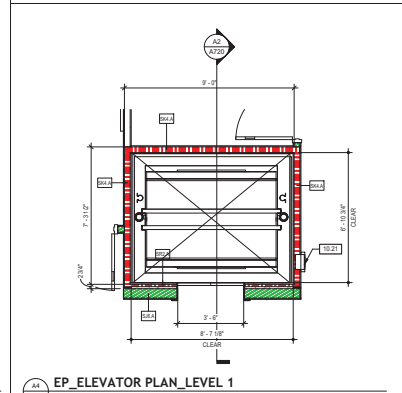
44  
A720  
ELEVATOR FLOOR CONNECTION  
3" = 1'-0"



24  
A720  
HJS ELEVATOR SILL  
3" = 1'-0"

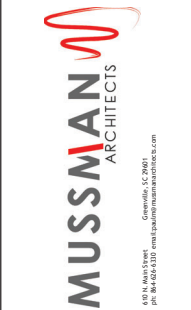


44  
A720  
EP ELEVATOR PLAN LEVEL 2  
3/8" = 1'-0"



44  
A720  
EP ELEVATOR PLAN LEVEL 1  
3/8" = 1'-0"

- ### DRAWING NOTES
- 3.01 COMPACTED FILL. REFER TO STRUCTURAL DRAWINGS.
  - 3.02 APPROVED SUB-BASE LAYER. REFER TO STRUCTURAL DRAWINGS.
  - 3.03 WATER STOP.
  - 3.10 CAST-IN-PLACE CONCRETE. REFER TO STRUCTURAL DRAWINGS.
  - 3.12 CAST-IN-PLACE CONCRETE FOOTING. REFER TO STRUCTURAL DRAWINGS FOR SIZE, TYPE OF REINFORCEMENT AND DEPTH.
  - 3.15 CAST-IN-PLACE CONCRETE SLAB ON GRADE, REINFORCED. REFER TO STRUCTURAL DRAWINGS.
  - 3.16 THICKENED CONCRETE SLAB. REFER TO STRUCTURAL DRAWINGS.
  - 3.38 COMPACTED STONE LAYER. REFER TO STRUCTURAL DRAWINGS.
  - 5.01 METAL FASTENER.
  - 5.13 METAL STRUCTURAL BEAM. REFER TO STRUCTURAL DRAWINGS.
  - 5.17 METAL ANGLE. REFER TO STRUCTURAL DRAWINGS.
  - 5.24 METAL FLOOR DECKING. REFER TO STRUCTURAL DRAWINGS.
  - 5.26 METAL ROOF DECKING. REFER TO STRUCTURAL DRAWINGS.
  - 5.30 STRUCTURAL METAL STUD FRAMING SYSTEM. REFER TO STRUCTURAL DRAWINGS.
  - 6.02 PRESURE TREATED WOOD BLOCKING AS REQUIRED.
  - 7.04 RIGID INSULATION. REFER TO SPECIFICATIONS FOR R-VALUE.
  - 7.12 COVER BOARD. INITIAL PER MANUFACTURER'S INSTRUCTIONS.
  - 7.18 VAPOR BARRIER.
  - 7.20 SINGLE PLY ROOFING MEMBRANE.
  - 7.57 ROOF HATCH, INSULATED. PROVIDE INTERIOR SHEET METAL SKIRT AND EXTENDIBLE SAFETY POST. REFER TO SPECIFICATIONS.
  - 7.58 METAL ROOF HATCH ACCESS LADDER. PROVIDE BLOCKING AS REQUIRED.
  - 7.61 INTUMESCENT FIREPROOFING CAULK AT ALL PENETRATIONS IN FIRE RATED ASSEMBLY.
  - 7.62 INSTALL FIRE STOPPING MATERIAL IN CONCEALED SPACES.
  - 7.65 SEALANT. CONTINUOUS BEAD.
  - 7.72 DRAINAGE MAT.
  - 7.75 FILTER FABRIC.
  - 7.74 BITUMINOUS WATERPROOFING.
  - 8.02 5/8" GYPSUM WALL BOARD.
  - 8.03 5/8" TYPE-X GYPSUM WALL BOARD.
  - 8.06 SHAP LINDER SYSTEM.
  - 8.12 3.5" METAL STUD FRAMING SYSTEM.
  - 8.13 6" METAL STUD FRAMING SYSTEM.
  - 8.21 SCHEDULED FLOOR FINISH.
  - 8.34 BASE.
  - 8.47 ADDITIONAL SOUND ATTENUATION BLANKET.
  - 8.53 1" TYPE-X GYPSUM WALL BOARD. REFER TO SPECIFICATIONS.
  - 10.21 FIRE EXTINGUISHER CABINET. REFER TO SPECIFICATIONS.
  - 14.03 ELEVATOR CAB DOOR & FRAME BY ELEVATOR MANUFACTURER.
  - 14.04 ELEVATOR HOIST WAY DOOR BY ELEVATOR MANUFACTURER. NOTES.
  - 33.14 4" PERFORATED PIPE IF REQUIRED. CONNECT TO STORM WATER SYSTEM. REFER TO CIVIL DRAWING.



TCCA HIGH SCHOOL  
BUILDING  
1400 SE COVE RD  
STUART FLORIDA 34997

NO.	DATE	DESCRIPTION	BY
4	10/2/23	Project Schedule	ML

PERSONAL IN CHARGE	PM

SHEET TITLE:	
ELEVATOR PLANS, SECTIONS, & DETAILS	

SHEET NO.	PROJ. NO.
	022004

A720