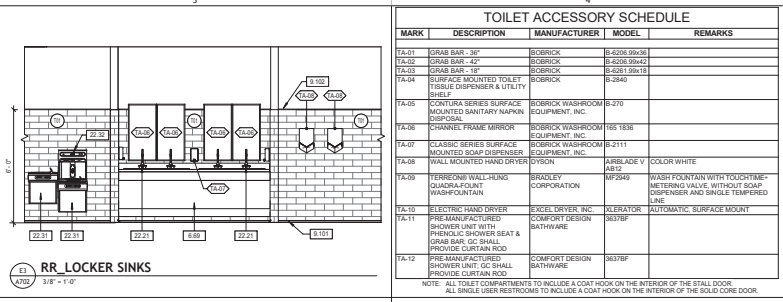
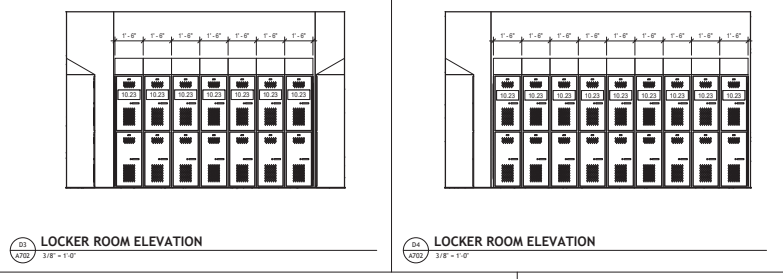


EP_LOCKER ROOMS
 A1
 ATD 3/8" = 1'-0"

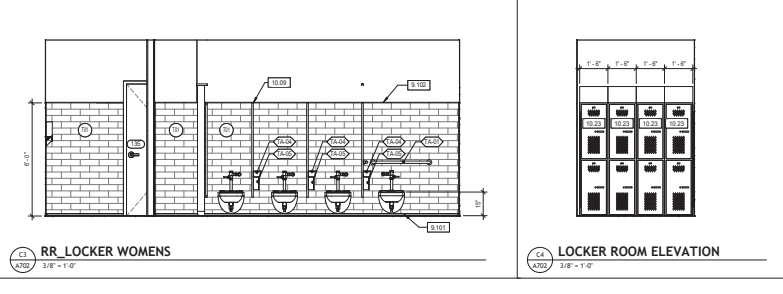


RR_LOCKER SINKS
 A1
 ATD 3/8" = 1'-0"



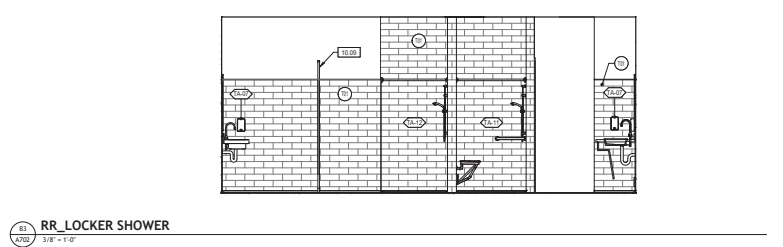
LOCKER ROOM ELEVATION
 A1
 ATD 3/8" = 1'-0"

LOCKER ROOM ELEVATION
 A1
 ATD 3/8" = 1'-0"

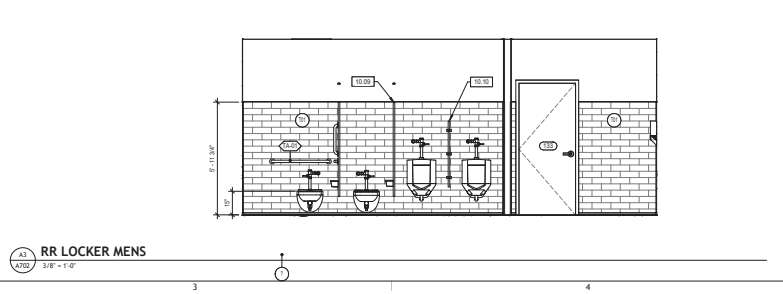


RR_LOCKER WOMENS
 A1
 ATD 3/8" = 1'-0"

LOCKER ROOM ELEVATION
 A1
 ATD 3/8" = 1'-0"



RR_LOCKER SHOWER
 A1
 ATD 3/8" = 1'-0"



RR_LOCKER MENS
 A1
 ATD 3/8" = 1'-0"

TOILET ACCESSORY SCHEDULE				
MARK	DESCRIPTION	MANUFACTURER	MODEL	REMARKS
TA-01	GRAB BAR - 36"	BOBRICK	B-5206 99x36	
TA-02	GRAB BAR - 42"	BOBRICK	B-5206 99x42	
TA-03	GRAB BAR - 18"	BOBRICK	B-4261 99x18	
TA-04	SURFACE MOUNTED TOILET TISSUE DISPENSER & UTILITY SINK	BOBRICK	B-2640	
TA-05	COATURA SERIES SURFACE MOUNTED SANITARY WIPERIN DISPOSAL	BOBRICK WASHROOM EQUIPMENT, INC.	B-3270	
TA-06	CHARMEE PROBE MIRROR	BOBRICK WASHROOM EQUIPMENT, INC.	TES-1836	
TA-07	CLASSIC SERIES SURFACE MOUNTED SOAP DISPENSER	BOBRICK WASHROOM EQUIPMENT, INC.	BP-2111	
TA-08	WALL MOUNTED HAND DRYER	BYRON	BY-1000	COLOR WHITE
TA-09	TERROSON WALL-HUNG QUADROMOUNT WASH-FOUNTAIN	BRADLEY CORPORATION	MP249	WASH FOUNTAIN WITH TOUCHTIME-METERING VALVE, WITHOUT SOAP DISPENSER AND SINGLE TEMPERED LINE.
TA-10	ELECTRIC HAND DRYER	EXCEL DRYER, INC.	ALDATOR	AUTOMATIC, SURFACE MOUNT
TA-11	PRE-MANUFACTURED SHOWER UNIT, GC, SHALL PROVIDE CURTAIN ROD	COMFORT DESIGN BATHWARE	SD376P	
TA-12	PRE-MANUFACTURED SHOWER UNIT, GC, SHALL PROVIDE CURTAIN ROD	COMFORT DESIGN BATHWARE	SD376P	

NOTE: ALL TOILET COMPARTMENTS TO INCLUDE A COAT HOOK ON THE INTERIOR OF THE STALL DOOR. ALL SINGLE USER RESTROOMS TO INCLUDE A COAT HOOK ON THE INTERIOR OF THE SOLID CORE DOOR.

- GENERAL NOTES**
- DO NOT SCALE ELEVATIONS. FOR MOUNTING HEIGHTS AND CLEARANCES REFER TO THE TYPICAL MOUNTING HEIGHTS AND CLEARANCES SHEET, 007. FOR MOUNTING HEIGHTS OF ALL FIXTURES AND ACCESSORIES.
 - REFER TO PLUMBING DRAWINGS FOR ALL PLUMBING FIXTURE SPECIFICATIONS.
 - ALL TOILET ACCESSORIES AND FIXTURES SHALL BE INSTALLED TO COMPLY WITH CURRENT ICC/ANSI 117.1 ACCESSIBILITY CODE REQUIREMENTS.
- DRAWING NOTES**
- ACCESSIBLE BINK BASE SKIRT
 - ALUMINUM CORNER TRIM REFER TO SPECIFICATIONS
 - ALUMINUM CORNER TRIM REFER TO SPECIFICATIONS
 - TOILET COMPARTMENT: REFER TO SPECIFICATIONS
 - URINAL SCREENS, REFER TO SPECIFICATIONS
 - URINAL, REFER TO PLUMBING DRAWINGS
 - PREFINISHED METAL LOCKERS, REFER TO SPECIFICATIONS
 - FURNITURE BY OTHERS, N.I.C.
 - FLOOR SCAN, REFER TO PLUMBING DRAWINGS
 - WATER CLOSET, REFER TO PLUMBING DRAWINGS
 - URINAL, REFER TO PLUMBING DRAWINGS
 - LAUVATORY, PROJECT UNDESIRABLE WITH HEAVY DUTY COATING, REFER TO PLUMBING DRAWINGS
 - WATER COOLER, REFER TO PLUMBING DRAWINGS
 - BOTTLE FILLER, REFER TO PLUMBING DRAWINGS

MUSSMAN ARCHITECTS

405 N. WALKER STREET
 SUITE 100
 STUART, FLORIDA 34997
 TEL: 888.343.2225 FAX: 888.343.2225
 www.mussmanarchitects.com

DATE: 08/27/2022

TCCA HIGH SCHOOL BUILDING
 1400 SE COVE RD
 STUART FLORIDA 34997

SHEET ISSUE:

NO.	DATE	DESCRIPTION	BY
1	08/22	Permit Submittal	AL

PROJECT IN CHARGE: PM
 PROJECT ARCHITECT: RS
 DRAWING: MEC
 SHEET: 01

SHEET TITLE:
**RESTROOM PLANS,
 ELEVATIONS, &
 SCHEDULE**

SHEET NO. PROJ. NO.
A702 022004