



**TCCA HIGH SCHOOL**  
 BUILDING  
 1400 SE COVE RD  
 STUART FLORIDA 34997

**SHEET DATE:**  
 11/15/2018  
 11/15/2018  
 11/15/2018

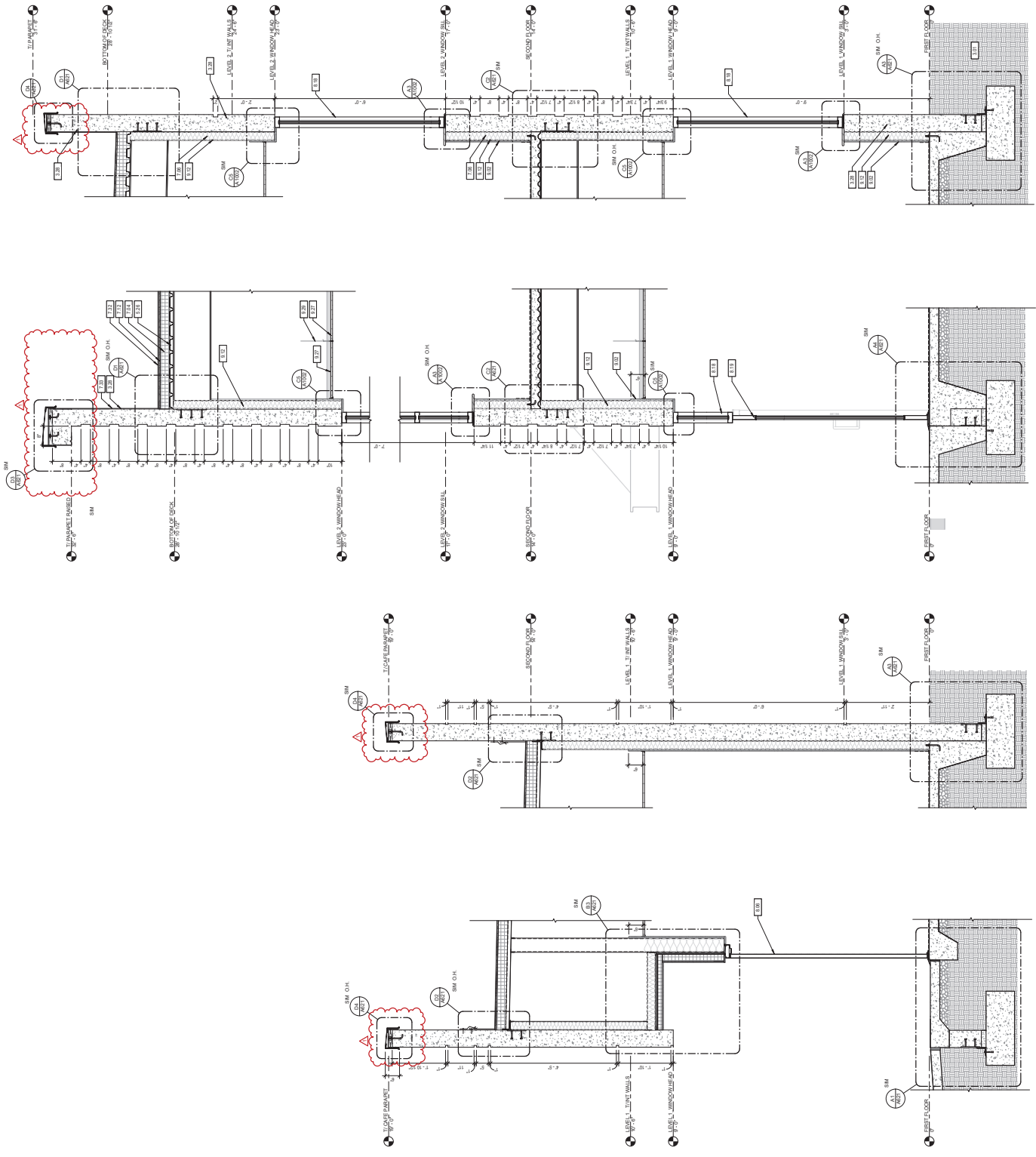
**REVISIONS:**  
 1  
 2  
 3

**PROJECT NAME:**  
 TCCA HIGH SCHOOL  
 BUILDING

**SHEET NO.:**  
 02/2004

**A613**

- DRAWING NOTES**
- 317 CONTRACTOR SHALL REFER TO STRUCTURAL DRAWINGS
  - 318 ALL CONCRETE WALLS REFER TO ARCHITECTURAL
  - 319 FOR TYPE AND FINISH REQUIREMENTS
  - 320 FINISH SHALL BE AS SHOWN
  - 321 ROOF INSULATION REFER TO SPECIFICATIONS OVER VALUE
  - 322 COVER BOARD INSTALL PER MANUFACTURER'S INSTRUCTIONS
  - 323 COVER BOARD SHALL BE FULLY ADHERED TO SUBSTRATE
  - 324 INSULATION SHALL BE FULLY ADHERED TO SUBSTRATE
  - 325 INSULATION SHALL BE FULLY ADHERED TO SUBSTRATE
  - 326 INSULATION SHALL BE FULLY ADHERED TO SUBSTRATE
  - 327 INSULATION SHALL BE FULLY ADHERED TO SUBSTRATE
  - 328 INSULATION SHALL BE FULLY ADHERED TO SUBSTRATE
  - 329 INSULATION SHALL BE FULLY ADHERED TO SUBSTRATE
  - 330 INSULATION SHALL BE FULLY ADHERED TO SUBSTRATE
  - 331 INSULATION SHALL BE FULLY ADHERED TO SUBSTRATE
  - 332 INSULATION SHALL BE FULLY ADHERED TO SUBSTRATE
  - 333 INSULATION SHALL BE FULLY ADHERED TO SUBSTRATE
  - 334 INSULATION SHALL BE FULLY ADHERED TO SUBSTRATE
  - 335 INSULATION SHALL BE FULLY ADHERED TO SUBSTRATE
  - 336 INSULATION SHALL BE FULLY ADHERED TO SUBSTRATE
  - 337 INSULATION SHALL BE FULLY ADHERED TO SUBSTRATE
  - 338 INSULATION SHALL BE FULLY ADHERED TO SUBSTRATE
  - 339 INSULATION SHALL BE FULLY ADHERED TO SUBSTRATE
  - 340 INSULATION SHALL BE FULLY ADHERED TO SUBSTRATE
  - 341 INSULATION SHALL BE FULLY ADHERED TO SUBSTRATE
  - 342 INSULATION SHALL BE FULLY ADHERED TO SUBSTRATE
  - 343 INSULATION SHALL BE FULLY ADHERED TO SUBSTRATE
  - 344 INSULATION SHALL BE FULLY ADHERED TO SUBSTRATE
  - 345 INSULATION SHALL BE FULLY ADHERED TO SUBSTRATE
  - 346 INSULATION SHALL BE FULLY ADHERED TO SUBSTRATE
  - 347 INSULATION SHALL BE FULLY ADHERED TO SUBSTRATE
  - 348 INSULATION SHALL BE FULLY ADHERED TO SUBSTRATE
  - 349 INSULATION SHALL BE FULLY ADHERED TO SUBSTRATE
  - 350 INSULATION SHALL BE FULLY ADHERED TO SUBSTRATE
  - 351 INSULATION SHALL BE FULLY ADHERED TO SUBSTRATE
  - 352 INSULATION SHALL BE FULLY ADHERED TO SUBSTRATE
  - 353 INSULATION SHALL BE FULLY ADHERED TO SUBSTRATE
  - 354 INSULATION SHALL BE FULLY ADHERED TO SUBSTRATE
  - 355 INSULATION SHALL BE FULLY ADHERED TO SUBSTRATE
  - 356 INSULATION SHALL BE FULLY ADHERED TO SUBSTRATE
  - 357 INSULATION SHALL BE FULLY ADHERED TO SUBSTRATE
  - 358 INSULATION SHALL BE FULLY ADHERED TO SUBSTRATE
  - 359 INSULATION SHALL BE FULLY ADHERED TO SUBSTRATE
  - 360 INSULATION SHALL BE FULLY ADHERED TO SUBSTRATE
  - 361 INSULATION SHALL BE FULLY ADHERED TO SUBSTRATE
  - 362 INSULATION SHALL BE FULLY ADHERED TO SUBSTRATE
  - 363 INSULATION SHALL BE FULLY ADHERED TO SUBSTRATE
  - 364 INSULATION SHALL BE FULLY ADHERED TO SUBSTRATE
  - 365 INSULATION SHALL BE FULLY ADHERED TO SUBSTRATE
  - 366 INSULATION SHALL BE FULLY ADHERED TO SUBSTRATE
  - 367 INSULATION SHALL BE FULLY ADHERED TO SUBSTRATE
  - 368 INSULATION SHALL BE FULLY ADHERED TO SUBSTRATE
  - 369 INSULATION SHALL BE FULLY ADHERED TO SUBSTRATE
  - 370 INSULATION SHALL BE FULLY ADHERED TO SUBSTRATE
  - 371 INSULATION SHALL BE FULLY ADHERED TO SUBSTRATE
  - 372 INSULATION SHALL BE FULLY ADHERED TO SUBSTRATE
  - 373 INSULATION SHALL BE FULLY ADHERED TO SUBSTRATE
  - 374 INSULATION SHALL BE FULLY ADHERED TO SUBSTRATE
  - 375 INSULATION SHALL BE FULLY ADHERED TO SUBSTRATE
  - 376 INSULATION SHALL BE FULLY ADHERED TO SUBSTRATE
  - 377 INSULATION SHALL BE FULLY ADHERED TO SUBSTRATE
  - 378 INSULATION SHALL BE FULLY ADHERED TO SUBSTRATE
  - 379 INSULATION SHALL BE FULLY ADHERED TO SUBSTRATE
  - 380 INSULATION SHALL BE FULLY ADHERED TO SUBSTRATE
  - 381 INSULATION SHALL BE FULLY ADHERED TO SUBSTRATE
  - 382 INSULATION SHALL BE FULLY ADHERED TO SUBSTRATE
  - 383 INSULATION SHALL BE FULLY ADHERED TO SUBSTRATE
  - 384 INSULATION SHALL BE FULLY ADHERED TO SUBSTRATE
  - 385 INSULATION SHALL BE FULLY ADHERED TO SUBSTRATE
  - 386 INSULATION SHALL BE FULLY ADHERED TO SUBSTRATE
  - 387 INSULATION SHALL BE FULLY ADHERED TO SUBSTRATE
  - 388 INSULATION SHALL BE FULLY ADHERED TO SUBSTRATE
  - 389 INSULATION SHALL BE FULLY ADHERED TO SUBSTRATE
  - 390 INSULATION SHALL BE FULLY ADHERED TO SUBSTRATE
  - 391 INSULATION SHALL BE FULLY ADHERED TO SUBSTRATE
  - 392 INSULATION SHALL BE FULLY ADHERED TO SUBSTRATE
  - 393 INSULATION SHALL BE FULLY ADHERED TO SUBSTRATE
  - 394 INSULATION SHALL BE FULLY ADHERED TO SUBSTRATE
  - 395 INSULATION SHALL BE FULLY ADHERED TO SUBSTRATE
  - 396 INSULATION SHALL BE FULLY ADHERED TO SUBSTRATE
  - 397 INSULATION SHALL BE FULLY ADHERED TO SUBSTRATE
  - 398 INSULATION SHALL BE FULLY ADHERED TO SUBSTRATE
  - 399 INSULATION SHALL BE FULLY ADHERED TO SUBSTRATE
  - 400 INSULATION SHALL BE FULLY ADHERED TO SUBSTRATE



**WS\_5\_B\_CLASSROOM**  
 3/4" = 1'-0"

**WS\_5\_A\_CLASSROOM**  
 3/4" = 1'-0"

**WS\_4\_B\_CAFE**  
 3/4" = 1'-0"

**WS\_4\_A\_CAFE**  
 3/4" = 1'-0"