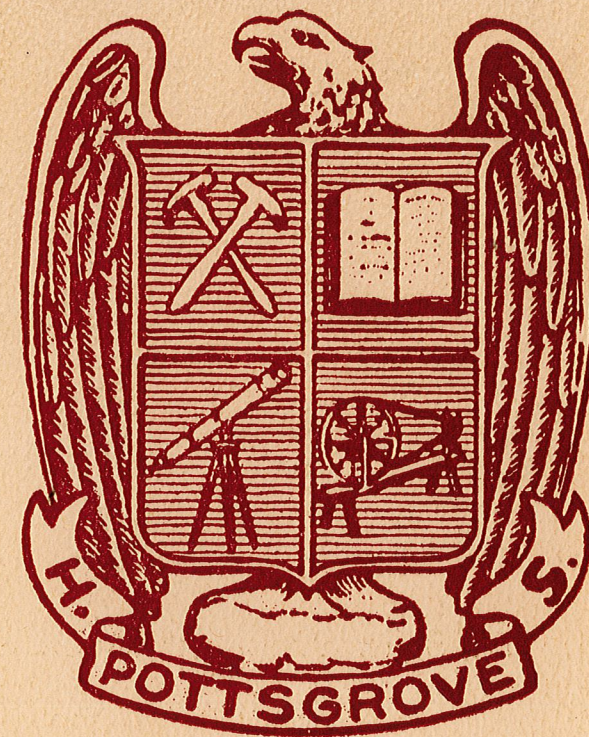


Pottsgrove High School

• 1958 •



Pottsgrove High School

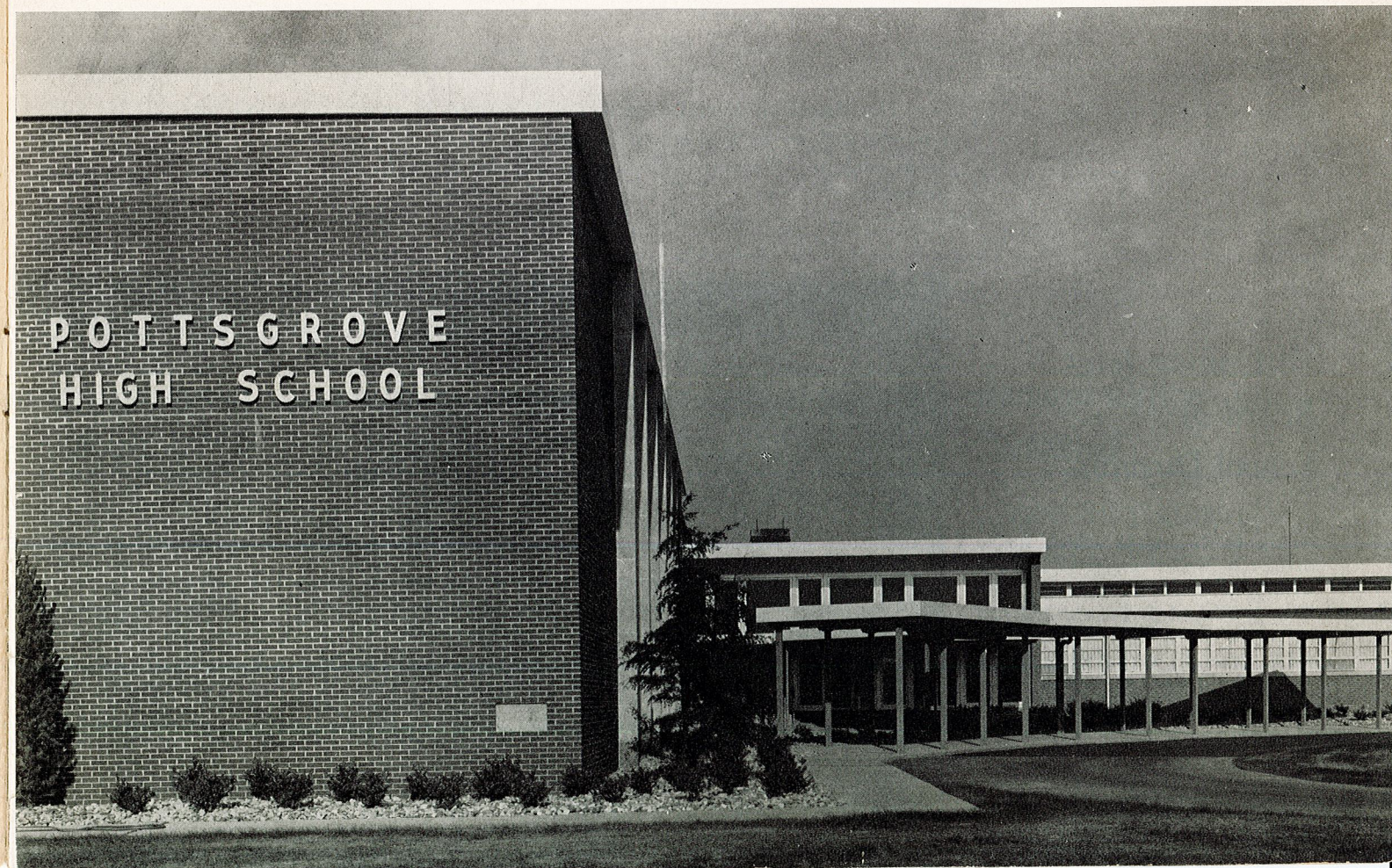
• 1958 •

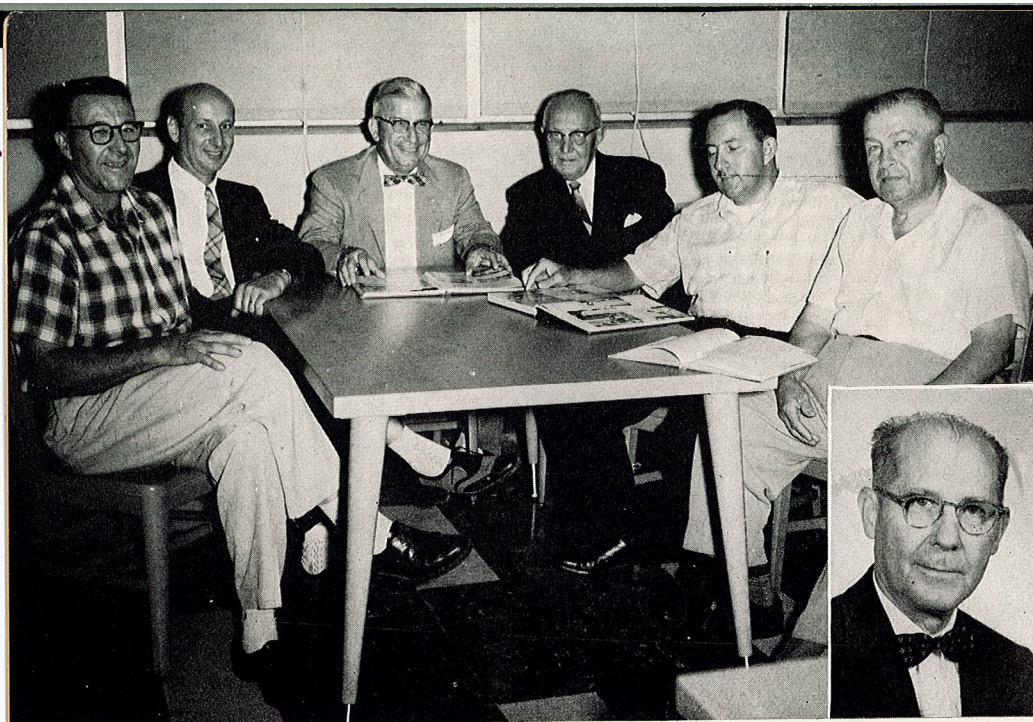
We present

POTTSGROVE

HIGH SCHOOL

A practical building, functionally designed, providing modern educational facilities to meet the needs of boys and girls in this area.





Pottsgrove School Authority

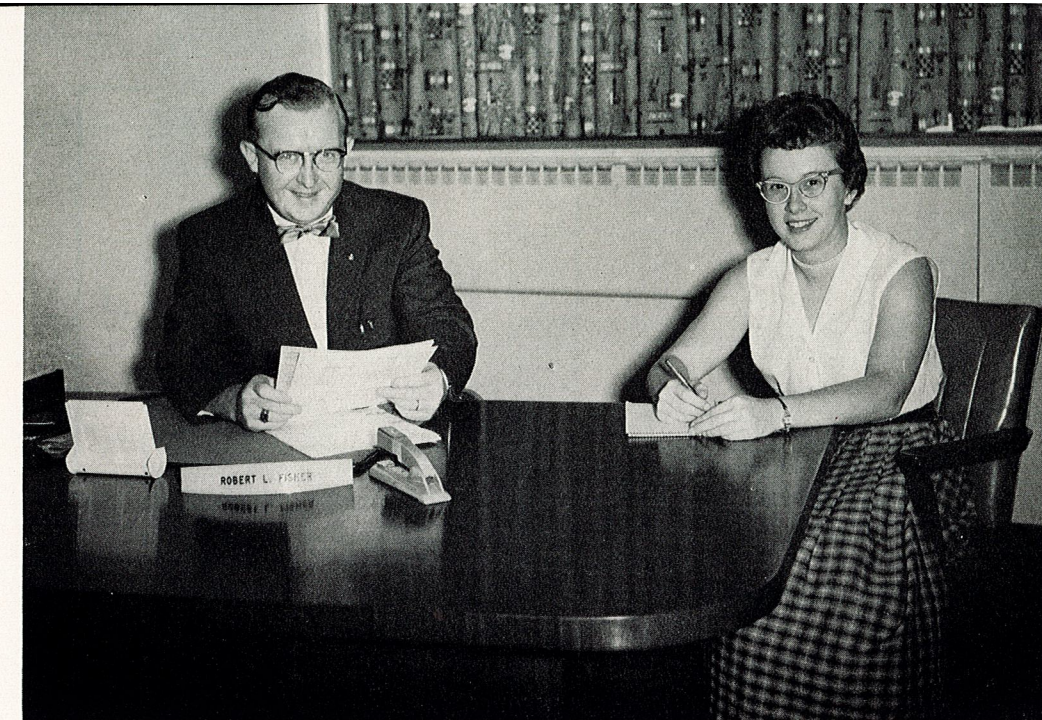
Left to right: Melvin M. Fry, John C. Saylor, Tilghman K. Hauseman, Raymond C. Hartenstine, Sr., Jules Pearlstine, Solicitor, Leonard R. Levengood, E. Russell Focht.

Supervising Principal

Robert L. Fisher

Secretary

Pearl I. Boyer



The Pottsgrove School Authority was organized early in 1955 for the purpose of planning and supervising the erection of a new junior-senior high school building to accommodate 850 pupils.

Many problems in constructing and financing the building were intelligently handled by the Authority. This building is a tribute to the untiring, relentless effort of the members of this group.

The Board of School Directors is interested in sound education for boys and girls in the area served by this high school. They are aware of the needs and are constantly striving for improvements in the instructional program.

Pottsgrove Joint Board of School Directors

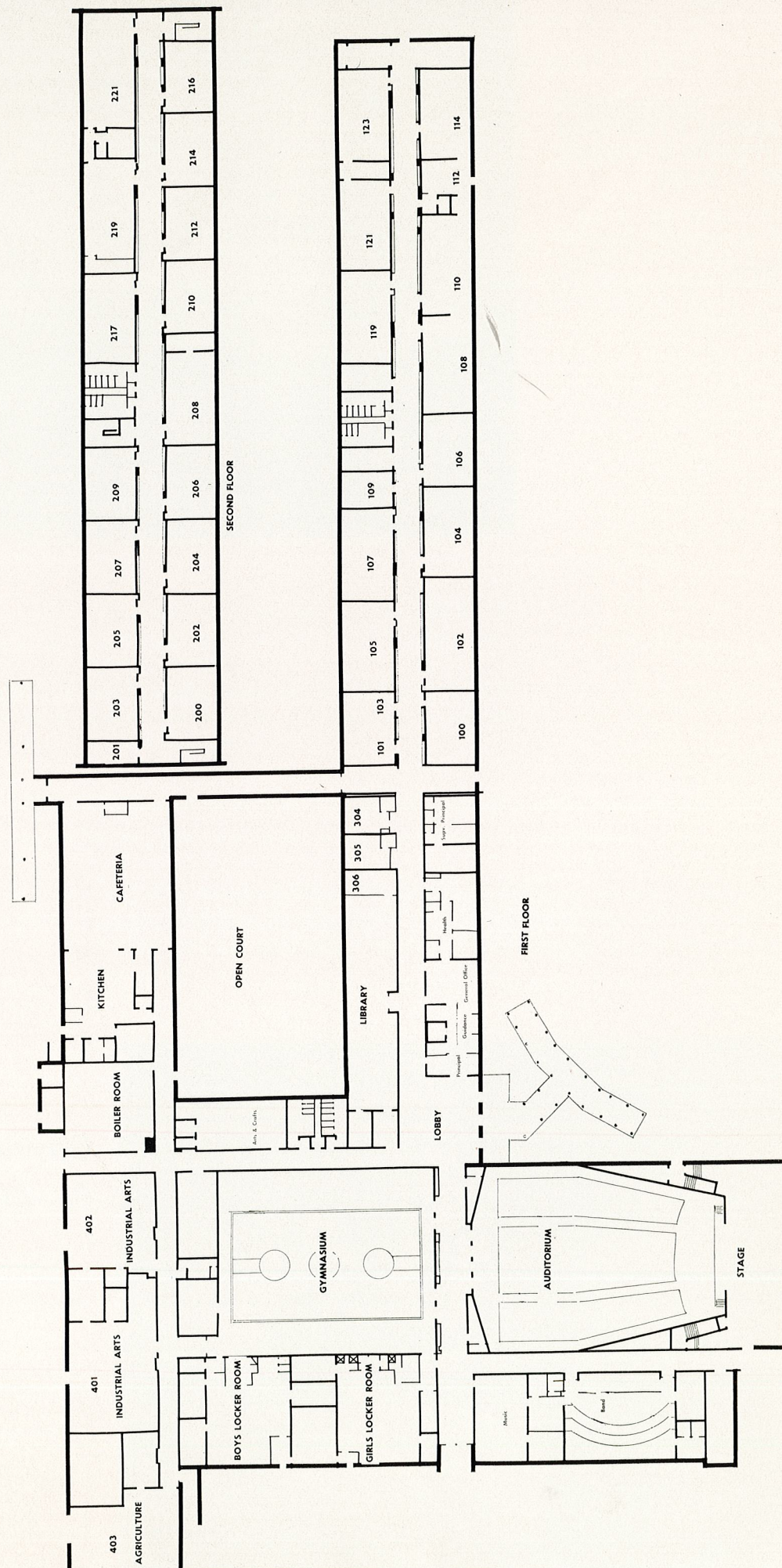
1st row left to right: John J. Basco, Stanley L. Boyer, Robert C. Petrilla, Leidy K. Gaugler, Laurence W. Keeley, Michael J. Petrick. *2nd row left to right:* Albert F. Istenes, Gerald C. Brant, W. Forrest Ginder, John E. Kurtz, David H. Scherer, Jr., Frederick W. Schneider, John LaPish.



General Office Personnel

Verna H. Leidenberger
V. Ruth Wambach

FLOOR PLAN



Building Facts

In June, 1955, the Buchart Engineering Corporation of Lancaster, Pennsylvania, was commissioned to prepare plans for the new junior-senior high school, with accommodations for 850 pupils.

In formulating the plans, the architect kept in mind functional aspects, maintenance, appearance, and overall cost.

The building was constructed at a cost of \$2,220,000.00. There are 29 rooms in the classroom wing, including a student conference room; student activity room; and business education, home economics, and science suites.

The administrative suite contains offices of the supervising principal, high school principal and guidance counselor; a general office; men's and women's faculty rooms; library; library conference room; library work room; and health suite.

The auditorium, south of the lobby, has a seating capacity of 900. The stage is equipped to handle a variety of dramatic productions and is large enough to accommodate a 100-piece band. Six spot lights are recessed in the ceiling. Two large incandescent spot lights and one carbon-arc spot light are located in the rear of the auditorium, eliminating the need for footlights on the stage. A large electric panel control box is located on the stage, from which all the lighting is operated.

The gymnasium, across the hall from the auditorium, will seat approximately 750 people. A folding door divides the large gym into two smaller ones for physical education classes, enabling two groups to be taught at the same time. Boys' and girls' locker rooms are conveniently located for pupils who use the gymnasium.

The music suite is composed of a vocal classroom; director's office; vocal practice room; 3 instrumental practice rooms; storage rooms for uniforms; instruments, and music; plus a band and chorus rehearsal room.

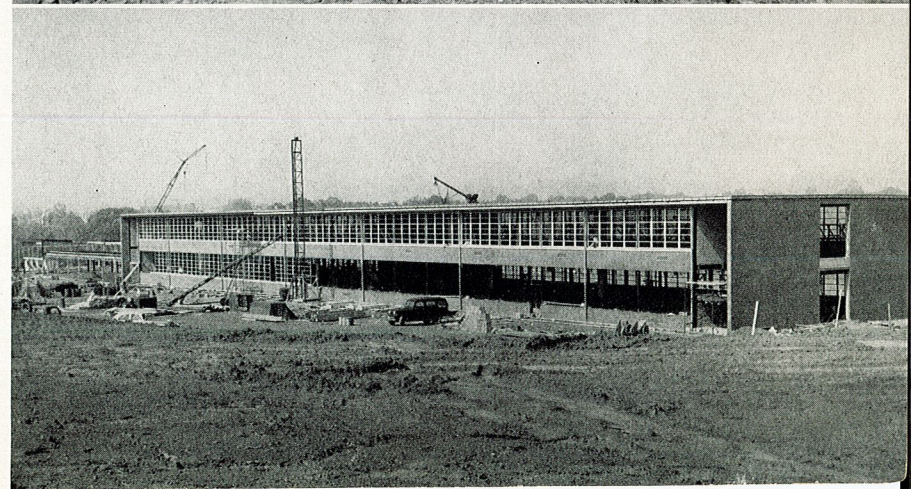
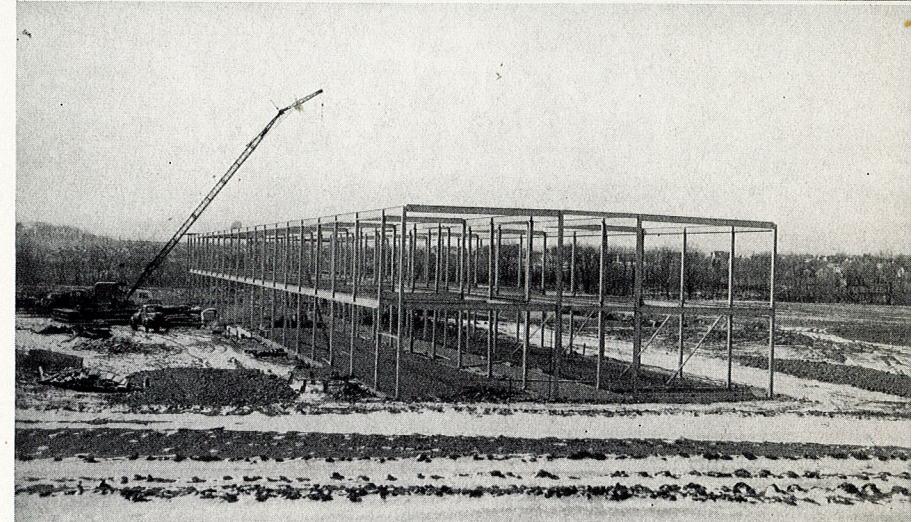
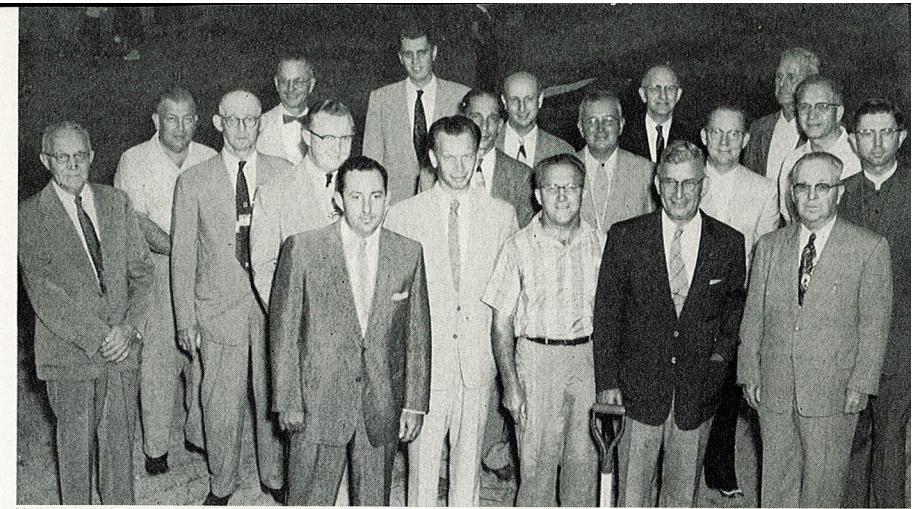
The industrial arts wing consists of an agriculture shop and classroom, a wood shop, metal shop, planning center, paint room, and storage space for projects.

The boiler room is equipped with two oil-fired, steam heating units for supplying heat and one oil-fired steam unit for heating water. A gas incinerator has been installed to burn waste paper.

The cafeteria will accommodate 300 students. Food is prepared in the kitchen, which is provided with stainless steel equipment.

The arts and crafts room is located in such a way that it enables the utilization of northern light. It is equipped to handle ceramics, pottery, jewelry projects and also includes crayon, water-color and oil-painting work.

We are justly proud of our school and feel the educational program to be offered here will meet the needs of youngsters in this area.





High School Príncipeal

Jessie H. Rosenberry

FACULTY

1st row left to right: Gail H. Hesser, Elizabeth A. Hill, Dorothy E. Horn, Ruth G. Hochstetter, Rita M. Ciori, Lucile K. Mogel, Anne P. Wentzel, Sara C. Rambo, Kathryn G. Wenhold, Jacqueline N. Flamm, Nancy Y. Bixler. *2nd row left to right:* Francis J. Winterbottom, Donald J. Cooke, Alford B. Dibble, Anthony P. Giangiacomo, Audrey P.

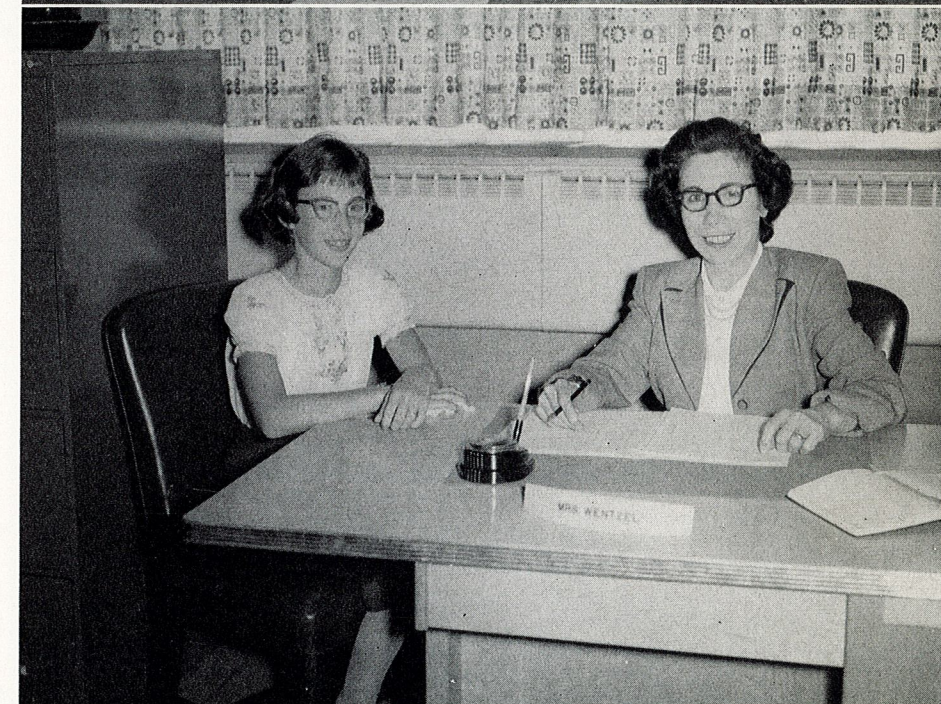
Glutz, Patricia T. Birkinbine, Robert H. Schneider, Thomas G. Roberts, Jr., Donald W. Zimmerman, Ronald K. Schafer. *3rd row left to right:* Julius J. Raymond, Donald C. Losch, John S. Keenan, Barry R. Nelson, Clyde A. Dry, Richard J. Radel, Richard A. Guldin, Daniel H. Greulich, George H. Eichnor, Howard J. Moyer.



Library

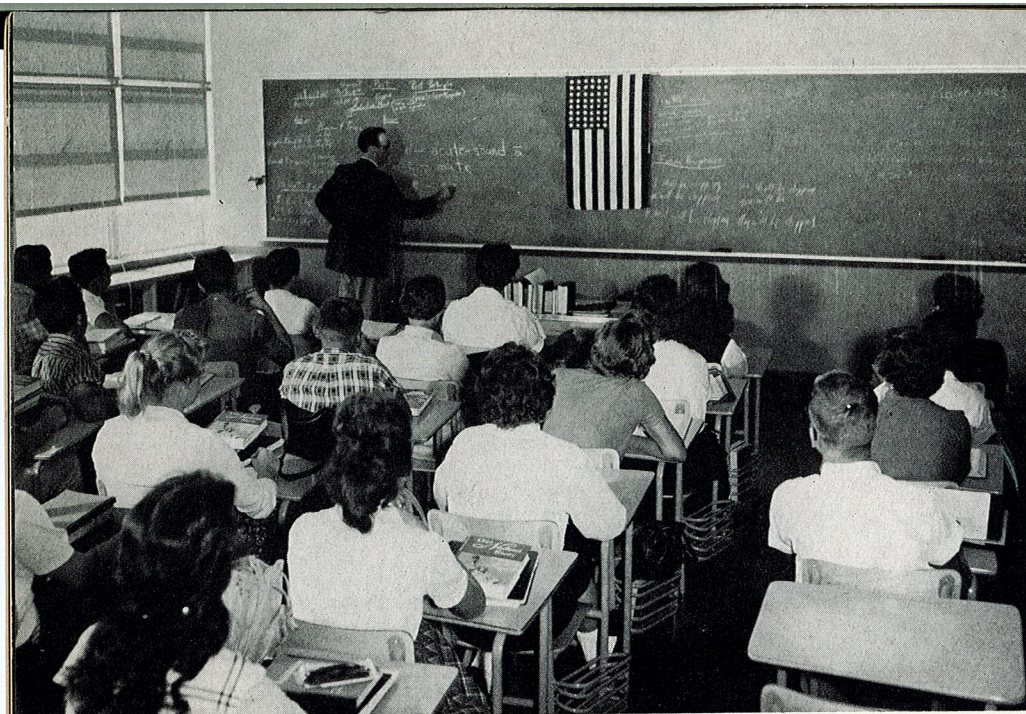


Guidance Office



Health Suite

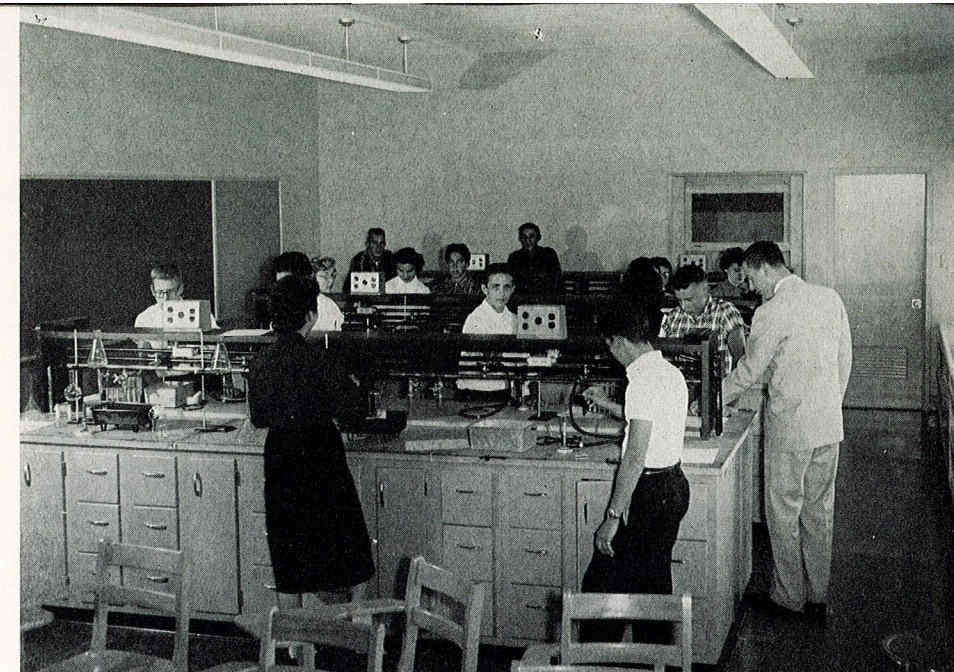




French Class

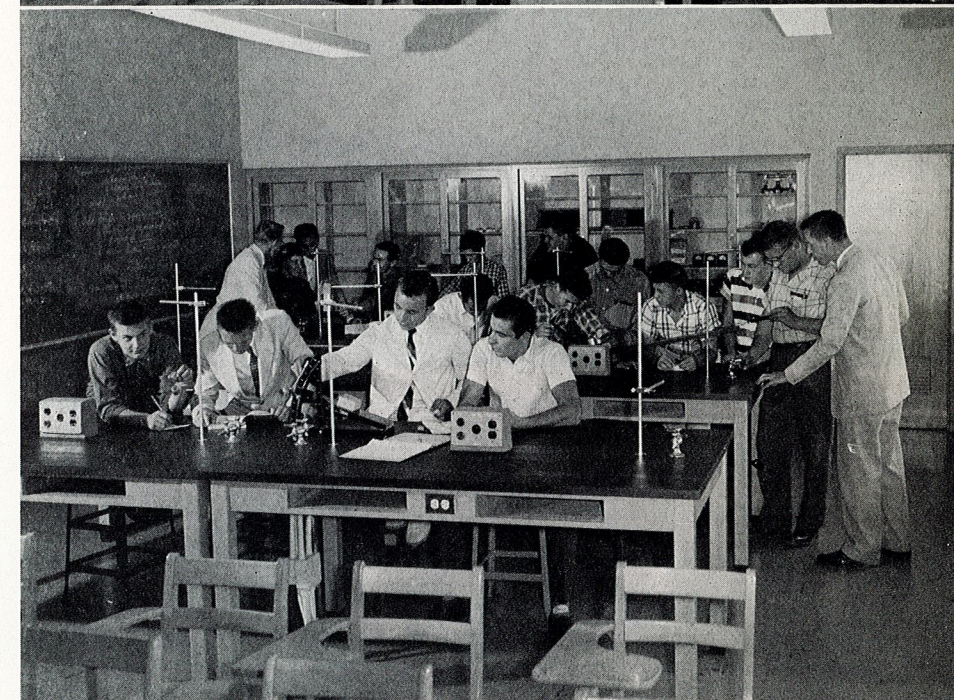
SCIENCE DEPARTMENT

Chemistry Laboratory

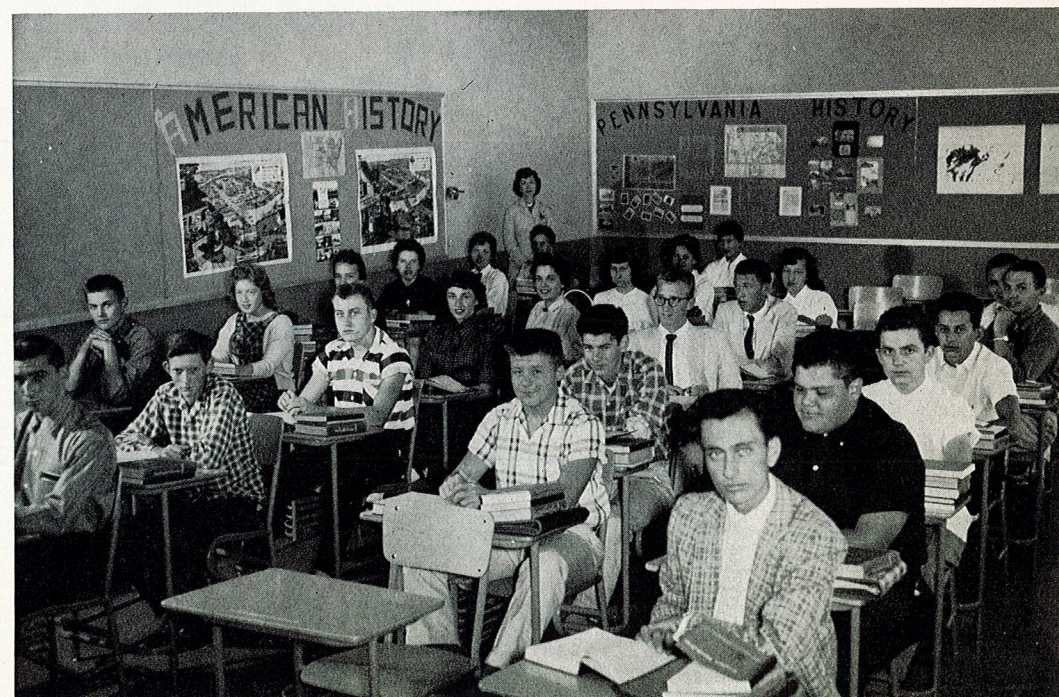


ACADEMIC SUBJECTS

Physics Laboratory

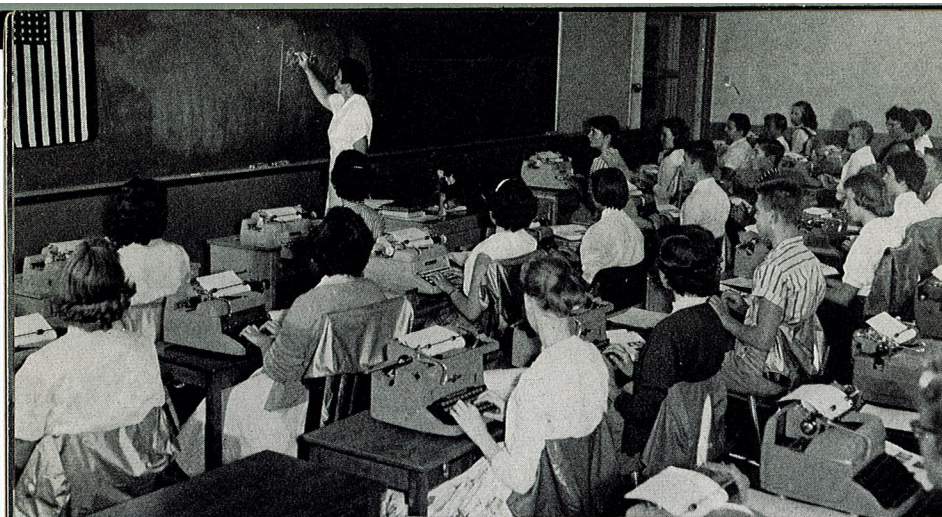


Social Studies Class



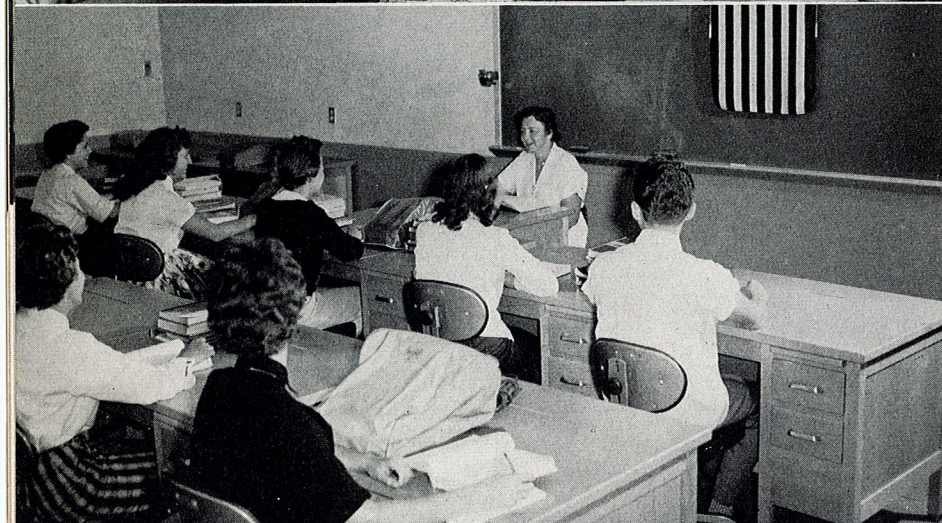
Biology Laboratory



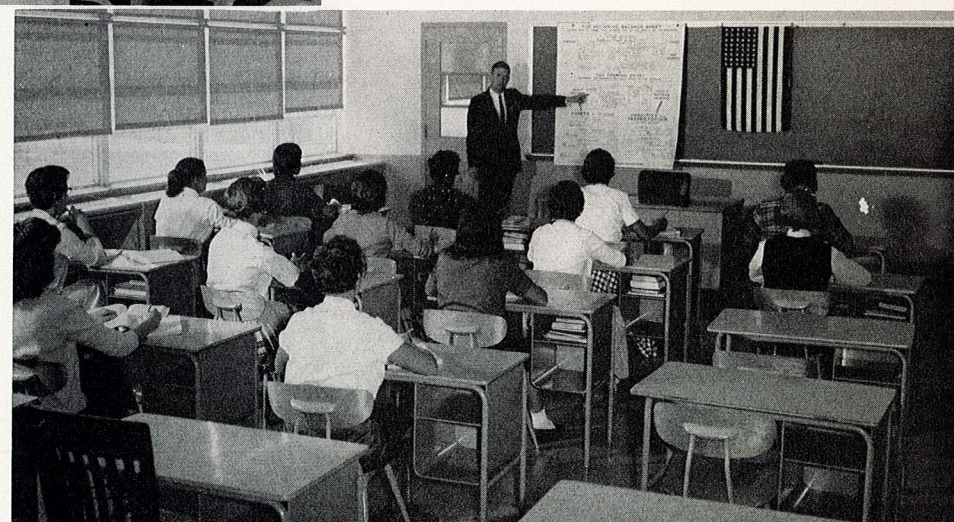


BUSINESS EDUCATION

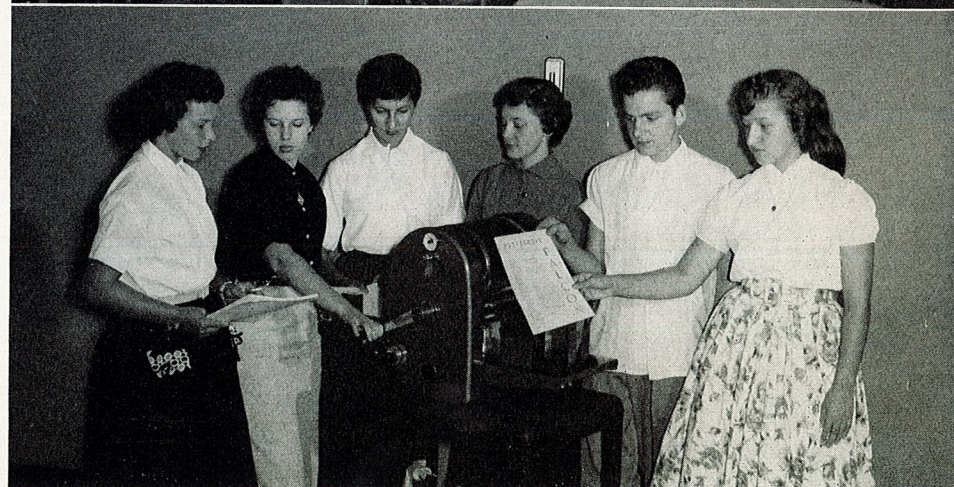
Typing



Office Practice



Bookkeeping



Student Activity

HOMEMAKING

Clothing Center



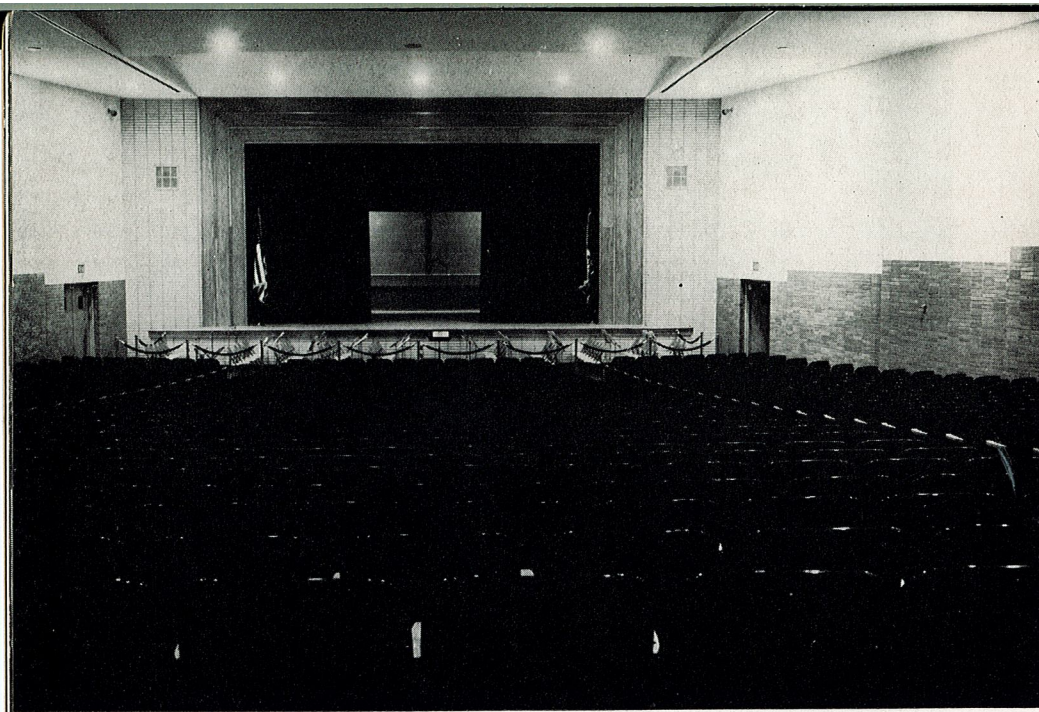
Foods Center



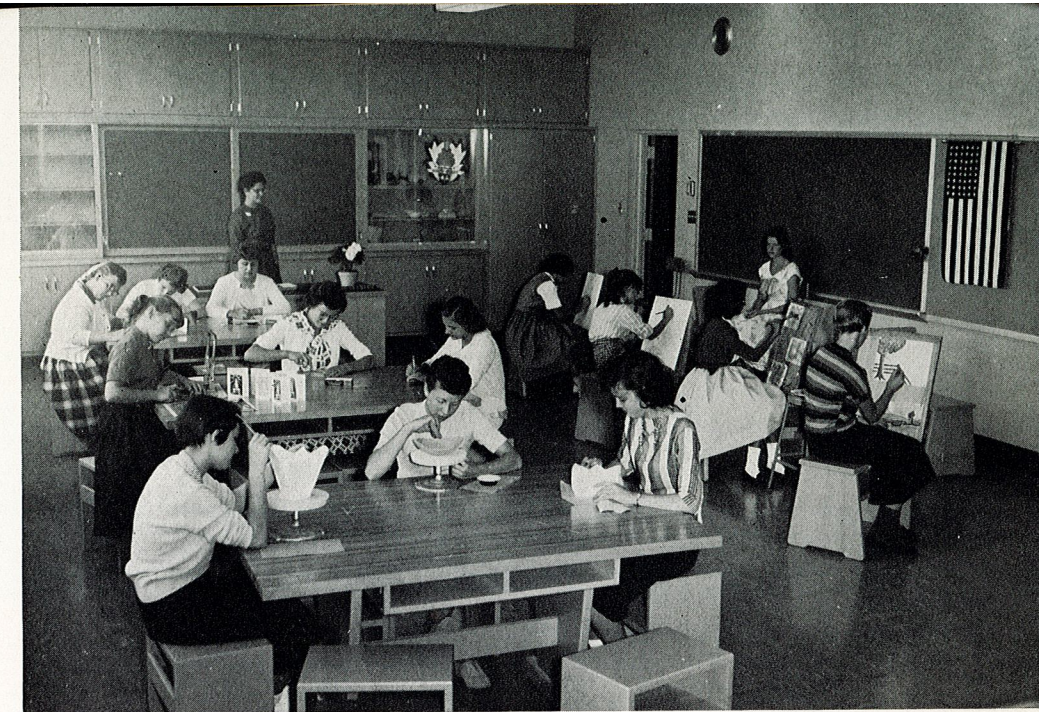
Family Life Center



All Purpose Room



Auditorium



Arts and Crafts

Band Room



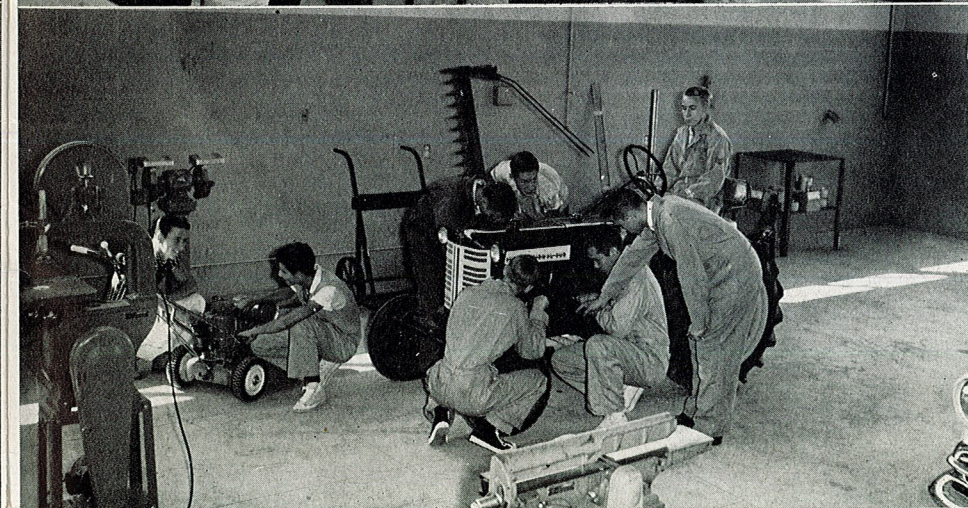
Agriculture Classroom

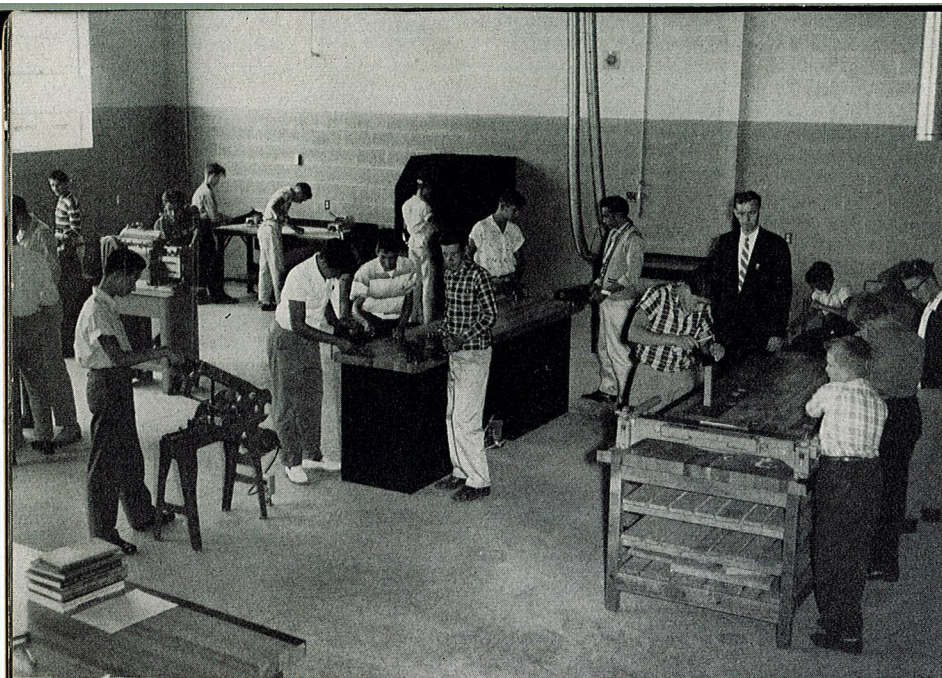


Vocal Music Room



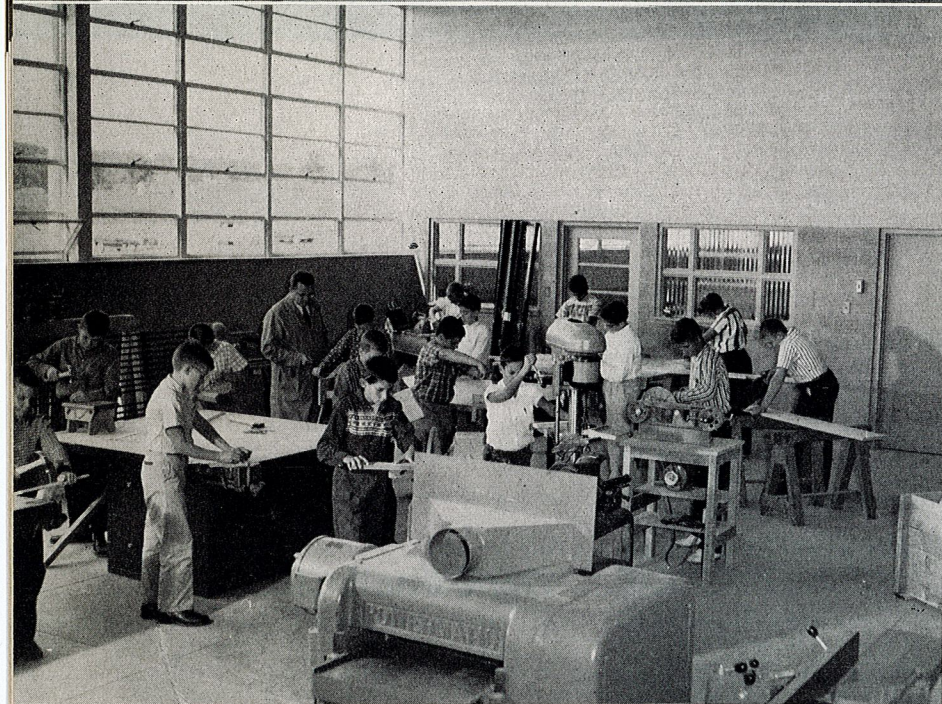
Agriculture Shop



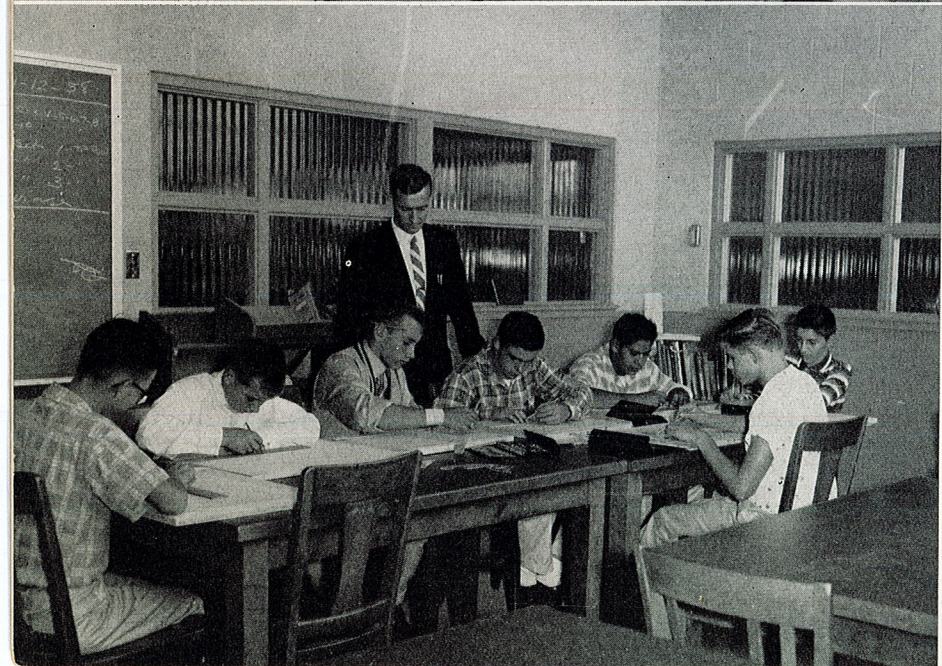


INDUSTRIAL ARTS

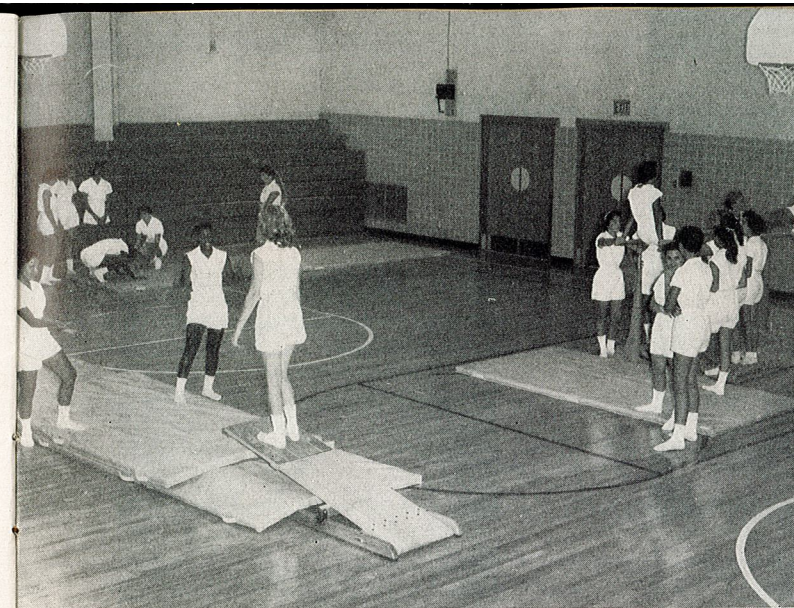
Metal Shop



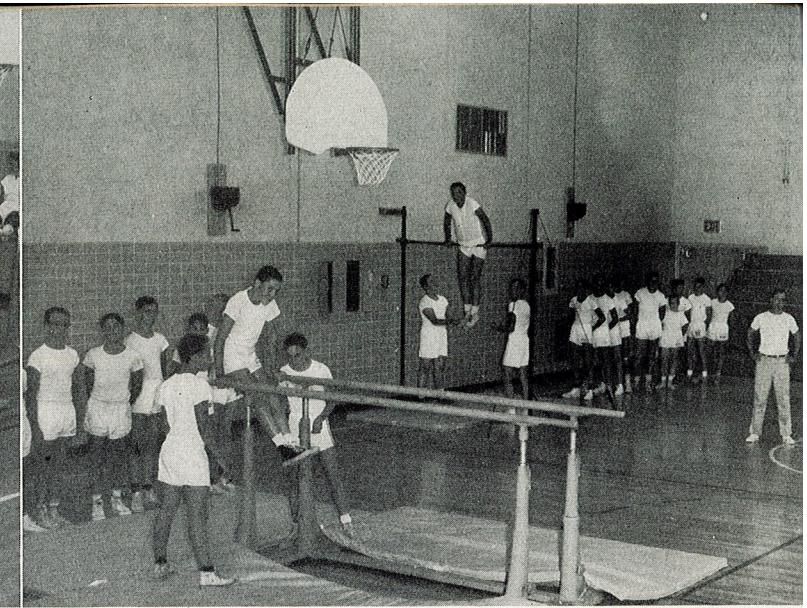
Wood Shop



Planning Center



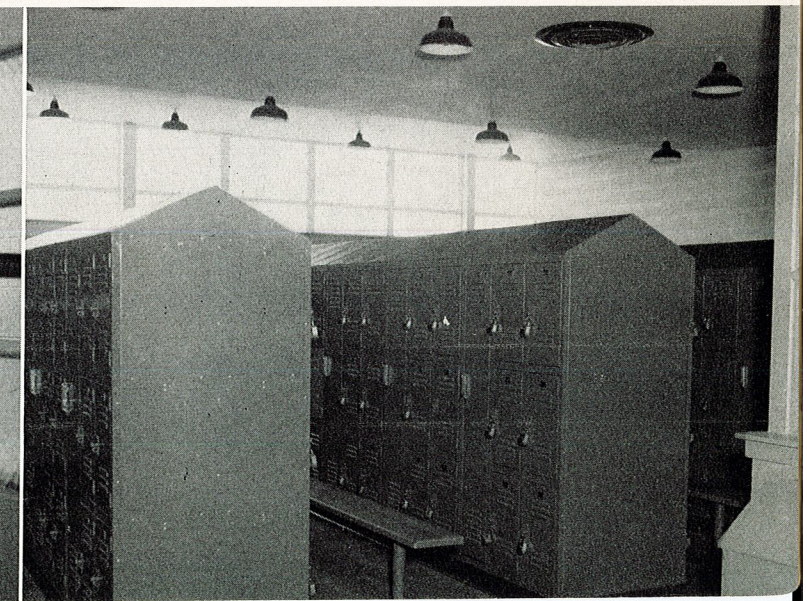
Girls' Physical Education



Boys' Physical Education

Girls' Locker Room

Boys' Locker Room





Cafeteria

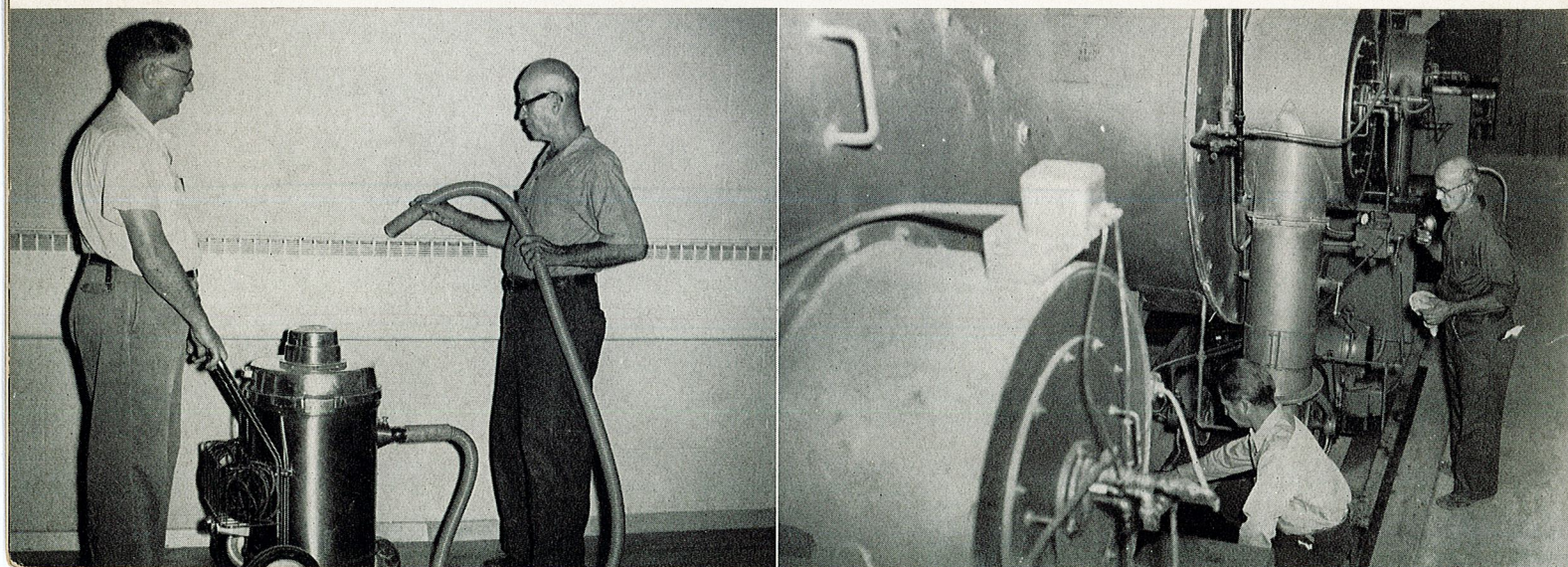


Cafeteria Manager



Kitchen

Custodians



ACKNOWLEDGMENTS

Building

General Contractor ... WARREN B. ZERN

Electrical Contractor ... MCGEE ELECTRICAL COMPANY

Heating Contractor ... NATIONAL PLUMBING AND HEATING CORPORATION

Plumbing Contractor ... CORBIT'S, INC.

Architect BUCHART ENGINEERING CORPORATION

Solicitor JULES PEARLSTINE

Brochure

Engraving HORAN ENGRAVING COMPANY

Printing KUTZTOWN PUBLISHING COMPANY

Photography PICKAR STUDIO