

Welcome to our new Pottsgrove High School building! Please enjoy your preliminary visit, which will give you an opportunity to see the building before it is used in educating boys and girls. A dedication program including corner stone laying and open house will be held in October, at which time you will see how various facilities are used to provide a well rounded educational program.

The building was constructed at a cost of \$2,220,000.00. There are 29 rooms in the classroom wing including a student conference room, student activity room, business education, home economics and science suites.

The administrative suite contains offices of the supervising principal, high school principal and guidance counselor, a general office, mens' and womens' faculty rooms, library, library conference room, library work room and health suite.

The auditorium, south of the lobby, has a seating capacity of 900. The stage is equipped to handle a variety of dramatic productions and is large enough to accomodate a 100 piece band. Six spot lights are recessed in the ceiling. Two large incandescent spot lights and one carbon arc spot light are located in the rear of the auditorium, eliminating the need for footlights on the stage. A large electric panel control box is located on the stage from which all the lighting is operated.

The gymnasium, across the hall from the auditorium, will seat approximately 750 people. A folding door divides the large gym into two smaller ones for physical education classes, enabling two groups to be taught at the same time. Boys' and girls' locker rooms are convenient to the gymnasium.

The music suite is composed of a vocal classroom; director's office; vocal practice room; 3 instrumental practice rooms; storage rooms for uniforms, instruments, and music; plus a band and chorus rehearsal room.

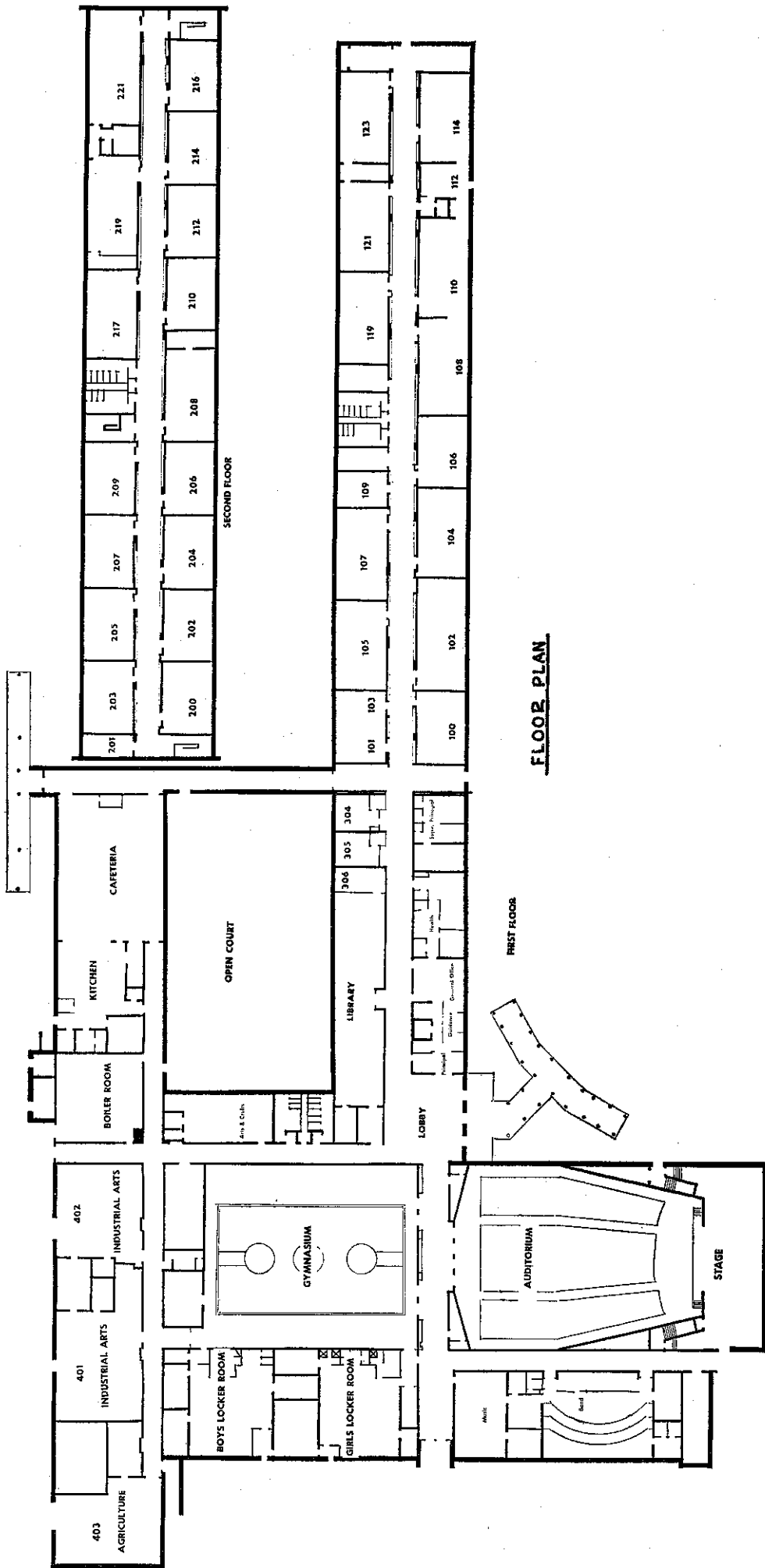
The industrial arts wing consists of an agriculture shop and classroom, a wood shop, metal shop, planning center, paint room, and storage space for projects.

The boiler room is equipped with two oil fired, steam heating units for supplying heat and one oil fired steam unit for heating water. A gas incinerator has been installed to burn waste paper.

The cafeteria will accommodate 300 students. We plan to operate three lunch periods. Food will be prepared in the stainless steel kitchen.

The Arts and Crafts room is located so as to make use of north light. It is equipped to handle ceramics, pottery, jewelry projects in addition to crayon, water color and oil painting work.

We are justly proud of our school and feel the educational program to be offered here will meet the needs of youngsters in this area.



**FLOOR PLAN**