



**2021-2022**

UPDATED JAN. 3, 2022

# **SAFE RETURN TO IN-PERSON INSTRUCTION & CONTINUITY OF SERVICES PLAN**

*Willis Independent School District*

# 2021-22 SAFE OPENING PLAN

## OVERVIEW

In accordance with the Texas Education Agency School Health Operations Requirements effective June 5, 2021, Willis ISD has updated our health protocols for students and staff. These guidelines are subject to change based on new guidance from TEA, the Montgomery County Health Department (MCHD) and the Centers for Disease Control (CDC), as well as any federal mandates that may be handed down. This plan is subject to change at any time based on local and national guidance or requirements.

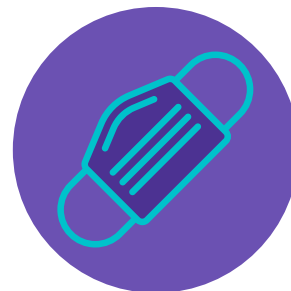
Prevention of disease transmission in our schools will continue to take all of us working together. The best way to prevent the spread of illness in our schools is to stay home when ill. We appreciate your assistance in helping to ensure we all have a wonderful school year!

## INSTRUCTIONAL DELIVERY

Willis ISD will operate the 2021-2022 school year with in-person learning as the sole option for all students. There will not be any remote learning options at this time.

## FACE COVERINGS

Face coverings are optional for all staff and students. Campuses will work to ensure no student is treated differently because of their choice to wear a mask or not wear a mask. We encourage you to discuss these differences with your child accordingly.



# HEALTH PROTOCOLS

## GENERAL HEALTH PROTOCOLS

- Students and staff must not have fever (greater than 100.0) for at least 24 hours without the use of fever-reducing medications prior to returning to school/work (COVID-related or otherwise).
- Students and staff must have no episodes of vomiting for at least 24 hours without the use of suppressing medications before returning to school/work (COVID-related or otherwise).
- Students and staff must be diarrhea free for at least 24 hours without the use of diarrhea-suppressing medications before returning to school/work (COVID-related or otherwise).
- Washing/sanitizing hands often, especially before eating, after using the restroom, blowing your nose, coughing, or sneezing, and after coming in contact with highly touched objects such as doorknobs, handrails, etc. can help reduce the spread of illness.

## COVID-19 PROTOCOLS

- Staff and students will continue to be required to report confirmed positive cases of COVID-19 to campus administration or their supervisor. Positive cases will continue to be reported to TEA and the MCHD as required, and tracked on a District COVID-19 Dashboard. We will no longer send notification emails.
- Staff and students with a lab-confirmed case of COVID-19 must quarantine for 5 days from date of symptom onset or, if asymptomatic, for 5 days from positive test date. They may return on day 6 if they have been fever-free for 24 hours and if symptoms are greatly improved. \*The district will not be conducting contact tracing, so you should consider notifying any close contacts. CDC recommends the individual continue to wear a mask for 5 additional days in public or at school.
- Staff and students who learn they may have been exposed to a COVID positive individual, and who are asymptomatic, should consider quarantining accordingly.
- Staff and students who have been exposed to a COVID positive individual and ARE experiencing symptoms should consider quarantining for 5 days, and returning once they have been fever-free for 24 hours and symptoms have greatly improved.
- Staff and students who are fully vaccinated (two weeks have passed since the second dose of a 2-dose vaccine or one dose of a single-dose vaccine) do not need to quarantine if exposed to a COVID positive individual, as long as they remain asymptomatic.

# CLEANING PROTOCOLS

## CLEANING & DISINFECTING PROTOCOLS

- Custodians will be working a staggered schedule to ensure additional custodial coverage during the school day.
- Cleaning and disinfecting will occur throughout the day and nightly in all classrooms, commons areas, restrooms, and high-touch surfaces.
- Each school entry will be equipped with a hand sanitizer station.
- Each classroom will be equipped with hand sanitizer and disinfectant supplies.
- Willis ISD last year began utilizing an antimicrobial floor finish that helps inhibit the growth of bacteria (<https://www.buckeyeinternational.com/clarion-25-microban>).
- CDC recommends that each school district provide teachers and students the opportunity to clean their own spaces before and after they are used in ways that are safe and developmentally appropriate.
- Restrooms, cafeterias, playgrounds and computer labs will undergo extensive cleaning after each day's use and as needed throughout the day.

## HANDWASHING & SANITIZING

- Hand washing protocols will be discussed and reinforced.
- Posters on how to wash hands properly will be hung in all student restrooms.
- When possible, handwashing for 20 seconds is preferable over hand sanitizing; hand sanitizer should be used when handwashing is not available.

## BUILDING LOGISTICS/PROCEDURES

- Campuses will do their best to accommodate parent requests to ensure their student remains socially distanced when possible, but social distancing will not be feasible in all situations.
- Cafeteria and food service will return to normal operations.
- Visitors will be allowed on campus according to standard visiting rules after completing district screening protocol. UIL guidance will determine sports venue protocols.