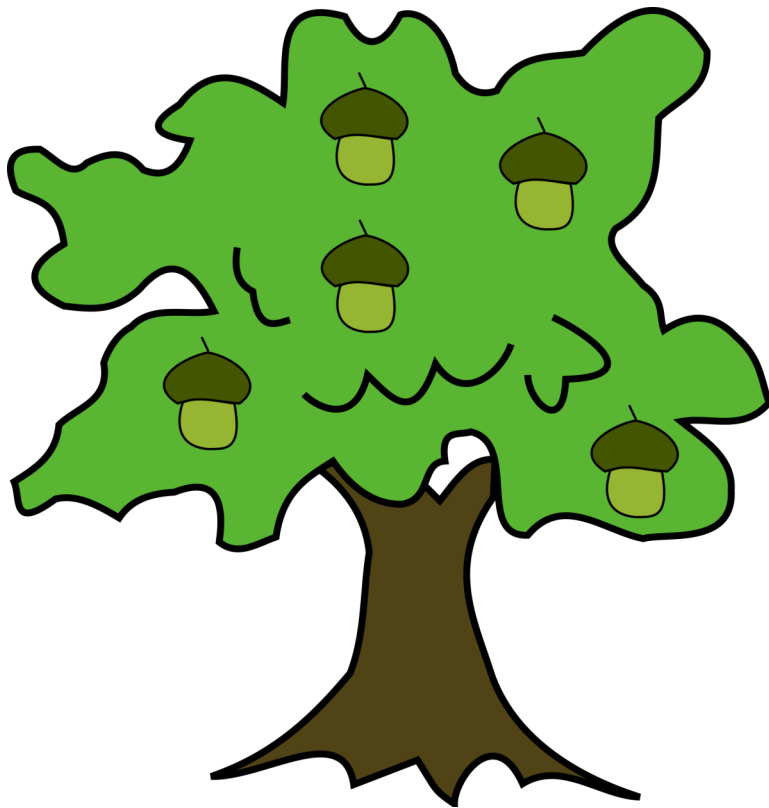


MY PLANT JOURNAL



Name: _____

A plant is . . .



From the Book



Four sets of horizontal writing lines. Each set consists of a solid top line, a dashed middle line, and a solid bottom line.



Four sets of horizontal writing lines, identical to the ones above, each consisting of a solid top line, a dashed middle line, and a solid bottom line.

The Life Cycle of Plants



Three horizontal lines for writing: a solid top line, a dashed middle line, and a solid bottom line.



Three horizontal lines for writing: a solid top line, a dashed middle line, and a solid bottom line.



Three horizontal lines for writing: a solid top line, a dashed middle line, and a solid bottom line.



Three horizontal lines for writing: a solid top line, a dashed middle line, and a solid bottom line.

My Seed Observations

DAY 1	
DAY 2	
DAY 3	
DAY 4	
DAY 5	

My Seed Observations

DAY 6

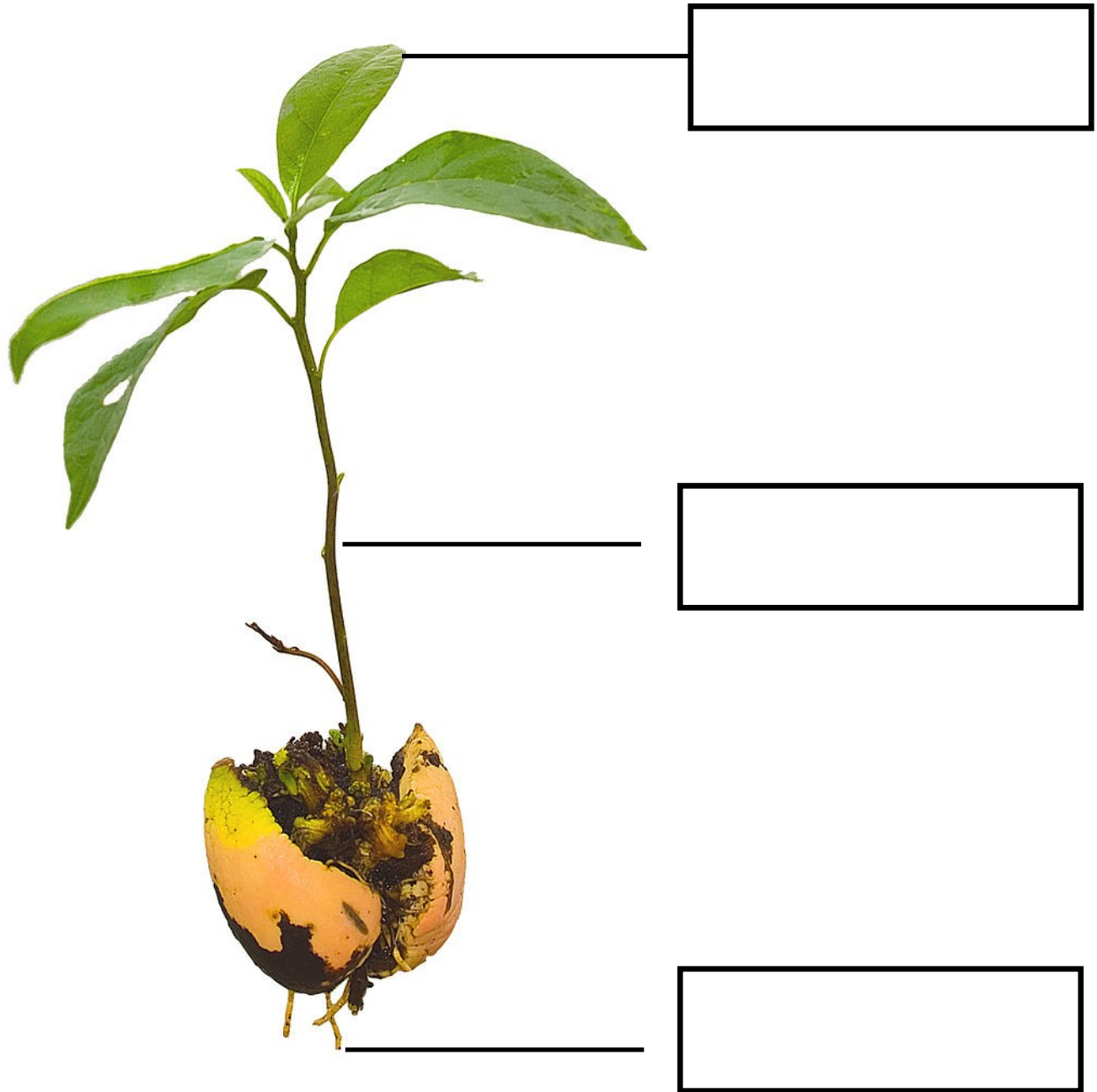
DAY 7

DAY 8

DAY 9

DAY 10

Parts of a Plant



Part



Purpose



Nature Walk

The plants I saw...



Nature Walk

The plants I saw...



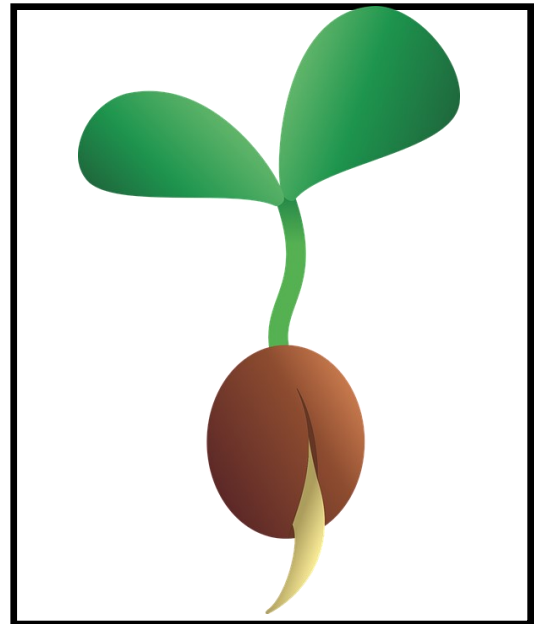
Nature Walk

The plants I saw...



What I Learned

This is a plant
because it has ...



A Stem

Feet

Hands

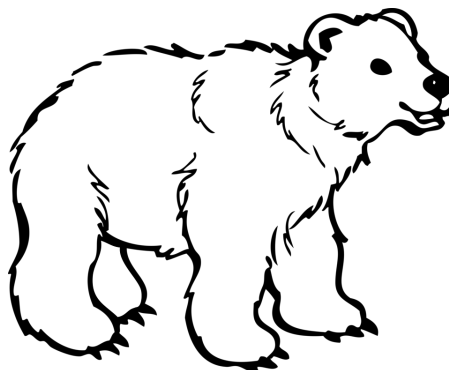
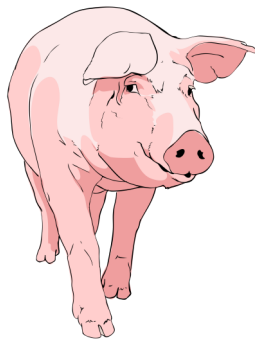
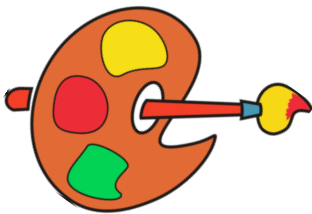
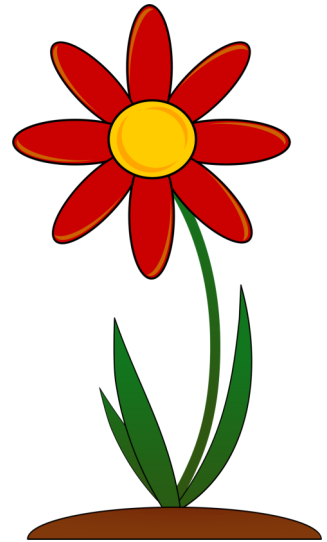
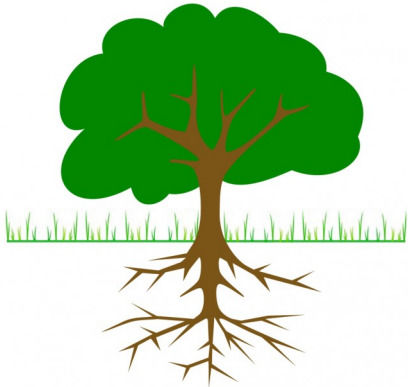
Leaves

Roots

Eyes

What I Learned

Circle the plants!



My Summary

