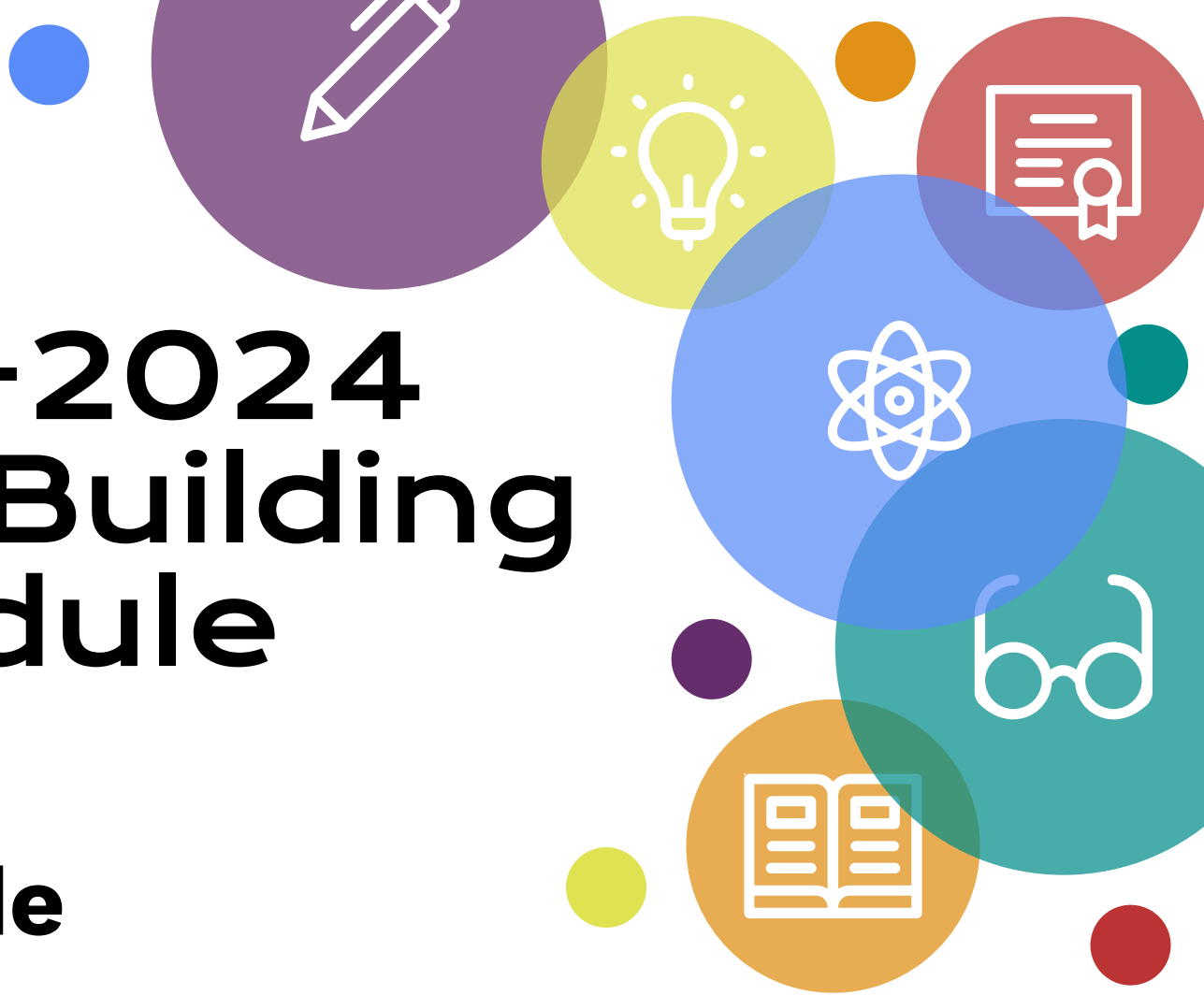


2023-2024 Giles Building Schedule

GilesMade



Highlights

01

7 Period Schedule

- 28 mins - Half and 56 mins Full

02

Academic

- Writing Course Added 7th/8th
- ELL Co-Taught with Social Studies 5th-8th
- SEL Foundations Added 5th/6th
- STEAM - 7th/8th 56 mins for PLTW

03

W.I.N.

- Focus on Tier II and Tier III Interventions Math & ELA

04

SpEd

- Co-Taught ELA and Math
- SpEd Continuum for ELA and Math option from co-taught to resource





Goal #1

Support Giles School Improvement Plan with a focus on increase time (56 minutes) in ELA for a semester with the addition of a **WRITING** course for 7th / 8th.

STEAM/ Writing 7th/8th



Semester One

7th Grade - STEAM
8th Grade - Writing

Semester Two

7th Grade - Writing
8th Grade - STEAM





Goal #2

Support Giles School Improvement Plan with a focus on increase minutes (56 minutes) in **STEAM** for a semester to focus on **PLTW** with an emphasis in **MATH** for grades 7th and 8th.



Goal #3

Support Giles School Improvement Plan with a focus on providing **MTSS Tier II and Tier III** support to students below the **25th percentile** in Math & ELA.

Tier II and Tier III outside W.I.N.

Students would be pulled from Spanish to receive their additional intervention outside of W.I.N. provided by our LMC paraprofessional.





Goal #4

Support Giles School Improvement Plan with an emphasis on **Social Emotional Behavior** with Advisory class which focuses on building relationships (peer to peer and student to teacher).



Goal #5

Support Giles School Improvement Plan with an emphasis **ELL services** in the **general education classroom** with a focus on co-taught instruction in Social Studies.

The background features several overlapping circles in various colors: orange, lime green, purple, blue, teal, and red. There are also several white icons: a gear inside a speech bubble, a pair of glasses, a book, a pencil, a gear inside a double-headed arrow, and a gear inside a speech bubble.

Goal #6

Support Giles School 5th & 6th grade students with additional **Social and Emotional (SEL)** time (28 minutes) dedicated in a **SEL Foundations Class**.



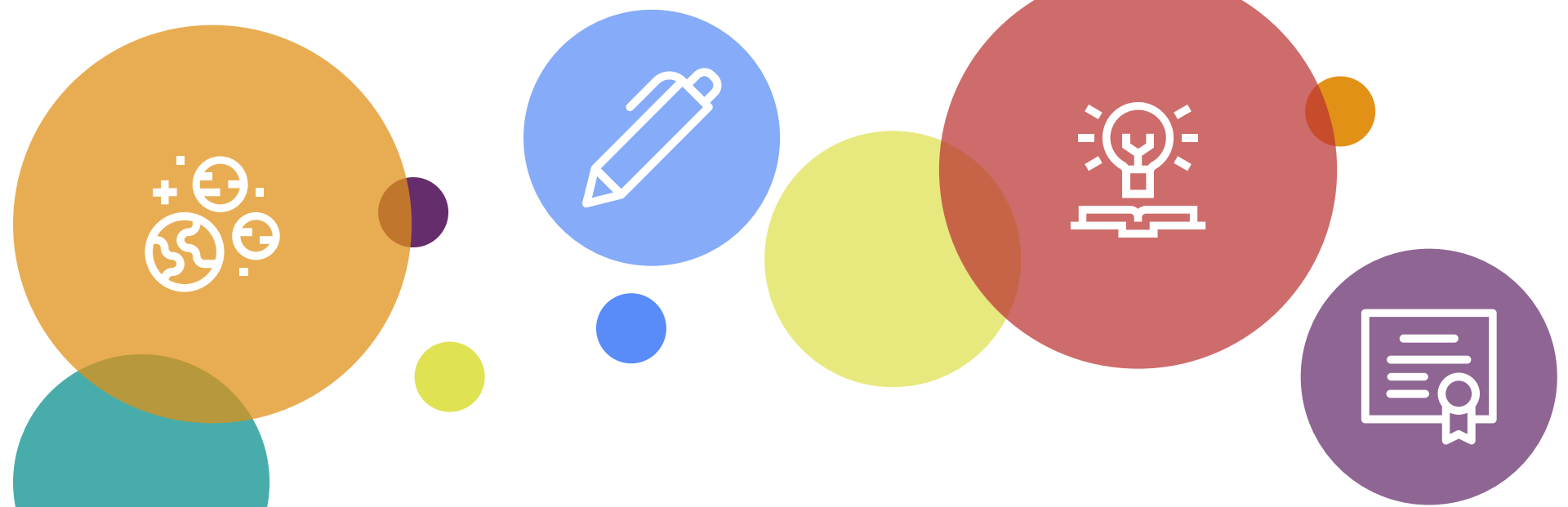
Goal #7

SpEd Continuum of services with continuation of co-taught ELA / Math and along with an **ELA and Math Foundations SpEd course** that provides an additional service between co-taught and self contained.



What are the specific changes?

- Additional 1 CBA Teacher (Writing)
- Reduction in 1 Paraprofessional
- Art - 5th and 6th Grades ONLY
- SEL Foundations - 5th and 6th Grades ONLY
- STEAM - 7th and 8th Grades ONLY + Semester Course
- Writing - 7th and 8th Grades ONLY + Semester Course
- W.I.N. - Increased staff to provide additional Tier II and Tier III supports



Questions?

